

Bronx River Greenway Southern Connections

Pedestrian/Bicycle Access to Concrete Plant & Starlight Parks



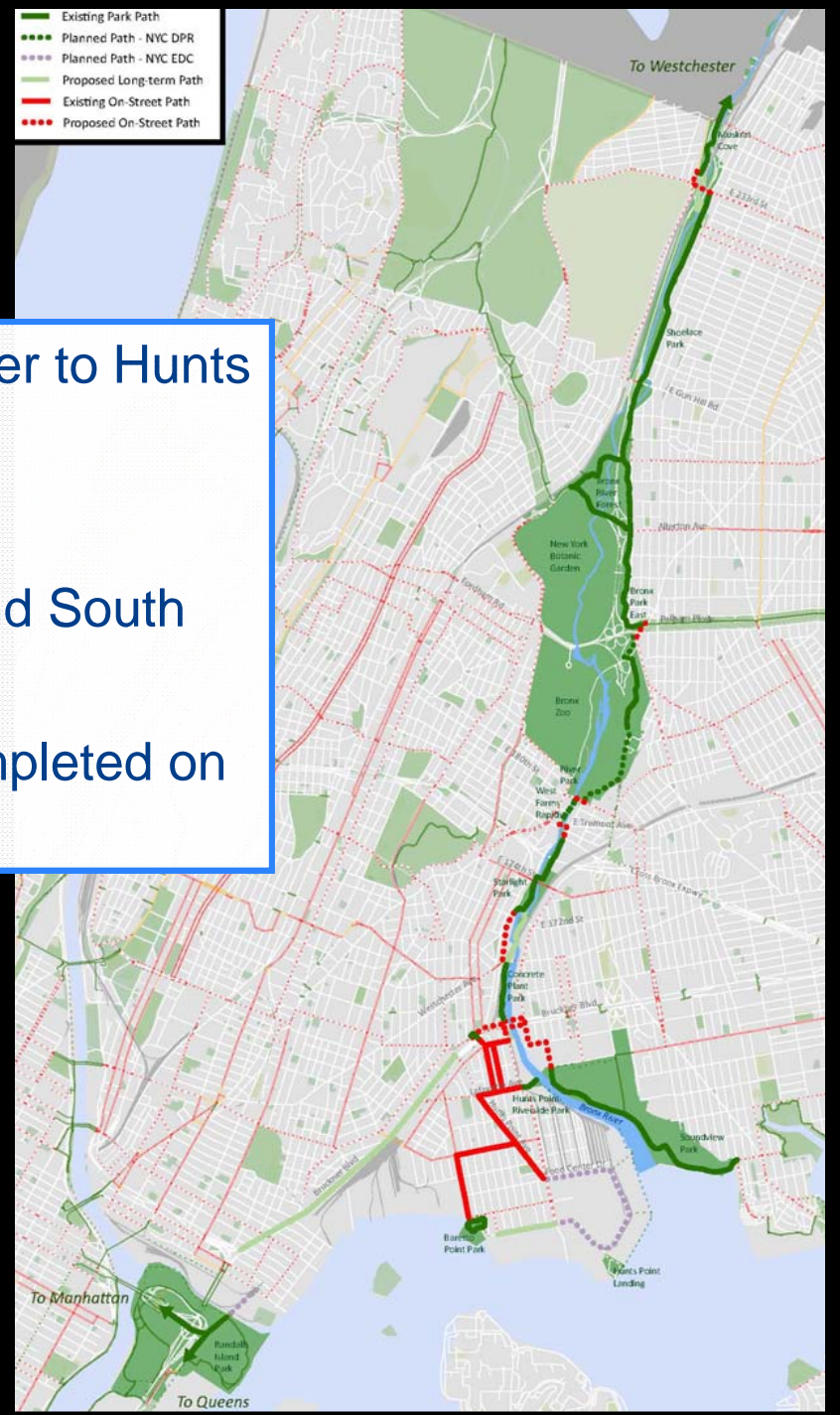
Commissioner Janette Sadik-Khan, New York City Department of Transportation
Presented to Community Board 9, January 15, 2013



Bronx River Greenway

Transportation Corridor

- 10 mile route from Westchester border to Hunts Point/Soundview
- Key north-south bicycle corridor
- Connections to Mosholu, Pelham, and South Bronx Greenways
- 6 out of 8 miles of off-street path completed on parkland



Bronx River Greenway

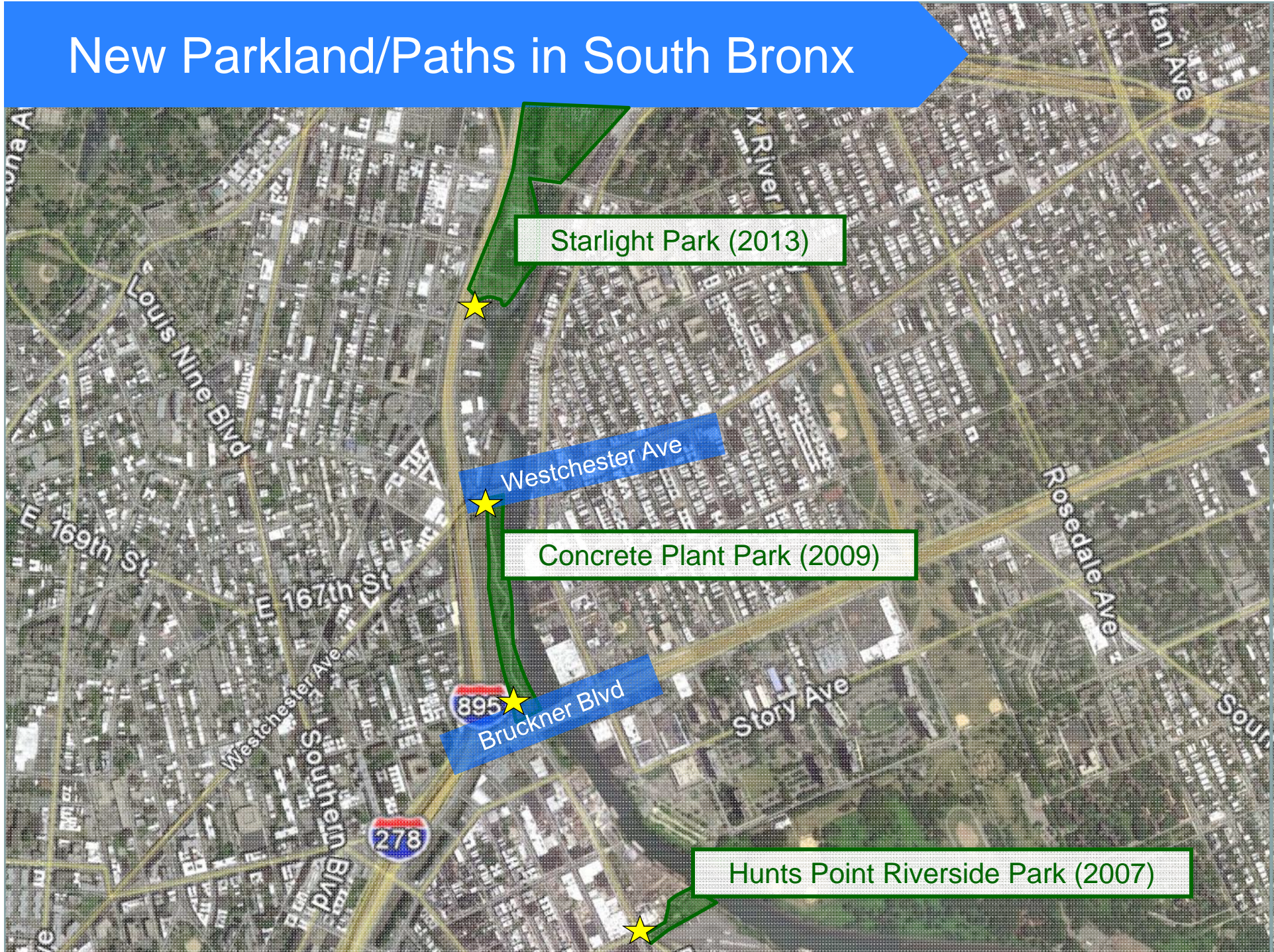
Transportation Issues



- New parks are a community asset, but difficult to **access**
- Greenway paths improve mobility, but lack **connectivity**
- **Need to maintain traffic flow in congested areas**



New Parkland/Paths in South Bronx



Starlight Park (2013)

Westchester Ave

Concrete Plant Park (2009)

Bruckner Blvd

Hunts Point Riverside Park (2007)

Westchester Ave

Overview

Concrete Plant Park to Starlight Park Connection

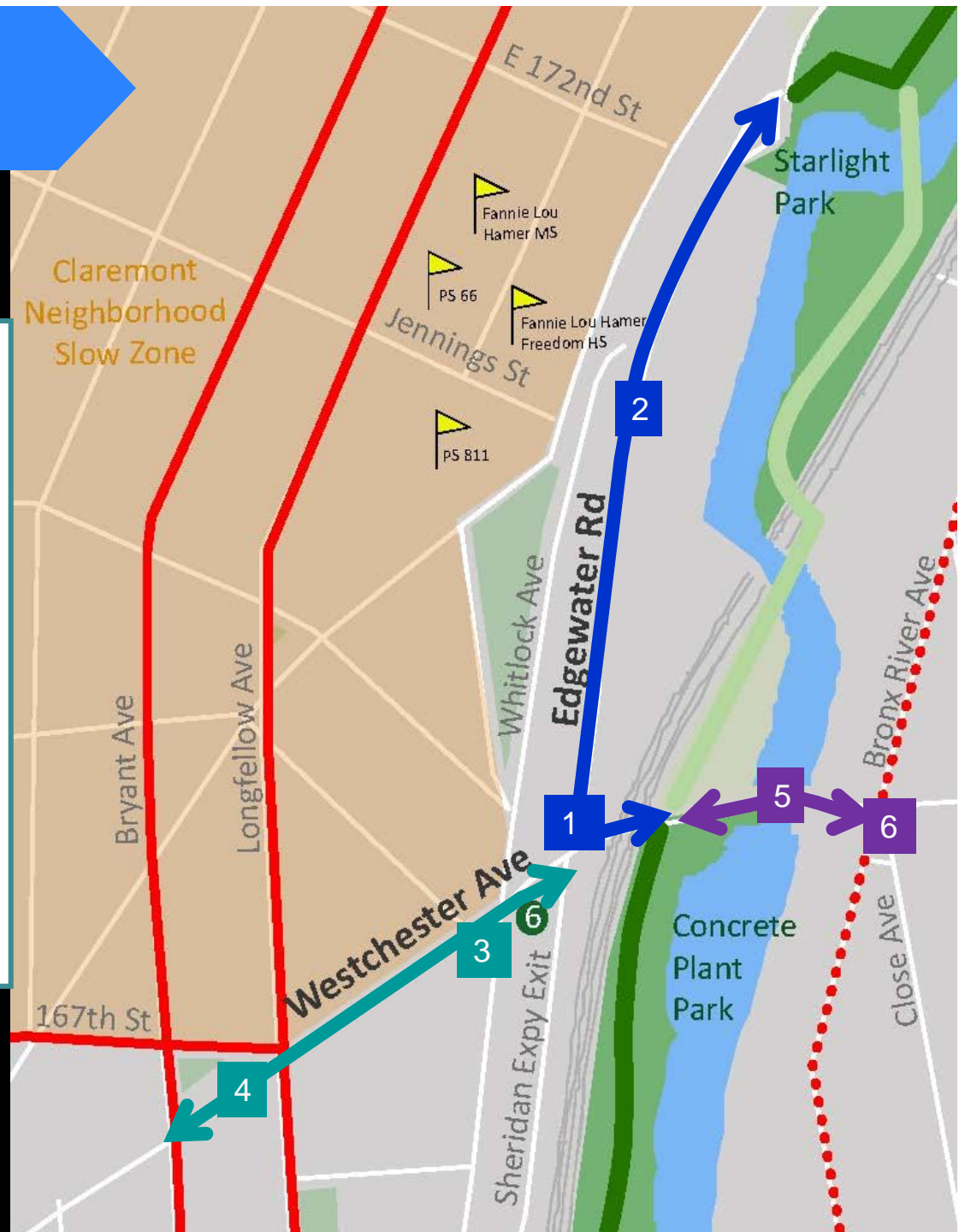
- 1 Crossing at Edgewater Rd
- 2 Edgewater Rd to Starlight Park

Greenway Access from the West

- 3 Whitlock Ave Intersection
- 4 Connection to Bicycle Routes

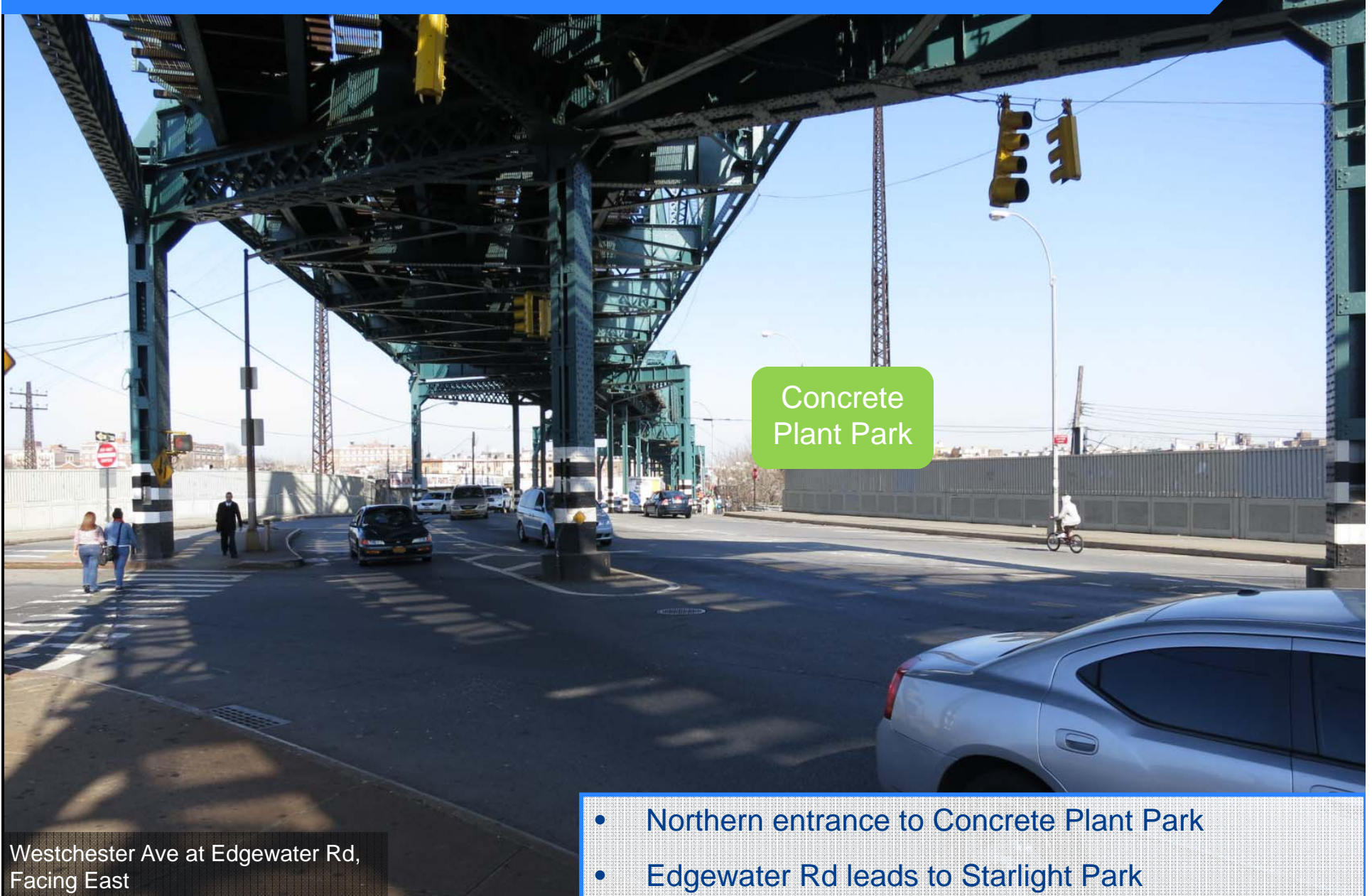
Greenway Access from the East

- 5 Bicycle Connection Across Bridge
- 6 Bronx River Ave Intersection



Concrete Plant Park to Starlight Park Connection

1 - Edgewater Rd Intersection: Existing Conditions

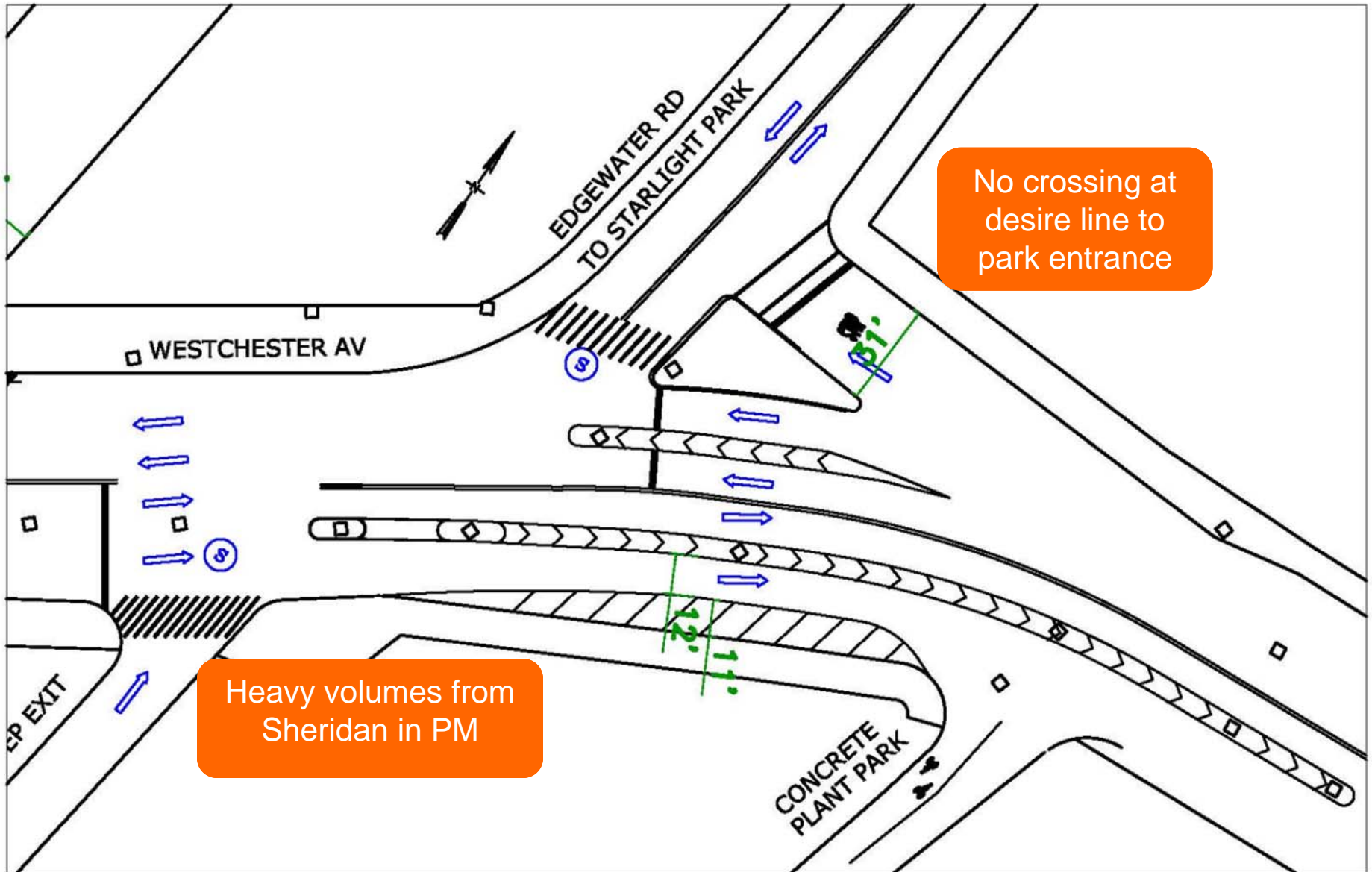


Westchester Ave at Edgewater Rd,
Facing East

- Northern entrance to Concrete Plant Park
- Edgewater Rd leads to Starlight Park

Concrete Plant Park to Starlight Park Connection

1 - Edgewater Rd Intersection: Existing Conditions

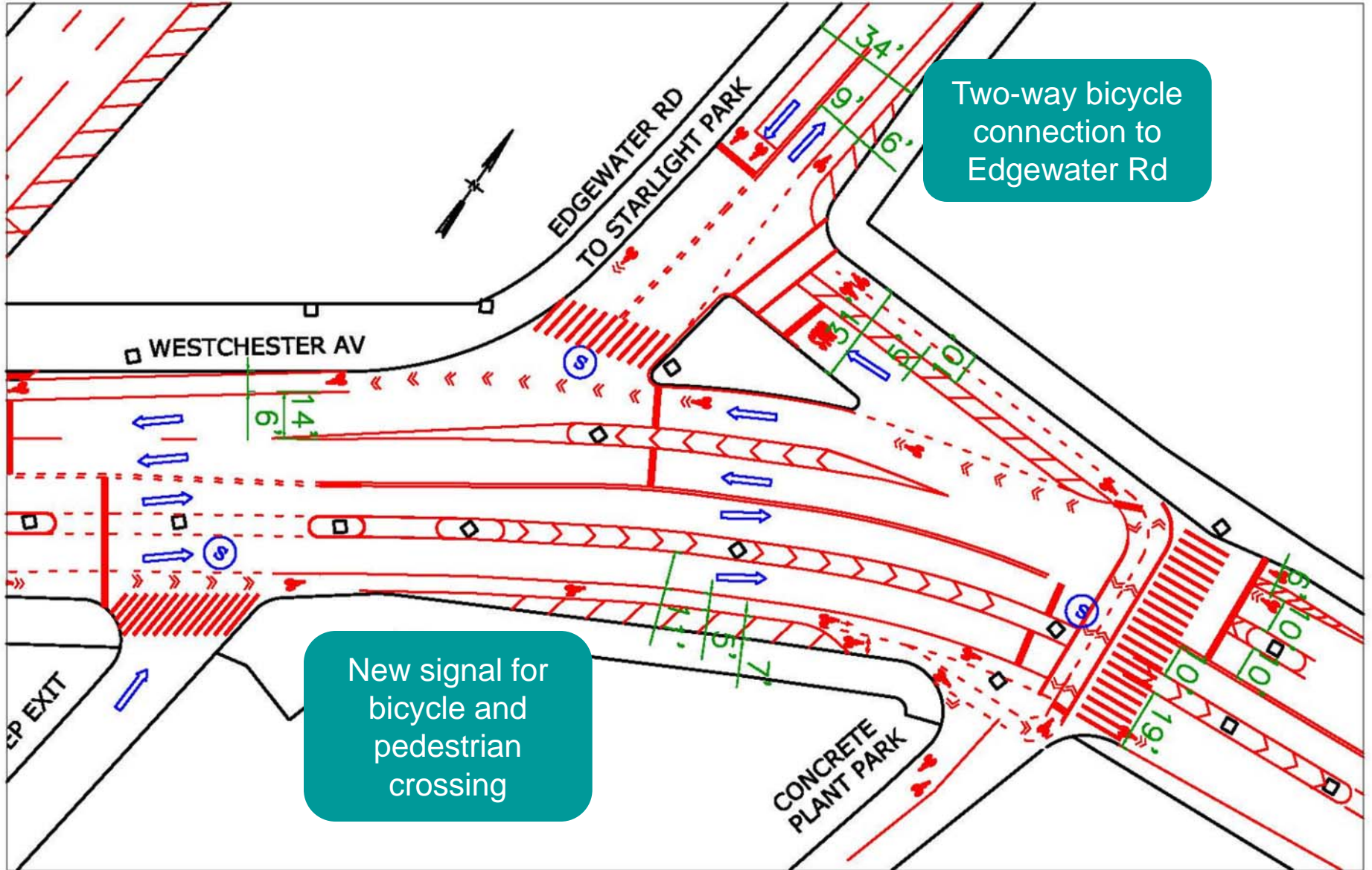


No crossing at
desire line to
park entrance

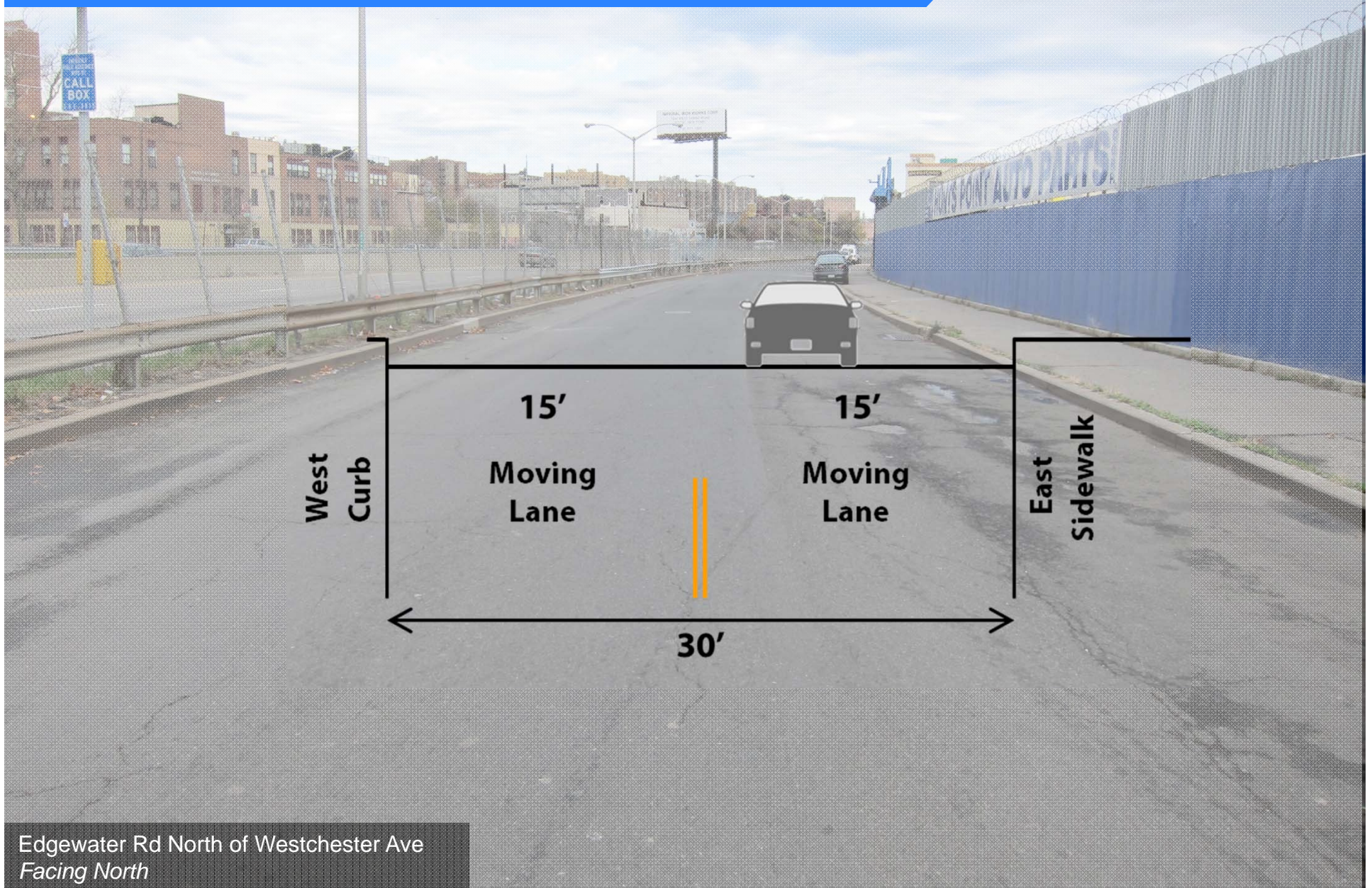
Heavy volumes from
Sheridan in PM

Concrete Plant Park to Starlight Park Connection

1 - Edgewater Rd Intersection: Proposed Improvements



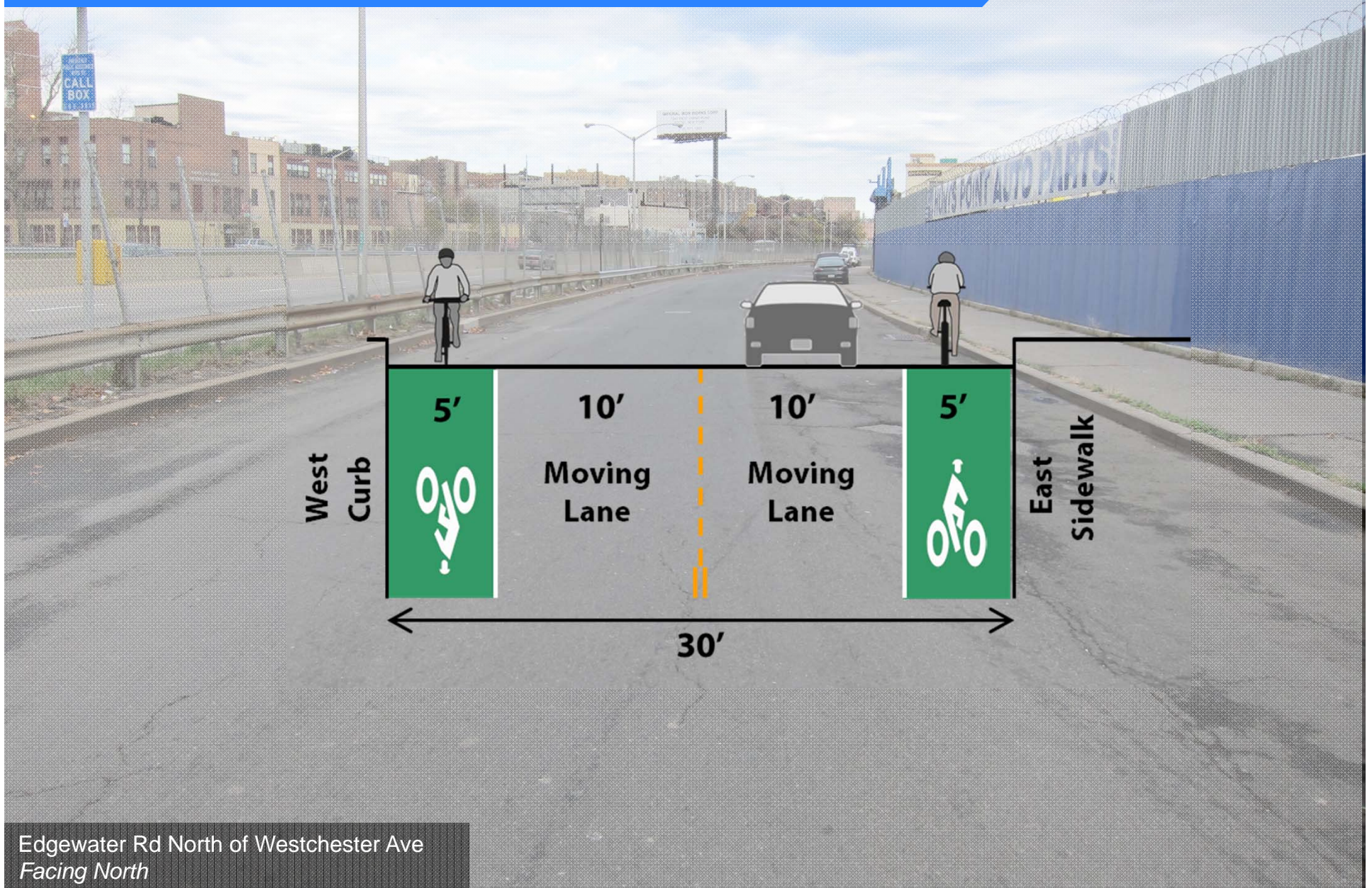
Concrete Plant Park to Starlight Park Connection 2 - Edgewater Rd: Existing Conditions



Edgewater Rd North of Westchester Ave
Facing North

Concrete Plant Park to Starlight Park Connection

2 - Edgewater Rd: Proposed Improvements



Edgewater Rd North of Westchester Ave
Facing North

Greenway Access from the West

3 - Whitlock Ave Intersection: Existing Conditions

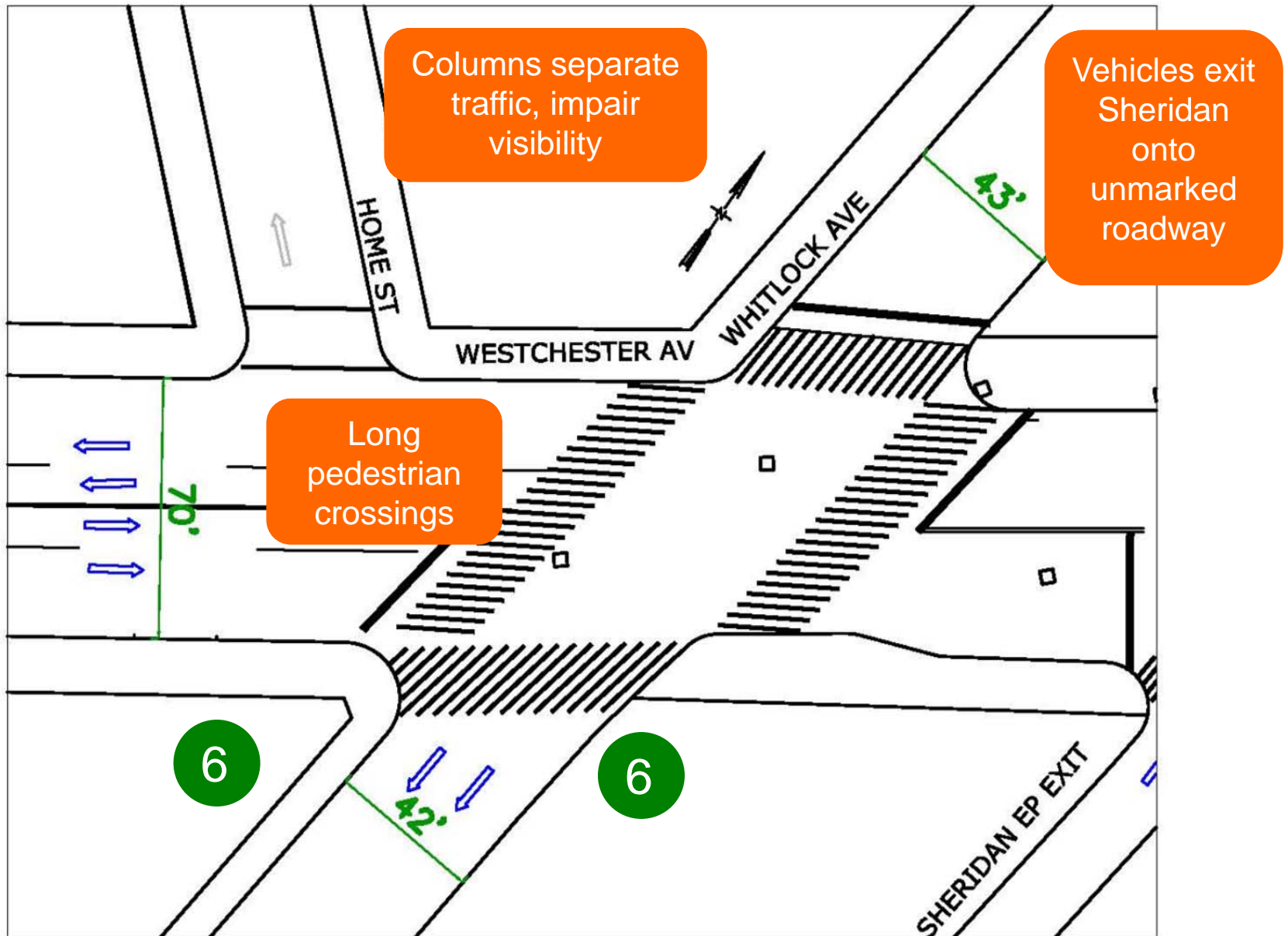


- Route to greenway from neighborhoods to the west
- High volume commercial strip and truck route intersects Sheridan Expressway exit
- 6 Train Subway Station (high pedestrian volumes)

Whitlock Ave/Westchester Ave
Facing South

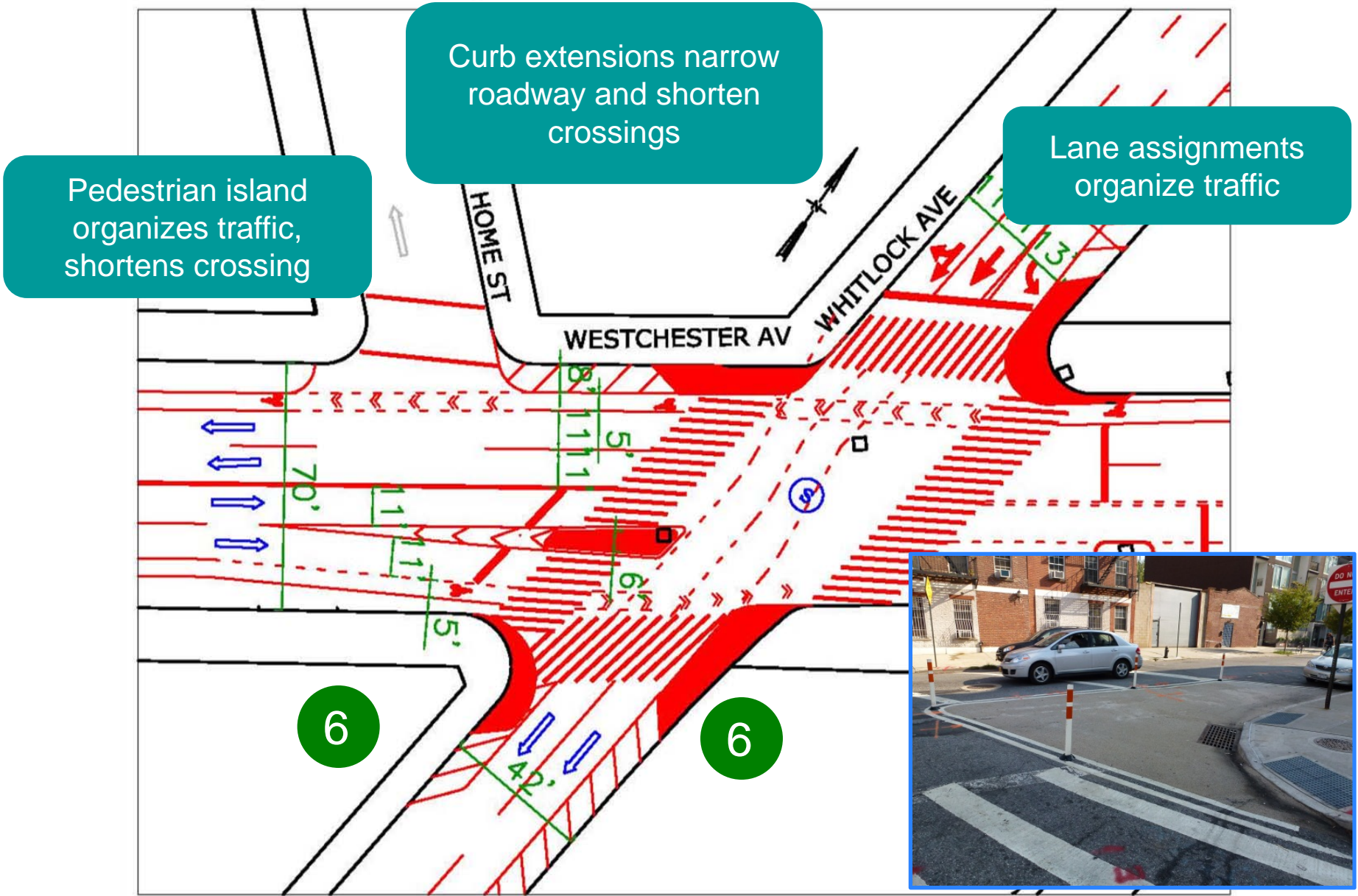
Greenway Access from the West

3 - Whitlock Ave Intersection: Existing Conditions



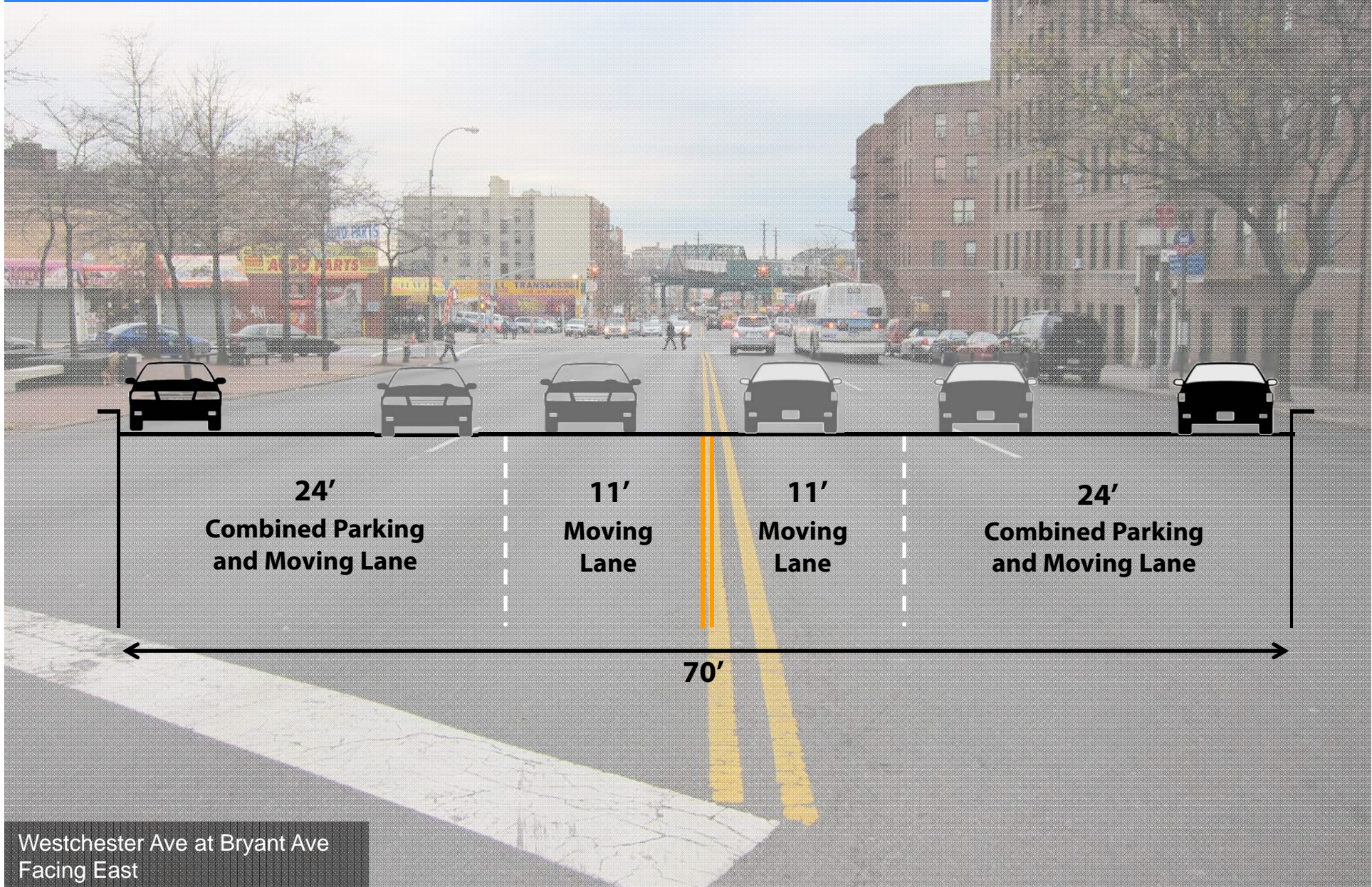
Greenway Access from the West

3 - Whitlock Ave Intersection: Proposed Improvements



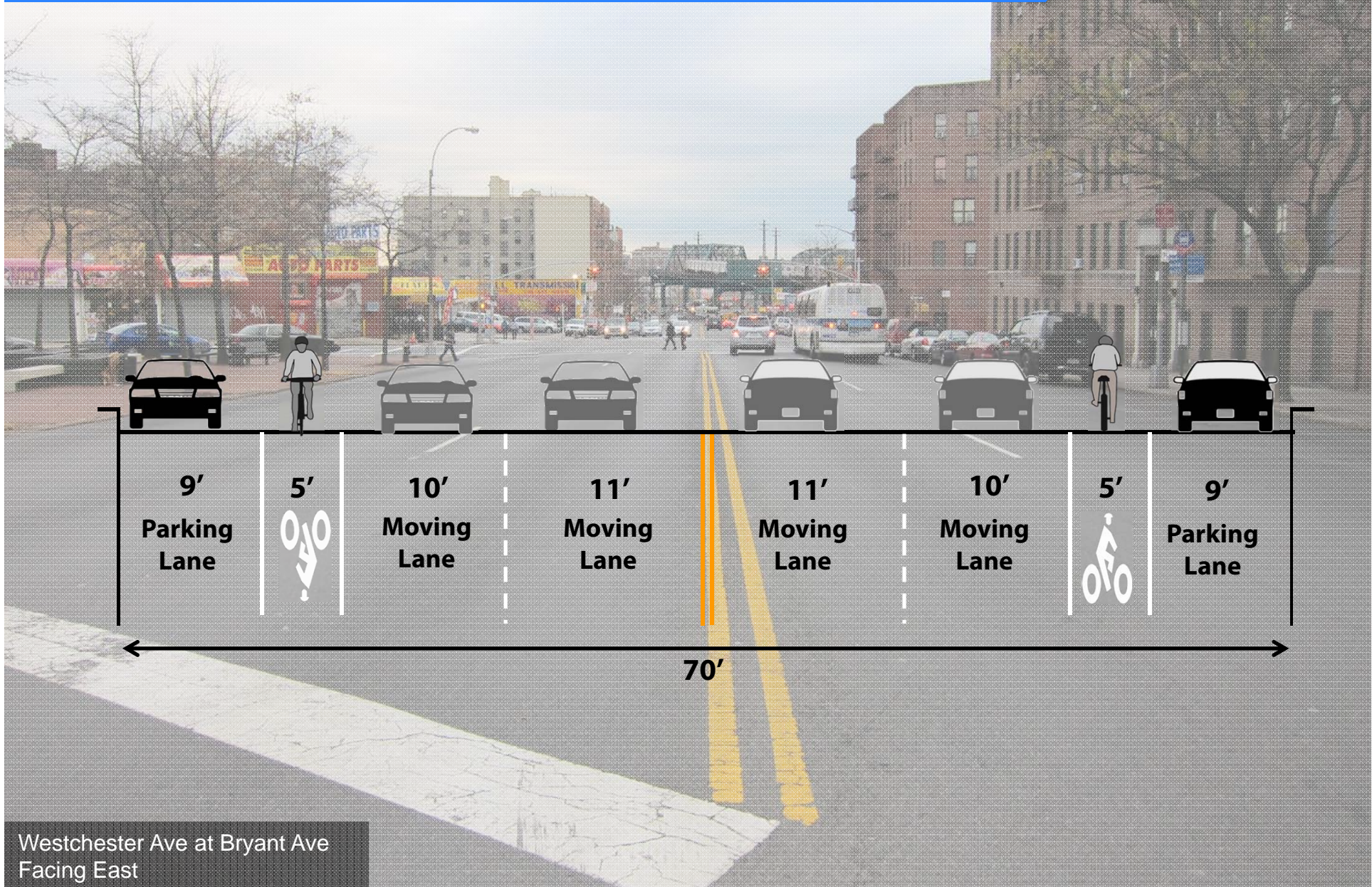
Greenway Access from the West

4 - Westchester Ave: Existing Conditions



Greenway Access from the West

4 - Westchester Ave: Proposed Improvements



Greenway Access from the East

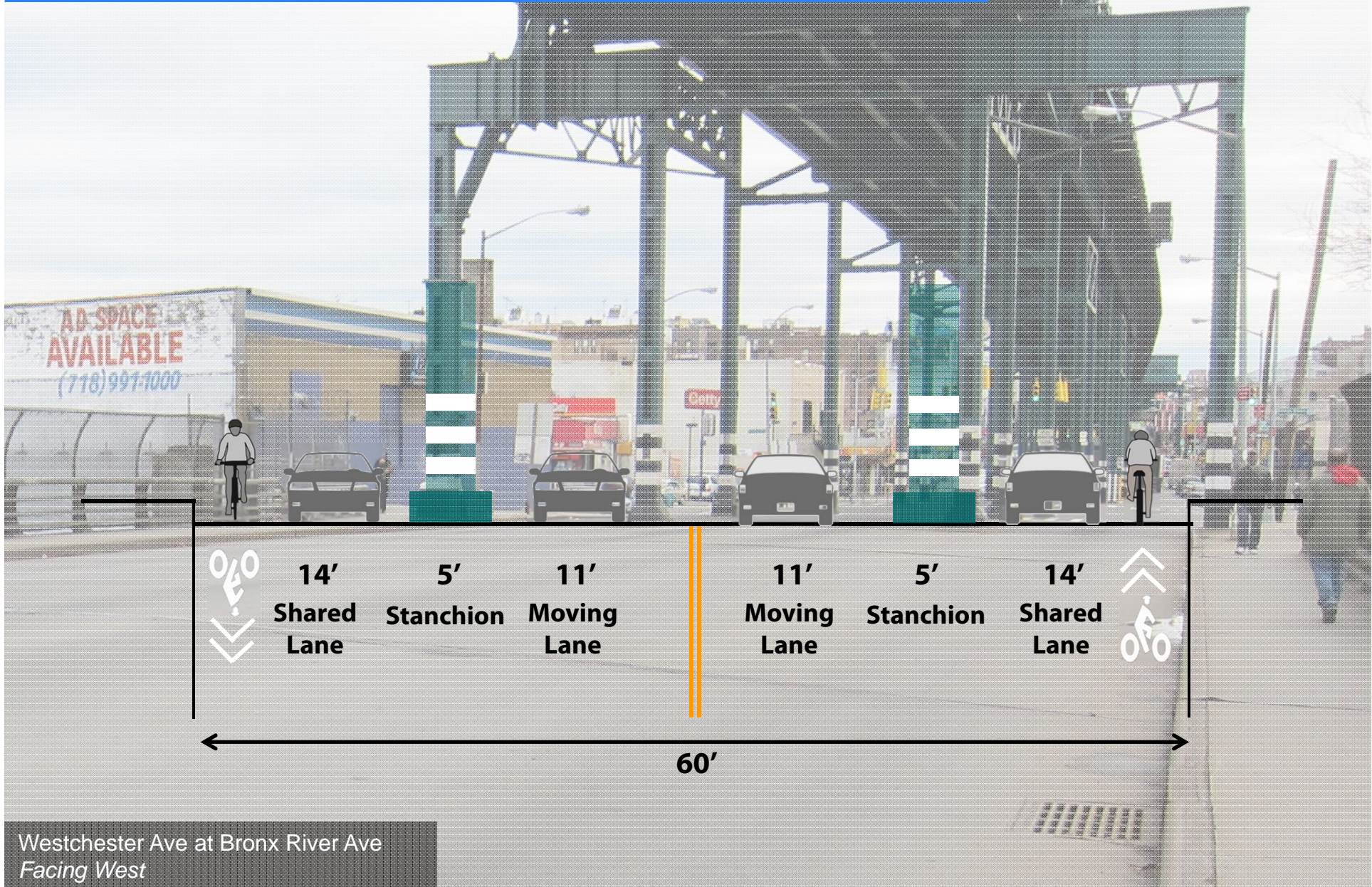
5 - Westchester Ave: Existing Conditions



Westchester Ave at Bronx River Ave
Facing West

Greenway Access from the East

5 - Westchester Ave: Existing Conditions



Greenway Access from the East

6 - Bronx River Ave Intersection – Existing Conditions

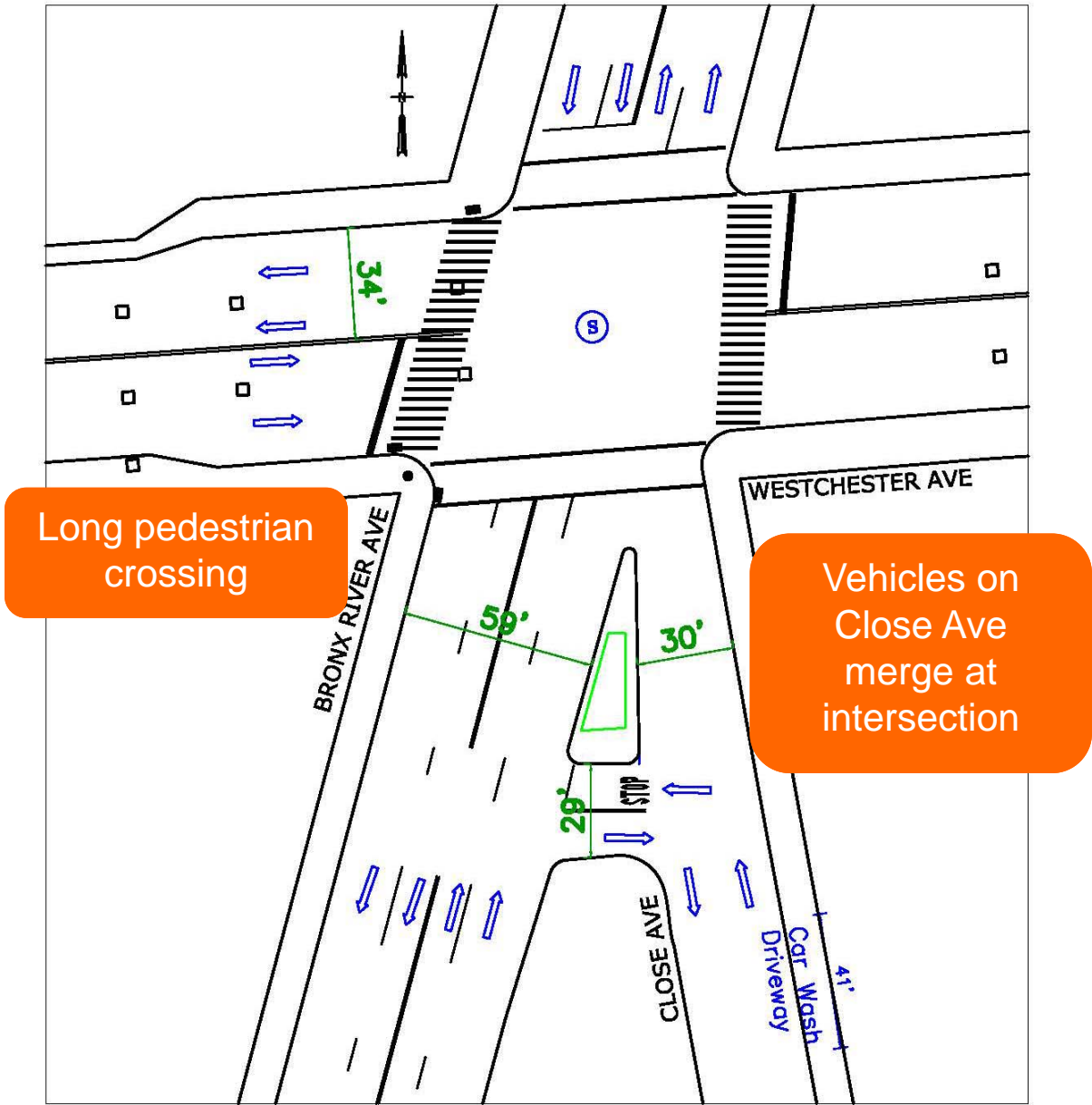


Westchester Ave at Bronx River Ave
Facing West

- Route to greenway from neighborhoods to the east
- 5-Leg intersection

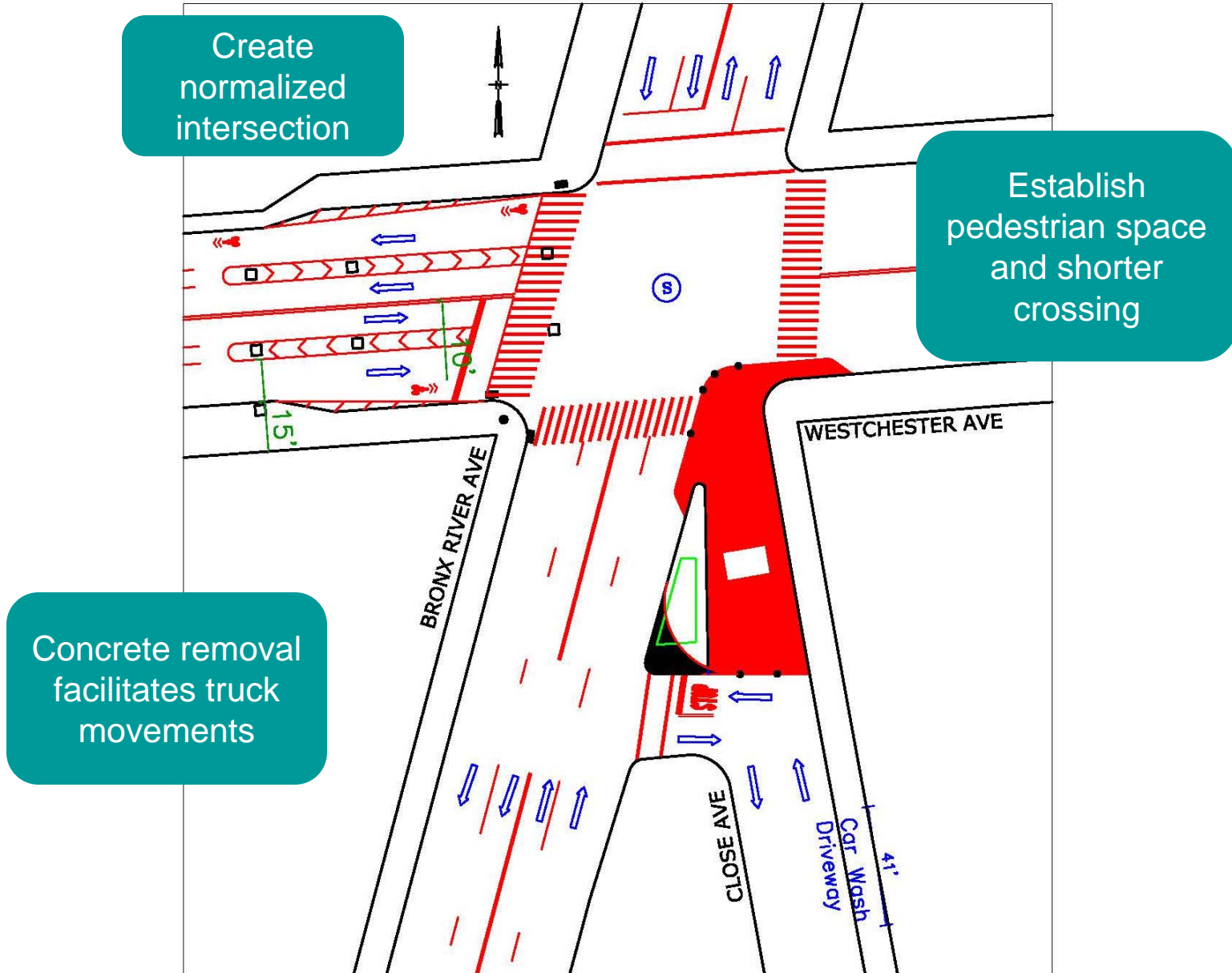
Greenway Access from the East

6 - Bronx River Ave Intersection – Existing Conditions



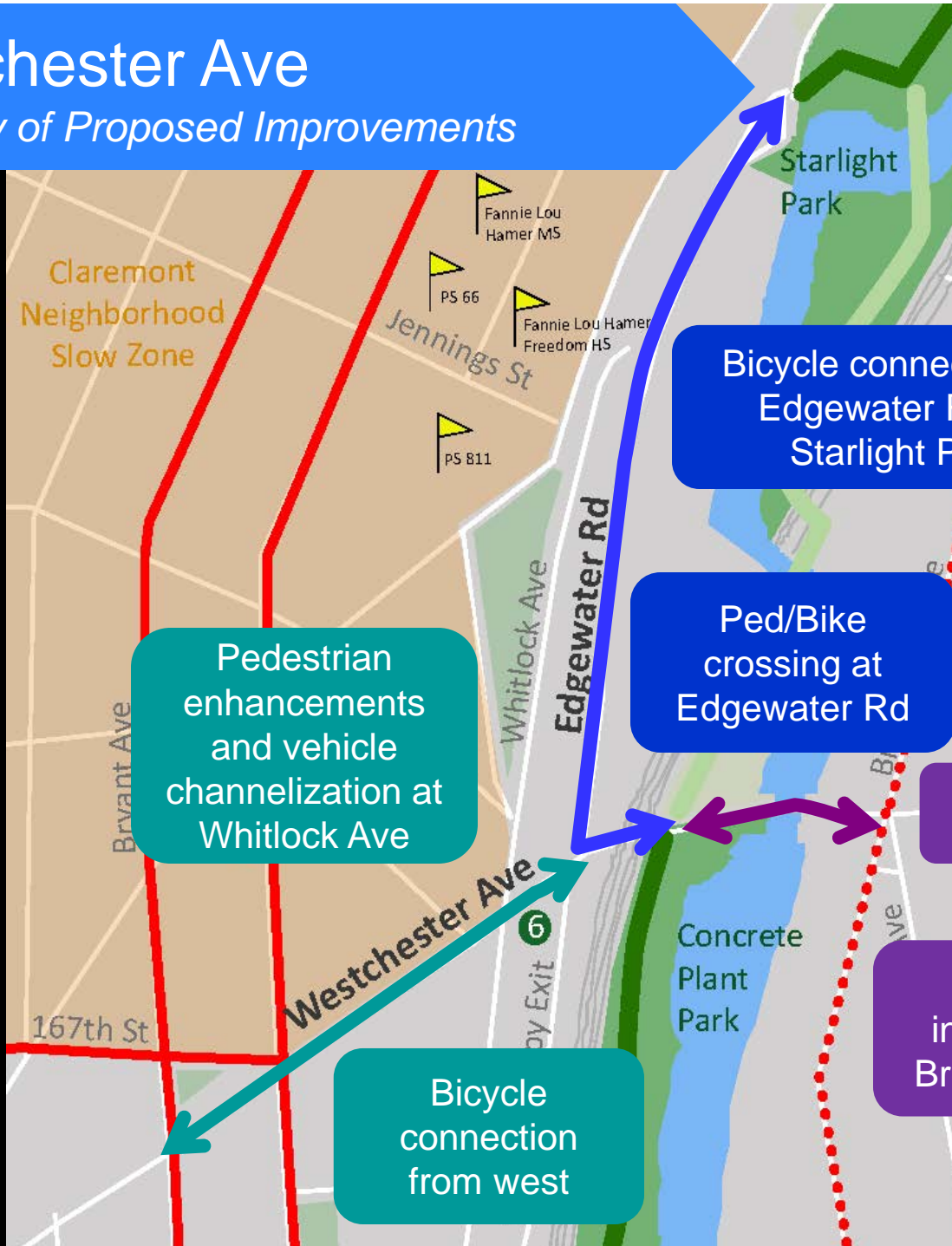
Greenway Access from the East

6 - Bronx River Ave Intersection – Proposed Improvements



Westchester Ave

Summary of Proposed Improvements



Bicycle connection on Edgewater Rd to Starlight Park

Ped/Bike crossing at Edgewater Rd

Bicycle connection across bridge

Simplified intersection at Bronx River Ave

Pedestrian enhancements and vehicle channelization at Whitlock Ave

Bicycle connection from west

www.nyc.gov/dot

Thank
You