

Bronx River Greenway Southern Connections

Pedestrian/Bicycle Access to Concrete Plant & Starlight Parks



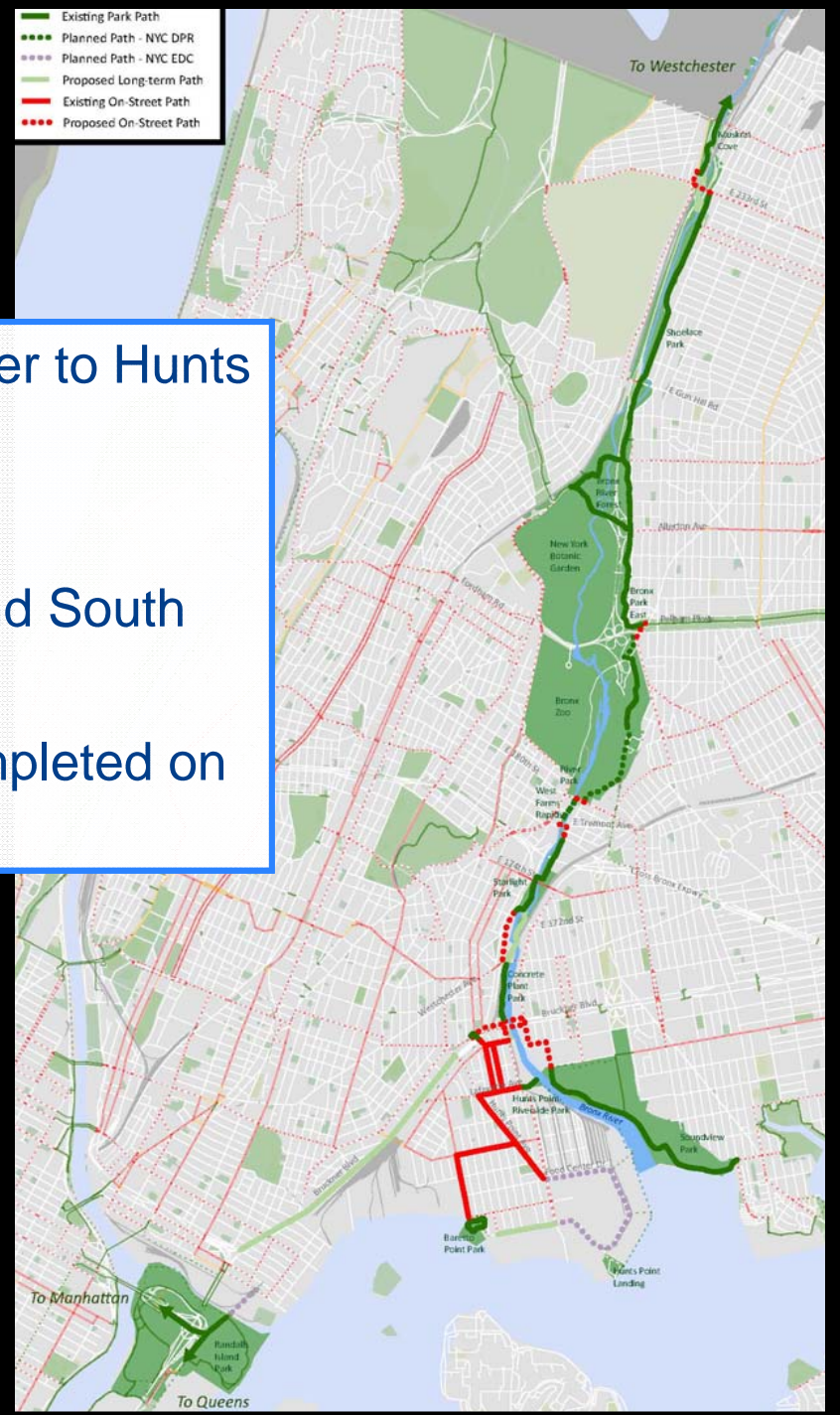
Commissioner Janette Sadik-Khan, New York City Department of Transportation
Presented to Bronx Community Board 2, January 16, 2013



Bronx River Greenway

Transportation Corridor

- 10 mile route from Westchester border to Hunts Point/Soundview
- Key north-south bicycle corridor
- Connections to Mosholu, Pelham, and South Bronx Greenways
- 6 out of 8 miles of off-street path completed on parkland



Bronx River Greenway

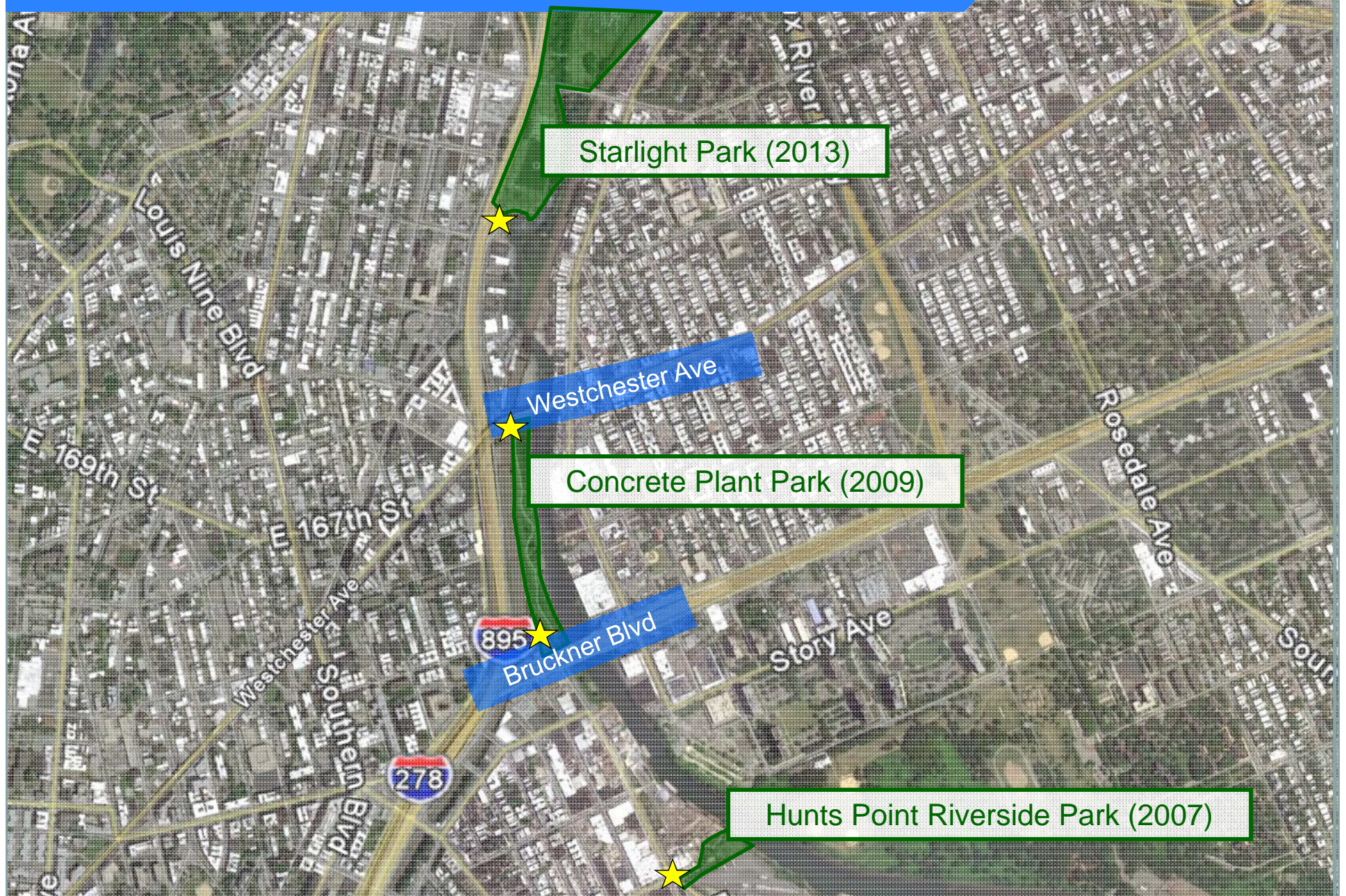
Transportation Issues



- New parks are a community asset, but difficult to **access**
- Greenway paths improve mobility, but lack **connectivity**
- Need to maintain traffic flow in congested areas



New Parkland/Paths in South Bronx



Westchester Ave

Overview

Concrete Plant Park to Starlight Park Connection

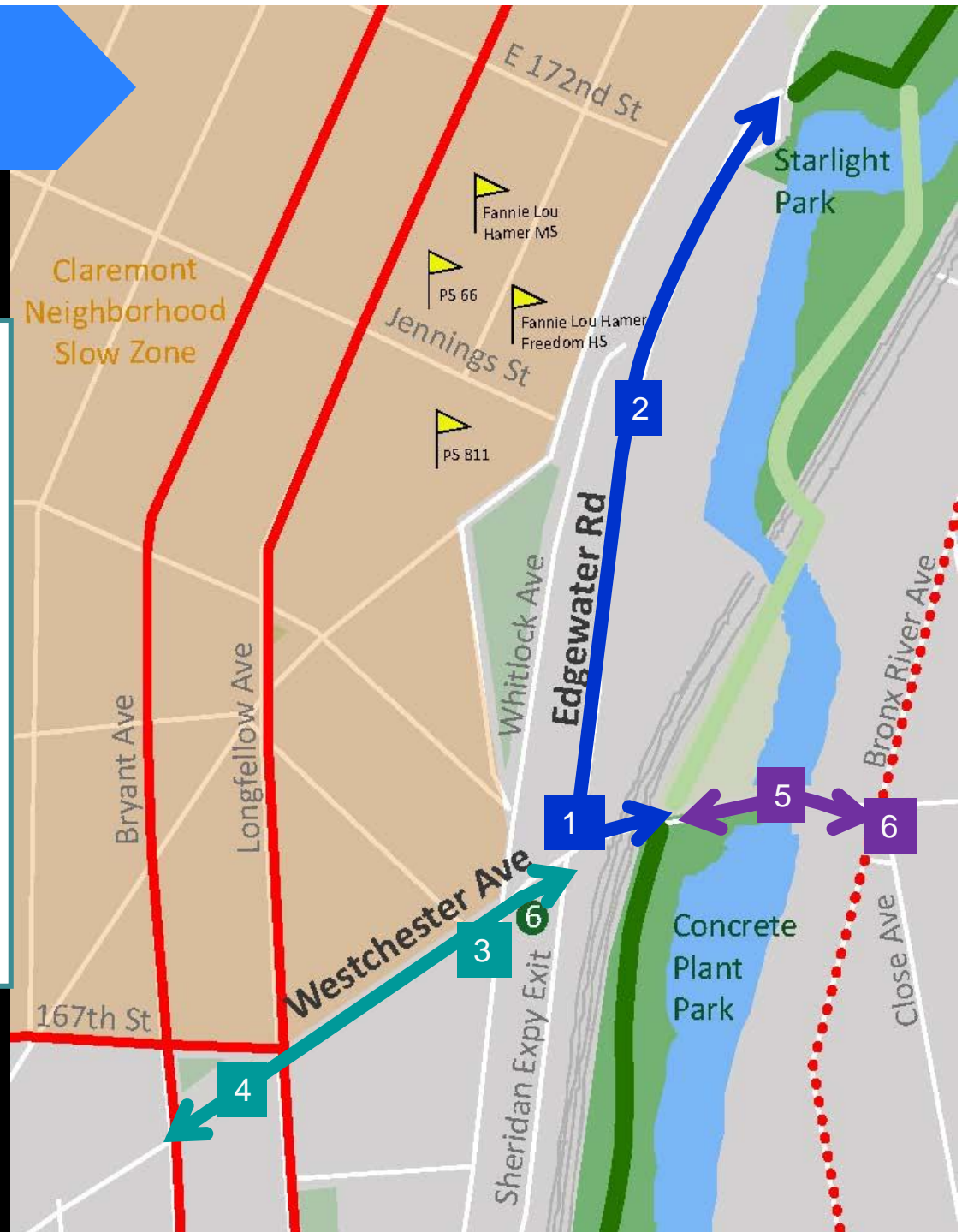
- 1 Crossing at Edgewater Rd
- 2 Edgewater Rd to Starlight Park

Greenway Access from the West

- 3 Whitlock Ave Intersection
- 4 Connection to Bicycle Routes

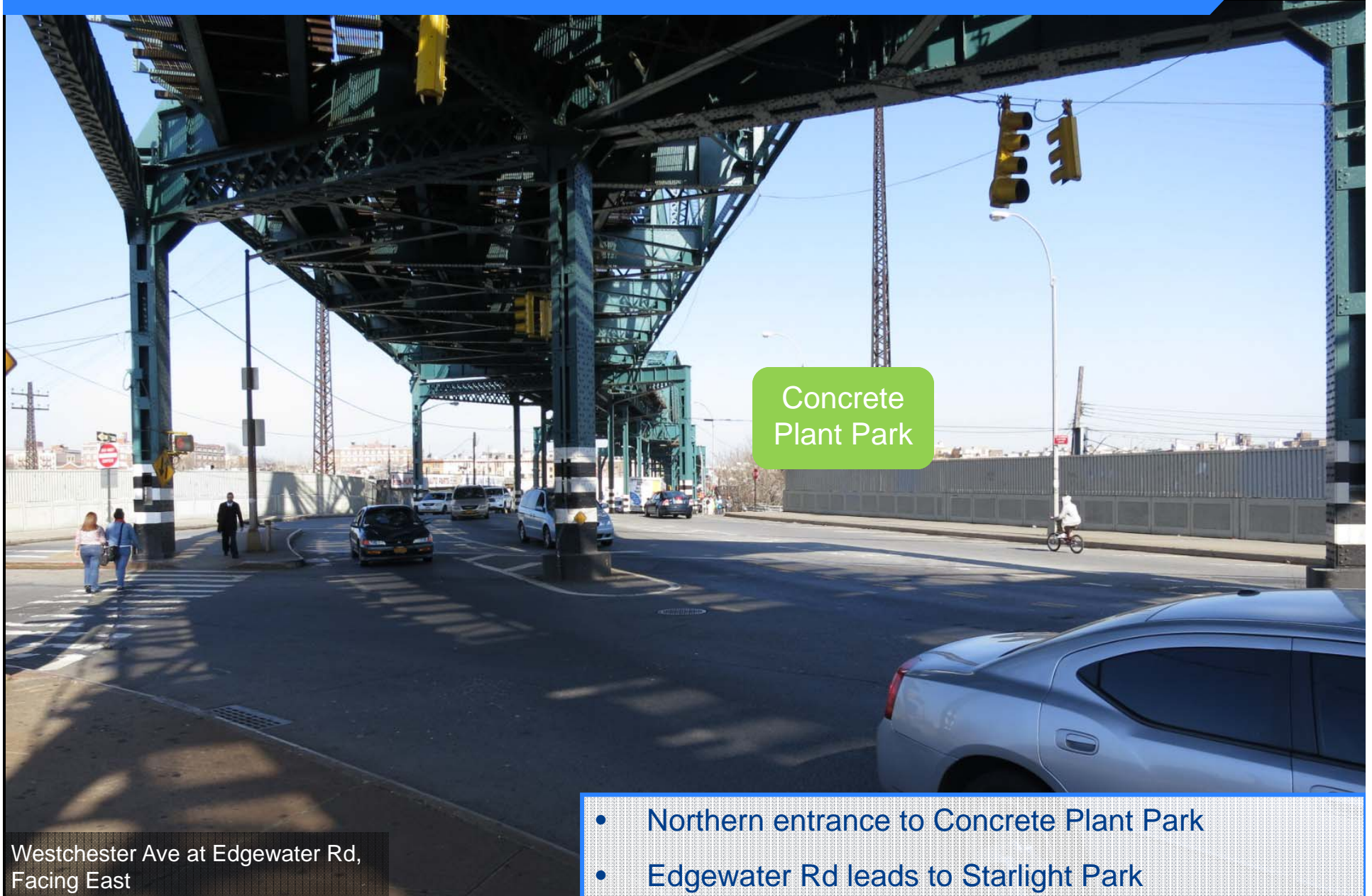
Greenway Access from the East

- 5 Bicycle Connection Across Bridge
- 6 Bronx River Ave Intersection



Concrete Plant Park to Starlight Park Connection

1 - Edgewater Rd Intersection: Existing Conditions

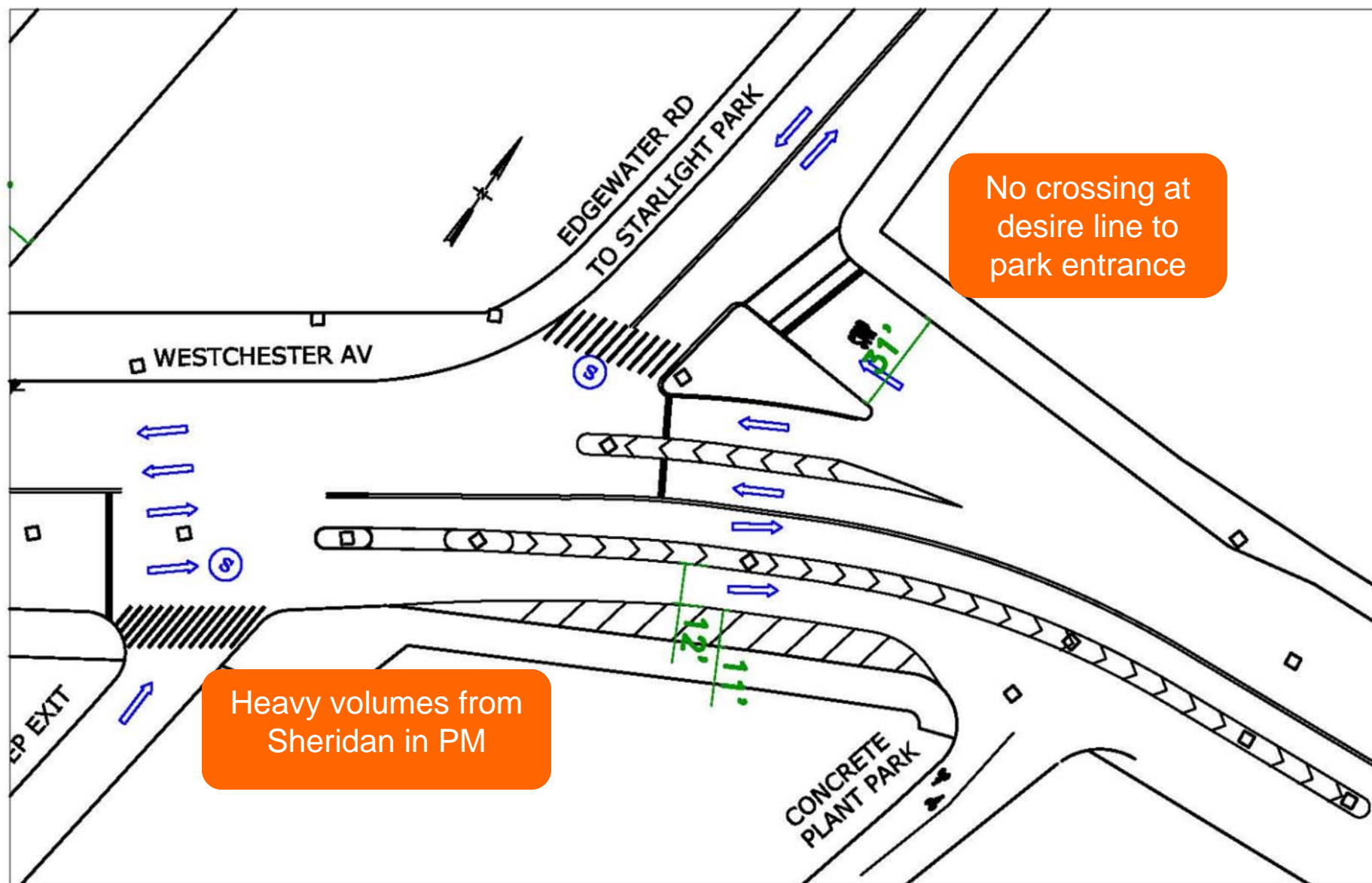


Westchester Ave at Edgewater Rd,
Facing East

- Northern entrance to Concrete Plant Park
- Edgewater Rd leads to Starlight Park

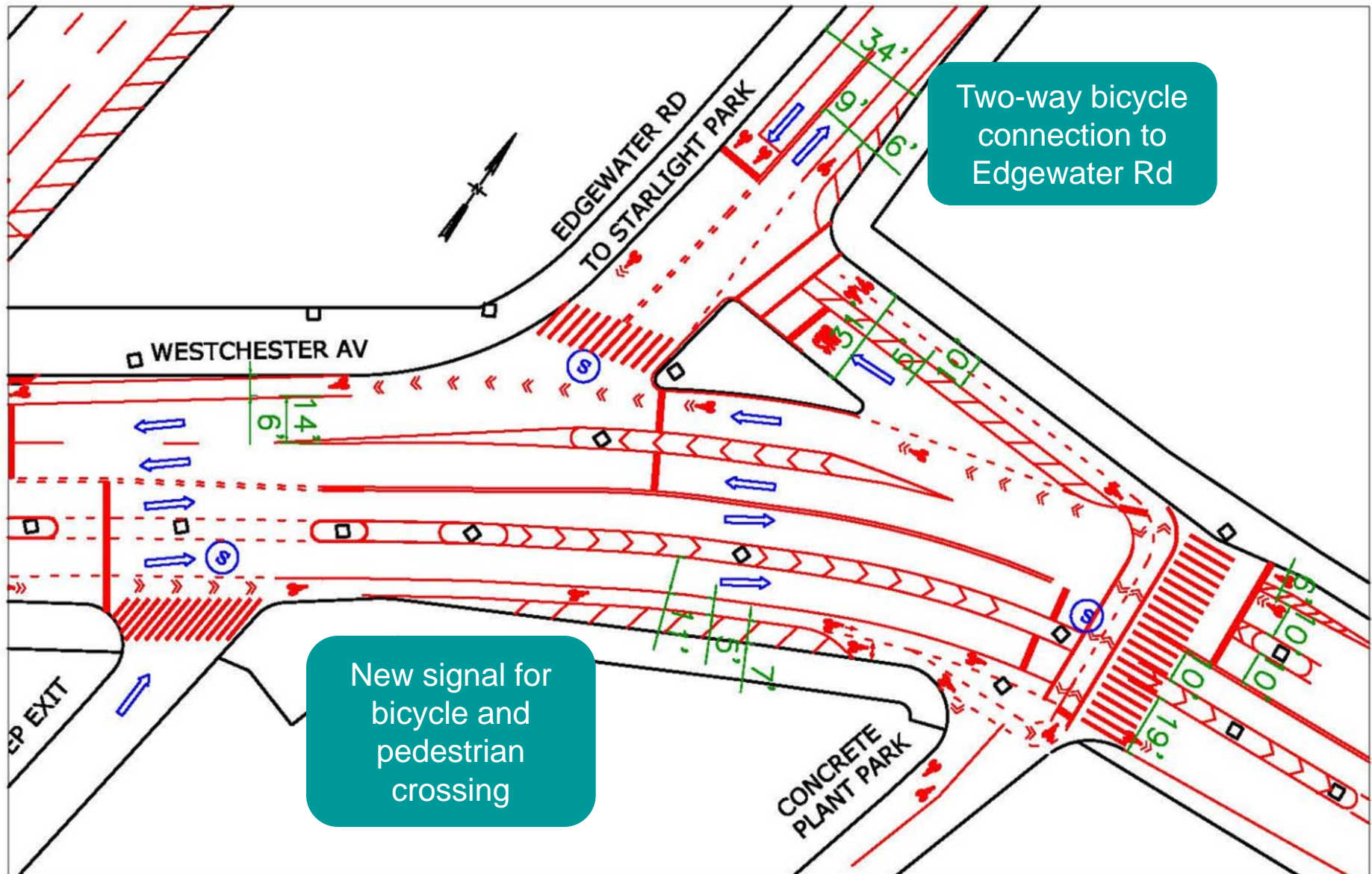
Concrete Plant Park to Starlight Park Connection

1 - Edgewater Rd Intersection: Existing Conditions

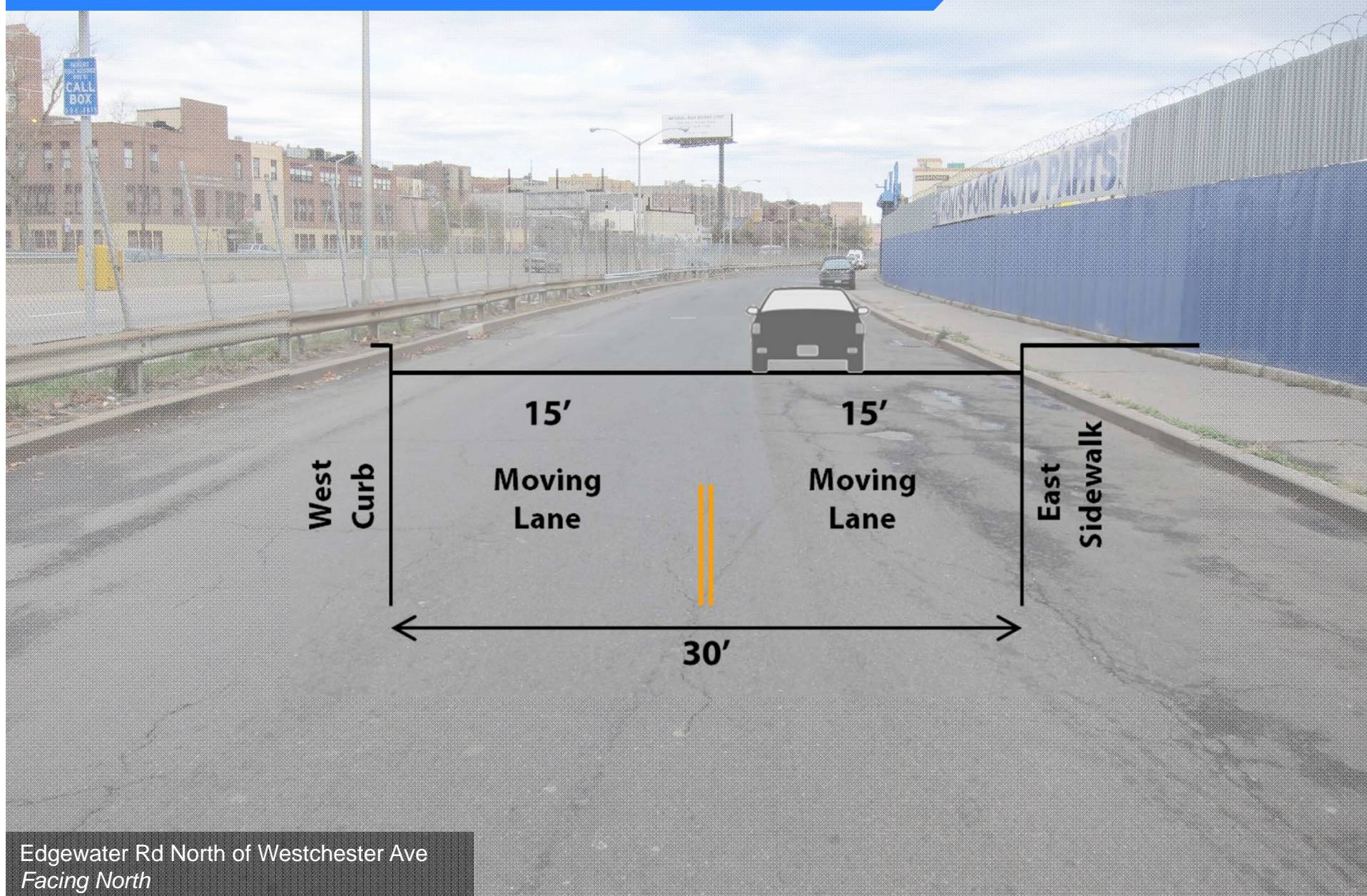


Concrete Plant Park to Starlight Park Connection

1 - Edgewater Rd Intersection: Proposed Improvements



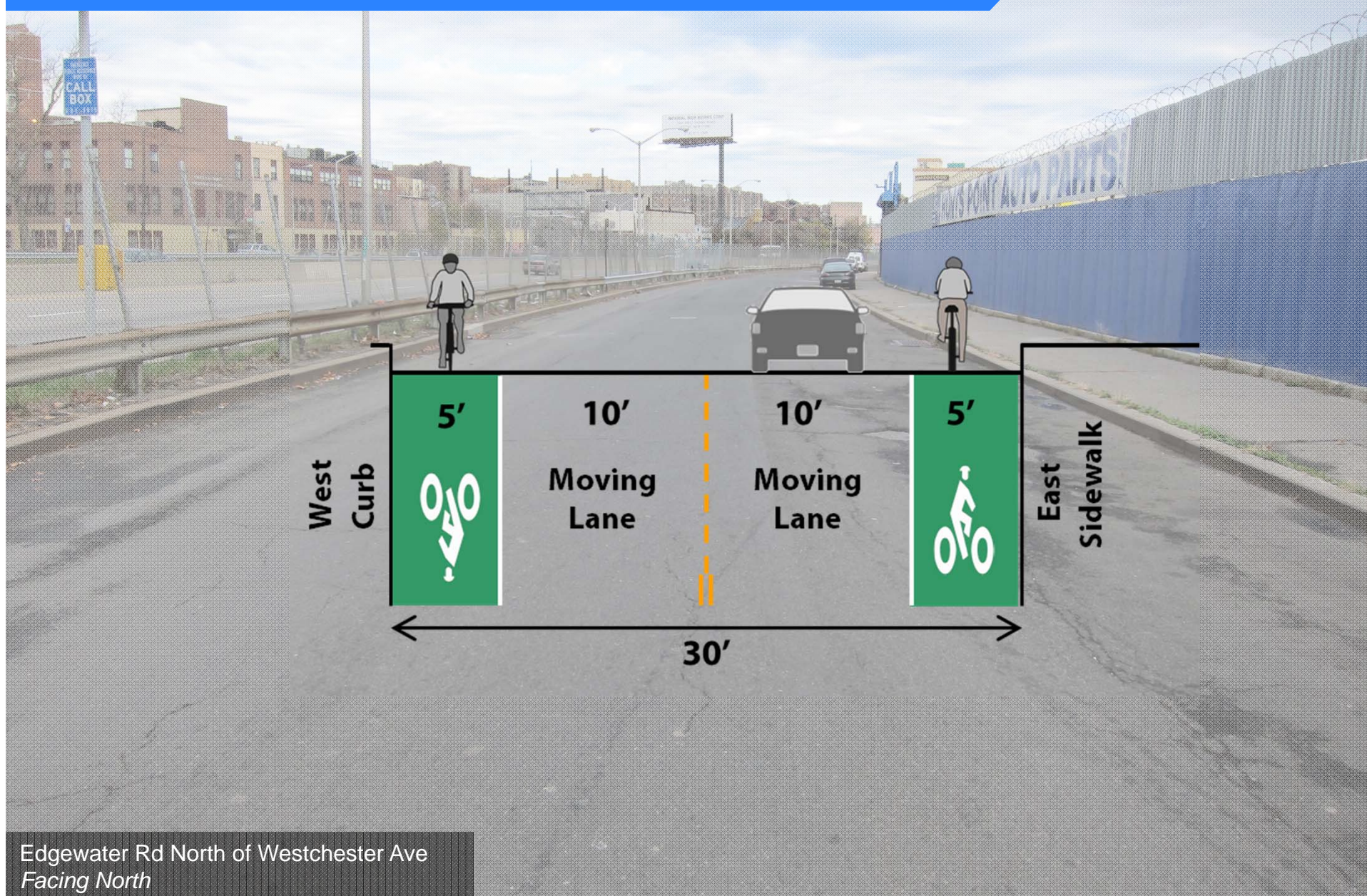
Concrete Plant Park to Starlight Park Connection 2 - Edgewater Rd: Existing Conditions



Edgewater Rd North of Westchester Ave
Facing North

Concrete Plant Park to Starlight Park Connection

2 - Edgewater Rd: Proposed Improvements



Greenway Access from the West

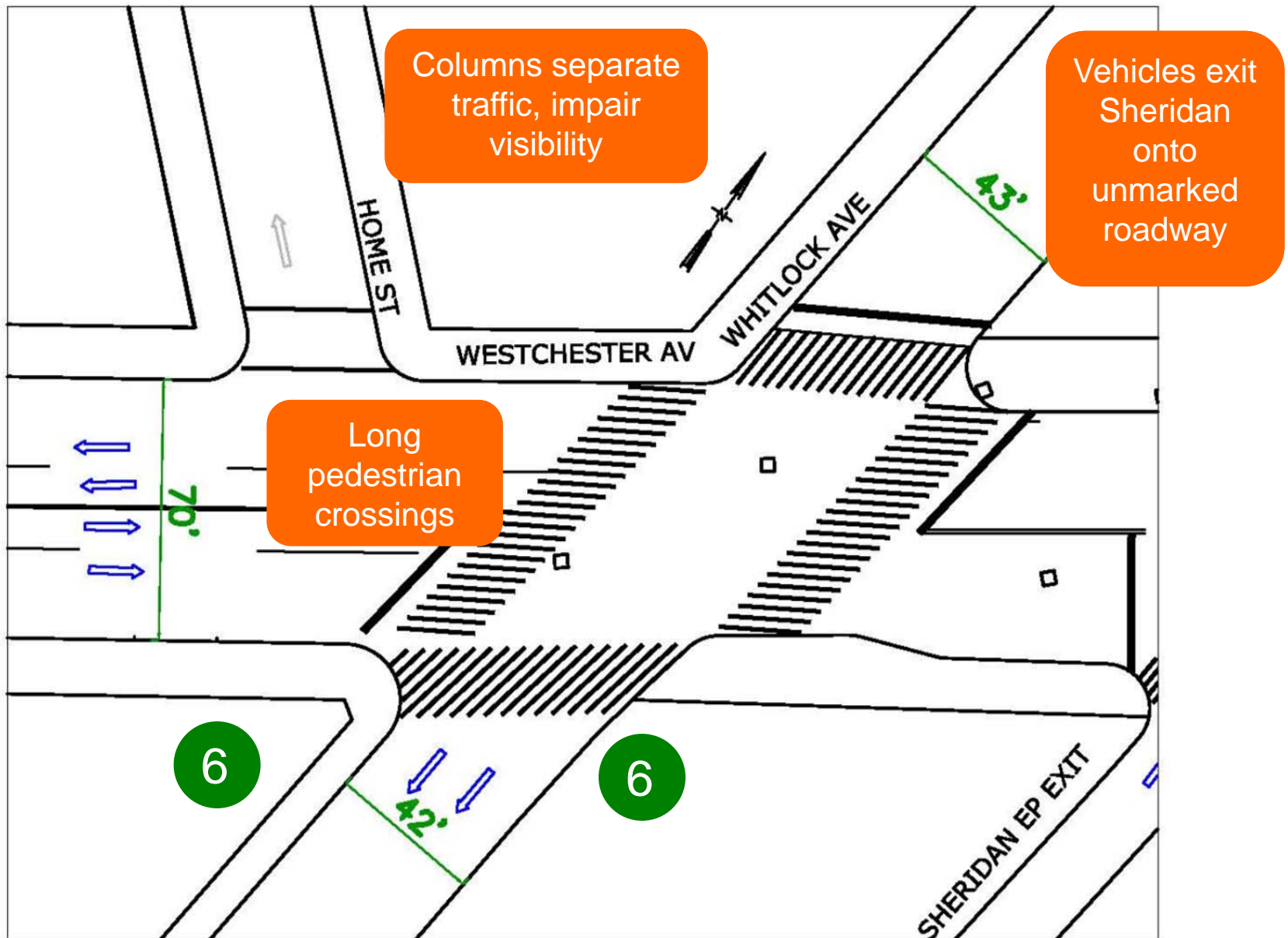
3 - Whitlock Ave Intersection: Existing Conditions



Whitlock Ave/Westchester Ave
Facing South

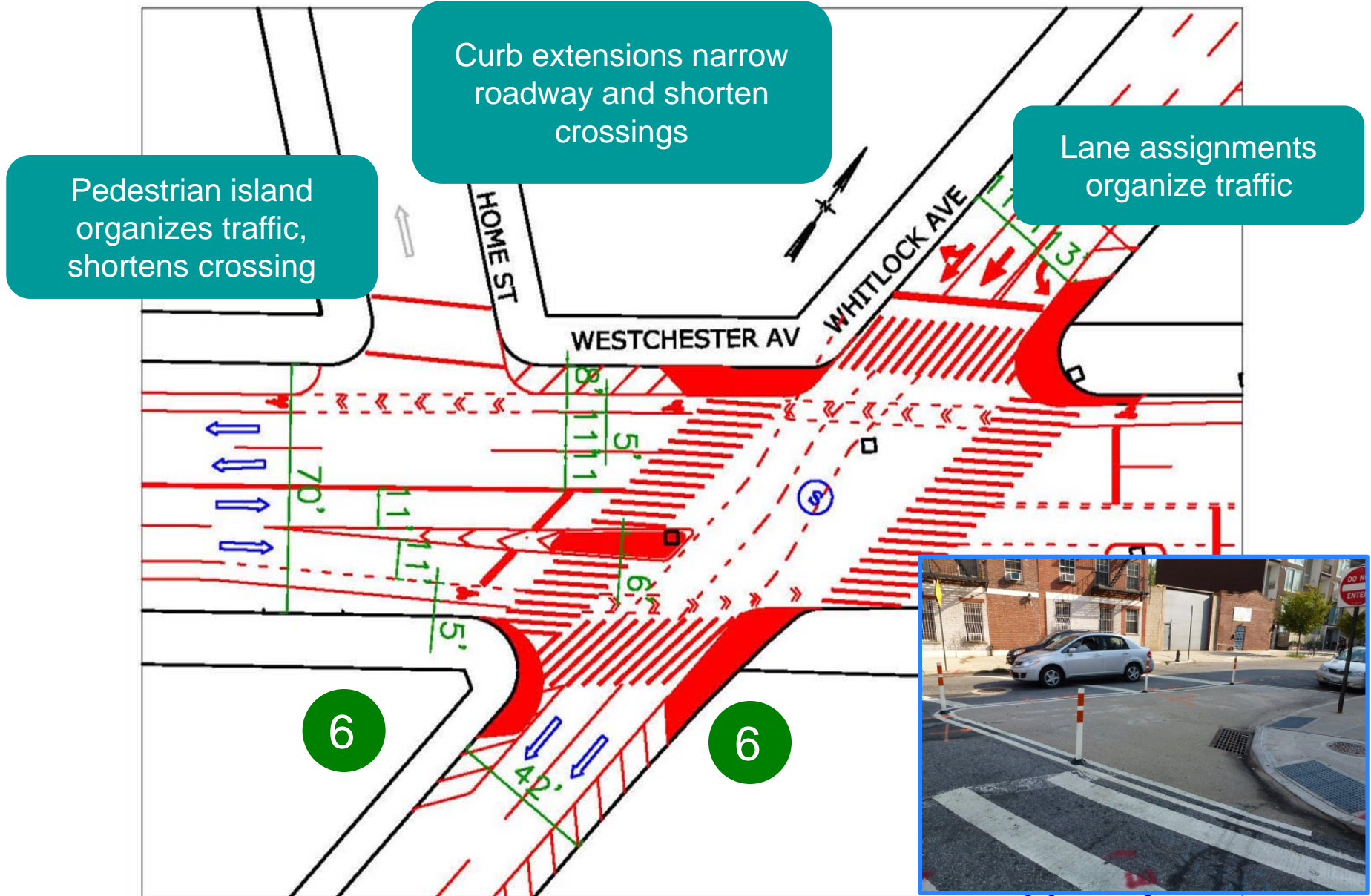
- Route to greenway from neighborhoods to the west
- High volume commercial strip and truck route intersects Sheridan Expressway exit
- 6 Train Subway Station (high pedestrian volumes)

3 - Whitlock Ave Intersection: Existing Conditions



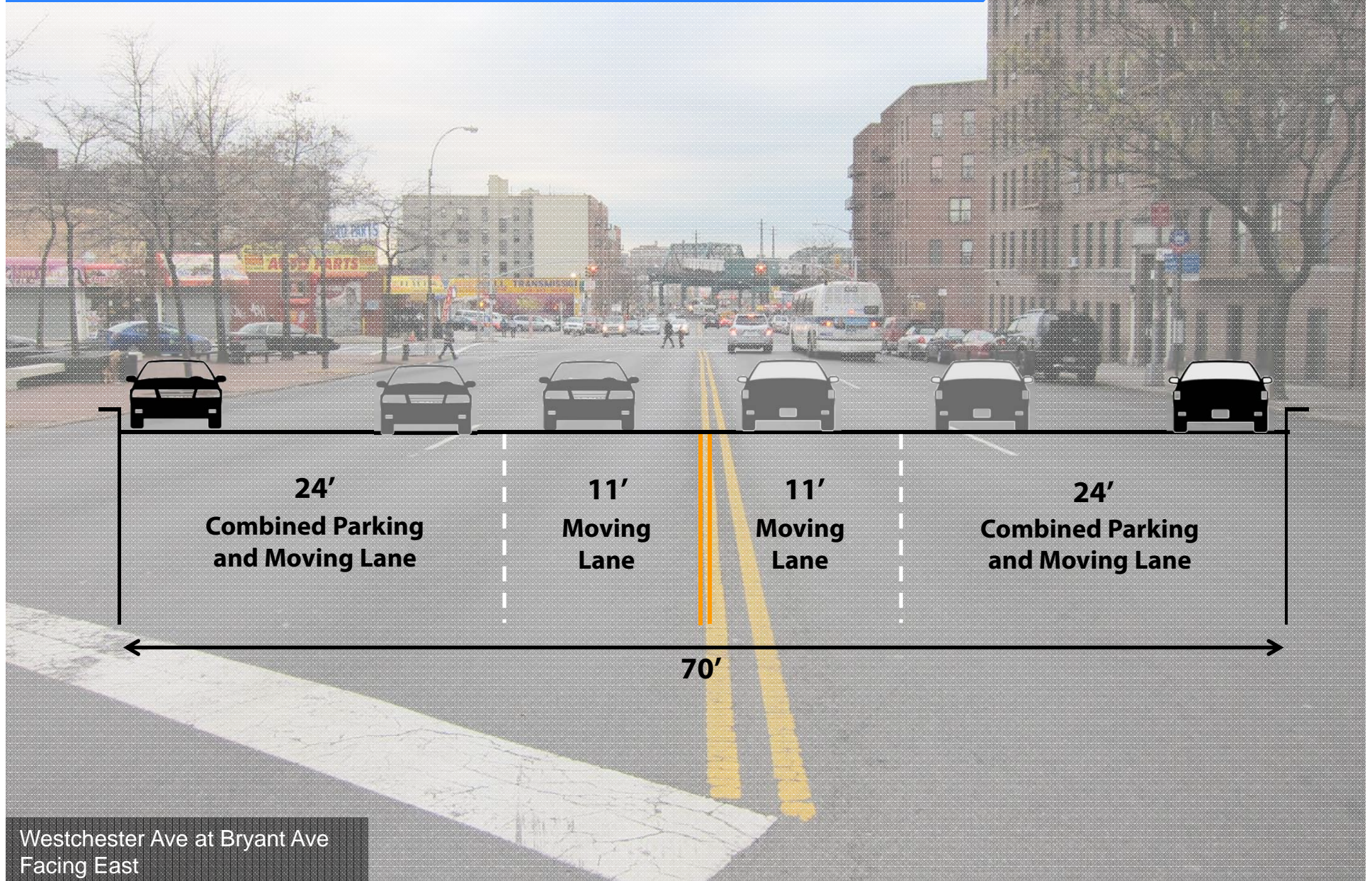
Greenway Access from the West

3 - Whitlock Ave Intersection: Proposed Improvements



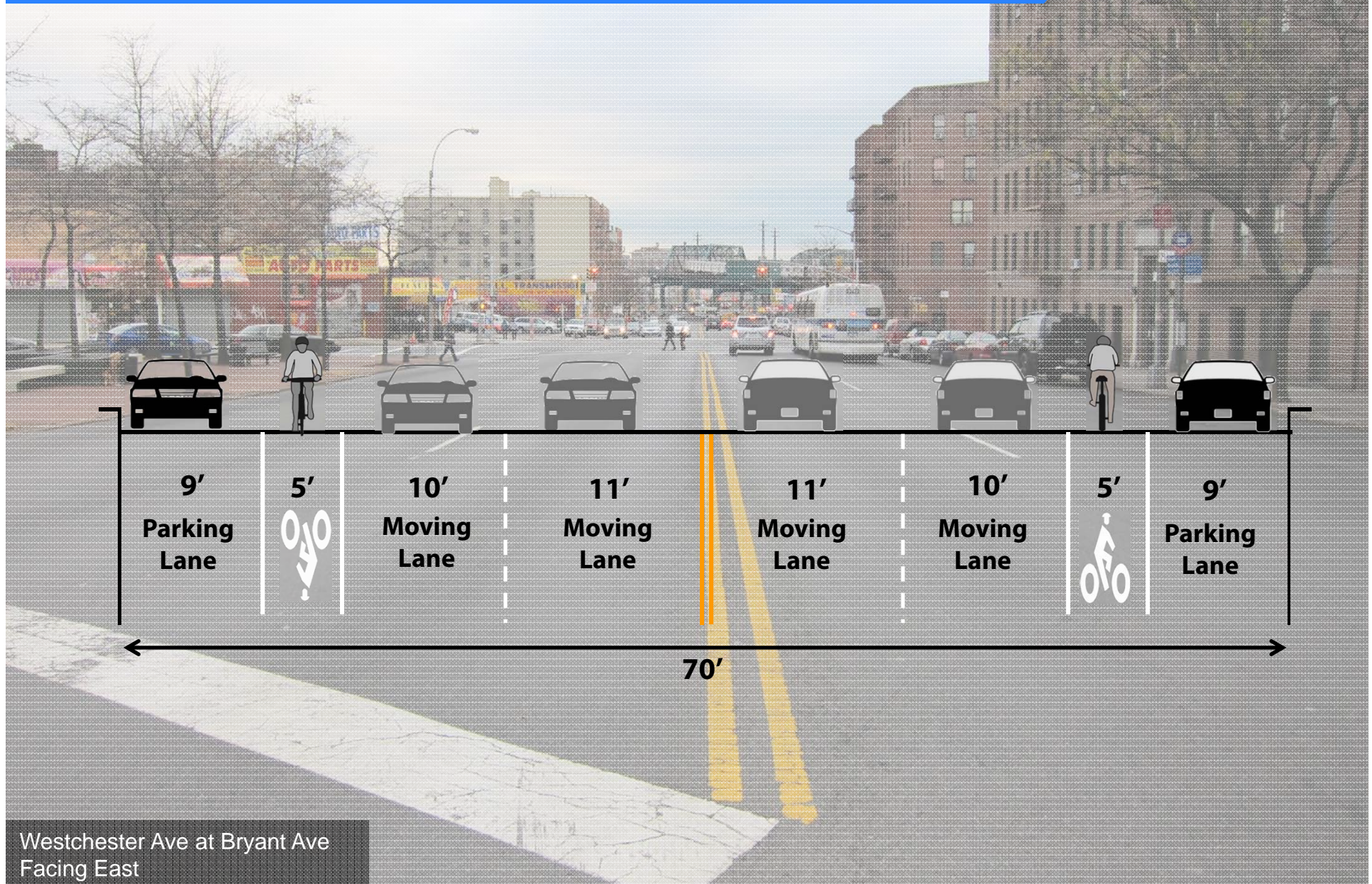
Greenway Access from the West

4 - Westchester Ave: Existing Conditions



Greenway Access from the West

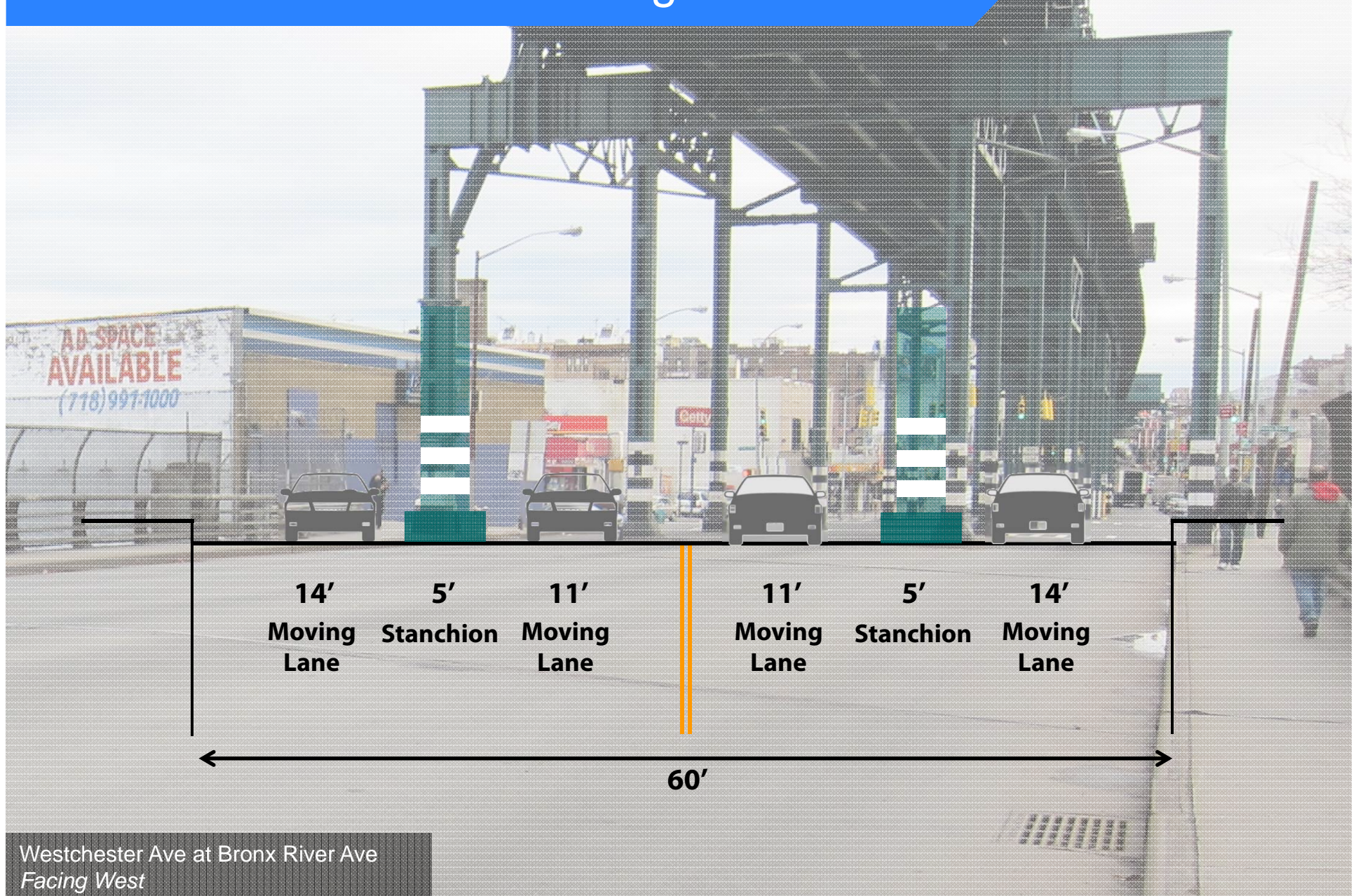
4 - Westchester Ave: Proposed Improvements



Westchester Ave at Bryant Ave
Facing East

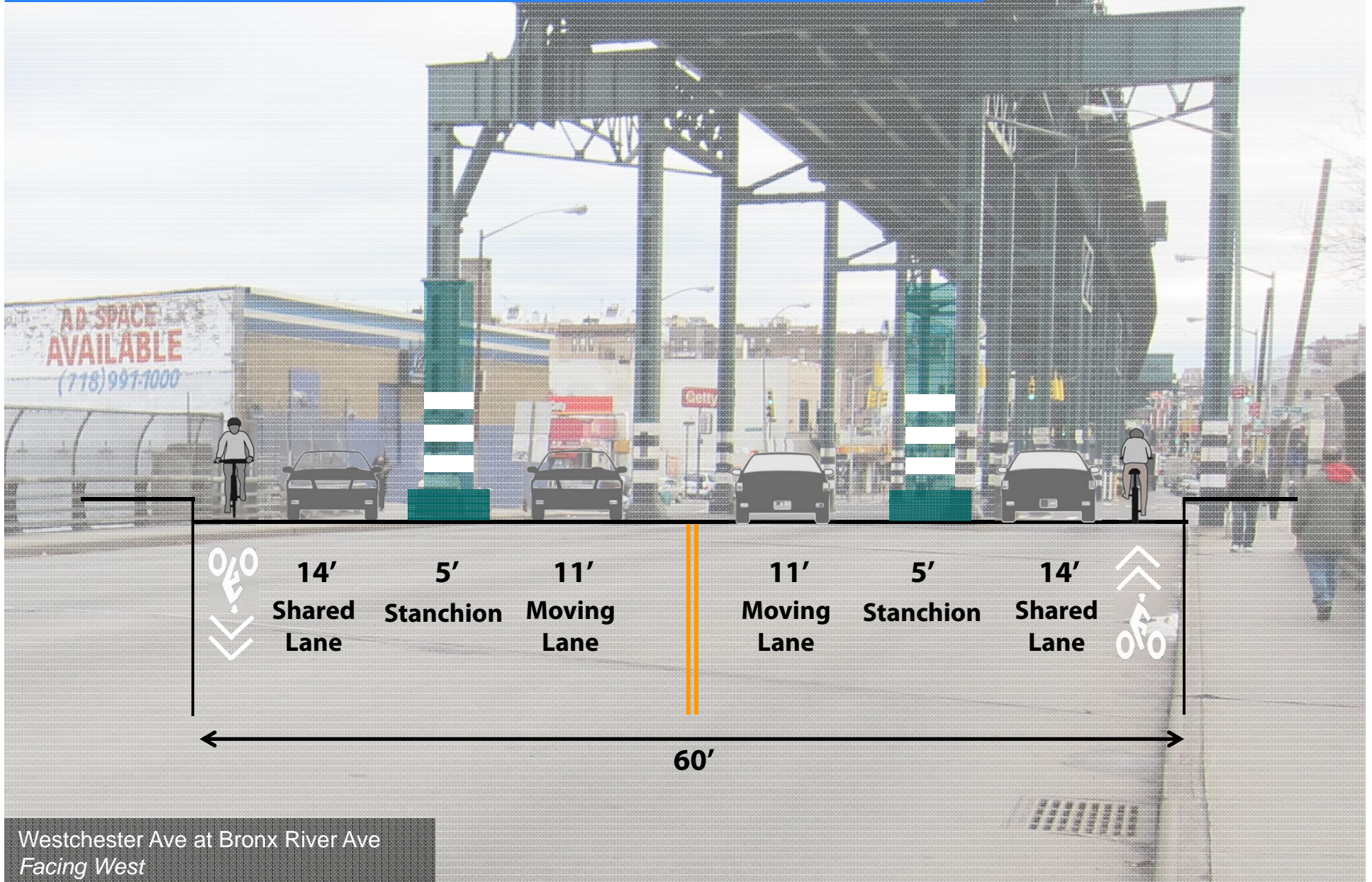
Greenway Access from the East

5 - Westchester Ave: Existing Conditions



Greenway Access from the East

5 - Westchester Ave: Existing Conditions



Greenway Access from the East

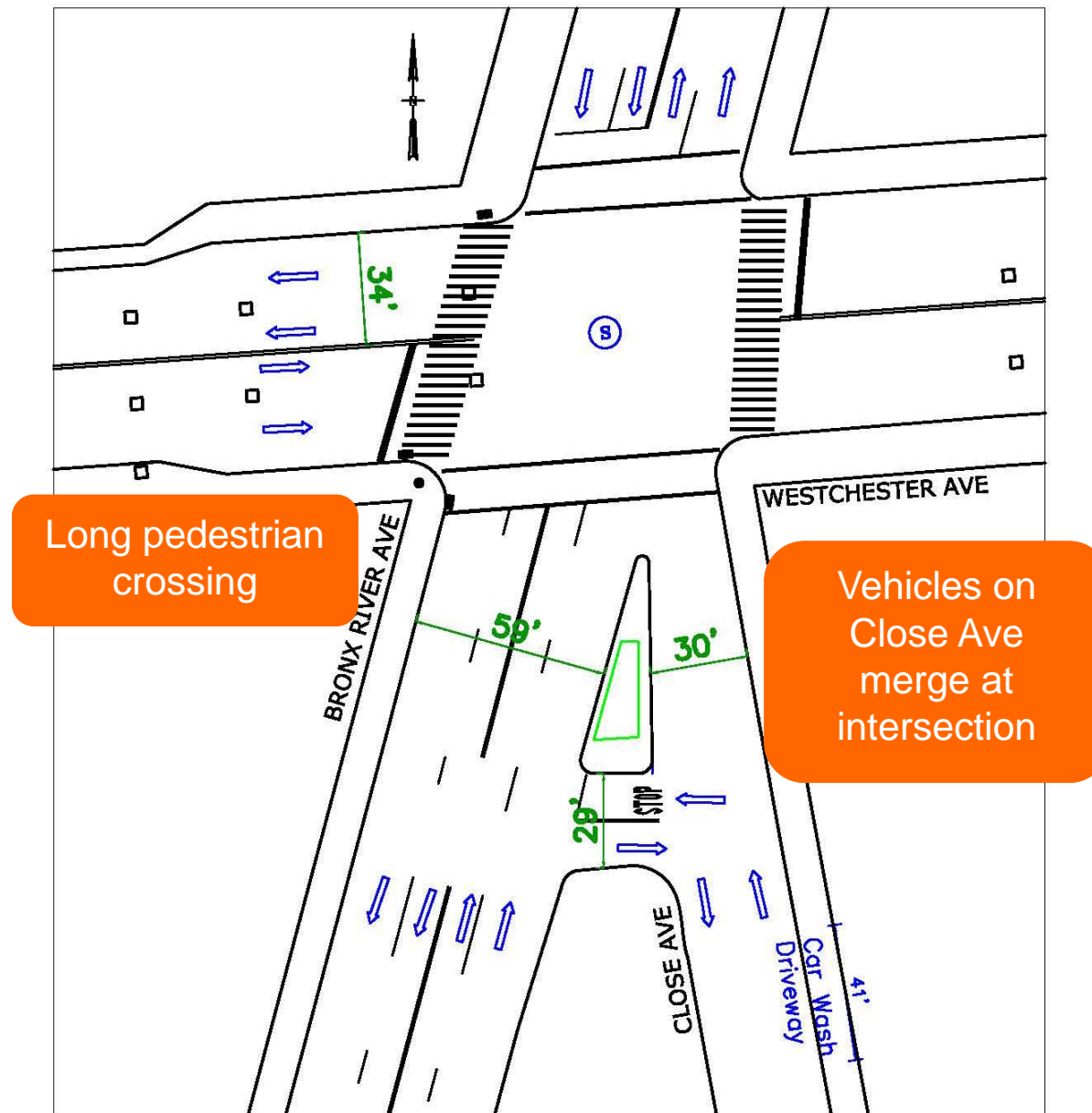
6 - Bronx River Ave Intersection – Existing Conditions



Westchester Ave at Bronx River Ave
Facing West

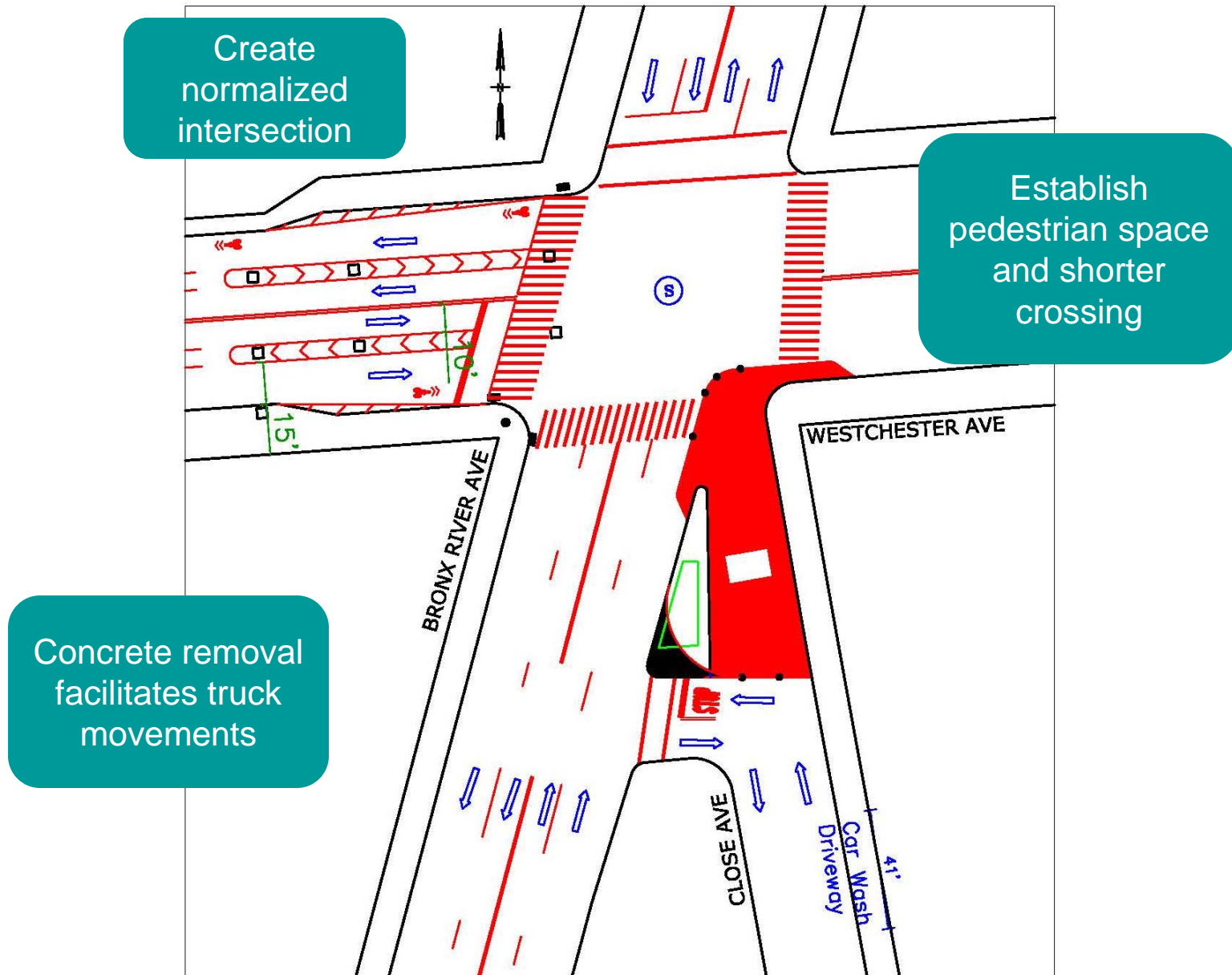
- Route to greenway from neighborhoods to the east
- 5-Leg intersection

6 - Bronx River Ave Intersection – Existing Conditions



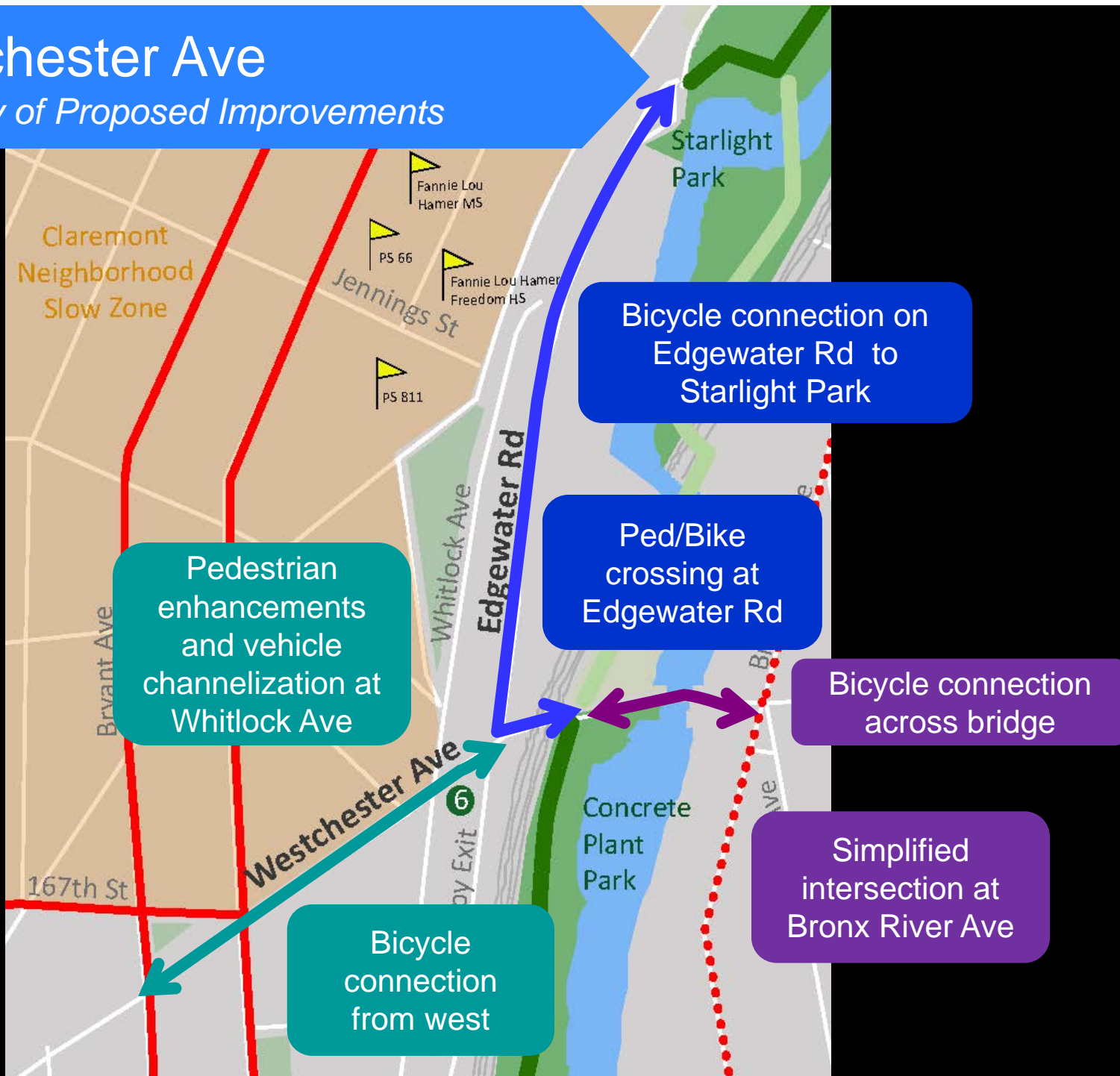
Greenway Access from the East

6 - Bronx River Ave Intersection – Proposed Improvements



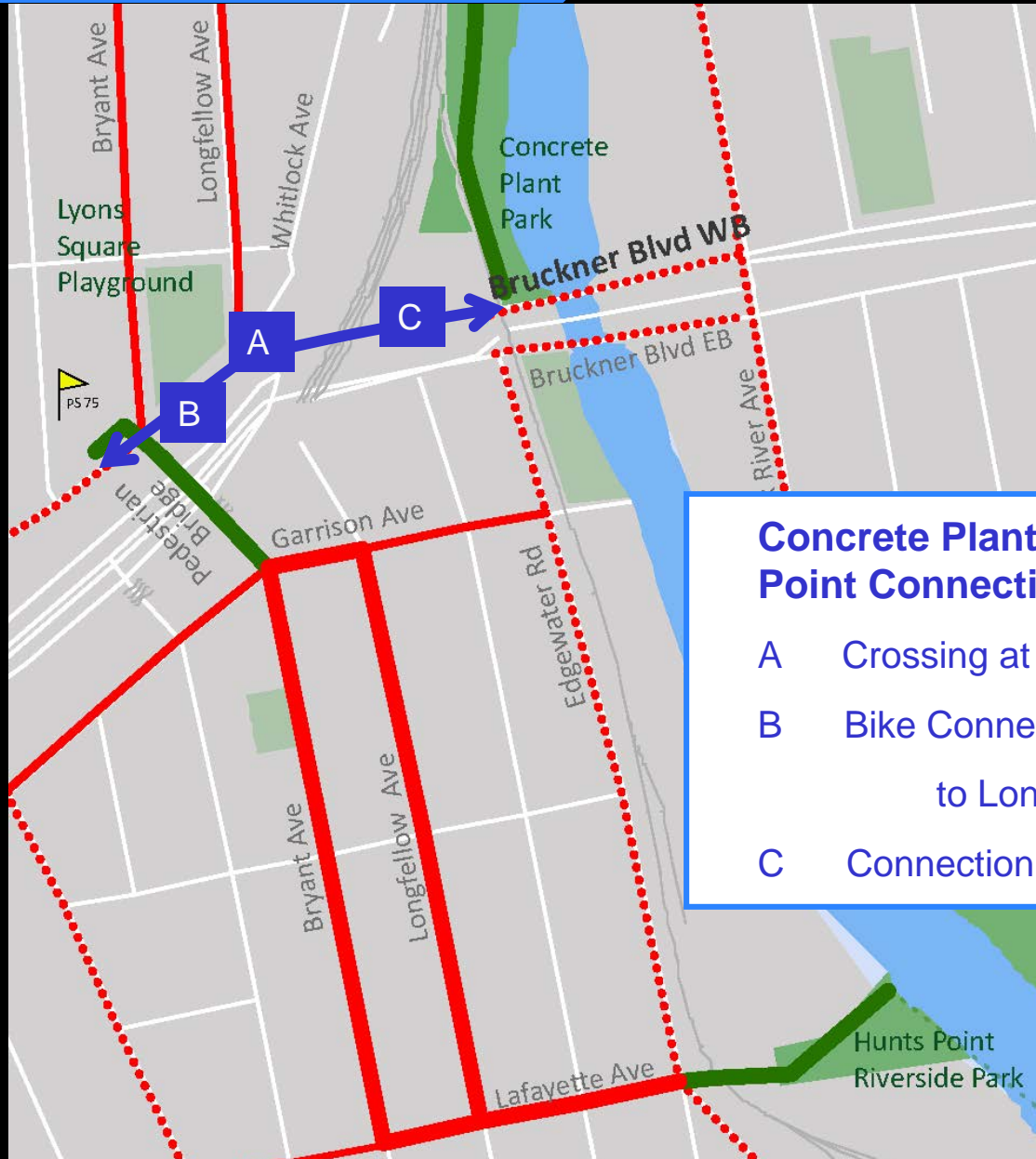
Westchester Ave

Summary of Proposed Improvements



Bruckner Blvd

Overview



Concrete Plant Park to Hunts Point Connection

- A Crossing at Whitlock Ave
- B Bike Connection from Bryant Ave to Longfellow Ave
- C Connection to park on Sidewalk

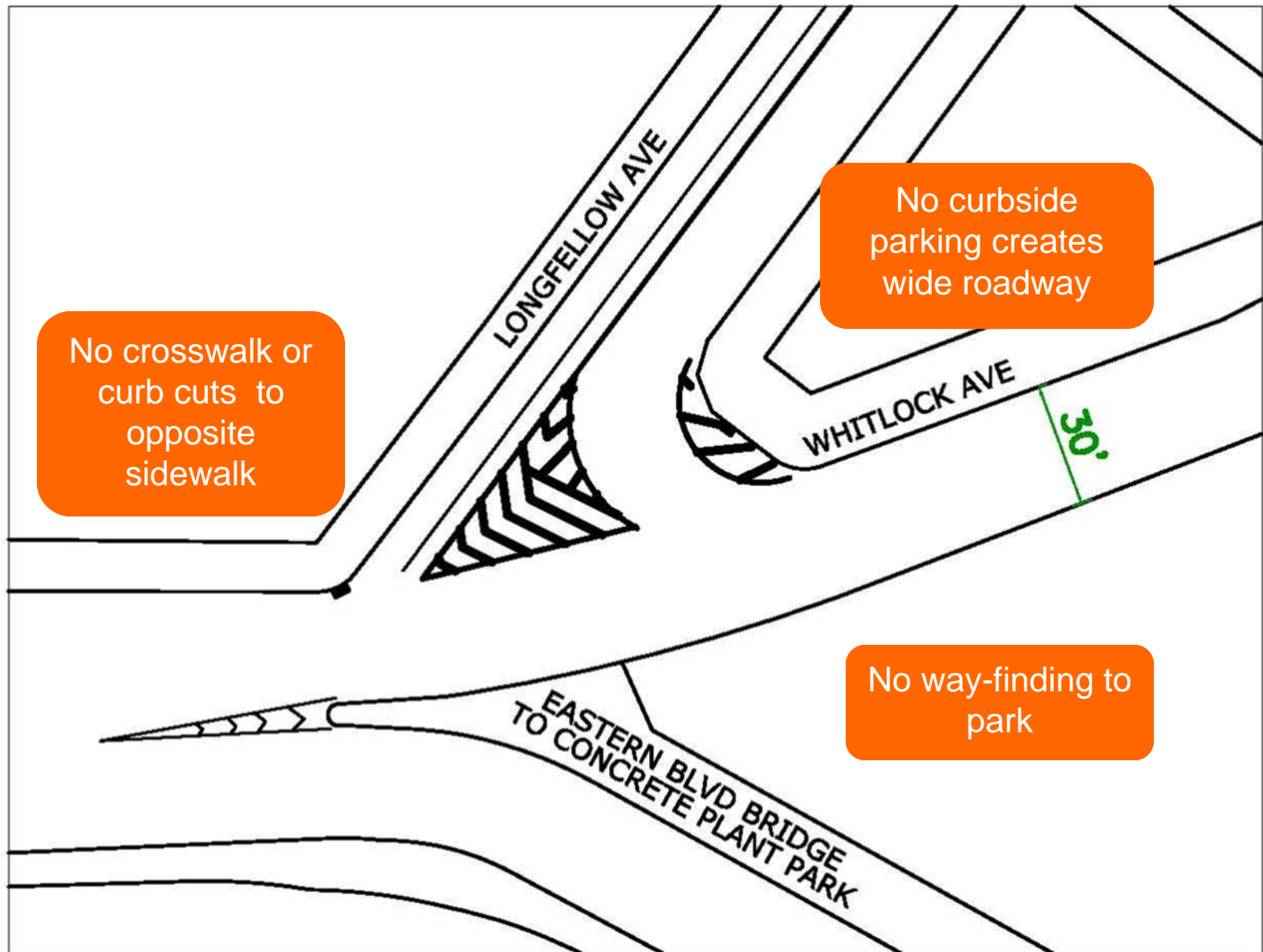
Concrete Plant Park to Hunts Point Connection - Bruckner Blvd A - Whitlock Ave Intersection: Existing Conditions



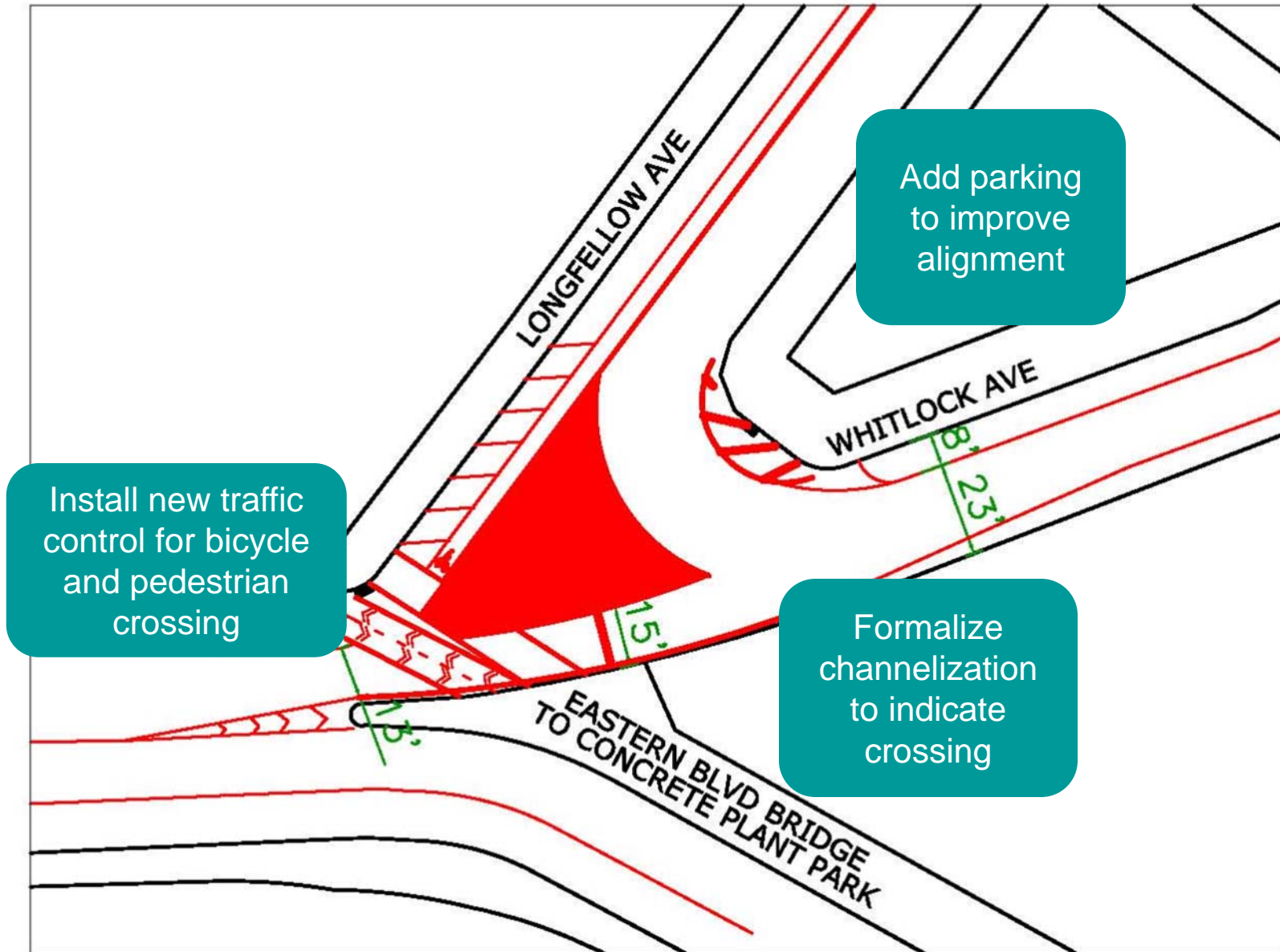
- Pedestrians and cyclists must cross Whitlock Ave to Access Concrete Plan Park

Whitlock Ave at Bruckner Blvd
Facing East

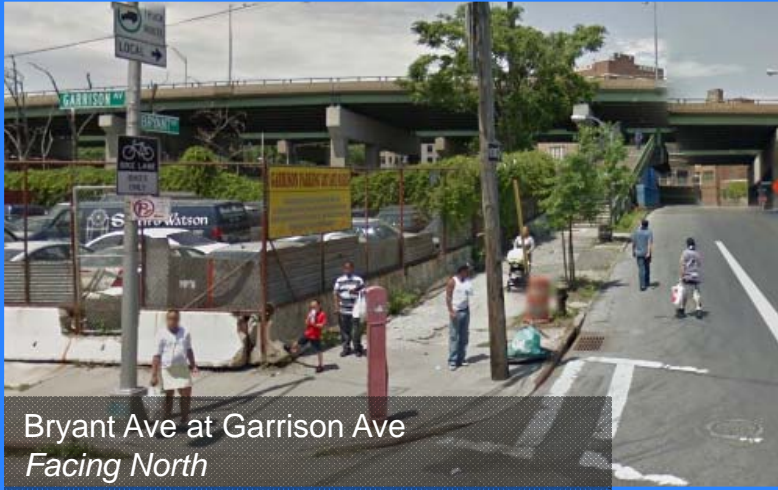
A - Whitlock Ave Intersection: Existing Conditions



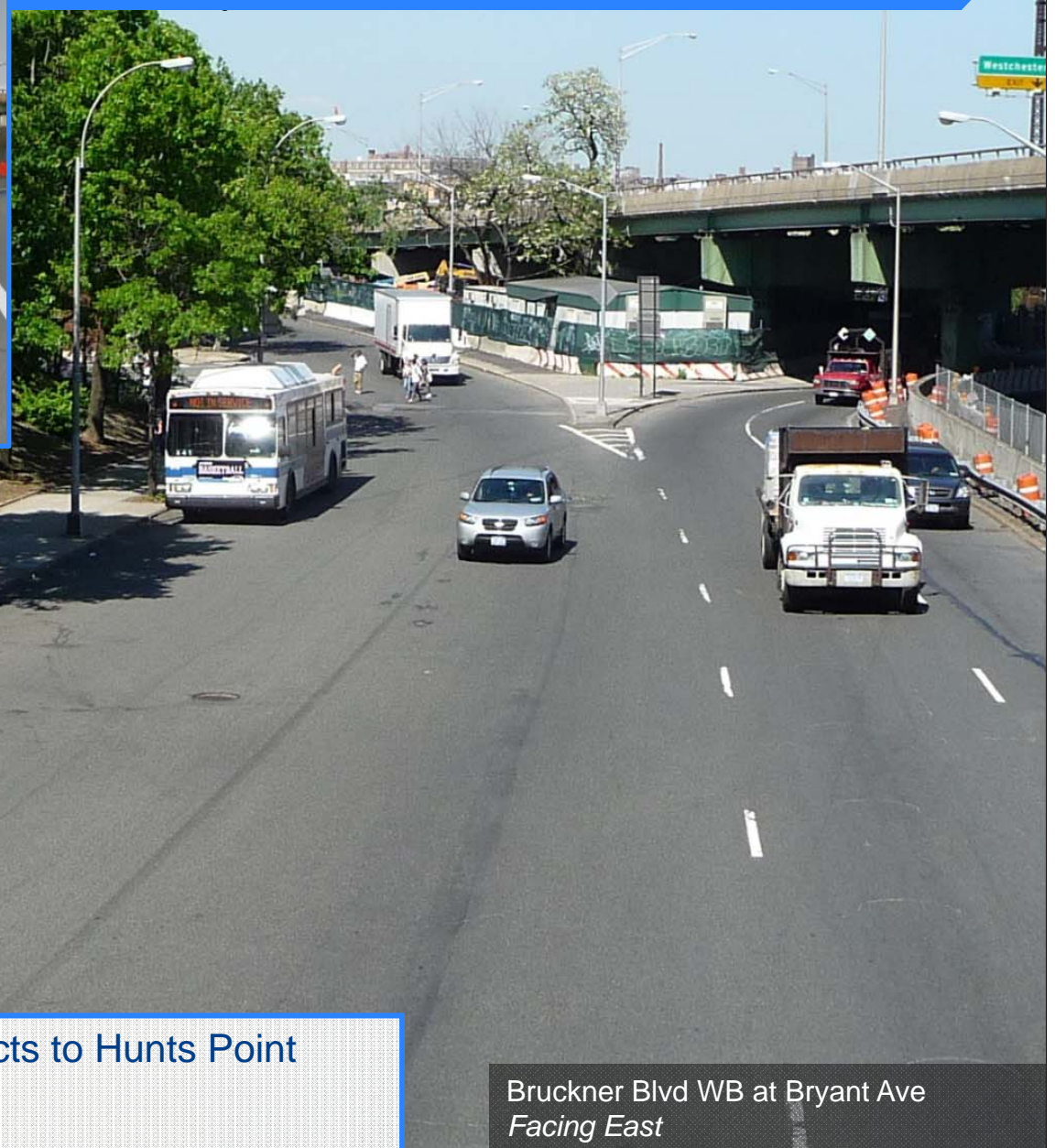
A - Whitlock Ave Intersection: Proposed Improvements



Concrete Plant Park to Hunts Point Connection - Bruckner Blvd B - Bryant Ave to Longfellow Ave: Existing Conditions



Bryant Ave at Garrison Ave
Facing North



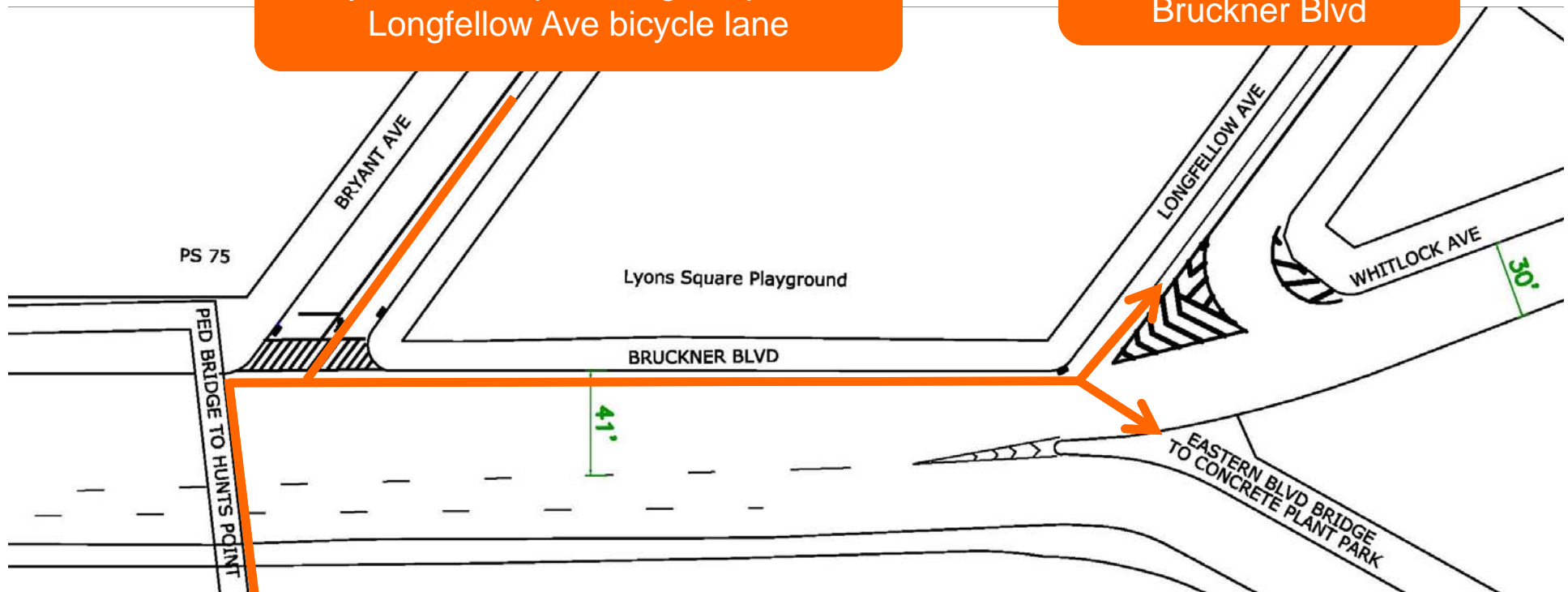
Bruckner Blvd WB at Bryant Ave
Facing East

- Bryant Ave pedestrian bridge connects to Hunts Point
- Improvements on Hunts Point side

Concrete Plant Park to Hunts Point Connection - Bruckner Blvd B - Bryant Ave to Longfellow Ave— Existing Conditions

No connection from Bryant Ave bicycle lane or ped bridge to park or Longfellow Ave bicycle lane

*40% of cyclists travel against traffic on Bruckner Blvd



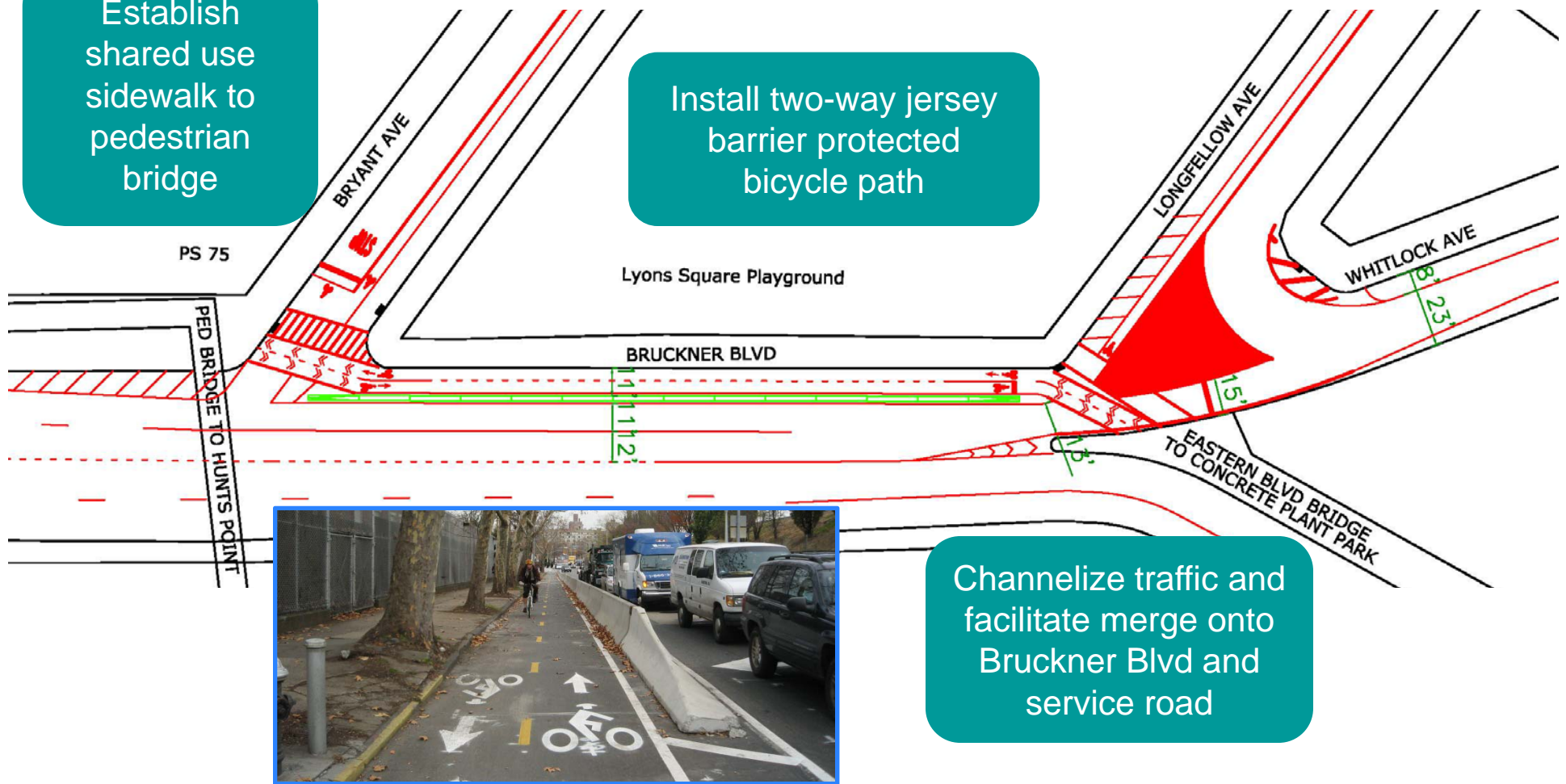
Very wide lanes encourage speeding

Concrete Plant Park to Hunts Point Connection - Bruckner Blvd

B - Bryant Ave to Longfellow Ave: Proposed Improvements

Establish shared use sidewalk to pedestrian bridge

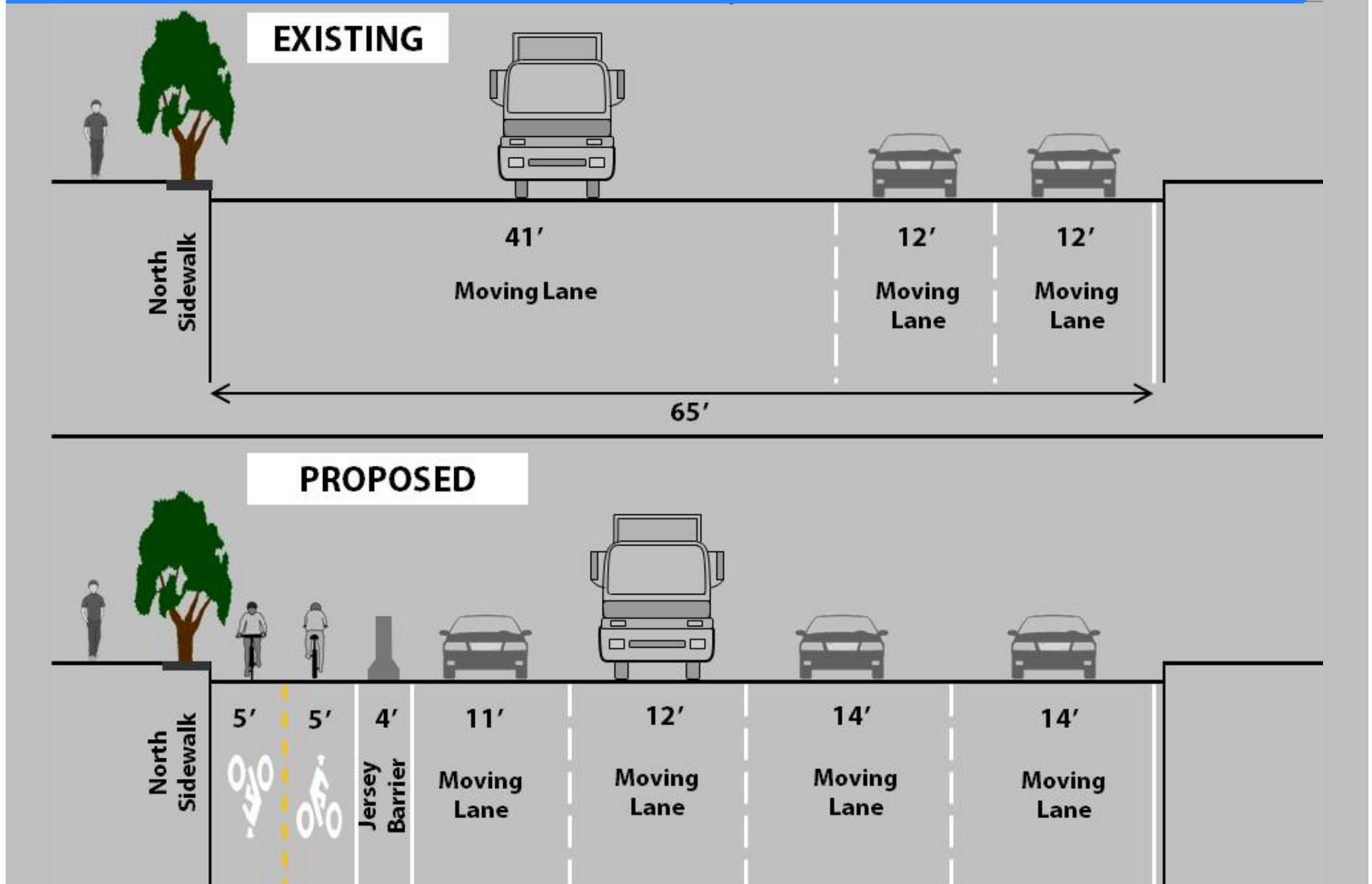
Install two-way jersey barrier protected bicycle path



Channelize traffic and facilitate merge onto Bruckner Blvd and service road

Concrete Plant Park to Hunts Point Connection - Bruckner Blvd

B - Bryant Ave to Longfellow Ave: Proposed Improvements



Concrete Plant Park to Hunts Point Connection - Bruckner Blvd C - Sidewalk to Park Entrance: Existing Conditions



Concrete Plant Park to Hunts Point Connection - Bruckner Blvd

C - Sidewalk to Park Entrance: Proposed Improvements



Cyclists Yield to
Pedestrian Shared Zone
Signs



Bike Stamps
Designate Shared
Used Sidewalk

Queens Blvd Bridge at Northern Blvd
Facing East

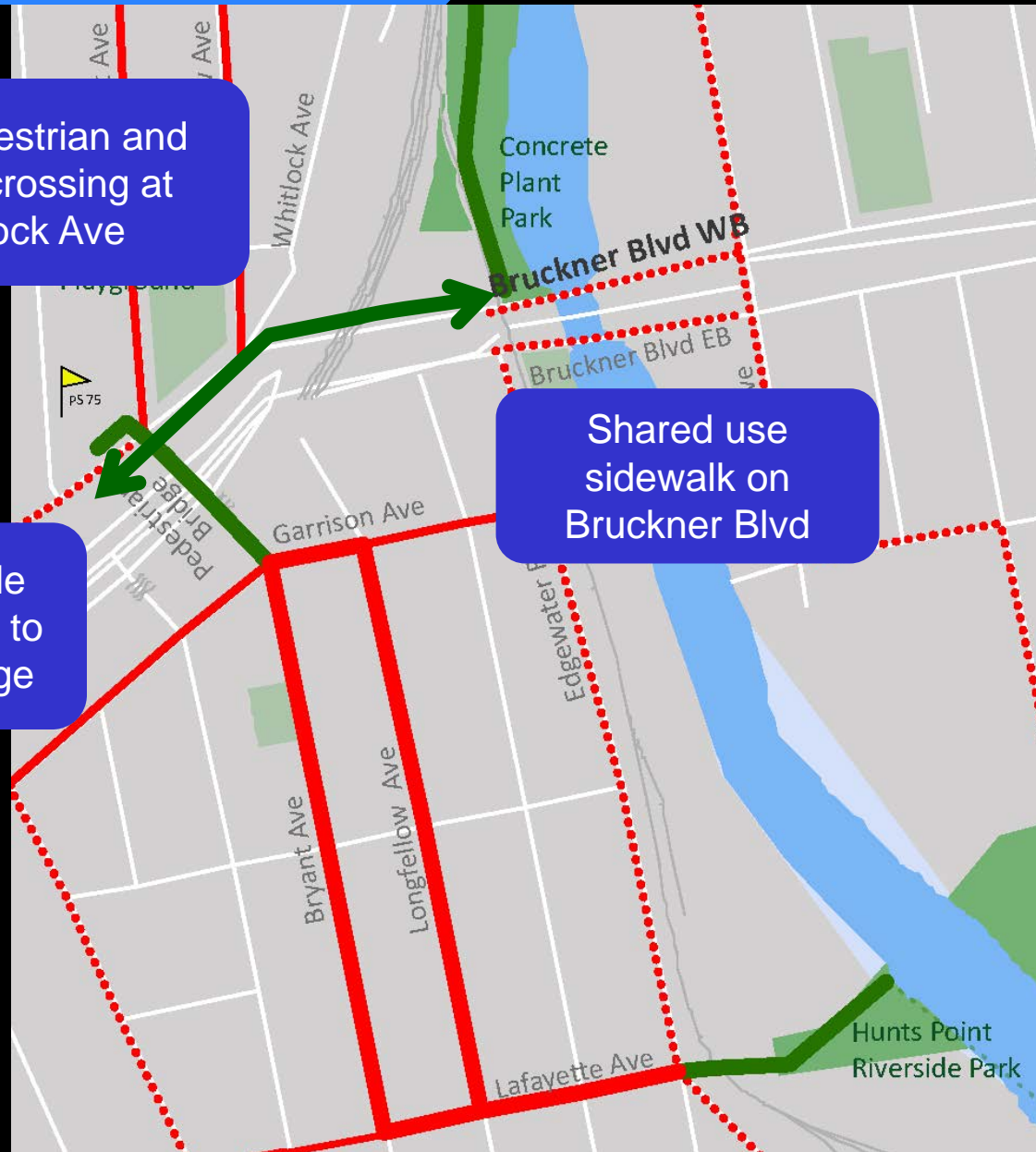
Bruckner Blvd

Summary of Proposed Improvements

New pedestrian and bicycle crossing at Whitlock Ave

Two-way bicycle path connection to pedestrian bridge

Shared use sidewalk on Bruckner Blvd



www.nyc.gov/dot

**Thank
You**