

Classon Avenue Traffic Calming

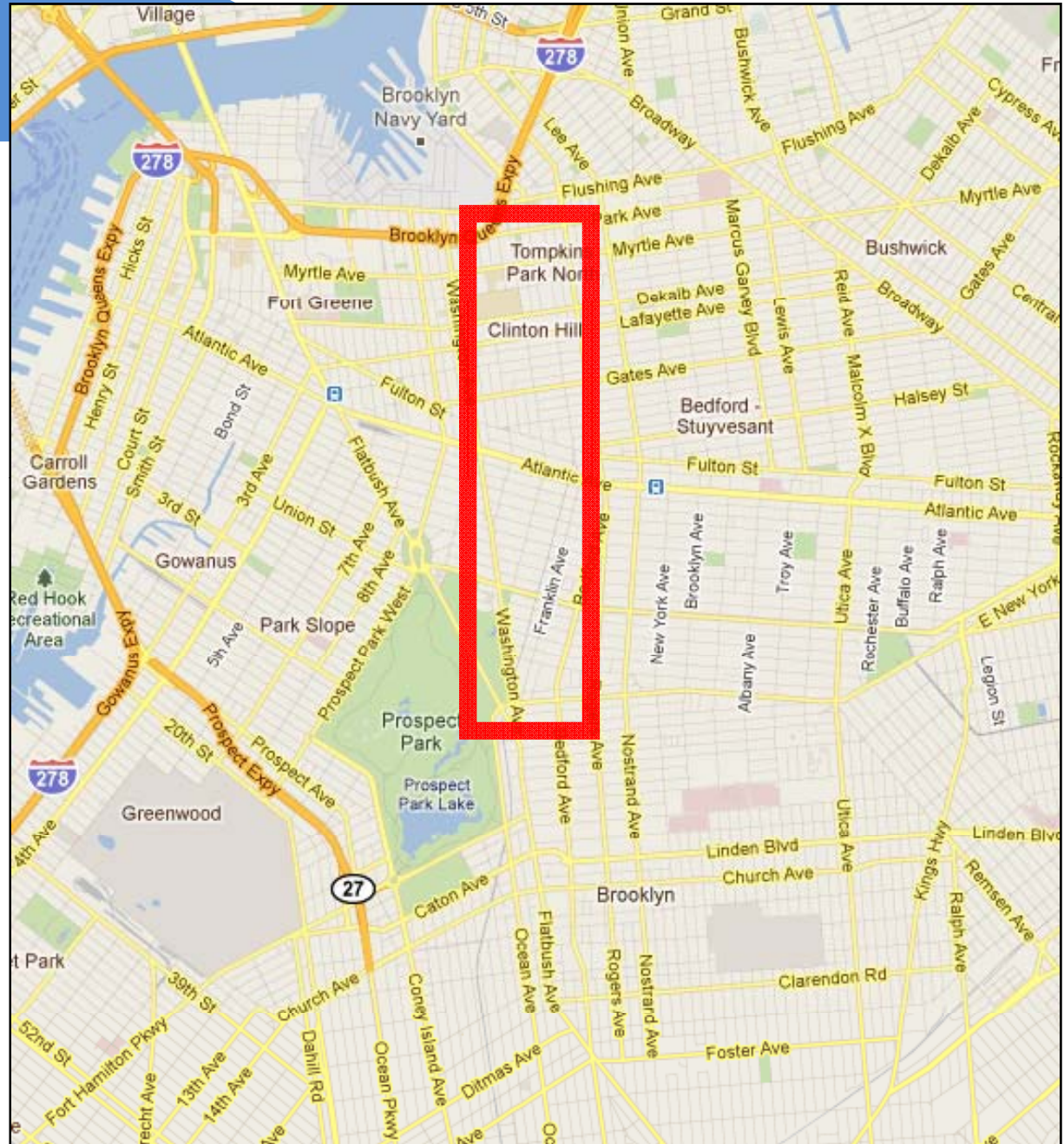


Presentation to CB3 Transportation Committee

October 11, 2011

Outline

- Project Background
- Data Collection
- Conceptual Design



Project Background

- Received request from Councilmember James for traffic calming along the corridor
- Received additional community requests for traffic speed humps, 'yield to pedestrian' signage, and other safety measures
- Documented speeding and high accident rates along the corridor
- Expected early 2012 implementation

Data Collection

Speeding

Classon Ave			
Block		Average Speed	85th %ile AVG
From	To		
Union	Eastern Pkwy	17.8	25.2
Madison	Monroe	26.3	33.0
Dean	Pacific	20.7	25.2
Willoughby	Myrtle	22.6	28.0
Sterling	Park	26.1	33.0

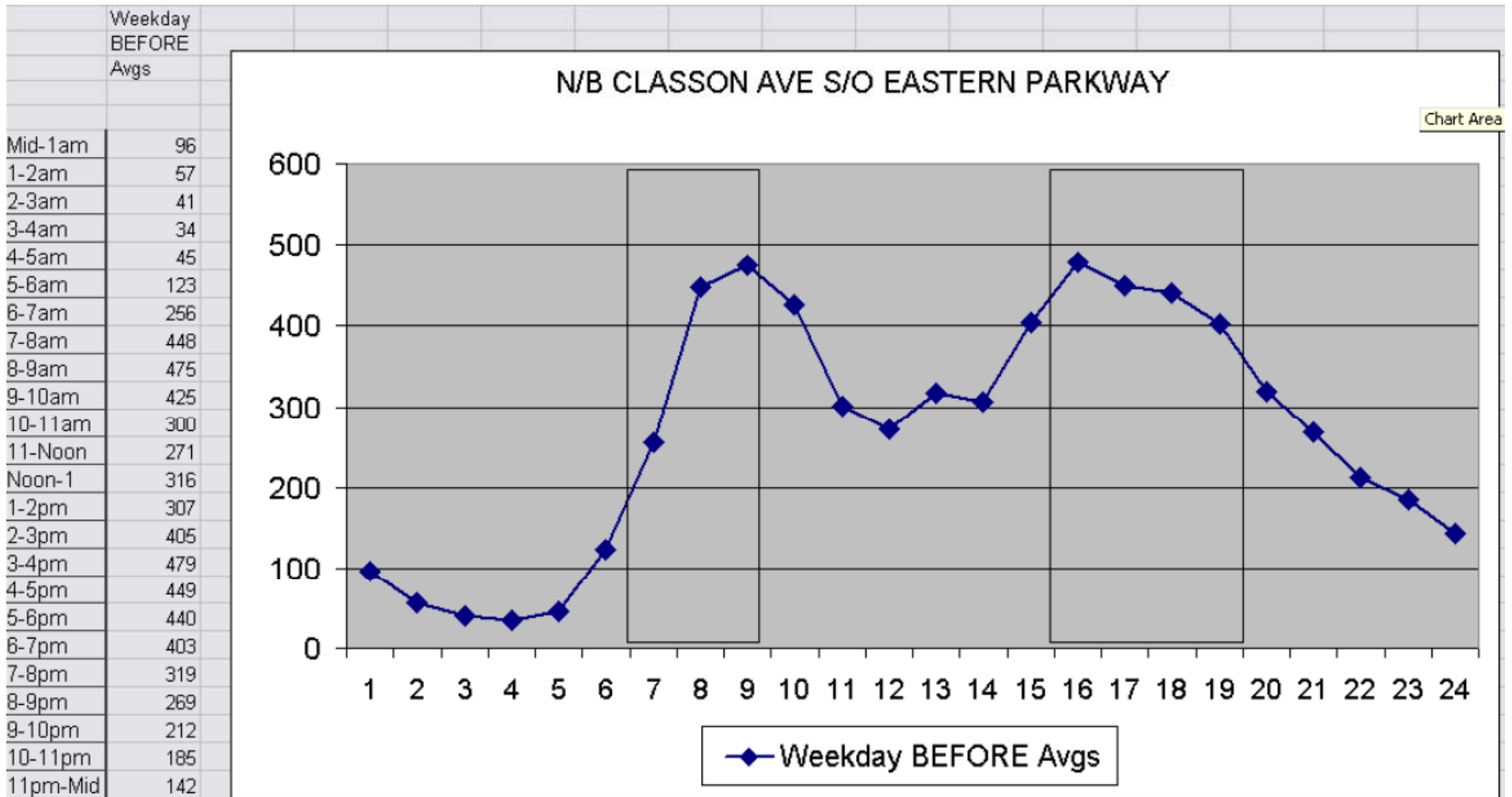
Data Collection

Accidents – 2005-2009

	Total Injuries	Average Injury/Year	Average Injury/Mile/Year	Severity Percentile of Boro Corridors	Serious Injury/Mile/Year
Pedestrian	44	8.8	4.3	73%	0.4
Bicyclist	25	5	2.4	N/A	0.1
Motor Vehicle Occupant	288	57.6	28.5	80%	0.8
Total	357	71.4	35.3	76%	0.7

Data Collection

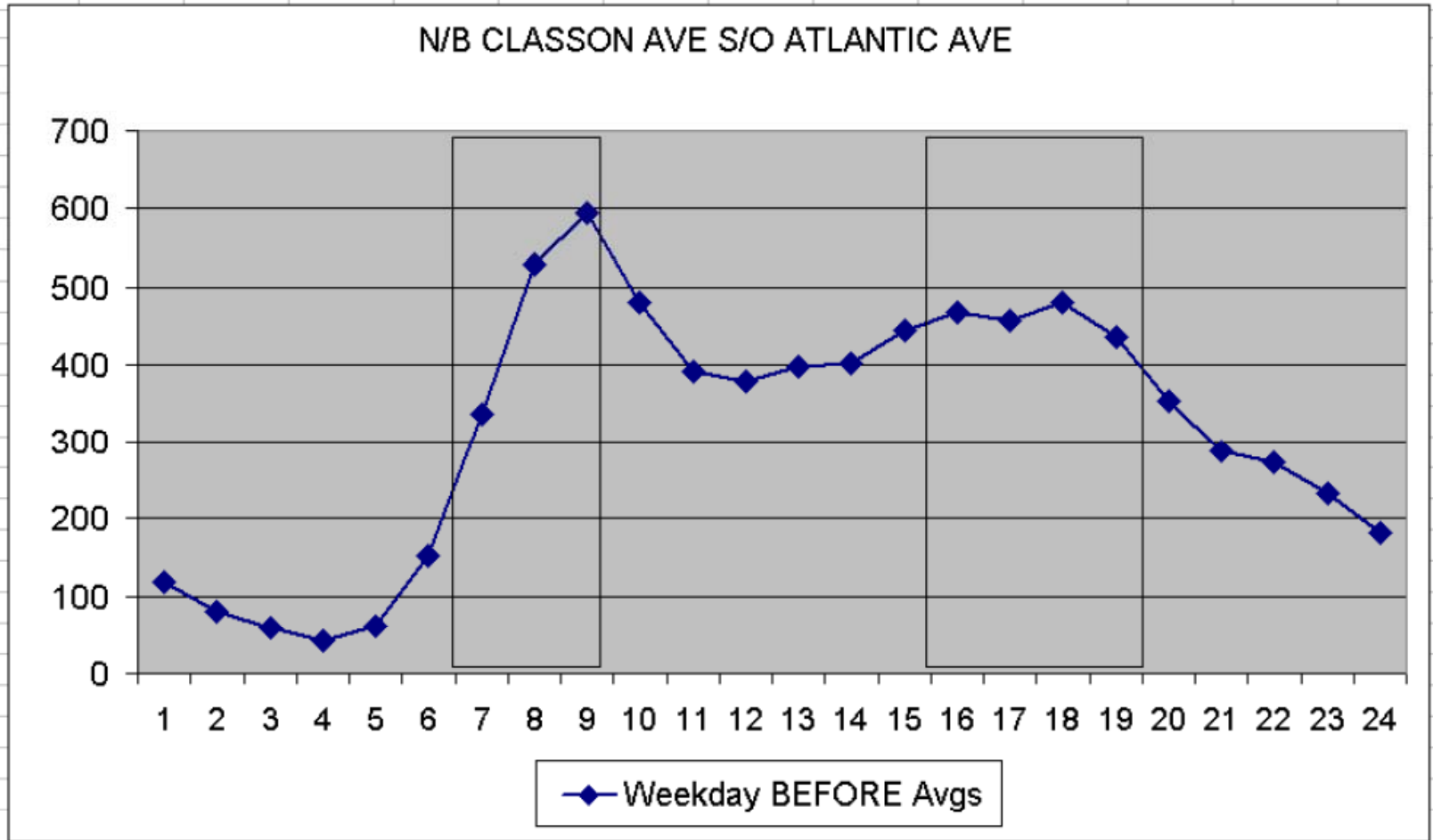
Volumes



Data Collection

Volumes

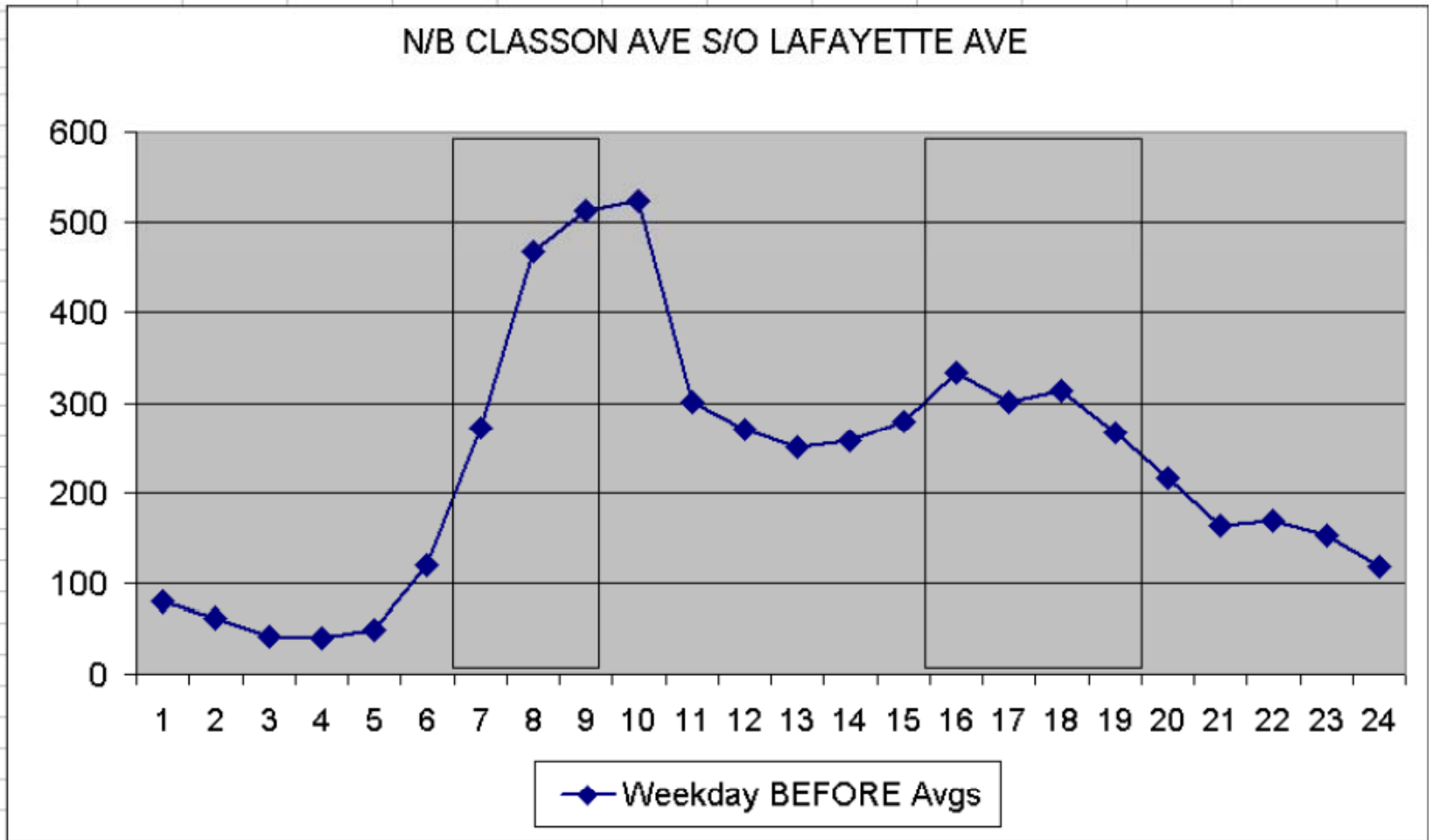
	Weekday BEFORE Avg
Mid-1am	119
1-2am	80
2-3am	59
3-4am	42
4-5am	62
5-6am	153
6-7am	336
7-8am	529
8-9am	595
9-10am	481
10-11am	391
11-Noon	378
Noon-1	398
1-2pm	402
2-3pm	444
3-4pm	467
4-5pm	457
5-6pm	481
6-7pm	435
7-8pm	354
8-9pm	288
9-10pm	272
10-11pm	232
11pm-Mid	182



Data Collection

Volumes

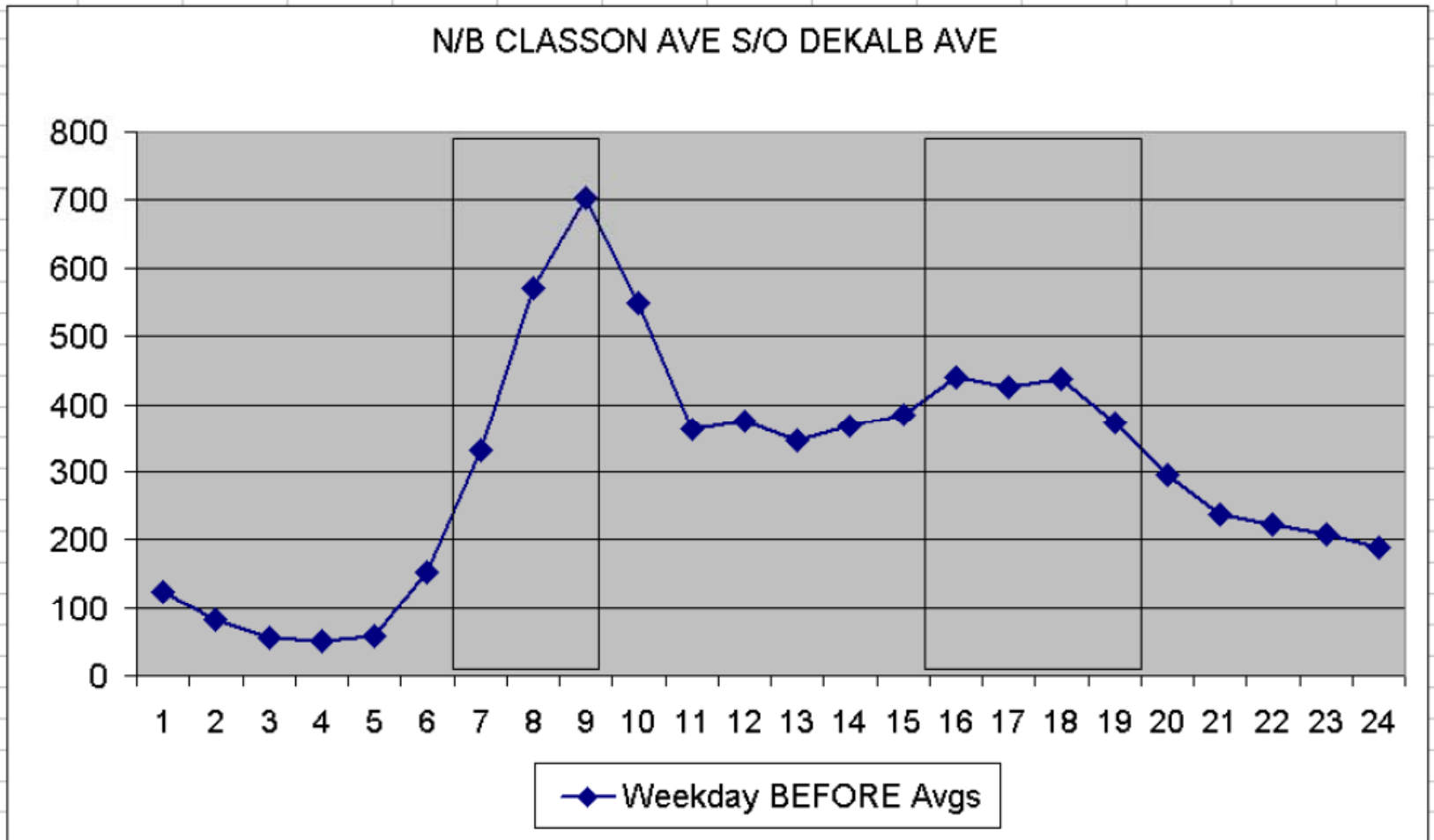
	Weekday BEFORE Avg
Mid-1 am	79
1-2am	62
2-3am	42
3-4am	39
4-5am	49
5-6am	119
6-7am	272
7-8am	468
8-9am	514
9-10am	524
10-11am	301
11-Noon	270
Noon-1	251
1-2pm	258
2-3pm	280
3-4pm	334
4-5pm	300
5-6pm	314
6-7pm	267
7-8pm	216
8-9pm	163
9-10pm	168
10-11pm	152
11pm-Mid	119



Data Collection

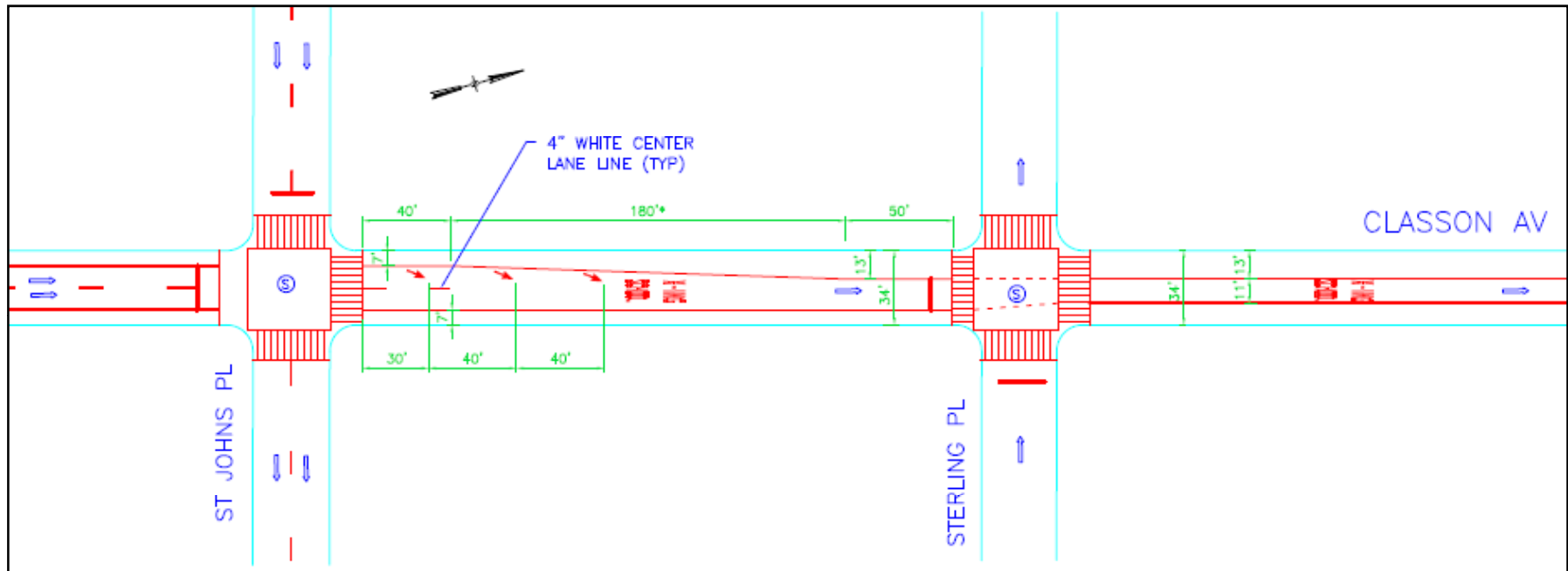
Volumes

	Weekday BEFORE Avg
Mid-1am	124
1-2am	82
2-3am	56
3-4am	50
4-5am	59
5-6am	152
6-7am	330
7-8am	570
8-9am	704
9-10am	550
10-11am	361
11-Noon	374
Noon-1	346
1-2pm	367
2-3pm	384
3-4pm	439
4-5pm	425
5-6pm	437
6-7pm	372
7-8pm	296
8-9pm	236
9-10pm	223
10-11pm	209
11pm-Mid	188



Proposed Design

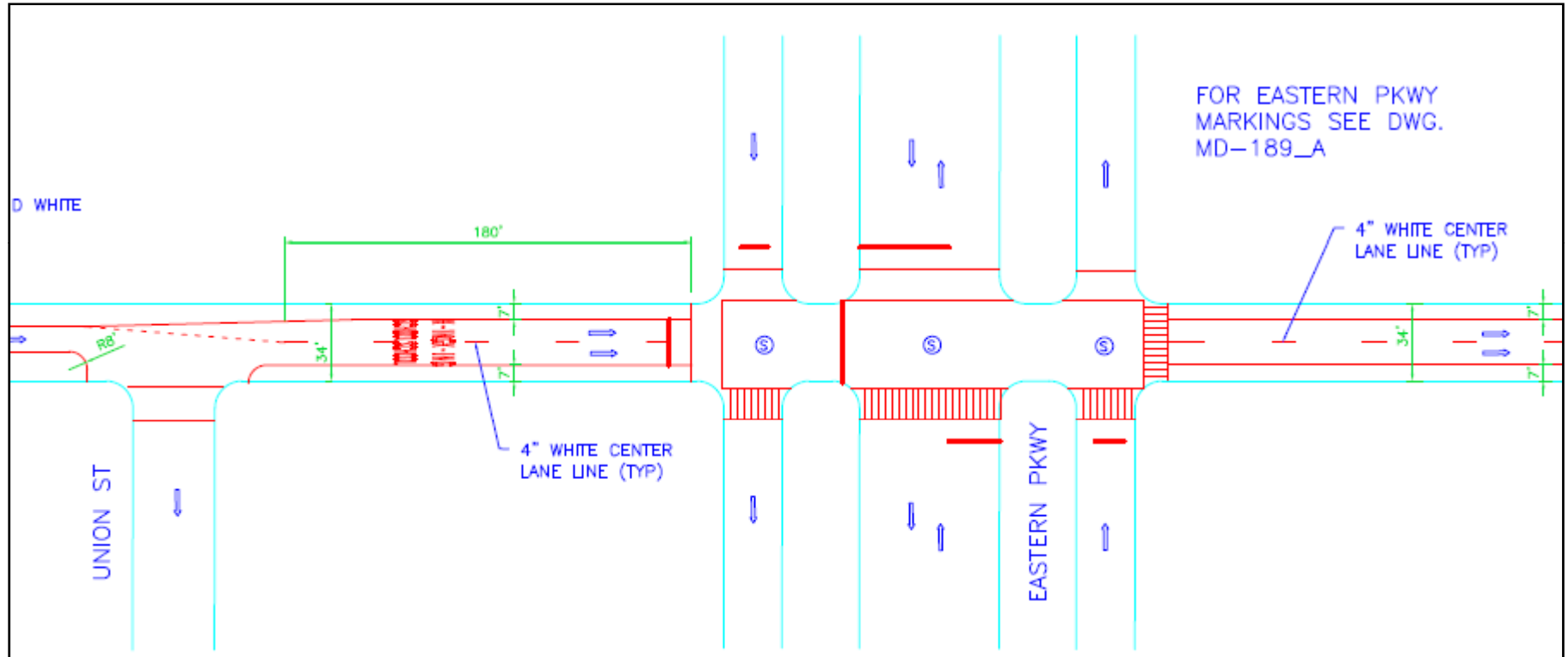
General Alignment



- Reduction from 2 lanes to 1, with additional lane retained where volume and turning movements warrant
- Typical one lane configuration: one 11' travel lane with two wide (10'-13') parking lanes
- Typical two lane configuration: two 10' travel lanes with two 7' parking lanes
- Nearly all existing parking along corridor is retained; 11 spots removed between Atlantic Avenue and Pacific Street

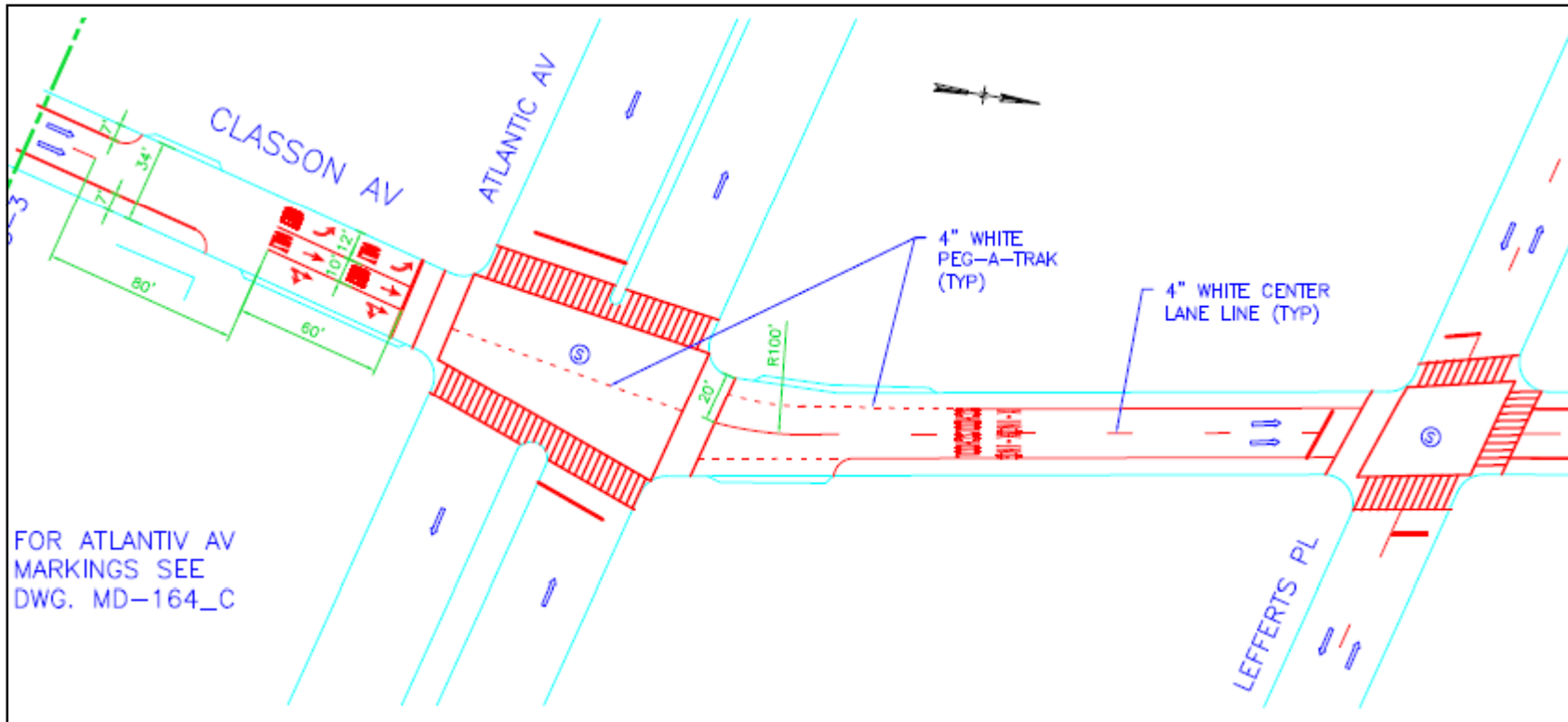
Proposed Design

Eastern Parkway



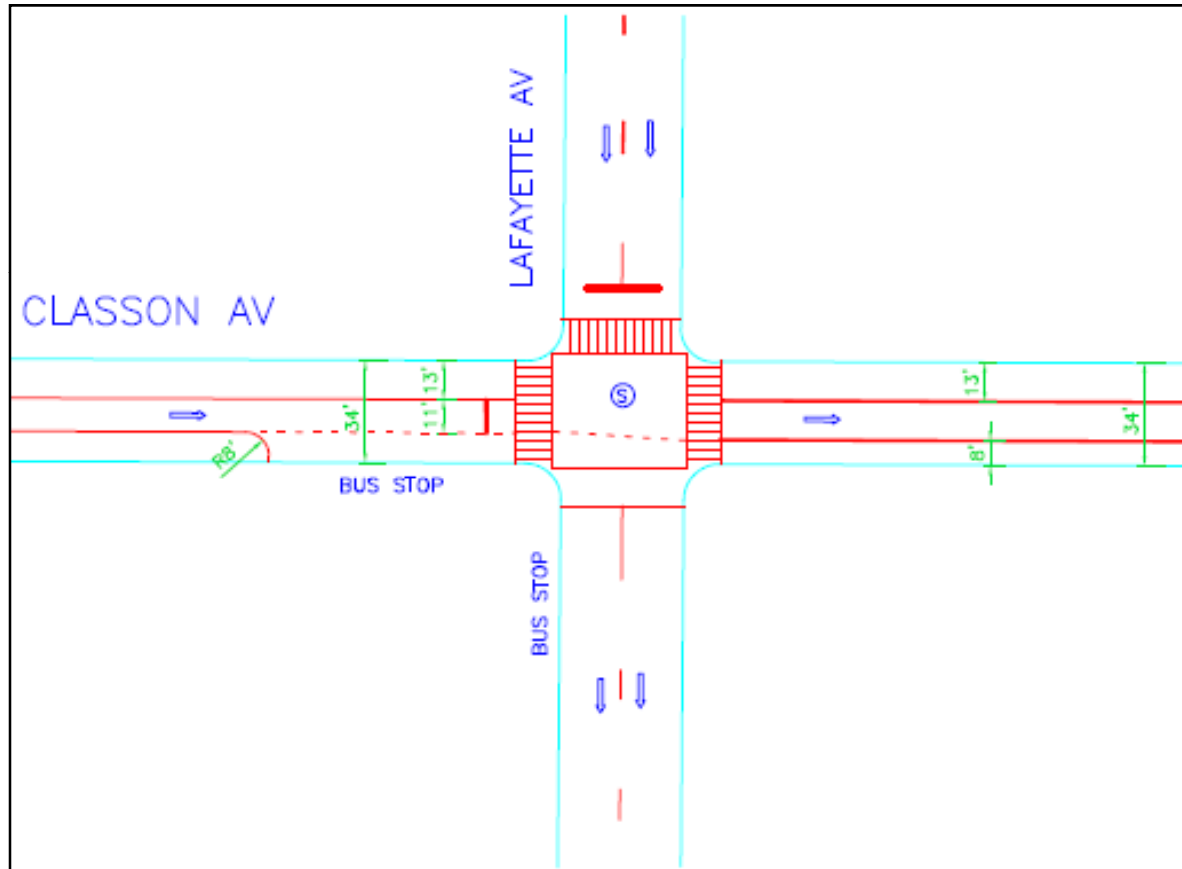
Proposed Design

Atlantic Avenue



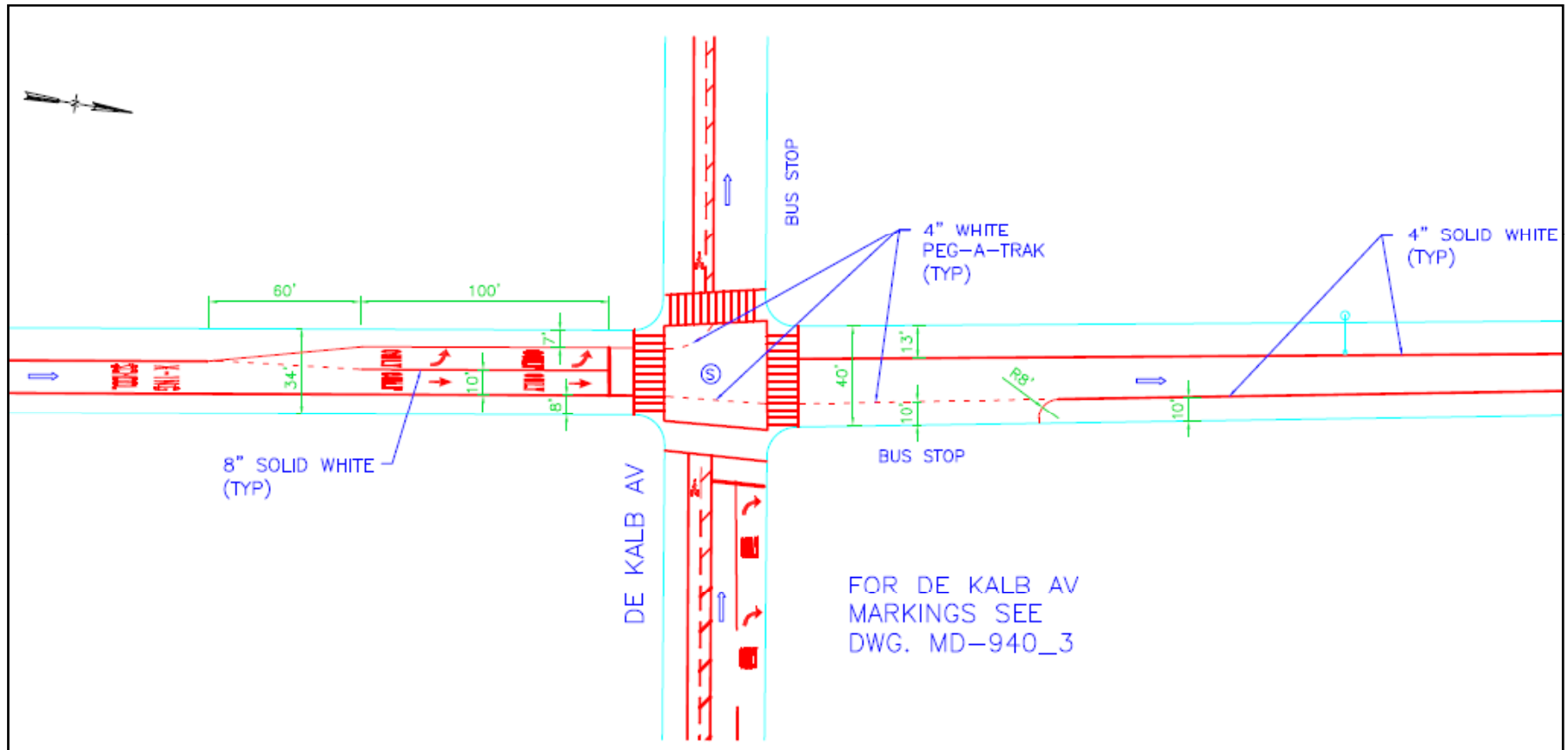
Proposed Design

Lafayette Avenue



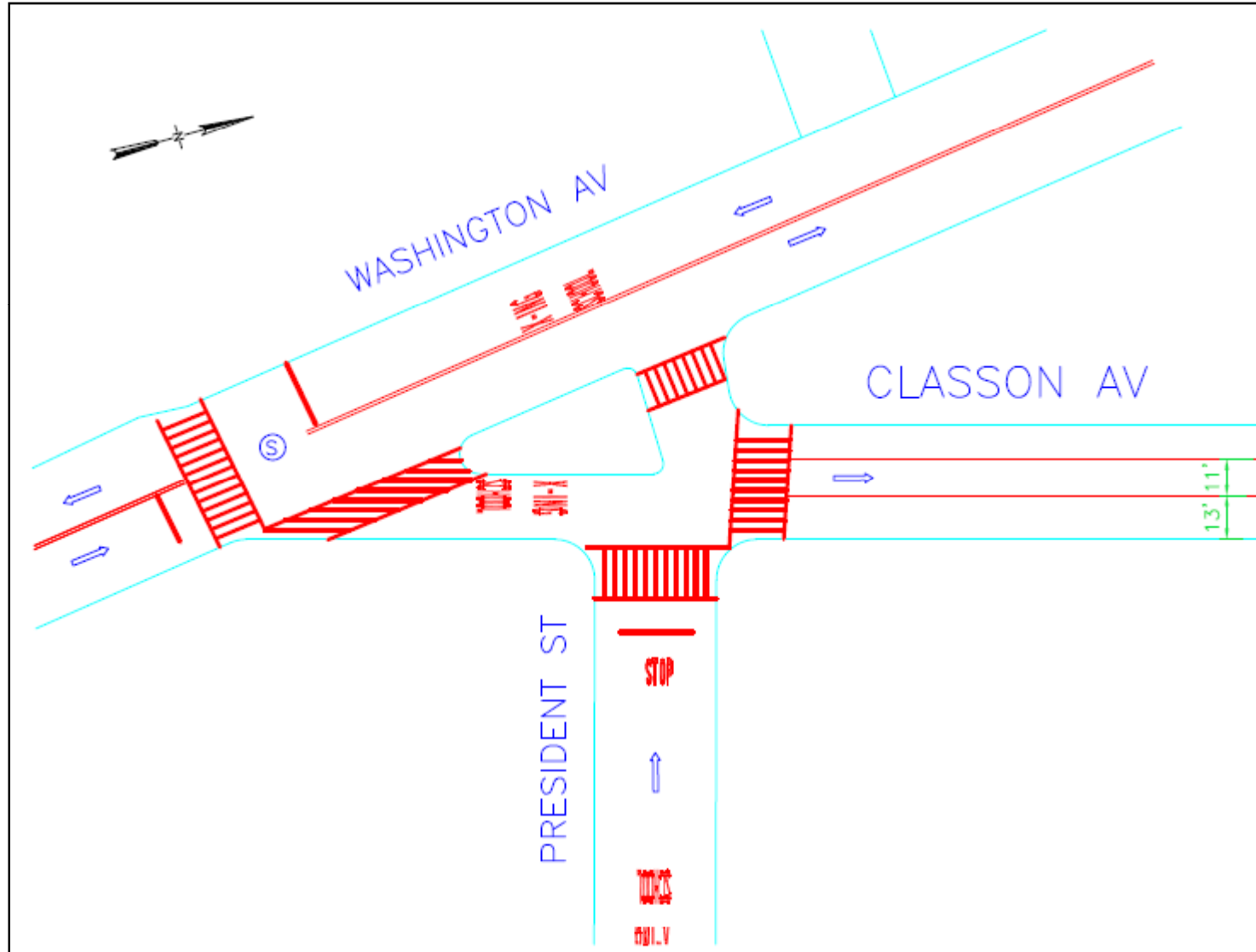
Proposed Design

DeKalb Avenue



Proposed Design

Washington Avenue



Classon Avenue Traffic Calming



*Questions &
Comments?*

