

# Old Fulton Street

Summer  
2011



Commissioner Janette Sadik-Khan, New York City Department of Transportation  
Presented to Community Board 2, June 21, 2011 by the Pedestrian Projects Group



# Locator Map

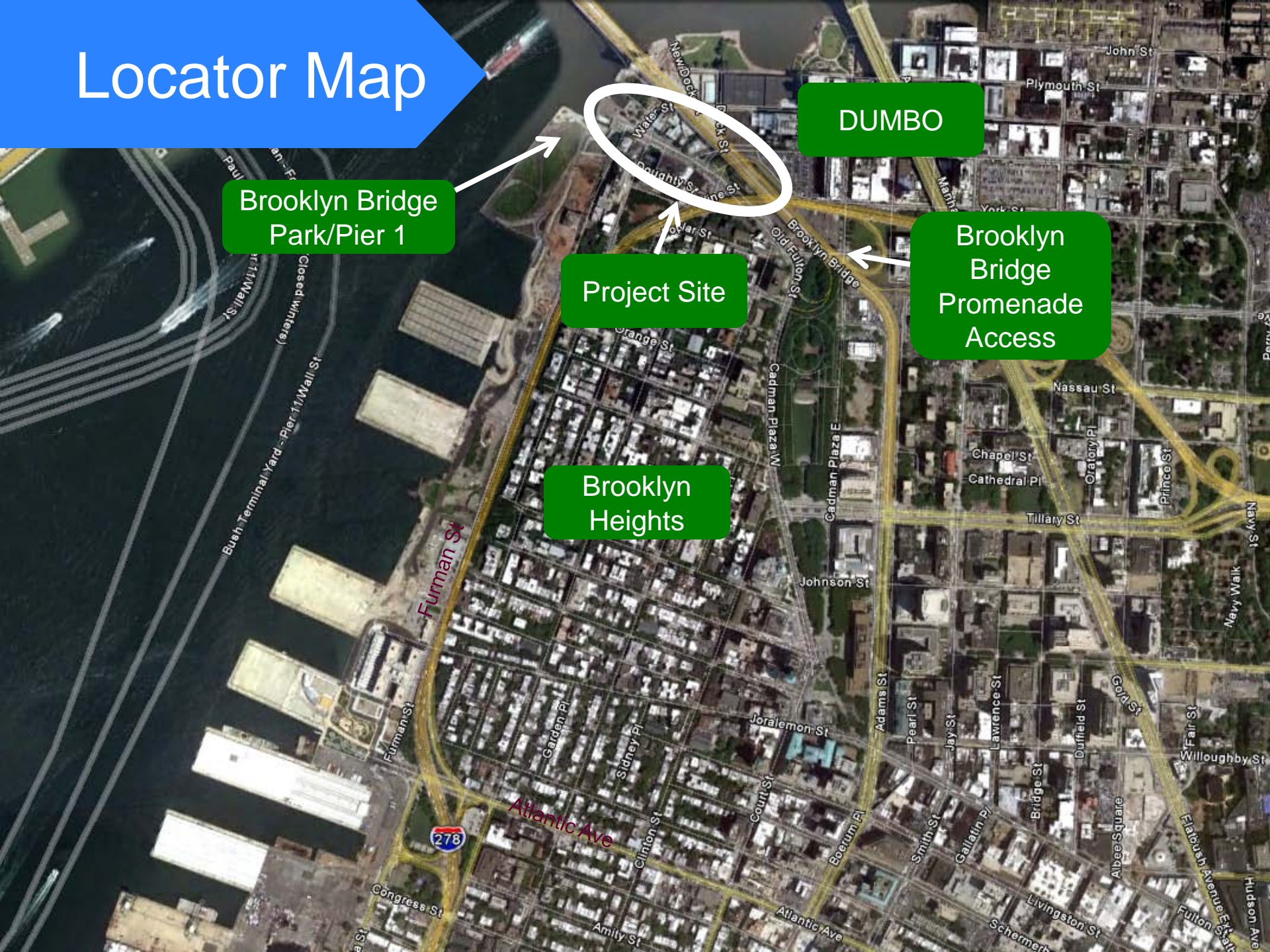
Brooklyn Bridge  
Park/Pier 1

Project Site

DUMBO

Brooklyn  
Bridge  
Promenade  
Access

Brooklyn  
Heights





# Existing Conditions

An aerial photograph of a city street intersection. A multi-lane highway runs diagonally from the top right to the bottom right. A street labeled 'Old Fulton St' runs horizontally across the middle. Another street labeled 'Front St' runs horizontally at the bottom right. The area is densely packed with buildings, parking lots, and some greenery. Several orange callout boxes are overlaid on the image, providing information about existing conditions and community requests.

Gateway to  
Brooklyn Bridge  
Park/Pier 1

Community requested  
improvements and  
developed vision plan

**Bicycle Issues:**  
Shared markings  
only

**Vehicle Issues:**

- Poor sight lines
- Wide roadbed
- Bus U-turn  
requires confusing  
signal phasing
- Illegal parking

**Pedestrian Issues:**

- Desire-line not  
accommodated
- Long crossings
- Narrow sidewalks

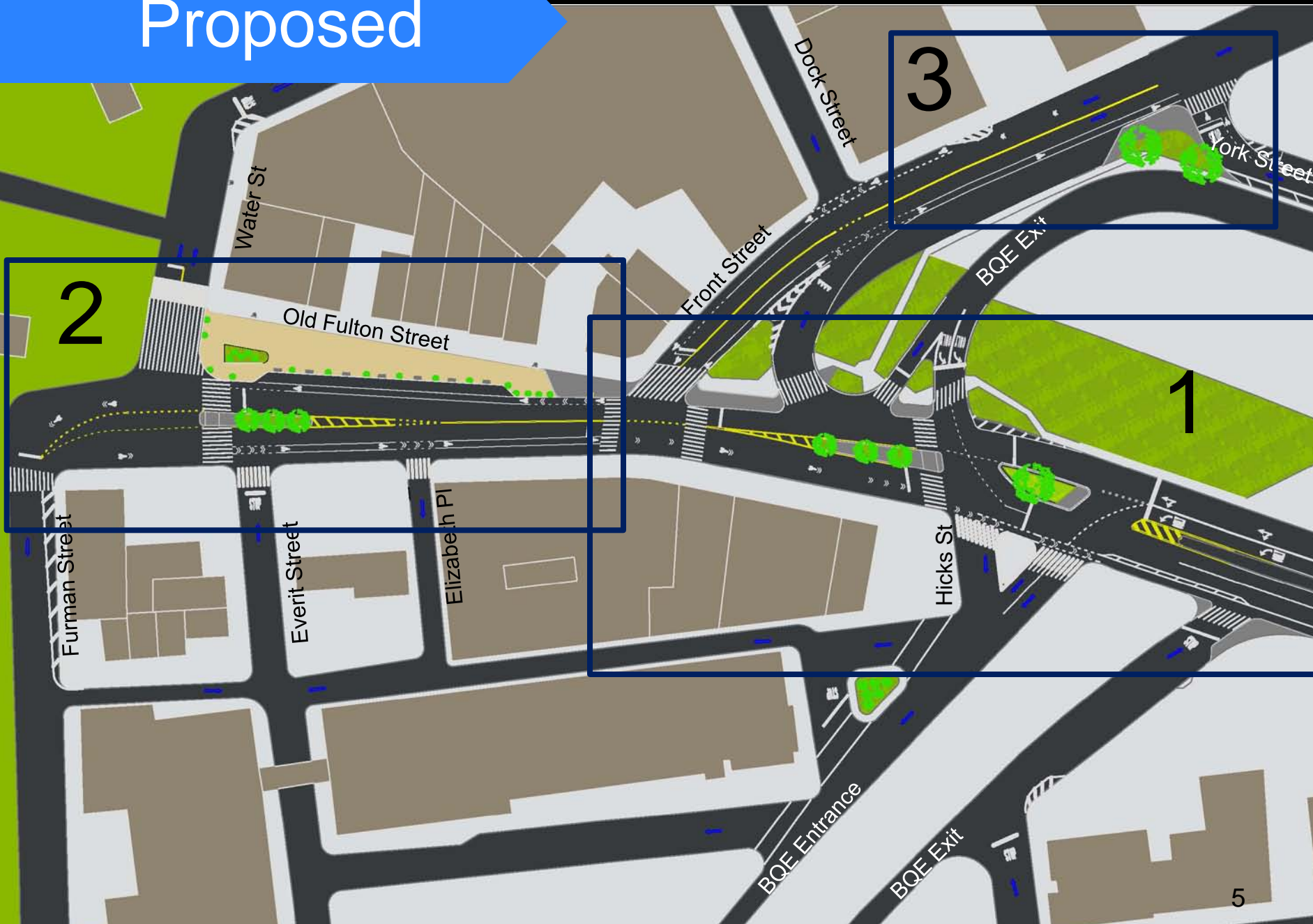


# DOT's 2011 Operational Toolkit

- Pavement Markings
- Signal Timing
- New Signage
- Painted and/or Textured Surfaces
- Planters & granite blocks
- Concrete Islands
- Flexible Delineators

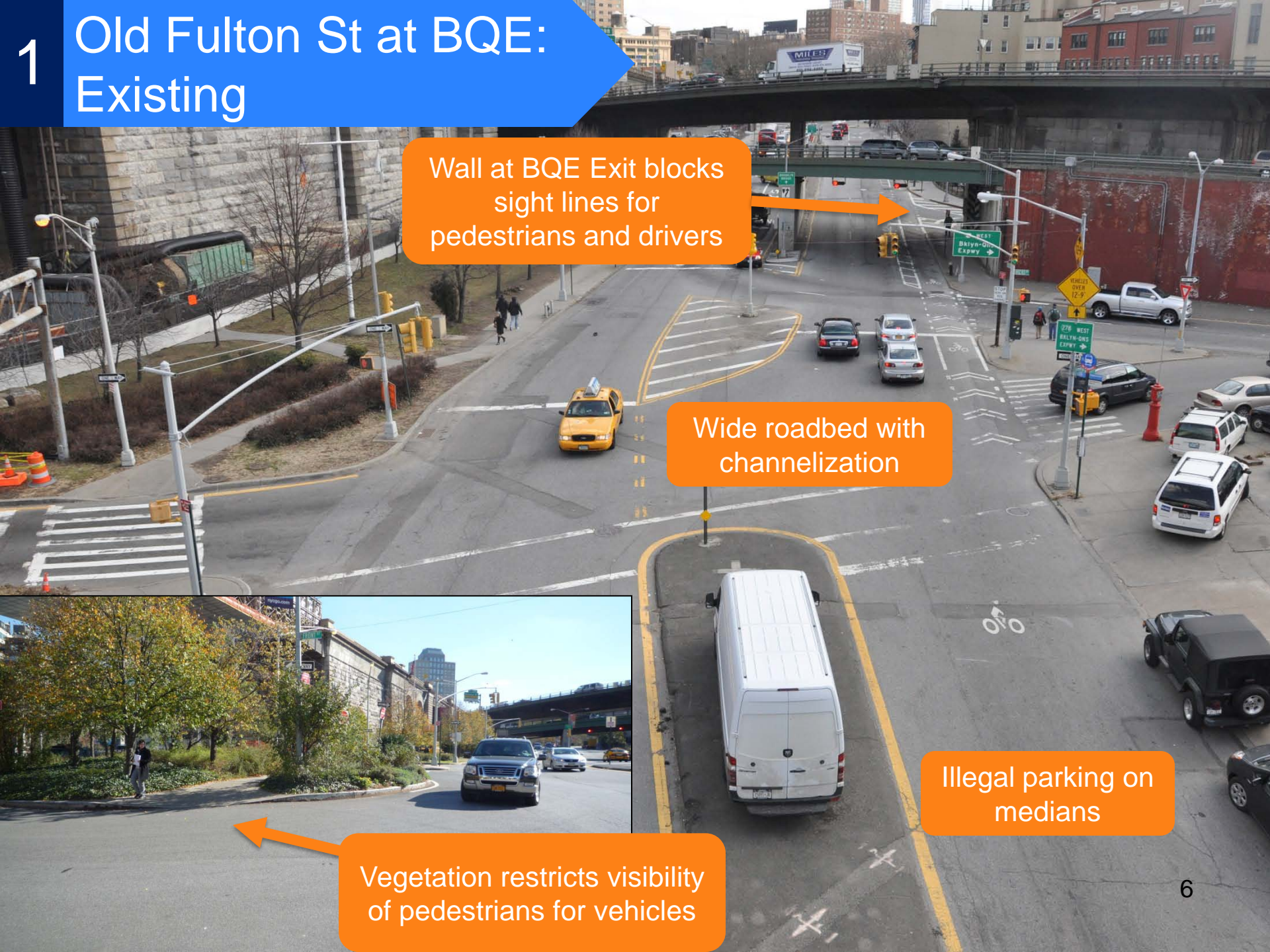


# Proposed





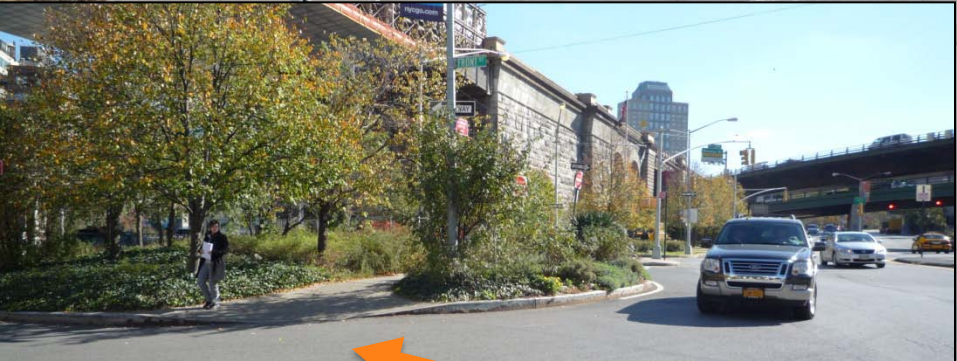
# 1 Old Fulton St at BQE: Existing



Wall at BQE Exit blocks sight lines for pedestrians and drivers

Wide roadbed with channelization

Illegal parking on medians



Vegetation restricts visibility of pedestrians for vehicles



1

# Old Fulton St at Front St: Existing

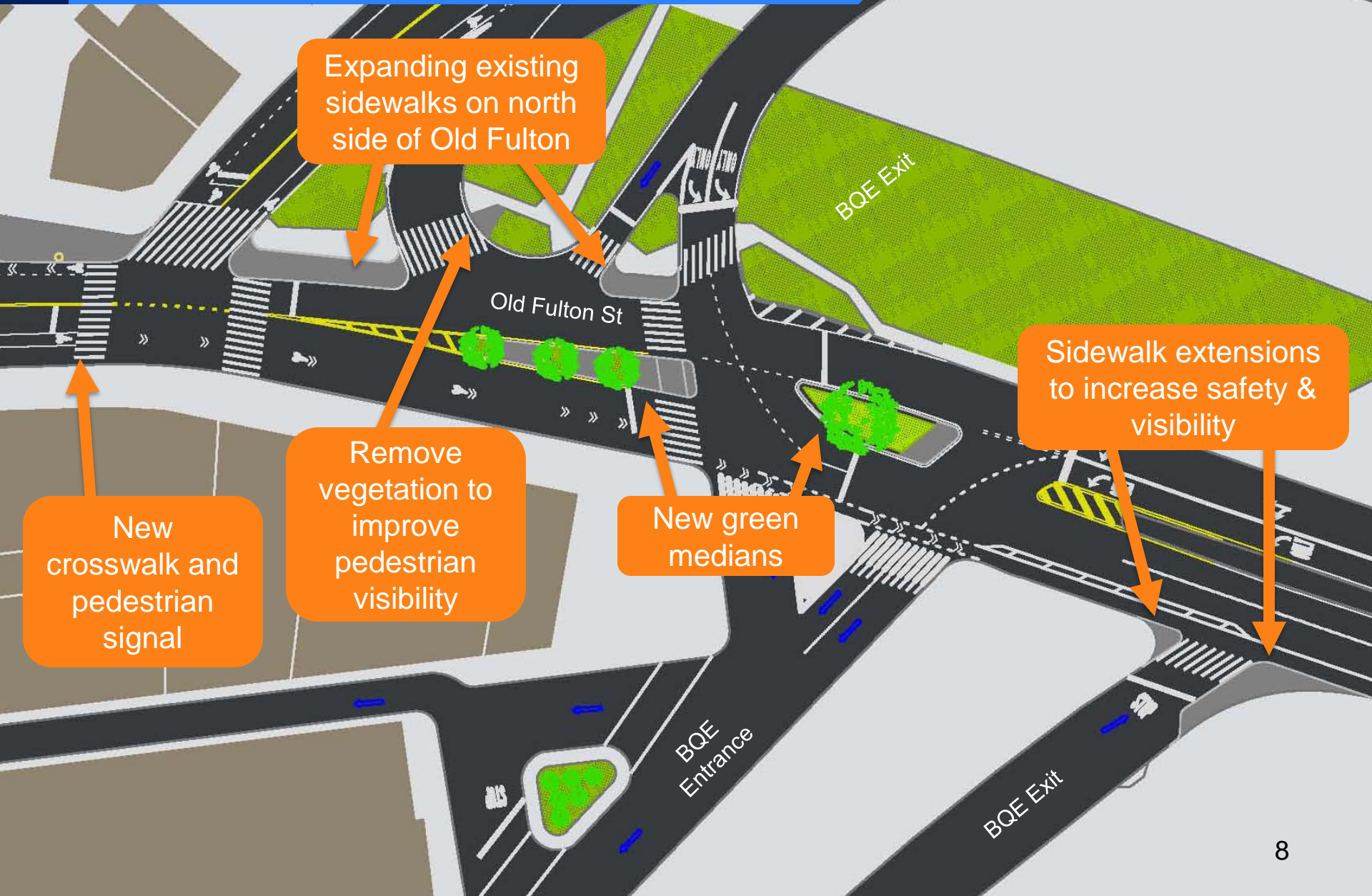


No west crosswalk and  
pedestrian signal



1

# Old Fulton St at BQE & Front St: Proposed



Expanding existing sidewalks on north side of Old Fulton

New crosswalk and pedestrian signal

Remove vegetation to improve pedestrian visibility

New green medians

Sidewalk extensions to increase safety & visibility



# 2 Old Fulton St West of Front St: Existing

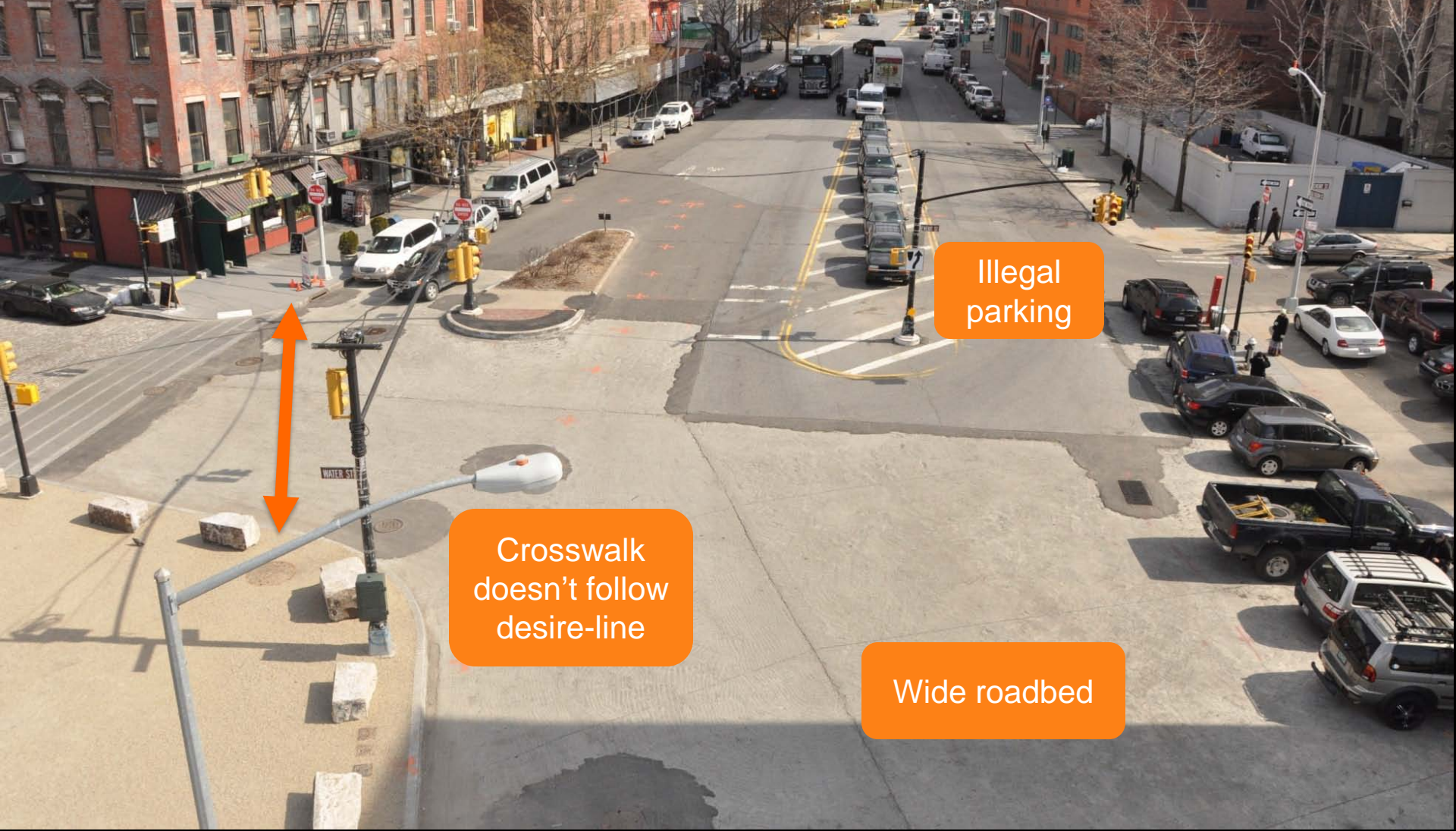


High pedestrian volumes + narrow sidewalk

Bicycle route connecting Brooklyn Bridge Park to DUMBO needs enhancement



# 2 Old Fulton St at Water St: Existing



Illegal parking

Crosswalk doesn't follow desire-line

Wide roadbed

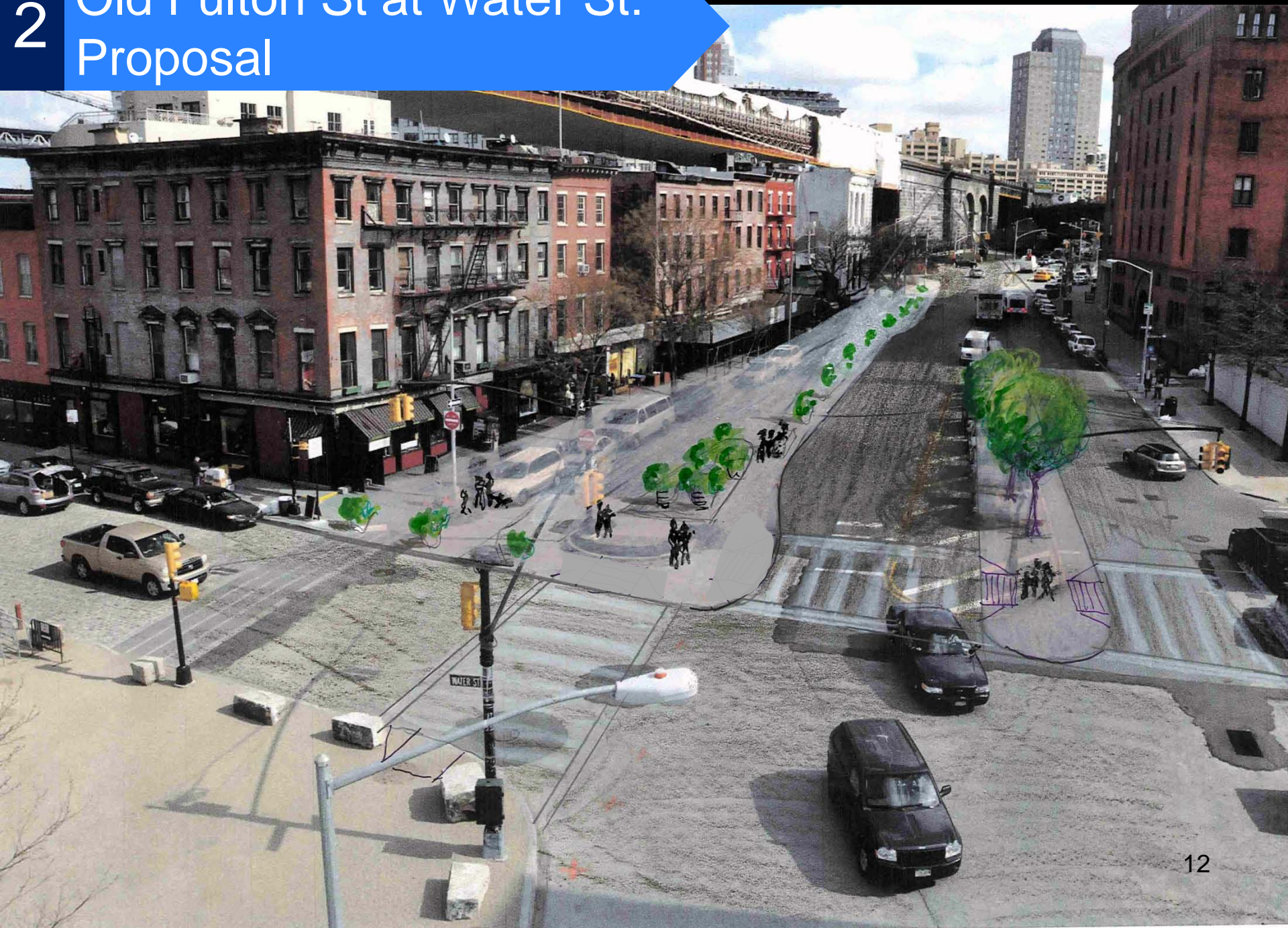


# 2 Old Fulton St at Water St: Proposal





# 2 Old Fulton St at Water St: Proposal





# 3 Front St at York St: Existing



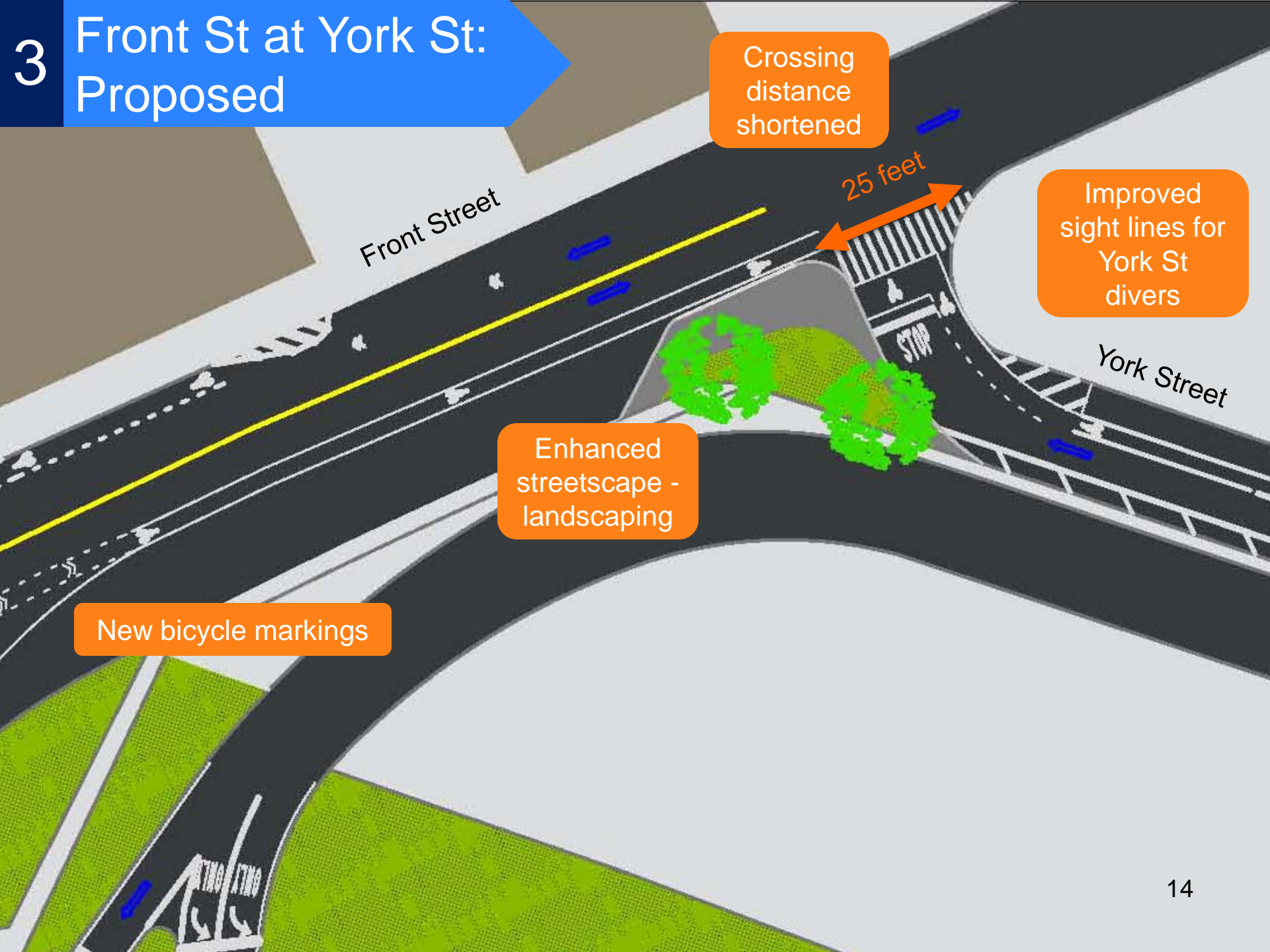
Long crossing distance



Difficult sight lines for drivers on York St results in pedestrian conflicts



# 3 Front St at York St: Proposed



Crossing distance shortened

25 feet

Improved sight lines for York St divers

Enhanced streetscape - landscaping

New bicycle markings



# Proposal Summary



1. Expand sidewalk on north side of Old Fulton Street between Water & Front Streets with crushed gravel, planters and granite blocks while maintaining parking
2. Install new signals at Furman Street/Old Fulton Street and Old Fulton Street/Front Street
3. Construct landscaped concrete medians and islands
4. Construct landscaped neckdown on Front and York Streets
5. Construct neckdowns on Old Fulton Street at Front Street and at the BQE exit
6. Expand sidewalks on north side of Old Fulton Street at Front Street
7. Install bicycle markings on Old Fulton and Front Streets
8. Eliminate U-turn at foot of Old Fulton Street





[www.nyc.gov/dot](http://www.nyc.gov/dot)

Thank  
You



# Appendix



# Volumes Combined into 1 lane

