

Maspeth Bypass and Intersection Normalization, Queens



Commissioner Janette Sadik-Khan New York City Department of Transportation
Presented to Queens CB5 Board Meeting June 15, 2011

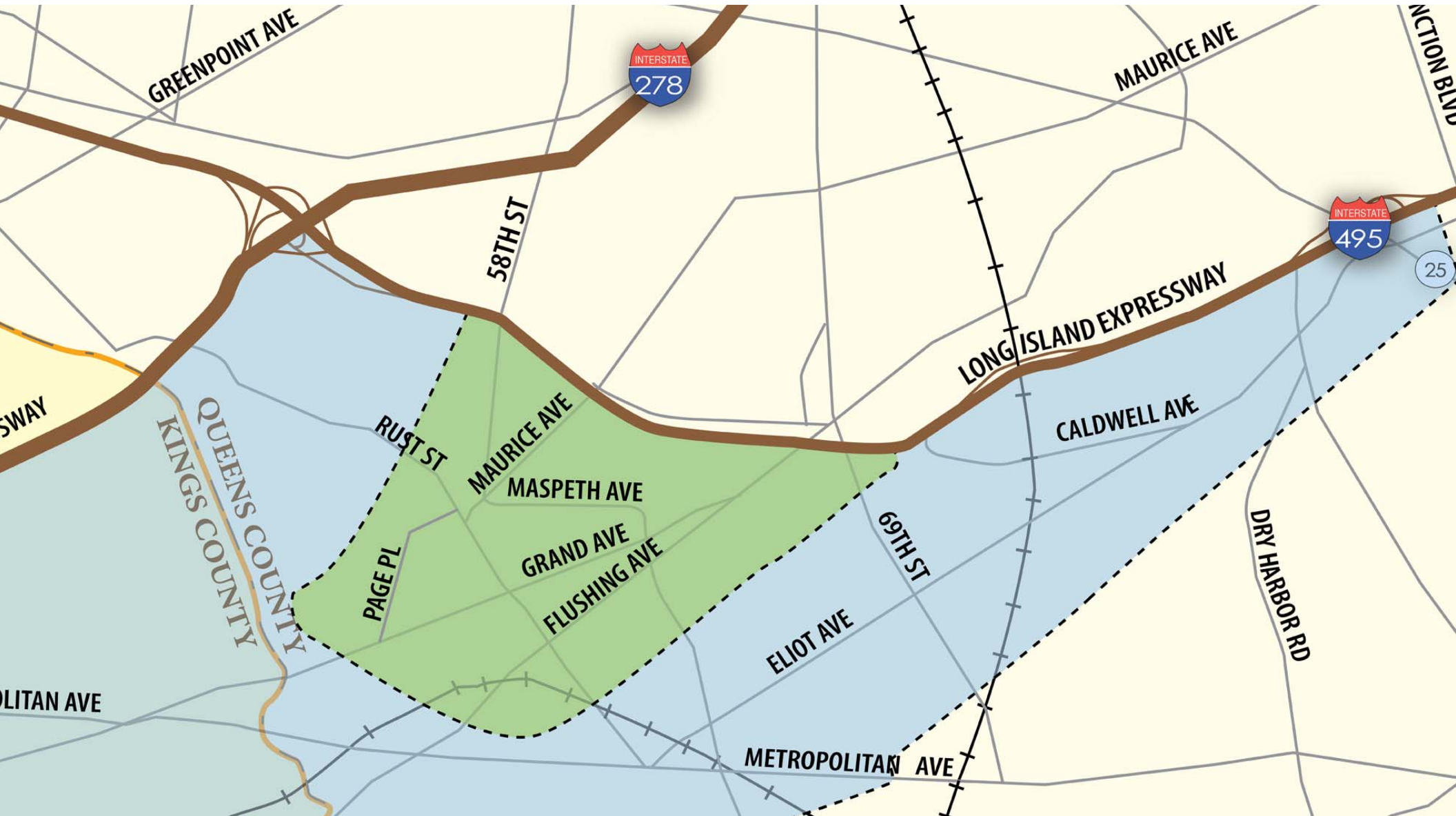
Outline

- Project context and background
- Solutions proposed
- Public outreach summary
- Revised plans based on outreach
- Items for board approval

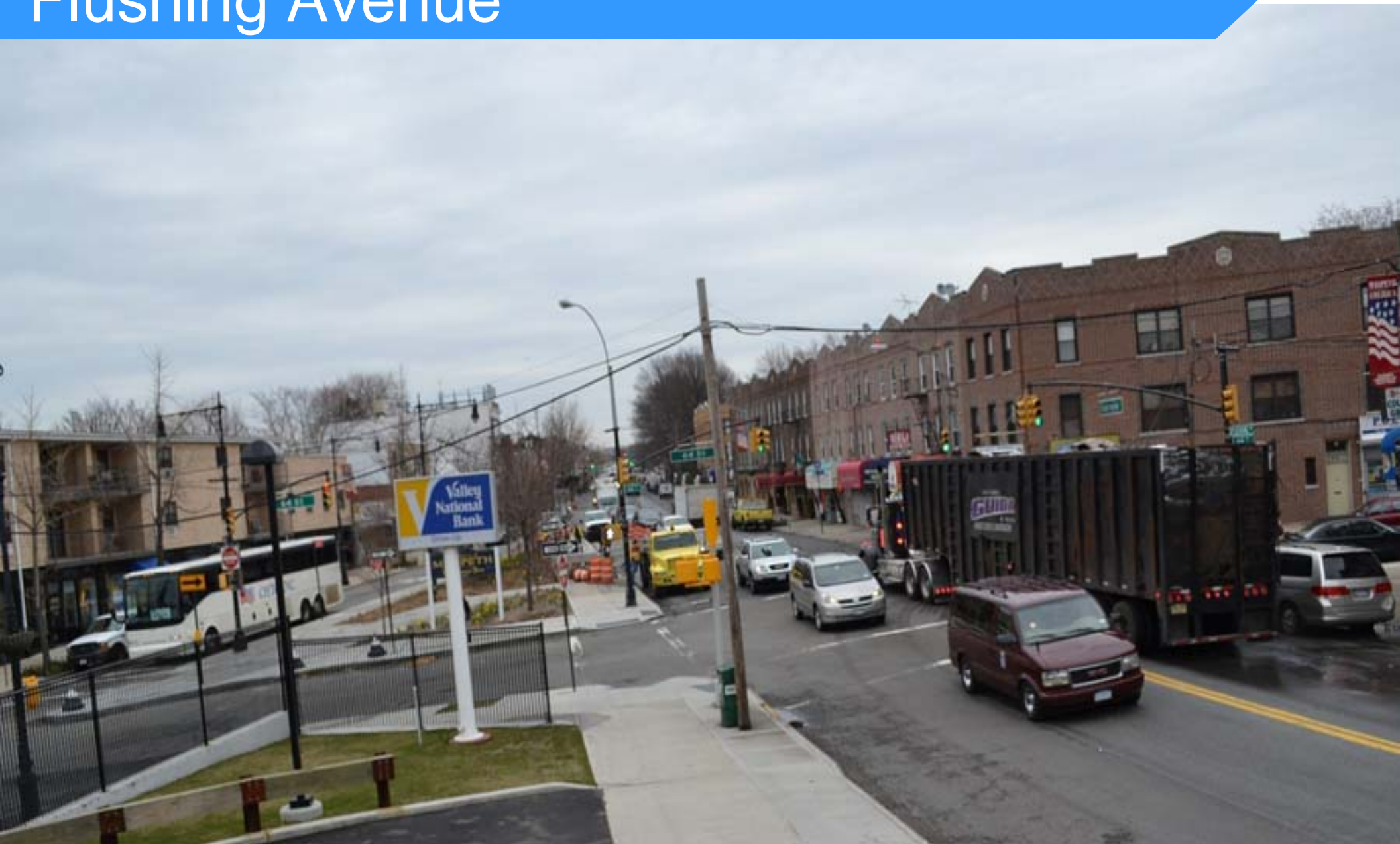
Project Context

- Concern about cut-through truck traffic on Grand and Flushing Avenues
- CB, Civic Groups and Elected Officials asked for Maspeth Bypass
- Desire for a safe bypass route to industrial areas without impacting Maspeth community

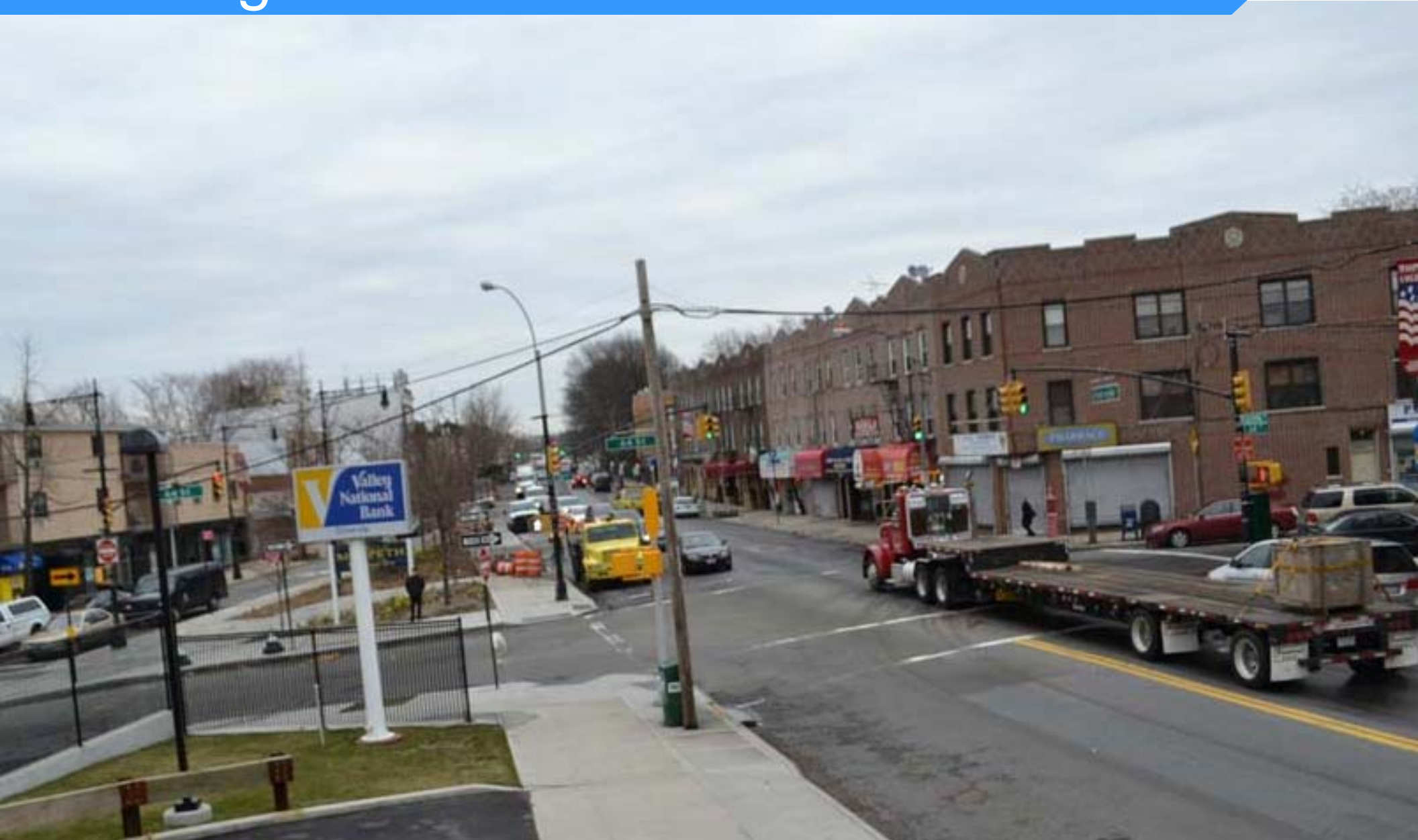
Project Area



Problem – Large Trucks on Grand and Flushing Avenue



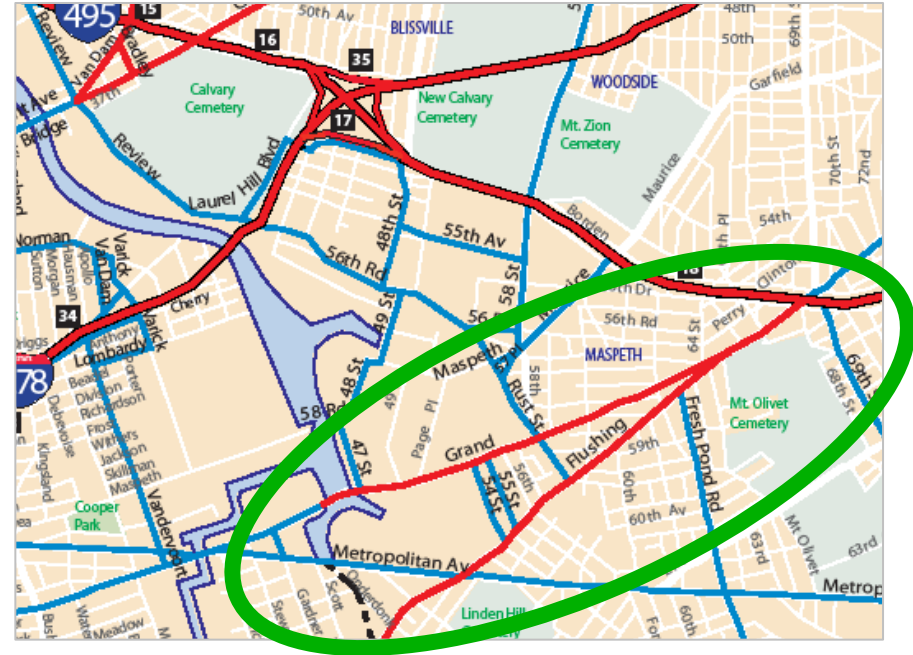
Problem – Large Trucks on Grand and Flushing Avenue



Truck Routes in Maspeth

Existing Truck Routes

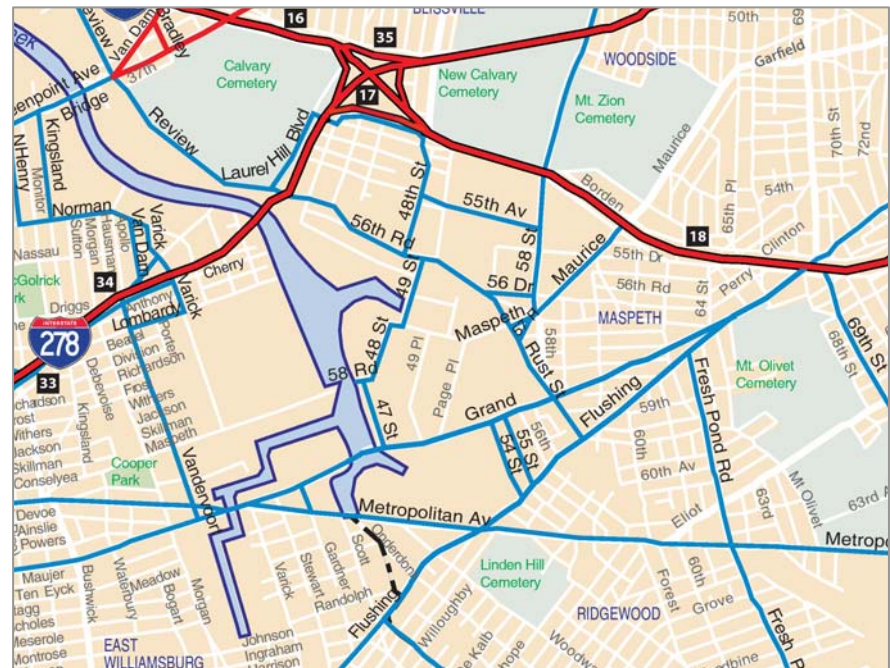
Grand Avenue and Flushing Avenue were through truck routes in Queens but local truck routes in Brooklyn



Truck Route Changes

Grand Avenue and Flushing Avenue became local truck routes in Queens and Brooklyn

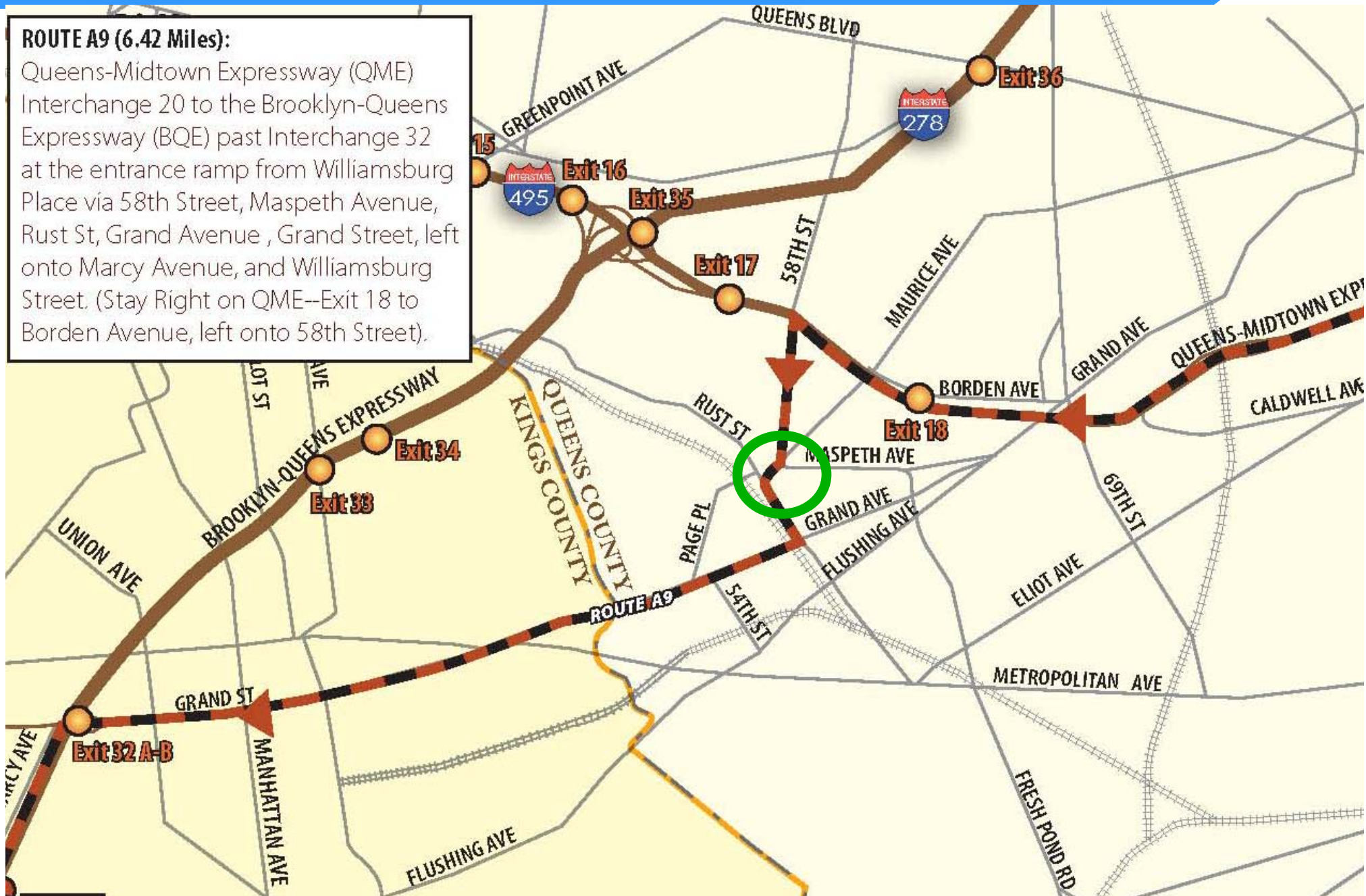
Rule change effective March 25, 2011



Community Proposed Maspeth Bypass

ROUTE A9 (6.42 Miles):

Queens-Midtown Expressway (QME) Interchange 20 to the Brooklyn-Queens Expressway (BQE) past Interchange 32 at the entrance ramp from Williamsburg Place via 58th Street, Maspeth Avenue, Rust St, Grand Avenue, Grand Street, left onto Marcy Avenue, and Williamsburg Street. (Stay Right on QME--Exit 18 to Borden Avenue, left onto 58th Street).



Five-Leg Intersection: Current condition



Maspeth Ave / 58th Street / Maspeth Ave



Maspeth Ave / 58th Street / Maspeth Ave



Maspeth Ave / 58th Street / Maspeth Ave



09.06.2011 12:32

Maspeth Ave / 58th Street / Maspeth Ave



Looking Southbound

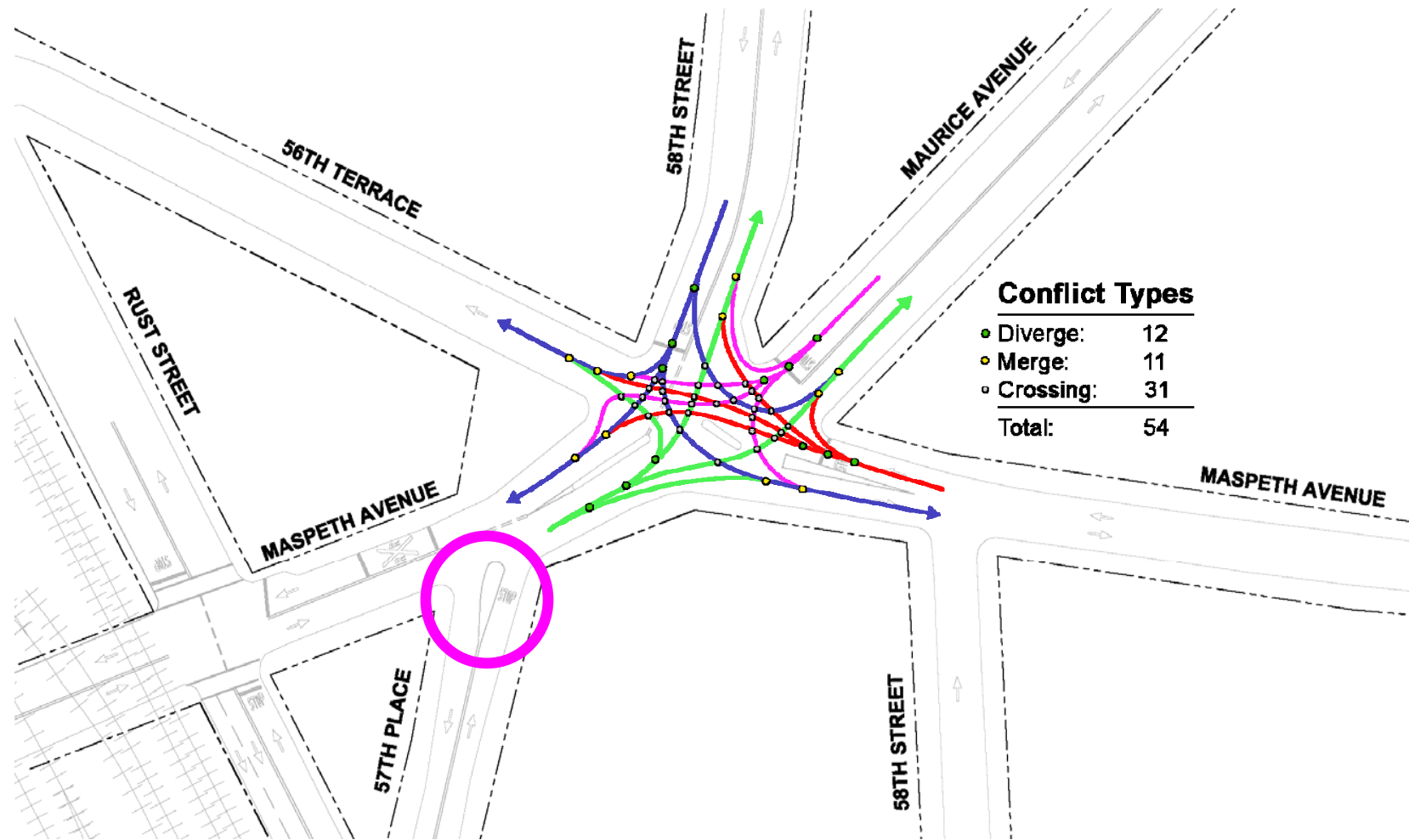
Maspeth Avenue at Rust Street



Looking southeast

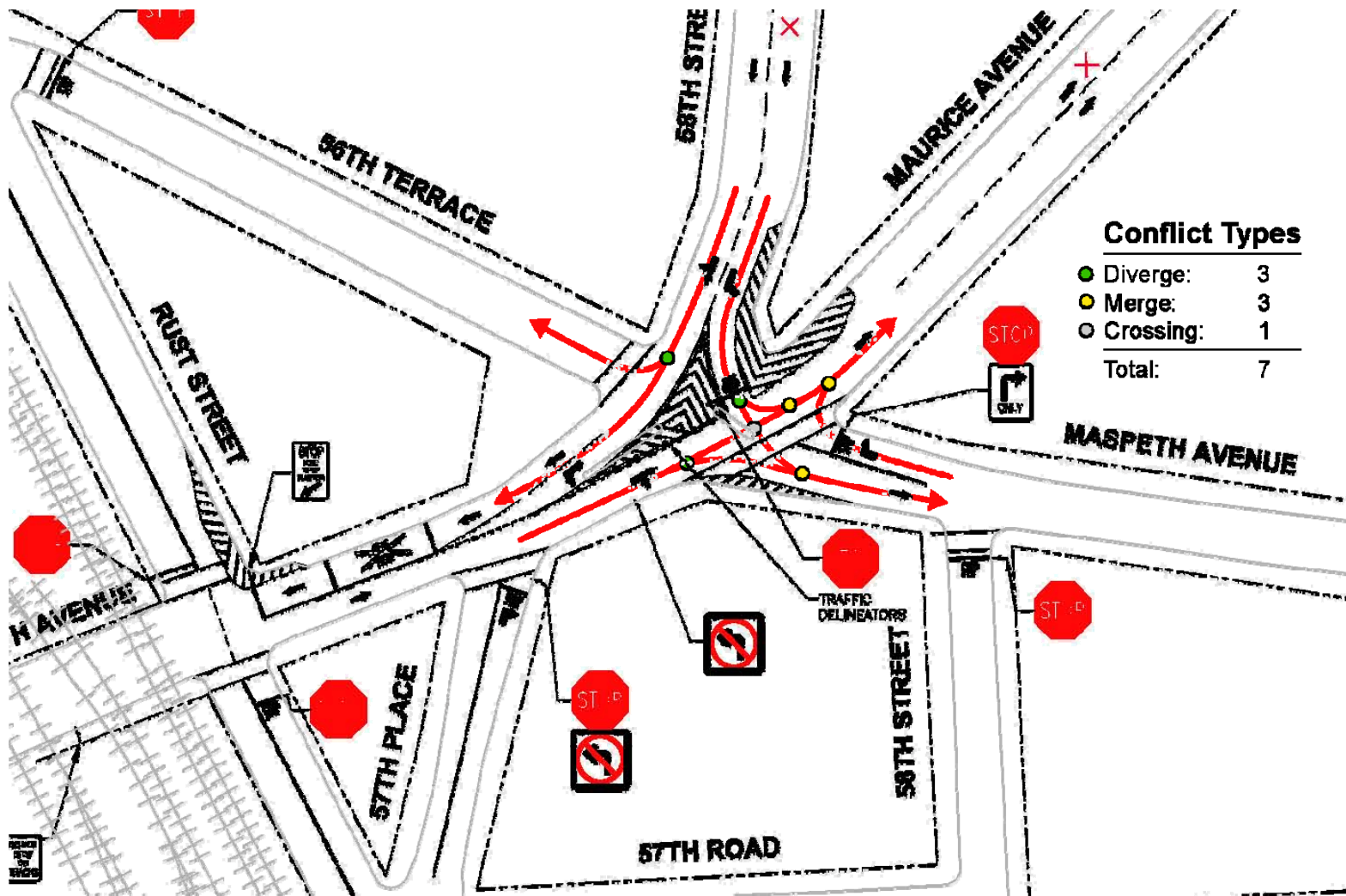
2011.03.17 09:47

Five-Legged Intersection: Conflicts



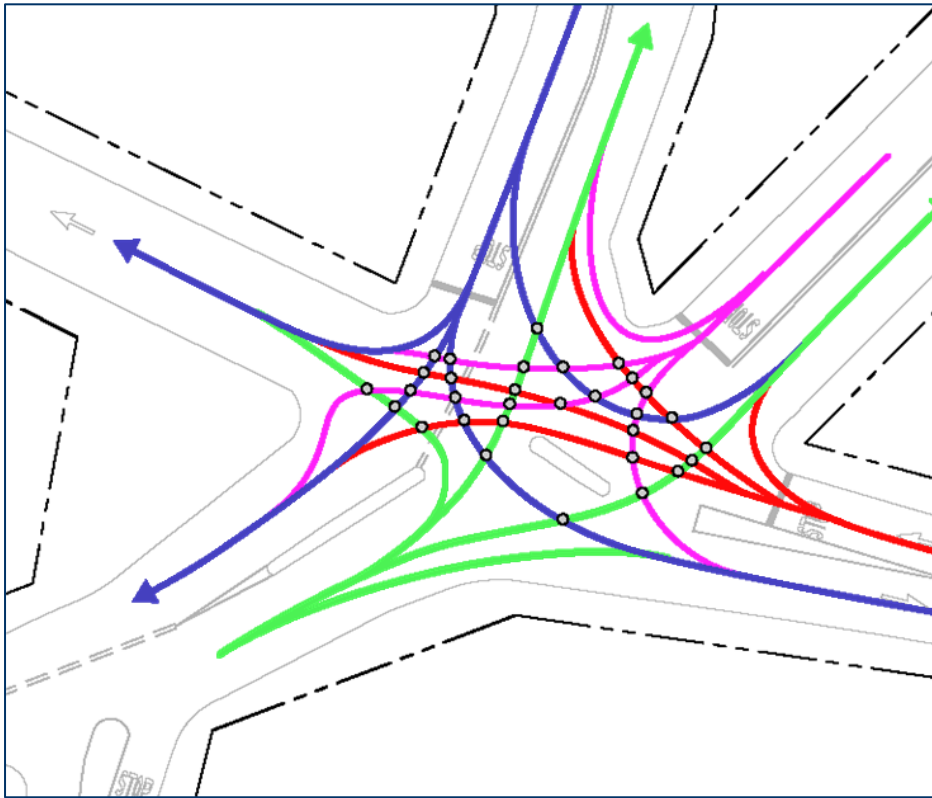
54 traffic conflict types

Five-Legged Intersection: Normalization

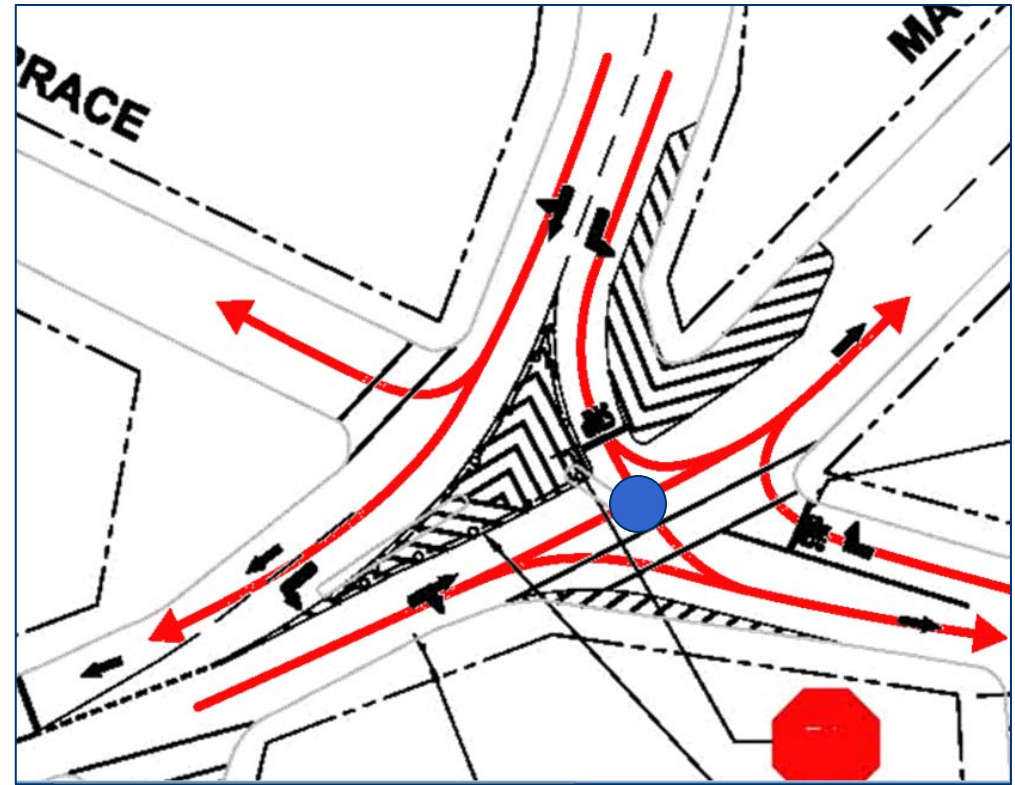


7 traffic conflict types

Five-Legged Intersection: Normalization



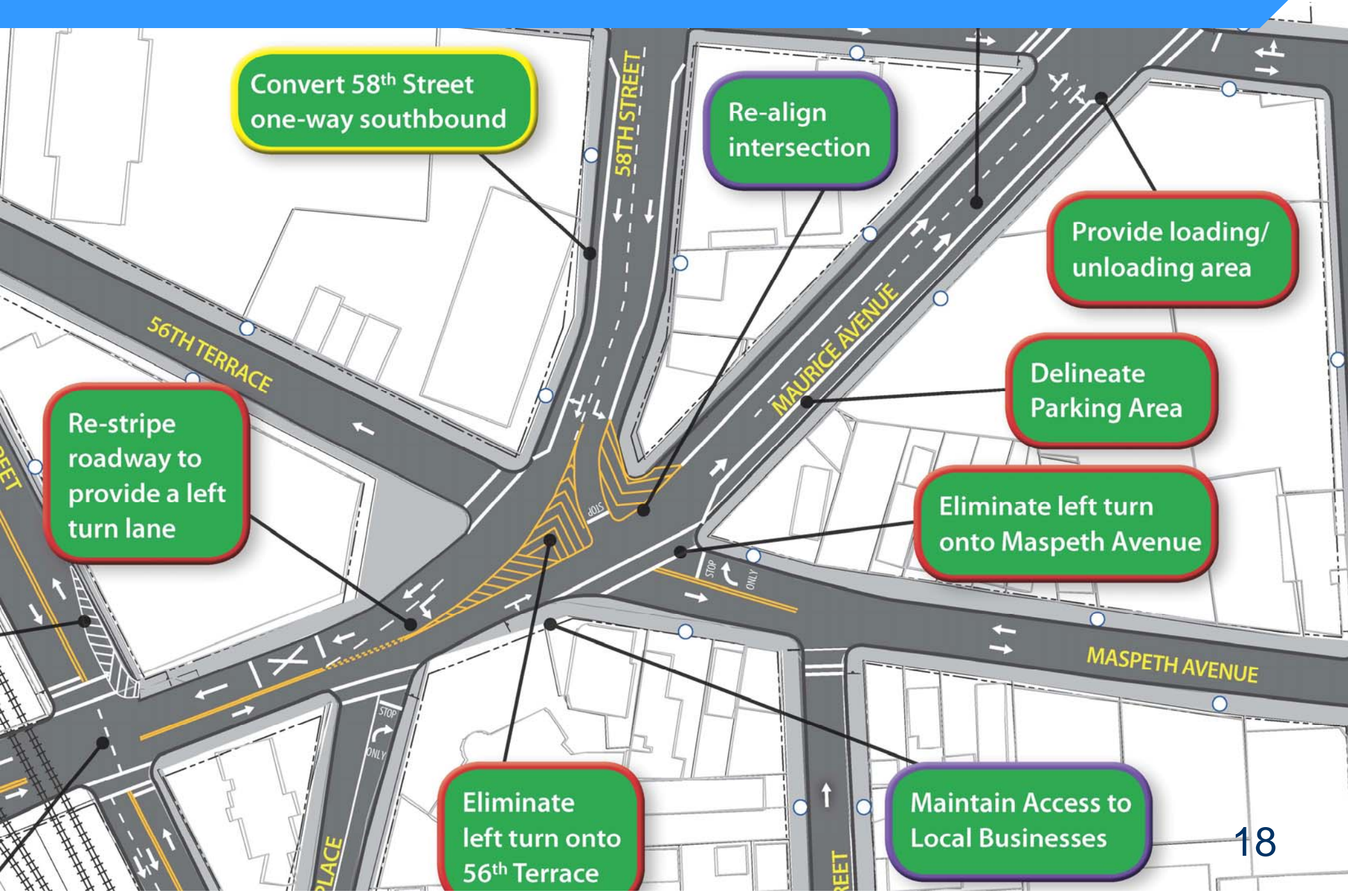
Existing Condition
31 Crossing Conflicts



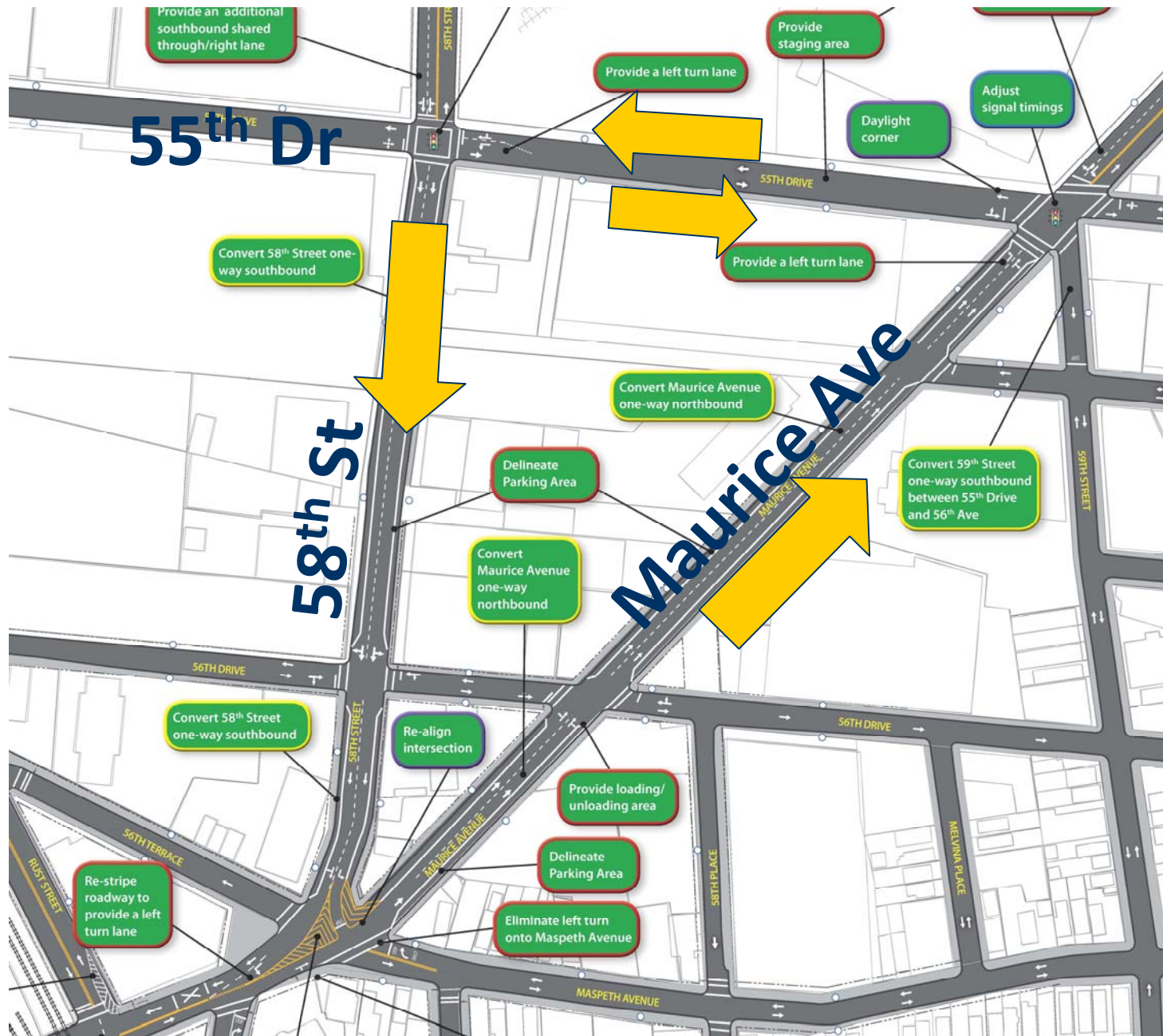
Proposed Condition
1 Crossing Conflict

97% REDUCTION

Five-Legged Intersection: Normalization



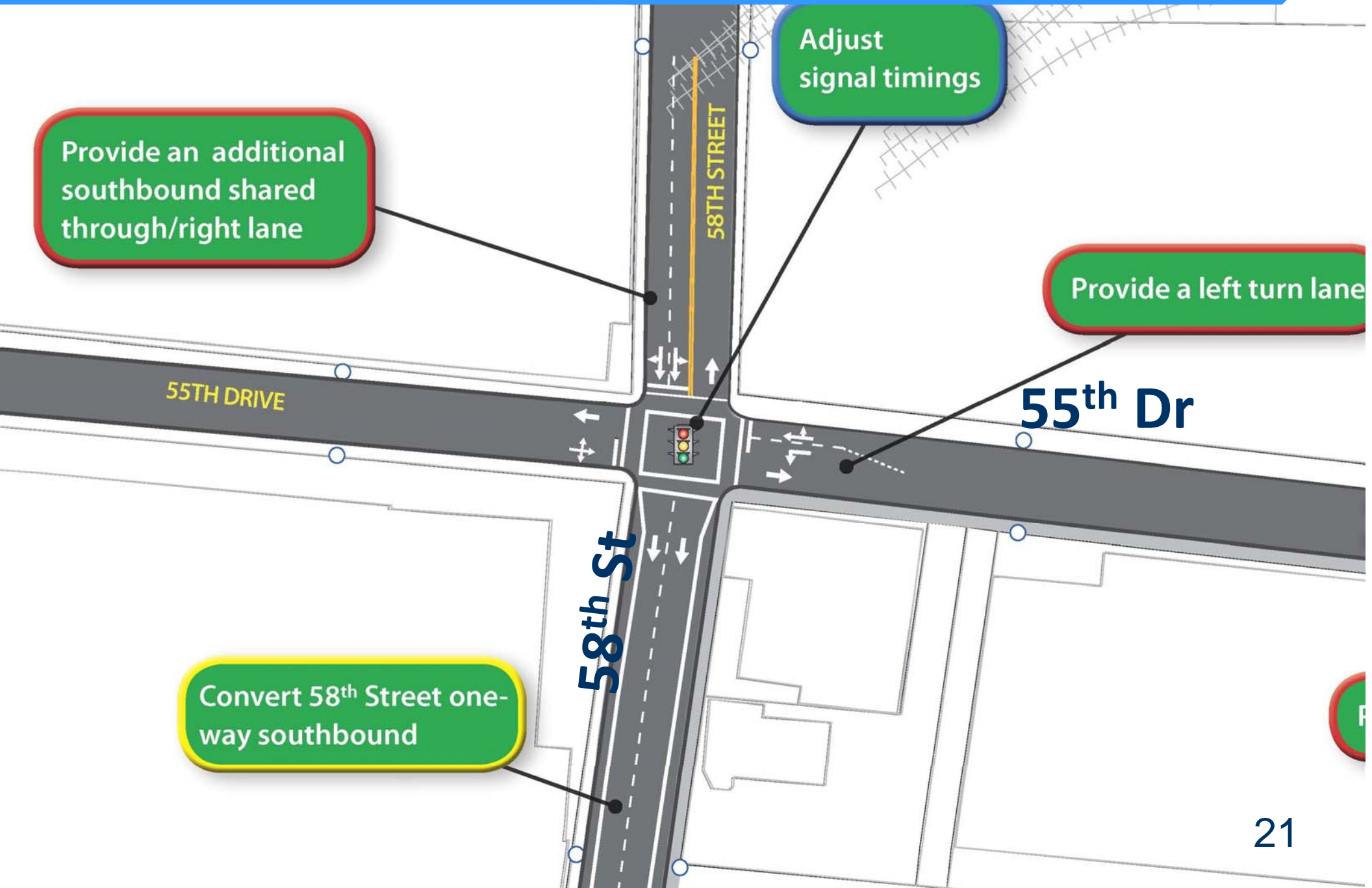
Five-Legged Intersection: Normalization



55th Drive at Maurice Avenue

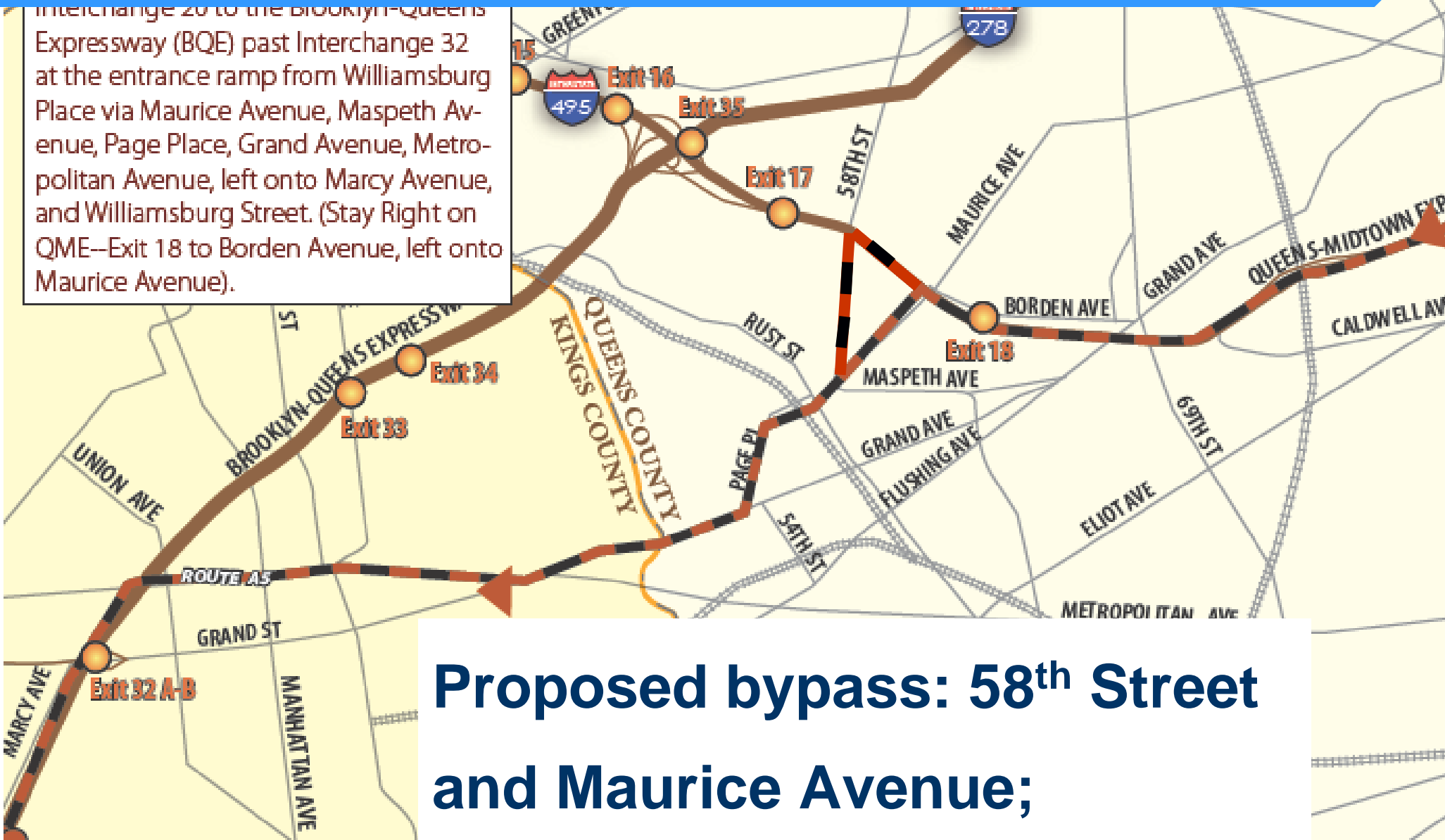


58th Street at 55th Drive



Post Analysis Maspeth Bypass Route

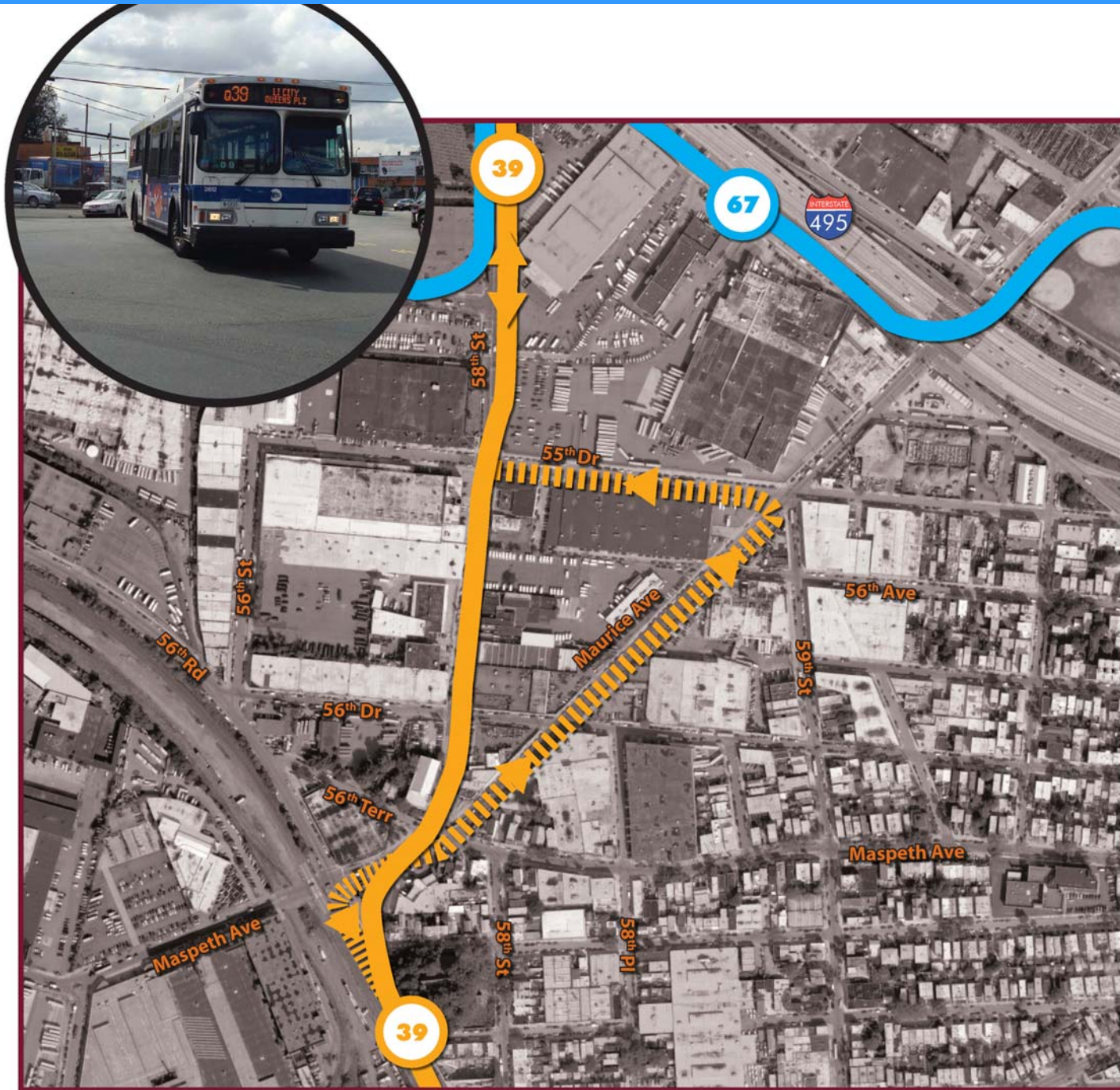
Interchange 20 to the Brooklyn-Queens Expressway (BQE) past Interchange 32 at the entrance ramp from Williamsburg Place via Maurice Avenue, Maspeth Avenue, Page Place, Grand Avenue, Metropolitan Avenue, left onto Marcy Avenue, and Williamsburg Street. (Stay Right on QME--Exit 18 to Borden Avenue, left onto Maurice Avenue).



**Proposed bypass: 58th Street
and Maurice Avenue;**

Page Place not Rust Street

Q39 Bus Re-Route



Outreach Briefings (Post Feb 2011)

- March 15 Maspeth Industrial Business Zone
- March 22 COMET Civic Group briefing
- March 22 Community Board 5 Trans. Committee
- March 23 Community Board 2 Trans. Committee
- March 24 Briefing for Petro, FDNY, Midtown Express
- March 25, 2011 Juniper Valley Civic Association
- April 5 Maspeth Industrial Business Zone members
- April 26 Community Board 5 Trans. Committee

Outreach Briefings (Post Feb 2011)

- May 11 Community Board 5 Board Meeting
- May 17 Community Board 2 Trans. Committee
- May 19 Open House Hosted by Petro
- May 24 Community Board 5 Trans. Committee
- May 25 Meeting with Clinton Diner
- May 25 Meeting with Delicias Andinas
- May 25 Meeting with Carplex Auto

Outreach Briefings (Post Feb 2011)

- May 25 Deli Plant Milk Store
- May 26 Briefing for Coca Cola
- May 26 Open House Hosted by Petro
- May 27 Meeting with Feldman Lumber
- June 8 Meeting with Juniors Cheesecake
- June 10 Meeting with Norampac NYC Inc
- June 14 Briefing of Maxsun Produce Corp
- June 14 Briefing of New Penn (Motor Carrier)

Business Access Discussion

● Signal Study

● Loading

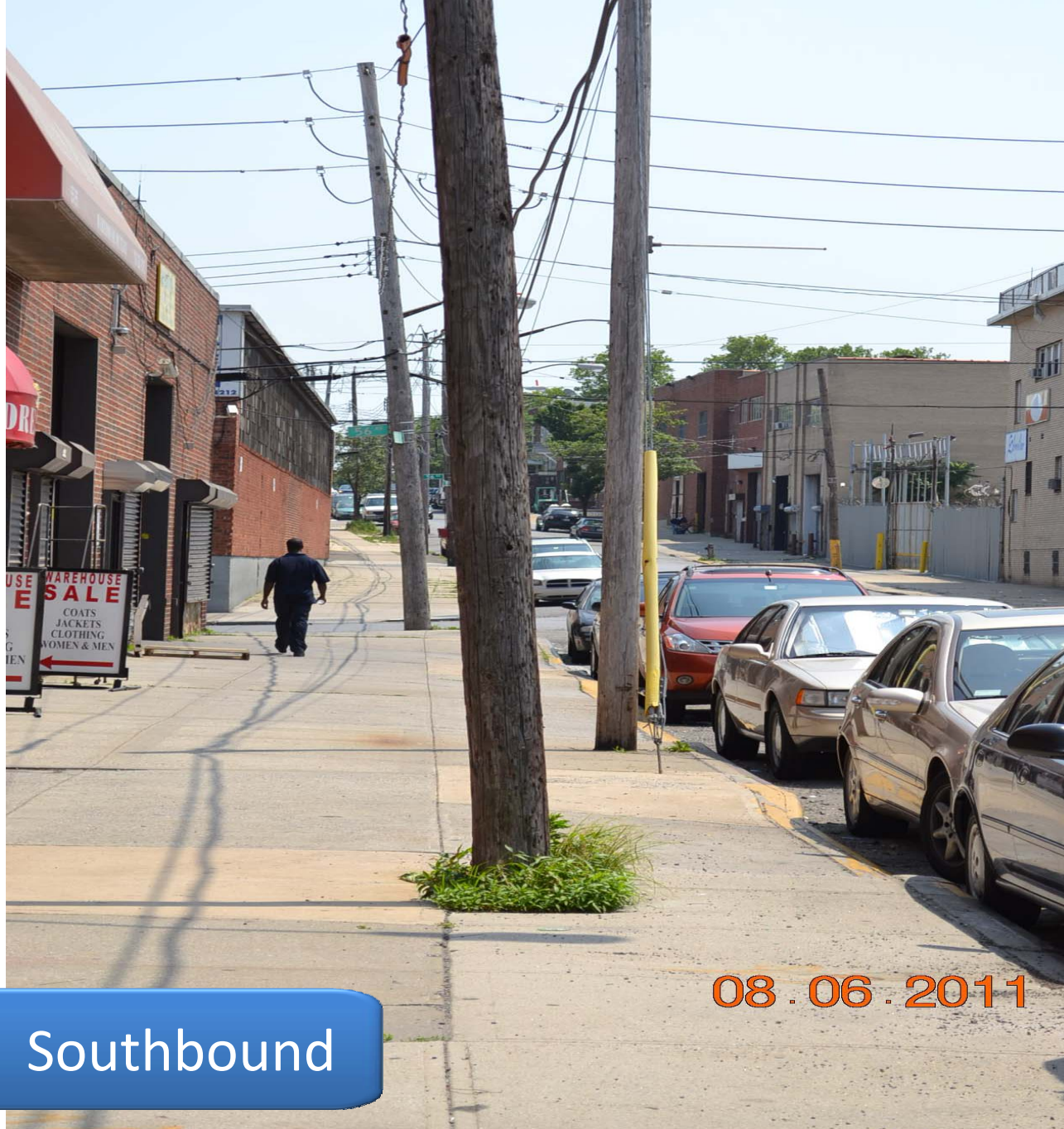
No Standing



Changes to Plan Due to Access Issues

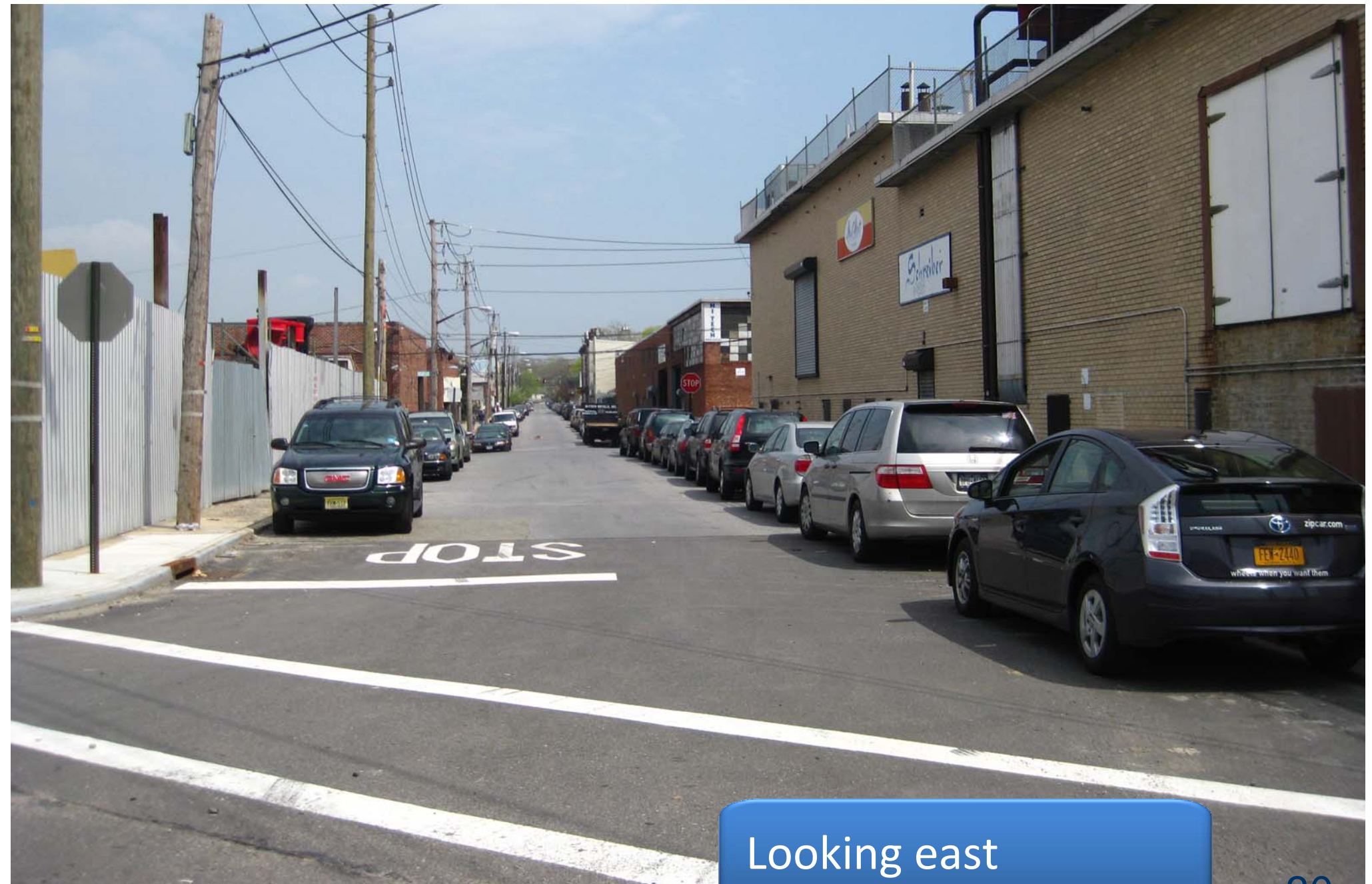
- 57th Place two-way Maspeth Avenue and 57th Road
 - Change made to accommodate Clinton Diner, Pat's Service Center and Akpon Custom Cabinetry
- 59th Street from Maurice to 56th Avenue (one block rather than 3 blocks)
 - To accommodate Alle Processing on 59th Street

Maurice Avenue at 59th Street



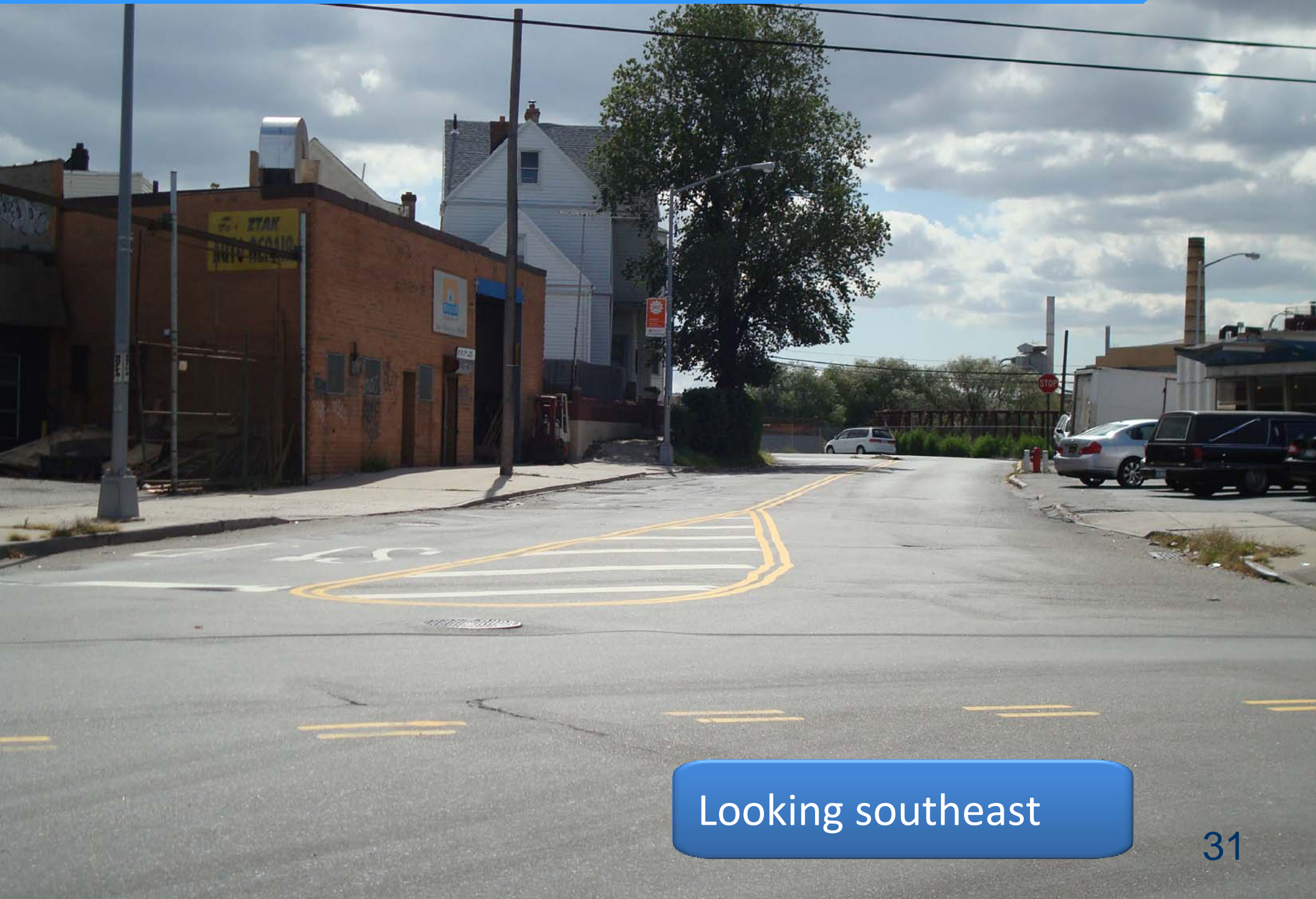
Looking Southbound

Maurice Avenue at 56th Avenue



Looking east

57th Place at Maspeth Avenue



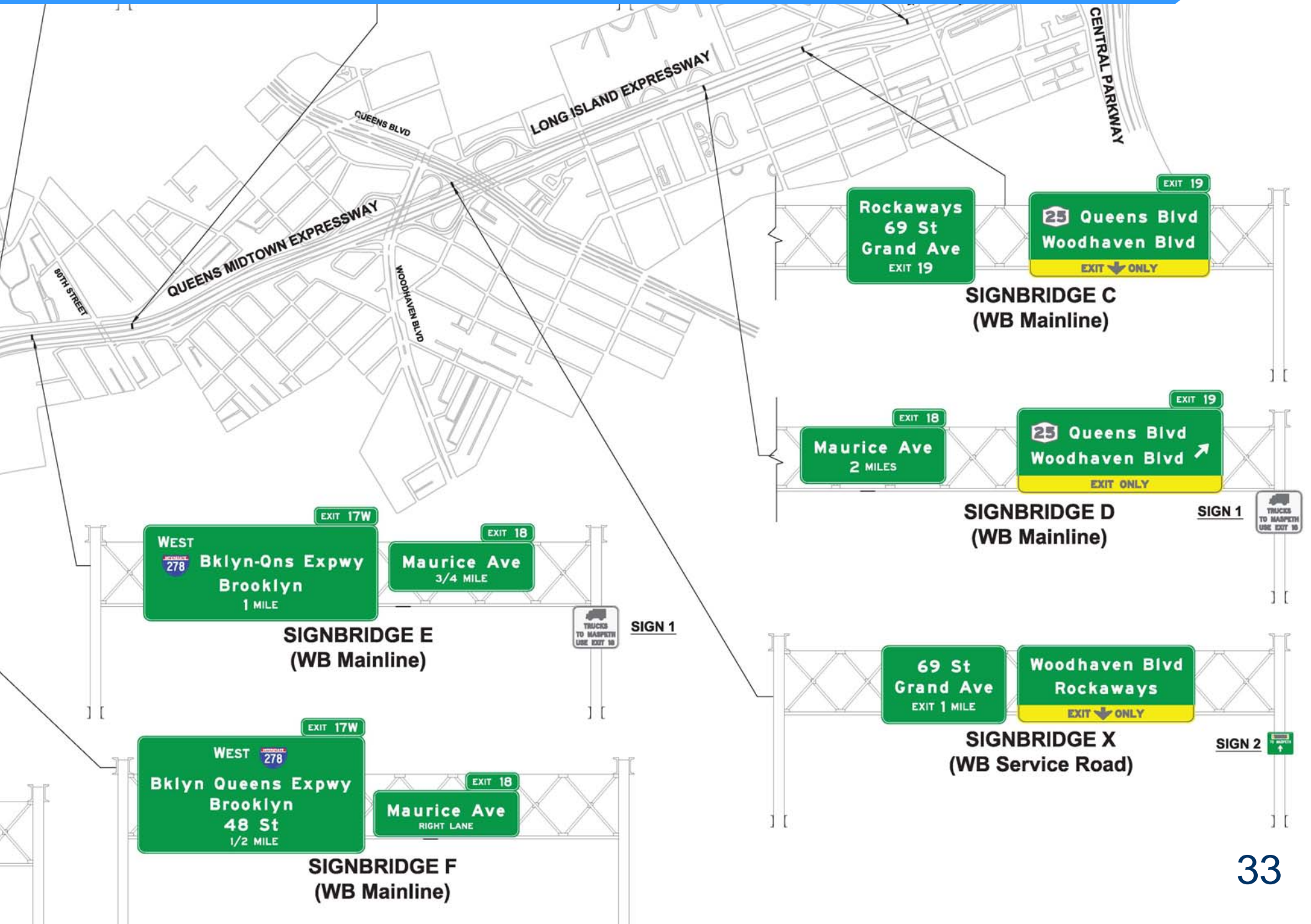
Looking southeast

Maurice Avenue north of Maspeth Avenue

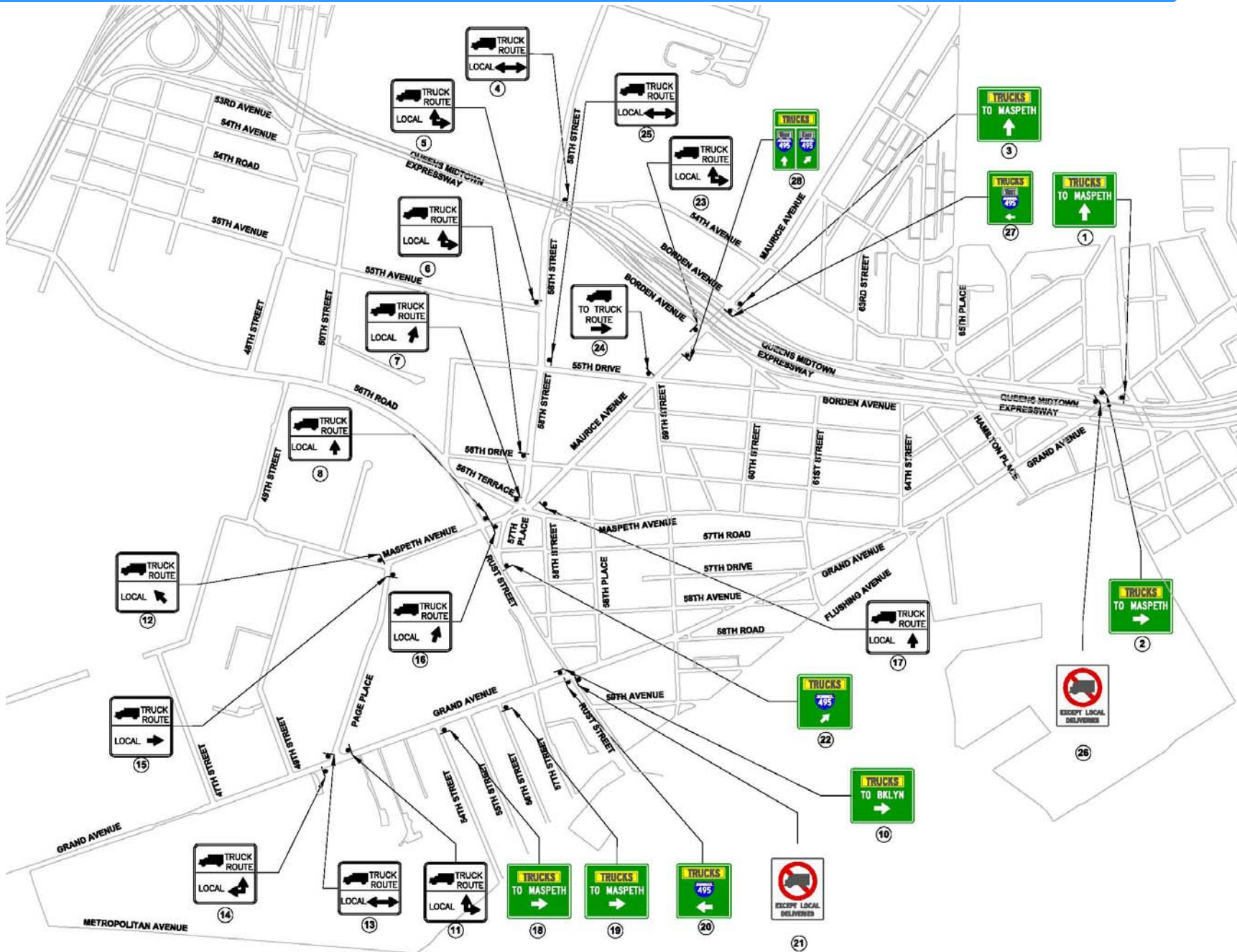


Looking Southbound

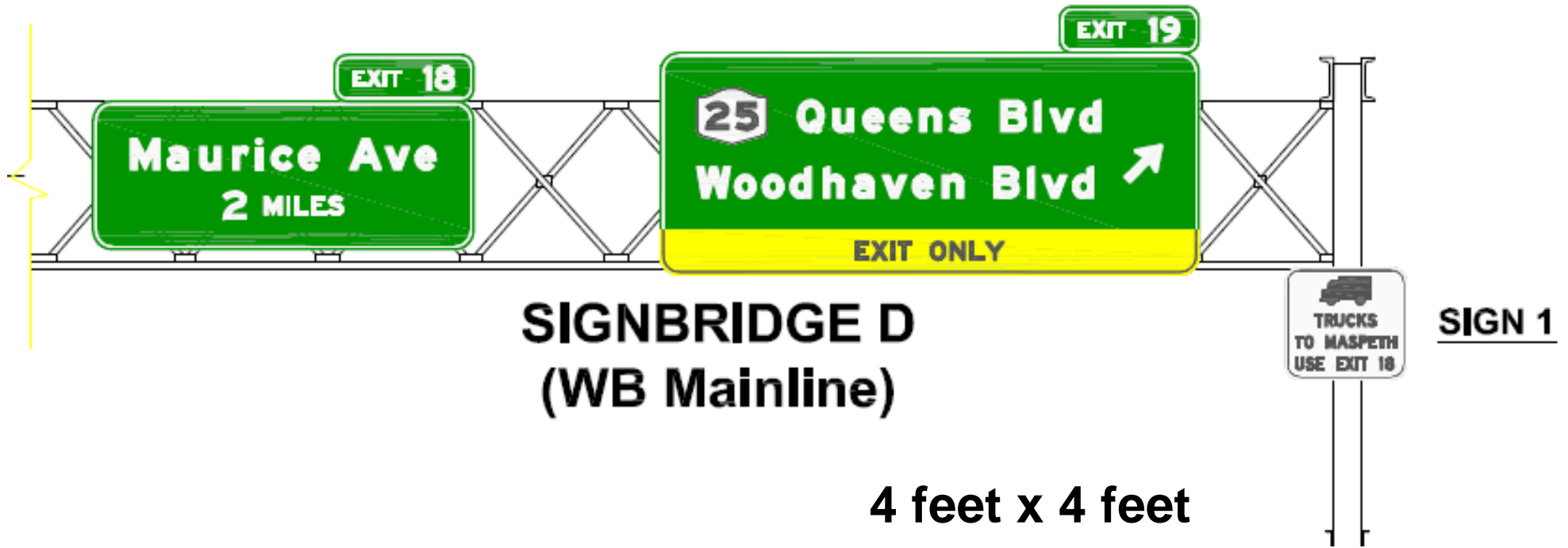
Proposed Highway Truck Route Signage



Proposed Local Truck Route Signage



Highway Truck Route Signage



Changes to Plan

- 57th Place to remain two-way between Maspeth Avenue and 57th Road
- 59th Street one way southbound from Maurice to 56th Avenue (one block rather than 3 blocks)

One way conversions for approval

- Convert Maurice Avenue from Maspeth Avenue to 55th Drive to a one-way street northbound
- Convert 59th Street from 55th Drive to 56th Avenue to a one-way street southbound

Questions?