

Prospect Park West Bicycle Path and Traffic Calming Update

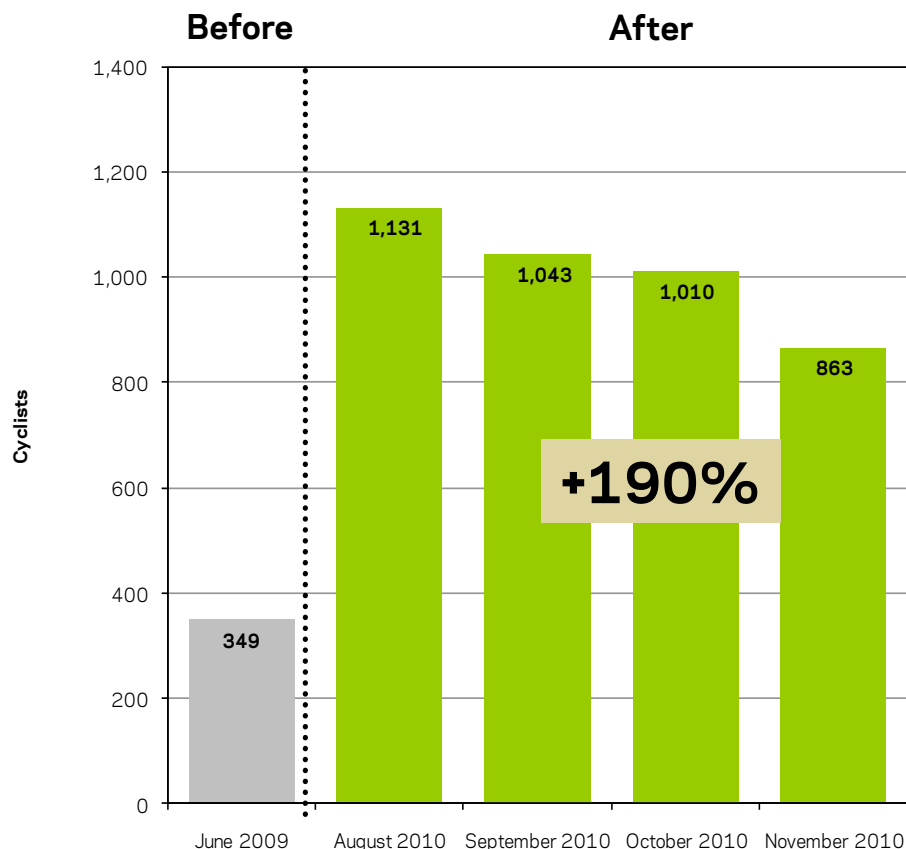
Preliminary
Before & After Results

December 3, 2010



NYC Department of Transportation
Office of Bicycle and Pedestrian Programs

Weekday Bicycle Count Results- Before & After



Prospect Park West
Between 4th and 5th Streets
Cyclist Volumes - 12 Hour: 7am-7pm, Weekdays

Notes:

- 190% increase based on average of after counts compared to before count
- Data from a single weekday count (06/09/09; 08/17/10; 09/15/10; 10/12/10 and 11/09/10)

- Weekday cycling has nearly **TRIPLED**
- Percentage of cyclists riding on the sidewalk **fell to 3%*** from 46%



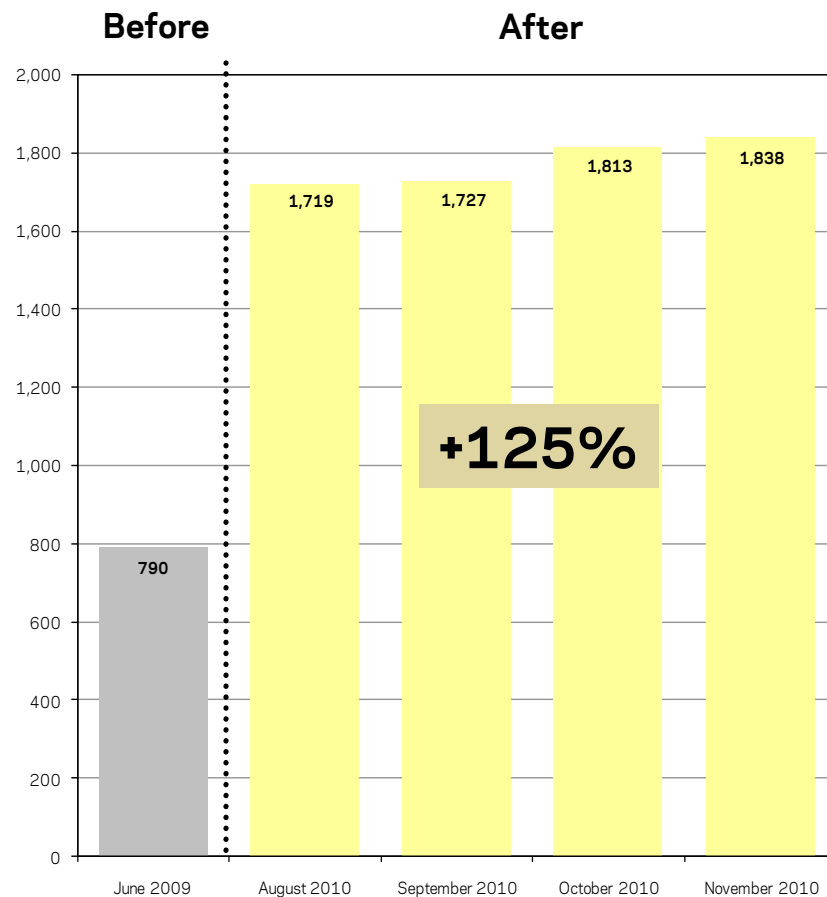
* 32% of these cyclists were children 12 years and younger and legally allowed to ride on the sidewalk

Weekend Bicycle Count Results- Before & After

- Weekend cycling has **DOUBLED**
- Percentage of cyclists riding on the sidewalk **fell to 4%*** from 20%



* 43% of these cyclists were children 12 years and younger and legally allowed to ride on the sidewalk



Prospect Park West Between 4th and 5th Streets Cyclist Volumes - 12 Hour: 7am-7pm, Weekends

Notes:

- 125% increase based on average of after counts compared to before count
- Data from a single weekday count (06/27/09; 08/21/10; 09/18/10; 10/09/10 and 11/13/10)

Traffic Speed – Before & After

- **BEFORE:** 3 of every 4 vehicles broke speed limit
- **AFTER:** Only 1 in 6 vehicles exceed speed limit

Prospect Park West Between 5 th and 6 th Streets Percent of Vehicles Over 30 MPH			
Time Period	BEFORE	AFTER	
	March 2009	July 2010	October 2010
AM Peak	76%	11%	22%
PM Peak	73%	23%	14%

Prospect Park West Between 5 th and 6 th Streets Average Speed (mph)			
Time Period	BEFORE	AFTER	
	March 2009	July 2010	October 2010
AM Peak	34.1 mph	25.1 mph	27.7 mph
PM Peak	32.8 mph	26.6 mph	25.9 mph

Source: NYCDOT Radar Study

Traffic Volumes- Before & After

Prospect Park West Weekday Peak Hour Vehicle Volume Summary

	Pre-Implementation Average Volume*	Post-Implementation Volume**	Change in Volume	Percent Change
Carroll Street AM Peak Hour (8-9AM)	1,064	1,108	45	4%
Carroll Street PM Peak Hour (4-5PM)	1,001	964	-37	-4%
11th Street AM Peak Hour (8-9AM)	835	837	2	0%
11th Street PM Peak Hour (4-5PM)	1,050	1,003	-47	-4%

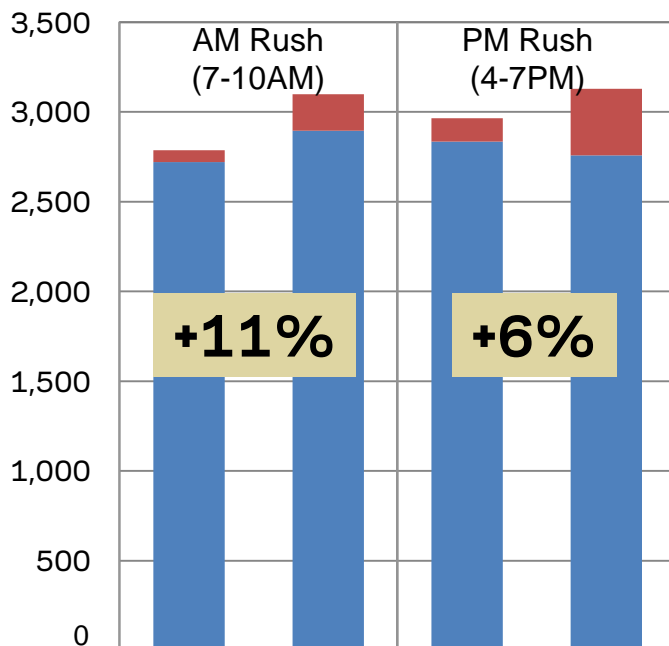
*Counts conducted April 2009 and May 2010

**Counts conducted October 2010

- PPW peak traffic volumes remain stable after implementation

Combined Vehicle and Bicycle Counts

Prospect Park West Combined Vehicle and Bicycle Counts AM & PM Rush



Prospect Park West Commuter Volume has INCREASED

- Prospect Park West handles 11% & 6% more commuters during the AM & PM rushes, respectively, after street reconfiguration

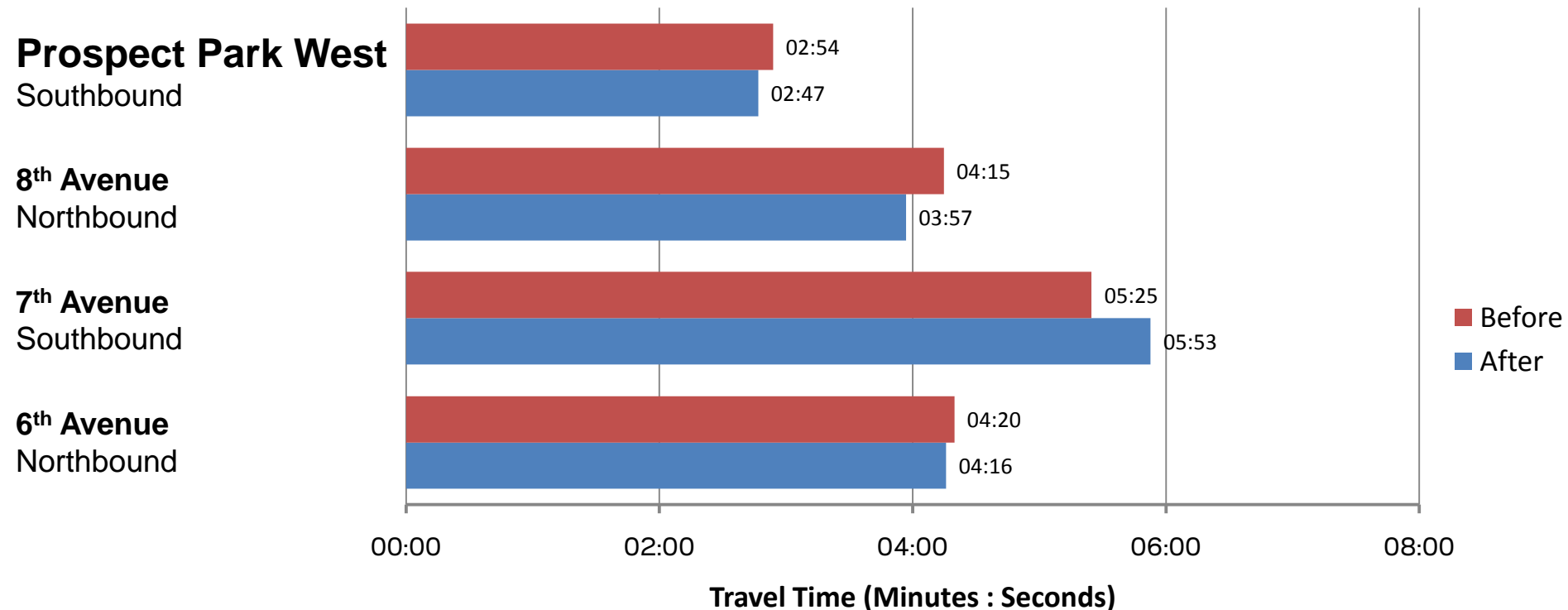
*Average of counts conducted April 21-23, 2009 and May 11-20, 2010 at Carroll St

**Counts conducted October 19-28, 2010 at Carroll St

***Bicycle counts conducted 06/10/09 and 10/12/10 at 4th St

Travel Times - Before & After (12-Hour Average)

Park Slope North-South Corridor Travel Times 15th Street - Union Street, Weekday Average, 7am-7pm



- Prospect Park West provides the shortest travel times through Park Slope

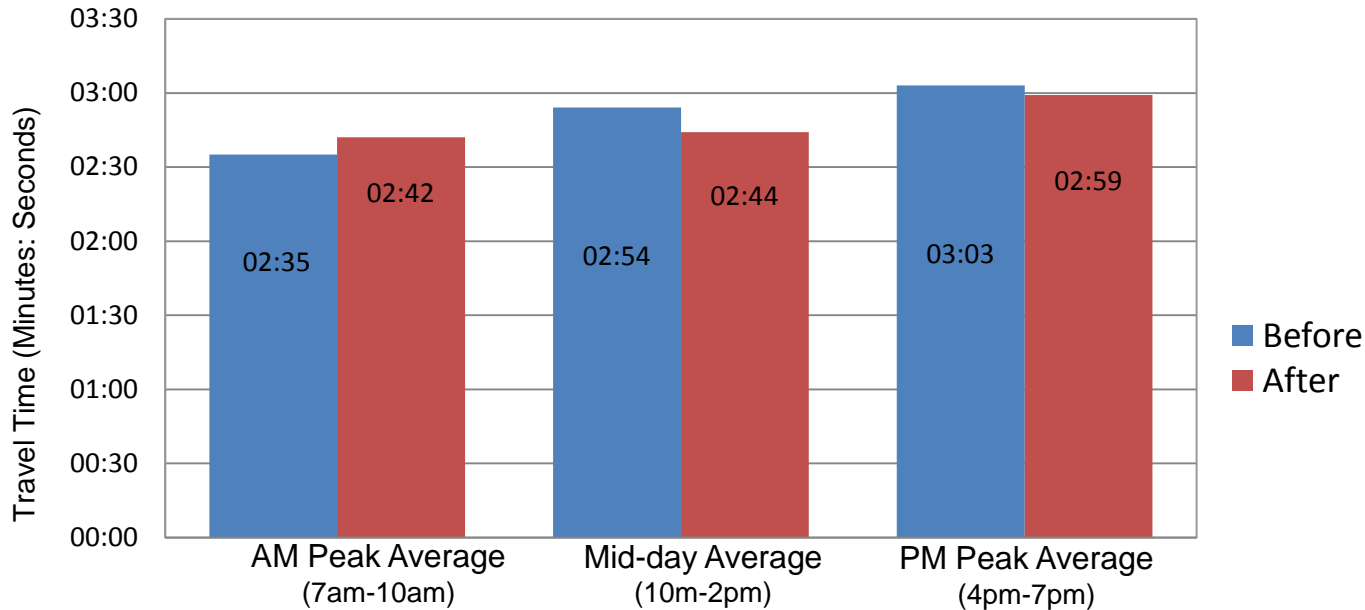
Weekday travel time averages are derived from 48 runs conducted once every 30 minutes over two days along each corridor

Before travel time surveys conducted May 11-12, 2010

After travel time surveys conducted October 19-20, 2010

Travel Times - Before & After (Peak Average)

Prospect Park Weekday Travel Times Union Street to 15th Street



- Prospect Park West travel times remained stable after implementation

Weekday average travel times derived from runs conducted once every 30 minutes over two days

Before travel time surveys conducted May 11-12, 2010

After travel time surveys conducted October 19-20, 2010

Roadway Design – Before & After

