



Tenth Avenue Public Space

CB 2 Traffic + Transportation Committee

11/03/2022



Project Team

NYC DOT Public Space

- Implementation coordination
- Technical expertise
- Standard DOT materials

MPD

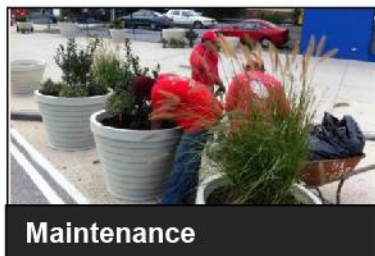
- Ongoing maintenance
- Long-term visioning

TFC:

- Public space implementation
- Public space amenities



NYC DOT Public Space



TF Cornerstone



An aerial photograph of a bustling outdoor plaza. The ground is paved with light-colored cobblestones. Numerous large, bright red patio umbrellas are scattered across the area, providing shade for people. Many individuals are seated on low, rectangular stone blocks or on folding chairs. Some people are standing and walking. The overall atmosphere is lively and social. The text 'MEATPACKING DISTRICT' is overlaid in large, white, bold, sans-serif capital letters on the left side of the image.

MEATPACKING DISTRICT

The Meatpacking Business Improvement District

THE TEAM

- Jeffrey LeFrancois, Executive Director
- Evan Sweet, Director of Operations + Planning
- Kevin Capuno, Operations Coordinator
- Tiffany Griffin, Director of Marketing
- Julia Bailey, Program + Event Coordinator

THE POINT

- Keep the district clean, safe, active, and beautiful
- Program + maintain 30k sq. ft of public plazas
- Operate 4 NYC Open Streets
- Support the businesses in the district
- Improve quality of life for all



SANITATION + PUBLIC SPACE

The BID has a team of 10 sanitation workers who work 7 days a week to provide supplemental sanitation services, including plaza maintenance, sidewalk sweeping, and little basket collection.

Over 50,000 bags of trash a year are bagged and collected by DSNY.

Every morning, plaza furniture is setup and umbrellas are opened. At night, furniture is stacked and locked up through an agreement with the BID and Community Board 2.

The BID would treat the new plaza as it does its other public spaces.



Design Proposal

Project Goals:

- Expand public space and add public space amenities
- Create new crossing for cyclists and pedestrians
- Enhance safety
- Traffic calming
- Clarify vehicular traffic pattern



Existing Conditions

Gap in bike network.



Existing Conditions

Gap in bike network.

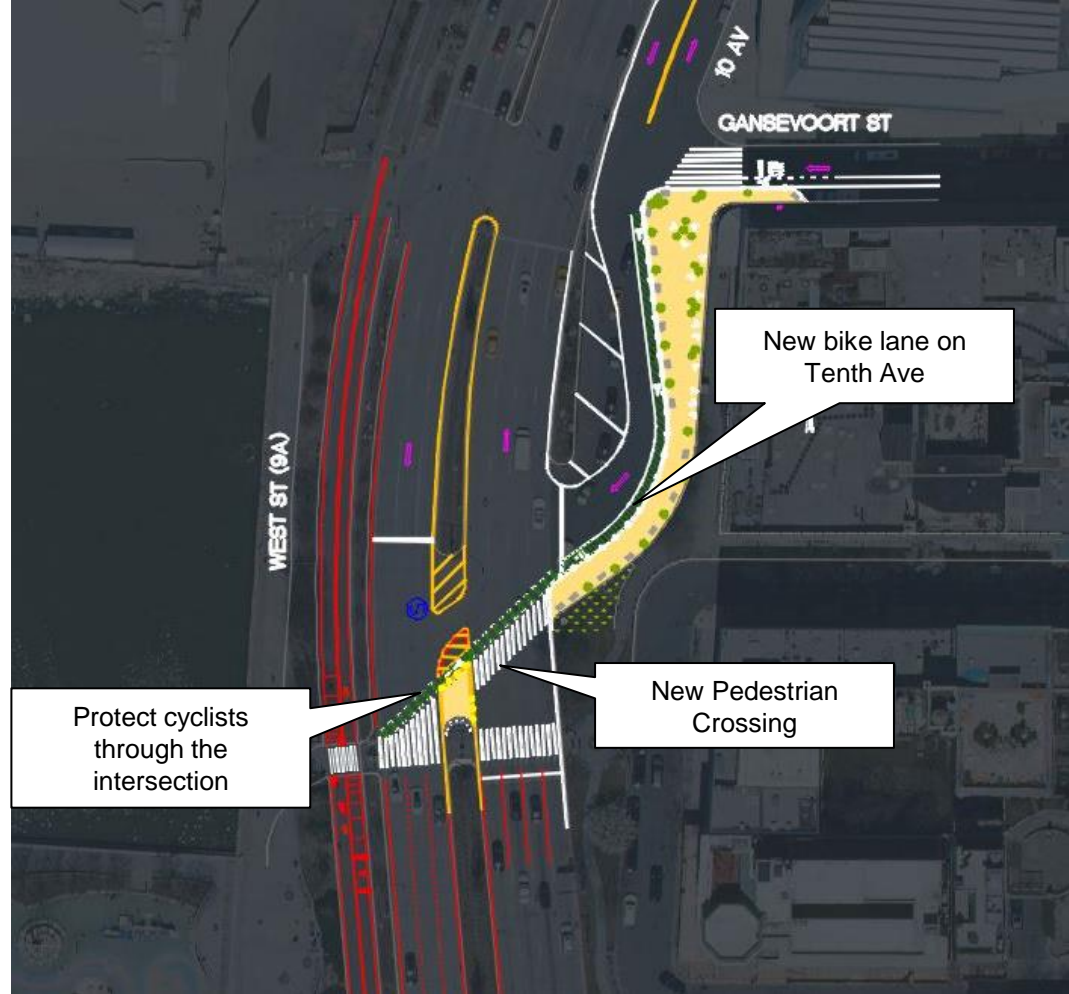


Design Proposal

Public Space + Circulation Benefits

- Create new public space connecting the Meat Packing District to the waterfront
- Activate underutilized space
- Connect cyclists from Gansevoort to the Greenway
- Create a new crossing for pedestrians

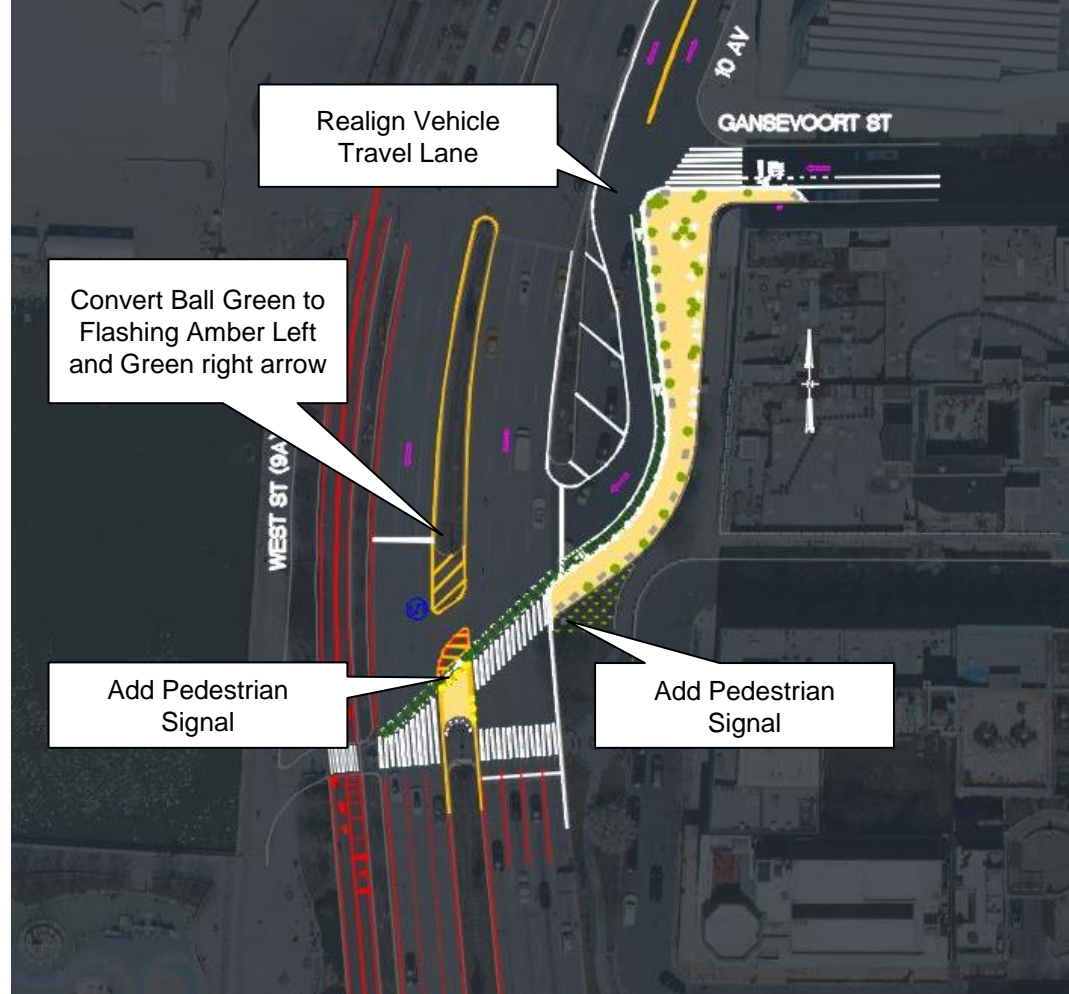
*Signals configuration pending analysis



Design Proposal

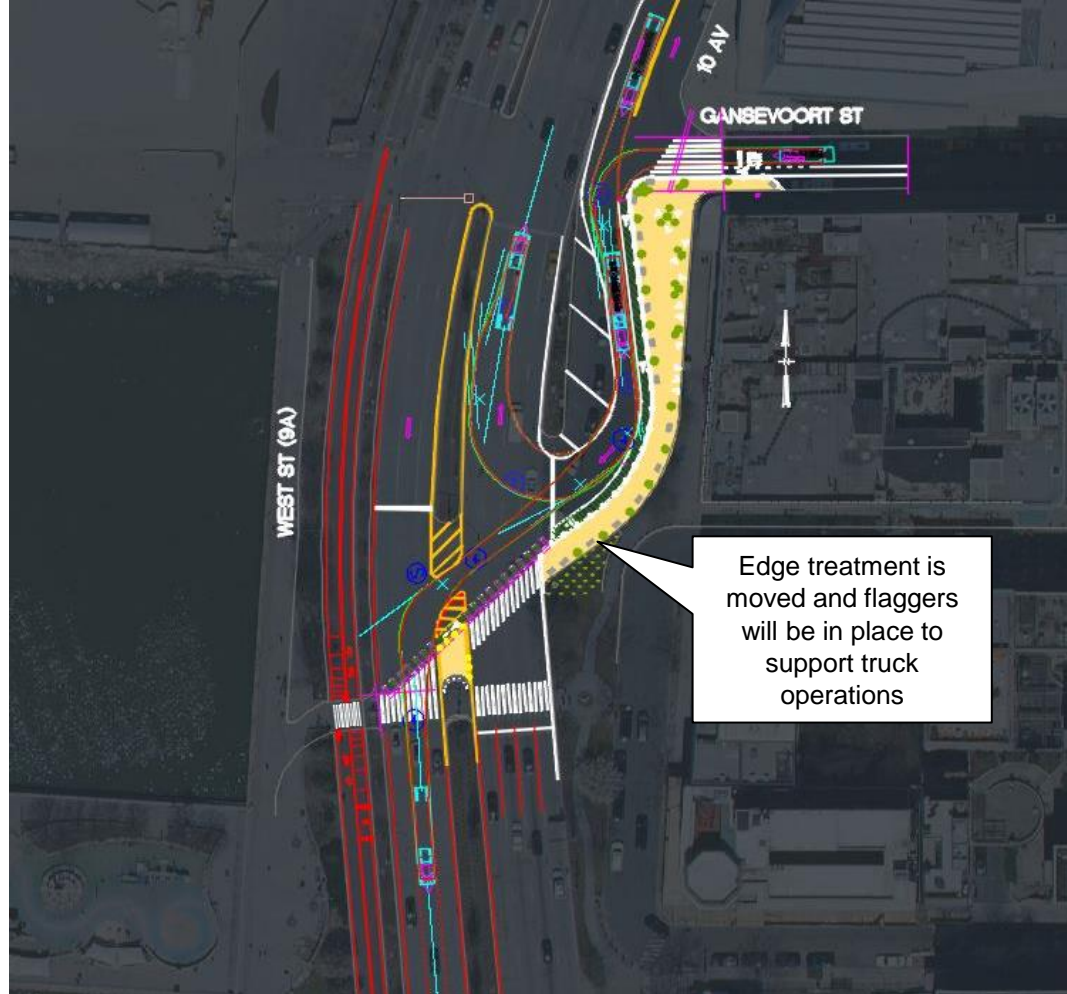
Safety Benefits

- Sharpen turn onto Tenth Ave
- Realign travel lane south of Gansevoort to align with southbound travel lane north of Gansevoort
- Add new signal for pedestrians crossing West Street



Coordination with the Whitney

- Maintain access for the Whitney's large art delivery trucks
- Vehicle lane accommodates turns
- Whitney will collaborate with MPD/TFC to define the design elements for the plaza

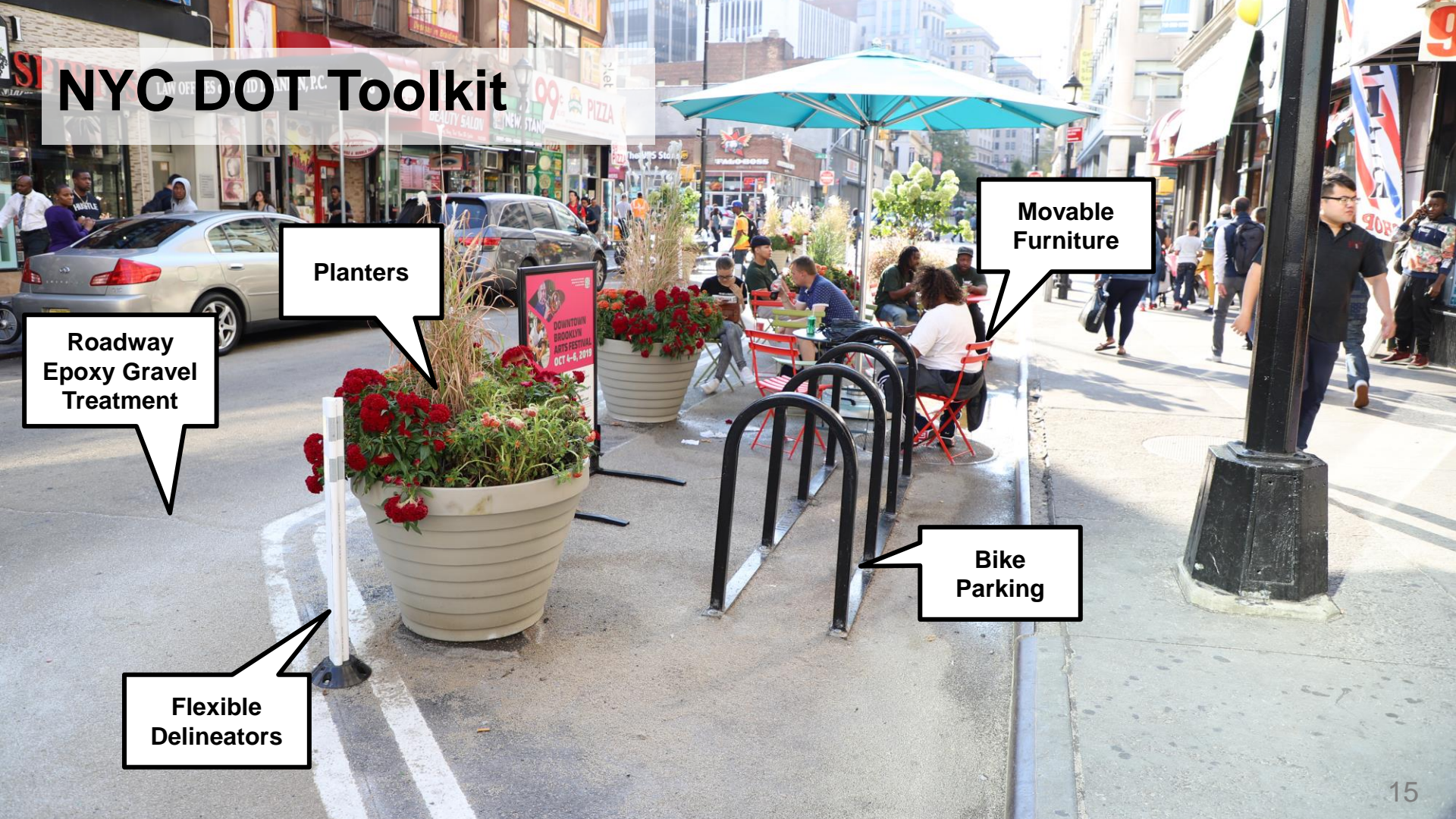


Design Proposal Implementation Coordination

- MPD/TFC to implement pedestrian space color
- MPD/TFC to supply edge objects and movable furniture
- NYC DOT to implement markings, signals, and signage changes
- MPD to take on maintenance once implementation is complete



NYC DOT Toolkit



Planters

Roadway
Epoxy Gravel
Treatment

Flexible
Delineators

Movable
Furniture

Bike
Parking

Jerome Ave Street Seat, Bronx



Union Square Plaza, Manhattan



Next Steps

**November,
2022**

Present to CB2

**Winter,
2022-2023**

**Coordinate Final Design Details
Scheduling & Notifications**

**Spring,
2023**

Implementation

Thank You!

Questions?



NYCDOT



nyc_dot



nyc_dot



NYCDOT