



10TH AVE & 11TH AVE
MCDONALD AVE TO PROSPECT PARK SOUTHWEST

School Safety Improvements
Presentation to CB 7 – June 19, 2017



PROJECT LOCATION AND BACKGROUND

PROJECT LOCATION

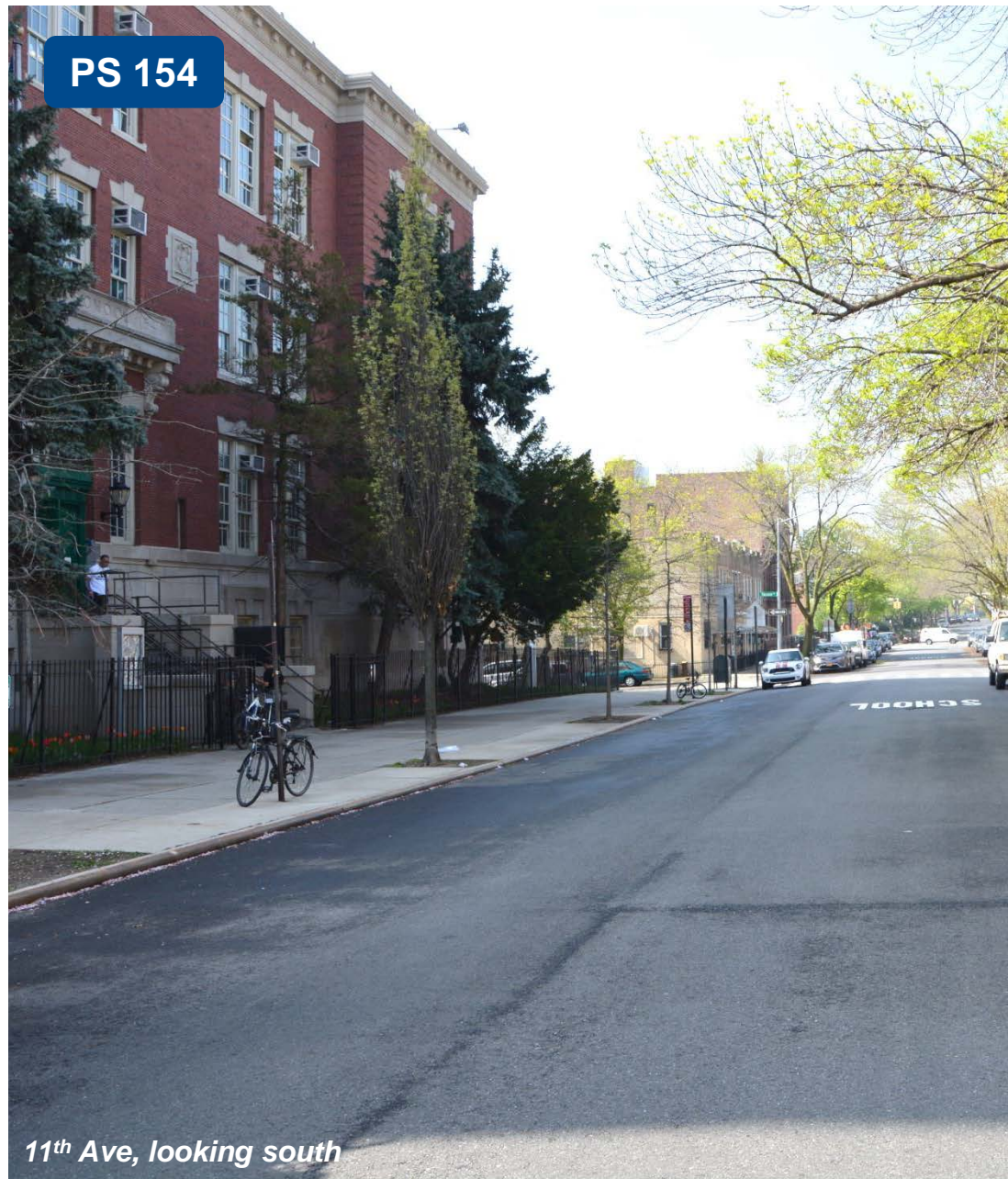
- 10th Ave (Prospect Park Southwest to 18th St)
- Terrace Pl / 11th Ave (McDonald Ave to Prospect Park Southwest)
- Project area used by students accessing PS 154 and Brooklyn Urban Garden Charter



10 AVE & 11 AVE

Background

- Request for safety improvements on 11th Ave from PS 154
- Community request for a safer crossing at 18th St and 10th Ave



EXISTING CONDITIONS

EXISTING CONDITIONS: 10TH AVE & 11TH AVE

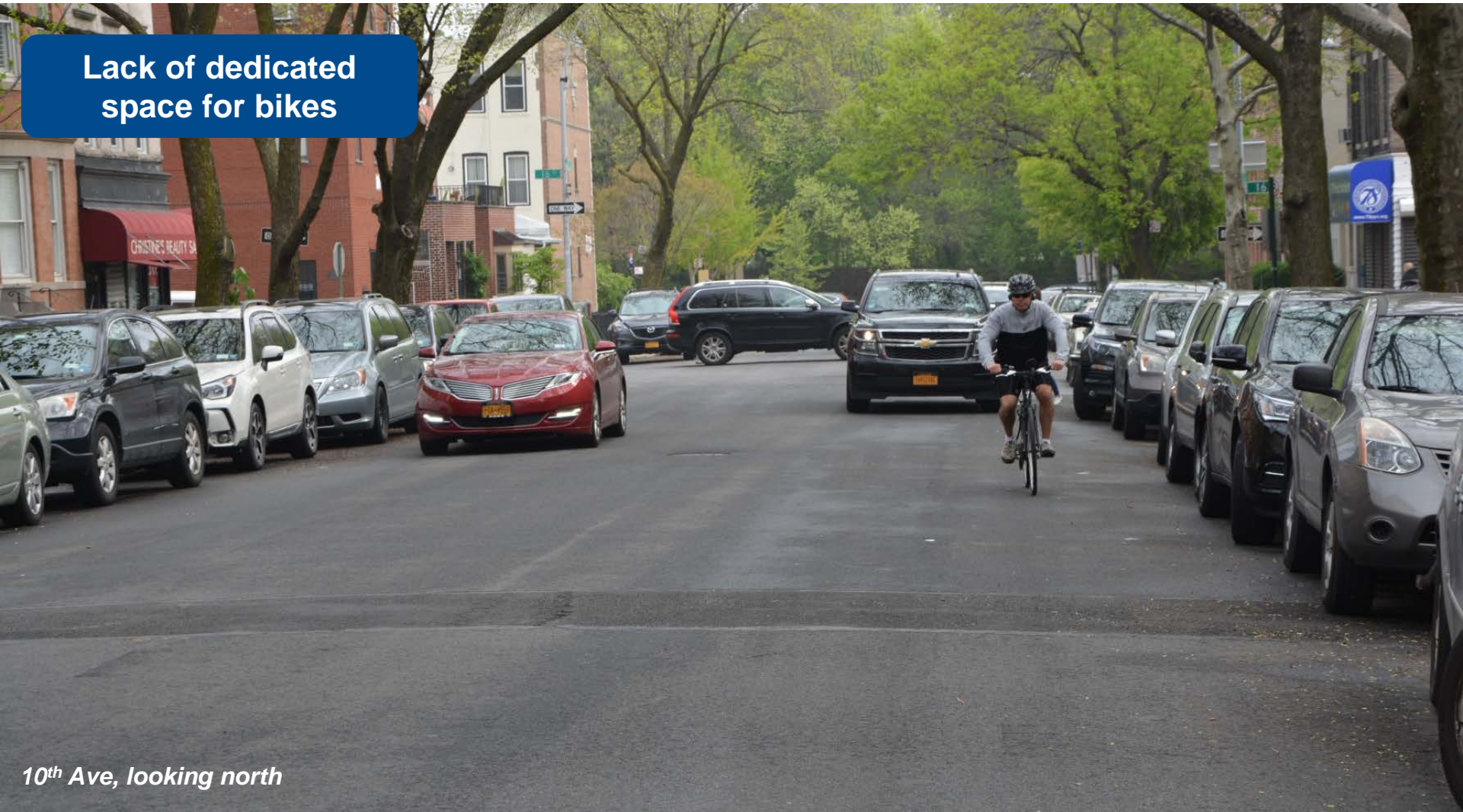
Wide roadway
encourages speeding



11th Ave, looking south

EXISTING CONDITIONS: 10TH AVE & 11TH AVE

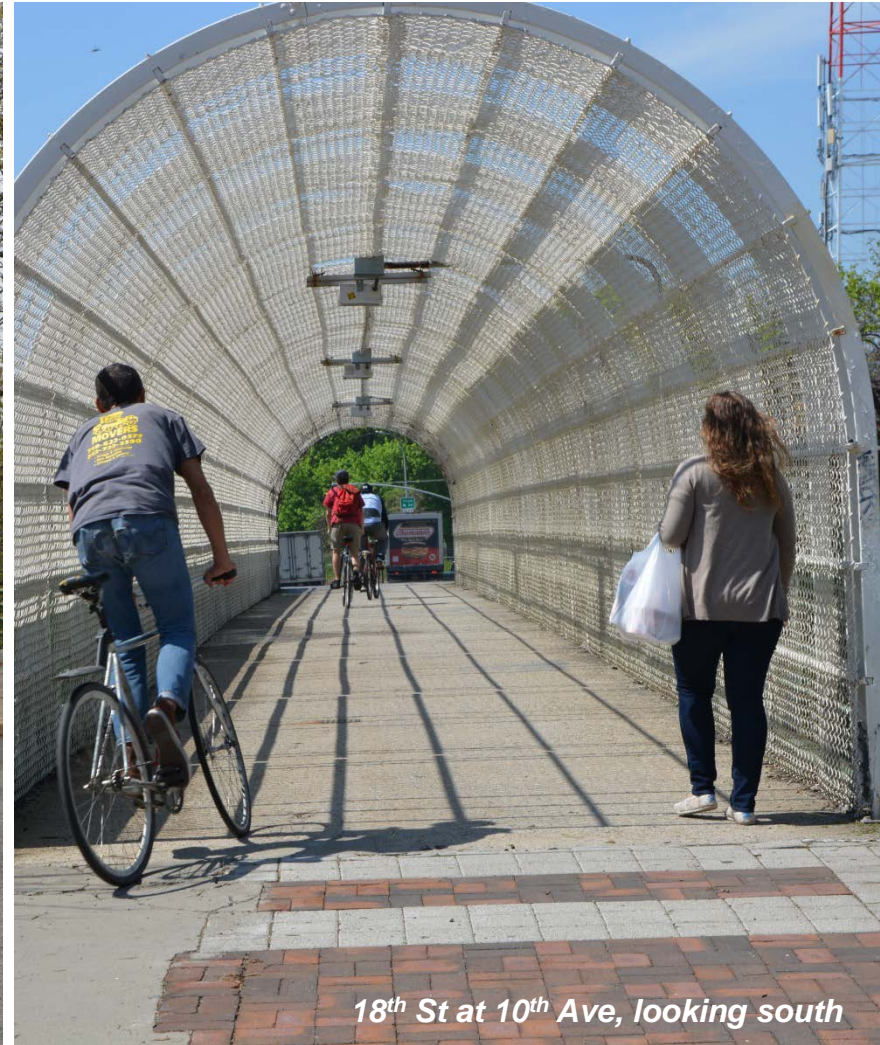
Lack of dedicated space for bikes



10th Ave, looking north

EXISTING CONDITIONS: 10TH AVE & 18TH ST

No crosswalk across 18th St to 10th Ave pedestrian bridge



EXISTING CONDITIONS: 11TH AVE & 18TH ST



Conflicting movements due to lack of lane designation

18th St at 11th Ave, looking south

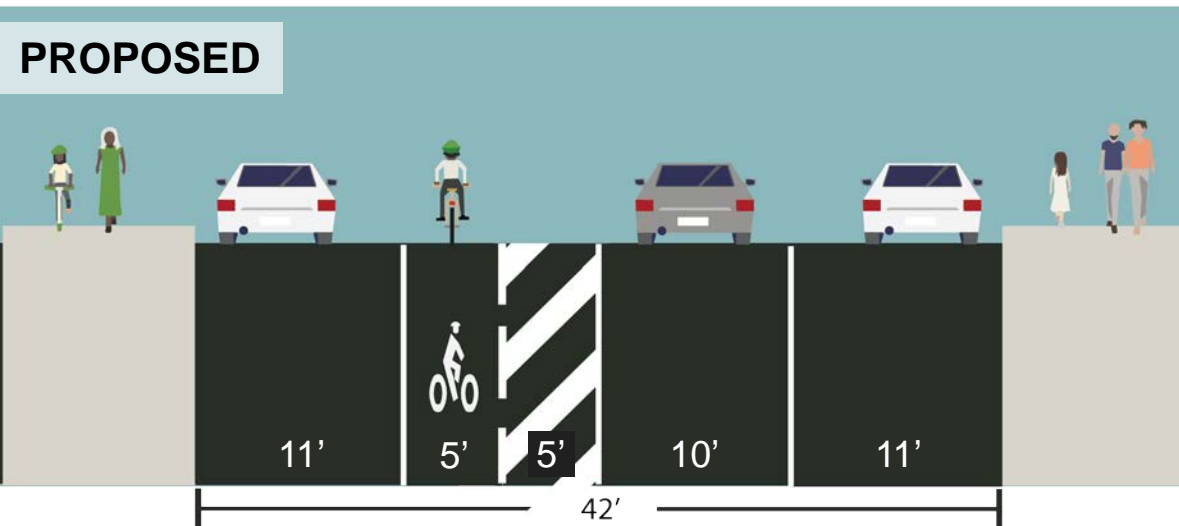
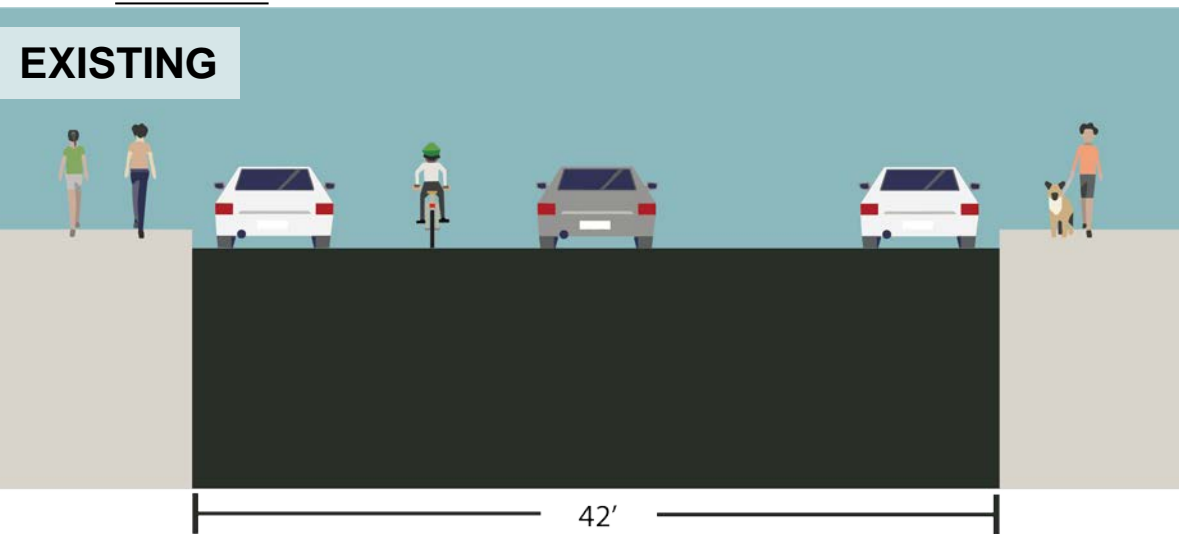
EXISTING BIKE NETWORK

LACK OF CONNECTIONS FROM WINDSOR TERRACE TO PROSPECT PARK



PROPOSAL

PROPOSAL: BUFFERED BIKE LANES

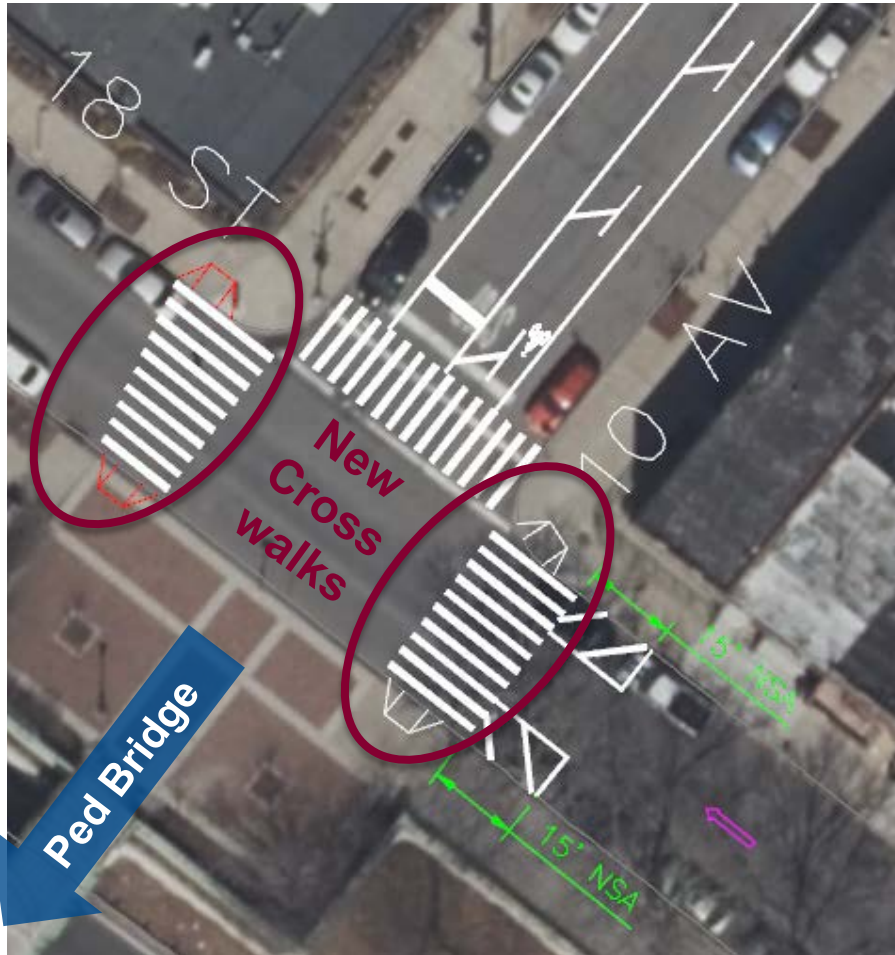


- 10th Ave (Prospect Park SW to 18th St)
- 11th Ave / Terrace Pl (McDonald Ave to Prospect Park SW)
- Narrows moving lane to standard 10 feet to reduce speeding
- Creates safe, dedicated space for cycling

EXAMPLE: LAFAYETTE AVE, BROOKLYN



PROPOSAL: ENHANCED CROSSING AT 18TH ST AND 10TH AVE



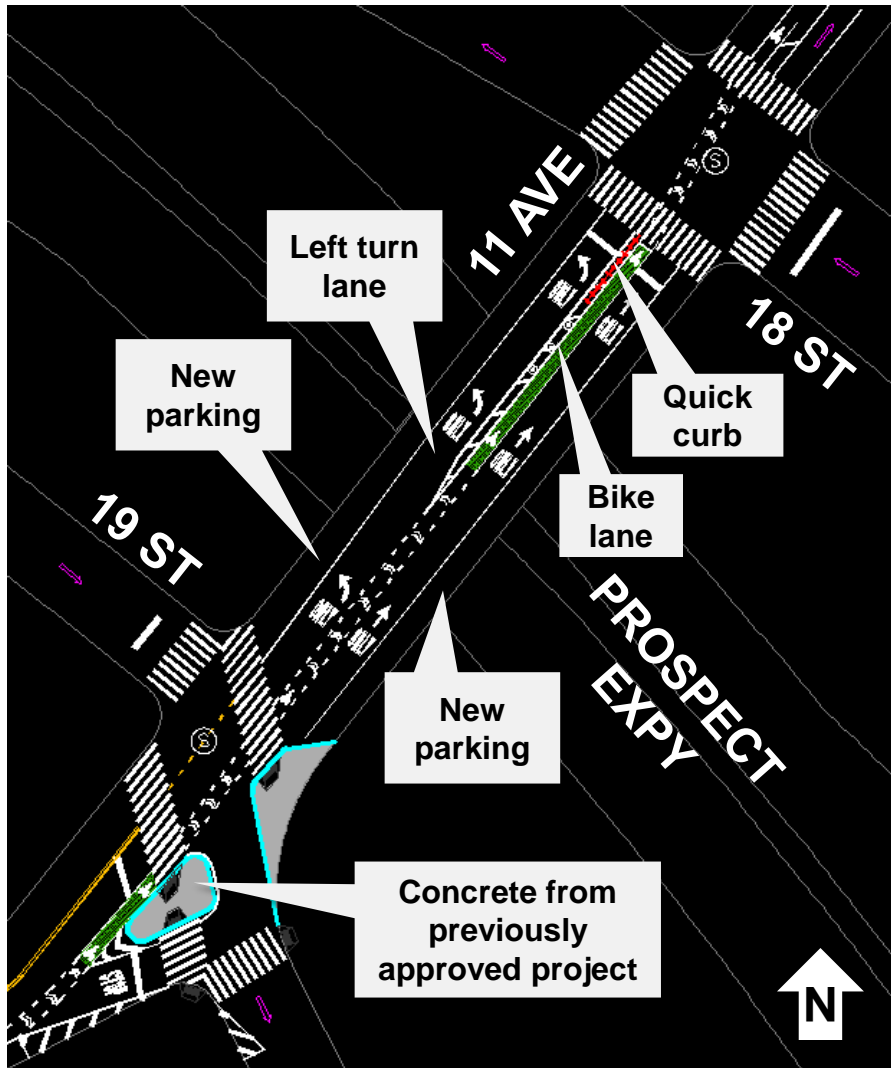
Proposed Enhanced Crossing

- Add new enhanced crossing on 18th St at 10th Ave
- Intersection does not meet federal guidelines for a new stop sign or traffic signal at this time
- Includes high visibility crosswalk, new ADA compliant pedestrian ramps, pedestrian warning signs, and 15' of daylighting at approach to improve visibility



Example: Maspeth Ave

PROPOSAL: 11TH AVE BRIDGE



Maintains elements from previously approved project:

- Concrete pedestrian island and curb extension
- New signalized crosswalk
- Left turn lane
- New parking on the bridge

Adds bike lane and additional traffic calming:

- Bike lane in center of roadway to avoid turning conflicts
- Quick curb helps protect cyclists and discourage illegal left turns from right lane



SUMMARY AND BENEFITS OF PROPOSALS

SUMMARY OF PROPOSAL

- Install buffered bike lanes on 10th Ave (Prospect Park SW to 18th St) and 11th Ave (McDonald Ave to Prospect Park SW)
- Add a new enhanced crossing on 18th St at 10th Ave
- Add lane designations to 11th Ave approaching 18th St / Prospect Expy
- In coordination with previously approved DOT project on Terrace Pl

BENEFITS OF PROPOSAL

- Calm traffic along 10th Ave and 11th Ave
- Provides safe, convenient cycling routes connecting to Prospect Park, PS 154, and Brooklyn Urban Garden Charter School
- Marks designated space for all road users
- Provides a safe pedestrian crossing to the bridge at 10th Ave and 18th St
- Improve traffic flow and reduce conflicts on 11th Ave at 18th St / Prospect Expy entrance ramp

THANK YOU!

Questions?



Contact: NYCDOT Brooklyn Borough Commissioner's Office at (646) 892 1350



NYC DOT



NYC DOT



nyc_dot



NYC DOT