

# FRIENDS OF **m a t e r i a l s** for the arts



2016  
ANNUAL  
REPORT



# OUR MISSION

Founded in 1978, Materials for the Arts (MFTA) is New York City's largest creative reuse center dedicated to supporting arts and cultural organizations. A program of the New York City Department of Cultural Affairs, and with support from the Departments of Sanitation and Education, in 2016, MFTA collected nearly two million pounds of reusable materials from businesses and individuals across the five boroughs and made them available, free of charge, to nonprofits with arts programming as well as New York City public schools and agencies.

Millions of students, choreographers, dancers, actors, set designers, art therapists, after school providers and senior citizens have been positively impacted by the work of MFTA over the years. The City of New York funds infrastructural and operational costs for MFTA and Friends of Materials for the Arts, the program's nonprofit partner, supports initiatives in the areas of education and community outreach to serve a broader audience.



# LETTER FROM THE COMMISSIONER

## Dear Friends,

It is with great pleasure that I introduce Friends of Materials for the Arts' 2016 Annual Report.

For 40 years Materials for the Arts has fueled New York City's creative community. What began in 1978 with a refrigerator donation to the Central Park Zoo (which was in dire need of a way to safely store medicines for its animals) has evolved into a collaboration among my agency and the City's Departments of Sanitation and Education that provides supplies crucial to the livelihood of thousands of artists and educators across all five boroughs.

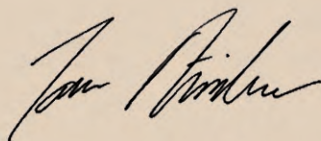
The impact of MFTA, often measured in the tonnage of materials diverted from the landfill, can also be considered by the number of cultural institutions, nonprofits, public schools, teaching artists, and social service organizations that rely on MFTA's services to advance their mission. MFTA is as beneficial to our creative community's quality of programming as it is to the bottom line. In addition to diverting 1.9 million pounds of quality goods, the value of last year's donations distributed reached a total of \$10 million in 2016.

The nonprofit partner Friends of Materials for the Arts continues to provide support for arts education in low-income, high-risk schools, free access to artmaking workshops, and a deep commitment to increasing environmental awareness. The program is as strong as it has ever been.

Every time I deliver remarks on New York City's cultural vibrancy, MFTA is always one of the programs I tout, and it's almost always the program that people want to learn more about. I look forward to working with MFTA Executive Director Harriet Taub, Friends of MFTA Board Chair Bonnie Weill, and our partner agencies to continue to this extraordinary operation.

I know you join me in excitement as we look forward to seeing all MFTA achieves in 2017.

Sincerely,



Tom Finkelpearl  
Commissioner  
NYC Department of Cultural Affairs





# LETTER FROM HARRIET TAUB & BONNIE WEISSBLATT WEILL



## Dear Friends,

Back in 2002 when Friends of Materials for the Arts was created, our goals were pretty simple. We wanted to have a mechanism in place so we could raise funds for our fledgling education program. We knew it was important for us to have our own identity for fundraising and our own 501c3 would enable us to bring together a board of industry leaders and engaged individuals who shared our mission.

Fifteen years later, we can heartily say, mission accomplished! Friends of Materials for the Arts has grown significantly since those early years and as you will see in this report, our work has expanded to serve many different constituencies. The mission however, remains the same - we help to advance the work of Materials for the Arts through education, volunteerism and community engagement.

This past year we have expanded our volunteer program to more corporate groups. Our work in schools continues to engage both students and school leaders and we have honed our partnership with the Departments of Sanitation and Education through the Office of Sustainability, the Office of STEM Education and even the Office of Early Childhood. The Artist in Residence Program attracts successful and highly respected artists like Jean Shin and Michael Kelly Williams and our partnership with institutions like The Metropolitan Museum of Art helps to cement our value in the NYC arts and cultural landscape.

We want to take this opportunity to thank each and every one of our supporters, funders and friends for helping us reach our goals and set higher and higher expectations for the important work we do.

Harriet Taub  
Executive Director

Bonnie Weissblatt Weill  
Chairman of the Board



# THE YEAR THAT WAS



## RECEIVE

## DONATE

# 5



## LEARN

## VOLUNTEER

# 18



# 2

## SUSTAIN

# RECEIVE




In 2016,  
**2,218** member  
organizations visited  
the warehouse  
**6,462** times to pick  
up supplies valued  
at more than  
**\$10 million.**

MFTA remains the largest  
provider of free materials  
to New York City public  
schools. In 2016, **nearly  
half of all DOE schools**  
visited MFTA for supplies.







“ On behalf of my clients, I would like to take a moment to thank you so much for your generous donation to MFTA which allowed the art therapy program at my agency to have an abundance of activities and projects to choose from for the first time! Our clients thoroughly enjoyed the experience of working with new materials and we cannot thank you enough. They will continue to be able to benefit from these materials for months to come. We are overwhelmed with the project ideas that are unfolding as a result of the materials we received! ”

Rachel Heyman, LCSW

Site Administrator, the Center for Comprehensive Health Practice



# OUR RECIPIENTS IN 2016

## CITY AGENCIES

Mayor's Office of Special Projects &  
Community Events  
NYC Administration for Children Services  
(ACS) - Division of Youth & Family Justice  
NYC Dept. of Corrections  
NYC Dept. of Environmental Protection  
NYC Dept. of Homeless Services  
NYC Dept. of Sanitation  
NYC Housing Authority

## SOCIAL SERVICE ORGANIZATIONS

ANIBIC (Association for Neurologically  
Impaired Brain Injured Children)  
Camp Felix of the New York Foundling  
Center for Family Life in Sunset Park  
(St Christopher-Ottillie SCO)  
Coalition for Hispanic Family Services  
Community Association of Progressive  
Dominicans - After School Program  
Council of Jewish Emigre Community  
Organizations - COJECO  
East New York United Concerned Citizens, Inc.  
(Arts & Craft Senior Impact Partnership  
Program)  
Edwin Gould Services for Children and  
Families / Steps to End Family Violence  
El Puente Inc. Beacon Program @ M.S. 50  
Girls for Gender Equity  
Greenwich House  
Greenwich Village Youth Council  
HeartShare Human Services of New York -  
Bensonhurst Family Services  
Henry Street Settlement

Hondurans Against AIDS, Inc. -  
"Garifuna Kids Doing Arts"  
Hudson Guild - Youth Development  
Department  
IAHD/The Institutes of Applied Human  
Dynamics, Inc. - NYC (Adult Day  
Habilitation)  
Italian American Civil Rights League  
Kips Bay Boys & Girls Club - Castle Hill  
New York Asian Women's Center  
(Art Therapy Support Group)  
Rockaway Waterfront Alliance, Inc.  
SCO Family of Services - Flushing Avenue  
Family Residence / After-School Program  
Southern Queens Park Association NY  
(SQPA-NY) - Art Program Initiatives  
Special Citizens Futures Unlimited -  
(Bronx Day Habilitation Program)  
Stanley M Isaacs Neighborhood Center  
The Ali Forney Center (Arts Programming)  
The Boys' Club of New York, Inc. - Abbe  
Clubhouse  
Variety Boys & Girls Club of Queens, Inc  
Voces Latinas  
YAI-National Institute for People with  
Disabilities  
YMCA Flushing Branch




## CULTURAL ORGANIZATIONS

Abrons Arts Center  
 AbunDance Academy of the Arts  
 Afro-Asian, Inc.  
 Alwan for the Arts  
 American Indian Community House  
 Gallery/Museum  
 Asian American Women Artists Alliance  
 Astoria Performing Arts Center  
 Ballet Hispanico of New York  
 Bronx Opera Company  
 Brooklyn Arts Council (BAC)  
 Brooklyn Youth Chorus  
 Castillo Theatre  
 Center for Traditional Music and Dance  
 Cinereach  
 Circle in the Square Theatre School  
 Creative Time  
 Dance Parade, Inc. - New York  
 Death By Audio Inc.  
 Dixon Place  
 Drama of Works  
 DZIECI  
 East River Ensemble, Inc.  
 Edible Schoolyard NYC  
 Elevator Repair Service Theater  
 Figment Project Inc.  
 Firebone Theatre  
 Flea Theater  
 Foresight Films  
 Free Arts NYC  
 Friends of Van Cortlandt Park  
 Gingerbread Players of Saint Luke  
 Harlem Arts Alliance  
 Hudson Guild Theatre  
 Ifetayo Cultural Arts Facility  
 INTAR - Hispanic American Arts Center  
 Irondale Ensemble Project  
 Jose Limon Dance Foundation  
 Kentler International Drawing Space

LaMicro Theater Inc.  
 Lar Lubovitch Dance Company  
 Long Island City Ballet Inc.  
 Los Pleneros de la 21  
 Man Chee Dramatic and Benevolent  
 Association  
 Medicine Show Theatre Ensemble  
 Milarepa Children's Theater and Chorus  
 Moose Hall Theatre Company  
 Mount Vernon Hotel Museum & Garden  
 Museum of the Moving Image  
 National Asian American Theatre Co.  
 National Academy Museum  
 National Museum of the American Indian  
 Negro Ensemble Company  
 New York Shakespeare Exchange  
 New York Women in Film and Television  
 Old Stone House of Brooklyn  
 Opera Pomme Rouge  
 Park Avenue Armory  
 Public Theater New York Shakespeare Festival  
 Queens Hispanic Parade Inc.  
 Radio Diaries  
 Riverdale Children's Theatre  
 Russian American Cultural Center  
 Saint Ann Center for Restoration & the Arts  
 (Arts at St Ann's)  
 Salvatore LaRussa Dance Co, Inc.  
 Society of Illustrators  
 Studio Museum in Harlem  
 Symphony Space  
 Target Margin Theater  
 The Fantastic Experimental Latino Theater Inc.  
 The Harlem Swing Dance Society  
 The Isamu Noguchi Foundation and Garden  
 Museum  
 The Lowline  
 Ukrainian Museum  
 Unity Stage Company  
 Urban Word NYC  
 WaxFactory  
 Weeksville Heritage Center

# D O N A T E

MFTA continues to provide a vital service to the public by making it possible for individuals and businesses to reallocate supplies and donate them to members of the creative and academic communities.

A dark silhouette of the state of Massachusetts is shown. Overlaid on the map is the text '1.9 MILLION POUNDS of materials in 2016' in a green, bold, sans-serif font. The text is arranged in four lines: '1.9 MILLION', 'POUNDS', 'of materials in', and '2016'.

**1.9 MILLION  
POUNDS  
of materials in  
2016**



In 2016, **1,682** businesses and individuals donated **1.9 million pounds** of materials to MFTA.



# DONOR HIGHLIGHT

# SONY

Beginning in July of 2015, MFTA staff began to work with Sony to help coordinate a move out of their Madison Avenue headquarters to a new building across from Madison Square Park. Overall, 166 tons of furniture, office supplies, lighting and office plants were diverted from the landfill. With support from the City of New York and private funders, MFTA was able to receive a total of 109 truckloads of donated materials from Sony, and redistribute them to hundreds of public schools, arts and community nonprofits and City Agencies including the Depts of Sanitation, Corrections, Environmental Protection, Parks & Recreation and Hunter College.



“ We’ve been a proud partner of Materials for the Arts for more than 10 years. In 2015, when we were preparing a move of our U.S. headquarters, we made a conscious effort to reduce our environmental footprint, minimize disruption to the local neighborhood, and give back to the surrounding community. With that in mind, we worked with MFTA to arrange for the large scale donation of file folders, paper, office supplies, equipment and furniture from our 815,000 sq. ft. building and the adjacent 14,000 sq. ft. Sony Wonder Technology Lab. As a longtime donor to MFTA, we knew we could give these items a second life by offering them at no charge to teachers at ALL of New York City’s 1,800 public schools, at thousands of local community-based organizations, and a number of City agencies.

Materials for the Arts is a superb organization. We wholeheartedly value the relationship that has been built and are excited by what is yet to come of it.”

---

Erin Amaty

Senior Coordinator, Corporate Communications & Corporate Programs and Initiatives  
Sony Corporation of America

# THANK YOU TO OUR MATERIAL DONORS IN 2016

## ARTS & DESIGN

360 Design Events, Ltd.  
American Bard Theater Company  
American Dance Guild  
Aperture Foundation  
Appraisers Association of America, Inc.  
Bernard Tschumi Architects  
Brian Brooks Moving Company  
Bronx Opera Company  
Brooklyn Youth Chorus  
CEC ArtsLink  
Center for Urban Pedagogy  
Chamber Music Society of Lincoln Center  
City Center 55th Street Theatre Foundation  
Creative Time  
David Reinhard Events  
David Stark  
Diane Villani Editions  
Emily Mason Studio  
Ferguson & Shamamian Architects, LLP  
Fine Arts Furniture  
Galerie Lelong  
Hargreaves Jones Landscape Architecture DPC  
International Print Center New York  
Jim Henson Productions  
Laban/Bartenieff Institute of Movement Studies  
Laguardia.Low Architects  
Lehmann Maupin LLC  
Manzanares Furniture Corp  
Michael Van Valkenburgh Associates, Inc.  
MoMA PSI  
Nancy Rosen Inc.  
New York Philharmonic  
Onassis Foundation USA  
Opera Pomme Rouge  
Public Theater New York Shakespeare Festival  
Queens Historical Society

Sarah Sze Studio Inc  
School of Visual Arts  
Sharon Engineering PC  
Sheri Manson LLC  
Snug Harbor Cultural Center  
Studio Libeskind  
The Caribbean Cultural Center African  
Diaspora Institute  
The Metropolitan Museum of Art Digital  
Department  
The Mexican Cultural Institute of New York  
The Moth  
The Pearl Theatre Company  
The Sam Glankoff Collection LLC  
Tibor de Nagy Gallery  
Trisha Brown Dance Company  
Willco Fine Art  
World Music Institute

## MEDIA & TECHNOLOGY

Abrams The Art of Books  
CBS Television Productions  
Chelsea Television Studios  
Epoch Films  
HBO  
Jim Gaffigan Show  
New York Public Radio  
Patron Technology  
Possible Productions - "The Affair" Showtime  
Quantico  
Regina Ryan Publishing Enterprises, Inc.  
Storyville Entertainment Inc.  
The Americans-tvm Production  
The Webby Awards  
Viacom

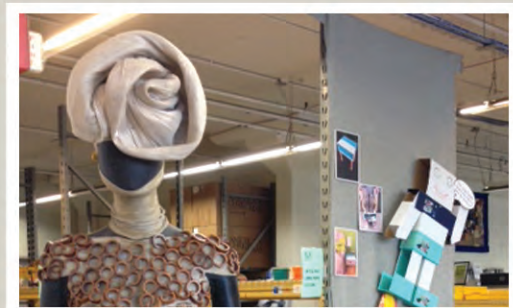
## CORPORATE & FINANCE

Boothbay Fund Management  
Booz & Company  
Broad Street Development  
Great Forest  
Guggenheim Partners  
Hanseatic Corporation  
Hereford Insurance Company  
Insignia-BNT National Title Agency  
Kiehl's Since 1851  
Law Offices of Gary Fields PLLC  
Law Offices of Neal Rosenberg  
Liz Robbins Associates  
McKinsey & Company  
MNM Ventures LLC  
Moody's Corporation  
Moon Capital Management  
Next Level Practice Management, LLC  
Platinum Properties  
Precise Leads  
Rosewood Investment Corporation  
The Chanin Building  
Tremblant Capital  
Weil, Gotshal & Manges LLP

## RETAIL & FASHION

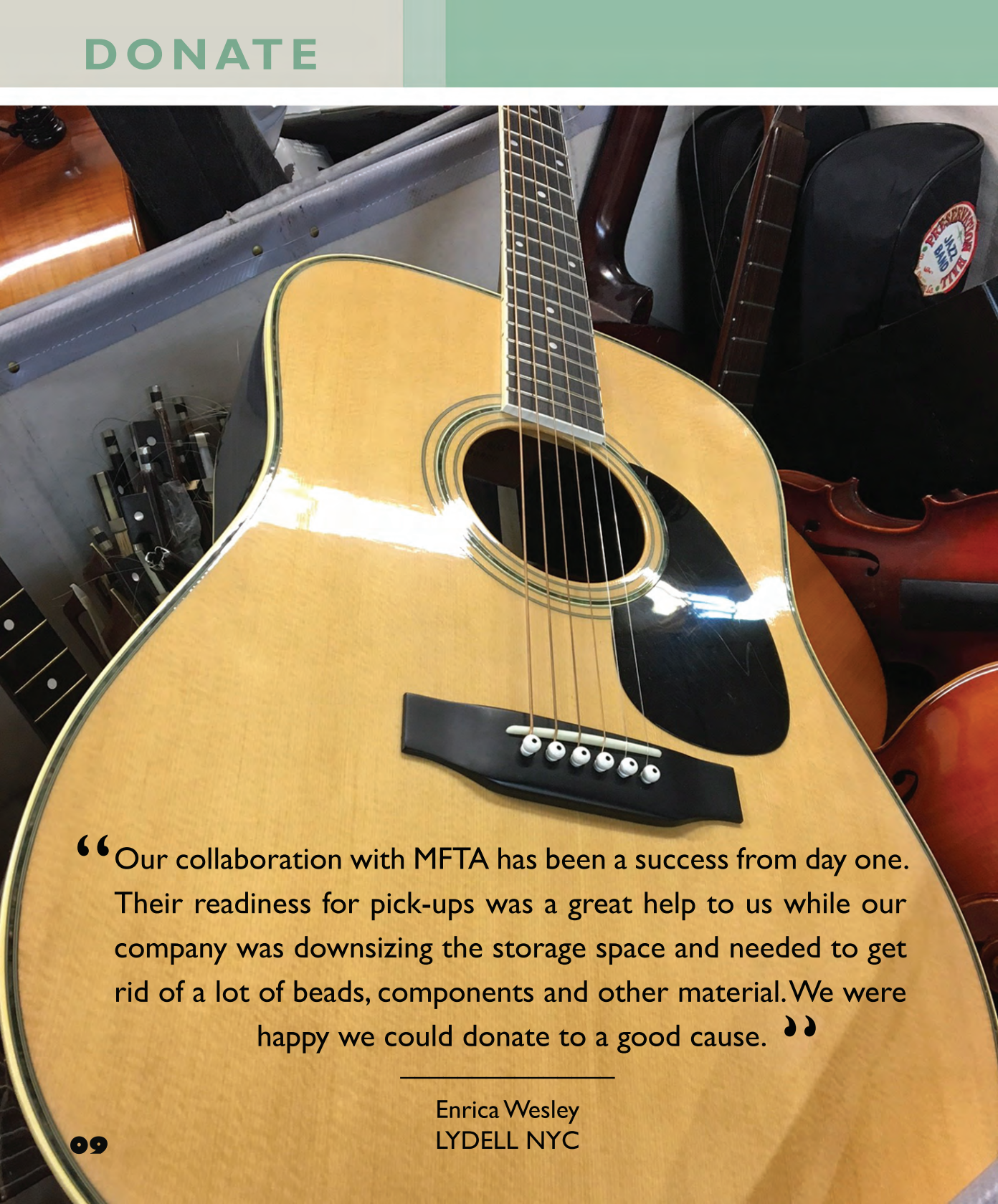
A D Die Cutting and Finishing  
Aeropostale  
Ann Taylor, Inc.  
Armani Exchange Corp  
Arnold S. Levine, Inc.  
Avon Decorators  
B. Side Swimwear  
Bark Box  
Bergdorf Goodman, Inc.  
Bloomingdales  
Casper Sleep  
Coach, Inc.

Cole Haan  
Dirty Librarian Chains  
EVP Carol Dauplaise Jewelry  
Gaynor Minden, Inc.  
Helmut Lang  
Jack Loconsolo & Company  
Joe Fresh  
K.I.D.S./Fashion Delivers  
Lands End  
Lees Art Shop Inc.  
Lydell NYC  
M & J Trimming  
Macy's East  
One Kings Lane  
Opening Ceremony  
Orchard Jewelry  
Oscar De La Renta  
Pantone  
Patricia Maxwell  
Perry Ellis International  
Proenza Schouler  
Robert Mackie Unlimited  
Saks Fifth Avenue  
Samuel & Sons  
Scott Adam Designs  
Sequential Brands Group  
Steiner Paper Corporation  
Thom Browne Inc.  
Tiffany & Company  
Wacoal America  
Wendy Mink Jewelry Inc.





# DONATE



“Our collaboration with MFTA has been a success from day one. Their readiness for pick-ups was a great help to us while our company was downsizing the storage space and needed to get rid of a lot of beads, components and other material. We were happy we could donate to a good cause. ”

---

Enrica Wesley  
LYDELL NYC



# MFTA RECOGNIZED BY THE US ENVIRONMENTAL PROTECTION AGENCY

We were honored to receive the Region 2, Environmental Champions Award for public health and environmental excellence from the EPA. The Award was presented by EPA Regional Administrator Judith Enck.



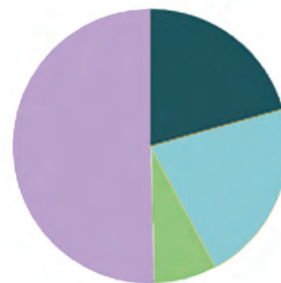
L to R: New York Harbor School Founder Murray Fisher, MFTA Communications Coordinator Kwame Belle, MFTA Executive Director Harriet Taub, NYC Department of Cultural Affairs Commissioner Tom Finkelpearl, EPA Regional Administrator Judith Enck

# LEARN



Education about creative reuse should be available for all. Our Free Field Trip program offers students and teachers that represent low-income and underserved communities the opportunity to participate in our programs at no cost.

**The majority of the 120 schools benefiting from this program are located in the boroughs outside of Manhattan.**



■ Bronx (20.66%) ■ Brooklyn (21.49%) ■ Manhattan (7.44%)  
■ Queens (50.41%) ■ Staten Island (0%)



MFTA offered 9 in-school residencies that ran throughout the 2015-2016 school year. Our success implementing these in-school programs was captured in “Creative Reuse in the Classroom,” a short documentary which was screened at HBO’s in-house theater in June 2016.

To watch the film, visit:  
[materialsforthearts.org/explore/mftatv/](http://materialsforthearts.org/explore/mftatv/)



**Of the 220 FIELD TRIPS in  
2016, 120 were free for Title  
I schools.**



“It was engaging, connected to our curriculum, and students have a project to share with family at home.”

Diana Bramante  
Elementary Teacher, NYC DOE Q316





For educators across the City, MFTA's professional development courses reinforce the many ways to utilize creative reuse in their classrooms. Each course focuses on sustainable hands-on projects made of reusable materials that can be incorporated into a teacher's classroom curriculum.

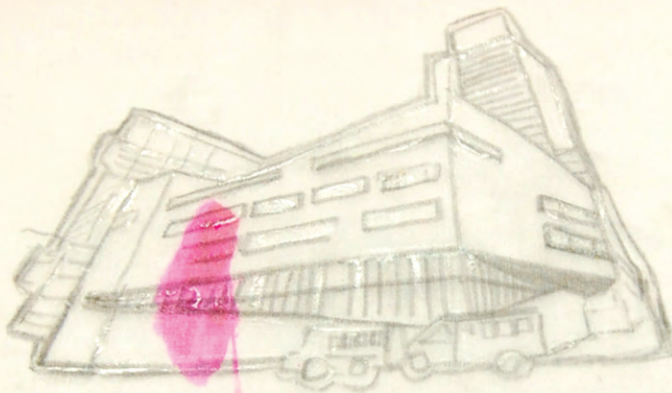
NYC DOE's After School Professional Development Program Credits can be earned through these courses.



“No longer will my students throw away materials that we can use again. Also, my students now can look at unconventional materials in unique and different ways! ”

---

Gwynn White  
Librarian, NYC DOE K005



The Riverview School

Q277

Where Anything is Possible!



# GALLERY



The MFTA GALLERY showcases work by artists, teachers and MFTA recipient organizations year-round. A gallery visit is included in every MFTA school field trip. The gallery is visited by 16,000 people throughout the year, 5,600 of which are students.







Work in the gallery is seen by thousands of arts professionals, educators and students who visit MFTA for supplies as well as members of the public who attend special events, opening receptions, and monthly **Third Thursday Artist Workshops.**

The gallery makes it possible to attract artistic talent to participate in the **Artist-in-Residence** and **Third Thursday Artist Workshop** programming. It also provides the opportunity to educate visitors about what can be created by repurposing materials.

MFTA hosted two resident artists in 2016: Jean Shin and Michael Kelly Williams.



# VOLUNTEER

Where would we be without our volunteers? This wonderful group of New Yorkers helps us organize materials on our shelves, assists at our events and creates samples of art work made out of the wild and wacky materials from the warehouse. We are so grateful for their efforts on our behalf. With a small staff, a huge warehouse and daily donations, we can't thank our volunteers enough. It wouldn't be possible to do what we do without them.



**81** Volunteers every week

**731** Total Volunteers in 2016

**7,712** Total Volunteer hours



# OUR VOLUNTEERS IN 2016

## CORPORATE VOLUNTEER GROUPS

Addison  
Adobe  
Akerman LLP  
Bloomberg  
The Estée Lauder  
Companies Inc.  
HBO  
JetBlue  
Lyft  
Morgan Stanley  
New York Cares  
Nielsen  
Poppin  
Ralph Lauren  
Sony  
Target

## NON-CORPORATE VOLUNTEER GROUPS

Adelphi University  
AHRC- ADS Day Hab w/o Walls  
AHRC- Weinberg Adult Day Center  
Berkley College  
Build on  
Chess-In -Schools  
Gateway Counseling Center  
w/o Brooklyn  
Goodwill Industries  
Job Path  
Network of Sherpa Students and  
Professionals  
Queens College Lacrosse  
Safe Space  
Street Squash  
The Baccalaureate School for Global  
Education "Helping Hands Committee"  
Trevor Day School  
YAI

## INDIVIDUAL VOLUNTEERS

Arlene Fama  
Chris Hill  
David Salvagione  
Edwin Ortiz  
Hannah Li  
Horacio Trujillo  
Jacob Waltuck  
Julia Clauss  
Julia Mucci  
Lidia Mayen  
Nay Myint  
Rita Donohue  
Stella Belikiewicz  
Theresa Benedetti







“ Volunteering with Materials for the Arts checks all the boxes for our group. We’re supporting sustainability, education and arts all at once! It’s such a hands-on (and totally fun) experience each time we enter the warehouse. ”

---

Eddie Jones  
Manager SOC Programs  
JetBlue



# S U S T A I N



THANK YOU  
TO OUR  
2016  
SUPPORTERS



On October 27, 2016, Friends of Materials for the Arts held our annual fundraiser, the Masked Marvelous Cocktail Party which raised over \$100,000. We were thrilled to celebrate with all of our supporters and recipients and welcomed special guest, actor Stephen Lang as our Master of Ceremonies.



## MASKED MARVELOUS COCKTAIL PARTY



# THANK YOU TO OUR SUPPORTERS IN 2016

## DIRECTOR'S CIRCLE (20K+)

Lulu & Leo Fund  
PreK:Mayor's Fund  
Sony USA  
The Korein Foundation  
Anonymous

## BENEFACTOR (10K+)

A G Fund  
Bloomberg Philanthropies  
Bobbie Braun  
JetBlue Airways  
New York State Council  
on the Arts  
The Glenmede Trust Company  
The Shelley & Donald Rubin  
Foundation

## PATRON (5K+)

Bonnie & Doug Weill  
Con Edison  
Durst Organization  
Emily Hall Tremain Foundation  
Judy & Kim Davis  
Laurie M.Tisch Illumination Fund  
Milton & Sally Avery Arts  
Foundation  
Participatory Safety, Inc.  
The Estée Lauder Companies Inc.  
Liman Foundation

## ADVOCATE (2,500+)

Barb & Jim Korein  
Davis Charitable Trust  
Garment District Alliance

## Jolie Schwab & David Hodes

Lynn & Ralph Huber  
NYC Center for Materials  
Reuse  
Sara & Axel Schupf  
TD Bank  
Vornado Realty Trust

## SUPPORTER (1,000+)

Adobe  
Agnes Budzyn & Han Yik  
Akerman LLP  
American Eagle Outfitters  
Foundation  
Aronson's Inc.  
Cummings & Lockwood  
Eileen Fisher  
Ellen Weiman & Dubi  
Silverstein  
Elysabeth Kleinhans  
Felecia Webb  
Hanky Panky  
Hanseatic Corporation  
HBO  
Judy Francis Zankel  
Karin Fisch & Mark Gardy  
Mathis Pfohl Foundation  
Pamit Surana  
Sarah Vigoda  
Scott Resnick  
Signature Bank  
Staples Foundation  
Target Corporation  
ZipCar

## FRIEND (500+)

Anelle Miller  
Capital One  
Claire Carter & Peter Gould  
Cole Haan  
Harriet Taub & Harry Kafka  
Janet Harris  
Joe Sultan & Sandy Chilewich  
Josephine Thomas  
Laura & Benjamin Friedman  
Lavori Sterling Foundation  
LeeAnn & Peter Jacobs  
Lisa & Andy Lerner  
Marina Mata & Dominik Rohe  
Marjorie Vandow & Richard  
Fields  
Mimi & Paul Iams  
Sarah Kafka and Jonathan  
Tarshis Neil  
Silvercup Studios  
Stacy & John Peebles  
Steffi & Phil Green  
Stephanie & Robert Olmsted  
Sue Ellen & Bob Schneider  
Tattly Temporary Tattoos  
The Pollan Family Table: Corky,  
Lori, Dana, and Tracy Pollan  
with Michael Pollan  
Vivian Mamelak & Alain Demers  
Yahkeema Moffitt & Inbar  
Soffer Sharon  
Yolanda Shashaty & George  
Singly

# THANK YOU TO OUR IN-KIND DONORS IN 2016



**360 DESIGN**  
BY MATTHEW DAVID

**TATTLY™**

DESIGN TEMPORARY TATTOOS



*Perpetuate Better Living*



**DARK  
HORSE™**



**KING OF FALAFEL**  
  
**& SHAWARMA**

**SCHOOL  
of  
ROCK**  
THE MUSICAL



On April 22, 2016, model and environmental activist Cameron Russell invited her friends to Materials for the Arts to learn about the fashion industry's role in the future of sustainability. Focused on how reuse can shape the environmental movement, Russell and friends explored some of the materials donated to MFTA by fashion companies. Through posts on Instagram using the hashtag [#EarthDayinFashion](#), these model activists spread the word about MFTA.

# EARTH DAY IN FASHION



# FRIENDS OF MATERIALS FOR THE ARTS

## BOARD OF DIRECTORS

Bonnie Weissblatt Weill, *Chairman*

Anelle Miller, *Vice Chair*

Barbara Korein, *Secretary*

Andrew Seiken, *Treasurer*

Barbara Braun

Lynn L. Huber

Andrew Mellen

Scott A. Resnick

Andrea M. Schaffer

Yolanda Shashaty

Samit Shah

Pamit Surana

Han Yik



L to R: Scott Resnick, Samit Shah, Lynn Huber, Yolanda Shashaty, Barbara Korein (Secretary), Han Yik, Harriet Taub (Executive Director), Andrea Schaffer, Andrew Mellen, Bobbie Braun, Bonnie Weissblatt Weill (Chairman)

# MATERIALS FOR THE ARTS STAFF

## DIRECTOR'S OFFICE

Harriet Taub, Executive Director  
Tara Sansone, Deputy Director  
Hallie Bahn, Executive Assistant  
Yolanda Rodriguez, Office Administrator

## WAREHOUSE

Christopher Trainor, Assistant Warehouse Manager  
Dianna Mendez, Volunteer Coordinator  
Daniel Larkin, Donations Coordinator  
Jose Rosa, Warehouse Assistant  
Jonathan Valentin, Warehouse Associate  
Andres Velez-Sierra, Warehouse Associate  
Nick Duguid, Driver  
Anthony Salamone, Driver

## DEVELOPMENT & COMMUNICATIONS

Inbar Soffer Sharon, Director of Development  
Kwame Belle, Communications Coordinator

## EDUCATION

John Cloud Kaiser, Director of Education  
Omar Olivera, Education Associate  
Lanelle Pintal, Education Associate  
Joy Suarez, Master Teaching Artist

## TEACHING ARTISTS

Kate Friedman  
Edyta Halon  
Pamela Isaac  
David Marini  
Louis Miranda  
Mary O'Leary  
Avani Patel  
Mollie Roth  
Greg VandeHey





FRIENDS OF MATERIALS FOR THE ARTS, INC.

STATEMENTS OF ACTIVITIES

YEARS ENDED JUNE 30, 2016 AND 2015

	2016	2015
<b>Changes in Unrestricted Net Assets</b>		
Support and Revenue		
Contributions		
Foundations	\$ 63,600	\$ 64,500
Corporations	53,159	45,179
Individuals	33,026	12,969
Board members	31,849	45,461
Donated services and materials (Note 7)	6,286	4,364
Gross benefit income	86,517	69,674
Less: Direct benefit expenses	(18,997)	(18,137)
Workshop fees	261,350	244,902
Interest income	1,763	2,112
Miscellaneous income	-	8
	<u>518,553</u>	<u>471,032</u>
Net assets released from restrictions		
Satisfaction of time and program restrictions	<u>41,250</u>	<u>26,664</u>
Total Support and Revenue	<u>559,803</u>	<u>497,696</u>
Expenses		
Program Services	430,388	447,018
Supporting Services		
Management and general	62,033	51,688
Fundraising	<u>16,953</u>	<u>31,719</u>
Total Expenses	<u>509,374</u>	<u>530,425</u>
Increase (Decrease) in Unrestricted Net Assets	<u>50,429</u>	<u>(32,729)</u>
<b>Changes in Temporarily Restricted Net Assets</b>		
Contributions	21,000	31,250
Net assets released from restrictions	<u>(41,250)</u>	<u>(26,664)</u>
Increase (Decrease) in Temporarily Restricted Net Assets	<u>(20,250)</u>	<u>4,586</u>
Increase (decrease) in net assets	30,179	(28,143)
Net assets, beginning of year	<u>611,227</u>	<u>639,370</u>
Net Assets, End of Year	<u>\$641,406</u>	<u>\$611,227</u>

See notes to financial statements.

FRIENDS OF MATERIALS FOR THE ARTS, INC.

STATEMENTS OF CASH FLOWS

YEARS ENDED JUNE 30, 2016 AND 2015

	<u>2016</u>	<u>2015</u>
<b>Cash Flows From Operating Activities</b>		
Increase (decrease) in net assets	\$ 30,179	\$ (28,143)
Adjustments to reconcile increase (decrease) in net assets to net cash used by operating activities:		
Depreciation expense	6,198	7,885
(Increase) decrease in:		
Unconditional promises to give	(5,000)	16,700
Accounts receivable	(29,264)	(17,730)
Prepaid expenses	1,225	3,155
Increase (decrease) in:		
Accounts payable and accrued expenses	(14,510)	12,086
Deferred revenue	(11,145)	(10,075)
Net Cash Used By Operating Activities	<u>(22,317)</u>	<u>(16,122)</u>
<b>Cash Flows From Investing Activities</b>		
Purchase of certificate of deposit	(1,118)	(1,577)
Proceeds from maturity of certificate of deposit	205,298	-
Net Cash Provided (Used) By Investing Activities	<u>204,180</u>	<u>(1,577)</u>
Net increase (decrease) in cash and cash equivalents	181,863	(17,699)
Cash and cash equivalents, beginning of year	<u>370,174</u>	<u>387,873</u>
 Cash and Cash Equivalents, End of Year	 <u>\$552,037</u>	 <u>\$370,174</u>

See notes to financial statements.



# SPECIAL THANKS

## PHOTOGRAPHERS

Hallie Bahn  
Kwame Belle  
Valerie Caviness  
Marissa Conin  
Andrew Einhorn

Janelle Jones  
Barbara Korein  
Christian Miles  
Joy Suarez  
US EPA

Annual Report design & illustrations by Hallie Bahn



L to R: Ringing the closing bell at the New York Stock Exchange Lynn Huber, Omar Olivera, Kwame Belle, Bobbie Braun, Tara Sansone, Hallie Bahn, Commissioner Tom Finkelpearl, Inbar Sharon, Harriet Taub (Executive Director), Shirley Levy, Lanelle Pintal, Andres Velez-Sierra, Barbara Korein (Secretary), Dan Johnson (Treasurer)



MATERIALSFORHEARTS



MFTANYC



MFTANYC