

# Bx6 South Bronx Crosstown Select Bus Service

CB 4 Municipal Services Committee Meeting | May 4, 2016



# Agenda

- Select Bus Service overview
- Bx6 corridor overview
- Proposed SBS stops
- Proposed street design features
- Next steps
- Questions and discussion

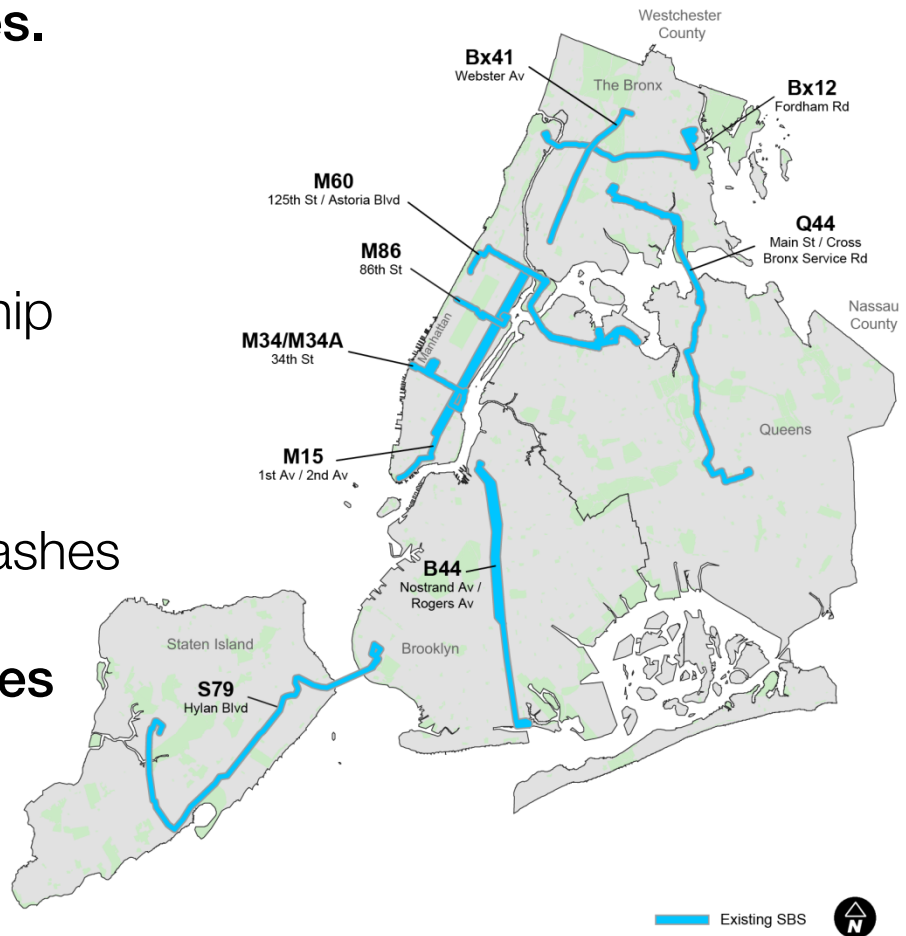
# Select Bus Service in New York City

Select Bus Service (SBS) is New York City's brand name for Bus Rapid Transit: an improved bus service that offers fast, frequent, and reliable service on high-ridership bus routes.

SBS has brought:

- 15-23% faster bus speeds
- About 10% increase in ridership
- More reliable service
- Customer satisfaction of 95%
- Safer streets / reduction in crashes

There are 9 Select Bus Service routes in operation serving all 5 boroughs.



# Select Bus Service Features

Dedicated Bus Lanes



Signal Priority for Buses



- **Faster** bus rides
- **Reduced traffic conflicts** between buses and traffic
- **More reliable** bus service
- Buses spend **less time stopped** at red lights

Off-Board Fare Collection



All-Door Boarding



- **Quicker** bus boarding
- Buses spend **less time waiting** at bus stops

# Select Bus Service Features

Improved Station Amenities



Real-Time Passenger Information



- **More attractive, appealing** bus stops
- **Better trip information** for riders to **know when** the bus is coming
- **More comfortable wait** for the bus

Pedestrian Safety Improvements



- **Better visibility** for pedestrians, bus operators, and drivers
- **Clearer, shorter** pedestrian crossings

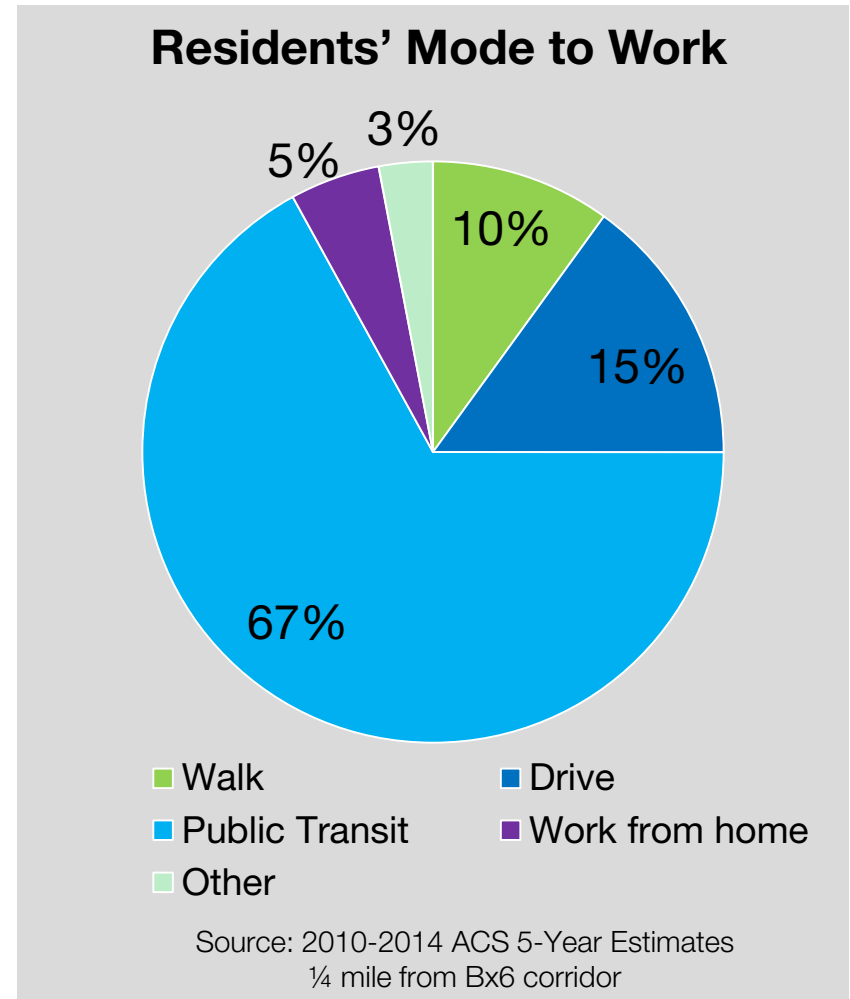
# Existing Bx6 local bus route



# Bx6 Background

The Bx6 South Bronx corridor was identified as a potential candidate for Select Bus Service in the 2009 Bus Rapid Transit Phase II Study.

- Serves nearly 25,000 daily riders
- Connects to **1**, **C**, **4**, **B**, **D**, **2**, **5**, **6** subway lines, Metro-North, and 20 bus routes, including Bx41 SBS
- 76% of households within a quarter-mile of the route do not own a vehicle



# Community Engagement

- **Kickoff meeting** (November 2015)
- **On street outreach** (November 2015 – March 2016)
  - During AM peak at five locations
  - Received 431 individual comments and distributed over 1,050 Bx6 SBS information cards in English and Spanish
- **Online feedback portal** (launched November 2015)
  - Received 51 location-specific comments
- **Elected officials briefing** (April 2016)
- **Top comments:**
  - Buses are “late” or off schedule
  - Buses are over-crowded or too small
  - SBS would be a welcome addition to Bx6

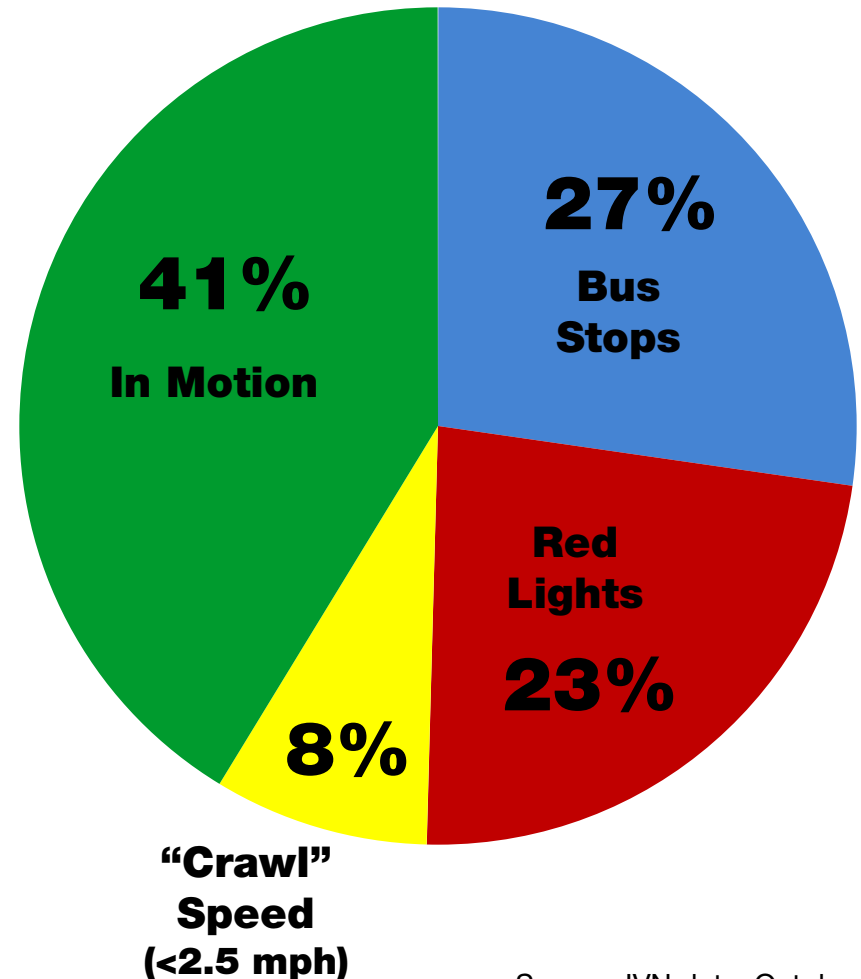




# Bus Delays

- 56 minutes on average to travel from Hunts Point to Riverside Drive (4.8 miles)
- Over 25% of trip spent boarding passengers
- Bus is moving less than half of the time

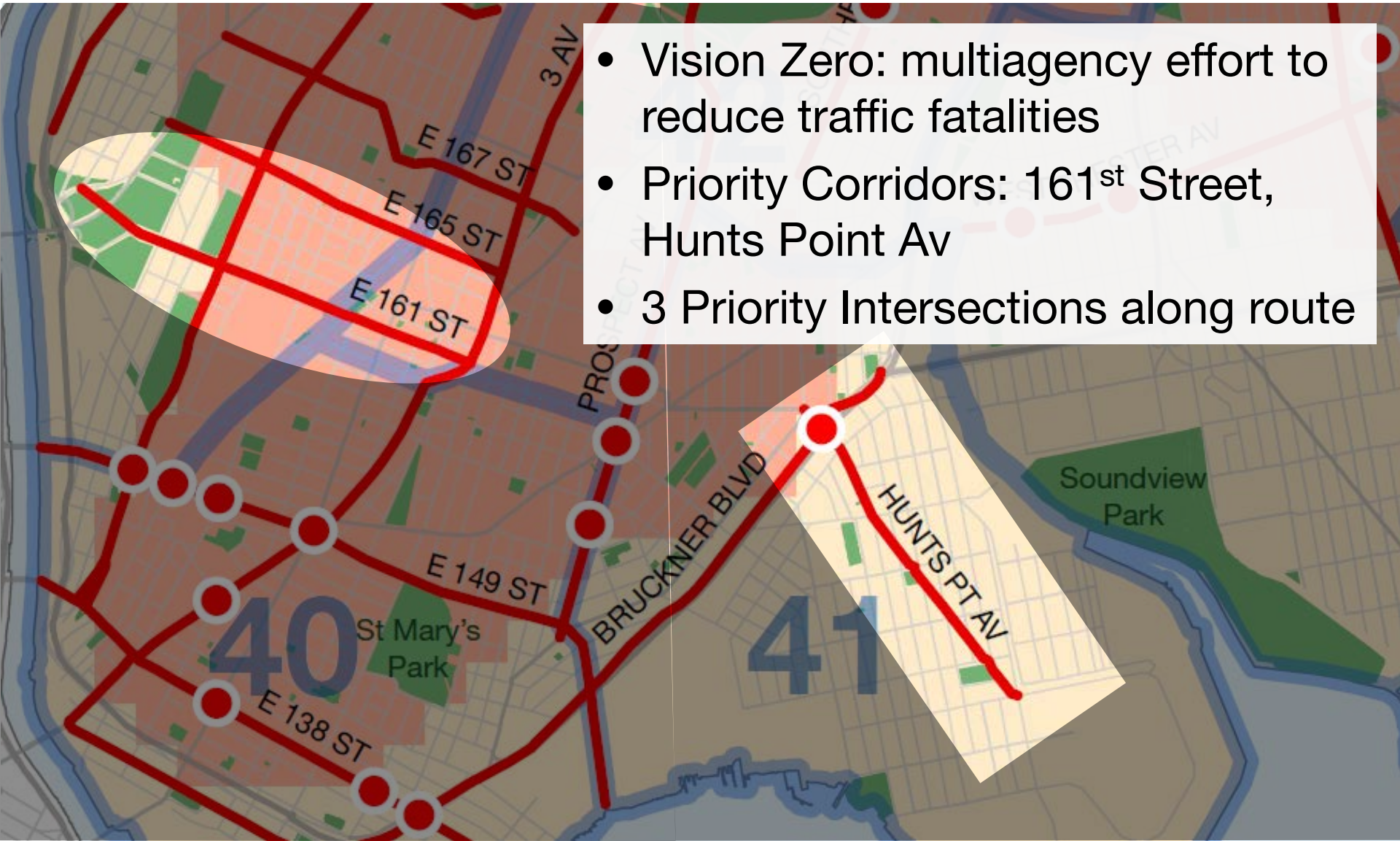
**Bx6 Westbound  
4-7 PM Weekdays**



Source: IVN data, October 2015

# Safety

- Vision Zero: multiagency effort to reduce traffic fatalities
- Priority Corridors: 161<sup>st</sup> Street, Hunts Point Av
- 3 Priority Intersections along route



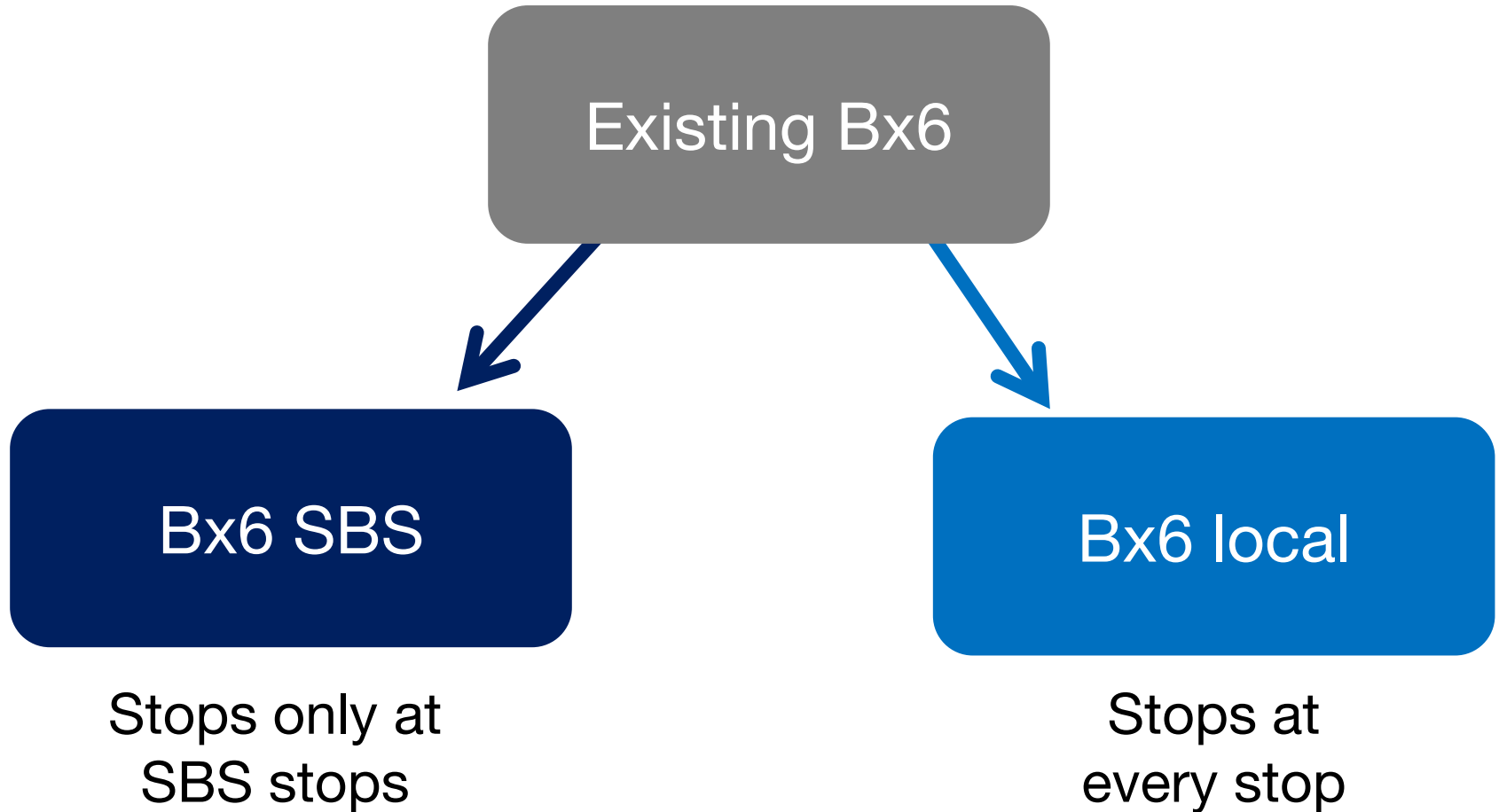
# Existing Ridership



# Existing Ridership



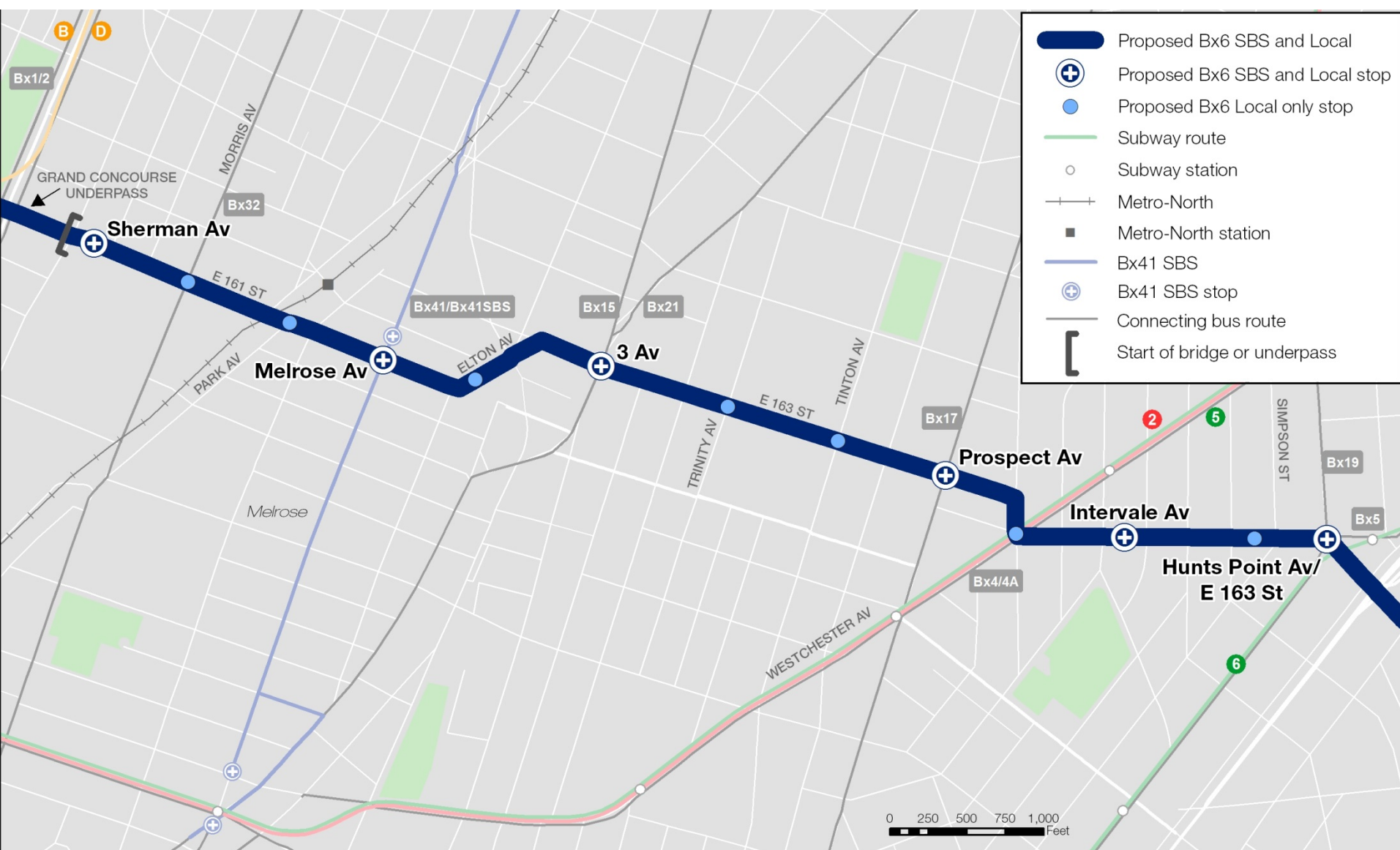
# Proposed Service Plan



# Proposed SBS Stops – Western Section



# Proposed SBS Stops – Central Section



- Proposed Bx6 SBS and Local
- + Proposed Bx6 SBS and Local stop
- Proposed Bx6 Local only stop
- Subway route
- Subway station
- Metro-North
- Metro-North station
- Bx41 SBS
- + Bx41 SBS stop
- Connecting bus route
- Start of bridge or underpass

0 250 500 750 1,000 Feet

# Proposed SBS Stops – Eastern Section





# Proposed SBS Stops

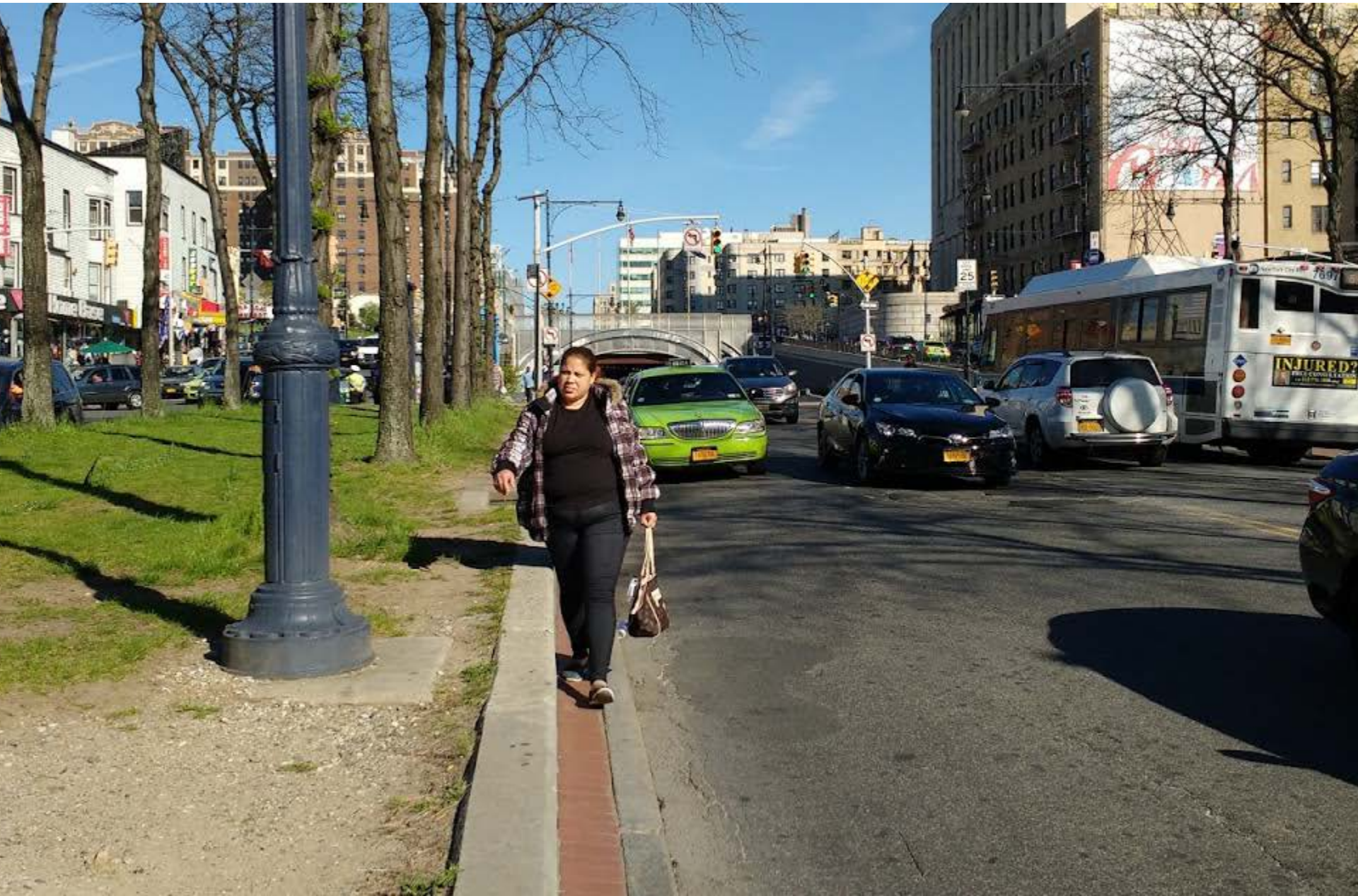


Photo: Whitaker Photography 2011

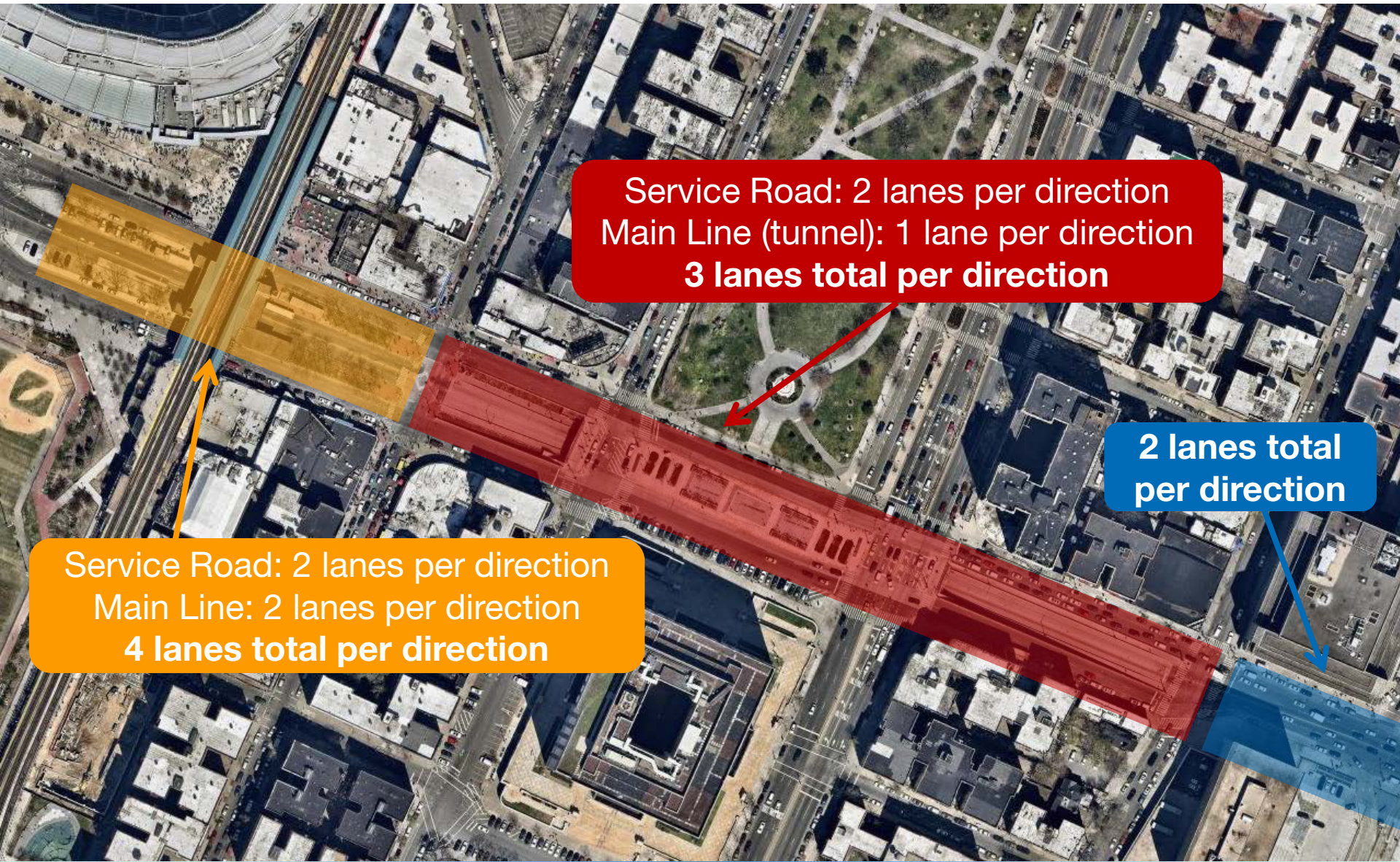
# Issue: Macombs Dam Bridge Congestion



# Issue: 161<sup>st</sup> Street Pedestrian Safety



# Issue: 161<sup>st</sup> Street Complicated Configuration



Service Road: 2 lanes per direction  
Main Line (tunnel): 1 lane per direction  
**3 lanes total per direction**

Service Road: 2 lanes per direction  
Main Line: 2 lanes per direction  
**4 lanes total per direction**

**2 lanes total per direction**

# Issue: Courthouse Congestion

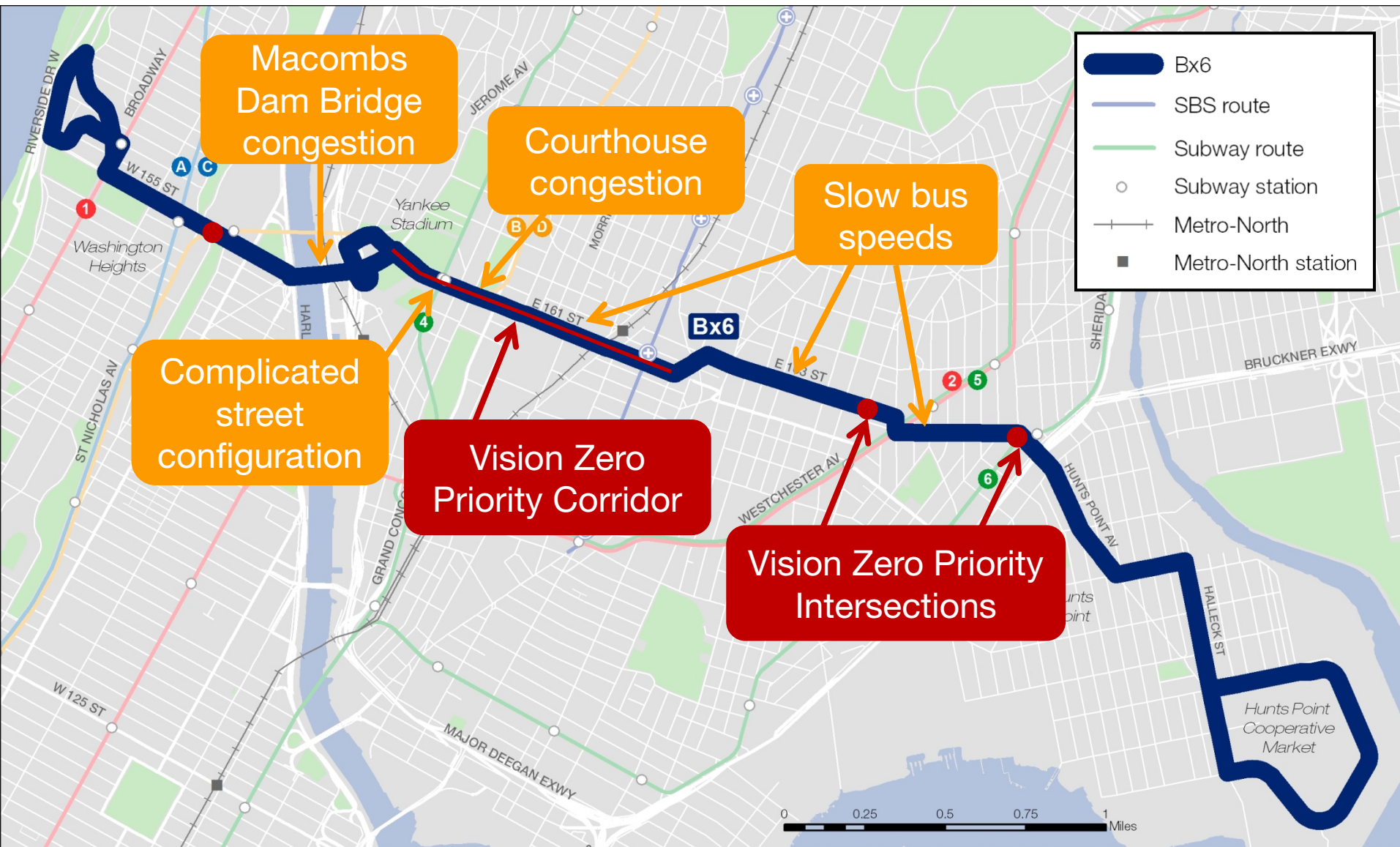


161<sup>st</sup> St, Sherman Av to Sheridan Av

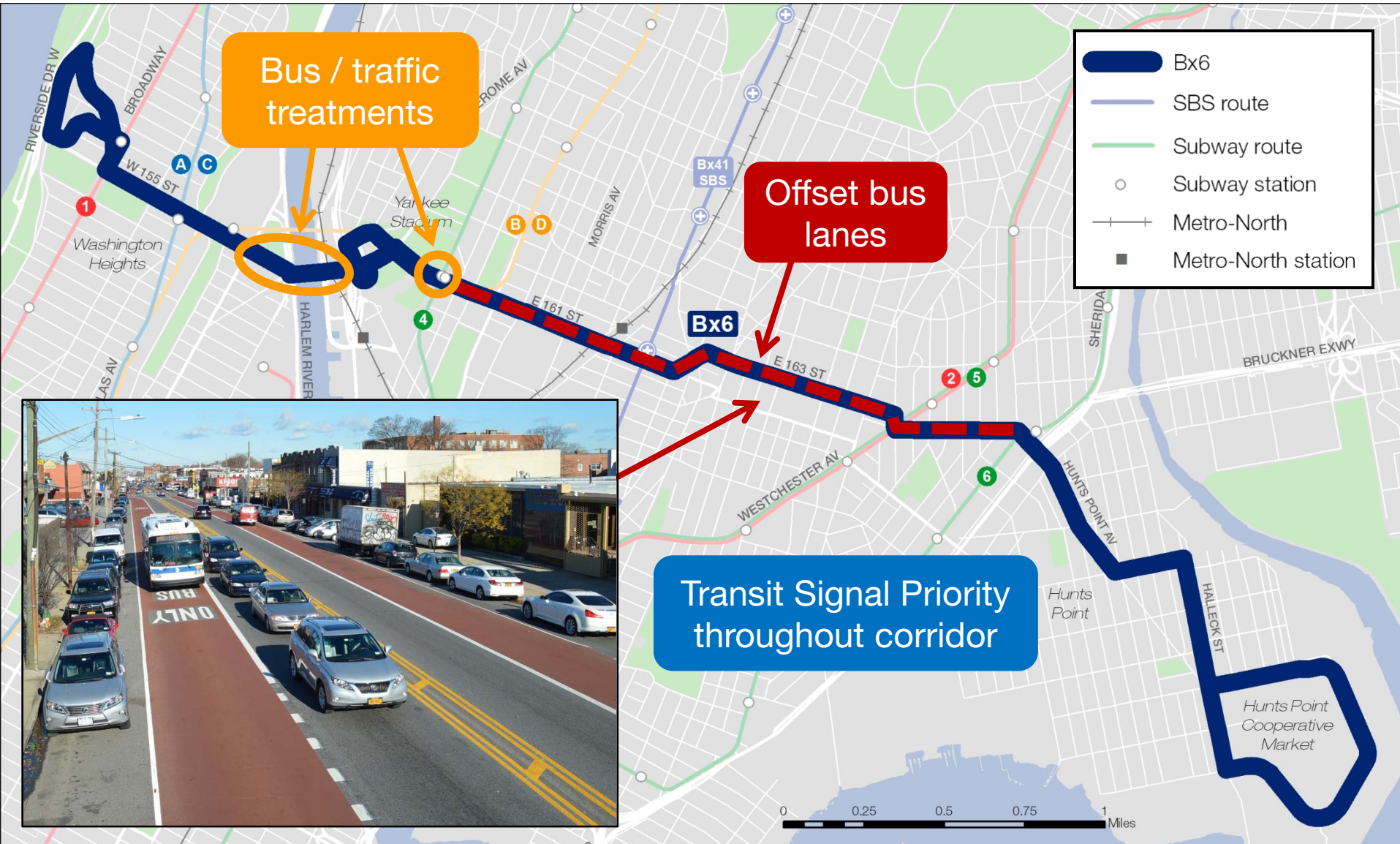
# Issue: Parking at Bus Stops



# Issues Summary



# Potential Street Design Features





# Potential Street Design Features



# Next steps

- Spring 2016
  - Continued outreach (Community Boards, stakeholders meetings, on-street outreach)
  - Draft street design
  - Traffic analysis
- Summer / Fall 2016
  - Finalize street design
  - Finalize service plan
- Fall 2016 / Spring 2017
  - Launch Bx6 SBS service

# Questions and Discussion

Thank You!

