

+selectbus service

Webster Avenue

Newsletter 2 / Winter 2013

Project Overview

Select Bus Service (SBS) is coming to Webster Avenue through a partnership between the New York City Department of Transportation (DOT) and MTA New York City Transit (NYCT). See the photo below to learn about SBS improvements, which will make bus travel faster and more reliable for the 20,000 daily riders on the Bx41.

SBS on the Bx41:

- Bx41 SBS replaces the Bx41 Limited
- Bx41 local route remains the same
- SBS fare = local bus fare

Webster Avenue Corridor Design

Bus Bulbs extend the sidewalk out to the bus lane at SBS stations, creating additional space for bus riders and pedestrians

Parking along the curb except at bus stops

Pedestrian Amenities: Curb extensions, pedestrian safety islands, and medians will make intersections safer

Dedicated Bus (& Right Turn) Lanes: Offset bus lanes allow buses to move quickly while preserving parking

General Travel Lane

Transit Signal Priority (Not Pictured): Buses will get an extended green light at certain intersections, reducing stop time at red lights



Design of typical conditions on Webster Avenue

Project Update

DOT and NYCT are working hard to bring SBS to Webster Avenue. This includes:



Congestion on Webster Avenue at E. Fordham Road will improve after implementation of traffic flow changes

Traffic Operations

The project team completed a corridor-wide traffic study taking into account all proposed changes. The results show traffic will continue to move well along Webster Avenue. To improve operations at congested locations, DOT will be making traffic flow improvements as part of this project, such as:

Right-turn bays to reduce bus lane blockages at busy intersections

Lengthening left-turn bays to create more space for vehicles to wait

Banning left turns at key intersections to reduce conflicts between vehicles and pedestrians and keep through traffic moving better.

Bus Service Changes

In addition to the introduction of the Bx41 SBS, NYCT will be making targeted service changes on Third Avenue, which runs parallel to Webster Avenue. The Bx55 will become the Bx15 Limited, connecting Fordham Plaza in the Bronx with 125th Street in Manhattan. NYCT is also proposing a new bus service between Fordham Plaza and LaGuardia Airport, pending funding availability.

See back page for detailed map



The Bx15 LTD will replace the Bx55 on Third Avenue



Delivery windows provide designated curb space for commercial vehicles

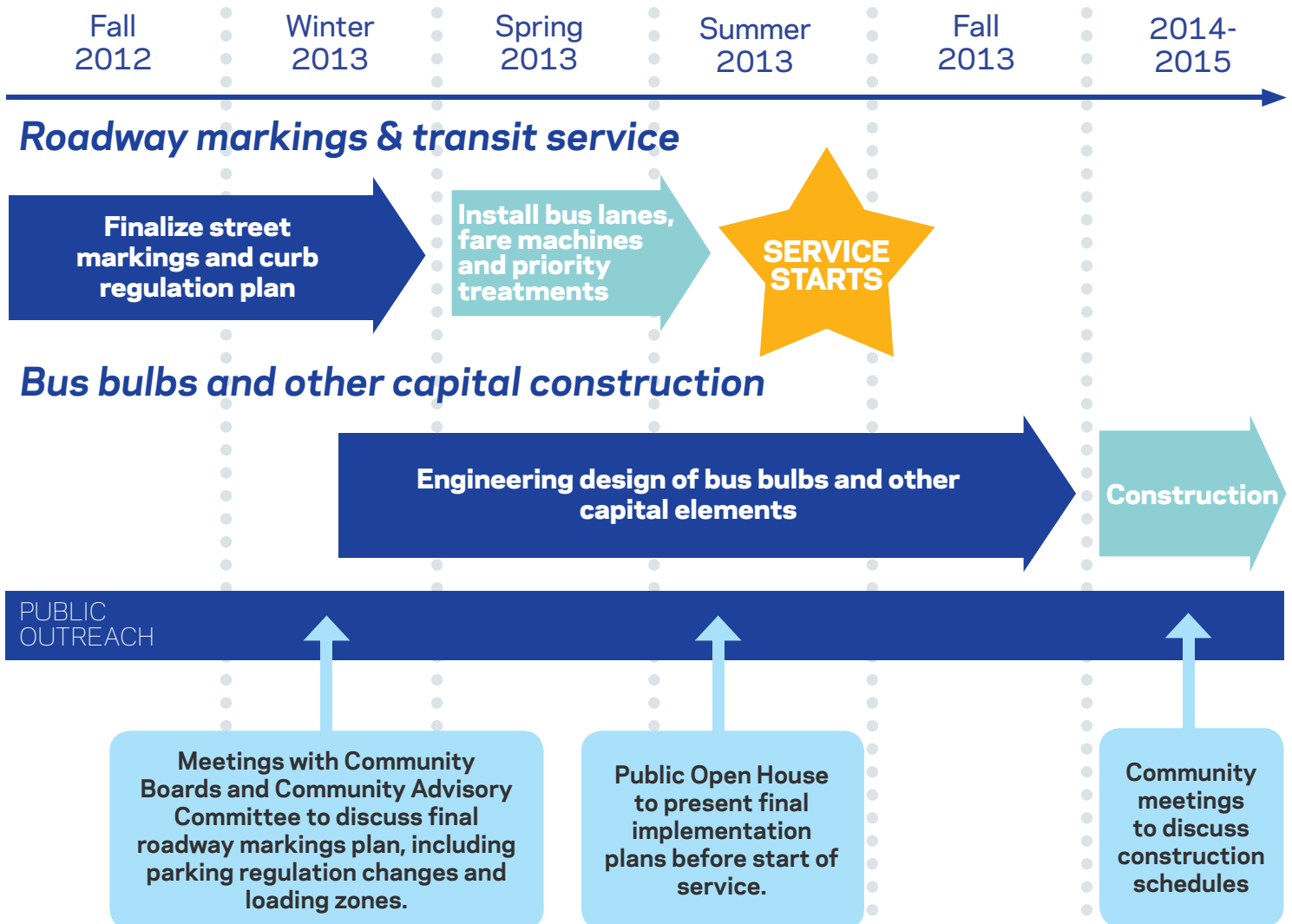
Curb Regulations

DOT is working with the local Community Boards and businesses to update curb regulations along Webster Avenue in key commercial areas. Possible improvements include:

Delivery Windows - Provide designated space for commercial vehicles during certain times of the day. These regulations keep the curb clear for store deliveries and help reduce double parking.

Metered Parking - Adding or extending metered parking areas encourages more parking turnover in retail areas, which is good for businesses who rely on curb side access for their customers.

Project Schedule



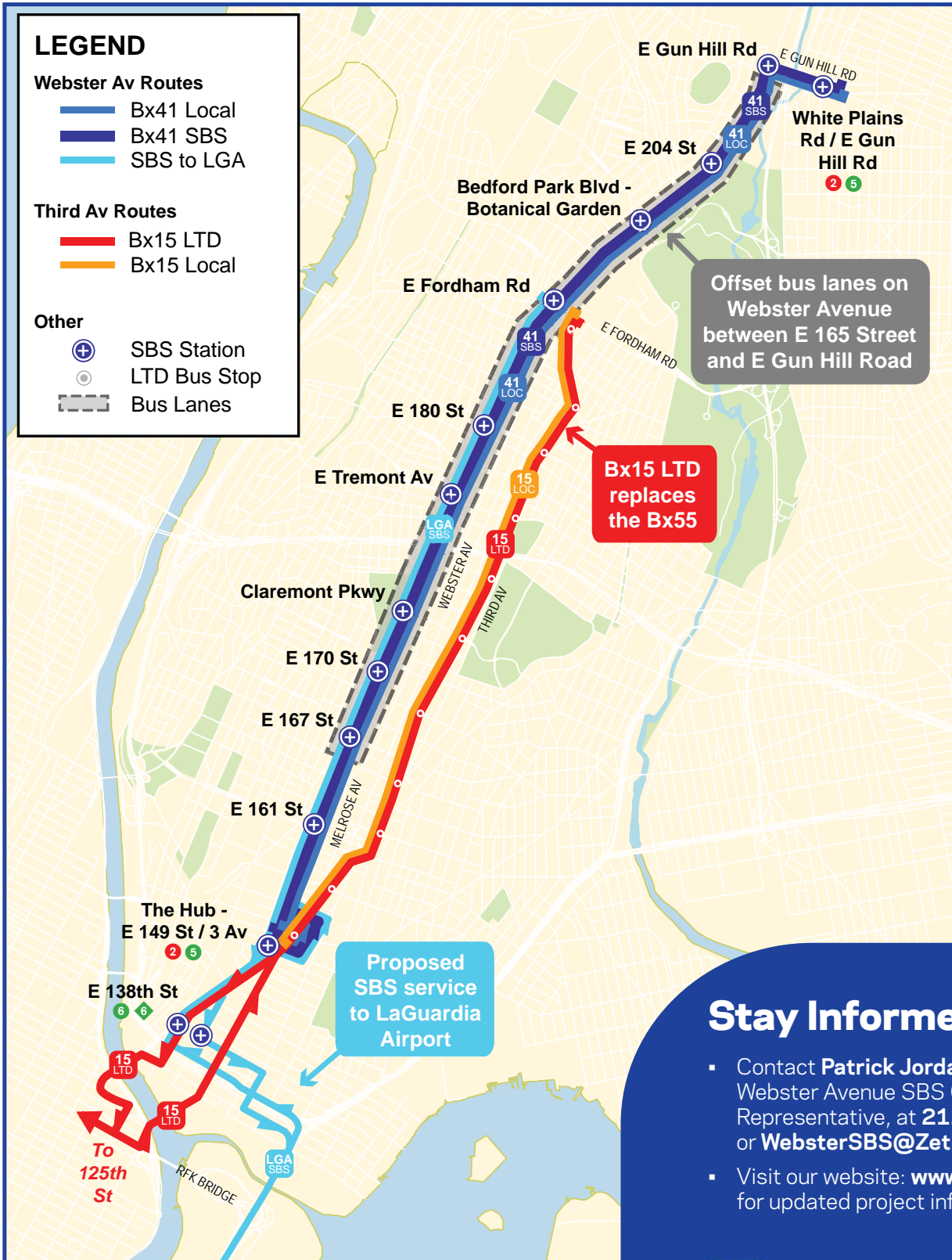
SBS Success in NYC

SBS has already been implemented on the Bx12 route in the Bronx (2008), the M15 (2010) and M34/34A (2011) in Manhattan and the S79 in Staten Island (2012). SBS has provided significant benefits:

- **15% to 20% faster trips**
- **Over 95% customer satisfaction**
- **5-10% ridership increase** on the entire route, in the first year of service



Webster Avenue Corridor Service Plan



Stay Informed!

- Contact **Patrick Jordan**, the Webster Avenue SBS Outreach Representative, at **212-799-8803** or **WebsterSBS@Zetlin.com**.
- Visit our website: **www.nyc.gov/brt** for updated project information.



www.twitter.com/NYC_DOT



www.facebook.com/NYCDOT