

First Avenue/Second Avenue Select Bus Service

Community Board 11 Public Safety & Transportation Committee
Wednesday, June 9, 2010



New York City Transit



Agenda

Project Overview

Outreach

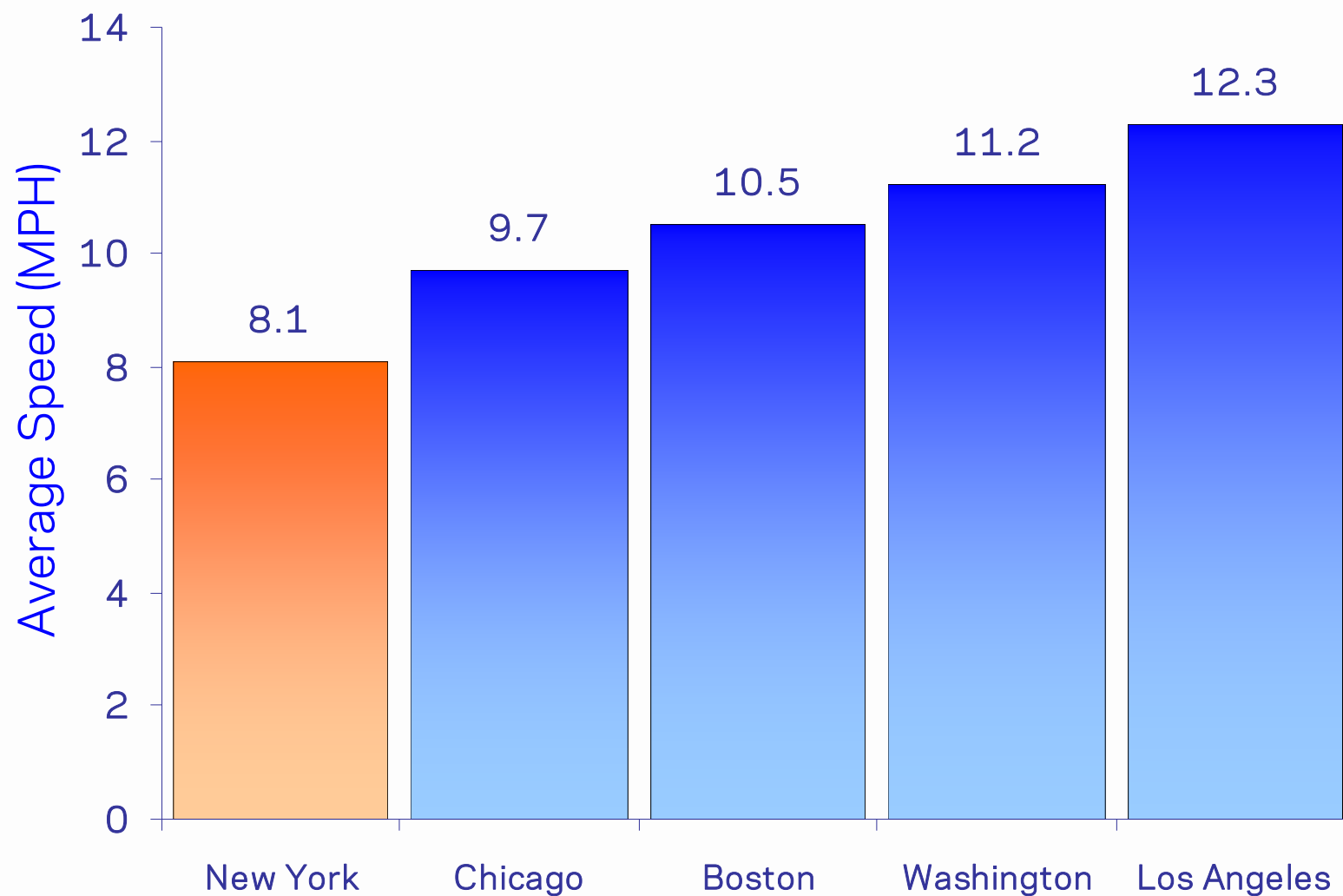
CB11 Station Locations

2010 Implementation Plan

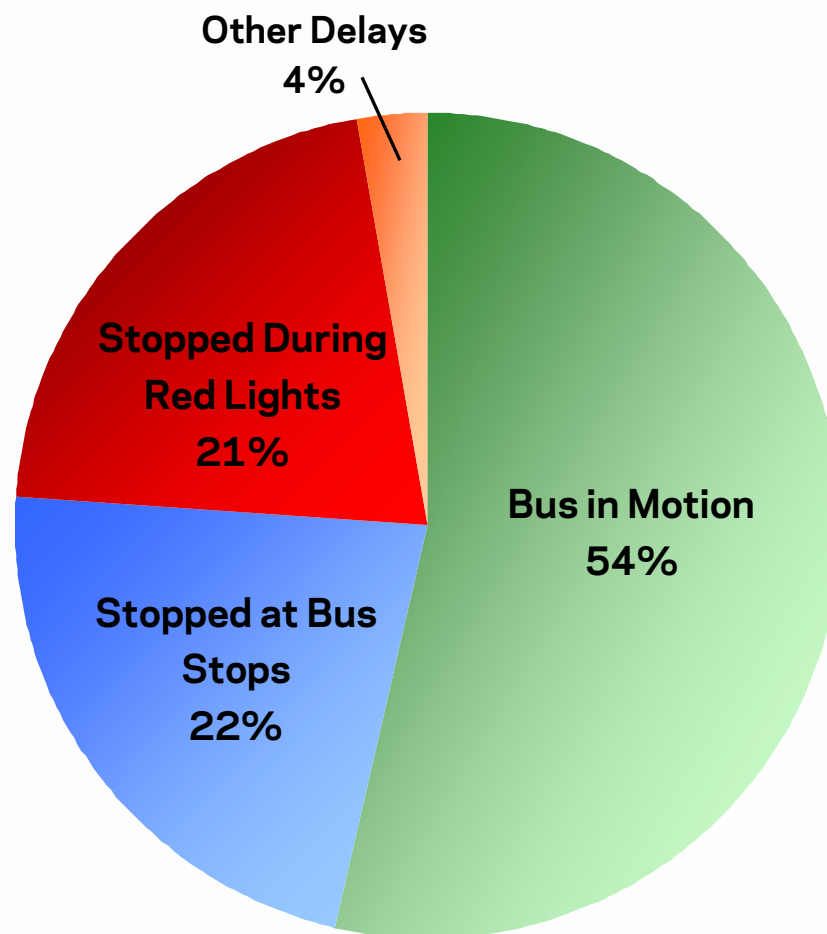
Parking Regulations

109th Street

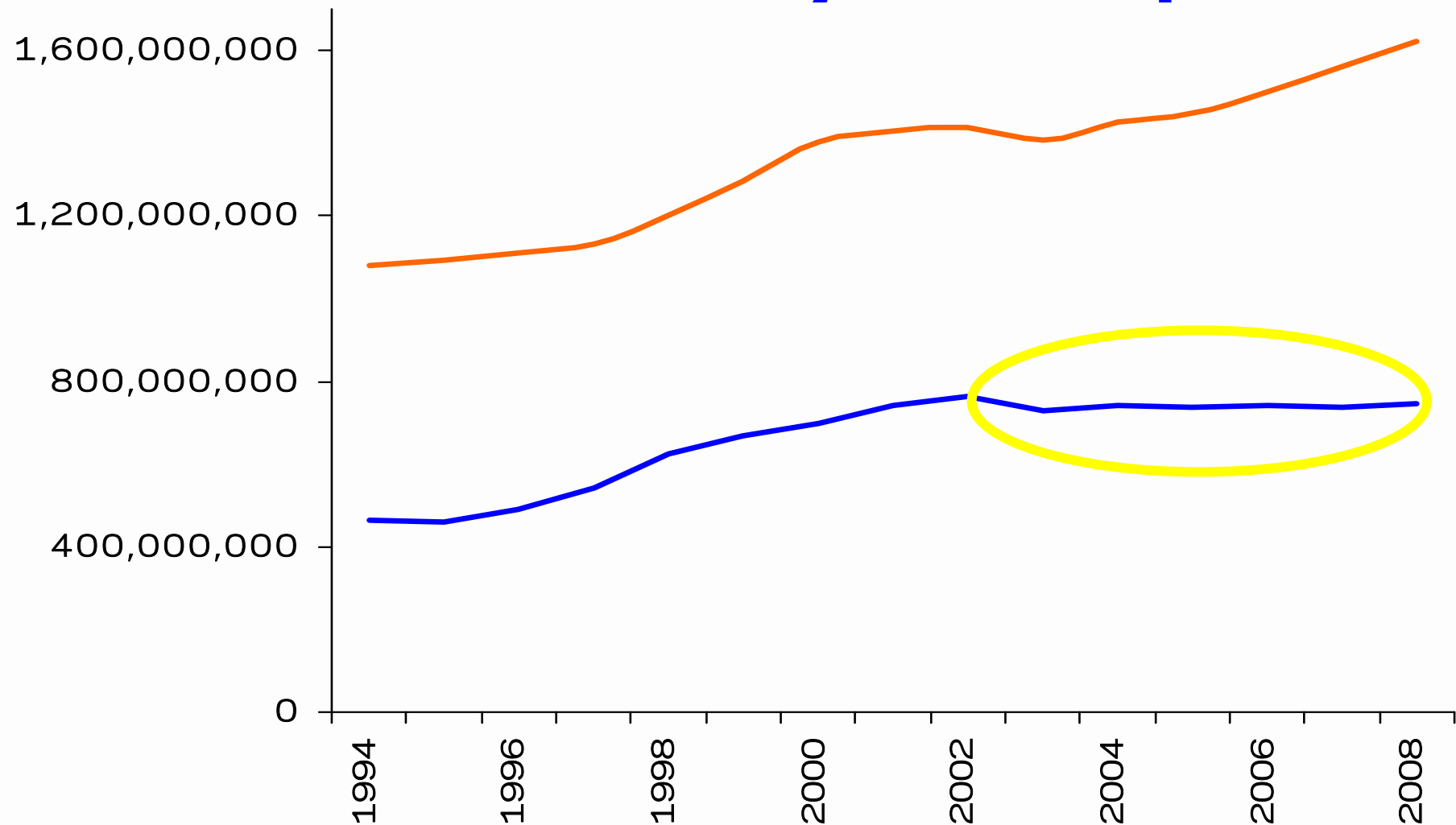
Bus Speeds in NYC vs. Other Cities



Sources of Delay on M15 Limited

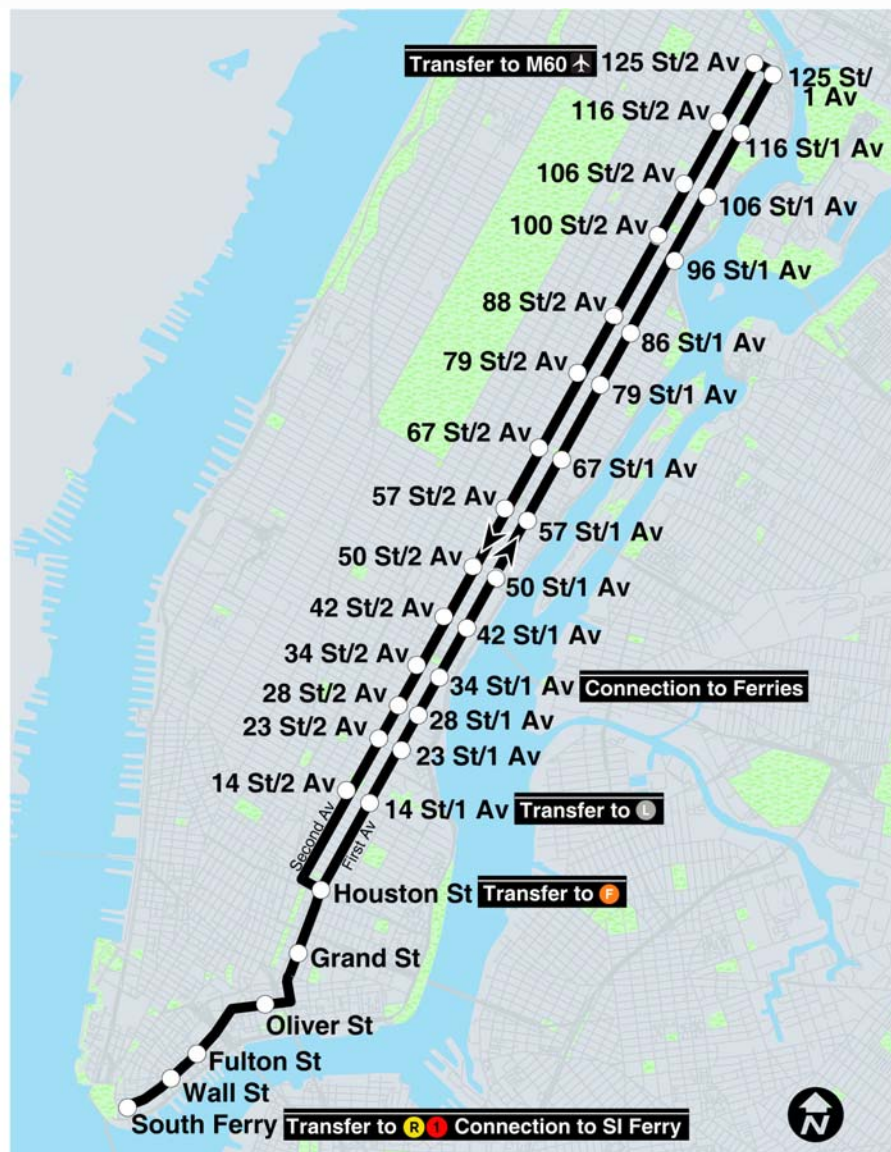


Bus vs. Subway Ridership



— Subway Ridership — Bus Ridership

M15 Select Bus Service



8.5 miles from South Ferry to 125th Street

Currently served by M15 bus route

Over 54,000 weekday riders

Bus speeds have slowed

Ridership has been decreasing

Within a ¼ mile:

537,000 residents

78% of households do not own a car

57% of residents commute by transit

M15 Select Bus Service Features



Bus Lanes



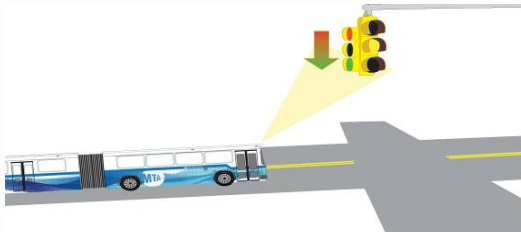
Pre-Payment



Stations



Bus Bulbs



Bus Signal Priority



Branding

SBS

M15 Select Bus Service Features

Features	Current M15	M15 SBS (2010)	M15 SBS (2011-2012)
Local service	Yes	Yes	Yes
Limited service	Yes	No	No
Simpler service pattern	No	Yes	
Fare pre-payment	No	Yes	
Regular bus fare	Yes	Yes	
Improved bus lanes	No	Yes	
Low-floor, three-door articulated buses	No	Yes	
Bus bulbs	No	No	Yes
Transit Signal Priority	No	No	Yes (below Houston St)

Public Outreach

Community Advisory Committee

Composed of:

Elected Officials

Community Organizations

Community Boards

Business Representatives

Major Institutions

Transit Customers

Meetings in May 2009, September 2009, January 2010, April 2010

Community Board Meetings

Meeting with Board 11: February 2, 2010

Public Outreach

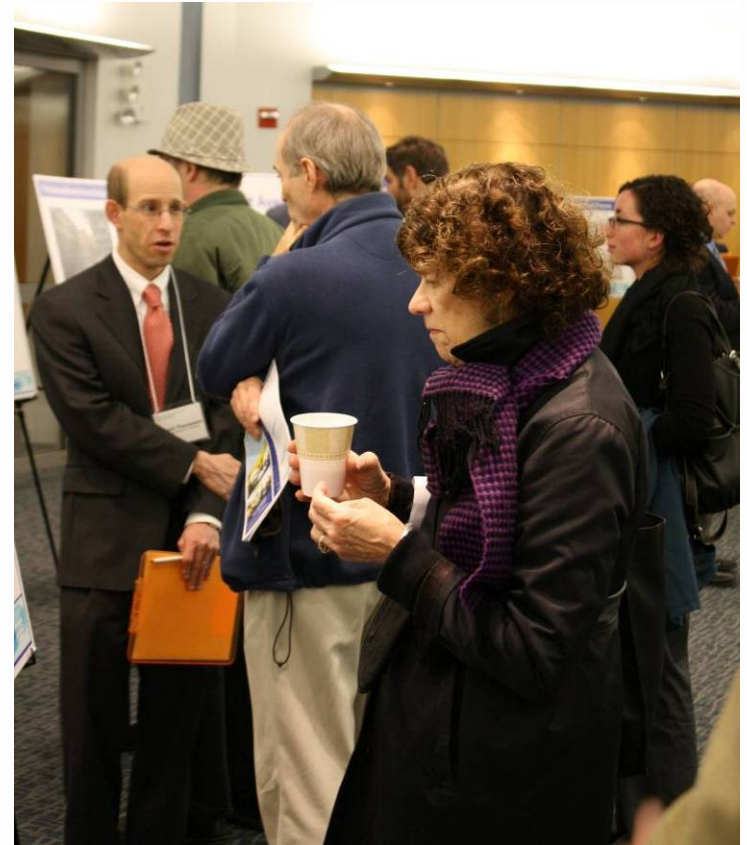
Public Open Houses

March 18 and 24, 2010

93 attendees

Opportunities for one-on-one
interaction with DOT/NYCT staff

Meetings with other area stakeholders



Public Outreach

Outreach to businesses

Multi-lingual fliers distributed to every storefront from Houston to 125th Street on both Avenues

Field survey of the corridor identified businesses with potential delivery/loading concerns

Over 100 businesses/institutions contacted to discuss loading patterns

Discussions still ongoing

+selectbusservice
first avenue/second avenue
Newsletter 1 / March 2010

SELECT BUS SERVICE IS COMING TO FIRST AVENUE/SECOND AVENUE

About the Corridor

- 8.5 miles from South Ferry to 125th Street
- Over 57,000 weekday riders on the M15
- Within 1/4 mile of the corridor:
 - 537,000 residents
 - 78% of households do not own a car
 - 57% of residents commute by transit

About Select Bus Service (SBS)

- Part of a citywide effort to improve service along major bus corridors
- Reduce travel time and improve reliability
- Make buses more attractive and easier to use

First Avenue/Second Avenue Corridor

FEATURES

Low-Floor, Three-Door Buses

Dedicated Bus Lanes

Bicycle Facilities and Pedestrian Improvements

Transit Signal Priority

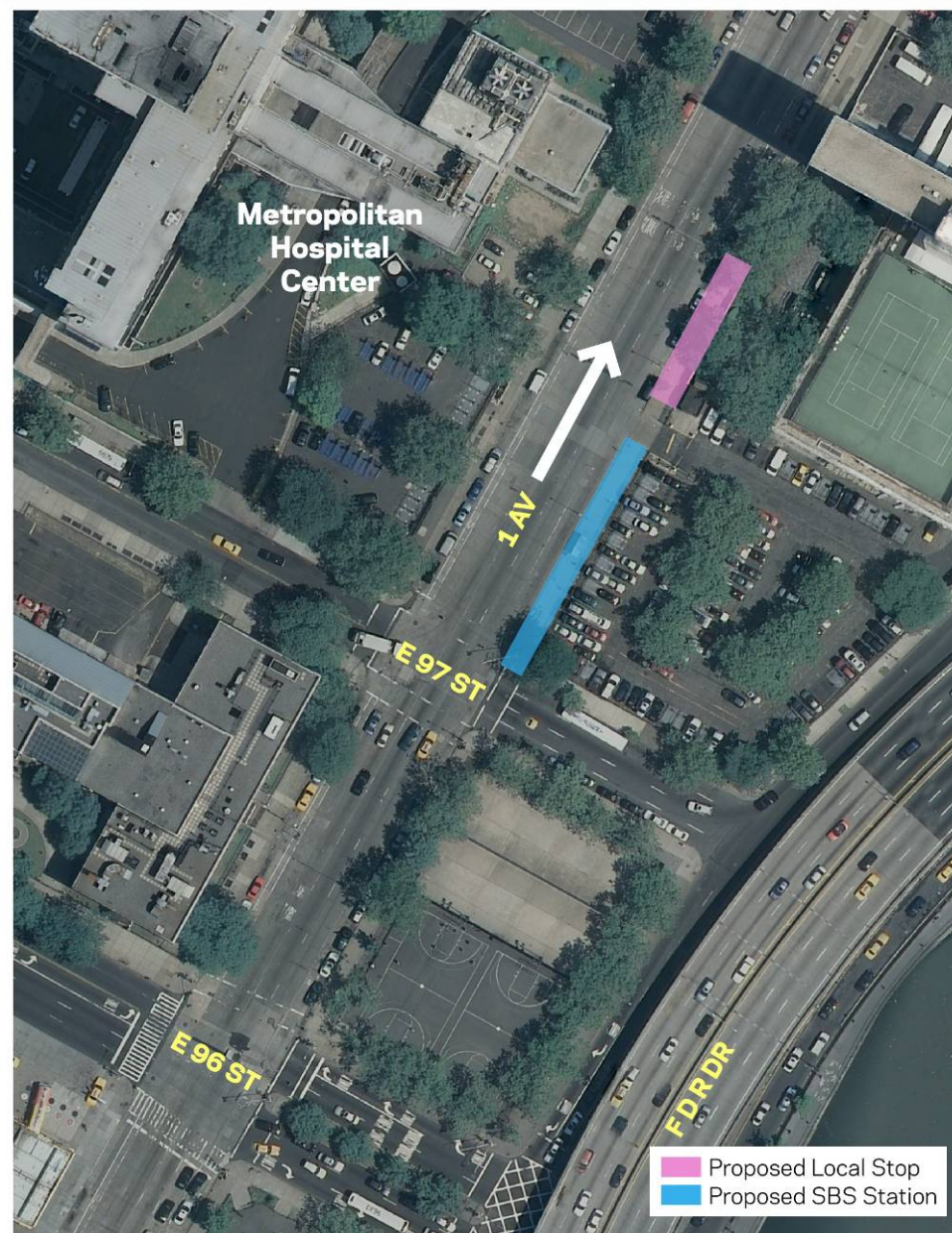
Off-Board Fare Collection

MTA New York City Transit

NEW YORK CITY
DO

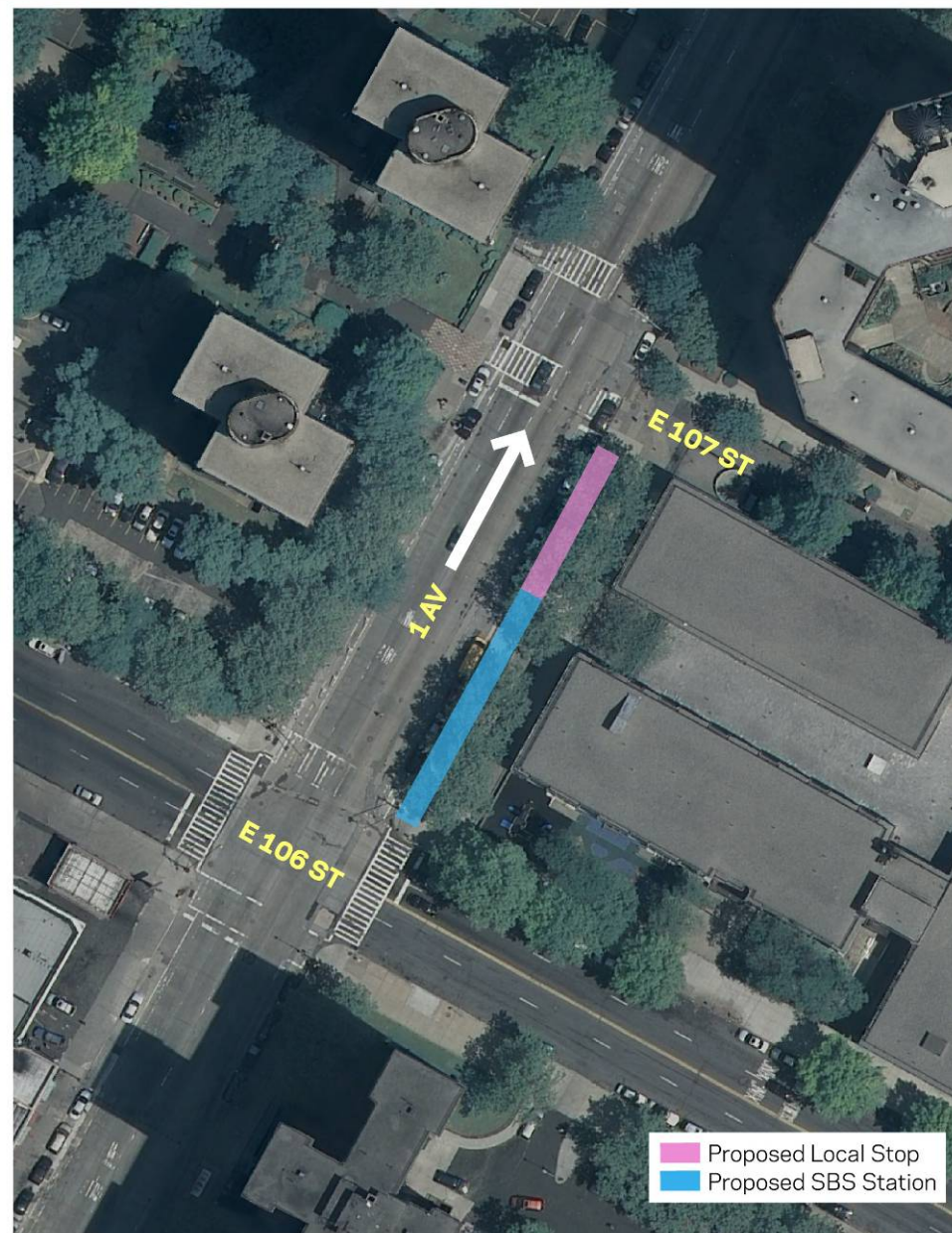
96th Street/First Avenue (Northbound)

SBS south of local north of
97th Street



106th Street/First Avenue (Northbound)

SBS north of local between
106th and 107th Streets



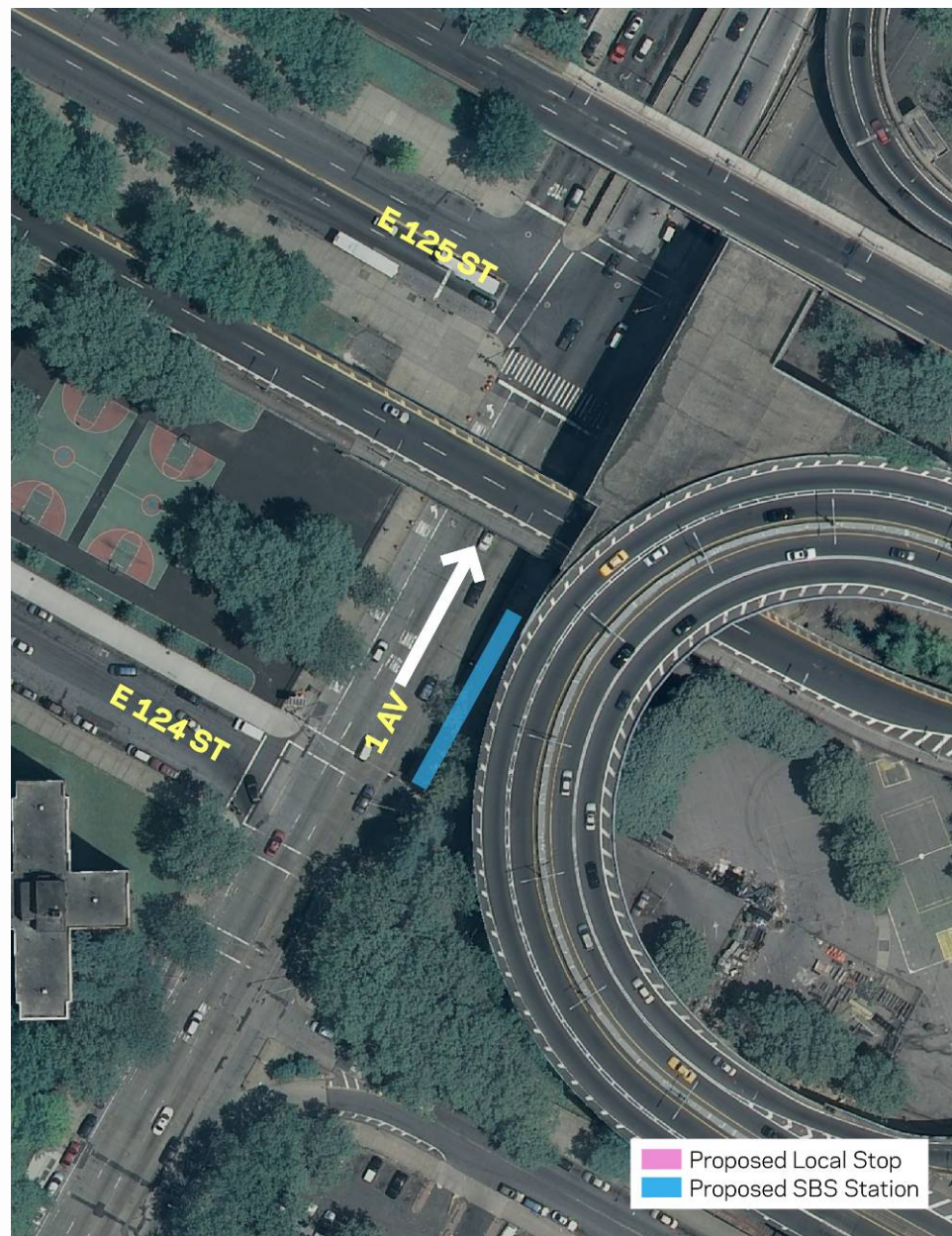
116th Street/First Avenue (Northbound)

SBS north of local between
116th and 117th Streets



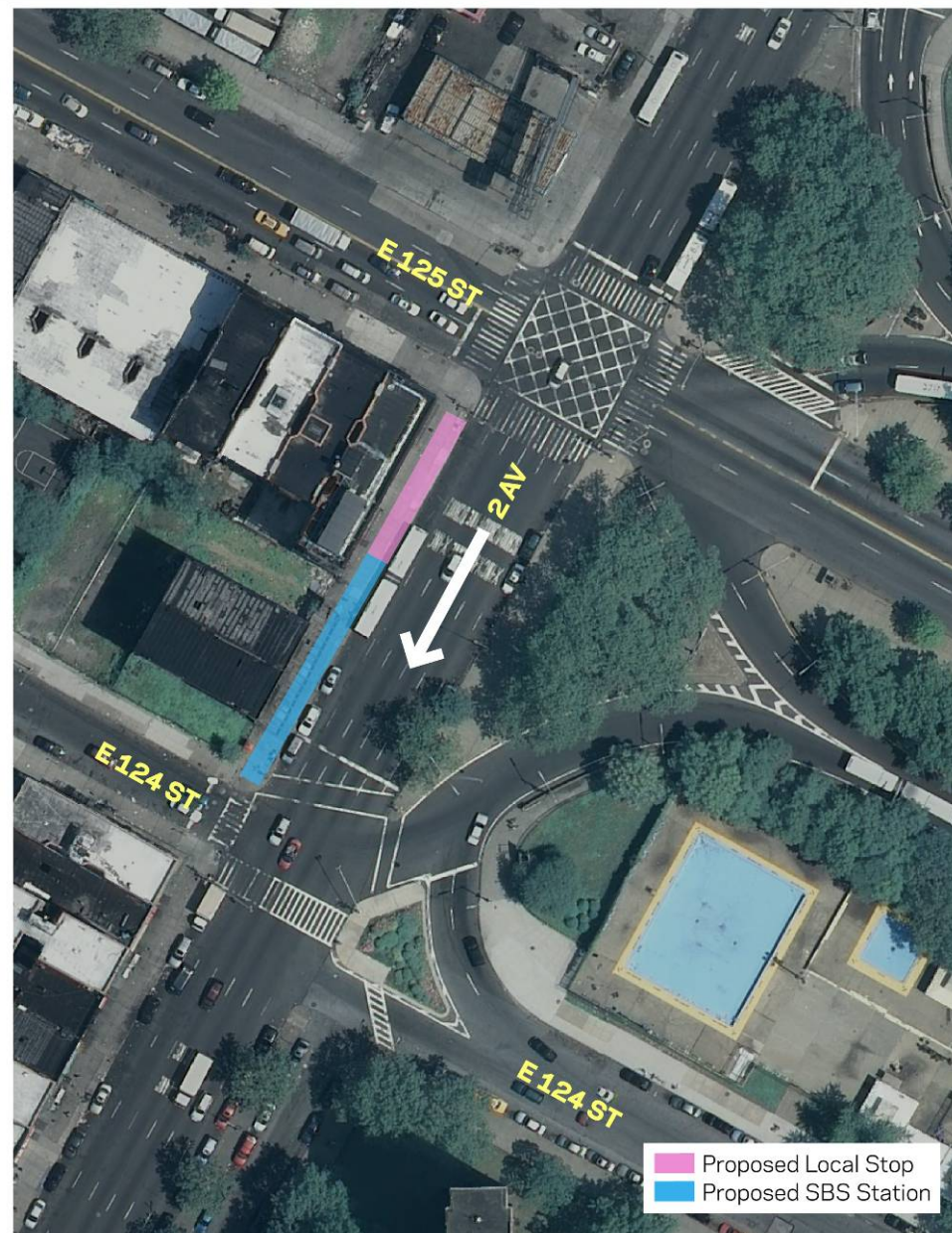
125th Street/First Avenue (Northbound)

SBS and local north of 124th
Street (drop-offs only)



125th Street/Second Avenue (Southbound)

SBS south of local between
125th and 124th Streets



116th Street/Second Avenue (Southbound)

SBS south of local south of
115th Street



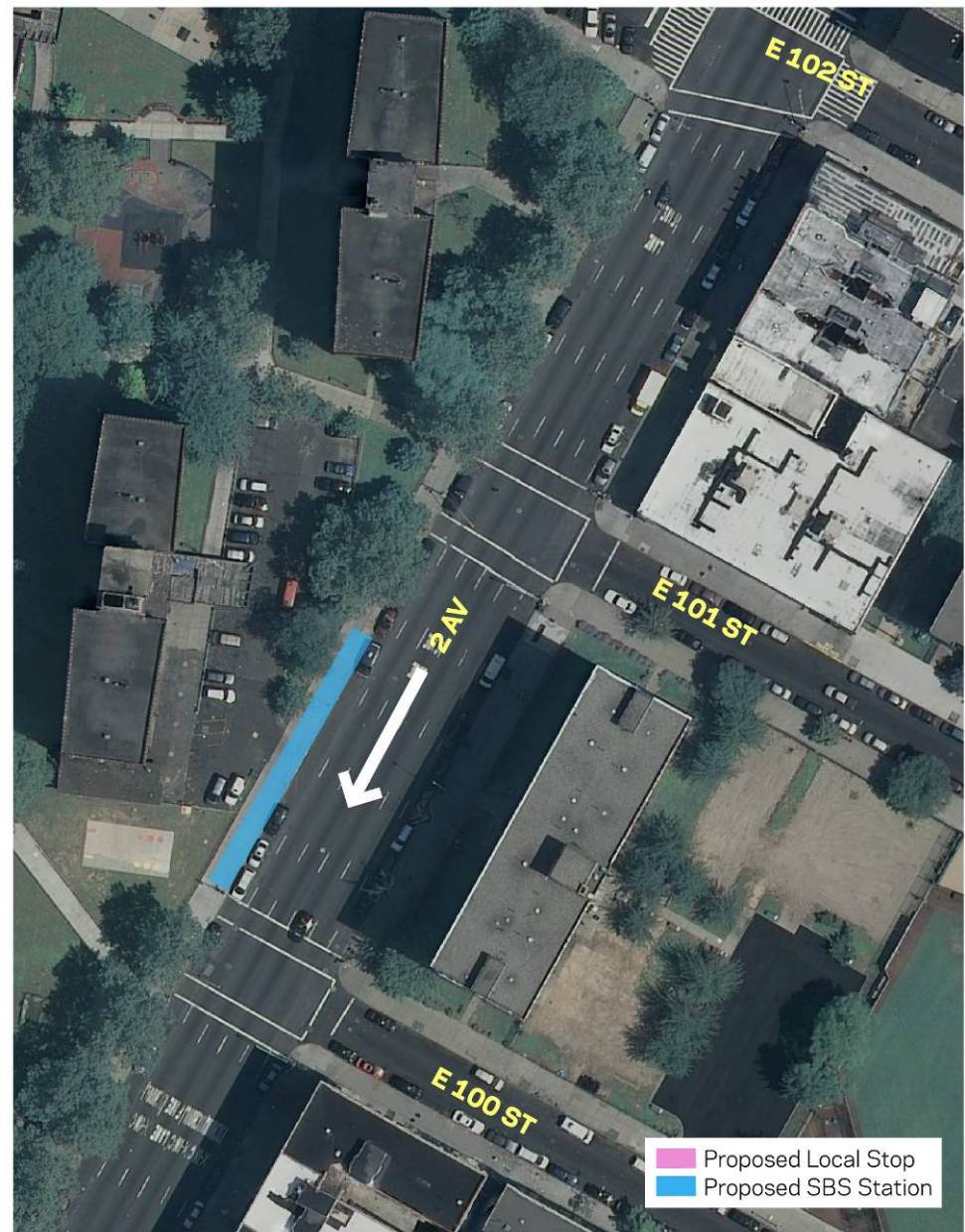
106th Street/Second Avenue (Southbound)

SBS south of local north of
106th Street



100th Street/Second Avenue (Southbound)

SBS between 101st and
100th Streets



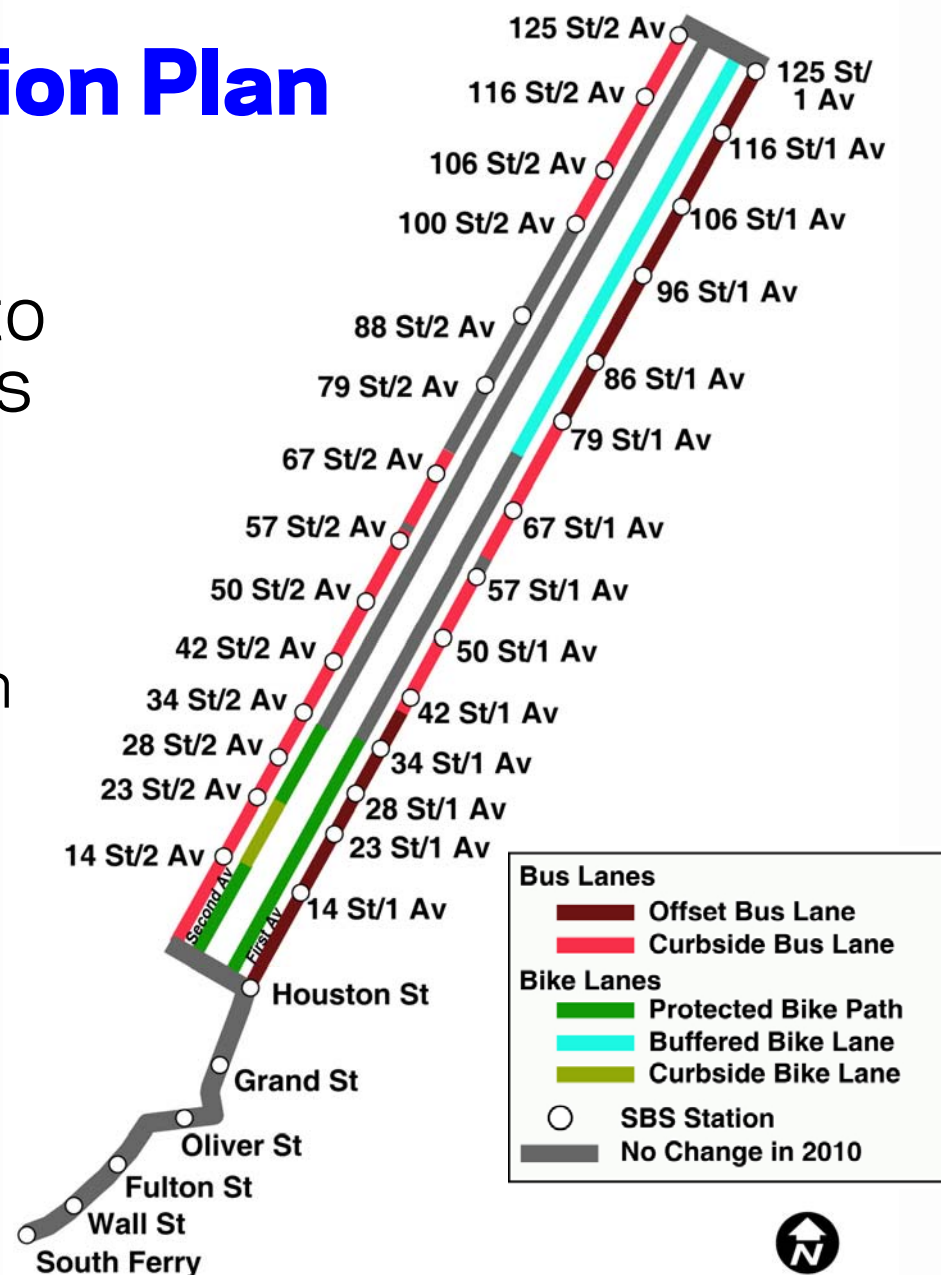
2010 Implementation Plan

Offset or curbside bus lanes from Houston St to 125 St on both Avenues

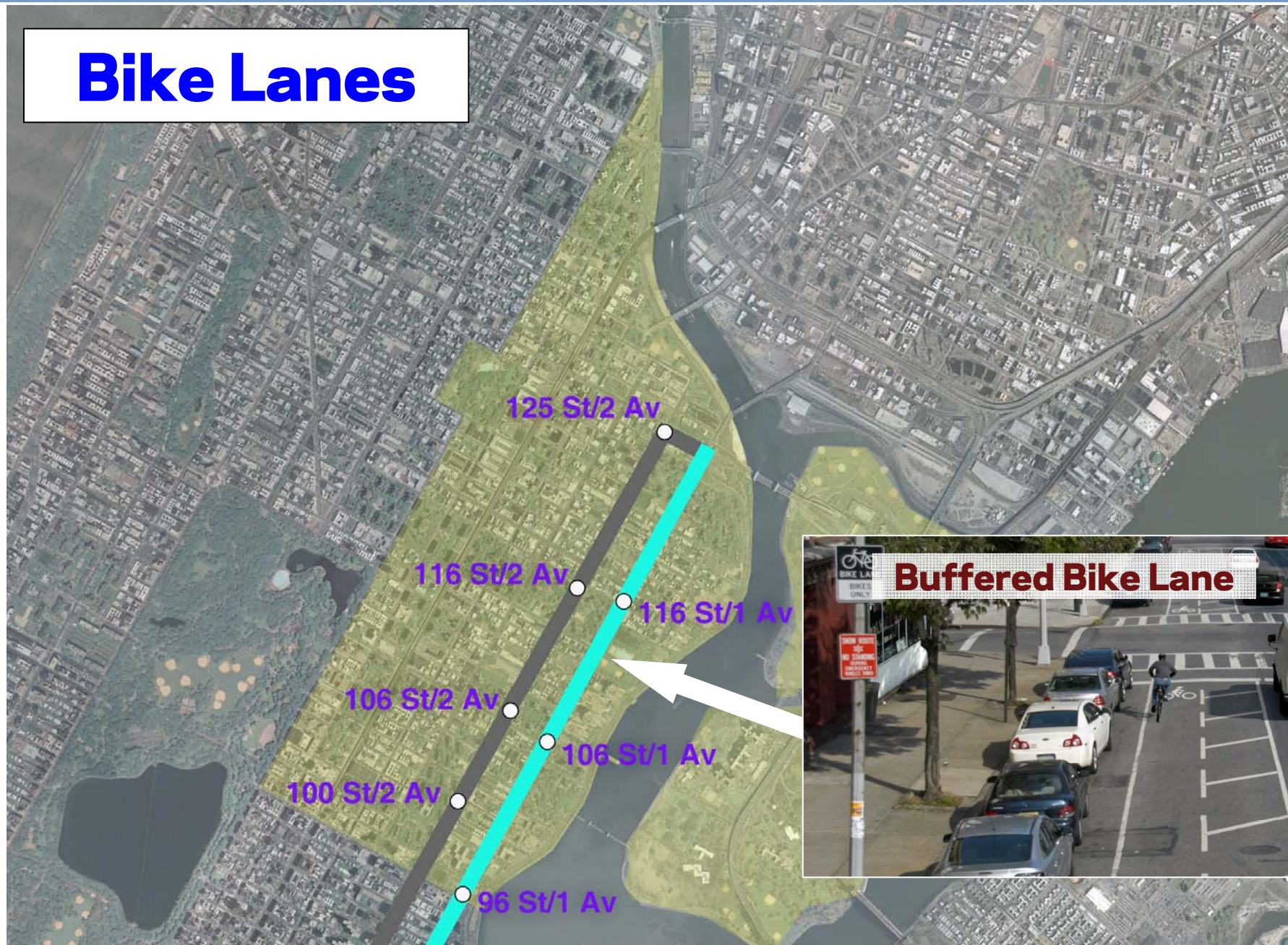
2010 bike lanes

Houston St to 34th St on both Avenues

72nd St to 125th St on First Avenue



Bike Lanes



Bus Lanes

Curbside Bus Lane



Offset Bus Lane



Where bus lane is offset:

Bus lane in effect at all times

Curb lane parking regulations remain largely unchanged



Bus Lane and Parking Regulations

Where bus lane is at the curb:

Bus lane hours 7 am to 10 am, 2pm to 7pm

Metered commercial loading 10 am to 2 pm

Open parking overnight



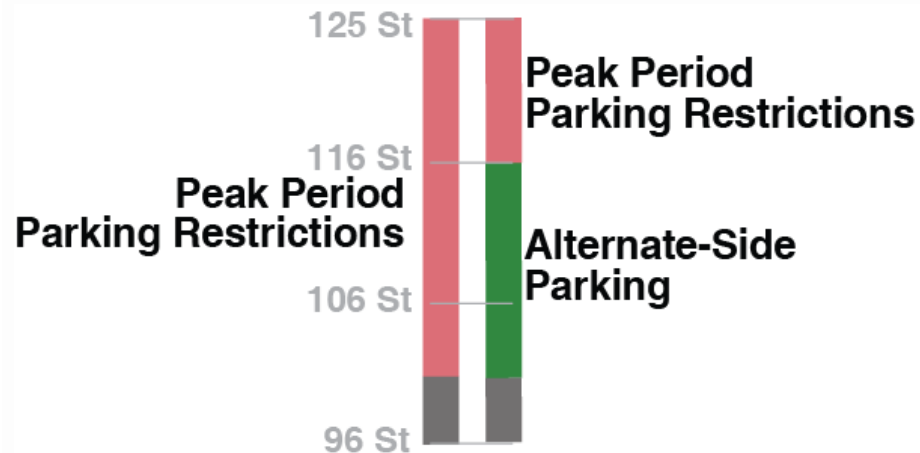
Parking Regulations

First Avenue

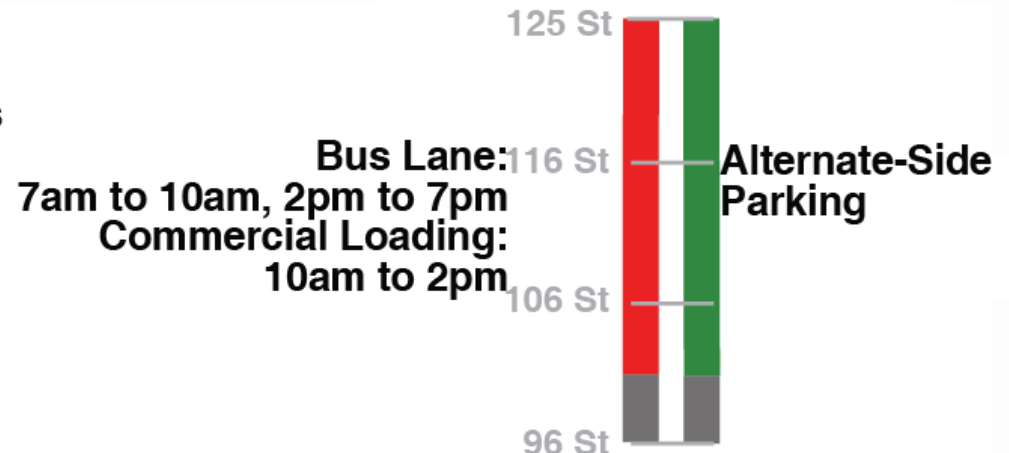
No change to alternate-side parking from 96th St to 125th St

Second Avenue

Current



2010 Plan



Implementation Timeframe

Select Bus Service begins October 2010

Features:

Off-Board Fare Collection

New low-floor, three-door buses

Improved bus lanes



Implementation Timeframe

Construction Sequencing

June - October

Milling

Paving

Lane markings

Bus and bike lane paint

Signs

Pedestrian islands

September

Bus Shelters

Fare Machines



Next Steps

Street resurfacing begins next month in CB11

Ongoing outreach to area stakeholders

CAC #5 – Mid-summer 2010

Open House #2 – September 2010

October 2010

M15 Select Bus Service

Over 10 miles of new or improved bus lanes

Off-board fare payment at all stations

New low-floor, three-door buses

Over six miles of new or improved bike lanes

109th Street between Second and Third Aves

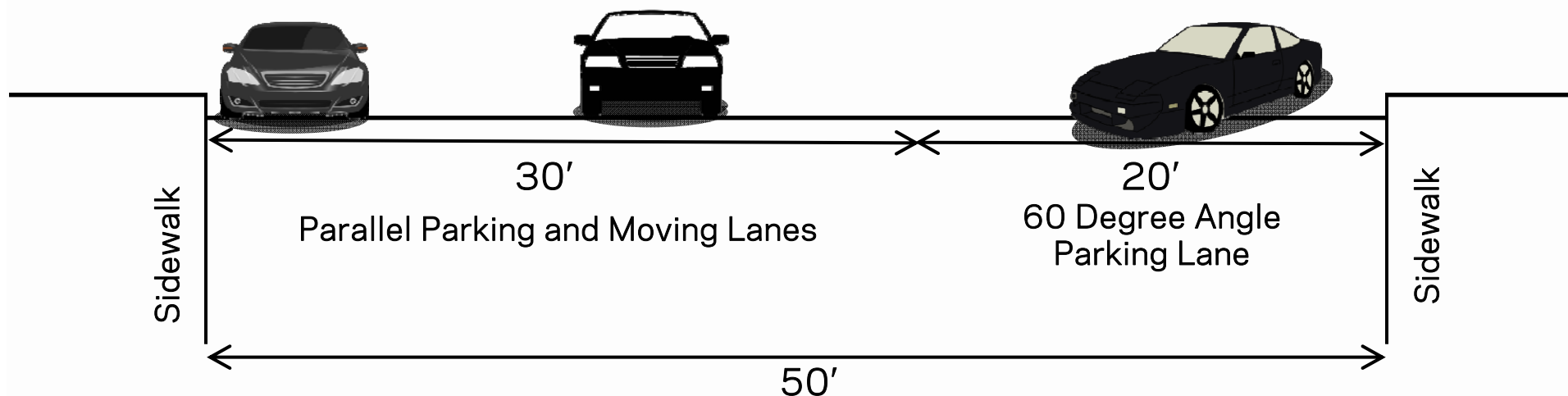


School buses currently load and unload on Second Av in front of J.H.S. 117 in future curbside bus lane

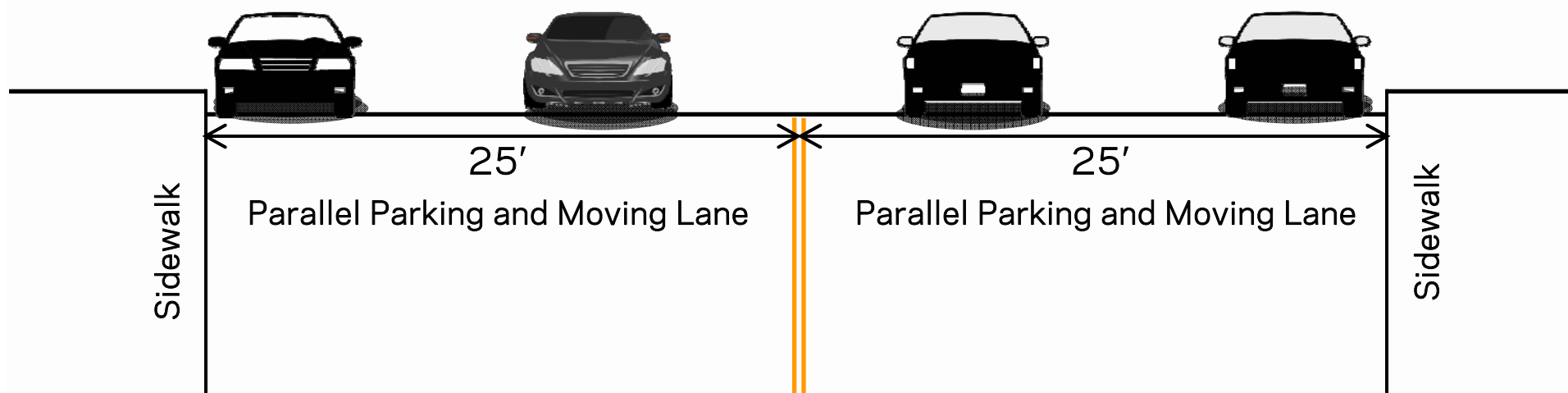
To allow buses to serve school, conversion of 109th St to two-way is proposed

109th Street between Second and Third Aves

Existing

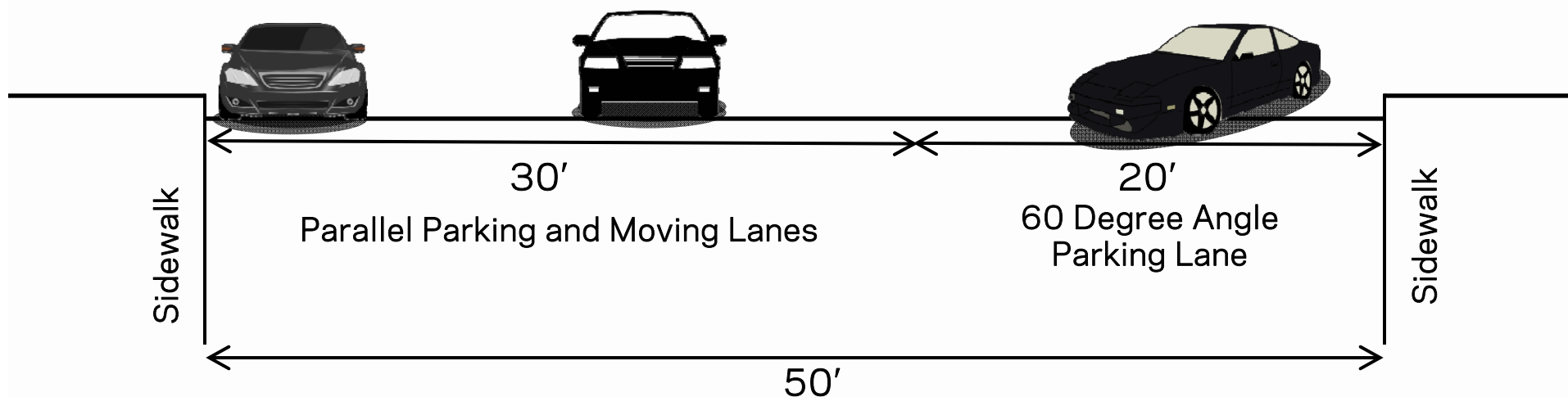


Proposed



109th Street between Second and Third Aves

Existing



Proposed

