

NYC

**Taxi & Limousine
Commission**



tlc NYC TLC
edu Education
Services Unit

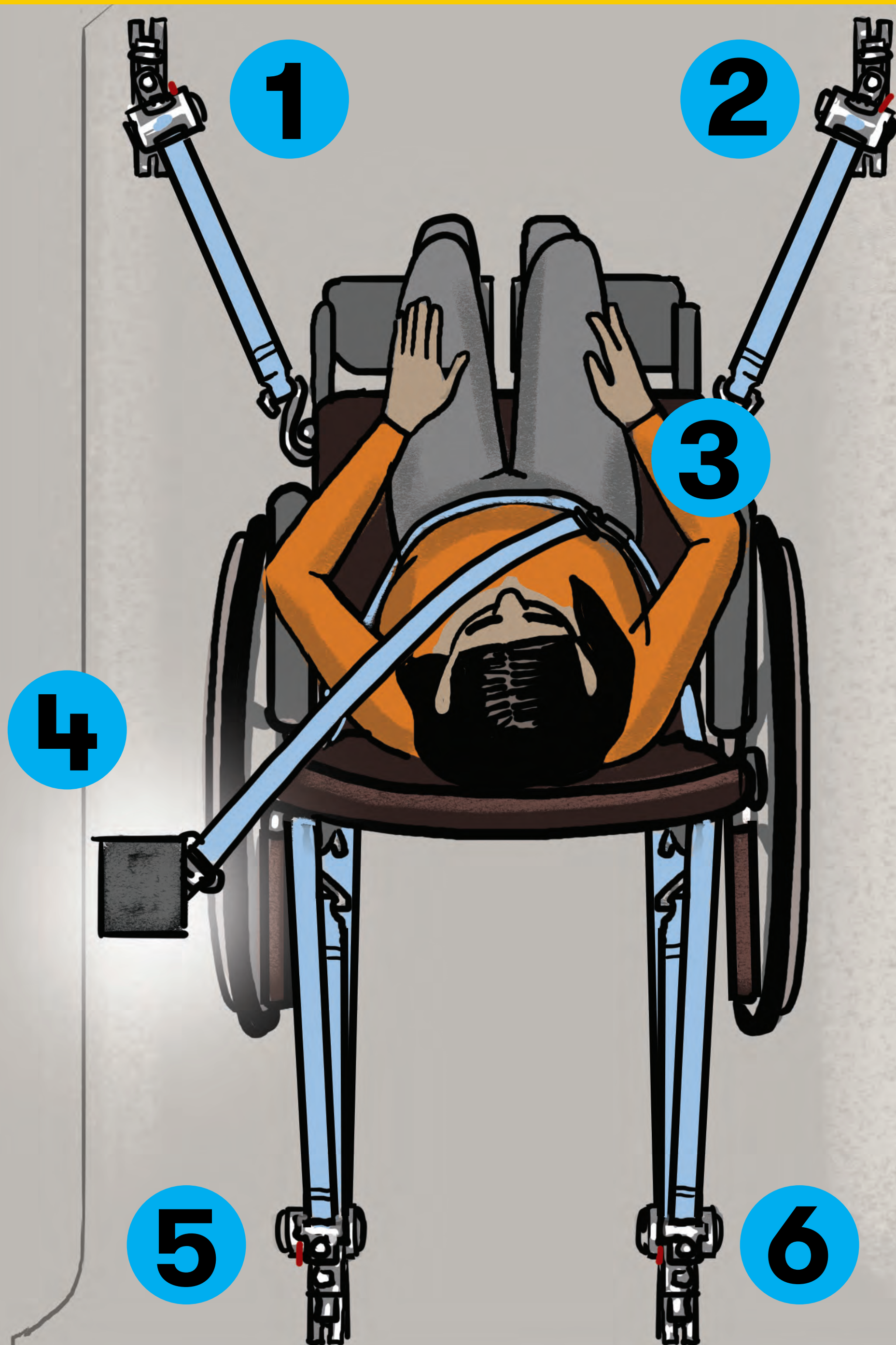
Wheelchair Accessible Vehicle How-To

Helpful Tips



*Don't rush!
Take your time.*

*Use all six securement straps.
Do not use broken equipment.*



***Tell your
passengers
what you are
doing.***



***Listen to your
passengers.***



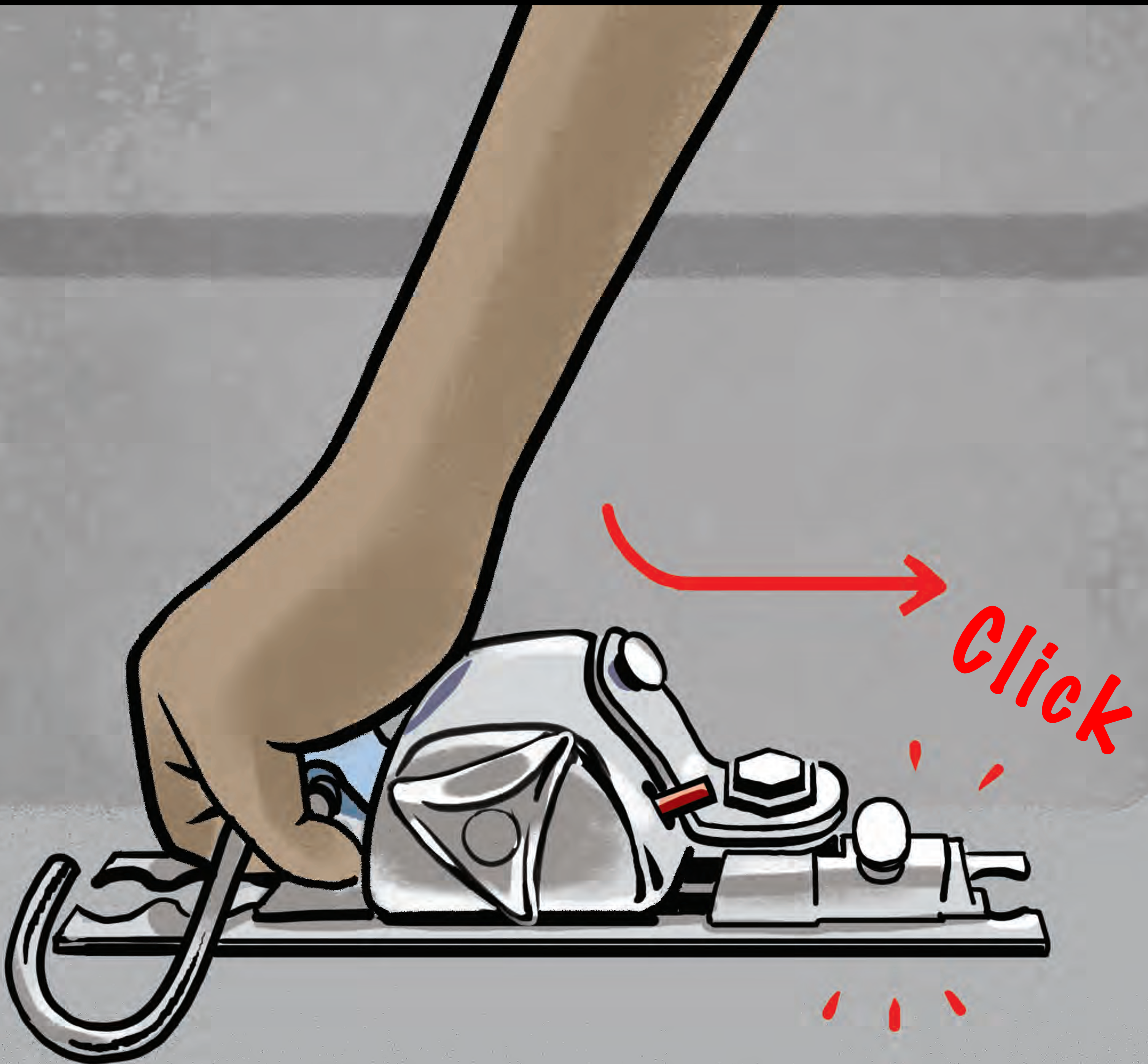
***Keep your
vehicle clean.***



Onboarding Steps

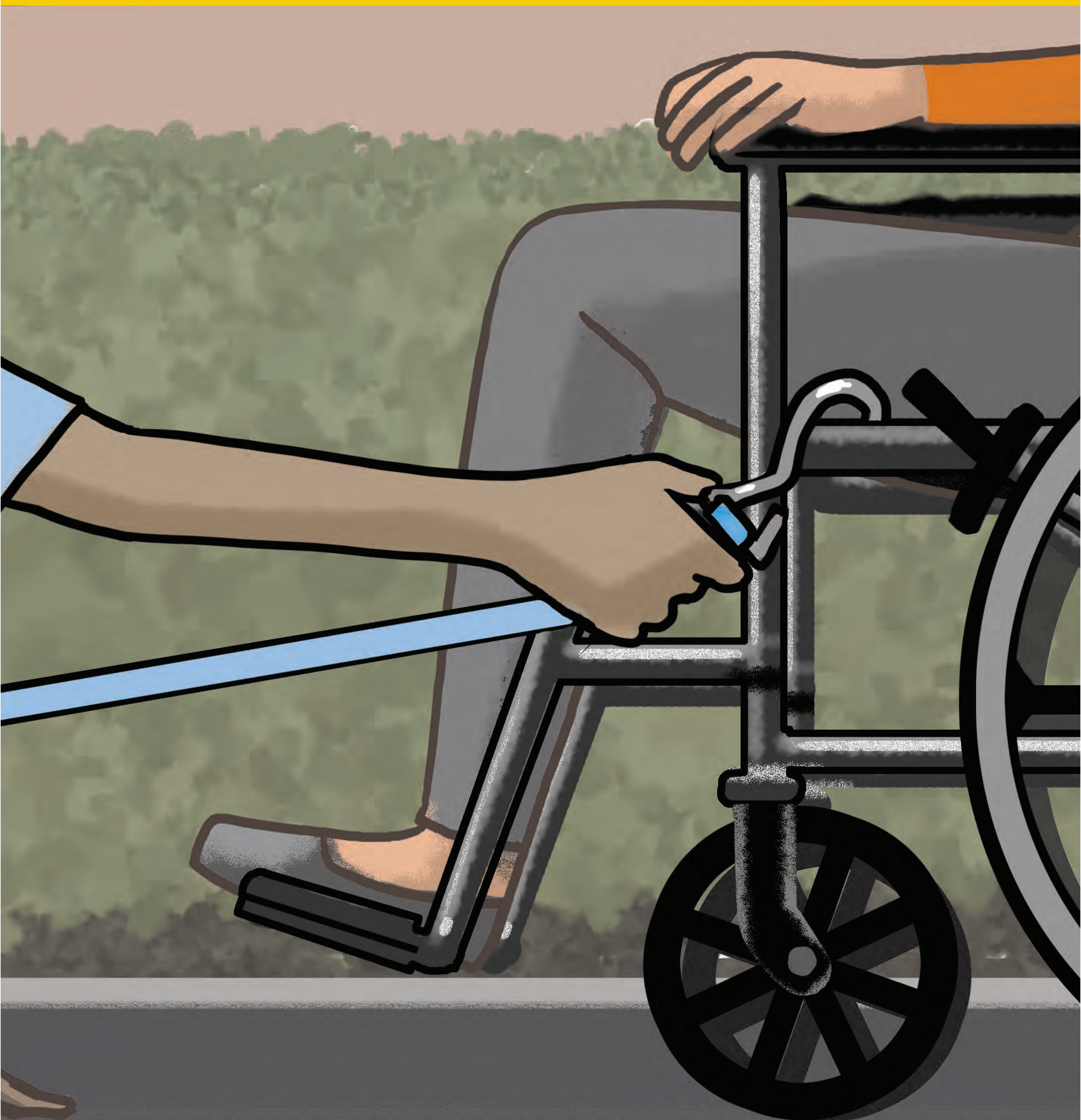
1

Slide front securement into tracks.



2

Attach hook to
securement spot.



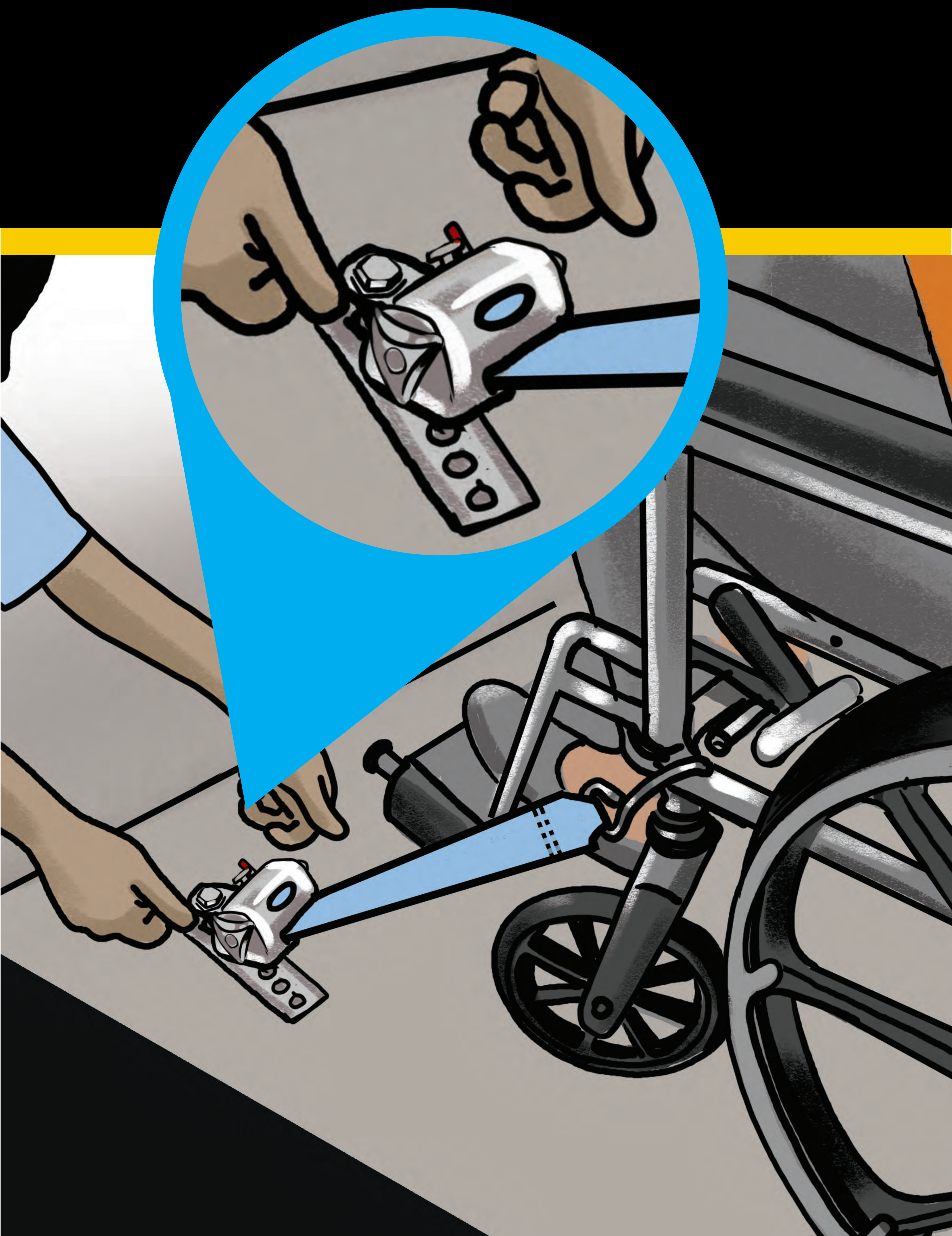
3

Assist passenger into vehicle.



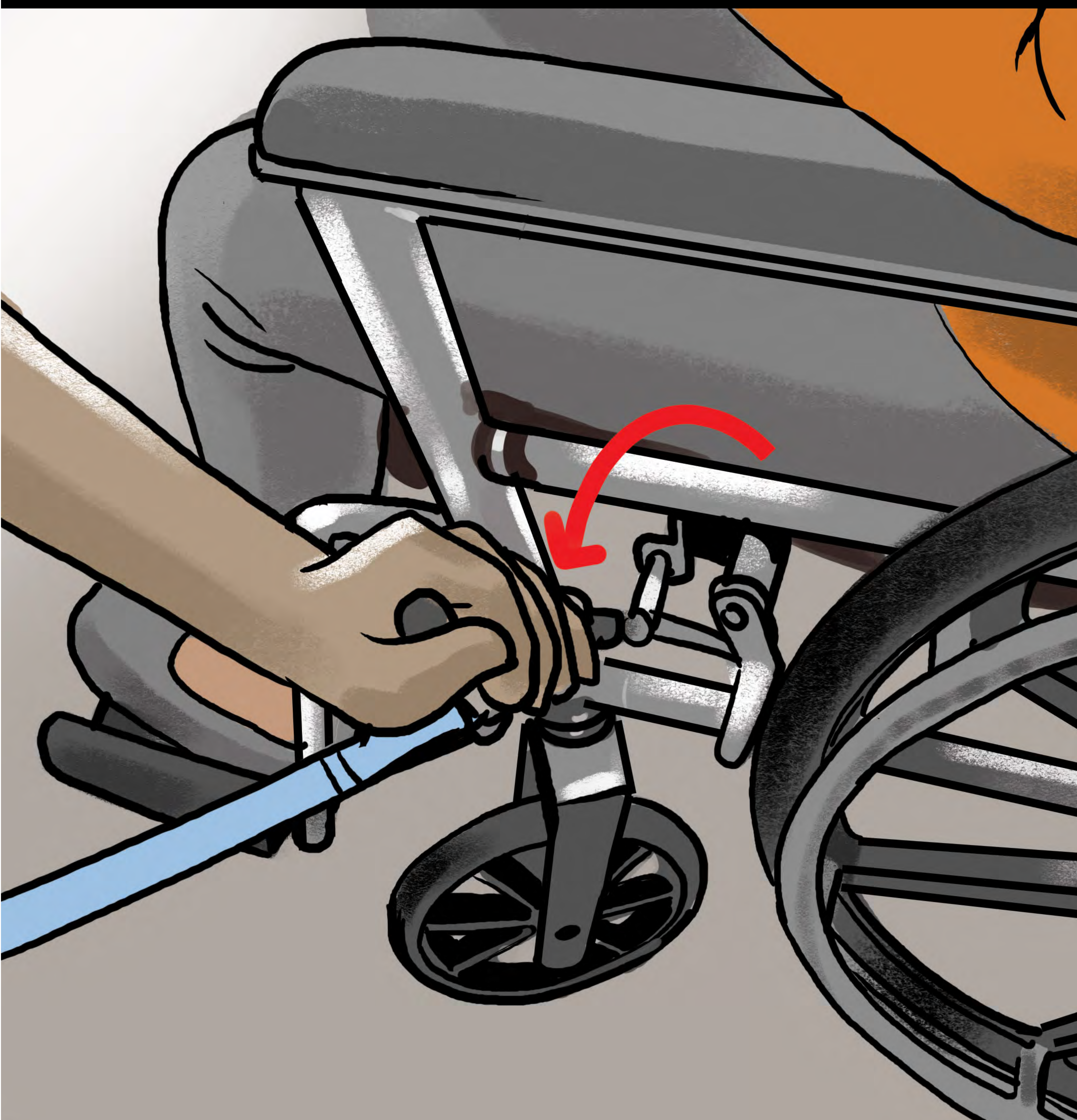
4

Tighten front securements.



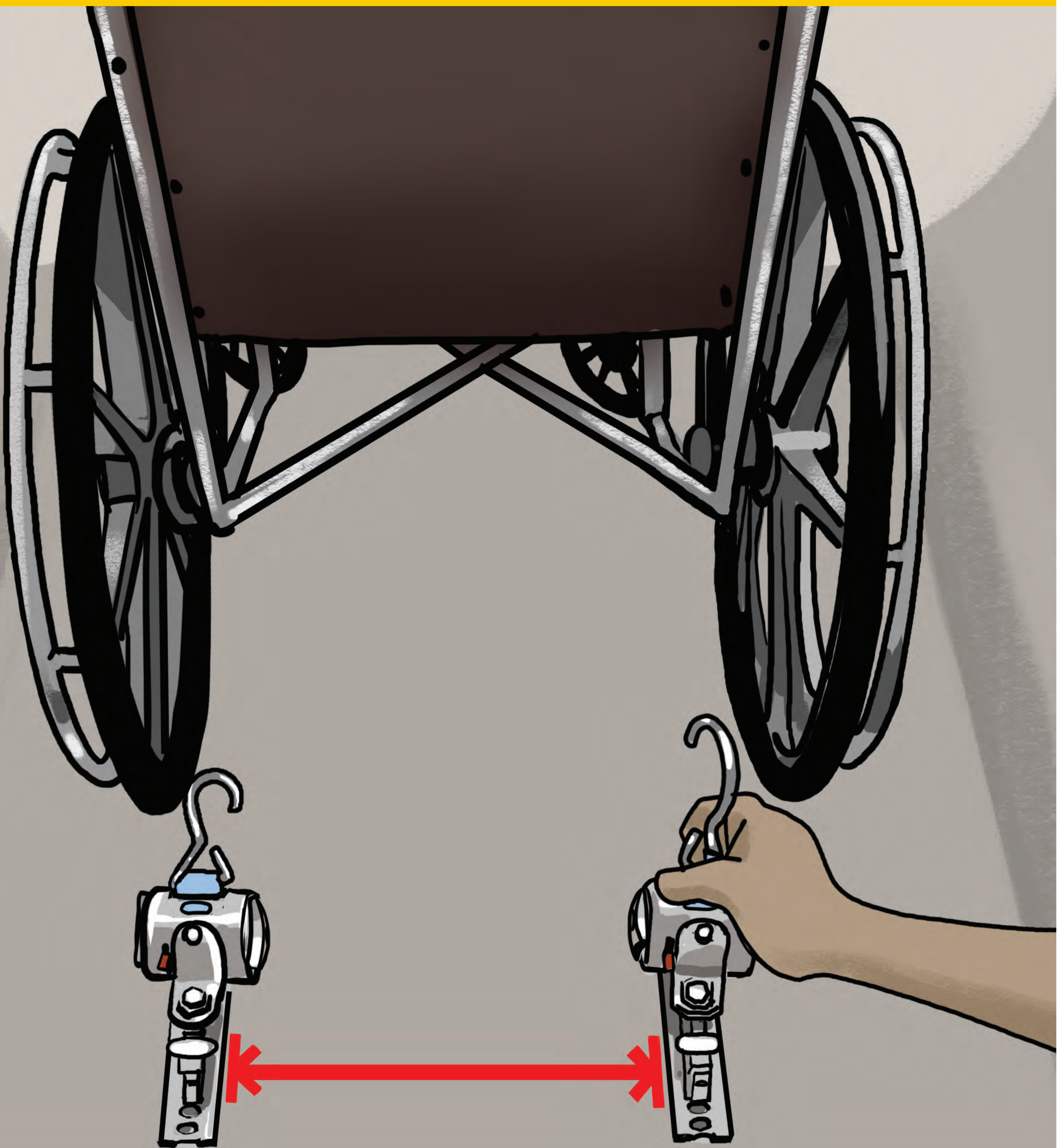
5

Lock the brakes.



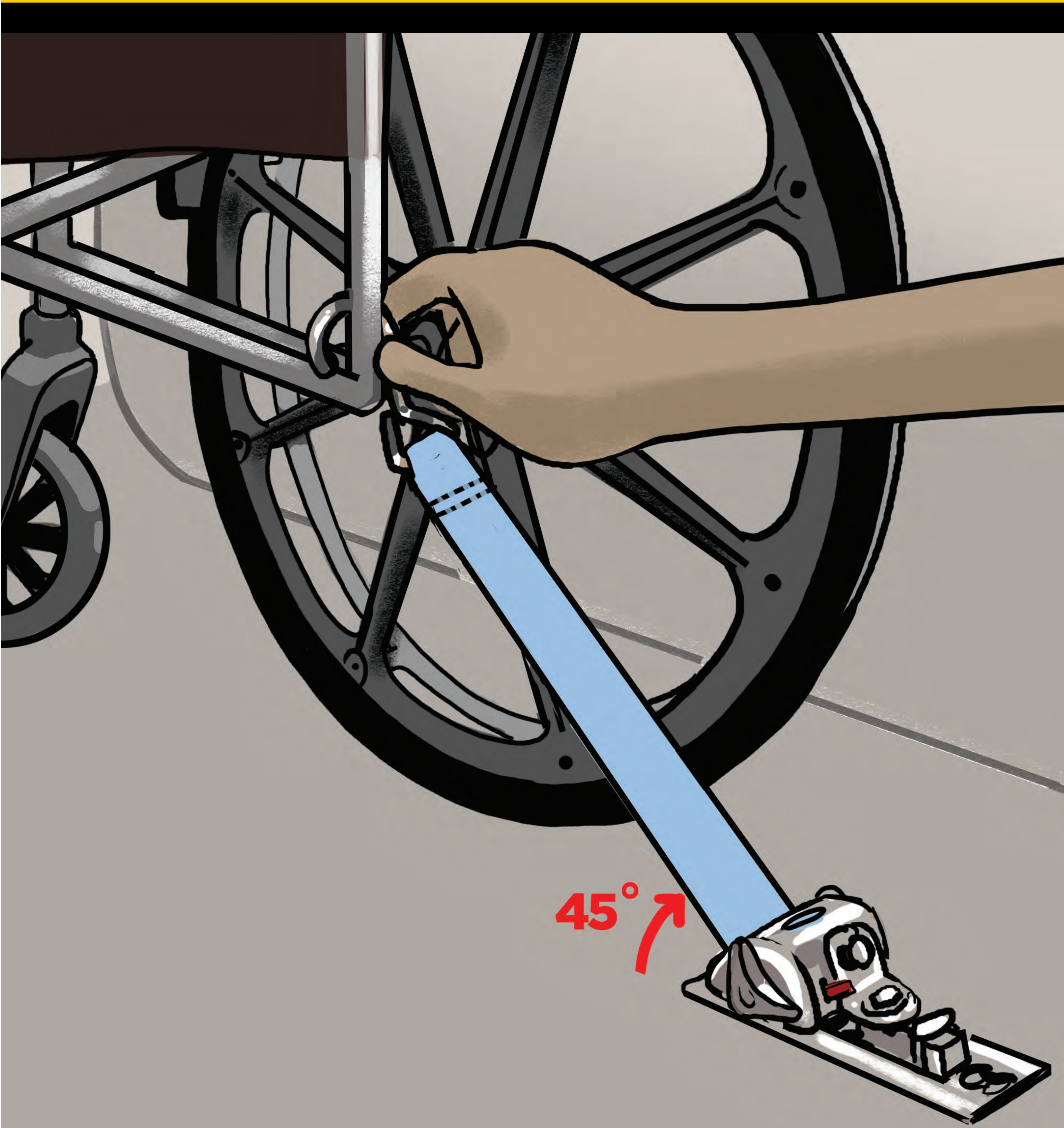
6

Slide back securements
into tracks.



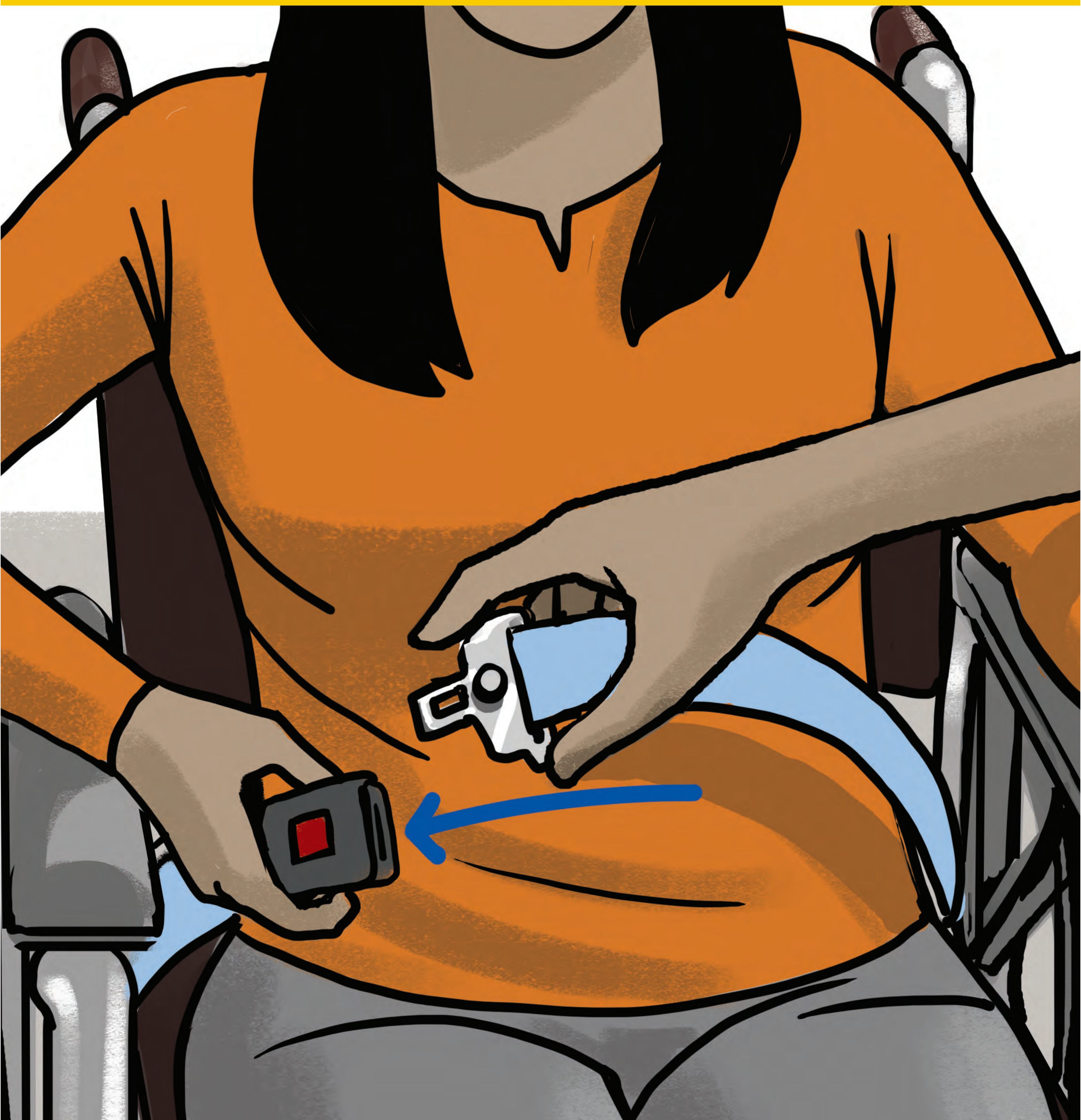
7

Hook straps onto back of wheelchair and tighten.



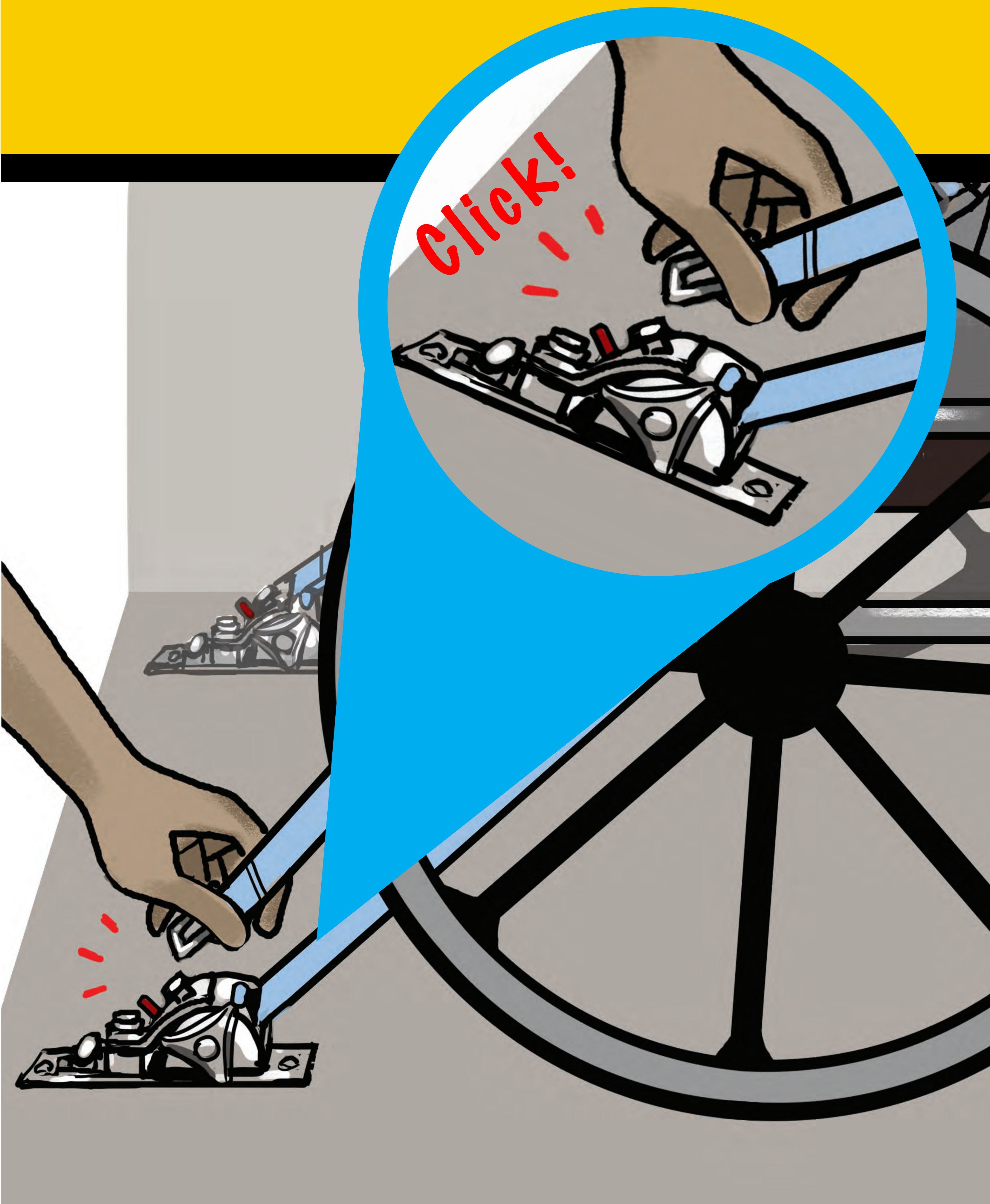
8

Place lap belt across passenger's lap. The red button should be at right hip.



9

Connect lap belt to back
securements.





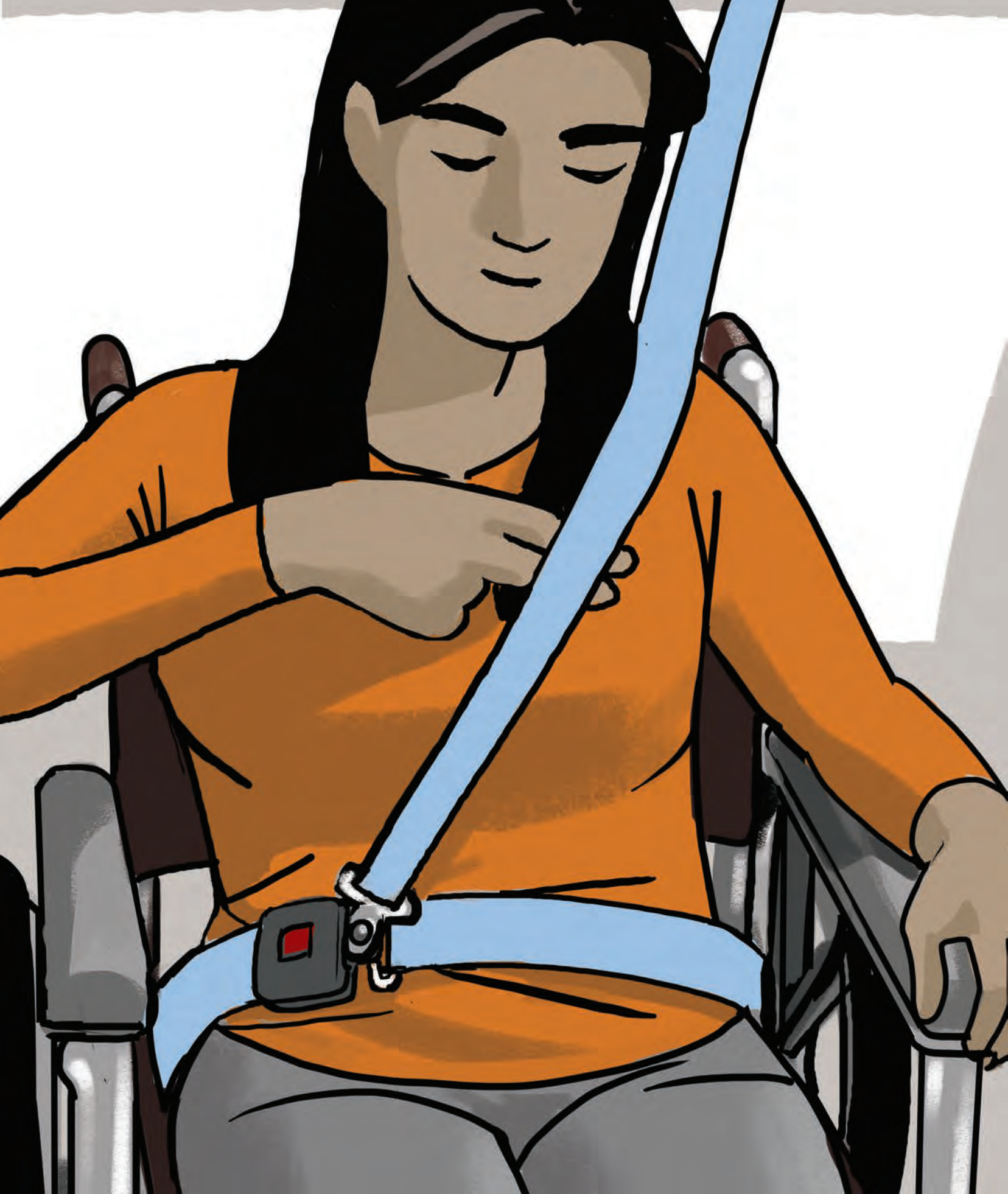
10

Tighten the lap belt.



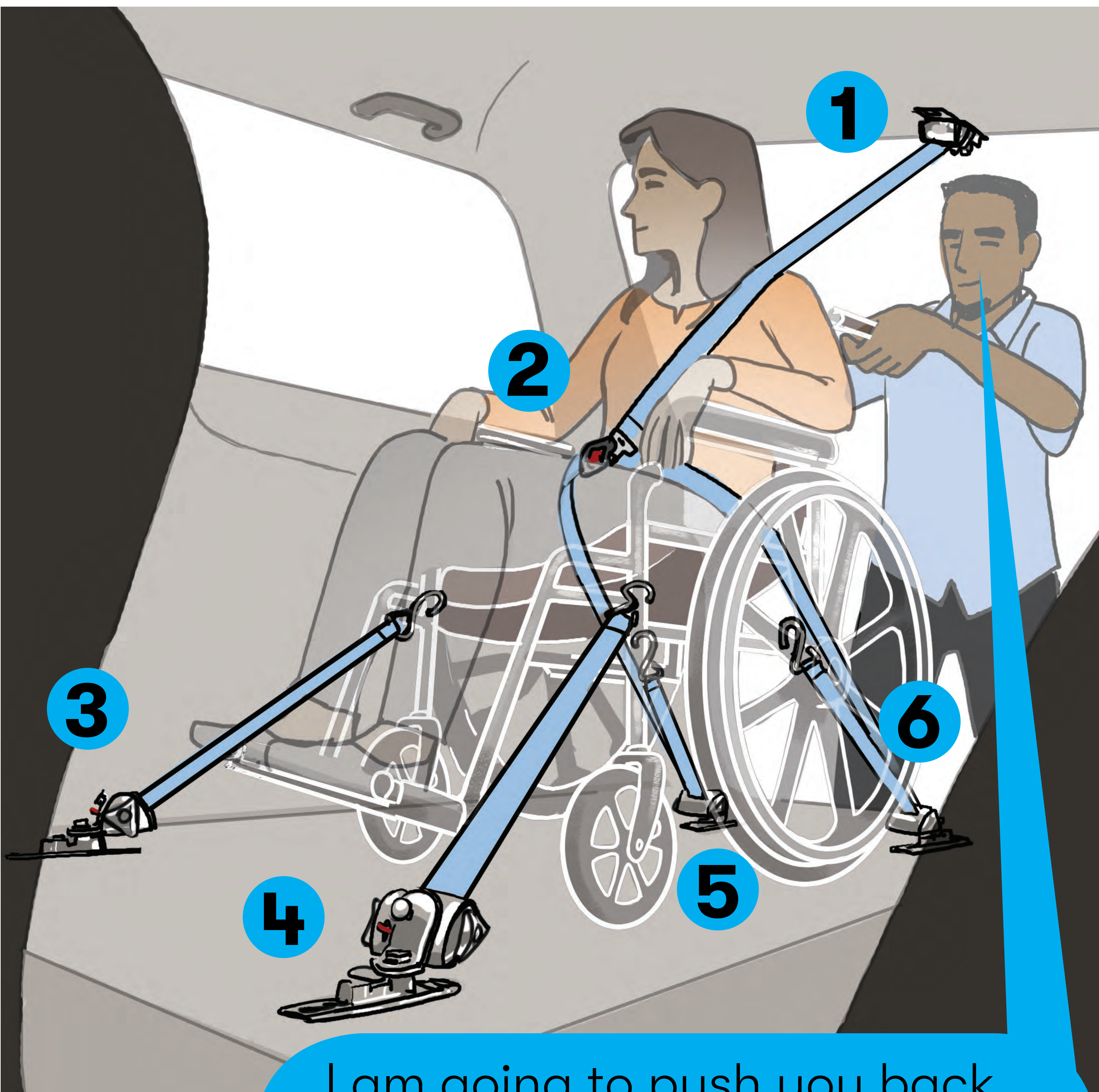
11

Connect shoulder strap.



12

Tighten the shoulder strap.



I am going to push you back and forth gently to make sure you are secured.

Test the securements—
gently push and pull the
wheelchair to make sure the
securements keep the
passenger in place.

**You're
Ready
To
Ride!**

tlc NYC TLC
Education
edu Services Unit

NYC[®]
**Taxi & Limousine
Commission**