

Bike Lanes: Rules and Enforcement

New York's streets are designed to ensure that everyone—drivers, pedestrians and cyclists—has a safe, appropriate place on the road.

- It is illegal to drive, park or stop in bike lanes or paths. (\$115 fine)
- Yield to cyclists when turning.
- Leave a safe distance when passing cyclists.
- "Dooring" kills. Look for cyclists before opening your door.



Bike Paths:

A "floating" parking lane separates cyclists from moving cars. See inside for more information.



Bike Lanes:

Painted lines and striped buffers separate bicycle and vehicular traffic.



Bike Routes:

Painted bicycle symbols and chevrons indicate shared lanes.

Bus Lanes: Rules and Enforcement

Drivers must stay out of an active bus lane except to:

- Make the next available right turn or
- quickly drop off or pick up passengers

If you drive, park, or stand in a bus lane during hours of operation you face fines ranging from \$115 to \$150. The City enforces bus lanes with video cameras and increased police enforcement.



A curbside bus lane is a travel lane for buses at the curb. Parking and standing at the curb are not allowed during the hours the bus lane is in effect.



An offset bus lane is a travel lane for buses one lane away from the curb. This makes parking and standing at the curb still possible.

Para información en español, por favor visite www.nyc.gov/brt o llame al 311



www.nyc.gov/dot

Learn the Lanes

Bike and bus lane rules every taxi driver should know



www.nyc.gov/dot

On Streets with a Protected Bike Path:

How do I drop off/pick up passengers?

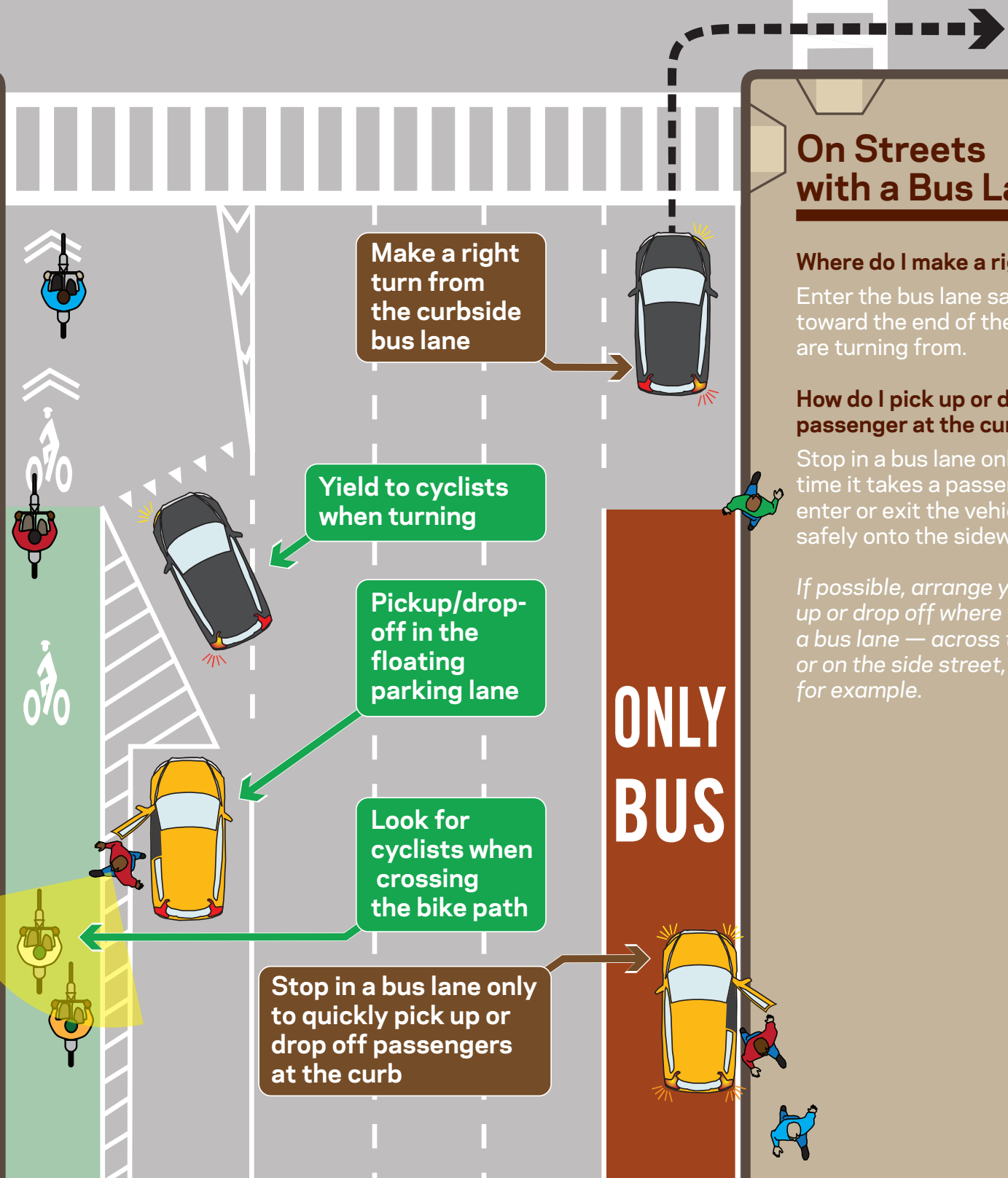
Stop in the floating parking lane to pick up or drop off passengers. Do not stop in the mixing zone or block the crosswalk.

How can I turn across the bike path?

Use a "mixing zone" to merge into a bike path and turn across it. Obey turn signal arrows if available.

Where can I park?

Park in the "floating" parking lane. This lane separates cyclists from moving vehicles.



On Streets with a Bus Lane:

Where do I make a right turn?

Enter the bus lane safely toward the end of the block you are turning from.

How do I pick up or drop off a passenger at the curb?

Stop in a bus lane only for the time it takes a passenger to enter or exit the vehicle and get safely onto the sidewalk.

If possible, arrange your pick up or drop off where there isn't a bus lane — across the street, or on the side street, for example.



ONLY BUS