

TLC Alerts Driver Licensees to Bus Lane Rules and Enforcement

David Yassky
Commissioner

Office of Public Affairs
40 Rector Street, 5th Floor
New York, NY 10006

+1 212 676 1013 tel
+1 212 676 1101 fax



Taxicab and For-Hire Vehicle Drivers **must** stay out of an active bus lane except to:

- **Turn right at the next corner, or**
- **Quickly drop off or pick up passengers**

If you drive, park, or stand in a bus lane during hours of operation you face fines ranging from \$115 to \$150. The City has begun enforcing bus lanes with video cameras and increased police enforcement.



Follow the Rules When Entering a Bus Lane

How should I pick up or drop off a passenger at the curb on the street with a bus lane?

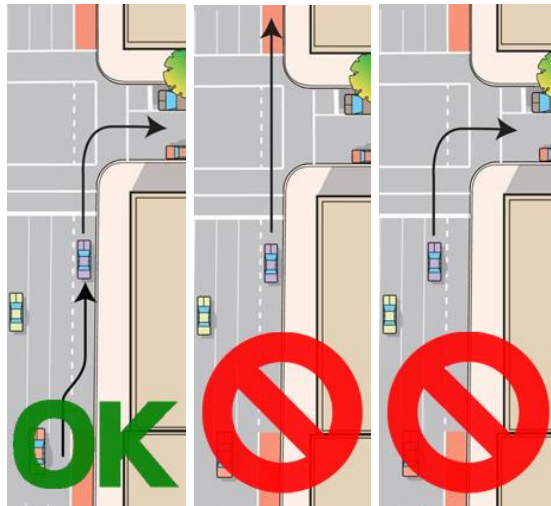
If possible, pick up or drop off where there *isn't* a bus lane – across the street, or on the cross street, for example. However, you may stop in an active bus lane for the time it takes for a passenger standing at the curb to enter or a passenger to exit the vehicle and get onto the sidewalk. Do

what you can to help your passenger quickly enter or exit your vehicle, including quickly helping to place or remove items from the trunk if necessary.

How should I make a right turn on the street with a bus lane?

Unless otherwise restricted, vehicles are permitted in the bus lane to make the next available right turn. To make a right turn from a bus lane, enter the bus lane safely toward the end of the block you are turning from. New bus lanes are being painted to make this clear and show you where it is best to enter the lane.

With an “offset” bus lane (the lane next to the curb lane), there are some locations where there is a curbside right turn lane before an intersection. Drivers should merge through the bus lane and use the curbside lane to make their turn, so that they do not block the bus.



Learn more about [bus lane rules and regulations](#).

Learn more about changes to driving and parking on First and Second Avenues for [Select Bus Service](#).

The information on this page has been collected in a brochure available in several languages.

- [Information on bus lane enforcement in English](#)
- [Información sobre el carril de autobús en español](#)
- [Информация на русском языке об автобусных полосах](#)
- [中文公車車道資訊](#)
- [한국어 버스 노선 정보](#)
- [Enfòmasyon sou liy otobis nan lang Kreyòl Ayisyen](#)
- [Informazioni sulla corsia riservata agli autobus in italiano](#)