

# The North Shore Greenway & Greenbelt Park Committee, Community Board 1

Bringing the heritage of our waterfront to life!





# The North Shore Greenway Trail Spans 7.7 Linear Miles





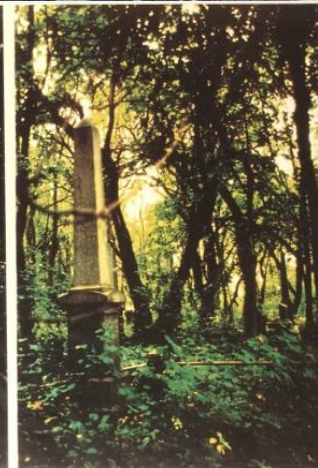
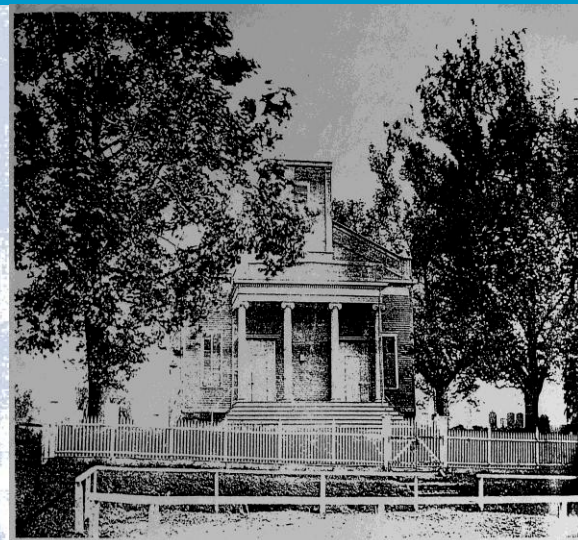
# Now it's up to us to complete the rest!





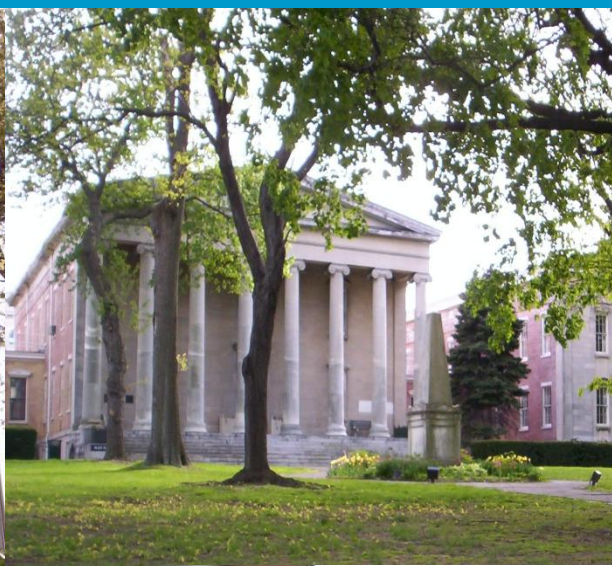
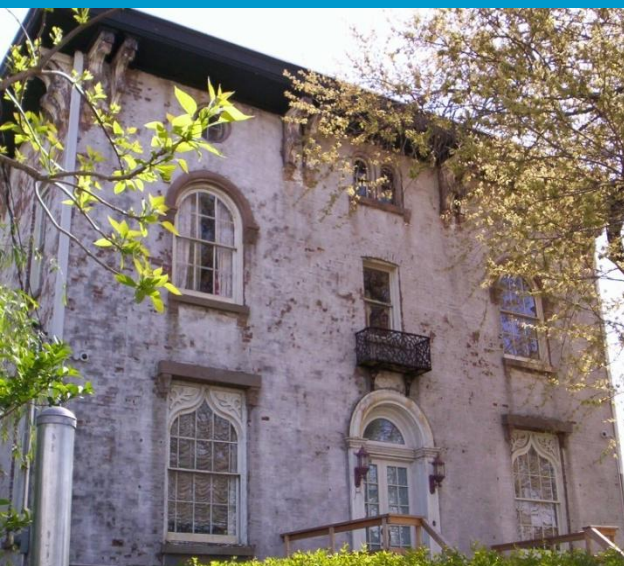
# The North Shore Waterfront is rich in history!

Historic West Brighton





# The North Shore waterfront is lined with historic homes.



*"It's saving your neighborhood, saving part of American history and saving New York history."*  
— Homeowner Linda Eskenas



STATEN ISLAND ADVANCE/NICHOLAS FEVELO

The DeGroot House, at 1674 Richmond Terr., was built around 1850. Landmark status protects the residence, an unusual example of Second Empire style, from demolition.

## Pre-Civil War home receives landmark status from city

Preservation panel votes unanimously to grant designation to DeGroot House, West Brighton

By KAREN O'SHEA and MAURA YATES  
STATEN ISLAND ADVANCE

A rare example of a surviving Staten Island waterfront mansion from the pre-Civil War era was designated a landmark yesterday by the New York City Landmarks Preservation Commission.

The commission voted unanimously to so designate the DeGroot House at 1674 Richmond Terr., West Brighton, which was built around 1850. Landmark status protects the house from demolition.

"I think it's an honor," Linda Eskenas, who has lived in the house for two decades, said yesterday of the designa-

Ms. Eskenas, a community activist, said the area where her house is located was once a literary and abolitionist enclave but had been degraded over the years by industrial uses along the waterfront and inappropriate residential development upland.

But now, she said, change is afoot. As evidence, she noted the 2003 purchase of the former Blissenbach marina and dry dock just across Richmond Terrace by the Port Authority of New York and New Jersey, which turned over control of the site to the city Parks Department.

Ms. Eskenas and other community leaders lobbied hard for the state to buy the 9.5 acres of waterfront land for future use as a park.

The DeGroot House, with its convex mansard roof and gabled dormers, is an unusual example of Second Empire style. Grand homes of this type lined Richmond Terrace

stewardship of the owner, and now because of our actions today, all New Yorkers can continue to enjoy this beautiful Second Empire-style house on Staten Island," said Landmarks Preservation Commission chairman Robert Tierney.

The dark wood-shingled home is of architectural significance because the convex mansard roof is a rare find. Most mansard-style roofs were either concave or straight-sided. The roof of the DeGroot house still has its hexagonal slate shingles.

The interior features floor-length parlor windows, a double-door entryway, heavy molded cornices and scrolled brackets.

The home was built by John DeGroot, who made his living at a nearby textile dyeing business, one of the island's earliest industries.

Karen O'Shea covers real estate news for



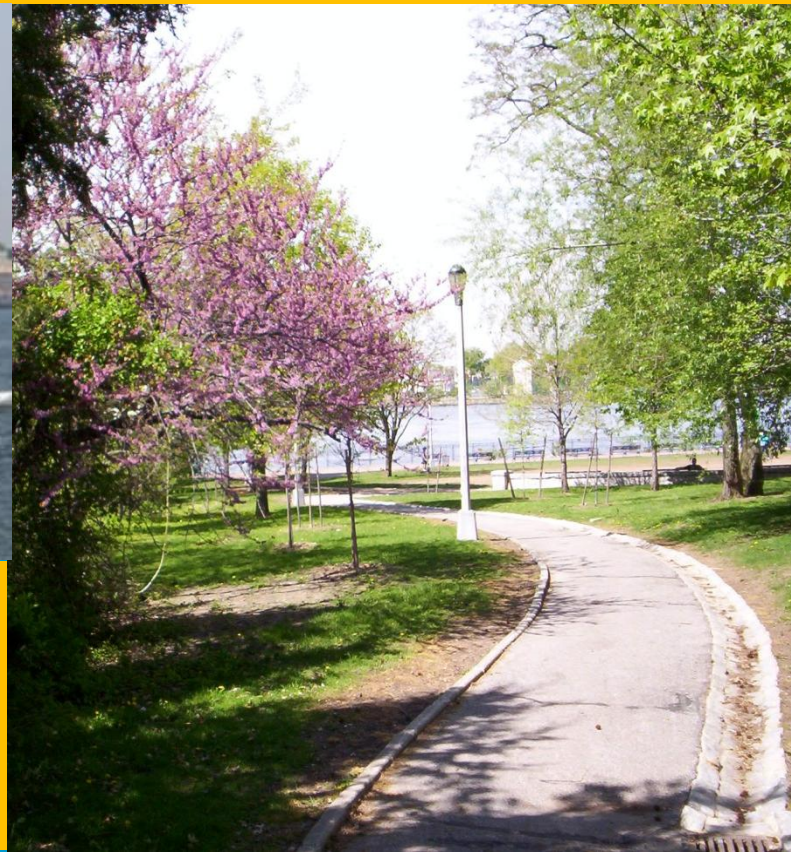


# The completion of the North Shore Greenway Trail will provide:

**Economic development by connecting 2 million tourist who ride the ferry each year with a walking trail along the waterfront and .....**



**Environmental health by preserving our marshes and estuaries along the trail.**

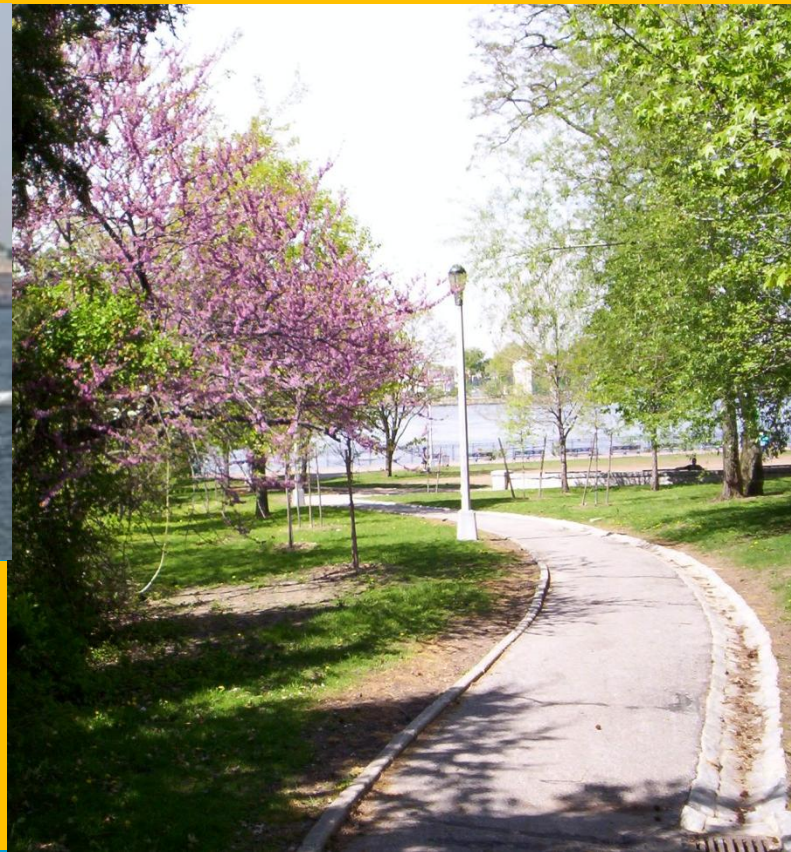


# The completion of the North Shore Greenway Trail will provide:

**Economic development by connecting 2 million tourist who ride the ferry each year with a walking trail along the waterfront and .....**



**Environmental health by preserving our marshes and estuaries along the trail.**





Phase I – Sidewalk improvements from Jersey Street to Atlantic Salt – 1/10<sup>th</sup> miles of distinctive sidewalk, signage, seating and lighting. Approximate Cost: \$287,475

This

could turn into

This





# Phase II – Sidewalk improvements along Atlantic Salt to Clinton Avenue/Snug Harbor. 1/3<sup>rd</sup> mile of distinctive sidewalk, lighting, seating, signage.

Cost: \$1,207,391





Phase III – Snug Harbor @ Clinton Avenue to  
Bard Avenue. .5 miles of trail including ramp,  
lighting, signage, seating, and plantings.

Cost: \$1,437,370

This

could turn into

This





Phase IV - Con Edison @ Bard Avenue to Caddell Dry Dock through Van Street - .625 miles of trail including plantings, seating, signage, lighting and sidewalk. Cost: \$1,897,328.40

This

could turn into

This



Proposed Path at  
Con Ed Parking Lot



Queens East River



Phase V - Former Blissenbach Marina, heart of waterfront @ West Brighton - 9.5 acres of plantings, seating, rip-rap, lighting, railings, signage, trees, public restrooms with the small vessel docks and restaurant concessions. Cost: \$12,574,948

This

could turn into

This



**Brooklyn Bridge Park**

(c) MICHAL VAN VALKENBURGH ASSOCIATES



Phase VI- ROW Overpass from Taylor St. to  
Pt. Richmond Ave. - .5 miles of trail with  
decking, seating, signage, lighting and  
plantings. Cost: \$1,724,844

This

could turn into

This





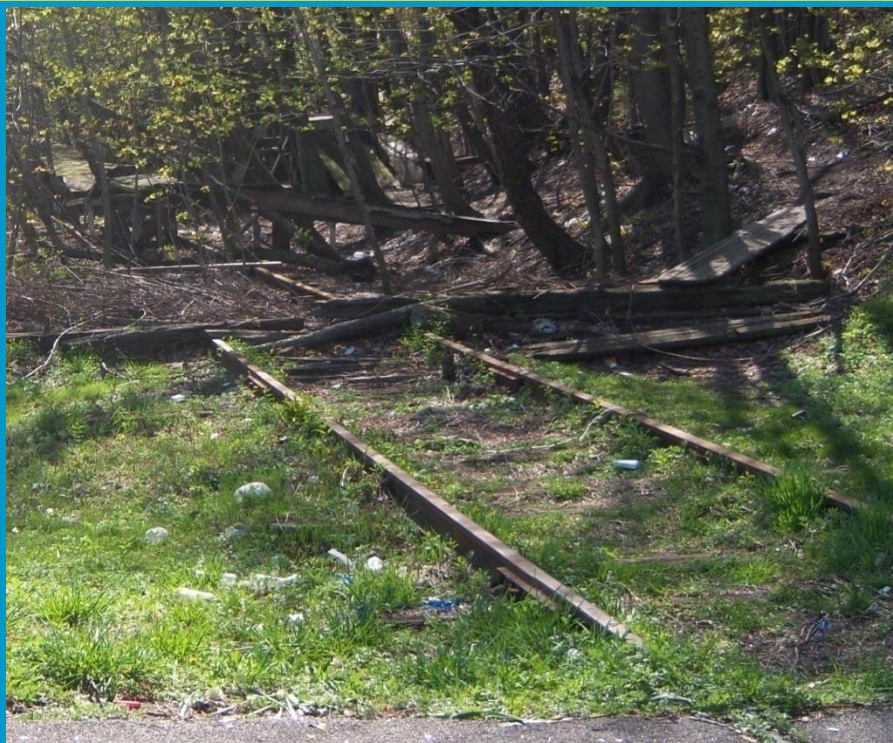
Phase VII - Port Richmond Avenue ROW  
overpass to Mariners Marsh - 1.7 miles of  
trail with signage, lighting and plantings.

Cost: \$6,036,954

This

could turn into

This



Hudson River Park Trust



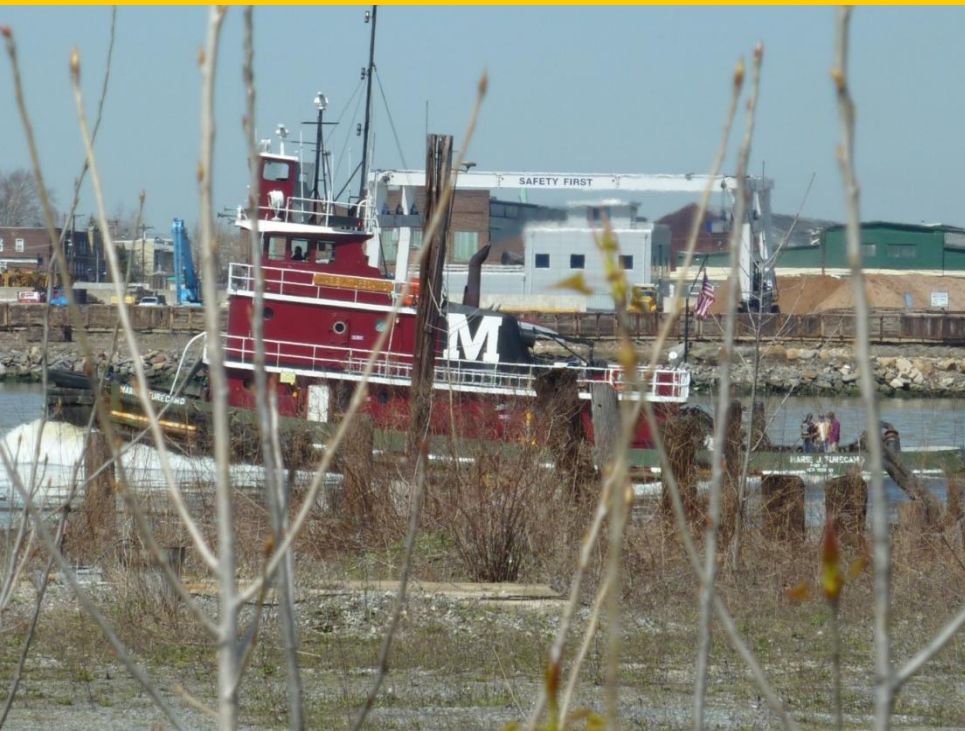
Phase VIII - Pocket Park @ Port Richmond Ave  
and sidewalk from Pt. Richmond Ave to Van  
Name St. 1.1 miles of planting, seating, lighting,  
signage and sidewalk

Cost: \$4,449,688

This

could turn into

This



Grand Ferry Park, Brooklyn



Phase IX-Pocket Park bet. Van Name & Van Pelt and sidewalk from Van Pelt St. to Arlington Marsh. 1.4 miles of seating, path, lawn & lighting Cost: \$5,312,110

**This**

**could turn into**

**This**



**Manhattan Avenue Street  
Park**



Phase X – Pocket Park along perimeter of  
Arlington Marsh. 1/3<sup>rd</sup> miles of path,  
lighting, signage and seating.

Cost: \$3,149,896

This

could turn into

This





Phase XI - Mariners Marsh Trails and connections to ROW Bike Trail & Goethals Bridge. 2/6<sup>th</sup> miles of trail, lighting and seating.  
Cost: \$2,299,792

This could turn into This





Total Cost of 5 miles of improvements:  
\$44,510,000

High Line	\$150 million
Brooklyn Bridge Park	\$154 million
7 unimproved acres in Coney Island	\$ 97 million
Hudson River Park Trust	\$400+ million



# Conclusion

This trail and the development of pocket parks:

- Will restore our important shore road of Richmond Terrace
- Bring back and restore our valuable, historic waterfront communities.
- Signal the rebirth of Staten Island's North Shore as an important cultural and environmental asset of NYC.
- This cost represents the building of many parks and trails for the sustained health and well-being of our communities.
- It will be an economic, environmental and cultural renaissance to Staten Island in a time of fiscal crisis.



# Conclusion

This is one of New York's  
greatest resources and  
it will be one of its  
greatest successes



This is the remergence of the North Shore of Staten Island. As the Indian legend says, the symbol of rebirth of life after the floods "as the turtle rose from the water." Let us hope soon as the Song of Solomon says, that "the voice of the turtle is heard in our land."

Bringing the heritage of our waterfront to life!

