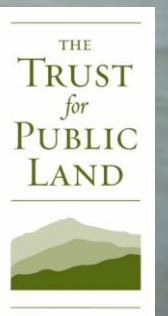


CREATING PUBLIC ACCESS AT THE NORTH SHORE PUBLIC ACCESS STATEN ISLAND, NEW YORK

October 18, 2011

City of New York Parks & Recreation

Consultant: The RBA Group







1- ACCESS ROAD LOOKING NORTH



2- GATEWAY LOOKING SOUTH



3- ACCESS ROAD AND PARK FACILITY BUILDING



4- PARK AREA LOOKING WEST



5- PARK AREA LOOKING EAST



6- PARK AREA LOOKING SOUTHEAST



7- PIERS LOOKING SOUTH

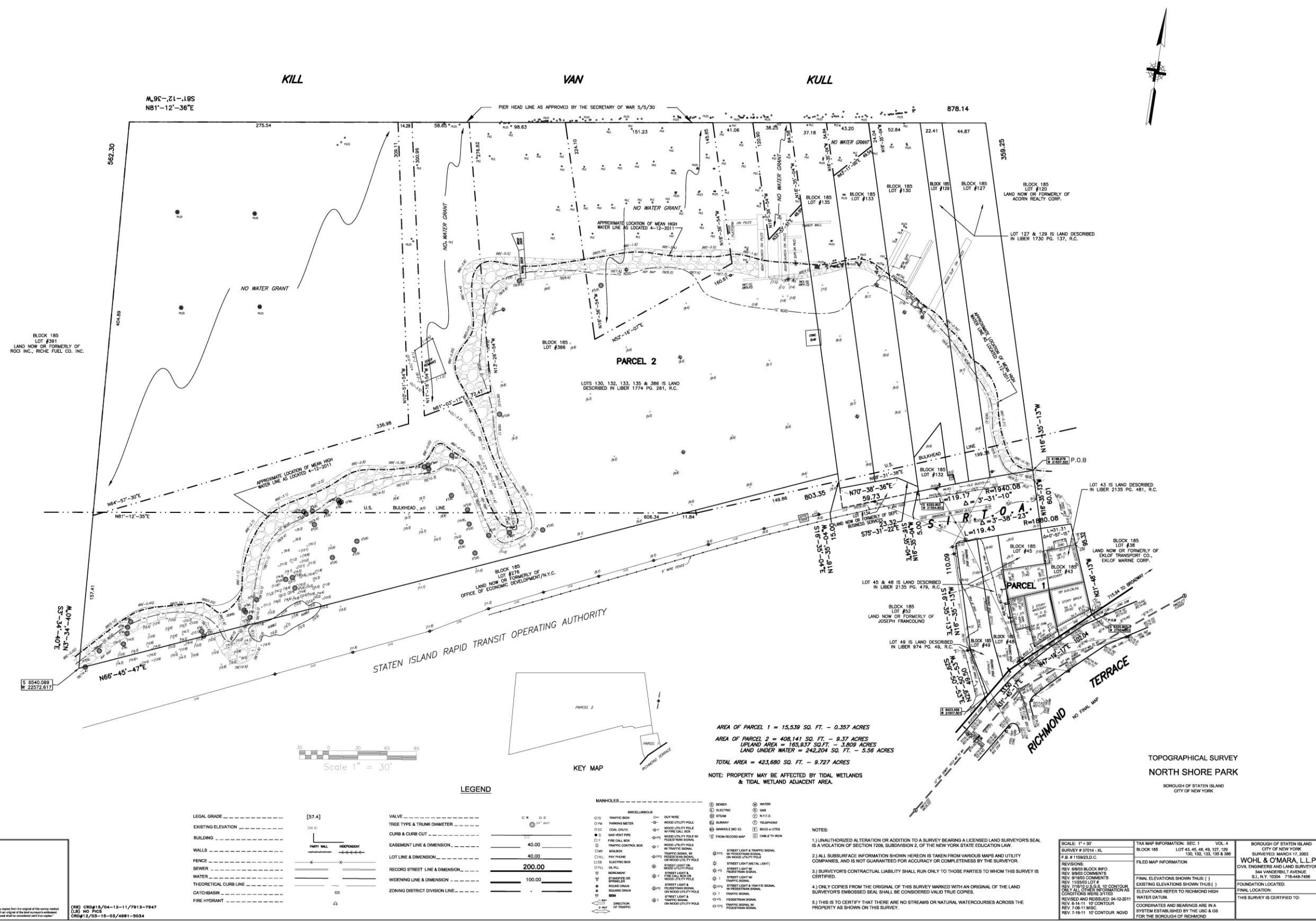


8- PIERS LOOKING WEST



9- PIERS LOOKING EAST

NOTE: ADD 2.1' TO ALL ELEVATIONS TO CONVERT
FROM RICHMOND BOROUGH DATUM TO NAVD 88.







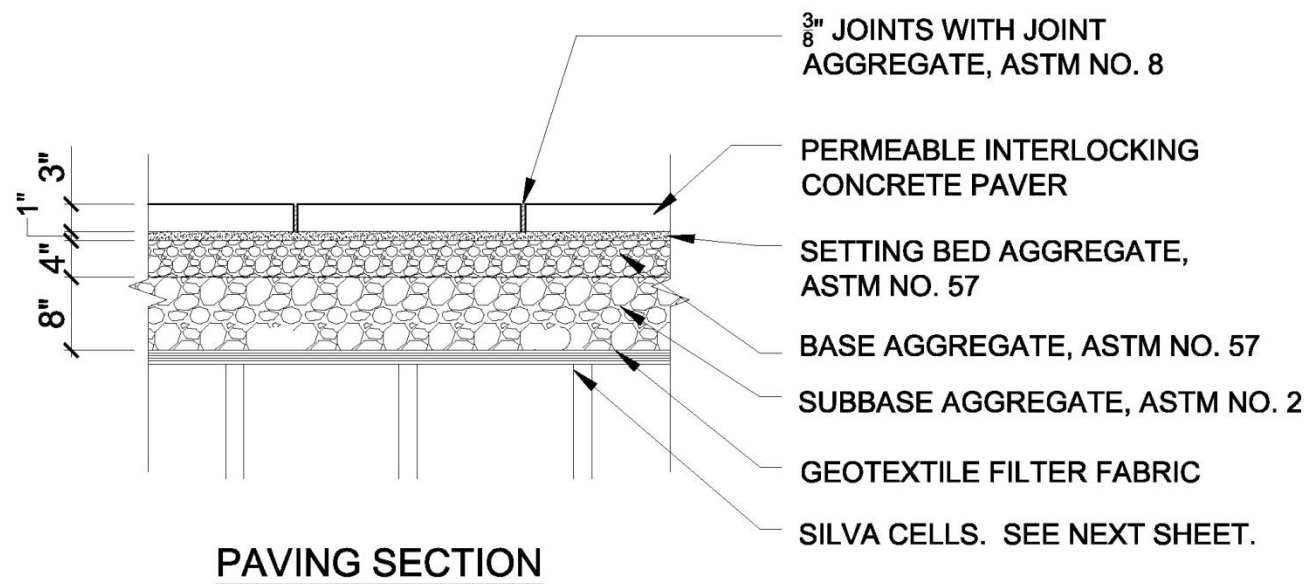
SECTION A - A'
SCALE = 1:20



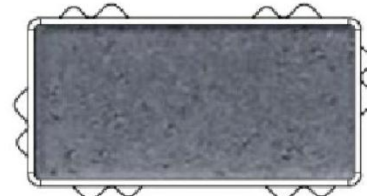
SECTION B - B'
SCALE = 1:20



SECTION C - C'
SCALE = 1:10



THICKNESS: 3 1/8"
LENGTH & WIDTH: 10" X 10"



THICKNESS: 3 1/8"
LENGTH & WIDTH: 10" X 5"



3/8" ADA COMPLIANT PERMEABLE JOINT WITH AGGREGATE



OLMSTEAD CENTER PARK AND RECREATION CENTER, QUEENS, NEW YORK (PERMEABLE PAVERS)



1964 WORLD'S FAIR BENCH AND 7' HIGH STEEL PICKET FENCE



4' HIGH STEEL PICKET FENCE

RIPARIAN ZONE

Riparian zones are the narrow strips of land that border creeks, rivers, and other bodies of water characterized by wetland vegetation. Although riparian zones may occupy only a small percentage of a watershed, they represent an extremely important component of the landscape's ecology. Riparian zones are significant in ecology due to their role in soil conservation, biodiversity, and the influence they have on aquatic ecosystems.

Legend
Sediment input into waterway
Nutrients put into waterway
Contaminants

Water Quality:
Riparian zones are some of the most biologically productive ecosystems and serve multiple functions even within an urban landscape. Riparian vegetation shades streams and moderates water temperatures while promoting bank stability and fostering wildlife habitats. In addition, densely vegetated riparian areas buffer the input of sediment, fertilizers, pesticides, herbicides, and other contaminants from runoff generated on adjacent lands. This filtering and moderating role of riparian zones protects aquatic habitats as well as downstream environments.

Riparian Wildlife:
Riparian zones are utilized by wildlife as a "natural highway" to journey up and down the river during daily movements as well as seasonal migrations. Moreover, some animal species are completely dependant on riparian corridors to provide food, cover, and water, without the corridors these animals would not survive. Along the Bronx River, riparian zones provide important habitats for a variety of resident and migratory birds, many of which are listed in the illustration to the right.

TREES:
American Sycamore
Black Oak
Black Willow
Cottonwood
Gray Birch
Ironwood
Northern Red Oak
Red Maple
River Birch
Swamp White Oak
Sweet Birch
Sweet Gum
Tulip Tree

SHRUBS:
Arrowwood
Viburnum
Fetterbush
Hardhack
Highbush-blueberry
Northern Bayberry
Pussy Willow
Red-osier Dogwood
Sheep Laurel
Silky Dogwood
Spicebush
Swamp Azalea
Sweet Pepperbush

HERBACEOUS:
Boneset
Lizard Tail
Marsh Marigold
New England
Swamp Milkweed
Swamp Rose Mallow
Swamp Sunflower
Switchgrass
White Beardtongue

WILDLIFE:
Mallard
Mute Swan
Painted Turtle

WILDLIFE:
Blue-Winged Warbler
Brown Thrasher
Common Yellow Throat
Double-Crested Cormorant
Eastern Chipmunk
Eastern Cottontail
Muskrat
Oriole
Red-Bellied Woodpecker
Red-Tailed Hawk
Red-Winged Blackbird
Song Sparrow
Sparrow
Yellow Warbler

WILDLIFE:
Bullfrog
Great, Snowy, & Little Blue Egret
Green Heron
Laughing Gull
Marsh Wren
Swamp Sparrow
Tree Frog
Willow Fly Catcher
Yellow & Black-Crowned Night-Heron

INTERPRETIVE SIGN GRAPHIC EXAMPLE

NYCDOT STANDARD BIKE RACK

RBA
STUDIO

TRUST
for
PUBLIC
LAND

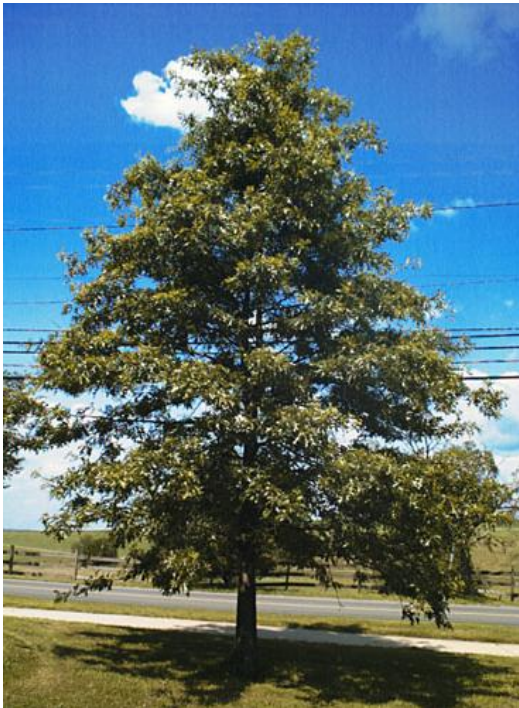
City of New York
Parks & Recreation
Olmsted Center
Flushing Meadows Corona Park
Flushing, New York 11368

CREATING PUBLIC ACCESS AT THE NORTH SHORE MARINA
STATEN ISLAND, NEW YORK

SITE DETAILS - FURNITURE

OCTOBER 18, 2011

SLIDE 7



Pin Oak
Quercus Palustris



White Ash
Fraxinus Americana 'Autumn Purple'



Flowering Dogwood
Cornus Florida 'Cherokee Princess'



Moraim Sweetgum
Liquidambar Styraciflua 'Moraim'



American Linden
Tilia Americana



Gray Birch
Betula Populifolia



Star Magnolia
Magnolia Stellata



Mapleleafed Viburnum
Viburnum Acerfolium



Arrowwood
Viburnum Dentatum



Fragrant Sumac
Rhus Aromatica



Creeping Juniper
Juniperus Communis



Red Chokeberry
Aronia Arbutifolia



Sweet Pepperbush
Clethra Alnifolia



Bush Cinquefoil
Potentilla Fruiticosa



Canadian Yew
Taxus Canadensis