

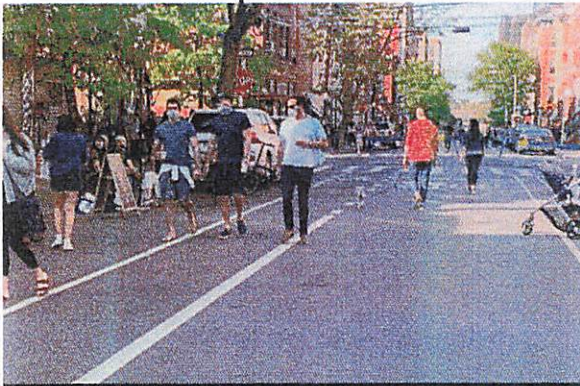


46TH AVE PLAZA PROPOSAL

Public Space Unit . June 2021



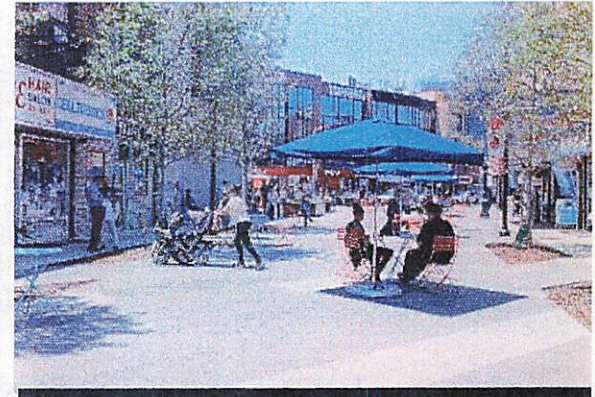
DOT Public Space



Open Streets



StreetSeats



Plaza Program



Open Restaurants



29-Day Concessions

2019 On-street Outreach

53 interactions

2 deployments on October 23 & 30, 2019



—— Top Safety Concerns Reported ——

1. Vehicles failing to yield to pedestrians
2. Heavy vehicular traffic
3. Speeding vehicles
3. Vehicles illegally parked



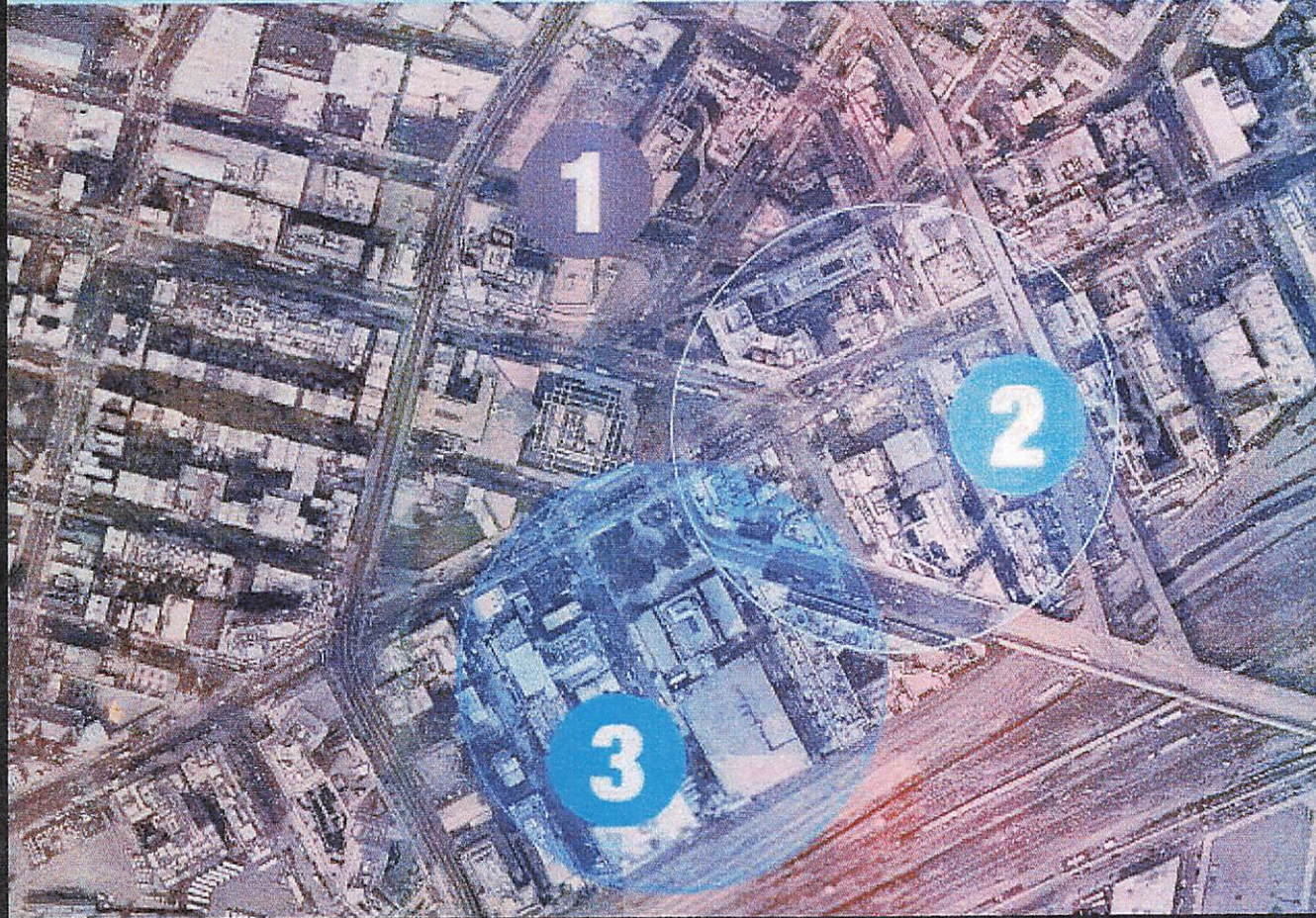
—— Top Improvements Requested ——

1. More pedestrian circulation space
2. More seating
2. More bike amenities



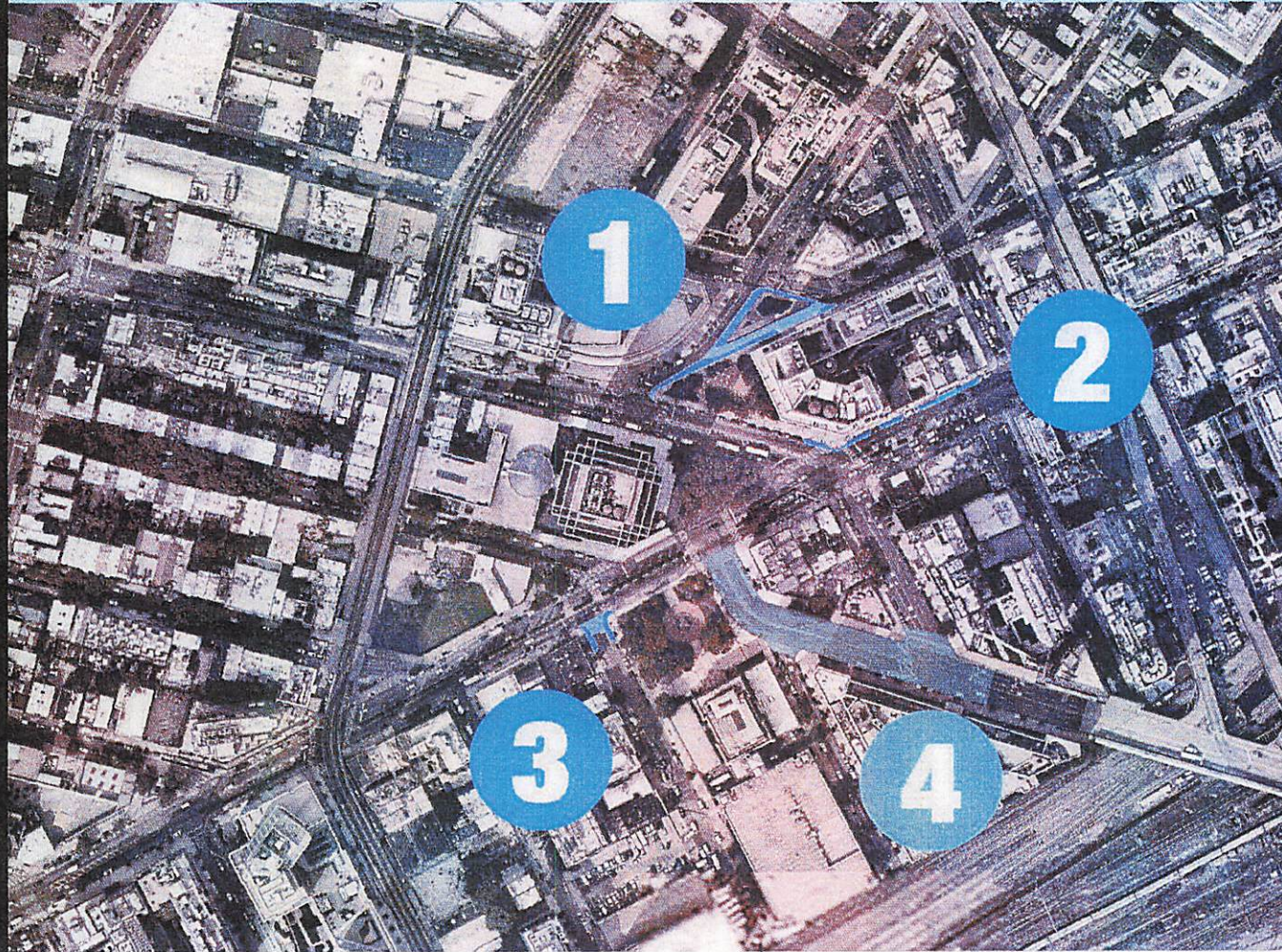
Virtual Workshops: December 15 & 17, 2020

Workshop Summary



Virtual Workshops: February 3 & 4, 2021

Workshop Summary



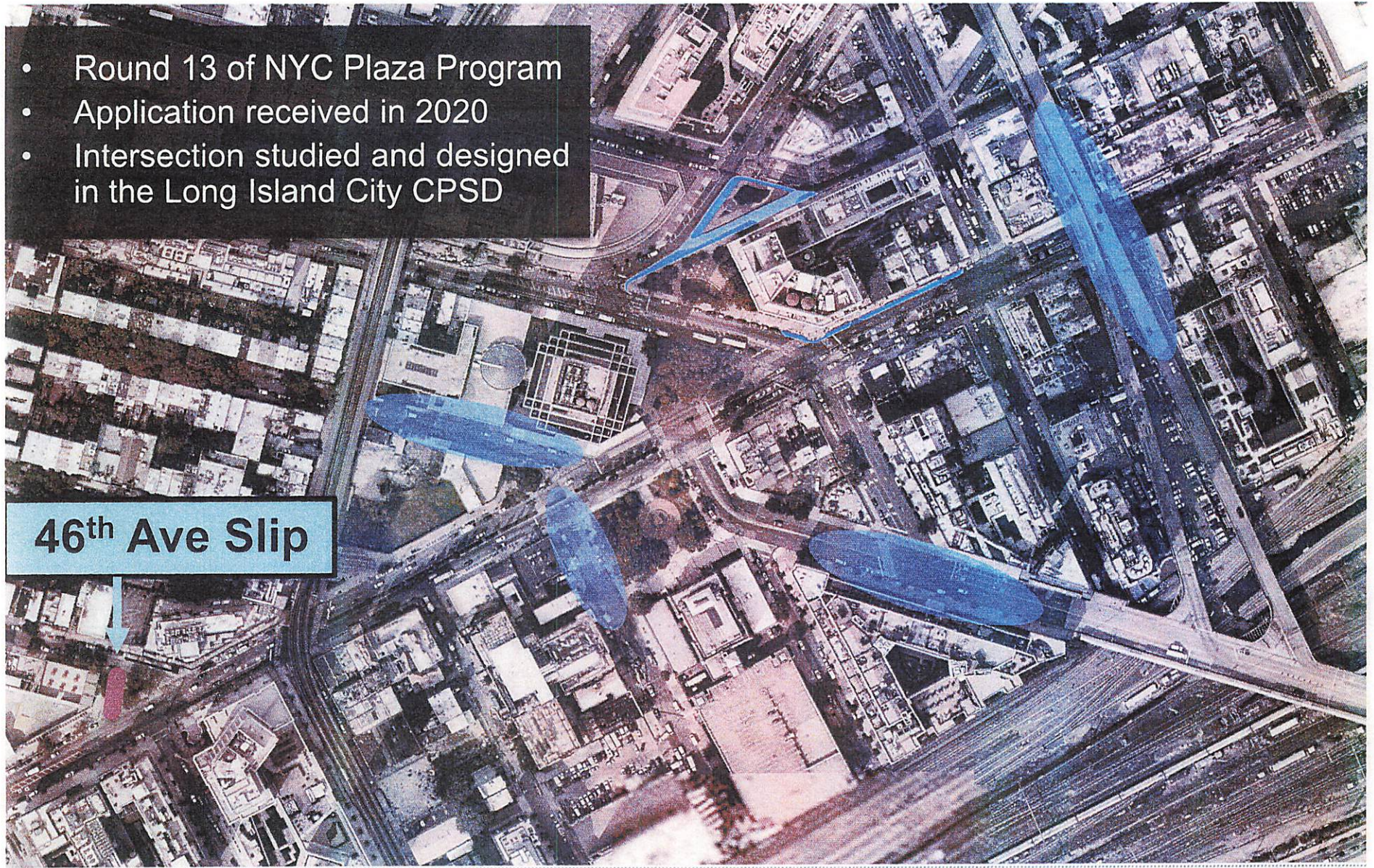
March 2021: CB2 TC Presentation



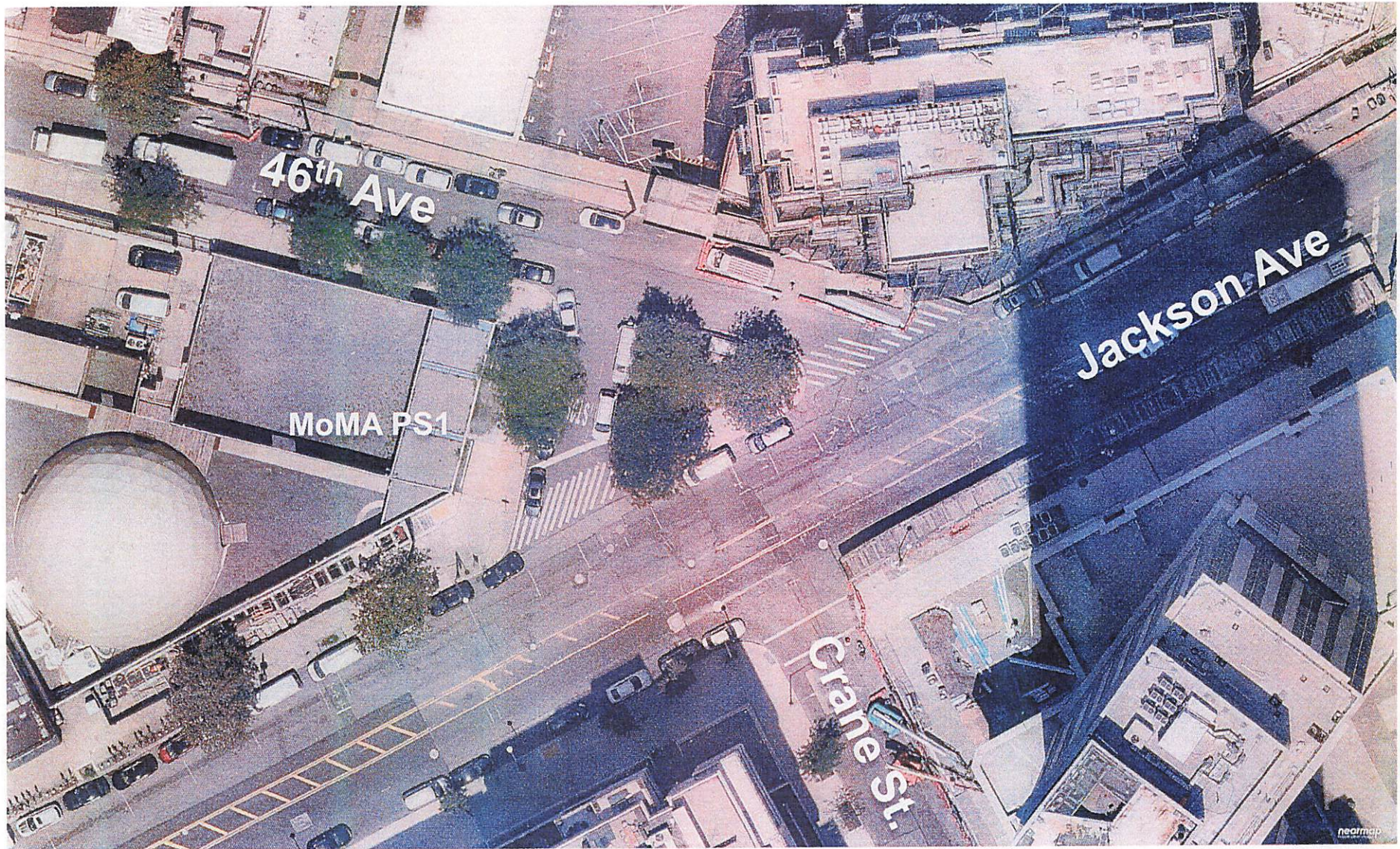
46th Ave Plaza Application

- Round 13 of NYC Plaza Program
- Application received in 2020
- Intersection studied and designed in the Long Island City CPSP

46th Ave Slip



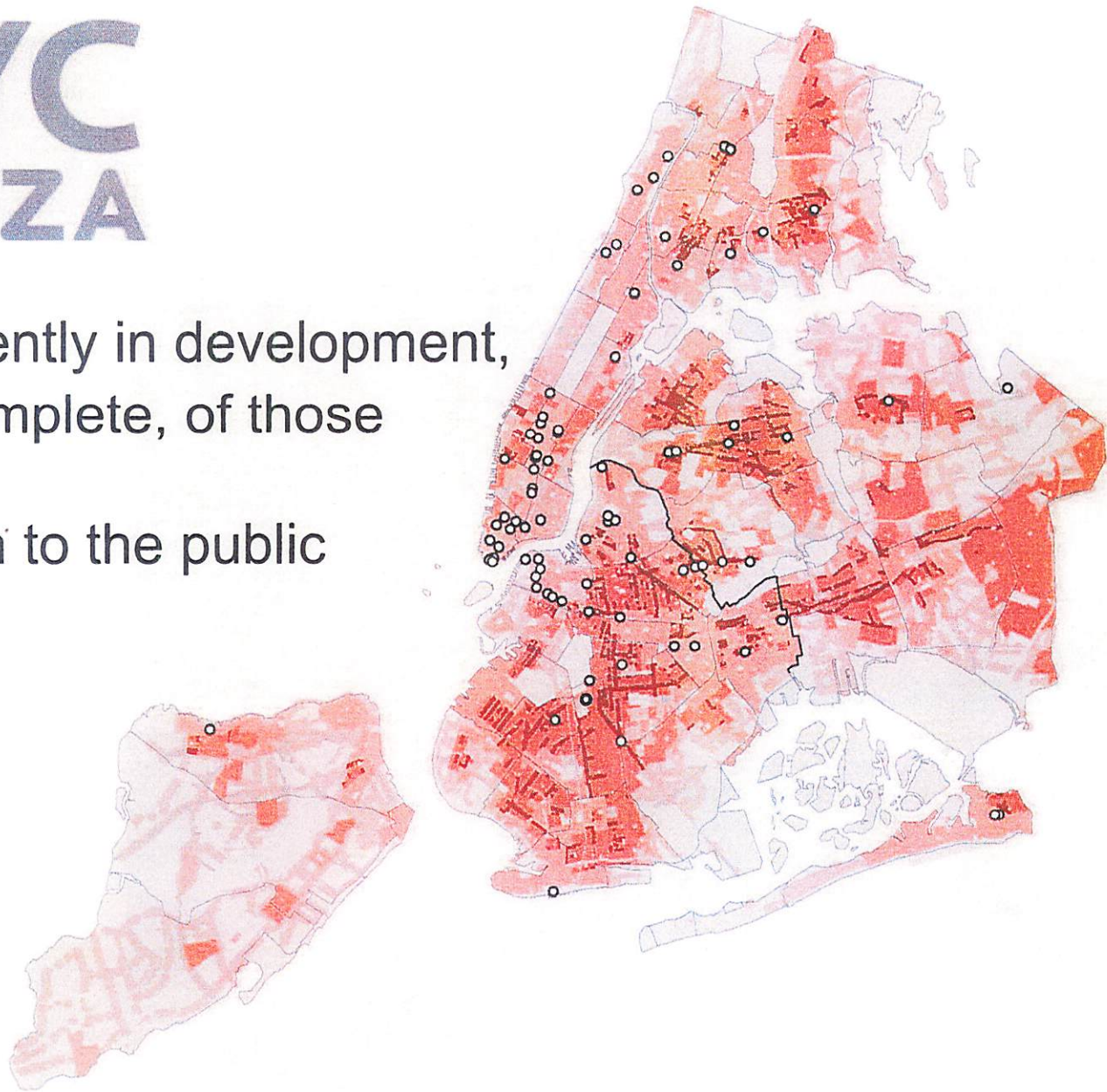
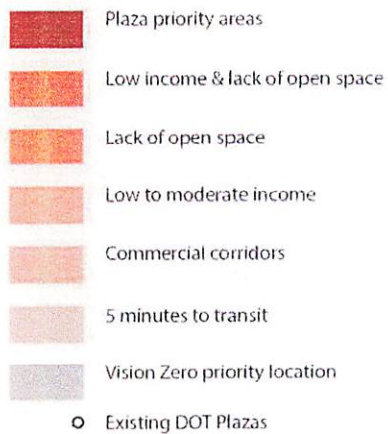
46th Ave Plaza Application





82 Plazas currently in development, construction, or complete, of those

66 Plazas open to the public



PLAZA PROGRAM

To create high quality public space in underutilized roadway, particularly in low to moderate income neighborhoods that lack open space. Plazas aim to enhance:

- Local Economic Vitality
- Pedestrian Mobility and Access to Public Transit
- Safety For All Street Users
- Added Value:
 - Bolster Civic Engagement
 - Enhance Public Safety



Bogardus Plaza, Manhattan



Diversity Plaza // Nepalese Earthquake Vigil



Flatiron Plaza // Typical Day

PLAZA PROGRAM

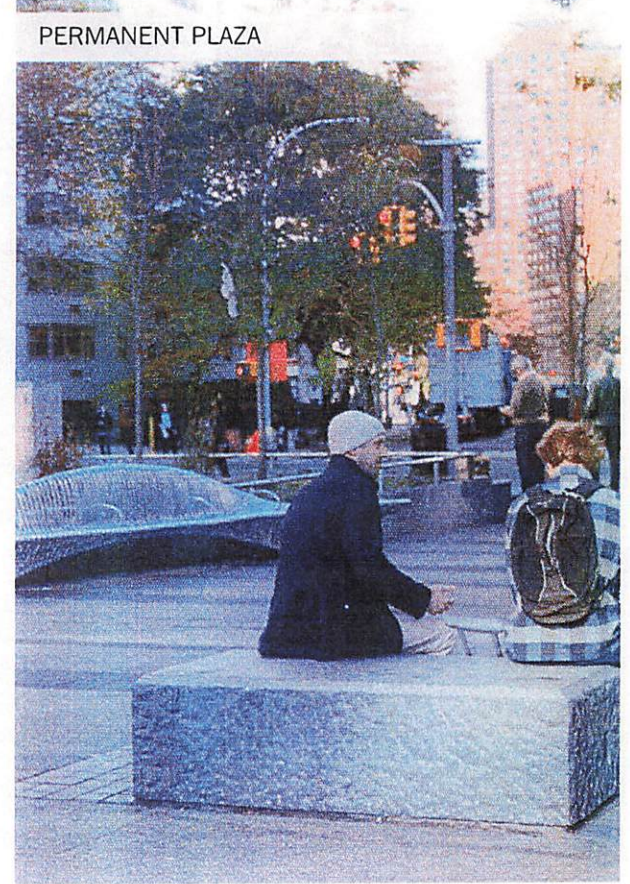
E-DAY PLAZA



INTERIM PLAZA

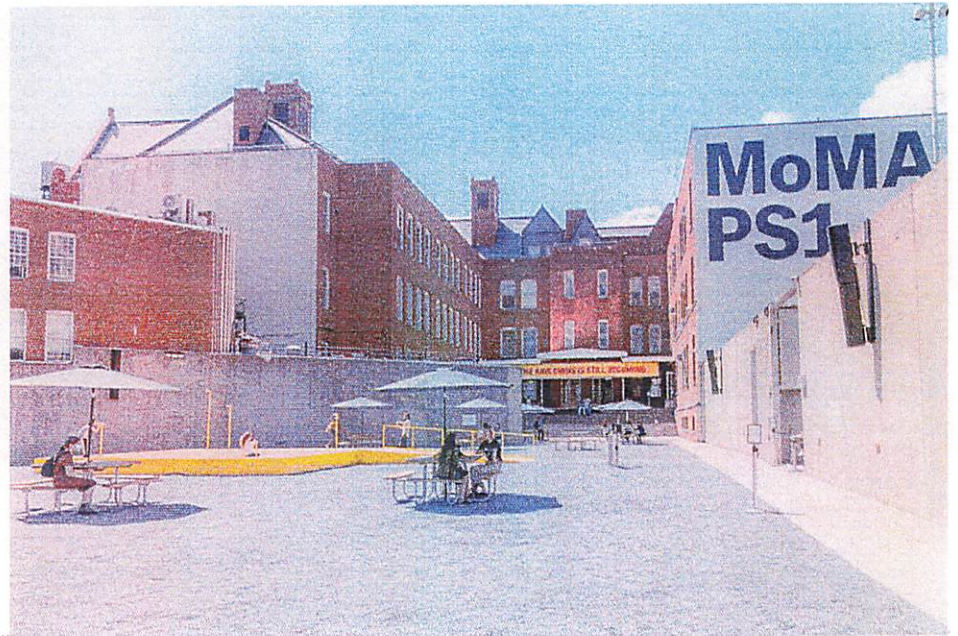
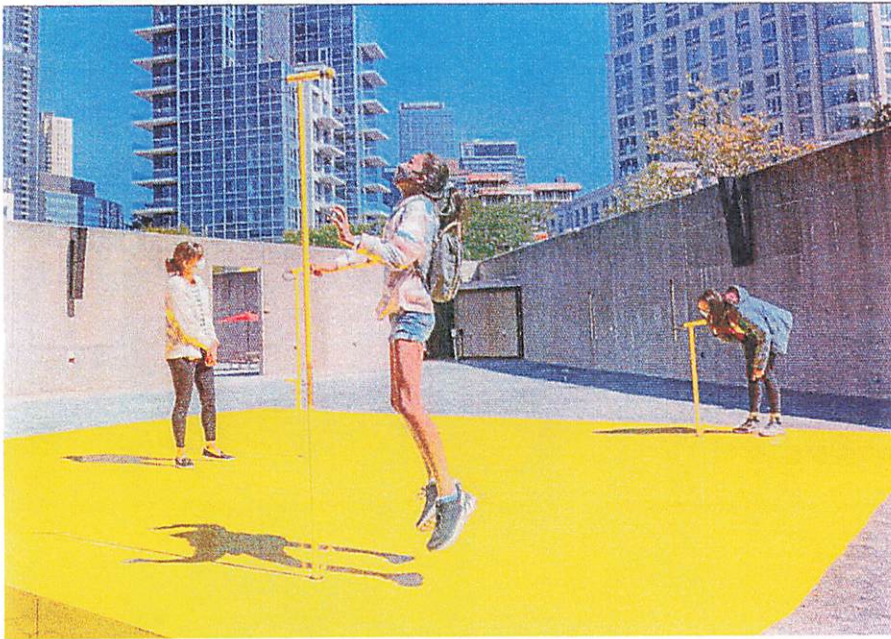


PERMANENT PLAZA



Plaza Partner: MoMA PS1

- MoMA PS1 champions art and artists at the intersection of the social, cultural, and political issues of their time. Providing audiences with the agency to ask questions, access to knowledge, and a forum for public debate, PS1 has offered insight into artists' diverse worldviews for more than 40 years. Founded in 1976 by Alanna Heiss, the institution was a defining force in the alternative space movement in New York City, transforming a nineteenth century public schoolhouse in Long Island City into a site for artistic experimentation and creative expression. PS1 has been a member of New York City's Cultural Institutions Group (CIG) since 1982, and affiliated with The Museum of Modern Art since 2000.

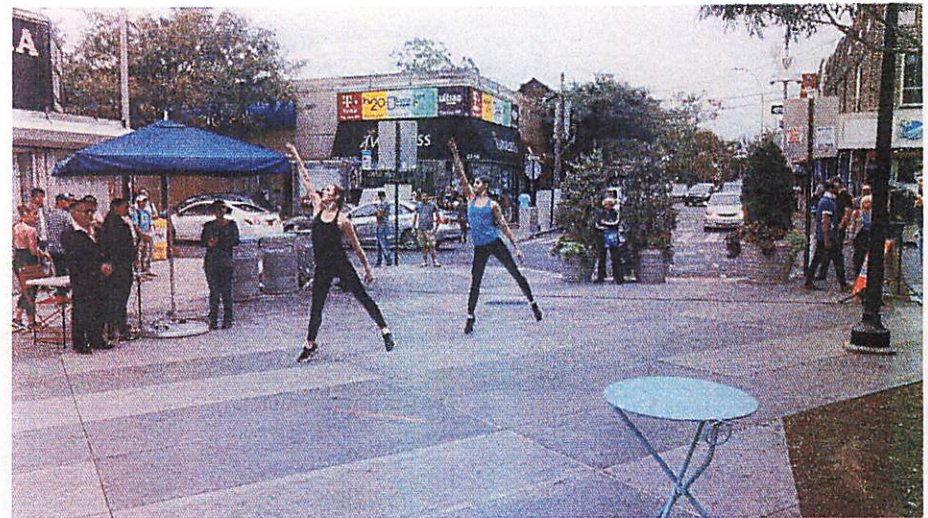


PROGRAMMING

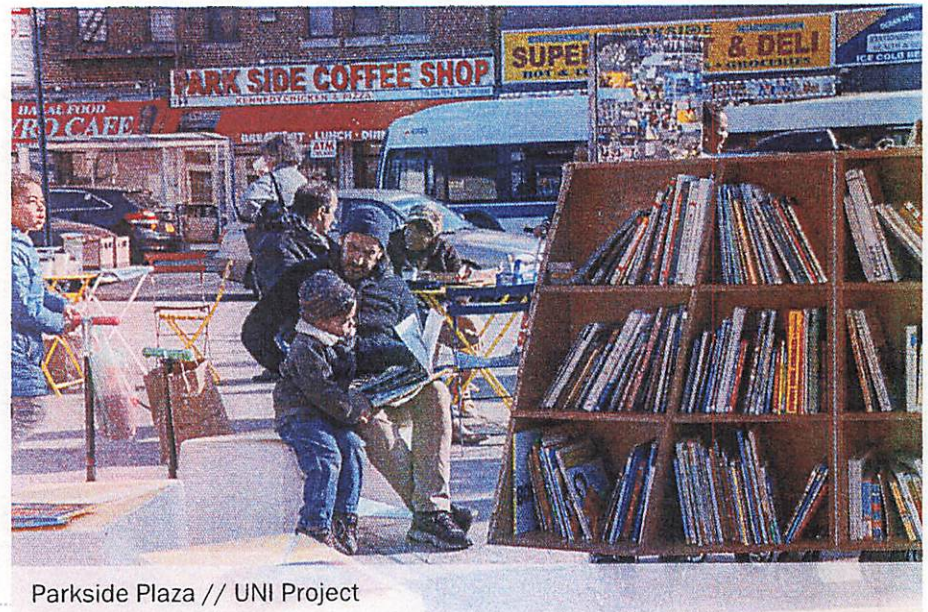
Partners are encouraged to program their plazas, particularly with community organizations and events.

Site will now be listed in SAPO (Street Activity Permit Office) as a plaza and not a street.

Any organization can apply for a SAPO permit to program the new plaza.



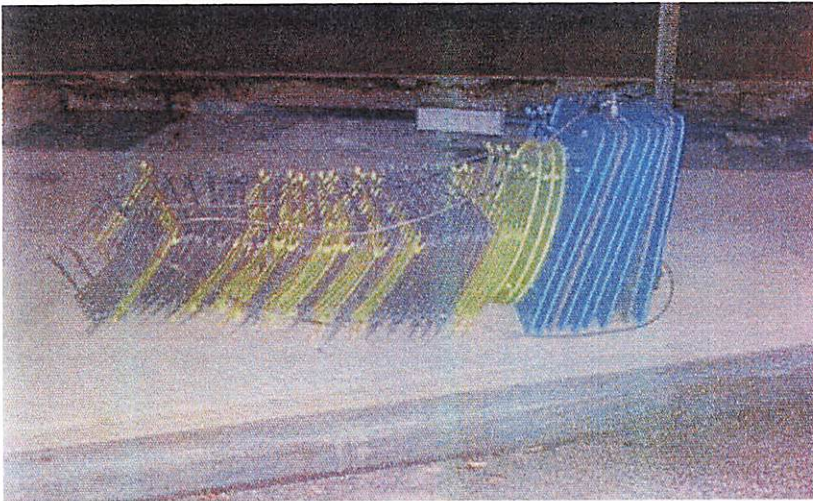
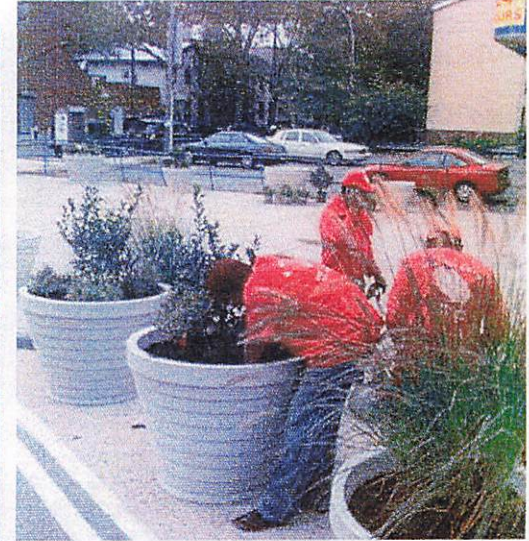
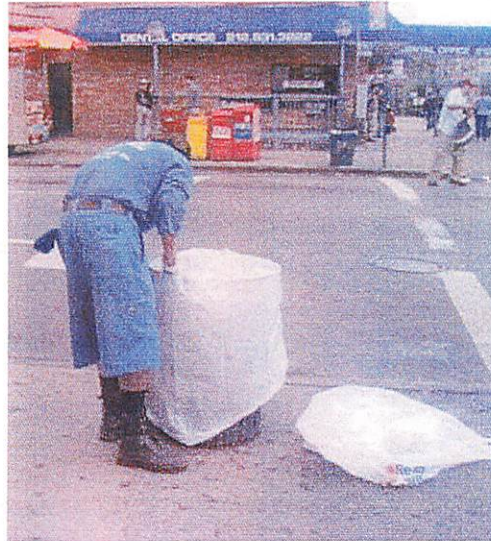
Diversity Plaza // Dance Troupe



Parkside Plaza // UNI Project

MAINTENANCE RESPONSIBILITIES

The maintenance partner would be responsible for basic maintenance tasks including litter removal, snow clearance, furniture maintenance, and horticultural care.



PLAZA RULES + SIGNAGE

- DOT created plaza rules, many of which are based on Parks code of conduct rules which allow the plaza to be managed as a public space.
- Rules signage is posted in all plazas.



PLAZA TOOLKIT

- Planters
- Granite Blocks
- Umbrellas
- Movable Furniture
- Flexible Delineators
- Epoxy Gravel
- The Smoke

COMMUNITY ENGAGEMENT PLAN

- **Pop-up Plaza:** Early July – Fall 2021
 - Conduct observational assessments and public surveys
 - Public programming throughout by MoMA PS1
- **Online Survey:** Early July – August 2021
 - Disseminate via social media, email blasts, and on-site flyers with QR codes
- **In person, outdoor workshop:** July 8, 2021, 3 PM – 6 PM
 - NYCDOT and MoMA PS1 will set up a table outside for 4 hours with informational material and maps to gather feedback from the public
 - Engagement material will include a mapping and drawing exercise
- **Virtual Workshop:** July 14, 2021, 6 PM – 8 PM
 - NYCDOT and MoMA PS1 will co-host a virtual public workshop to gather feedback on design concepts
 - Presentation followed by a town hall- style open discussion

NEXT STEPS

- Temporary street closure and installation of pop-up plaza from early July through Fall 2021
- MoMA PS1 will host summer public programming in the pop-up plaza.
- NYC DOT and MoMA PS1 will conduct the community outreach plan to gather input on design treatment, safety enhancements, and programming ideas.
- Design development informed by community input
- CB2 TC presentation in September
- Plaza installation estimated in Fall 2021