



Northern Blvd

51 St to Broadway

School Safety Improvements

Presentation for Community Board 1 | April 2, 2025



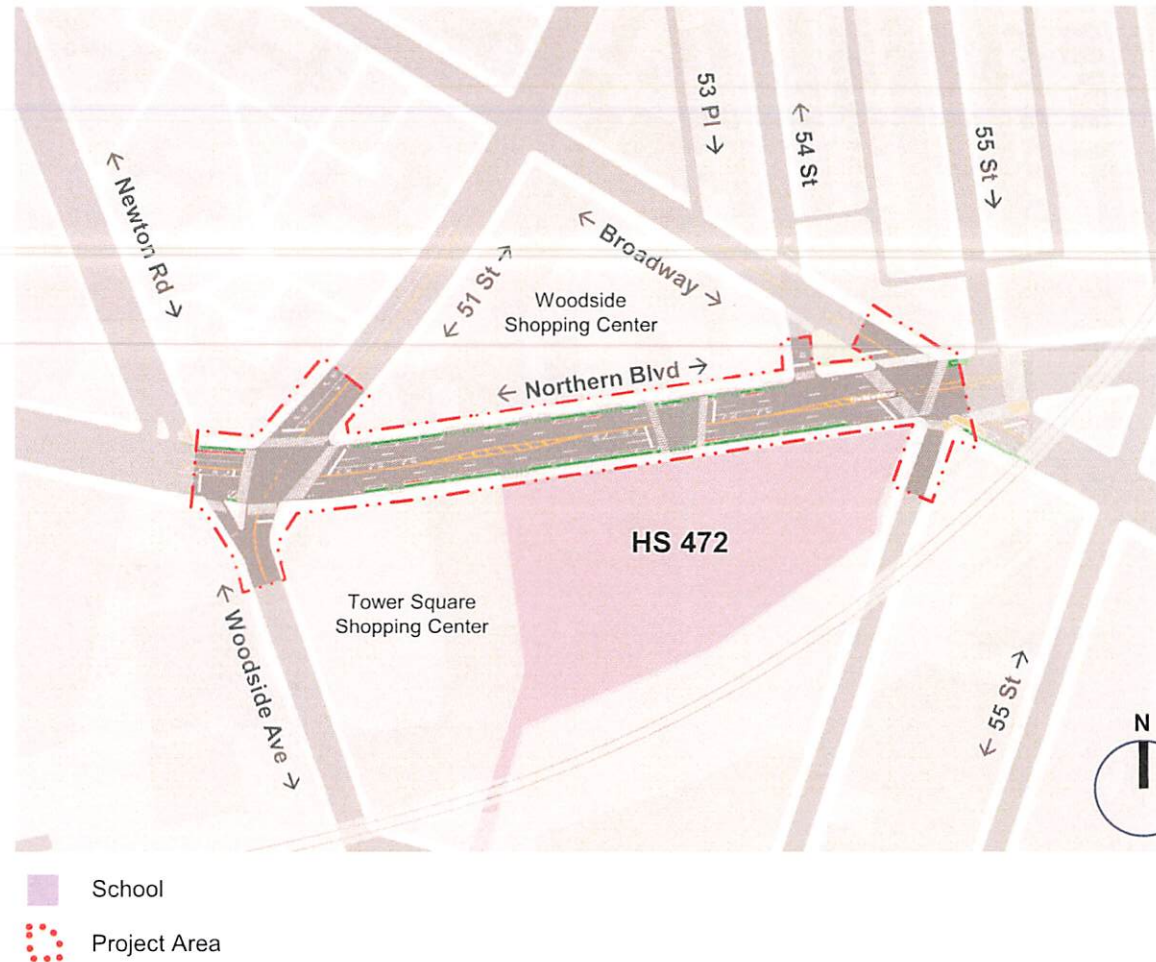


Background

Background

Project Area

- HS 472 (3,079 students) opening in 2025
- Designated Through Truck Route
- Five bus routes: Q63, Q66, QM2, QM20, and QM32



Background

Past Outreach in the Area

- **2018** – DOT held three public workshops to hear community concerns around safety and mobility. Community priorities included:
 - Protected bike lanes
 - Improved bus service
 - **Pedestrian safety upgrades like islands, medians, and shorter crossings**
- **2020** – DOT and State Senator Ramos gathered feedback directly from businesses along Northern Blvd.
- **2022** – Elected officials called for additional transit improvements, including dedicated bus lanes and faster, more reliable bus service.



DOT holds community workshops, October 2018



Elected officials, community members campaign for transit improvements, May 2022

Background

Recent Work

Previous Northern Blvd Street Improvement Projects

- **Newtown Rd to Broadway (2019)**
 - Pedestrian island, curb extensions, and expanded triangle
- **41st Ave to Broadway (2021)**
 - Protected bike lanes
- **Broadway to 114 St (2023)**
 - Bus lanes

Adjacent Current Project

- **51 St, Northern Blvd to 31 Ave (2025)**
 - Protected bike lanes, bus boarding island, and pedestrian islands



Northern Blvd facing northeast

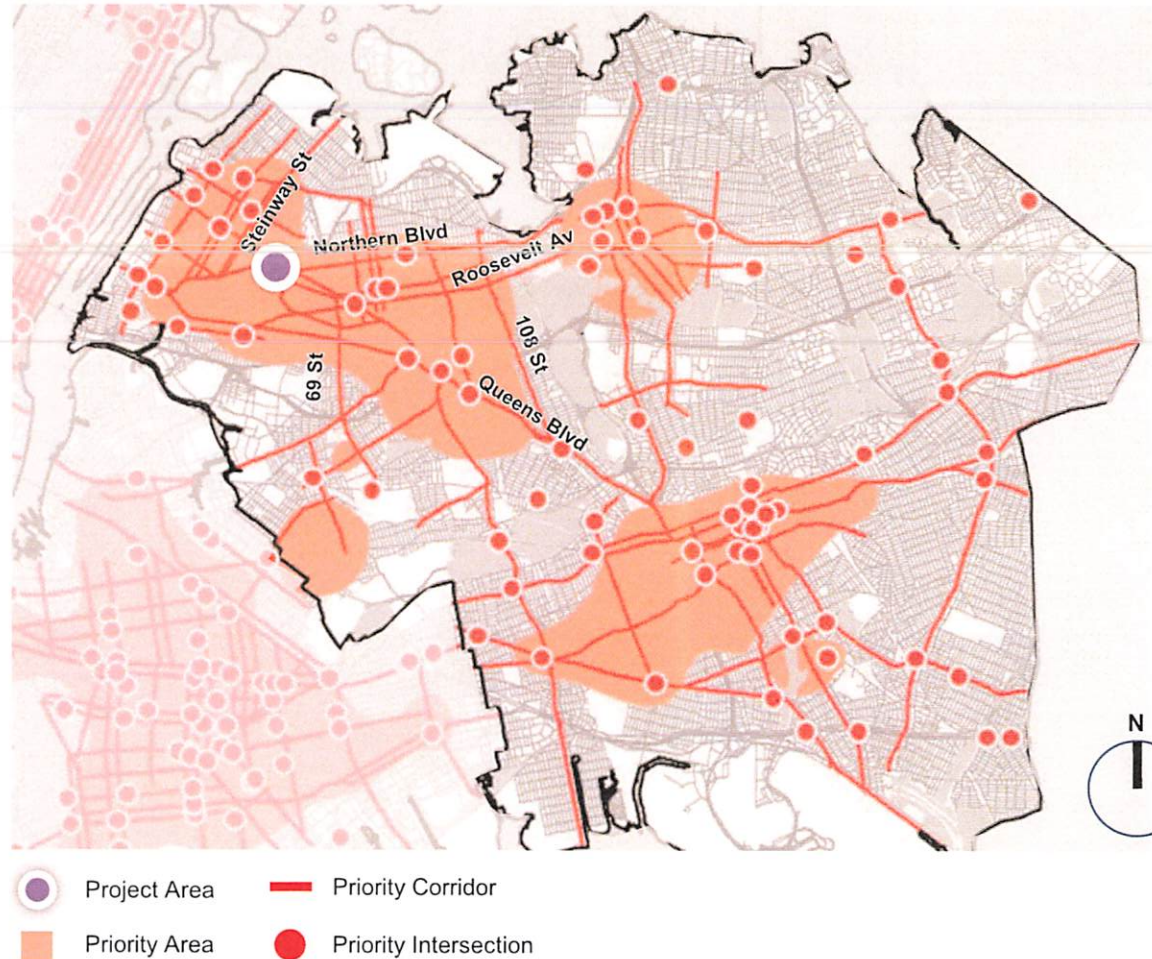
Background

Vision Zero

- Multi-agency effort to reduce traffic fatalities in NYC
- Borough Action Plans released in 2023
- Priority Intersections, Corridors, and Areas identified for each borough

Northern Blvd, 51 St to Broadway

- Project area is in a Vision Zero **Priority Area**
- **Northern Blvd** is a Vision Zero **Priority Corridor**



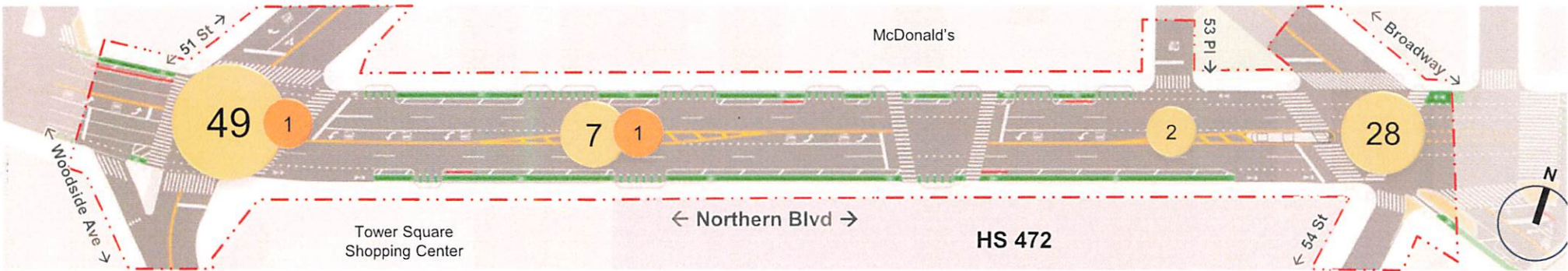
Background

Collision and Injury Data

- **86** total reported injuries
- **2** serious injuries
- **34%** of injuries involve pedestrians and bicyclists

Injury Summary — 2019-2023 (5 Years)

Mode	Total Injuries	Severe Injuries	Fatalities	KSI
Pedestrian	11	1	0	1
Bicyclist	18	0	0	0
MVO	53	0	0	0
Other Motorized	4	1	0	1
Total	86	2	0	2



Source: NYPD

Legend: School (purple square), Project Area (red dashed line), Total Injuries (yellow circle), Severe Injuries (orange circle), Fatalities (red circle)

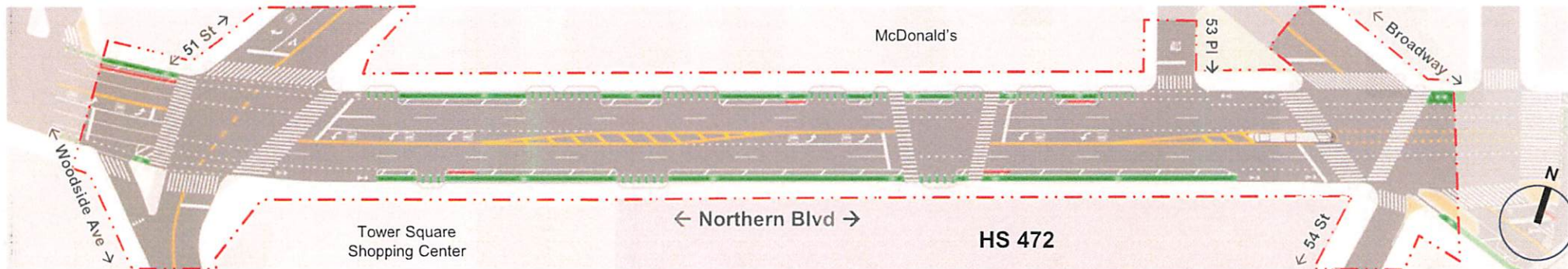
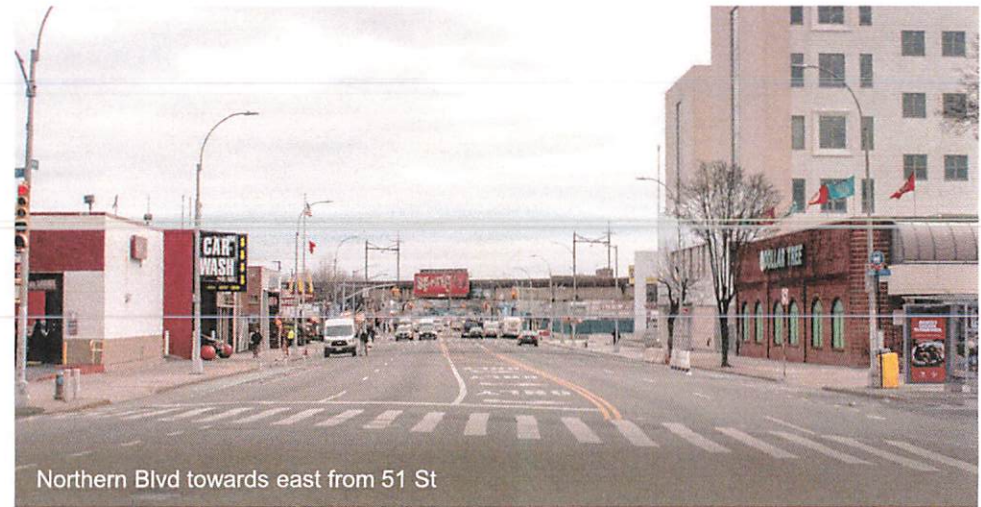
Existing Conditions

2

Background

Existing Conditions

- Two-way, 70-foot-wide street with two travel lanes and bike lanes in both directions
- Numerous driveways create potential conflict points
- Painted flush median—designed for left-turn bays—encourages **higher speeds**



Source: NYPD

■ School ■ Project Area ● Total Injuries ● Severe Injuries ● Fatalities

Existing Conditions – Commercial Driveways

-
- Northern Blvd in front of Tower Square Shopping Center



Existing Conditions – Commercial Driveways

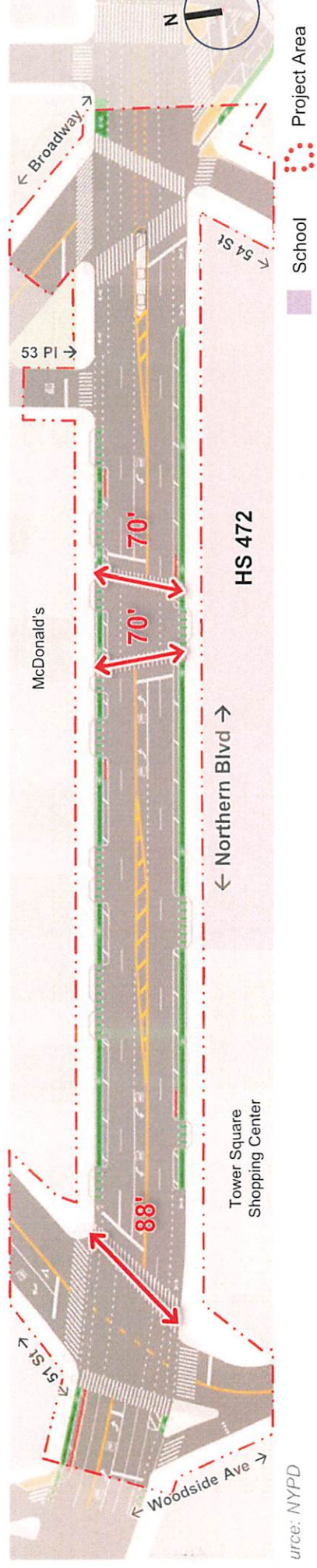
-
- Northern Blvd in front of Tower Square Shopping Center



Background

Existing Conditions – Long Crossings

- 70 to 88-foot-long crossings
- No pedestrian safety islands



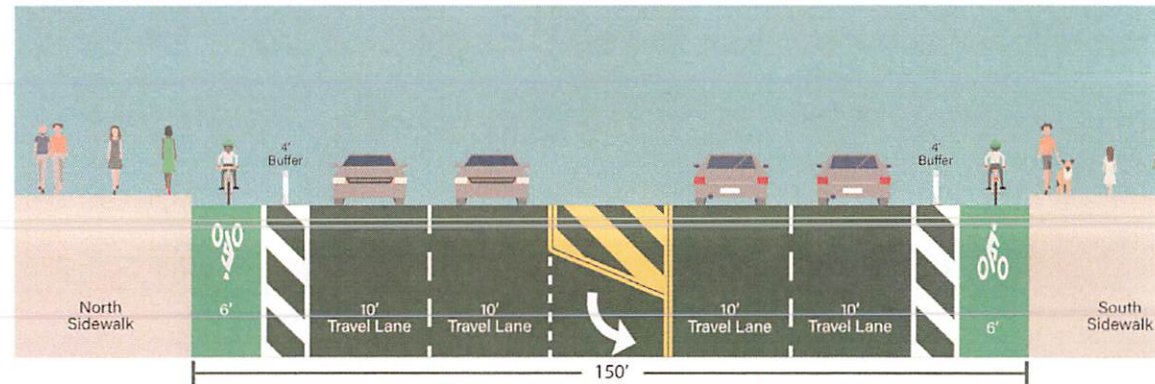
Planned Improvements

3

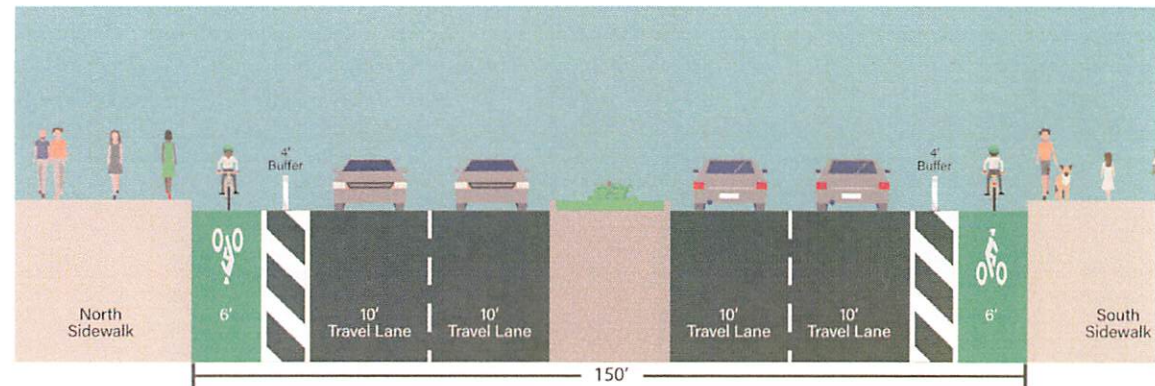
Northern Blvd, 51 St to Broadway

Planned Improvements

- Replace flush median and left-turn bays with an extended concrete median and pedestrian refuge island



Existing

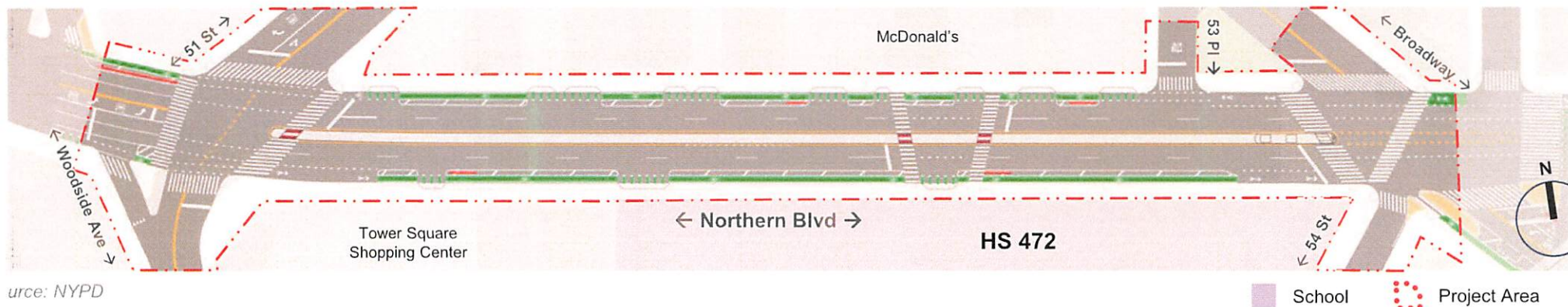


Proposed

Background

Planned Improvements

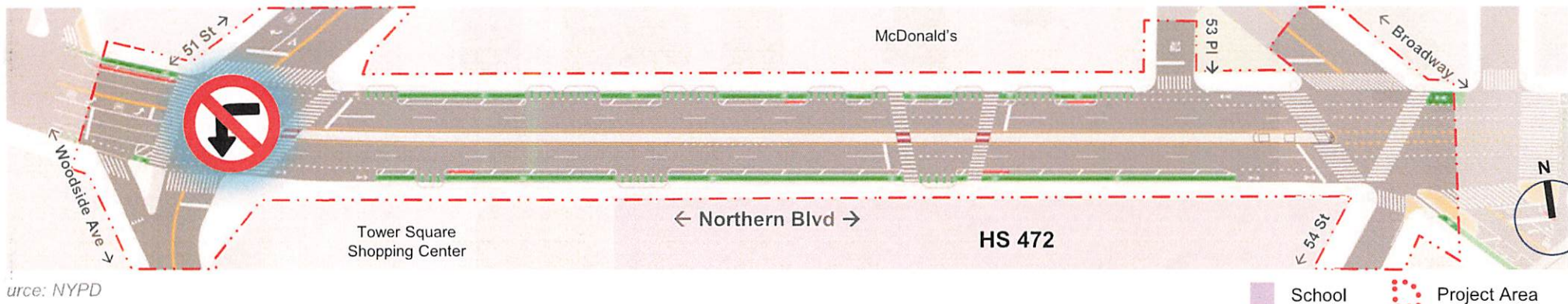
- Pedestrian refuge and shorten crossing
- Prevent mid-block left and U-turns
- Reduce pedestrian and bike conflicts with moving vehicles
- Calms traffic



Background

Planned Improvements

- Ban low-volume westbound left turn from Northern Blvd onto Woodside Ave, to make room for concrete median/pedestrian refuge island
 - Reduce conflict with crossing pedestrians and bicyclists at south crosswalk



Northern Blvd, 51 St to Broadway

Traffic Reroutes to Woodside Ave

Preferred Reroute

From Northern Blvd before Broadway

- Head west on Northern Blvd
- Turn right onto Broadway
- Turn left onto 51 St
- Head south onto Woodside Ave

Alternative Reroute

From Northern Blvd after Broadway

- Head west on Northern Blvd
- Turn right onto Newtown Rd
- Turn right onto 49 St; then Broadway
- Turn right onto 51 St
- Head south onto Woodside Ave



Northern Blvd, 51 St to Broadway

Traffic Reroutes to Driveways

Preferred Reroute

From Northern Blvd before 51 St

- Head east on Northern Blvd
- Turn left onto 51 St
- Turn right onto Broadway
- Turn right onto Woodside Shopping Center

Alternative Reroute

From Northern Blvd after 51 St

- Head east on Northern Blvd
- Turn right onto Broadway
- Turn left onto 55 St
- Turn left onto Northern Blvd



Northern Blvd, 51 St to Broadway

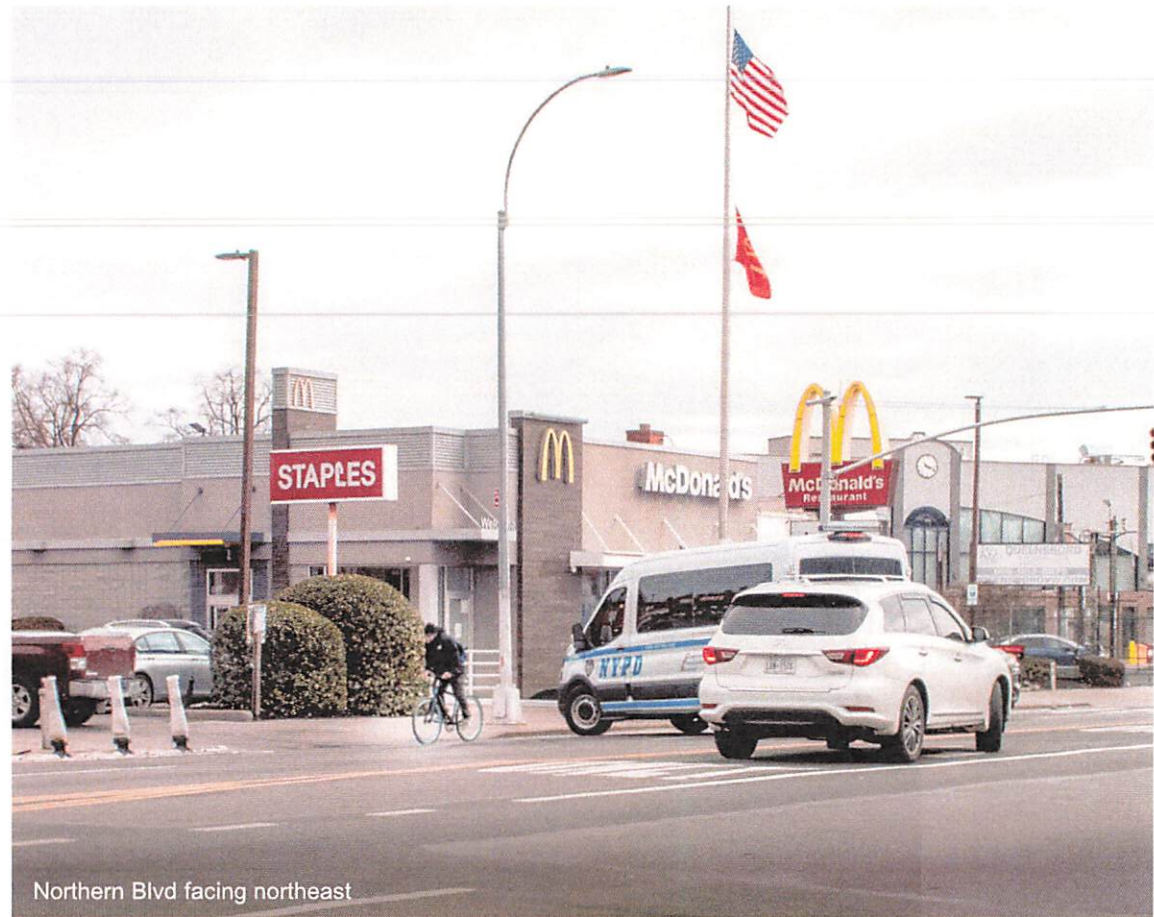
Next Steps

Spring 2025

- Community Outreach

Summer 2025

- Project Implementation



Northern Blvd facing northeast

Thank You!

Questions?

NYC DOT Queens

Borough Commissioner's Office

212.839.2510



NYCDOT



nyc_dot



nyc_dot



NYCDOT