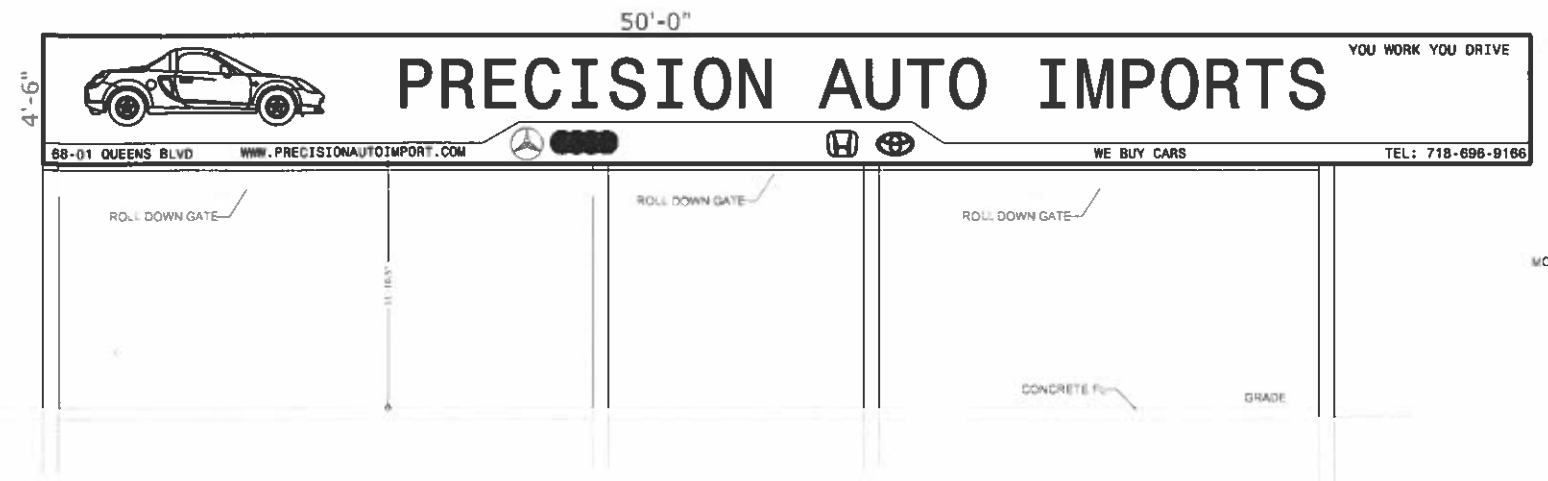
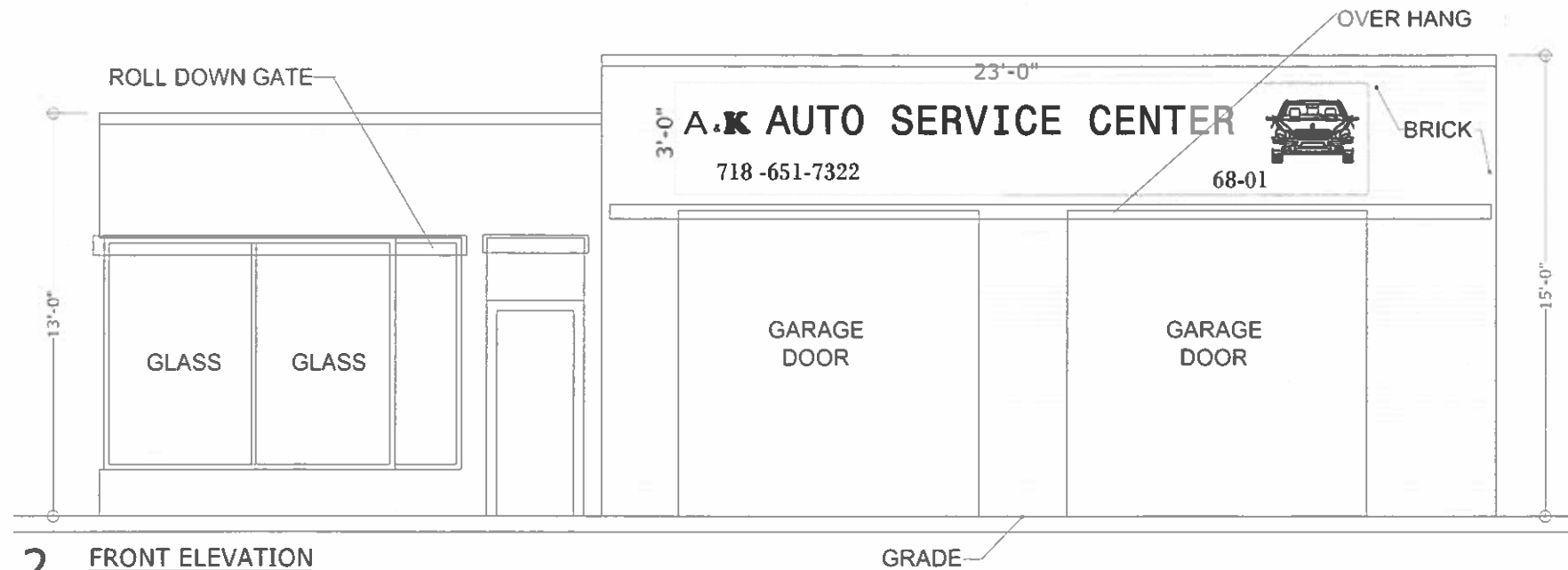


1 TYPICAL SECTION
3/16"=1'-0"

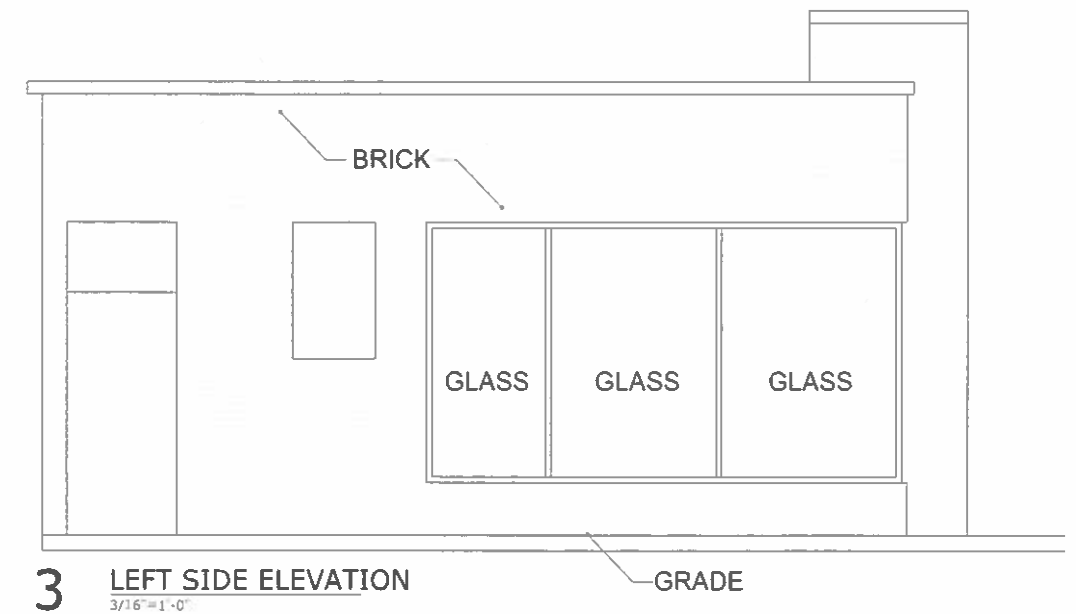


4 SIGN ELEVATION
NTS

TOTAL SIGNAGE
 50'-0" X 4'-6"= 225 SQF
 23'-0" X 3'-0"= 69 SQF
TOTAL PROPOSED: 294 SQF
TOTAL ALLOWED: 300 SQF(ZR-32-642)



2 FRONT ELEVATION
3/16"=1'-0"



3 LEFT SIDE ELEVATION
3/16"=1'-0"

ELEVATION AND SECTION

EXISTING AND PROPOSED CONDITIONS
B.S.A. # 271-90-BZ

DATE: 6/10/22
SCALE: AS NOTED

GREGORY V. PEROTTO, P.E.

42-18 235th Street
Douglaston, NY 11363
Phone: 718-746-1700 Fax: 718-746-1840

SEAL:



DRAWING NUMBER:

A-2

68-01 QUEENS BOULEVARD
QUEENS, NY 11377

