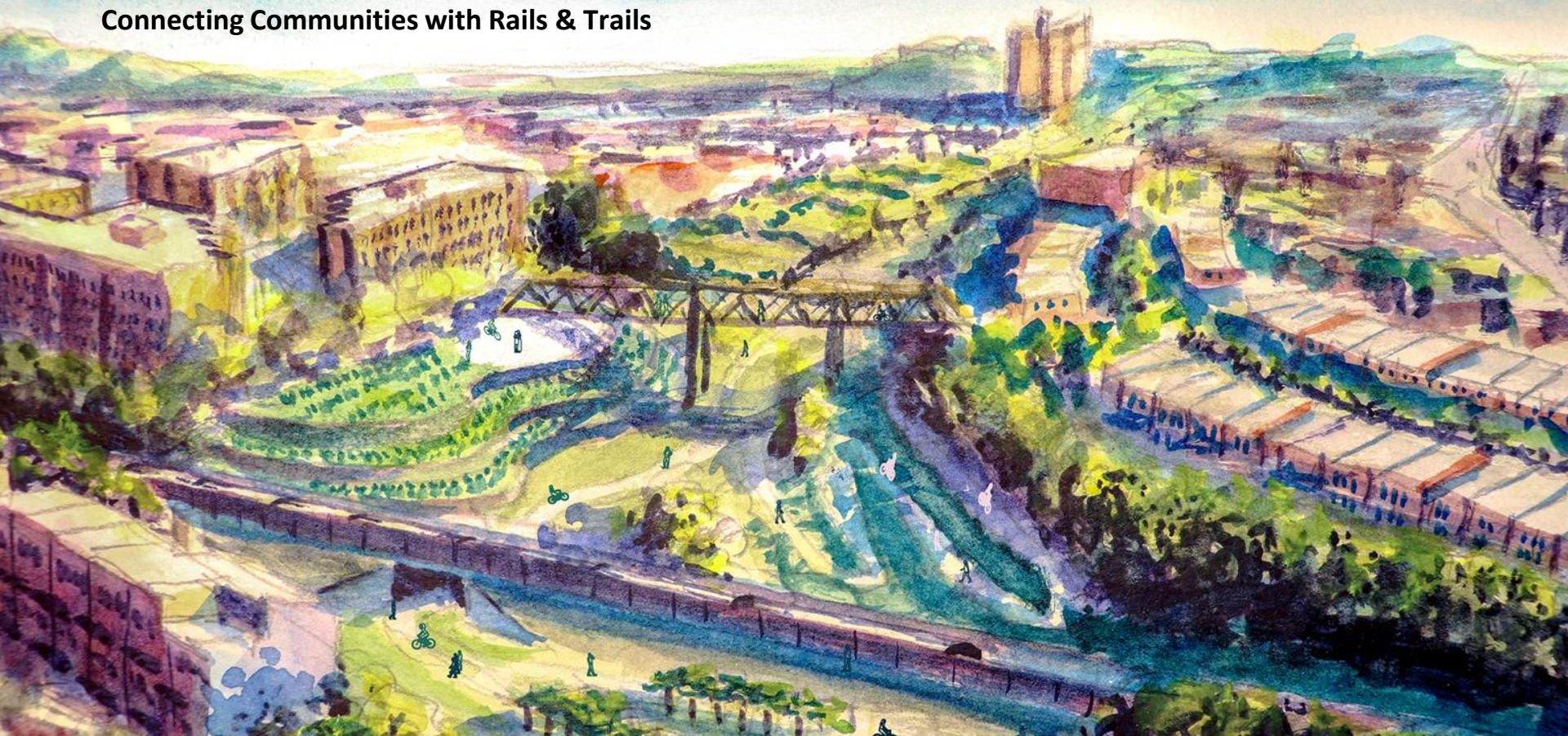


# QueensLink

Connecting Communities with Rails & Trails



# Who We Are

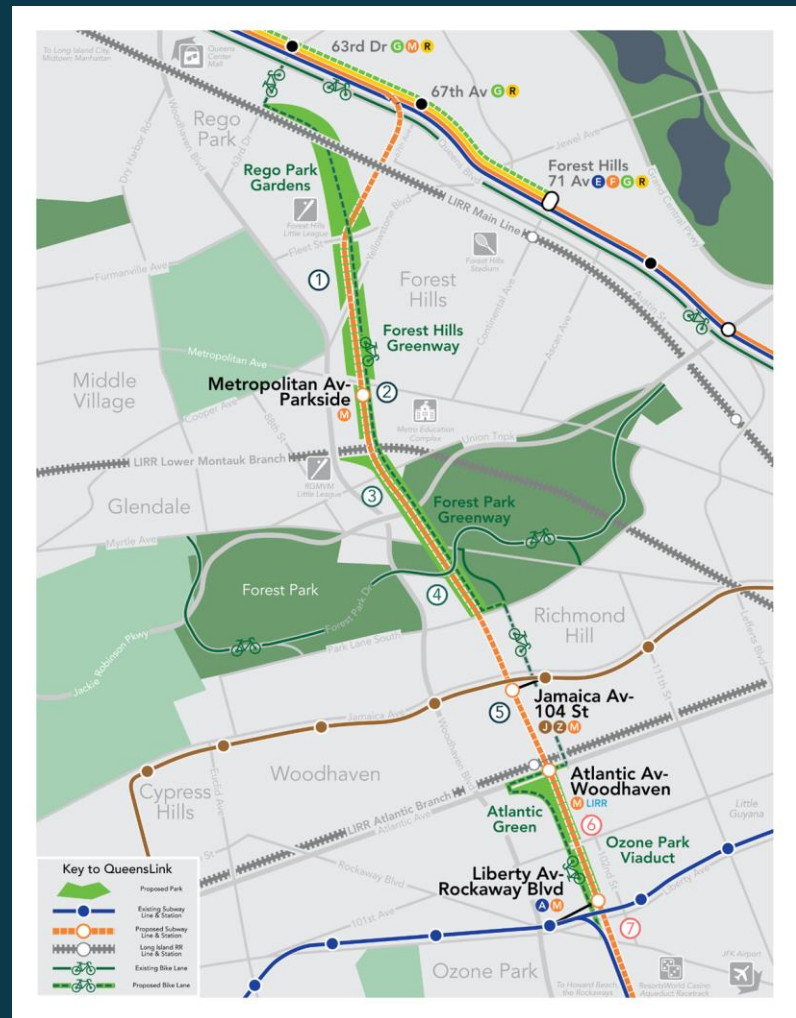
---

- ENTIRELY volunteer-run non-profit
- Funding comes from city discretionary funds, grants, and personal donations.
- Our plans were developed based on extensive community and political outreach.
- We want your input for how to make QueensLink better!



# What is QueensLink?

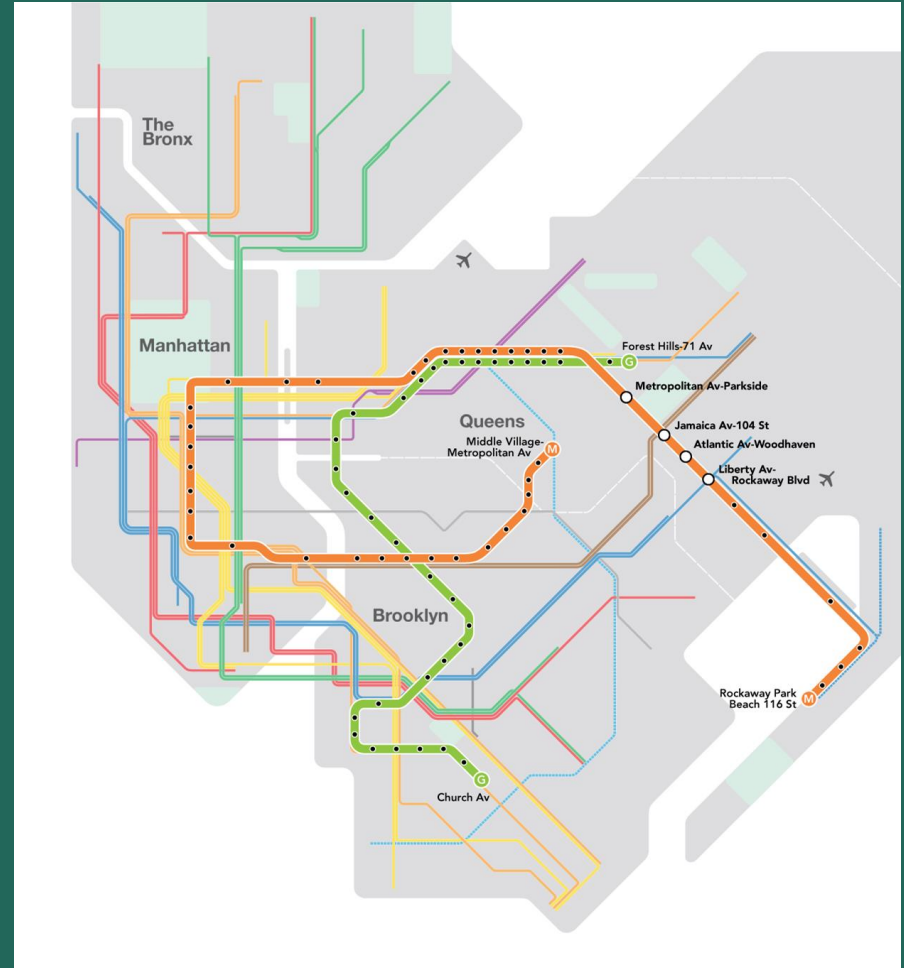
- A vital and essential piece of a more affordable New York City.
- QueensLink is *both Rails AND Trails*:
  - Queen's first north-south rail transit line
  - Extends the M train from Rego Park to the Rockaways & the G train back to Forest Hills
  - Creates up to 33 acres of new parks along the ROW
- Based on 2019 MTA Feasibility study, found rail reactivation WAS feasible, as well as space for new parks.



# More service, Less crowding

QueensLink proposes extending the M train from Rego Park to Rockaway Park, and the G from Court Sq to Forest Hills.

- A 2025 NYU ridership study shows that QueensLink would see over 75,000 riders per day, almost double the MTA projection.
- Adds 50% more service on Queens Blvd Line, and up to 165% more service to the Rockaways.
- Reduces crowding on the 7 train.
- Reduces crowding on Q52/53 buses
- 95,000 fewer vehicle miles traveled daily



# It's the Economy, Stupid!

---

QueensLink saves +950,000 minutes each year,  
equating to \$4.9B in time savings

- Creates over \$9 billion in total economic output for the NYC economy.
- \$1 billion in health and quality of life benefits
- \$780 million in congestion, safety, and environmental benefits

Together, these effects contribute to:

- Stronger local and regional economic growth
- Increased tax revenues for governments
- Long-term productivity gains driven by improved connectivity and access to jobs

---

QueensLink “could deliver up to  
\$2.20 of benefit to wider society  
for every \$1 of public  
investment,”

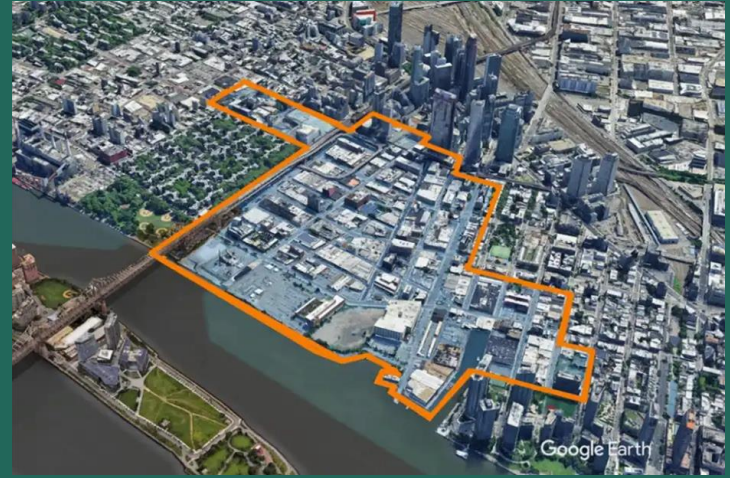
---

- Steer Group QueensLink Report

# Growth In Queens

---

- ONE LIC will bring thousands of additional homes to CB2, straining existing infrastructure.
- City of Yes: new housing allowed near existing transit stations will yield 10s of thousands of new units. Poor subway service will force residents to drive.
- Redevelopment along Queens Blvd will bring 3,190 new homes along the congested Queens Blvd subway line.
- QueensLink would allow the G train to return to Queens Blvd FULL TIME. This is especially important in light of the recent push to extend the G on weekends.



# Lawmakers and Orgs that support advancing the QueensLink Proposal!



**Gregory Meeks**  
United States  
Congress, 5th  
District



**Jamaane Williams**  
Public Advocate



**Brad Lander**  
New York City  
Comptroller



**James Sanders, Jr.**  
New York State  
Senate, District 10



**Michael Gianaris**  
New York State  
Senate, District 12



**Leroy Comrie**  
New York State  
Senate, District 14



Community Boathouse



Diverse Streets Initiative



Far Rockaway Averse Nonprofit Coalition



The Institute for Rational Urban Mobility



Joint Transit Association



Khalsa Community Patrol (Richmond Hill)



**Jessica Ramos**  
New York State  
Senate, District 13



**Brad Hoylman-Sigal**  
New York State  
Senate, District 47



**Joseph Addabbo, Jr.**  
New York State  
Senate, District 15



**Julia Salazar**  
New York State  
Senate, District 18



**Kristen Gonzalez**  
New York State  
Senate, District 59



**Stacey Pheffer Amato**  
New York State  
Assembly, District 23



Muslim Entrepreneur Association



New York Sikh Council



NYPIRG  
New York Public Interest Research Group



Open Plans



Our Neighbors Civic Association of Ozone Park, INC-ONCA



Permanent Citizens Advisory Committee to the MTA



**David Weprin**  
New York State  
Assembly, District 24



**Andrew Hevizi**  
New York State  
Assembly, District 28



**Khaleel Anderson**  
New York State  
Assembly, District 31



**Claire Valdez**  
New York State  
Assembly, District 37



**Jennifer Rajkumar**  
New York State  
Assembly, District 38



**Jessica Gonzalez-Rojas**  
New York State  
Assembly, District 34



Queens Climate Project



Queens Civic Congress



QEDC



Riders Alliance



RISE Rockaway



Rockaway Beach Civic Association



**Zohran K. Mamdani**  
New York State  
Assembly, District 36



**Ron Kim**  
New York State  
Assembly, District 40



**Donovan Richards**  
Queens Borough  
President



**Nantasha Williams**  
New York City  
Council, District 27



**Robert Holden**  
New York City  
Council, District 30



**Selvena Brooks-Powers**  
New York City  
Council, District 31



Surfrider NYC



Sunrise Movement NYC



Together We Serve



Tri-State Transportation Campaign



Waterfront Alliance



**Joann Ariola**  
New York City  
Council, District 32



Queens Community Board 6



Queens Community Board 10



Queens Community Board 14



Alliance of South Asian American Labor  
Briarwood Hill  
Chapter (ASAAL)



Cityline Ozone Park Civilian Patrol

Chapter (ASAAL)



Where can the  
**QueensLink** take you?

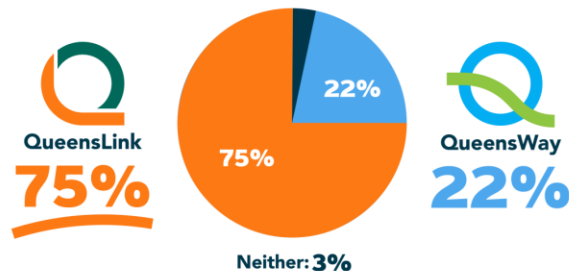
# But What About QueensWay?

- According to a recent poll conducted by NY State Senator Joe Addabbo, **75% of residents support QueensLink**, with only 22% supporting QueensWay.
- We have made numerous attempts to work together with QueensWay, but they have refused to add any transit component.
- Queensway had the majority of their USDOT Reconnecting Communities grant funding revoked in the recent “One Big Beautiful Bill”.

## LANDSLIDE WIN!

The People have spoken in  
Addabbo's Constituent Poll!

Do you support **QueensLink** or **QueensWay**?



Source: 2024 poll of 523 constituents from 9 neighborhoods...

