



Implementation

Community Board 10
Spring 2025



Why we're doing it

It's been several decades since we made major changes to Queens bus routes.

Since then, we've seen:

- Development in new areas
- New travel patterns
- Declining reliability

How we got here

Riders identified four priorities for the new network: **reliable service, faster travel, better connections, and simplified service.**

From these priorities, we developed several redesign strategies.

To learn more about the planning process, go to mta.info/queensbusredesign.



1981 Queens Bus Map



Timeline



Community Engagement

250+ total events

68 pop-up events across the system

24 open houses & town halls

25 workshops

41 Community Board meetings

57 stakeholder engagements

43 meetings with elected officials



18,000+ comments

11,000 Original Draft Plan

4,000 New Draft Plan

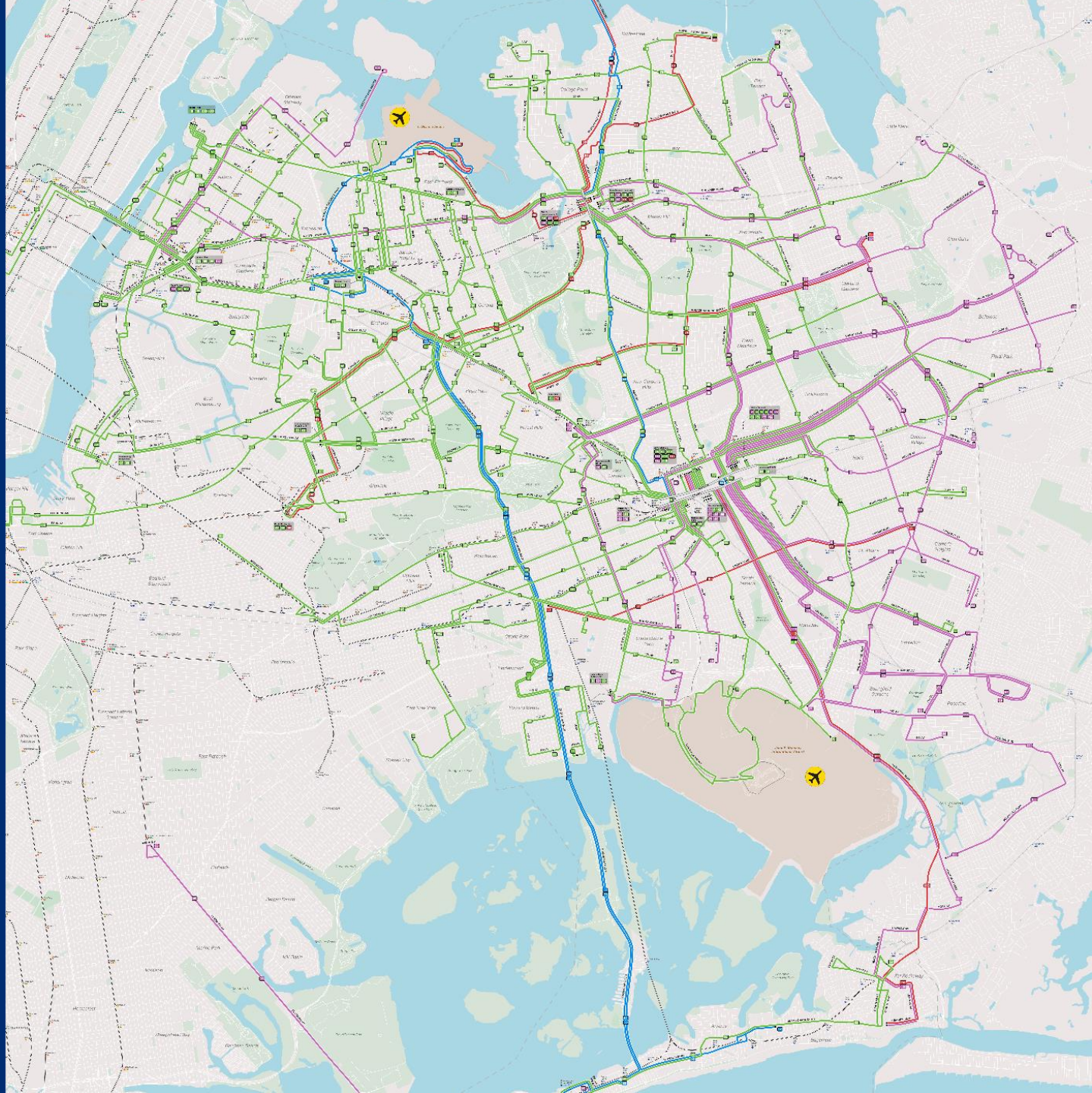
3,000 Proposed Final Plan

Introducing the New Bus Network

124 total routes (vs. 113 existing)

94 Local routes (vs. 83 existing)

30 Express routes (vs. 30 existing)



Expanded access for Queens



124,000

more people will have access to a bus that **arrives every 10 minutes or better**, 6 AM-9 PM (+5% over existing)



68,000

more people will have **access to 24-hour** bus service (+3% over existing)



Changes riders will see



Changes to stops

We're adding, relocating, and removing hundreds of stops to make rides faster, more reliable, and more connected.



Changes to routes

We're rerouting some routes for faster and more direct service. And some routes are getting new numbers.



New routes

We're expanding the network with new and extended routes in more areas.



New Rush routes

Newly designed routes make local stops far from the subway, with limited stops on major streets and near hubs.

Implementation

Phasing

Changes by route in two phases

June 29

- 2/3 of routes, largely in Eastern Queens

August 31

- 1/3 of routes, largely in Northwest and Southwest Queens

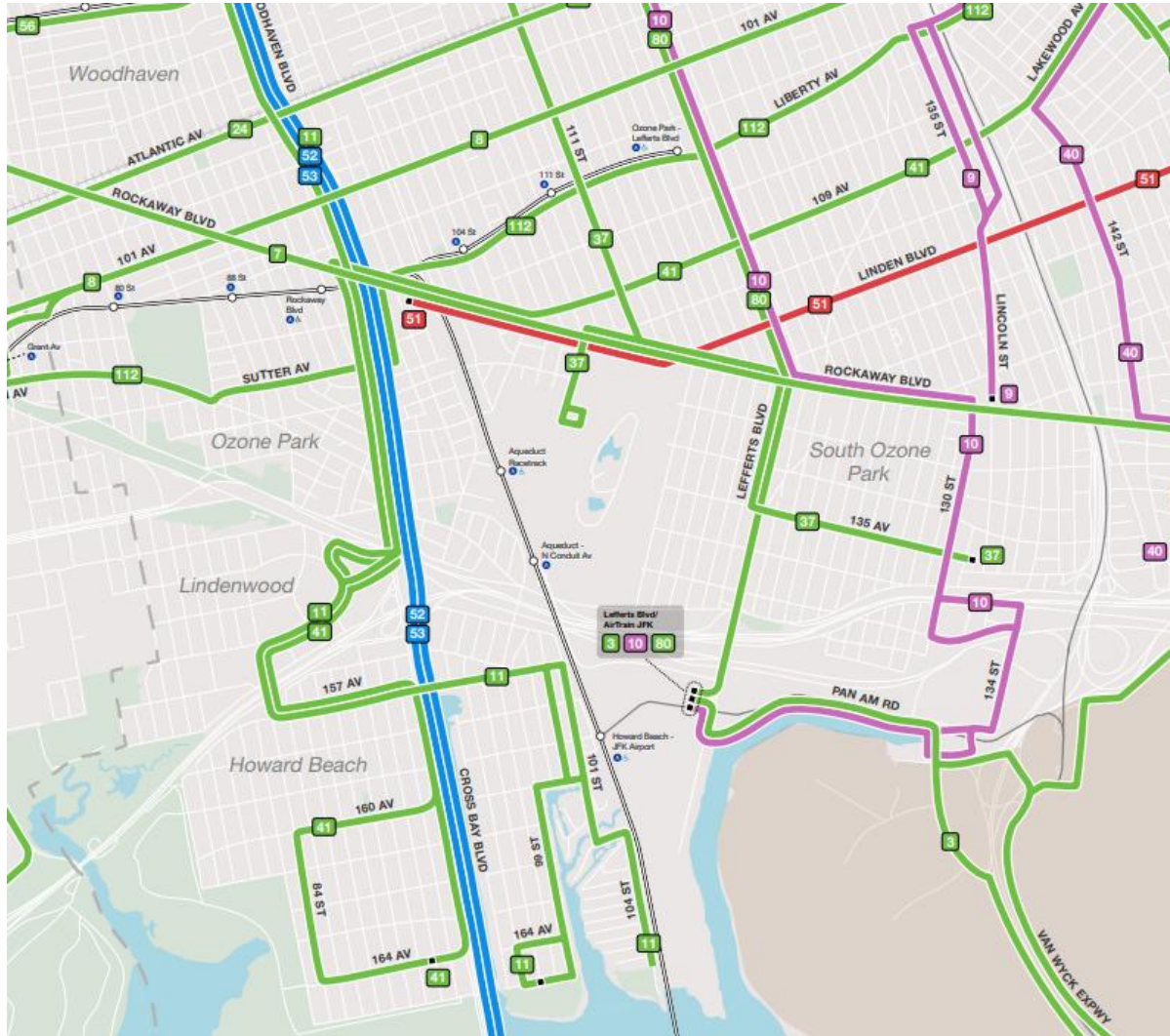
Routes without Sunday service will change on the next regular service day.

Why?

- We're implementing routes by bus depot to minimize inconvenience for riders and operators.



Local

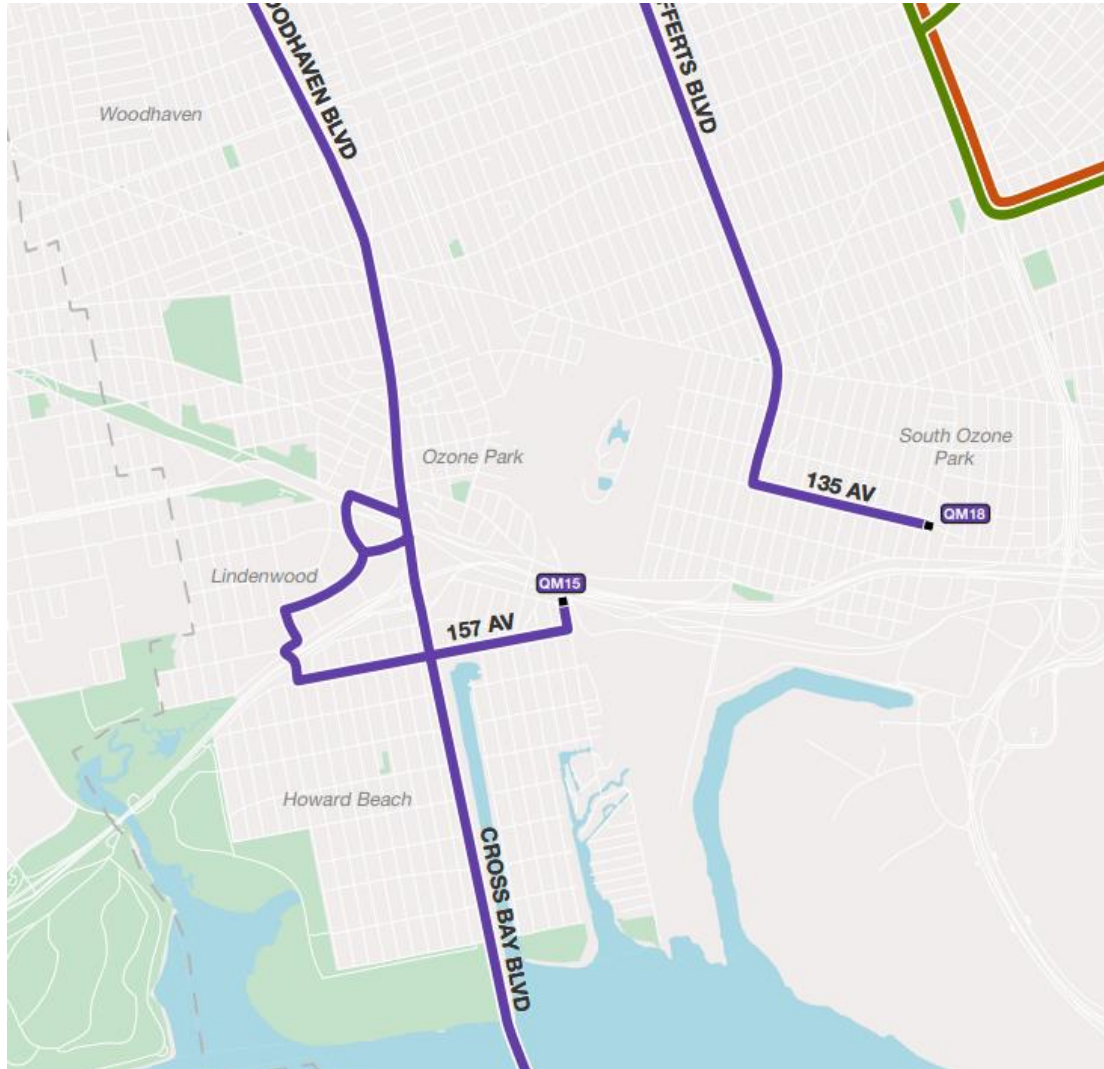


- Q3
- Q51
- Q112

- Q7
- Q8
- Q9
- Q10
- Q11
- Q24
- Q37
- Q52
- Q56
- Q60
- Q80

Changes in Community District 10

Express



August 31

- QM15
- QM16
- QM17
- QM18

Implementation

Bus stop changes

Changes began in February and will continue through the fall in some locations.

- **Current service continues** until the change date for each respective route
- Riders should refer to bus stop Guide-A-Ride boxes and mta.info/queensbus for information about Queens Redesign service changes
- Riders will see new signs at existing bus stops, as well as bus stop signage at new locations due to new routings, changes in route designation, or ADA compliance.



Q111

Starting June 29

The Q111 will make limited stops on Guy R. Brewer Blvd north of Farmers Blvd.

For local stops, take the new Q115, which will run on Guy R. Brewer Blvd between Jamaica and Farmers Blvd.



ESPAÑOL
简体中文
한국어
বাংলা
KREYÒL
РУССКИЙ

mta.info/queensbus



Post at: 147 Av/Huxley St (552297)

Learn about the new network

Route lookup tool

Search for your route at
mta.info/queensbus

- Select one or more routes at a time
- See date of change and other key information
 - Route-specific page
 - Stop lists
 - Service alternatives

Additional resources on this page

- Future Trip Planner
- Phasing guide (static map and table)
- Interactive Remix map

We're introducing a new Queens bus network. We're expanding the all-day frequent network, adding new overnight service, removing some stops, and adding new connections to major destinations and transfer points.

Changes to the Queens bus network will go into effect in two phases:

- Phase 1: June 29, 2025
- Phase 2: August 31, 2025

Routes without Sunday service will change on either June 30 or September 2.

What's changing

We've taken a fresh look at the map to bring you faster, more reliable service with better connections. To do this, most bus routes have changed, which includes:

- New bus routes and route numbers.
- New Rush routes that get you to the subway faster.
- Changes to bus stops, including stops being relocated or removed.
- Routing changes to reduce turns.

We're updating bus stop signs to prepare for service changes that will be phased in by route on June 29 and August 31, 2025. Current service continues until then, but some signs will reflect future service. Use the [MTA app](#) or [BusTime](#) to plan your trip.

Search for your bus route to see changes and when they're happening.

Search for your bus route

Q1

Q1

Changes to the Q1 take effect June 29, 2025.

The Q1 will be extended west along Hillside Av to Sutphin Blvd. Some stops have been removed. [View the full list of stops.](#)
The [Q36](#) will replace existing Springfield Blvd service.

[Get more details on Q1 service.](#)

Learn about the new network

Future Trip Planner

Check out your trip on the fully-implemented network at futuretrips.mta.info

- Enter your starting and ending locations to see travel options
- Select dates between September 7-13
- Drag and drop start and end flags to see additional trip options

Between phases, riders should use the **MTA App** or **Bus Time** for the most accurate and up-to-date service information.

The screenshot displays the Future Trip Planner interface. At the top, there are input fields for the starting location "From 221-25 56th Ave, Bayside, NY 11364..." and the ending location "To 37-17 108th St, Flushing, NY 11368, USA". Below these are buttons for the date "09/0", a calendar icon, a "Depart by" dropdown, the time "11:0", and a clock icon. A "Show Settings" link with a downward arrow is also present. A large blue "Submit" button with a magnifying glass icon is at the bottom of the form.

Below the form, a map of Queens, NY, is shown. Three travel options are listed on the left side of the map:

- Option 1: 55 min**
Route: Walk → Bus Q74 → Bus Q23 → Walk
Time: 11:19am - 12:14pm
- Option 2: 63 min**
Route: Walk → Bus Q74 → Bus Q23 → Walk
Time: 11:49am - 12:52pm
- Option 3: 57 min**
Route: Walk → Bus Q74 → Bus Q23 → Walk
Time: 12:19pm - 1:16pm

The map shows the route for Option 1 in red, starting from Bayside and ending in Flushing. The route includes stops at Bayside, Flushing Meadows-Corona Park, and Flushing. The map also shows other landmarks like the Louis Armstrong House Museum and the Queens Botanical Garden.

Learn about implementation

Project Phasing Guide

- Shows the date every route changes
- Available to view or download on the project webpage with a corresponding color-coded map

Project Phasing Guide

Queens bus service is changing in two phases in summer 2025. Most routes will change on either June 29 or August 31. Routes without Sunday service will change on either June 30 or September 2. Current bus service continues until the listed date.

Route	Change date
Q1	June 29
Q2	June 29
Q3	June 29
Q4	June 29
Q5	June 29
Q6	August 31
Q7	August 31
Q8	August 31
Q9	August 31
Q10	August 31
Q11	August 31
Q12	June 29
Q13	June 29
Q14	June 29
Q15	June 29
Q15A*	June 29
Q16	June 29
Q17	June 29
Q18	August 31
Q19	August 31
Q20	June 29

Route	Change date
Q20A*	June 29
Q20B*	June 27
Q21*	August 31
Q22	August 31
Q23	June 29
Q24	August 31
Q25	June 29
Q26	June 29
Q27	June 29
Q28	June 29
Q29	June 29
Q30	June 29
Q31	June 29
Q32	August 31
Q33	August 31
Q34*	June 27
Q35	August 31
Q36	June 29
Q37	August 31
Q38	June 29
Q39	June 29

Route	Change date
Q40	August 31
Q41	August 31
Q42	June 30
Q43	June 29
Q44	No changes
Q45	June 29
Q46	June 29
Q47	August 31
Q48**	June 29
Q49	August 31
Q50	June 29
Q51	June 29
Q52	August 31
Q53	No changes
Q54	June 29
Q55	June 29
Q56	August 31
Q58	June 29
Q59	June 29
Q60	August 31
Q61	June 29

Route	Change date
Q63	June 29
Q64	June 29
Q65	June 29
Q66	June 29
Q67	June 29
Q69	August 31
Q70	No changes
Q72	August 31
Q74	June 29
Q75	June 30
Q76	June 29
Q77	June 29
Q80	August 31
Q82	June 29
Q83	June 29
Q84	June 29
Q85	June 29
Q86	June 29
Q87	June 29
Q88	June 29
Q89	June 29
Q90	June 29
Q98	June 29
Q100	August 31
Q101	August 31
Q102	August 31

Route	Change date
Q103	August 31
Q104	August 31
Q110	June 29
Q111	June 29
Q112	June 29
Q113	June 29
Q114	June 29
Q115	June 29
B57	August 31
B62	August 31
QM1	June 30
QM2	June 29
QM3*	June 27
QM4	June 29
QM5	June 29
QM6	June 29
QM7	June 30
QM8	June 30
QM10	June 30
QM11	June 30
QM12	June 30
QM15	September 2
QM16	September 2
QM17	September 2
QM18	September 2
QM20	June 30

Route	Change date
QM21	June 30
QM24	September 2
QM25	September 2
QM31	June 30
QM32	June 30
QM34	September 2
QM35	June 30
QM36	June 30
QM40	June 30
QM42	June 30
QM44	June 30
X63/QM63	June 30
X64/QM64	June 30
QM65	June 30
X68/QM68	June 30

* These routes will be discontinued on or after the listed date. For service alternatives, check mta.info/queensbus.

** Existing Q48 service between Flushing and LGA Airport ends June 29.

New Q48 service on Union Tpke starts June 30.

Learn more about the new Q48 at mta.info/q48.



Stay connected



Use the **MTA App**



Check **Bus Time**



Call **511**



Sign up for alerts at
mta.info/notify

For information about
project implementation:
mta.info/queensbus



Thank you!



mta.info/queensbus



Project Phasing Guide

Queens bus service is changing in two phases in summer 2025. Most routes will change on either **June 29** or **August 31**. Routes without Sunday service will change on either June 30 or September 2. Current bus service continues until the listed date.

Route	Change date	Route	Change date	Route	Change date
Q1	June 29	Q20A*	June 29	Q40	August 31
Q2	June 29	Q20B*	June 27	Q41	August 31
Q3	June 29	Q21*	August 31	Q42	June 30
Q4	June 29	Q22	August 31	Q43	June 29
Q5	June 29	Q23	June 29	Q44	No changes
Q6	August 31	Q24	August 31	Q45	June 29
Q7	August 31	Q25	June 29	Q46	June 29
Q8	August 31	Q26	June 29	Q47	August 31
Q9	August 31	Q27	June 29	Q48**	June 29
Q10	August 31	Q28	June 29	Q49	August 31
Q11	August 31	Q29	June 29	Q50	June 29
Q12	June 29	Q30	June 29	Q51	June 29
Q13	June 29	Q31	June 29	Q52	August 31
Q14	June 29	Q32	August 31	Q53	No changes
Q15	June 29	Q33	August 31	Q54	June 29
Q15A*	June 29	Q34*	June 27	Q55	June 29
Q16	June 29	Q35	August 31	Q56	August 31
Q17	June 29	Q36	June 29	Q58	June 29
Q18	August 31	Q37	August 31	Q59	June 29
Q19	August 31	Q38	June 29	Q60	August 31
Q20	June 29	Q39	June 29	Q61	June 29

Route	Change date
Q63	June 29
Q64	June 29
Q65	June 29
Q66	June 29
Q67	June 29
Q69	August 31
Q70	No changes
Q72	August 31
Q74	June 29
Q75	June 30
Q76	June 29
Q77	June 29
Q80	August 31
Q82	June 29
Q83	June 29
Q84	June 29
Q85	June 29
Q86	June 29
Q87	June 29
Q88	June 29
Q89	June 29
Q90	June 29
Q98	June 29
Q100	August 31
Q101	August 31
Q102	August 31

Route	Change date
Q103	August 31
Q104	August 31
Q110	June 29
Q111	June 29
Q112	June 29
Q113	June 29
Q114	June 29
Q115	June 29
B57	August 31
B62	August 31
QM1	June 30
QM2	June 29
QM3*	June 27
QM4	June 29
QM5	June 29
QM6	June 29
QM7	June 30
QM8	June 30
QM10	June 30
QM11	June 30
QM12	June 30
QM15	September 2
QM16	September 2
QM17	September 2
QM18	September 2
QM20	June 30

Route	Change date
QM21	June 30
QM24	September 2
QM25	September 2
QM31	June 30
QM32	June 30
QM34	September 2
QM35	June 30
QM36	June 30
QM40	June 30
QM42	June 30
QM44	June 30
X63/QM63	June 30
X64/QM64	June 30
QM65	June 30
X68/QM68	June 30

* These routes will be discontinued on or after the listed date. For service alternatives, check mta.info/queensbus.

** Existing Q48 service between Flushing and LGA Airport ends June 29.

New Q48 service on Union Tpke starts June 30.
Learn more about the new Q48 at mta.info/q48.



Q3 Farmers Boulevard

Service between Jamaica and JFK Airport

Changes take effect June 29, 2025

The Q3 will keep its current routing, but some stops have been removed.

EXISTING ROUTES

Q3

CONNECTIONS



LIRR

AirTrain JFK

B15, Q1, Q2, Q4, Q5, Q6,
Q7, Q8, Q9, Q10, Q17,
Q30, Q31, Q36, Q41, Q43,
Q51, Q54, Q56, Q75, Q76,
Q77, Q80, Q82, Q83, Q84,
Q85, Q86, Q87, Q89, Q110,
Q111, Q113, Q114, Q115

AVERAGE STOP SPACING

Existing: 739 ft

Proposed: 1,119 ft



Phase 1

Q7 Rockaway Boulevard

Service between JFK Travel Plaza and Cypress Hills

Changes take effect August 31, 2025

The Q7 will be rerouted on its western end to provide new service along Rockaway Blvd between Liberty and Jamaica Aves.

Current Q7 service to East New York along Sutter and Pitkin Aves will be discontinued and replaced by the Q112.

On its eastern end, the Q7 will be shortened to the JFK Travel Plaza. Service to JFK Cargo Area C will be provided by Port Authority shuttles and the Q3.

EXISTING ROUTES

Q7

CONNECTIONS

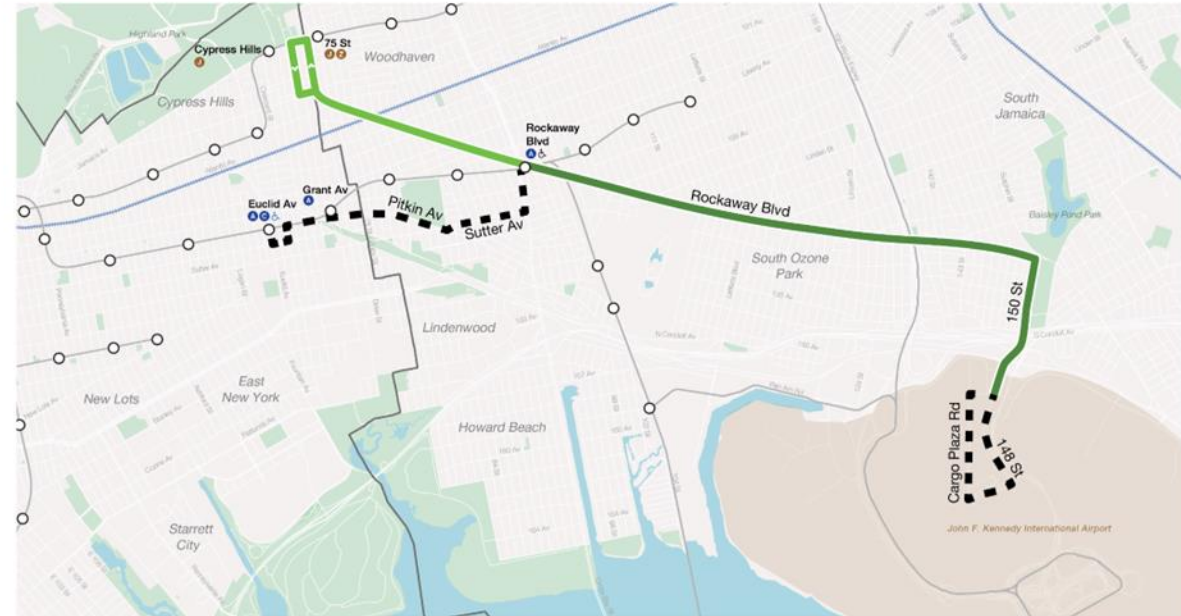
A J Z

Q3, Q6, Q8, Q9, Q10, Q11, Q24, Q37, Q40, Q41, Q51, Q52-SBS, Q53-SBS, Q56, Q80, Q112

AVERAGE STOP SPACING

Existing: 775 ft

Proposed: 1,098 ft



- Existing Service
- - - Added Service
- - - - Discontinued Service
- Subway
- Accessible Stations
- Future Accessible Stations
- +—+— LIRR

Phase 2

Q8

101st Avenue

Service between Jamaica and Gateway Center

Changes take effect August 31, 2025

The Q8 will keep its current routing, but some stops have been removed.

EXISTING ROUTES

Q8

CONNECTIONS

A C E J Z

LIRR

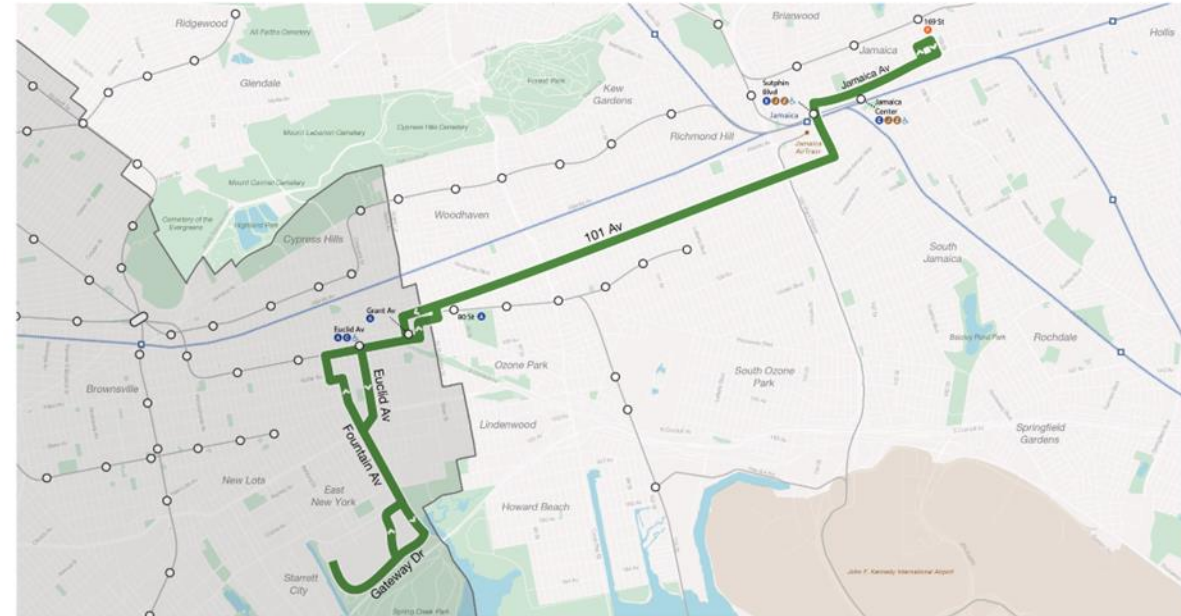
AirTrain JFK

B13, B14, B15, B20, B83,
B84, Q1, Q2, Q3, Q4, Q5,
Q6, Q7, Q9, Q10, Q11,
Q17, Q20, Q24, Q25, Q30,
Q31, Q36, Q37, Q40, Q41,
Q42, Q43, Q44-SBS, Q52-
SBS, Q53-SBS, Q54, Q56,
Q60, Q65, Q75, Q76, Q77,
Q80, Q82, Q83, Q84, Q85,
Q86, Q87, Q89, Q110,
Q111, Q112, Q113, Q114,
Q115

AVERAGE STOP SPACING

Existing: 920 ft

Proposed: 1,266 ft



- Existing Service
- Added Service
- - - - Discontinued Service
- Subway
- ♿ Accessible Stations
- ♿ Future Accessible Stations
- + + + + LIRR

Phase 2

Q9 Jamaica – South Ozone Park

Changes take effect August 31, 2025

The Q9 will keep its current routing, but make limited stops along Liberty Av and Sutphin Blvd.

For local service on Liberty Av, take the Q112.

For local service on Sutphin Blvd, take the Q41 or Q60.

EXISTING ROUTES

Q9

CONNECTIONS

E J Z

LIRR

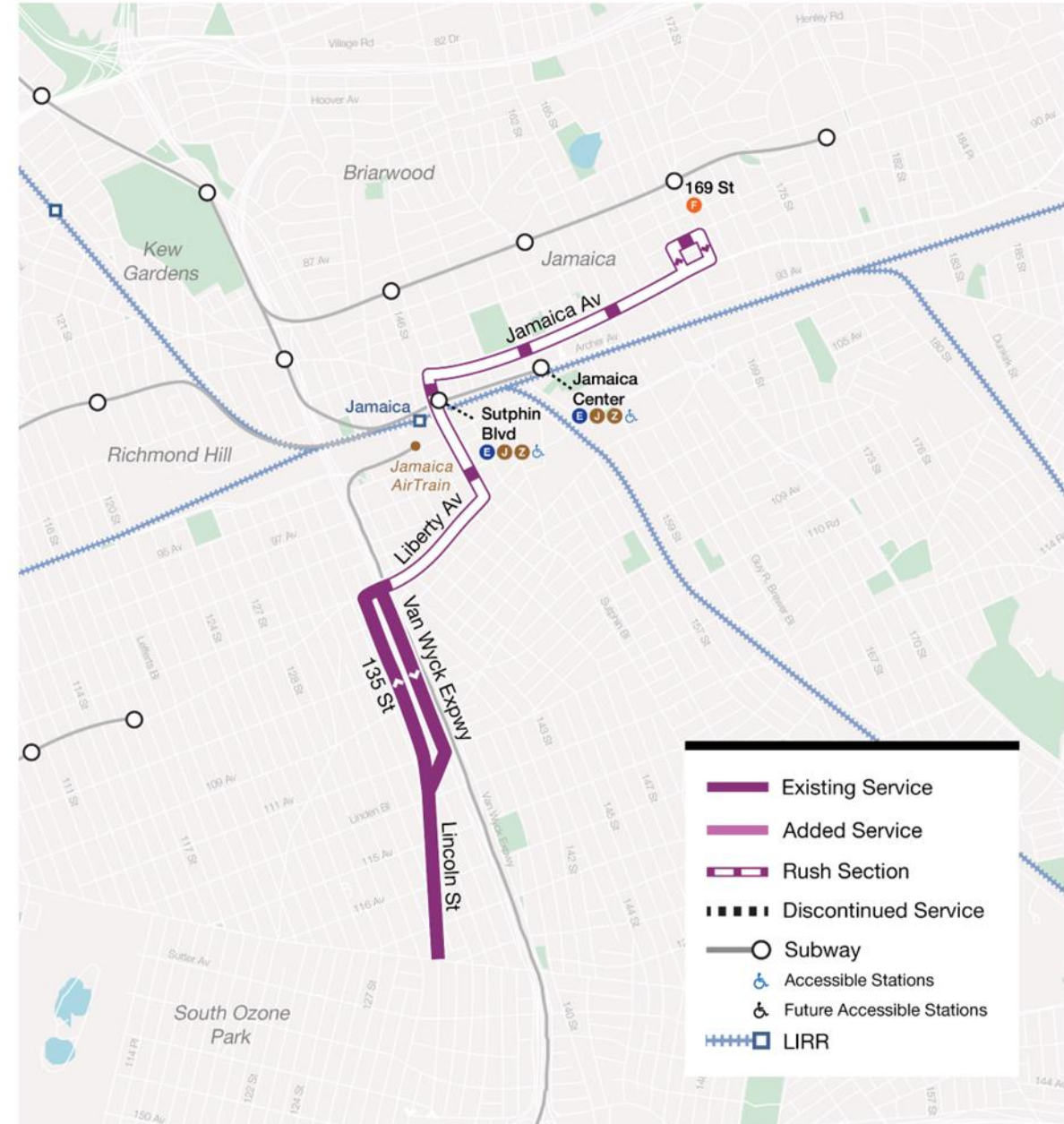
AirTrain JFK

Q1, Q2, Q3, Q4, Q5, Q6,
Q7, Q8, Q10, Q17, Q20,
Q24, Q25, Q30, Q31, Q36,
Q40, Q41, Q42, Q43, Q44-
SBS, Q51, Q54, Q56, Q60,
Q65, Q75, Q76, Q77, Q82,
Q83, Q84, Q85, Q86, Q87,
Q89, Q110, Q111, Q112,
Q113, Q114, Q115

AVERAGE STOP SPACING

Existing: 819 ft

Proposed: 1177 ft



Phase 2

Q10 Kew Gardens – JFK Airport

Changes take effect August 31, 2025

The Q10 will keep its current routing, making but make limited stops along Lefferts Blvd. The Q10 Limited will be discontinued.

For local service on Lefferts Blvd from Kew Gardens to JFK Airport, take the new Q80.

EXISTING ROUTES

Q10

CONNECTIONS

A E F J Z

LIRR

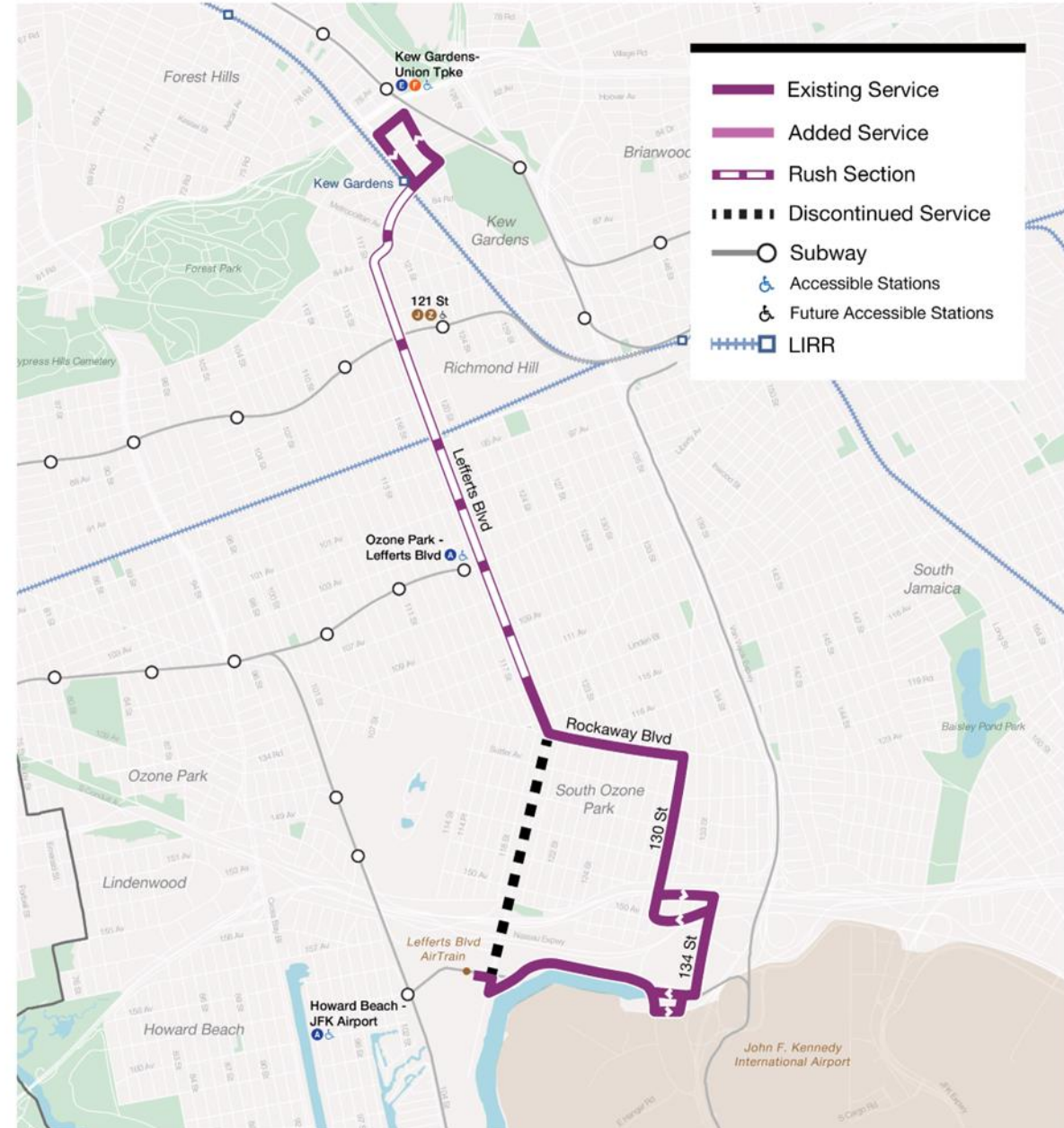
AirTrain JFK

B15, Q3, Q7, Q8, Q9, Q24,
Q37, Q41, Q45, Q46, Q48,
Q51, Q54, Q55, Q56, Q60,
Q112

AVERAGE STOP SPACING

Existing: 931 ft

Proposed: 1,005 ft



Phase 2

Q11

Woodhaven Boulevard

Service between Elmhurst and Howard Beach

Changes take effect August 31, 2025

The Q11 will be combined with the Q21. Existing Q11 service between 157 Av and Pitkin Av will be discontinued. Riders can instead use the A, Q52-SBS/ Q53-SBS, or rerouted Q11.

Some stops have been removed from this route.

EXISTING ROUTES

Q11, Q21

CONNECTIONS

A J Z M R

AirTrain JFK

Q7, Q8, Q14, Q23, Q24,
Q29, Q38, Q41, Q51, Q52-
SBS, Q53-SBS, Q54, Q55,
Q56, Q59, Q60, Q88, Q98,
Q112

AVERAGE STOP SPACING

Existing: 975 ft

Proposed: 1,267 ft



Phase 2

Q37

111th Street

Service between Kew Gardens and South Ozone Park

Changes take effect August 31, 2025

The Q37 will still serve 111 St but will be rerouted from 114 St and 133 Av to Rockaway Blvd and Lefferts Blvd.

Some stops have been removed.

EXISTING ROUTES

Q37

CONNECTIONS

A E F J

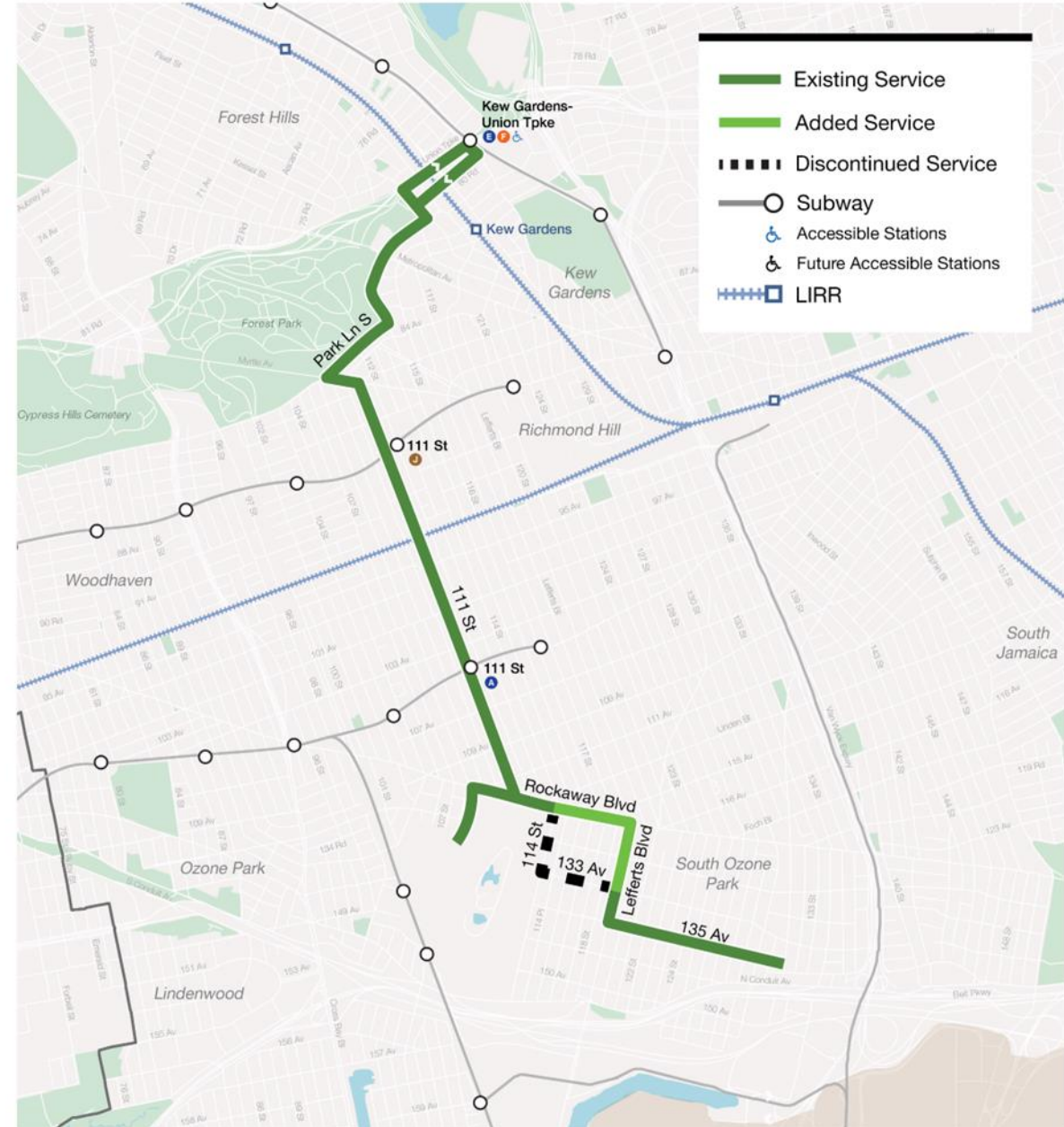
Q7, Q8, Q10, Q24, Q41,
Q45, Q46, Q48, Q54, Q55,
Q56, Q60, Q80, Q112

AVERAGE STOP SPACING

Existing: 985 ft

Proposed: 1,271 ft

Phase 2



Q41

109th Avenue

Service between Jamaica and Howard Beach

Changes take effect August 31, 2025

The Q41 will be extended along 109 Av and Sutphin Blvd. Q41 service along 127/128 Sts and Atlantic Av in South Richmond Hill will be discontinued. As an alternative, take the Q8, Q24, rerouted Q41, or Q112.

Some stops have been removed.

EXISTING ROUTES

Q41

CONNECTIONS

A E J Z

LIRR

AirTrain JFK

B15, Q1, Q2, Q3, Q4, Q5, Q6, Q7, Q8, Q9, Q10, Q11, Q17, Q20, Q24, Q25, Q30, Q31, Q36, Q37, Q40, Q42, Q43, Q44-SBS, Q51, Q52-SBS, Q53-SBS, Q54, Q56, Q60, Q65, Q75, Q76, Q77, Q80, Q82, Q83, Q84, Q85, Q86, Q87, Q89, Q110, Q111, Q112, Q113, Q114, Q115

AVERAGE STOP SPACING

Existing: 888 ft

Proposed: 1,295 ft



Phase 2

Q51

Linden Boulevard

Service between Cambria Heights and Ozone Park

New service starts June 29, 2025

The Q51 will provide a new east-west link along Linden Blvd between Cambria Heights and Ozone Park.

EXISTING ROUTES

N/A

CONNECTIONS

A

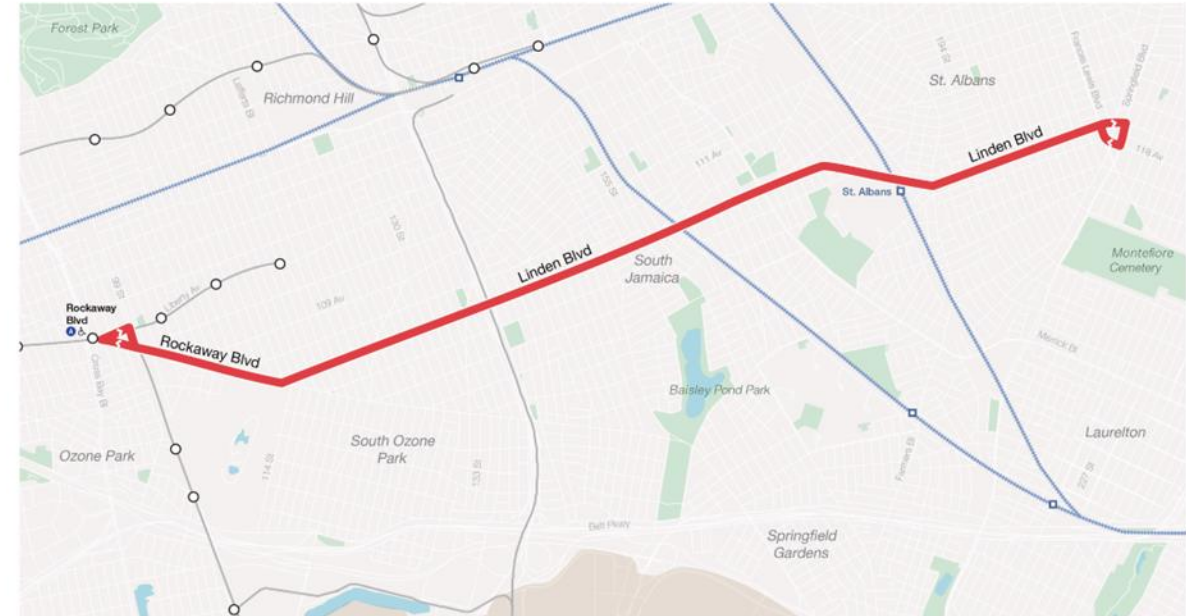
LIRR

Q3, Q4, Q5, Q6, Q7, Q9,
Q10, Q11, Q27, Q40, Q41,
Q52-SBS, Q53-SBS, Q77,
Q80, Q84, Q85, Q86, Q87,
Q89, Q111, Q112, Q113,
Q114, Q115

AVERAGE STOP SPACING

Existing: N/A

Proposed: 2,356 ft



Phase 1

Q52 Elmhurst – Edgemere

Changes take effect August 31, 2025

The Q52 will be extended further east to Beach 50 St in Edgemere. You must use OMNY to pay your fare if you board at Beach Channel Dr and Beach 51 St.

EXISTING ROUTES

Q52

CONNECTIONS

A J Z M R S

Q7, Q8, Q11, Q14, Q22, Q23, Q24, Q29, Q38, Q41, Q51, Q53-SBS, Q54, Q55, Q56, Q59, Q60, Q88, Q98, Q112

AVERAGE STOP SPACING

Existing: 2,802 ft

Proposed: 2,684 ft

Phase 2



Q53 Woodside – Rockaway Park

There are no changes to the Q53

EXISTING ROUTES

Q53

CONNECTIONS

7 A E F M J Z R S

LIRR

Q7, Q8, Q11, Q14, Q18,
Q22, Q23, Q24, Q29, Q32,
Q33, Q35, Q38, Q41, Q47,
Q49, Q51, Q52-SBS, Q54,
Q55, Q56, Q58, Q59, Q60,
Q70-SBS, Q88, Q98, Q112

AVERAGE STOP SPACING

Existing: 2,814 ft

Proposed: 2,814 ft



Q112

Liberty Avenue

Service between Jamaica and East New York

Changes take effect June 29, 2025

The Q112 will be extended west into East New York along Sutter and Pitkin Aves on the current Q7 routing. Some stops have been removed from this route.

EXISTING ROUTES

Q7, Q112

CONNECTIONS

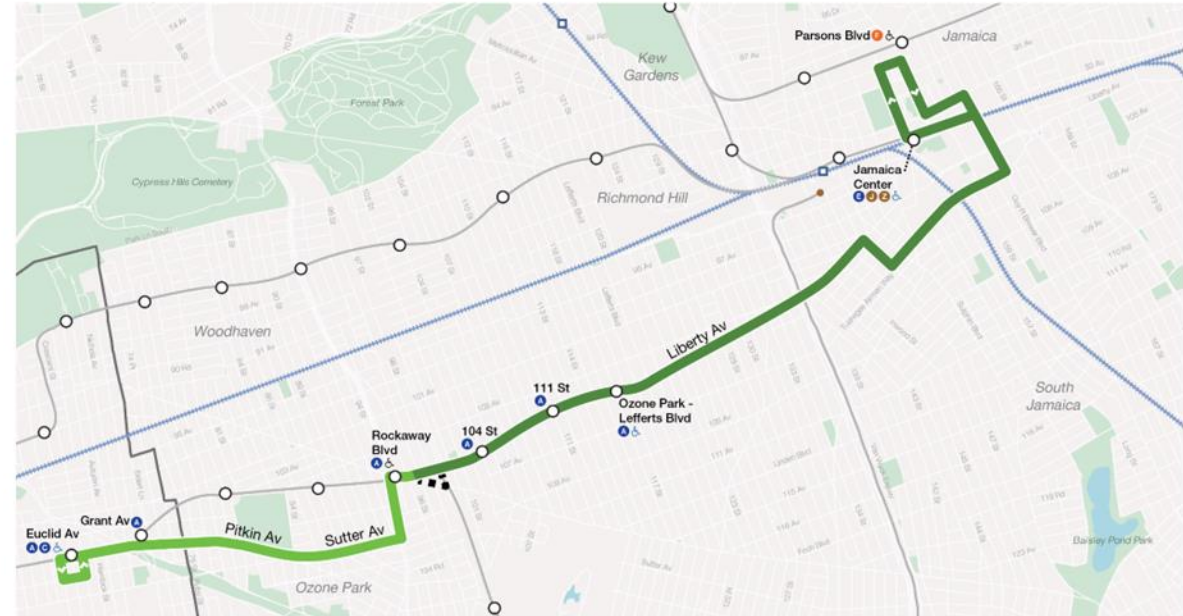
A C E F J Z

B13, Q1, Q4, Q5, Q6, Q7, Q8, Q9, Q10, Q11, Q20, Q24, Q25, Q30, Q31, Q37, Q40, Q41, Q42, Q43, Q44-SBS, Q51, Q52-SBS, Q53-SBS, Q54, Q56, Q60, Q65, Q75, Q80, Q83, Q84, Q85, Q86, Q87, Q89, Q110, Q111, Q113, Q114, Q115

AVERAGE STOP SPACING

Existing: 662 ft

Proposed: 1,165 ft



- Existing Service
- - - Added Service
- ■ ■ ■ Discontinued Service
- Subway
- ♿ Accessible Stations
- ♿ Future Accessible Stations
- + + + + LIRR

Phase 1

QM15

Howard Beach – Midtown

via 6th Avenue

Changes take effect August 31, 2025

The QM15 will keep its current routing. The Queens-bound stop at 153 Av/151 Av been removed. Weekday frequencies will change slightly.

EXISTING ROUTES
QM15

AVERAGE STOP SPACING
Existing: 1,808 ft
Proposed: 1,883 ft



Phase 2



QM16 Rockaways West – Midtown

via 6th Avenue

Changes take effect September 2, 2025

The QM16 will keep its current routing. PM peak frequencies will decrease slightly.

EXISTING ROUTES
QM16

AVERAGE STOP SPACING
Existing: 1,886 ft
Proposed: 1,912 ft



Phase 2

QM17 Rockaways East – Midtown

via 6th Avenue

Changes take effect September 2, 2025

The QM16 will keep its current routing. PM peak frequencies will decrease slightly.

EXISTING ROUTES
QM17

AVERAGE STOP SPACING
Existing: 1,868 ft
Proposed: 1,868 ft



Phase 2

QM18 South Ozone Park – Midtown

via 6th Avenue

Changes take effect September 2, 2025

The QM18 will keep its current routing. Some stops have been changed.

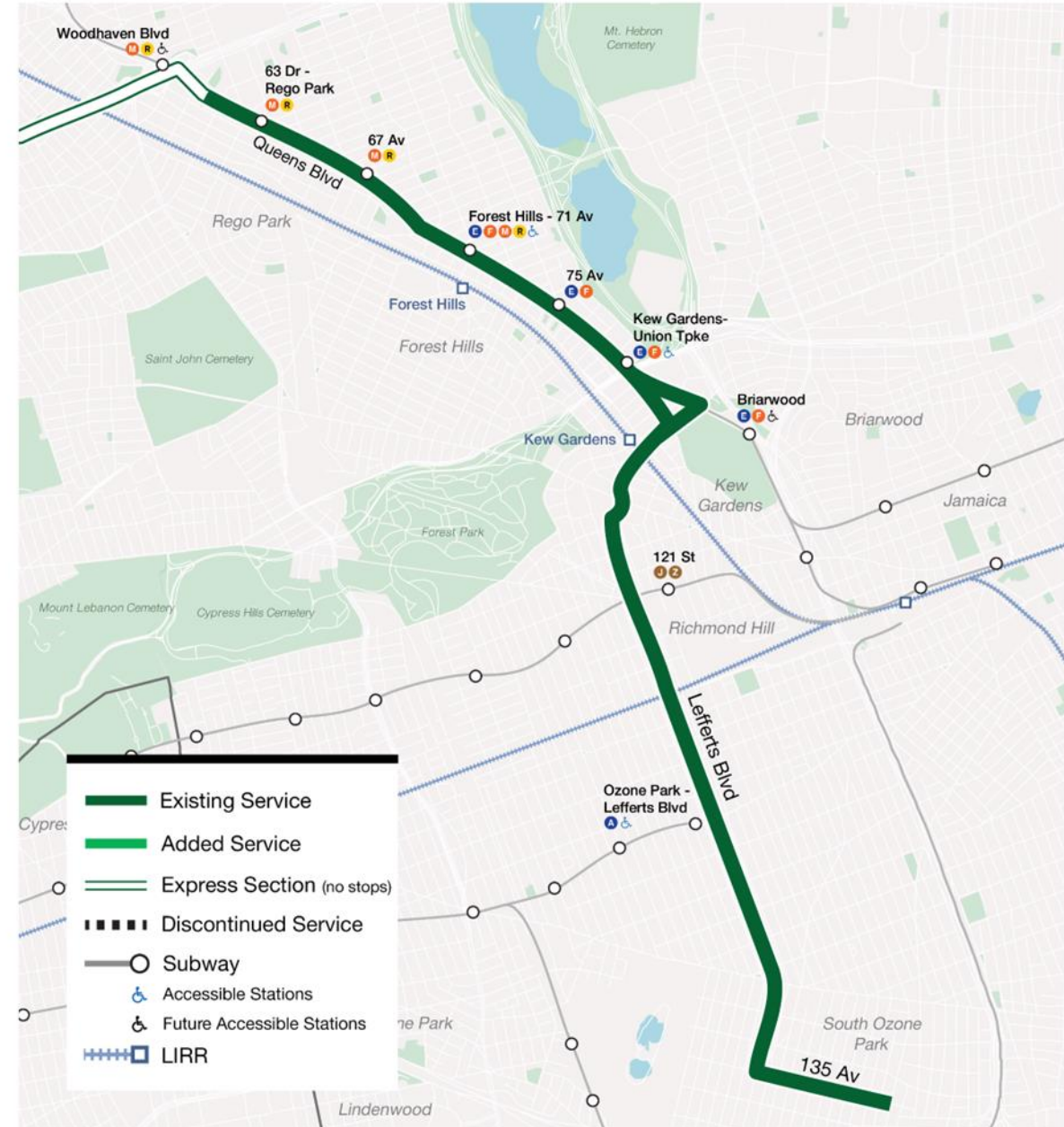
EXISTING ROUTES

QM18

AVERAGE STOP SPACING

Existing: 1,577 ft

Proposed: 1,746 ft



Phase 2