

HOUSING NEW YORK: Zoning for Quality and Affordability

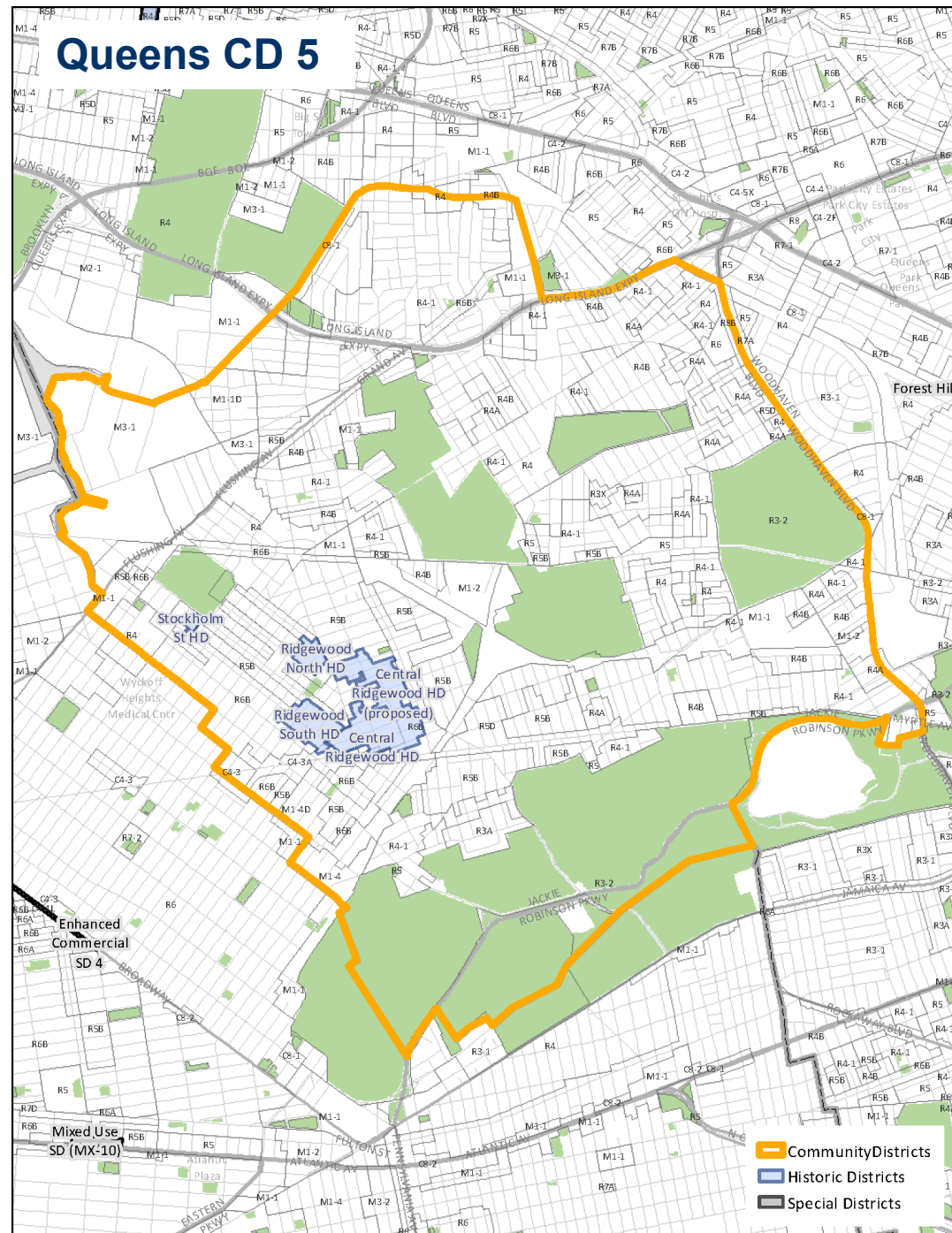
COMMUNITY DISTRICT PROFILE

Queens CD 5

Purpose: To promote affordable housing and foster diverse, livable neighborhoods

Applicability in Queens CD 5

- **Basic Residential Height Changes**
 - Contextual
 - Non-Contextual
- **Senior Housing FAR and Height Changes**
 - Contextual
 - Non-Contextual
- **Parking Changes**
 - Transit Zone
- **Other Reference Maps**
 - Historic Districts



Basic Residential height changes

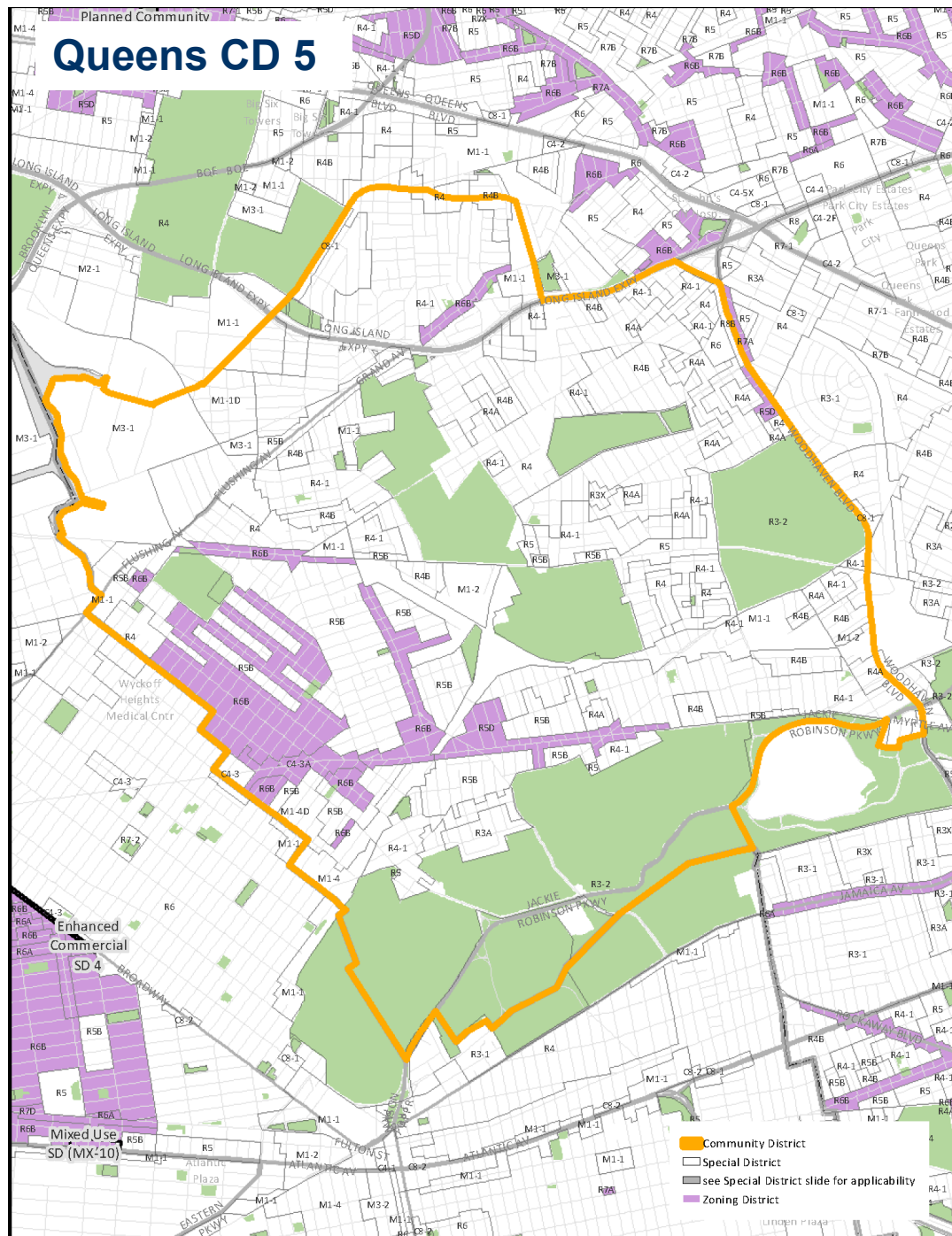
PURPOSE: In many instances, changing regulations and building practices have made it difficult to fit floor area already permitted today within existing building envelopes. Current regulations limit design flexibility and can result in buildings that lack the variation and texture of older apartment buildings. The proposal also provides minor increases in height to encourage housing production and increase design flexibility.

APPLICABILITY: Residential development in moderate and high density zoning districts and their commercial district equivalents.

Contextual Districts: Basic Residential changes

- In order to better accommodate the floor area already permitted today and allow better design, maximum heights would be updated in the contextual districts shaded on the map.

			Basic Modifications	
Res. Equiv.	Zoning District	Existing Max Height	Basic Proposed (Stories)	Basic Height Difference
R5D	R5D	40'	45' (4)	5'
R6A	C4-3A	70'	75' (7)	5'
R6B	R6B	50'	55' (5)	5'



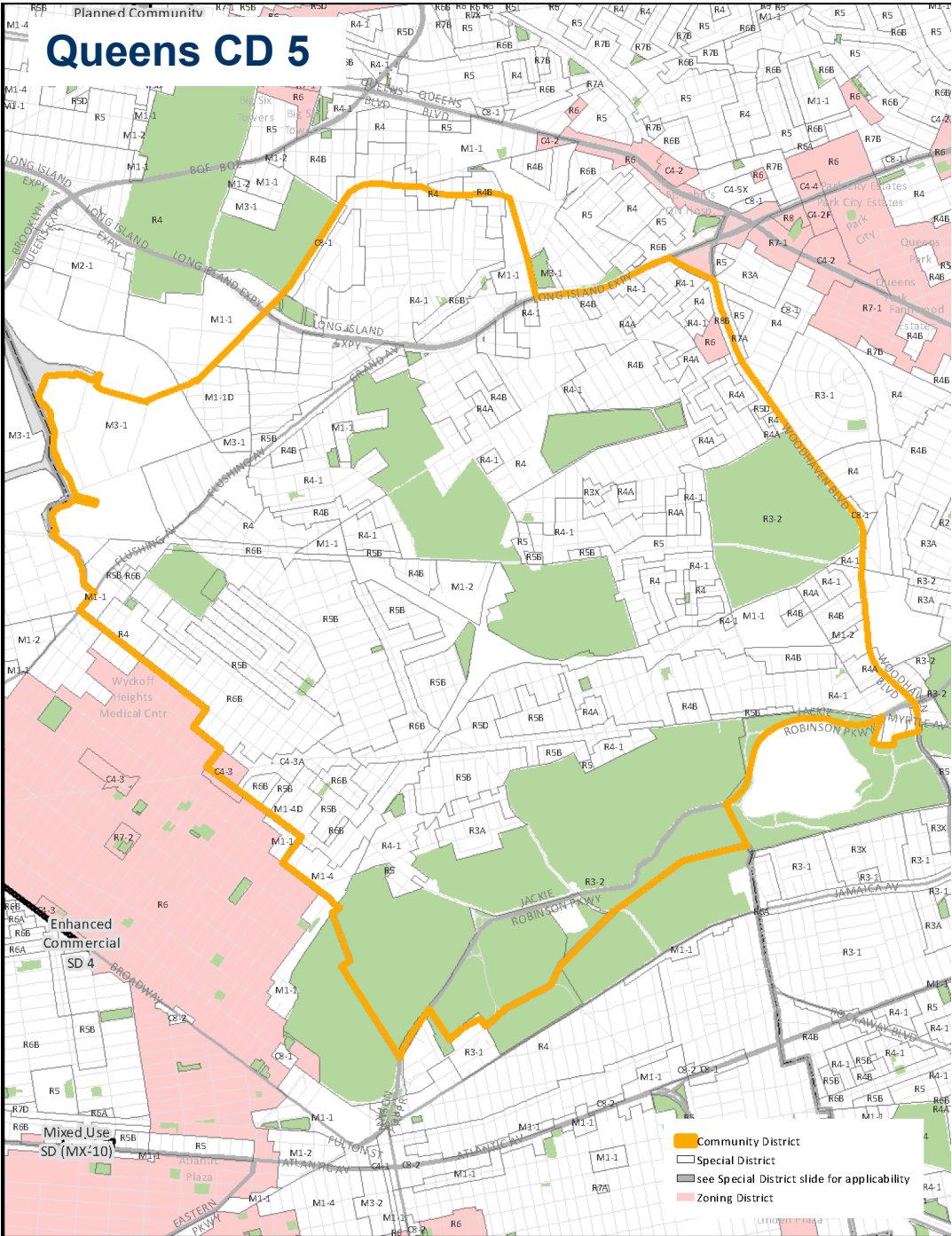
Non-Contextual Districts: Basic Residential changes

- In Non-Contextual Districts, buildings have a “Quality Housing option” similar to the Contextual envelope.
- In order to match the Contextual envelope, the Quality Housing option will be updated in the shaded districts.

Basic Residential Modifications

Res. Equiv.	Zoning District	Existing Max Height	Basic Proposed (Stories)	Basic Height Difference
R6 (narrow)	C4-3	55'	55' (5)	0'
	R6	55'	55' (5)	0'
R6 (wide)	C4-3	70'	75' (7)	5'
	R6	70'	75' (7)	5'

* In addition, developments in R6 through R10 districts could use the applicable Quality Housing option envelope.



Affordable Senior Housing height and floor area changes

PURPOSE: Older New Yorkers are a diverse and rapidly growing segment of the city's population. There is an increasing need for a range of housing and long-term care options for our seniors. The proposal encourages greater housing production and a greater variety of residential options for older New Yorkers.

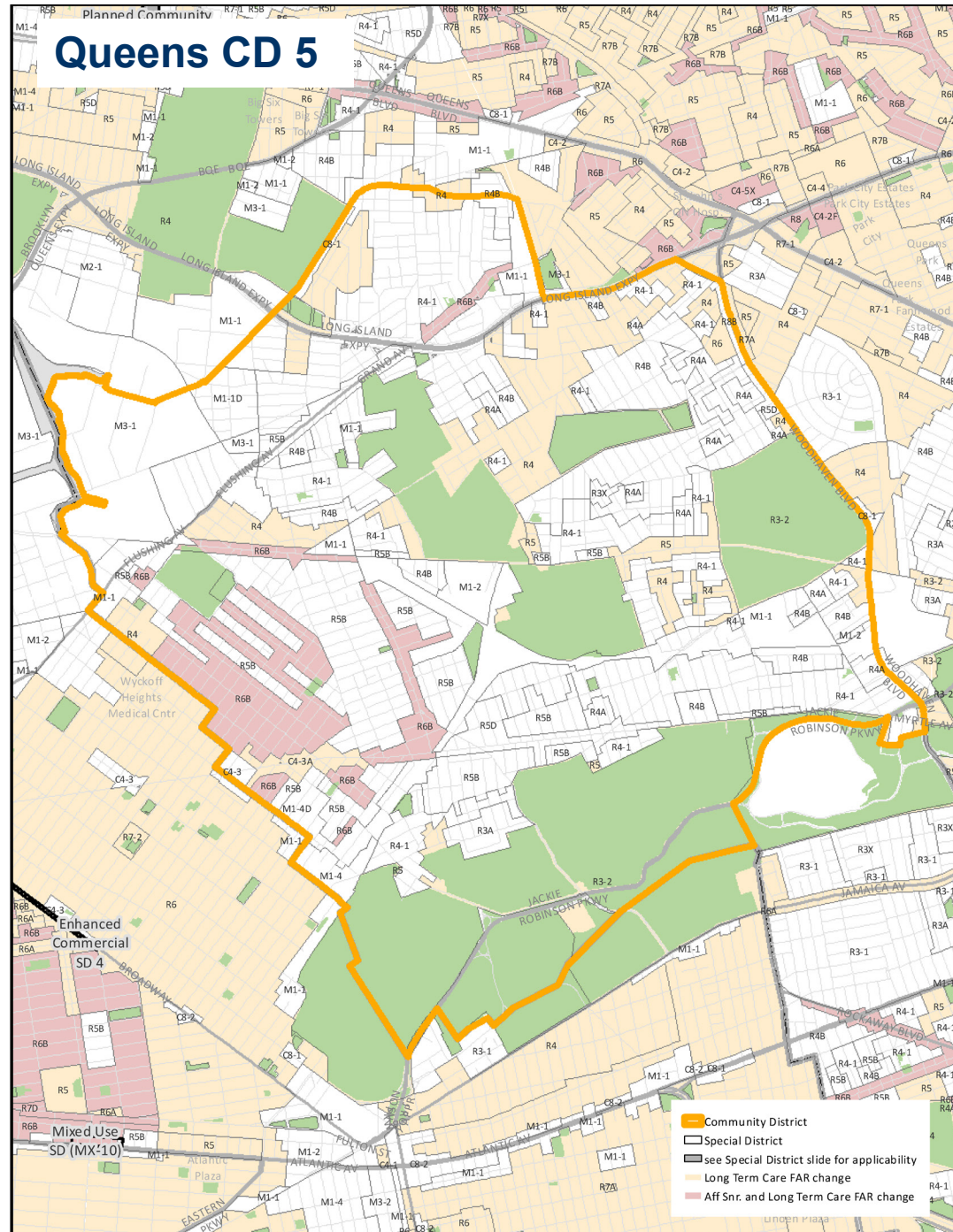
APPLICABILITY: Affordable Independent Residences for Seniors (AIRS) and Long Term Care Facilities (LTCF) in R3-R10 zoning districts and their commercial district equivalents.

Affordable Senior Housing and Long Term Care Floor Area

- Floor area ratio maximums would be updated for certain types of affordable senior housing and long term care facilities in the districts shaded on the map.

Res. Equiv.	Zoning District	Existing nonprofit residences for the elderly (FAR)	Existing Nursing Home and Health Related Facilities (FAR)	PROPOSED
				Aff. Ind. Residences for Seniors and Long Term Care (FAR)
R3-2	R3-2	0.95	0.5	0.95
R4	R4	1.29	0.75	1.29
R5	R5	1.95	1.27	1.95
R6	C4-3	3.9	2.43	3.9
	R6	3.9	2.43	3.9
R6A	C4-3A	3.9	3	3.9
R6B	R6B	2	2	2.2

Queens CD 5

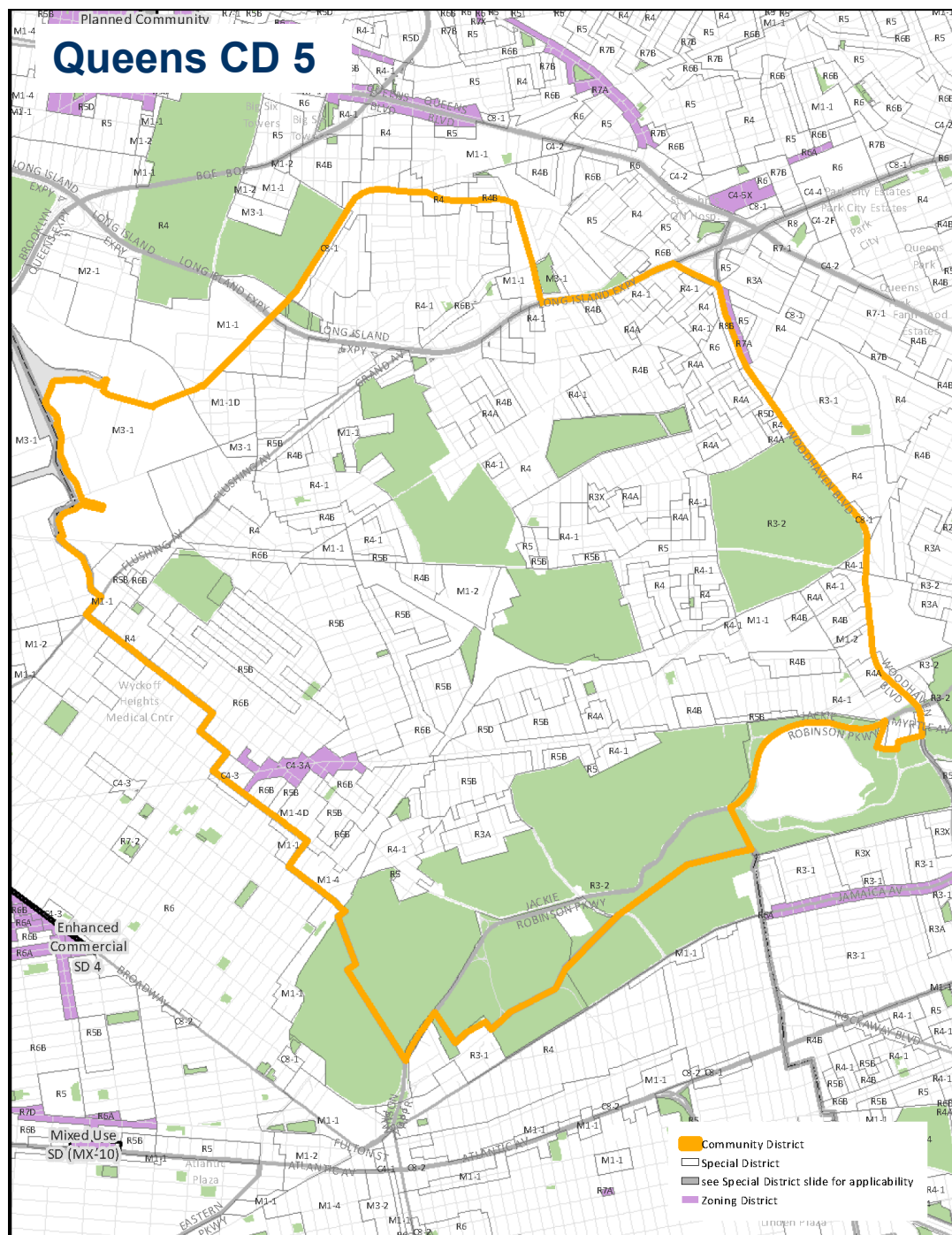


■ Community District
 Special District
 see Special District slide for applicability
 Long Term Care FAR change
 Aff Snr. and Long Term Care FAR change

Affordable Senior Housing and Long Term Care: Contextual districts

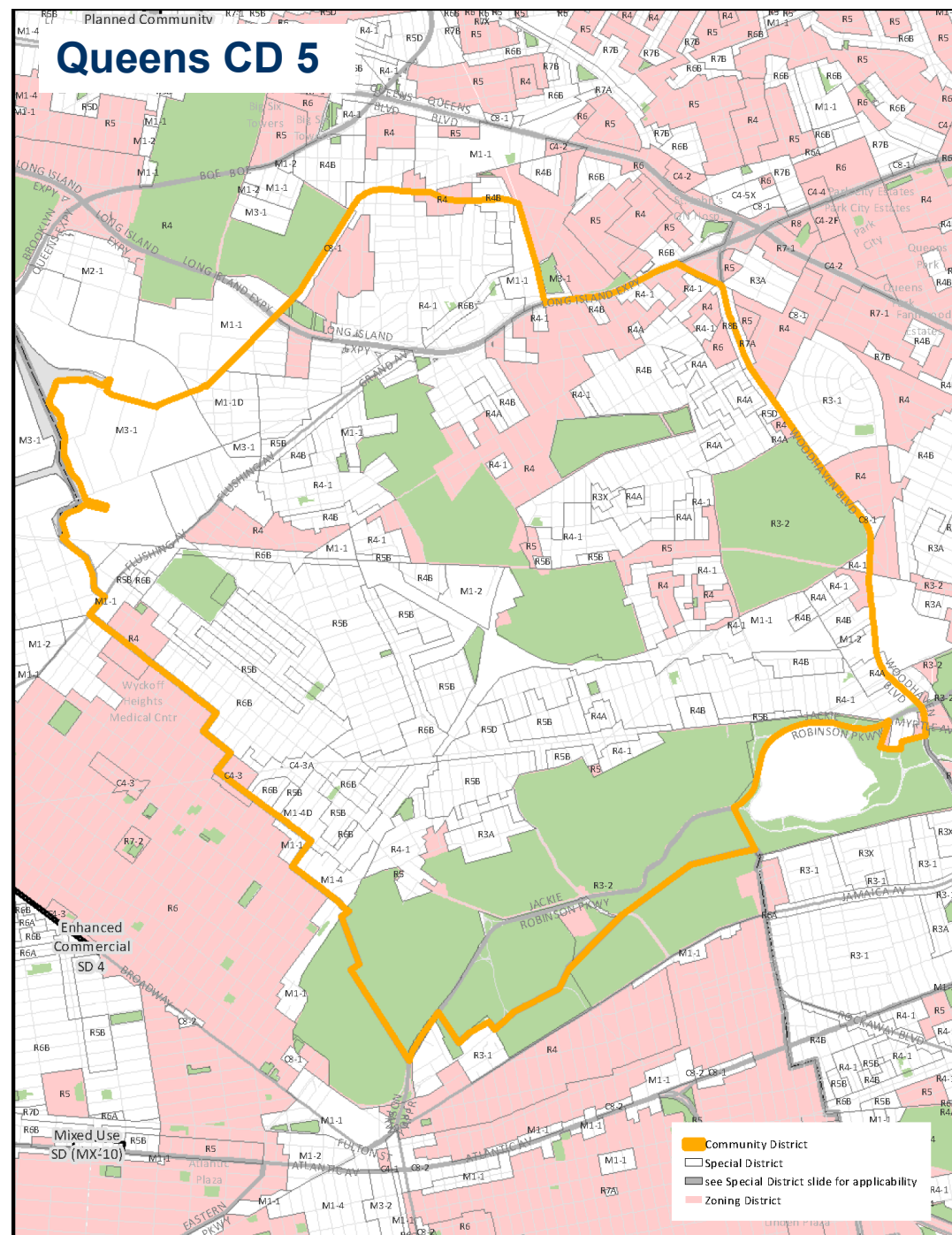
- To better accommodate floor area already permitted today, maximum heights would be updated in the contextual districts shaded on the map.

Res. Equiv.	Zoning District	Existing Height (stories)	Senior Modifications	
			AIRS and LTCF Proposed (Stories)	AIRS and LTCF Height Difference
R6A	C4-3A	75' (7)	85' (8)	10' (1)



Affordable Senior Housing and Long Term Care: Non-Contextual districts

- Currently affordable senior housing developments in non-contextual districts may choose between a height factor building, without fixed height maximums, or a Quality Housing option, which creates a contextual envelope.
- Buildings providing affordable senior housing or long-term care facilities would be able to utilize the enhanced Quality Housing envelope applicable for that zoning district.



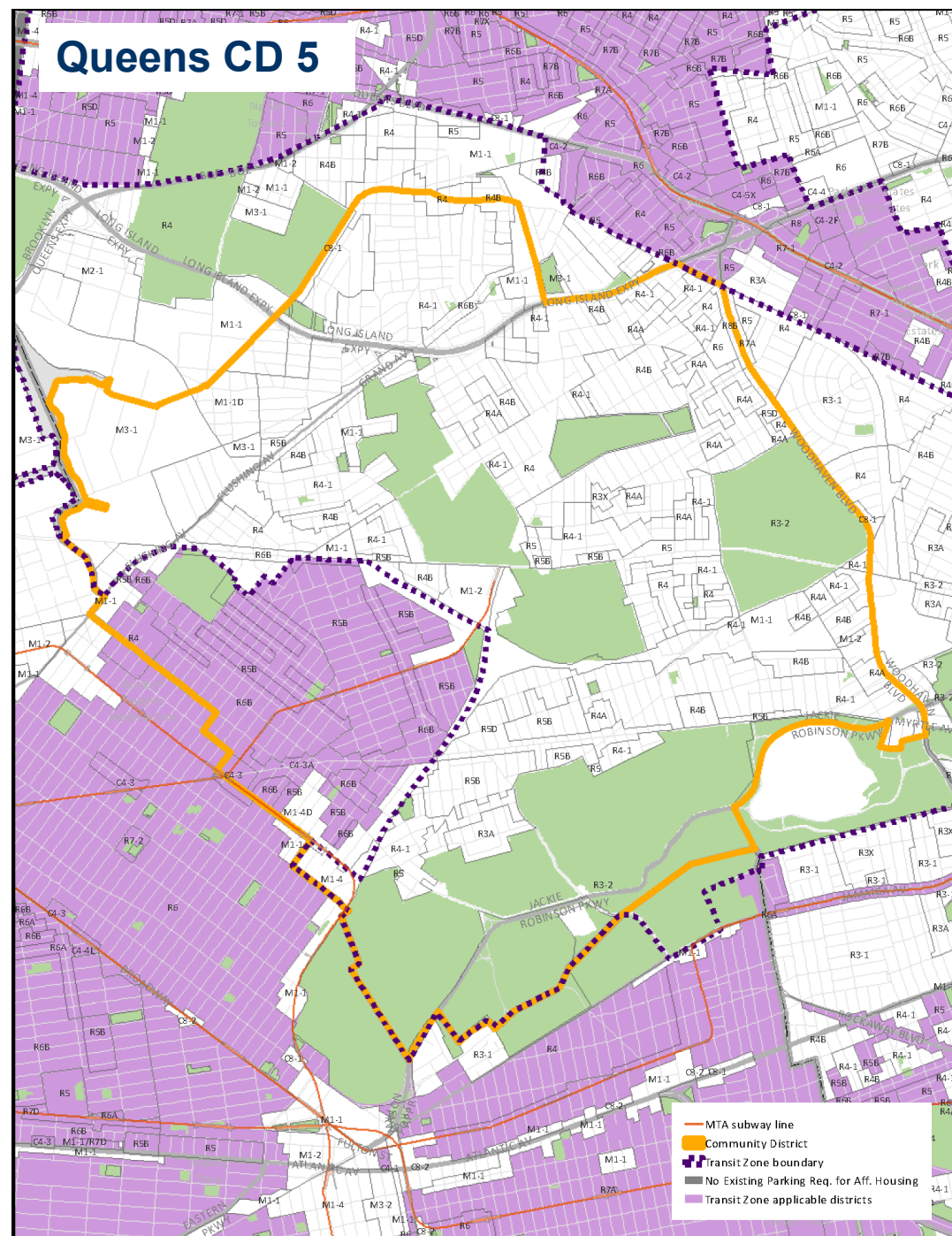
Transit Zone parking changes

PURPOSE: The cost of providing off-street parking can hamper the production of affordable housing. In transit-accessible neighborhoods, low-income households own many fewer cars, and often don't use the parking that has been provided. The proposal eliminates or reduces parking requirements for a range of affordable and senior housing units.

APPLICABILITY: Affordable and affordable senior housing in moderate and high density zoning districts where car-ownership is low.

Transit Zone: Off-street parking requirements

- Portions of Queens CD5 are located in the proposed Transit Zone.
- To encourage senior and affordable housing, unnecessary and costly parking requirements would be eliminated for new affordable and senior units in the Transit Zone shaded on the map.
- Outside the Transit Zone, parking requirements for new senior and affordable housing will be simplified and in some cases reduced.



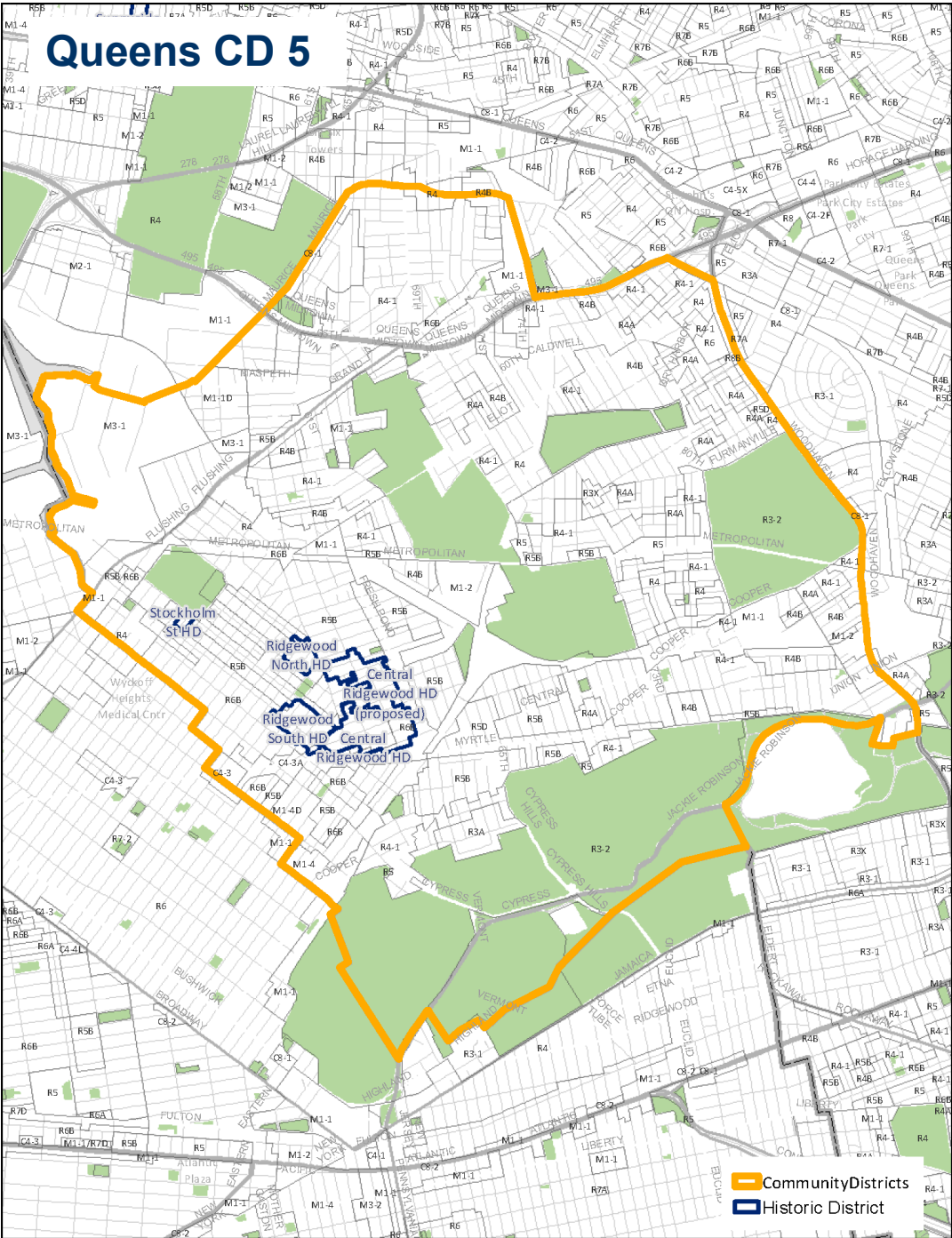
Other Reference Maps

For informational purposes we are providing reference maps for other areas in this Community District.

Special Areas

Historic Districts

- The proposal will not alter Landmark Preservation Commission (LPC) review of all modifications and new buildings in historic districts. No additional height would be permitted without public input and LPC approval.



Community Districts
Historic District