

# **Elevate Transit: Zoning for Accessibility**

## **Queens, Community District 4**

111 St (7)

103 St - Corona Plaza (7)

Junction Blvd (7)

90 St - Elmhurst Av (7)

82 St - Jackson Hts (7)

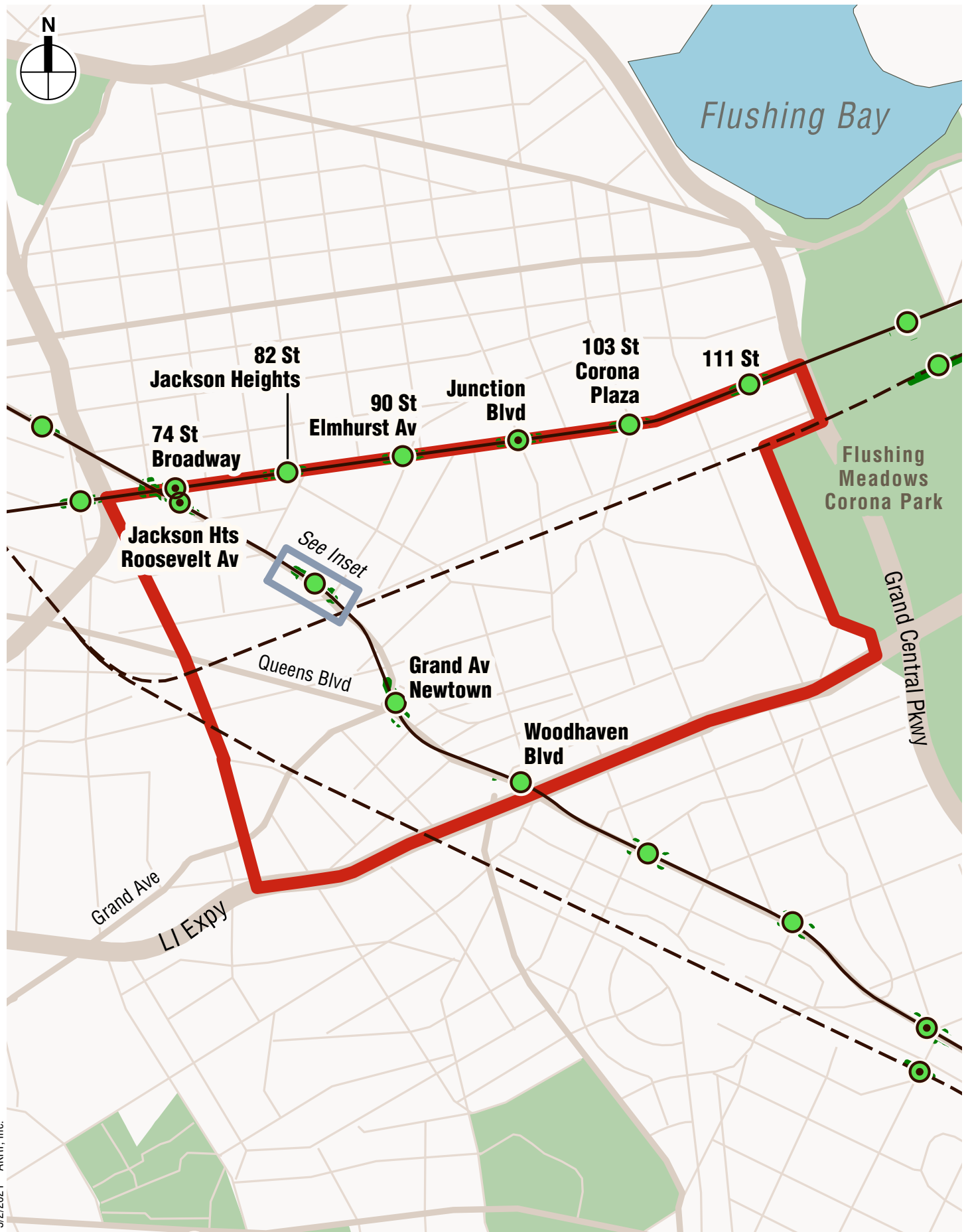
74 St - Broadway (7)

Woodhaven Blvd (M, R)

Grand Av - Newtown (M, R)

Elmhurst Av (M, R)

Jackson Hts - Roosevelt Av (E, F, M, R)



5/2/2021 - AKRF, Inc.

0 1,500 Feet

**Queens Community District 4**

- Queens Community District 4
- NYCT
- LIRR

**MTA Station Accessibility**

- Full ADA Access
- Partial ADA Access
- No ADA Access

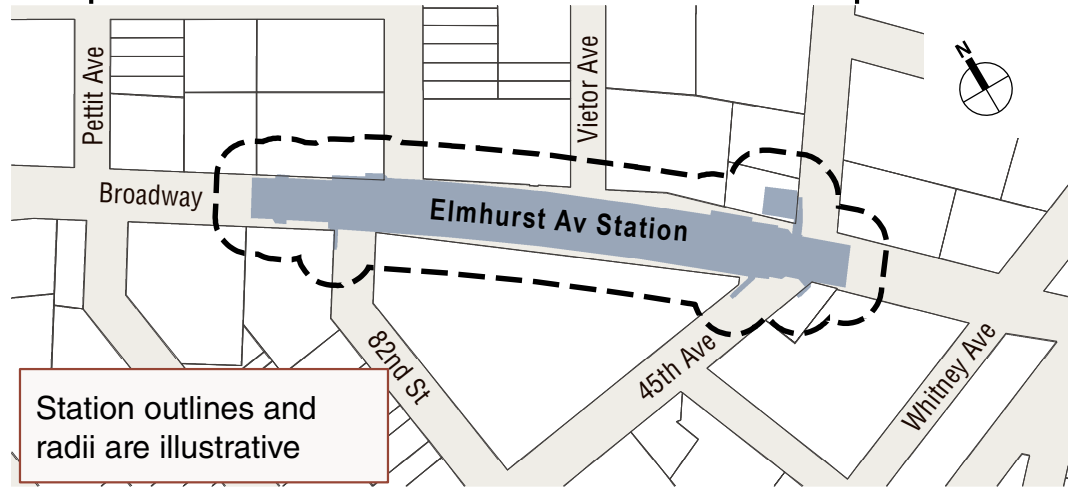
**Easement Stations**

- Proposed Easement Only Station

**Easement Areas**

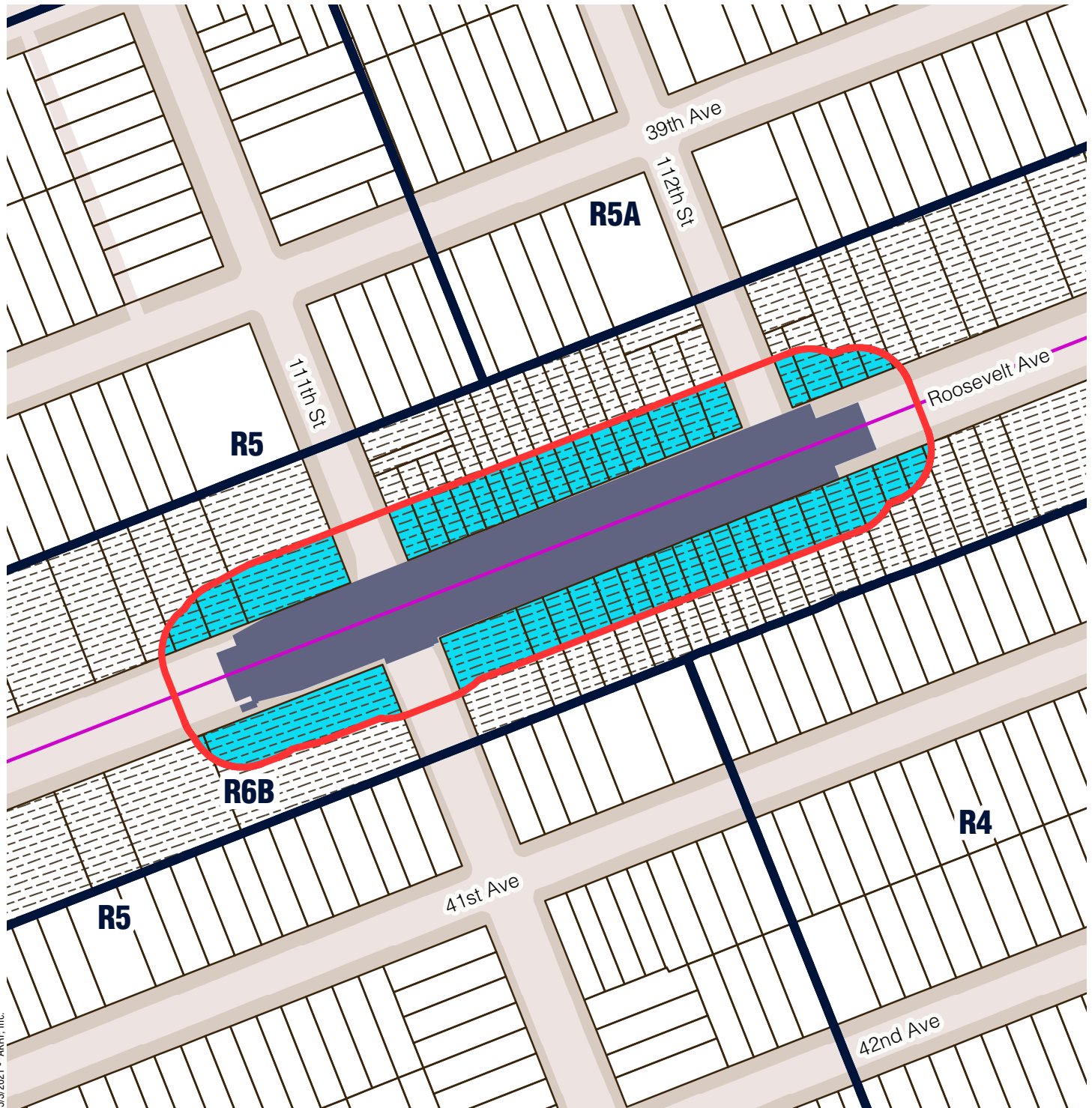
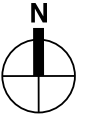
- 50' Area of Applicability

**Proposed 50-Foot Easement Area Example**






# Queens Community District 4




111 St (7)



5/3/2021 - AKRF, Inc.

-  Station Envelope
-  Zoning Districts
-  Commercial Overlay

## Proposed Easement Provisions

-  50-Foot Easement Area
-  Applicable Zoning District
-  Non-Applicable Zoning District

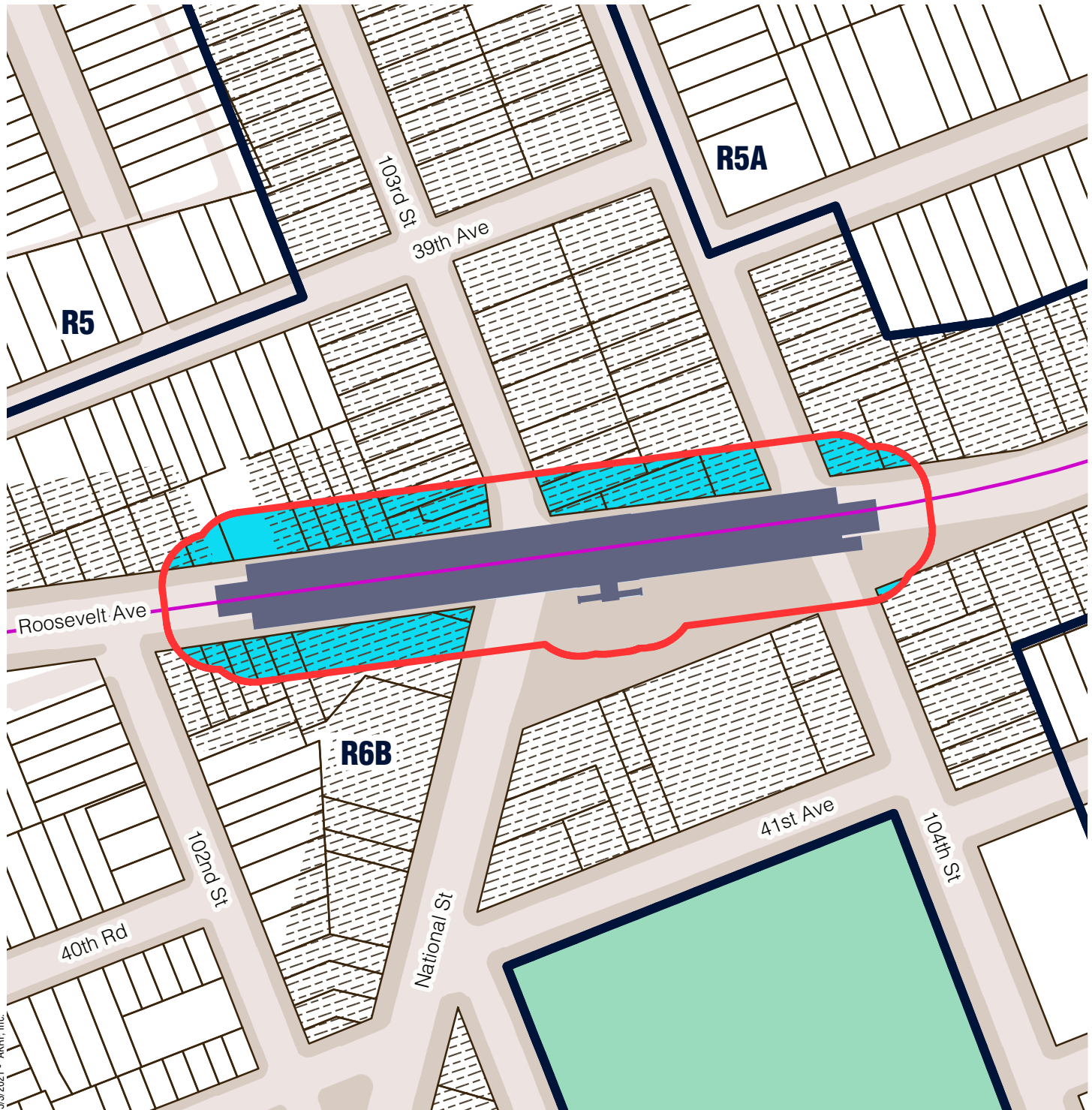
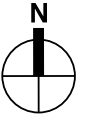
0 150 Feet

Sources/ Notes  
DCP, MapPLUTO/GIS Zoning  
Features MTA, GIS Station Areas

Station outline and area of  
applicability are approximate.

# Queens Community District 4

## 103 St - Corona Plaza (7)



5/3/2021 - AKRF, Inc.

- Station Envelope
- Zoning Districts
- Commerical Overlay
- Park

### Proposed Easement Provisions

- 50-Foot Easement Area
- Applicable Zoning District
- Non-Applicable Zoning District

0 150 Feet

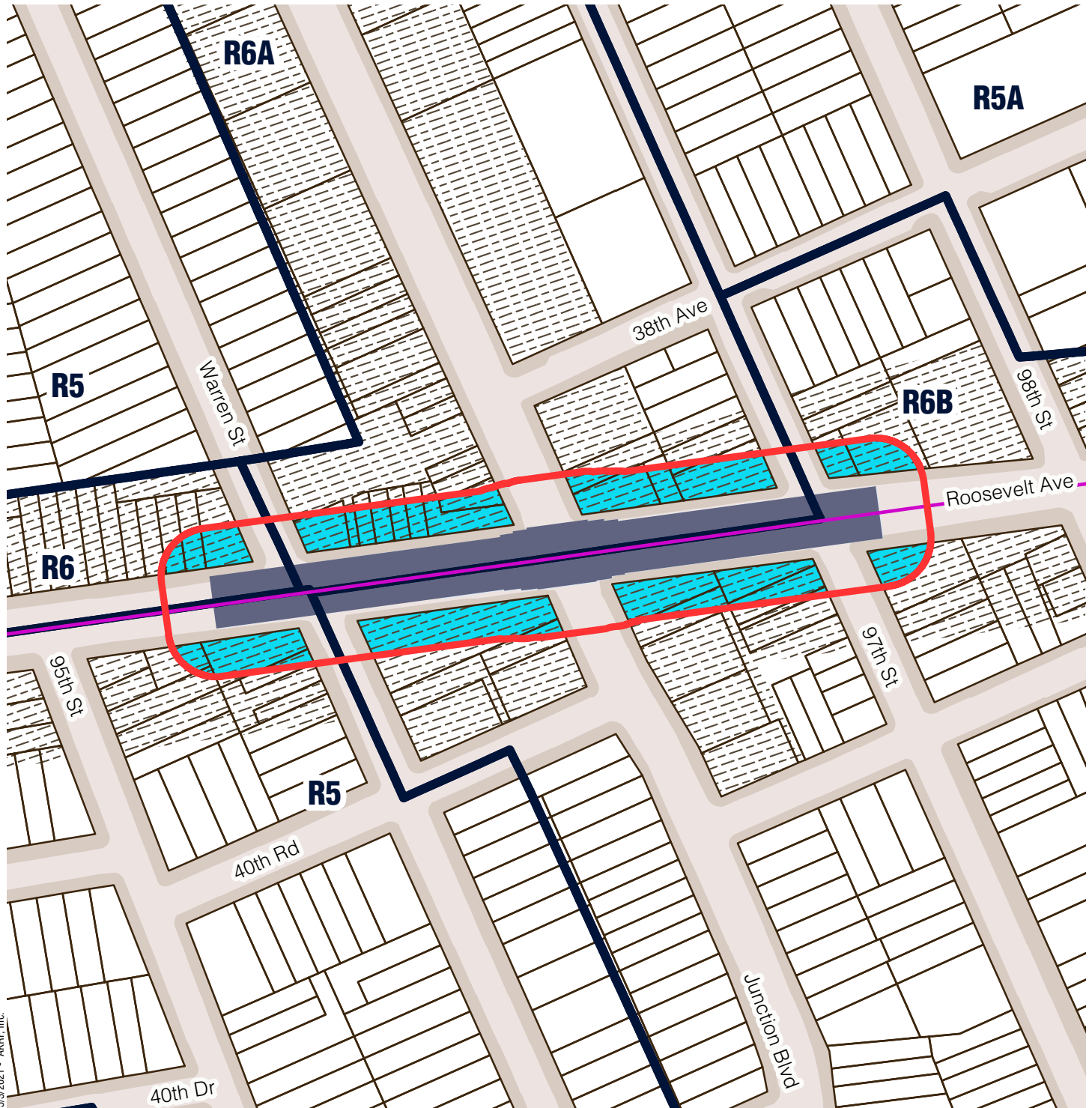
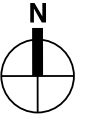
Sources/ Notes  
DCP, MapPLUTO/GIS Zoning  
Features MTA, GIS Station Areas

Station outline and area of  
applicability are approximate.






# Queens Community District 4




## Junction Blvd (7)



5/3/2021 - AKRF, Inc.

-  Station Envelope
-  Zoning Districts
-  Commercial Overlay

### Proposed Easement Provisions

-  50-Foot Easement Area
-  Applicable Zoning District
-  Non-Applicable Zoning District

0 200 Feet

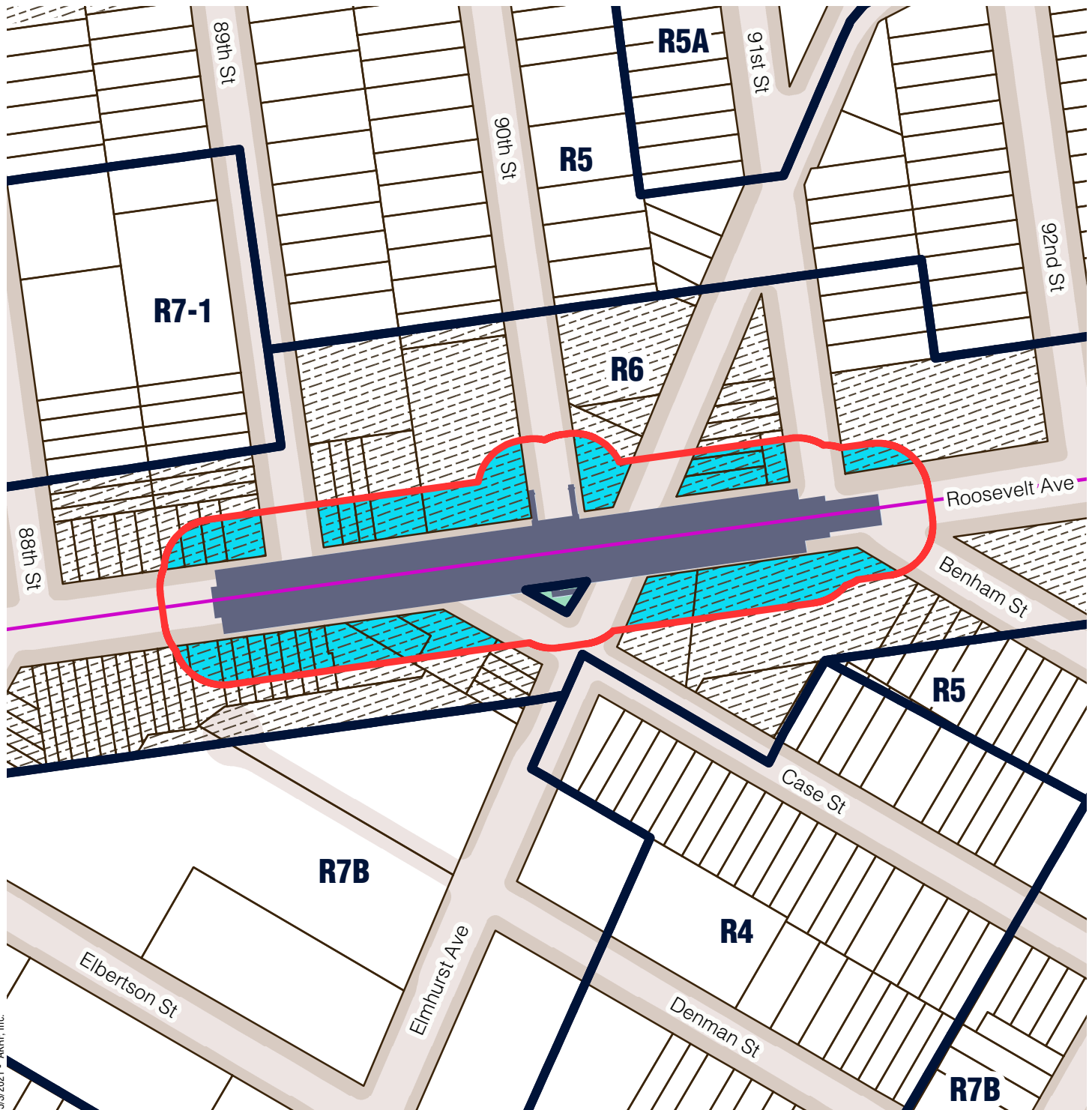
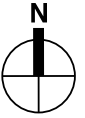


Sources/ Notes  
DCP, MapPLUTO/GIS Zoning  
Features MTA, GIS Station Areas




Station outline and area of  
applicability are approximate.

# Queens Community District 4




90 St - Elmhurst Av (7)




5/3/2021 - AKRF, Inc.

-  Station Envelope
-  Zoning Districts
-  Commerical Overlay
-  Park

## Proposed Easement Provisions

-  50-Foot Easement Area
-  Applicable Zoning District
-  Non-Applicable Zoning District

0 200 Feet

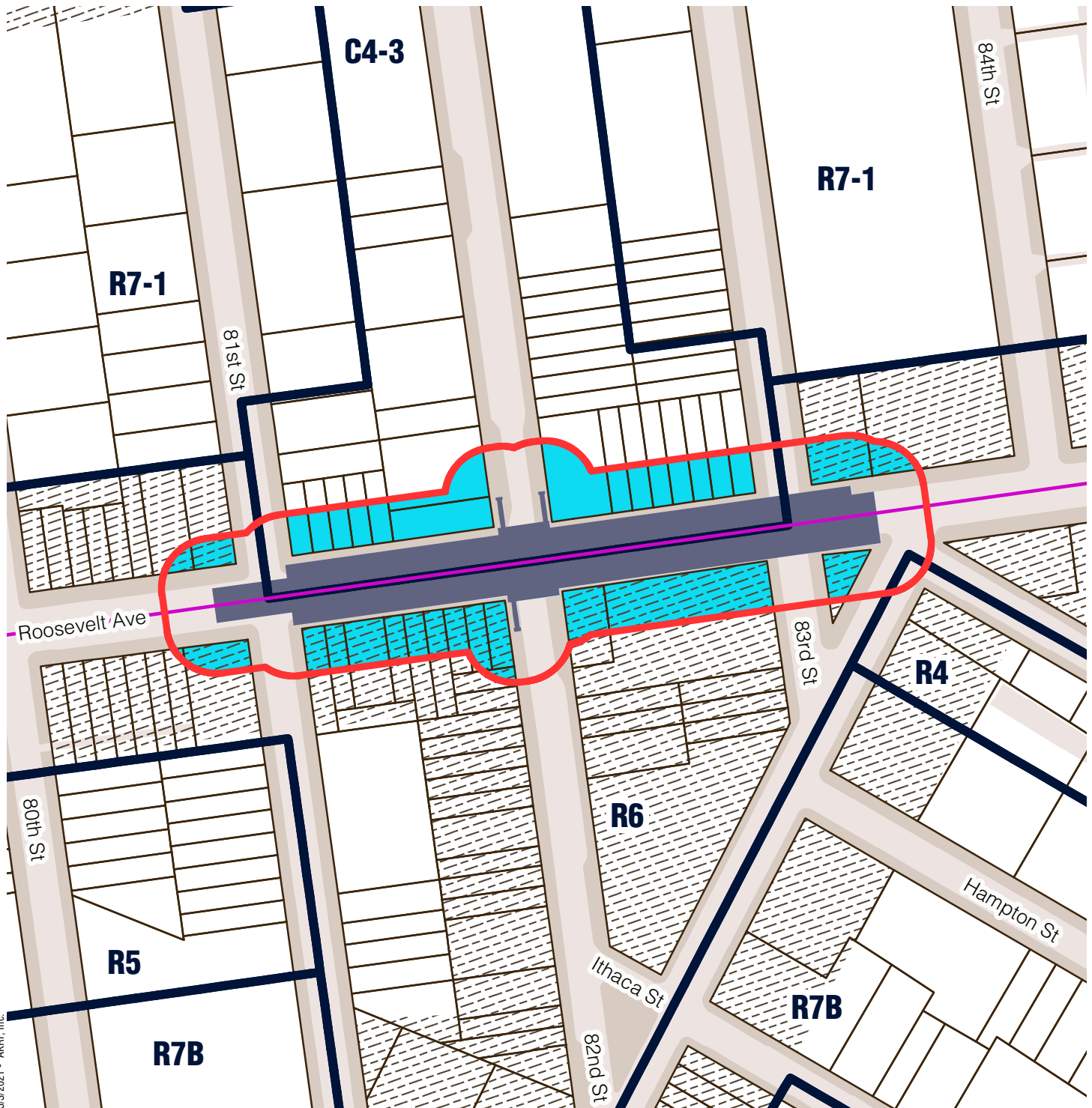
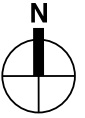


Sources/ Notes  
DCP, MapPLUTO/GIS Zoning  
Features MTA, GIS Station Areas

Station outline and area of  
applicability are approximate.

# Queens Community District 4

82 St - Jackson Hts (7)



- Station Envelope
- Zoning Districts
- Commerical Overlay

## Proposed Easement Provisions

- 50-Foot Easement Area
- Applicable Zoning District
- Non-Applicable Zoning District

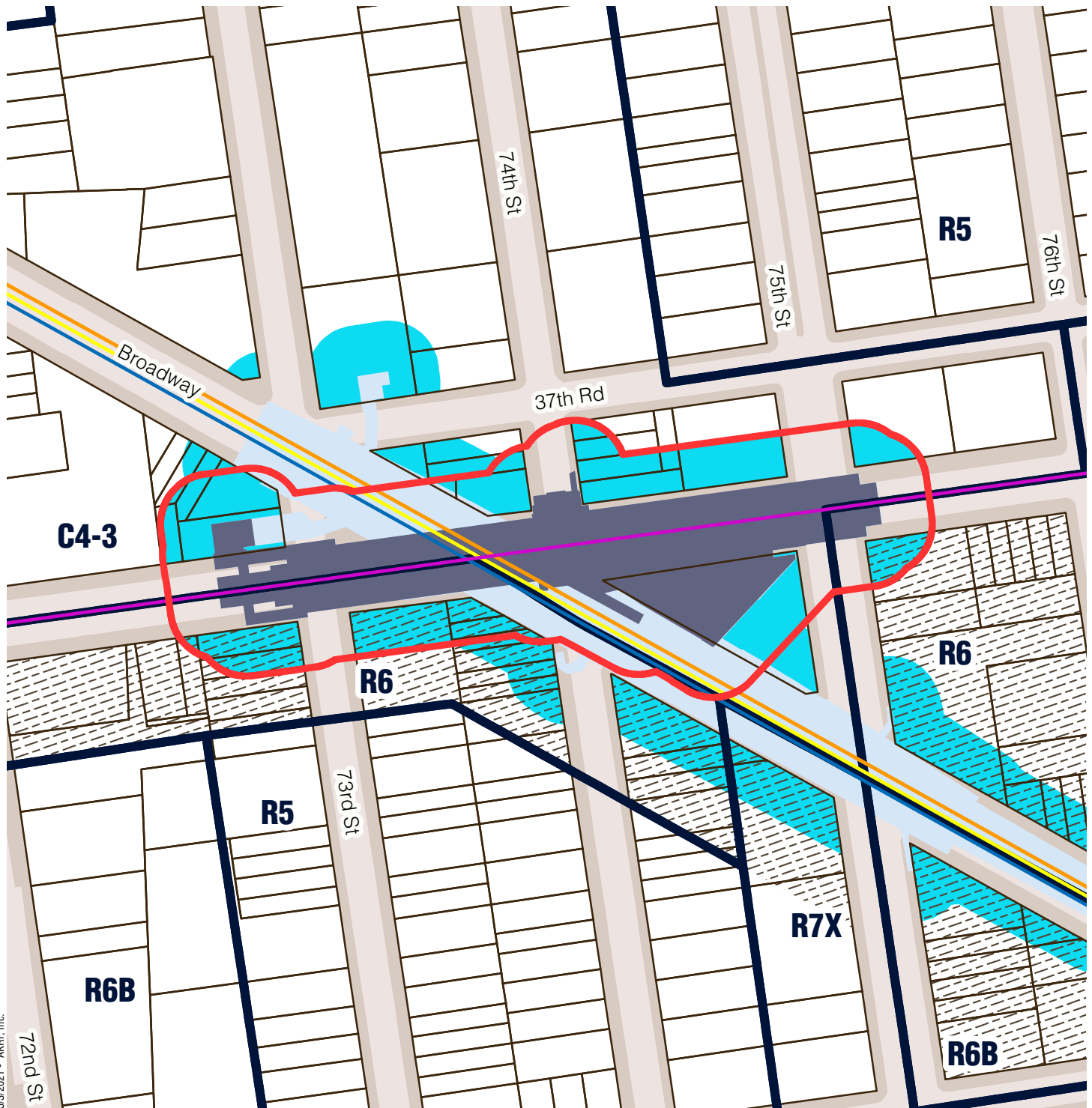
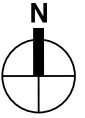
0 200 Feet

Sources/ Notes  
DCP, MapPLUTO/GIS Zoning  
Features MTA, GIS Station Areas




Station outline and area of  
applicability are approximate.

# Queens Community District 4




74 St - Broadway (7)




5/3/2021 - AKRF, Inc.

-  Station Envelope
-  Zoning Districts
-  Commercial Overlay

## Proposed Easement Provisions

-  50-Foot Easement Area
-  Applicable Zoning District
-  Non-Applicable Zoning District

0 200 Feet



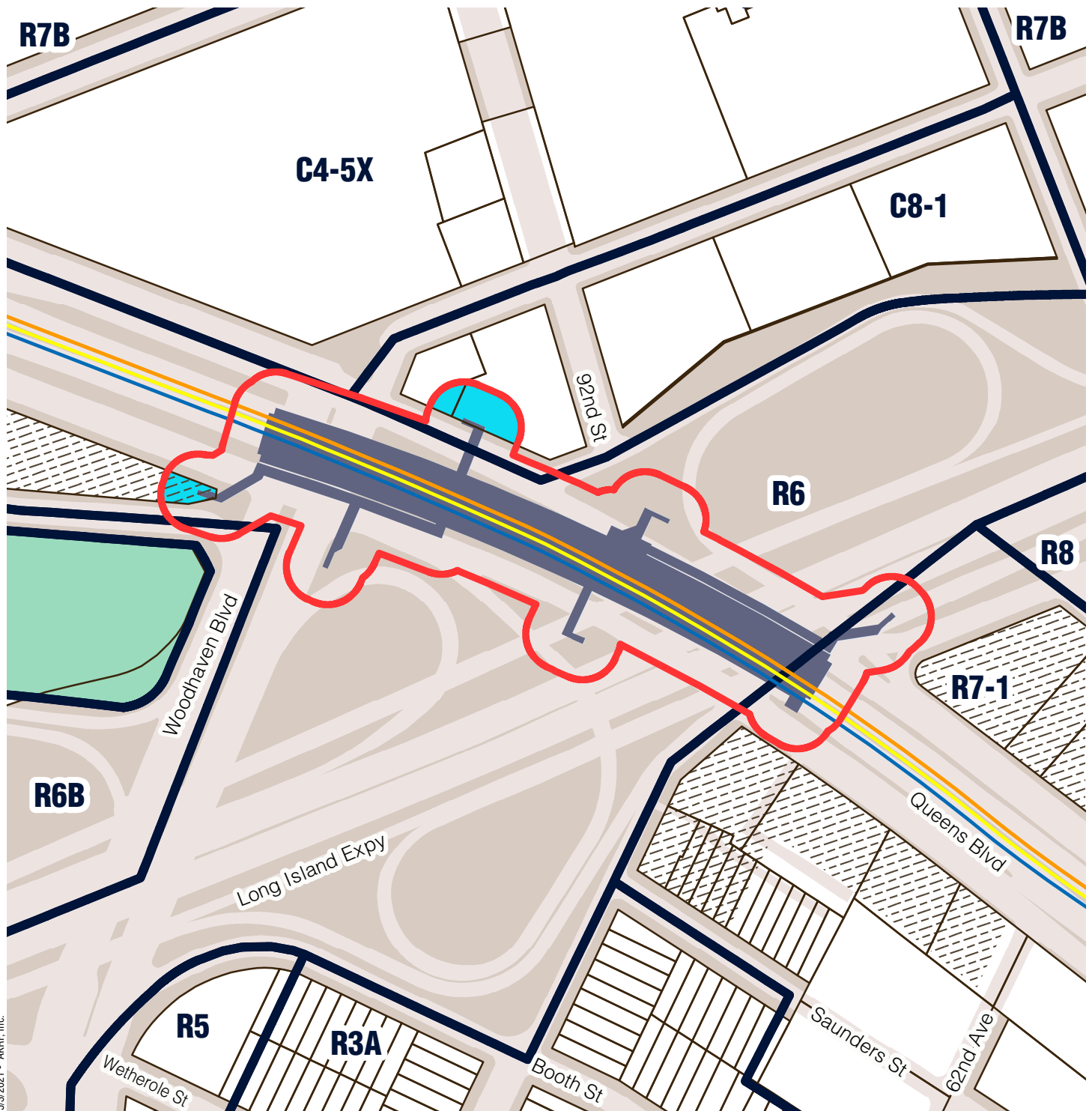
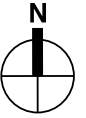
Sources/ Notes  
DCP, MapPLUTO/GIS Zoning  
Features MTA, GIS Station Areas

Station outline and area of  
applicability are approximate.






# Queens Community District 4




Woodhaven Blvd (M, R)




5/3/2021 - AKRF, Inc.

-  Station Envelope
-  Zoning Districts
-  Commerical Overlay
-  Park

## Proposed Easement Provisions

-  50-Foot Easement Area
-  Applicable Zoning District
-  Non-Applicable Zoning District

0 250 Feet

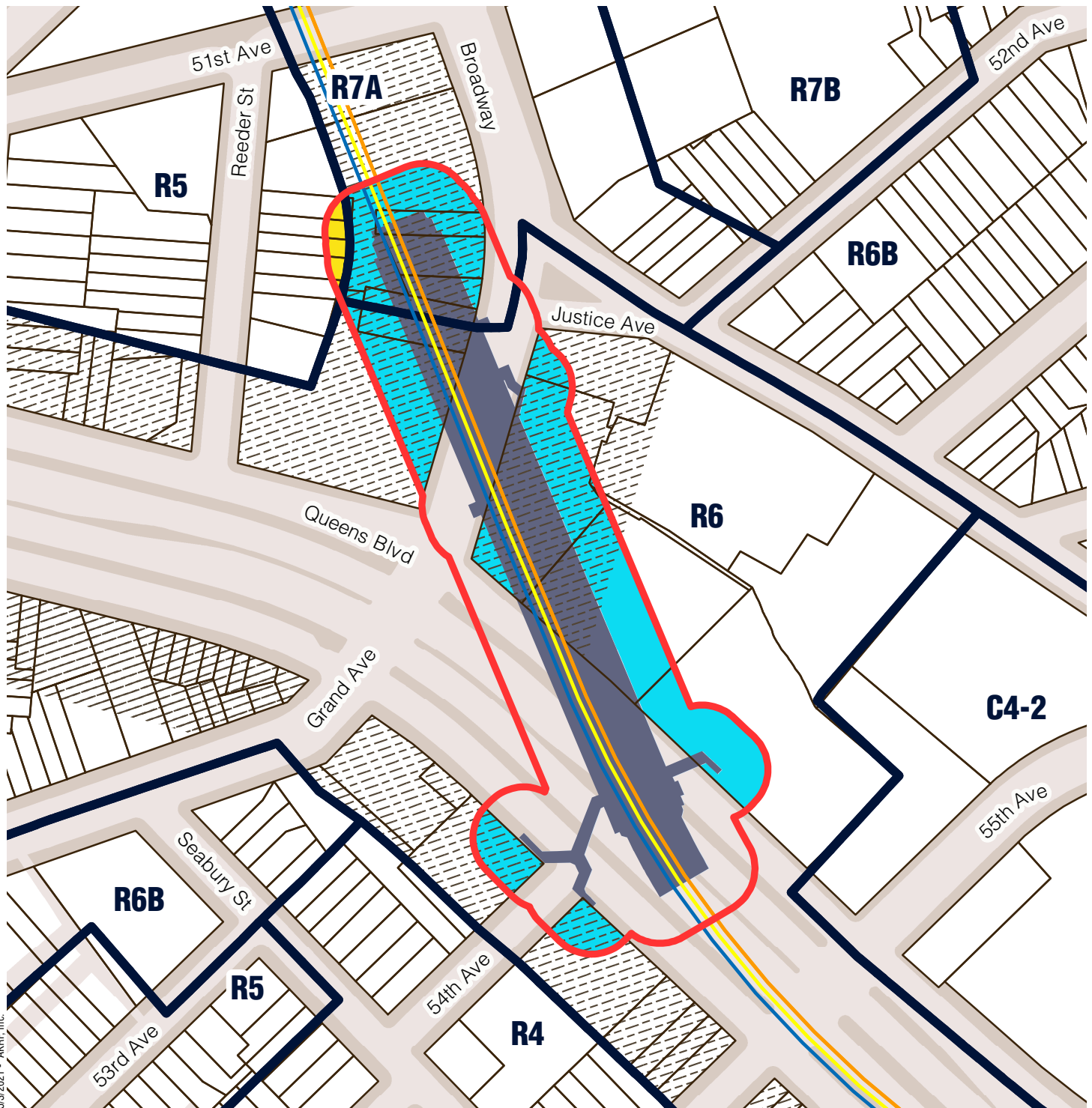
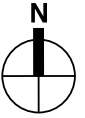


Sources/ Notes  
DCP, MapPLUTO/GIS Zoning  
Features MTA, GIS Station Areas




Station outline and area of  
applicability are approximate.

# Queens Community District 4




Grand Av - Newtown (M, R)



5/3/2021 - AKRF, Inc.

-  Station Envelope
-  Zoning Districts
-  Commerical Overlay

## Proposed Easement Provisions

-  50-Foot Easement Area
-  Applicable Zoning District
-  Non-Applicable Zoning District

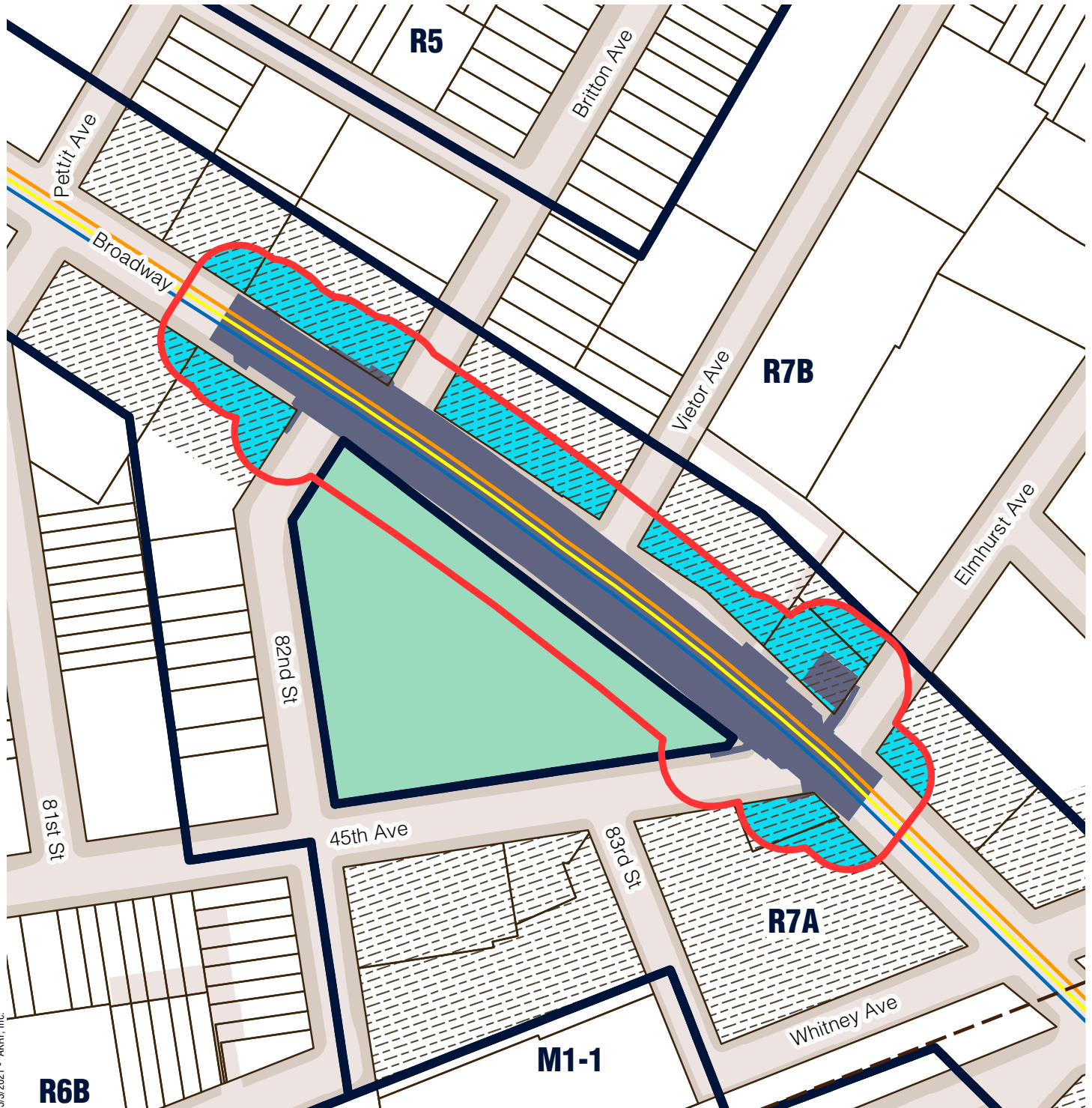
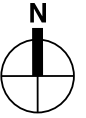
0 200 Feet

Sources/ Notes  
DCP, MapPLUTO/GIS Zoning  
Features MTA, GIS Station Areas




Station outline and area of  
applicability are approximate.

# Queens Community District 4




Elmhurst Av (M, R)



5/3/2021 - AKRF, Inc.

-  Station Envelope
-  Zoning Districts
-  Commerical Overlay
-  Park

## Proposed Easement Provisions

-  50-Foot Easement Area
-  Applicable Zoning District
-  Non-Applicable Zoning District

0 200 Feet

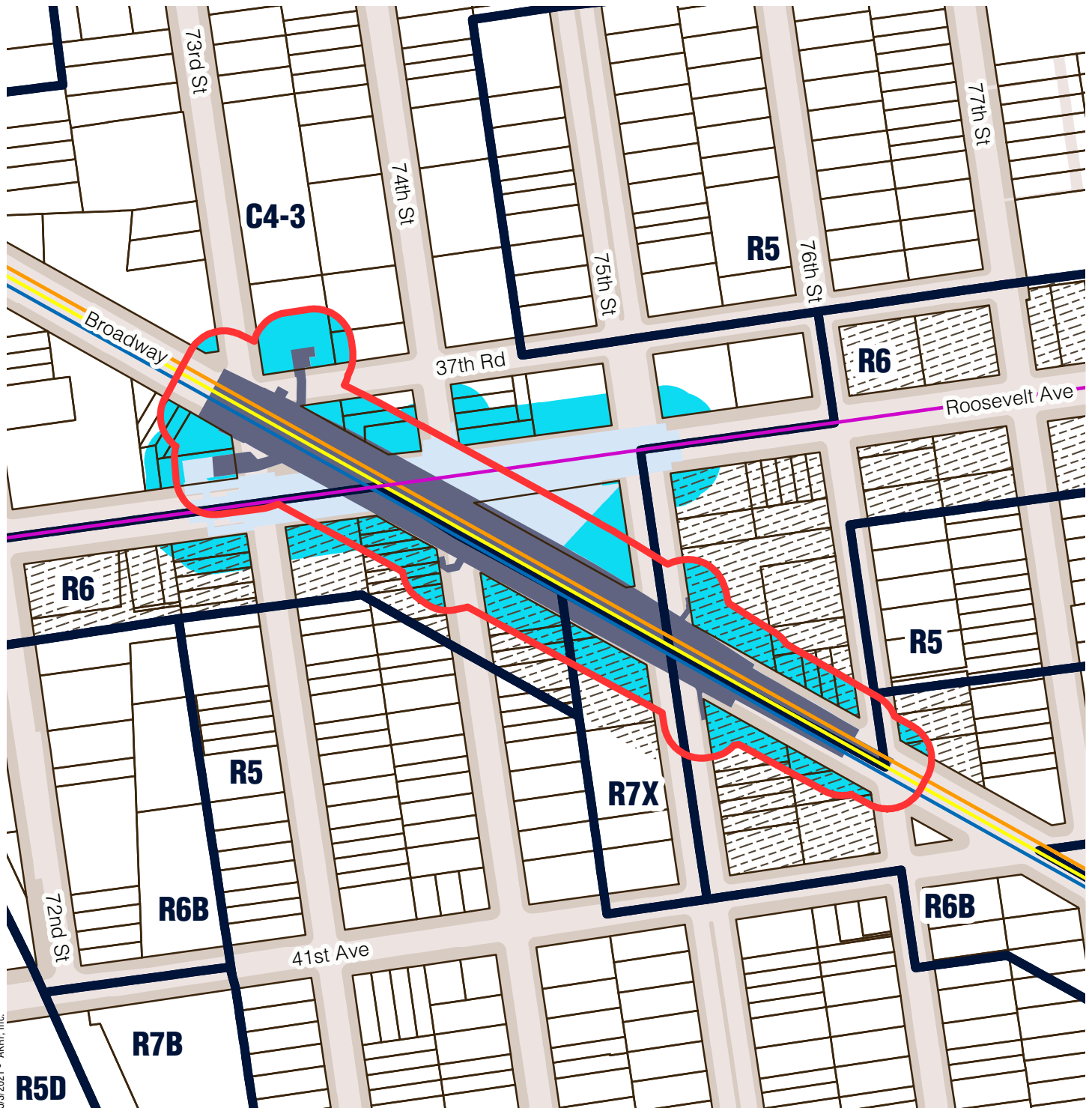
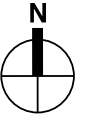
Sources/ Notes  
DCP, MapPLUTO/GIS Zoning  
Features MTA, GIS Station Areas

Station outline and area of  
applicability are approximate.



# Queens Community District 4

## Jackson Hts - Roosevelt Av (E, F, M, R)



5/3/2021 - AKRF, Inc.

- Station Envelope
- Zoning Districts
- Commerical Overlay

### Proposed Easement Provisions

- 50-Foot Easement Area
- Applicable Zoning District
- Non-Applicable Zoning District

0 250 Feet

Sources/ Notes  
DCP, MapPLUTO/GIS Zoning  
Features MTA, GIS Station Areas

Station outline and area of  
applicability are approximate.