

# **Elevate Transit: Zoning for Accessibility**

## **Brooklyn, Community District 5**

Broadway Junction (J, Z)

New Lots Av (3)

Alabama Av (J, Z)

East New York (LIRR)

Van Siclen Av (J, Z)

Cleveland St (J)

Norwood Av (J, Z)

Crescent St (J, Z)

Cypress Hills (J)

75 St - Elderts Ln (J, Z)

Liberty Av (C)

Van Siclen Av (C)

Shepherd Av (C)

Euclid Av (A, C)

Grant Av (A)

Broadway Junction (L)

Atlantic Av (L)

Sutter Av (L)

Livonia Av (L)

New Lots Av (L)

Pennsylvania Av (3)

Van Siclen Av (3)



Brooklyn Community District 5

NYCT

LIRR

### MTA Station Accessibility

- Full ADA Access
- Partial ADA Access
- No ADA Access

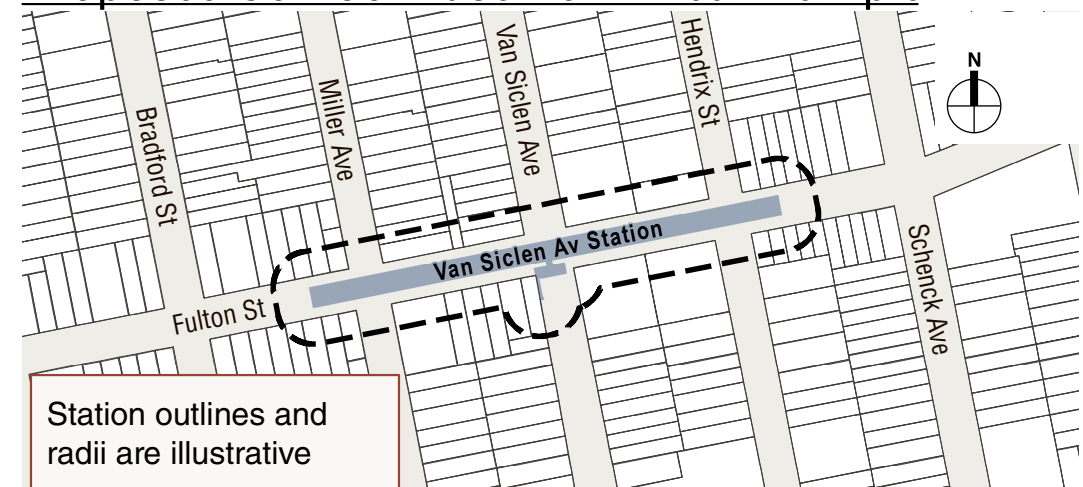
### Easement Stations

- Proposed Easement Only Station

### Easement Areas

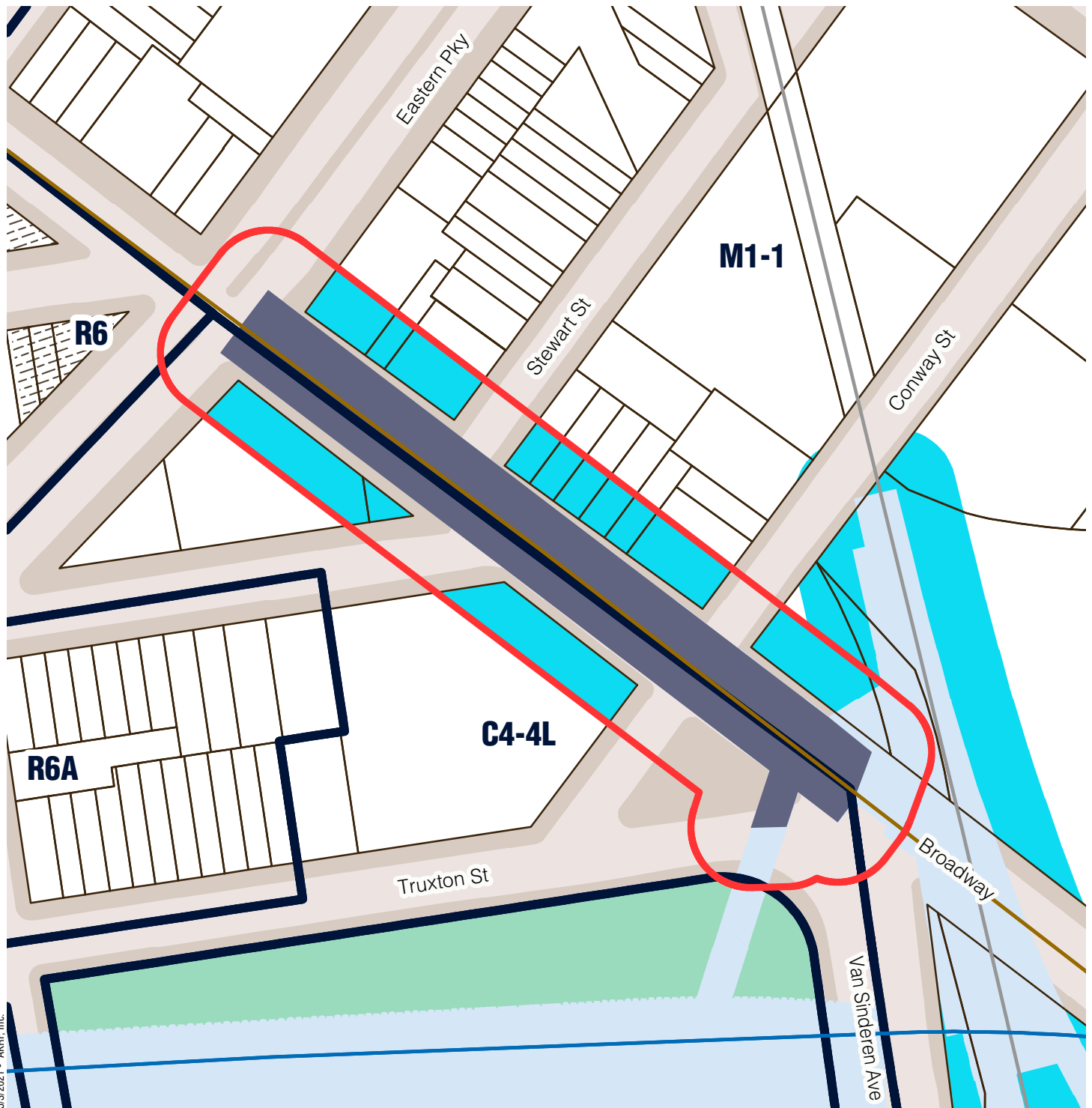
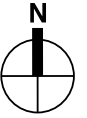
- 50' Area of Applicability

### Proposed 50-Foot Easement Area Example





# Brooklyn Community District 5




## Broadway Junction (J, Z)



5/3/2021 - AKRF, Inc.

-  Station Envelope
-  Zoning Districts
-  Commerical Overlay
-  Park

### Proposed Easement Provisions

-  50-Foot Easement Area
-  Applicable Zoning District
-  Non-Applicable Zoning District

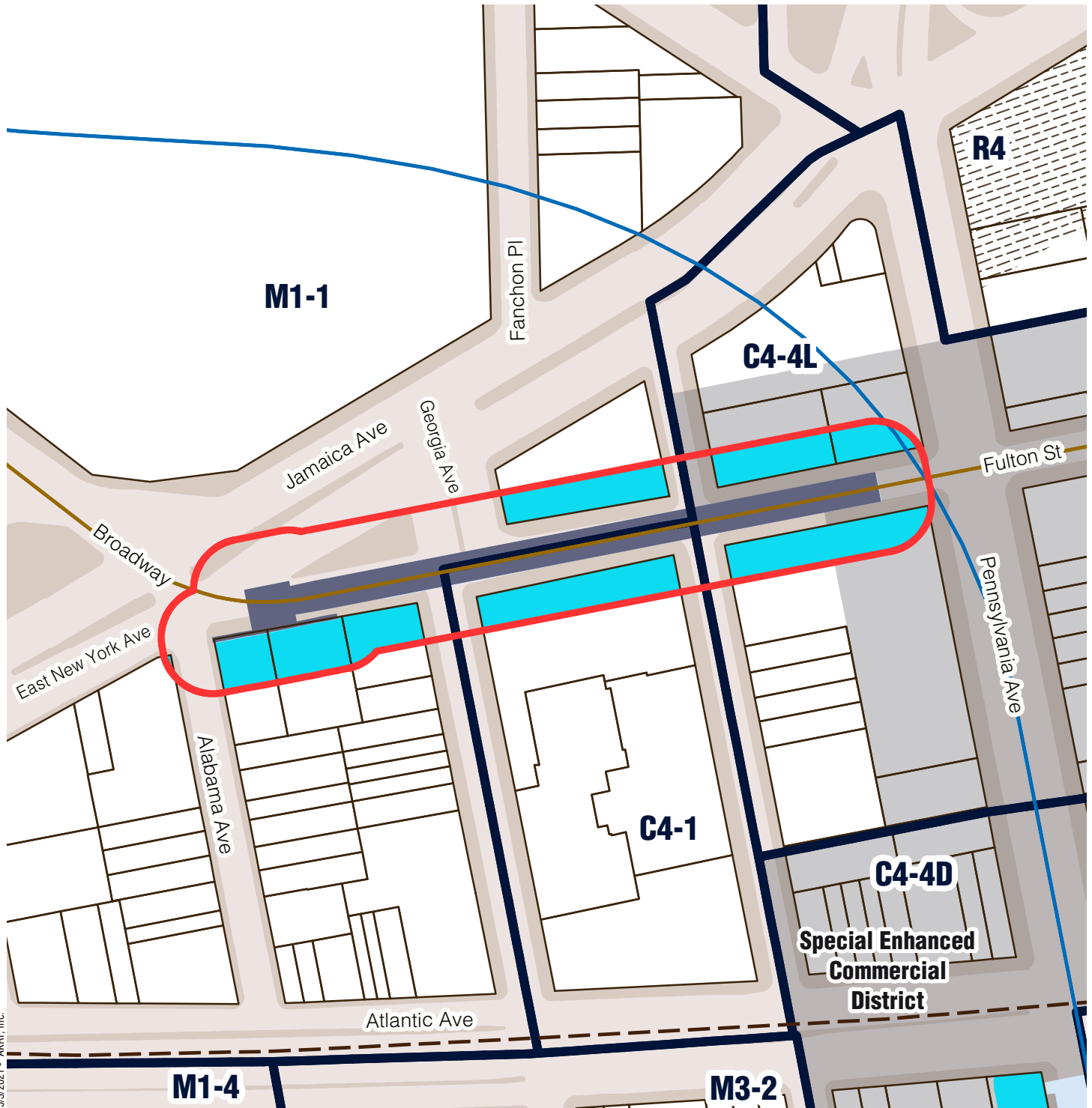
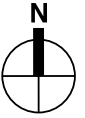
0 150 Feet

Sources/ Notes  
DCP, MapPLUTO/GIS Zoning  
Features MTA, GIS Station Areas

Station outline and area of  
applicability are approximate.

# Brooklyn Community District 5




Alabama Av (J, Z)



5/3/2021 - AKRF, Inc.

-  Station Envelope
-  Zoning Districts
-  Commercial Overlay
-  Special District

## Proposed Easement Provisions

-  50-Foot Easement Area
-  Applicable Zoning District
-  Non-Applicable Zoning District

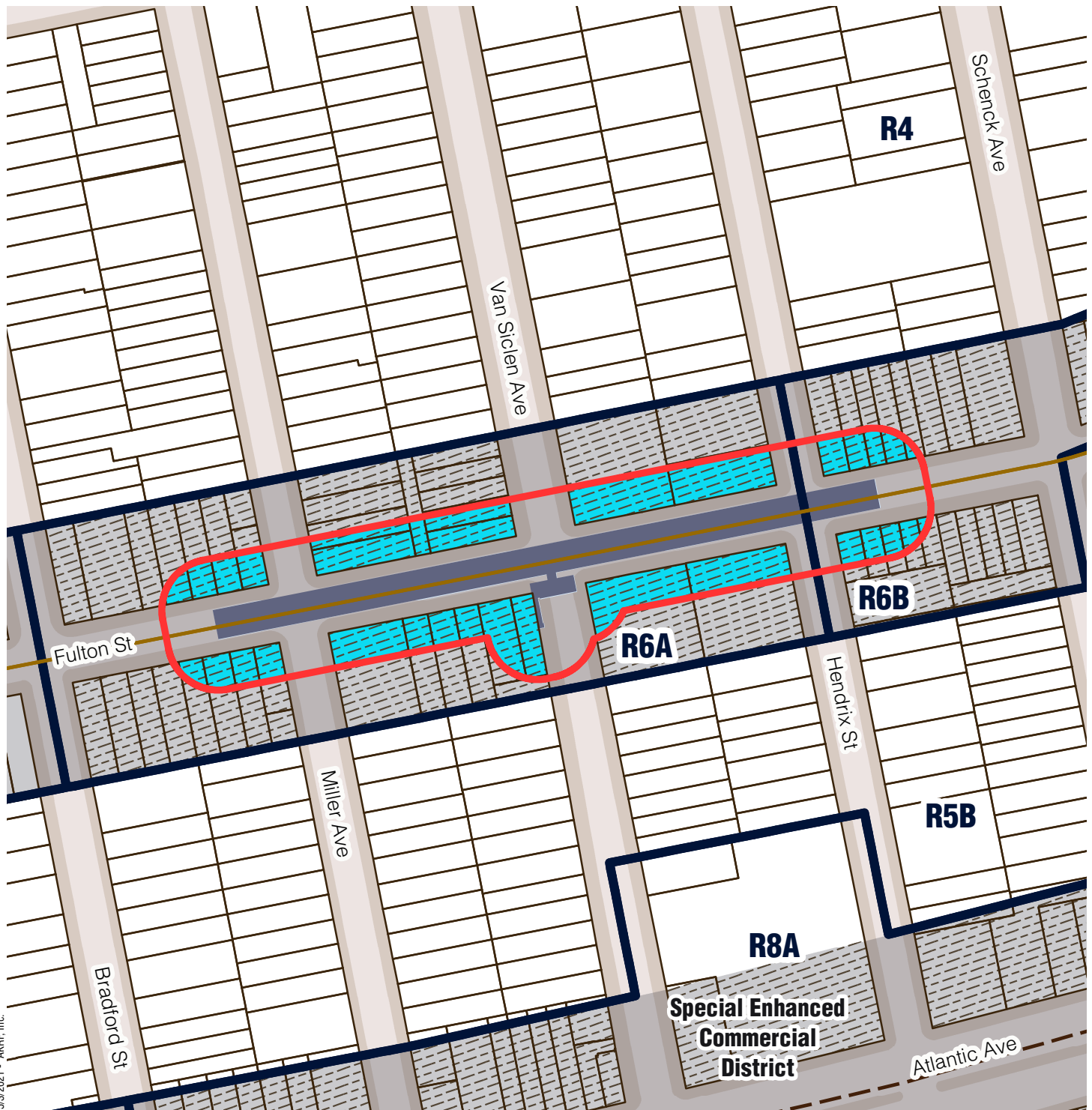
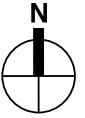
0 200 Feet

Sources/ Notes  
DCP, MapPLUTO/GIS Zoning  
Features MTA, GIS Station Areas

Station outline and area of  
applicability are approximate.

# Brooklyn Community District 5




Van Siclen Av (J, Z)




5/3/2021 - AKRF, Inc.

-  Station Envelope
-  Zoning Districts
-  Commercial Overlay
-  Special District

## Proposed Easement Provisions

-  50-Foot Easement Area
-  Applicable Zoning District
-  Non-Applicable Zoning District

0 200 Feet

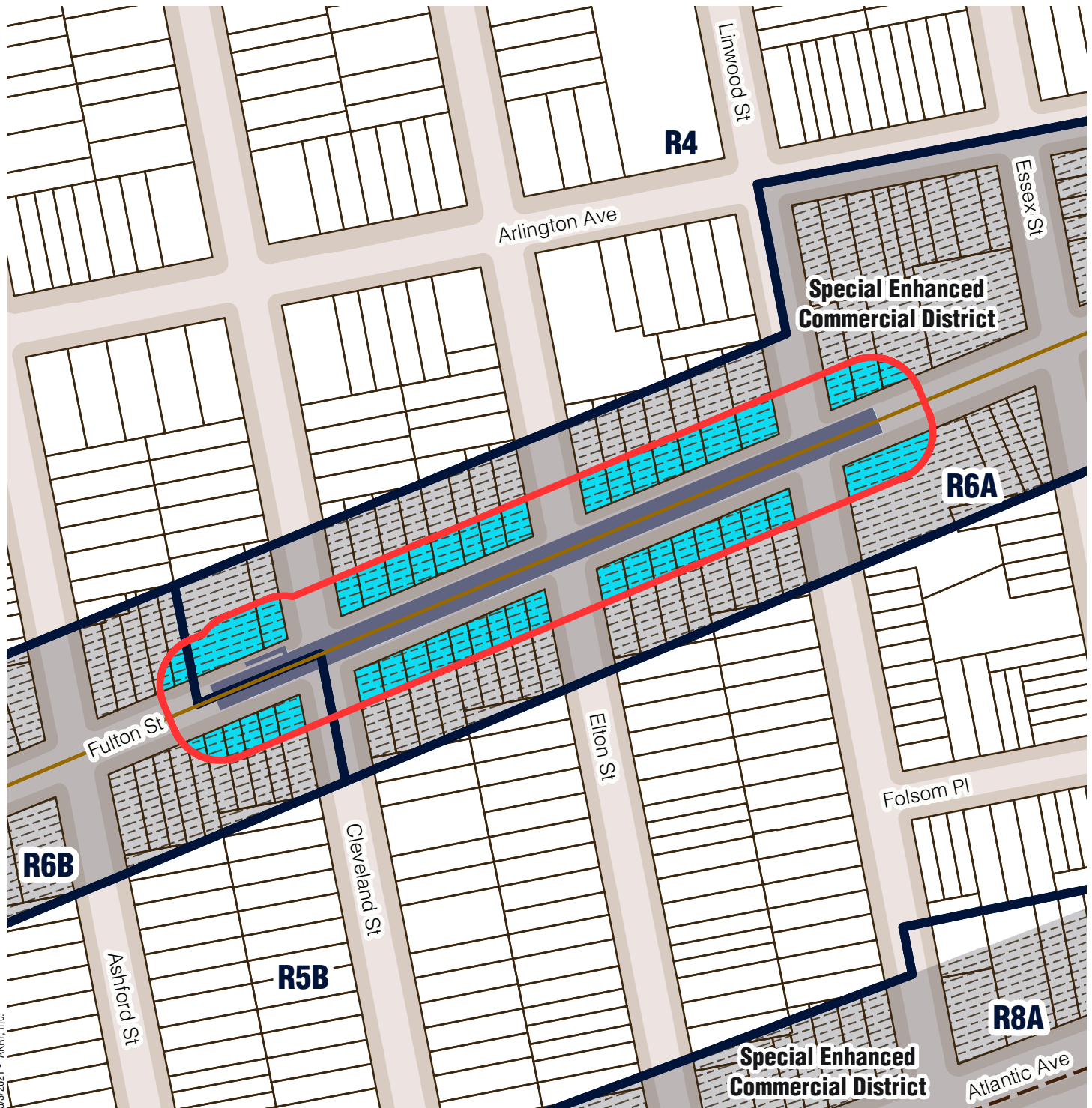
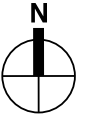


Sources/ Notes  
DCP, MapPLUTO/GIS Zoning  
Features MTA, GIS Station Areas

Station outline and area of  
applicability are approximate.

# Brooklyn Community District 5




Cleveland St (J)



5/3/2021 - AKRF, Inc.

-  Station Envelope
-  Zoning Districts
-  Commerical Overlay
-  Special District

## Proposed Easement Provisions

-  50-Foot Easement Area
-  Applicable Zoning District
-  Non-Applicable Zoning District

0 200 Feet

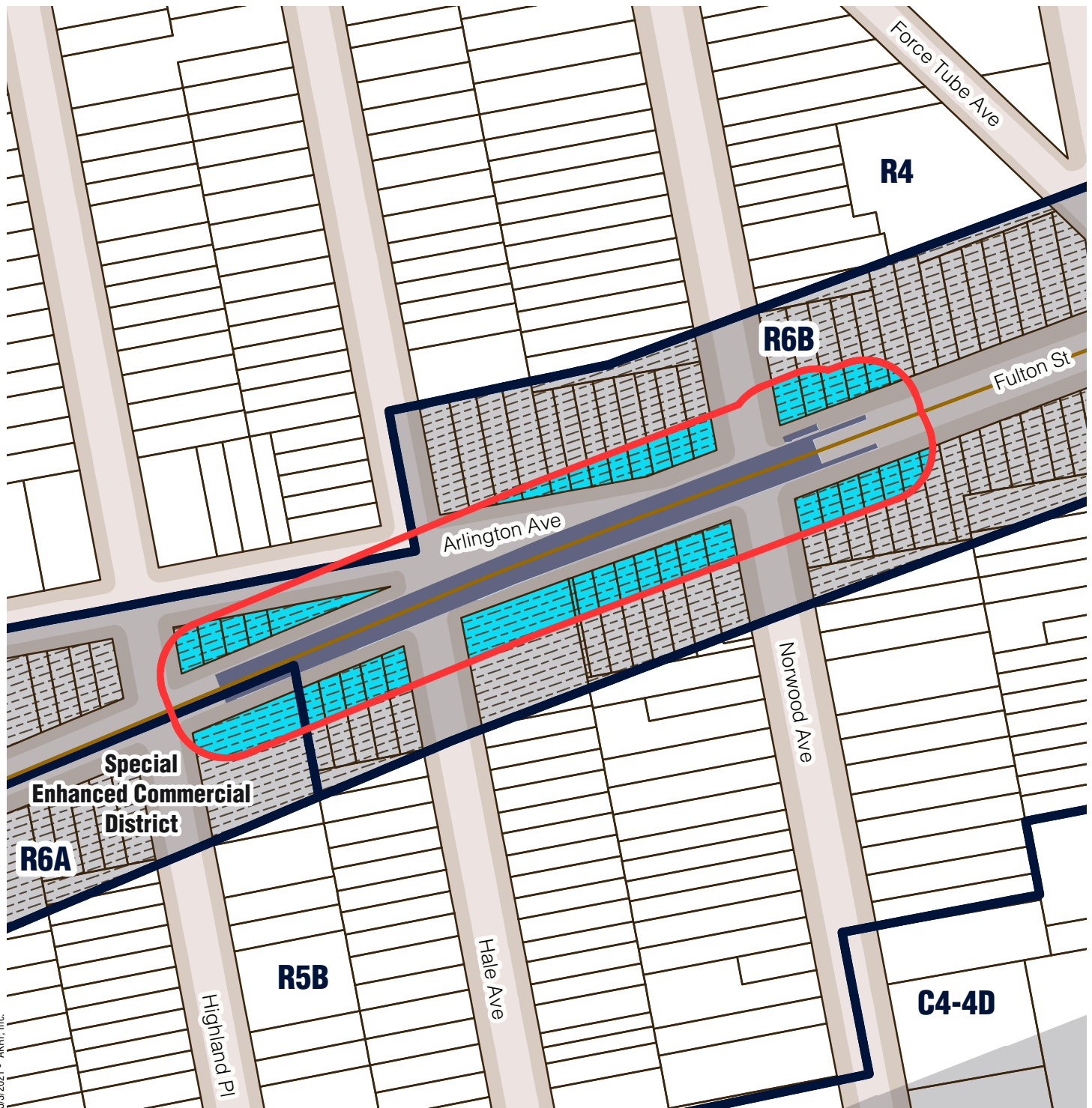
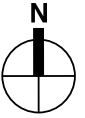


Sources/ Notes  
DCP, MapPLUTO/GIS Zoning  
Features MTA, GIS Station Areas

Station outline and area of  
applicability are approximate.

# Brooklyn Community District 5

Norwood Av (J, Z)



5/3/2021 - AKRF, Inc.

- Station Envelope
- Zoning Districts
- Commercial Overlay
- Special District

## Proposed Easement Provisions

- 50-Foot Easement Area
- Applicable Zoning District
- Non-Applicable Zoning District

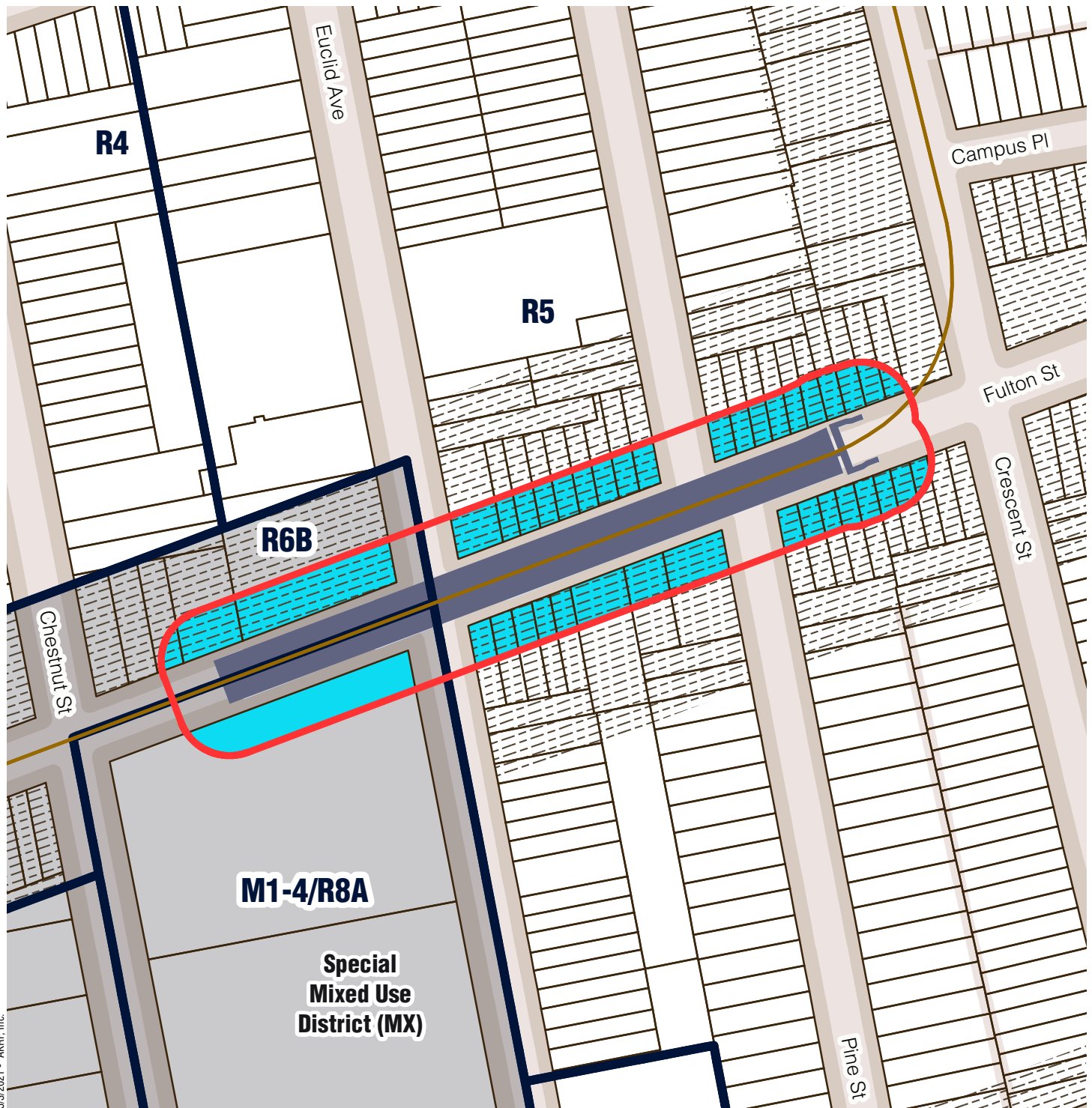
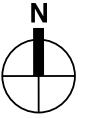
0 150 Feet

Sources/ Notes  
DCP, MapPLUTO/GIS Zoning  
Features MTA, GIS Station Areas

Station outline and area of  
applicability are approximate.

# Brooklyn Community District 5

Crescent St (J, Z)



5/3/2021 - AKRF, Inc.

- Station Envelope
- Zoning Districts
- Commercial Overlay
- Special District

## Proposed Easement Provisions

- 50-Foot Easement Area
- Applicable Zoning District
- Non-Applicable Zoning District

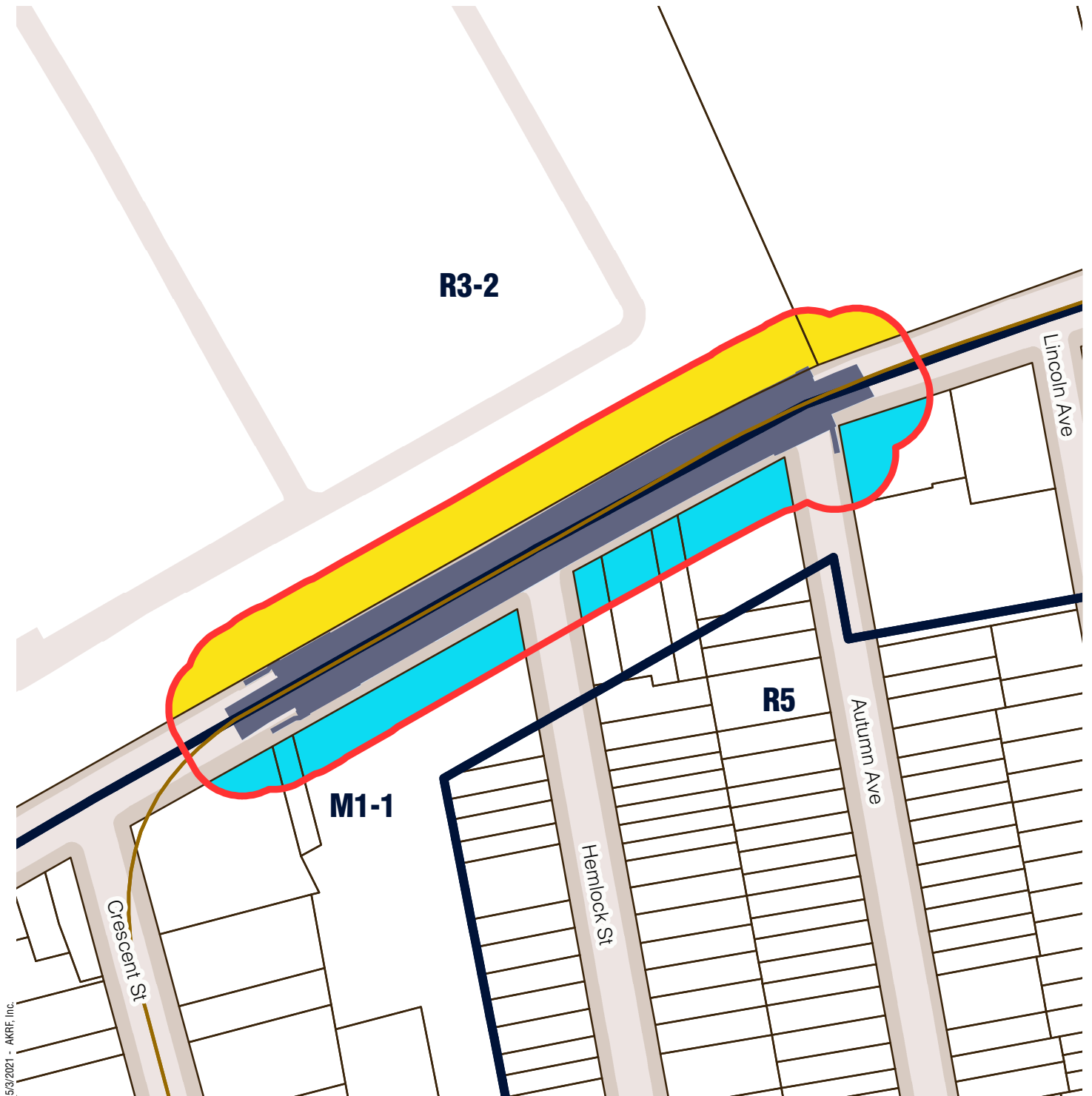
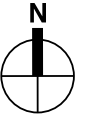
0 150 Feet

Sources/ Notes  
DCP, MapPLUTO/GIS Zoning  
Features MTA, GIS Station Areas

Station outline and area of  
applicability are approximate.

# Brooklyn Community District 5

## Cypress Hills (J)



5/3/2021 - AKRF, Inc.

- Station Envelope
- Zoning Districts

### Proposed Easement Provisions

- 50-Foot Easement Area
- Applicable Zoning District
- Non-Applicable Zoning District

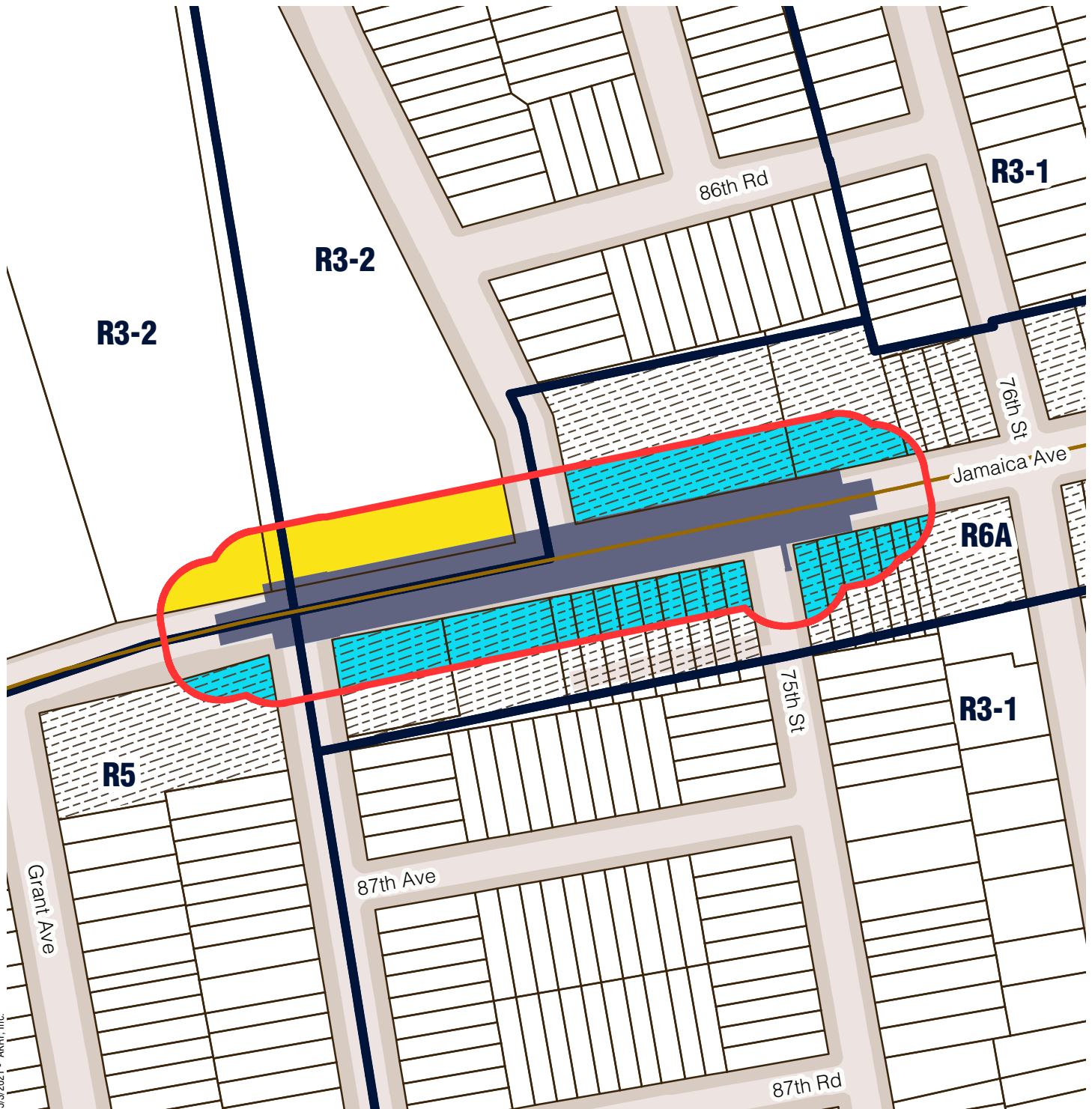
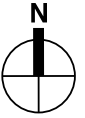
0 150 Feet

Sources/ Notes  
DCP, MapPLUTO/GIS Zoning  
Features MTA, GIS Station Areas




Station outline and area of  
applicability are approximate.

# Brooklyn Community District 5




75 St - Elderts Ln (J, Z)




5/3/2021 - AKRF, Inc.

-  Station Envelope
-  Zoning Districts
-  Commercial Overlay

## Proposed Easement Provisions

-  50-Foot Easement Area
-  Applicable Zoning District
-  Non-Applicable Zoning District

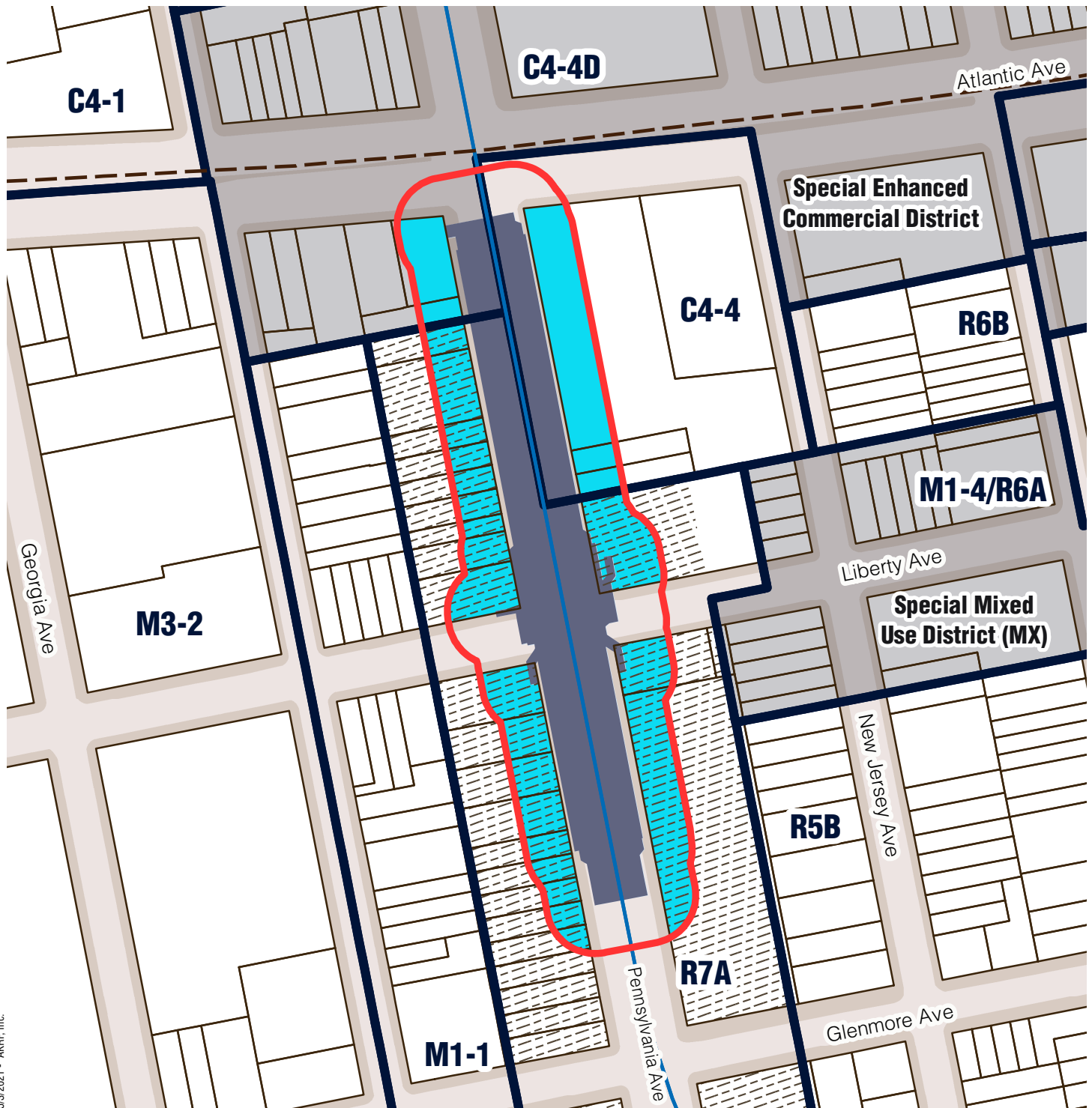
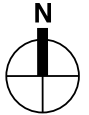
0 150 Feet  


Sources/ Notes  
DCP, MapPLUTO/GIS Zoning  
Features MTA, GIS Station Areas

Station outline and area of  
applicability are approximate.

# Brooklyn Community District 5




Liberty Av (C)



5/3/2021 - AKRF, Inc.

-  Station Envelope
-  Zoning Districts
-  Commercial Overlay
-  Special District

## Proposed Easement Provisions

-  50-Foot Easement Area
-  Applicable Zoning District
-  Non-Applicable Zoning District

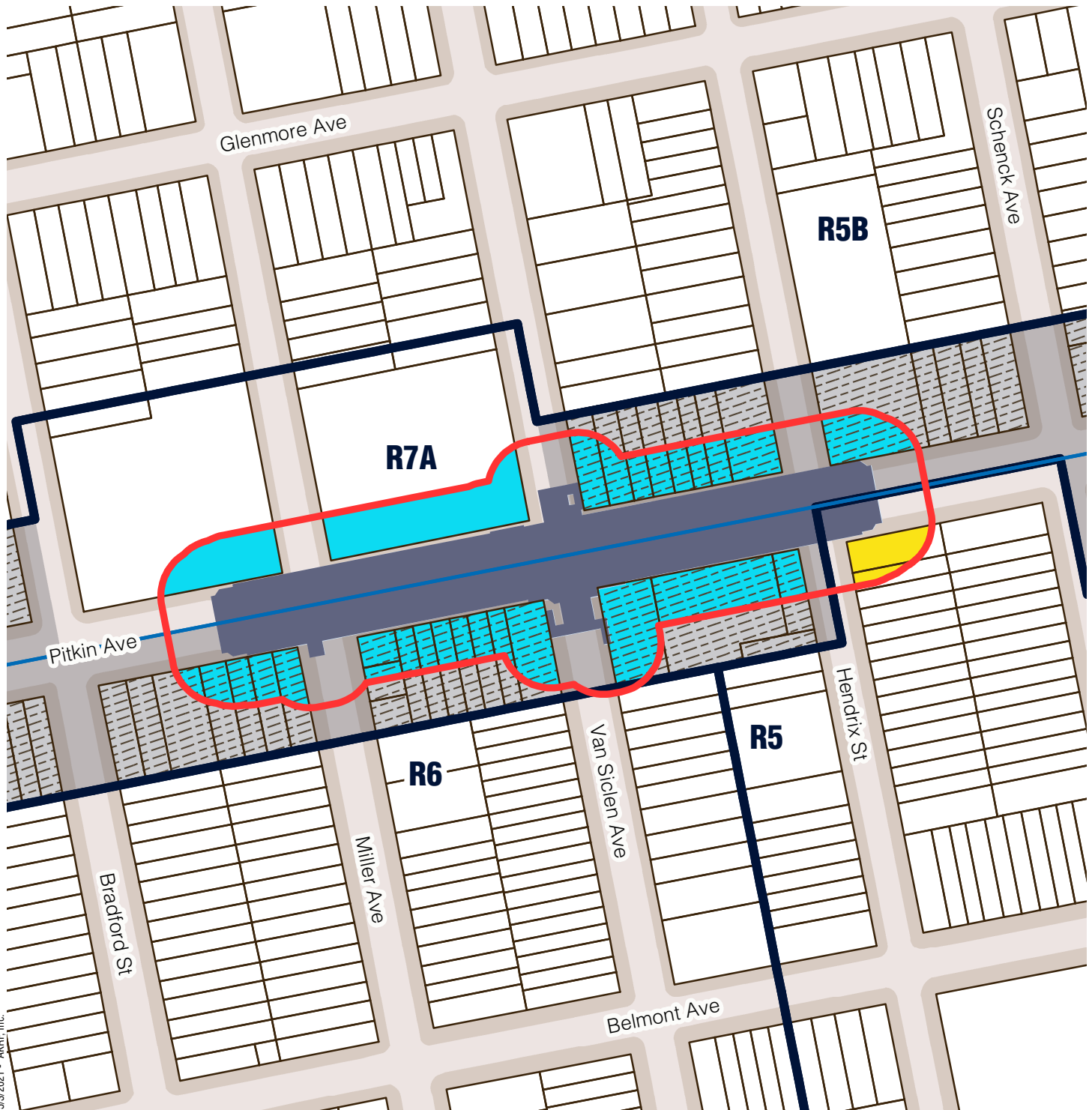
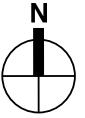
0 200 Feet

Sources/ Notes  
DCP, MapPLUTO/GIS Zoning  
Features MTA, GIS Station Areas

Station outline and area of  
applicability are approximate.

# Brooklyn Community District 5

## Van Siclen Av (C)



5/3/2021 - AKRF, Inc.

- Station Envelope
- Zoning Districts
- Commercial Overlay
- Special District

### Proposed Easement Provisions

- 50-Foot Easement Area
- Applicable Zoning District
- Non-Applicable Zoning District

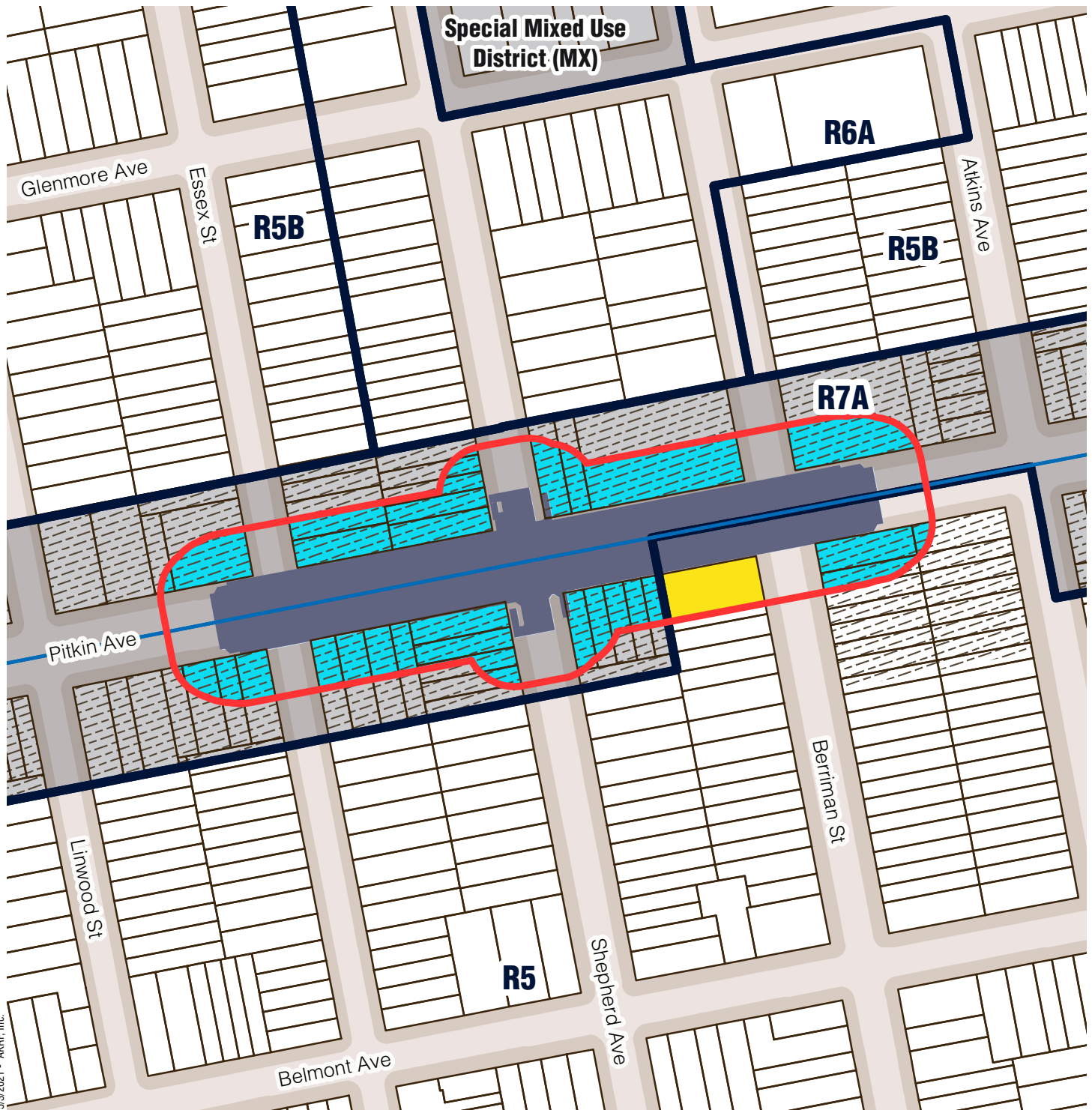
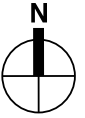
0 200 Feet

Sources/ Notes  
DCP, MapPLUTO/GIS Zoning  
Features MTA, GIS Station Areas

Station outline and area of  
applicability are approximate.

# Brooklyn Community District 5




Shepherd Av (C)



5/3/2021 - AKRF, Inc.

-  Station Envelope
-  Zoning Districts
-  Commerical Overlay
-  Special District

## Proposed Easement Provisions

-  50-Foot Easement Area
-  Applicable Zoning District
-  Non-Applicable Zoning District

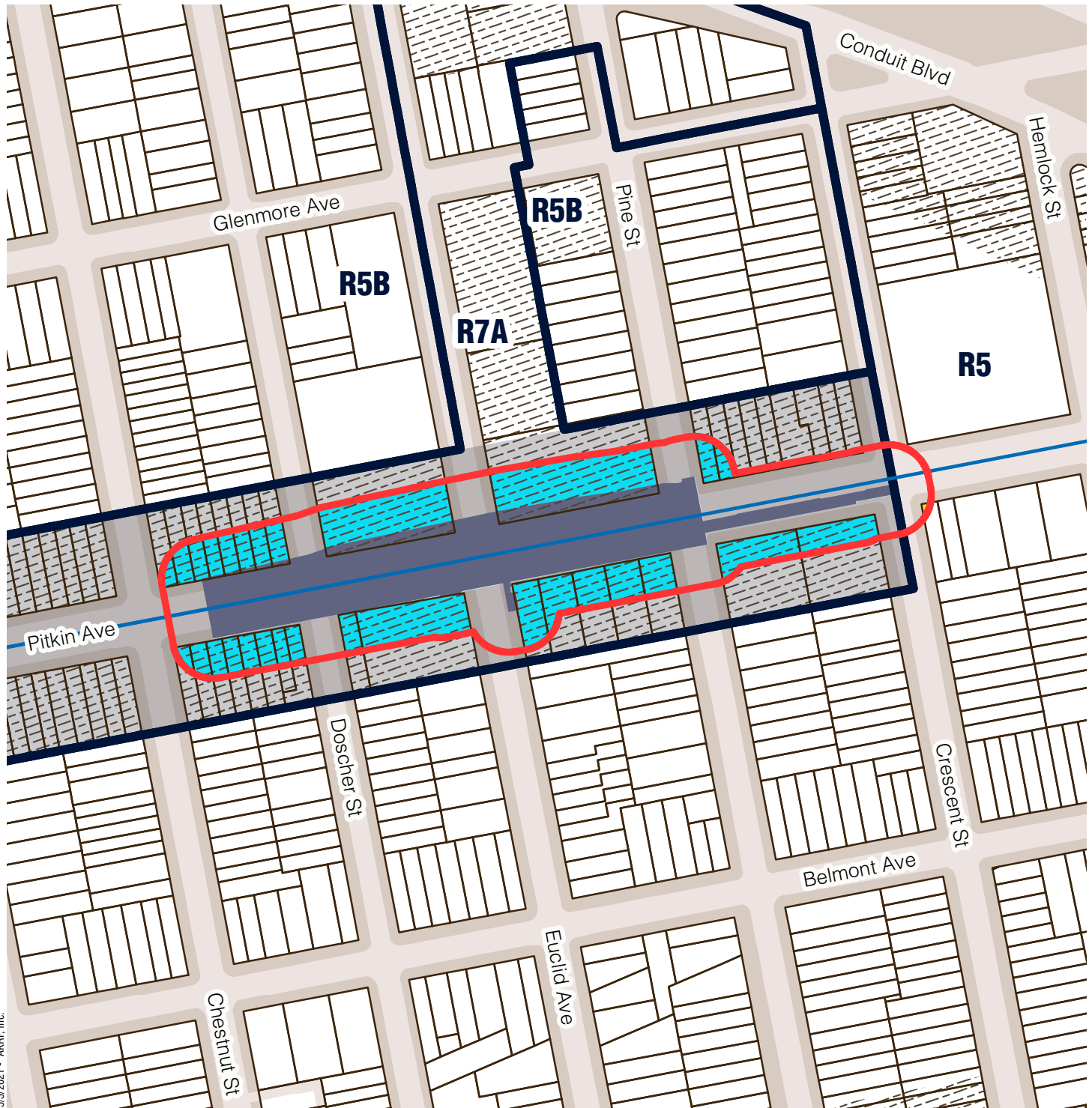
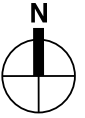
0 200 Feet

Sources/ Notes  
DCP, MapPLUTO/GIS Zoning  
Features MTA, GIS Station Areas

Station outline and area of  
applicability are approximate.

# Brooklyn Community District 5




Euclid Av (A, C)




5/3/2021 - AKRF, Inc.

-  Station Envelope
-  Zoning Districts
-  Commerical Overlay
-  Special District

## Proposed Easement Provisions

-  50-Foot Easement Area
-  Applicable Zoning District
-  Non-Applicable Zoning District

0 250 Feet

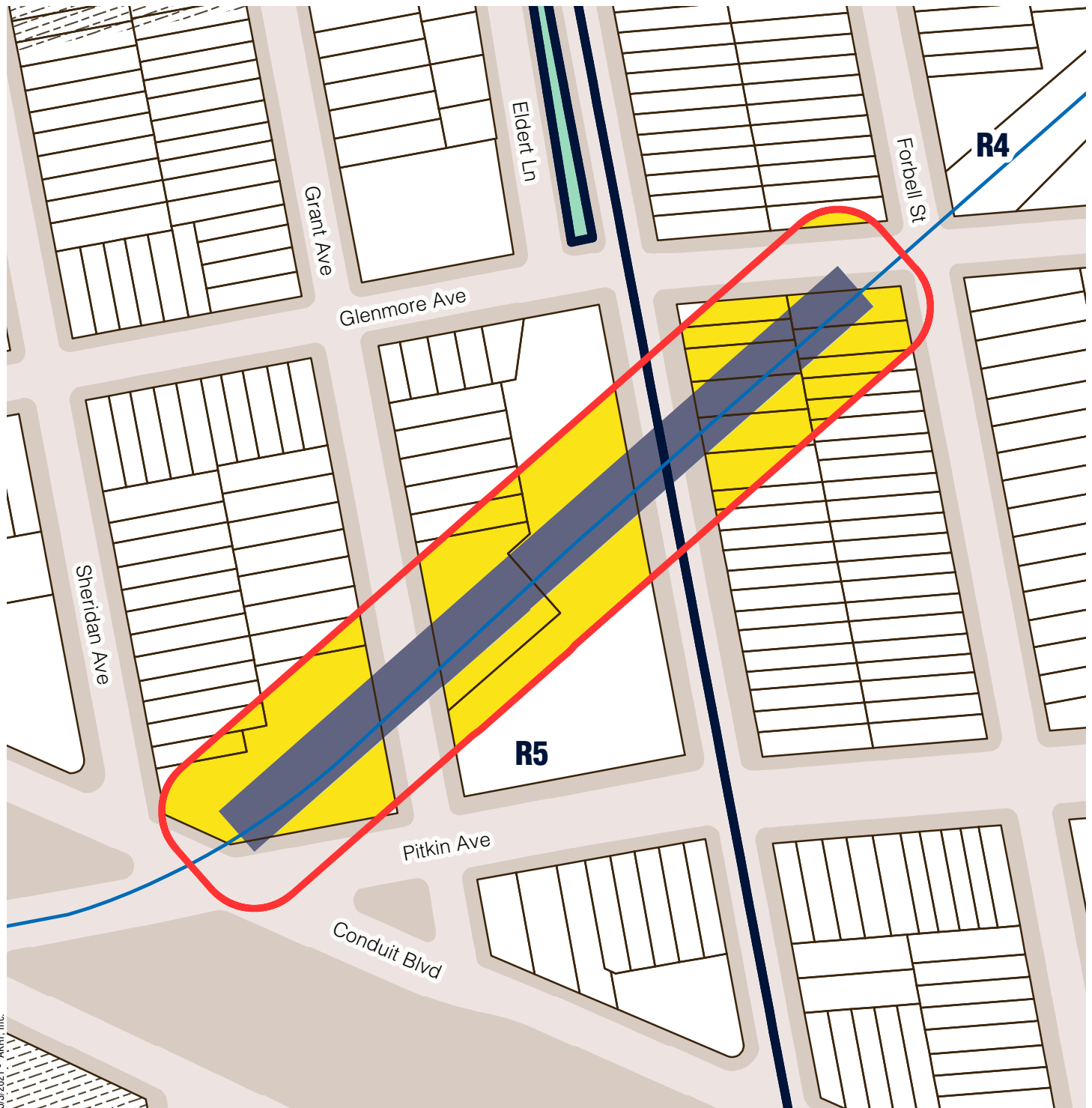
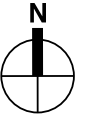


Sources/ Notes  
DCP, MapPLUTO/GIS Zoning  
Features MTA, GIS Station Areas





Station outline and area of  
applicability are approximate.

# Brooklyn Community District 5




## Grant Av (A)



5/3/2021 - AKRF, Inc.

-  Station Envelope
-  Zoning Districts
-  Commerical Overlay
-  Park

### Proposed Easement Provisions

-  50-Foot Easement Area
-  Applicable Zoning District
-  Non-Applicable Zoning District

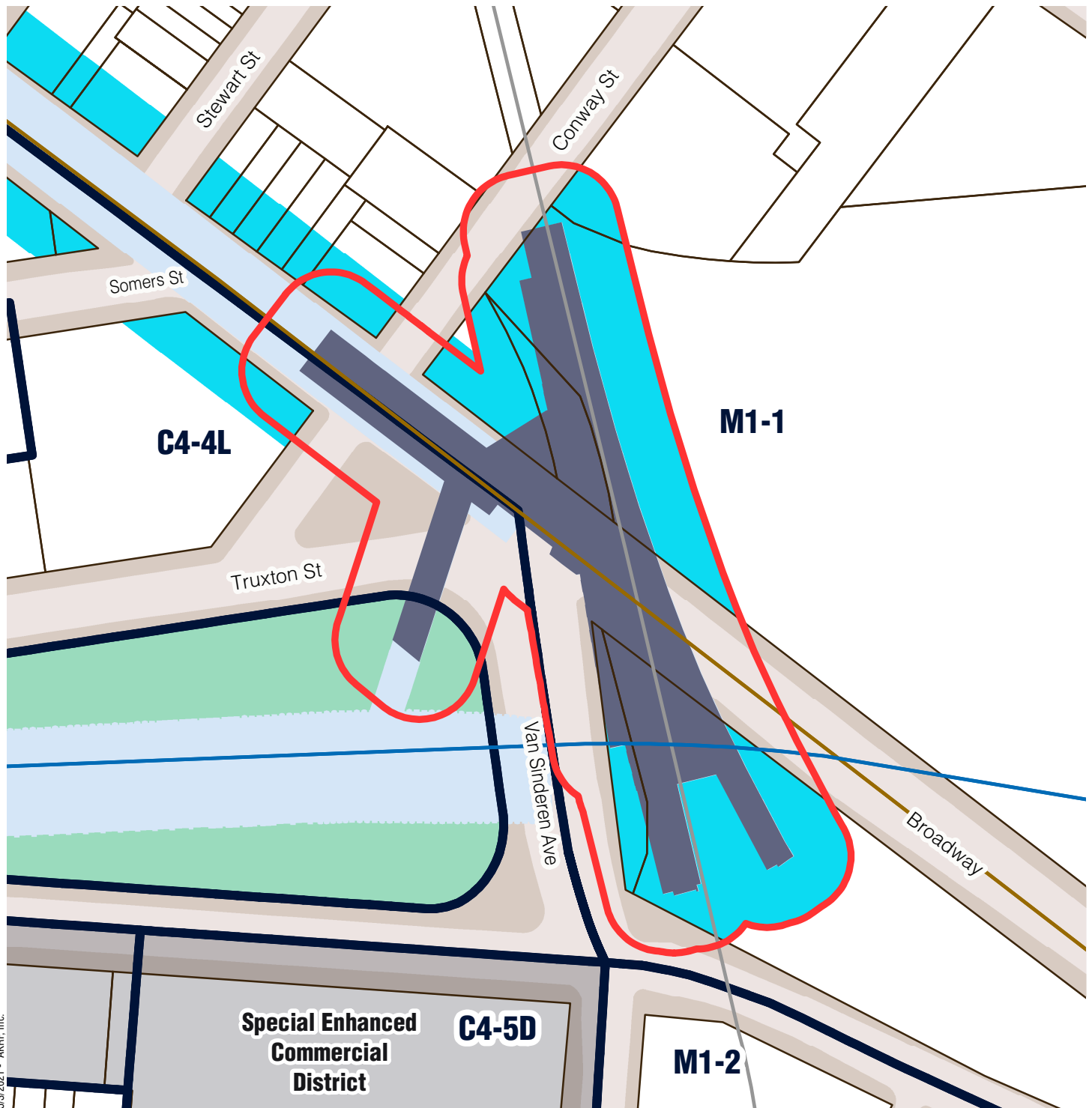
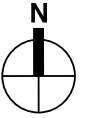
0 150 Feet

Sources/ Notes  
DCP, MapPLUTO/GIS Zoning  
Features MTA, GIS Station Areas

Station outline and area of  
applicability are approximate.

# Brooklyn Community District 5

## Broadway Junction (L)



5/3/2021 - AKRF, Inc.

- Station Envelope
- Zoning Districts
- Park
- Special District

### Proposed Easement Provisions

- 50-Foot Easement Area
- Applicable Zoning District
- Non-Applicable Zoning District

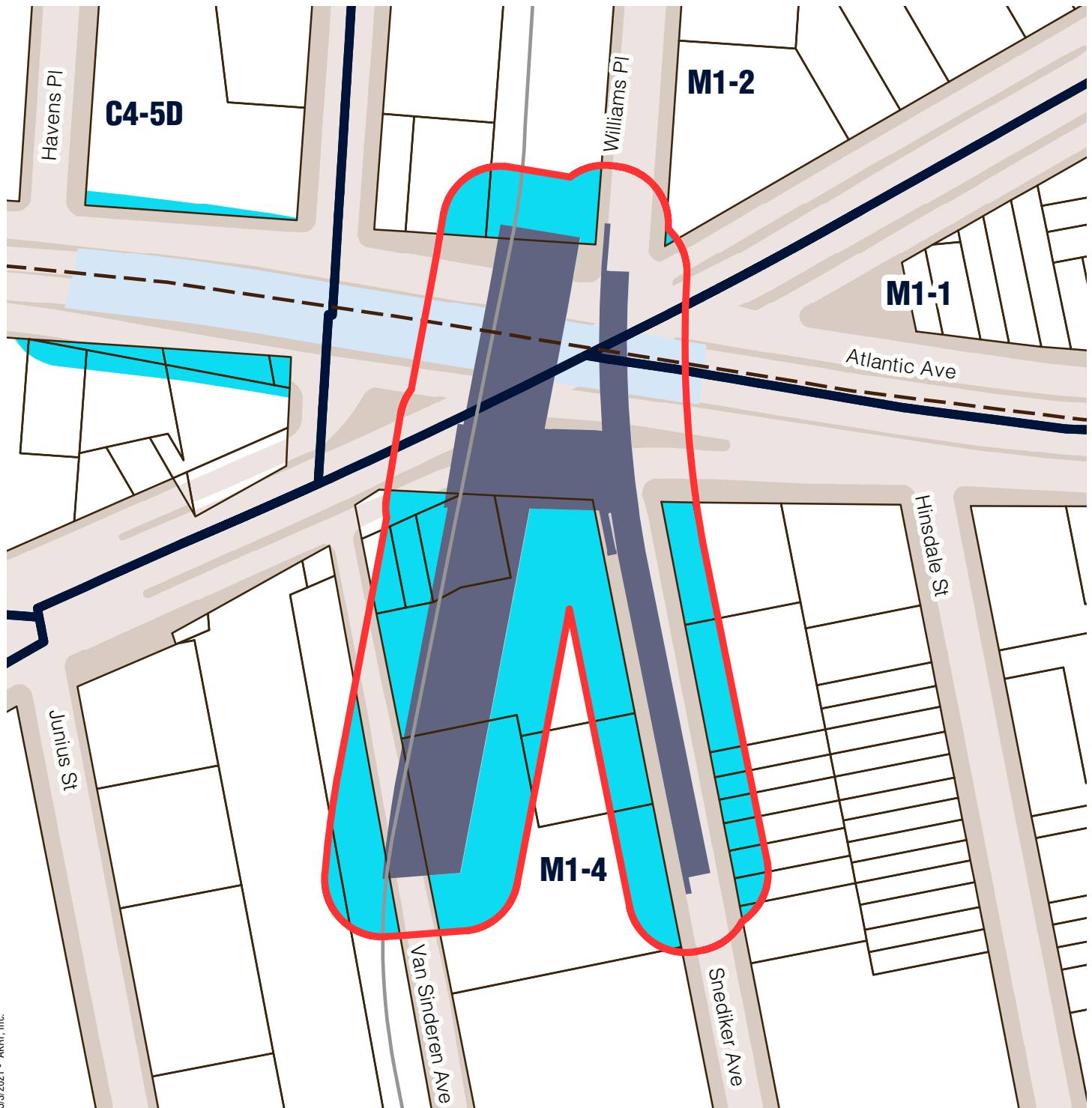
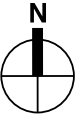
0 150 Feet

Sources/ Notes  
DCP, MapPLUTO/GIS Zoning  
Features MTA, GIS Station Areas



Station outline and area of  
applicability are approximate.

# Brooklyn Community District 5




## Atlantic Av (L)



5/3/2021 - AKRF, Inc.

-  Station Envelope
-  Zoning Districts

### Proposed Easement Provisions

-  50-Foot Easement Area
-  Applicable Zoning District
-  Non-Applicable Zoning District

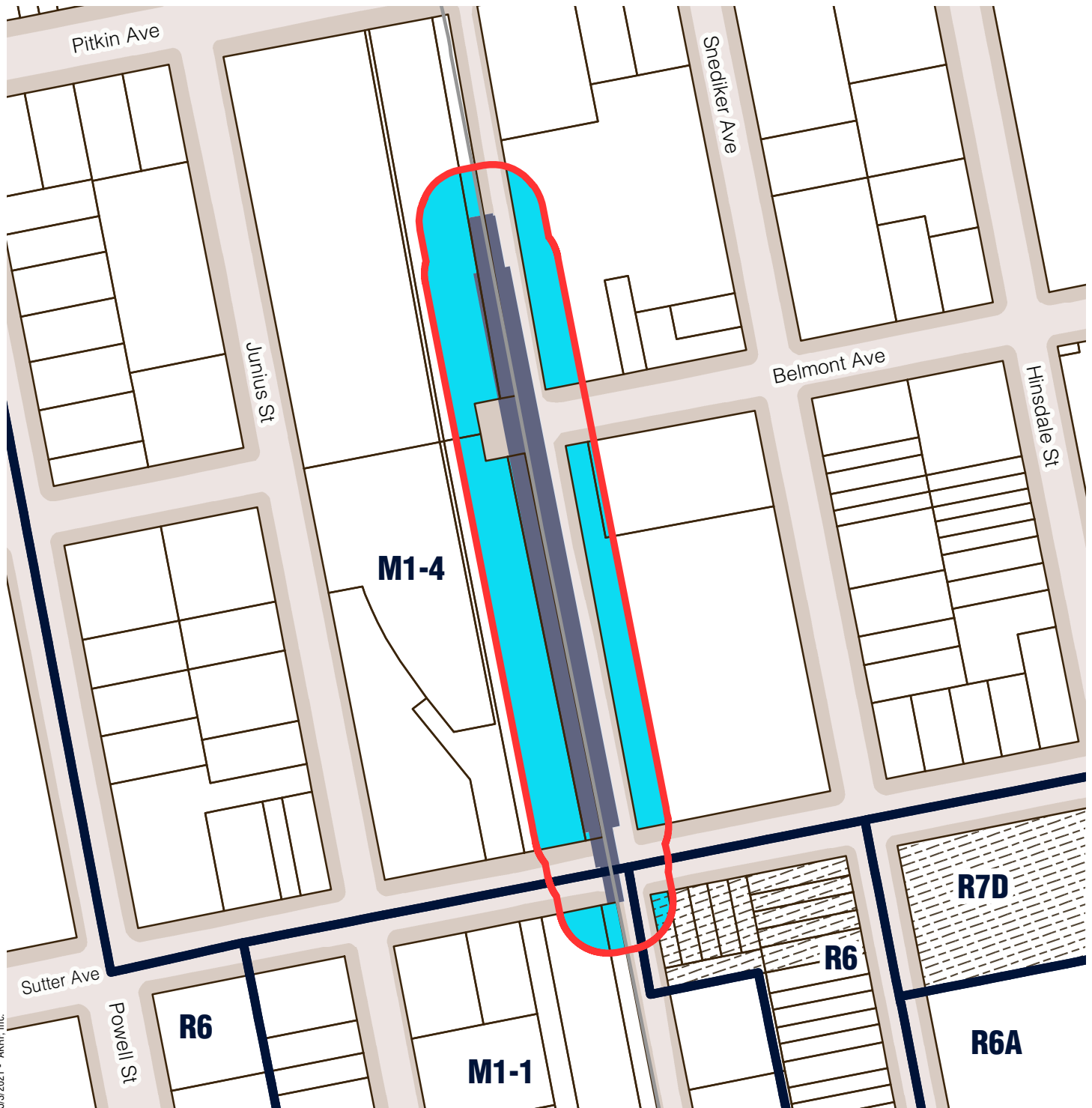
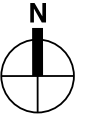
0 150 Feet

Sources/ Notes  
DCP, MapPLUTO/GIS Zoning  
Features MTA, GIS Station Areas




Station outline and area of  
applicability are approximate.

# Brooklyn Community District 5




## Sutter Av (L)



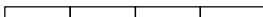
5/3/2021 - AKRF, Inc.

-  Station Envelope
-  Zoning Districts
-  Commercial Overlay

### Proposed Easement Provisions

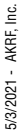
-  50-Foot Easement Area
-  Applicable Zoning District
-  Non-Applicable Zoning District

0 200 Feet



Sources/ Notes  
DCP, MapPLUTO/GIS Zoning  
Features MTA, GIS Station Areas

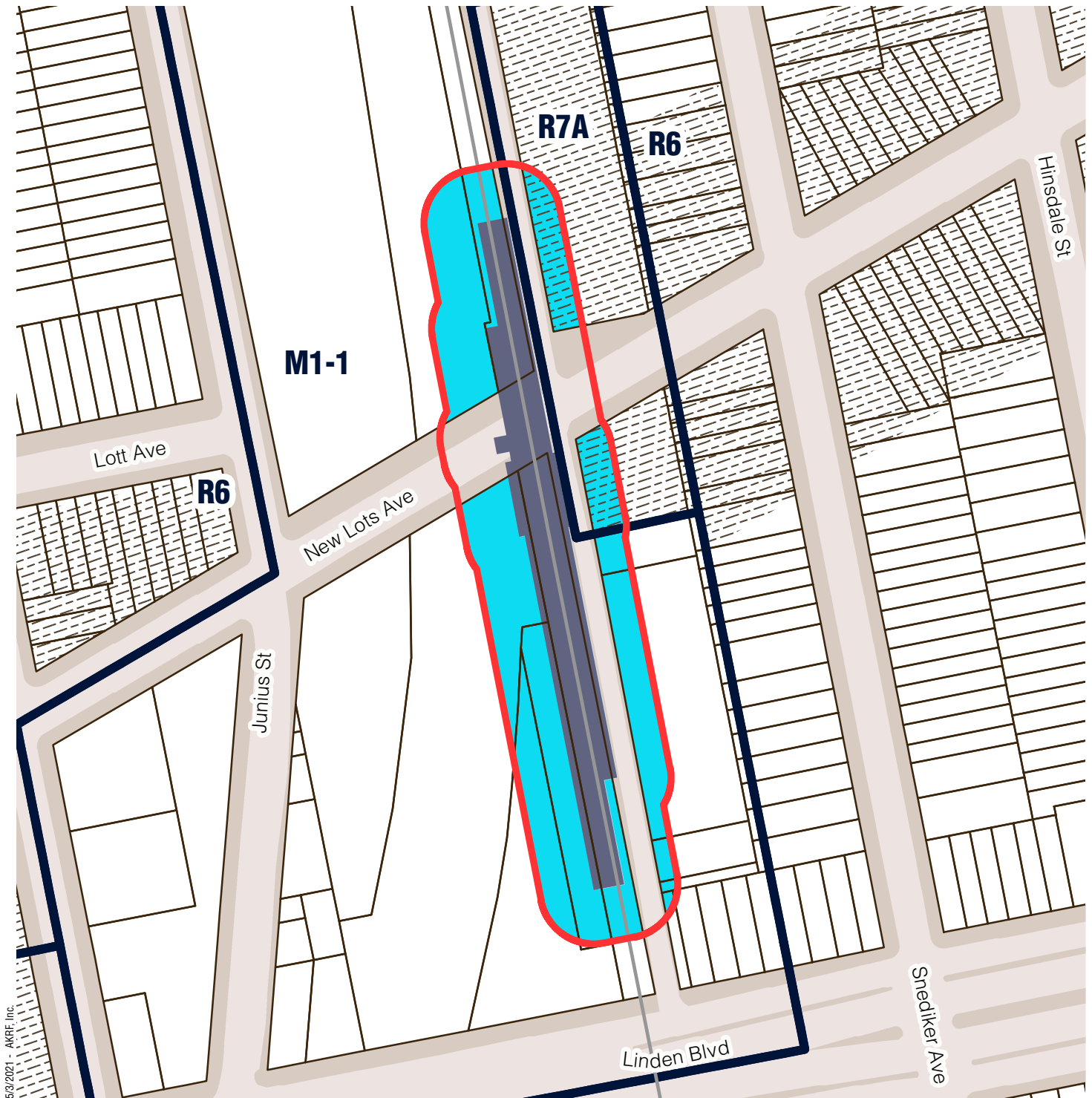
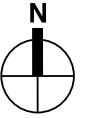
Station outline and area of  
applicability are approximate.



- Station outline and area of applicability are approximate.

# Brooklyn Community District 5

## New Lots Av (L)



5/3/2021 - AKRF, Inc.

- Station Envelope
- Zoning Districts
- Commerical Overlay

### Proposed Easement Provisions

- 50-Foot Easement Area
- Applicable Zoning District
- Non-Applicable Zoning District

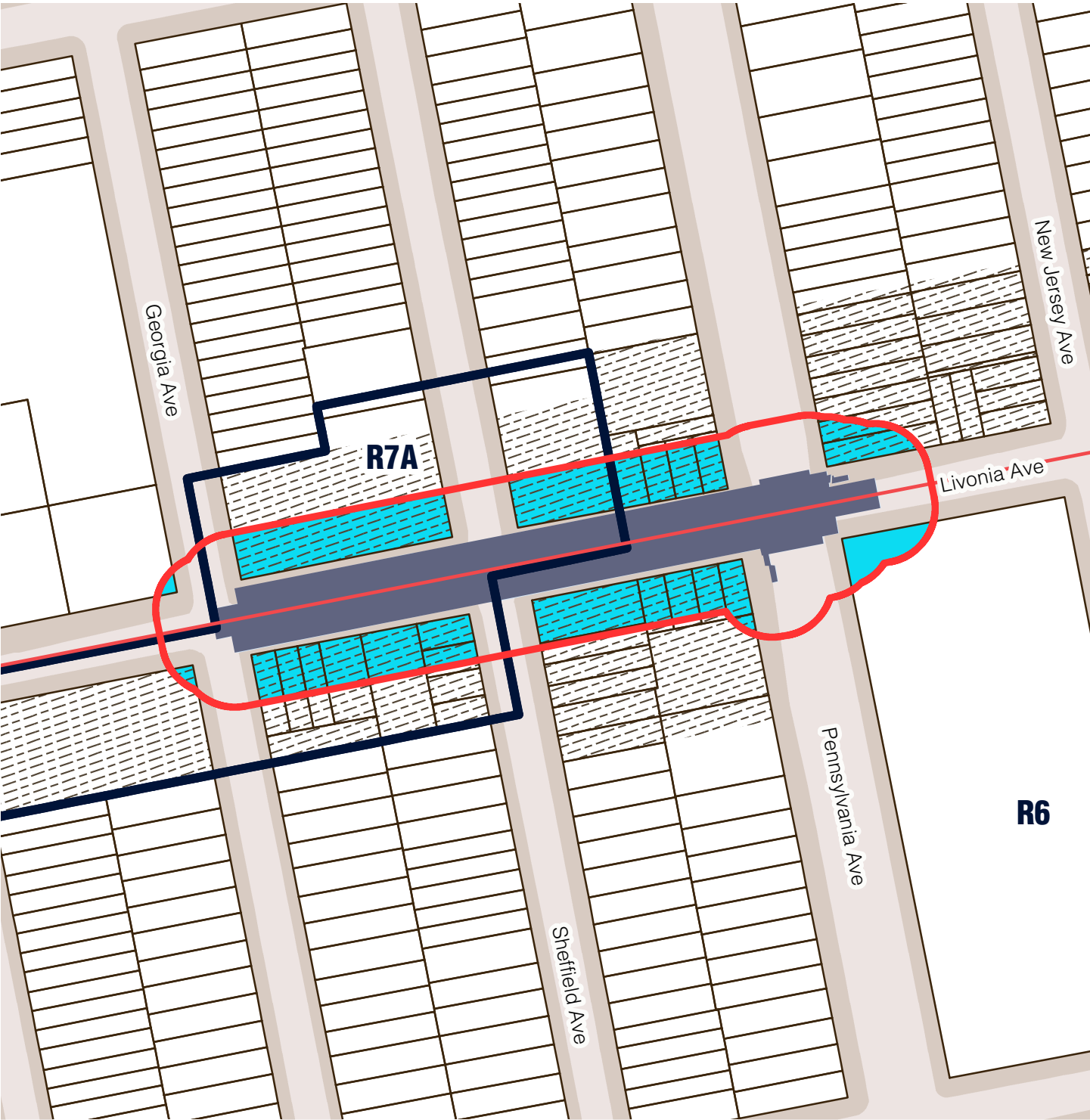
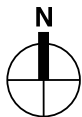
0 150 Feet

Sources/ Notes  
DCP, MapPLUTO/GIS Zoning  
Features MTA, GIS Station Areas

Station outline and area of  
applicability are approximate.

# Brooklyn Community District 5

## Pennsylvania Av (3)



5/3/2021 - AKRF, Inc.

- Station Envelope
- Zoning Districts
- Commerical Overlay

- Proposed Easement Provisions**
- 50-Foot Easement Area
  - Applicable Zoning District
  - Non-Applicable Zoning District

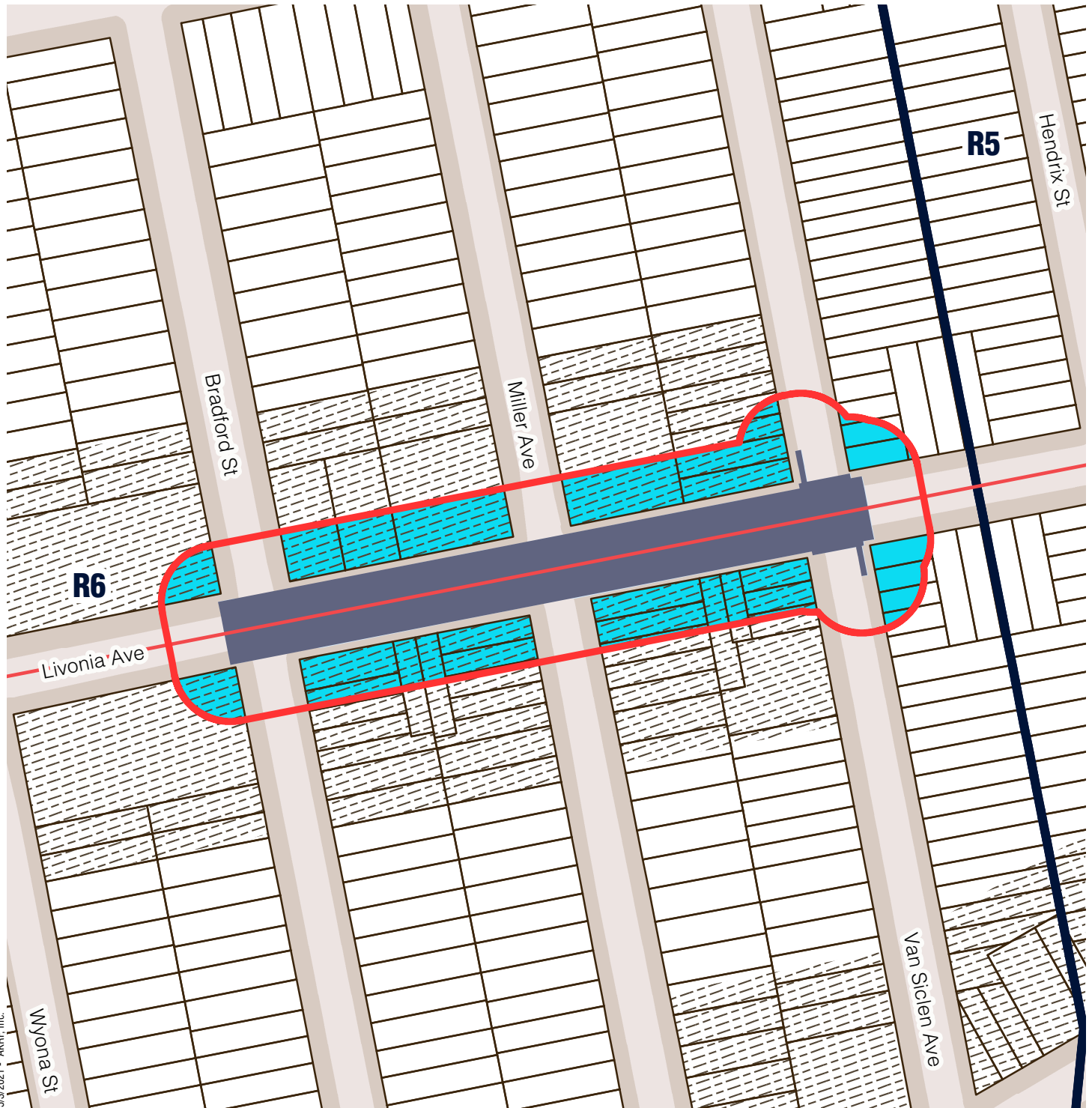
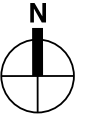
0 150 Feet

Sources/ Notes  
DCP, MapPLUTO/GIS Zoning  
Features MTA, GIS Station Areas




Station outline and area of  
applicability are approximate.

# Brooklyn Community District 5




## Van Siclen Av (3)




5/3/2021 - AKRF, Inc.

-  Station Envelope
-  Zoning Districts
-  Commercial Overlay

### Proposed Easement Provisions

-  50-Foot Easement Area
-  Applicable Zoning District
-  Non-Applicable Zoning District

0 150 Feet

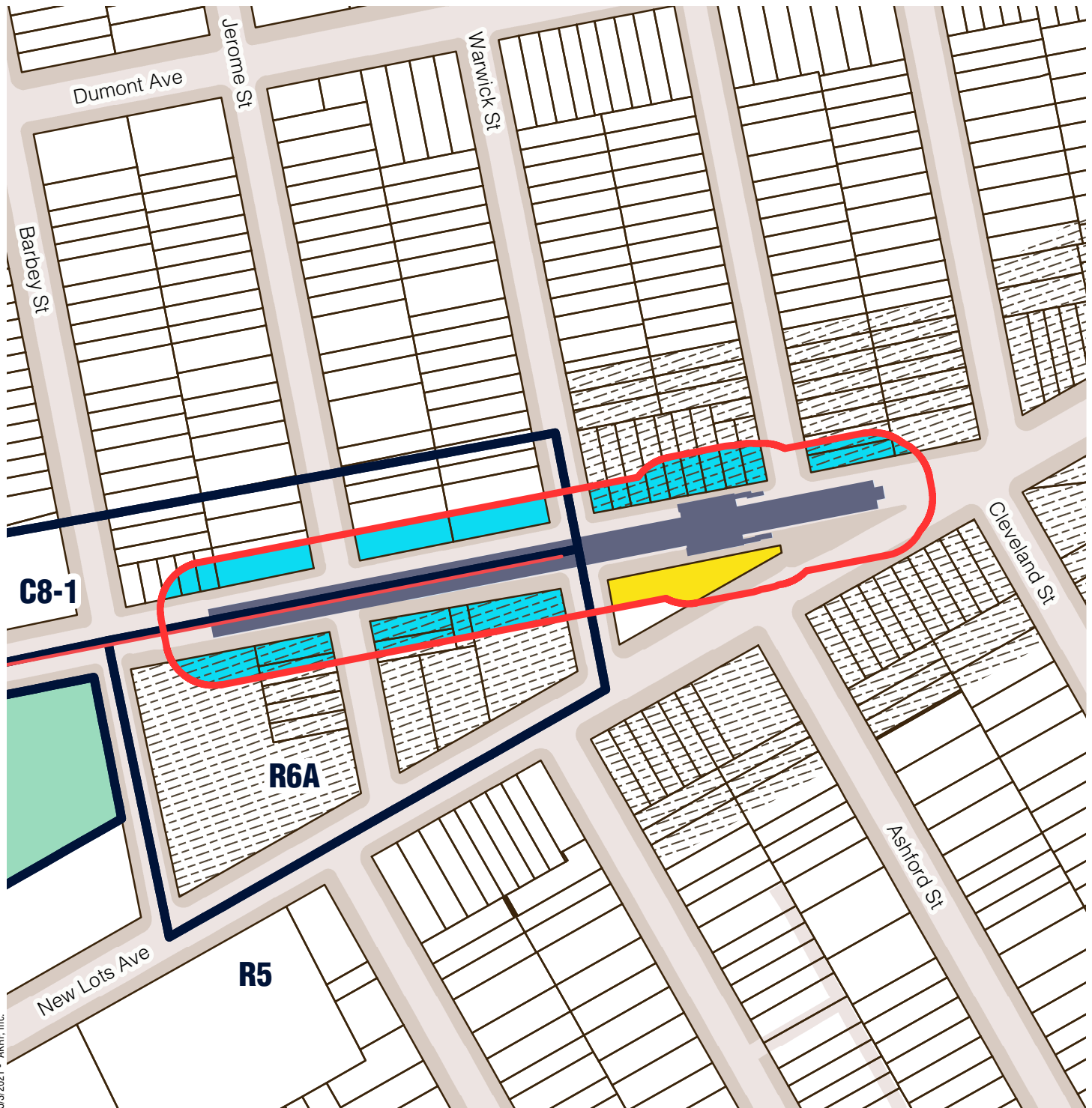
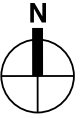


Sources/ Notes  
DCP, MapPLUTO/GIS Zoning  
Features MTA, GIS Station Areas





Station outline and area of  
applicability are approximate.

# Brooklyn Community District 5




## New Lots Av (3)



5/3/2021 - AKRF, Inc.

-  Station Envelope
-  Zoning Districts
-  Commerical Overlay
-  Park

### Proposed Easement Provisions

-  50-Foot Easement Area
-  Applicable Zoning District
-  Non-Applicable Zoning District

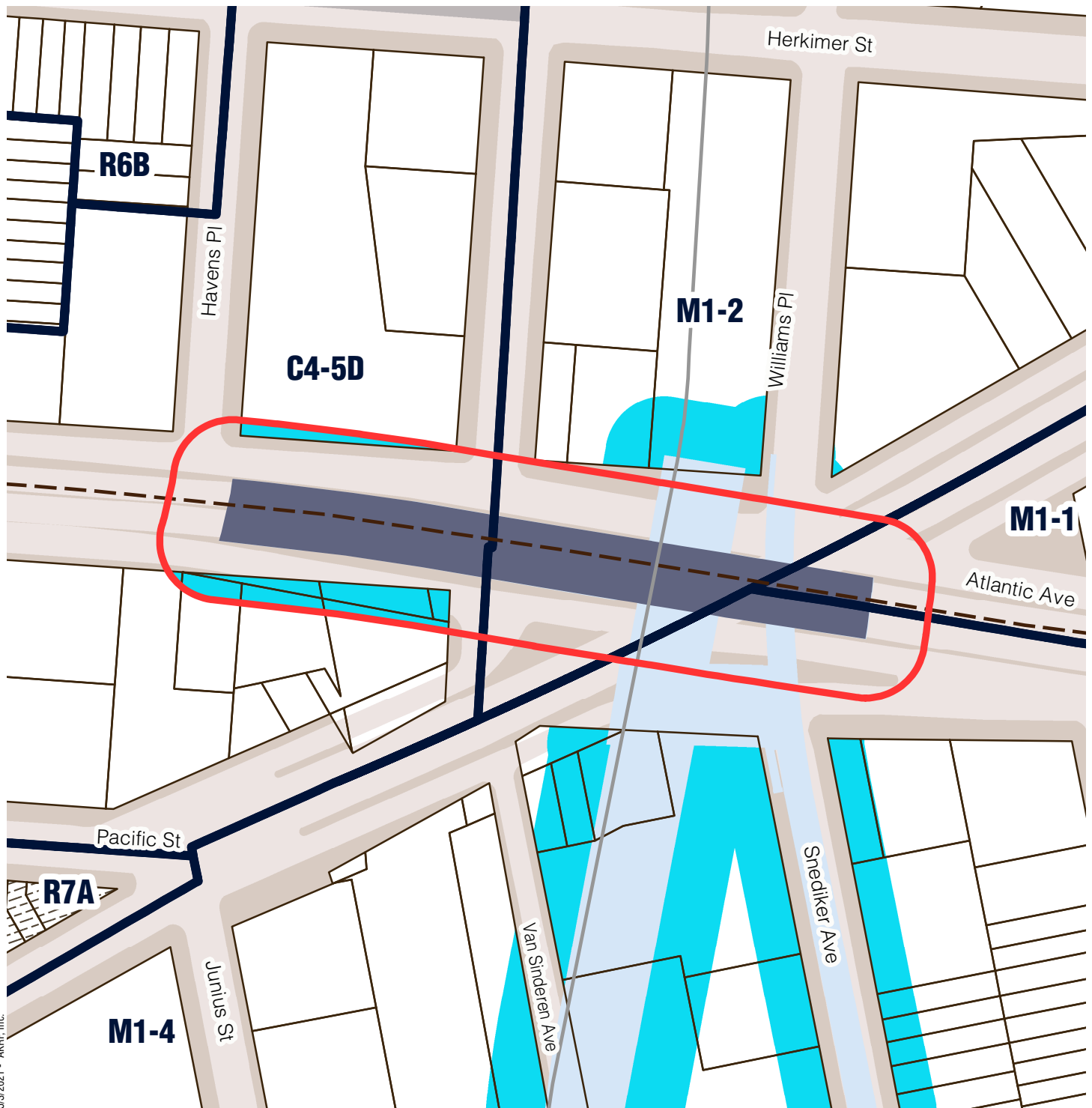
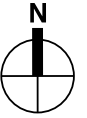
0 200 Feet

Sources/ Notes  
DCP, MapPLUTO/GIS Zoning  
Features MTA, GIS Station Areas

Station outline and area of  
applicability are approximate.

# Brooklyn Community District 5




## East New York (LIRR)




5/3/2021 - AKRF, Inc.

-  Station Envelope
-  Zoning Districts
-  Commercial Overlay
-  Special District

### Proposed Easement Provisions

-  50-Foot Easement Area
-  Applicable Zoning District
-  Non-Applicable Zoning District

0 150 Feet



Sources/ Notes  
DCP, MapPLUTO/GIS Zoning  
Features MTA, GIS Station Areas

Station outline and area of  
applicability are approximate.