



Broadway Junction Community Visioning Forum March 3, 2012

Summary Report

Image: NYC DCP



NEW YORK & CONNECTICUT
SUSTAINABLE COMMUNITIES

NYCPLANNING
DEPARTMENT OF CITY PLANNING CITY OF NEW YORK

Sustainable Communities East New York



On March 3, 2012, the Department of City Planning (DCP) held a Visioning Forum at the Aspirations High School at Broadway Junction as part of the Department's outreach effort for its "[Sustainable Communities East New York](#)" study. Sustainable East New York is one of several projects throughout the region undertaken by the [New York-Connecticut Sustainable Communities Consortium](#), a collaboration of 17 municipalities, counties and planning organizations funded by a U.S. Department of Housing and Urban Development Sustainable Communities Grant.

The Visioning Forum allowed residents and stakeholders to identify issues and opportunities of the area around the Broadway Junction subway station and East New York Long Island Railroad (LIRR) station. Broadway Junction is a major transit hub for the surrounding residential communities of Brownsville, Ocean Hill, Bushwick and East New York, and a gateway for people working in the East New York Industrial Business Zone (IBZ).

Sustainable Communities East New York

The Visioning Forum focused on the western section of the Sustainable East New York Study Area



The Broadway Junction area and the East New York IBZ are located at the western edge of the Sustainable Communities East New York study area.

The area includes access to several bus lines, five subway lines and to regional rail via the LIRR at the East New York station. The area poses distinct, unique challenges and opportunities to the Sustainable Communities East New York study area.

Image: NYC DCP

Community Outreach

The Visioning Forum is part of a comprehensive outreach strategy to include as many residents and other stakeholders as possible to make the planning process even more inclusionary and transparent.



The Visioning Forum is part of a comprehensive outreach strategy to include as many residents and other stakeholders as possible to allow for an inclusionary and transparent planning process.

To publicize the Visioning Forum, DCP emailed over 160 residents and other stakeholders, made announcements at meetings of Community Boards 5 and 16, and sent invitations to elected officials and their staff. The event was also posted on the DCP and the Sustainable Communities Consortium website and there were twitter updates from DCP, Arts East New York and others.



Forum Participants



More than 80 people participated in the forum that included a walking tour and workshop sessions

More than 80 people participated in the workshop which was held at the Aspirations High School in close proximity to the Broadway Junction station. Participants included East New York and Brownsville residents, representatives from non-profit organizations, city agencies, elected officials and their staff and graduate students from New York University, Hunter College and Pratt Institute.

Image: NYC DCP



Forum Activities

The workshop consisted of a walking tour in the morning and workshop sessions in the afternoon



9:15 am Registration

9:45am Welcome & Introductions

- Samuel Hornick, Director of Strategic Planning, DCP
- Winston Von Engel, Deputy Director, DCP Brooklyn Office

10:30am Walking Tours

- Participants chose one of four different guided tours. The tour routes focused on Land Use and Housing Services, Industry & Economic Development, Transportation & Infrastructure, and Urban Design
- A “Virtual Tour” was offered at the school for those who could not join the walking tours

12:00pm Break-out Sessions

- Participants met with their walking-tour groups
- Facilitators conducted three exercises; the first identified issues and opportunities in the area based on observations from the walking tours. The second explored recommendations to the previously identified issues, and the third in the third exercise, group members prioritized their recommendations.

1:30pm Wrap-up

- Volunteers from each break-out group presented their group’s recommendations to the other participants and their prioritization.

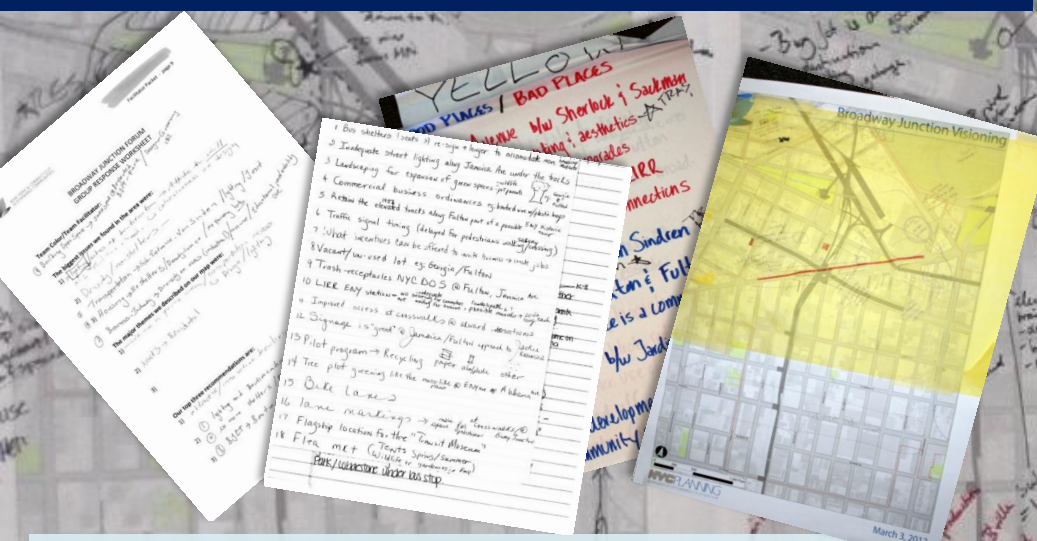
Images: NYC DCP

Orthophoto Base Map: Copyrighted by the New York City Department of Information Technology and Telecommunications. All rights reserved.

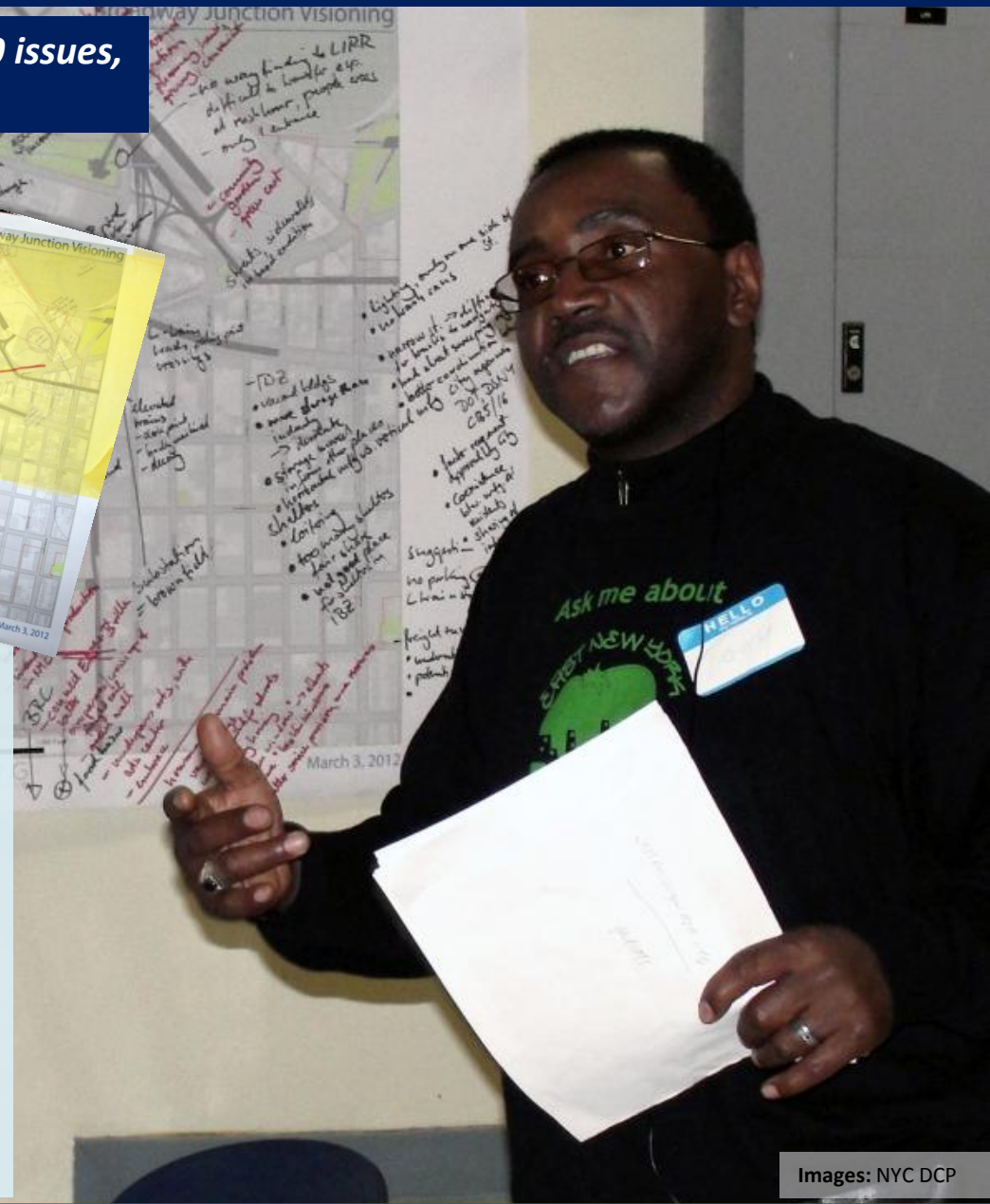


What we heard...

Forum Participants presented identified over 230 issues, concerns and opportunities throughout the area



- Many issues community participants identified revolved around **SAFETY** and the **PERCEPTION OF SAFETY** around the Broadway Junction area
- Other major community concerns included limited **ACCESS TO SERVICES**, not enough **AFFORDABLE**, **QUALITY HOUSING**, and **OVERSATURATION OF** certain land uses such as **HOMELESS SHELTERS** and **BUS PARKING**
- Forum participants identified and presented over 230 issues, concerns and opportunities



Images: NYC DCP



What we heard...Land Use & Housing

Image: NYC DCP

ISSUES

- Many vacant lots and underutilized land
- Lack of high quality affordable housing
- Lack of services and retail, including healthy food to meet the needs of the community
- Lack of educational opportunities
- Excess homeless shelters

OPPORTUNITIES

- Numerous sites for housing, including affordable housing, and retail and services that serve residents' needs 24/7
- Transit hub areas as focus for development
- Streets and underutilized land to be improved with activate streetscape
- Amenities for residents and transit users

The area has large amounts of inactive uses with little pedestrian activity such as bus-parking, warehousing, underutilized land and homeless shelters. Residents and transit users would like to see more active uses, such as better retail options and services to encourage safer and more enjoyable streets. More quality affordable housing is needed.



What we heard...Transportation & Urban Design

The area is serviced by the A, C, J, Z, and L subway lines , the Long Island Rail Road at the East New York station, and numerous Brooklyn and Queens-bound bus routes. However, physical isolation, safety concerns and an unpleasant environment severely hamper the use of these transit options by residents, area employees and visitors.

ISSUES

- Only one entrance to Broadway Junction subway station, not ADA compliant
- No wayfinding or street furniture
- Poor street and sidewalk conditions, poor lighting
- LIRR underpass is in deplorable condition
- Unsafe intersections for pedestrians
- Transit options are isolated from residential areas, area feels unsafe

OPPORTUNITIES

- Improve sidewalk conditions, the LIRR underpass, streetscape and lighting
- Improve interconnectivity and wayfinding between various transit options
- Improve pedestrian connections between residential areas, job centers and transit
- Study options for ADA compliant access to transit
- Add and improve area bicycle lanes
- Improve and enforce parking regulations

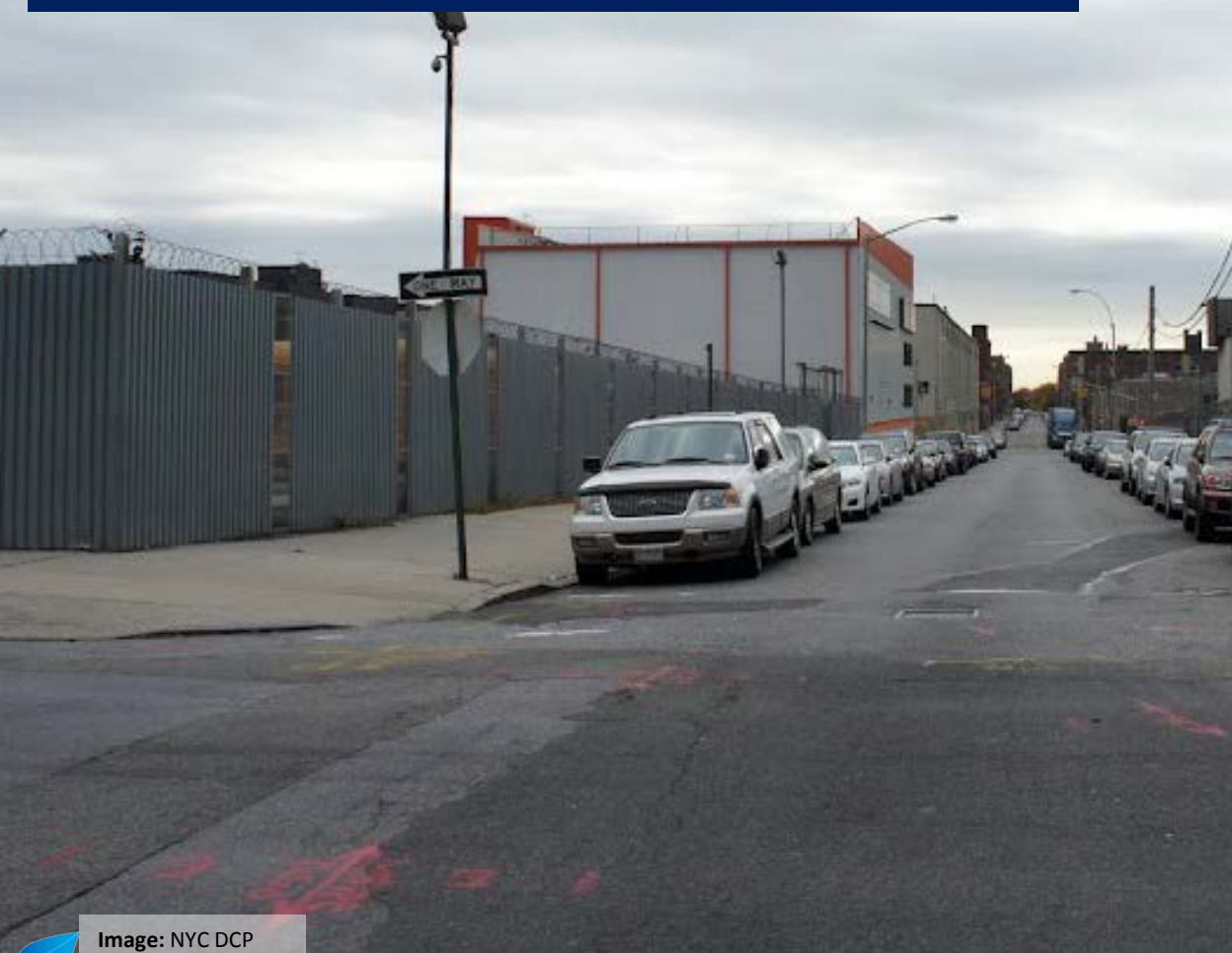


Image: NYC DCP



What we heard...Jobs & Industry

The East New York Industrial Business Zone (IBZ) is located just south of Broadway Junction and the Long Island Railroad East New York station. While the IBZ provides jobs, the community identified significant untapped potential for economic development here



ISSUES

- IBZ contains many storage and other low-intensity uses at low job density
- Mismatch of building stock and modern industrial needs
- Divides the residential neighborhoods of Brownsville and East New York
- Difficult truck access
- IBZ feels deserted & unsafe

OPPORTUNITIES

- Encourage development of more job intensive uses
- Consider sites for incubators
- Attract high-tech, light manufacturing, web, and design-oriented industries
- Incentivize local hiring
- Leverage existing access to freight rail
- Provide better access to job training and higher education for local residents
- Provide more attractive, active streetscape
- Improve traffic circulation

Image: NYC DCP

What we heard...Other Issues & Ideas

Ocean Hill-Brownsville, Cypress Hills and East New York have a rich history and a vibrant arts and cultural scene. Residents would like to leverage these assets to help the areas grow for a brilliant future.



ISSUES

- Both residents and visitors have a poor perception of the area
- Littering and illegal dumping
- Not enough open space, facilities for sports and arts, especially for youth
- Flooding and other environmental issues

OPPORTUNITIES

- Identify sites for community facilities and programs
- Improve public services including police relations and sanitation
- Foster arts and cultural activities and leverage community assets to make area a destination
- Work with local groups and communities

Image: NYC DCP

Thank You!

Department of City Planning Team

Samuel Hornick, Director, Strategic Planning

Purnima Kapur, Director, Brooklyn Office

Winston R. Von Engel, Deputy Director, Brooklyn Office

Ralph Blessing

Claudia Herasme

Justin Moore

Erik Seims

Alex Sommer

Kiyoshi Yamazaki

Aspirations HS Administration and Staff

Shermila Bharat, Principal

Martin Coren, Asst. Principal

as well as Edward, Vladimir and Jose!

Graduate Student Volunteers from

New York University

Hunter College

Pratt Institute

