

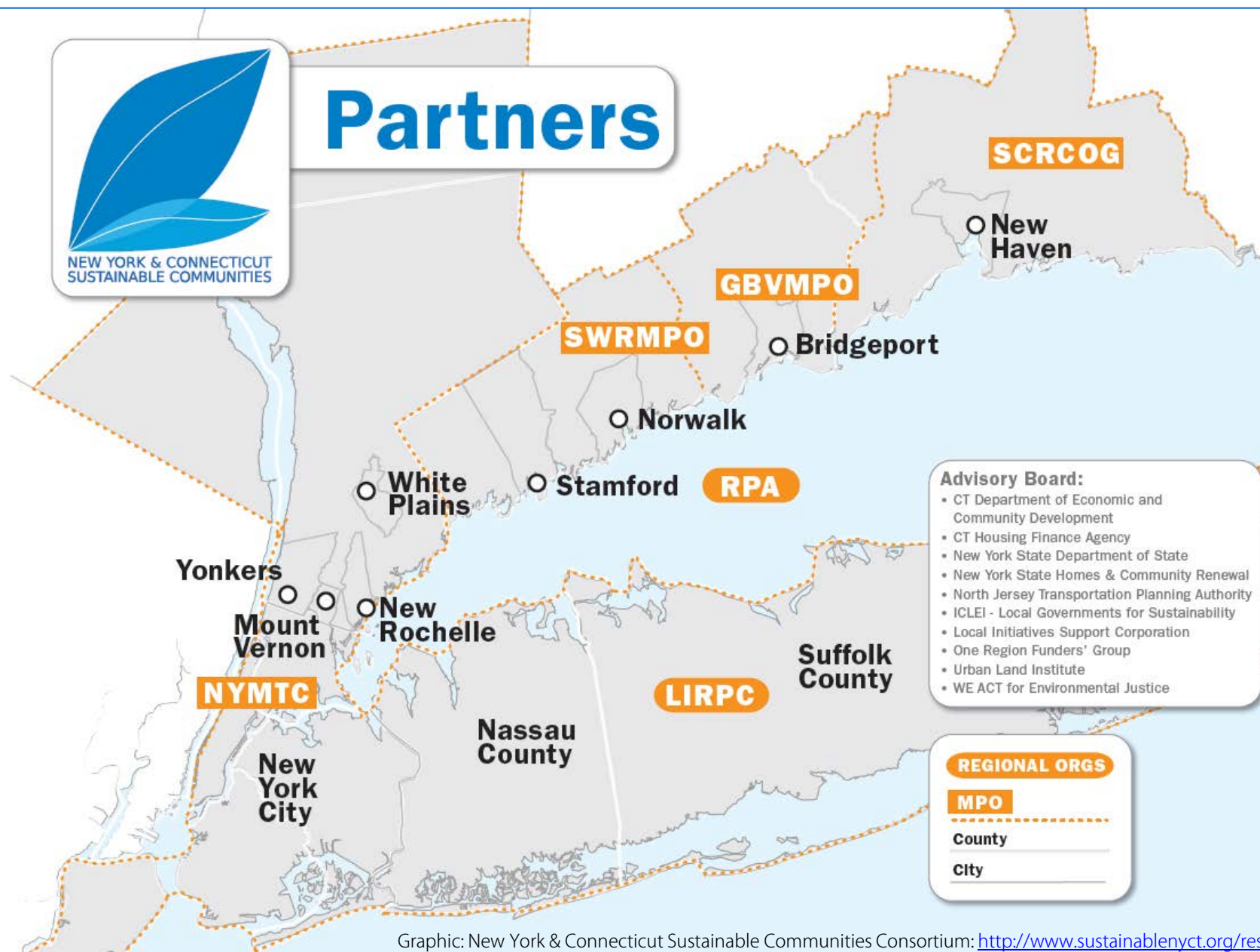
# Sustainable East New York: Background



NEW YORK & CONNECTICUT  
SUSTAINABLE COMMUNITIES

**NYC**PLANNING

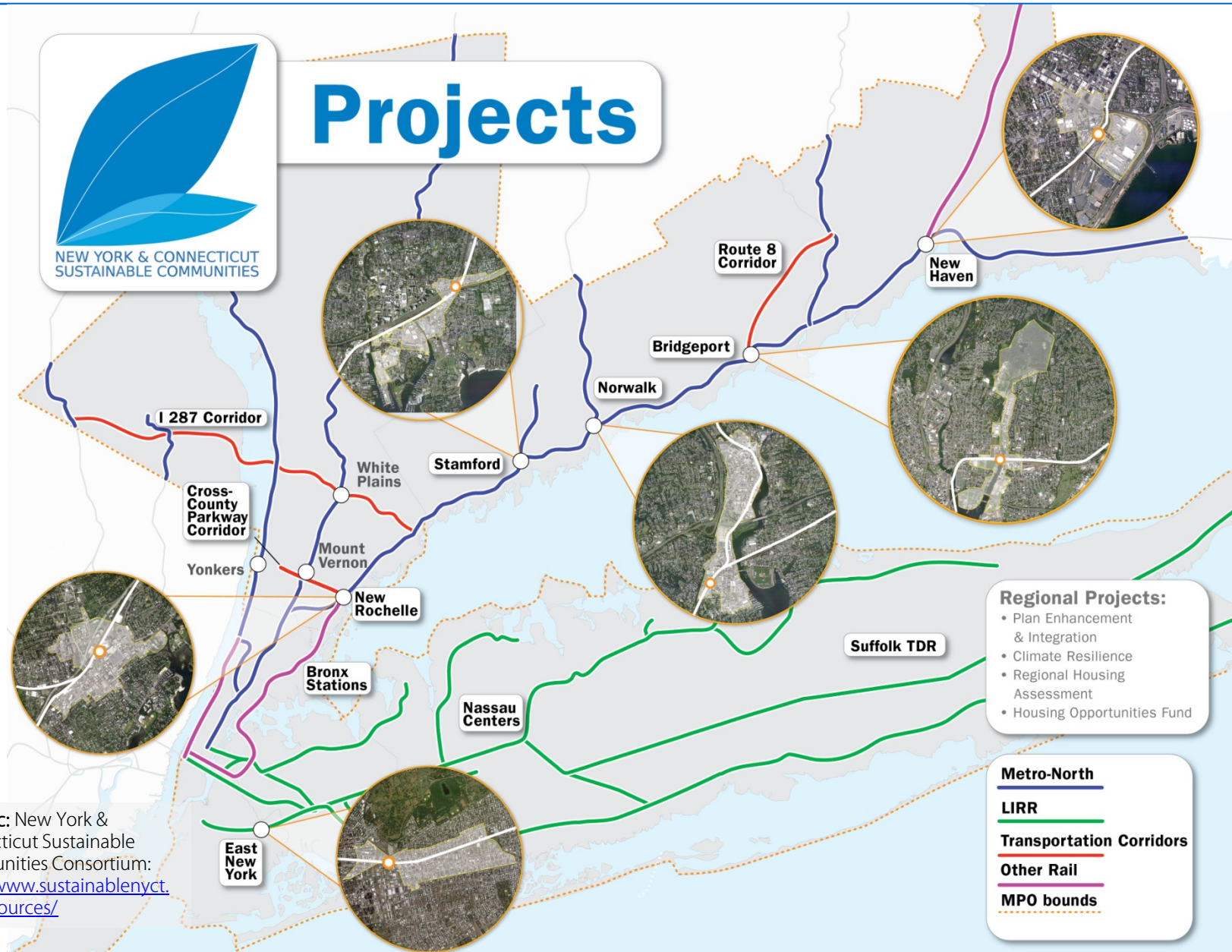
# NY & CT Sustainable Communities



Graphic: New York & Connecticut Sustainable Communities Consortium: <http://www.sustainablenyct.org/resources/>



# NY & CT Sustainable Communities

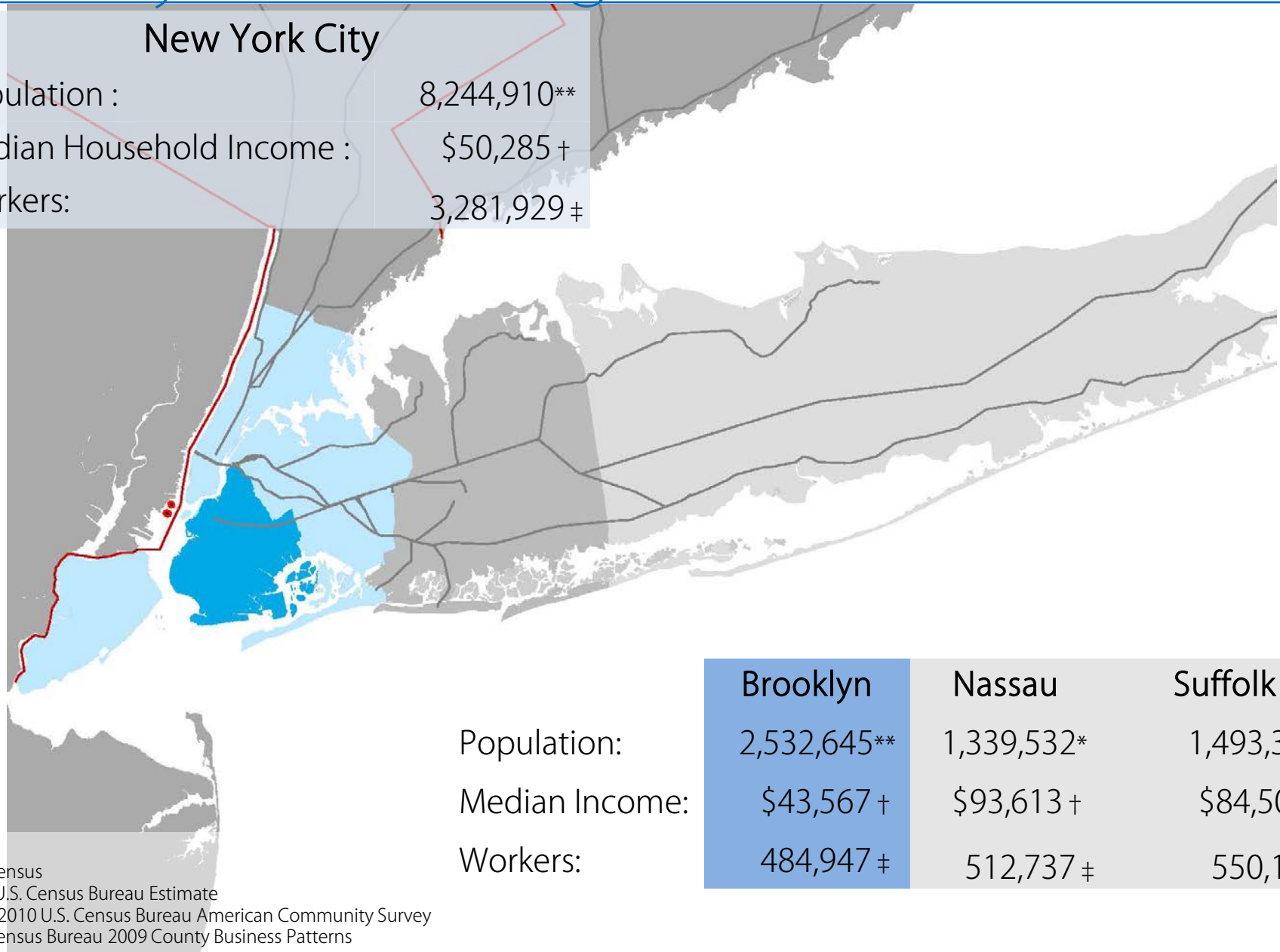




# Brooklyn in the Region

## New York City

Population : 8,244,910\*\*  
Median Household Income : \$50,285 †  
Workers: 3,281,929 ‡



	Brooklyn	Nassau	Suffolk
Population:	2,532,645**	1,339,532*	1,493,350*
Median Income:	\$43,567 †	\$93,613 †	\$84,506 †
Workers:	484,947 ‡	512,737 ‡	550,192 ‡

### Sources:

\* 2010 Census  
\*\* 2011 U.S. Census Bureau Estimate  
† 2006-2010 U.S. Census Bureau American Community Survey  
‡ U.S. Census Bureau 2009 County Business Patterns

# Brooklyn Regional Connections

## People who work in Brooklyn:

- 65% live in Brooklyn
- 13% live in Queens
- 11% live in MN, BX, or SI
- 6% live on Long Island
- 5% live outside of NYC & LI

## Commuters to Brooklyn who live outside NYC:

- 71% come by car
- 29% come by transit/other

## People who live in Brooklyn:

- 48% work in Brooklyn
- 38% work in Manhattan
- 7% work in Queens
- 5% work outside of NYC
- 2% work in SI or the BX

## Of the people who live and work in Brooklyn:

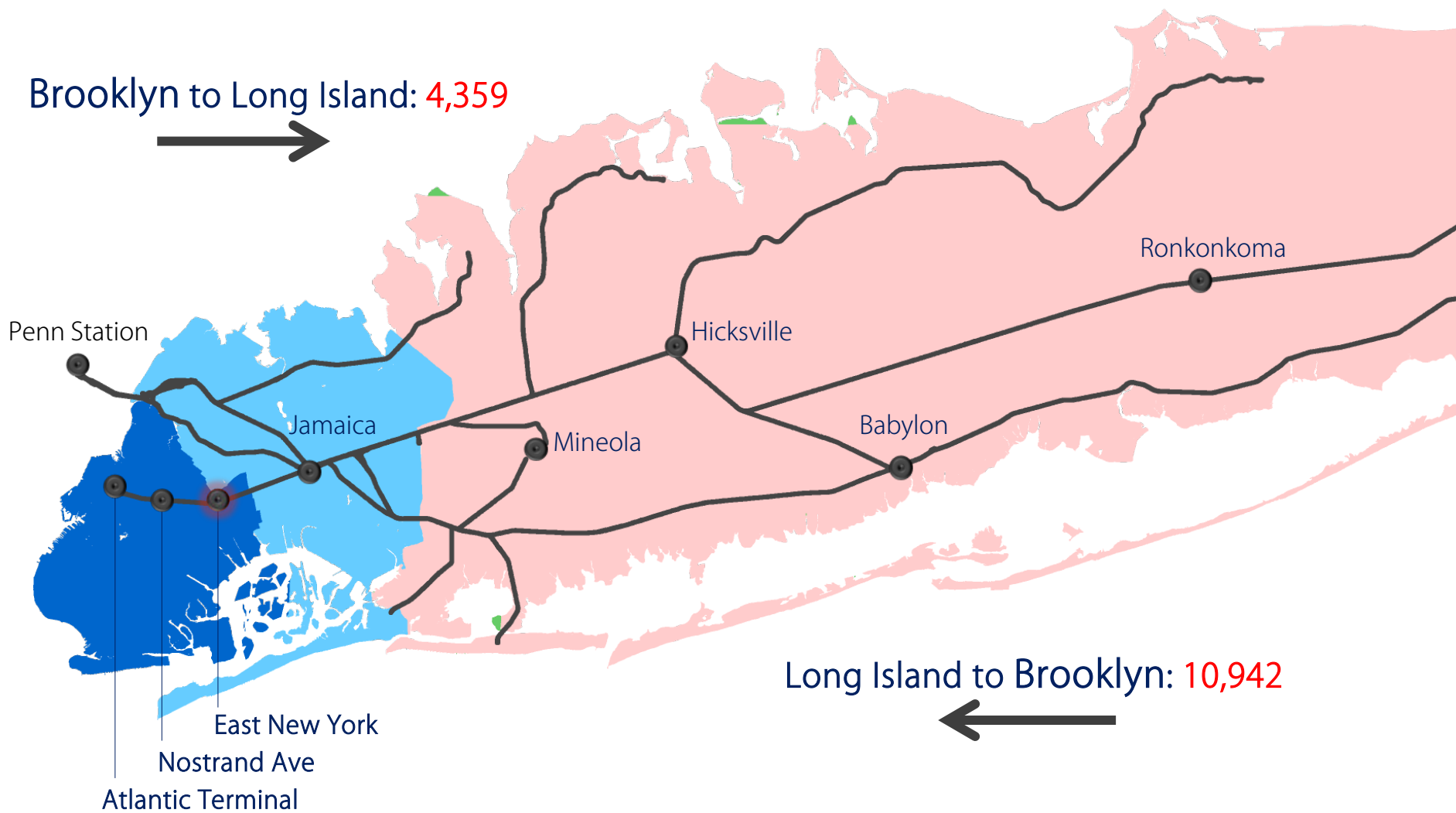
- 70% use transit/other
- 30% use a car to get to work



# Brooklyn LIRR Connections

Weekday AM peak commute

Brooklyn to Long Island: 4,359



Long Island to Brooklyn: 10,942

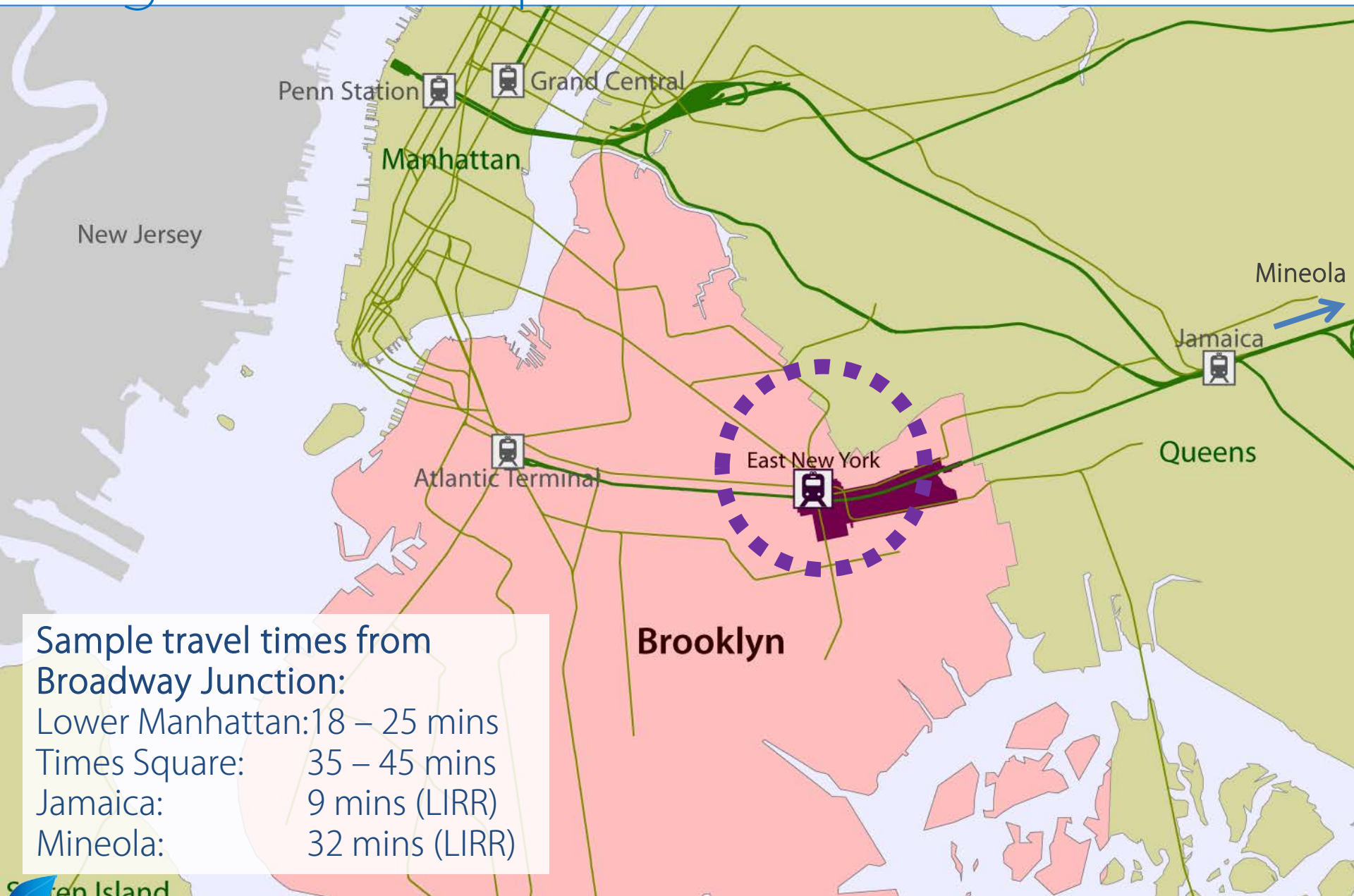


Data Source: MTA Long Island Railroad Passenger Counts 2006

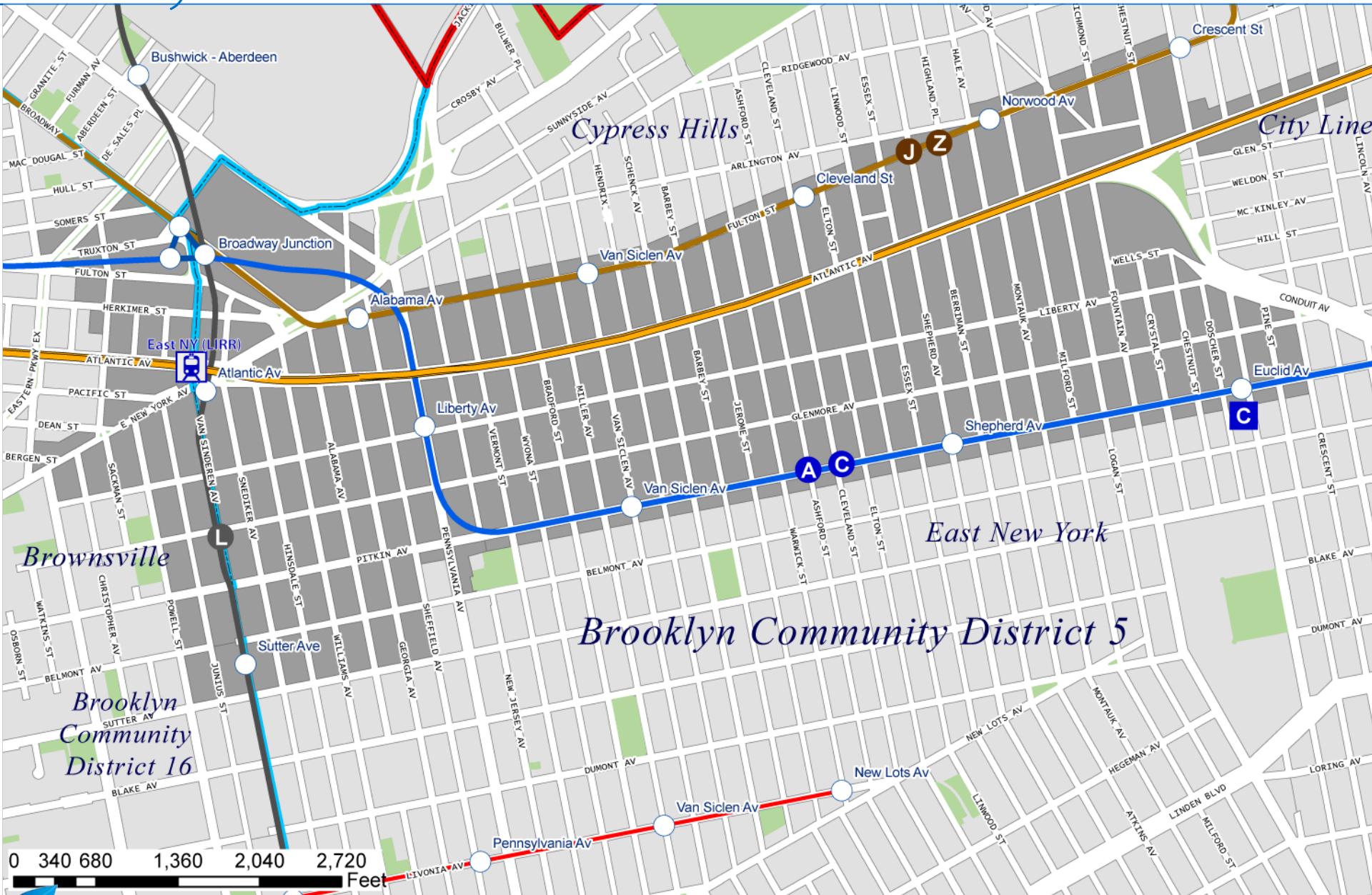




# Regional Transportation



# Study Area





## Our goals for achieving a greener, greater New York

- ✓ Housing and Neighborhoods
- ✓ Transportation
- ✓ Parks and Public Space
- ✓ Energy
- ✓ Brownfields
- ✓ Air Quality
- ✓ Waterways
- ✓ Solid Waste
- ✓ Water Supply
- ✓ Climate Change



Graphic: City of New York: <http://www.nyc.gov/html/planyc2030/html/publications/publications.shtml>



# Goal

Coordinate land use planning with transportation and sustainability objectives



# Objectives

1. Facilitate affordable housing opportunities through zoning changes and other targeted measures





# Objectives

## 2. Identify streetscape enhancements that can improve the physical environment





# Objectives

## 3. Improve access to job centers through better transit connections



Left picture: Wally Gobetz via Flickr: <http://www.flickr.com/photos/wallyg/6287800380> Licensing information at <http://creativecommons.org/licenses/by-nc-nd/2.0/deed.en>

# Objectives

4. Improve access to fresh food and retail services through FRESH and other programs





# Objectives

5. Improve the area's environmental performance by promoting building retrofits and implementation of “green measures”

