

Small Group Discussion

Para escuchar en español, llame al
646-558-8656 y marque el código
571 249 1722

Welcome to our Small Group Discussion

Instructions for optimal attendee experience:

- Now is the time to turn on your video and mics if you're comfortable doing so
- Use the chat to ask questions/provide feedback
- Side by Side view

Online Conversation Etiquette:

- Mute yourself when you're not speaking to help prevent background noise.
- Listen to each other with respect.
- Each person gets a chance to talk.
- One person talks at a time: don't cut people off.
- Speak for yourself, and not as the representative of any group.
- If you are bothered by something that was said, say so and say why.

Turn your mic and video on/off here
Please mute when the meeting begins

Ask questions during the presentation here



Morris Park Remote Workshop
Small Breakout Group - Room 1

Vibrant Communities

Vibrant communities relates to how we can plan for growth while celebrating who we are.

1. Create a neighborhood center that supports transit-oriented development, area institutions, and job growth
2. Encourage welcoming public connections throughout the neighborhood
3. Ensure easy and comfortable access to the station from the east and west
4. Preserve existing housing and allow for new housing for a range of incomes and housing types
5. Create new open spaces and improve and better connect to existing ones
6. Promote fair transit-oriented development that benefits all residents
7. Support the area's diverse and growing immigrant communities
8. Make healthy food options available
9. Honor the area's history and promote public art
10. Meet added demand for schools, police and fire service, and other basic services

Vibrant Communities

Vibrant communities relates to how we can plan for growth while celebrating who we are.

Physical Improvements

- 27% 1. Make it easier and more pleasant to walk and move throughout the neighborhood
- 19% 2. Make new stations a part of the neighborhood, accessible from the east and west
- 24% 3. Create and improve open spaces and better connect to existing ones
- 16% 4. Meet added demand for schools and other public services

Policy Improvements

- 28% 1. Ensure everyone can enjoy the benefits of new development around the station
- 30.5% 2. Make healthy food options available
- 25% 3. Preserve housing affordability for existing communities and grow new housing for all incomes and ages
- 5.5% 4. Support the area's diverse and growing immigrant communities

Morris Park Station Area Overview



Quick Ice breaker

What is the most important thing about this new service and station coming to Morris Park?

Short answers :)

Excited about the station - good for Commerce, Bronx, Employees, companies looking to relocate to BX



Looking towards hearing everyone's thoughts!

High density housing opportunity - safe bus/bike lanes, green technology.

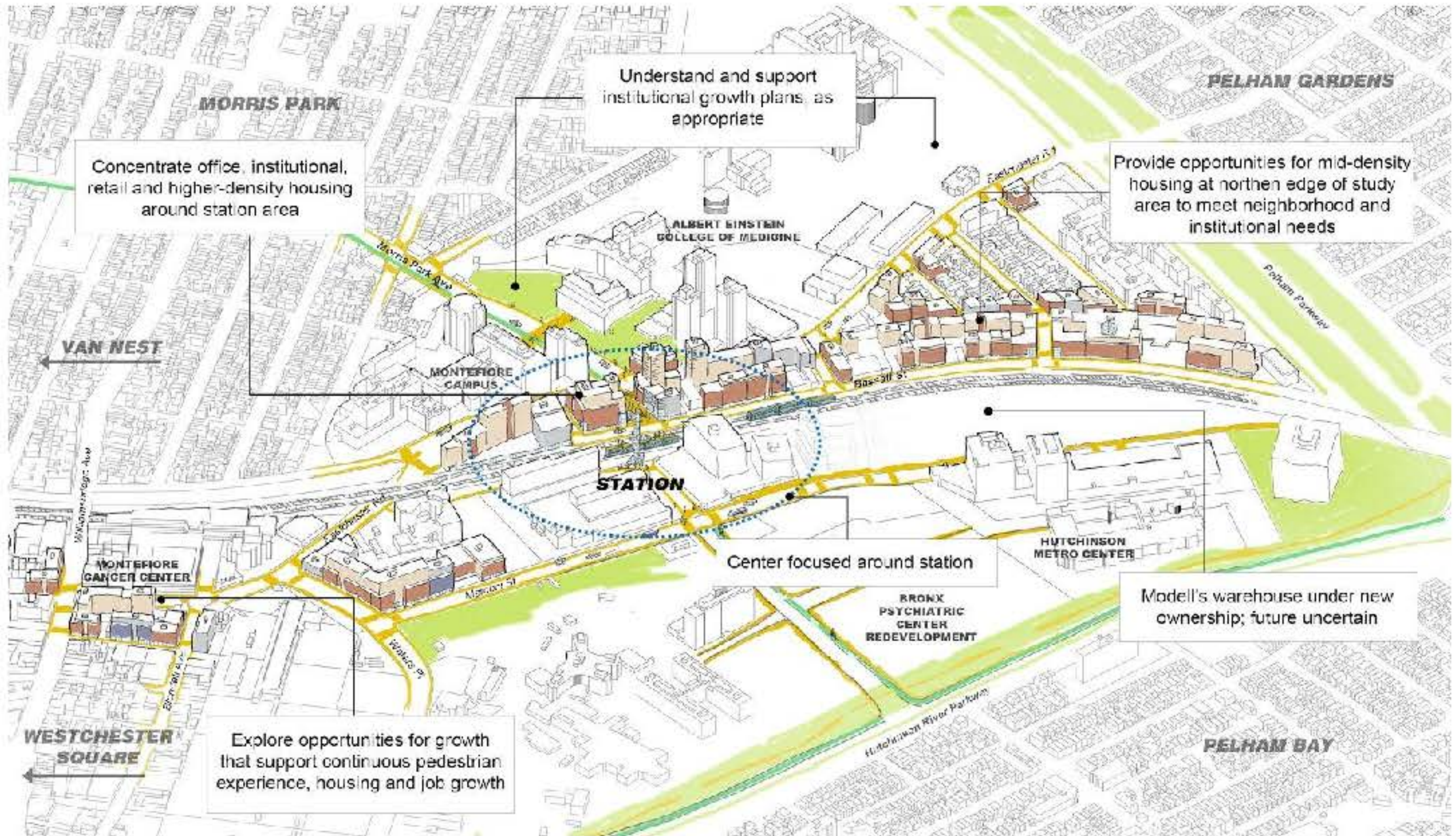
Excited for train stop in the area

Resident of MP area. Concerns on transportation needs

looking towards this to start soon with allocated funding.



Encourage the development of a mixed-use, pedestrian-friendly district around the future station



Concentrate office, institutional, retail and higher-density housing around station area

Understand and support institutional growth plans, as appropriate

Provide opportunities for mid-density housing at northern edge of study area to meet neighborhood and institutional needs

Center focused around station

Modell's warehouse under new ownership; future uncertain

Explore opportunities for growth that support continuous pedestrian experience, housing and job growth

The image on the left shows a vision for how the Morris Park station area might change in the future, including a mix of retail, housing, parks improvements, and better pedestrian connections.

How well does this image align with your vision for a Vibrant station area in the future? What works? What's missing?

Proximity of Hutchinson River Bikeway. Delicious Berries!! Maintain and amplify the greenway

Maintain and amplify green areas

Are there affordable homeownership? considering State collaborations

Need more access to Park land. Eg: Pelham park is great. Also access to 9/11 call center, mercy collage. Busy Marconi St, waters Pl

How will the station areas be rezoned? what are the future uses proposed?

New station will bring transit improvements

Concern around greenway being converted into a service road. This area needs more greenspace.

What in this image works for you? What doesn't?

Where else in the neighborhood should the city focus on improvements or additional park space? What park spaces do you most use today and why?



Morris Ave/Eastchester Road



Proposed Station

- As city bikes expand, where will it be located
- Healthy food Options- eg: grocery stores
- outdoor cafe/patio/food gathering space. Create a beautiful space!!
- Given the upcoming green infrastructure, can we recreate these spaces (Less cars)

- More spaces to cater the Einstein school students/workers
- Opportunity for Small businesses- more food choices
- Can we include POPs (privately owned public spaces) ?

- Add more pedestrian friendly spaces, improved streetscape
- Currently not efficient sidewalk, pedestrian crossing
- Prioritize bus lanes
- Pedestrian space for other things like Farmers Market, etc.

Is this the kind of environment you'd like for the future of Eastchester Rd? Are there other things you'd like to see that you don't see here? Are there things you would change?



Eastchester - Stillwell Road



Need for micro-mobility - Spaces for bikes (SAFE)

The roadway seems threatening for pedestrians. Need for raised crossing

Can we redesign the island for something else? can it be a T? Its hard to drive around here

HIGHLIGHTS

Access to healthy food options are needed

Maintain and look for opportunities for more green spaces/parks

New station will give residents a closer option to public transportation

A need for affordable homeownership opportunities

The station should feel like part of Morrispark. Need more integration.

Medical Institutions to be considered in holistic Plan

Need for seating, benches in public space. Streets for people!

Add open spaces for students/healthcare workers who work and study in the area

Can we make the crossing around station more easy

sufficient ADA access in the area (elevators, curb cuts, etc.)

could we conceptualize this area as the heart of the neighborhood?

Design the station area to fit the needs of pedestrians

Bike Lanes

We need safer spaces for micromobility

Morris Park Remote Workshop
Small Breakout Group - Room 2

Working Communities

Working communities relates to focusing on growing jobs and connecting Bronxites to them.

39% 1. Ensure Morris Park remains a vibrant and desirable place to live, work, and shop and that it is able to attract and keep workers

14% 2. Promote Morris Park as a key regional job center specialized in Health Care and Life Sciences

19% 3. Encourage the growth of Morris Park into a Life Sciences center along a regional corridor

Morris Park Station Area Overview



Need to help mitigate future traffic concerns as new stations come online

Connections btw Morris Park and Co op City are needed; Also a welcoming pedestrian and bike overpass; Overall connections are needed (east-west)

 Station landing Area

Quick Ice breaker

What is the most important thing about this new service and station coming to Morris Park?

Short answers :)

**Add
here**

Transportation
connections and
creating a life
science hub

**Ensuring
safety and
security**



Jobs and Workforce

Morris Park is the largest jobs hub in the Bronx and job growth within the neighborhood outpaced Bronx's job growth (12% compared to 6%).

However, few people both live and work in the neighborhood. Most residents work in either the Bronx or Manhattan, commuting up to 46 minutes to reach their place of work. Most of the workers are coming from the Bronx followed by Westchester County and Queens.

Residents and workers are primarily employed in either health care, retail trades, or educational services.

The median earnings for the top three industries

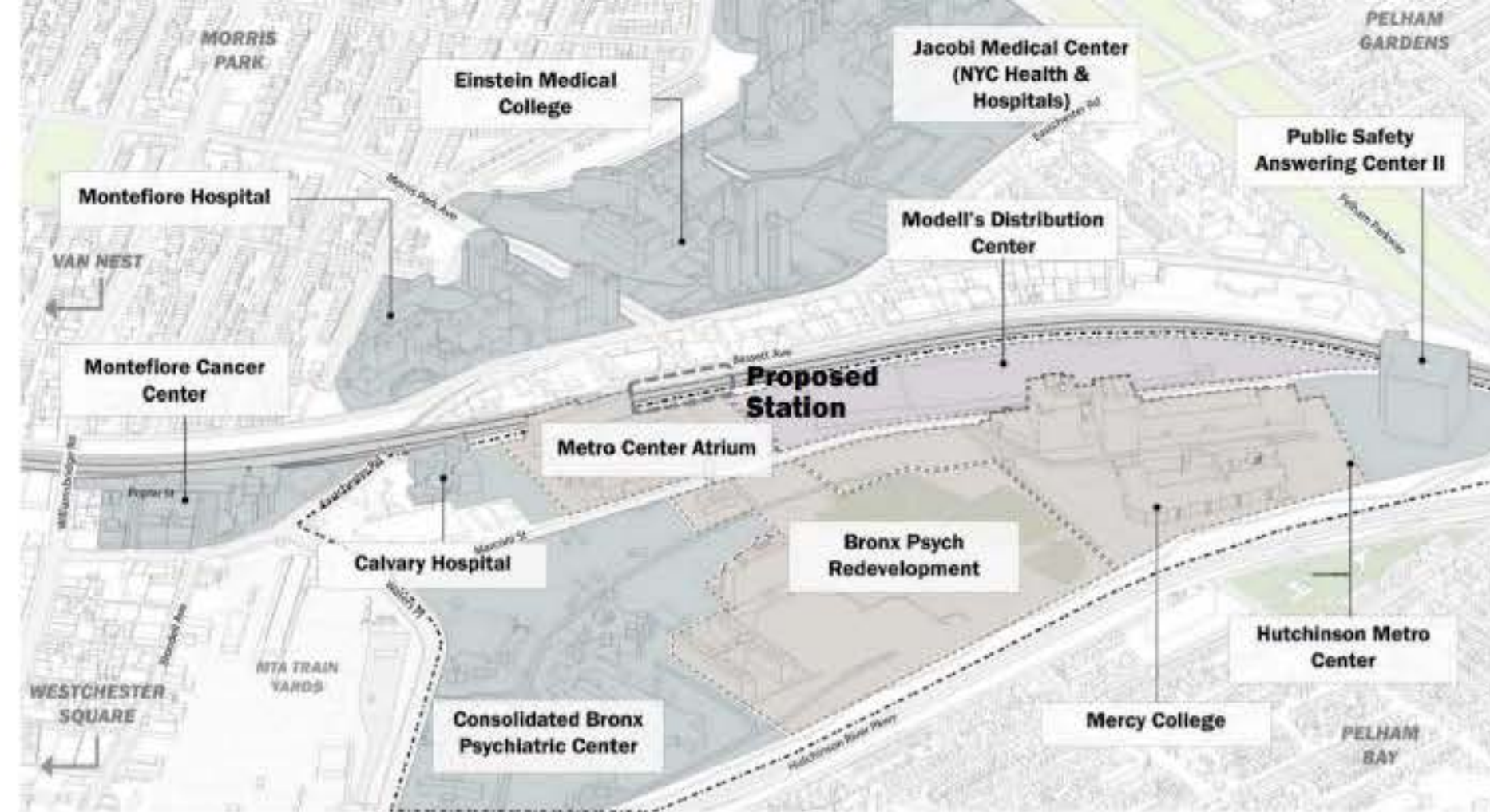
	 Health Care & Social Assistance	 Retail Trade	 Educational Services
RESIDENTS	<p>\$40,000 Median earnings (22% of total employment)</p>	<p>\$19,000 Median earnings (12% of total employment)</p>	<p>\$41,000 Median earnings (11% of total employment)</p>
WORKERS	<p>\$50,000 Median earnings (55% of total employment)</p>	<p>\$36,000 Median earnings (5% of total employment)</p>	<p>\$47,000 Median earnings (13% of total employment)</p>

Jobs for Future : Lifesciences R&D

Entry level medical and biological jobs pay between \$40K and \$50K

Training and certification programs enable advancement to technologist or supervisor positions with higher salaries upwards of \$100K

WORKING COMMUNITIES



How do you think the new service will affect your decision about where to work and where to live?

with overall safety and sidewalk conditions; Marconi abandoned smokestack; baseball field in poor condition; Rehab facility located in close proximity to school - outreach is needed; flooding

Add Comments

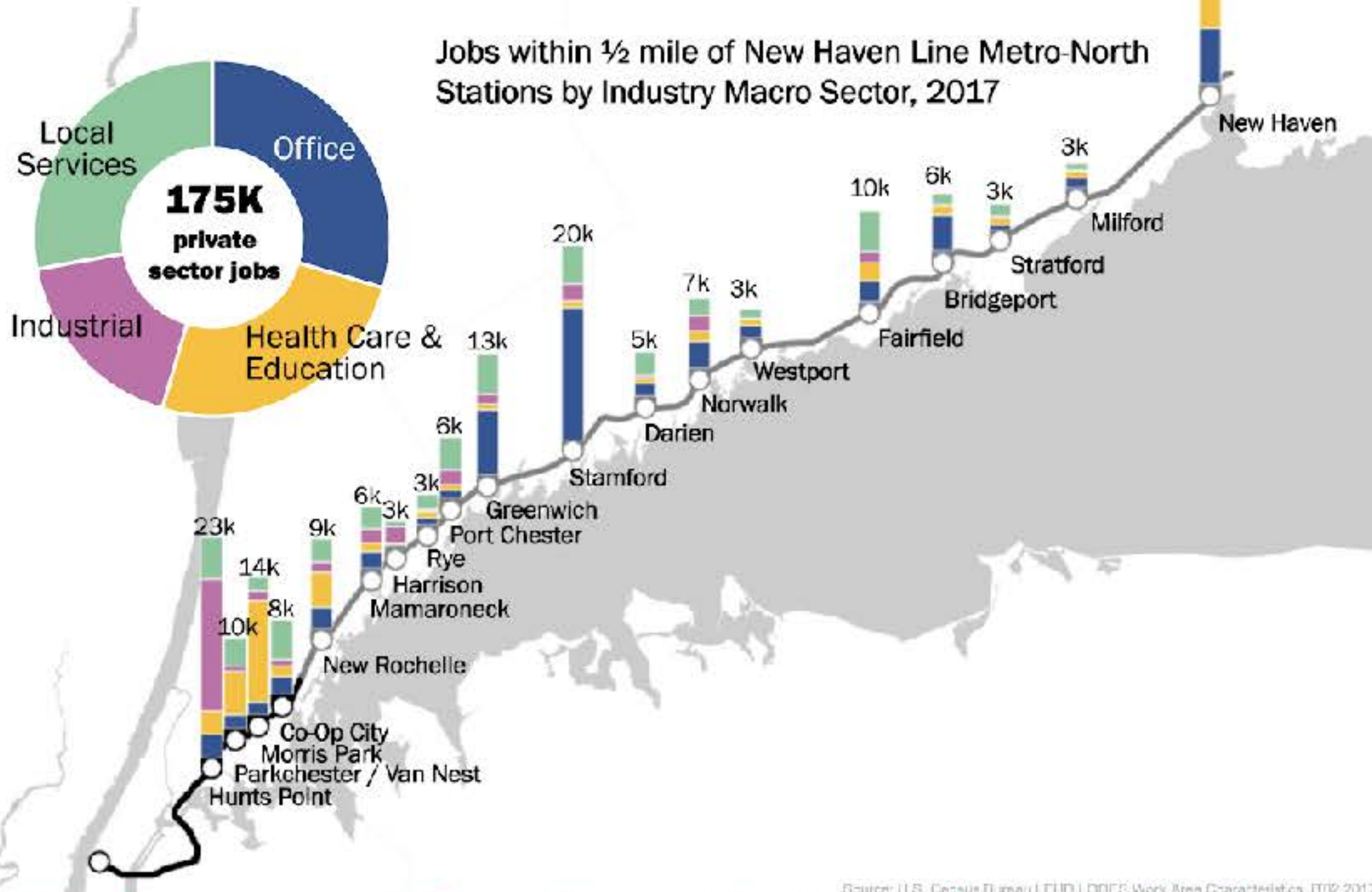
Add Comments

What are the barriers to getting these jobs? Does anyone here work in the local jobs centers?

barrier to entry for employment has come up at CB 9

Add Comments

The New Haven Line has nearly as many jobs as St. Louis



What other opportunities does new access open up for you and your family?

Add Comments

Increased N-S connections (btw the Bronx and CT, and the Bronx and Manhattan)

Increased transit options may foster cross-collaboration across different research and life science institutions

Does anyone here today work at these centers?

New service may present alternative connections between Stamford and the Bronx

any of these jobs

Add Comments

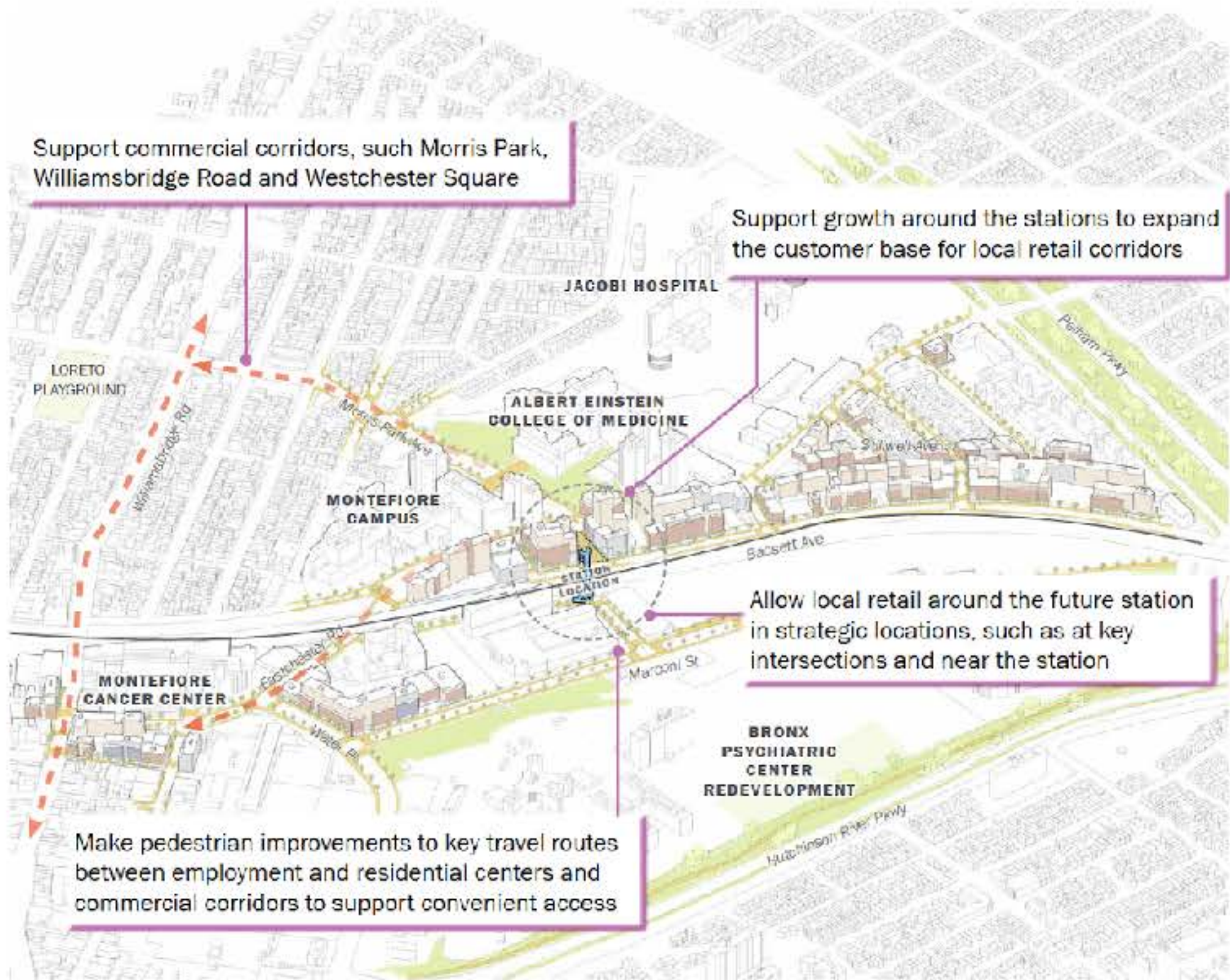
Does anyone here work at Hunts Point today? What might this mean for connections?

Add Comments

Add Comments

Supporting local businesses and jobs growth

OBJECTIVE: Understand the needs of existing small businesses and identify tools to support them



Question for residents:
Have you participated in any workforce development/professional/training programs in your neighborhood or elsewhere? If so, what were they?

What workforce development programs would you like to see in the neighborhood?

Add comments

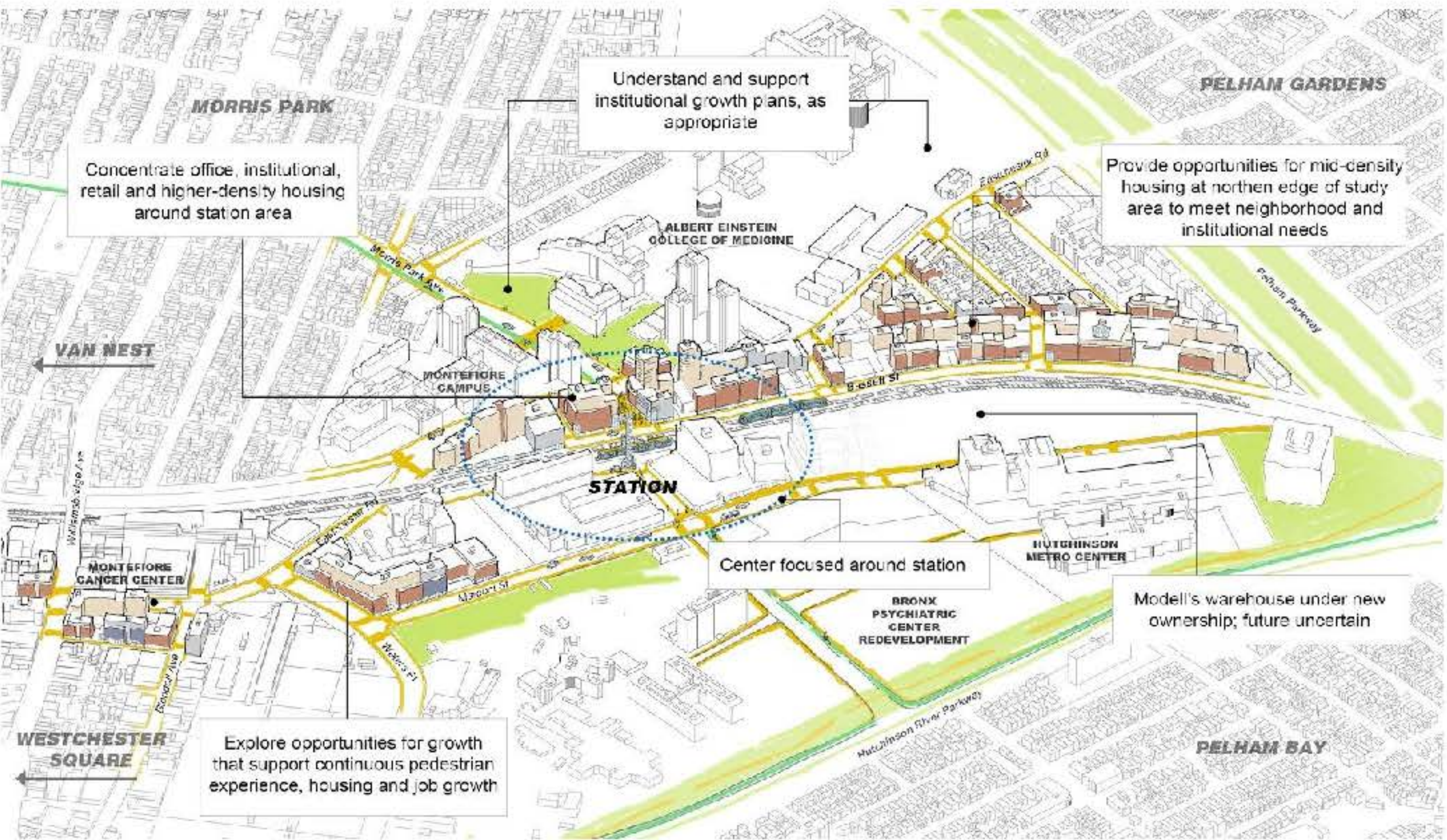
Add comments

Add comments

businesses / development; Prefer to see smaller and more local retail at the ground floors (example of bigger box stores going on upper floors); Encourage streetscape vibrancy- especially on the

The LIRR station in Forest Hills Queens is an area that can be used as a model in how to balance "mom & pop" stores and big box chains.

Encourage the development of a mixed-use, pedestrian-friendly district around the future station



Concentrate office, institutional, retail and higher-density housing around station area

Understand and support institutional growth plans, as appropriate

Provide opportunities for mid-density housing at northern edge of study area to meet neighborhood and institutional needs

Center focused around station

Modell's warehouse under new ownership; future uncertain

Explore opportunities for growth that support continuous pedestrian experience, housing and job growth

The image on the left shows a vision for how the Morris Park station area might change in the future, including a mix of retail, housing, parks improvements, and better pedestrian connections.

How well does this image align with your vision for a Vibrant station area in the future? What works? What's missing?

Add comments

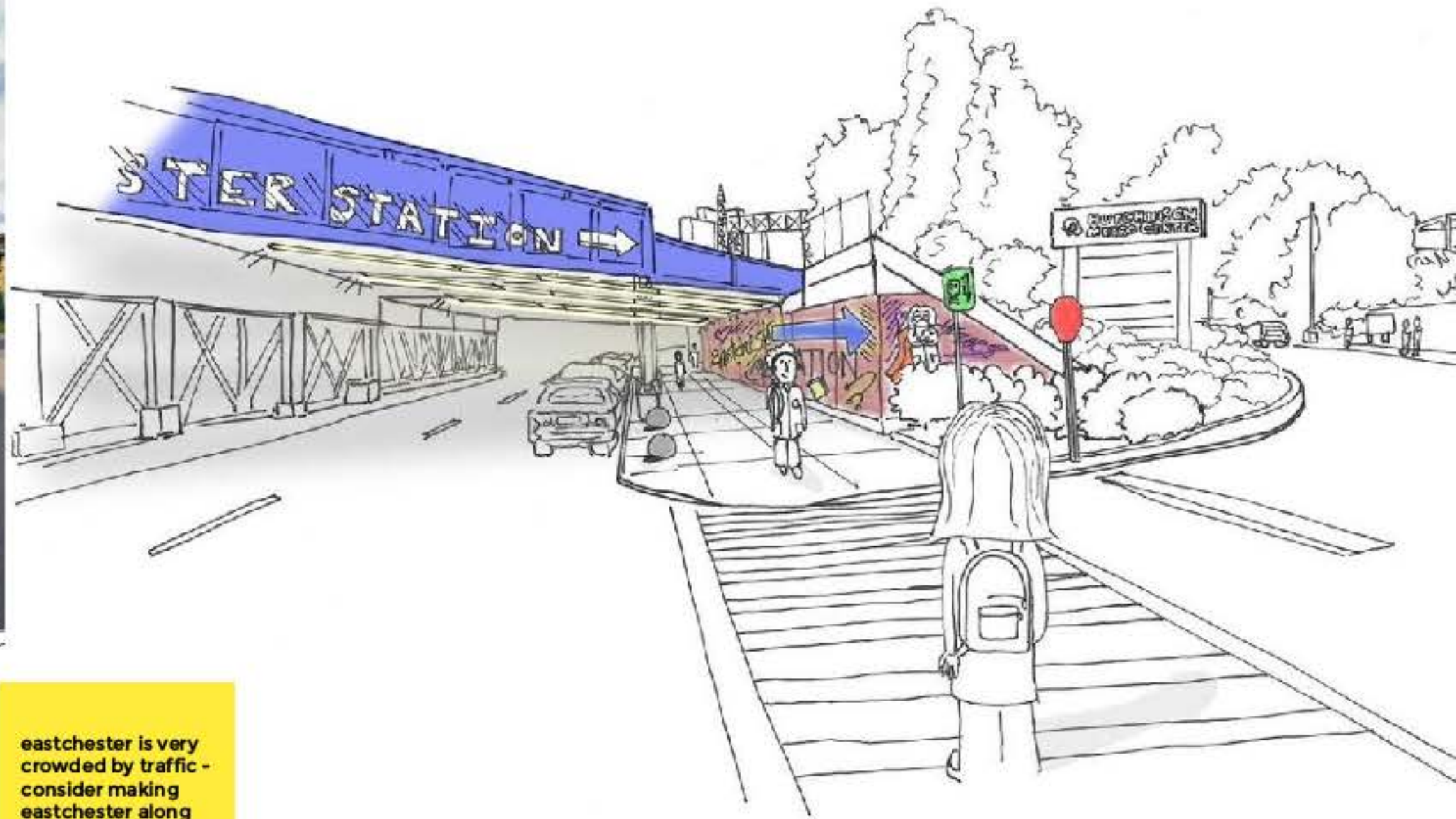
Add comments

Concerns regarding new housing being balanced with traffic mitigations + other investments + other amenities (retail, open space, etc)

We have heard a lot about the pedestrian and bike safety and this intersection of Eastchester Road. Here are some potential improvements. Are these the right improvements? Where else in the neighborhood are these needed?



Eastchester Ave



eastchester is very crowded by traffic - consider making eastchester along tracks more pedestrian-oriented

Add Comments

Add Comments

Add Comments

Add Comments

Yellow:
Transportation;
Pink: Public
improvements /
concerns; **Blue:**
Commuting &
Connection; **Green:**
Retail; **Orange:**
Housing

HIGHLIGHTS

**Marconi --
abandoned
smokestack
that needs
attention**

**Rehab center
-- people have
tremendous
need and this
needs to be
addressed**

**Make the road along
the train tracks a
pedestrian area,
with small scale
retail**

**Track facing sides
more amenable to
small businesses;
Eastchester has too
much through traffic
its not an inviting
place; train station /
retail center would be
nice**

**The trainyard on
Waters Pl. doesn't
look visually
appealing.
Sidewalks are in
need of
improvements.**

**Safety and
security
concerns;
ensure ease of
traffic
patterns**

**Eastchester Rd. bridge
gets flooded with lots
of rain and should be
addressed. There had
been construction
there for a while, but
it doesn't seem to
have been fixed. (It is
a gateway into the
area, so it's a big
priority.)**

**Significant
workforce that lives
in Co-Op City that
commute westward
and southward; two
stations between
them could be
significant for them**

**Having the option to
utilize public
transportation to
get to work, where I
didn't before, would
be great (reverse
commuting)**

**would like to see
much smaller retail
spaces on the ground
floor. Like the LES
Target upstairs and
Trader Joe's
downstairs, but with
mom and pop on the
ground floor, which
makes it more
inviting; place you
want to hang out.**

**Additional housing
has to come with
public
improvements, such
as open spaces**

**A pedestrian
overpass to connect
the east/west would
be ideal for
pedestrians and
bikes and to
mitigate driving**

**Reconsider whether
to build parking at
the stations. Not
much parking on
the street**

**Need
additional
ways to
access the
Hutchinson
Metro Center**

**Thrilled to be able to
collaboration with the
other universities and
institutions along the
rail line and hope to
continue working
with them. Utilize the
brain trust**

**Knowing that there's
an incredible amount
of research
happening; there's an
expectation that the
physical ability of
being closer to each
other by transit could
allow people to think
about relocating and
greater collab**

**Enjoy all the
restaurants on Morris
Park Ave. Concern is
looking around the
Bronx, the scale of
new developments all
at once -- big box, fast
food doesn't foster a
sense of community
when you visit them**

**What's the
relationship
between new
housing
developments and
traffic? How will we
mitigate that?**

**Expanding
bike share and
other
alternatives to
driving.**

**Transportation
improvements
crucial; both east
and west access.
Focus on creating
hub for life sciences**

**Traffic on Waters Pl. is
already very
challenging; how will
we address that
through this project
to improve access to
the train station and
make the driving
experience better for
residents.**

**concerns about
accommodating
new parking on
narrower streets like
Basset. Is municipal
parking or other lots
an option?**

**make sure there is
sufficient ADA
access (elevators,
curb cuts, etc) ;)**

**Incorporate
into zoning to
have the
smaller retail
on the ground
floor**

**Addressing our
concerns will help
grow the residential
population of the
neighborhood**

Morris Park Remote Workshop
Small Breakout Group - Room 3

Connected Communities

Connected communities relates to how people get around the neighborhood, the city and the region.

48% 1. Make it easier to walk or bike to the station, transit, retail, and area campuses

21% 2. Ensure that major corridors are safe, well-lit, and offer pleasant pedestrian experiences

21% 3. Understand existing traffic conditions and transportation needs in the area and develop a comprehensive set of recommendations to support future growth and the new station

4. Improve way finding to area institutional campuses and community resources

Morris Park Station Area Overview



Quick Ice breaker

What is the most important thing about this new service and station coming to Morris Park?

Short answers :)



**no more
sitting in
traffic**

**new
development
the station
will bring**

**access
to jobs**

**better access
to the city and
commute to
work**

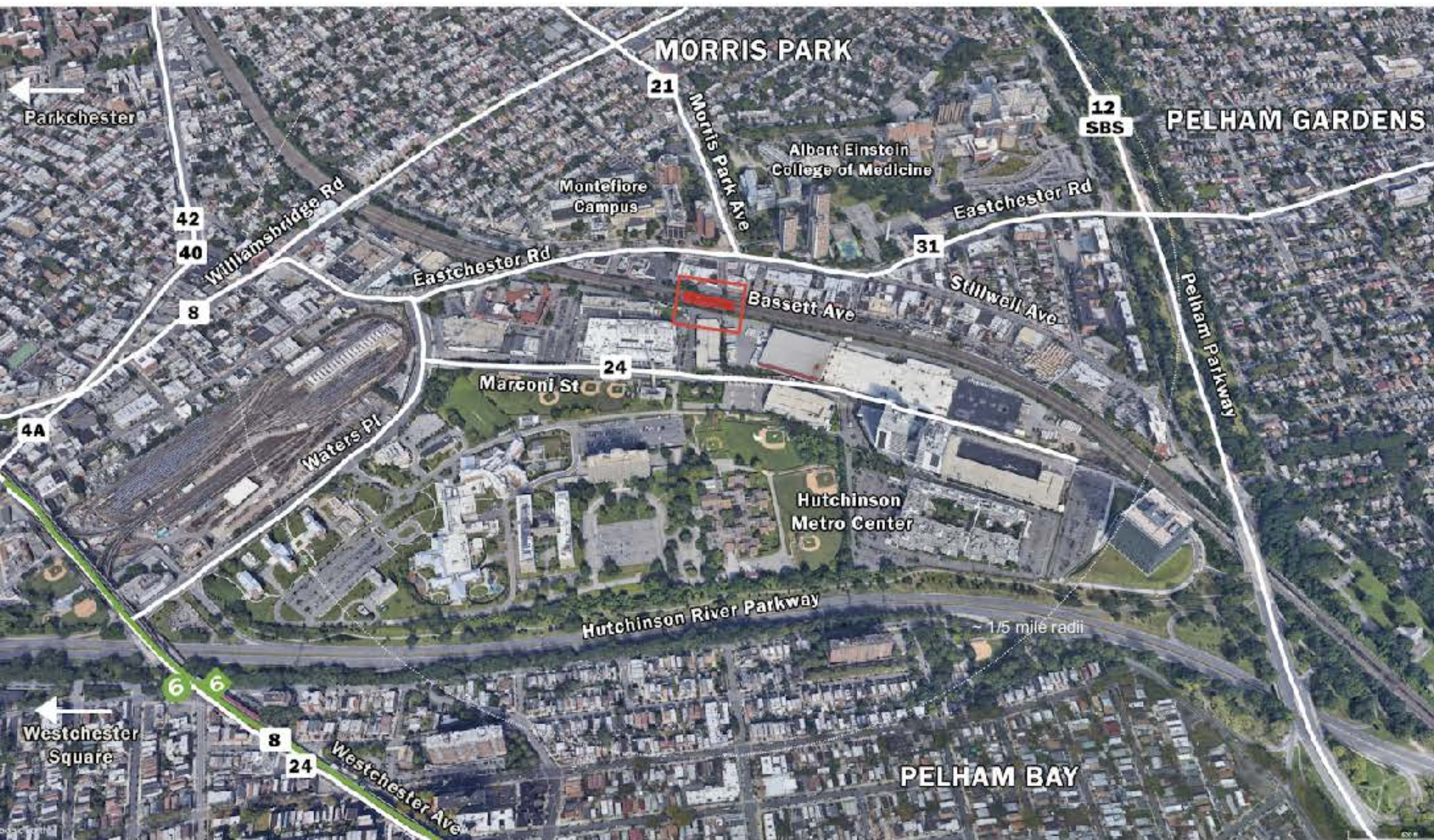
**make the
area more
attractive**

**more people that
work in Manhattan
will look for homes
in this area - realize
Bronx is beautiful**

**currently long
commutes
(2hr with bus),
shorter
commute will
be better**



Morris Park Station Area Overview



How do you get around the neighborhood and the city today?

- BX M10 or #5 subway**
- walking around**
- bike, subway, BXM10**
- family - bus or subway (subway difficult for stroller with stairs)**

How might you get around if there were other options? Would you bike? Take scooters?

- ferry options in close areas**
- E-scooter option, no bike**

The closest ferry station is the Soundview Ferry Terminal, ~3 miles away

Pedestrian and Bicycle Access

Pedestrian passageways



What are the biggest barriers to being able to walk around the neighborhood today?

walking to metro centers is a hike

track and lack of pedestrian crossings over tracks

safety and making sure area is well lit

lots of construction

litter and trash on streets

crosswalk positioning near mechanic and station area to be straight path

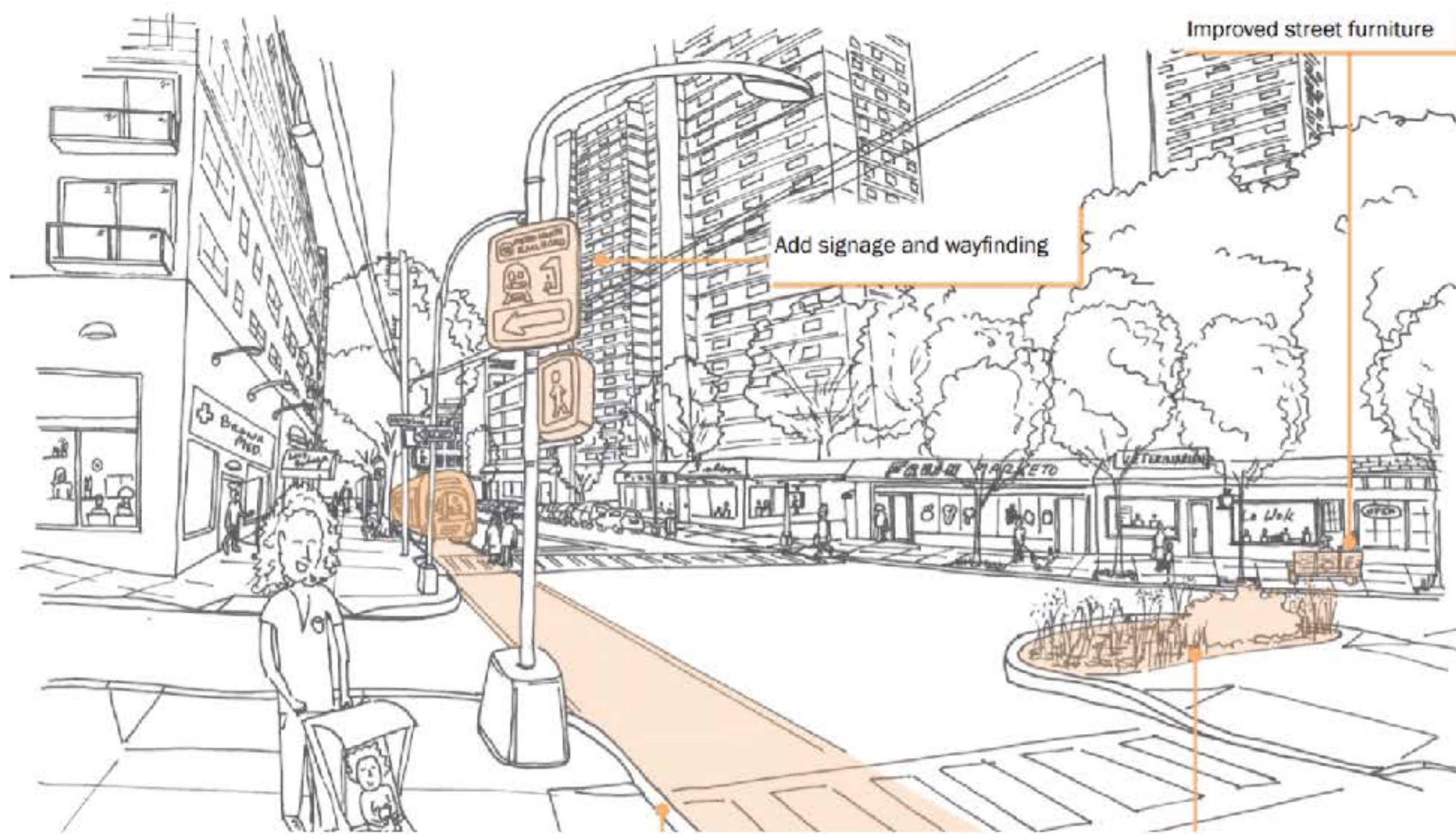
mental facility in the area of concern

re-align intersection instead of return to past design

Pedestrian and Bicycle Access

Pedestrian passageways

What are the biggest barriers to being able to walk around the neighborhood today?



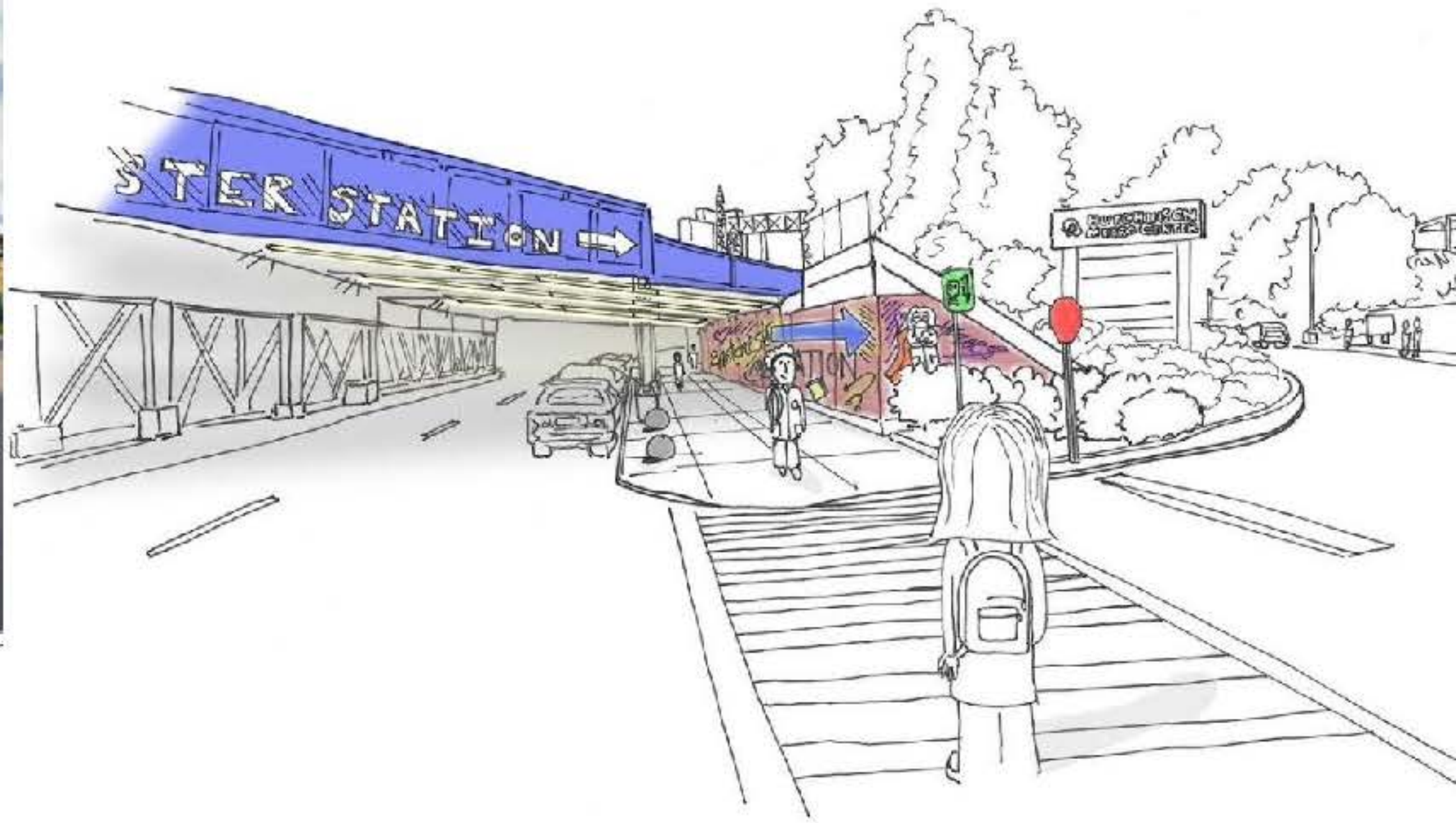
Add comments here

Add comments here

We have heard a lot about the pedestrian and bike safety and this intersection of Eastchester Road. Here are some potential improvements. Are these the right improvements? Where else in the neighborhood are these needed?



Eastchester Ave



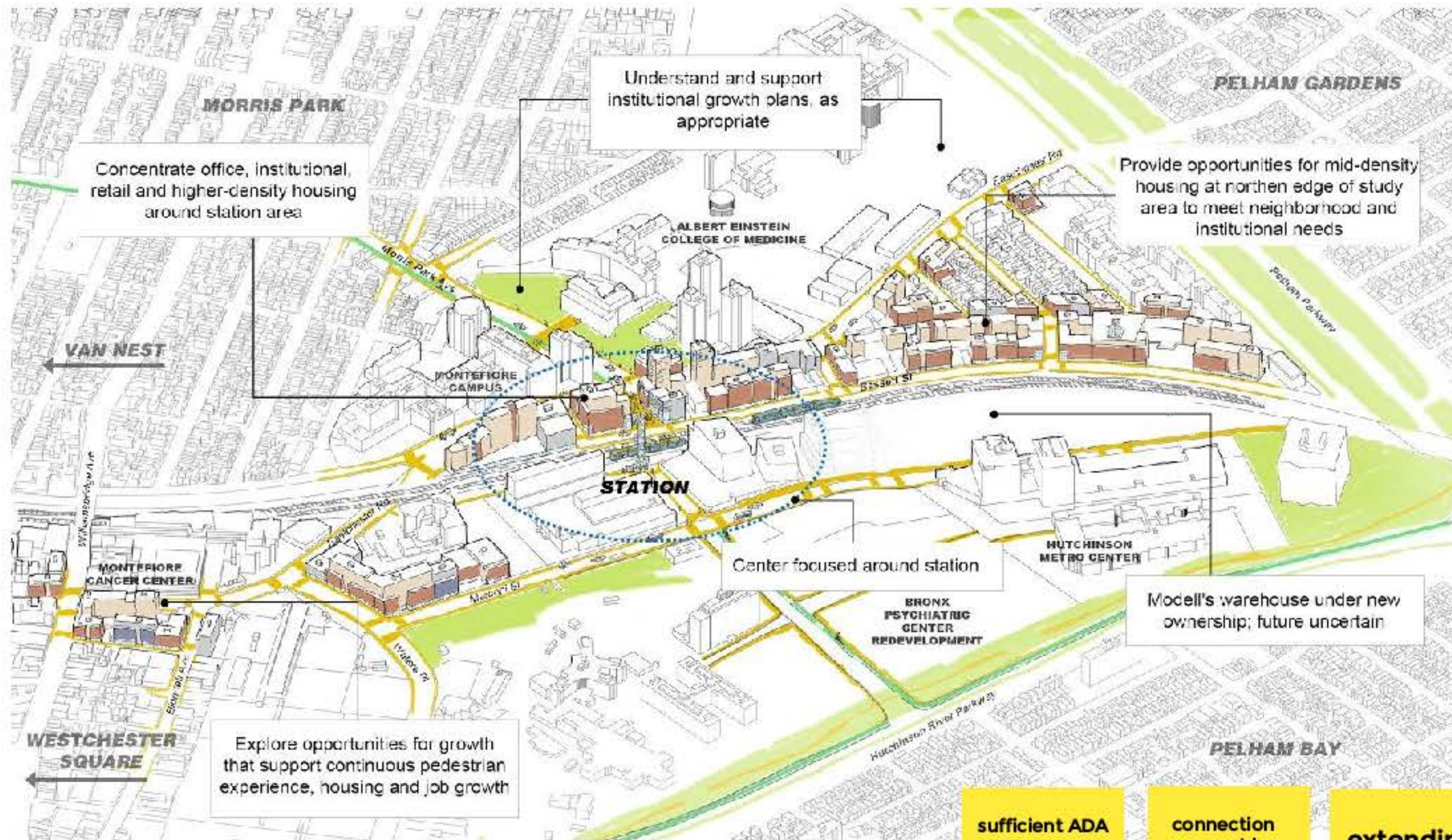
improve cleanliness, dumping and trash pickup happens here

lighting

improve sidewalks and connectivity

sidewalk on Basset could be improved depending on pedestrian volume

Encourage the development of a mixed-use, pedestrian-friendly district around the future station



The image on the left shows a vision for how the Morris Park station area might change in the future, including a mix of retail, housing, parks improvements, and better pedestrian connections.

How well does this image align with your vision for a Vibrant station area in the future? What works? What's missing?

- happy to see more density, would be happy with 30 story
- desperately need more housing
- prefer new neighbors to the area, more lively!
- really is transit oriented development
- still remaining bus services and bike still in reach to area
- encourage a lot less parking
- plaza space in front of station, best to close off street to traffic
- taxi area better on Basset
- sufficient ADA access (elevators, curb cuts, etc.)
- connection may not be necessary to Pelham Parkway
- extending Basset avenue

HIGHLIGHTS

Goals and getting around

Looking forward to reduced commute times and better access to jobs

Get around the neighborhood by walking or biking and look forward to scooter and potential ferry service in the future

Barriers to Pedestrians and Cyclists

Tracks are barrier to reaching Hutch Metro Center by foot -- Station will facilitate pedestrian overpass to Hutch Met center

Safety, lighting, litter, and construction impede pedestrian activity

crosswalk obstructed by mechanic - should be realigned

mental health facility also of concern

Needed Infrastructure Improvements

Stop illegal dumping

Improve lighting below underpasses

Widen sidewalks and improve connectivity to station area

Station Area Improvements

Increase density and housing to enliven area

Reduce parking

Create plaza at Morris Park Avenue in front of station

Extend Bassett Avenue and move taxi area there

Appendix

OBJECTIVE: Understand existing traffic conditions and transportation needs in the area and develop a comprehensive set of recommendations to support future growth and the new station to help the area retain a competitive edge

