

# Recommendations

---

Safety & Security Committee

June 16, 2022



# Agenda

---

- **Introduction**
- **Survey Results**
- **Recommendations**
- **Conclusion**

# Mission Statement

---

## Dictionary Version:

The condition of being safe from undergoing or causing hurt, injury, or loss

- The quality or state of being secure: such as
- **a:** freedom from danger : SAFETY
- **b:** freedom from fear or anxiety

## Safety & Security Mission Statement:

Safety and Security means working in conjunction with residences on keeping families and communities free from endangering conditions.

In addition, providing safety and security for all residents through modernization.



# Survey Questions

---

# Outreach Methods

---

- **Door to Door:** Committee Members went to apartments within their neighborhood portfolio and asked tenants to fill-out a survey.
- **Tabling & Lobbying:** Committee Members waited in the lobby of buildings within their neighborhood portfolio to speak with residents and encourage them to complete the survey.
- **Flyers with QR Codes:** Committee Members posted flyers in the lobby with QR codes in 5 different languages.
- **601** residents were surveyed between November 2021 – May 2022.



## Survey Questions

---

- **Do you feel safe in your building or neighborhood?**
- **What can NYCHA do to make you feel safe in your development?**
- **What are you most afraid of?**
- **How much would you be willing to pay monthly to help keep your family and development safe? (Example: Patrol Officers)**

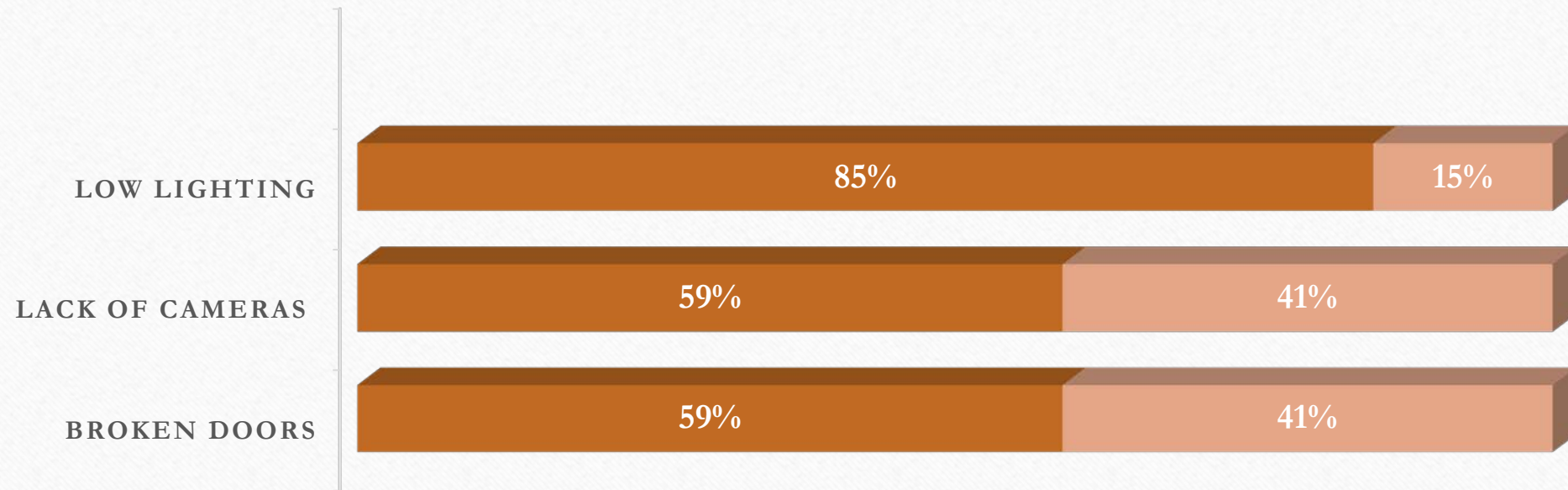
## *Do you feel safe in your building or neighborhood?*

---



# *What are you most afraid of?*

---

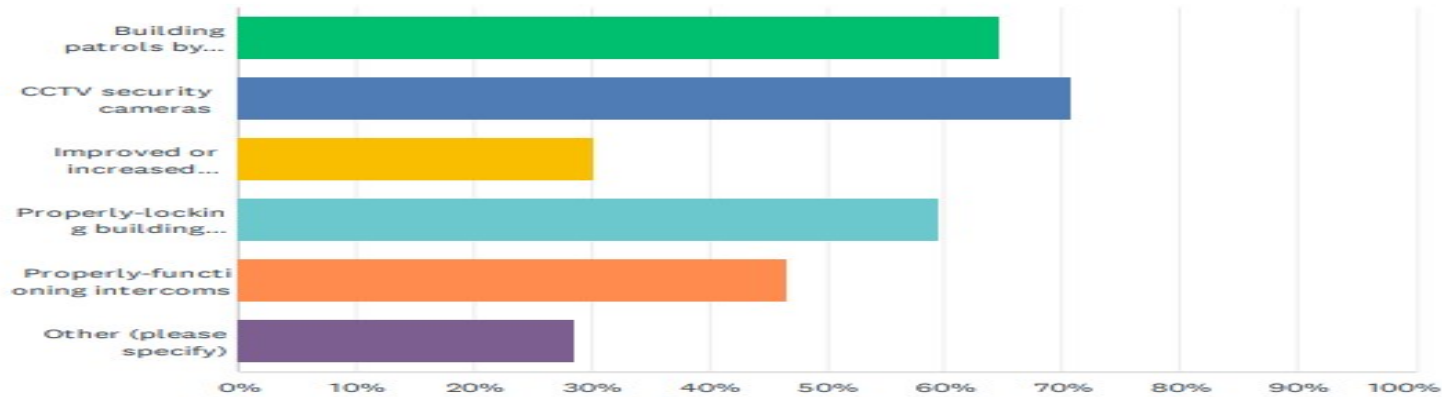




# Roundtable Survey

**Q11 What safety and security measures would help you to feel safe at your development? (Select the top three.)**

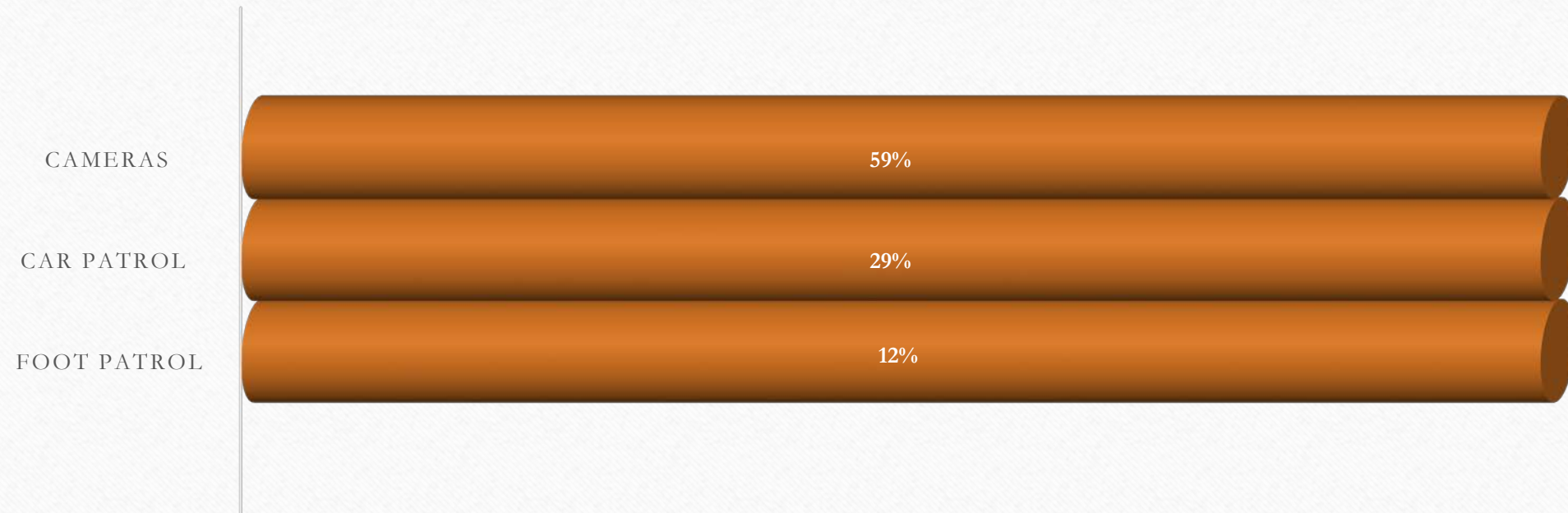
Answered: 333 Skipped: 62



ANSWER CHOICES	RESPONSES	
Building patrols by police or security guards	64.56%	215
CCTV security cameras	70.87%	236
Improved or increased lighting	30.03%	100
Properly-locking building entrance doors	59.46%	198
Properly-functioning intercoms	46.55%	155
Other (please specify)	28.53%	95
<b>Total Respondents: 333</b>		

# *What do you want done to feel safe?*

---





# *Do you feel safe in your building or neighborhood?*

## *Results*

---

- The survey has determined that the majority of NYCHA residents do not feel safe living in their development.
- **Reasons for feeling unsafe:**
  - Broken lobby doors
  - Low lighting
  - Lack of cameras
- **This scenario allows:**
  - Criminals to commit various crimes
  - Illegal sales of substances
  - Presence of scaffolding creates cover of darkness

*How much would you be willing to pay monthly to help keep your family and development safe?*

---

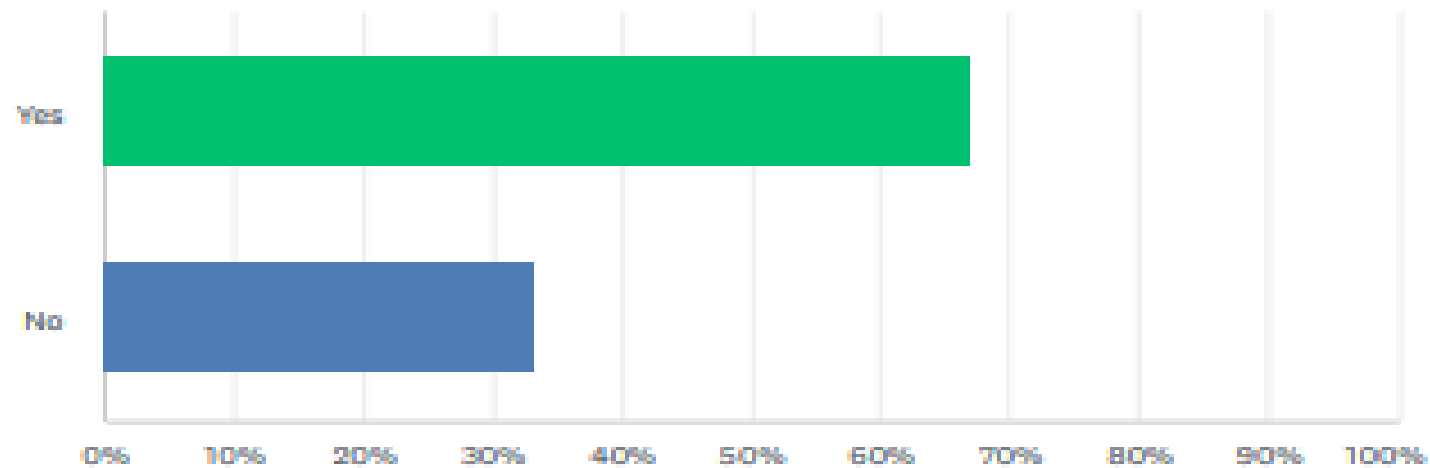
**Results:**

- Residents are opposed to paying for security while living in NYCHA.
- Residents have expressed it is NYCHA's responsibility to pick up the cost for to ensure tenants safety.



# Q12 Would you be willing to pay an optional service fee (similar to the air conditioning fee) for enhanced security features at your development (e.g., security guard, video doorbells, etc.)?

Answered: 333 Skipped: 62



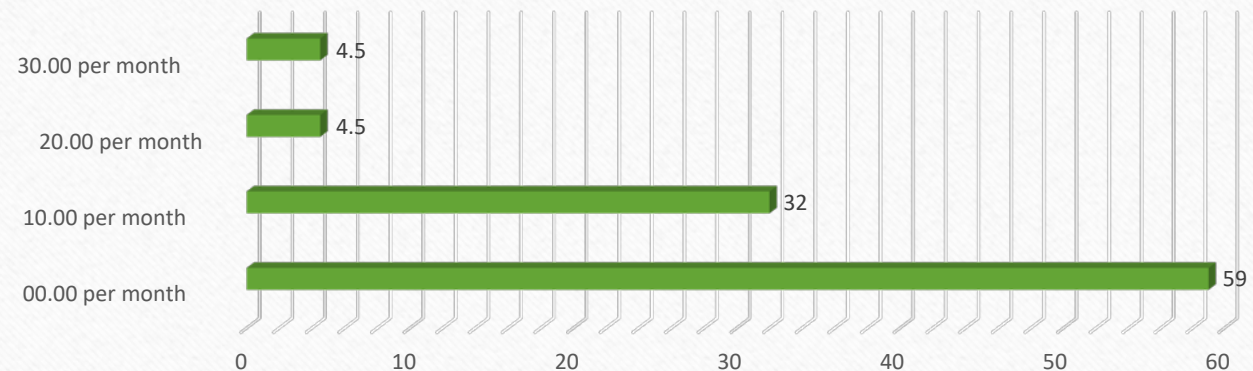
ANSWER CHOICES	RESPONSES	
Yes	66.67%	222
No	33.33%	111
TOTAL		333

# NYCHA Tenants Willing To Pay

How much would you be willing to pay monthly to help keep your family and development safe?

## WILLING TO PAY FOR SECURITY

- 5% Will pay \$30
- 5% Will pay \$20
- 32% Will pay \$10
- 59% Will pay \$0





# Recommendations

---

**The Safety & Security Committee recommend that NYCHA implements:**

- Intercoms with cameras be installed in each building entry door.
- Cameras be installed on the outside of the buildings and in the stairwell of each building as well as on the side of the buildings and in the alley.
- Consistent foot patrols at buildings.
- Car Patrols of developments during the evening hours.



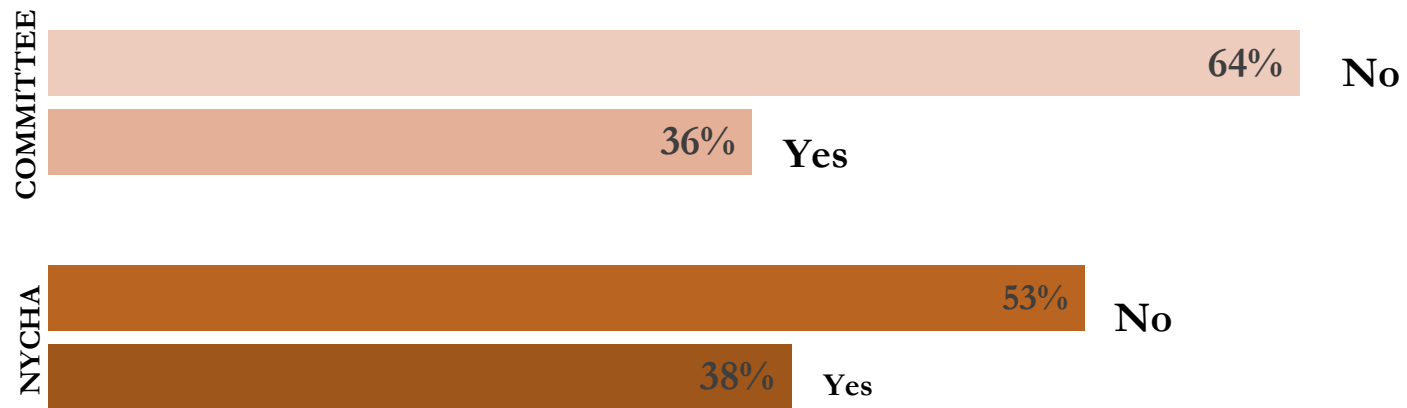
# Committee Survey Numbers VS NYCHA

---



## Committee Survey Numbers VS NYCHA

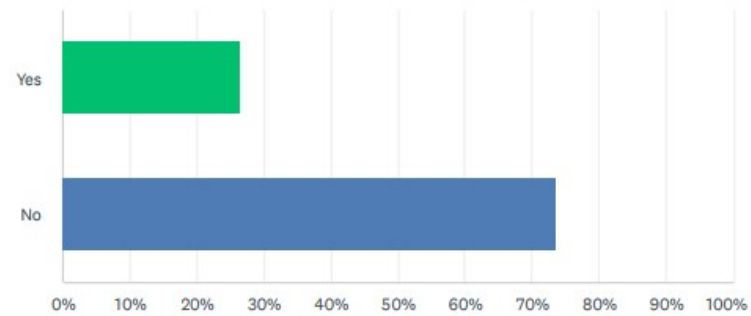
### Do you feel safe in your Development? Comparison Numbers



# Roundtable Survey

Q9 Do you feel safe in your development?

Answered: 333 Skipped: 62



ANSWER CHOICES	RESPONSES	
Yes	26.43%	88
No	73.57%	245
TOTAL		333



# Development Contact Website

---



# Development Contact Website Recommendation

---

When residents have concerns they should be able to email the office directly.

**Recommendations:**

- Develop a website with a functional maps with a list of developments
- Provide emails addresses and office phone numbers
- The sender should receive a conformation email or an acknowledgement email



# Recommendations

---

Security Firms

Doors and Locks

Intercom

Lighting

Parking



# Brosnan Security

---

## Brosnan Services:

- Brosnan Security provides **security services** and **guards in New York, NY**.
- Brosnan is **full-service** investigative, protective and intelligence firm to a global network of clients. Headquartered in New York City, with branch locations in multiple states.
- Brosnan is one of the **largest privately held** providers of technology-driven security services. With more than **26 years** of law enforcement experience.
- Brosnan understands the law, and more importantly, law breakers. We protect your people, property and assets for aggressive risk mitigation strategies and technologies.



# ADT Professional Monitors

---

- **Dome Cameras**

- View video in HD resolution, with true day/night viewing functionality and enhanced visibility range.

- **Bullet Cameras**

- Get enhanced visibility with a motorized varifocal lens, true day/night viewing functionality, autofocus and HD resolution.

- **Turret Cameras**

- Utilize motorized varifocal lens with enhanced visibility range, HD resolution and true day/night viewing functionality.

# Reliant Safety

---

## Reliant Offer the Following:

- Security system design
- **Camera**, access control, roof alarm,  
and **intercom installation**
- Security Operations Centers
- **Investigation Response Team**
- Virtual Building Management Assistant
- **Law Enforcement Liaison**





# NYCHA Safety and Security

---

- Recommendation:

**We recommend NYCHA design and implement its own modern security system**

# Door Specifications

---

- Half Glass Steel Door
- Thermal Insulation U-Factor
- Magnetic or Bolt locking system
- Fire Resistant Steel Doors
- Allows tenants to see through to the other side
- Automatic close
- Can be customized to open by forbit, or key



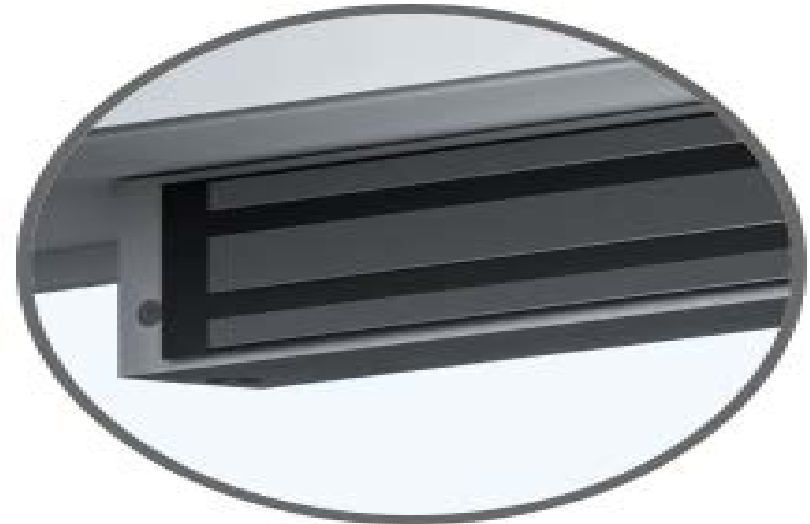


# Door Locks Recommendation

Electric Bolt Lock



Magnetic Lock



# Traditional Dome Cameras

---

- View video in HD resolution, with true day/night viewing functionality and enhanced visibility range.





# Non-Traditional Type of Cameras

---

## Bullet Cameras

- **Bullet cameras**
- Get enhanced visibility with a motorized varifocal lens, true day/night viewing functionality, autofocus and HD resolution.



## Turret Cameras

- **Turret cameras**
- Utilize motorized varifocal lens with enhanced visibility range, HD resolution and true day/night viewing functionality.



01-18-2016 Mon 23:33:46

56 R stairs  
56 R stairs



6-2016

Tue 01:56:43



# Real-time monitoring of your operations

---

- **Perimeter Security:** Keep an eye on your parking areas, entryways and other areas directly outside of your business.
- **Property & Developments:** Help protect against theft and ensure that equipment is used properly.
- **Front Door/Back Door Awareness:** Video intercoms will provide live video and alerts upon guest arrival, plus 2-way audio for communicating.



# Comelit Steel Entry Panel

- Color: Stainless Steel
- Flush-mounted entrance panel with 3mm thick stainless-steel plate. Complete with LCD graphic display and 15 buttons integrated into the plate, with no mechanical movement.
- Can Be Customized



# LED Lights Sample

## LED Wall Pack Light

---

### LED Lights



- The fixture has the capability of running on **multi-voltages**, giving it the versatility to be installed in most applications.
- The light has a **tempered glass lens** with a **strong aluminum die cast body**.
- The fixture is **weatherproof** with an IP65 rating and can withstand outdoor environments.
- This is a **highly efficient low wattage light** and can provide up to 145lm/w.
- These LED fixtures **can last over 50,000 hours**, which are over 3x the lifespan of standard Metal Halide and High Pressure Sodium bulbs, and has a 5 year warranty.
- Watts: 120W



# LED Lights Illuminating Area

---





# OLD Parking Security

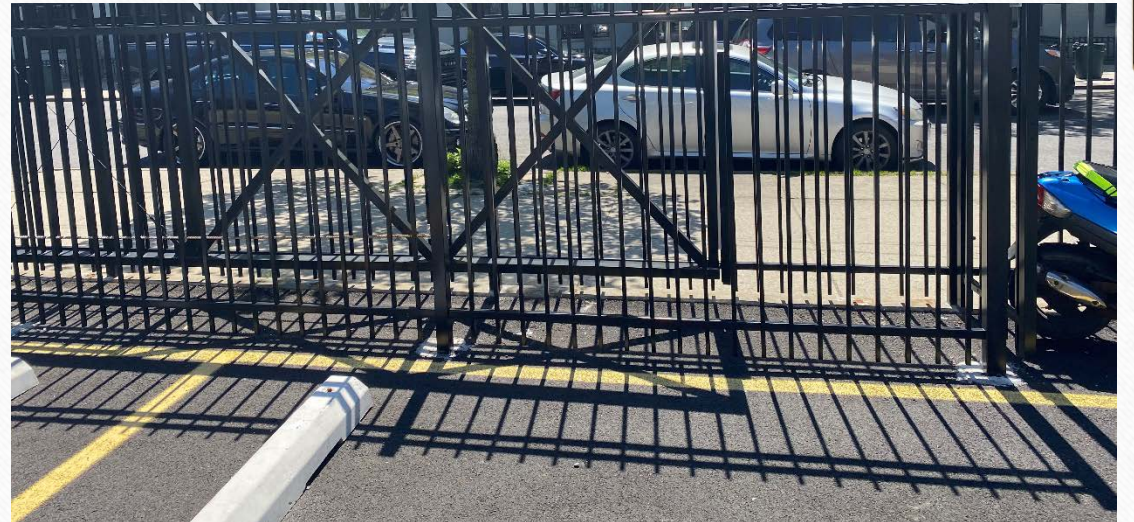




# New Parking Security

---

- Electric Gates
- Key Fob Entry Doors
- Cameras





## Recommendations

---

### Contact Information

- Brosnan Security  
<https://www.brosnanrisk.com>
- ADT Commercial Security & Fire Monitoring  
<https://www.adt.com/commercial>
- Parker Custom Security Cameras  
<https://www.parkercustomsecurity.com/>
- Reliant Security Service  
<https://www.reliantsafety.com/>
- UniFi <https://www.ui.com/>



**Thank you!**

---

**Any Questions**