

LOWER EAST SIDE V

DEVELOPMENT INFORMATION



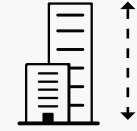
Total Buildings: 2



Buildings benefiting from FEMA funding: 2



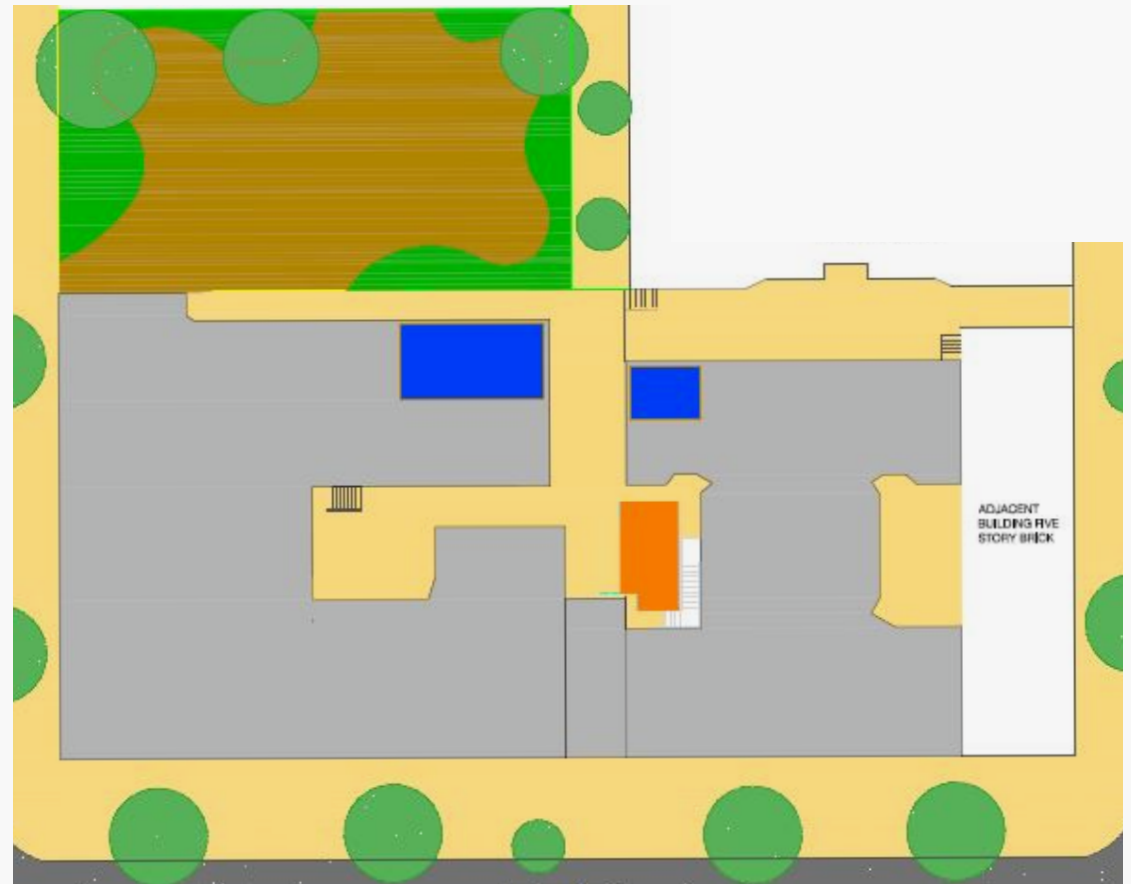
Property Size: .43 acres



Building heights: 6 stories

Legend

- Existing Funded Buildings
- Back-up Generator
- Boiler Room
- Landscape
- Trees
- Pavement/Sidewalk
- Playground Area
- Street



RECOVERY & RESILIENCE

NYCHA'S SUPERSTORM SANDY RECOVERY PROGRAM

tinyurl.com/SANDYRECOVERY
(212) 306-8532 — disaster.recovery@nycha.nyc.gov
Capital Projects Division Recovery and Resilience



PROJECT SCOPE

- Resiliency
 - Dry flood proof areas below the FEMA flood level
 - Install manual flood mitigation system at all ground floor openings
- Development Improvements
 - Resurface site pavement affected by construction
- Building Improvements
 - Replace and/or repair doors, door frames, hardware damaged by water
 - Renovate three (3) first floor apartments damaged by Sandy
 - Repair and replace: new hot water boilers with tankless coil for domestic water, breaching and flue, new heating hot water pumps and expansion tank, new combustion air intake fan, raising of fan ducts above FEMA flood level, new fuel oil transfer pump set, new fuel oil tank and fuel oil pipe distribution system
 - Replace floor drains, gas piping and booster pump for generator, sump pumps and back water valves
 - Construct new electrical service, current transformer cabinets, main distribution panels and automatic transfer switches
- Energy
 - Install full backup power generator with custom enclosure, new exhaust system and steel dunnage to serve both buildings
 - Implement sitewide energy and sustainability measures



RECOVERY — & —
RESILIENCE

NYCHA'S SUPERSTORM SANDY RECOVERY PROGRAM

NYCHA's Recovery & Resilience Department
Questions/Problems, 疑问/家里的问题,
Вопросы / проблемы, Preguntas/Problemas
(212) 306-8532 — disaster.recovery@nycha.nyc.gov

