



New York City Housing Authority Department of

# RECOVERY AND RESILIENCE

NYCHA'S SUPERSTORM SANDY RECOVERY PROGRAM



**RECOVERY** — & — **RESILIENCE**

NYCHA'S SUPERSTORM SANDY RECOVERY PROGRAM



Department of  
Youth & Community  
Development



**KPF**

# Agenda

- ✔ **Recovery and Resilience Program Overview (3 minutes)**
- ✔ **Red Hook Project Progress (5 minutes)**
- ✔ **Current Status (10 minutes)**
- ✔ **Construction and Mitigation (10 minutes)**
- ✔ **Careers in Construction (3 minutes)**

# Superstorm Sandy Investment

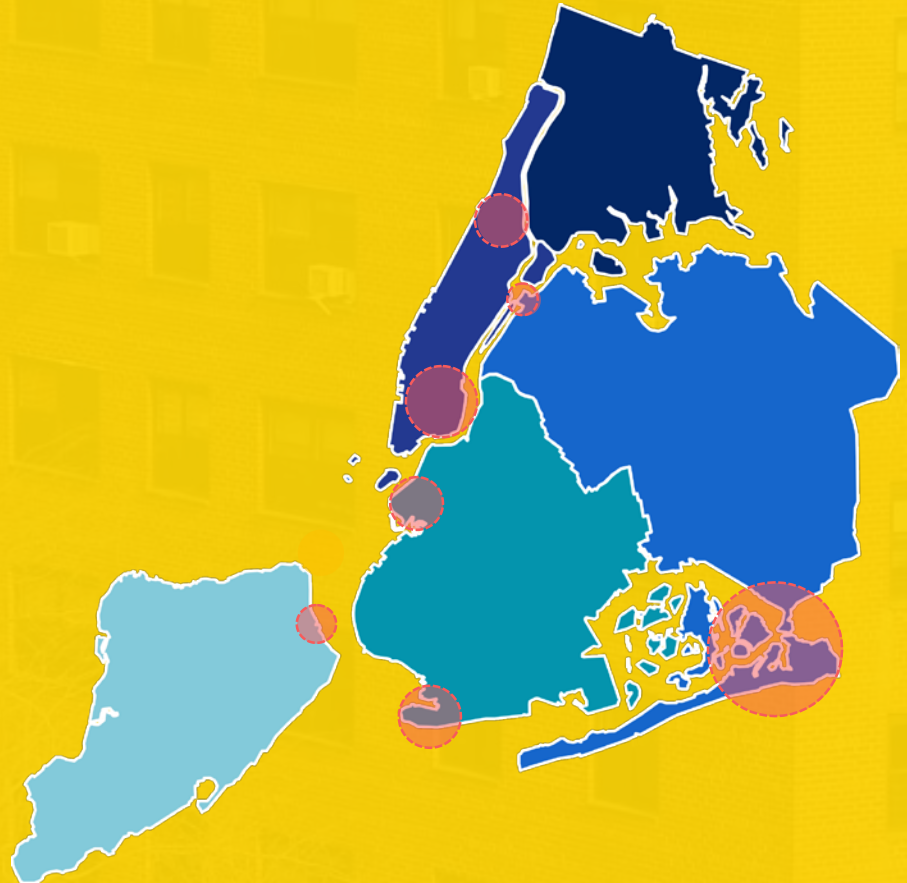
4 boroughs

35 sites

200+ buildings

60,000 residents

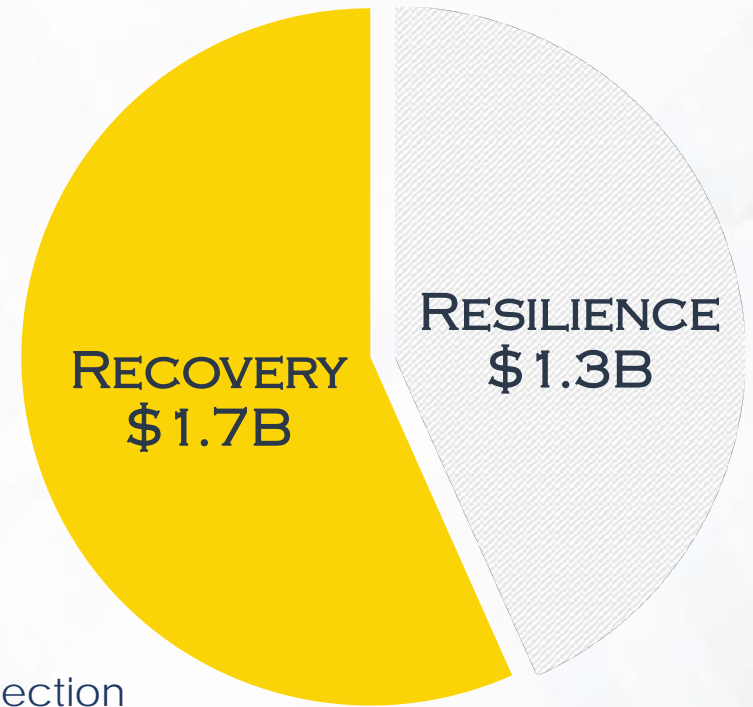
+\$3 billion of investment



**RECOVERY** & **RESILIENCE**

NYCHA'S SUPERSTORM SANDY RECOVERY PROGRAM

# Recovery & Resilience Funding and Scope



## Recovery

01. MEP Repairs
02. Playgrounds
03. Site Restoration

## Resilience

01. Surge Protection
02. Building Reinforcement
03. Infrastructure Upgrade



**RECOVERY** & **RESILIENCE**

NYCHA'S SUPERSTORM SANDY RECOVERY PROGRAM

# Program Status

## Status of Funds



**\$3.26 billion**

total funding from FEMA, HUD, and insurance



**\$2.98 billion**

in contracts awarded



**\$1.74 billion**

of work completed

2 developments complete



33 major projects in progress  
(234 buildings benefitting from active construction)

## Work Completed

139	roofs replaced	142	new hot water heaters installed
1,148	exterior lights installed	54	new boilers set in place
931	CCTV cameras installed	3	new boilers systems operational (200 apartments served)
33	entrance doors with new security systems	99	full power emergency generators installed
26	new MEP annex buildings completed	26	back up generators operational
50	new annex buildings in progress		



## Red Hook East & West Progress Overview

---



**RECOVERY** ——— & ———  
**RESILIENCE**

NYCHA'S SUPERSTORM SANDY RECOVERY PROGRAM

# Superstorm Sandy



**RECOVERY** ——— & ———  
**RESILIENCE**

NYCHA'S SUPERSTORM SANDY RECOVERY PROGRAM

# Superstorm Sandy Damage



**RECOVERY** ——— & ———  
**RESILIENCE**

NYCHA'S SUPERSTORM SANDY RECOVERY PROGRAM



# NYCHA R&R Scope of Work



Standby generators



New boiler equipment



Flood proofing



Mechanical, electrical, and plumbing annexes



Full roof replacement



Site lighting upgrades

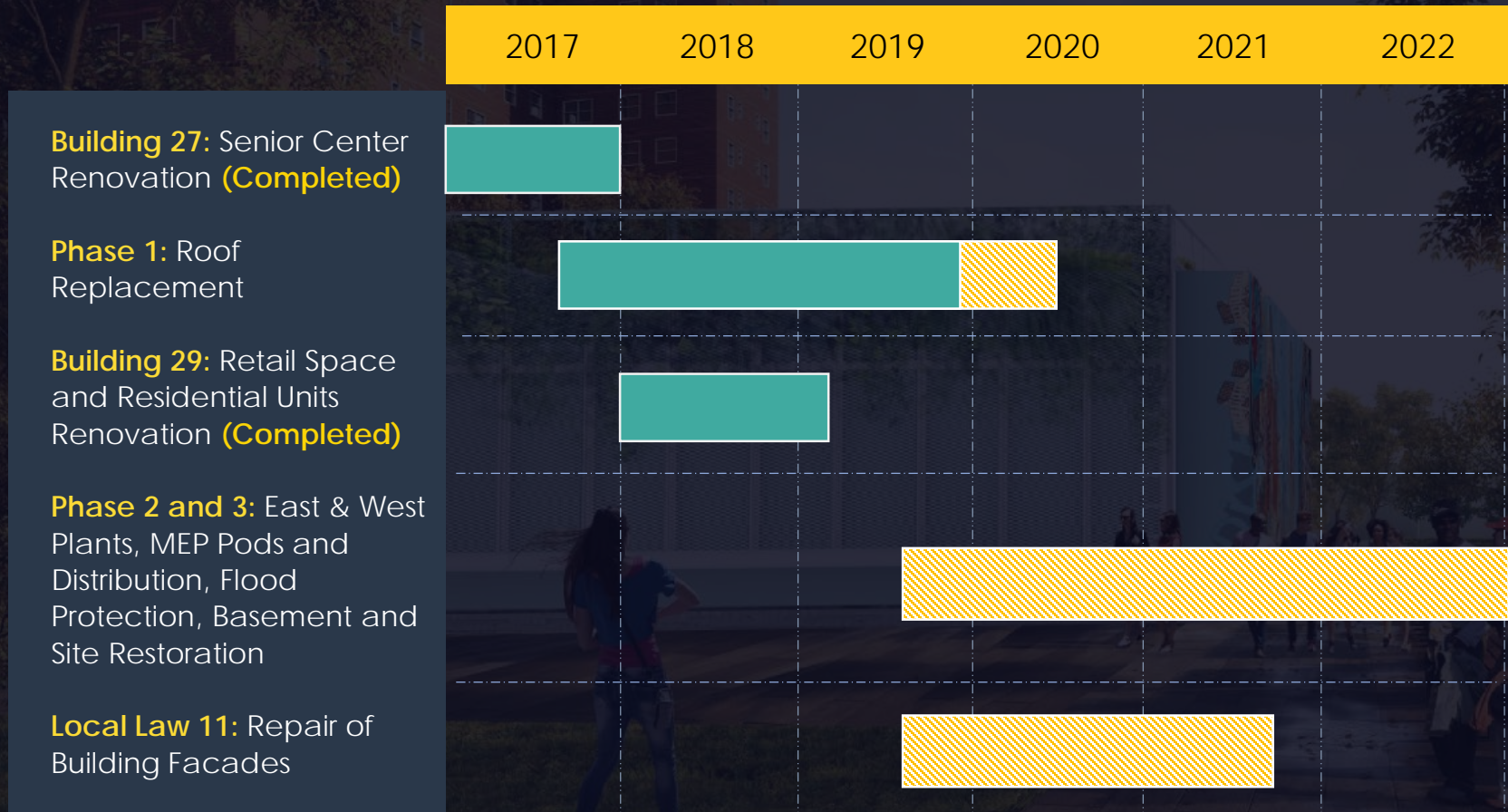


CCTV Cameras



Ground Restoration

# On going/Upcoming Construction Timeline



**RECOVERY & RESILIENCE**

NYCHA'S SUPERSTORM SANDY RECOVERY PROGRAM



# □ Current Status

## Phase 1- Roof Replacement



**RECOVERY** ——— & ———  
**RESILIENCE**

NYCHA'S SUPERSTORM SANDY RECOVERY PROGRAM

# Roof Restoration



## Construction Progress



**RECOVERY** ——— & ———  
**RESILIENCE**  
NYCHA'S SUPERSTORM SANDY RECOVERY PROGRAM

# Roof Restoration



Substantially  
Complete Buildings:  
Red Hook East: 2-13  
Red Hook West: 15-18



## Construction Progress



**RECOVERY** — & — **RESILIENCE**

NYCHA'S SUPERSTORM SANDY RECOVERY PROGRAM



Ongoing Work  
Red Hook East Buildings: 1E, 14E



Ongoing Work  
Red Hook West: Buildings 1W, 2W,  
3W, 19W - 25W



# Construction Progress



**RECOVERY** ——— & ———  
**RESILIENCE**

NYCHA'S SUPERSTORM SANDY RECOVERY PROGRAM

# □ Additional Investment in Building Facades: Addressing Local Law 11 Issues

---





# Current Status

## Major Resilience Work

General Contractor:



Adam's European  
Contracting Inc.

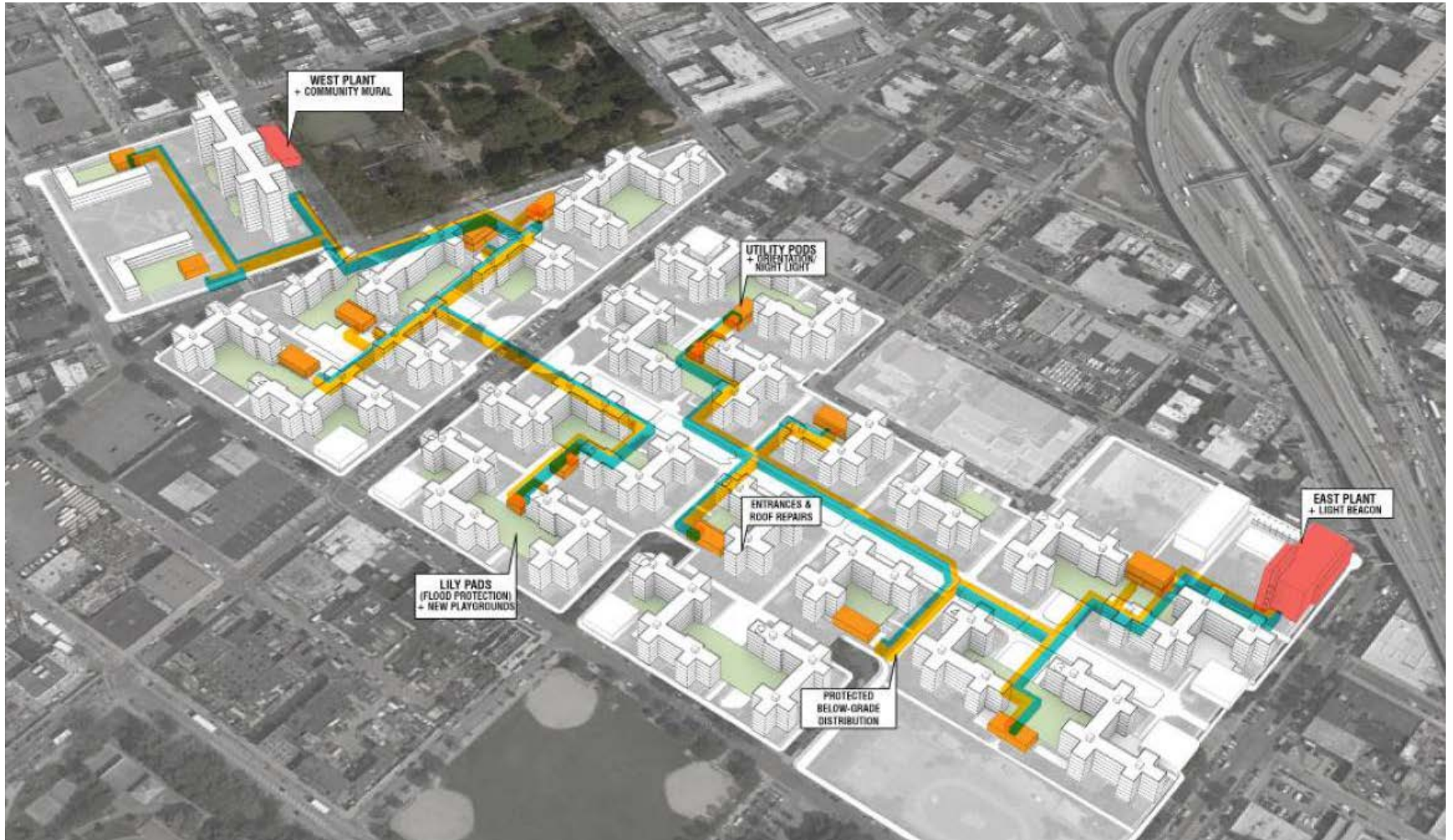


NEW YORK CITY  
HOUSING  
AUTHORITY

RECOVERY ——— & ———  
RESILIENCE

NYCHA'S SUPERSTORM SANDY RECOVERY PROGRAM





# Plants, Pods, and Utility Distribution



**RECOVERY** — & — **RESILIENCE**  
NYCHA'S SUPERSTORM SANDY RECOVERY PROGRAM



Conceptual Rendering

# East Plant



**RECOVERY** ——— & ———  
**RESILIENCE**  
NYCHA'S SUPERSTORM SANDY RECOVERY PROGRAM



Conceptual Rendering

# East Plant



**RECOVERY** ——— & ———  
**RESILIENCE**  
NYCHA'S SUPERSTORM SANDY RECOVERY PROGRAM



Conceptual Rendering

# West Pod



**RECOVERY** ——— & ———  
**RESILIENCE**

NYCHA'S SUPERSTORM SANDY RECOVERY PROGRAM



Conceptual Rendering

## Mechanical, Electrical, and Plumbing Pods



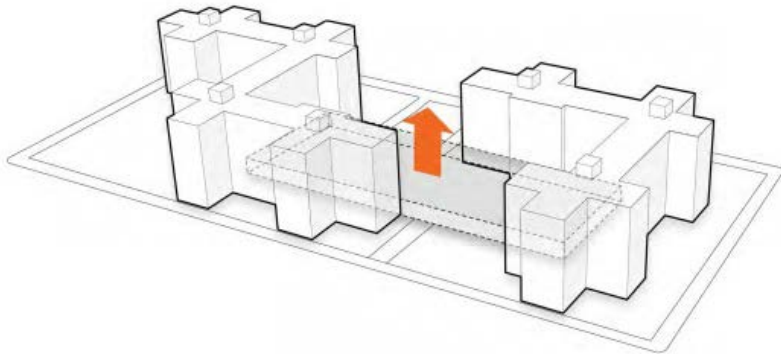
**RECOVERY** — & — **RESILIENCE**  
NYCHA'S SUPERSTORM SANDY RECOVERY PROGRAM

# Lily Pads (Passive Flood Protection)

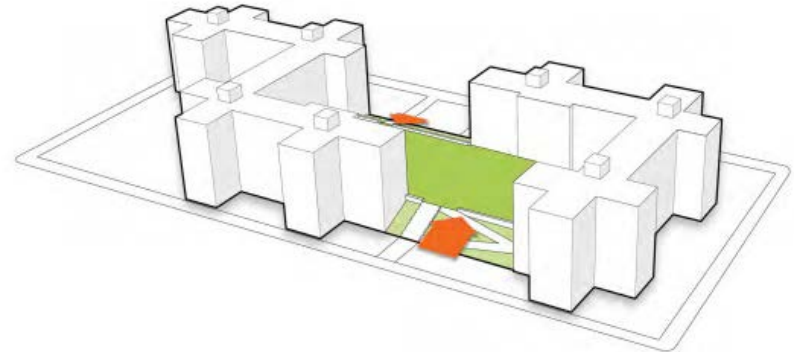


**RECOVERY** ——— & ———  
**RESILIENCE**  
NYCHA'S SUPERSTORM SANDY RECOVERY PROGRAM

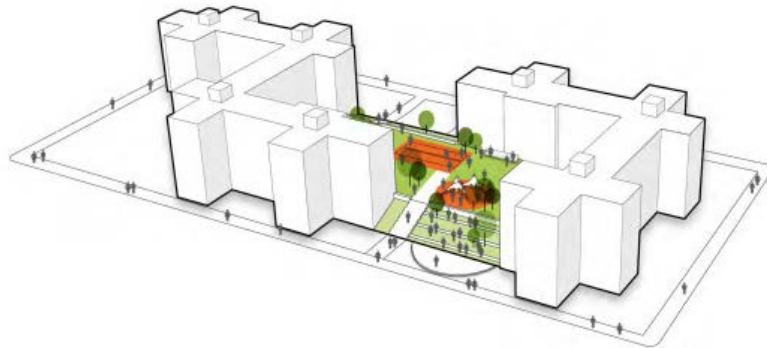
# Lily Pads (Passive Flood Protection)



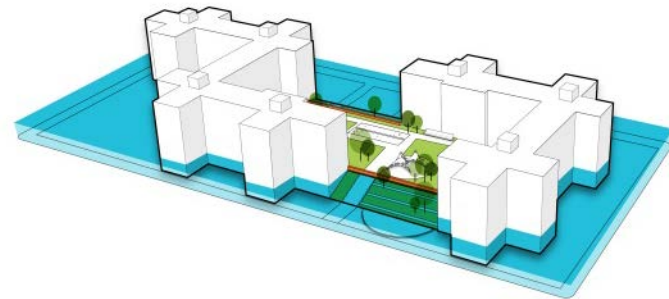
1. Earth is lifted to median FFE height



2. 5% slopes provide barrier free access



3. Surface programmed for residents



4. Passive barriers deployed in floods

# □ Lily Pads (Passive Flood Protection)



**RECOVERY** ——— & ———  
**RESILIENCE**

NYCHA'S SUPERSTORM SANDY RECOVERY PROGRAM



# Lily Pads (Passive Flood Protection)

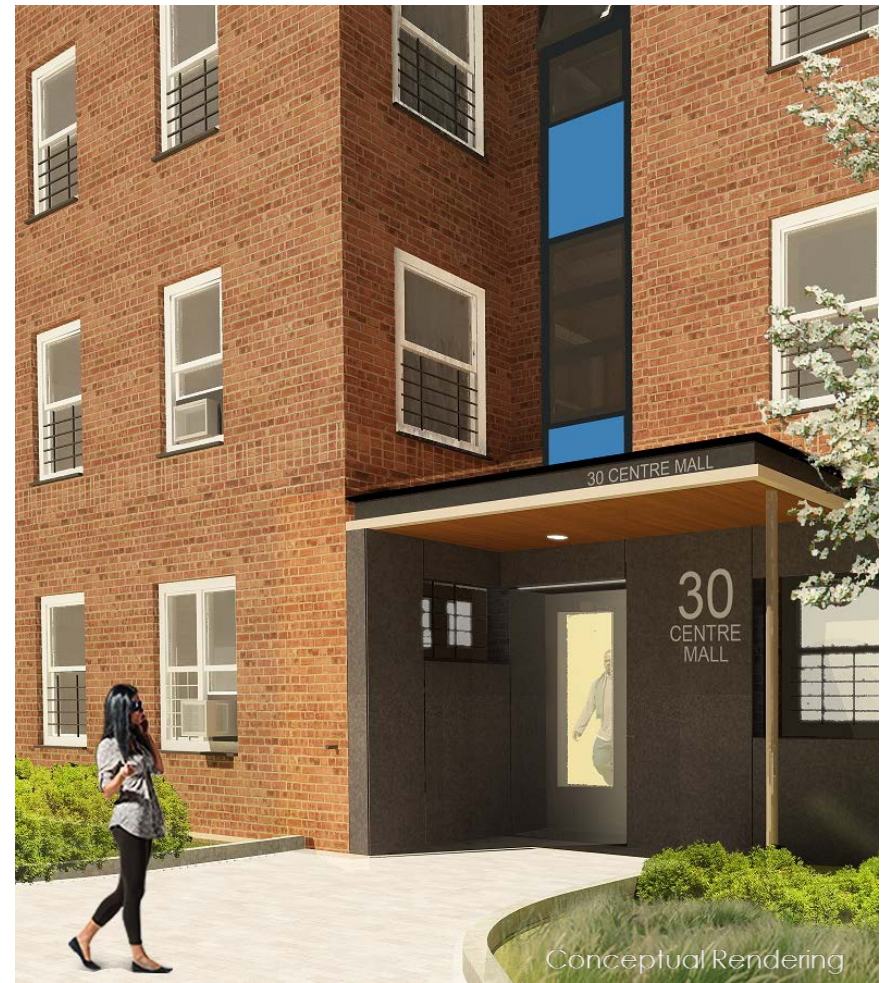




# Lily Pads



**RECOVERY** — & — **RESILIENCE**  
NYCHA'S SUPERSTORM SANDY RECOVERY PROGRAM



# Renovated Building Entryways



**RECOVERY** —&— **RESILIENCE**

NYCHA'S SUPERSTORM SANDY RECOVERY PROGRAM



## □ Construction Impact and Mitigation

---












**RECOVERY** ——— & ———  
**RESILIENCE**

NYCHA'S SUPERSTORM SANDY RECOVERY PROGRAM

# Red Hook Site Plan

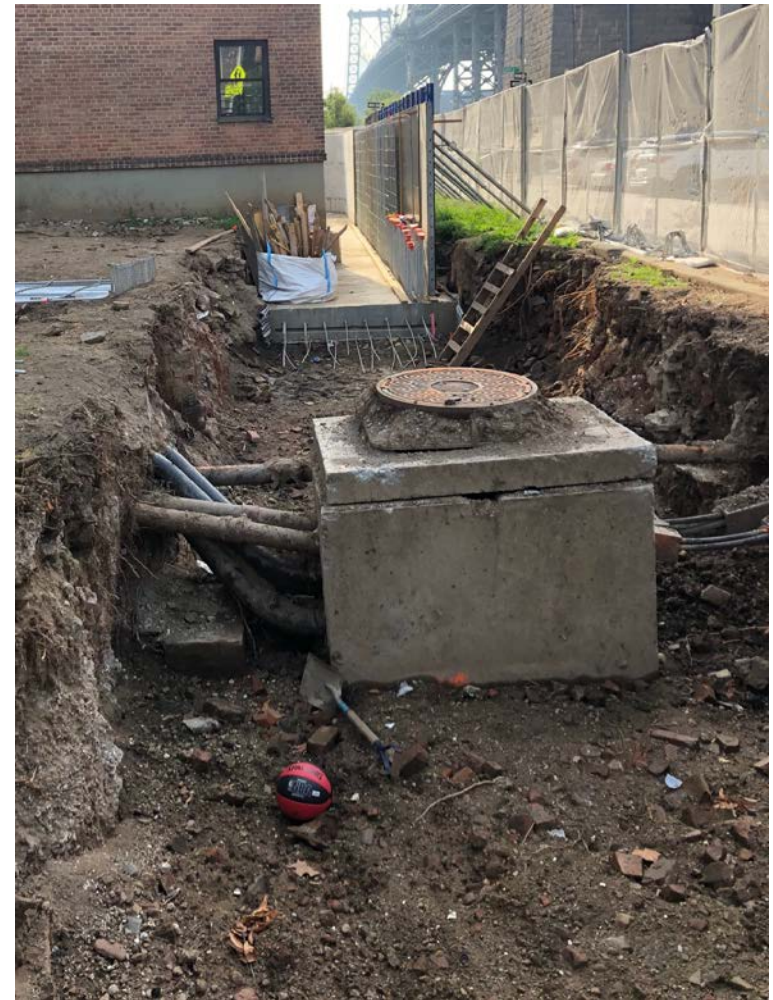


**Legend:**

-  Roof Replacement
-  Lily Pads
-  MEP Pods
-  Underground Distribution Lines
-  Play Areas
-  Basketball Courts
-  Adult Fitness Area
-  Trash Collection
-  Other Construction Impacted Areas



**RECOVERY & RESILIENCE**  
NYCHA'S SUPERSTORM SANDY RECOVERY PROGRAM



Site-wide Excavation  
Service Interruptions  
Entrance and Pathway Closures  
Tree Removal  
Parking Area Closures

## Construction Impact



RECOVERY & RESILIENCE

NYCHA'S SUPERSTORM SANDY RECOVERY PROGRAM

# Site-Wide Excavation

## Mitigation measures:



Ground Penetrating Radar (GPR) surveys



Utility mark outs



Coordination with utility company



Hand-digging to identify lines



# Planned Service Interruptions

## Mitigation measures:

1

Flyer postings and phone calls at least **48 hours in advance**

2

Coordination and planning

3

Accommodation spaces, as needed





# Pest Control

## Mitigation measures:

Site-specific pest management plan

EPA-approved pesticides, as needed

Bait traps

Daily cleanup of work areas



# Temporary Entrance/ Pathway Closures

Mitigation measures:

1

Clear wayfinding signage

2

Flyer postings and phone calls at least **48 hours in advance, as needed**

3

Coordination with NYCHA property management and resident association



# Dust-Producing Work

Mitigation measures:



Wetting of work surface areas, as needed



Utilization of HEPA vacuums



Protective tarp, as needed, to contain dust



# Debris-Producing Work

Mitigation measures:



Sidewalk sheds



Fencing and netting



Plywood walls



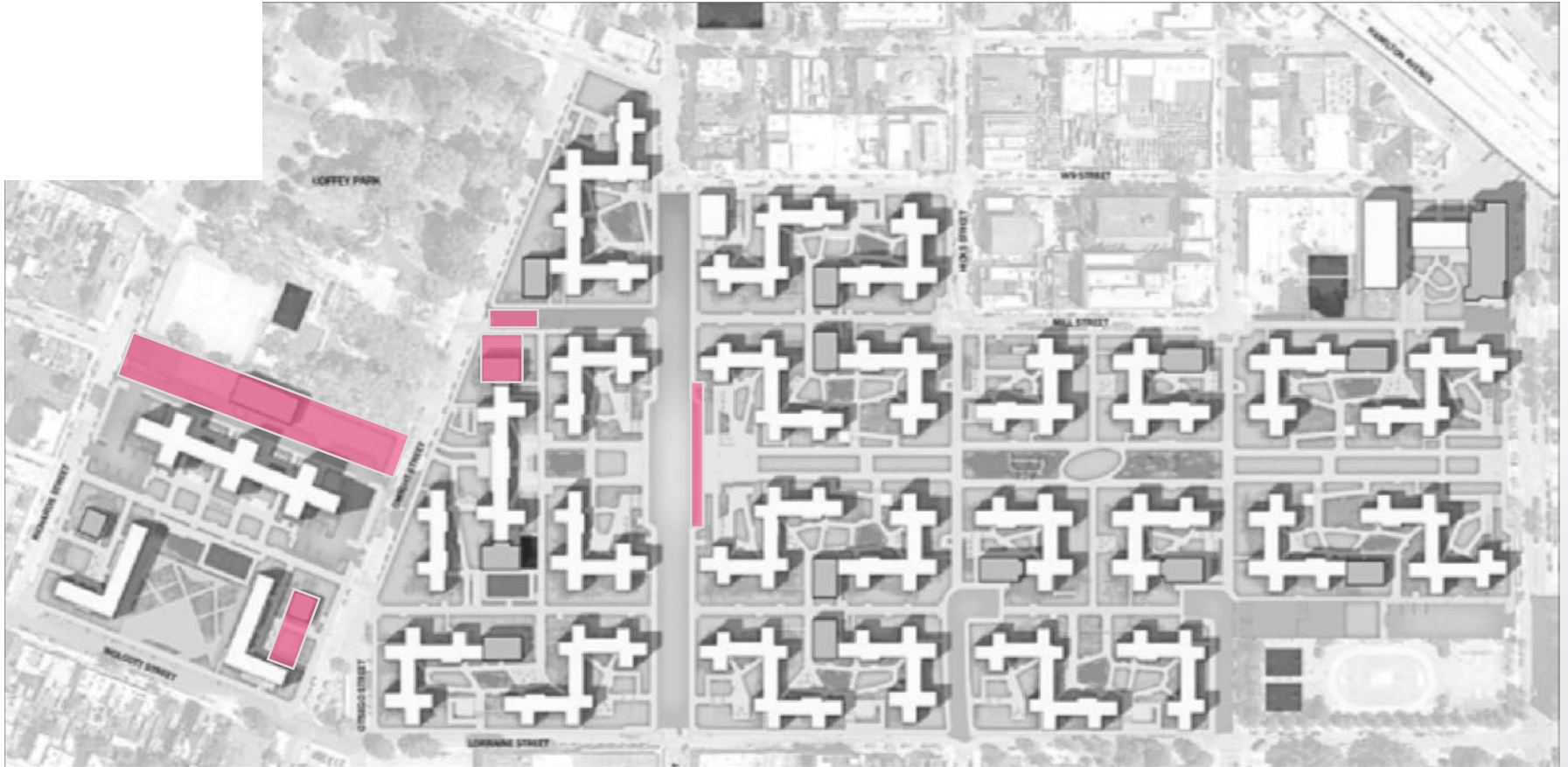
**Artbridge**  
connects the public to the arts



**RECOVERY** ——— & ———  
**RESILIENCE**

NYCHA'S SUPERSTORM SANDY RECOVERY PROGRAM

# Existing Parking to Be Affected



# Parking After Construction



**RECOVERY** ——— & ———  
**RESILIENCE**

NYCHA'S SUPERSTORM SANDY RECOVERY PROGRAM

# Tree Removal

## Mitigation measures:

Removal total reduced from 572 to **457 trees**.

1

Original design scope at Red Hook included the removal of **572 trees**.

2

Significant effort was made to avoid tree removal, resulting in the saving of **115 trees**.

3

NYCHA strives for 1 for 1 replacement at the end of each project as space constraints and funding permit.

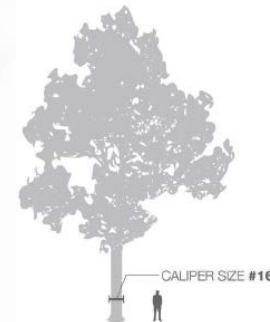
### EXISTING TREES



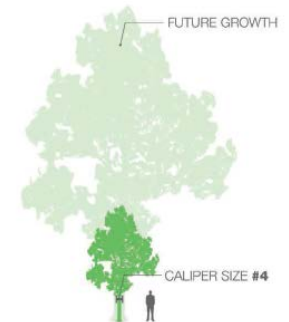
### MINIMUM FUTURE TREES CALIPER SIZE TBD



FOR EVERY EXISTING TREE TO BE REMOVED...



ONE-FOR-ONE TREE PLANTED WILL





# Careers in Construction



**RECOVERY** ——— & ———  
**RESILIENCE**

NYCHA'S SUPERSTORM SANDY RECOVERY PROGRAM



# Rebuilding Together

## Program benefits:

OSHA 30 Certification	Personal Protective Equipment
Direct Union Entry	Visit Union Facilities
Flagger & Scaffolding Certification	MetroCard Option



## Applicants must:

1

Must be an On-Lease NYCHA resident of a hurricane Sandy-impacted development

2

Be 18 years of age or older

3

Must possess High School Diploma or HSE

4

Must provide proof of address

5

Must be interested in a union career in construction

For information:

Call (718) 488-8840 x18 or email [phil.galeazzi@rebuildingtogethernyc.org](mailto:phil.galeazzi@rebuildingtogethernyc.org)



**RECOVERY** ——— & ———  
**RESILIENCE**  
NYCHA'S SUPERSTORM SANDY RECOVERY PROGRAM



# Let's Connect!

Meet us at the next Resident Association meeting (East and West) or reach us through phone or email!

## NYCHA Recovery & Resilience Team

1 [disaster.recovery@nycha.nyc.gov](mailto:disaster.recovery@nycha.nyc.gov)

2 Hotline: 212-306-8532

Check out our website, too!

3 [Tinyurl.com/SandyRecovery](https://tinyurl.com/SandyRecovery)



**RECOVERY** ——— & ———  
**RESILIENCE**

NYCHA'S SUPERSTORM SANDY RECOVERY PROGRAM

# Questions?



Stop by one of  
our tables:

- Recovery & Resilience
  - NYCHA Red Hook Property Management
- Adam's European Contracting Inc.
- Rebuilding Together NYC



[tinyurl.com/SandyRecovery](https://tinyurl.com/SandyRecovery)



[Disaster.Recovery@nycha.nyc.gov](mailto:Disaster.Recovery@nycha.nyc.gov)



212-306-8532



**RECOVERY** ——— & ———  
**RESILIENCE**

NYCHA'S SUPERSTORM SANDY RECOVERY PROGRAM



# THANK YOU |

NYCHA's Department of Recovery and Resilience  
Disaster.Recovery@nycha.nyc.gov – 212-306-8532  
[tinyurl.com/SandyRecovery](http://tinyurl.com/SandyRecovery)



**RECOVERY** — & — **RESILIENCE**  
NYCHA'S SUPERSTORM SANDY RECOVERY PROGRAM



Department of  
Youth & Community  
Development

