



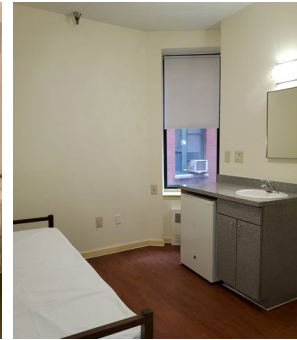
BRC-0000 (E)
Rev. 04/22/2022

© Copyright 2022. The City of New York, Department of Social Services. For permission to reproduce all or part of this material contact the New York City Department of Social Services.

Supportive Housing

Let us help you find a permanent home.

A place to call your own can help you feel safe and comfortable. We can help you look for and find housing.



Supportive Housing gives you permanent, affordable housing in a safe, accessible, and pleasant building.

Supportive Housing also can help you access voluntary services that you can use like:

- Case management
- Linkage to medical, mental health, and substance use services
- Social activities
- Help to access and manage benefits you may be qualified for Supportive Housing staff care, will get you the help you want, and will always respect your privacy.

New York City (NYC) has supportive housing for:

- individuals
- adult families (all over 18 years of age)
- families with minor children

You will have your own room/apartment and a lease that details your rights and responsibilities as a tenant. Most supportive housing require that you pay only 30% of your income toward rent and utilities. If you don't have income we can help you apply for benefits to help pay the rent!

NYC has two types of supportive housing:

- **Congregate Housing** — a single building with individual units and staff on site
- **Scattered-site Housing** — individual apartments in buildings throughout the city with services provided in the home or in the community



How Do I Get Supportive Housing?

There are lots of different supportive housing programs and one can be good for you. Your case manager will help you through the application process. Once approved, you will view units and be supported through move in day.



What is Supportive Housing Like?

There are many different supportive housing locations throughout the city. The photos shown here come from existing supportive housing programs. Please note that amenities and services available may vary by program. However, all supportive housing programs combine affordable permanent housing with support and case management services.



Talk to your case manager to get more information and to start the move to your new home!