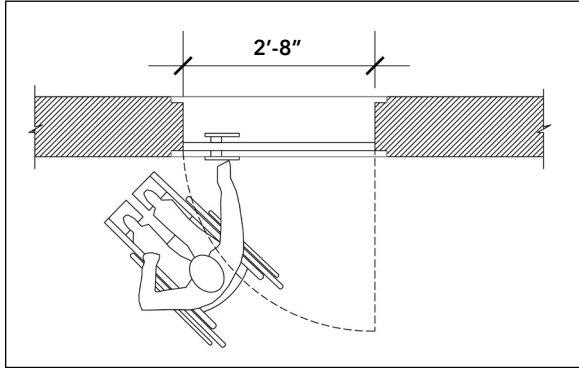


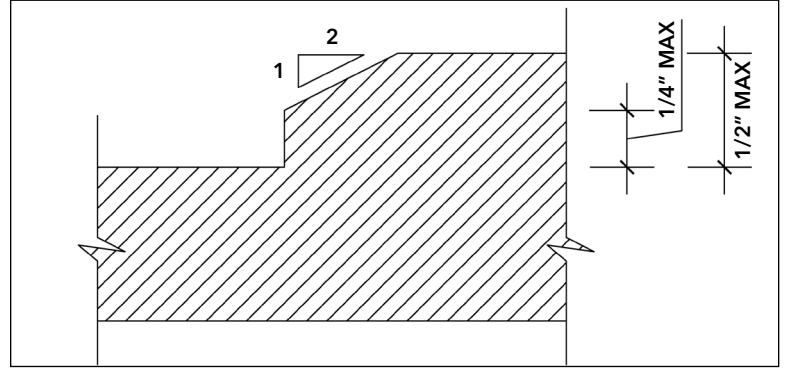
RAP Survey Guidelines

#1. Entrance Landings

- Both sides of the doorway should be fairly level
- There should be enough maneuvering room on both sides of the door for a person in a wheelchair to avoid a conflict with the door swing
- The threshold or saddle should be no higher than 1" with beveled edges



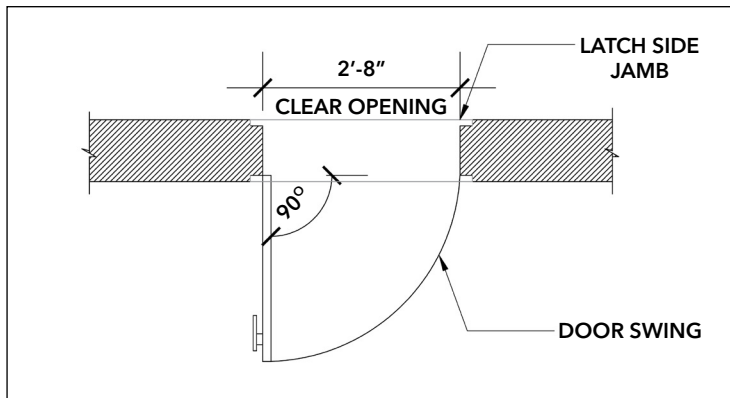
DOOR MANEUVERING CLEARANCE



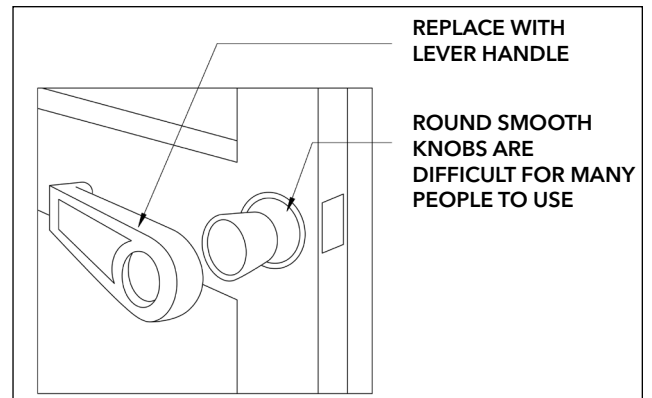
BEVELED CHANGES IN LEVEL

#2. Doorway Clear Opening

- A 32-inch minimum clear opening is determined by measuring from the stop on the latch side jamb to the face of the door when standing in a 90-degree open position
- Door handles should be lever type



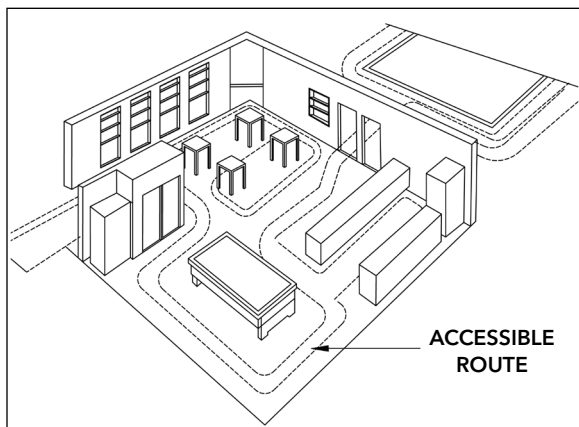
DOOR OPENING



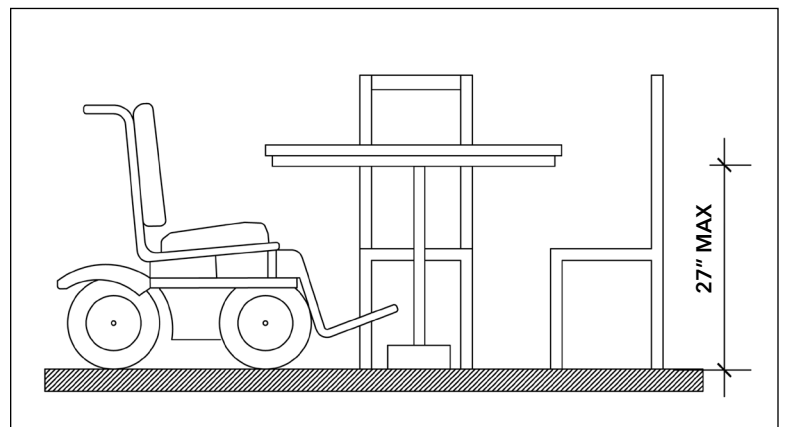
ADD-ON DOOR LEVER HANDLE

#3 Level Route to Wheelchair Spaces

- A 36-inch clear route allows a person to navigate to various eating and drinking areas in restaurant
- A 27-inch minimum knee clearance from floor surface to underside of dining surface



LEVEL ROUTE TO WHEELCHAIR SPACES



ACCESSIBLE SEATING AT TABLE