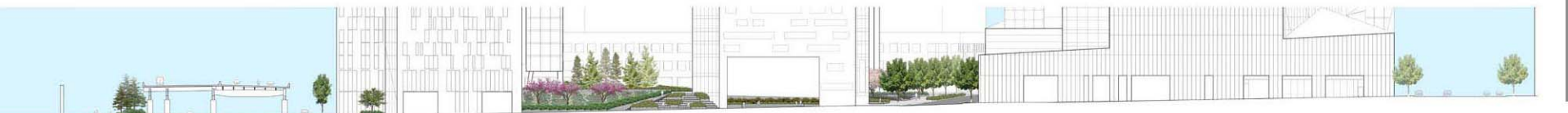


# West 59<sup>th</sup> Street Elevation



RIVERSIDE BLVD  
WEST SIDE HIGHWAY

BUILDING 3

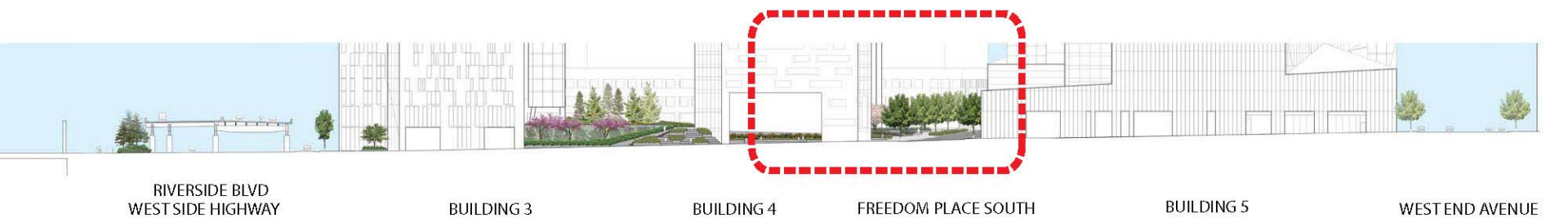
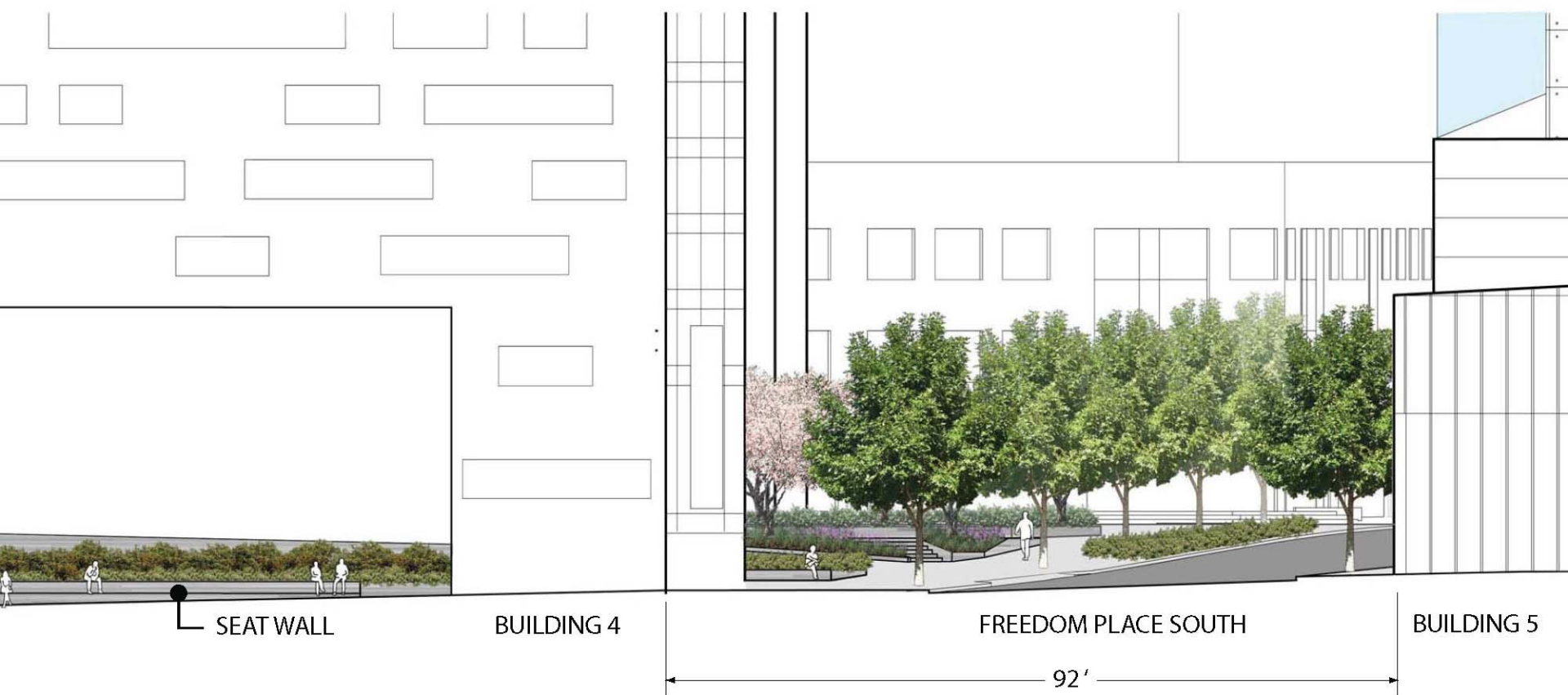
BUILDING 4

FREEDOM PLACE SOUTH

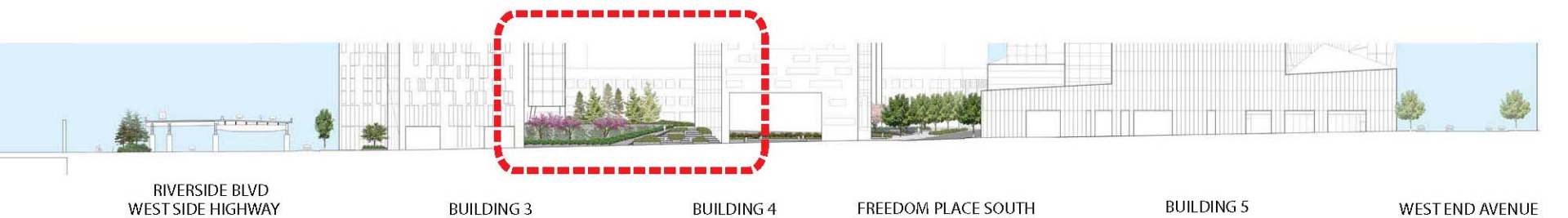
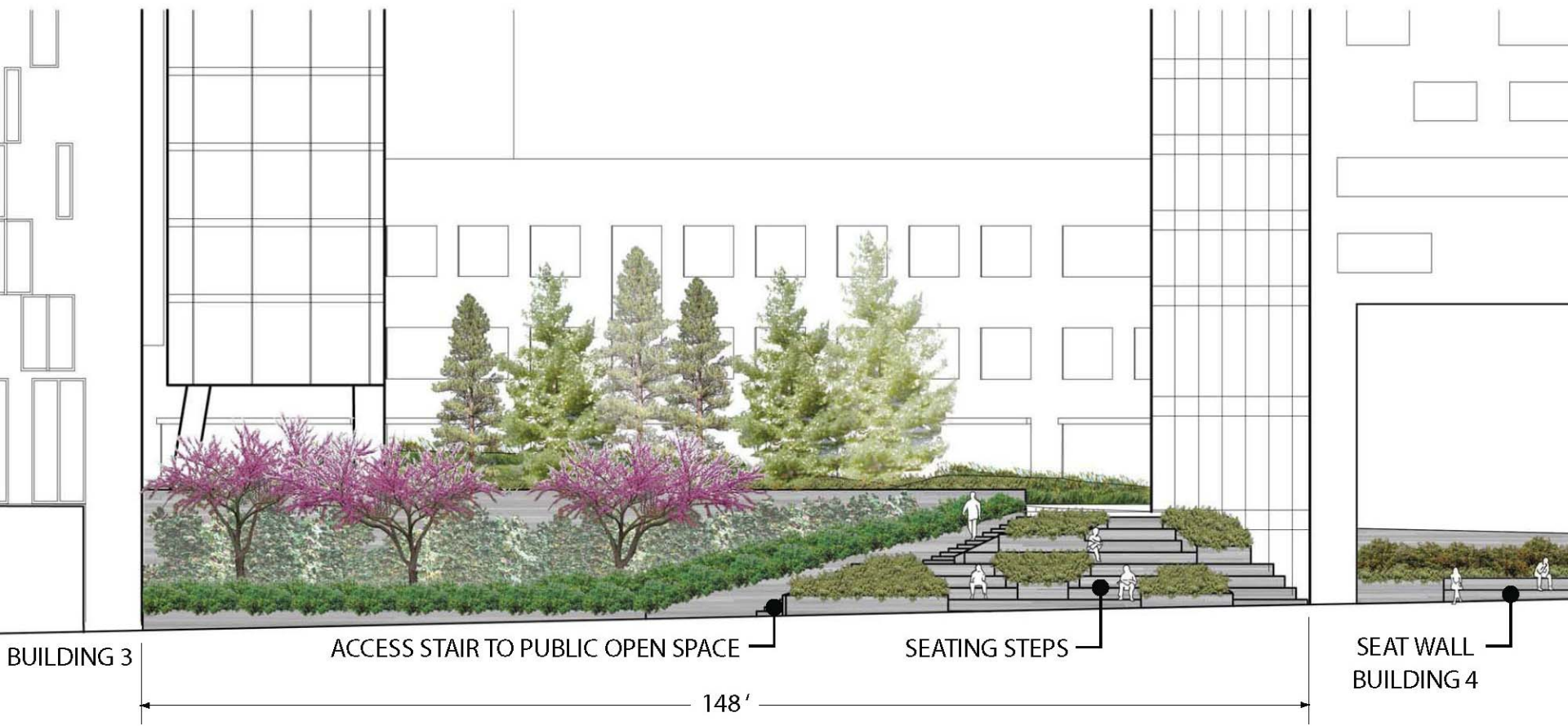
BUILDING 5

WEST END AVENUE

# West 59<sup>th</sup> Street Elevation



# West 59<sup>th</sup> Street Elevation



# West 59<sup>th</sup> Street

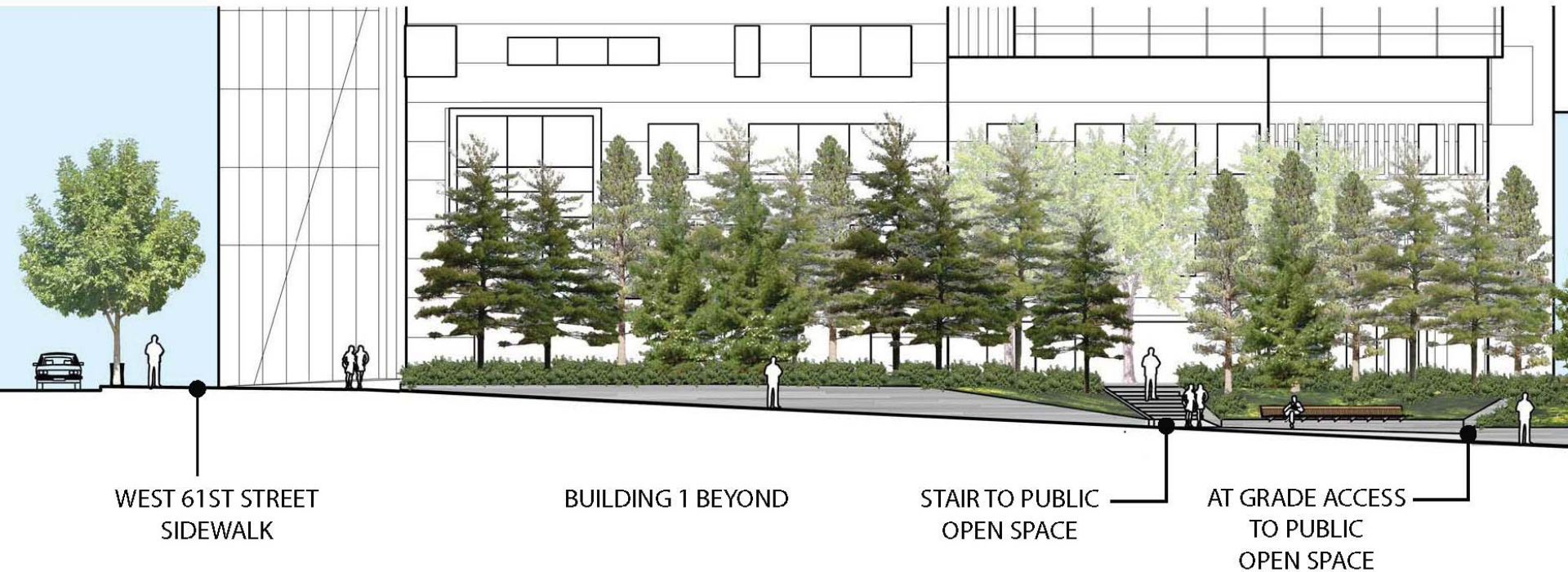
looking east



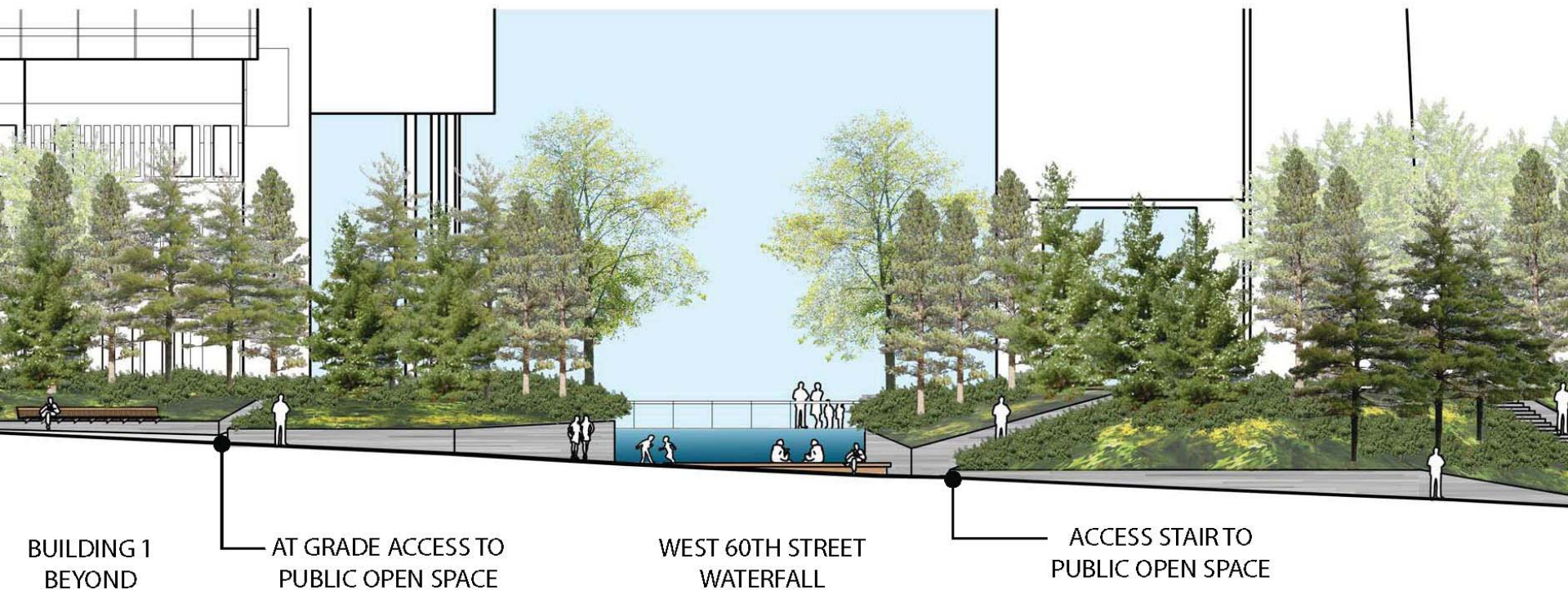
# Riverside Boulevard Elevation



# Riverside Boulevard Elevation



# Riverside Boulevard Elevation



# Riverside Boulevard Elevation



# Riverside Boulevard

looking north east



# Required Public Actions

- Fifth Modification to Restrictive Declaration to reflect changes in Riverside South floor area and the Riverside Center site plan for Parcels LMN
- Railroad and Transit Airspace Special Permit for the garage and the amended Riverside Center plan for parcels LMN
- Zoning text changes to provide for modification by special permit of court regulations and for the operation of an automobile showroom and service center
- General Large Scale Development Special Permit modifying height and setback, distance between buildings and court regulations and permitting operation of an automobile showroom and service center
- Authorization to locate a curb cut on West End Avenue at the prolongation of West 60th Street
- Certifications under the Streetscape regulations

# RIVERSIDE CENTER

Presentation to Community Board 7



© ATELIER CHRISTIAN DE PORTZAMPARC, APRIL 2010