

COMMUNITY DISTRICT 7: NORTH ENVIRONMENTAL JUSTICE (EJ) AREA

Bounded between Amsterdam Avenue and Central Park West, and 100th and 110th Street

- 26.7 percent or more of the total population is at or below the poverty line *
- 75 percent or more of the total population is a member of a minority group *
- Total Population = 21,561

Prepared by Rosa Arenas, Joyce Bialik,
and Seema Reddy



* An environmental justice area is a low-income community or a minority community, based on US Census data (2014-18 ACS). Map and Data can be found [here](#).

CB7 NORTH EJ AREA: PLAYGROUNDS IN NEED OF IMPROVEMENT



Anibal Aviles Playground
on West 108th Street bet.
Amsterdam & Columbus



Frederick Douglass
Playground on West 100th
Street on Amsterdam Ave



Frederick Douglass Playground

Amsterdam Ave between 100 and 101 Streets

History

Frederick Douglass Playground

This playground is named for Frederick Douglass (1818-1895), celebrated African American abolitionist, orator, author, and statesman. Frederick Douglass Playground is located on Amsterdam Avenue between 100th and 102nd Streets. In 1954, the City of New York acquired this parcel via condemnation for the benefit of the nearby Frederick Douglass Houses. The playground opened on September 10, 1958 and the Board of Estimate transferred the property from the New York City Housing Authority to Parks in August 1962.

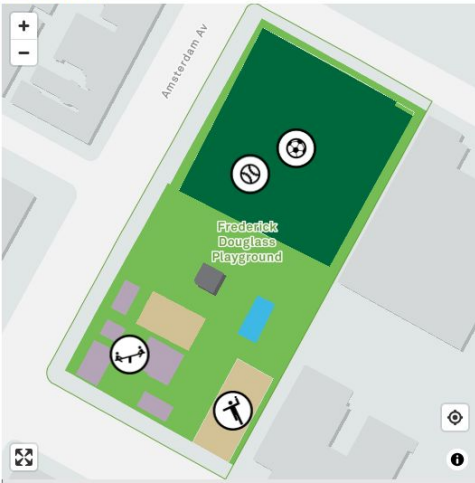
In 1998, Frederick Douglass Playground received a renovation that included the installation of modular play equipment and safety surfacing as well as the repair of handball courts. In 2008, the aboveground swimming pool was replaced with a more attractive in-ground mini pool. Additional renovations to the playground include new curbs and sidewalks, World's Fair benches, and new plantings throughout. The playground also features a handball court, turf athletic field, basketball court, comfort station, playing field, three basketball standards, swings, and camel play sculpture.

History from: <https://www.nycgovparks.org/parks/frederick-douglass-playground/history>

Map from: <https://www.nycgovparks.org/parks/frederick-douglass-playground/map>

Frederick Douglass Playground

Park Map



This map is designed to represent parks as they are used by the public. It should not be used to represent the legal boundaries of property under Parks jurisdiction. If you would like to view all City property under the jurisdiction of NYC Parks, please visit [NYC OpenData](#).

[Main](#) [History](#) [News](#) [Map](#)
[Inspections](#) [Projects](#)

[Lost and Found Information](#)

Directions to Frederick Douglass Playground

Starting Address

ex: 830 Fifth Ave, New York, NY 10065

I am traveling by:

Public Transportation

[Get Directions](#)

News

- [Parks Cuts the Ribbon on Renovated Frederick Douglass Playground](#)
- [A TREE RE-GROWS IN HARLEM](#)

Facilities

- [Basketball Courts](#)
- [Bathrooms](#)
- [Handball Courts](#)
- [Outdoor Pools](#)
- [Playgrounds](#)
- [Spray Showers](#)

More About Frederick Douglass Playground

Zip Code: 10025
Community Board: 07
Council Member: [Mark D. Levine](#)
Park ID: M220
Acreage: 1.95
Property Type: Neighborhood Park

Present-day Frederick Douglass Playground: Renovation Considerations

- **Fences:** Parks without Borders (perimeter of playground, handball court and pool)
- **Park entry:** need for more
- **Floor tiles:** covering small areas and not flat
- **Basketball Court:** Torn nets and floor mural
- **Handball court:** Floor mural and/or floor tiles
- **Seating issues:** Insufficient benches inside playground
- **Empty playspace:** unused play area
- **Other accessible and Inclusive playgrounds:** Bloomingdale playground

Frederick Douglass Playground fences:

Parks without Borders (perimeter of playground, handball court and pool)

Parks Without Borders

Making our parks more open and welcoming



Through Parks Without Borders, we're reimagining the role of parks in communities by redesigning where they meet the streets and sidewalks. As part of [OneNYC](#), Mayor Bill de Blasio has dedicated \$50 million to the program to:

Make parks more accessible and welcoming to everyone

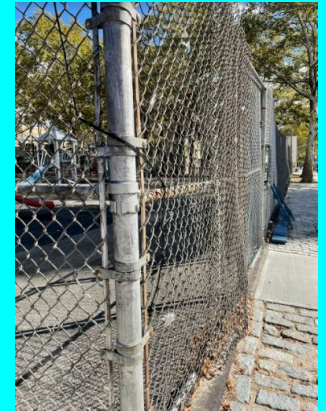
Improve neighborhoods by extending the beauty of parks out into communities

Create vibrant public spaces by transforming underused areas

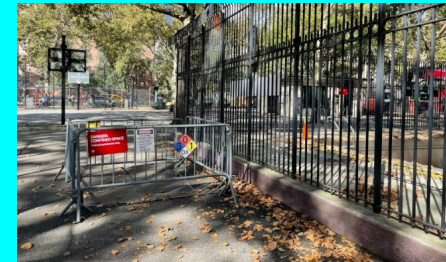
How it Works

With the Parks Without Borders approach, we are making parks more open, welcoming, and beautiful by improving entrances, edges, and park-adjacent spaces. We'll make entrances easier to find, the edges of our parks greener, add furnishing, programming, and amenities, and improve sight lines to make our parks safer. Visit our [How It Works](#) page to learn more.

Unwelcoming fencing all around Frederick Douglass Playground



Frederick Douglass Playground pool



Information from: <https://www.nycgovparks.org/planning-and-building/planning/parks-without-borders>

Frederick Douglass Playground Entry: one entrance open only



Frederick Douglass Playground floor tiles

The Frederick Douglass Playground floor tiles are uneven--all raised in the center at the point where the square tiles meet (trip/falls) and are all black (attract/trap more heat).

Other, newer playgrounds in the city have colored tiles (trap less heat) that are flat to the ground (safer for falls).

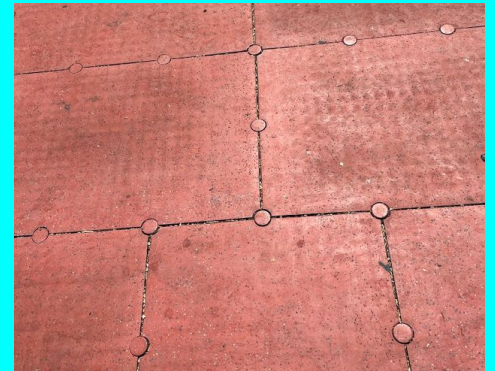
Frederick Douglass Playground floor tiles



Bella Abzug Park floor tiles



Hell's Kitchen Park floor tiles



Frederick Douglass Playground Basketball Court

Basketball Court grounds without mural



Torn basketball nets at
Frederick Douglass
Playground Basketball
Courts

Artist MADSTEEZ's Basketball
court mural Together As ONE in
NYC (Park Slope Playground)



<https://www.artisticfuel.com/public-art/painted-basketball-courts/>

Frederick Douglass Playground Handball Court

The handball court was recently painted, but might also benefit from a mural like the one Tompkins Houses in Brooklyn, NY.

Frederick Douglass Handball Court



Handball court mural at Tompkins Houses (NYCHA), Brooklyn, NY



<https://www.groundswell.nyc/projects/compass-of-dreams-27>

Frederick Douglass Playground: Insufficient seating

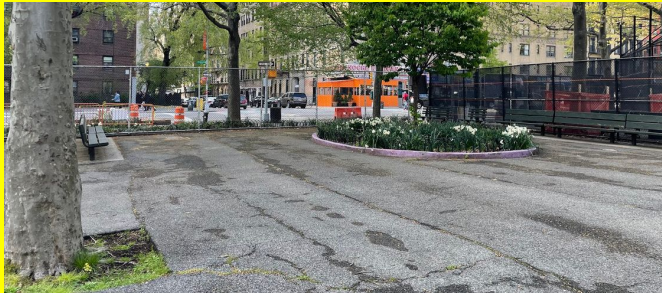
Frederick Douglass Playground



Circular Bench seating area
(Bella Abzug Park)



Tables with chairs and umbrellas
(Bella Abzug Park)



CB7 NORTH EJ AREA ACCESS ISSUES: PLAYGROUNDS & RECREATIONAL SPACES

Almost all playgrounds and recreational spaces in this area have complicated access issues, particularly in terms of recreation uses. The fields at Frederick Douglass Playground are technically available to all, but teams with permits take precedence and often overtake the fields at prime times (e.g., after school, weekends). The Bloomingdale Playground is beautiful and accessible. But access to portions of that playground are also shared with PS 145. Similar access issues also arise with the recreational spaces in Central Park and Riverside Park.



Frederick Douglass Playground unused play area: other playground ideas

There's a large unused area in the playground that could be used to add sprinklers, a drum set, climbing rope ladders, a climbing tower and/or sun shade.

Frederick Douglass Playground unused play space



Climbing Rope Ladders
(Hell's Kitchen Park)



Climbing Tower and sun shade
(Bella Abzug Park)



Sprinklers (Hell's Kitchen Park)



Drum set and Shade (Hell's Kitchen Park)



Bloomingdale Playground - Accessible playground model

In 2018, reconstruction started on the park as part of the [Community Parks Initiative](https://www.nycgovparks.org/parks/bloomingdale-playground/history) – a multi-faceted program to increase the accessibility and quality of parks throughout the five boroughs. This project reconstructed the basketball courts, paths, benches, spray shower, plantings, play equipment, and adult fitness equipment. The redesign improves accessibility for children and adults of all mental and physical abilities, ensuring this playground remains an important asset for the Upper West Side community.

<https://www.nycgovparks.org/parks/bloomingdale-playground/history>

