

Pier 36 Update

April 2025

Agenda

1. Pier 36 Overview
2. Engagement overview and timeline
3. Proposed modifications
4. How to contact

The background image shows the interior of a large event tent. The ceiling is a complex structure of metal beams with warm, orange-toned lighting strips. The floor is covered in a dark, textured material, possibly gravel or a carpet. In the center, there is a stage area with a large, illuminated backdrop that reads "PIER 36" in a stylized font. The stage is flanked by rows of potted trees with dense foliage. The overall atmosphere is professional and well-lit.

Pier 36 Overview and Engagement Timeline

Basketball City

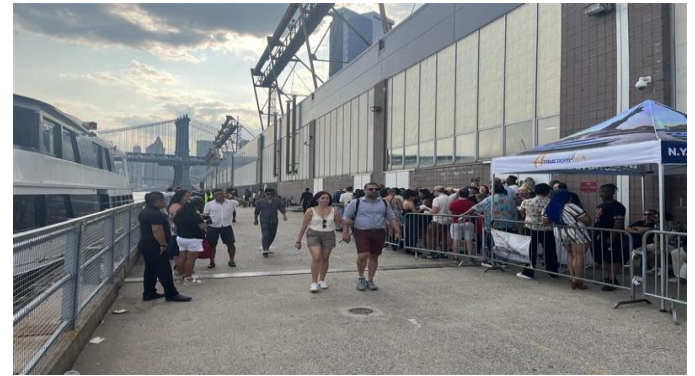
- Donated over 7,000 court hours to local schools and youth organizations
- Contributed an average of 500 scholarships annually to local residents for summer camps
- Donated over 800 courts hours to local schools during the 2024-25 school year
- Donations to a variety of local organizations including NYPD Toy Drive and Night Out Against Crime, Henry Street Settlement, NYC Dept. of Youth & Community Development, PSAL, and many others



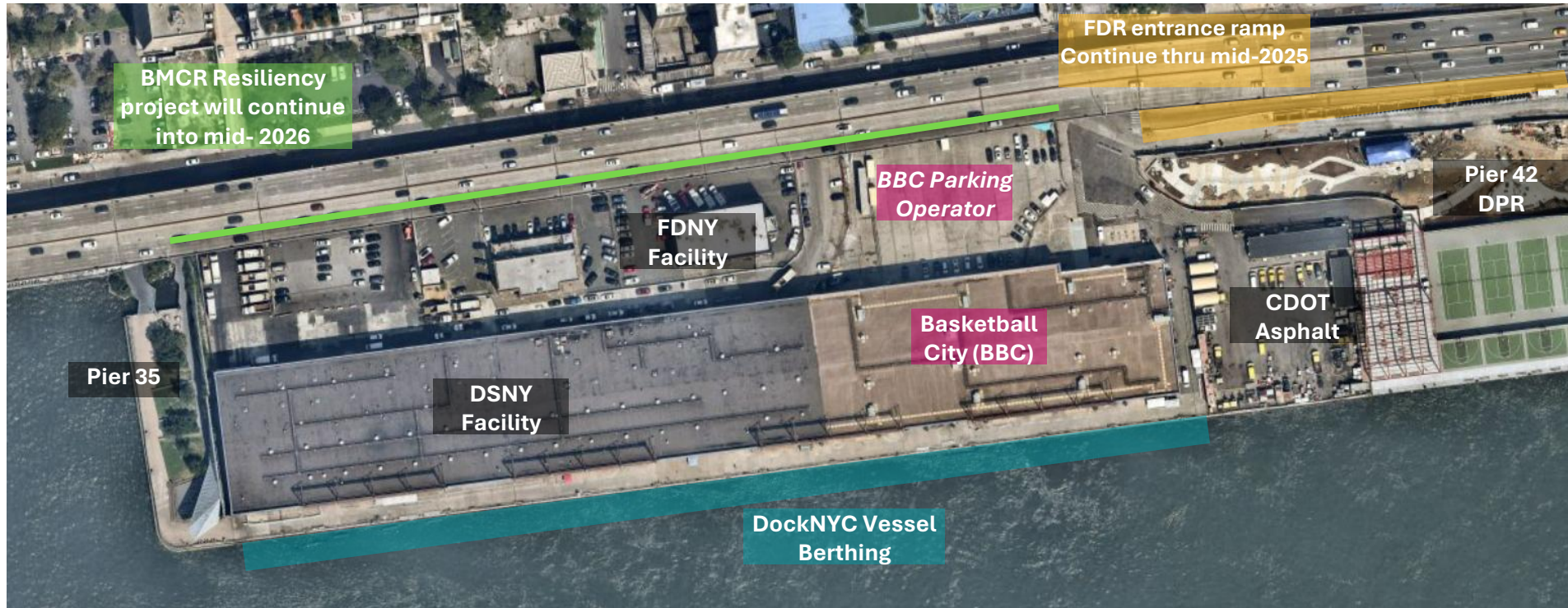
DockNYC

- DockNYC provides a diverse array of services that cater to various waterfront stakeholders,
- DockNYC works in partnership NYC Economic Development Corporation to activate waterfront assets.
- DockNYC provides resources for improving access to waterborne transportation, recreation, and oversight of publicly owned waterfront sites.
- Supporting Friends of Pier 35 events or other community-based organizations.
- Working with vessel operators to secure access to tours and other departures for local residents.

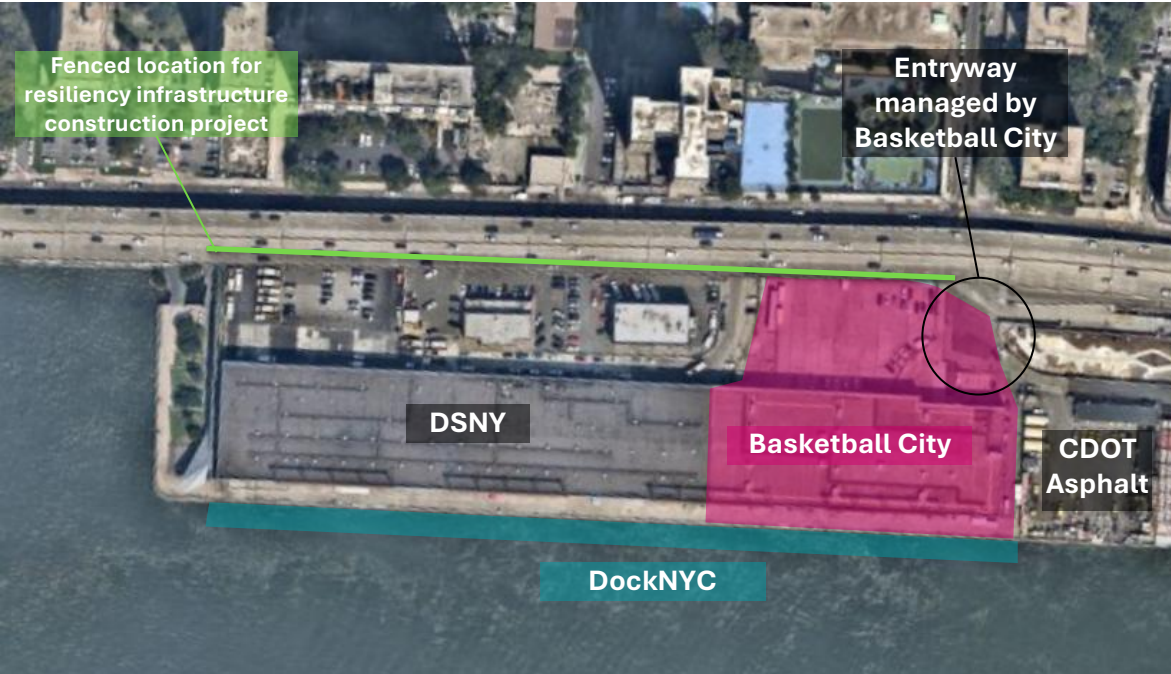
DockNYC Programming



Pier 36 – Overview of Tenants and Projects



Pier 36 Jurisdictions



Basketball City Premises

- Manage the building shed including lighting and security cameras
- Manage the parking lot area and entryway

DockNYC Vessel Berthing

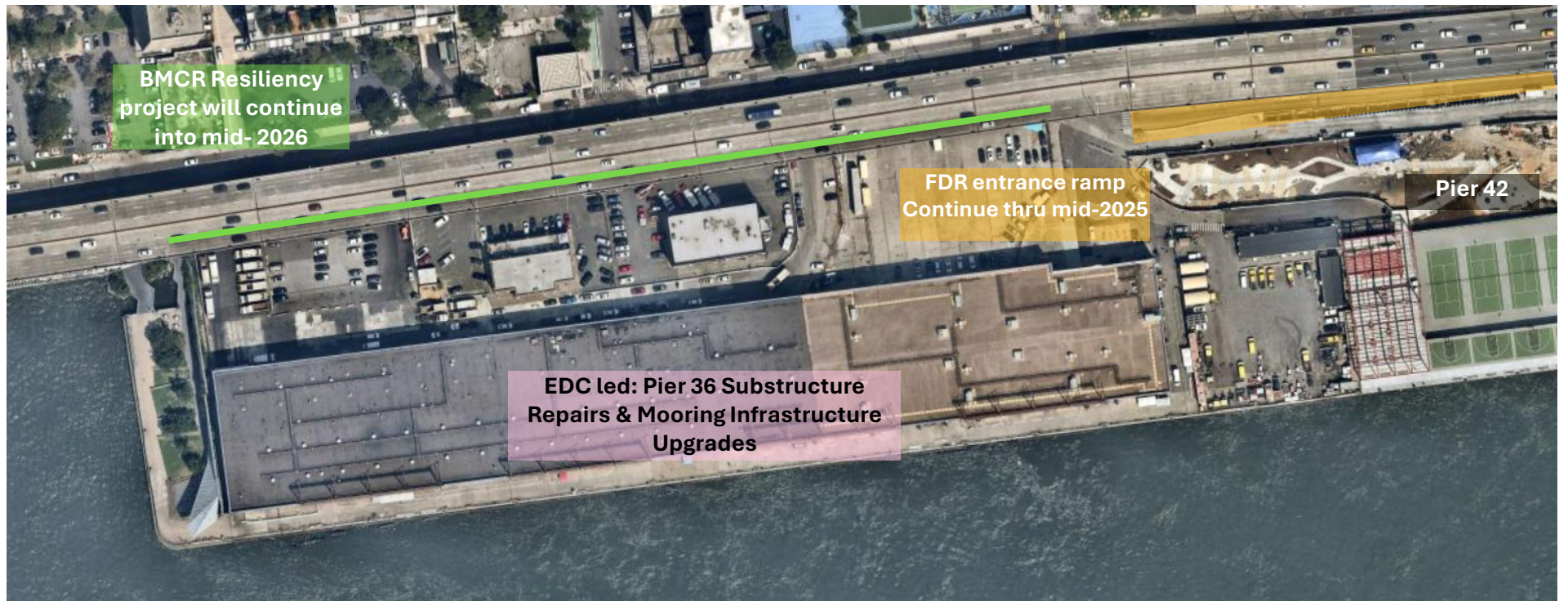
- Citywide public berth operator for EDC
- Manage the apron (tie up space) and gates at Pier 35 and Pier 36 alley

EDC

- Manages DockNYC operating agreement and Basketball City lease

Dept of Design and Construction (DDC) Projects

Active resiliency and state of good repair projects have led to challenges at Pier 36

An aerial photograph of Pier 36, a large industrial building situated along a waterfront. A multi-lane highway runs parallel to the pier. Three colored callout boxes are overlaid on the image: a green box on the left, a yellow box in the middle, and a purple box at the bottom. A green line runs horizontally across the pier area. To the right of the pier, a construction site for Pier 42 is visible, featuring a green sports field.

BMCR Resiliency
project will continue
into mid- 2026

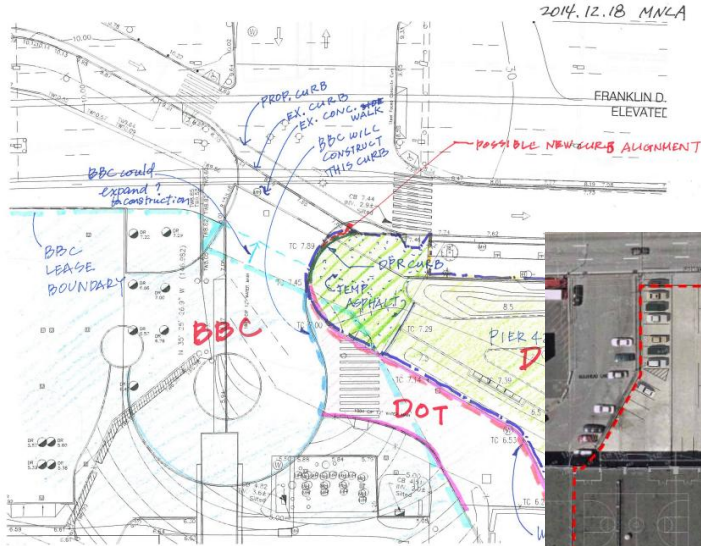
FDR entrance ramp
Continue thru mid-2025

Pier 42

**EDC led: Pier 36 Substructure
Repairs & Mooring Infrastructure
Upgrades**

Basketball City Roundabout

Vehicle solution in the making (2013-present)



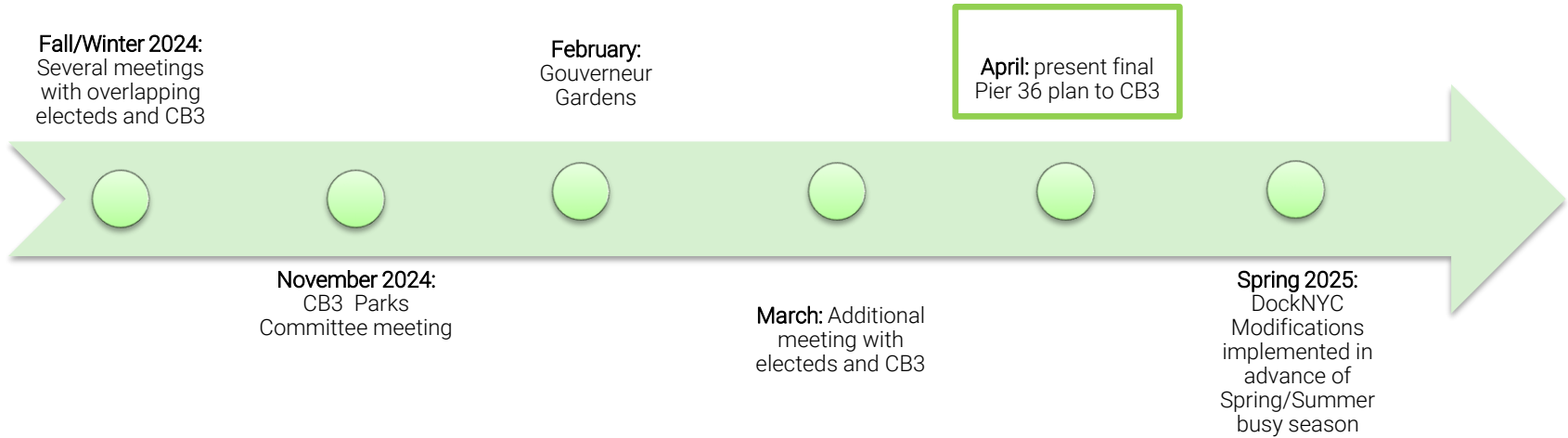
Late 2024



Late 2013 Proposal



Pier 36 Engagement



What We've Heard

- Boat Departures
- Pier 36 Circulation
- Trash collection
- Bathroom access
- Quality of life for surrounding neighborhood/nuisances outside of Pier 36
- On-site beautification
- Security



Modifications

DockNYC Departure Modifications

Category	Current	Modification
Boats per hour	4-5	2 in the evening, after 8PM
Pier accessibility	Accessible 24 hours	No longer publicly accessible for evening departures
Security	More limited presence, pier open 24 hours a day	<ul style="list-style-type: none"> • Every operator to have security guard for every 50 passengers • Customer bag check at north entrance in evening • No south end entrance in evening • Pier to remain open only during DockNYC operating hours • Serve as additional check on intoxication.
Increased DockNYC presence	More limited presence	<ul style="list-style-type: none"> • At least one DockNYC personnel for every departure • Clear instructions to ensure smooth operations and compliance with rules • Will help guide individuals off the pier in orderly fashion and assist with vehicular flow, alongside boat security
Posted departure schedule	Departure schedule not previously posted	Scheduled posted online
Departure time	Last departure at ~midnight	Last departure at 10PM

Basketball City Community Awareness Form

- Filled out as part of the application process and reviewed by EDC
- Intended to provide community with information on event and logistics including dates of operational expected # of attendees; mitigation of potential community impacts such as outdoor activities, alcohol consumption, and vehicular circulation
- Will be distributed to CB, local elected offices, and other groups that request to be on circulation list
- EDC will review and approve their strategy to manage traffic and parking

NYC / EDC

Basketball City Event Community Awareness Form

Please fill out the below form and send to 212@nyc.gov as part of the Temporary Place of Assembly application. This form will be distributed to Community Board 3 as well as the offices of the local City Council Member, Manhattan Borough President, State Assembly Member, State Senator, and any other local stakeholders who request to be a part of circulation.

1. Event name

2. Event description

3. Please describe the set up and staging process (e.g., setup, staging, teardown, etc) for your event including expected dates and hours of work

4. What are the dates and hours of your event?

5. How many attendees do you expect at your event over its duration?

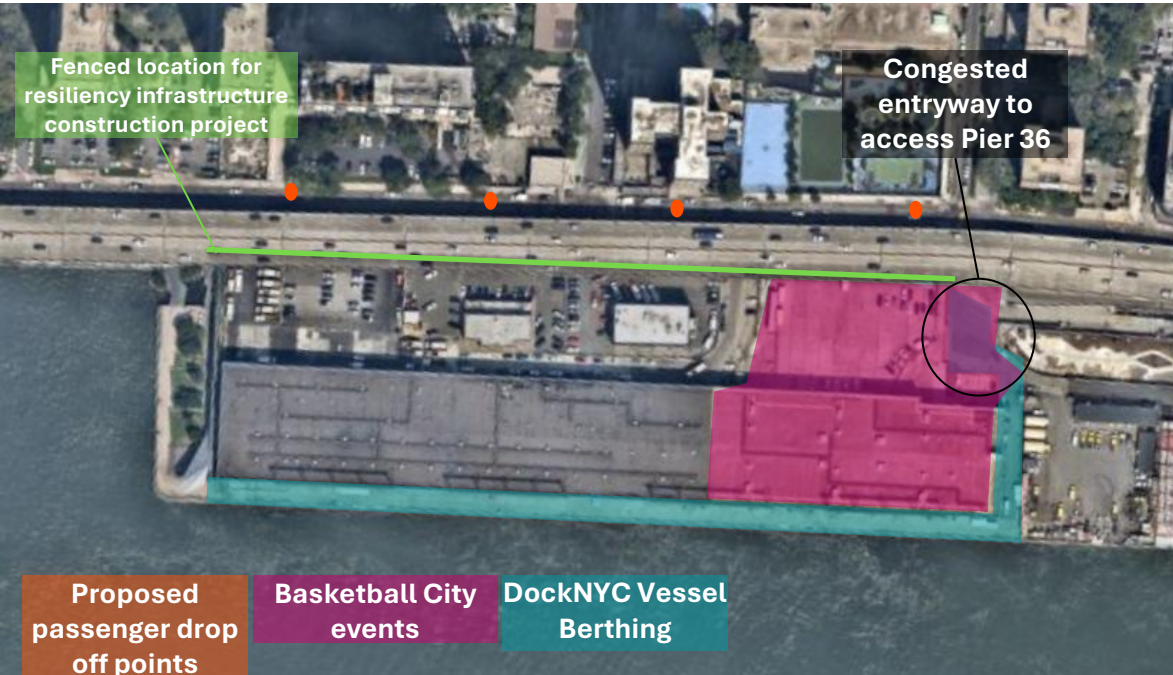
6. What is the maximum number of attendees you expect at any given time?

7. Do you plan to have outdoor activities or alcohol consumption? If so, how will you mitigate potential community impacts of these activities including noise control and potential spillover outside the premises?

8. How do you plan to mitigate potential issues around parking and vehicular circulation?

9. Please provide contact information (email and/or phone number) for community concerns

Proposed For Hire Vehicle Drop-off/Pick-up Modifications



Basketball City Corporate events

- Pick up and drop off can be designated at the pink area
- Parking lot operator can manage incoming/departing traffic flow

DockNYC Vessel arrivals/departures

- Vessel departures and arrivals similarly happen with very close proximity to another
- pick up and drop off should be consistent Fri-Sun evenings where the majority of vessel passengers arrive and depart by FHV

Planned Esplanade Upgrades

This season DockNYC will be upgrading several esplanade improvements including:

- Upgrading existing esplanade furniture including benches, planters and shade structures.
- Reducing the number of slips and repairing associated gates and fence.
- Engaging potential vendors to activate other uses on the esplanade.

NYPD

- NYPD has stepped up enforcement of South St./surrounding neighborhood including traffic, quality of life, urination, illegal vending, and littering
- Receive boat schedule and routinely conduct DWI operations around the area
- Traffic safety enforcement plan implemented following July 2024
- Have been made aware of illegal tour bus parking and will monitor going into busy season

How to reach out

Contacts to reach out to

EDC: bkuhn@edc.nyc

DockNYC: liloia@nywaterway.com

Basketball City: bruce@basketballcity.com

NYPD: christopher.satriano2@nypd.org or (212) 477-7301

Vessel schedule

<https://www.docknyc.com/site-availability>

NYPD 7th Precinct Outreach:

- Information on upcoming community meetings and additional Neighborhood Coordination Contacts: <https://www.nyc.gov/site/nypd/bureaus/patrol/precincts/7th-precinct.page>
- Monthly Community Council meetings typically every second Wednesdays at precinct

Questions