

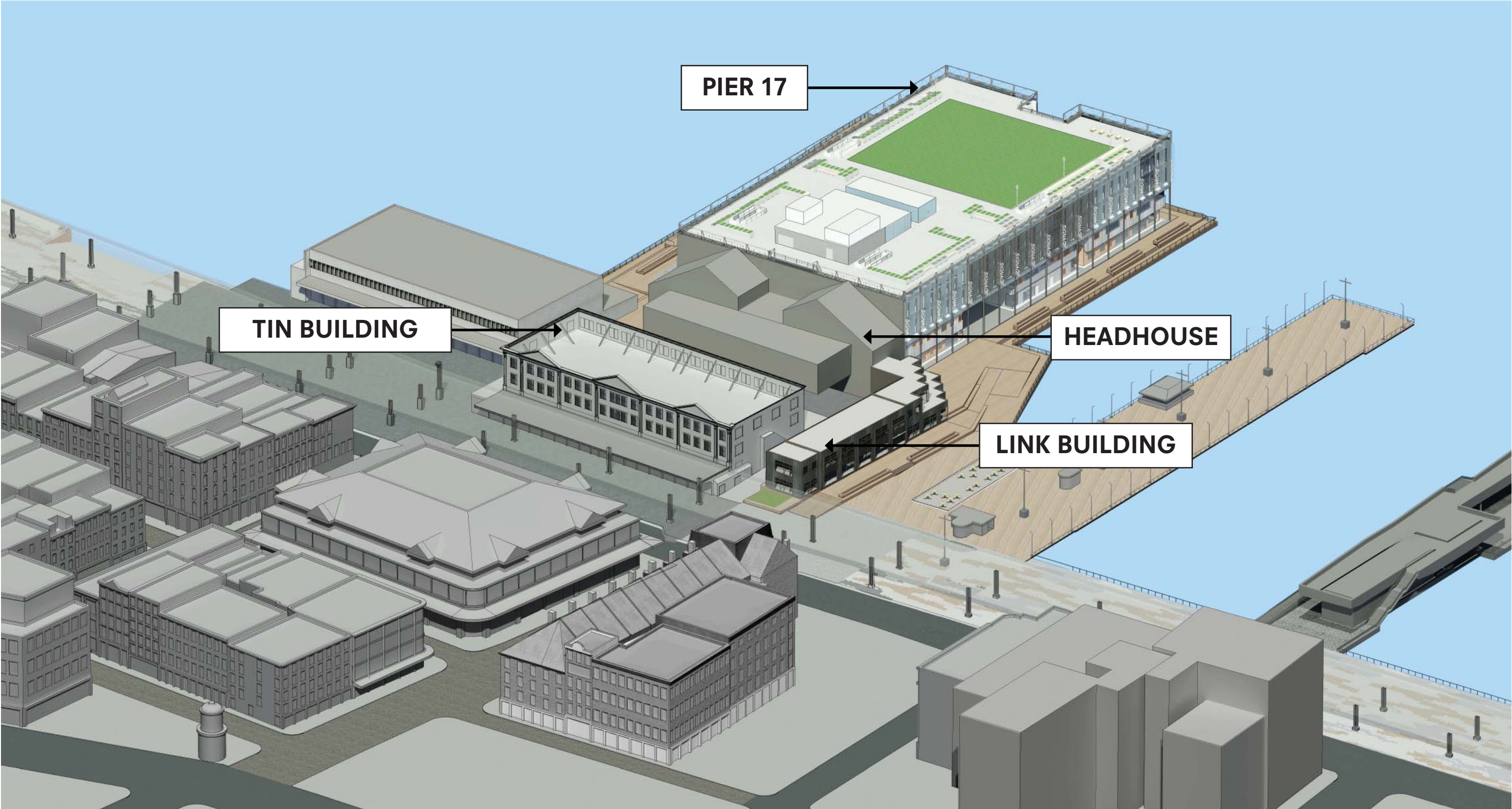
sh p

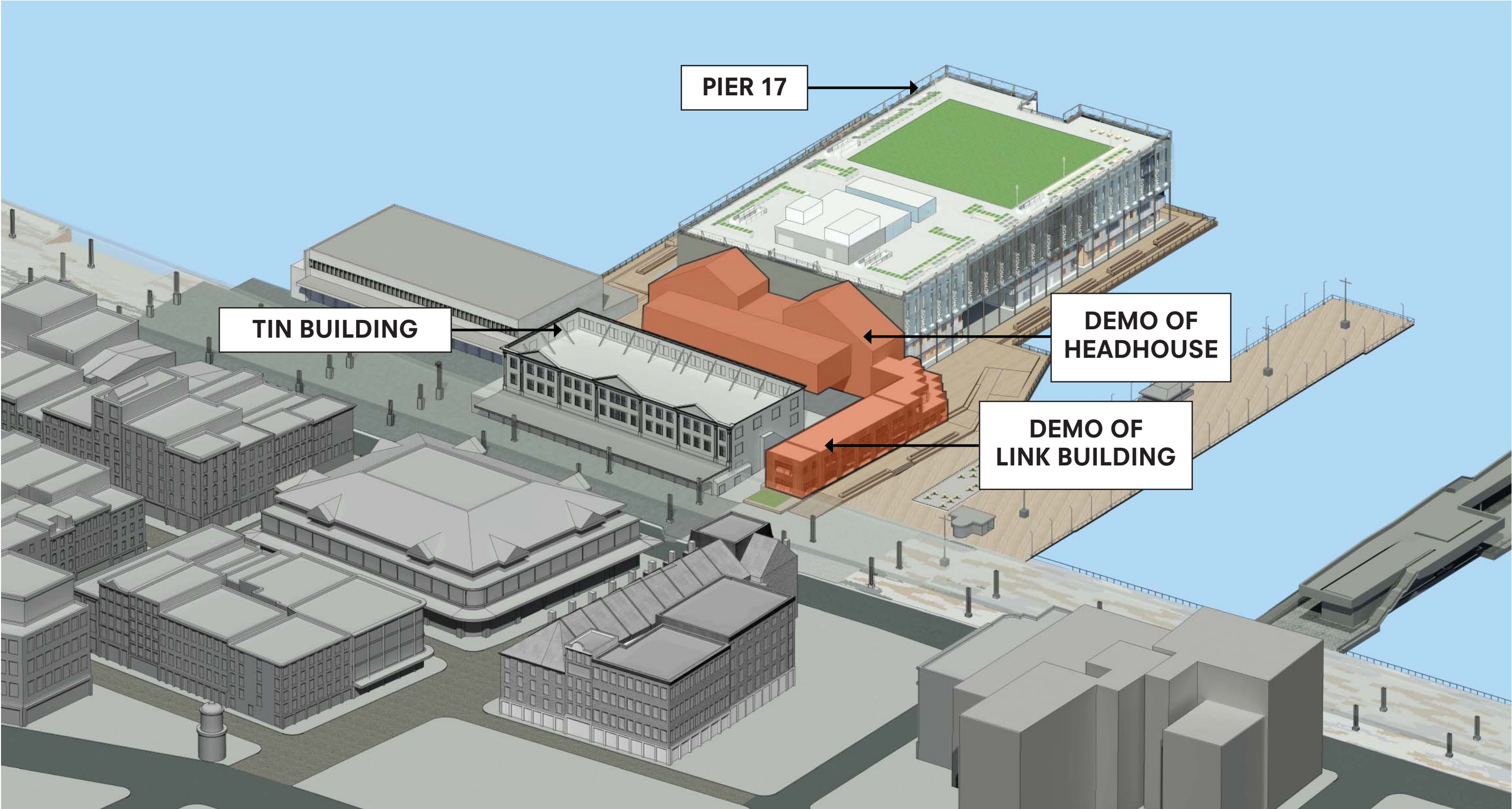
SOUTH STREET SEAPORT

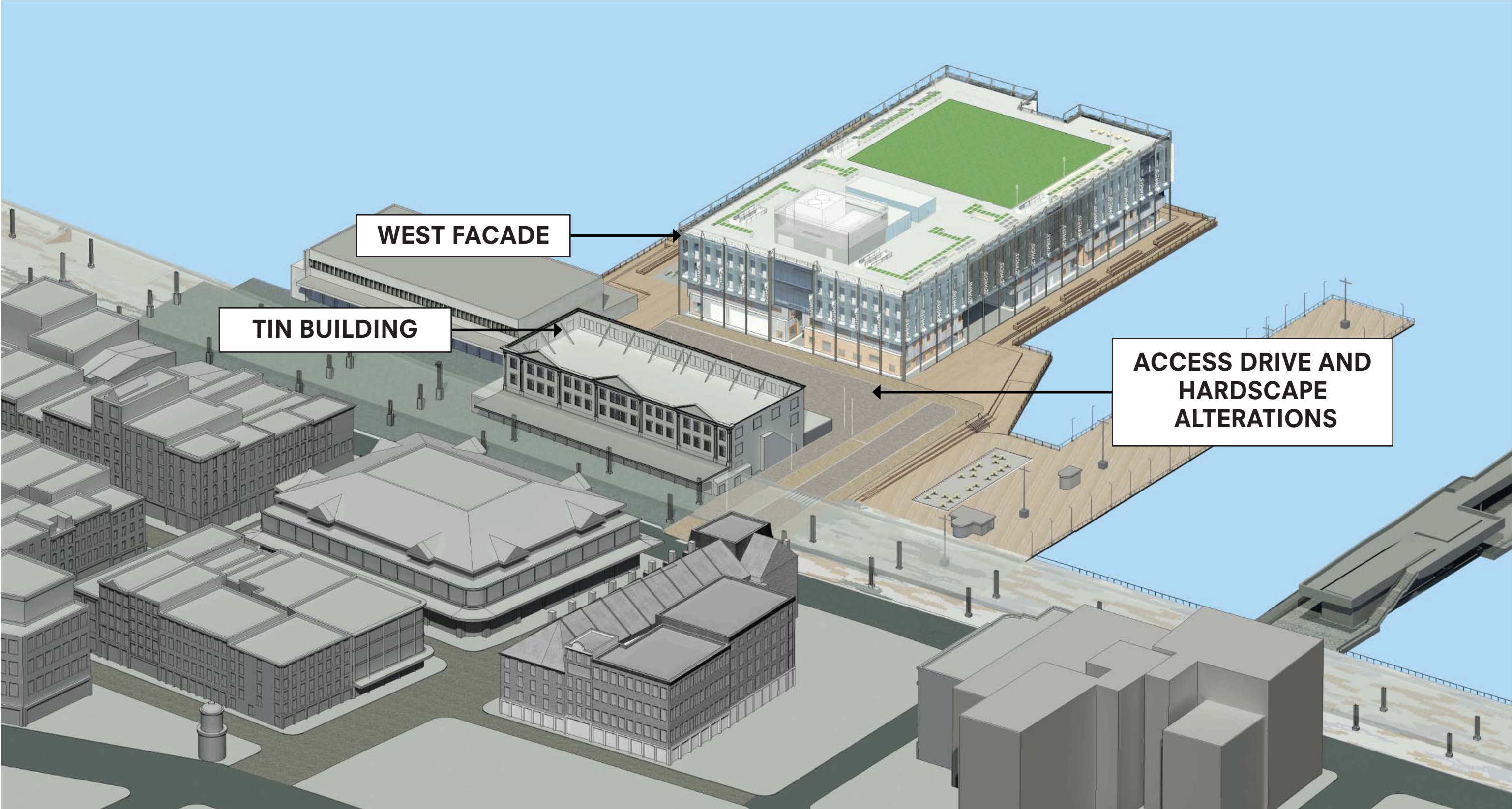
CB1 MEETING

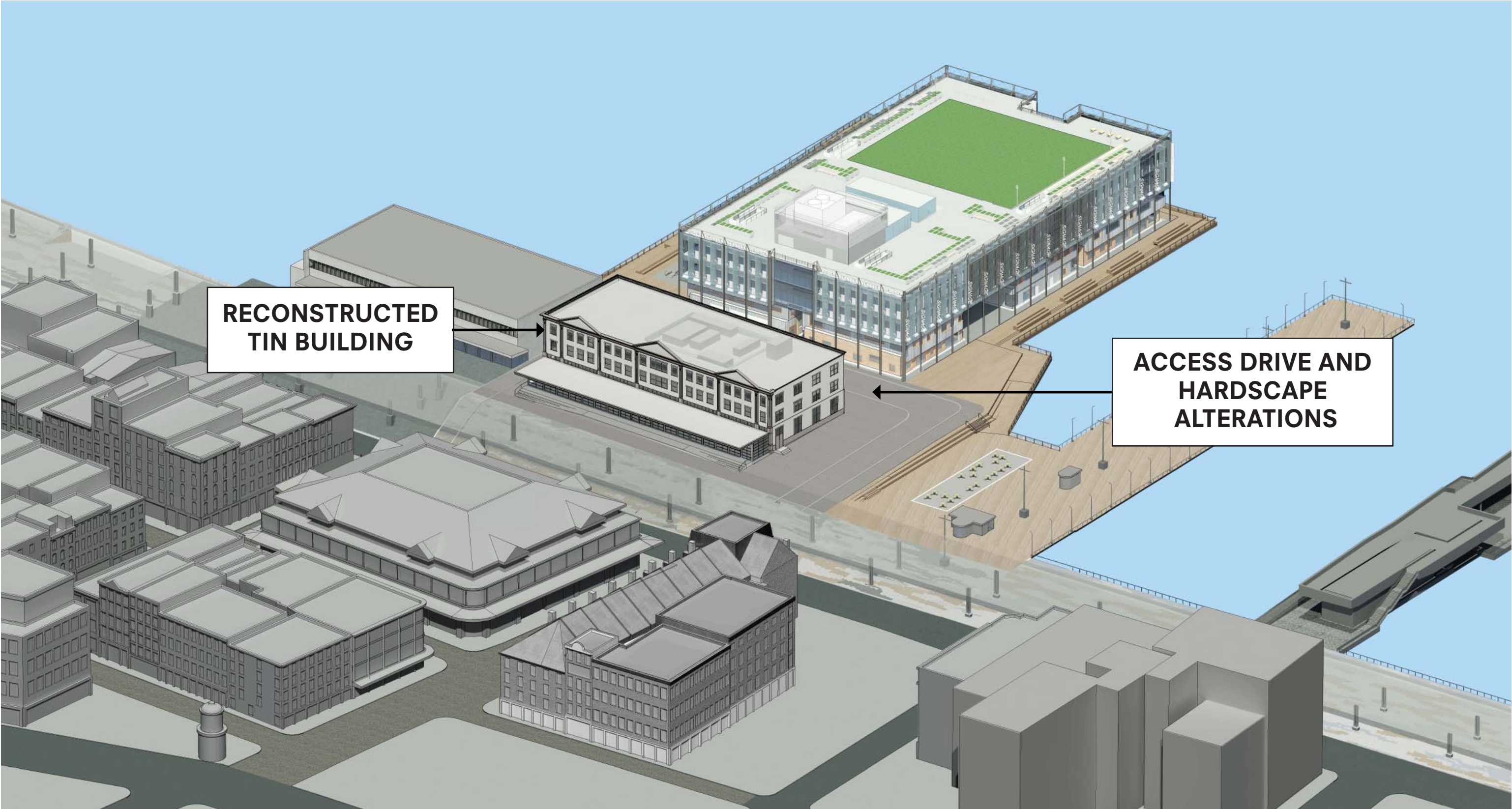
JANUARY 19, 2016

PROPOSED MODIFICATIONS

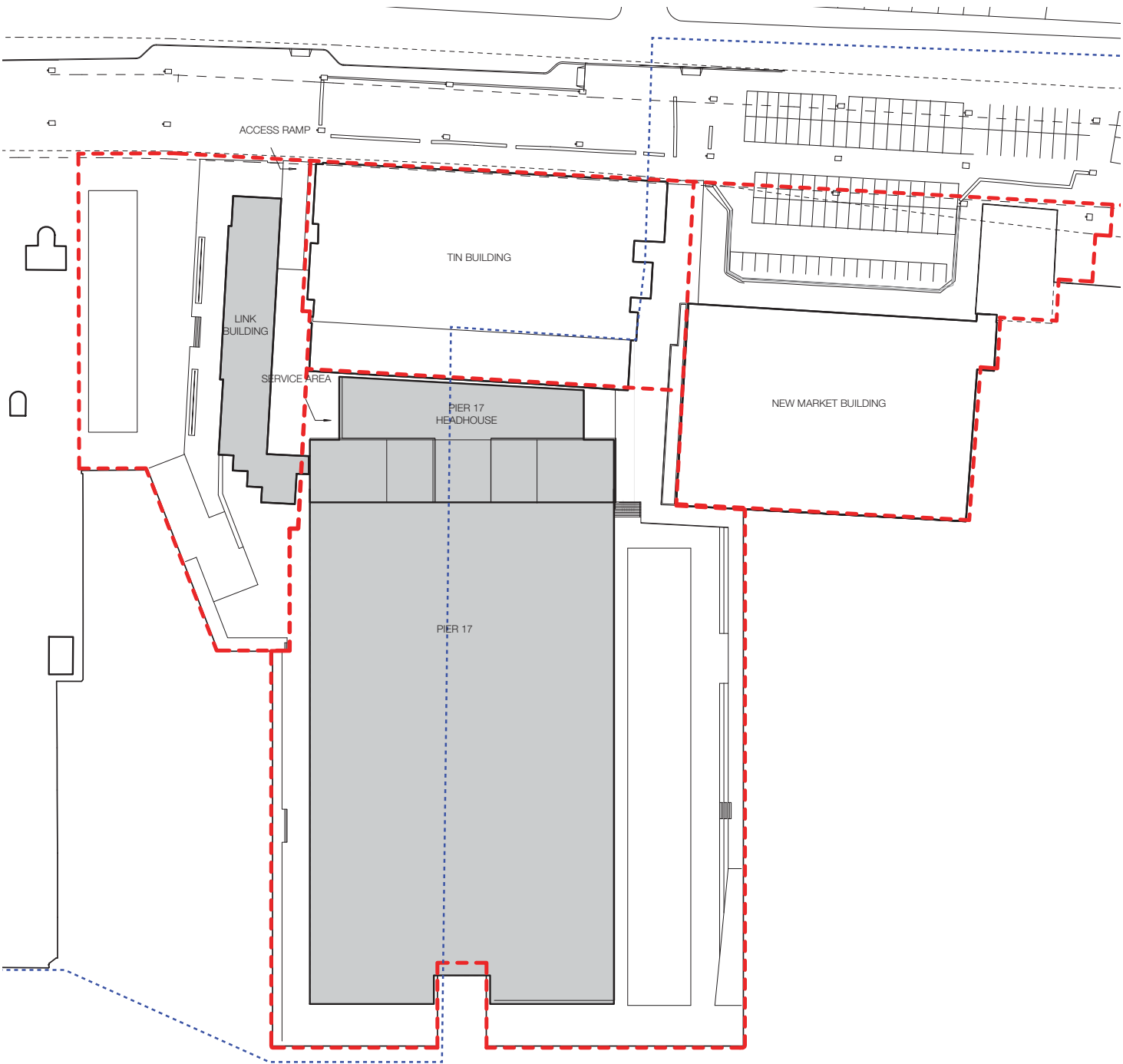








SOUTH STREET SEAPORT// PIER 17 - 2013 APPROVED

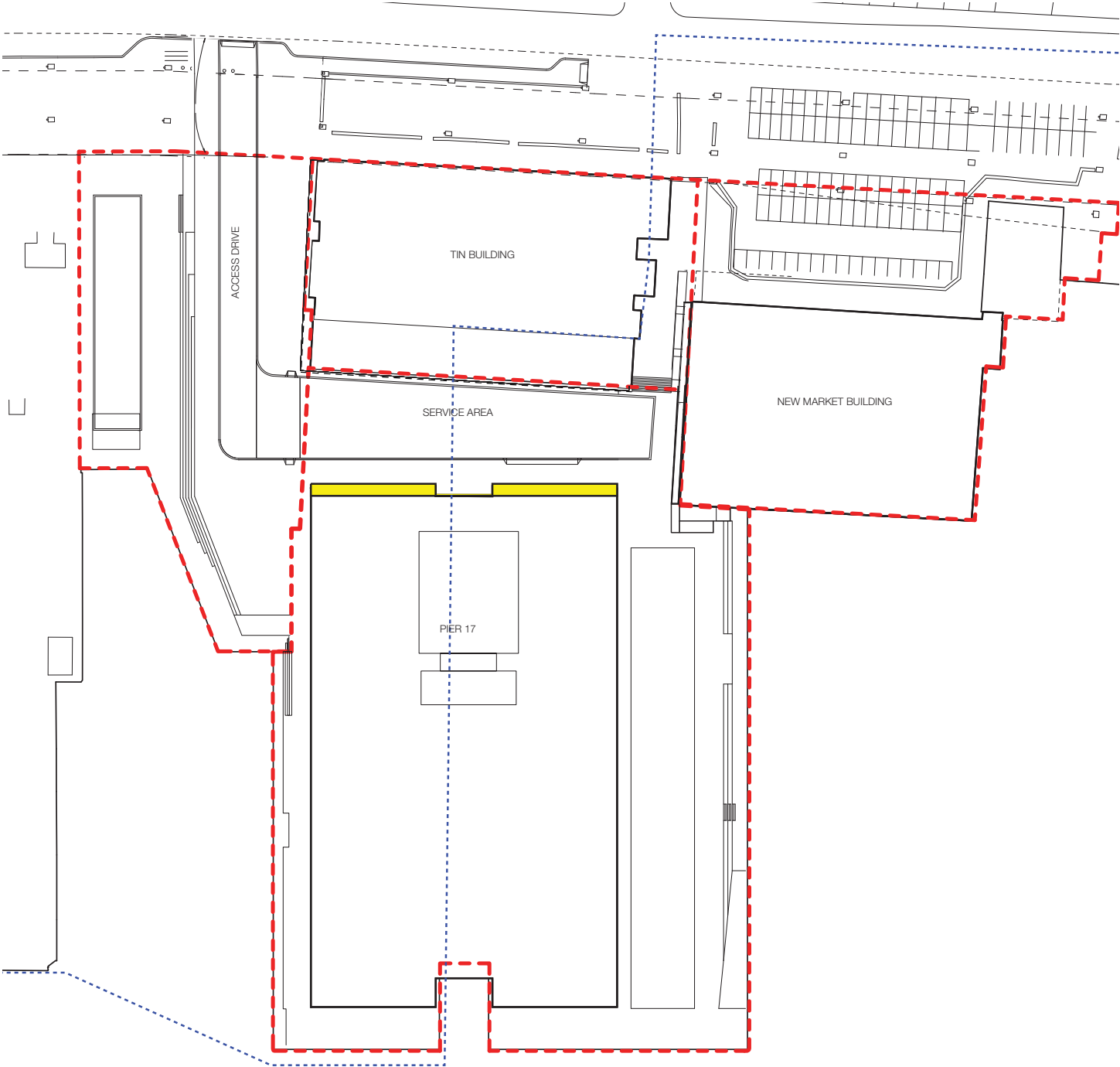


KEY

- APPROVED PIER 17 CONSTRUCTION
- NEW CONSTRUCTION
- HISTORIC DISTRICT LINE

- PIERS AND PLATFORMS
- EXISTING TIN BUILDING

SOUTH STREET SEAPORT// PIER 17 - 2015 LPC APPROVED PLAN

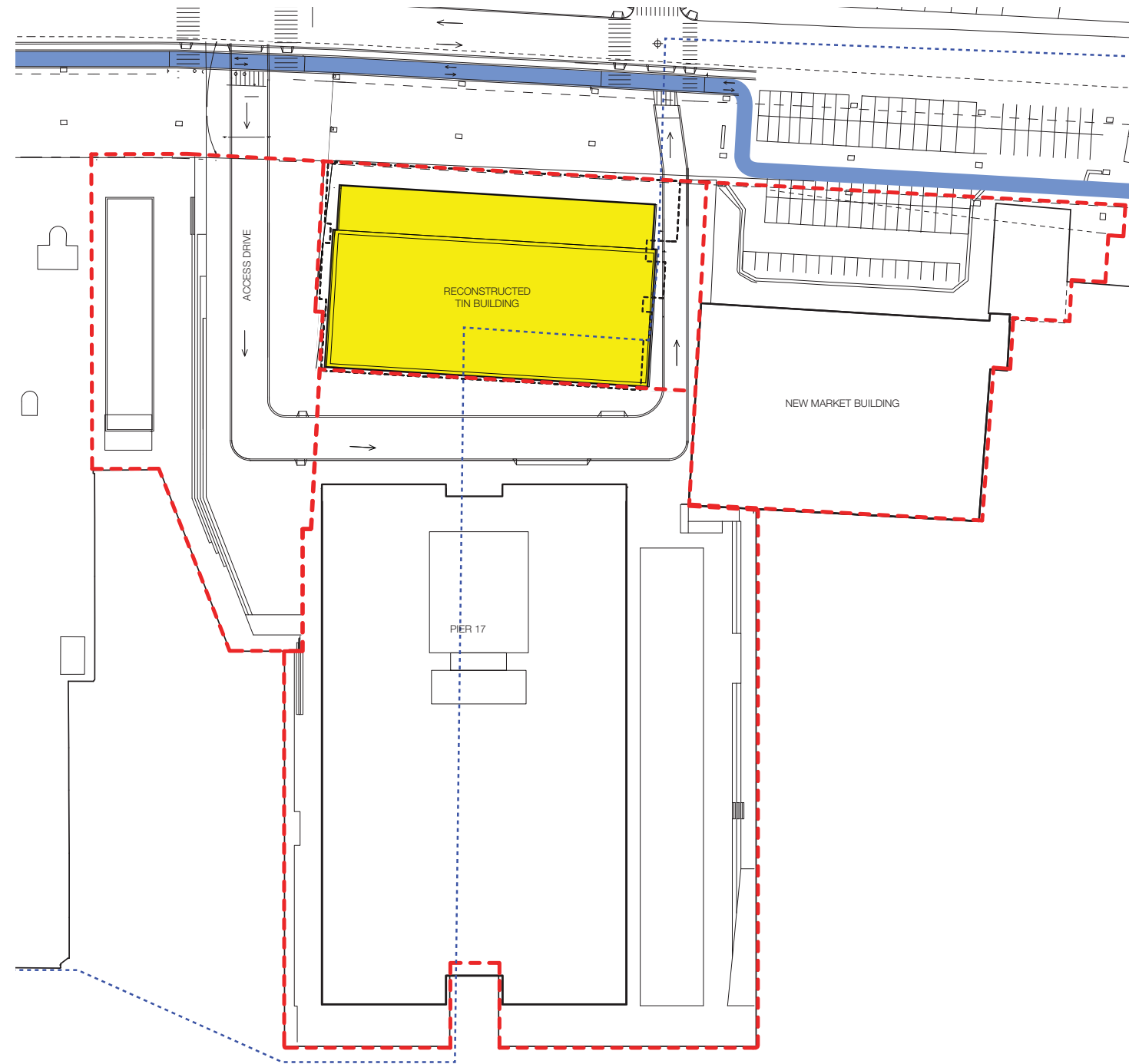


KEY

- APPROVED PIER 17 CONSTRUCTION
- NEW CONSTRUCTION
- HISTORIC DISTRICT LINE

- PIERS AND PLATFORMS
- EXISTING TIN BUILDING

SOUTH STREET SEAPORT// PIER 17 - PROPOSED PLAN



KEY



APPROVED PIER 17
CONSTRUCTION



NEW CONSTRUCTION



HISTORIC DISTRICT LINE



PIERS AND PLATFORMS



EXISTING TIN BUILDING



PROPOSED BIKE LANE

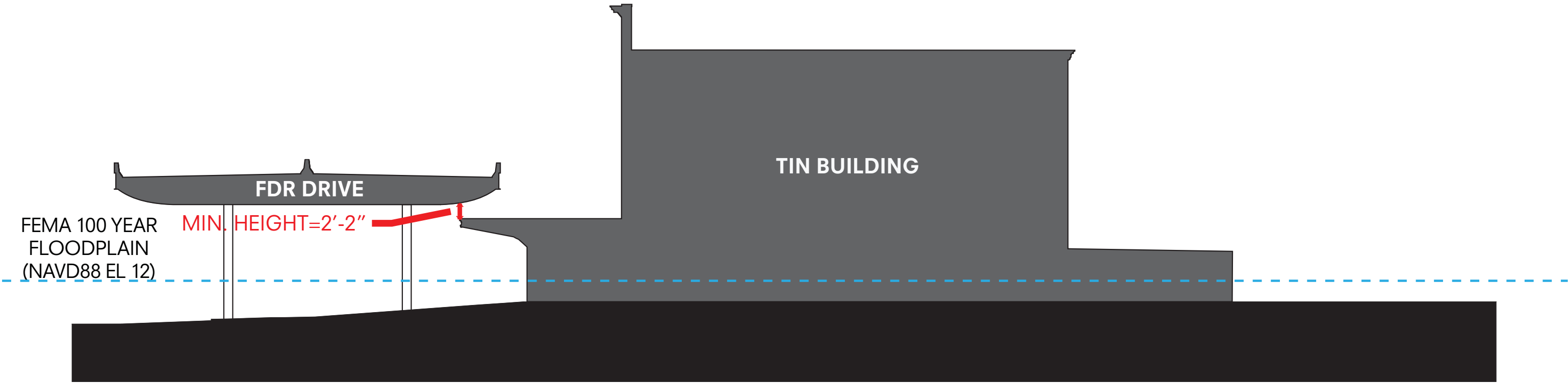
SOUTH STREET SEAPORT // TIN BUILDING // REASON FOR MOVE

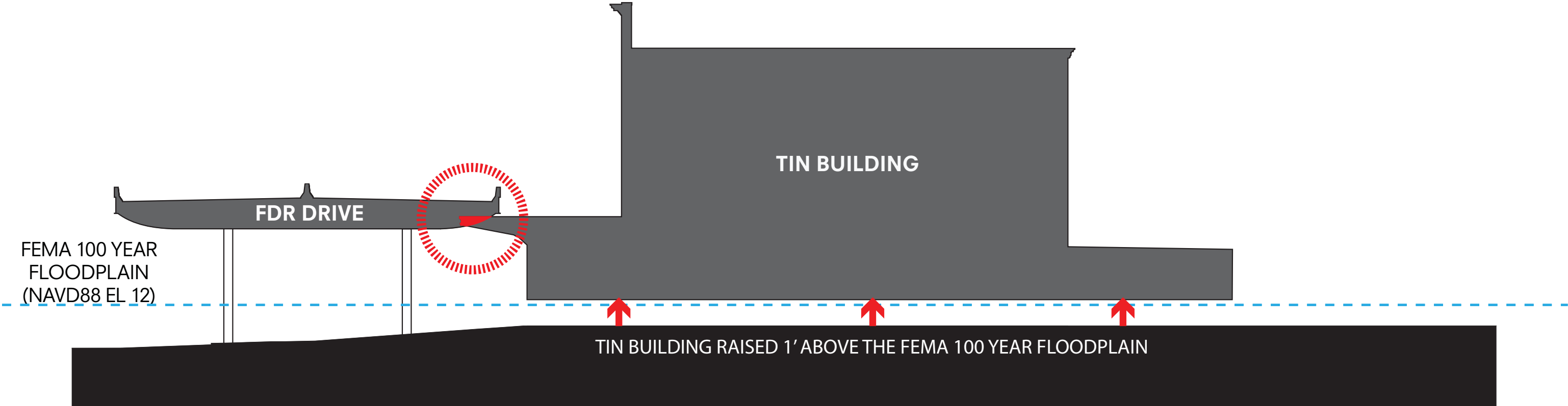


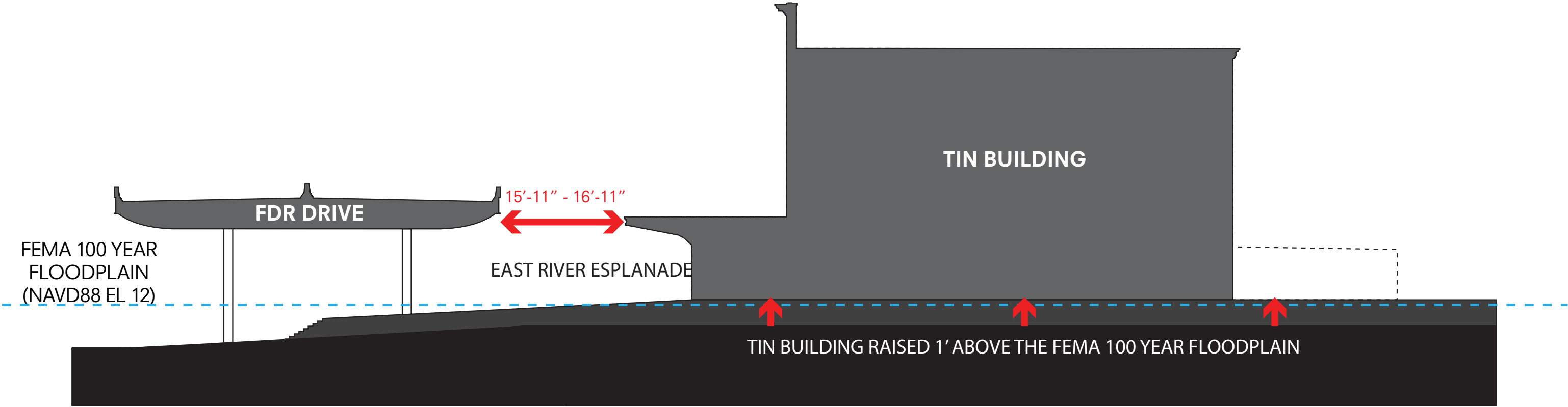
1940: The Tin Building’s historic context in the wide expression of South Street. Today, the building is isolated from its historical connections to the street by the FDR (ca. 1954). (NYC MA)



2012: Flood waters on South Street from Superstorm Sandy.





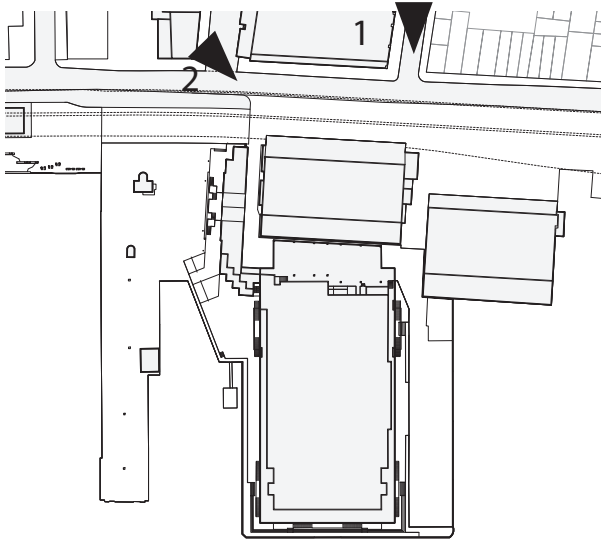


TIN BUILDING



C. 2012: Tin Building and Pier 17.

SOUTH STREET SEAPORT // TIN BUILDING // EXISTING CONDITIONS

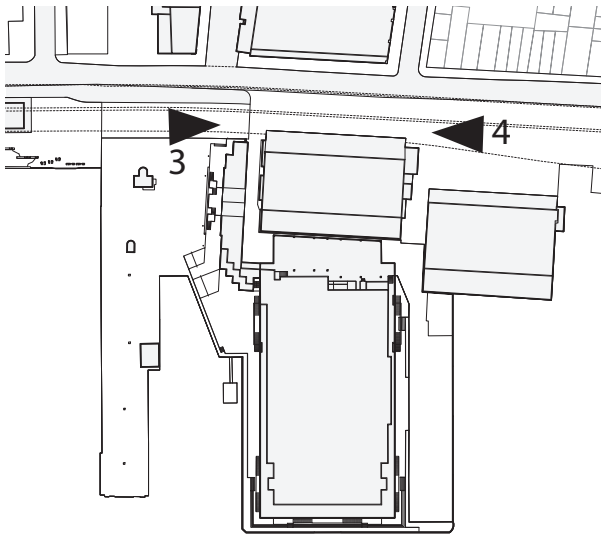


1 View East along Beekman, showing Pier 17 beyond the Tin Building



2 View from South Street looking North towards the FDR and Tin Building

SOUTH STREET SEAPORT // TIN BUILDING // EXISTING CONDITIONS

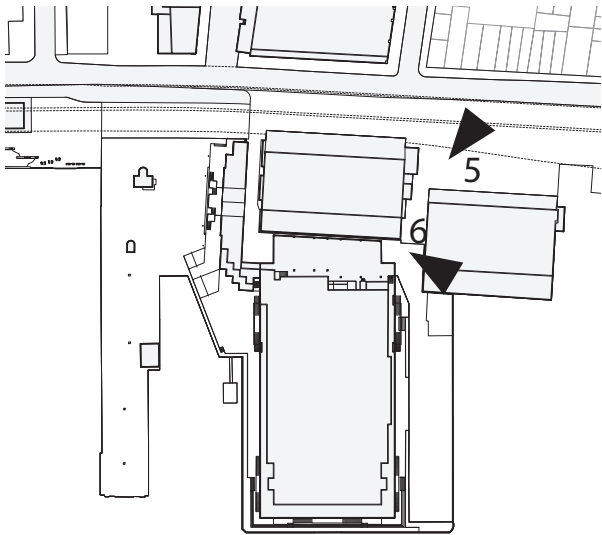


3 View North along South Street showing the Link Building in the foreground



4 View of the North and West facades of the Tin Building from under the FDR

SOUTH STREET SEAPORT // TIN BUILDING // EXISTING CONDITIONS



5 View East towards the New Market Building and Tin Building from under the FDR



1937: Showing relationship of building to street and working waterfront. (NYPL)



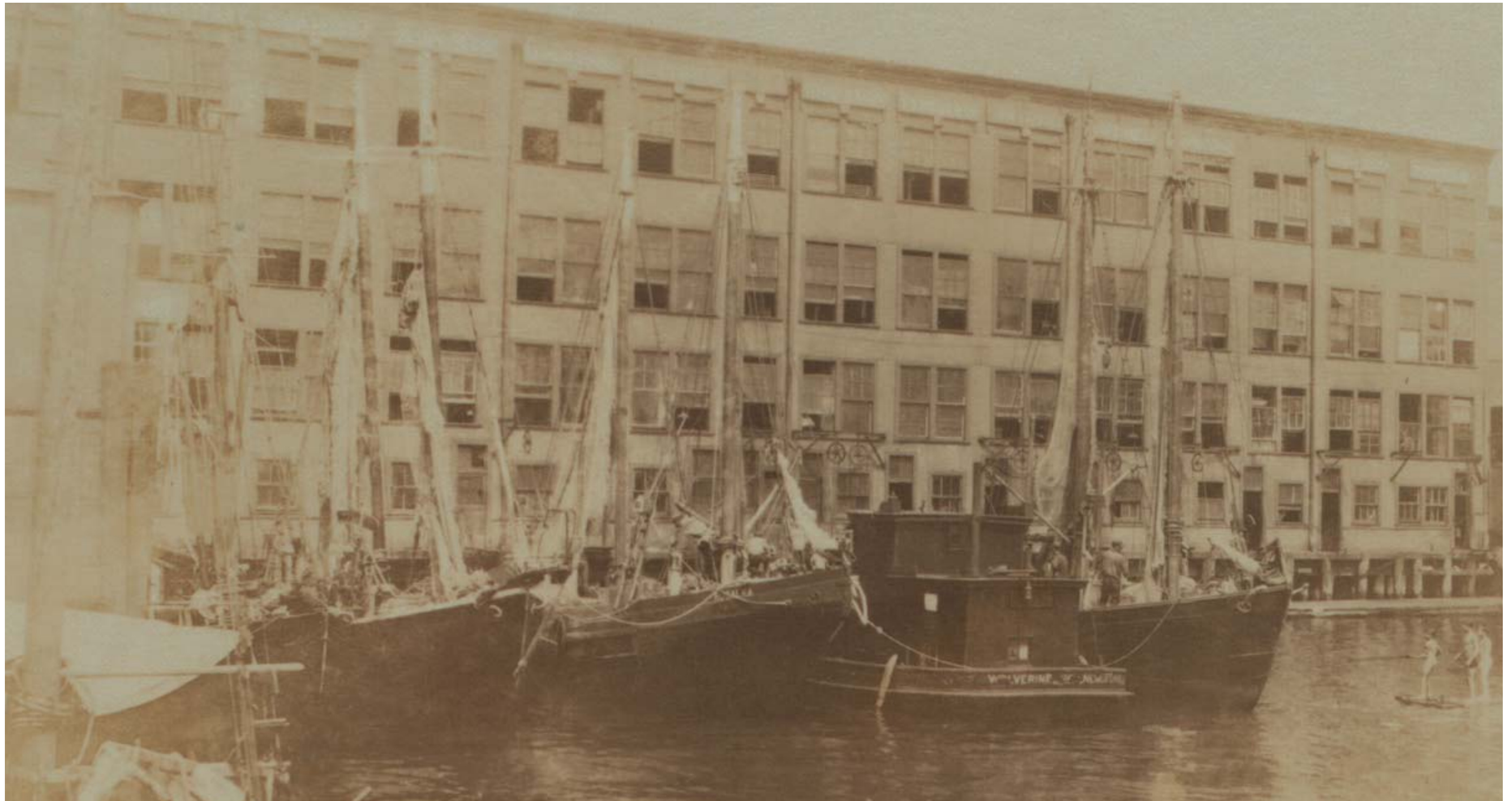
1940: The Tin Building's historic context in the wide expression of South Street. Today, the building is isolated from its historical connections to the street by the FDR (ca. 1954). (NYC MA)



FULTON FISH MARKET, 1907.



1943: Showing detail of Tin Building canopy construction, transparency at the ground floor and relationship to the street. (LOC)



1925: Fulton Fish Market historically played an essential role on the water side for receiving fish, and on the land side for selling fish, until the building was separated from the East River by the contemporary Pier 17 structure (ca. 1983). (NYPL)



1981: Aerial view of seaport area showing the Tin Building isolated from its street context but retaining its presence on the East River. Note installation of refrigeration shed. (HAER, LOC)

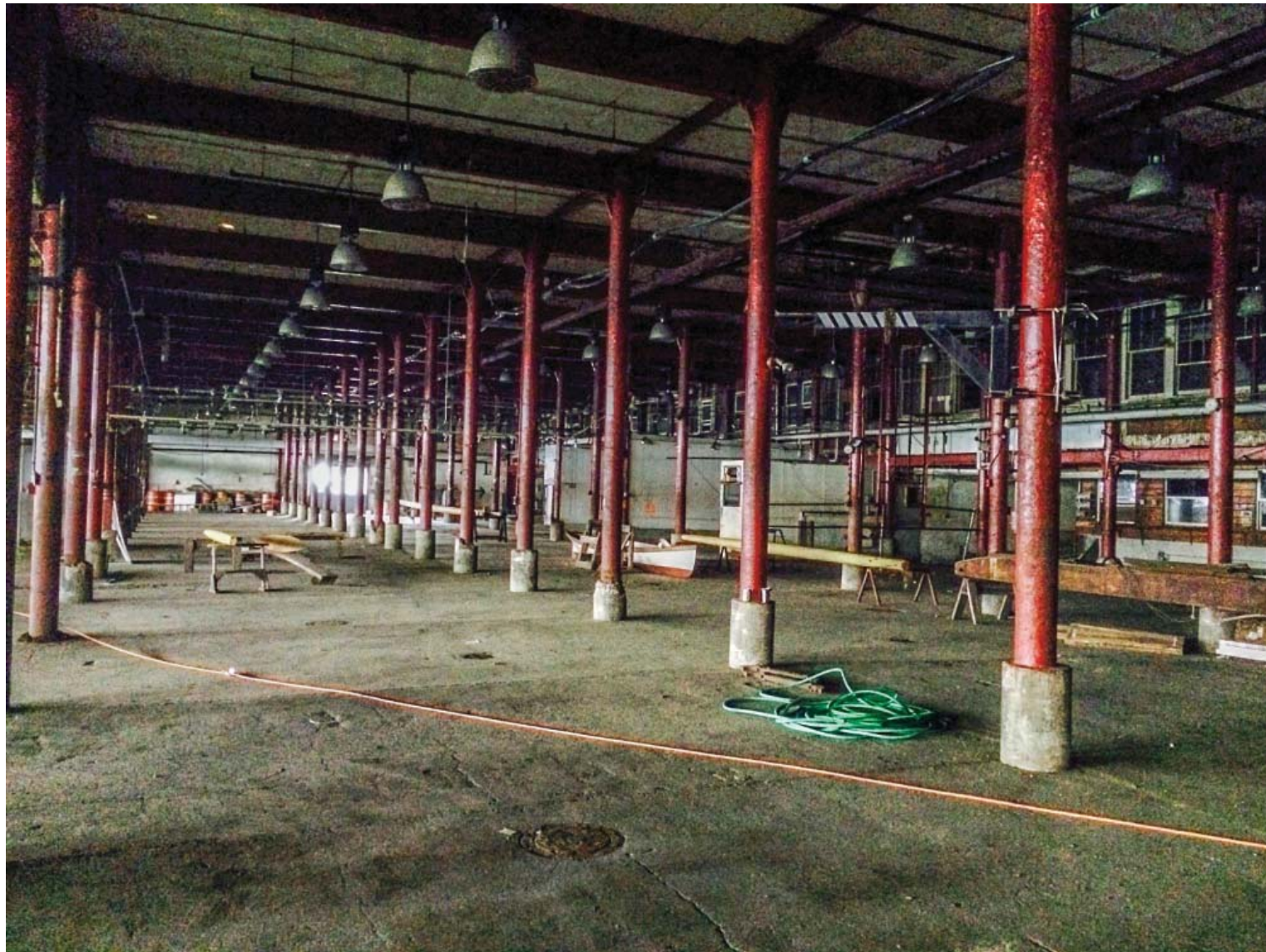


C. 2012: Tin Building and Pier 17.

TIN BUILDING - ENGINEERING

SOUTH STREET SEAPORT // TIN BUILDING // LIMITATIONS OF EXISTING LARGE STRUCTURE

- Dimensions = approximately 120' x 220'



Cast iron columns



Typical building move

SOUTH STREET SEAPORT // TIN BUILDING // CURRENT CONDITION OF PLATFORM PIERS

- Tin Building platform in poor condition in spite of previous repair attempts.



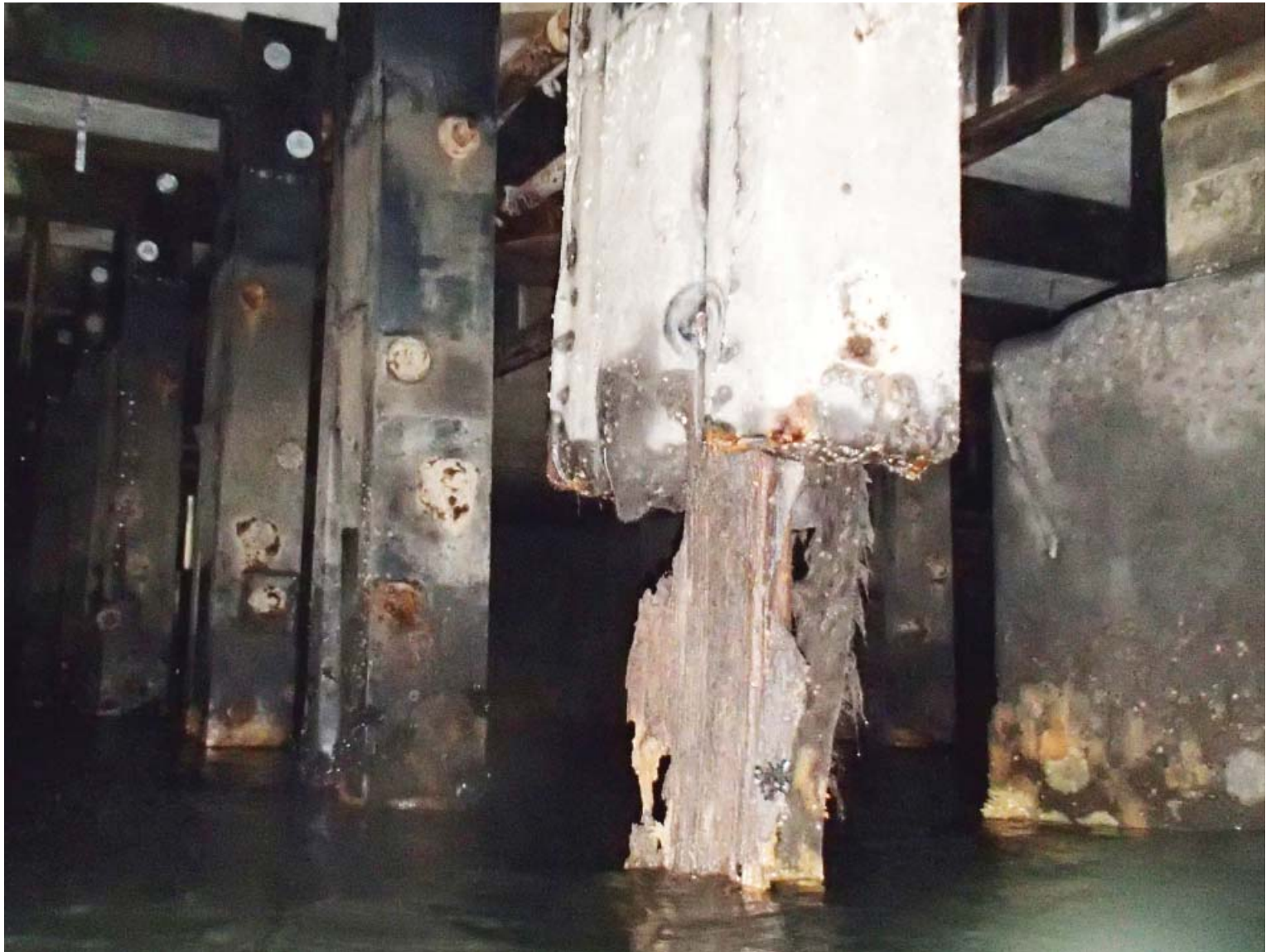
Tin Building in-water structure. Crushed pile cap at B18.



Tin Building in-water structure. Severely rotted timber framing with ~80% section loss at E15.



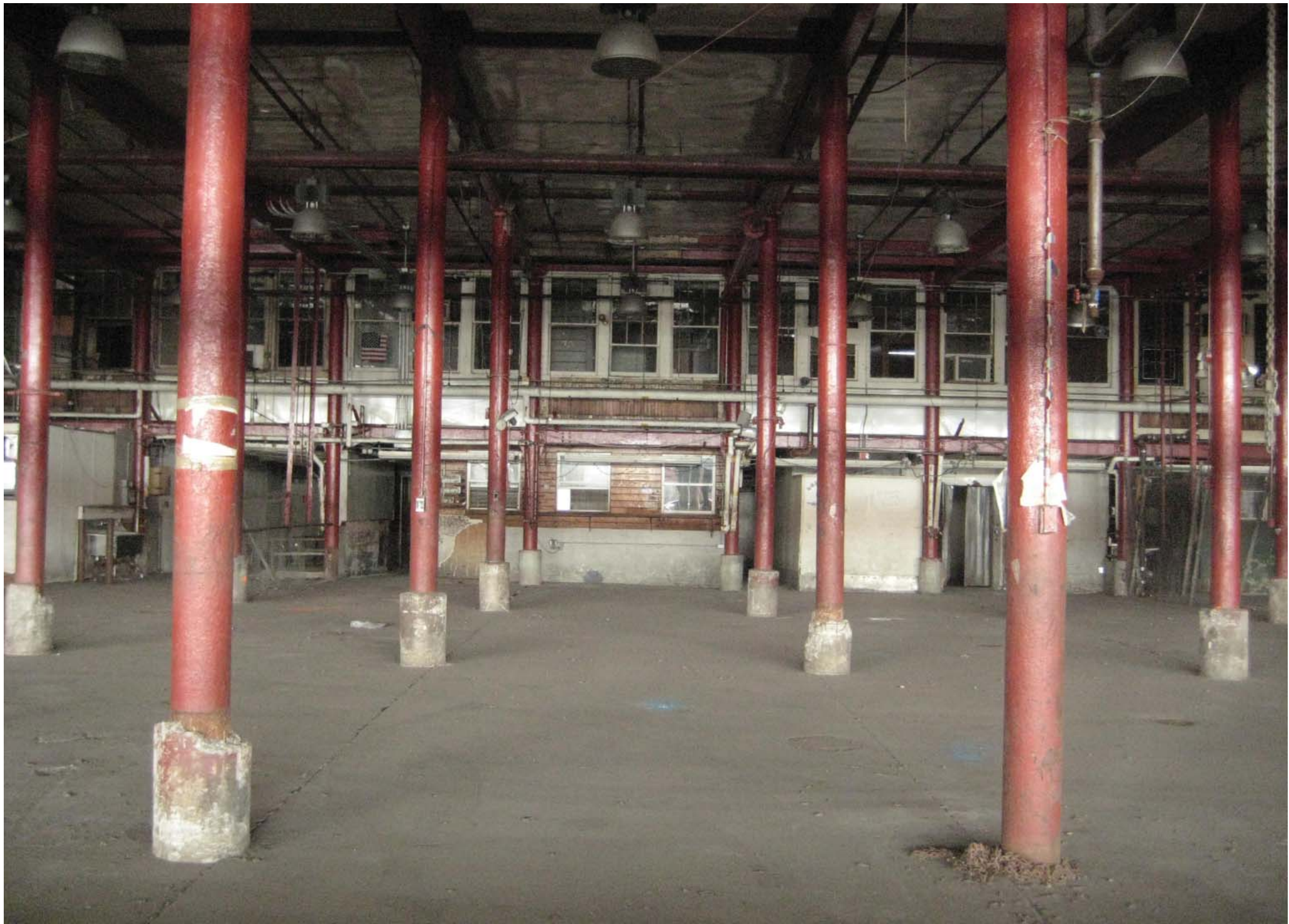
Tin Building in water structure. Rotted timber pile post at F11. Remnants of a pile wrap are identified by the yellow arrow.



Tin Building in-water structure.



Tin Building in water structure.



Interior today.

SOUTH STREET SEAPORT // TIN BUILDING // STRUCTURAL INTEGRITY

- Cast iron is a brittle material.
- Buildings of this era lack a discernible lateral system.
- Structure has weak tongue and groove diaphragm(s).



Tongue and groove wood floor



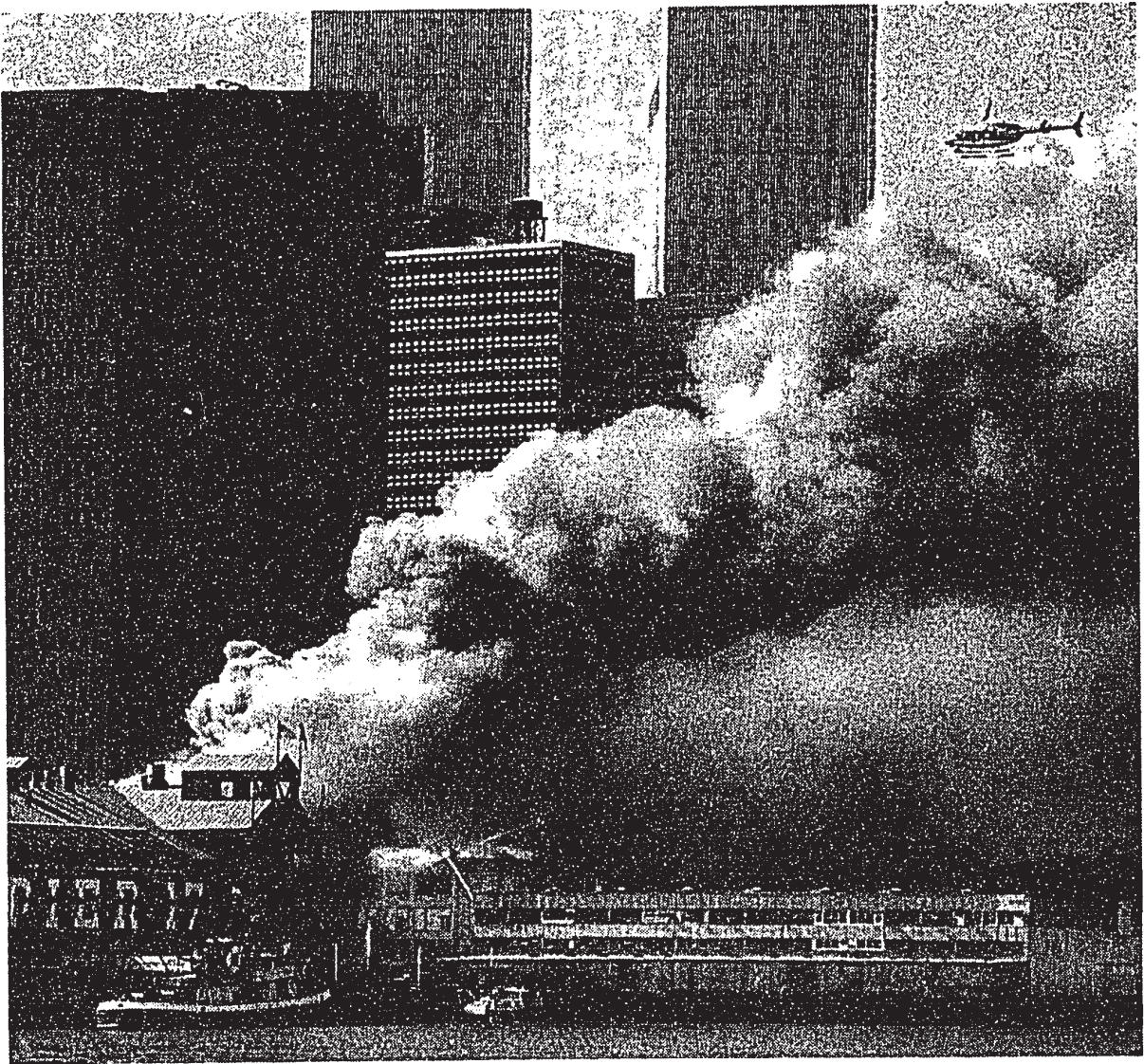
Penetration in floor

TIN BUILDING - RECONSTRUCTION

Fire Sweeps Through Major Building at Fulton Fish Market

By JOE SEXTON

New York Times (1857-Current file); Mar 30, 1995; ProQuest Historical Newspapers The New York Times (1851 - 2004)
pg. A1



Don Hogan Charles/The New York Times

Fire at Fulton Fish Market Prompts Investigation

Smoke billowing from a fire that destroyed a building at the Fulton Fish Market yesterday. Coming as city officials moved to seize control of the market, the fire immediately prompted investigations. Page B1.

Reproduced with permission of the copyright owner. Further reproduction prohibited without permission.

Fire, 1995.



Fire, 1995.



Fire, 1995.



Fire, 1995.



GFRP pediments and cornice



Blocked windows & exposed fastener siding

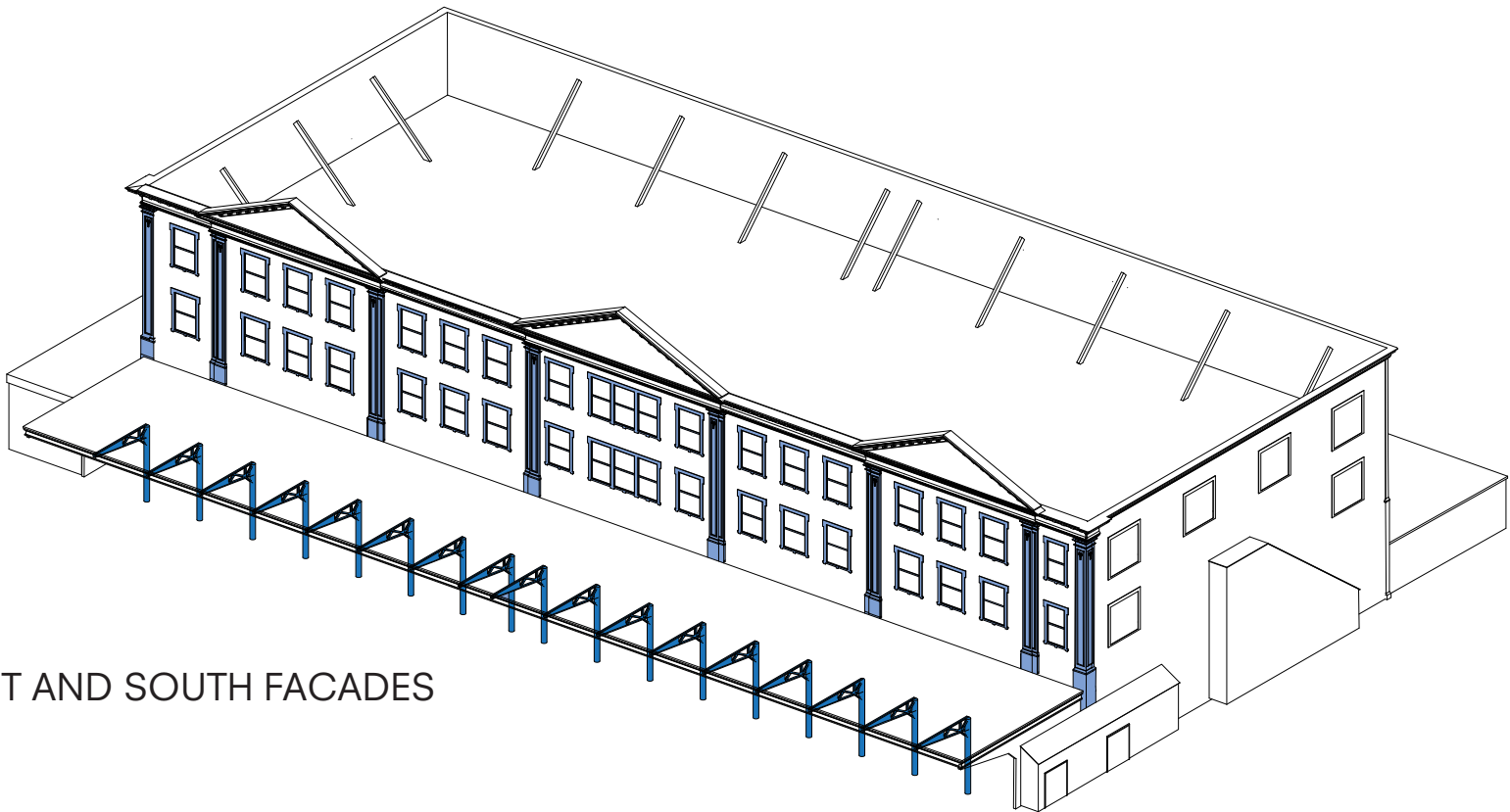


GFRP pediments and cornice

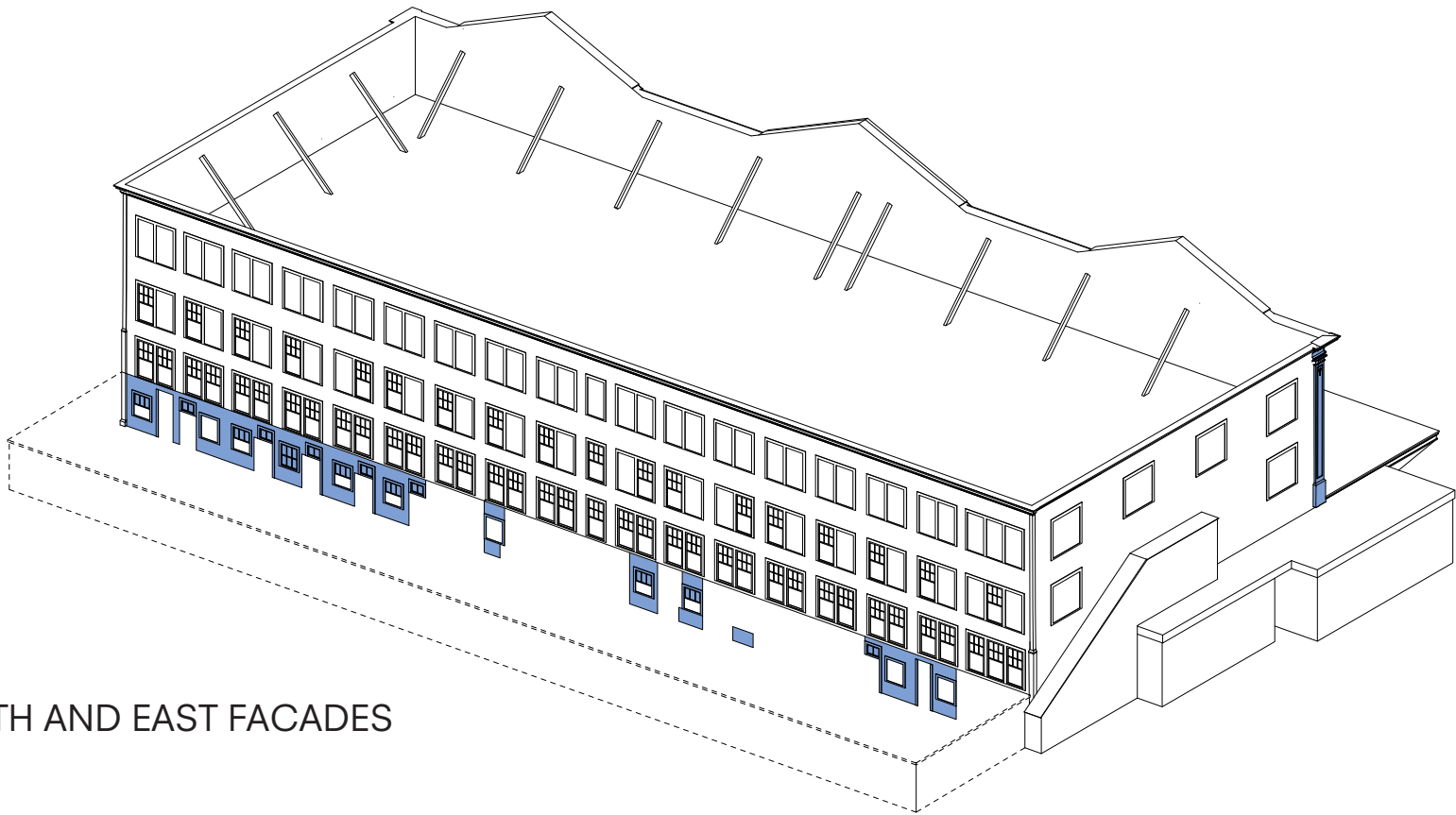


Existing Tin Building third level

SOUTH STREET SEAPORT // TIN BUILDING // EXISTING ORIGINAL CLADDING ELEMENTS



WEST AND SOUTH FACADES



NORTH AND EAST FACADES

- EXISTING ORIGINAL CLADDING ELEMENTS
- EXISTING ORIGINAL EXTERIOR COLUMNS



Existing condition of window surrounds



Detail view of rusted window surround



Tin Building rear facade, 1943.

SOUTH STREET SEAPORT // TIN BUILDING // REAR FACADE WITH ORIGINAL REMAINING FABRIC

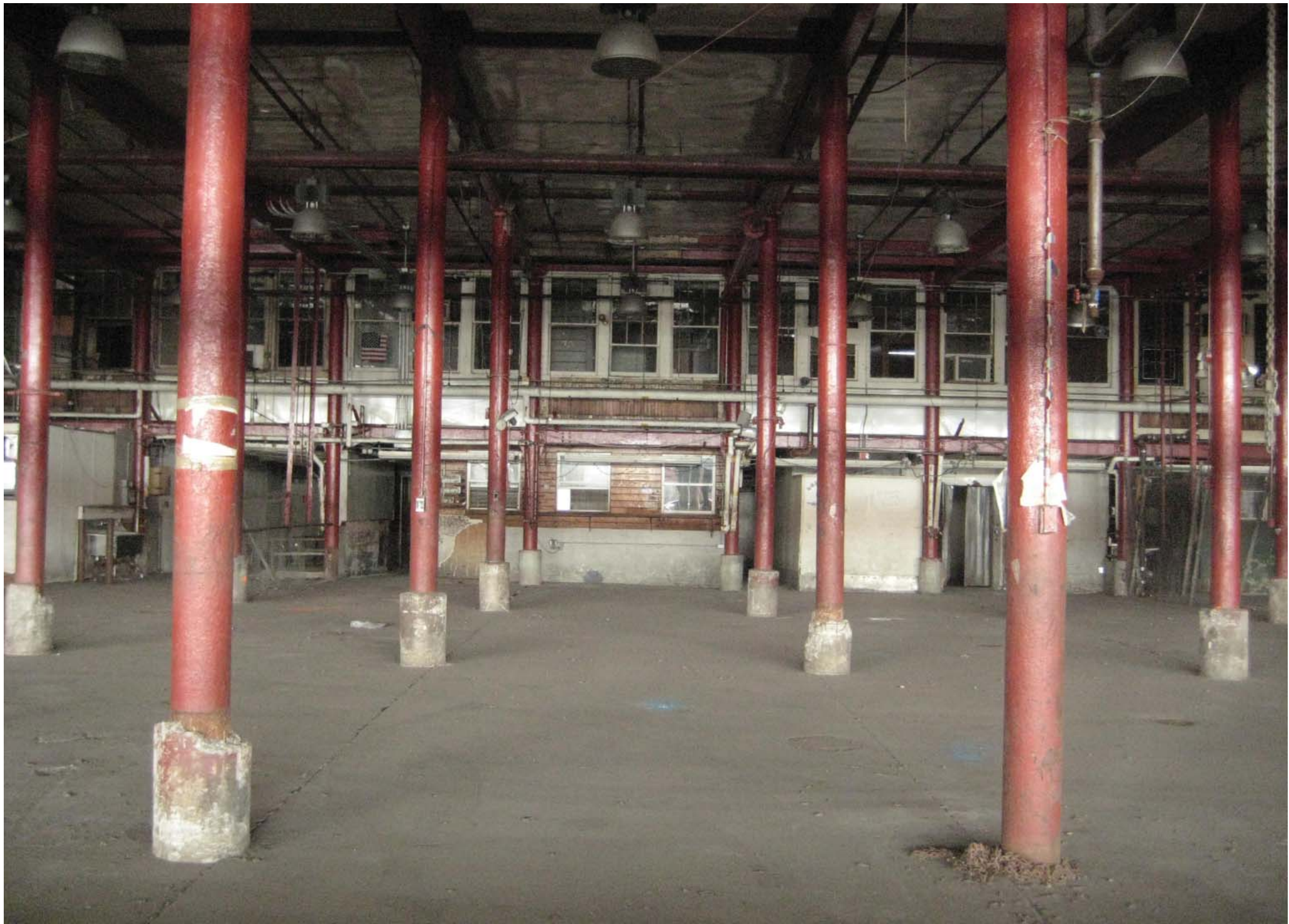




Existing West canopy and supports

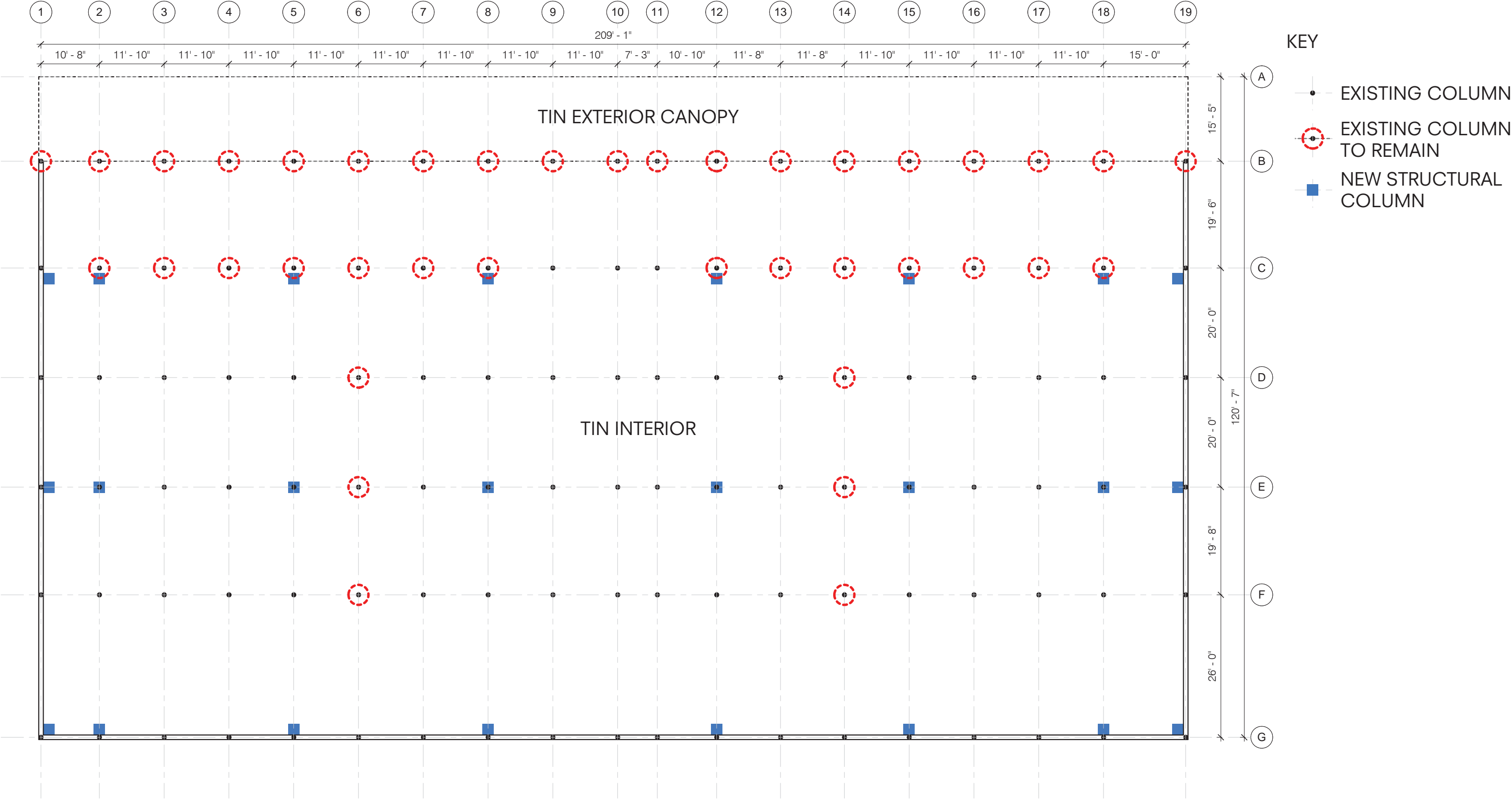


Roll down gates showing interior beyond



Tin Building Interior today.

SOUTH STREET SEAPORT // TIN BUILDING // INTERIOR COLUMNS // GROUND LEVEL // COLUMNS TO REMAIN



HARDSCAPE

SOUTH STREET SEAPORT // HARDSCAPE // PROPOSED MATERIAL PALETTE



PRECAST PAVER



PRECAST PAVER



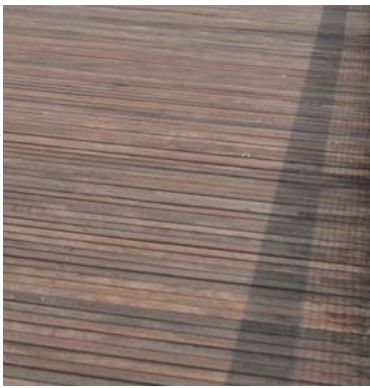
PRECAST PAVER
CROSSWALK



CURB



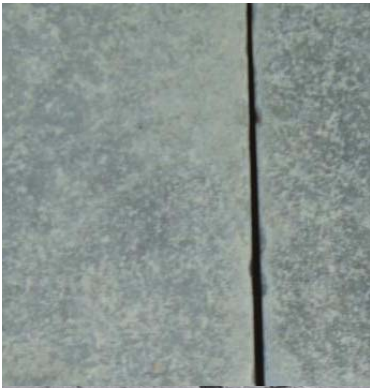
ESPLANADE HEX
PAVER



WOOD DECKING

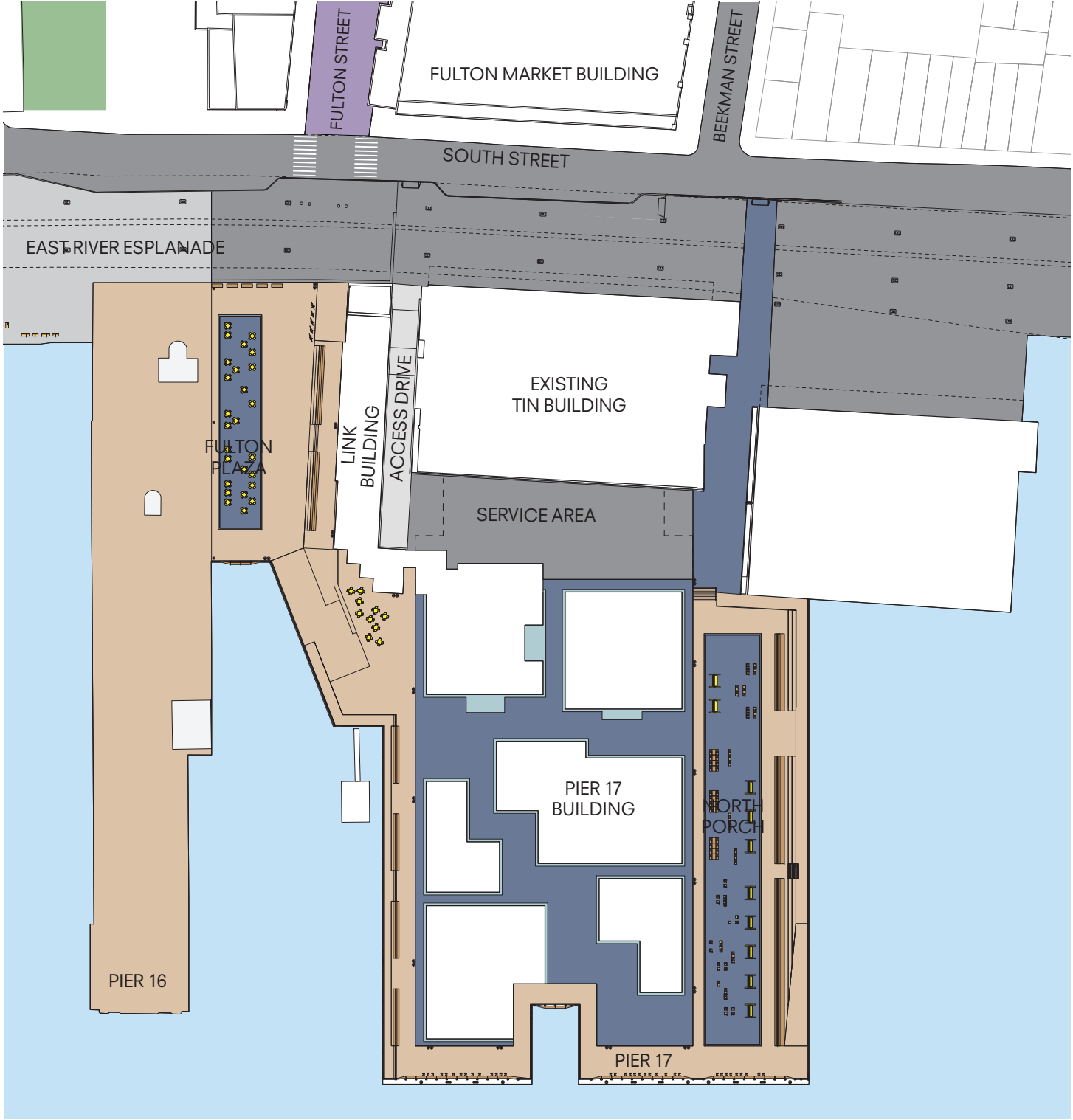


CONCRETE PAVER



BLUESTONE

SOUTH STREET SEAPORT // HARDSCAPE // 2013 APPROVED HARDSCAPE MATERIALS



1 PRECAST PAVER



2 PRECAST PAVER



3 PRECAST PAVER CROSSWALK



4 CURB



5 ESPLANADE HEX PAVER



6 WOOD DECKING

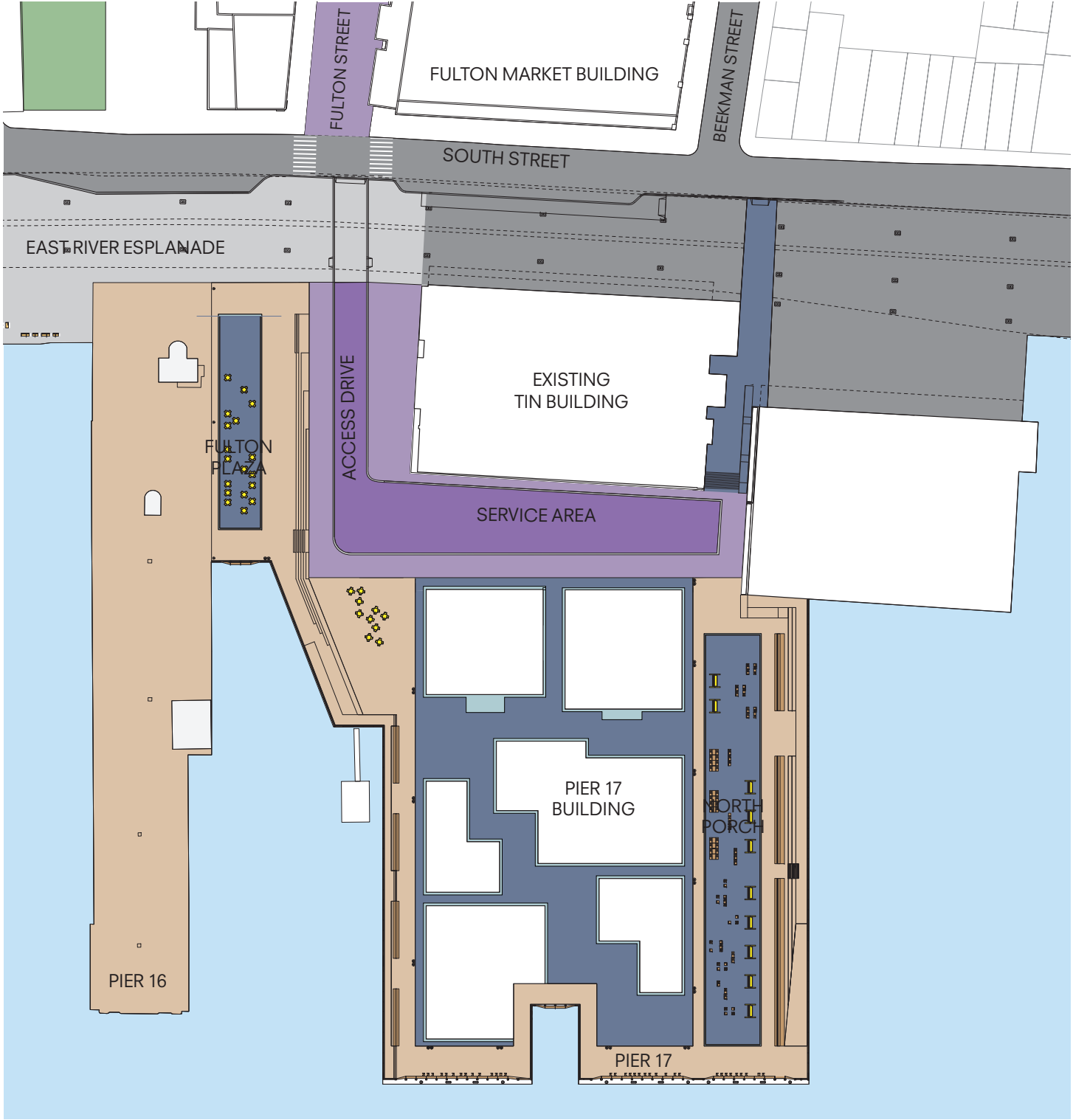


7 CONCRETE PAVER



8 BLUESTONE

SOUTH STREET SEAPORT // HARDSCAPE // 2015 LPC APPROVED HARDSCAPE MATERIALS



1 PRECAST PAVER



2 PRECAST PAVER



3 PRECAST PAVER CROSSWALK



4 CURB



5 ESPLANADE HEX PAVER



6 WOOD DECKING

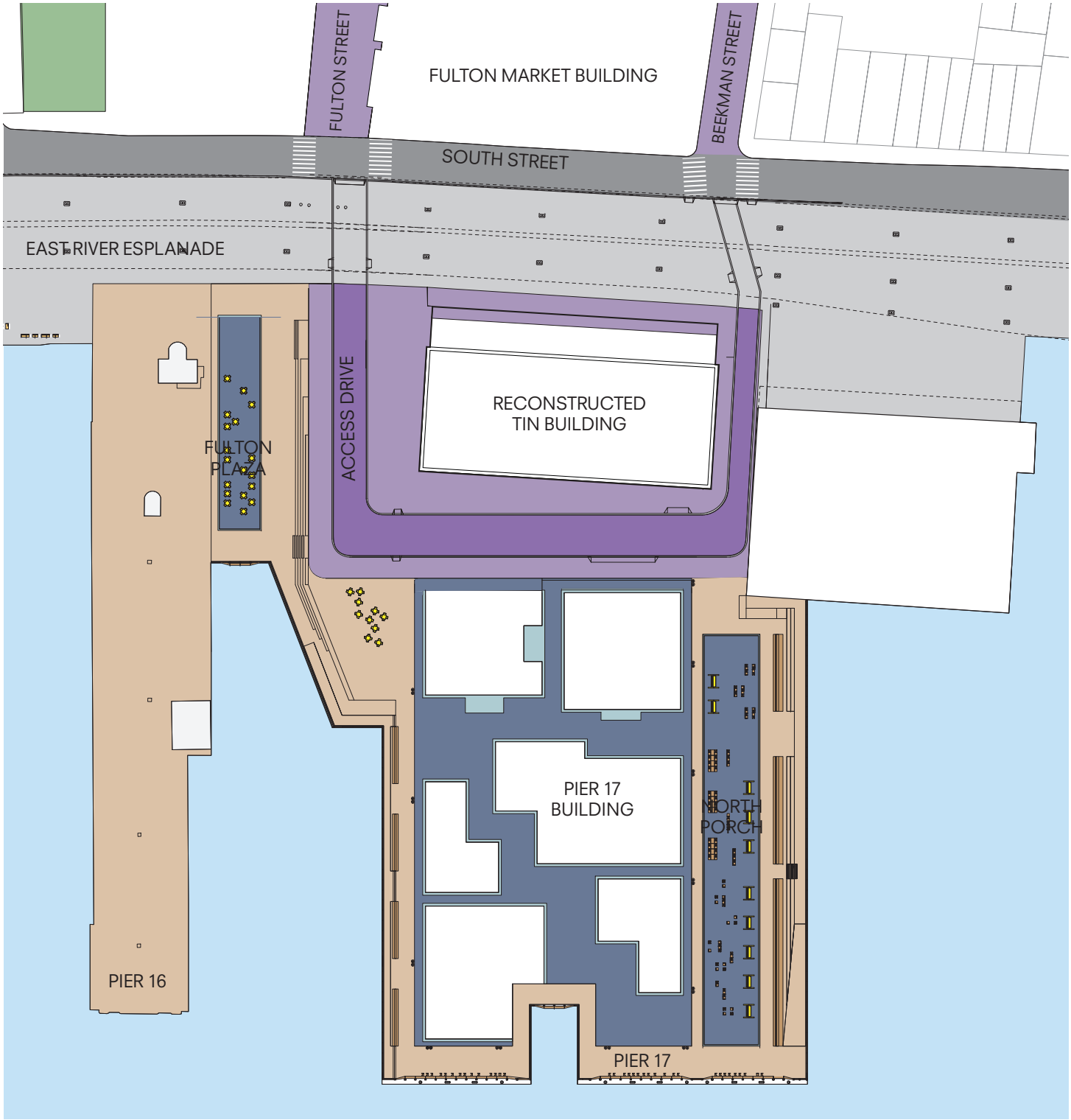


7 CONCRETE PAVER



8 BLUESTONE

SOUTH STREET SEAPORT // HARDSCAPE // PROPOSED HARDSCAPE MATERIALS



1 PRECAST PAVER



2 PRECAST PAVER



3 PRECAST PAVER CROSSWALK



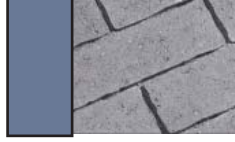
4 CURB



5 ESPLANADE HEX PAVER



6 WOOD DECKING



7 CONCRETE PAVER



8 BLUESTONE

PROJECT VIEWS

SOUTH STREET SEAPORT // TIN BUILDING // VIEW FROM ESPLANADE

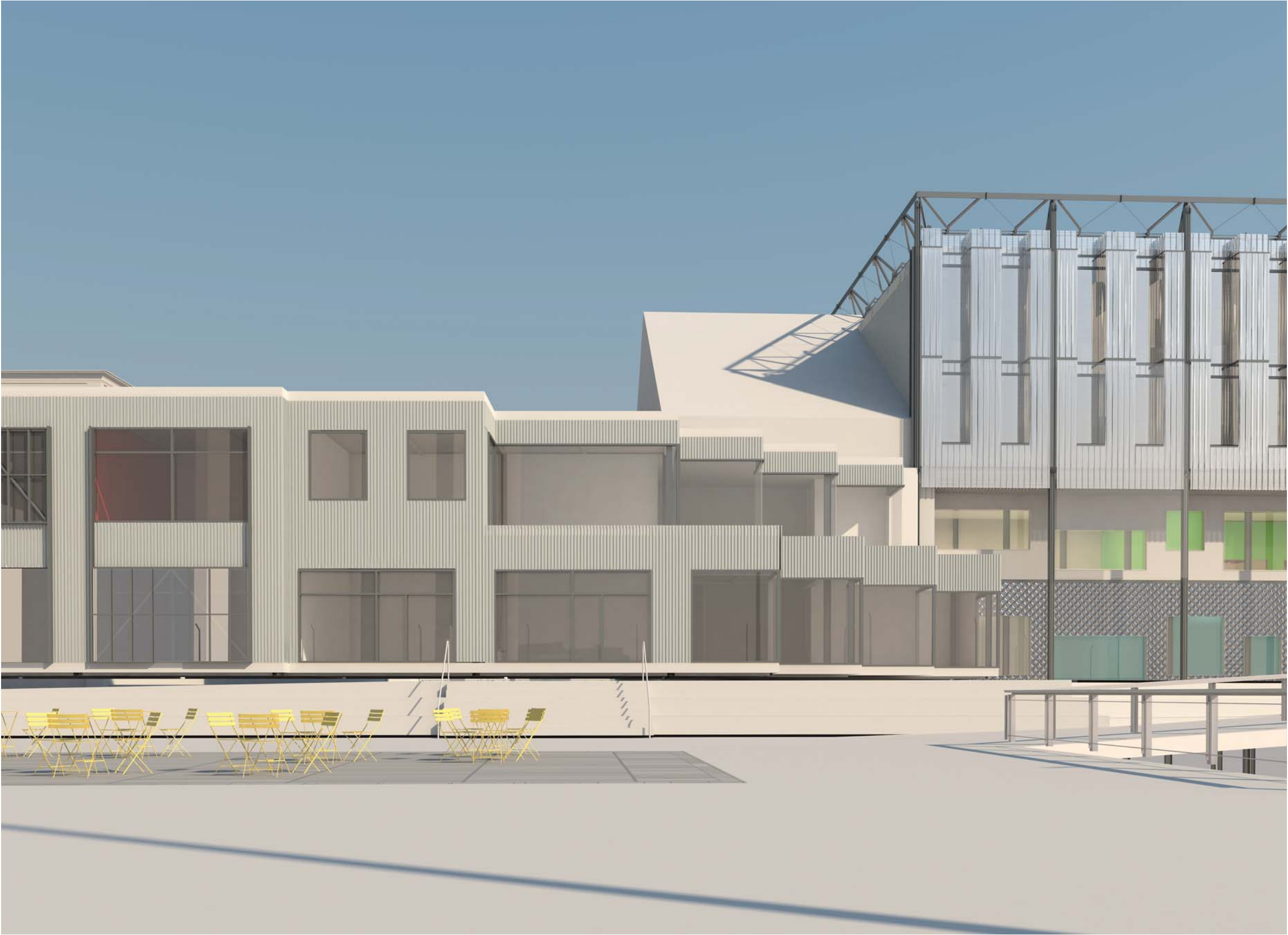


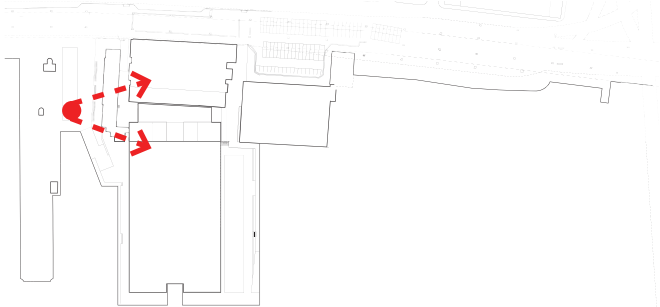
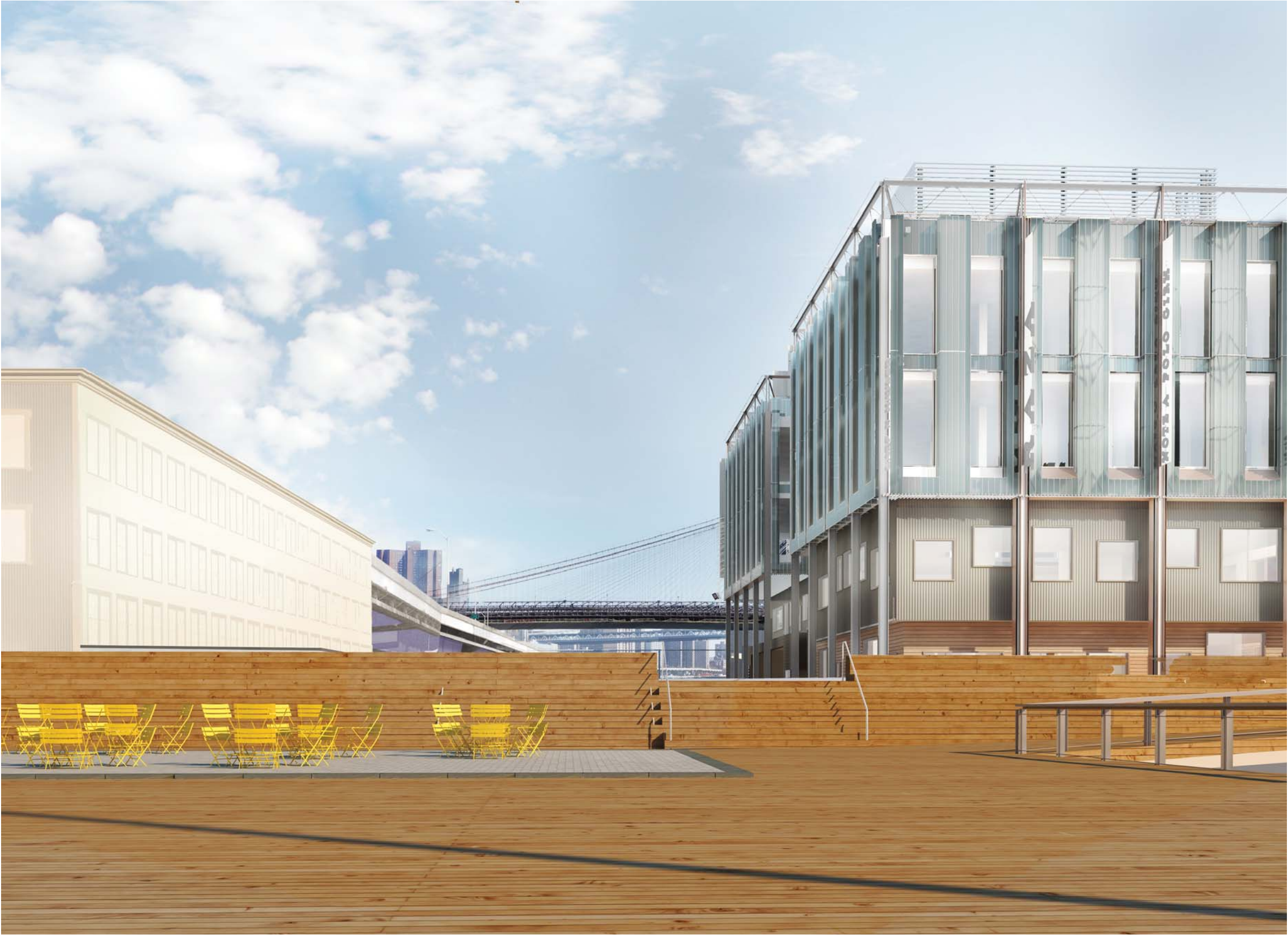












SOUTH STREET SEAPORT // PROPOSED VIEW

