



# Manhattan Community Board 1 Full Board Meeting

WEDNESDAY, SEPTEMBER 30, 2015

6:00 PM

LMHQ

150 Broadway, 20<sup>th</sup> Floor

Catherine McVay Hughes, Chairperson

Noah Pfefferblit, District Manager

Lucy Acevedo, Community Coordinator

Diana Switaj, Director of Planning and Land Use

Michael Levine, Planning Consultant



# CB1's OFFICE HAS MOVED

Please update your records to reflect the following changes:

Manhattan Community Board 1  
1 Centre Street, Room 2202 North  
New York, NY 10007

Tel: (212) 669-7970

Fax: (212) 669-7899

Website:

<http://www.nyc.gov/html/mancb1/html/home/home.shtml>

Email: [Man01@cb.nyc.gov](mailto:Man01@cb.nyc.gov)



# Manhattan Community Board 1

---

## Public Hearing

Community Board 1 Capital and Expense Budget  
Request for FY 2017

# Manhattan Community Board 1

---

## Public Session

Comments by members of the public

(6 PM to 7 PM)

(Please limit to 1-2 minutes per speaker, to allow everyone to voice their opinions)

Welcome:

The Downtown Alliance

Guest Speaker:

Captain Jonathan Boulware, Executive Director, South Street Seaport Museum

# Manhattan Community Board 1

---

## Business Session

- Adoption of July 2015 minutes
- Chairperson's Report – C. McVay Hughes
- District Manager's Report – N. Pfefferblit

# Peck Slip School (PS 343) Opened



# Mayor de Blasio and Lower Manhattan leaders announce new \$100 million City commitment to coastal resiliency

City will leverage commitment to bolster National Disaster Resilience Competition (NDRC) Application; Senator Squadron, Manhattan Borough President Brewer, Councilmember Chin, US Representative Velazquez, Catherine McVay Hughes and others distribute "go bags"



Mayor de Blasio, flanked by U.S. Rep. Nydia Velazquez, and State Sen. Daniel Squadron, handing out "go bags" Thursday, the same day he announced \$100 million of storm protection for Lower Manhattan. Downtown Express photo by Dusica Sue Malesevic.

# Pope Francis makes historic visit to the 9/11 Memorial and Museum



The interfaith service for peace in which Pope Francis prominently participated was shown on a large screen erected on the grounds of the National September 11 Memorial & Museum. (Photos: Terese Loeb Kreuzer)



Pope Francis.  
(Photo: Catherine McVay Hughes)

He paid his respects to the victims and led a multireligious peace gathering. He became the first pontiff to visit the Memorial and Museum since its opening to the public. (09/25/15)



# James Zadroga World Trade Center Health and Compensation Act Reauthorization



Zadroga Re-authorization  
Press Conference  
(09/03/15)



Dr Raju, President of HHC and a thoracic surgeon, acknowledged the WTC Health Program at HHC. His comments were a call-to-action moment for the reauthorization of Zadroga

Dr. Joan Reibman, Catherine McVay Hughes, Kimberly Flynn and Maggie Garcia (09/24/15)

# Battery Park City Authority & Battery Park City Parks 9/11 Dedication: Full Circle (09/09/15)



## Plaque

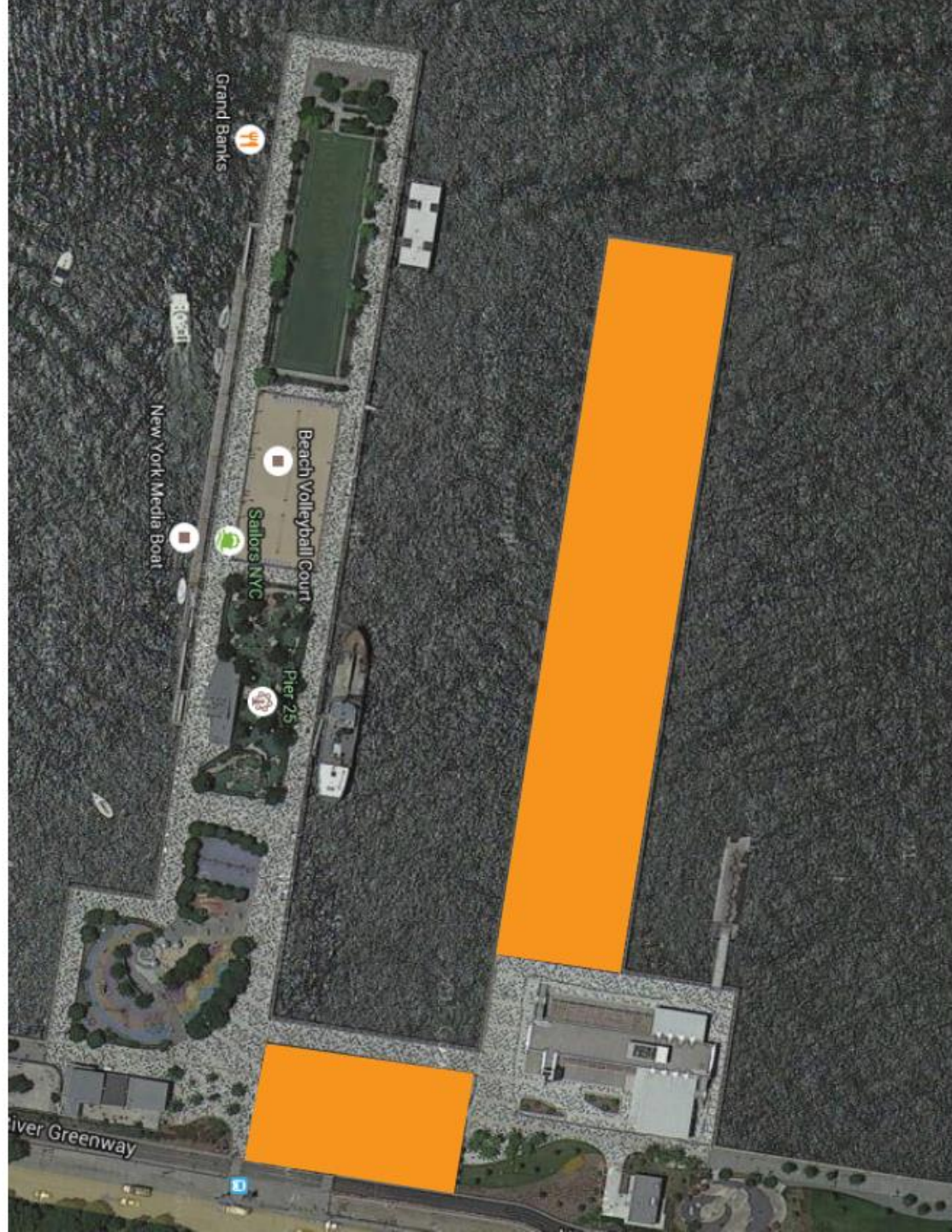
"In the immediate aftermath of 9/11 Battery Park City Parks and Authority employees tirelessly assisted in the clean-up of Battery Park City. Revitalizing our parks and restoring our neighborhood to the refuge it is today. We dedicate this oasis within an oasis to honor their efforts."



Circle of Remembrance



Blue Wreath

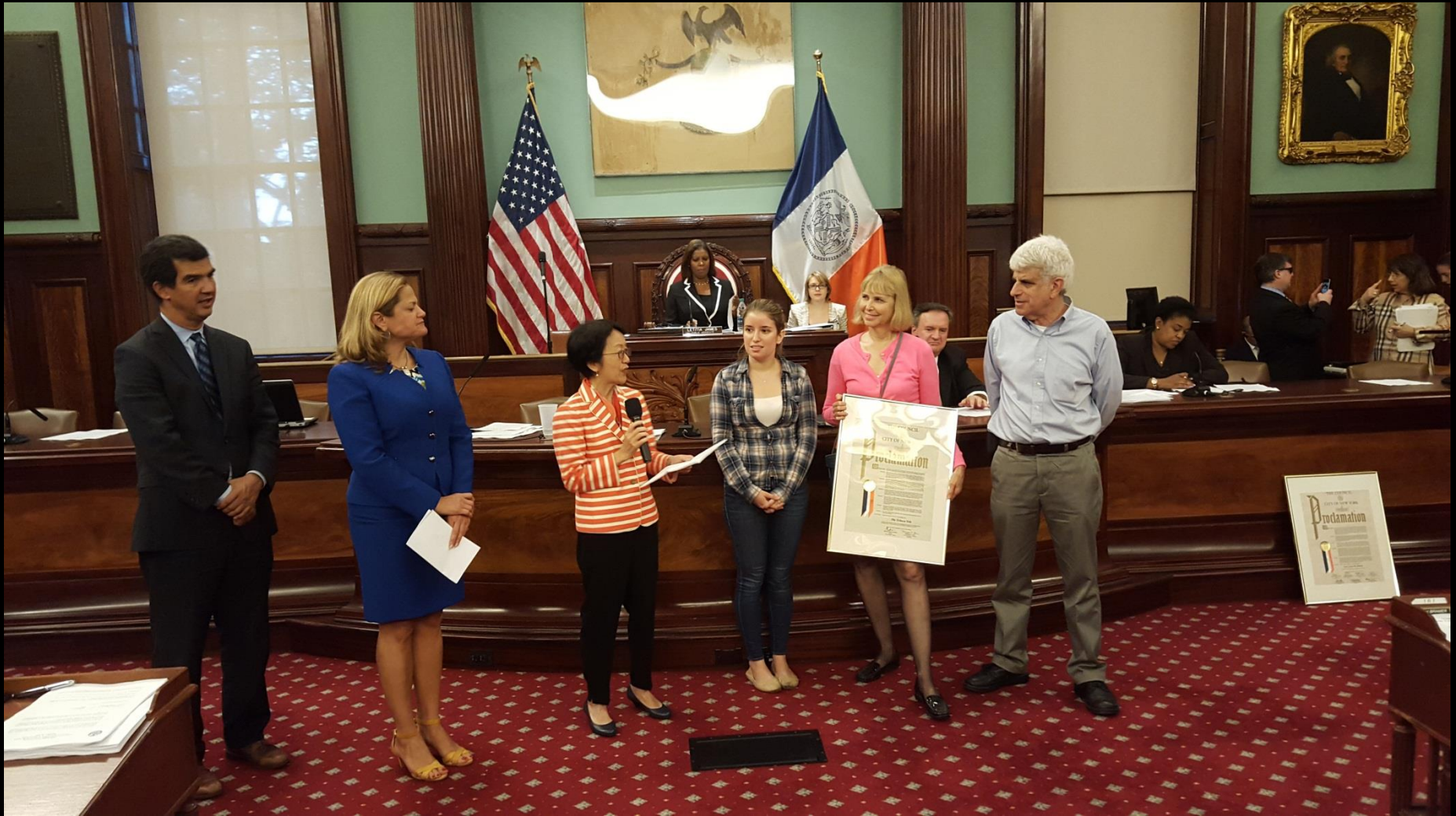


# Participate in a discussion about the Future of Pier 26

Monday, Oct 19  
6:30–8pm

120 Warren St.  
NY, NY 10007

Hosted by  
Community Board 1 and  
the Hudson River Park Trust



Carl Glassman and April Koral were honored by NYC Council Member Chin and Speaker Mark Viverito at City Hall for their many years running The Tribeca Trib – Congratulations! (09/30/15)

# Manhattan Community Board 1

wishes to commend and thank

## Noel Jefferson



For her distinguished service as a Member of Manhattan Community Board 1 since 2002. Ms. Jefferson served on the Landmarks Committee, to which she has contributed her dedication to the preservation of CB1's historic buildings and character, and the Tribeca Committee, where she contributed her passion for the neighborhood where she has been a long-time resident of Independence Plaza North. In addition to her outstanding service to Community Board 1, Ms. Jefferson is a noted photographer and filmmaker and hosted a show, "Make No Little Plans," on cable television where she explored issues of importance to her community and the wider public, such as the reconstruction of Lower Manhattan following 9/11, including 130 Liberty Street and safe construction practices. She has taken photos of green buildings that she contributed to the [Community District 1 Green Spaces Profile](#) (September 2014), provided working expertise in affordable housing and helped protect NYC's water supply by ending fracking and climate change.

**September 30, 2015**

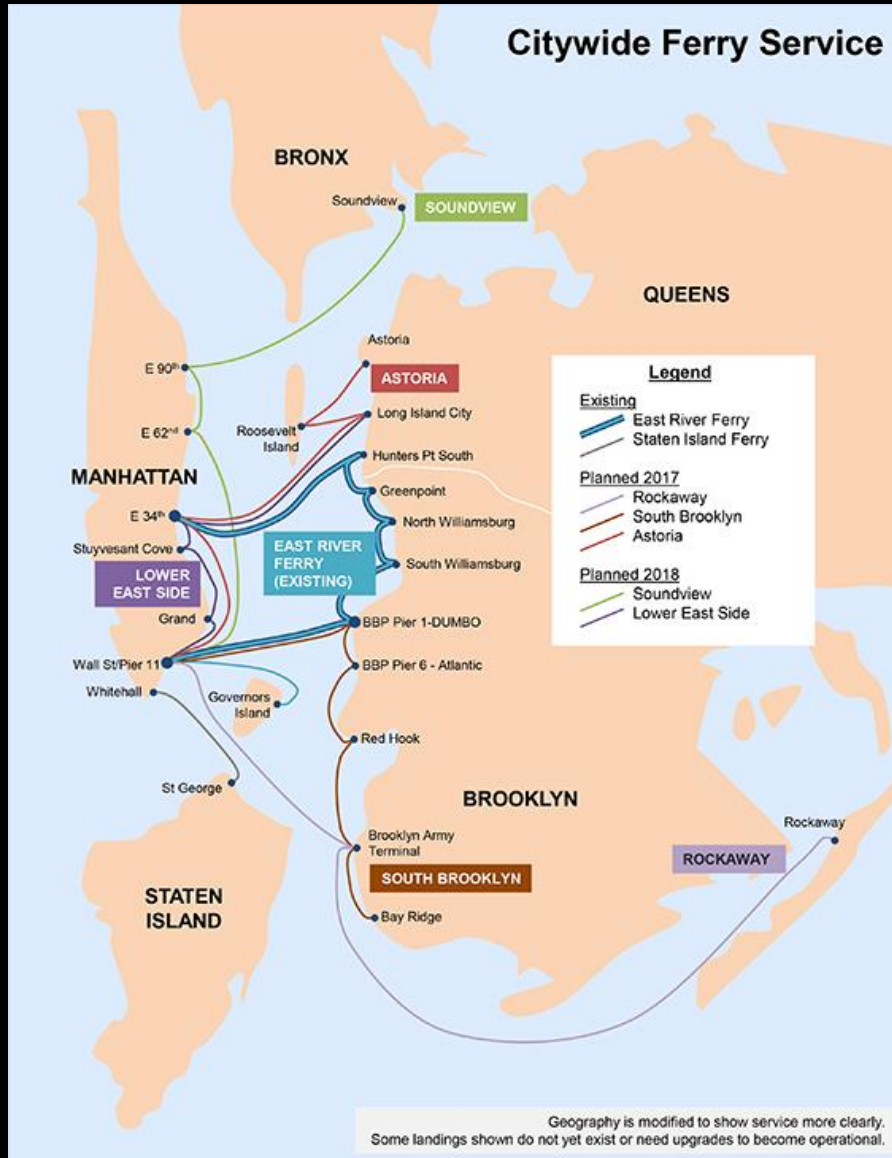
# Manhattan Community Board 1 Committee Reports

## Executive Committee – C. Hughes

- 1) Citywide Ferry Service Draft Scope of Work for a Draft Environmental Impact Statement – Resolution
- 2) Manhattan Borough President's Office hearing on Manhattan Congestion, Thursday, 9/17 – Resolution
- 3) Capital and Expense Budget Requests for FY 2017 – Resolution
- 4) Manhattan Community Board 1 Tribeca District Boundaries – Report
- 5) Calendars for January-June 2016 – Report

# Citywide Ferry Service

## Draft Scope of Work for a Draft Environmental Impact Statement



Comments on the Draft Scope of Work will be accepted until 5:00 P.M. on Thursday, October 8, 2015 through the following:

Written comments may be submitted by email to [citywideferryeis@edc.nyc](mailto:citywideferryeis@edc.nyc)

Or by mail to  
The Mayor's Office of Sustainability  
Attn: Denise Pisani, Senior Project Manager  
253 Broadway, 7th Floor  
New York, New York 10007

# Manhattan Community Board 1 Tribeca District Boundaries



Community Board 1 Boundaries

DNAinfo | NEW YORK • NEIGHBORHOODS • NEWS • LIFESTYLE •

Draw Where You Think Your Neighborhood Borders Are on This Map

DNAinfo New York Drawing TriBeCa

A map of Tribeca, New York, showing the same street grid as the previous map. Overlaid on the map are hand-drawn lines in blue and red, representing proposed neighborhood boundaries. The blue lines form a large, irregular shape covering most of the district, while the red lines form a smaller, more defined area within it. The map also shows landmarks like City Hall Park and various street names like West Street, Broadway, and Canal Street.

Leaflet | Cre



# Manhattan Community Board 1 Committee Reports

Executive and Personnel Committees –  
C. Hughes & R. Byrom

1) Selection of Community Board 1 Land Use Consultant – Resolution

# Manhattan Community Board 1 Committee Reports

## Quality of Life – P. Moore

- 1) WTC Health Program for Survivors – Resolution
- 2) NYC Department of Transportation construction update – Report
- 3) Rats and garbage issues in CB1 – Report
- 4) City Council Sanitation Committee Hearing for Int. 377 – Report

# Manhattan Community Board 1 Committee Reports

## Landmarks – R. Byrom and B. Ehrmann

- 1) 17 Leonard Street rooftop addition mockup – Resolution
- 2) 27 North Moore Street, application for pergola and screen design – Resolution
- 3) 287 Broadway, application for façade restoration and window and storefront replacement – Resolution
- 4) 136 Beekman Street, application for rooftop addition – Resolution
- 5) 27-A Harrison Street, application to legalize existing rear yard fence – Resolution
- 6) 140 Franklin St, application for storefront renovation – Resolution
- 7) 60 Hudson Street, applications for expansion of four louvers on 11th floor and new generator on 19th floor setback – Resolution
- 8) 399 Greenwich Street, application to approve existing awning and gooseneck lights at Greenwich Street Tavern sidewalk café – Resolution
- 9) 6 Varick Street, application for storefront renovation and installation of canopy and platform – Resolution
- 10) 130 Beekman Street, application for new building entry door and canopy on Beekman Street between Water and Front Streets – Resolution
- 11) 49 Chambers Street, application for modification of entrances for ADA compliance and addition of canopy, new window openings on east and west facades, and new railing on rooftop – Resolution

# 17 Leonard Street



# 27 N. Moore Street

**IMAGE 2: MONTAGE - LOOKING WEST AT EAST PERGOLA FROM CORNER OF VARICK ST. AND BEACH ST.**



**IMAGE 4: MONTAGE - LOOKING SOUTHWEST AT EAST PERGOLA AND SCREEN FROM CORNER OF VARICK ST. AND LAIGHT ST. AT ALBERT CAPSOUTO PARK**



**IMAGE 6: MONTAGE - LOOKING SOUTHEAST AT SCREEN AND WEST PERGOLA FROM CORNER OF HUDSON ST. & HUBERT ST.**



**IMAGE 9: MONTAGE - LOOKING NORTHEAST AT WEST PERGOLA FROM HUDSON ST. SOUTH OF N. MOORE STREET**



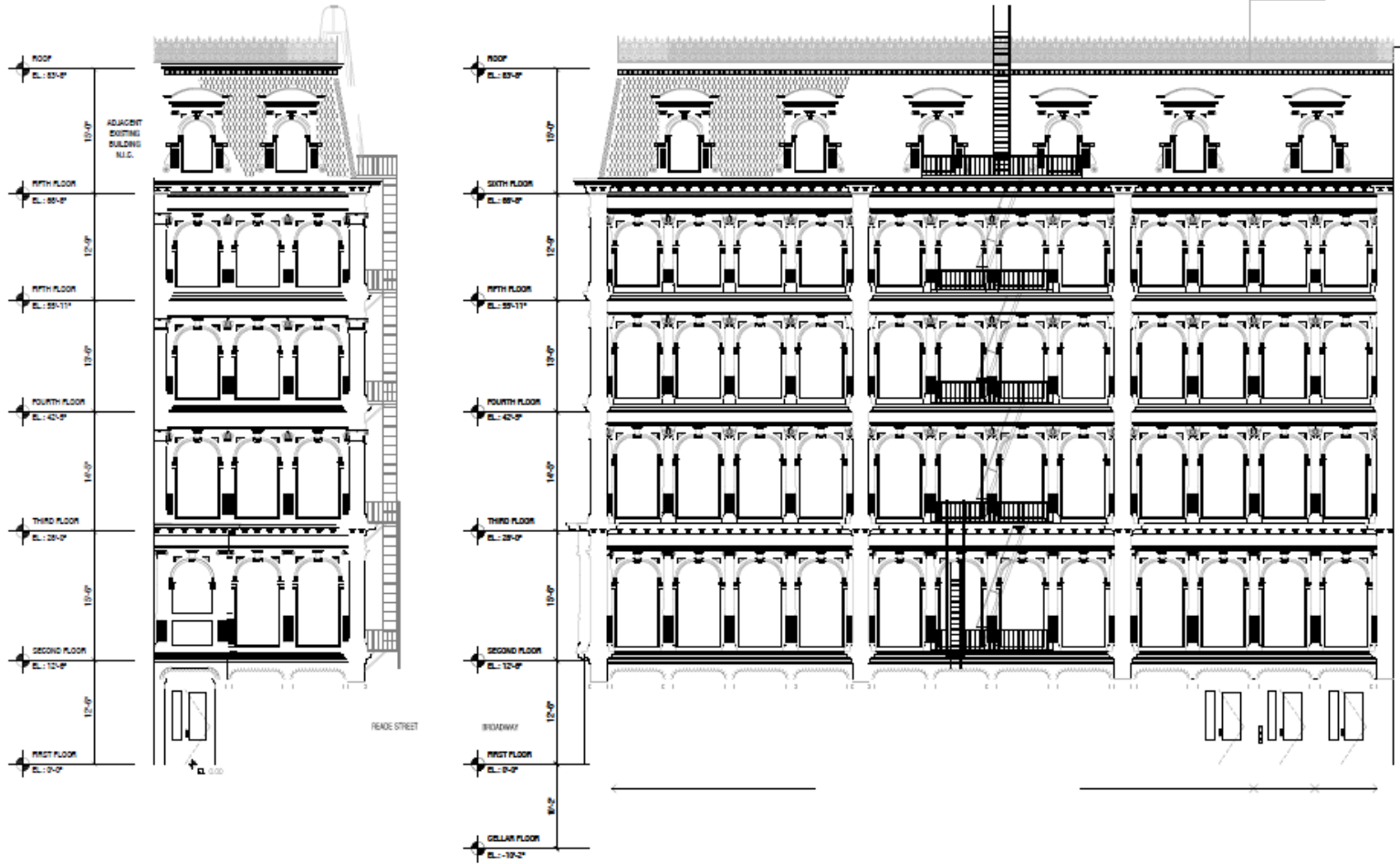
**REFER TO PAGE 6  
FOR IMAGE  
REFERENCE  
LOCATION**

# 287 Broadway

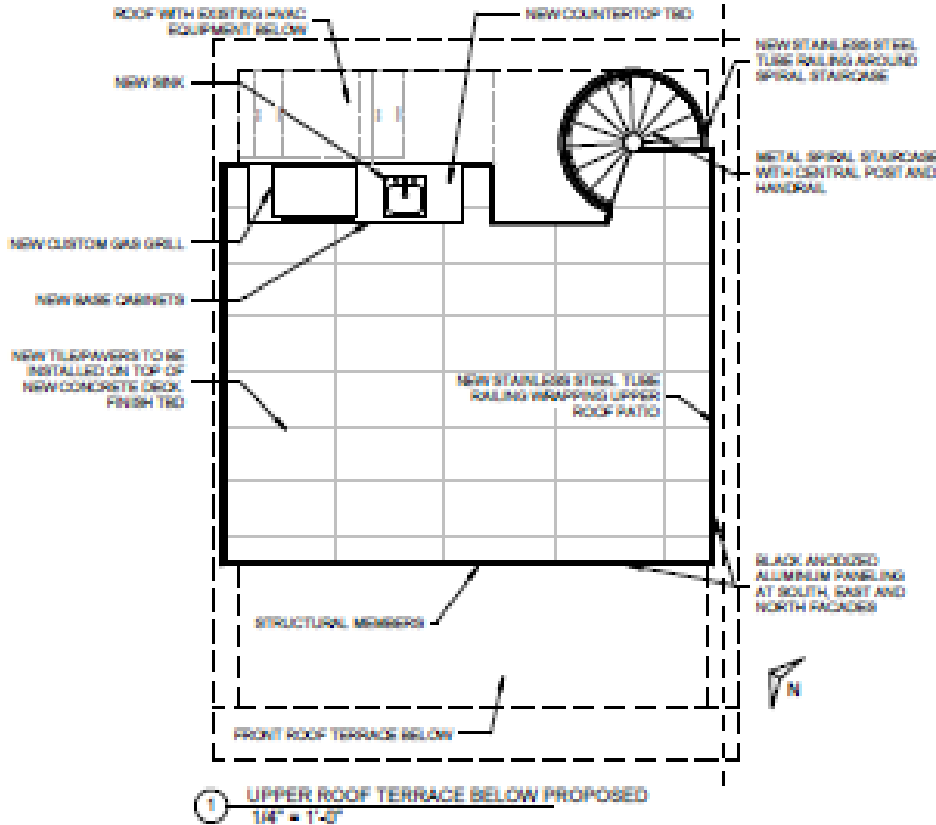


# 287 Broadway

ALL EXISTING CONDITIONS ARE TO BE MAINTAINED UNLESS NOTED OTHERWISE BY THE ARCHITECT AND ENGINEER. IF EXISTING CONDITIONS DO NOT COORDINATE WITH PROVIDED DRAWINGS.



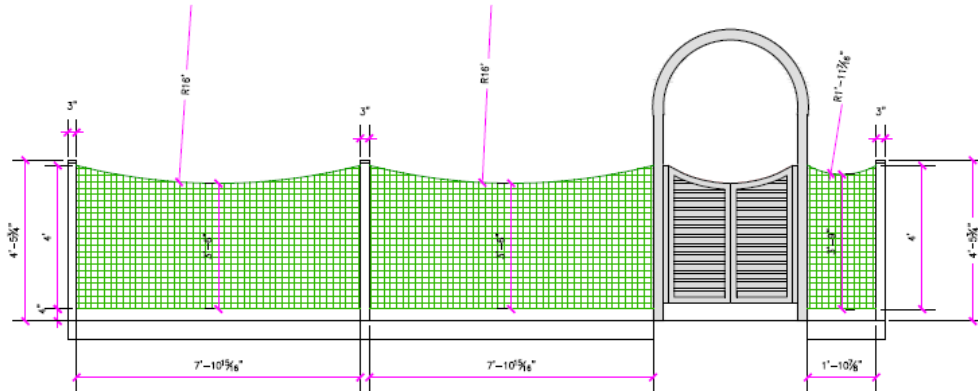
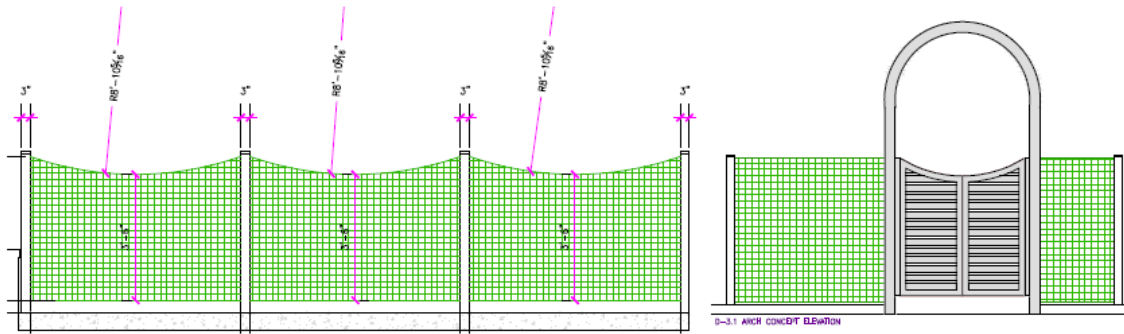
# 136 Beekman Street



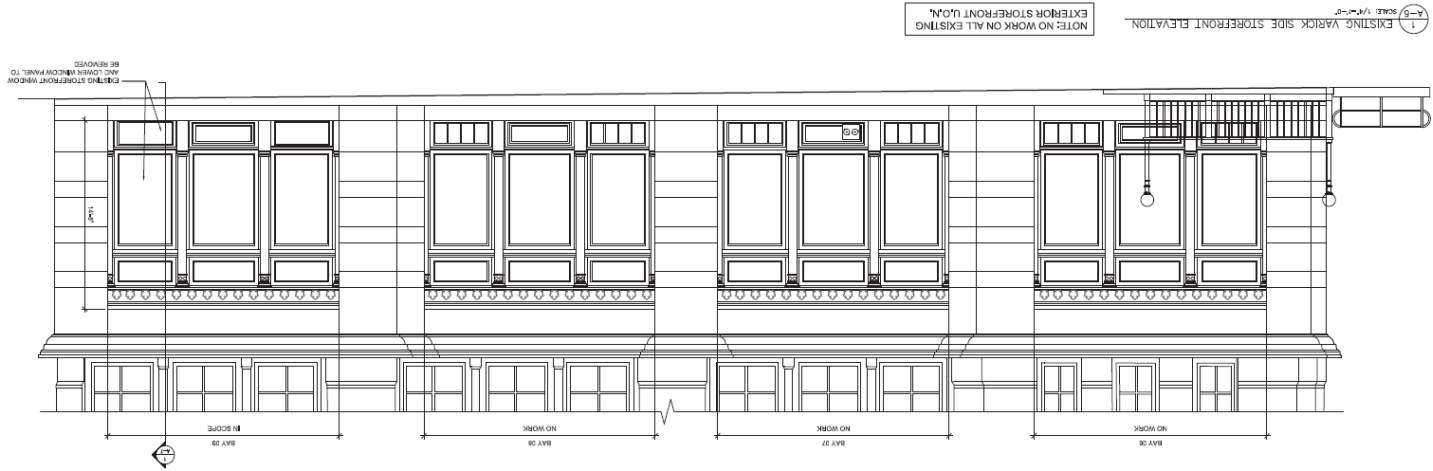
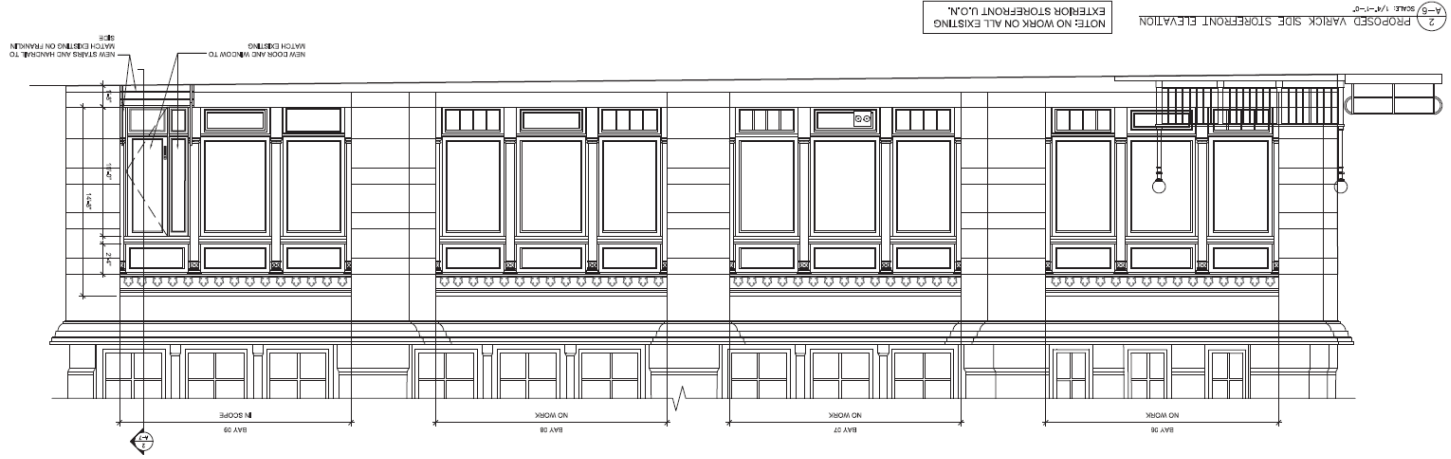
② PROPOSED ISOMETRIC VIEW 1



# 27A Harrison Street



# 140 Franklin Street



# 60 Hudson Street



# 399 Greenwich Street



# 6 Varick Street

FRANCIS H. LEGGET & CO'S WHOLESALE GROCERY WAREHOUSE  
6 VARICK STREET

STOREFRONT RENOVATION PROPOSAL  
LANDMARKS PRESERVATION COMMISSION PRESENTATION

Scott Henson Architect LLC



6 VARICK STREET | SOUTHEAST CORNER



VARICK STREET | EXISTING STOREFRONT



FRANKLIN STREET | EXISTING STOREFRONT

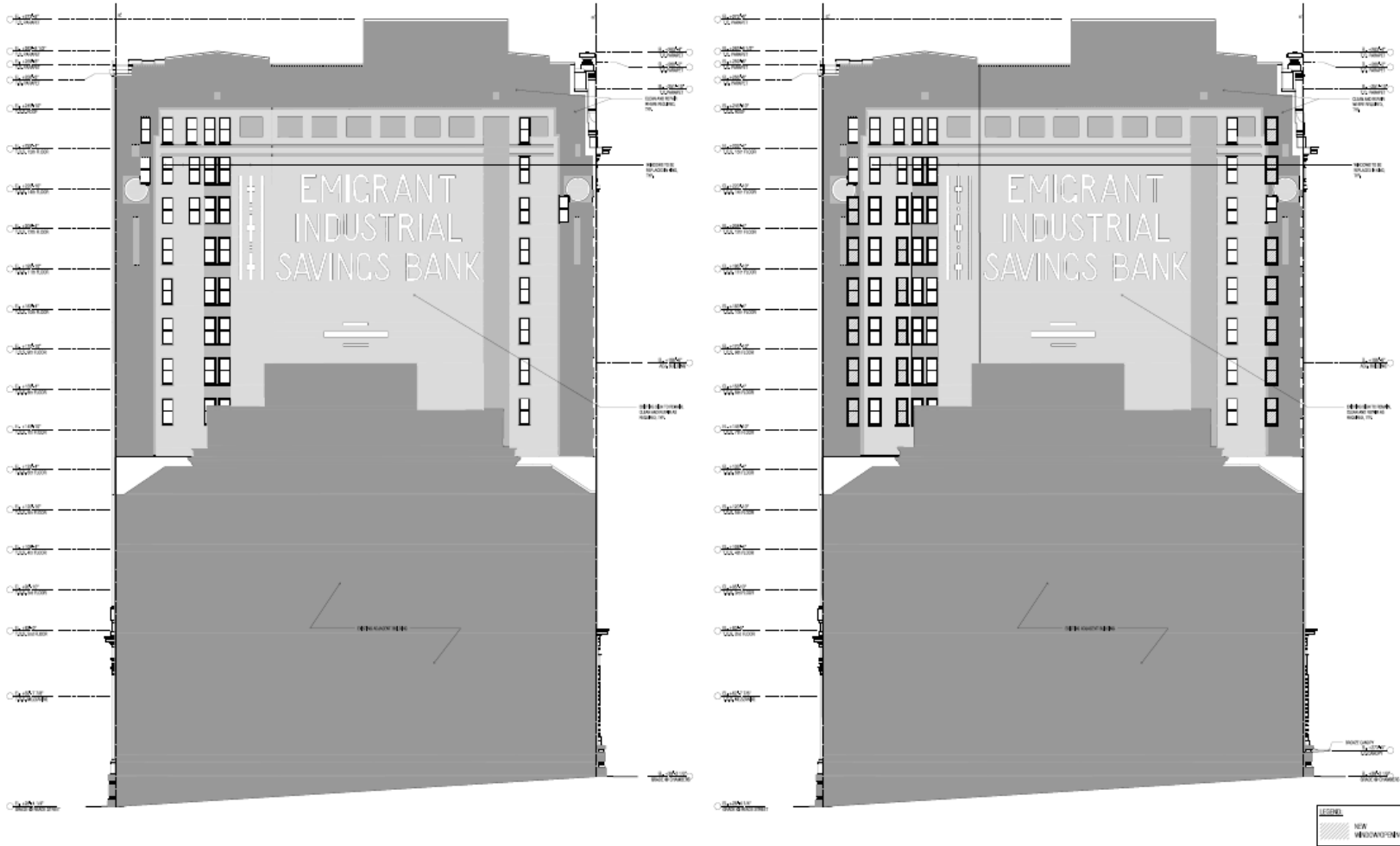


WEST BROADWAY | EXISTING STOREFRONT

# 130 Beekman Street



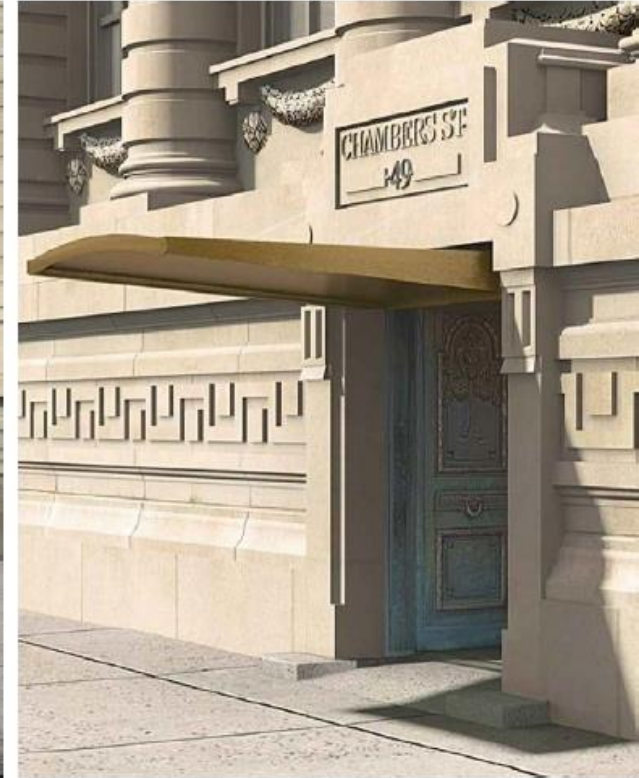
# 49 Chambers Street



# 49 Chambers Street



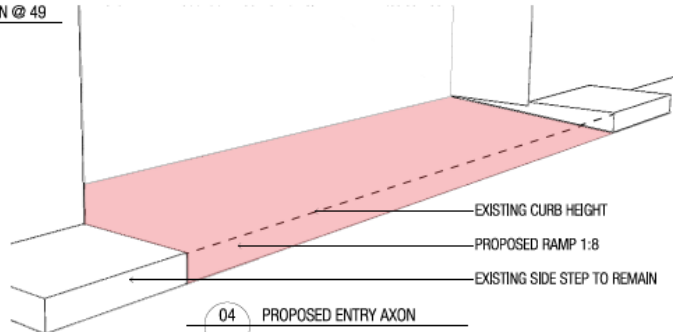
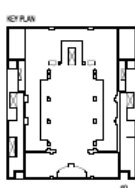
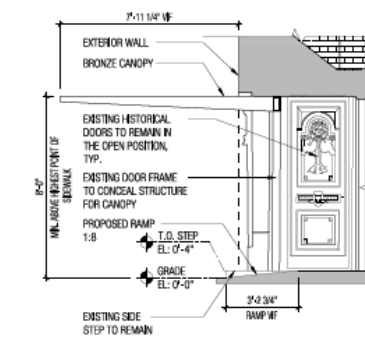
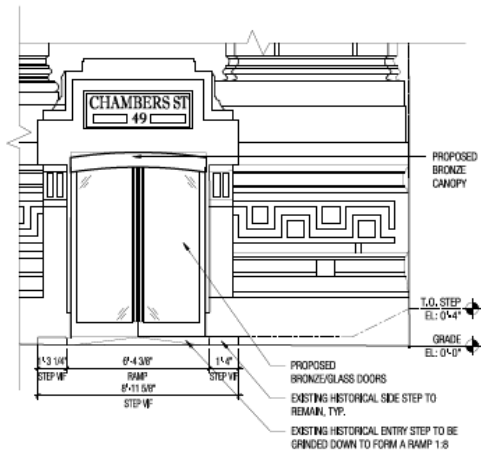
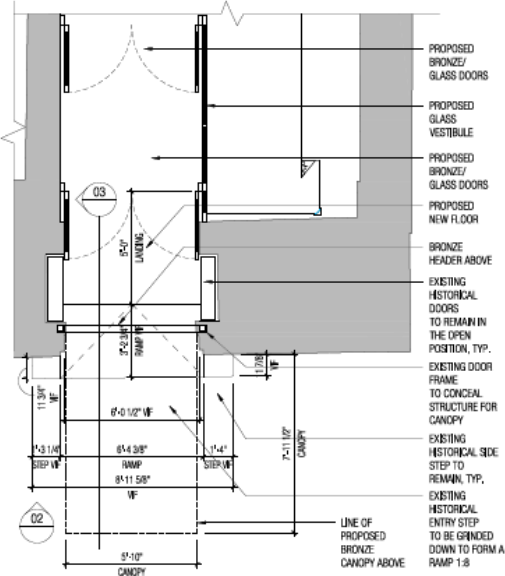
01 PROPOSED ENTRY RENDERING



02 PROPOSED ENTRY RENDERING



# 49 Chambers Street



# Manhattan Community Board 1 Committee Reports

## Seaport/Civic Center – M. Pasanella

- 1) Peck Slip/Water Street traffic safety – Resolution
- 2) 80 Centre Street, Public Design Commission application for landscaping and new handicap ramp at Worth Street – Resolution
- 3) South Street Seaport Museum proposal for 207-215 Water Street – Resolution
- 4) 200 Water Street, application for proposed bus stop location – Report
- 5) Howard Hughes Corporation – Report

# Peck Slip/Water Street Traffic Safety



Peck Slip & Pearl Street

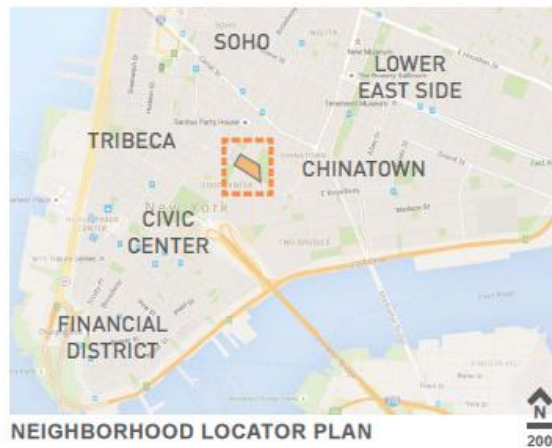
# 80 CENTRE STREET

## SIDEWALK AND ADA UPGRADES

PROJECT ID. PW195SW2

MANHATTAN COMMUNITY BOARD 1 MEETING  
SEPTEMBER 24, 2015





NYCDDC  
Mathews Nielsen Landscape Architects

80 Centre Street - Sidewalk and ADA Upgrades  
24 September 2015 - Community Board 1 Meeting

Context Plans  
Scale: NTS

Borough & Neighborhood

**1) REPLACE ALL PERIMETER  
SIDEWALKS & ALL ASSOCIATED  
CURBING\***

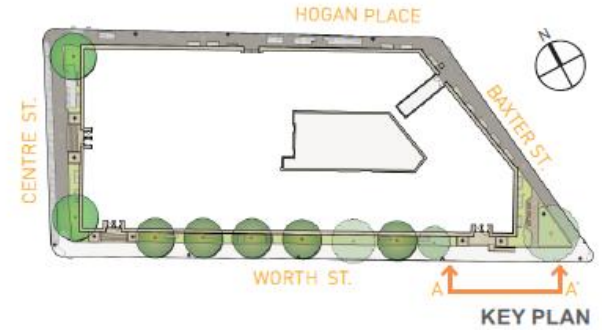
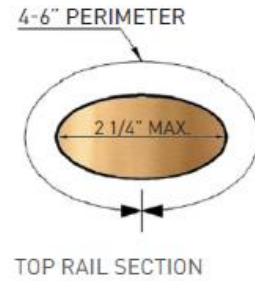
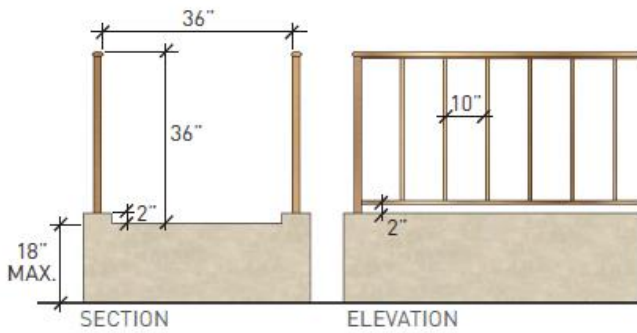
**2) DESIGN NEW PLANTING AREAS:**

- BETWEEN NEW SIDEWALK AND BUILDING
- AT THE TRIANGLE LOCATED AT THE CORNER  
OF BAXTER STREET AND WORTH STREET  
ADJACENT TO THE BUILDING

**3) INSTALL NEW ADA COMPLIANT  
ENTRANCE INTO THE BUILDING**

- \* WORTH STREET SIDEWALK WILL BE REPLACED  
UNDER SEPARATE DDC PROJECT #HWMWTC7E  
- SEE SLIDE 18





ADA-COMPLIANT HANDRAIL DETAILS - NTS



SECTION A - A'

SCALE: 3/16"=1'-0"



**SIDEWALK PAVEMENT**

'SCOFIELD - 2543 LANDMARKS GREY'  
PIGMENTED CONCRETE (DOT STANDARD)  
5' X 5' SAW-CUT JOINTS (DOT STANDARD)



**PATHWAY PAVEMENT**

12" X 24" 'DEER ISLE' GRANITE PAVERS  
TO MATCH EX. BUILDING  
THERMAL FINISH



**ADA RAMP**

'DEER ISLE' GRANITE BLOCK WALLS & RAMP  
TO MATCH EX. BUILDING  
THERMAL FINISH

**STRATEGY**

USE MATERIALS THAT ARE SENSITIVE TO THE HISTORIC BUILDING  
USE FURNISHINGS THAT CORRESPOND WITH SURROUNDING CIVIC LANDSCAPES



**ADA RAMP HANDRAIL**

BRONZE TO MATCH STYLE OF EX. HANDRAILS AT BUILDING  
(80 CENTRE STREET ENTRANCE SHOWN ABOVE)



**PEDESTRIAN LIGHTPOLE**

'B-POLE' WITH 'TYPE B' FIXTURE'  
BLACK IRON (DOT STANDARD)

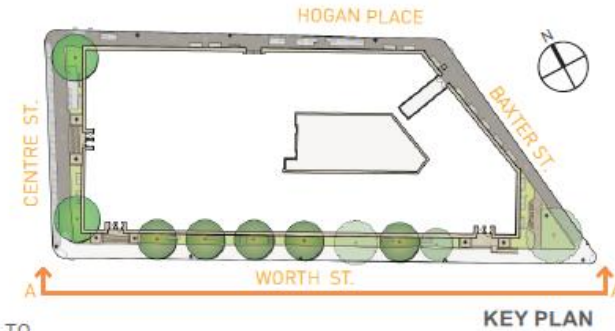


**BENCH**

'WORLD'S FAIR 1939' (DPR STANDARD)  
BLACK IRON WITH RECYCLED PLASTIC  
LUMBER SLATS IN 'WEATHERED WOOD'

NYCDDC	80 Centre Street - Sidewalk and ADA Upgrades	Materials Reference	Proposed Site Design
Mathews Nielsen Landscape Architects	24 September 2015 - Community Board 1 Meeting	Scale: NTS	Materials & Site Furnishings





NYCDDC  
Mathews Nielsen Landscape Architects

80 Centre Street - Sidewalk and ADA Upgrades  
24 September 2015 - Community Board 1 Meeting

Section Elevations  
Scale: As Shown

Proposed Site Elevation  
Worth Street

# South Street Seaport Museum proposal for 207-215 Water Street



## WALL STREET JOURNAL

### Seaport Museum Chief Slowly Rights Ship

With new FEMA money, Director Jonathan Boulware is bringing the institution back from Sandy



Jonathan Boulware, executive director of the South Street Seaport Museum, on the schooner Pioneer. Photo: Adrienne Grunwald for The Wall Street Journal

BY MELANIE GRAYCE | August 24th, 2015

It is a postcard-perfect summer afternoon, and the Pioneer, a schooner built in 1885, is gliding past New York's Governors Island toward the Statue of Liberty.

As a cool breeze grows stronger, the sails fill and the boat heels gently. The late-day sun casts a golden light on New York harbor, setting the towers of lower Manhattan ablaze.

If there is a cinematic moment that exemplifies the romance and majesty of sailing, it is this day on deck of the Pioneer, part of a fleet of historic vessels owned by the South Street Seaport Museum.

But Capt. Jonathan Boulware, the museum's 42-year-old executive director, who has worked most of his life aboard a boat, says "it's not really about the sailing for me. It's about the people on the ship. A ship, as a community of people, is

changing historical district in lower Manhattan.

Roland Lewis, president of the Metropolitan Waterfront Alliance, believes Mr. Boulware's vision of connecting people to the waterfront and to the harbor through a historical lens is "brilliant and correct," he said.

Mr. Boulware is "persistent and really sharp," said Mr. Lewis. "He understands the politics and real estate that surrounds him, and that has been a continuing challenge for this institution. He has a determined vision to recreate a vital and relevant educational institution."

Mr. Boulware came into the museum's top job in April. His path to it included a year's stint as the museum's first waterfront director and then, basically, an act of God. When superstorm Sandy hit Manhattan in late 2012, he and a few



The five-story Melville Gallery was built as a warehouse and dates from 1848.

Photo: Terese Loeb Kreuzer

Seaport  
District  
NYC

# SOUTH STREET SEAPORT

**CB-1 UPDATE – SEPTEMBER 24, 2015**

# AERIAL- SEPTEMBER 2015



**PIER 17 – CONSTRUCTION UPDATE**

# OPENING SUMMER 2016



**FULTON MARKET BUILDING – CONSTRUCTION UPDATE**

# FULTON STALL MARKET - STORE

## Community Programs

- Look Who's Cooking at the Fulton Stall Market – Kids cooking classes
- Spaggetaboutit – Family cooking/music mashup

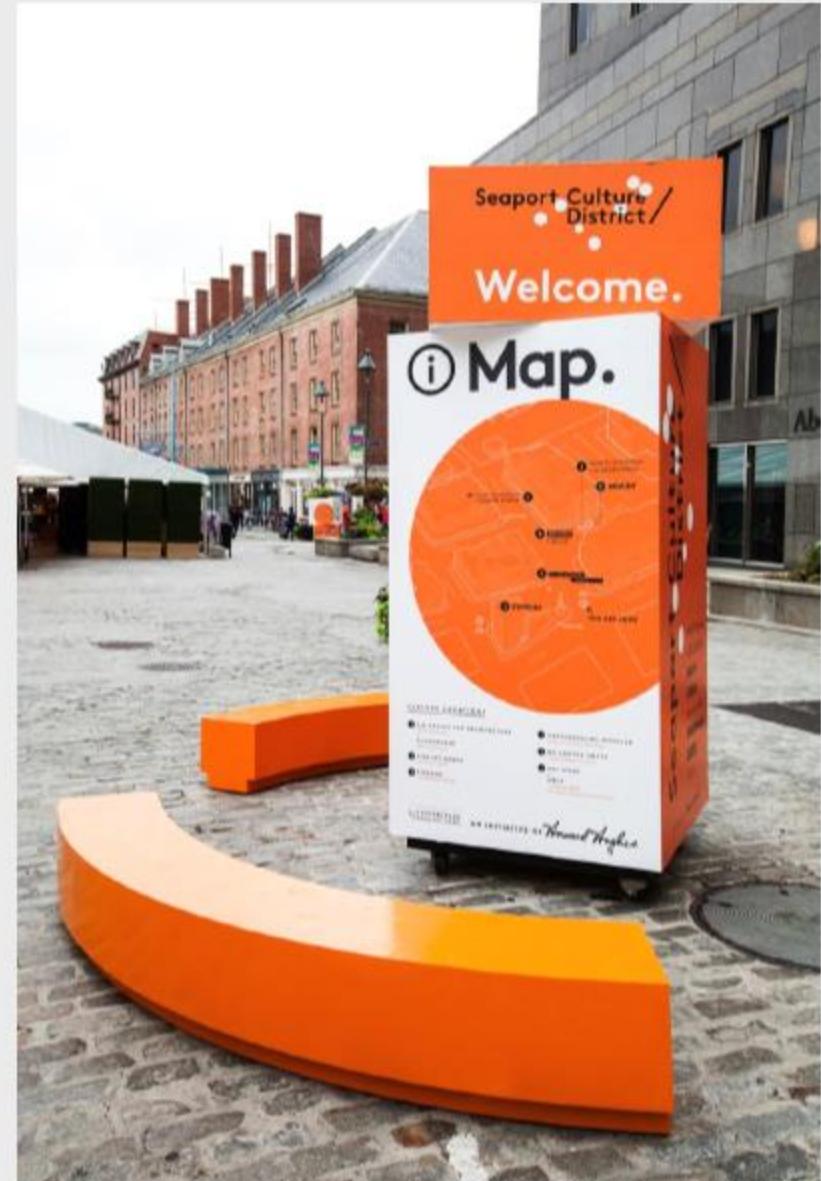
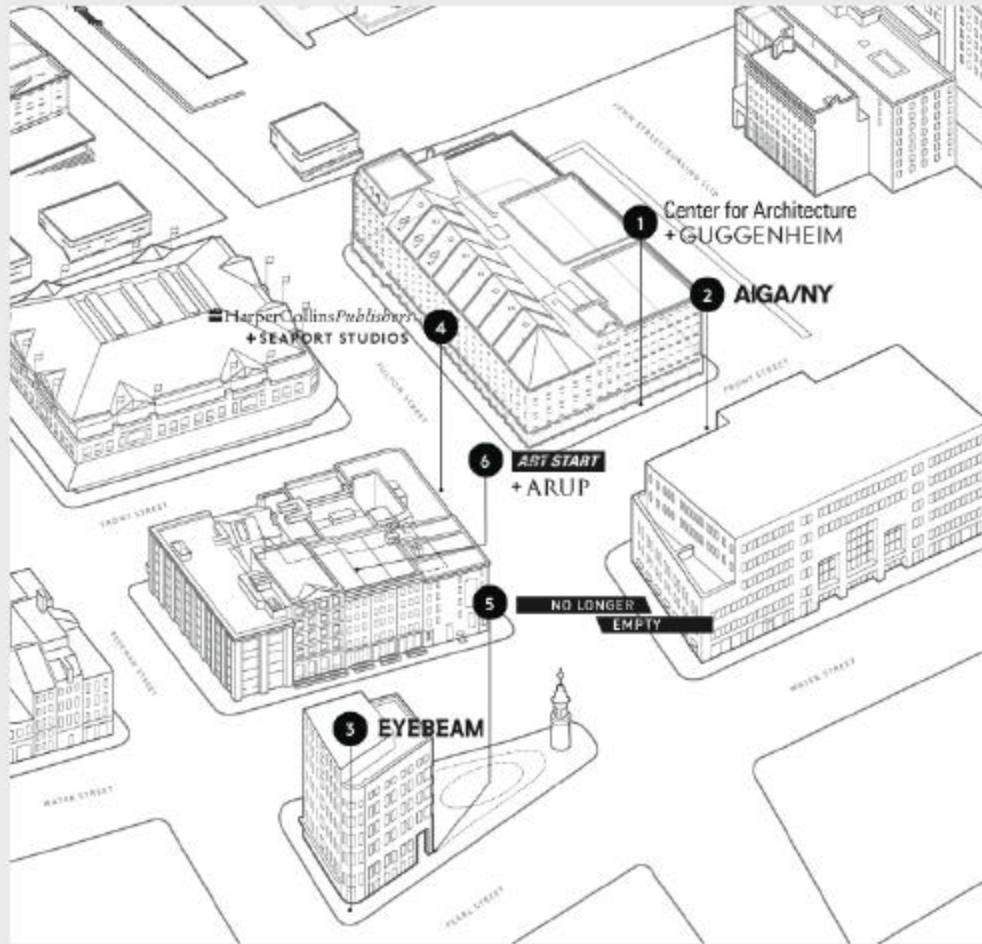


## Community Events

- Peck Slip Parent Mixer
- OSA Night Markets
- Family Movies – NY Independent Animation Nights



# HOWARD HUGHES CORPORATION "SEAPORT CULTURE DISTRICT"



Developed by The Howard Hughes Corporation under the direction of architect James Sanders, AIA, the Seaport Culture District comprises six activations with eight cultural partners, located in reimagined indoor and outdoor spaces throughout the historic upland blocks of the Seaport area. Wayfinding elements (right) help give the district a new identity and direct visitors from one activation to another.

# Manhattan Community Board 1 Committee Reports

## Planning Committee - M. Connolly

- 1) National Disaster Resiliency Competition, NYC Phase II Application – Resolution
- 2) Lower Manhattan Resiliency & Sustainability – Report
- 3) Ben Strauss, Ph.D., Vice President for Sea Level and Climate Impacts, Climate Central – Report





LOWER MANHATTAN PROTECT AND CONNECT

---

# THE CITY OF NEW YORK

---

NATIONAL DISASTER RESILIENCE COMPETITION

Phase 2 Application Draft for Public Comment

September 4, 2015

Comments on the proposed Phase 2 National Disaster Resilience Competition application will be accepted until October 3, 2015 at 11:59 PM through the following:

Online submission form:

[www.nyc.gov/html/cdbg/html/plan/action\\_form.shtml](http://www.nyc.gov/html/cdbg/html/plan/action_form.shtml)

Or by mail to

Jessica Colon, Senior Policy Advisor  
NYC Mayor's Office of Recovery and  
Resiliency

253 Broadway, 10th Floor  
New York, NY 10007

Comments may be provided by telephone by  
contacting 311

#ONENYC

Lower Manhattan Coastal Resiliency  
Community Board 1 – Planning Committee  
September 21, 2015

# Lower Manhattan Coastal Resiliency

In March, the City committed millions of dollars to advance resiliency planning and implementation in Lower Manhattan.

## Integrated Planning

- \$6.75 million for preliminary design and environmental review, funded with City and State CDBG-DR funds

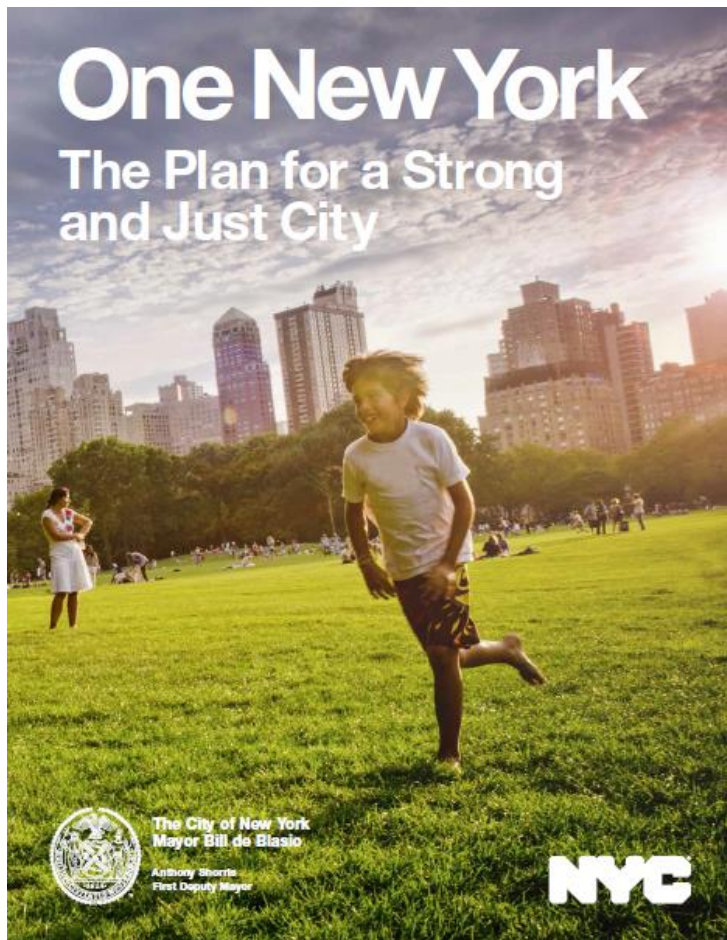
## Early Implementation

- \$8 million in City capital funding for a first phase of flood protection design and implementation in Battery Park



# OneNYC

In April, the City released OneNYC and made a commitment to implement coastal resiliency investments in Lower Manhattan.



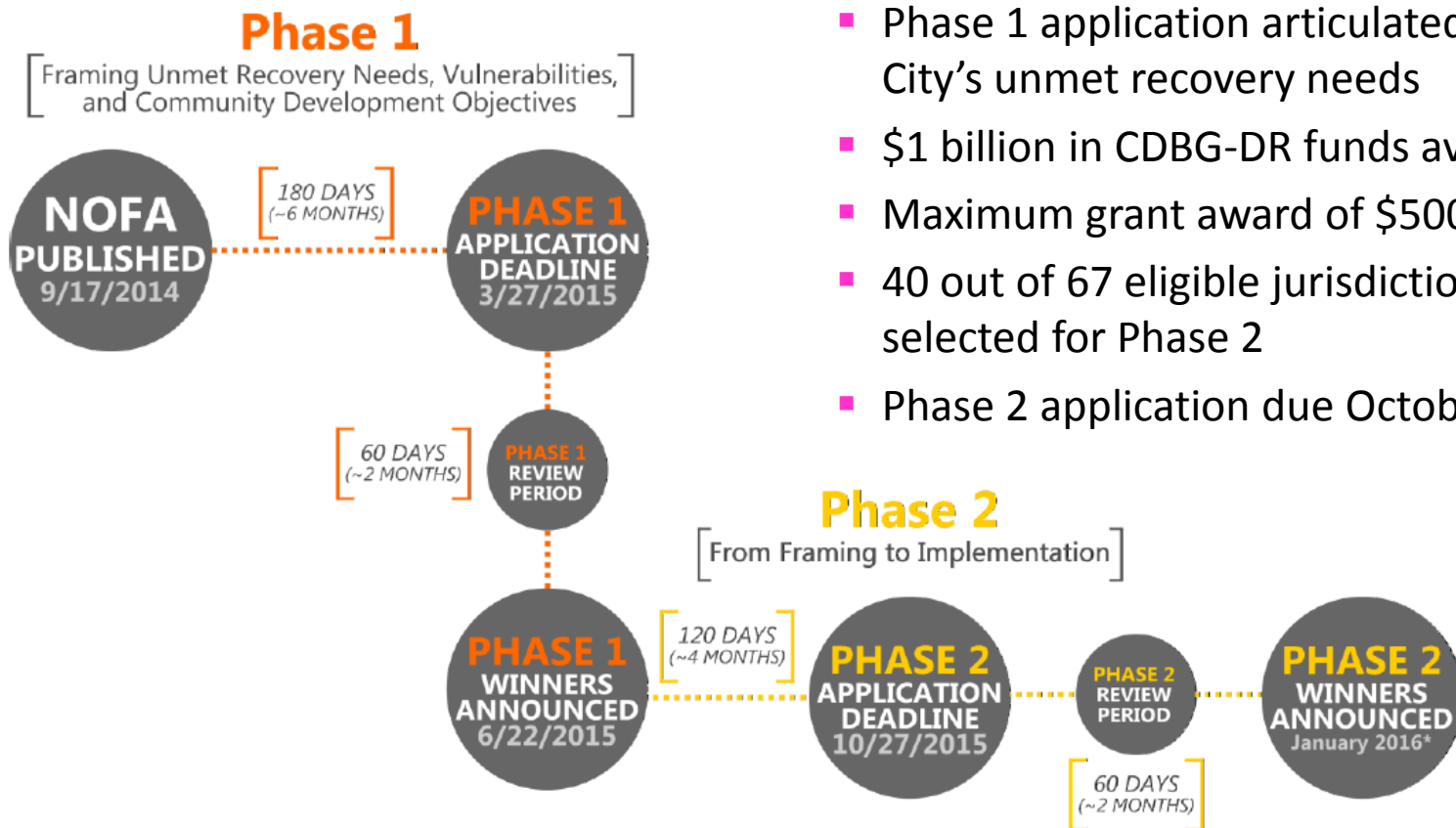
## Our Resilient City

Our neighborhoods, economy, and public services will be ready to withstand and emerge stronger from the impacts of climate change and other 21<sup>st</sup> century threats

“The City will strengthen its coastal defenses by completing many vital projects in all five boroughs, including... an integrated flood protection system for the east side of Manhattan and in Lower Manhattan south of Montgomery Street to the northern end of Battery Park City.”

# National Disaster Resilience Competition

In June, the City was selected to join Phase 2 of NDRC and is preparing an application with discrete projects that enhance our social, economic, and physical resiliency.



- Phase 1 application articulated the City's unmet recovery needs
- \$1 billion in CDBG-DR funds available
- Maximum grant award of \$500 million
- 40 out of 67 eligible jurisdictions were selected for Phase 2
- Phase 2 application due October 27

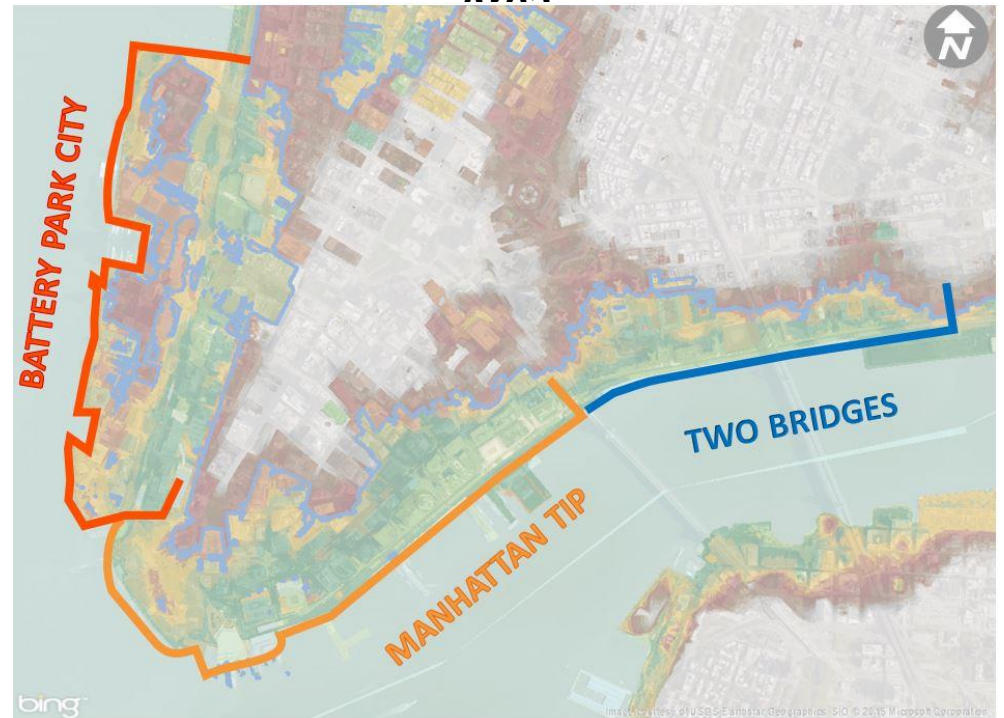
\*Note: These dates are tentative and subject to change at HUD's discretion

# Lower Manhattan Coastal Resiliency

With OneNYC, the City committed its own \$100 million in the capital budget to leverage additional NDRC funds for resiliency in Lower Manhattan.

- Coordinated planning with the East Side Coastal Resiliency project currently underway from Montgomery Street to 23<sup>rd</sup> Street
- Release of RFP for Lower Manhattan Coastal Resiliency at the end of September 2015

## Lower Manhattan Coastal Resiliency Study Area



# Lower Manhattan Protect and Connect

The City's NDRC application provides a comprehensive resiliency vision for Lower Manhattan that will protect and connect residents, businesses, and infrastructure

- Connect neighborhoods by enhancing community fabric
- Protect vulnerable city infrastructure and assets
- Enhance resiliency to help the City recover more quickly from shock and stress events

## Project Activities

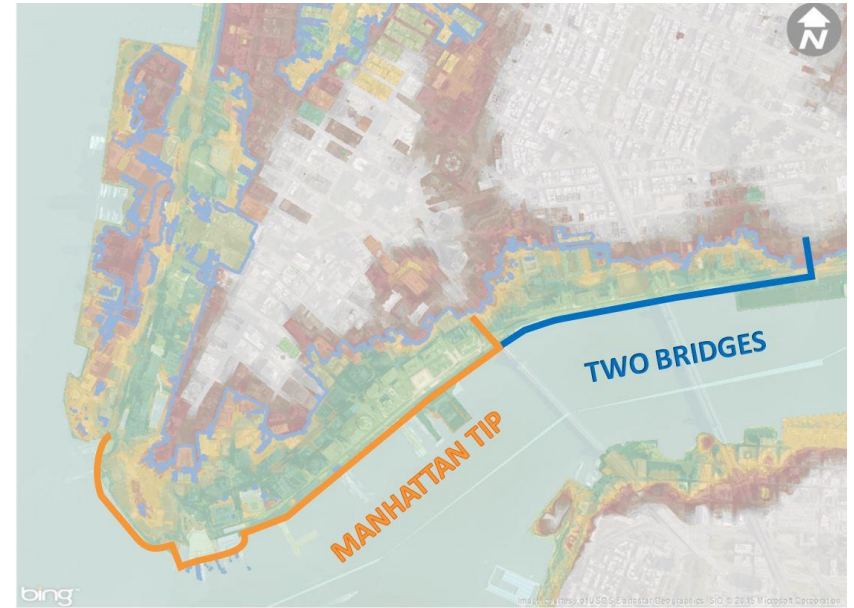
1. Coastal Flood Protection from Two Bridges to Battery Park
2. NYCHA Stormwater Management through Placemaking
3. Multi-family Resiliency Retrofit Program for affordable housing



# 1. Coastal Flood Protection

Coastal protection activities are proposed for two compartments in Lower Manhattan for the City's NDRC application

- Designed to protect residential developments, including vulnerable residents
- Concept plan for raising shorelines, constructing berms and deployable walls as flood barriers
- Additional concept for mobile pumping systems that can be deployed
- Flood protection supports a significant financial investment in infrastructure, housing, and commercial buildings





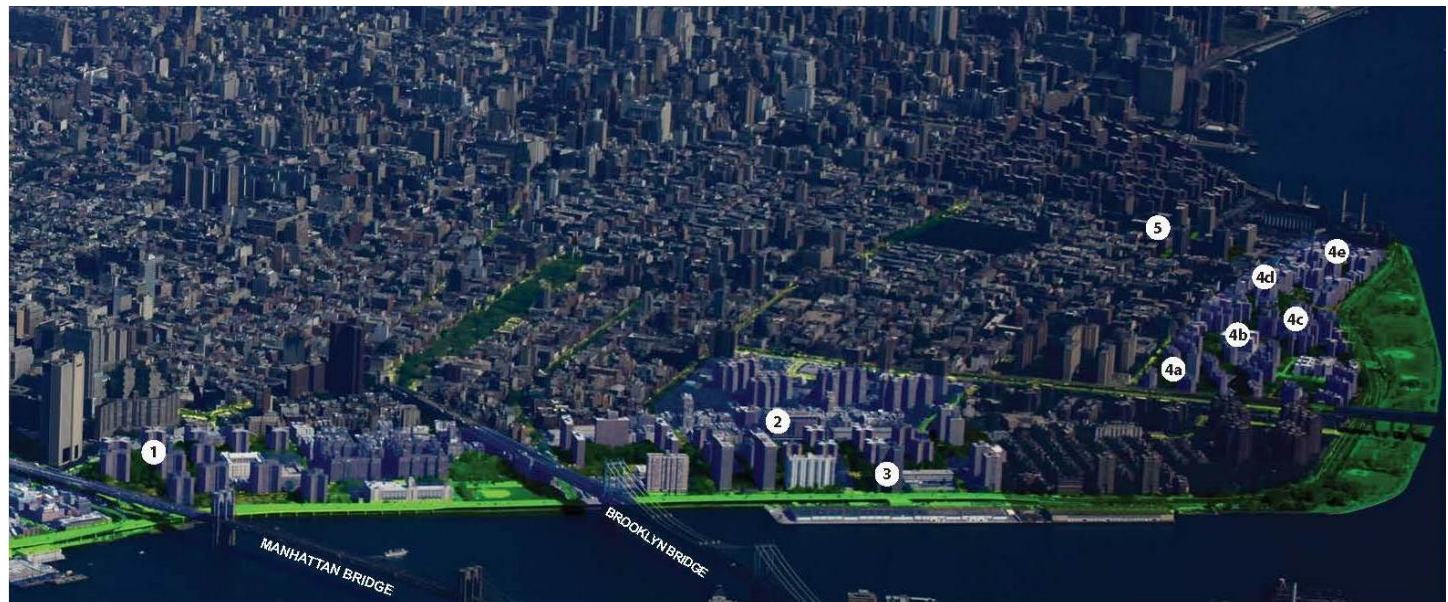
## 2. NYCHA Stormwater Management

Protection from extreme rain events and investments in public housing will increase resiliency, provide greener spaces, and improve connectivity to the neighborhood

- Stormwater management infrastructure stores water during heavy rain and storms
- Decreases street flooding and reduces flow of untreated water into the river system
- System functions as recreation, open space, walkways , parking, and green space
- Enhance current FEMA recovery investments in these properties

### Developments:

- 1 – Smith Houses
- 2 – La Guardia
- 3 – Two Bridges
- 4 – Manhattan Campus
  - 4a – Baruch
  - 4b – Lavanburg
  - 4c – Wald
  - 4d – Riss 2
  - 4a – Riss 1
- 5 – Campos 2



# 3. Multi-Family Resiliency Retrofit Program

Additional investments to city's affordable housing regulated by HPD will increase resiliency from shock and stress events

- Comprehensive resiliency improvements that will benefit more than 3,000 households
- Retrofits will include flood protection, energy efficiency, and other structural improvements
- Investments will help fulfill key goals from the City's Housing Plan, including protecting residents from future flood events and promoting affordability



## Risk Finder: New York

See More States ▼

U.S. (v1)



CHOOSE A TOOL:

Map

Forecast

Analysis

Comparison

Fast Look Reports

Searchable interactive map of sea level rise & flood risk areas

**CLICK TO EXPLORE:** [New York City](#), [Freeport](#), [Kings County](#), [Queens County](#), [Suffolk County](#), [Bronx County](#), [Westchester County](#), [New York](#), plus many more places & place types via the tool.



Quick Start Video

TECHNICAL REPORT  
New York and the Surging Sea

Science Behind the Tool

NY Resiliency Resources

FAQs

Quick Tutorials / Help

About

Feedback

Custom Analysis

RECEIVE EMAIL UPDATES

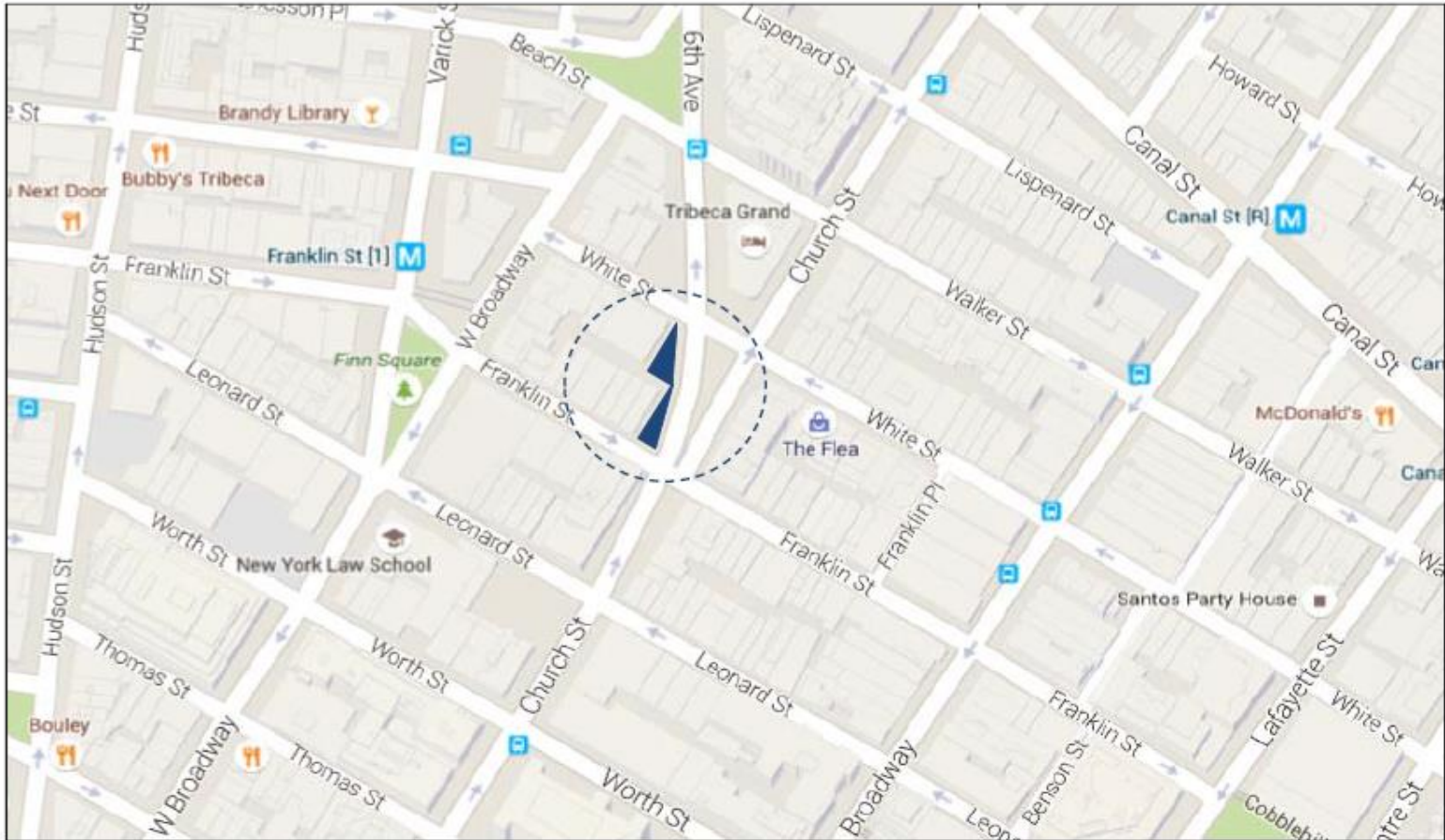
# Manhattan Community Board 1 Committee Reports

## Tribeca – E. Lewinsohn

- 1) 93 Worth Street, application for a Board of Standards and Appeals special permit for a Physical Culture establishment for 93 Worth Street Gym, LLC – Resolution
- 2) 281 Broadway, application for a Board of Standards and Appeals special permit for a Physical Culture establishment for CrossFit TriBeCa – Resolution
- 3) Application to rename the block of Sixth Avenue from Franklin Street to White Street to Avenue of the Americas – Resolution
- 4) 349 Greenwich Street, application for restaurant liquor license for 349 Greenwich Street Restaurant LLC – Resolution
- 5) 20 Warren Street, application for tavern liquor license for 20 Killarney Tavern Corp. d/b/a Tara of Tribeca – Resolution
- 6) 221 West Broadway, application for sidewalk cafe for North of Houston LLC d/b/a White Street – Resolution
- 7) 221 West Broadway, application for alteration of restaurant liquor license to permit use of a sidewalk cafe for North of Houston LLC d/b/a White Street – Resolution

# Street Renaming Proposal from Sixth Avenue to Avenue of the Americas

## 100 Franklin Street – Neighborhood Map



# Manhattan Community Board 1 Committee Reports

## Tribeca – E. Lewinsohn

- 8) 211 West Broadway, application for new liquor license for Maman Tribeca LLC – Resolution
- 9) 175 Franklin Street, application for restaurant liquor license for entity to be formed by Jean Dupuy – Resolution
- 10) Volunteer at Hudson River Park's Submerge: NYC Marine Science Festival, Saturday, Oct. 3rd, 2015, Hudson River Park's Pier 26 – Report
- 11) MBPO Tribeca Small Business Roundtable, September 16, 2015, 6:30-8:30 p.m. – Report

# Manhattan Community Board 1 Committee Report

## Financial District – R. Sheffe

- 1) Proposed Expansion of No Vending Zone – Resolution
- 2) Street Co-Naming application, submitted by Bowling Green Association, to co-name Bowling Green Plaza as Evacuation Day Plaza – Resolution
- 3) NEC Barclay St. and West Broadway, application for a newsstand – Resolution
- 4) 130 Water Street, application for a wine and beer license for New Water Café, Inc. – Resolution
- 5) 108 Greenwich Street, application for a liquor license for Suspenders and Belt LLC, d/b/a Suspenders Restaurant – Resolution
- 6) 1 Battery Park Plaza, application for a wine and beer license for Coffee House Holdings, Inc, d/b/a Starbucks Coffee #7244 – Resolution
- 7) 55 Broad Street, application for a wine and beer license for Coffee House Holdings, Inc, d/b/a Starbucks Coffee #7416 – Resolution
- 8) Governors Island Alliance Activities – Report
- 9) Broadway Reconstruction Project – Report
- 10) Earth Matter – Report

# CURRENT RESTRICTED VENDING ZONE OF THE WORLD TRADE CENTER



No food vendor shall vend on any street at any time where and when the operation of any food vending business is prohibited Pursuant to either local law or section 20-465.1 of the code and any rules promulgated pursuant thereto. No food vendor shall vend in the area including and bounded on the east by the easterly side of Broadway, on the south by the southerly side of Liberty Street, on the west by the westerly side of West Street and on the north by the northerly side of Vesey Street.

- 1 Vehicle Checkpoint Liberty St/Trinity Pl
- 2 Vehicle Checkpoint Barclay St/Washington St

These Vehicle Checkpoints currently fall outside the restricted vending zone



# PROPOSED EXPANSION OF RESTRICTED VENDING ZONE IN THE WORLD TRADE CENTER



No food vendor shall vend on any street at any time where and when the operation of any food vending business is prohibited pursuant to either local law or section 20-465.1 of the code and rules promulgated pursuant thereto. No food vendor shall vend in the area including and bounded on the:

## **EAST**

The easterly side of Broadway from the northerly side of Barclay Street to the southerly side of Liberty Street continuing west to Trinity Place on the southerly side of Liberty Street.

## **SOUTH**

The westerly side of Trinity Place continuing south from the southerly side of Liberty Street to the southerly side of Thames Street. The southerly side of Thames Street continuing west to the westerly side of Greenwich Street. The westerly side of Greenwich Street continuing north to the southerly side of Cedar Street. The southerly side of Cedar Street continuing west to the westerly side of West Street.

## **WEST**

The westerly side of West Street from the southerly side of Cedar Street to northerly side of Barclay Street.

## **NORTH**

The northerly side of Barclay Street from the westerly side of West Street to the Easterly side of Broadway

## **The reason for proposed expansion:**

- To maintain the integrity and security of Vehicle Checkpoints "1"& "2"
- To create a complete secured perimeter of the World Trade Center Campus



# Public Visitation

**2014:**

**476,000 VISITORS**

**NYC VISITORS 76%, OTHERS-24%**

**BROOKLYN 24%**

**MANHATTAN 34%**

**GOVERNORS ISLAND ALLIANCE'S  
STUDENT INTERNS and VOLUNTEERS**

served more than **40,000 visitors:**  
on-site, through programs, and online.



## **WHAT'S NEXT FOR GIA?**

- **ADVOCACY ON TOURIST HELICOPTERS**
- **BOARD DEVELOPMENT**
- **INCREASED FUNDRAISING FOCUS**
- **CLOSE COORDINATION BETWEEN GIA AND TRUST FOR GOVERNORS ISLAND**

# Reconstruction of Broadway Phase I (Rector Street to Ann Street)

Project ID: HMMWTCA6A  
August 2013 to August 2017

Contract Value: \$47,525,296.87

Broadway Phase 1 Committee Presentation  
Wednesday September 2, 2015  
CB # 1 (Manhattan)  
1 Centre St. Rm 2202A North  
New York, NY 10007

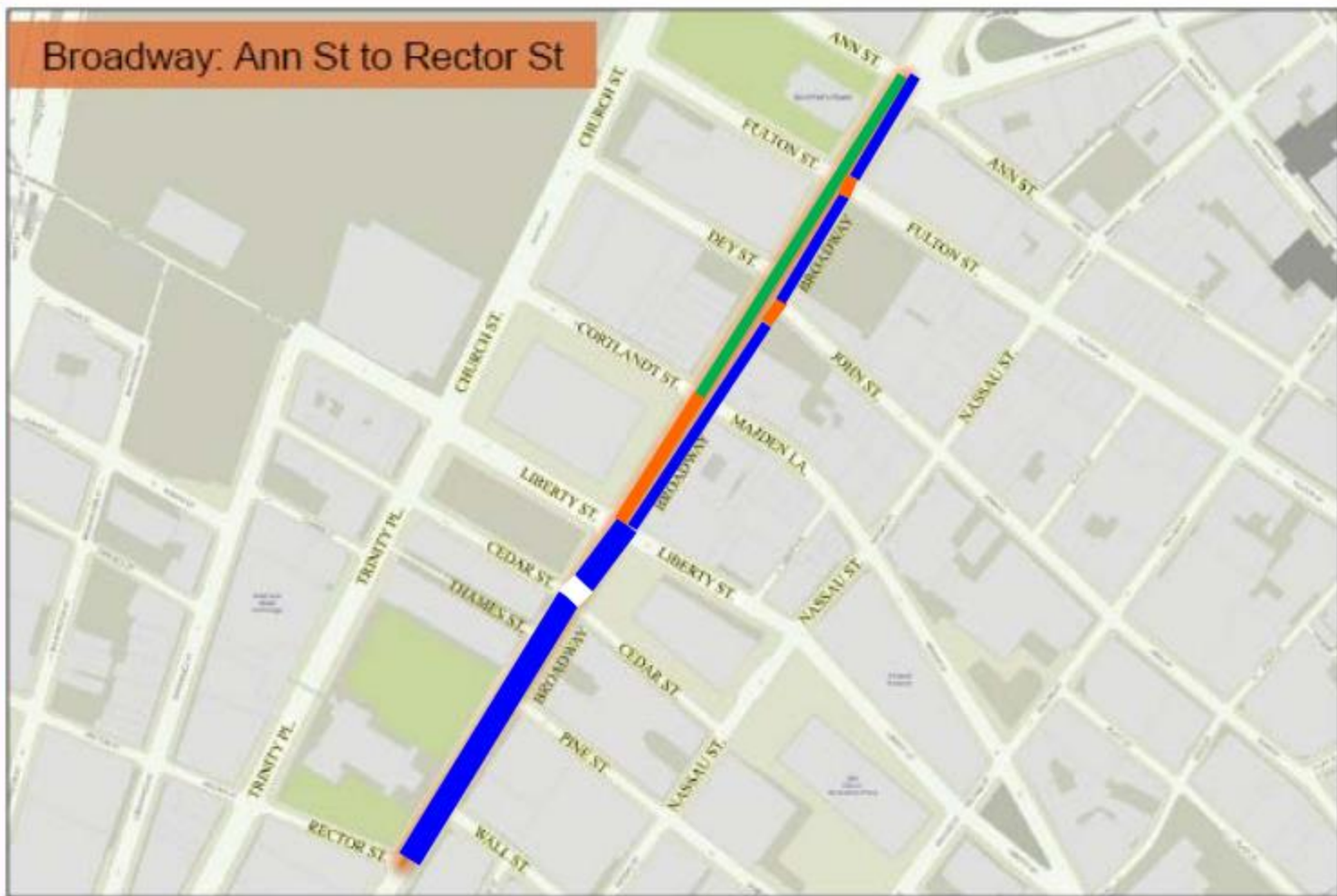
# BROADWAY PHASE 1: CONSTRUCTION STATUS-UPDATE

UNDERGROUND WORK COMPLETE-TEMPORARILY PAVED █

CURRENT WORK AREA █

UPCOMING WORK █

Broadway: Ann St to Rector St



## SCHEDULE:

- Notice to Proceed: 8/5/13
- Completion: 8/5/17

## BUDGET:

- Contract Amount: \$41,525,296.87
- Percent of Work Complete: 51.7%

# PROJECT DURATION

- Original Contract Duration 1460 (CCD)
- Start Date: 08/05/2013
- End Date: 08/05/2017
- Time Extension: None



# Presentation to CB #1 Finance Committee

September 2, 2015



-  @earthmatterNY
-  @earthmatterNY
-  <https://www.facebook.com/EarthMatterNY>



# Our Mission

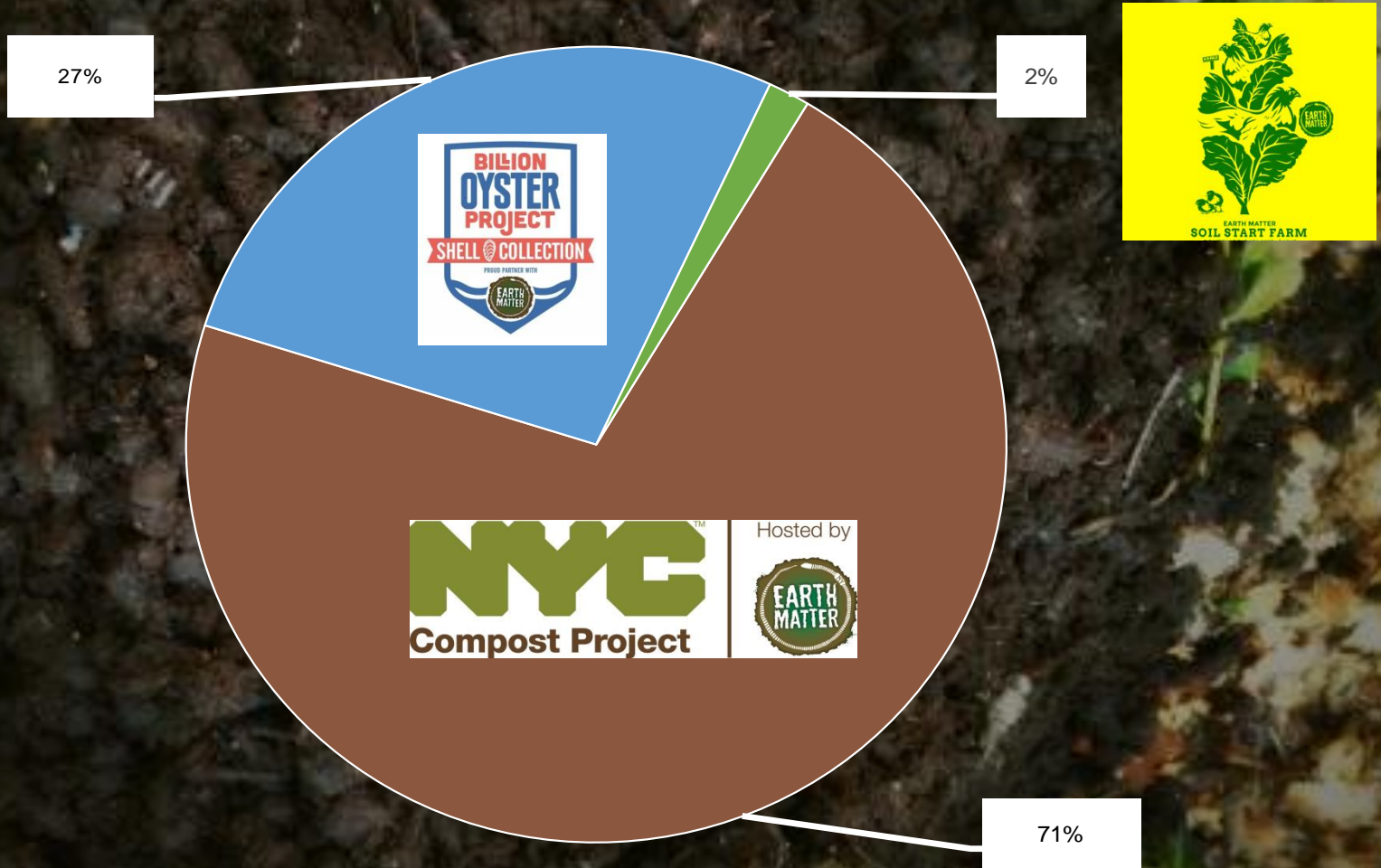
Earth Matter NY seeks to reduce the organic waste misdirected into the garbage stream by encouraging neighbor participation and leadership in composting.



Ft. Greene Compost Project  
2006



# Earth Matter Program Funding



# Soil Start Farm

## Proposal to Community Board #1

Fund a farm manager / educator to engage K-12 classes and all residents in CB #1, coordinate farm cooperators, and pilot a downtown CSA.



Mary Ng cooperators,  
downtown resident



Battery UrbanFarm/EM  
apprentice + our NYHS  
intern



Battery Park City School P.S/IS 276

# Manhattan Community Board 1 Committee Reports

## Youth & Education – P. Hovitz

- 1) School Register Numbers – Report
- 2) Status of new school in Financial District – Report
- 3) Update on Peck Slip street closure and safety procedures – Report
- 4) Need for crossing guards at each Downtown school – Report
- 5) 2015 CB1 exam scores – Report

# Manhattan Community Board 1 Committee Reports

---

## Battery Park City – A. Notaro

- 1) Ritz-Carlton Hotel residents report by Sol Reischer – Resolution
- 2) BPC Parks Conservancy – Report
- 3) Battery Park City Authority – Report
- 4) BPC Parks Enforcement Patrol – Report

# NEW YORK'S BATTERY PARK CITY



# Manhattan Community Board 1

---

## Old Business

# Manhattan Community Board 1

---

## New Business

1) Elizabeth Berger Plaza renovation – Resolution



**NYC Parks**

# **ELIZABETH BERGER PLAZA**

Located near Edgar Street, Greenwich Street  
and Trinity Place, Borough of Manhattan

Commissioner Review

February 26, 2015

G. Vellonakis, RLA; L. Drawbaugh, RLA; Heather Faivre, ALA  
Parks Capital Design



## GOALS

- Unite two green spaces into one
- Increase pedestrian safety
- Provide a pedestrian link from the 911 Memorial to Battery Park
- Increase green space
- Provide a place of refuge in a busy urban setting

**PROJECT SIZE:** 0.68 Acre



NYC Parks

**ELIZABETH BERGER PLAZA| Goals**



Elizabeth Berger Plaza

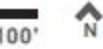
Exit from Brooklyn Battery Tunnel

Trinity Plaza



NYC Parks

ELIZABETH BERGER PLAZA | Site Location relative to Brooklyn Battery Tunnel



100'





New Crosswalks (Typ.)    Mound    Stone wall, typ.    ADA bluestone flagstone    Asphalt block



ELIZABETH BERGER PLAZA | Proposed Design





ELIZABETH BERGER PLAZA| Proposed Design



"M Pole"



"B Pole"



Subway Entrances



Asphalt Hex Block



'39 World's Fair's bench



Flagstone



Type "F" Drinking fountain



# Manhattan Community Board 1

---

## Adjournment

Thank you and goodnight!