



# Manhattan Community Board 1

## Full Board Meeting

Thursday, November 20, 2014

6:00 PM

Southbridge Tower  
90 Beekman Street, Community Room

Catherine McVay Hughes, Chairperson  
Noah Pfefferblit, District Manager  
Diana Switaj, Director of Planning  
Lucy Acevedo, Community Coordinator  
Michael Levine, Planning Consultant  
Tamar Hovsepian, Community Liaison

# Manhattan Community Board 1

---

## Public Session

Comments by members of the public  
(6 PM to 7 PM)

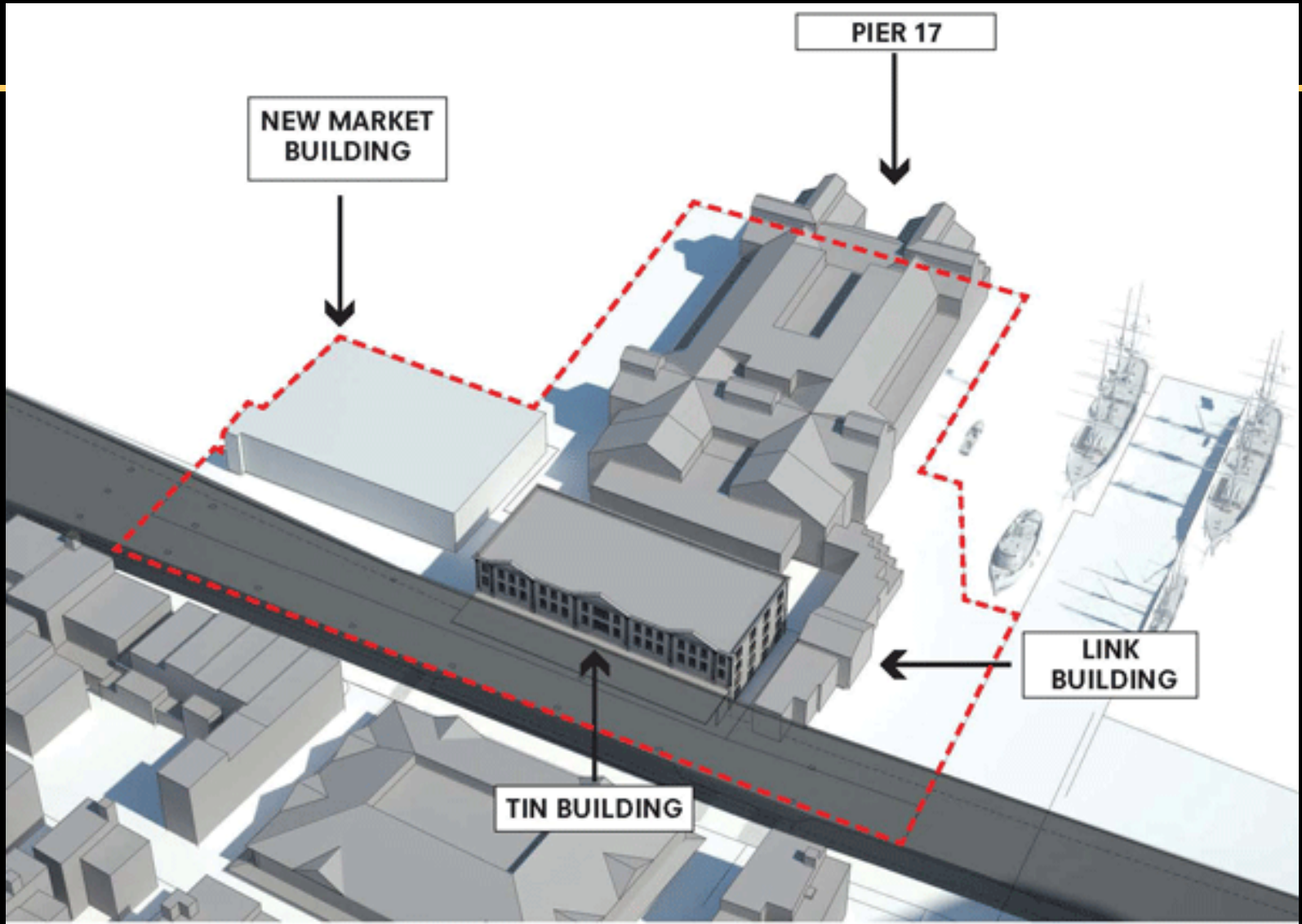
(Please limit to 1-2 minutes per speaker, to allow everyone to voice their opinions)

# Manhattan Community Board 1

---

## Business Session

- Adoption of October 2014 minutes
- Chairperson's Report – C. McVay Hughes
- District Manager's Report – N. Pfefferblit



**SOUTH STREET SEAPORT // OPEN SPACE // PROPOSED OPEN SPACE // EXISTING VIEW OF FULTON PLAZA**



**SOUTH STREET SEAPORT // OPEN SPACE // PROPOSED OPEN SPACE // PROPOSED VIEW OF FULTON PLAZA**



**SOUTH STREET SEAPORT // PRESERVATION // TIN BUILDING // EXISTING WEST TIN BUILDING FACADE**



SOUTH STREET SEAPORT // PRESERVATION // BUILDINGS AND SCALE // TIN BUILDING // PROPOSED TIN PLAZA VIEW



SOUTH STREET SEAPORT // BUILDING HEIGHT + VIEWS // NEW BUILDING // PIER 17 REDEVELOPMENT AERIAL VIEW





SOUTH STREET SEAPORT // BUILDING HEIGHT + VIEWS // NEW BUILDING // THE SEAPORT DISTRICT AERIAL VIEW



# Manhattan Community Board 1

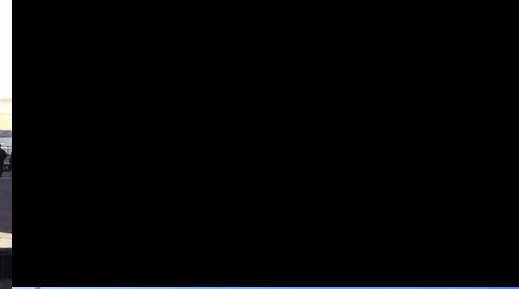
## Seaport Working Group Meetings

- Seaport Working Group follow-up meeting to provide additional feedback to HHC (12/03/14)
- CB1 Special Landmarks Committee Meeting 1 of 2 to consider application for Tin Building, Pavilions under FDR Drive and Link Building by Howard Hughes Corporation (Wednesday, 12/10/14 – location TBD)
- CB1 Special Landmarks Committee Meeting 2 of 2 for above – Resolution (Monday, January 12, 2014 – location TBD)
- Landmark Preservation Commission public hearing likely in January 2015

# Manhattan Community Board 1



Pier A is now open



**PHOTO 1** - General view of pier and timber perimeter pier good condition looking southwest.



**PHOTO 2** - North bulkhead wall concrete block with stone block cap up to 100% missing mortar in joints looking east.



# Manhattan Community Board 1

## FULTON CENTER OPENING – 11/10/14



# Manhattan Community Board 1

Peck Slip parking – “No Standing Anytime” signs installed – 10/30/14



# Manhattan Community Board 1

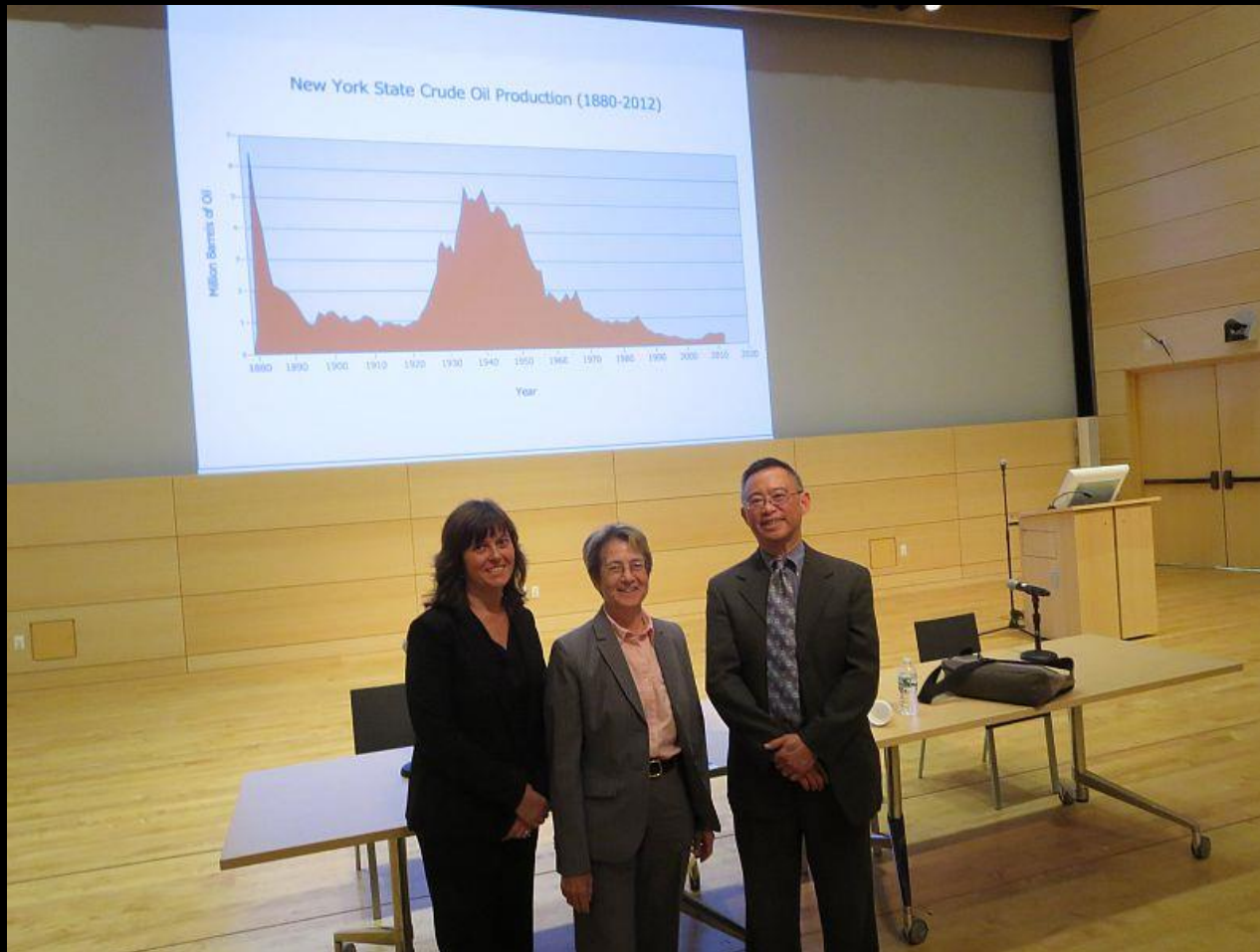
## 1 World Trade Center CB1 Tour - 11/14/14



Photos by Bob Schneck

# Manhattan Community Board 1

Town Hall meeting on hydrofracking co-sponsored with Assemblymember Glick – 10/29/14



# Manhattan Community Board 1

## 26<sup>th</sup> Senate District Community Convention: Continuing the Conversation

Senator Squadron Invites You to a

### Tenant Town Hall



On Issues Raised at His Community Convention

followed by a

### Tenant Resource Fair

**Tue, Dec. 2, 6:30 pm**

PS 142, 100 Attorney St, Manhattan  
(Between Delancey and Rivington)

In cooperation with

Congressmember Maloney and Congresswoman Velazquez, Assembly Speaker Silver, Public Advocate James, Comptroller Stringer, Manhattan Borough President Brewer, State Senator Hoylman, Assemblymembers Glick, Kavanagh, & Lentol, Councilmembers Chin, Johnson, and Mendez, and Manhattan Community Boards 1, 2 and 3

**RSVP at [squadron.nysenate.gov](http://squadron.nysenate.gov) or by calling 212-298-5565**

This activity is not sponsored or endorsed by the New York City Department of Education or the City of New York.

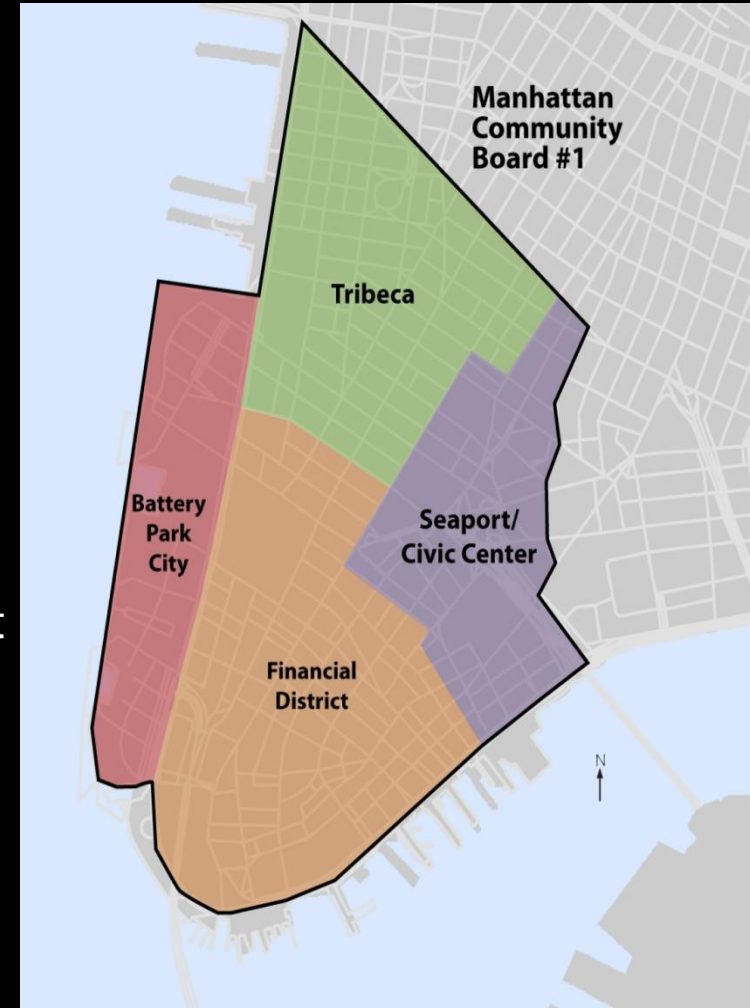


# Manhattan Community Board 1

## Committee Reports

### Planning Committee - J. Galloway

1. Newsstand application, S/W/C Dey Street & Broadway – Resolution
2. West Thames Street Pedestrian Bridge – Resolution
3. Anti-fracking initiatives – Resolution
4. Report on updates by Lusheena Warner, Assistant Vice President, Government and Community Affairs, NYC Economic Development Corporation
  - a. East River Esplanade Signage and Logo
  - b. Neighborhood Game-Changer Investment Competition
  - c. Helicopter Tourism in Lower Manhattan



# Newsstand S/W/C Dey Street & Broadway

Photographs taken on Saturday, November 8, 2014

# Broadway & Dey Street S/W/C

Fulton Center Dey Street Headhouse  
location of proposed newsstand



# Broadway & John Street S/E/C Existing Newsstand

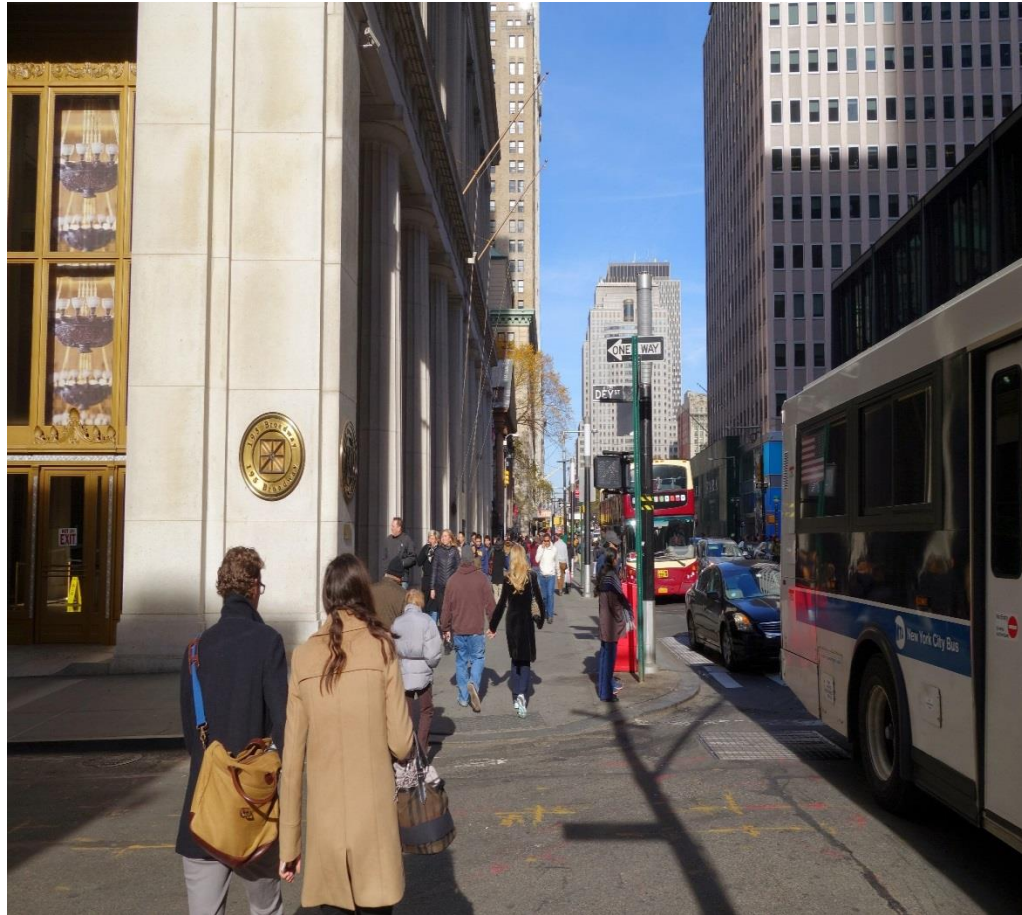


# Broadway & John Street N/E/C Fulton Center's Corbin Building is Landmarked



# Broadway & Dey Street N/W/C

## 195 Broadway is Landmarked



# Broadway & Dey Street S/W/C



# Broadway & Dey Street S/W/C

Broadway Reconstruction Project will move from east side to west side in front of Dey Street Headhouse





# Summary

The proposed newsstand will:

- **Obstruct** visual access to this new gateway
- **Constrict** pedestrian flow at a busy intersection
- **Block** signage and information from a number of angles

All in all, exhibit poor urban design principals.

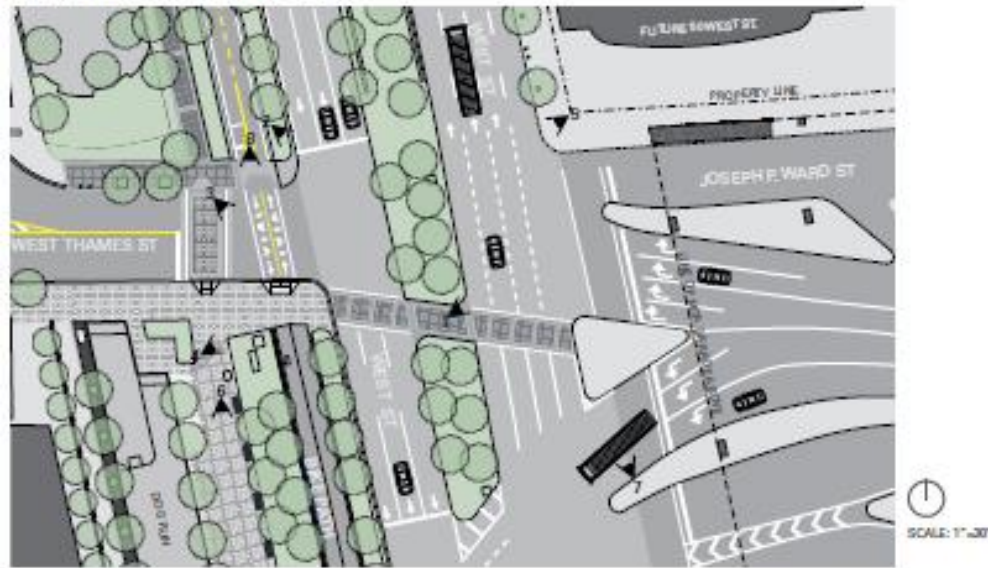
# WEST THAMES STREET PEDESTRIAN BRIDGE

Planning and Battery Park City Committee

11.10.2014



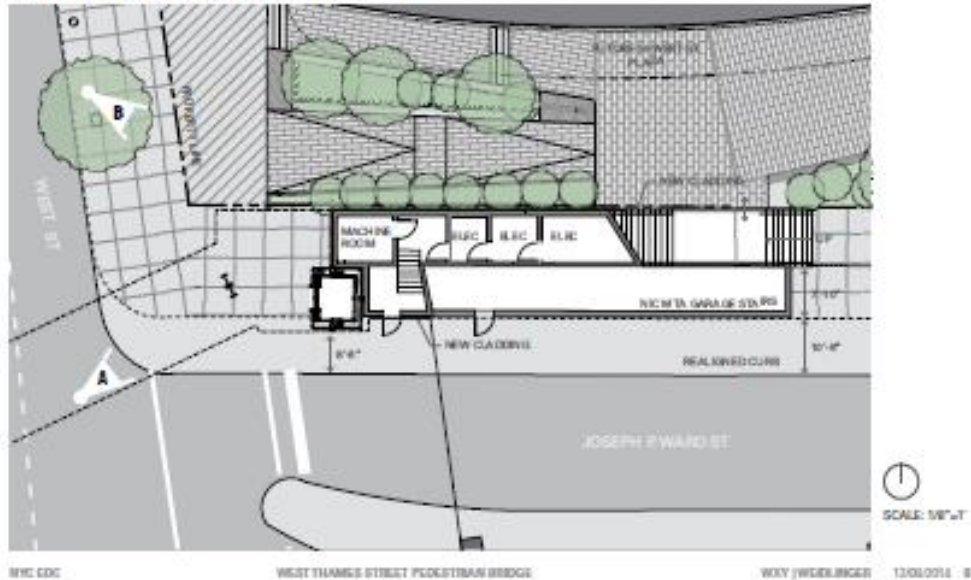
EXISTING CONDITIONS LAYOUT - PLAN



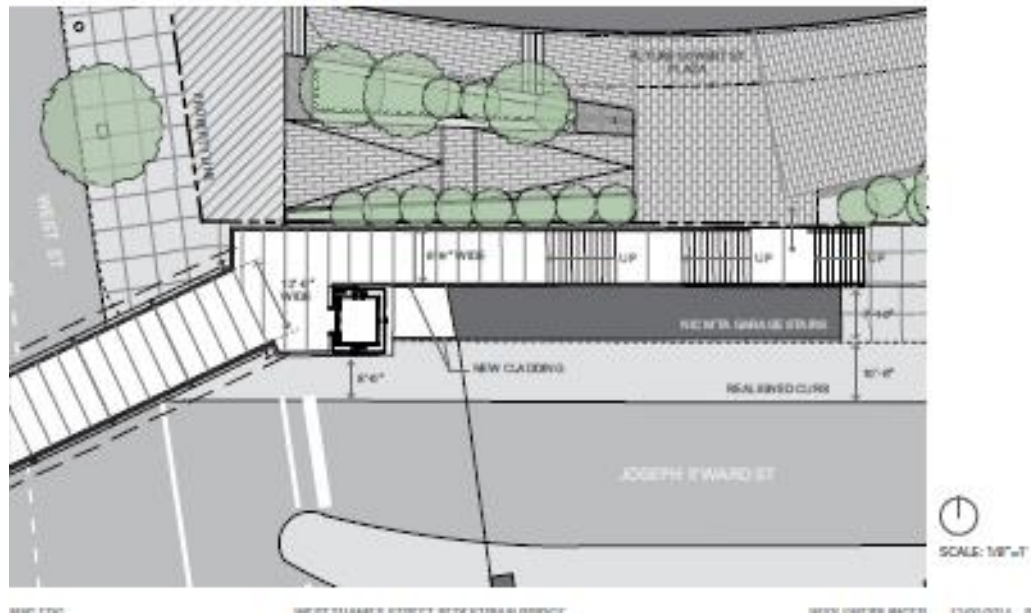
PROPOSED LAYOUT - RAIN GARDEN PLAN



EAST LANDING DETAIL PLAN AT STREET LEVEL



EAST LANDING DETAIL PLAN - BRIDGE LEVEL



STREET VIEW LOOKING WEST - RENDERING



NYC EDC

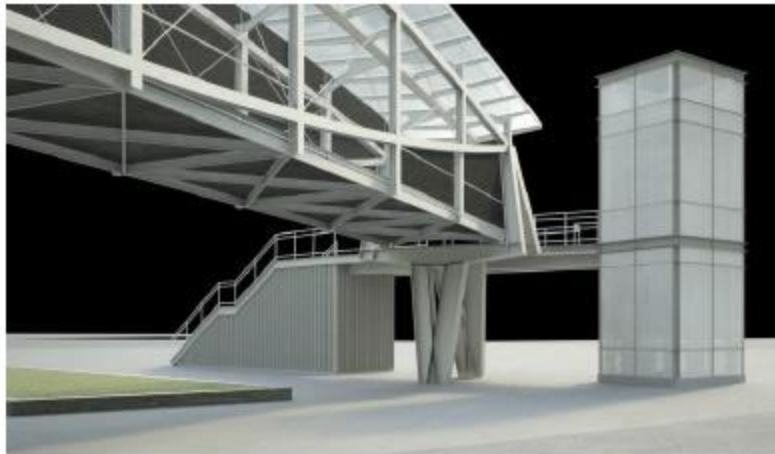
WEST FARMS STREET PEDESTRIAN BRIDGE

WXY (WHEELINGER) 12/08/2014 30

INTERIOR LOOKING WEST - RENDERED VIEW



STREET VIEW LOOKING EAST - RENDERING

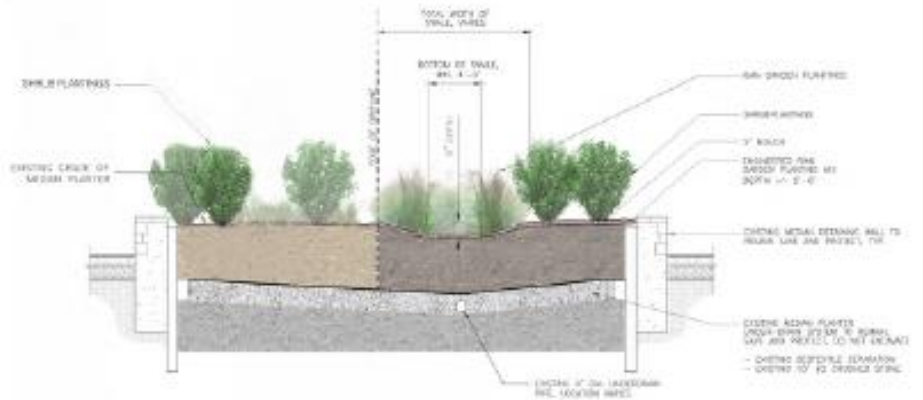


NYC EDC

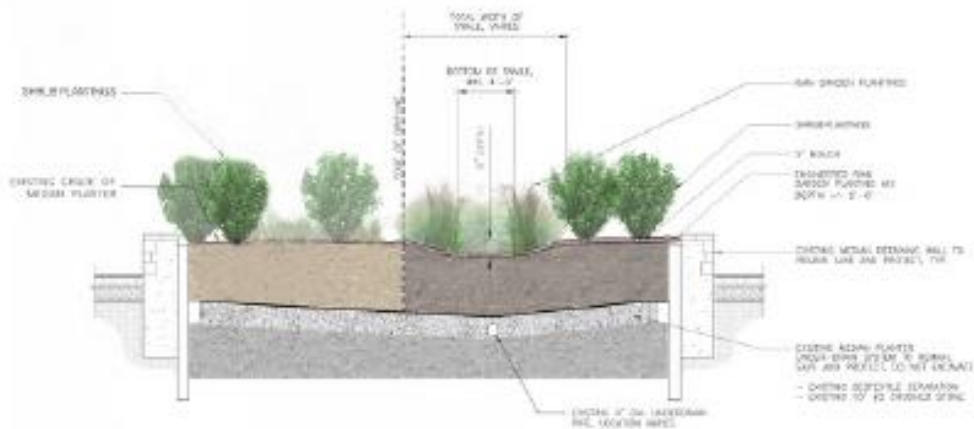
WEST FARMS STREET PEDESTRIAN BRIDGE

WXY (WHEELINGER) 12/08/2014

RAIN GARDEN - TYPICAL SECTION A-A



RAIN GARDEN - TYPICAL SECTION A-A





CASE STUDIES  
LINCOLN CENTER BRIDGE



CASE STUDIES  
COLUMBIA CAMPBELL SPORTS CENTER



0000 0000

0000 0000 STREET PHOTOGRAPH SERVICE

0000 0000 0000 0000

## Examples of Uncovered Stairs

PREVIOUS ROOF AT STAIRS- RENDERED VIEW

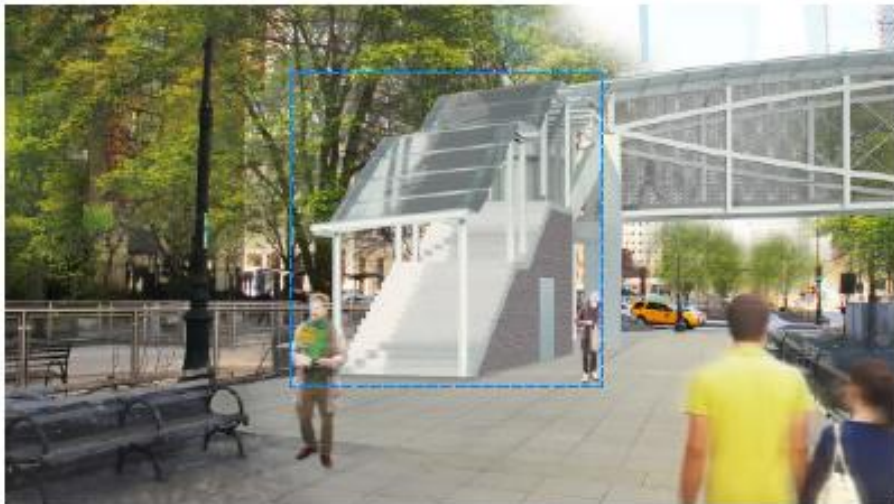


NYC EDC

WEST THAMES STREET PEDESTRIAN BRIDGE

WKY | WICKLINGER 12/02/2014 23

PREVIOUS ROOF AT STAIRS- RENDERED VIEW



NYC EDC

WEST THAMES STREET PEDESTRIAN BRIDGE

WKY | WICKLINGER 12/02/2014 24



# East River Esplanade Logo and Signage

Community Board 1 Presentation  
November 2014

**Akkurat Bold**

**ABCDEFGHIJKLMNOPQRSTUVWXYZ**

**abcdefghijklmnopqrstuvwxyz**

**0123456789**

Akkurat Regular

ABCDEFGHIJKLMNOPQRSTUVWXYZ

abcdefghijklmnopqrstuvwxyz

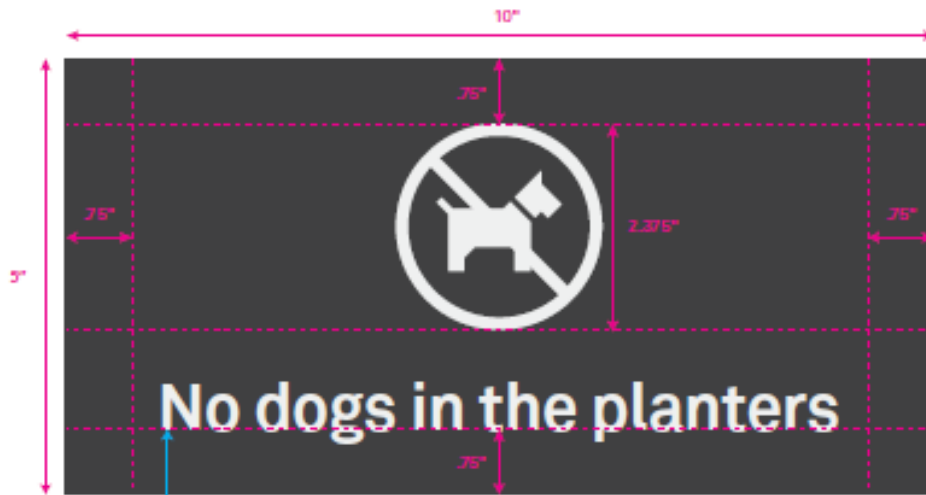
0123456789

Akkurat Light

ABCDEFGHIJKLMNOPQRSTUVWXYZ

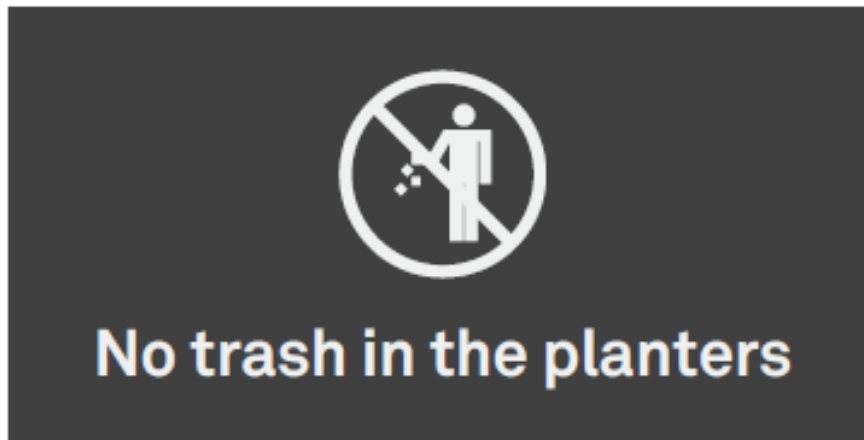
abcdefghijklmnopqrstuvwxyz

0123456789



**Text Styling**  
Font: Akkurat Bold  
Size: 54pt / Tracking: -10

### Typical Layout Guidelines Type W-P



### Type W-NT

# Manhattan Community Board 1 Committee Reports

## Landmarks Committee – B. Ehrmann

1. 56 Warren Street, application for replacement of bluestone pavers – Resolution
2. 60 Collister Street/157 Hudson Street, application for one-story addition to five story building – Resolution
3. 1 White Street, application for storefront renovation, handicapped access ramp and bulkhead and rooftop garden – Resolution
4. East side of West Broadway between Warren and Murray Streets – Report

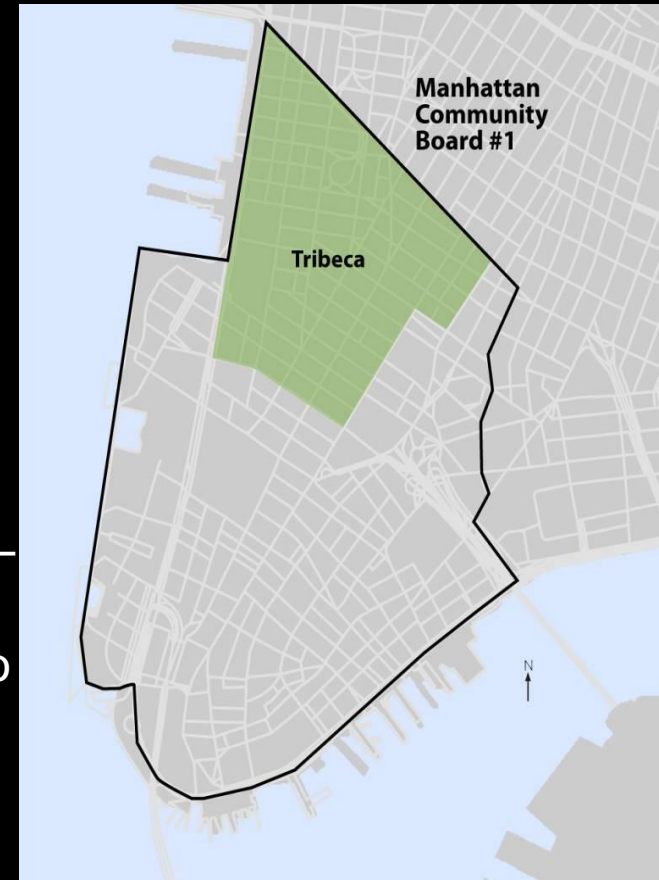


# Manhattan Community Board 1

## Committee Reports

### Tribeca Committee - J. Ehrlich

1. 99-100 Franklin Street, BSA application – Resolution
2. 11 Sixth Avenue, application for enclosed sidewalk cafe for Eleven Food and Beverage Corporation – Resolution
3. The Washington Market School Block Party street activity application for Duane Street between Church Street and West Broadway on Saturday, May 9, 2015 – Resolution
4. 67 Murray Street, application for liquor license for Kinjo Inc. d/b/a Gunbae – Resolution
5. 313 Church Street, application for renewal of liquor license – Resolution
6. 67 Reade Street, application for restaurant wine and beer license for New Sun Café Japanese Cuisine Inc. – Report
7. Worth Street Reconstruction Project – Report



FRANKLIN STREET

GREEN ROOF

ROOF OVERHANG

TERRACE ON 6TH FLOOR WITH INTEGRATED PLANTERS

OUTDOOR SPACE AT CELLAR LEVEL WITH 6'-0" TALL PERIMETER FENCE

GREEN ROOF

TERRACE ON 8TH FLOOR WITH INTEGRATED PLANTERS



SIXTH AVENUE

1" = 10'

RENDERED





COMPLYING



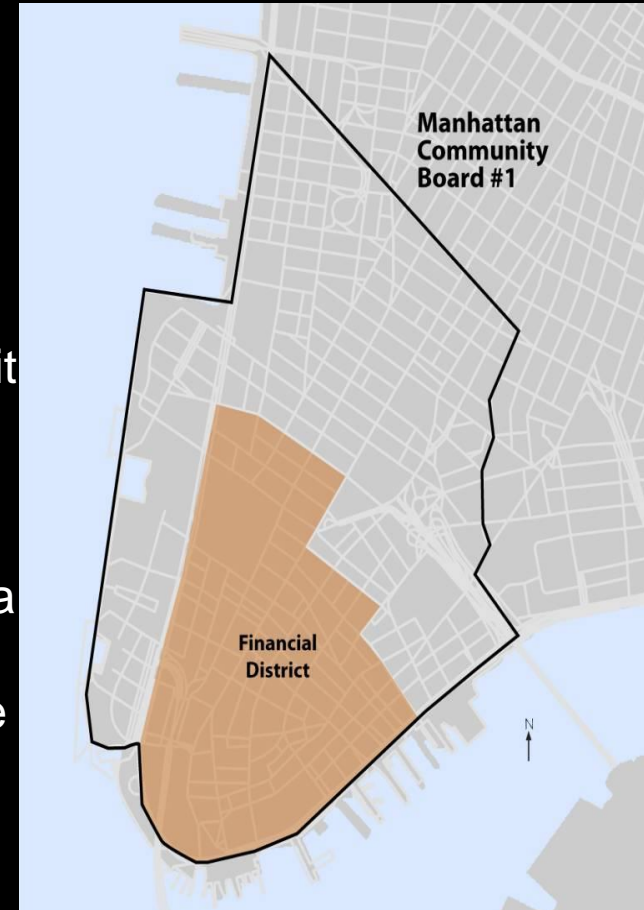
PROPOSED



# Manhattan Community Board 1 Committee Report

## Financial District Committee – R. Sheffe

1. 68-74 Trinity Place/103-109 Greenwich Street, BSA – Resolution
2. 55 Broadway, application for renewal of a special permit that facilitated certain public space improvements at 55 Broadway – Resolution
3. 26 Murray Street, application for a wine and beer license for Emma 57 LLC, d/b/a Famous Famiglia Pizza – Resolution
4. 4 South Street, alteration application for a liquor license for H.E. MGMT at Staten Island Ferry Inc., d/b/a Brass Tap Beer – Resolution
5. Double Decker Tour Buses on Broadway – Report
6. Governors Island – Report
7. World Trade Center Campus Security Plan – Report
8. Manhattan By Sail – Report



# Today: Programming needs not being met



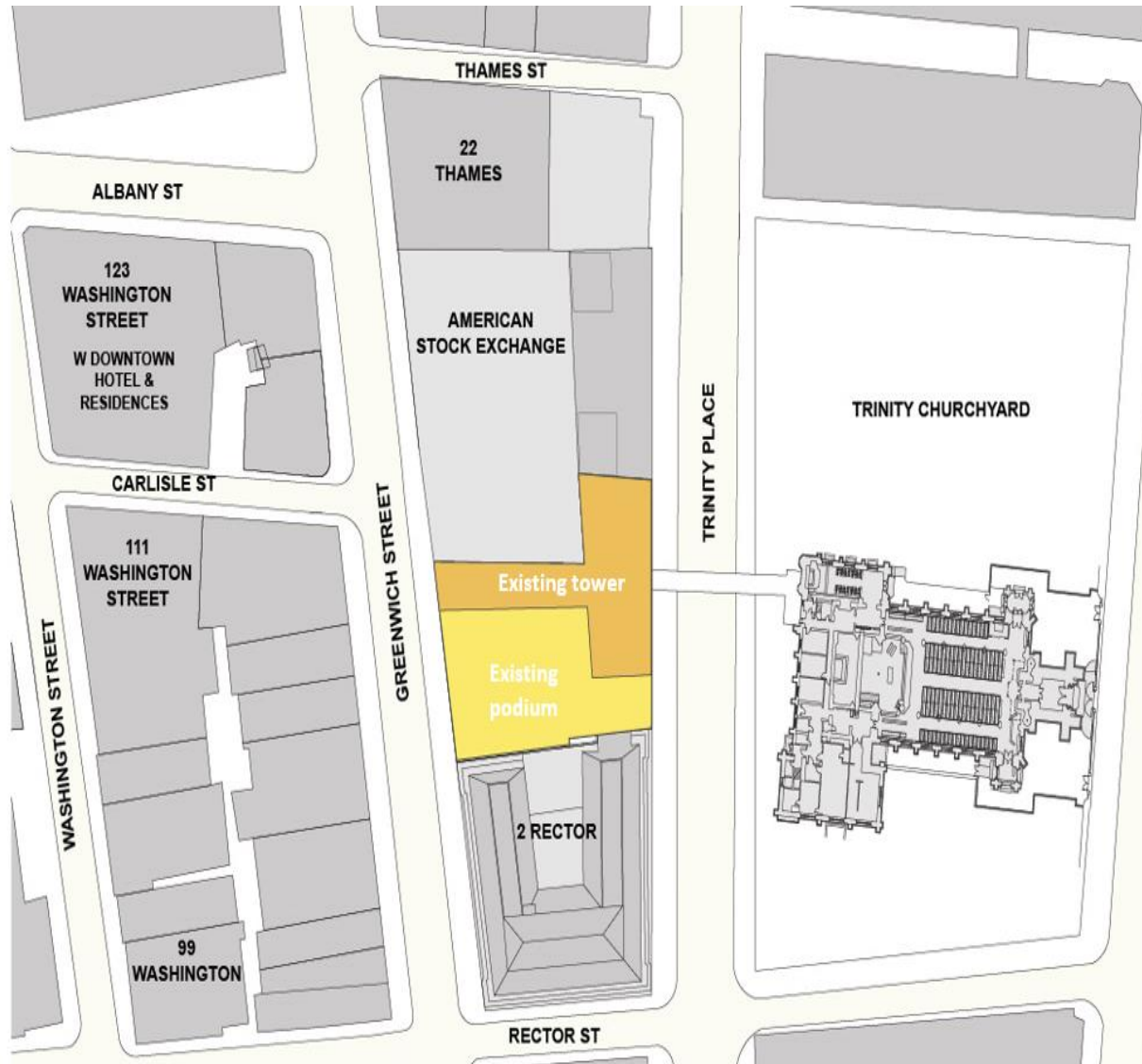
EXISTING FACADE AT TRINITY PLACE



EXISTING SPLIT BUILDING

The floors of the existing buildings are not aligned, making movement between spaces difficult and dividing otherwise related uses.

# Current Site Plan



# Rear yards on irregular 'interior lots' impact Parish Hall programming

COMMUNITY FACILITY AND RESIDENTIAL TOWER AT 68/74 TRINITY PLACE

BLOCK 51, LOT 7 BOUND BY GREENWICH STREET TO THE WEST AND TRINITY PLACE ON THE EAST.

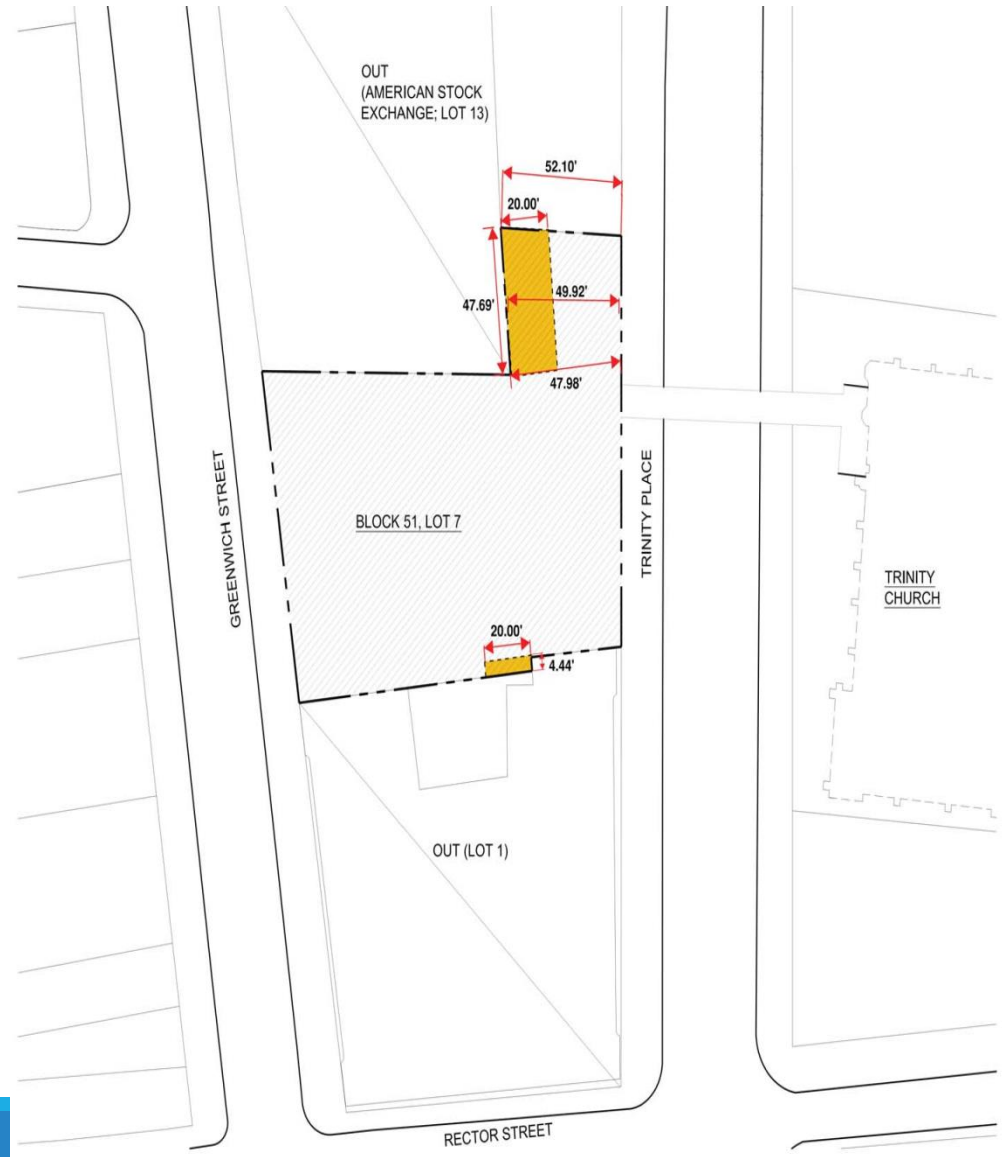
PLATE 2 LANDBOOK; ZONING MAP 12B.

LOT AREA SQUARE FOOTAGE: 16,742 SF

SPECIAL LOWER MANHATTAN DISTRICT

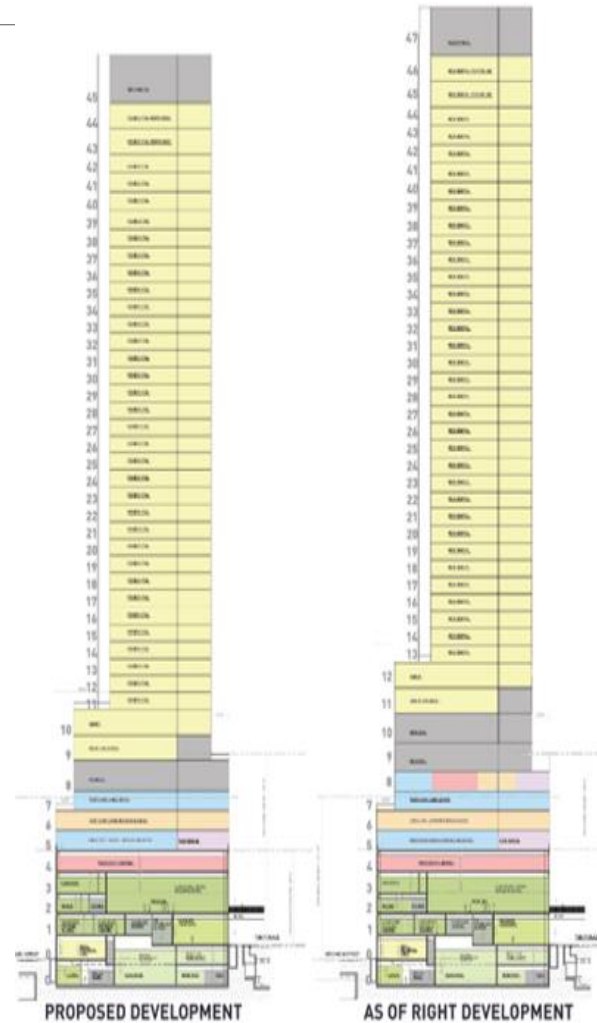
C5-5 DISTRICT; R10 EQUIVALENT

BASIC MAXIMUM FAR: 15



1 SITE PLAN  
100 SCALE: 1/30" = 1'-0"

# Stacking Section Comparison



Set back relief will allow the Church to accommodate its programmatic needs and lower overall height

# Governors Island: Making Progress on Every Front



# Governors Island Welcomed More Visitors and Programming Organizations Than Ever Before

- ✓ Island welcomed 475,000 total visitors over course of the season
- ✓ Major increase in number and diversity of programming organizations through OpenHouseGI
- ✓ Visitors overwhelmingly came from all five boroughs





## WTC TOWER 4 - LIBERTY AND TRINITY ENTRANCE

- Screening Entrance currently under construction
- Estimated completion First quarter 2015







## TOWER 4: LIBERTY AND TRINITY ENTRANCE





## VSC ENTRANCE (S/B WEST ST & LIBERTY ST)

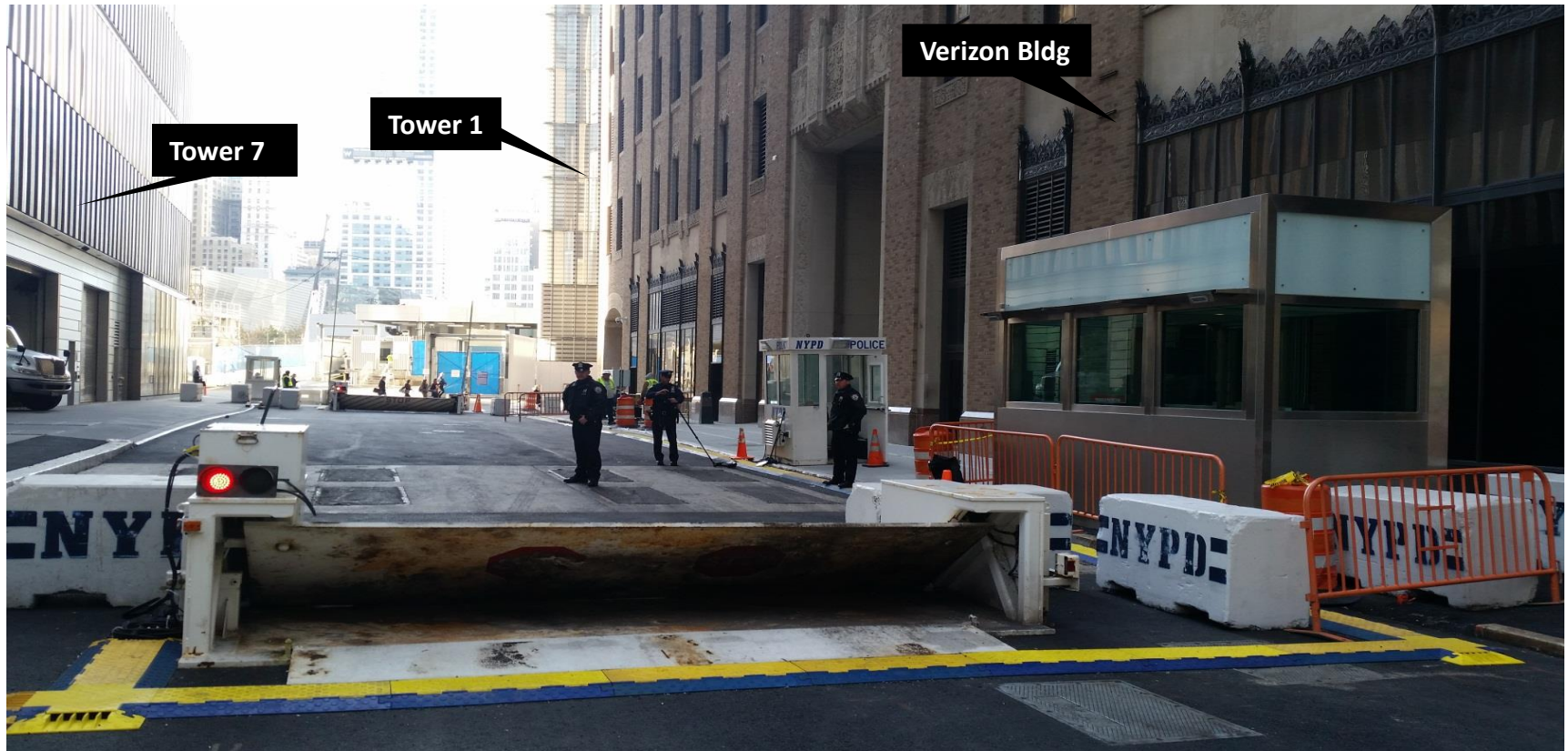
- Screening Inside VSC
- Almost All Commercial vehicles making deliveries to campus to use this entrance





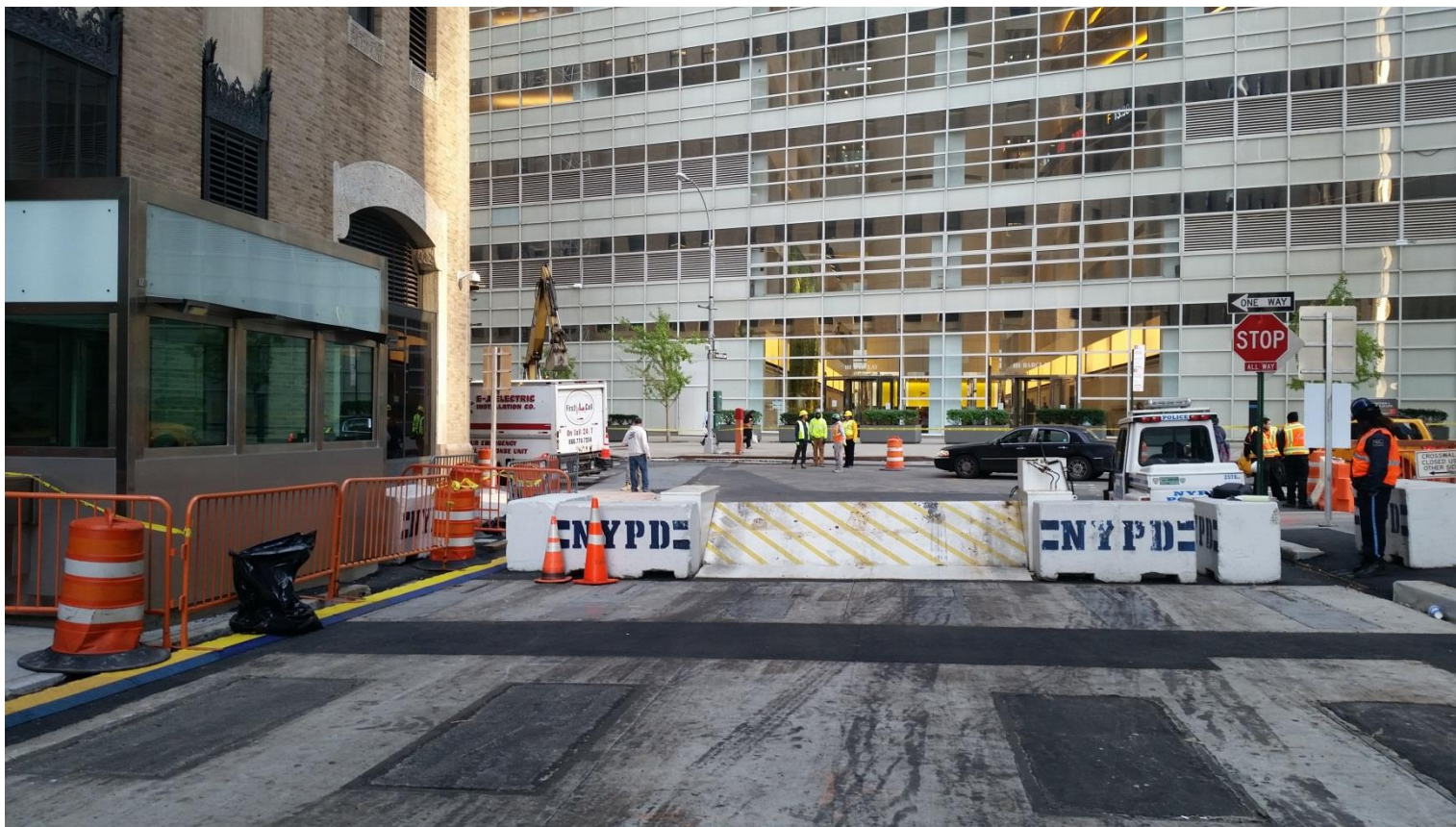
## WTC TOWER 1 INTERIM SECURITY MEASURES

- WASHINGTON ST, BARCLAY ST TO VESEY ST





## TOWER 1: ENTRANCE TO TOWER 1 (TEMPORARY NYPD BARRIERS)





## TOWER 1: EXIT FROM VESEY ST & WEST ST



MANHATTAN

BY

SAIL



NEW YORK



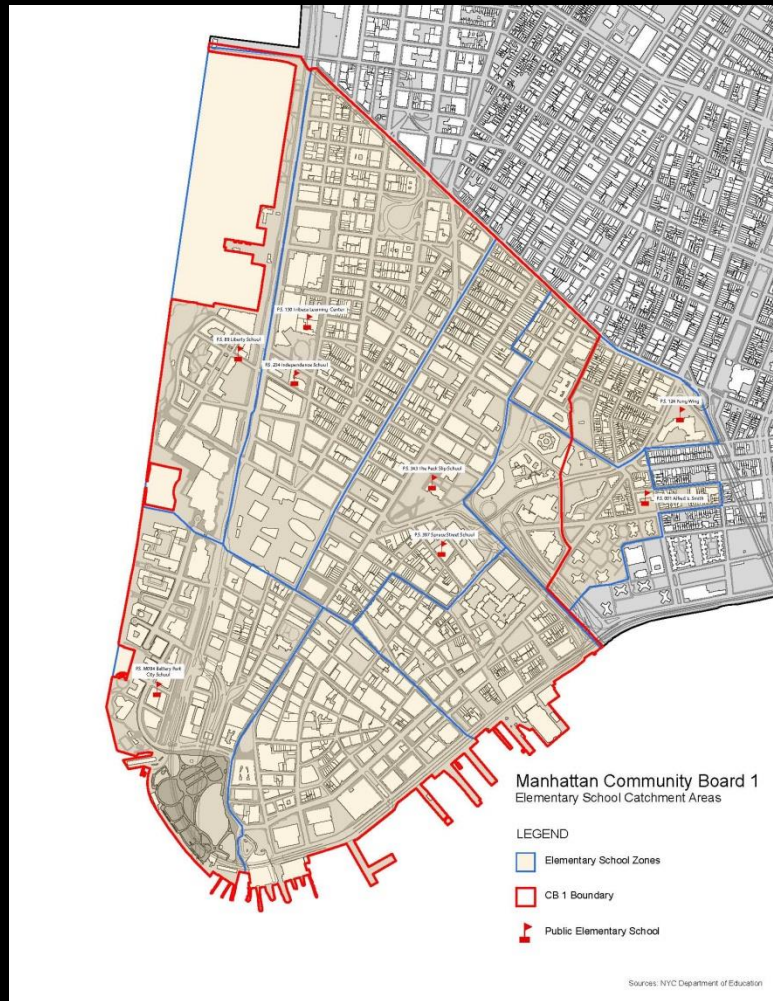
# Manhattan Community Board 1 Committee Reports

## Youth & Education Committee – T. Joyce

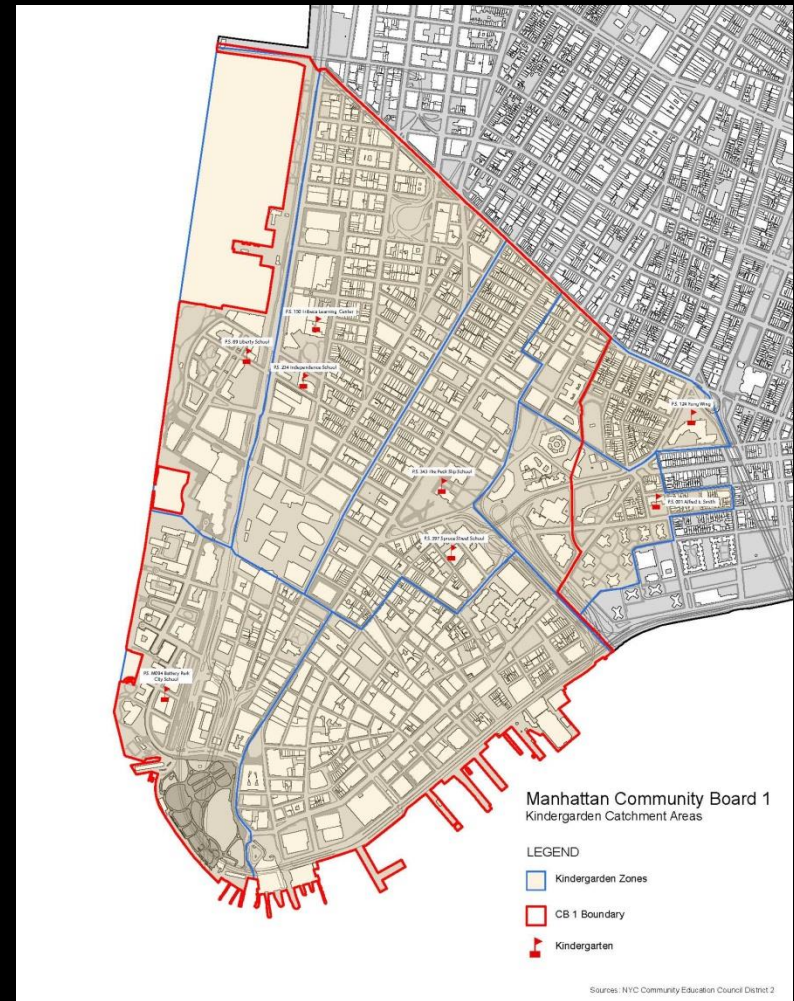
1. School Zone Maps – Report
2. Speaker Silver's School Overcrowding Task Force Meeting – Report
3. Peck Slip School classroom dividers – Report



# Manhattan Community Board 1



CB1 Elementary School Zones



CB1 Kindergarten Zones Converted

Maps prepared by Jeff Sun, CB1 Planning Fellow



# Manhattan Community Board 1 Committee Reports

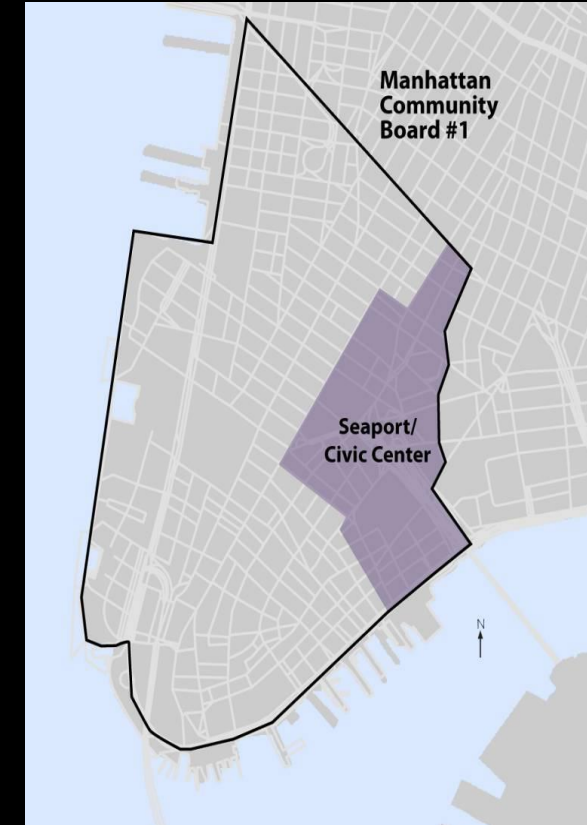
## Battery Park City Committee – N. Segarra

1. Pier A Visitors Information Center – Report
2. BPC Parks Enforcement Patrol – Report
3. Manhattan by Sail – Report
4. Tunnel to Towers Foundation street activity permit application for Vesey Street between West Street and North End Ave.  
Sunday, September 27, 2015 – Report



# Manhattan Community Board 1 Committee Reports

## Seaport/Civic Center Committee - J. Fratta /M. Pasanella



1. Seasonal programming at the South Street Seaport – Report
2. Alternate sites for proposed Seaport development – Resolution



# 2014 HOLIDAY PROGRAM

Seaport  
District  
NYC

# LAYOUT

WINTER PROGRAM // November 2014 - March 2015



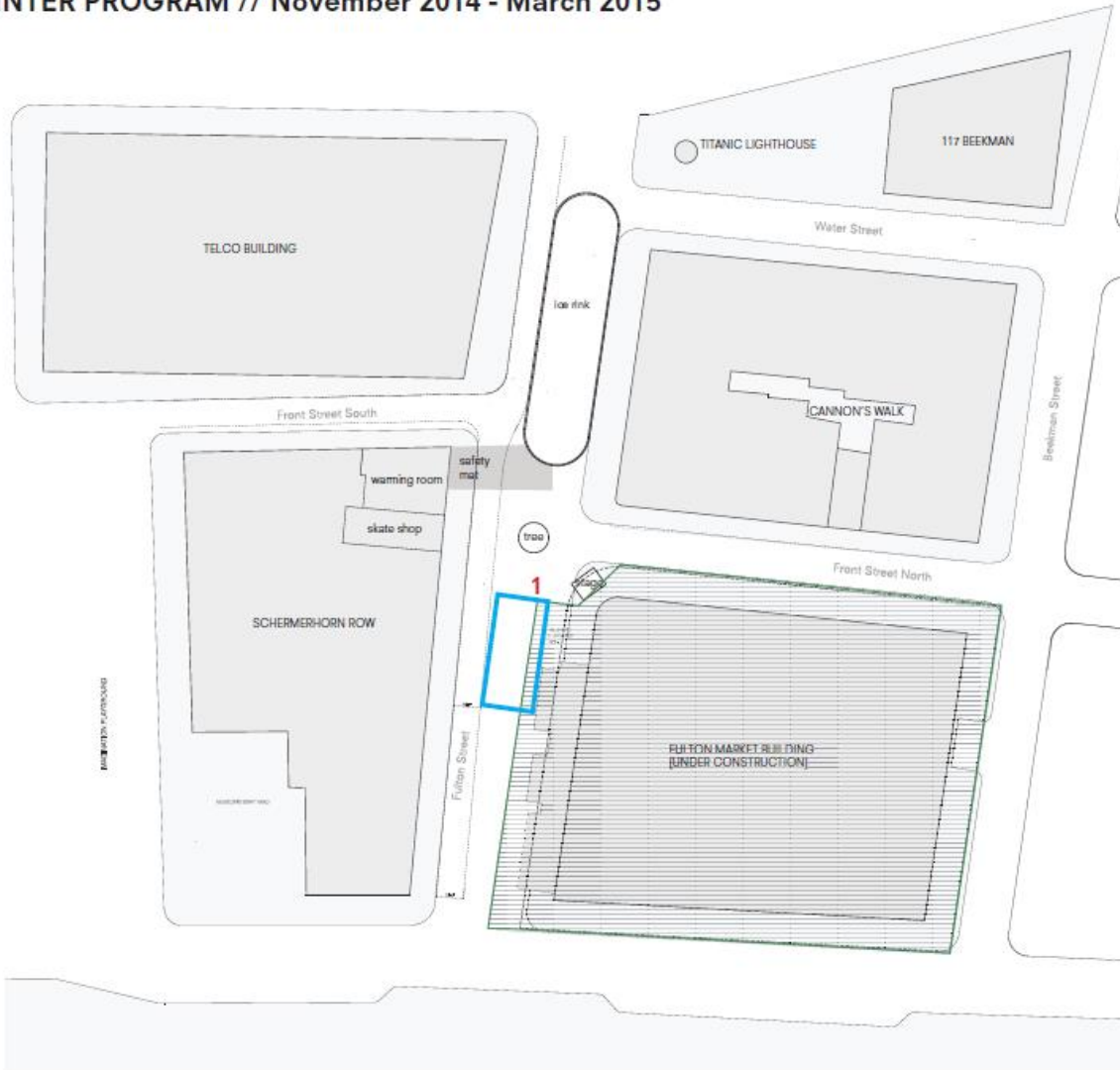
## ICE RINK // NOV - FEB

- Rink sits on mat which lies on top of cobble stones. Zamboni and chiller located behind construction fence of Fulton Market Building and out of public view.



# LAYOUT

WINTER PROGRAM // November 2014 - March 2015



## INFLATABLE CUBE // JAN - MAR

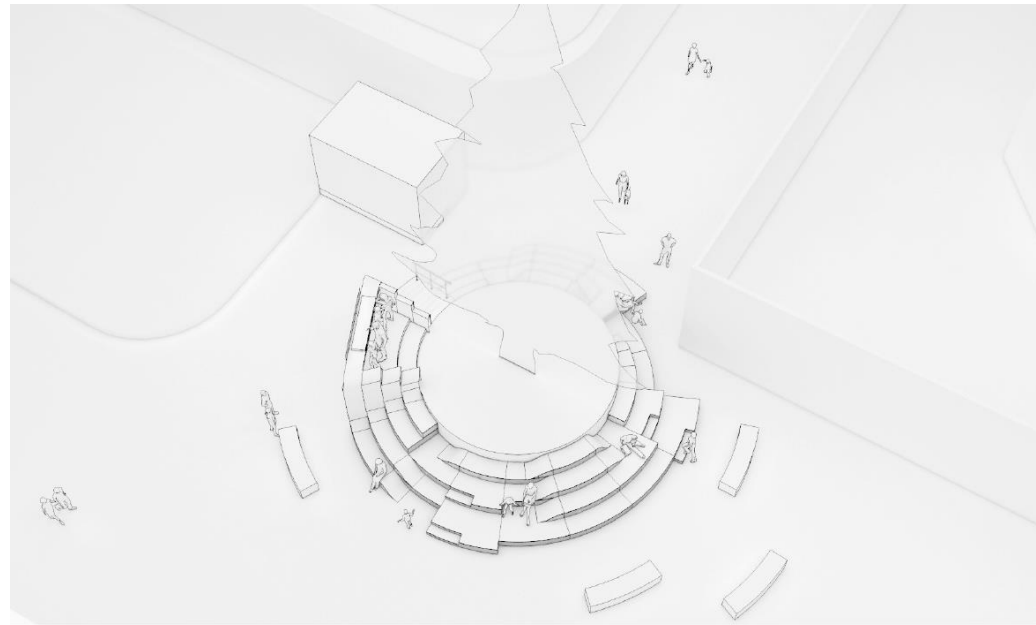
1. Pop-up inflatable 60' x 30' cube on Fulton Street.
  - Cube can be inflated and deflated as needed.
  - Live music and lectures will be held within the cube.
  - See/Change branding to be displayed on the cube.
  - We intend for the cube to glow as shown in the images below.



# TREE INSTALLATION



# TREE PAVILION



# Manhattan Community Board 1

---

## Old Business

No Business conducted

# Manhattan Community Board 1

---

## New Business

1.The Peck Slip School Classroom Space – Resolution



# Manhattan Community Board 1

---

## Adjournment

Thank you and goodnight!