



Manhattan Community Board 1

Full Board Meeting

TUESDAY, JULY 28, 2015

6:00 PM

DC37 - Auditorium
125 Barclay Street

Catherine McVay Hughes, Chairperson

Noah Pfefferblit, District Manager

Lucy Acevedo, Community Coordinator

Tamar Hovsepian, Community Liaison

Diana Switaj, Director of Planning and Land Use

Michael Levine, Planning Consultant

Manhattan Community Board 1

Public Session

Comments by members of the public

(6 PM to 7 PM)

(Please limit to 1-2 minutes per speaker, to allow everyone to voice their opinions)

Guest Speakers:

Henry Garrido, Executive Director – DC 37

Oliver Gray, Associate Director – DC 37

Manhattan Community Board 1 Business Session

- Adoption of June 2015 minutes
- Chairperson's Report – C. McVay Hughes
- District Manager's Report – N. Pfefferblit
- Treasurer's Report – J. Kopel

456 Washington Street: 22 affordable units



Related is very close to beginning marketing for 5 studios, 6 one-bedroom apartments, and 11 two-bedroom apartments all designed to be affordable to households at 60% of the Area Median Income. 50% of the total number of units will have a preference for residents of Manhattan CB1. An additional 5% of units will have a preference for municipal employees, 5% will be set aside for applicants with mobility impairments, and 2% will be set aside for applicants with visual or hearing impairments. The affordable program will be advertised as Bridge Land West LLC. The official 60-day marketing period is slated to begin at the beginning of August. Applicants will be able to apply online at www.nyc.gov/housingconnect

City of Water Day Press Conference



Waterfront Alliance President Lewis, Manhattan Borough President Brewer, Battery Park City Authority, Brookfield Properties, CB1 and others announce 8th FREE City of Water Day and promote waterfront recreation (cardboard racing in North Cove Marina, 07/16/15) photo: ebroadsheet.com

City of Water Day Ribbon Cutting



Organized by Water Alliance joined by Children, President Roland Lewis, US Coast Guard, National Parks, NYC Council Member Kallos, CB1 Chair Catherine McVay Hughes and others (Governors Island, Saturday, 07/16/15); photo from <http://www.downtownmagazinenyc.com/city-of-water-day-2015/>



NYPD Transit District 2 Community Outreach (Fulton Center, 07/15/15). NYPD Three star Chief Joseph Fox, Chief of Transit with CB1 Chair Catherine McVay Hughes

Collect Pond – water finally returns to reflecting pool after a series of mechanical failures; thank you NYC Parks (06/27/16)



Photo from Tribeca Trib

USPS Collection Box - Blue Box Locations in CB1

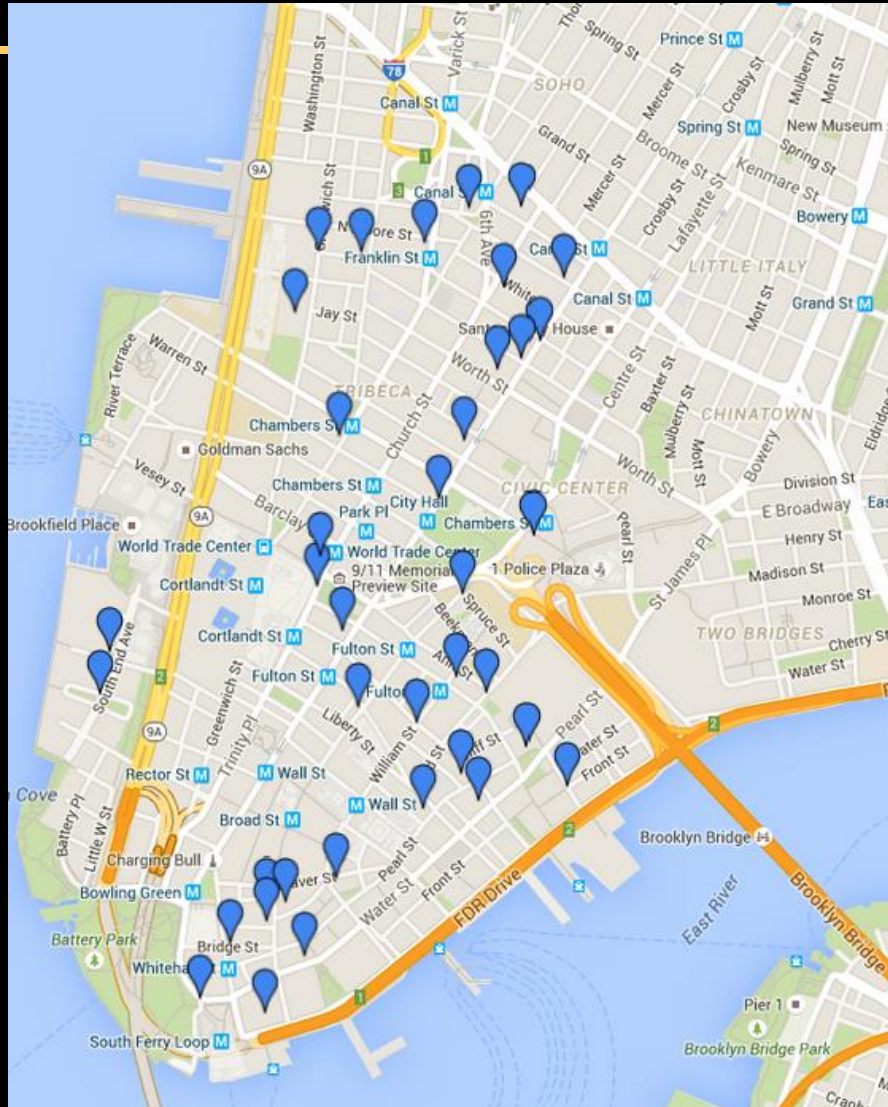
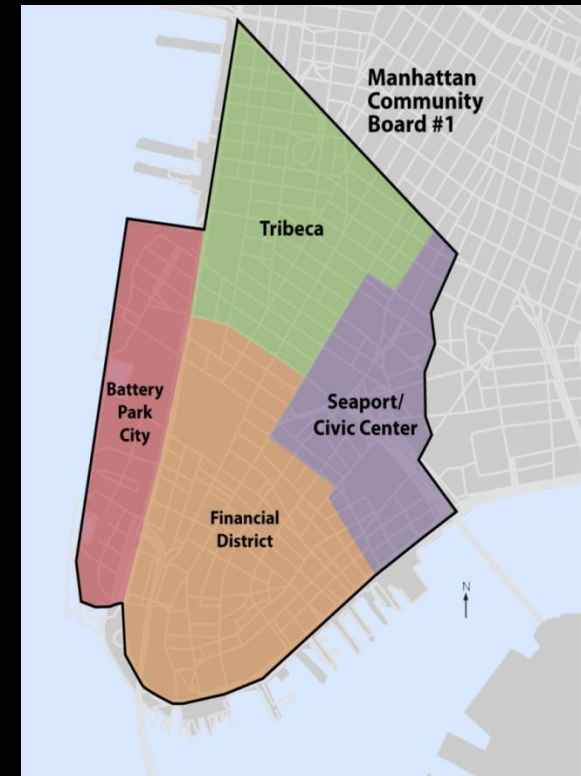


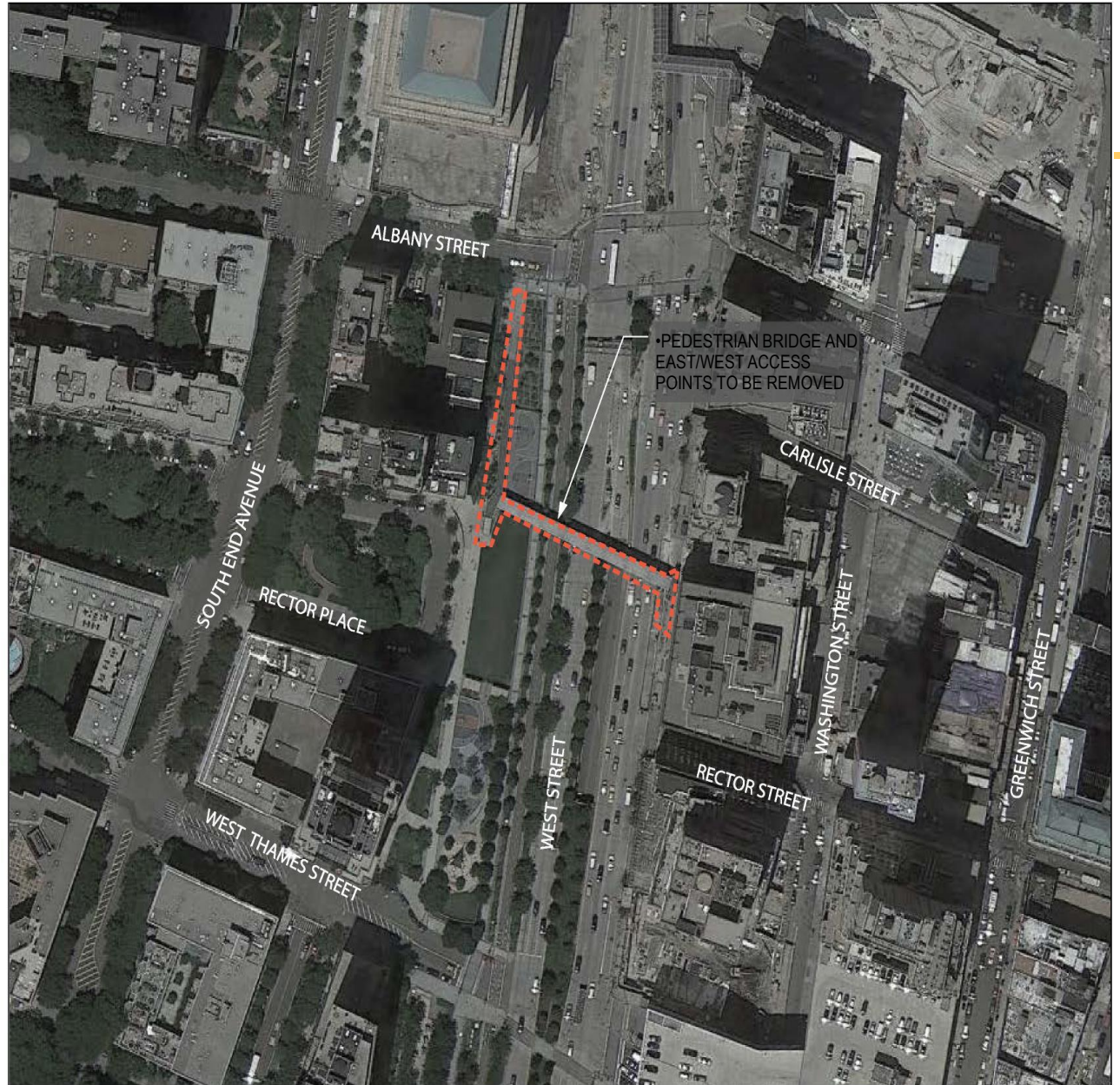
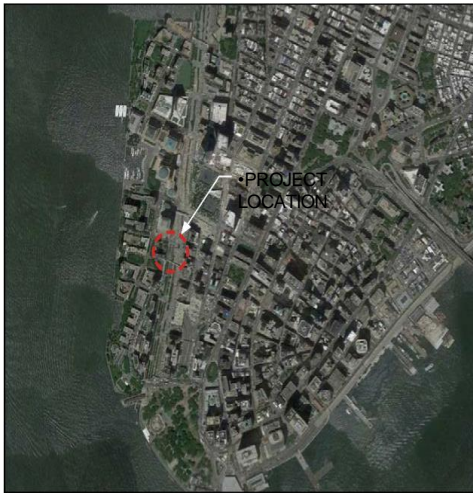
Photo provided by Congressman Nadler's Office taken from USPS website

Manhattan Community Board 1 Committee Reports

Executive Committee – C. Hughes

1. Demolition of Rector Street Bridge & restoration of park to larger footprint, Public Design Commission application – Resolution
2. South Street Seaport Pier 17 – Resolution
3. SeaGlass Carousel – Report
4. Riverkeeper Report and City of Water Day on Saturday, July 18, 2015 – Report
5. Community Needs Assessment Study by Pace University Students – Report
6. Fiscal Year 2017 District Needs Statement – Report

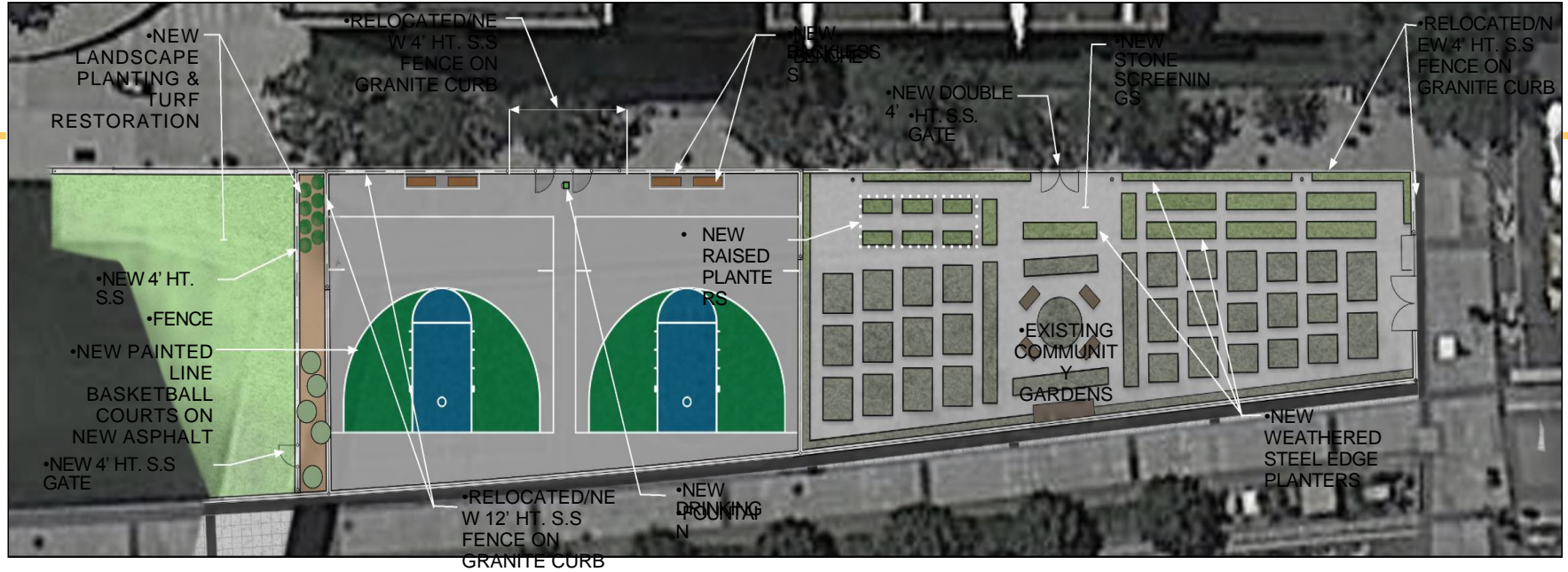




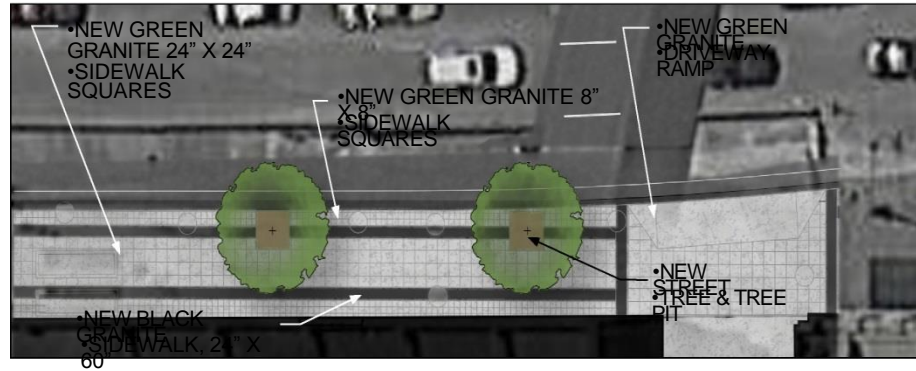
•PROJECT LOCATION

•RECTOR STREET LANDSCAPE RESTORATION

•WEST SIDE RESTORATION



•EAST SIDE RESTORATION



•SCALE: 1"=20'



BLUE PRINCE HOLLY
Ilex x Meserveae 'Blue Prince'



OAKLEAF HYDRANGEA
Oakleaf Hydrangea



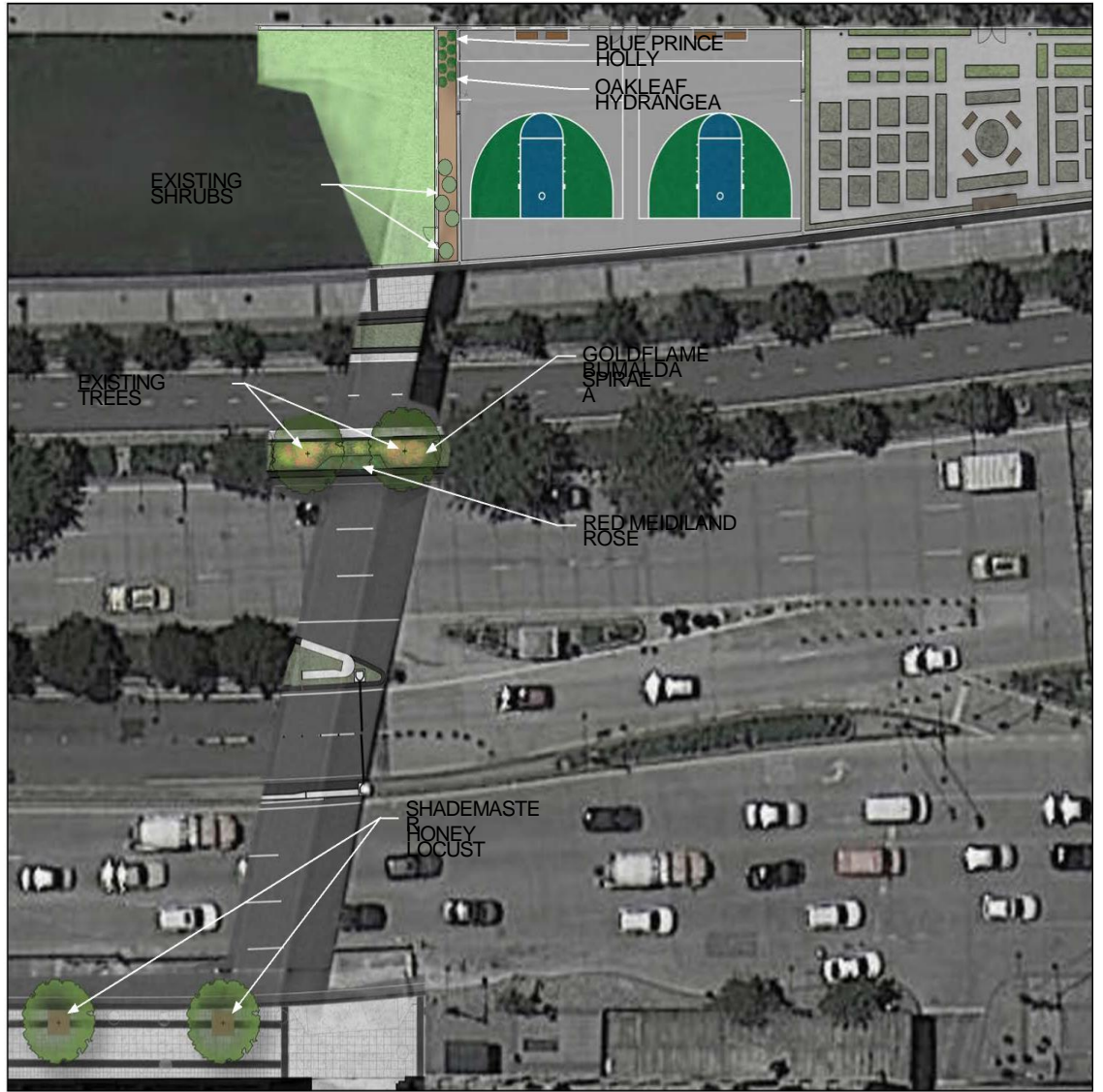
GOLDFLAME BUMALDA SPIRAEA
Spiraea x Bumalda 'Goldflame'



RED MEIDLAND ROSE
Rosa 'Scarlet Meidiland'



SHADEMASTER HONEY LOCUST
Gleditsia Tricanthos 'Shademaster'



SeaGlass Carousel



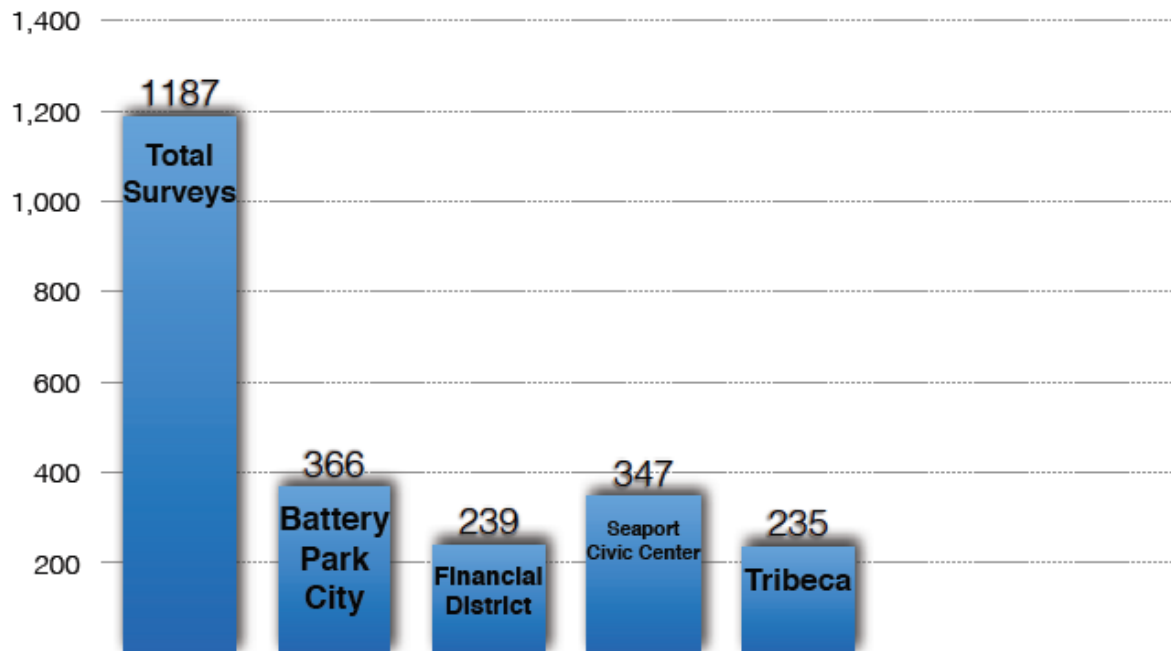


Community Needs Assessment Study by Pace University Students 2014-2015

Manhattan Community District 1: Battery Park City, Financial District, Seaport/Civic Center, Tribeca

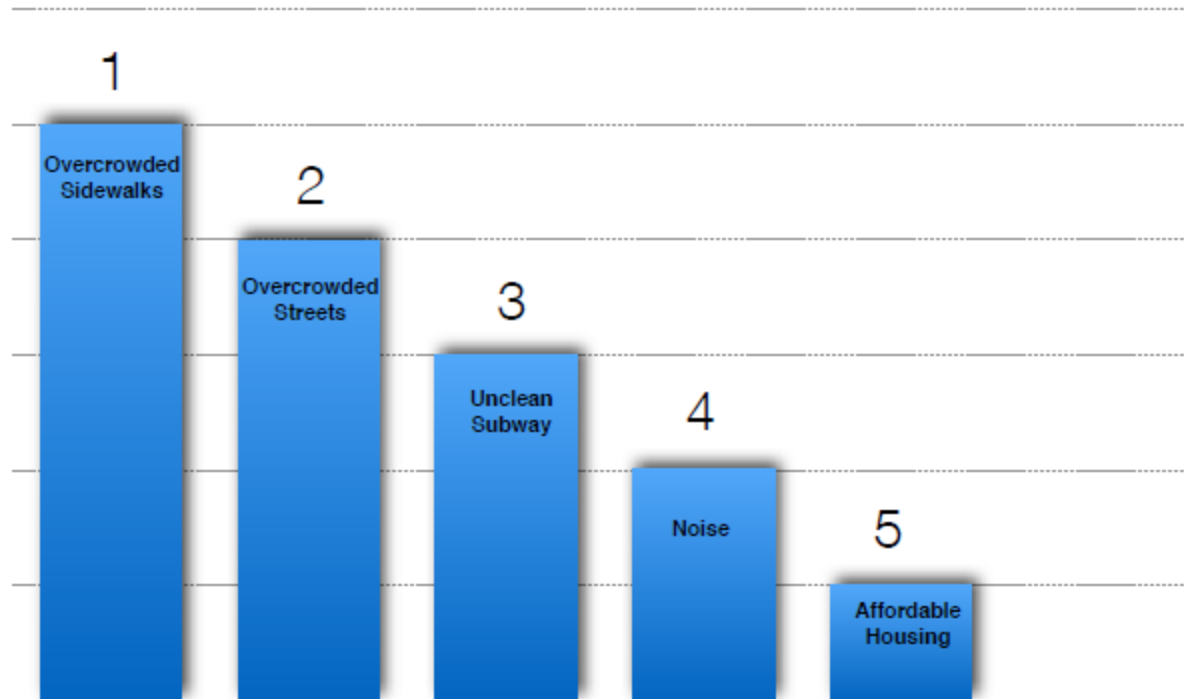
Manhattan Community District 1

Total # of Surveys: 1187
Average Response Rate: ~80%



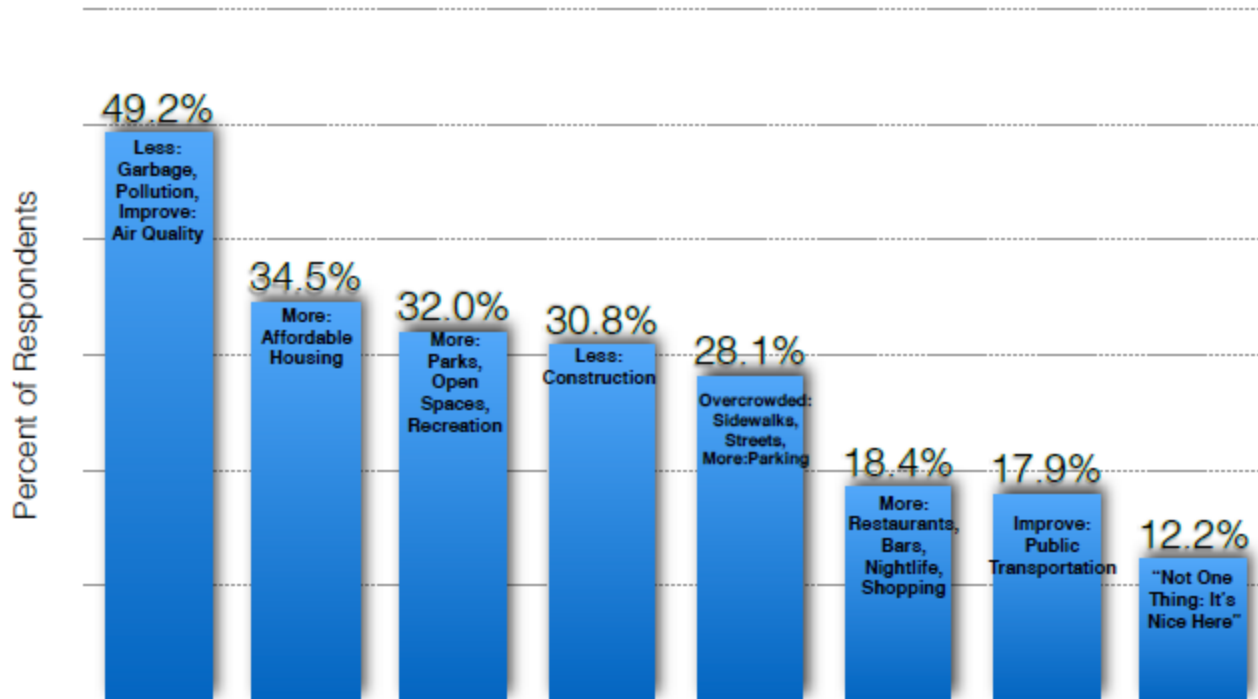
Manhattan Community District 1

Top Five:
Serious Problems



Manhattan Community District 1

Quality Of Life:
One Thing You Would Improve



Fiscal Year 2017 District Needs Statement: Key dates and support

Key Dates

- **June CB Outreach meetings:** Check public meetings calendar
- **Fri June 26:** CBs receive internet link for draft online submission of CDNS/CBBR
- **July:** DCP to host additional info sessions
- **August 10:** Preliminary submission due from online link
- **Mid-Sept to mid-Oct:** Borough Budget Consultations (OMB)
- **Oct 15-30:** CBs work on final submission and budget request prioritization
- **October 30:** Final CDNS/CBBR submission due
- **November:** CD Specific reports ready for DCP use
- **January 2016:**
 - Report summaries available on DCP Community Portal
 - OMB publishes agency responses in Preliminary Budget Register

Support

DCP Planning Coordination

- **Marlon Anderson**, CD Needs Project Coordinator, manders@planning.nyc.gov or (212) 720-3468
- **Email:** CDNEEDS_DL@planning.nyc.gov

OMB Community Board Unit

- **Lester Siegal**, Budget Request Coordinator, (212) 788-5943 or SiegalL@omb.nyc.gov
- **Jay Gottlieb**, OMB Deputy Assistant Director of Financing Policy & Coordination (212) 788-5815 or gottlieb@omb.nyc.gov

Detailed information sources on DCP Community Portal

http://www.nyc.gov/html/dcp/html/neigh_info/nhmap.shtml

CB1's office is moving

Please update your records to reflect the following changes that will take effect on Monday, August 3, 2015:

Manhattan Community Board 1
1 Centre Street, Room 2202 North
New York, NY 10007

Tel: (212) 669-7970

Fax: (212) 669-7899

Website:

<http://www.nyc.gov/html/mancb1/html/home/home.shtml>

Email: Man01@cb.nyc.gov

The CB1 office will be open on Thursday, July 30 and Friday, July 31 but with limited services due to the move. Thank you.



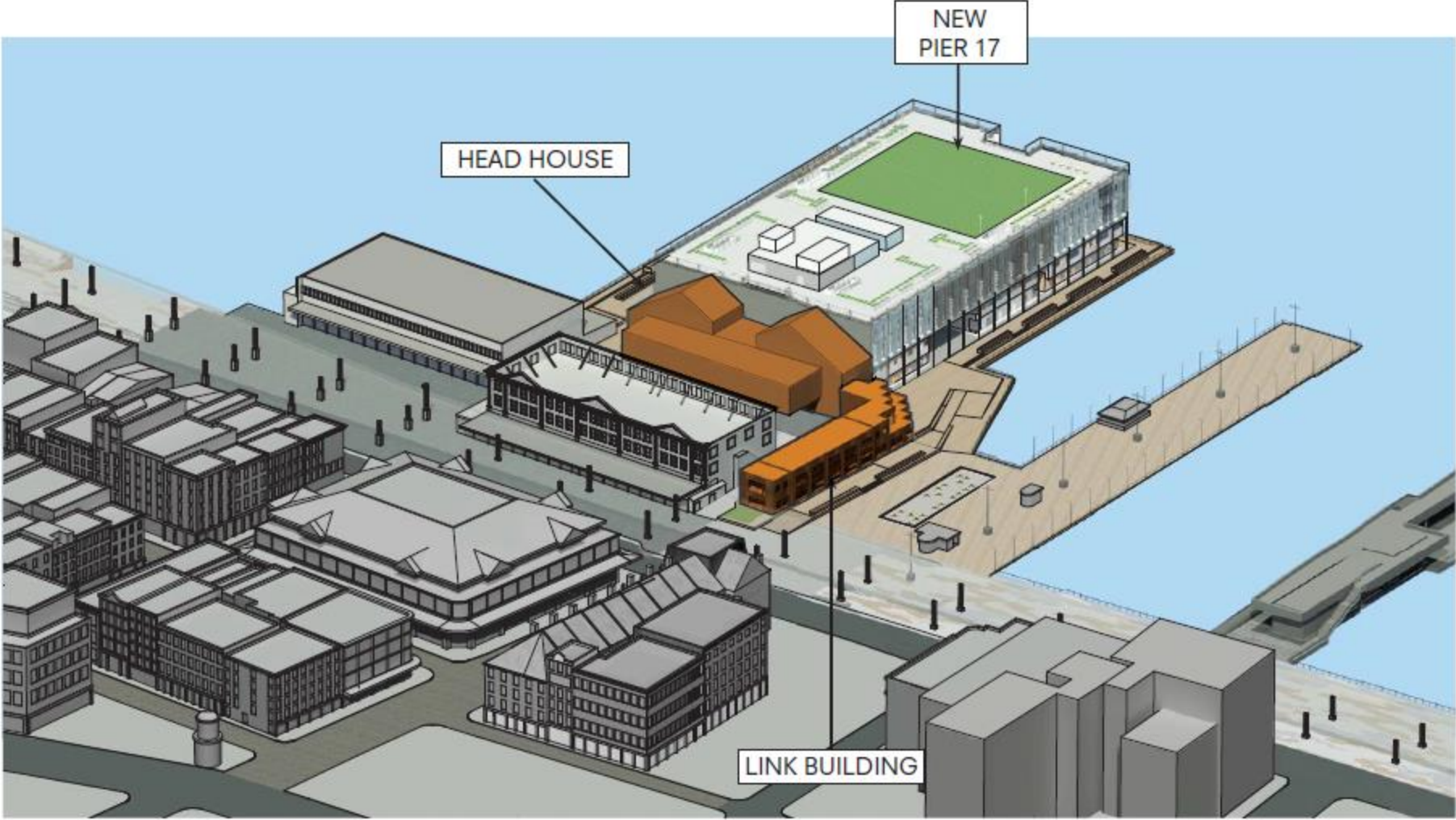
Manhattan Community Board 1 Committee Reports

Special Landmarks – R. Byrom

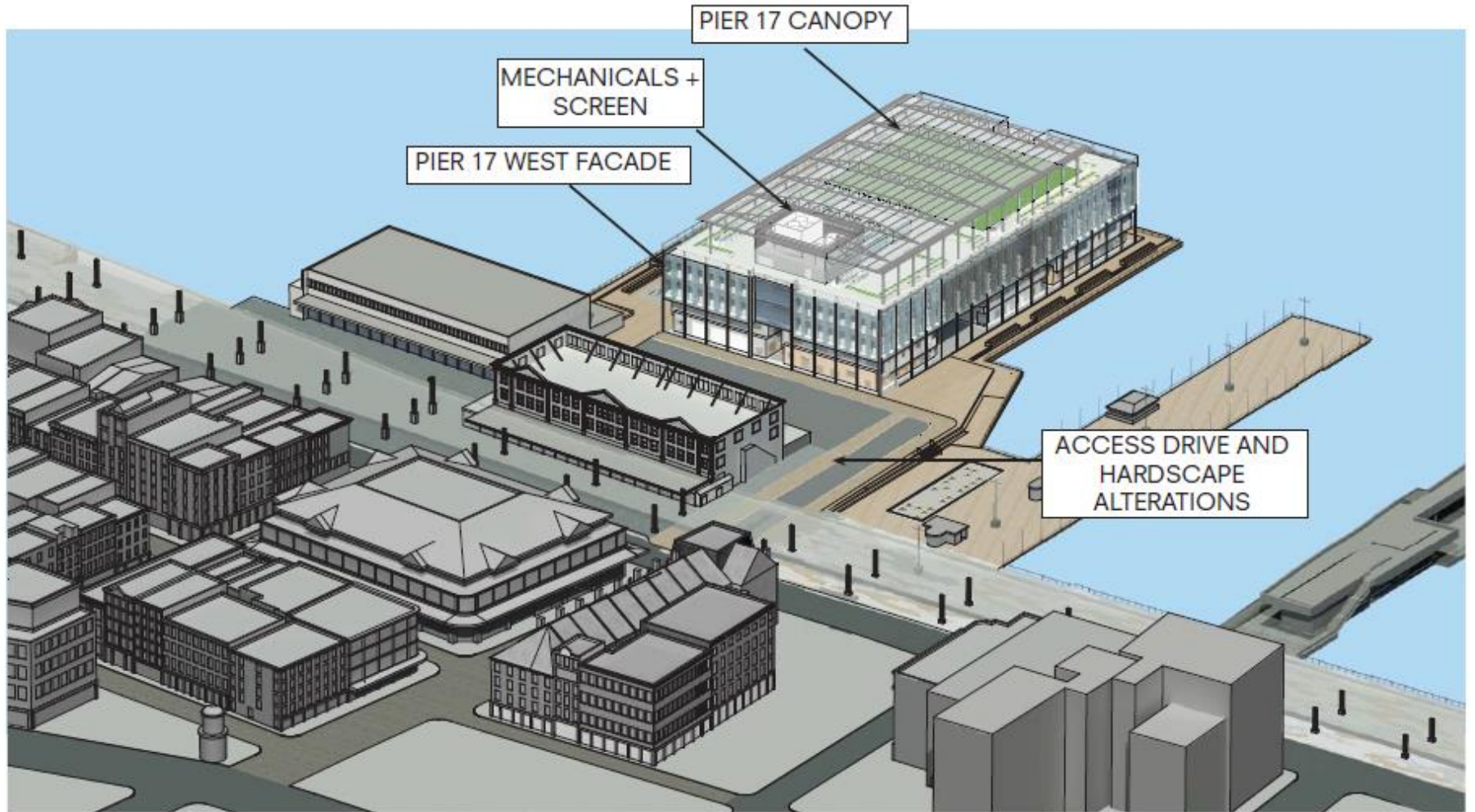
1. South Street Seaport – Howard Hughes Corporation, alterations to: (1) Pier 17 western edge/removal of head-house (2) Pier 17 canopy and mechanical screen (3) Access drive hardscape (4) Demolition of Link Building – Resolution



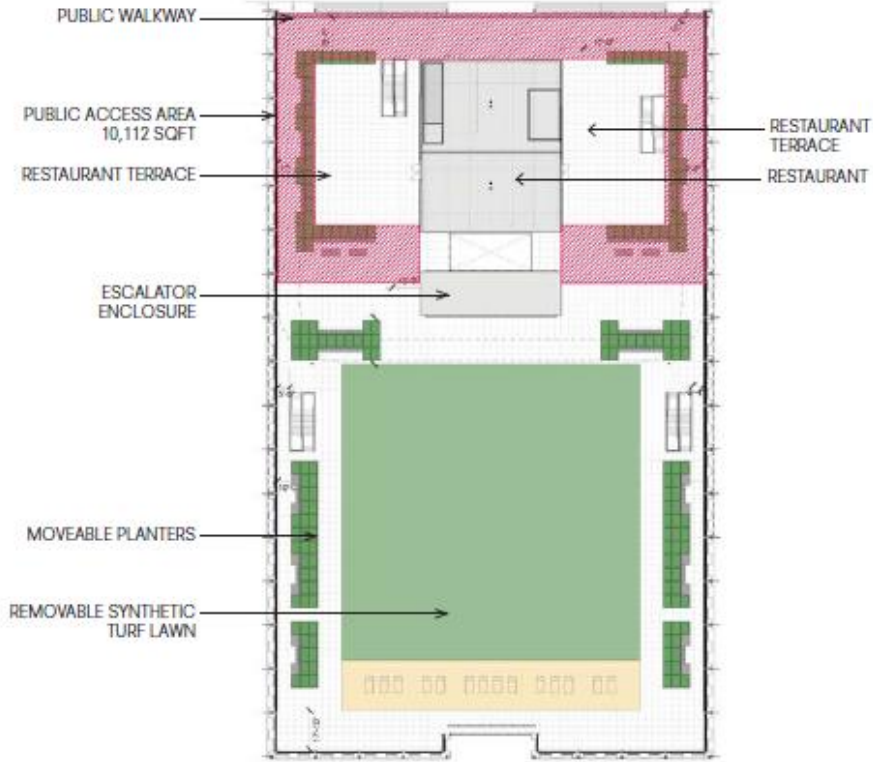
SOUTH STREET SEAPORT // PIER 17 RENOVATION // PROPOSED DEMOLITION OF HEAD HOUSE AND LINK BUILDING



SOUTH STREET SEAPORT // PIER 17 CANOPY, MECHANICALS, + SCREEN



SOUTH STREET SEAPORT // PIER 17 // PROPOSED PIER 17 CANOPY, MECHANICALS, + SCREEN // PLAN



APPROVED ROOF PLAN



PROPOSED ROOF PLAN

SOUTH STREET SEAPORT // 10.15.2013 APPROVED AERIAL VIEW



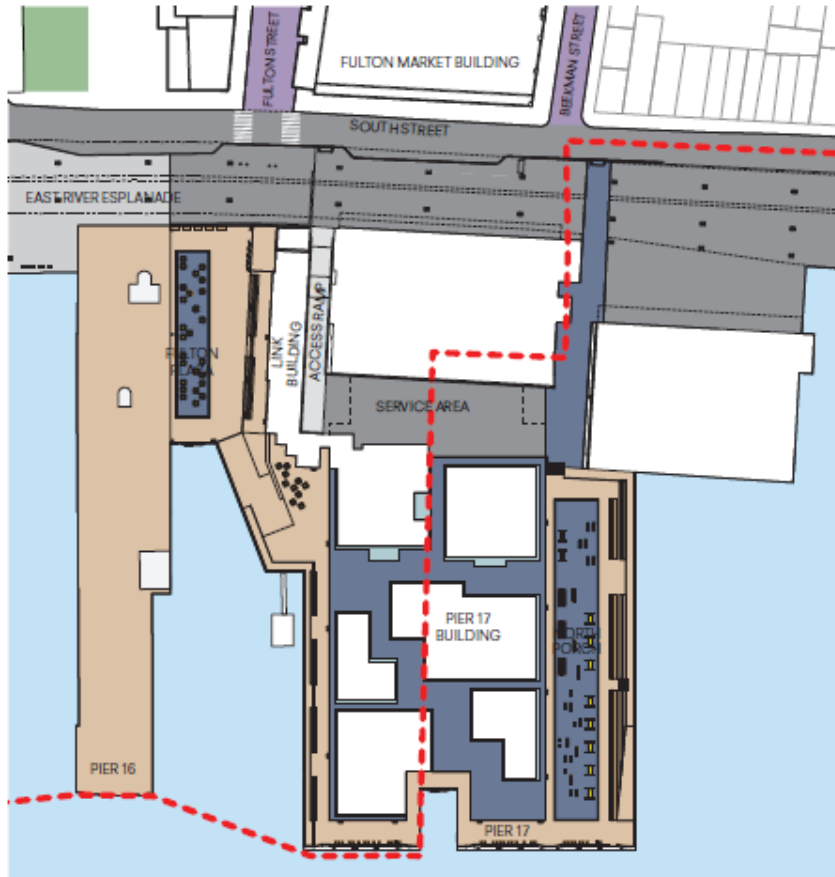
SOUTH STREET SEAPORT // PROPOSED PIER 17 WITH CANOPY, MECHANICALS, + SCREEN // AERIAL VIEW



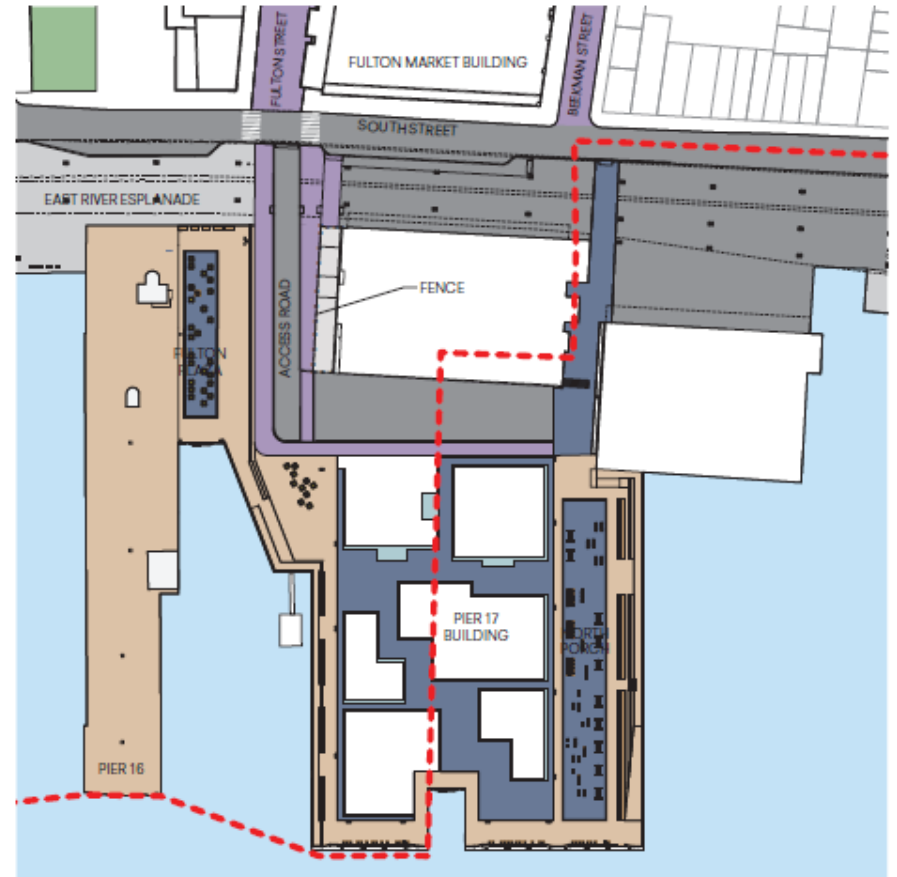
SOUTH STREET SEAPORT // PROPOSED PIER 17 CANOPY, MECHANICALS, + SCREEN



SOUTH STREET SEAPORT // LANDSCAPE // APPROVED + PROPOSED LANDSCAPE MATERIALS



10.15.13 APPROVED SITE PLAN



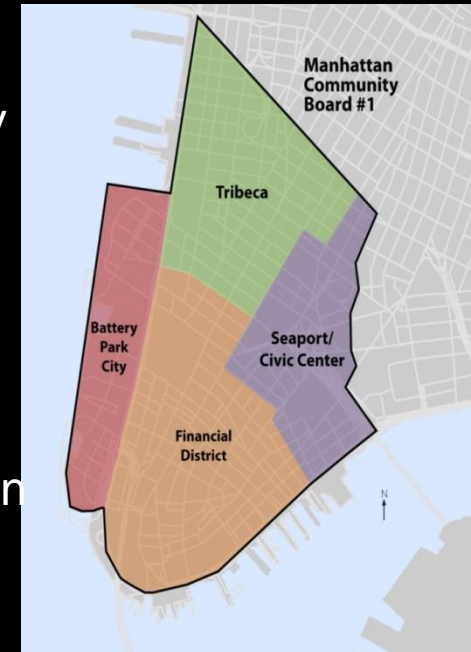
PROPOSED SITE PLAN



Manhattan Community Board 1 Committee Reports

Landmarks – R. Byrom

1. 17 Leonard Street, application for restoration of existing 3-story masonry facade and addition of two-story rooftop addition – Resolution
2. 456 Greenwich Street, application to replace a non-contributing garage building with a new six-story hotel building with rooftop features – Resolution
3. 366 Broadway, application to install ramp and stairs – Resolution
4. 80 White Street, application for entry stair and handicapped lift, window replacement, storefront infill, and rooftop bulkhead – Resolution
5. 130 Duane Street, application for facade alterations, new steel canopies and light fixtures – Resolution
6. 38 Park Row, application for restoration of storefronts – Resolution
7. Follow-up committee discussion on future South Street Seaport plans – Report



17 Leonard Street



17 Leonard Street



456 Greenwich Street



456 Greenwich Street



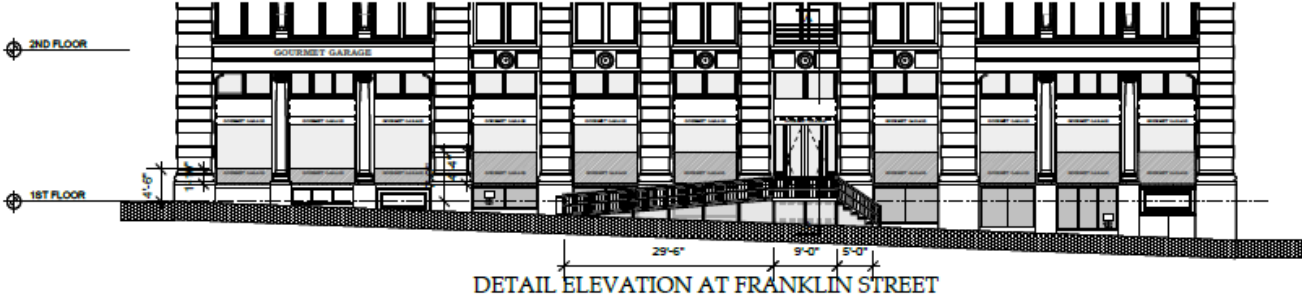
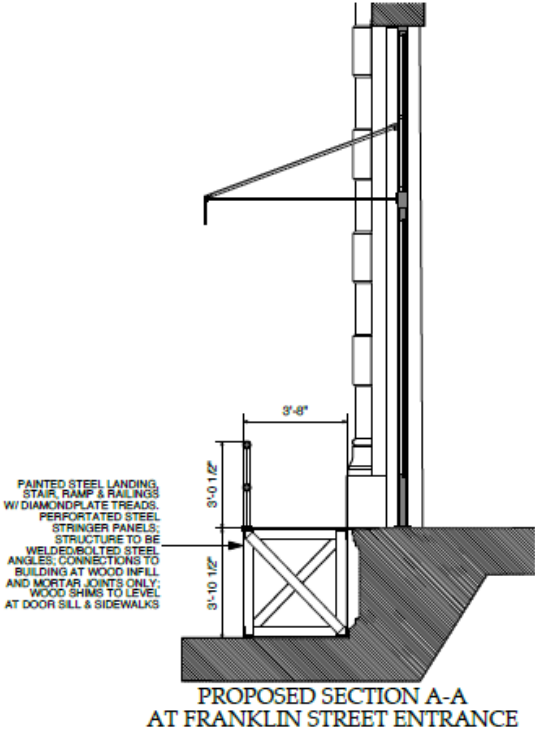
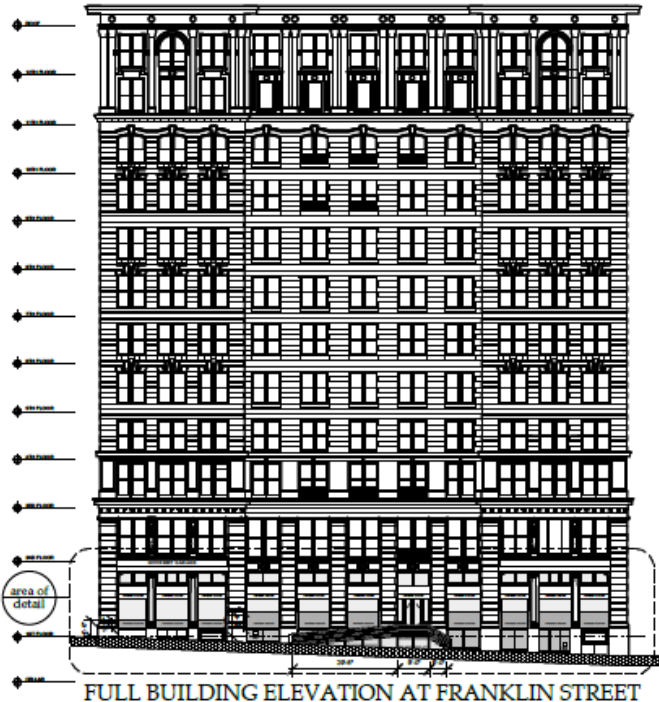
RENDERING
PROPOSED VIEW FROM SE CORNER OF DESBROSSES AND GREENWICH STREETS

366 Broadway



DETAIL AT STREET LEVEL

366 Broadway



Richard H. Lewis Architect
 444 Central Park West
 New York, New York

PROPOSED CONDITIONS

Gourmet Garage
 366 Broadway
 Tribeca East Historic District

130 Duane Street



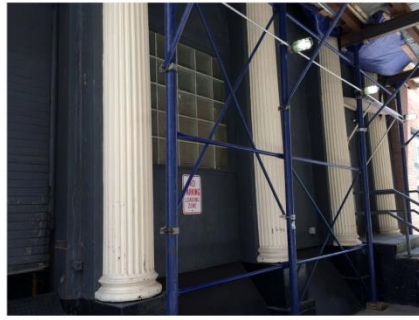
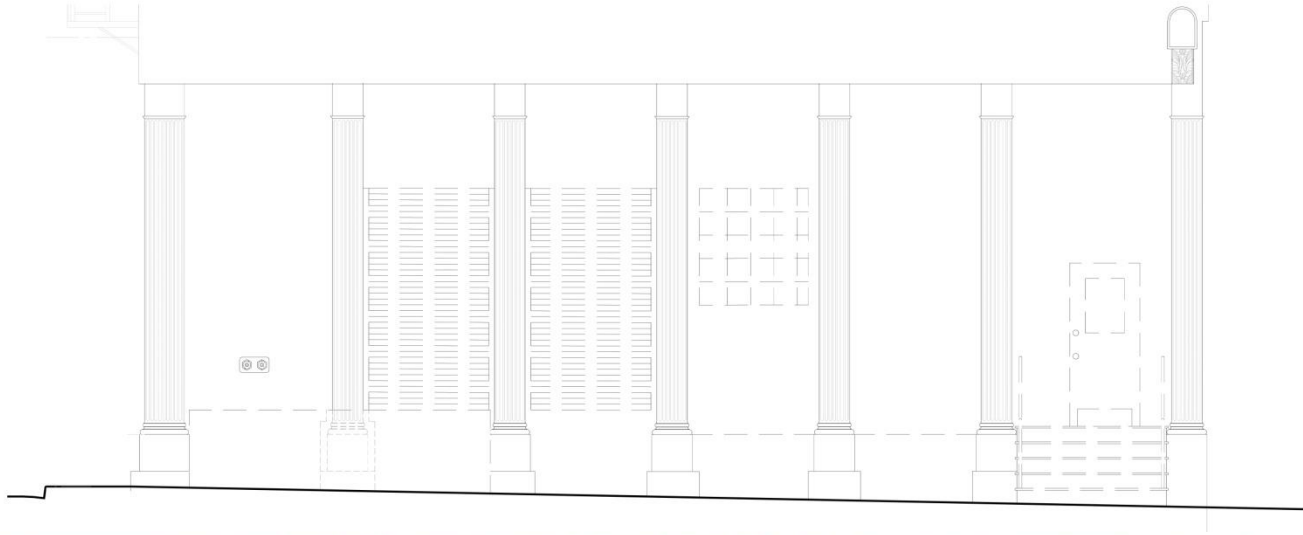
130 Duane Street



80 White Street



80 White Street



38 Park Row

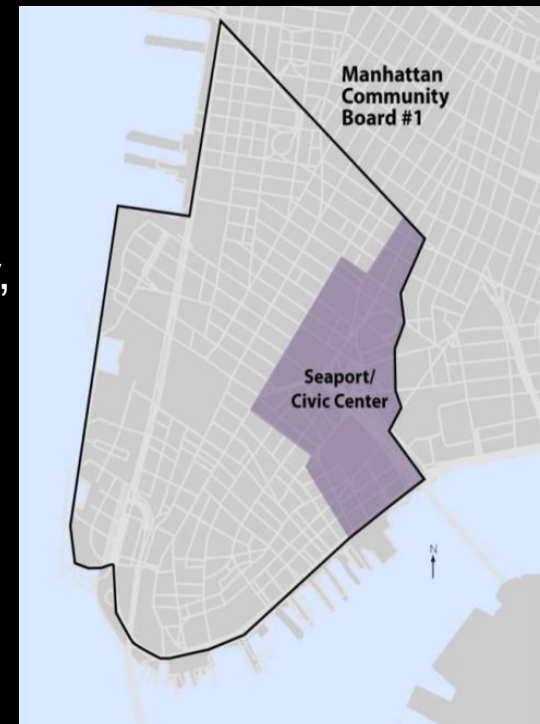


Manhattan Community Board 1

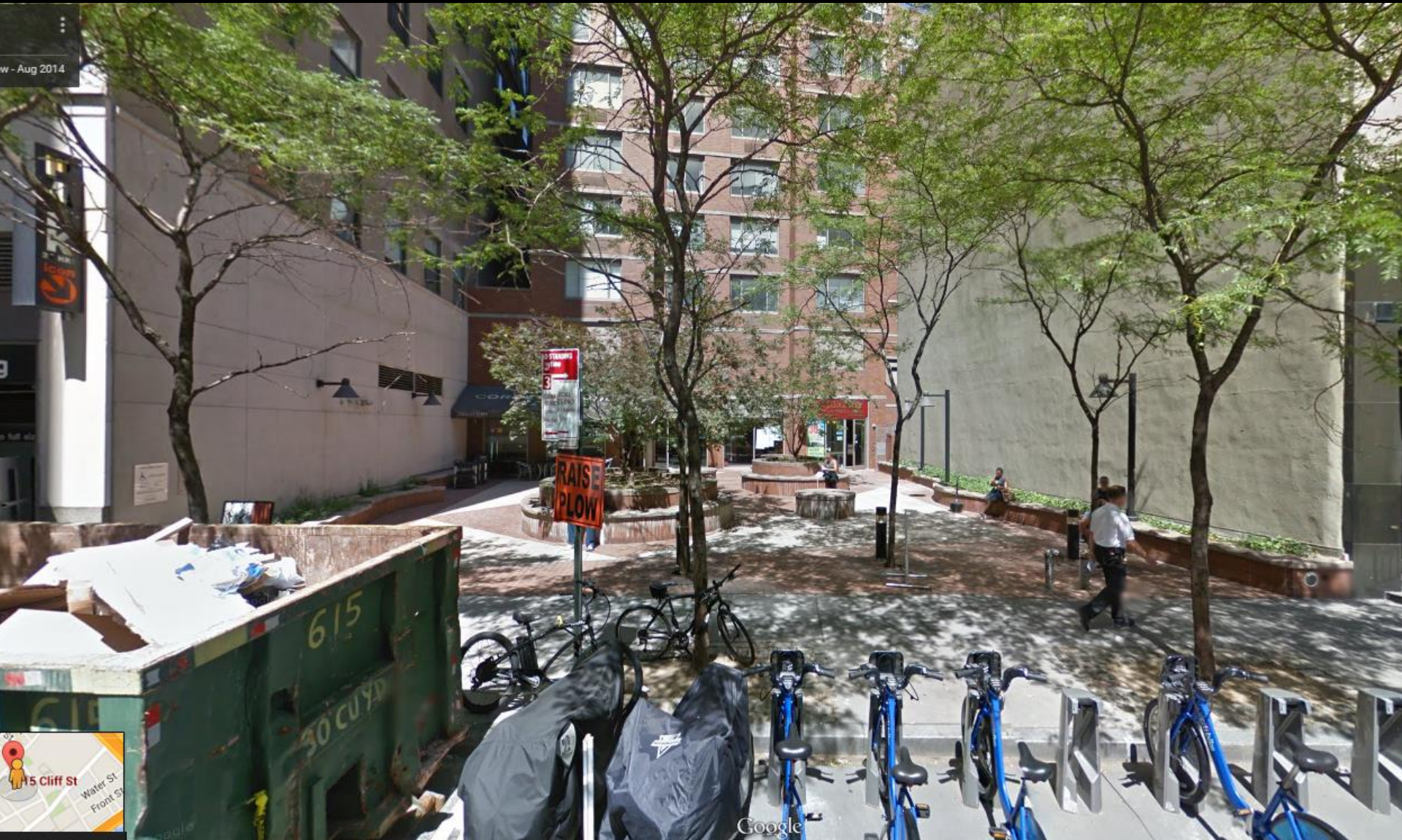
Committee Reports

Seaport/Civic Center – M. Pasanella

1. 15 Cliff Street, public plaza certification – Resolution
2. Taste of the Seaport street activity permit application for Front Street between Beekman Street and Peck Slip, Friday, October 17, 2015, 9:00am – 5:00pm – Resolution
3. 5 Beekman Street, application for restaurant liquor license for Slip Anchor LLC – Resolution
4. 18 Fulton street, application for alteration of a restaurant liquor license for Superspace LLC – Resolution
5. Peck Slip Park, Collect Pond Park and Imagination Playground – Report
6. New Market & Tin Buildings – Report
7. South Street South Reconstruction Project – Report
8. 5 Beekman Street Development – Report



w - Aug 2014



15 Cliff Street
Current Plaza
Google Maps



Wood Benches



Table and Chairs



Trash Receptacle



NYC Bicycle Rack



LED Light Fixture

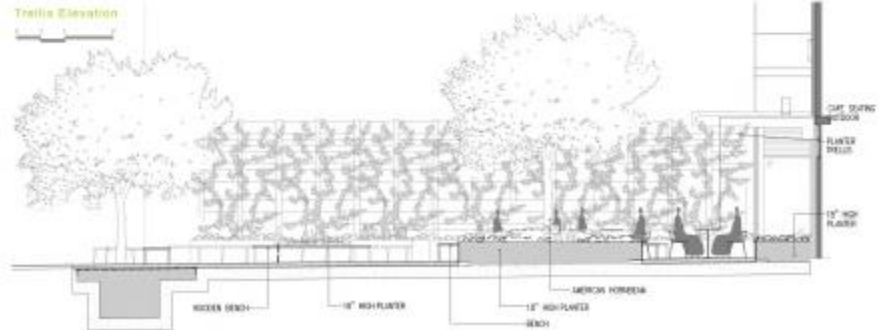


Pole Top Light Fixture



LED Up-Light

Trails Elevation





West Apron

Transition Platforms

Area where structure has failed

Tin Building
Cooler Section

New Market Building
Cooler Section

Cooler Section:
No loading. Failure is highly likely

Cooler Section:
No loading. Primary focus of demolition / structure is failing

New Market Building:
Requires environmental testing and remediation.

Next Steps / Anticipated Schedule

Late July 2015 – Award contract for demolition of cooler areas

August 2015 – Permits in place and work begins

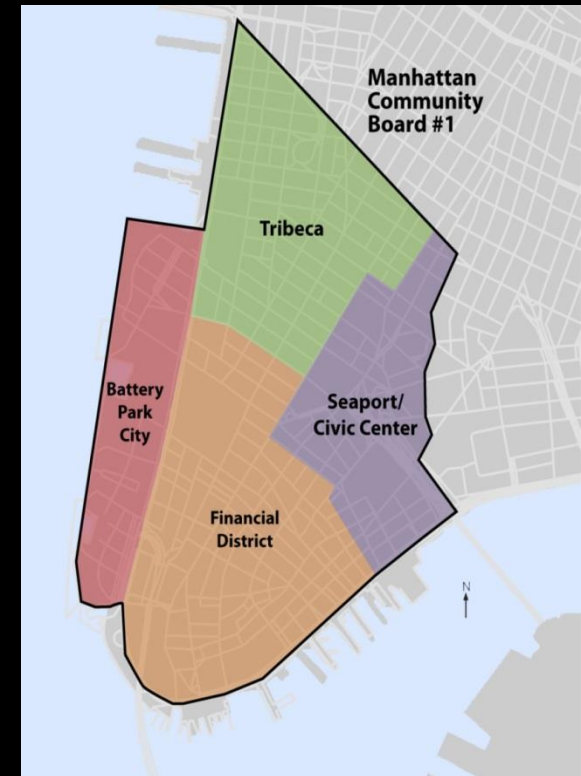
Late September 2015 – Work completion

October 2015 – Further evaluation of remaining structures

Manhattan Community Board 1 Committee Reports

Planning Committee - M. Connolly

1. Make Way for Lower Manhattan Plan – Resolution
2. Lower Manhattan Resiliency – Report
3. World Trade Center – Report
4. Silverstein Properties – Report
5. City-wide Ferry Service – Report



MAKE WAY

for

LOWER MANHATTAN

July 13, 2015

Sponsored by



BUROHAPPOLD
ENGINEERING

Sam
Schwartz
Engineering

WXY

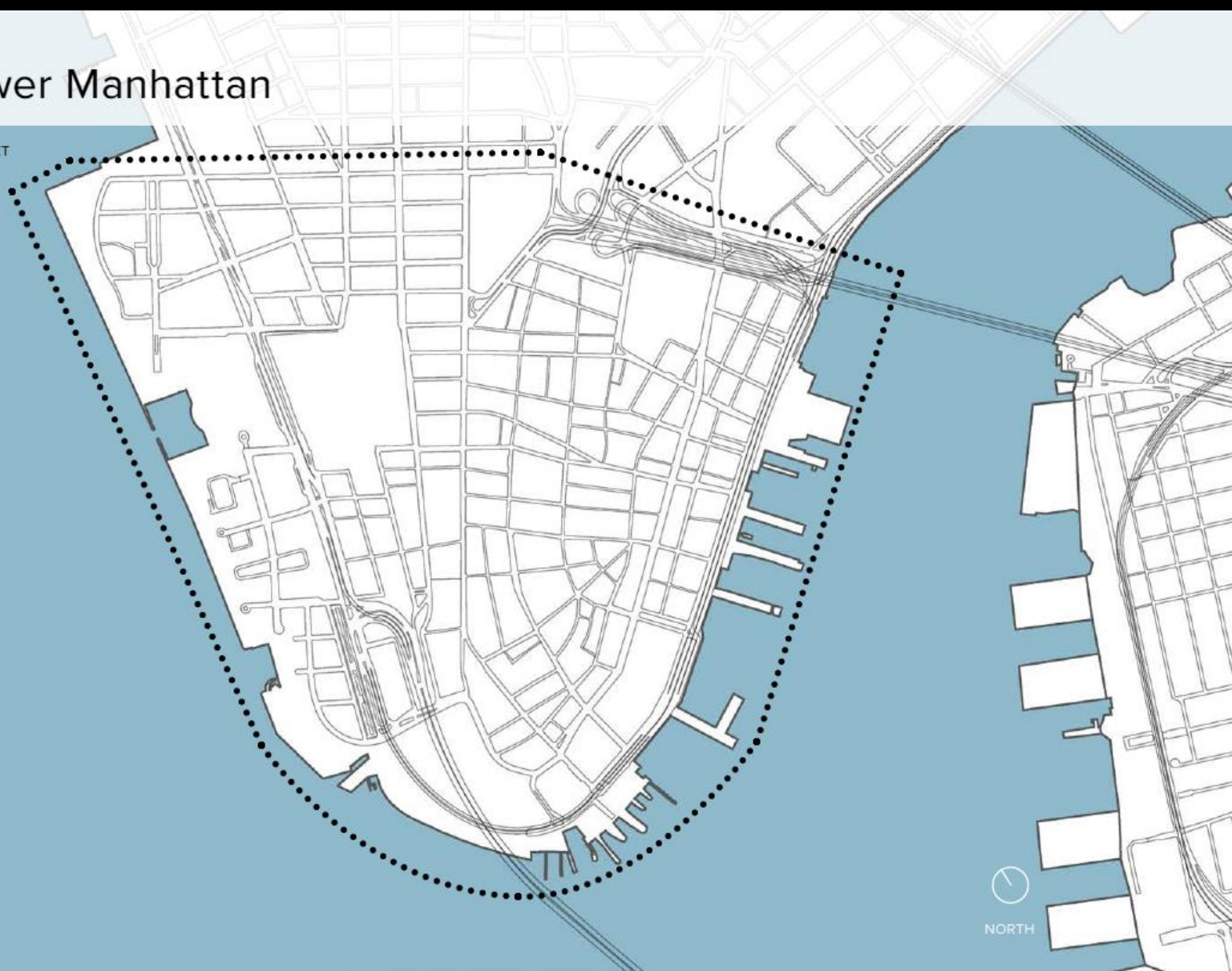
appleseed 

DVS
Security Consulting & Engineering

RESGroup
REAL ESTATE SOLUTIONS

Defining Lower Manhattan

AREA SOUTH OF CHAMBERS STREET
3/4 SQUARE MILES



NORTH

Today, Lower Manhattan is a unique place



“DYNAMIC”

“HISTORIC”

“ADAPTABLE”

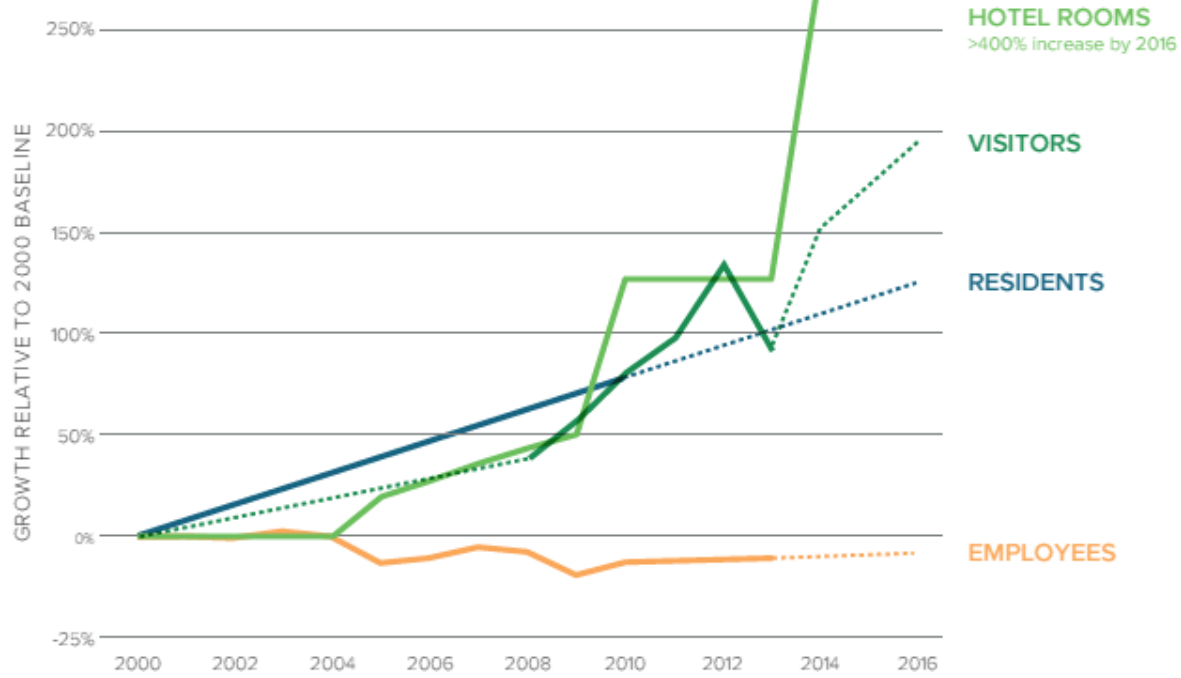
“UNIQUE”

“DIVERSE”

“COMPLEX”

“RESILIENT”

Growth: People



2000
325,000 WORKERS
34,420 RESIDENTS
~6.5 MILLION VISITORS*
Today
309,978 WORKERS
70,000 RESIDENTS
13 MILLION VISITORS*
*ANNUAL VISITORS RECORDED FROM 2008 TO PRESENT

SOURCE: COMMUNITY BOARD 1, DEPARTMENT OF CITY PLANNING, DOWNTOWN ALLIANCE

Key Principles



Facilitating vehicular movement



Providing room for people



Connecting the dots



Enhancing the tourism experience

Next steps

Identify funding for next phase of planning

Investigate applicable “smart city” components:

- waste management
- shared streets
- security technologies
- tourist corridors
- resiliency interventions

Develop proposal for “special mobility district” as appropriate

- technical specifications
- phasing plan

Identify beta testing area/set of projects to begin implementation

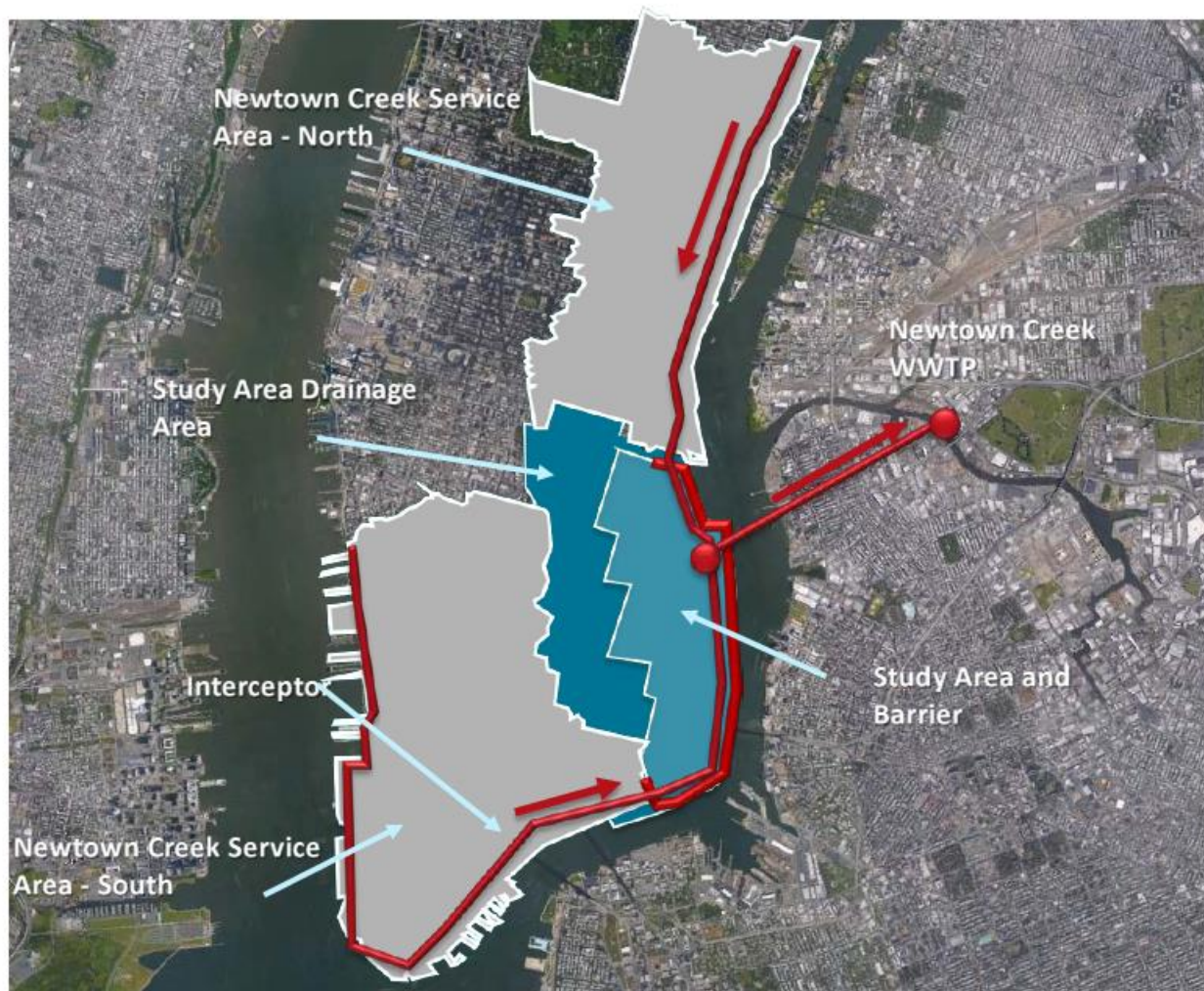
#ONENYC



Manhattan Community Board One
July 13, 2015

Lower Manhattan Coastal Defense

...Lower Manhattan is a critical component of this work.



Where We Are

- City and State dedicated \$6.75m in advanced planning funds for area south of Montgomery
- City has committed 8M in capital funding for Phase 1 Battery Park implementation
- EDC developing scope of work to procure a team for analysis and planning work
- Extensive inter-agency coordination is taking place

What's Next

- Identify design/construction \$\$
- Select and announce projects
- **Lower Manhattan will not be left out**

Draft RFP Details

We expect to release the RFP this summer.



Footprint

- Montgomery St south around the Battery and up the west side

Key Factors

- Interior drainage infrastructure
- Federal Highway Administration work on tunnel and underpass

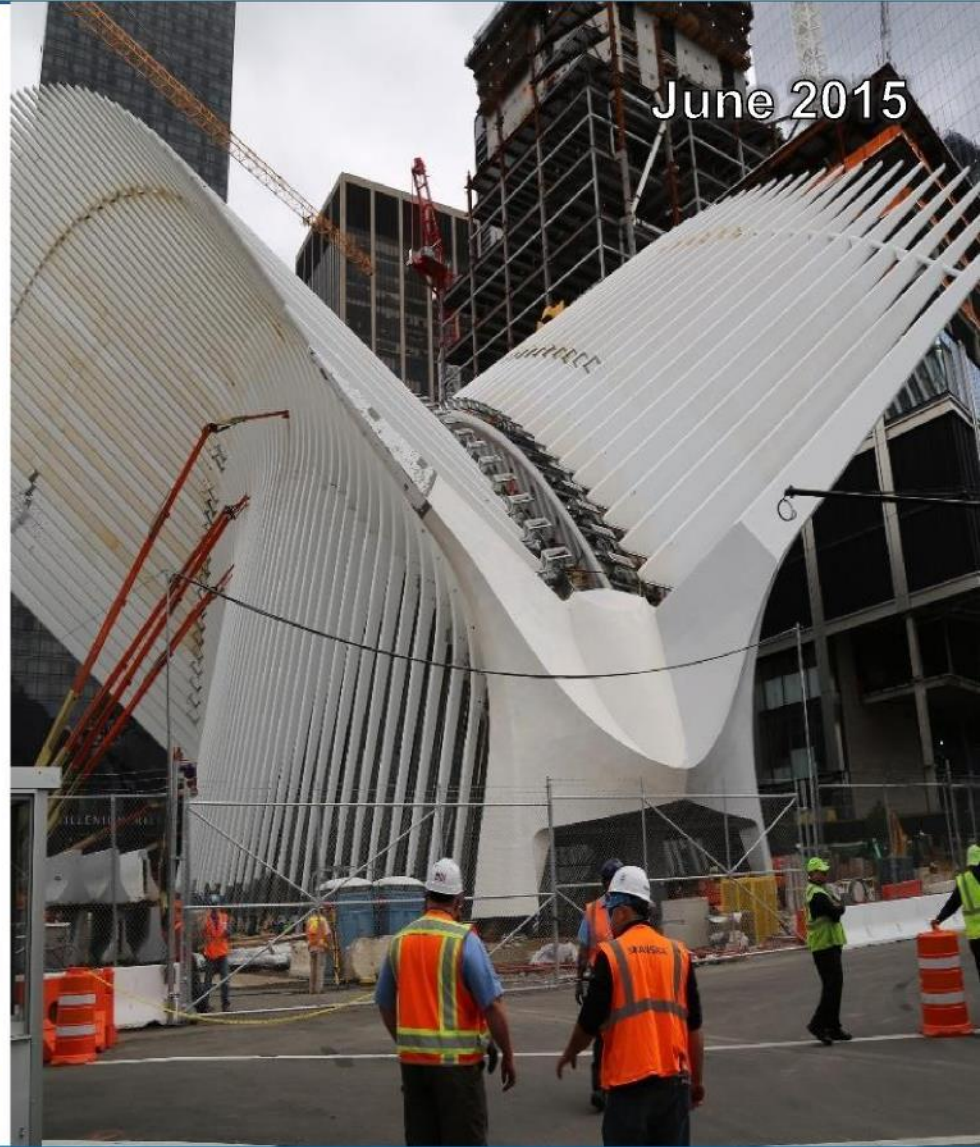
The Port Authority of NY & NJ

World Trade Center Progress

Update to Community Board 1

July 13, 2015

Transportation Hub – Oculus



North Greenwich Pedestrian Passageway



June 2015

Vesey Street

Construction Zone

Construction Zone

Fulton Street

West Street

Liberty Street

Greenwich Street

North Greenwich Pedestrian Passageway Fulton Street

June 2015



4k,
I
14 I4 4Nic,
1

Liberty Park – Construction Progress

June 2015



WTC Construction Progress

June 2015





CITYWIDE FERRY SERVICE

Manhattan CB 1

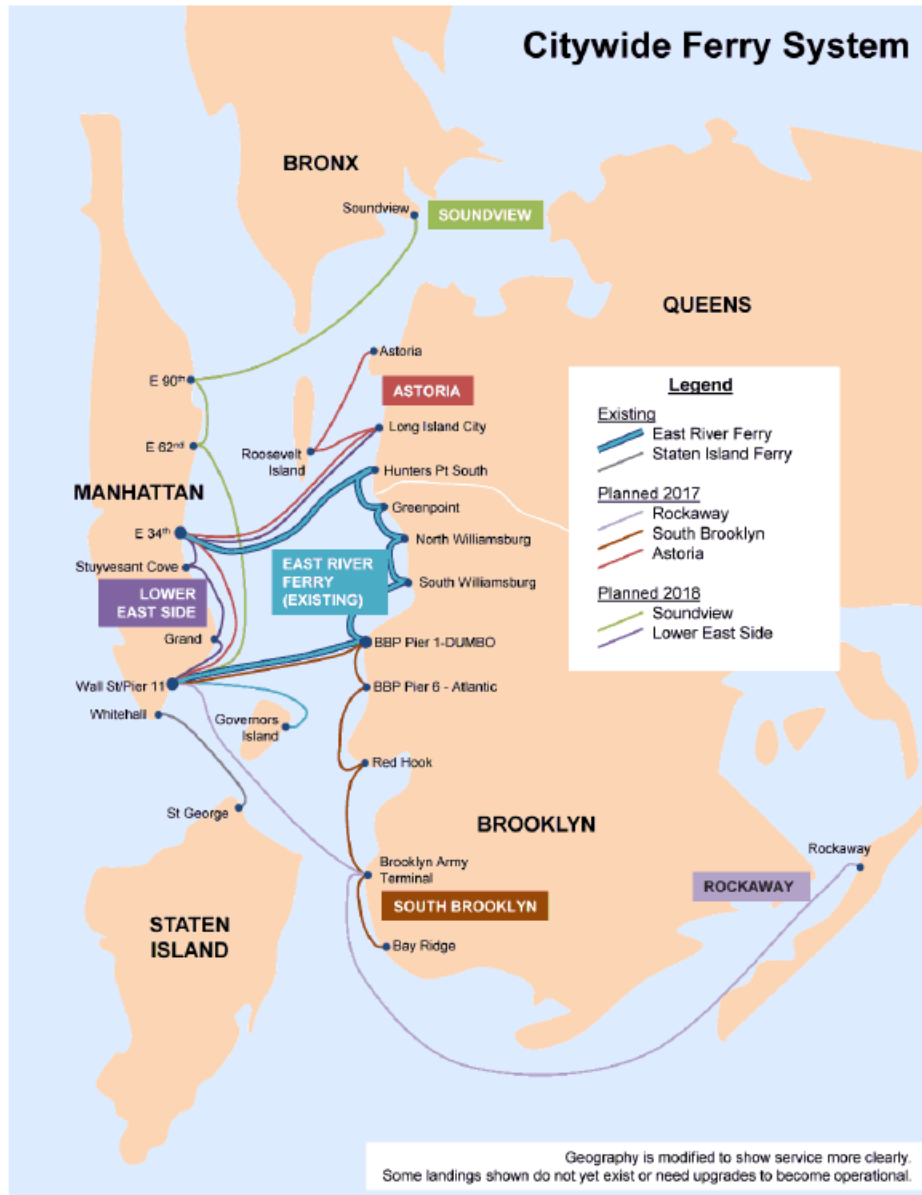


July 2015

Project Goals

- 1. Create a SAFE ferry system**
- 2. Launch three routes by 2017**
(Rockaway, Astoria, and South Brooklyn)
- 3. Launch remaining two routes by 2018**
(Lower East Side, Soundview)
- 4. Ensure continuity of the East River Ferry service**
- 5. Create a unified system focused on customer experience**

Proposed Citywide Ferry Network



Next Steps

- **Community outreach: Summer 2015 (ongoing)**
 - **Environmental review: Fall 2015**
 - **Service operator selection: Winter 2015**
 - **Permitting: Winter 2015/16**
 - **Landing design and construction: Beginning 2016**
-
- **Contact Us: citywideferry@edc.nyc**

Manhattan Community Board 1

Committee Reports

Tribeca – A. Blank

1. Proposed public bike corral at 181 Duane Street – Resolution
2. 221 West Broadway, application for sidewalk cafe for North of Houston LLC d/b/a White Street – Resolution
3. 75 Worth Street, application for tavern liquor license for RBC Bar Inc. – Resolution
4. 41 Murray Street, application for restaurant liquor license for Rosa Mexicano Murray LLC – Resolution
5. 385 Greenwich Street aka North Moore Street, application for restaurant liquor license for Aemal LLC d/b/a Belzer – Resolution
6. Pier 25, application for alteration of liquor license for Manhattan Yacht Club Inc. to change location for pick-up of passengers from North Cove to Pier 25 – Report
7. Temporary Public Plaza on West Broadway between Franklin and Leonard Streets – Report
8. Borough of Manhattan Community College – Report
9. JCP sidewalk Sukkah street activity permit application for Duane Street between Church Street and West Broadway, September 27, 2015 8 a.m. – October 4, 2015, 6 pm – Report
10. Draft Tribeca Committee Liquor License Application Guideline revisions – Report
11. Tribeca Committee meeting procedures – Report





C5-C8 Commercial Districts: Floor Area Ratios				
	Commercial FAR	Residential FAR²	Community¹ Facility FAR	Residential District Equivalent
C5-1	4.0	10.0	10.0 ⁶	R10
C5-1A	4.0	10.0	10.0	R10A
C5-2	10.0 ⁶	10.0	10.0 ⁶	R10
C5-2A	10.0	10.0	10.0	R10A
C5-3	15.0 ⁶	10.0	15.0 ⁶	R10
C5-4	10.0 ⁶	10.0	10.0 ⁶	R10
C5-5	15.0 ⁶	10.0	15.0 ⁶	R10
C6-1	6.0 ⁶	0.87-3.44 ² (range)	6.5 ⁶	R7
C6-1A	6.0	0.78-2.43 ⁴ (range)	6.0 ⁶	R6
C6-2	6.0 ⁶	0.94-6.02 ¹ (range)	6.5 ⁶	R8
C6-2A	6.0	6.02	6.5	R8A
C6-3	6.0 ⁶	0.99-7.52 (range)	10.0 ⁶	R9
C6-3A	6.0	7.52	7.5	R9A
C6-3D	9.0	9.0	9.0	R9D
C6-3X	6.0	9.0	9.0	R9X
C6-4	10.0 ⁶	10.0 ⁶	10.0	R10
C6-4A	10.0	10.0	10.0	R10A
C6-4X	10.0	10.0	10.0	R10X
C6-5	10.0 ⁶	10.0 ⁶	10.0	R10
C6-6	15.0 ⁶	10.0 ⁶	15.0	R10
C6-7	15.0 ⁶	10.0 ⁶	15.0	R10
C6-8	10.0 ⁶	10.0 ⁶	10.0	R10
C6-9	15.0 ⁶	10.0 ⁶	15.0	R10
C7	2.0	—	—	—
C8-1	1.0	—	2.4	—
C8-2	2.0	—	4.8	—
C8-3	2.0	—	6.5	—
C8-4	5.0	—	6.5	—

¹ In C1 to C6 districts, nursing homes and non-profit residential facilities limited to residential FAR, except by special permit

² 4.0 FAR on wide streets outside Manhattan Core under Quality Housing Program

³ 7.2 FAR on wide streets outside Manhattan Core under Quality Housing Program

⁴ 3.0 FAR on wide street outside Manhattan Core; 2.43 on wide street within the Manhattan Core; 2.2 on narrow streets (under Quality Housing Program)

⁵ Up to 20% increase for attic allowance

⁶ Up to 20% increase for a public plaza bonus

⁷ FAR may differ in Inclusionary Housing designated areas

ONE DAY PLAZA at Finn Square

Date: Saturday , September 19th , 2015

Time: 4 hours long, tbd.

(between 10:00 am and 6:00 pm)

Sponsors:

NEW YORK CITY



TRIBECA TRUST

June 2014 ONE DAY PLAZA

FINN SQUARE



(AKA Franklin Street Station)

Saturday Stroll & Plaza Event

Where: Varick St will be closed between Franklin and Leonard

When: Saturday, June 14, 2014, 10 AM-5 PM

Organized by: Tribeca Trust with the approval from NYC DOT

Step back in time and enjoy a Saturday strolling a car free section of your neighborhood. Join Tribeca Trust's 'Plaza for a Day' and experience how pleasant your neighborhood could be with a car free, pedestrian friendly plaza. We'll feature fun, informative activities and leisure open space for all ages to enjoy including:

- Programs organized by the Tribeca Community School and New York Academy of Art
- Battery Dance Company's Dancing to Connect Children & Teen Workshops
- Impromptu musical performances (bring your own instrument and play)
- Square Diner will offer coffee and treats

During the day there will be opportunities to give us your input and ideas for Finn Square, and how to improve public spaces in Tribeca.

Check the schedule of the day on the Tribeca Trust website
www.tribecatrust.org

For information or to contribute to the day activities email to:
Galletti@tribecatrust.org





NEW YORK CITY



TRIBECA TRUST

June 2014 ONE DAY PLAZA

Surveys

FINN SQUARE TRIBECA Survey - Here for a day, have your say

What is your Zip code? 10013 Date: 6/14/14

How did you get here?
 Walk
 Bike
 Bus
 Train
 Car

What do you like most about this plaza?
 Location
 Amenities - seating, planters, umbrellas
 Open space/Ambiance
 Sociability/ People watching
 Other:

What could be improved at this space?
 Seating
 Umbrellas/shade
 Games
 Trees/plants
 Lighting
 Cleanliness
 Other:

Rank your neighborhood priorities (1 = Most important, 8 = Least important)
 Public Seating
 Cleanliness
 Safety
 Noise
 Parking
 Neighborhood public space
 Outdoor events
 Other:

Would you like to see a permanent plaza here?
 Yes No Please explain:
MY KIDS HAD A GREAT TIME HANGING OUT AND I WAS ABLE TO SIT DOWN AND RELAX

How would a permanent plaza here affect your shopping habits?
WE BOUGHT LUNCH NEARBY TO EAT THERE

Other comments:

Gender Male Female

Age Under 18 19 to 40 41 to 60 Over 61

Thank you for participating!
 TRIBECA TRUST

ODP Survey Summary

Event Name: FINN SQUARE TRIBECA Date: 6.14.14

What do you like most about this plaza? (total number)	
Location	18
Amenities	16
Open Space/Ambiance	20
Sociability/ People watching	22
Other	4

How Did You Get Here? (total number)	
Walk	26
Bike	6
Bus	-
Train	4
Car	-

Gender (total number)	
Males	10
Females	20

Age (total number)	
Under 18	4
19 to 40	13
41 to 60	15
Over 60	4

Rank your neighborhood priorities (average)	
Public Seating	21
Cleanliness	6
Safety	9
Noise	9
Parking	4
Neighborhood Public Space	25
Outdoor Events	13
Other	A

Zip Codes (list)	
10013	22
10024	1
10001	1
1007	8
10282	1
10012	3

Would you like to see a permanent plaza here? (total number)	
Yes	26
No	0
Undecided	

Comments:

ADD GREENSPACE - ADDITIONAL OPEN SPACE / NEIGHBORHOODS SPACE
 ENCOURAGE TO SUPPORT LOCAL FOOD PLACES NEARBY,
 GREAT LUNCH SPOT
 WONDERFUL OASIS
 KIDS PLAY

Manhattan Community Board 1 Committee Report

Financial District – R. Sheffe

1. 180 Maiden Lane, modification of previously approved certification M 920427(A) ZCM – Resolution
2. 90-94 Fulton Street, 130-136 William Street, Board of Standards and Appeals application to allow a proposed development to be partially located within the bed of a mapped but unbuilt portion of Fulton Street – Resolution
3. 77 Pearl Street, application for a wine and beer license for Four Star ½ Inc. d/b/a Justinos – Resolution
4. 133 Greenwich Street project – Report
5. 20 Pine Street ramp – Report



Manhattan Community Board 1 Committee Reports

Youth & Education – T. Joyce

1. New York City Department of Education Proposed Five-Year Capital Plan Amendment Fiscal Years 2015 – 2019 – Report
2. West Thames Park safety issues following preschool incident – Report
3. Kids Sail Scholarship Application – Report
4. Brookfield letter and response to Senator Squadron – Report



Manhattan Community Board 1

Committee Reports

Battery Park City – A. Notaro

1. Conversion of West Thames lawn surface – Resolution
2. Route 9A – Report
3. BPC Parks Enforcement Patrol – Report
4. Helicopter take-off from North Cove Marina – Report
5. Street permit activity guidelines process – Report
6. Missing Child Incident – Discussion
7. Neighborhood Updates – Discussion



West Thames lawn



**Rules of the City of New York -
Title 66
Department of Business Services**

§3-08 Landing and Takeoff at Other Than Licensed Heliports, Airports and Seaplane Bases.

(a) No aircraft shall land or takeoff within the limits of the City of New York except at licensed airports unless a permit allowing such operation has been obtained from the Commissioner.

(b) Any person may file an application in writing with the Department at its office, 110 William Street, 3rd floor, New York, New York, 10038.

(c) The application shall be subject to investigation and report by the Commissioner or his duly authorized representative.

(d) The application for a permit must show:

(1) A plot map showing the location of the proposed operation.

(2) Make, model and registration numbers of aircraft.

(3) Name and qualifications of the pilot-in-command.

(4) Permission of the property owner for the proposed operation.

(5) Purpose of the operation.

(e) The applicant must have in force upon the granting of the permit, liability insurance in such amounts and upon such terms as deemed appropriate by the Commissioner and with the City of New York as additional insured.

(f) No materials or equipment shall be transported outside of the aircraft.

(g) The Commissioner may issue a permit for the proposed operation if, in the Commissioner's judgment, the conduct of such operation will be in the public interest and not detrimental to public safety.

(h) The fee for the issuance of such permit shall be \$200.00 and the fee for the renewal thereof shall be \$135.00.

Manhattan Community Board 1 Committee Reports

Quality of Life – P. Moore

1. NYC Department of Transportation
Construction Update – Report
2. MJHS Metropolitan Jewish Health System,
Hospice and Palliative Care – Report
3. Gouverneur Health – Presentation by
Kenneth J. Feldman, PhD, FACHE,
Associate Executive Director of Ambulatory
Care – Report



The Center for Community Health and Wellness

- Comprehensive services include:
 - Pediatrics
 - Women’s Health
 - Ophthalmology
 - Dentistry
 - General Medicine
 - Behavioral Health
 - Rehabilitation
 - Radiology
 - Specialty and Surgical Services



Manhattan Community Board 1

Old Business

Manhattan Community Board 1

New Business

Manhattan Community Board 1

Adjournment

Thank you and goodnight!