



# Manhattan Community Board 1 Full Board Meeting

TUESDAY, FEBRUARY 25, 2014

6:00 PM

Hunter College MFA building  
205 Hudson Street

Catherine McVay Hughes, Chairperson  
Noah Pfefferblit, District Manager

# Manhattan Community Board 1

---

## Public Hearing

### I. Mayor's Preliminary Budget for CB 1 for FY 2015

- (1-2 minutes per speaker)
- To view City's response to CB1's budget requests please [link onto our web site](#)

### II. Welcome President Jennifer Raab of Hunter College

# Manhattan Community Board 1 Public Session

---

Comments by members of the public  
(6 PM to 7 PM)

(Please limit to 1-2 minutes per speaker, to allow everyone to voice their opinions)

# Manhattan Community Board 1 Business Session

---

Adoption of January 2014 minutes

Chairperson's report – *C. McVay Hughes*

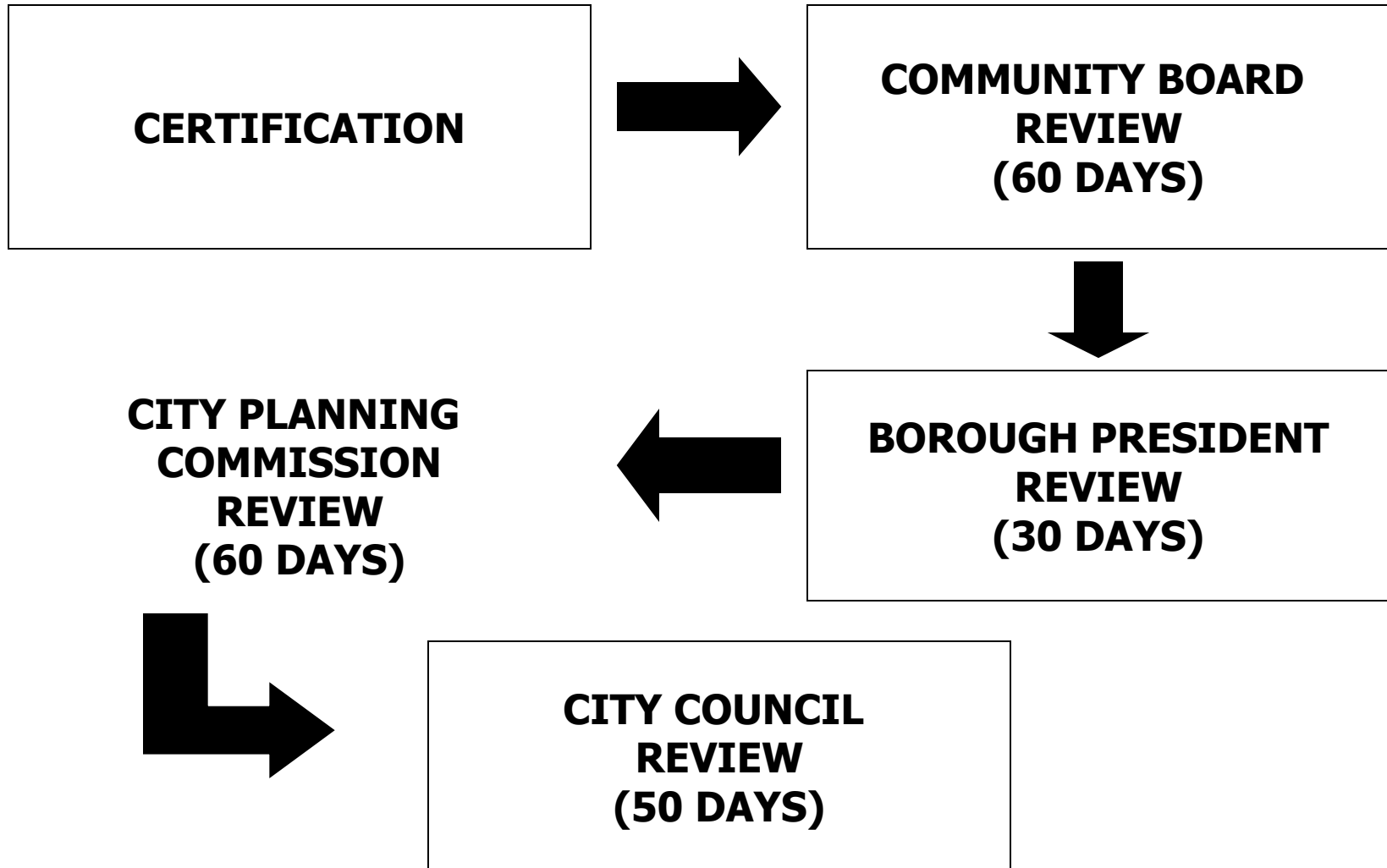
Ask for nominations of CB1 members to serve  
on the five member Nominating Committee

District Manager's report – *N. Pfefferblit*

# **SOUTH STREET SEAPORT RENOVATION PROJECT**

**2012**

# Uniform Land Use Review Procedure





# South Street Seaport Pier 17

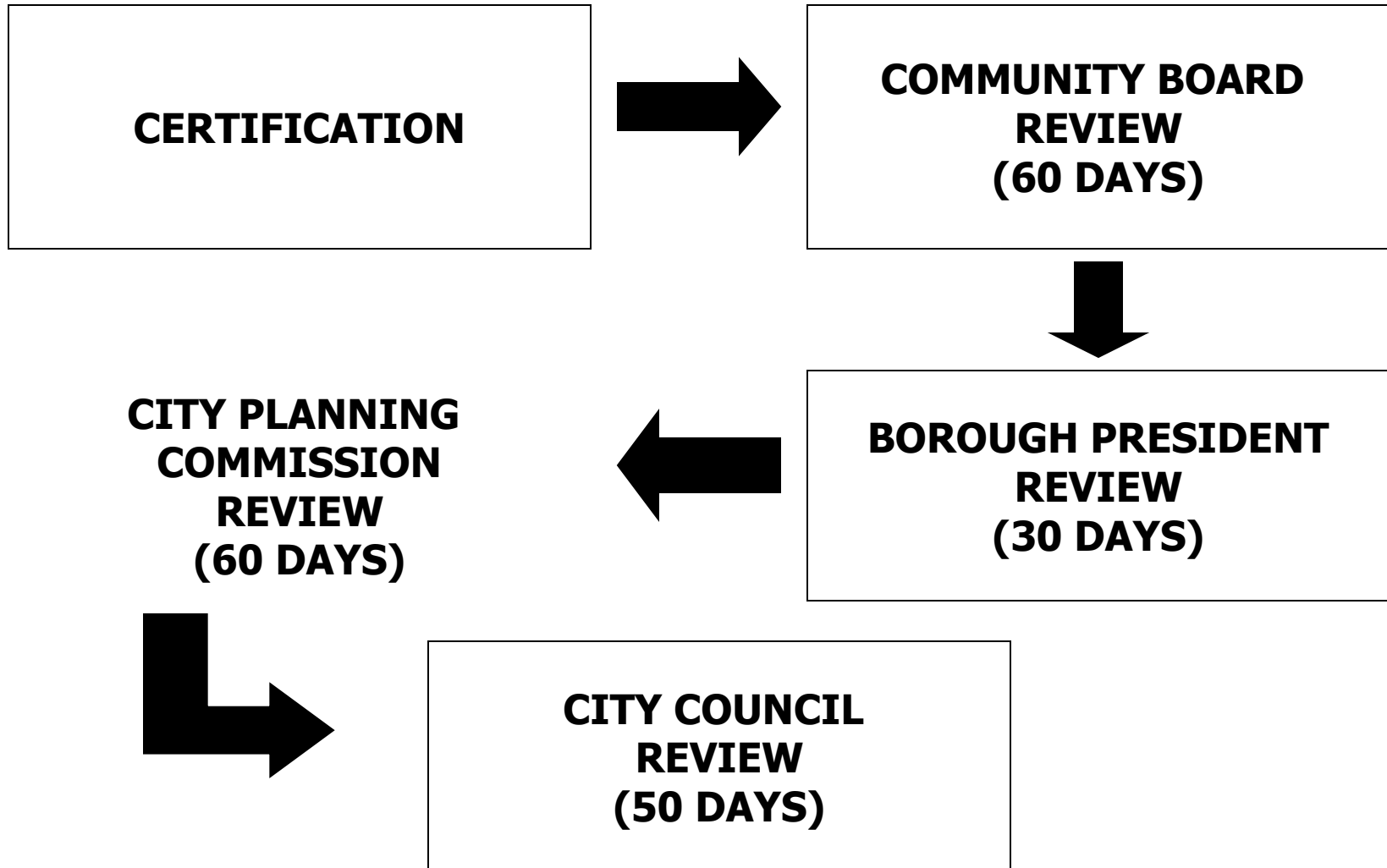




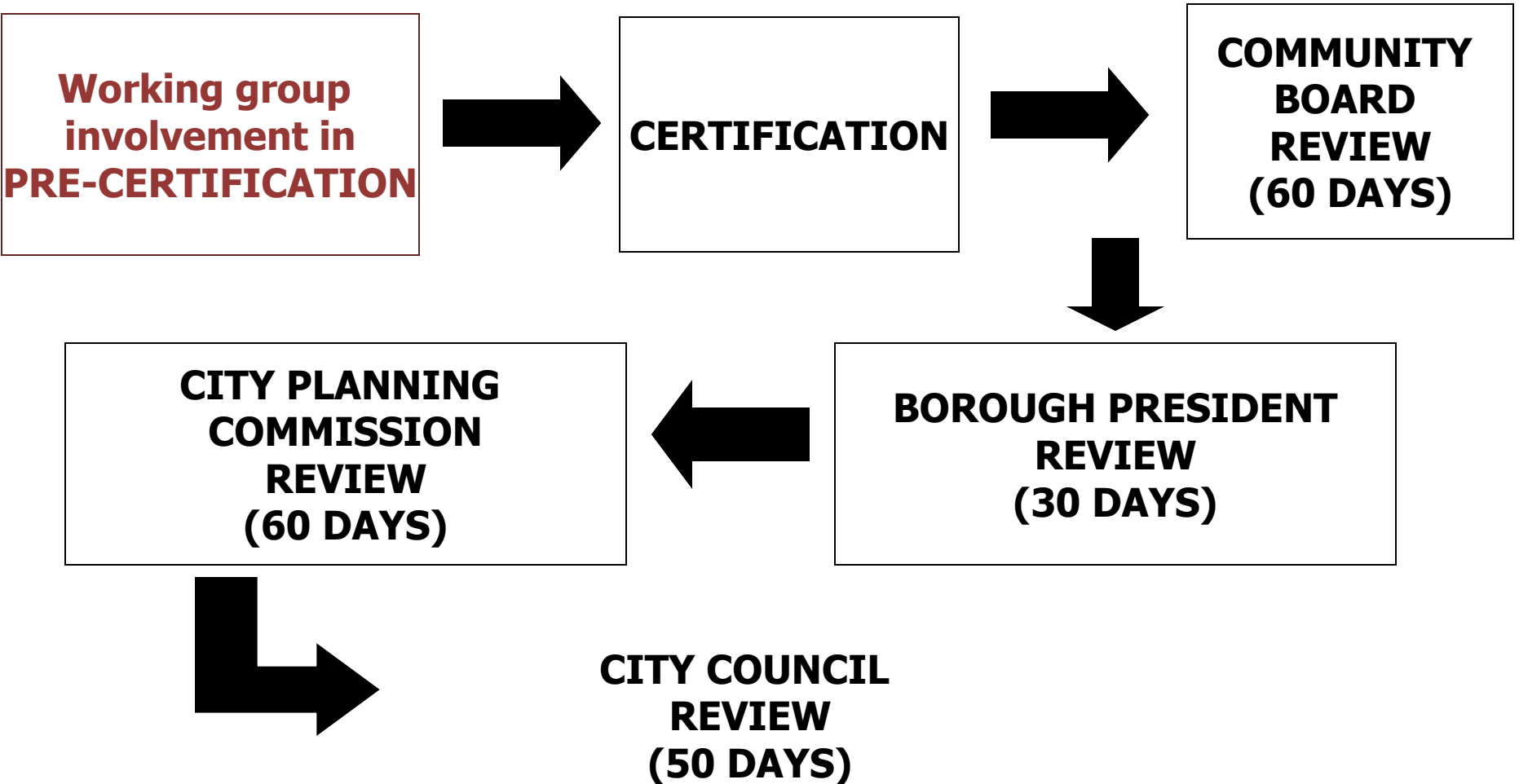




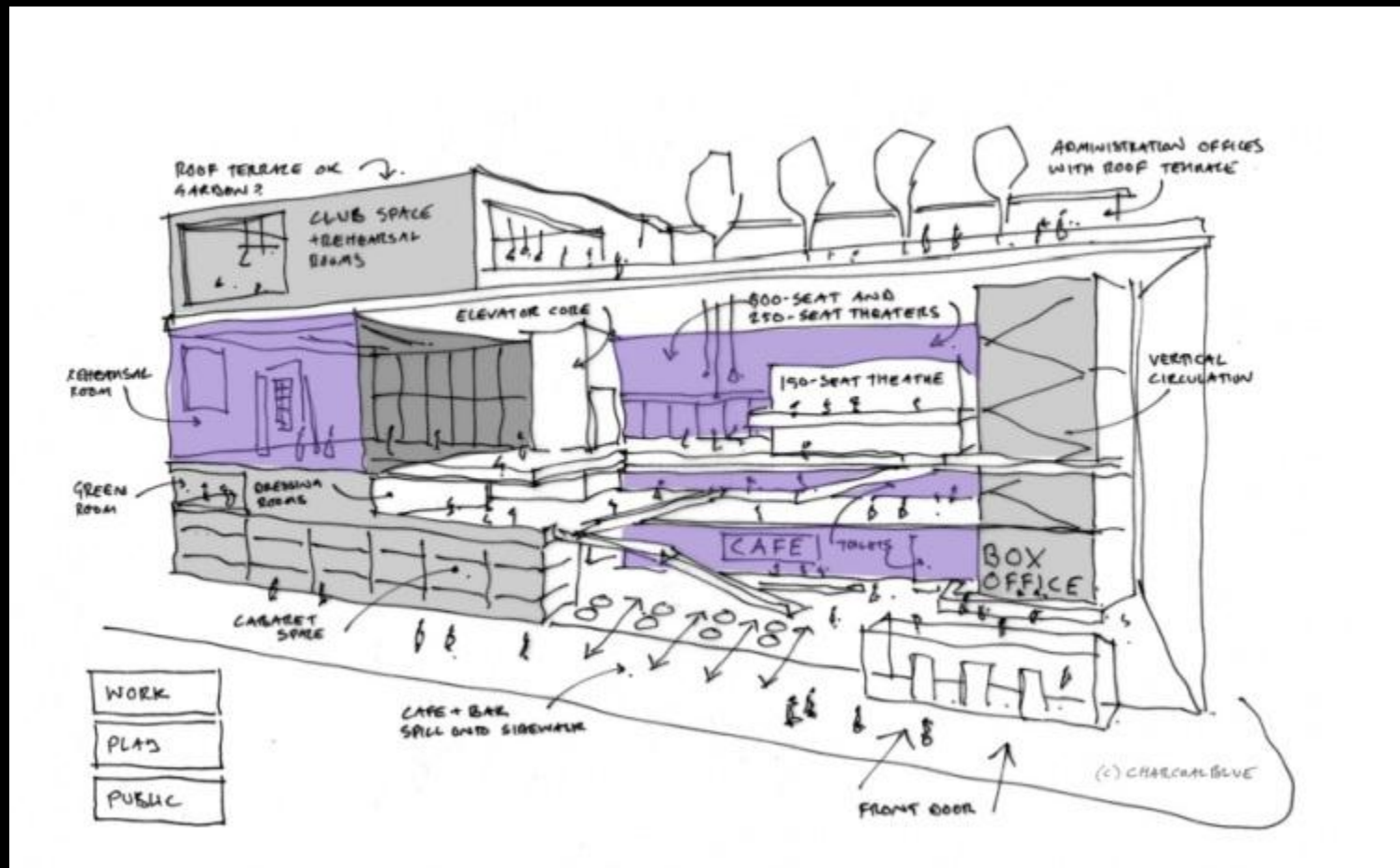
# Uniform Land Use Review Procedure



# Uniform Land Use Review Procedure



# World Trade Center Performing Arts Center



# Port Authority Opens First Platform At New WTC PATH Station

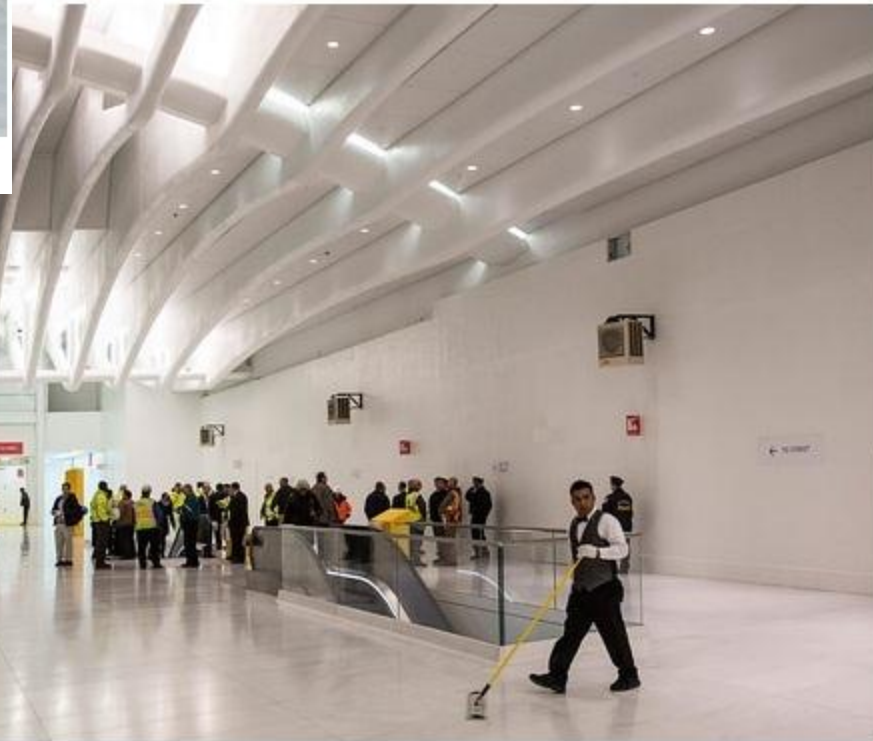
February 25, 2014 12:07 PM

[Like](#) 20 [Tweet](#) 10 [Share](#) 1

[View Comments](#)



The first train pulls into Platform A at the new World Trade Center PATH station, Feb. 25, 2014 (credit: Maria Diamond/WCBS 880)



A man sweeps the floor after the unveiling of a new platform for the New Jersey PATH Train at the World Trade Center Tuesday. — Getty Images



## World Trade Center Health Program; Amendments to List of WTC-Related Health Conditions; Cancer; Revision

WTC Health Program – Program Update

STAC – February 14, 2014 Meeting

Since the last meeting of the Scientific/Technical Advisory Committee (STAC) in March 2012, the WTC Health Program added more than 50 types of cancer to the List of WTC-Related Health Conditions, enrolled responders from the Pentagon and Shanksville, Pennsylvania sites, and finalized several policies and procedures to guide providers in determining WTC-related health conditions, including cancers, and medically associated health conditions. For more information about these policies and procedures, please visit the [WTC Health Program's website](#).

# WTC Health Program – Program Update STAC – from February 14, 2014 Meeting

**Table 1. Enrollment by Member Type (does not include deceased members)**

Responders (%)	FDNY (%)	Survivors (%)	Pentagon/Shanksville (%)	TOTAL
42,276 (64)	16,805 (25)	7,263 (11)	218 (<1)	66,562 (100)

**Table 2. Gender by Member Type**

Gender	Responders	FDNY	Survivors	Pentagon/Shanksville	TOTAL	Percent (%)
Male	35,871	15,628	3,438	204	55,141	83
Female	6,403	728	3,494	13	10,638	16
Unknown	2	449	331	1	783	1

**Table 3. Age by Member Type**

Age in Years	Responders	FDNY	Survivors	Pentagon/Shanksville	TOTAL	Percent (%)
< 20	9	143	50	0	202	<1
20-29	21	134	164	0	319	<1
30-39	3,300	1,544	646	15	5,505	8
40-49	15,556	5,246	1,414	76	22,292	34
50-59	14,926	6,260	2,345	92	23,623	36
60-69	5,822	2,441	1,863	34	10,160	15
70-79	1,308	840	551	1	2,700	4
80-89	164	103	150	0	417	<1
> 89	1,170	94	80	0	1,344	2



## WTC Health Program – Program Update STAC – from February 14, 2014 Meeting

**Table 7. Covered Health Conditions - Top 10**

Health Condition	Member Count
GERD	2,182
Unspecified Sinusitis	1,547
Chronic Rhinitis	1,463
Adjustment Reaction	1,049
Asthma	996
Anxiety	323
Prostate Cancer	320
Non-melanoma Skin Cancer	301
Episodic Mood - Depression	277
Melanoma of Skin	165

**Table 8. Covered Cancer Conditions - Top 10**

Type of Cancer	Member Count
Prostate	320
Non-melanoma Skin Cancer	301
Melanoma of Skin	165
Non-Hodgkin's Lymphoma	150
Thyroid	136
Lung/Bronchus	106
Kidney	99
Leukemia	90
Colon	86
Bladder	80

Program Statistics (as of February 11, 2014)

[WTC Health Program's website](#)

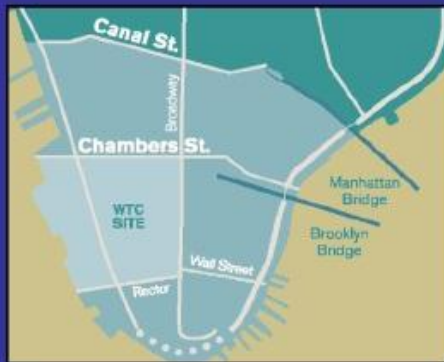
# Registry at a Glance

- Cohort study (20+years) of 71,434 exposed people with updates on health & access to care every 3 to 4 years
- Expanded data gathering for research
  - Mortality, cancer & hospitalization data obtained through matching with administrative databases
  - In-depth/clinical studies of selected subgroups
- Platform for independent & collaborative studies by external researchers
- Facilitation of 9/11 monitoring & healthcare for enrollees & their families in need

# Eligibility Groups

## Highly Exposed by Time and Place

<u>Group</u>	<u>N</u>
Rescue/recovery workers & volunteers at the site (9/11/01 to 6/30/02)	30,665
Building occupants & passers-by south of Chambers St. on 9/11	43,487
Residents south of Canal St. on 9/11	14,665
Children & staff in schools (pre K–12) south of Canal St. on 9/11	2,646



**~400,000** were eligible across the 4 groups.

**Exposed persons *did not need to be ill* to be eligible for enrollment. Individuals may belong to more than one group.**

# History

## Largest US effort to monitor health post-disaster

- 2002 Launched as an exposure registry funded by FEMA/ATSDR
- 2003-04 Wave 1 Survey  
30-minute phone interview on health & exposures
- 2006-07 Wave 2 (68% adult response rate (RR))
- 2010-11 Wave 3 (63% adult RR)
- 2013 Hurricane Sandy Survey (52% RR)
- 2015 Wave 4 planned

Funded by NIOSH since April 2009

# Respiratory

- Responders using **respirators** less likely to report respiratory problems than those with no/lower protection (Antao et al 2011)
- Pulmonary function tests (oscillometry) showed **lower airways disease** among residents/area workers associated with symptoms, exposure (Friedman et al 2011)

# Heart Disease & GERD

- Dust exposure & PTSD independently associated with elevated risk of **non-fatal heart disease** 2-6 yrs post 9/11 (Jordan et al 2011)
- **Cardiovascular hospitalization** was 32% higher in women with PTSD and 82% higher in male responders with high vs. low exposure (Jordan et al 2013)
- Persistent **symptoms of gastro-esophageal reflux disease** associated with 9/11 exposures (Li et al 2011)

# Mortality and Cancer

## Mortality

- Overall mortality below population rates, but **CV mortality** elevated in intensely exposed survivors vs. less exposed (Jordan et al 2011)

## Cancer

- No increased risk of cancer among those who did not perform rescue/recovery work (Li, et al 2012)
- Among rescue/recovery workers, there was an excess risk of **thyroid cancer, prostate cancer and myeloma**. No significant associations were observed with intensity of WTC exposure (Li et al 2012)

# Other Recent Findings

- **WTC tower evacuation time** was associated with number of reported structural and behavioral barriers (Groeger et al 2013)
- Respiratory symptoms associated with 9/11 exposures in younger **children** & behavior difficulties in **adolescents** (Stellman et al 2013)
- **Injury on 9/11** associated with elevated risk of heart & respiratory diseases with or without co-morbid PTSD (Brackbill et al, in press)
- Persons with 9/11-related PTSD were 7 times more likely to screen positive for **Hurricane Sandy-related PTSD** than those with no prior PTSD (preliminary finding)



# Three-way stop sign to be added at Battery Place and First Place



Photo by Tammy Meltzer

# Community Board 1 Traffic Hotspots

## Battery Park City

- **South End Avenue at intersections of Liberty, Rector and West Thames Street – we are working with NYC DOT to implement traffic calming effects by Spring 2014\***
- Battery Place and First Place, the area in front of PS 276 - parents have complained about potential dangers
- North End Avenue between Chambers and Vesey Streets and Warren Street between North End Avenue and West Street, between PS 89 and Ballfields – dangerous conditions
- South End Avenue in front of Gateway Plaza - crossing problems at turn off Liberty Street onto South End Avenue up to the turn into the Gateway complex
- Vesey Street – the north-south crossing on the west side of the bridge that is being dismantled is dangerous. The crosswalk and traffic light are blocked off and people cross in the middle of a two-way street with buses and cars going in both directions.

# Community Board 1 Traffic Hotspots

---

## Financial District

- **The southern portion of Water Street is hazardous to pedestrians. People have been killed by speeding cars while crossing the street there in recent years.\***
- Church Street at Vesey and Liberty Streets
- Route 9A/Westside Highway at Battery Tunnel area – pedestrian fatally struck
- Drivers of black-car limos pose hazards to pedestrians. They sometimes don't stop or slow down at stop signs after business hours.
- Intersection of Water street and Hanover Square – there has been one fatality
- Lax enforcement of existing statutes causes problems
- West Street at Albany and Vesey Streets

# Community Board 1 Traffic Hotspots

---

## Seaport/Civic Center

- **South Street intersections at Beekman Street and Peck Slip -- no lights, very fast traffic, block waterfront access\***
- **Beekman and Spruce Streets – dangerous intersection with two schools, Pace University, New York-Presbyterian/Lower Manhattan Hospital and a large construction project – more traffic control measures needed\***
- **Fulton & Beekman Streets – heavy traffic, confusing**
- **Pearl Street south of the Brooklyn Bridge including where it becomes St James Place - traffic entering bridge waved by, making it difficult to cross even with the light**

# Community Board 1 Traffic Hotspots

---

## Tribeca

- **Hudson Street at Beech, Laight and Vestry intersections in the vicinity of the Holland Tunnel – noise and congestion\***
- Laight Street and Hudson St - at rush hour traffic is bumper to bumper with no space for pedestrians and bike riders – with an exit from the Holland Tunnel crossing through this intersection and backing up Laight St as vehicles try to get onto the West Side Highway, there is no right turn aloud from the Holland Tunnel exit, but drivers making illegal right turns, endangering pedestrians and bikers who could be blind-sided

## General

- Motorized and other bicycles on sidewalks and going in the wrong direction on the street

\*Priority issues for each area are in bold

City Planning:

- Home
- About Us
- Zoning
- Applicant Portal
- Land Use Process
- Projects/Proposals
- Reference
- Products
- News

Take me to...

- Commission Meetings
- Commission Reports
- Census FactFinder



**Announcement**

Mayor de Blasio appoints Carl Weisbrod as Director of the Department of City Planning and Chair of the City Planning Commission. [Read more.](#)

# CB1 URBAN FELLOWS

---

- **Julien-Pierre A Schmitz**
  - Affordable Housing Guide & Stabilization Guide updates
  - New Unit Owner's Guide
  - Inventory of green buildings in CD1
- **Julie Farishta**
  - Senior population analysis
- **Aleena Sophonpanich**
  - CD1 cycling study
  - Pace University subway survey report
- **Julie Farishta & Aleena Sophonpanich**
  - CD1 open space survey update & expansion

# NY RISING COMMUNITY RECONSTRUCTION PROGRAM



## LOWER MANHATTAN PUBLIC MEETING NY RISING COMMUNITY RECONSTRUCTION PROGRAM

Help us prioritize projects at an Open House!

Attend any one of three Open Houses throughout Lower Manhattan,  
where you can learn more about:

**FLOOD PROTECTION  
AT HUDSON RIVER  
PARK**



**SUPPORTING  
COMMUNITY  
ORGANIZATIONS**



**PROTECTING  
BATTERY PARK**



**DISASTER  
PREPAREDNESS  
RESPONSE &  
PLANNING**



... AND MORE!

**SAT, MARCH 1**  
10am-12pm  
Village Community School  
Auditorium  
272-278 West 10<sup>th</sup> St.

**SAT, MARCH 1**  
3pm-5pm  
Southbridge Towers  
Community Room  
90 Beekman St.

**SUN, MARCH 2**  
1pm-3pm  
Confucius Plaza  
Community Room  
33 Bowery

[info@stormrecovery.ny.gov](mailto:info@stormrecovery.ny.gov) | [www.stormrecovery.ny.gov/community-reconstruction-program](http://www.stormrecovery.ny.gov/community-reconstruction-program)  
Twitter: #NYRising @NYStormRecovery | Facebook: NYStorm Recovery



# Manhattan Community Board 1 Committee Reports

## Executive Committee - C. McVay Hughes

- 1) New York City Council Int. No. 28 to require that all community board full board meetings be webcast – Resolution
- 2) NYC Department of Buildings task force for extreme weather best practices – Resolution
- 3) Con Edison cost analysis and discussion on the use of non-corrosive sidewalk salt – Resolution
- 4) City Council hearing on best practices for recruitment and appointments to community boards – Discussion
- 5) Downtown Alliance – Report
- 6) Commissioner Marco A. Carrión, Mayor's Community Assistance Unit – Report
- 7) CB1 Monthly Meetings for 2014 – Report





**WHAT  
TO DO**

**GETTING  
AROUND**

**WORKING  
& LIVING**

Downtown Alliance  
Grow Your Business  
Research  
Newsroom  
Contact Us

home

ShareThis

WHERE TO GO MEETING SPACE RETAIL SPACE EVENTS SITE DOWNTOWN DEALS



**SEARCH:**

What are you looking for?

all results

keyword

GO

## Alliance for Downtown New York Appoints Jessica Lappin as President

-2/3/2014

[Download PDF](#)



The Alliance for Downtown New York, the organization that manages the city's largest Business Improvement District, announced today that former New York City Council Member Jessica Lappin has been named its next president. Ms. Lappin will also serve as the president of the Alliance's sister organization, the Downtown Lower Manhattan Association.

"We are delighted that Jessica has joined us as the Alliance's fourth president," said Robert R. Douglass, Chairman of the Alliance for Downtown New York. "Jessica's energy, policy acumen, skills as a persuasive advocate and track record of substantial accomplishments in public service will enable her to make important, lasting contributions to the future of Lower Manhattan."

## IN THE NEWS

**Downtown Boomtown Alliance Report Shows Strong Surges In Business, Residential, And Tourist Interest**

2/25/2014

- The Broadsheet Daily

**Free WiFi Expanded Downtown Water Street Corridor Comes Online**

2/25/2014

- The Broadsheet Daily

**Downtown Goes Glossy**

2/24/2014

- Capital

Search

GO

PRINTER FRIENDLY

TRANSLATE THIS PAGE

TEXT SIZE: A A A

- Home >
- About CAU >
- Hurricane Sandy Recovery >
- Find Your Community Board >
- Get Involved >
- Graffiti Free NYC >
- Contact CAU >

Follow us on Twitter 

Like us on Facebook 



**Mayor de Blasio appoints  
Marco A. Carrión,  
Commissioner of Community  
Affairs Unit**

[Read more](#)

# Manhattan Community Board 1 Committee Reports

## Quality of Life – P. Moore

- 1) NYC DOT – Report
- 2) Bus parking and idling policy enforcement – Report
- 3) RoadRunners Half Marathon – Report
- 4) Community District 1 subway station survey by Pace University students – Report
- 5) Police misconduct and citizen rights – Report
- 6) Rodent Academy – Report
- 7) Fire Safety Forum – Report
- 8) Concerns regarding radon levels in gas delivered to NYC homes – Report



# DOT Website

[www.nyc.gov/dot](http://www.nyc.gov/dot)

- **Contact DOT** (Tab on the left side of page)

- Scroll down the page to "Contact your Borough Commissioner"

## Contact your Borough Commissioner

If you have an inquiry or complaint in your neighborhood, contact your Borough Commissioner.

<b>Bronx</b> Borough Commissioner Constance Moran 212-748-6680 <a href="#">» Report a problem to the Bronx Borough Commissioner</a>	<b>Brooklyn</b> Borough Commissioner Joseph Palmieri 718-222-7239 <a href="#">» Report a problem to the Brooklyn Borough Commissioner</a>
<b>Lower Manhattan</b> (Manhattan south of Canal Street) Borough Commissioner Luis Sanchez 212-839-7250 <a href="#">» Report a problem to the Lower Manhattan Borough Commissioner</a>	<b>Manhattan</b> (Manhattan north of Canal Street) Borough Commissioner Margaret Forgiione 212-839-6210 <a href="#">» Report a problem to the Manhattan Borough Commissioner</a>
<b>Queens</b> Borough Commissioner Dalila Hall 212-839-2510 <a href="#">» Report a problem to the Queens Borough Commissioner</a>	<b>Staten Island</b> Borough Commissioner Tom Cocola 212-839-2400 <a href="#">» Report a problem to the Staten Island Borough Commissioner</a>

The screenshot shows the NYC DOT website interface. At the top, there is a navigation bar with 'File', 'Edit', 'View', 'Favorites', 'Tools', and 'Help'. Below that is the NYC logo and a banner image of a bridge. The main content area is divided into a left sidebar and a main content area. The sidebar contains a list of navigation links: Home, About DOT, Pedestrians, Bicyclists, Ferries & Buses, Motorists & Parking, Infrastructure, and Contact DOT (highlighted in green). The main content area features a 'CONTACT DOT' section with the heading 'Write to Lower Manhattan Commissioner Luis Sanchez'. Below this heading, there is a paragraph of text and several links: 'Please use this form to write to DOT with your transportation-related issues.', '» Please contact the MTA with issues with the subway, buses or commuter rail.', '» Contact the Police Department for issues with traffic enforcement agents or towed vehicles.', and '» Contact the Department of Finance for assistance with parking tickets and camera violations.' There is also a link to translate the page into various languages. Below the text, there is a form with two dropdown menus: 'What's the general topic?' and 'What kind of place?'. At the bottom of the page, there is a footer with 'Copyright 2013 The City of New York' and links for 'Contact Us', 'Privacy Policy', and 'Terms of Use'.

- Fill in all the required fields

- Once submitted, our office will be able to review the request, address issue or, assign it to the appropriate DOT unit for their review and response.

# Permit Issues



- Noisy activity before 7AM and after 10PM
- Unkempt and dirty construction sites
- Staging construction vehicles on travel lanes
- Unauthorized street/lane closures
- Lack of Official NYCDOT signs
- Removing or NOT restoring existing DOT signs
- Parking private vehicles in work area
- Lack of pedestrian ramp transitions
- No protection for catch basins



## Construction Mitigation



- Signal Timing Changes
- Sidewalk Extensions
- Full Closures/Detours/Signage
- Coordination with Projects
- Curbside regulations
- Pedestrian Managers/Flaggers



## Lower Manhattan Bus Challenges

- **Major roadway reconstruction**
  - Holland Tunnel area, Chambers Street, Broadway and Seaport Area
  - Future work: South Street, Worth Street
- **WTC construction** access and staging
  - Truck staging and access for WTC on Trinity Place/Church Street
  - West Street reconstruction
- **Insufficient curbside space** to meet parking demand
  - Competing uses for scarce curbside space, including government placards, commercial deliveries, construction zones and staging
  - Expanding residential community means fewer appropriate on-street parking locations



# Our Bus Management Strategy

## **Educate** industry about our rules and regulations

- DOT website ([www.nyc.gov/tourbus](http://www.nyc.gov/tourbus)), brochure, and map
- Direct outreach and education by our partners
- Regulatory signs throughout lower Manhattan

## **Monitor** and record violations

- Constituent complaints
- DOT staff observations
- Input from NYPD, Downtown Alliance, LMCCC, BPCA, MTA, other partners

## **Communicate** directly with tour bus companies

- Emails to companies found in violation

## **Coordinate** with NYPD on enforcement

- Share observations, trends, and information received from stakeholders
- In-person meetings with management of repeat offenders

# Communication with Companies

## First offenders

- Email with violation information and tour bus educational material

## Repeat offenders

- Violations packet and invitation for in-person meeting at DOT offices

## In-Person Meetings

- Tour bus company management attends
- DOT and NYPD staff attend
- Review violations
- Discuss ways to improve operations:
  - GPS remote tracking of vehicles
  - Improve driver education
  - Improve itineraries
  - Make specific parking arrangements
  - Better communication with tour guides



Turn on Greenwich St



Layover on South St

# Half Marathon Traffic Alert



FOR COURSE UPDATES AND ENTERTAINMENT INFORMATION, VISIT NYRR.ORG

FOR TRANSIT INFORMATION, VISIT MTA.INFO

CURRENT AS OF 1/24/14

**West Side Highway** (southbound only)  
from 44th Street to Battery Place

**Battery Park Underpass** (southbound only)  
starting at 5AM

**FDR Drive**  
northbound to South Street

**South Street**  
from Whitehall Street to John Street

**Maiden Lane**  
from South Street to Pearl Street

**Water Street**  
from John Street to Whitehall Street  
until 3PM

**Front Street**  
from Maiden Lane to Wall Street

**Limited/No Access on side streets crossing Water Street and South Street between John St and Whitehall Street**

**Access to Battery Park City via Battery Place and West Street controlled bypass between Liberty Street and Vesey Street**

SEE MTA.INFO FOR IMPACT ON BUS ROUTES.

EXPECT HEAVY PEDESTRIAN TRAFFIC AROUND THE STATEN ISLAND FERRY TERMINAL AND BATTERY PARK.

**TRAFFIC ALERT • TRAFFIC ALERT • TRAFFIC ALERT • TRAFFIC ALERT**

# Manhattan Community Board 1 Committee Reports

## Tribeca - P. Braus

- 1) Spring Studios – Report
- 2) Bogardus Capital Project – Report
- 3) Conversion of 1st Police Precinct stable into temporary WTC Security Command Center – Resolution
- 4) 5 White Street, application for transfer of liquor license to entity to be formed by Dan Abrams – Resolution





## PUBLIC WORKSHOP: Bogardus Plaza Redesign

**Subject:** Currently implemented with temporary materials, Bogardus Plaza is slated to be redesigned along with Bogardus Garden to create one connected, permanent public space. Please join us and give your input about plaza design opportunities.

**Date:** Thursday, February 27, 2014

**Time:** 6:30-8:30 p.m.

**Location:** Downtown Community Center, Manhattan Youth, 120 Warren Street (at West Street)

**Contact:** Emily Weidenhof at NYC DOT, 212-839-4325 or [eweidenhof@dot.nyc.gov](mailto:eweidenhof@dot.nyc.gov)

**Sponsors:** NYC DOT, NYC DDC, & Friends of Bogardus Garden

# Conversion of 1st Police Precinct stable into temporary WTC Security Command Center



PHOTO BY CARL GLASSMAN / TRIBECA TRIB

# Manhattan Community Board 1 Committee Reports

## Tribeca - P. Braus

- 5) Tribeca Family Festival activity permit application for Greenwich Street between Hubert Street and Chambers Street; Beach Street between Hudson Street and Greenwich Street; North Moore Street between West Street and Hudson Street; Franklin Street between Hudson Street and Greenwich Street; Harrison Street between West Street and Hudson Street; Jay Street between Hudson Street and Greenwich Street, Duane Street between Hudson Street and Greenwich Street; Reade Street between Hudson Street and Greenwich Street, Saturday, April 26, 2014 10:00 am to 11:59 p.m. – Resolution



# Manhattan Community Board 1 Committee Reports

## Tribeca - P. Braus

- 6) 175 Franklin Street, application for liquor license for 175 Franklin LLC – Resolution
- 7) 190A Duane Street, sidewalk café renewal application for Nonna Restaurant Corp, d/b/a Roc – Resolution
- 8) Bastille Day 2014 Street Activity Permit application for West Broadway between White Street and Walker Street, Thursday, July 10, 2014, 11:00 am to 7:00 pm – Resolution





# Manhattan Community Board 1 Committee Reports

## Youth & Education – T. Joyce

- 1) Speaker Silver, Council member Chin and CEC D2 letters to Chancellor Farina regarding the restoration of seats to the Capital Plan and loss of Pre-K's downtown – Report
- 2) Parks free mobile event units – Report
- 3) CB1's Educational Priorities – Resolution



# DOE FY 2010-2014 Capital Plan

“Given the time it takes to design and complete school buildings, many of the capacity projects created by the FY 2010 – 2014 Capital Plan will open over the next several years. The table below provides the geographic details of the seats coming on line in the next few years.”

[DOE Capital Plan Report](#)

District	Sept. 2014	Sept. 2015	Sept. 2016	Sept. 2017	Total
<b>Manhattan</b>					
2	518	1,019			1,537
<b>Bronx</b>					
8			468		468
10	640		428		1,068
11		1,332			1,332
<b>Brooklyn</b>					
15	332	757			1,089
20		496		640	1,136
22				757	757
<b>Queens</b>					
24	1,048	1,582	1,041	796	4,467
25			376		376
27	444				444
28		833	396		1,229
29		731	372		1,103
30	931	472	376	654	2,433
<b>Staten Island</b>					
31		444			444
<b>Total</b>	<b>3,913</b>	<b>7,666</b>	<b>3,457</b>	<b>2,847</b>	<b>17,883</b>

District	Sub-District	Total November 2013 Identified Need	February 2014 Funded Need	Additional Need (Unfunded)	Number of Seats in Scope / Design
2	Tribeca / Village	1,970	1,928	42	1,016
	Chelsea/ Midtown West *	1,262	1,262	0	

# Manhattan Community Board 1

## Committee Reports

### Financial District – R. Sheffe

- 1) 30 Park Place – Report
- 2) LMCCC – Update by Joseph Simenic, Executive Director
- 3) 66 John Street – Report
- 4) 133 Greenwich Street – Report
- 5) Proposal for canopy at the Pier 11 waiting area – Resolution
- 6) 123 William Street – Resolution
- 7) 66 Pearl Street, application for wine and beer license for Pachanga Inc., b/d/a Fika – Resolution
- 8) Street permit application by Chabad of Wall Street (Mardi Gras Festival Productions, promoter) on Monday, May 26, 2014, Liberty, Broadway and Trinity Place – Resolution



# 30 PARK PLACE PUBLIC PARK



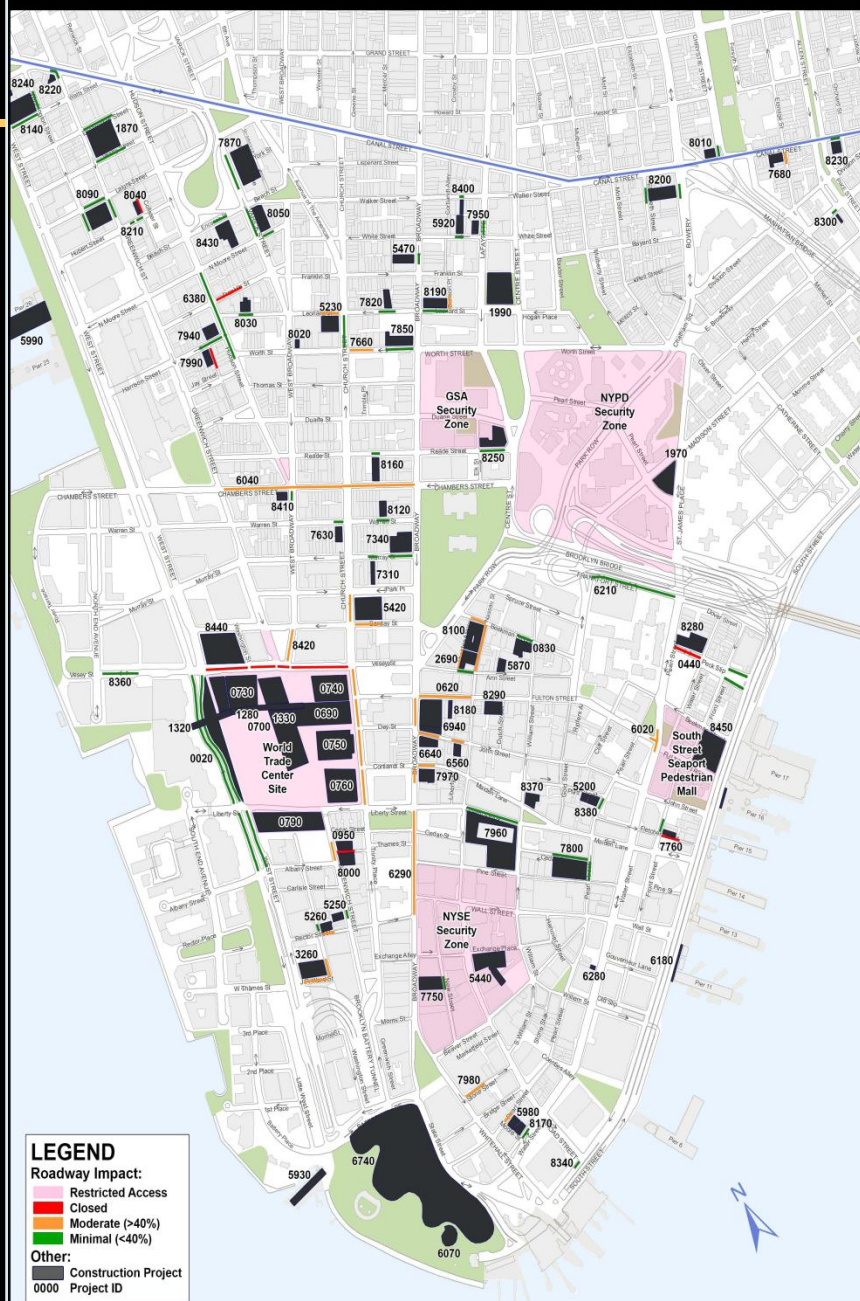


LOWER MANHATTAN  
CONSTRUCTION  
COORDINATION CENTER  
FOR THE STRONG CONSTRUCTION

# LOWER MANHATTAN CONSTRUCTION PROJECTS

## Projects and Street Impacts on Mon. January 6, 2014

This information, which is drawn from the LMCCC's Coordination Schedule, is compiled from various sources and intended to be used for coordination purpose only. The base map data is provided by DOITT. This map cannot be redistributed or published without the expressed written consent of the LMCCC.



**LEGEND**

**Roadway Impact:**

- Restricted Access
- Closed
- Moderate (>40%)
- Minimal (<40%)

**Other:**

- Construction Project
- 0000 Project ID

# Pier 11 New Canopies



# Manhattan Community Board 1

## Committee Reports

Financial District - R. Sheffe  
Seaport/Civic Center - J. Fratta

- 9) Street permit application by NYC Police Museum Fair (Mardi Gras Festival Productions, promoter) on Friday, June 6, 2014, Broad Street, South Street and Water Street – Resolution
- 10) Street permit application by ZIUA (Mardi Gras Festival Productions, promoter) on Sunday, June 22, 2014, Broadway, Liberty Street and Battery Place – Resolution
- 11) Street permit application by Sons of Italy Freedom (Mardi Gras Festival Productions, promoter) on Friday, August 1, 2014, Liberty Street, Broadway and Trinity Place – Resolution



# Manhattan Community Board 1

## Committee Reports

Financial District - R. Sheffe

Seaport/Civic Center - J. Fratta

- 12) Street permit application by the 1st Pct (Mardi Gras Festival Productions, promoter) on Friday, August 30, 2014, Liberty, Broadway and Trinity Place – Resolution
- 13) Street permit application by Bowling Green Association (Mardi Gras Festival Productions, promoter) on Sunday, October 13, 2014, Whitehall, Stone, Water, Morris, Liberty Streets, Battery Place and Broadway – Resolution
- 14) Street permit application by IPTA (Mardi Gras Festival Productions, promoter) on Monday, November 11, 2014, Broadway, Liberty Street and Battery Place – Resolution





# Manhattan Community Board 1 Committee Reports

## Battery Park City – A. Notaro

- 1) RoadRunners Half Marathon – Report
- 2) BPC Homeowners' Coalition – Report
- 3) Parks Enforcement Patrol – Report
- 4) Battery Park City Committee Report – Report
- 5) 225 Liberty Street, application for liquor license for The Little Kitchen Restaurant Group LLC d/b/a Little Muenster – Resolution



# Manhattan Community Board 1

## Committee Reports

### Seaport/Civic Center - J. Fratta

- 1) Peck Slip School – Report
- 2) Street Co-Naming: Peck Slip & Harold Reed Way – Report
- 3) Old Seaport Alliance – Report
- 4) Brooklyn Bridge public space project by Pace University students – Report
- 5) 230 Canal Street, application for a new liquor license for 230 Canal Rest. Inc. – Report
- 6) Change in traffic direction on Peck Slip – Resolution
- 7) Street Activity Permit, application by Dushahra festival, Thursday, September 18 – Monday September 22, 2014, South Street between John and Beekman – Resolution



# Manhattan Community Board 1

## Committee Reports

### Seaport/Civic Center - J. Fratta

- 1) Peck Slip School – Report
- 2) Street Co-Naming: Peck Slip & Harold Reed Way – Report
- 3) Old Seaport Alliance – Report
- 4) Brooklyn Bridge public space project by Pace University students – Report
- 5) 230 Canal Street, application for a new liquor license for 230 Canal Rest. Inc. – Report
- 6) Change in traffic direction on Peck Slip – Resolution
- 7) Street Activity Permit, application by Dushahra festival, Thursday, September 18 – Monday September 22, 2014, South Street between John and Beekman – Resolution

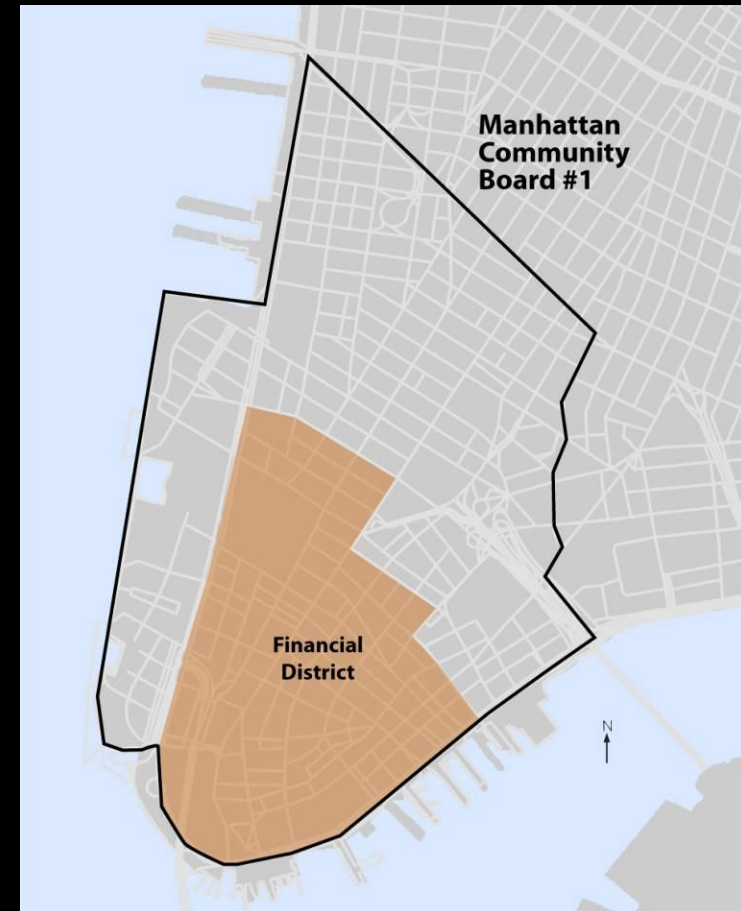


# Manhattan Community Board 1

## Committee Reports

### Seaport/Civic Center - J. Fratta

- 8) Street Activity Permit, application by Downtown Independent Democrats Festival, Sunday, April 20, 2014, Lafayette Street between Canal and Leonard – Resolution
- 9) 150 Nassau Street, application for a restaurant liquor license for Nassau 8793 LLC d/b/a/ Denny's – Resolution
- 10) 225 Front Street, application for a liquor license alteration for Dona Gallo Inc.d/b/a Barbalu – Resolution
- 11) 111 Fulton Street, application for a new wine and beer license for 111 Fulton LLC – Resolution
- 12) 27 Cliff Street, reconsideration of an application for a restaurant liquor license for Dalglish 7 Inc. – Resolution





new york design

Denny's Bar Area



Denny's Entrance from Nassau St

# Manhattan Community Board 1 Committee Reports

## Planning – J. Galloway

- 1) Proposed signage for East River Esplanade, New York City Economic Development Corporation – Resolution
- 2) Route 9 A – Report





East River  
Esplanade



East River  
Esplanade

Welcome  
Please be courteous  
and respectful to others.

**Rules/Prohibitions:**

Drinking  
Smoking  
No feasting except in designated areas  
Consumption of alcohol  
Annoying sound, except by permit  
Profanity  
Entering the park after it is closed  
Derogatory or obscene acts  
20 people, except by permit  
Vehicles without specific authorization from Parks & Recreation  
Dogs must be kept on-leash and vaccinated

**Les Prohibitions:**

Boire alcool  
Fumer  
Avoir le parc après sa fermeture désignée  
Consommation d'alcool  
Bruit gênant, excepté si permis  
Profanités  
Entrer au parc après de sa fermeture  
Derogatoires ou obscènes de plus de 20 personnes, excepté si permis  
Infraction au règlement des véhicules sans autorisation de Parcs de Paris  
Les chiens doivent être en laisse et vaccinés à jour

**規則**  
禁止飲酒、吸煙、

禁止飲食  
禁止喧嘩  
禁止飲酒、吸煙  
禁止在指定區域外飲食  
禁止在指定區域外飲酒  
禁止在指定區域外飲酒  
禁止在指定區域外飲酒  
禁止在指定區域外飲酒  
禁止在指定區域外飲酒

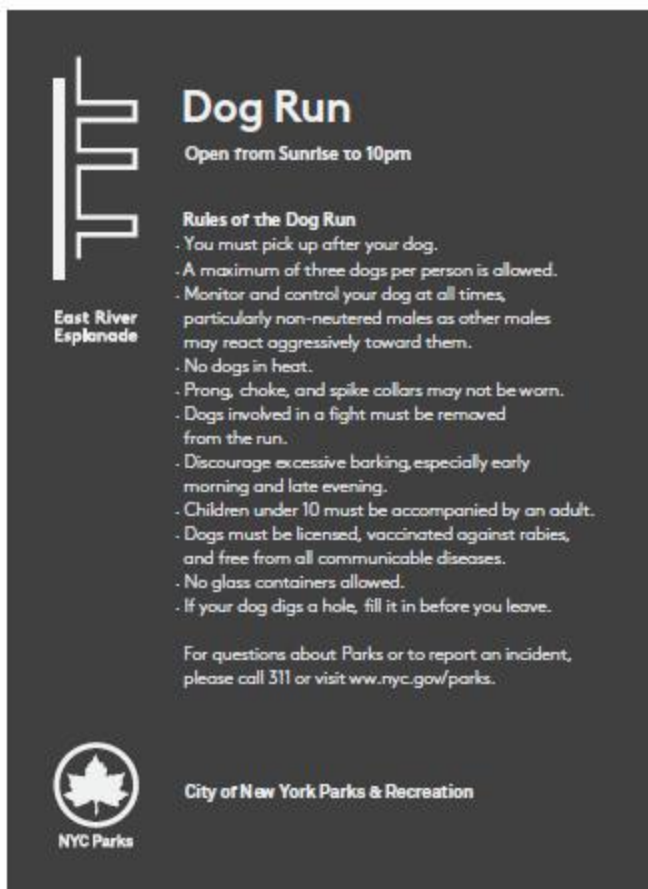


For questions about NYC Parks or to report an incident,  
please call 311 or visit [www.nyc.gov/parks](http://www.nyc.gov/parks)





## Park Amenity Signage: Dog Run (original)



The graphic design for the Dog Run signage is presented on a dark grey background. On the left side, there is a white icon of the East River Esplanade, consisting of a vertical line with several horizontal bars of varying lengths extending to the right. Below this icon, the text 'East River Esplanade' is written in a white, sans-serif font. To the right of the icon, the title 'Dog Run' is displayed in a large, bold, white sans-serif font. Below the title, the text 'Open from Sunrise to 10pm' is written in a smaller white font. Further down, the heading 'Rules of the Dog Run' is followed by a list of ten rules, each preceded by a small white dot. The rules cover topics such as picking up dogs, dog limits, control, aggression, heat, collars, fights, barking, children, licensing, and glass containers. At the bottom of the page, there is a white circular logo featuring a stylized leaf, with the text 'NYC Parks' below it. To the right of the logo, the text 'City of New York Parks & Recreation' is written in a white font.

**East River Esplanade**


# Dog Run

Open from Sunrise to 10pm

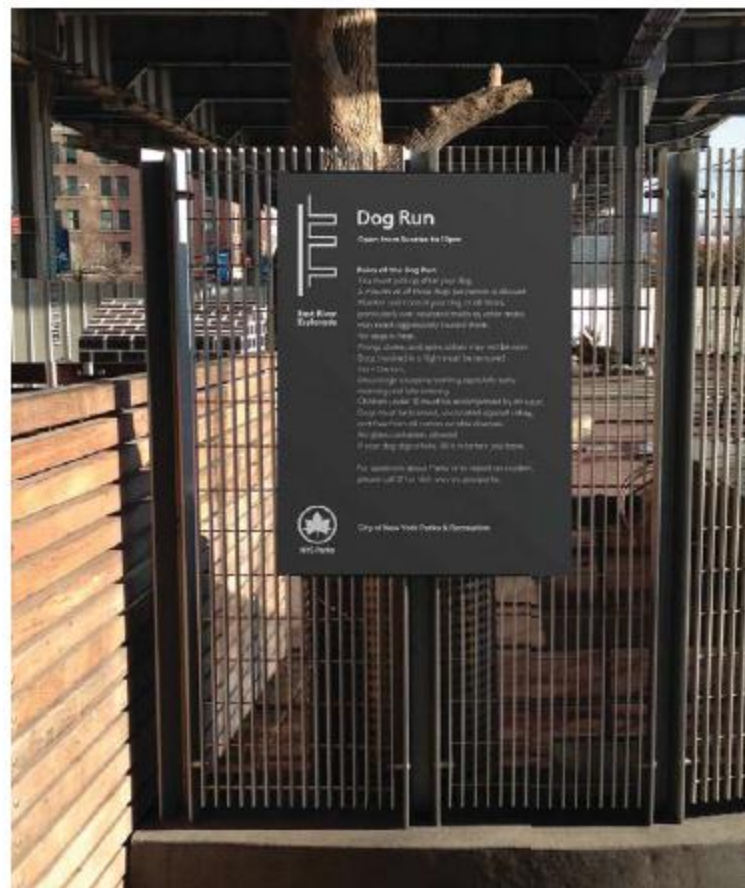
### Rules of the Dog Run

- You must pick up after your dog.
- A maximum of three dogs per person is allowed.
- Monitor and control your dog at all times, particularly non-neutered males as other males may react aggressively toward them.
- No dogs in heat.
- Prong, choke, and spike collars may not be worn.
- Dogs involved in a fight must be removed from the run.
- Discourage excessive barking, especially early morning and late evening.
- Children under 10 must be accompanied by an adult.
- Dogs must be licensed, vaccinated against rabies, and free from all communicable diseases.
- No glass containers allowed.
- If your dog digs a hole, fill it in before you leave.

For questions about Parks or to report an incident, please call 311 or visit [www.nyc.gov/parks](http://www.nyc.gov/parks).

  
NYC Parks

City of New York Parks & Recreation





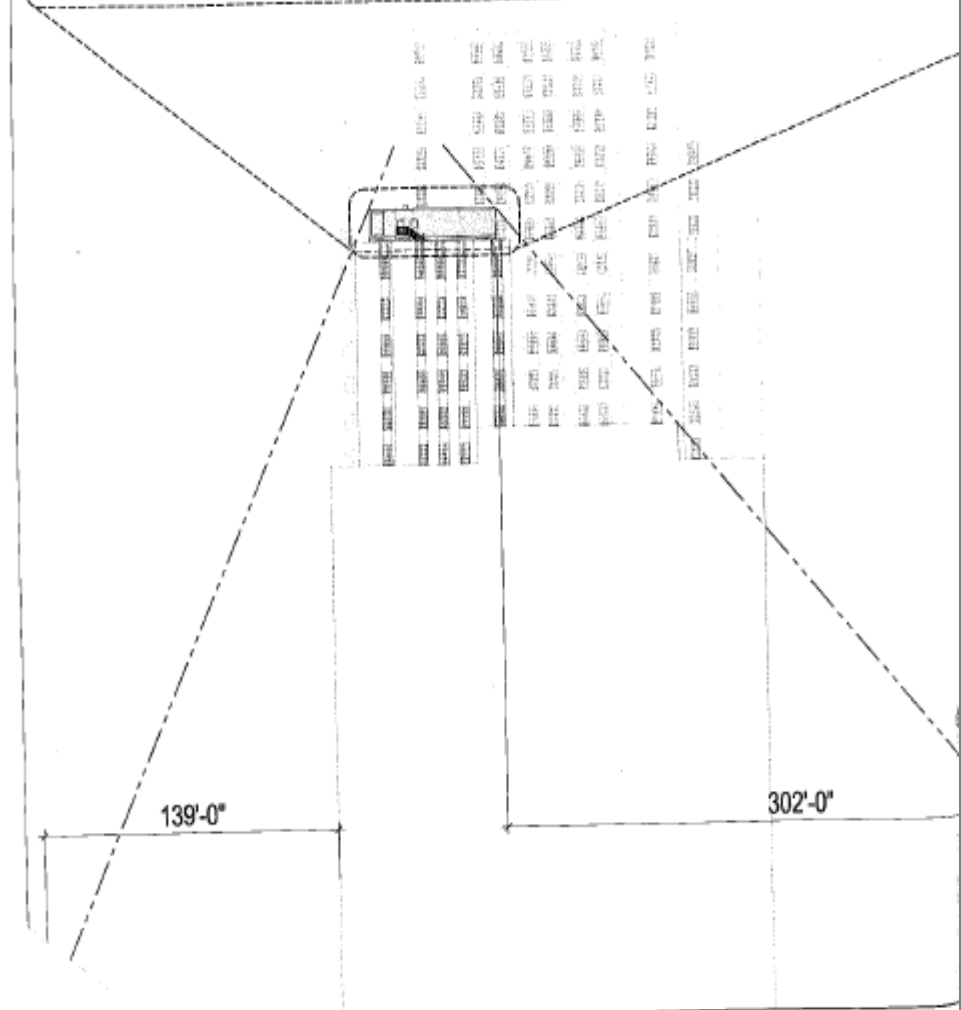
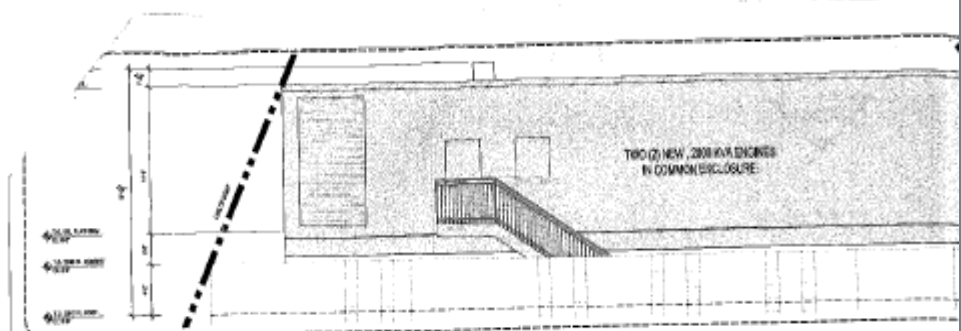
**ROUTE 9A**

# Manhattan Community Board 1 Committee Reports

## Landmarks – R. Byrom

- 1) 44 Lispenard Street, application for one story plus penthouse addition – Resolution
- 2) 105 Hudson Street, application for reconstruction of platform and installation of new handicap lift – Resolution
- 3) Governors Island, application for historic monument relocation – Resolution
- 4) 32 Avenue of the Americas, application for installation of emergency generator on setback roof at 22nd floor – Resolution





AMERICAS ELEVATION (WEST ELEVATION)



# HIGHLAND ASSOCIATES

Architects Engineers  
100 N. 10th St.  
New York, NY 10038

- REVISIONS
- 1 05/24/75 ISSUED FOR PERMITS
  - 2 06/15/75 ISSUED FOR 100% PERMITS
  - 3 09/16/75 ISSUED FOR BID
  - 4 10/02/75 ISSUED FOR CONSTRUCTION

PROPOSED GEN. LOCATION ON 22ND. FL. SETBACK



1 SITE PHOTO: EXISTING  
SCALE: 1/8" = 1'-0"



2 SITE PHOTO: EXISTING  
SCALE: 1/8" = 1'-0"



3 SITE PHOTO: EXISTING  
SCALE: 1/8" = 1'-0"

32 AVE. OF AMERICAS SITE PLAN  
SCALE: 1/8" = 1'-0"



# TELX NY LEVEL 10 EXPANSION

32 AVENUE OF THE AMERICAS  
NEW YORK, NY 10013

LANDMARKS SITE PLAN & AXONOMETRIC

DATE	NO.	REVISION
10/1/75	1	ISSUED FOR PERMITS
10/1/75	2	ISSUED FOR 100% PERMITS
10/1/75	3	ISSUED FOR BID
10/1/75	4	ISSUED FOR CONSTRUCTION

# Manhattan Community Board 1

---

## Old Business

No Business conducted

# Manhattan Community Board 1

---

## New Business

No Business conducted

# Manhattan Community Board 1

---

## Adjournment

Thank you and goodnight!