



The City of New York

Manhattan Community Board 1

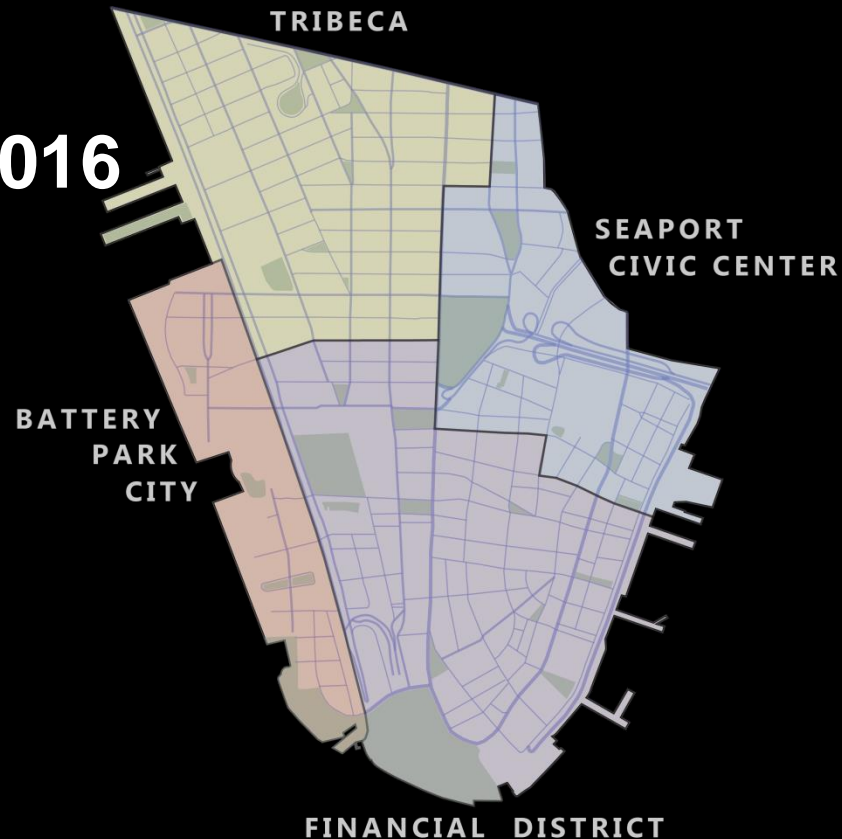
Monthly Board Meeting

Wednesday, December 21, 2016

6:00 PM

Southbridge Towers Community Room
90 Beekman Street

Anthony Notaro, Chairperson
Noah Pfefferblit, District Manager
Lucy Acevedo, Community Coordinator
Diana Switaj, Director of Planning and Land Use
Michael Levine, Planning Consultant



CB1's OFFICE CONTACT

Manhattan Community Board 1
1 Centre Street, Room 2202 North
New York, NY 10007
Tel: (212) 669-7970
Fax: (212) 669-7899

Website:

<http://www.nyc.gov/html/mancb1/html/home/home.shtml>

Email: Man01@cb.nyc.gov



Manhattan Community Board 1

Public Session

Comments by members of the public (6 PM to 7 PM)

(Please limit to 1-2 minutes per speaker to allow everyone to voice their opinions)



Manhattan Community Board 1

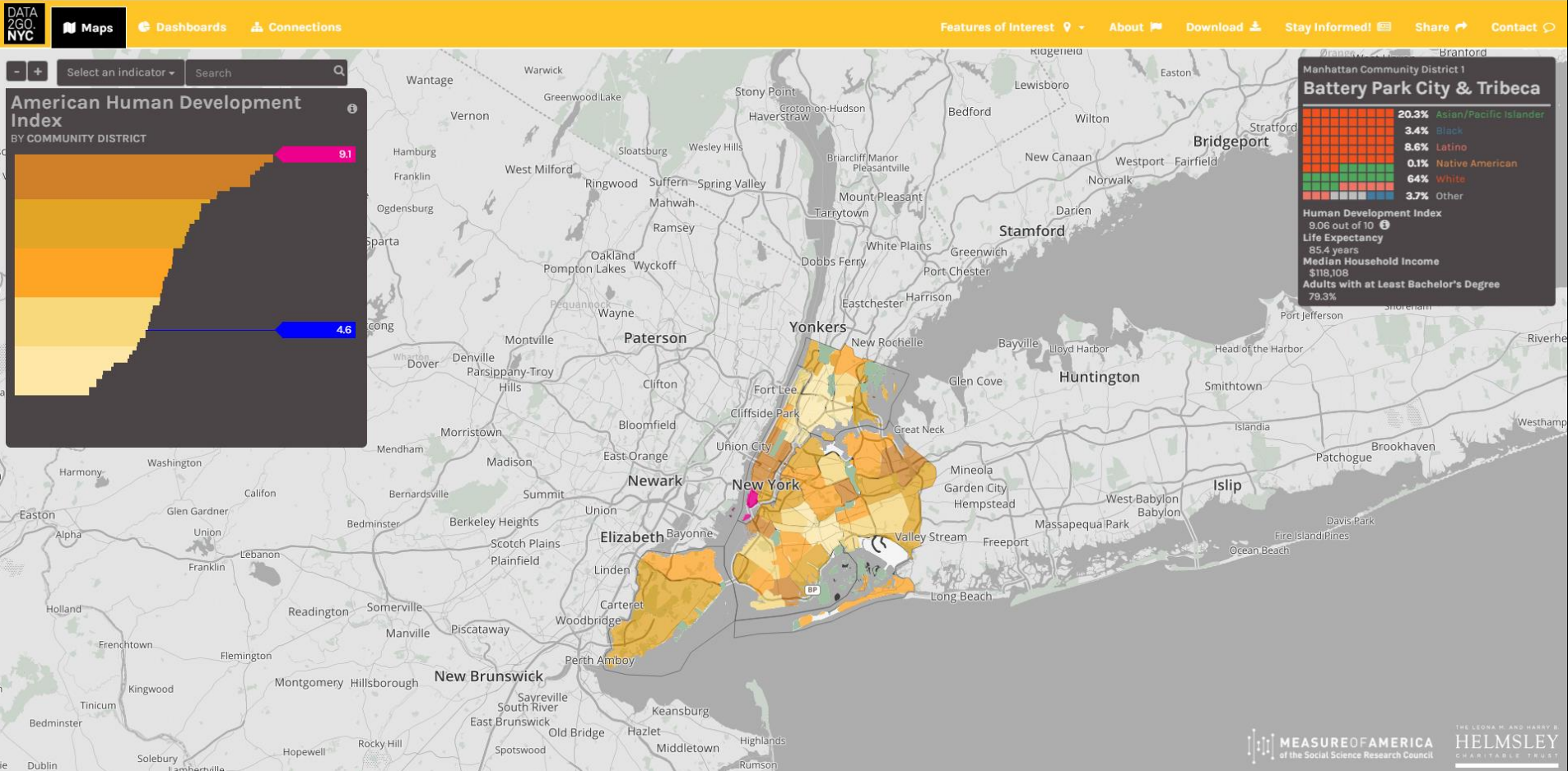
Business Session

- Adoption of November 2016 minutes
- District Manager's Report – N. Pfefferblit
- Chairperson's Report – A. Notaro

Manhattan Community Board 1 Chair Report - December

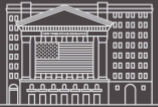
- [Data2Go](#) Training
 - More Information to be more proactive
 - Livability Index aid
- [Lower Manhattan Coastal Resiliency](#)
 - Continued work with Mayor's Office of Recovery and Resiliency
 - Task Force meeting (December 5, 2016)
- NY Presbyterian/Downtown Hospital Advisory Committee
- Downtown Alliance Board Meeting

Manhattan Community Board 1

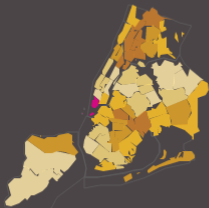


Manhattan Community Board 1

MH Community District 1 Battery Park City & Tribeca



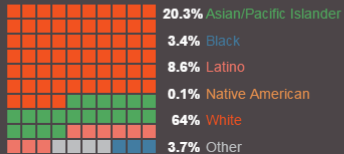
A multitude of NYC attractions are located within Community District 1, including the World Trade Center, Wall Street, the South Street Seaport, and Liberty Island. More than six in ten residents are white, and the median household income of nearly \$120,000 is the highest in the city. Seventy-nine percent of adult residents hold bachelor's degrees, more than double the city average of 35.9 percent. District 1 has the lowest percentage of residents with diabetes, 3 percent, and the highest life expectancy, 85.4 years. The HD Index score is 9.06 out of 10, the highest well-being score in the city.



Add Module + Change Category

Race/Ethnicity

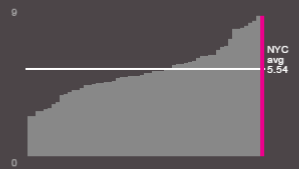
Majority White



AHDI

9.06

American Human Development Index (a composite well-being measure made up of health, education, and income indicators)



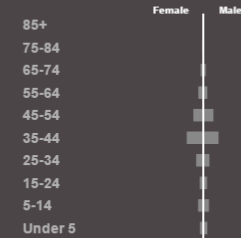
School Enrollment

75.8%

School Enrollment (% of population ages 3 to 24 in school)



Age and Gender - Totals



Earnings

\$80,606

Median Personal Earnings



Disconnected Youth

4.2%

Disconnected Youth (% ages 16 to 24 not in school and not working)



Employment

3.3%

Unemployed (% ages 16 and older)

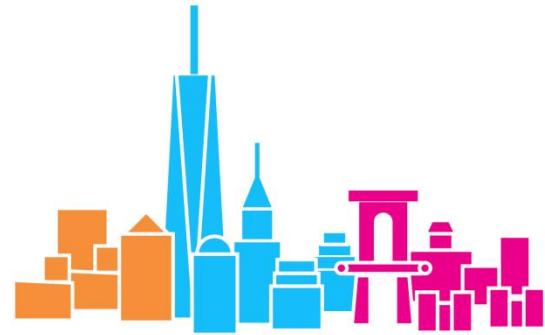


School Enrollment

78.5%

Preschool Enrollment (% of 3- and 4-year olds)





lower manhattan
COASTAL RESILIENCY

**CB1 TASK FORCE UPDATE
DECEMBER 5, 2016**

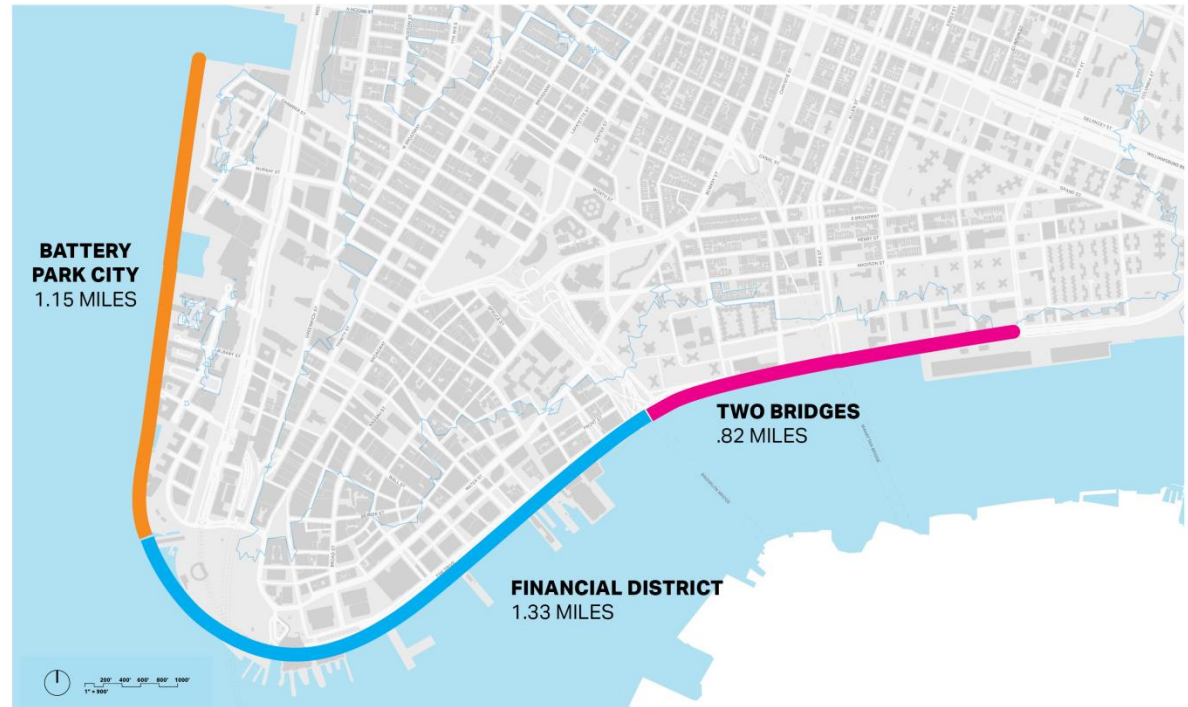
PROJECT OVERVIEW

Purpose of Study

- Develop long-term strategy and feasible concept design for all of Lower Manhattan
- Prioritize project concepts toward implementation and conduct advanced planning when possible
- Engage with community on core design principles and priorities

Study Funding:

- \$7.25M CDBG-DR
(\$3.75M GOSR; \$3.5M NYC)



IMPLEMENTATION FUNDING IN PLACE



LOWER MANHATTAN COASTAL RESILIENCY

EAST SIDE COASTAL RESILIENCY FUNDING SECURED:

\$335 million (CDBG-DR)
\$170 million (City Capital) Project
Budget : \$505 million

LOWER MANHATTAN COASTAL RESILIENCY IMPLEMENTATION

TWO BRIDGES

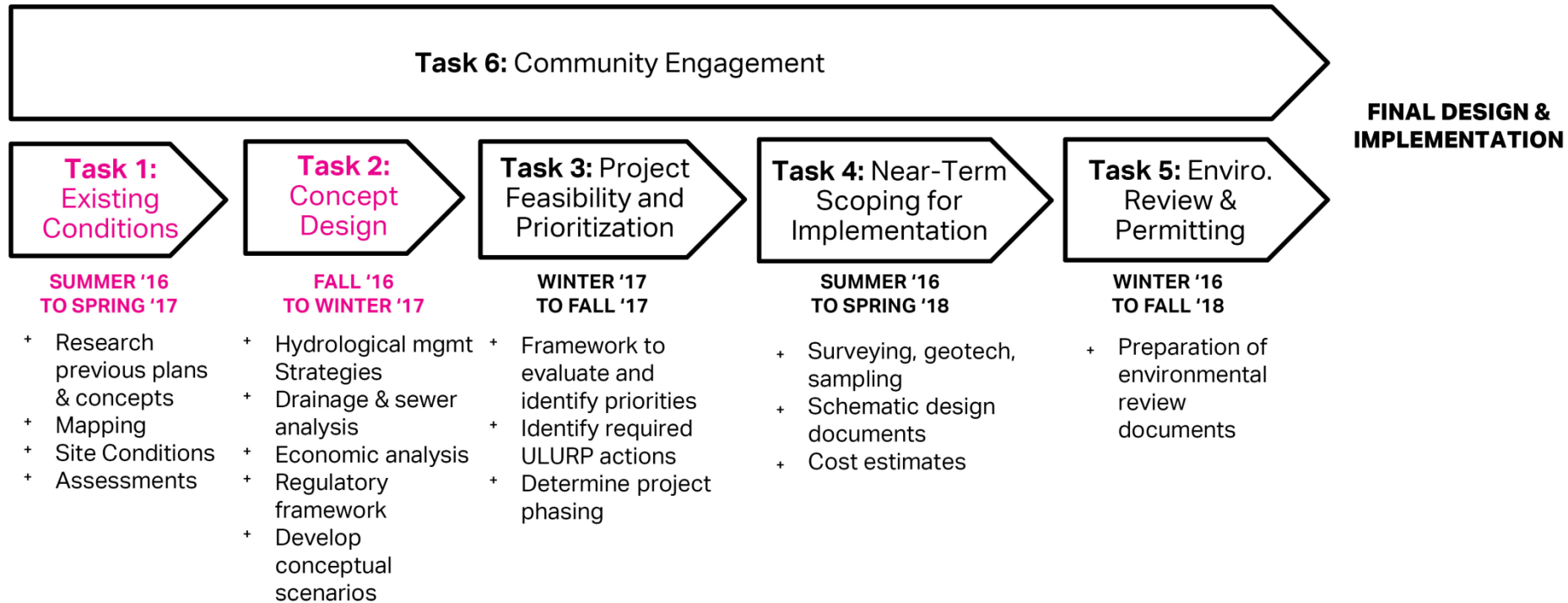
FUNDING SECURED:

\$176 million (CDBG-NDR)
\$27 million (City Capital)
Project Budget: \$230 million

MANHATTAN TIP FUNDING SECURED

- \$100 million (City Capital)
+\$8 million for The Battery
Project Budget: TBD

PROJECT PROCESS



CONCERNS AND PREFERENCES ABOUT INFRASTRUCTURE TYPES

KEY PREFERENCES

- Overall, similar results for BPC and FiDi
- Maintain existing waterfront views and access
- Prioritize infrastructure that has a natural look
- Ensure that resiliency infrastructure is accessible for all ages and residents

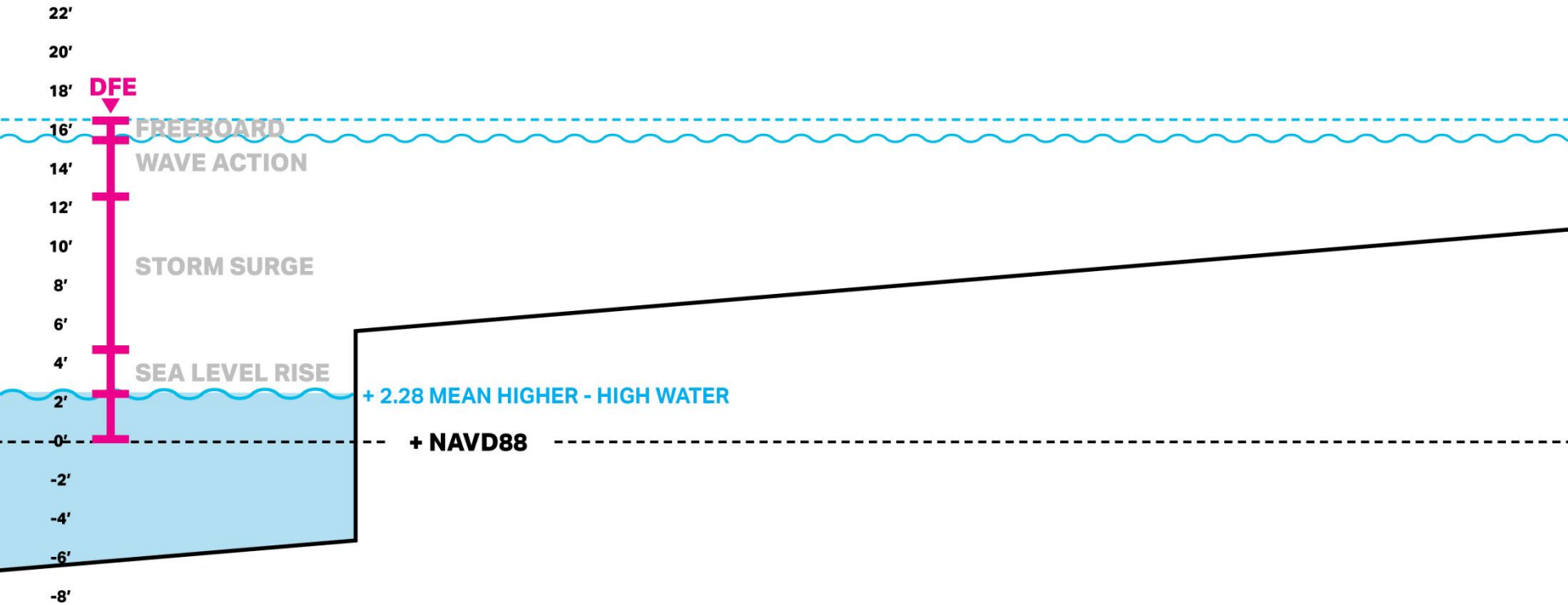
KEY CONCERNS

- Blocking the waterfront (BPC - slightly stronger concern)
- High costs
- High maintenance requirements (FiDi - slightly stronger concern)
- Not enough space for berms
- Reliance on manual deployment in times of crisis and the associated risks (FiDi - slightly stronger concern)



DESIGN FLOOD ELEVATION - COMPONENTS

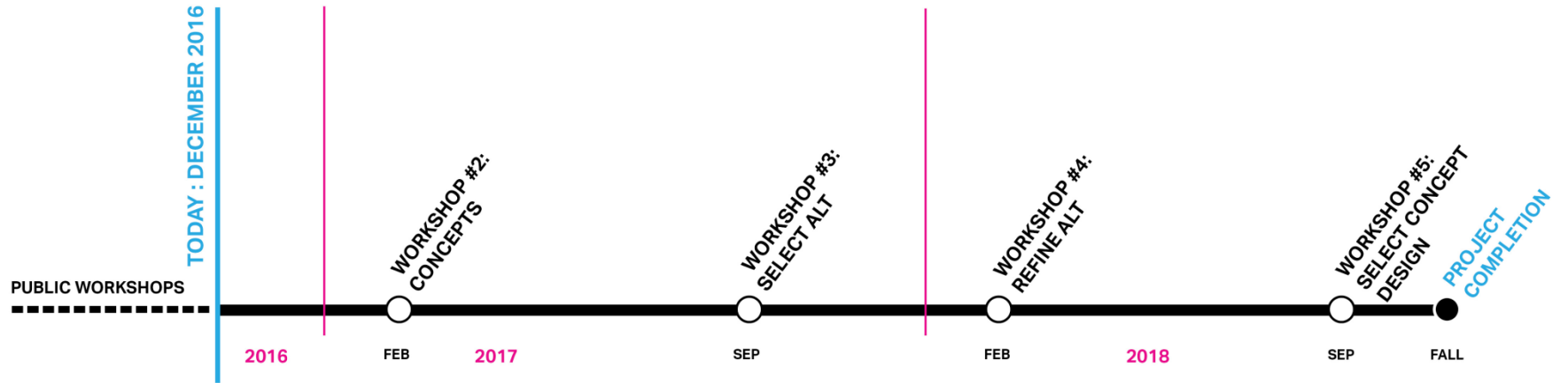
*NOT TIED TO SPECIFIC GEOGRAPHY



NEXT STEPS

- Private property owner interviews and stakeholder outreach : **completed end of 2016**
- Continue detailed surveying : **completed early 2017**
 - Utilities
 - Existing Elevations
 - Key Infrastructure
- Develop conceptual scenarios : **completed early 2017**
- Coastal modeling & interior drainage : **completed spring 2017**
- Project feasibility : **completed spring 2017**
- Identify alignments : **completed fall 2017**

FUTURE MILESTONES



Manhattan Community Board 1 Chair Report - December

- [Data2Go](#) Training
 - More Information to be more proactive
 - Livability Index aid
- [Lower Manhattan Coastal Resiliency](#)
 - Continued work with Mayor's Office of Recovery and Resiliency
 - Task Force meeting (December 5, 2016)
- NY Presbyterian/Downtown Hospital Advisory Committee
- Downtown Alliance Board Meeting

Manhattan Community Board 1 Chair Report - December

- Wolfgang incident and CB1 response
- Governor's Island temporary café RFP for Liggett Terrace
- Working Group for Edgar Street (Trinity School) Student Plaza
- Changes to Street Activity Permit reporting and renewals
- Brooklyn Bridge Beach

Tribeca Citizen



Lindsay Means @lindsaymeans · 5h

Last night, as 2 of my friends and I were walking past @Wolfgangssteak Tribeca, 3 men smoking outside shouted "GRAB THEM BY THEIR PUSSIES"

6 retweets 2 likes



Lindsay Means @lindsaymeans · 5h

We confronted the men and asked them to repeat themselves. They did, several times. We started yelling at them @Wolfgangssteak

1 like



Lindsay Means

@lindsaymeans



Follow

Restaurant employees came outside, also told us to calm down, said they were "good guys" and to let them enjoy their meal @Wolfgangssteak



WOLFGANGS STEAKHOUSE @Wolfgangssteak · 9h

.@LindseyMeans we're sorry for how you were treated by our guest.

1 retweet 2 likes



WOLFGANGS STEAKHOUSE @Wolfgangssteak · 9h

We've reviewed what occurred Friday night at our TriBeCa location and spent today internally addressing how it was handled by our team.

1 retweet 2 likes



WOLFGANGS STEAKHOUSE @Wolfgangssteak · 9h

We do not condone harassment of any kind.

Inappropriate behavior is not a reflection of who we are.

2 retweets 2 likes

Manhattan Community Board 1 Chair Report - December

- Wolfgang incident and CB1 response
- Governor's Island temporary café RFP for Liggett Terrace
- Working Group for Edgar Street (Trinity School) Student Plaza
- Changes to Street Activity Permit reporting and renewals
- Brooklyn Bridge Beach

Manhattan Community Board 1



Governor's Island Temporary Café RFP for Liggett Terrace

Manhattan Community Board 1 Chair Report - December

- Wolfgang incident and CB1 response
- Governor's Island temporary café RFP for Liggett Terrace
- Working Group for Edgar Street (Trinity School) Student Plaza
- Changes to Street Activity Permit reporting and renewals
- Brooklyn Bridge Beach

Manhattan Community Board 1 Chair Report - December

- Lower Manhattan Development Corporation
 - State of the Mission
 - 3.5% vs 5% saving over \$100,000,000 of HUD funds
 - Site 5
- Peck Slip Park/Jerry Driscoll Walk
- Pier 40
- 137 Centre Street
- Holiday party
- Robert Douglas Passing and Bridge naming

Jerry Driscoll Walk



Manhattan Community Board 1



Pier 40

Manhattan Community Board 1 Chair Report - December

- Lower Manhattan Development Corporation
 - State of the Mission
 - 3.5% vs 5% saving over \$100,000,000 of HUD funds
 - Site 5
- Peck Slip Park/Jerry Driscoll Walk
- Pier 40
- 137 Centre Street
- Holiday party
- Robert Douglas Passing and Bridge naming

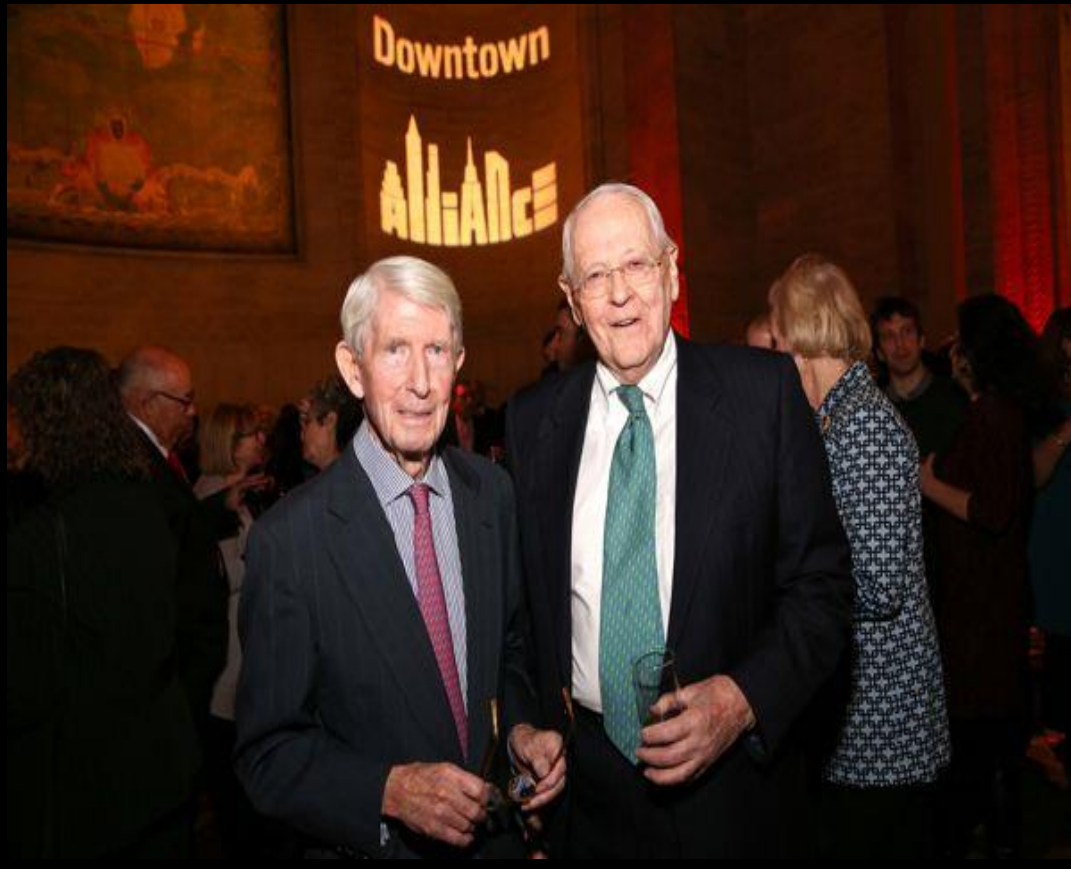


Mayor Bill de Blasio and First Lady Chirlane McCray host a Holiday Reception for Community Board Members at Gracie Mansion on December 10, 2016



Mayor Bill de Blasio and First Lady Chirlane McCray host a Holiday Reception for Community Board Members at Gracie Mansion on December 17, 2016

Manhattan Community Board 1

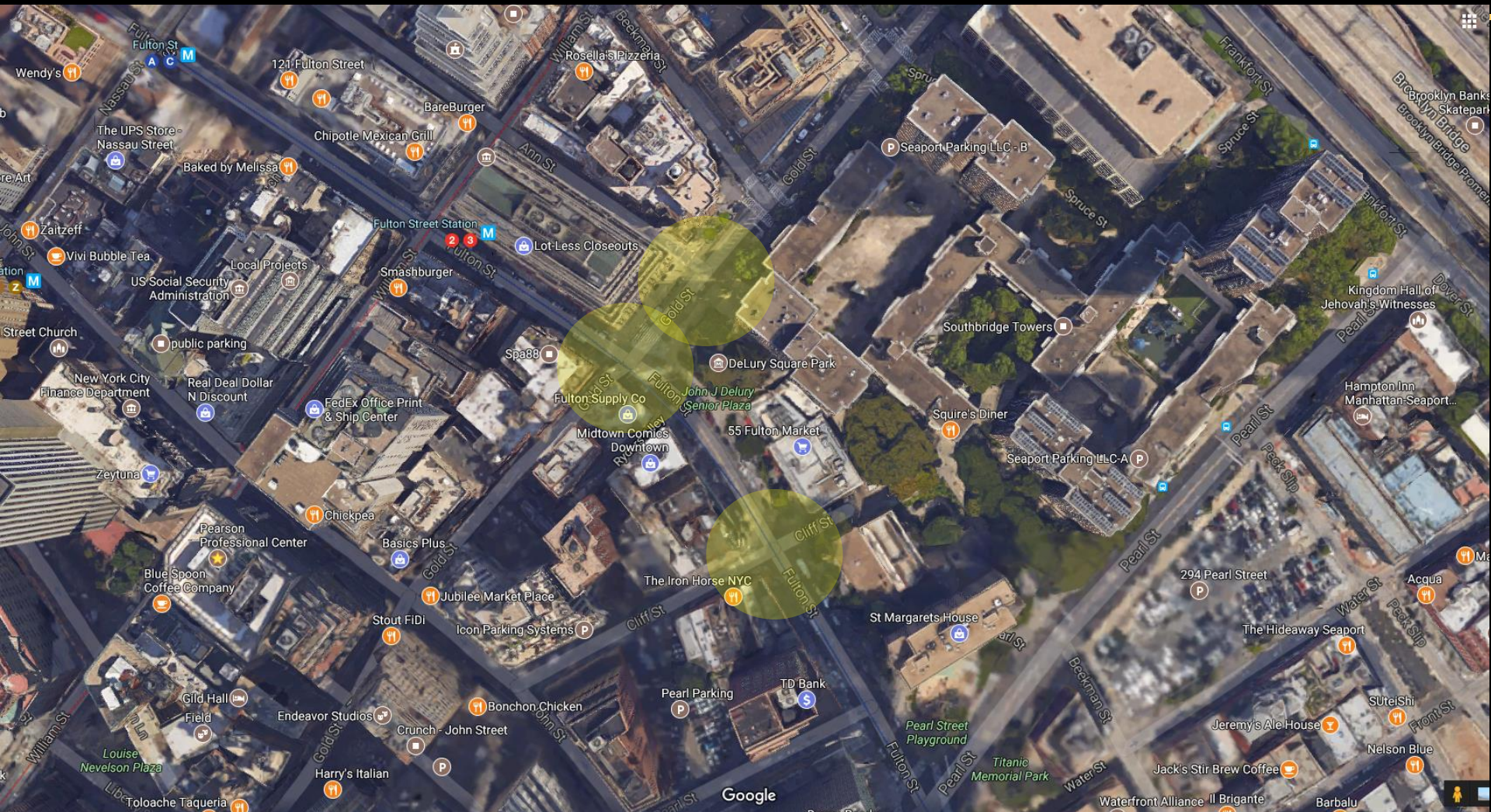


Robert Douglas Passing and Bridge naming

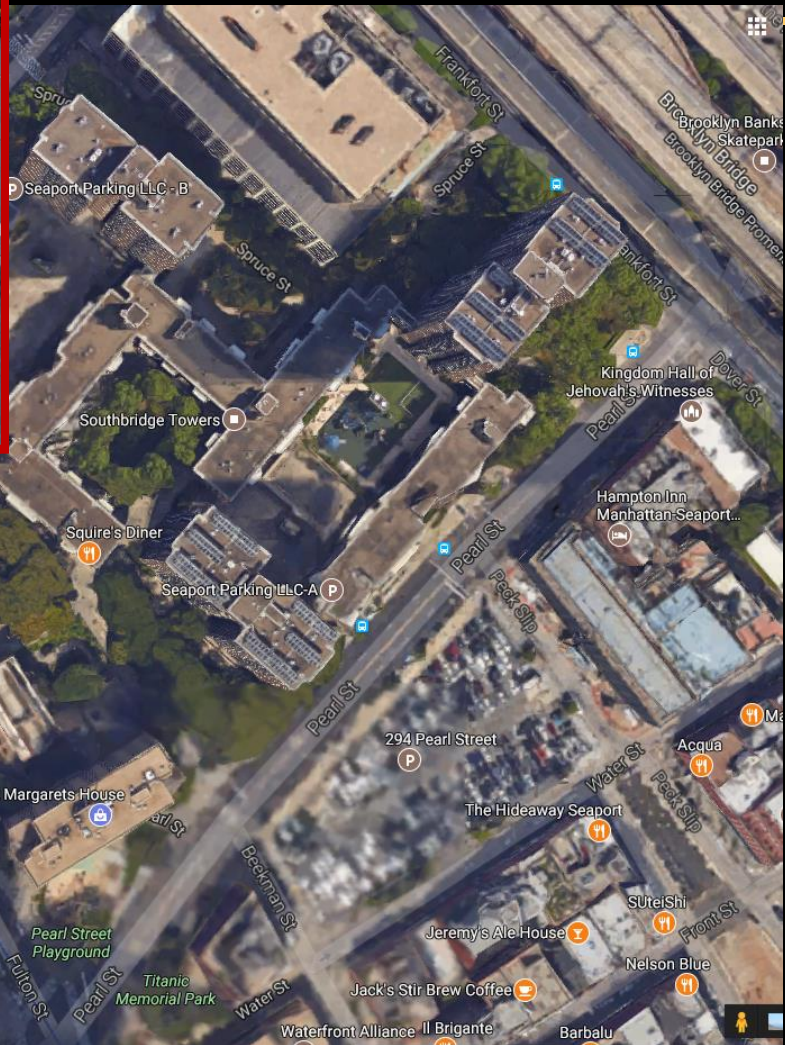
Manhattan Community Board 1 Committee Reports

Seaport/Civic Center – M. Pasanella

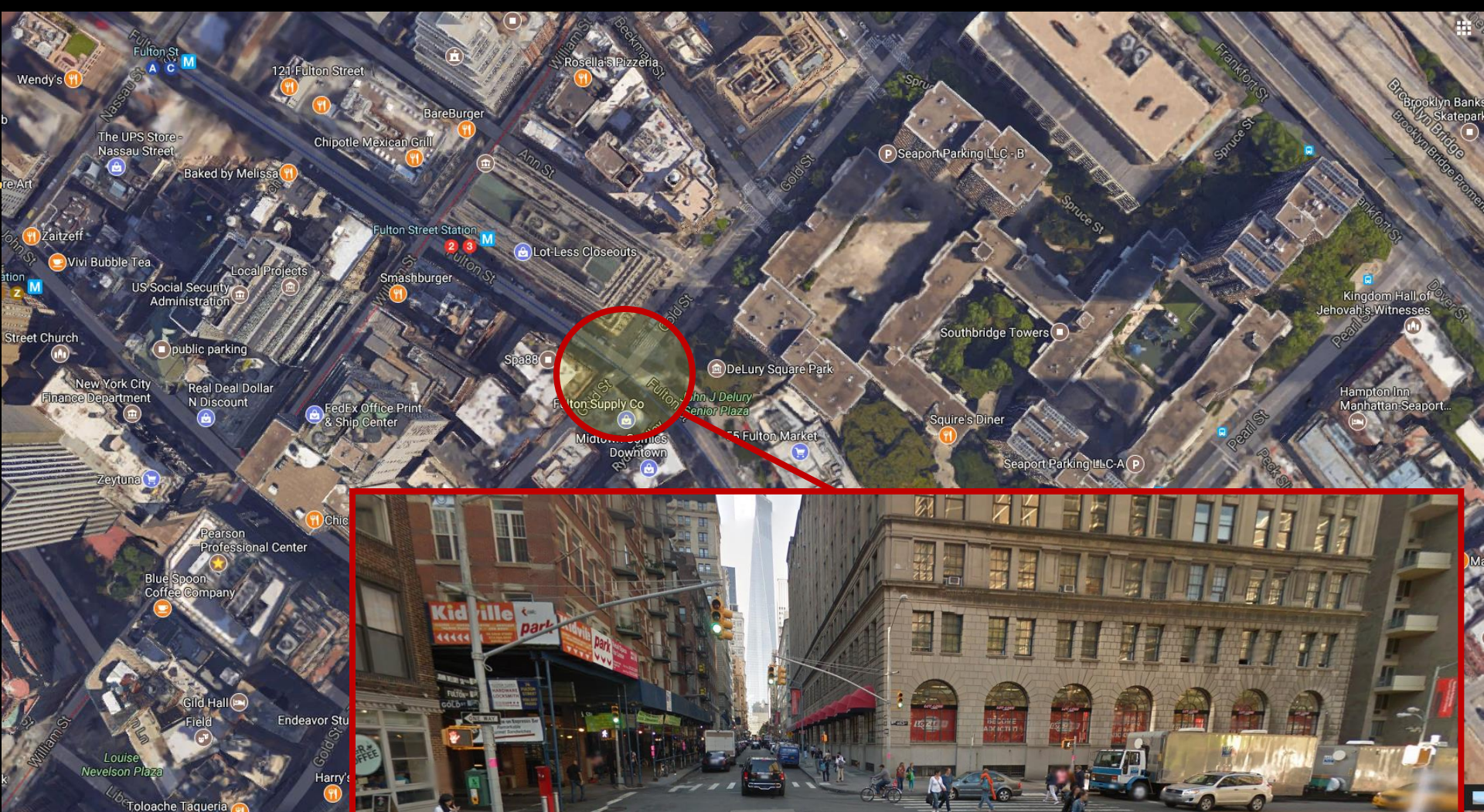
- 1) Seaport Intersection Safety – Report
- 2) Howard Hughes Corporation Update – Report



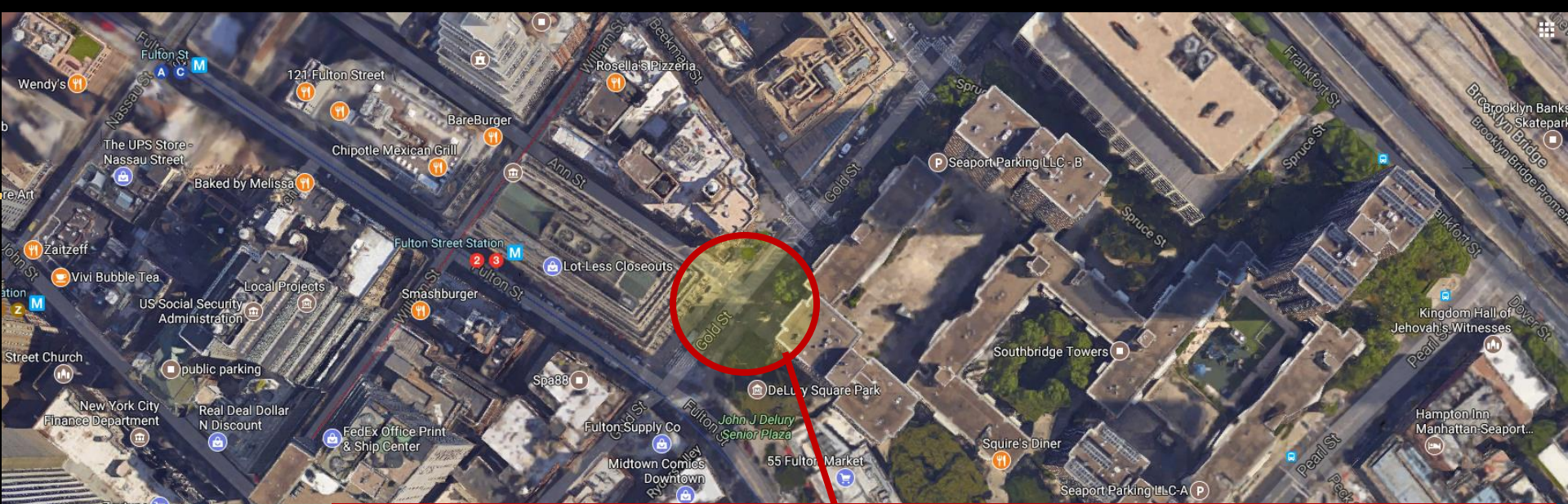
Seaport Intersection Safety



Fulton Street & Cliff Street



Fulton Street & Gold Street



Gold Street & Ann Street



Seaport
District
NYC

Community Board 1 Update

December 20, 2016

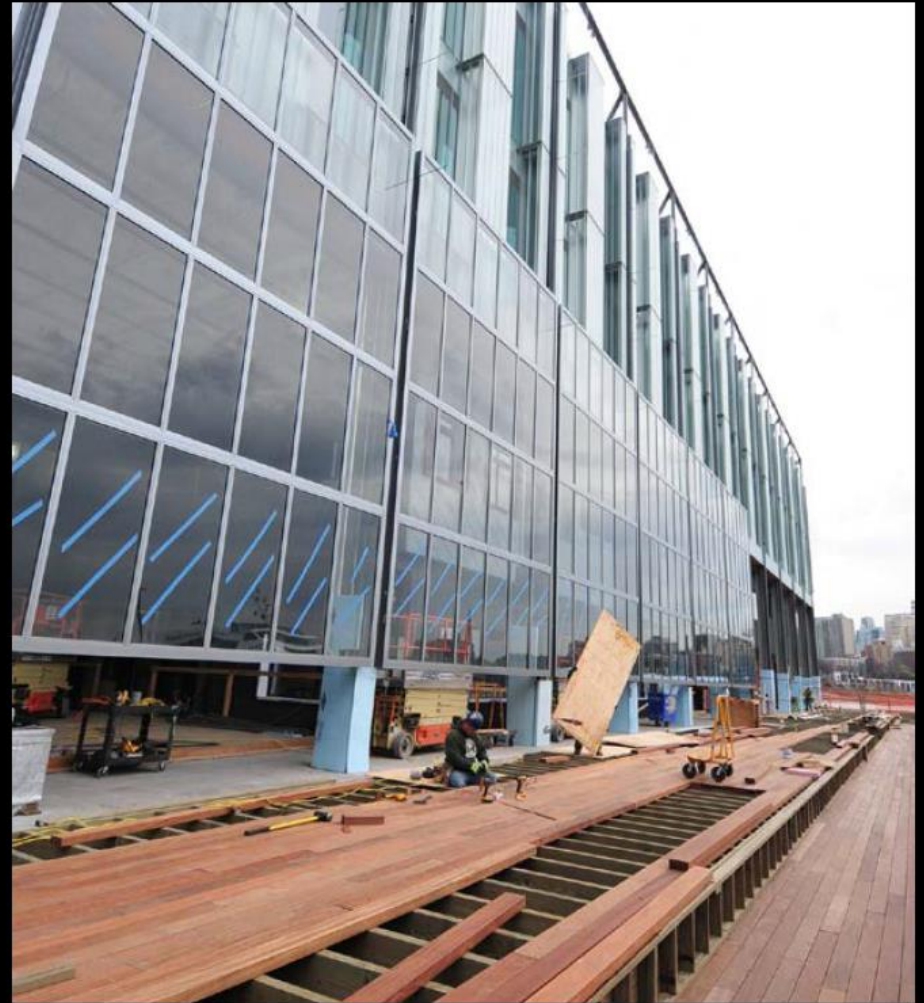
Howard Hughes.



1. INTRODUCTION –
SAUL SCHERL
EXECUTIVE VICE PRESIDENT
THE HOWARD HUGHES CORPORATION

Pier 17 Construction Milestones

- Exterior Façade – North & South – Completed October 2016
- Link Building Demolished – October 2016
- Roof Pavers – 2nd Qtr 2017
- Building Exterior Walkways – 2nd Qtr 2017
- West Façade – Scheduled to commence 1st Qtr 2017





Fulton Market Building Milestones

- Building construction completed October 2016
- Smorgasburg successfully activated in Summer/Fall with 5 local vendors
- iPic Theaters, including Tuck Room bar and restaurant, opened October 2016
- World Chess Championship activated on 3rd Floor in November 2016

Indoor Market

- Open daily 11:30am-5:30pm
- 100+ products from 40 brands
- 3 refrigerator units and display units added to feature more product
- Agritourism education area added
- The CSA farm share program served hundreds of local families

100+
Products from
40 locally
sourced brands



Outdoor Farmers Market

- Returns Spring, 2017
- 40+ producers featured, with a waiting list that has grown by 25% since last Fall, 2015.
- Every Sunday featured live music and kids crafts from local partners

40+

Unique farmers and
producers featured
during the season



Manhattan Community Board 1 Committee Reports

Quality of Life – P. Moore

- 1) Street Vending Modernization Act – Report
- 2) Sidewalk sheds – Reports
 - Collapse of sidewalk shed in Tribeca
 - Discussion of NY State Senate Bill S2404A regarding renewal of sidewalk shed permits

Manhattan Community Board 1 Committee Reports

Planning – D. Switaj

- 1) Lower Manhattan Coastal Resiliency – Report

Manhattan Community Board 1 Committee Reports

Tribeca – A. Blank

- 1) 95 West Broadway, application for liquor license for Tribeca Hotel LLC – Resolution
- 2) 313 Church Street, application for restaurant liquor license for A.G. Tribeca d/b/a Antique Garage Tribeca – Resolution
- 3) 109 West Broadway, application for liquor license for 109 West Battery Food & Wine LLC and Yves LLC – Resolution
- 4) 35 Lispenard Street, application for wine and beer license for Lispenard Fish LLC d/b/a Humble Fish – Resolution
- 5) Application for newsstand at the southwest corner of Warren and Greenwich Streets – Resolution
- 6) 452 Washington Street, application for liquor license for an entity to be formed by Tom Gialamboukis – Resolution
- 7) Holland Tunnel traffic impacts – Report
- 8) Pier 26 Preliminary Design – Report



Holland Tunnel Traffic Congestion

Presented by Luis Sanchez, Manhattan Borough Commissioner

December 14, 2016

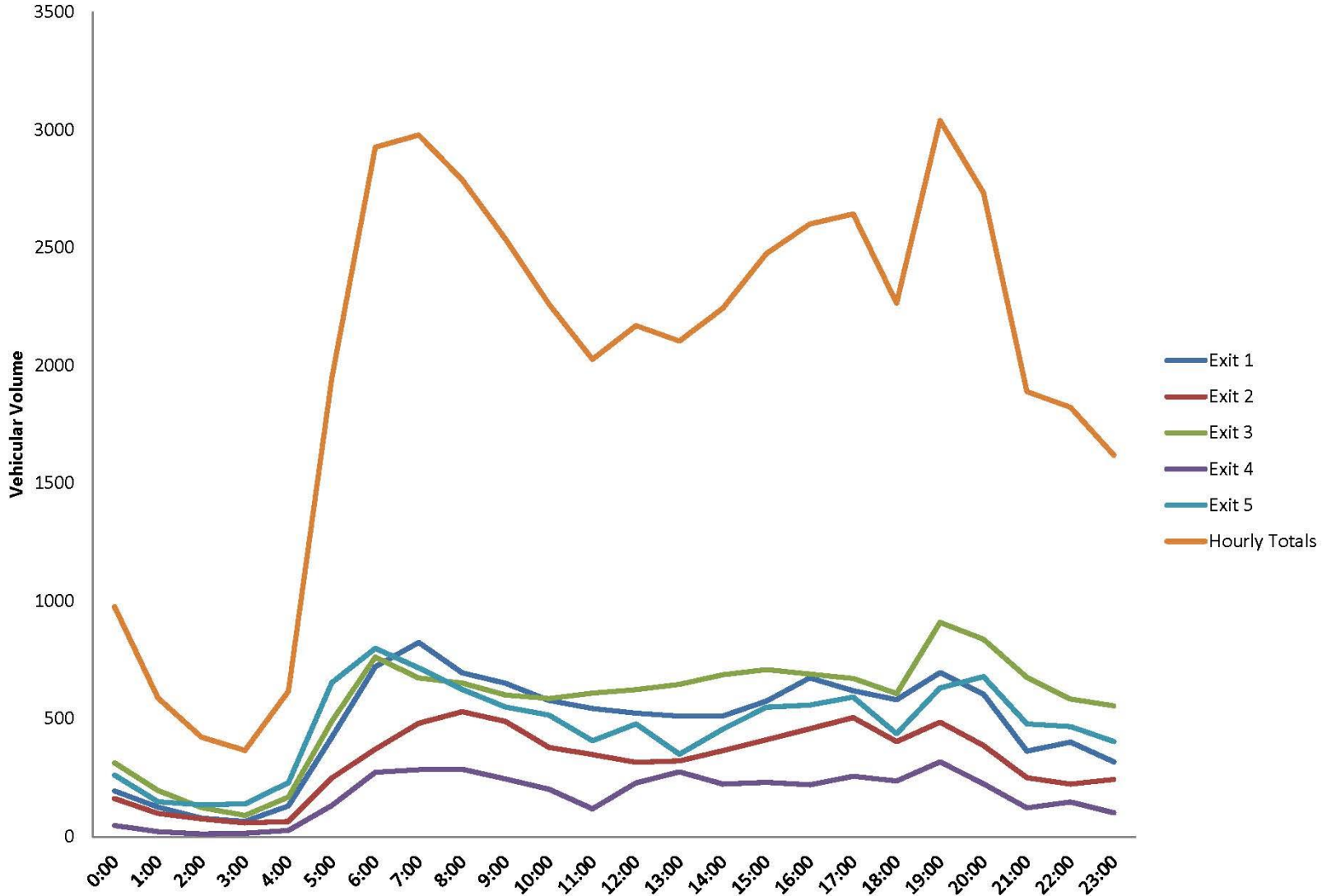
Manhattan Community Board 1

***All Data has been provided through the Courtesy of the Port Authority of New York and New Jersey**

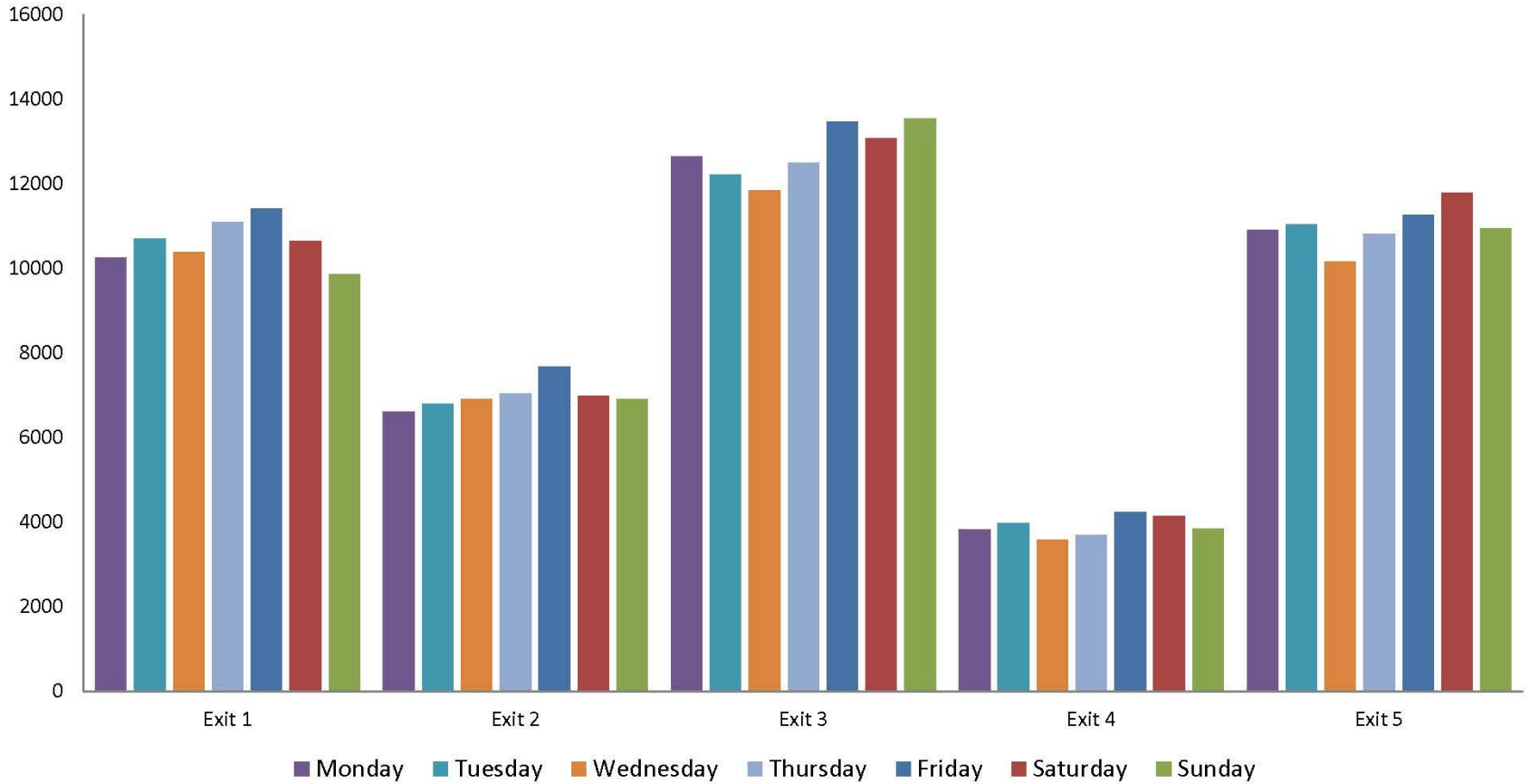


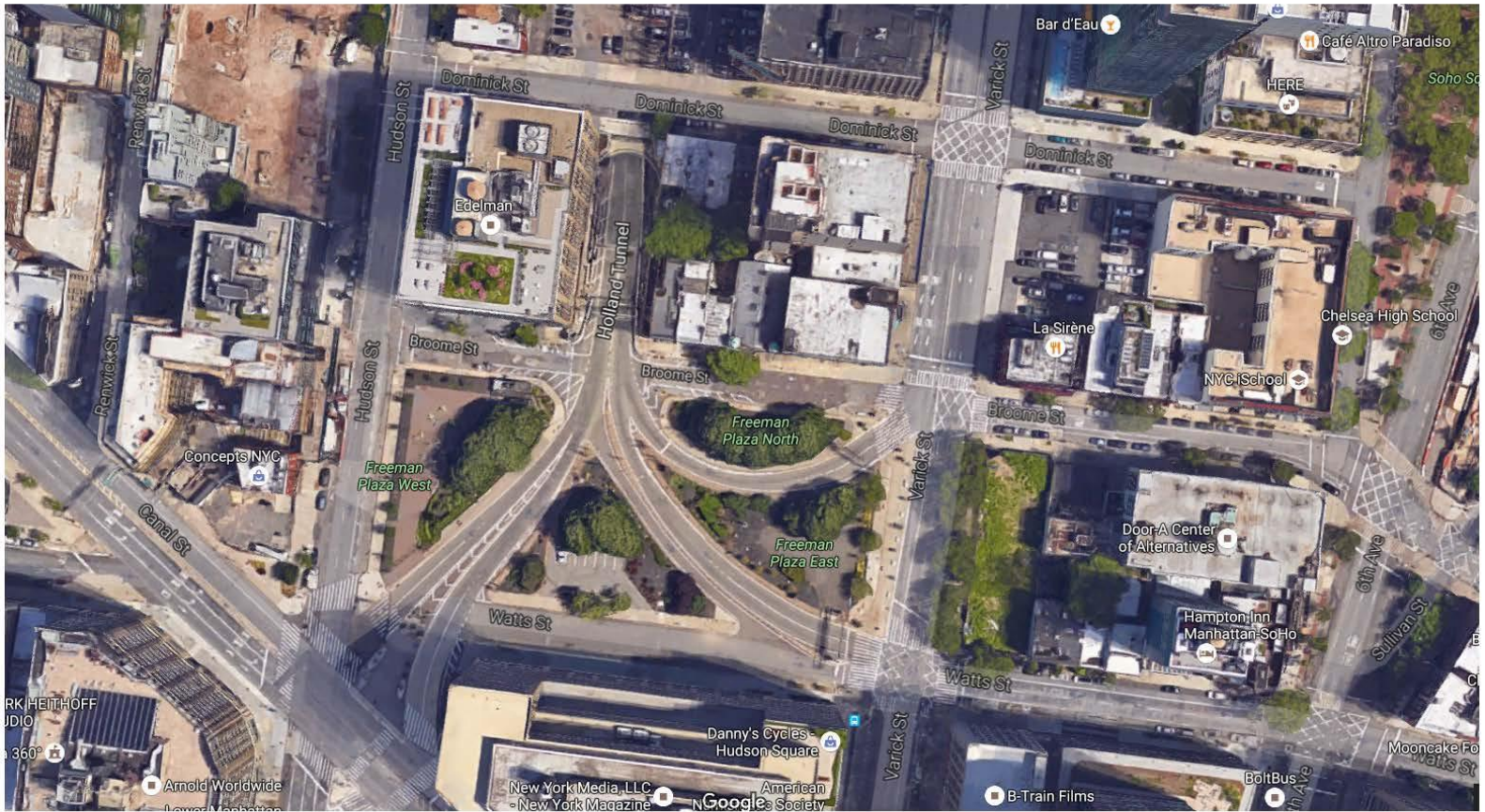


Friday – 24 Hr Traffic Volume

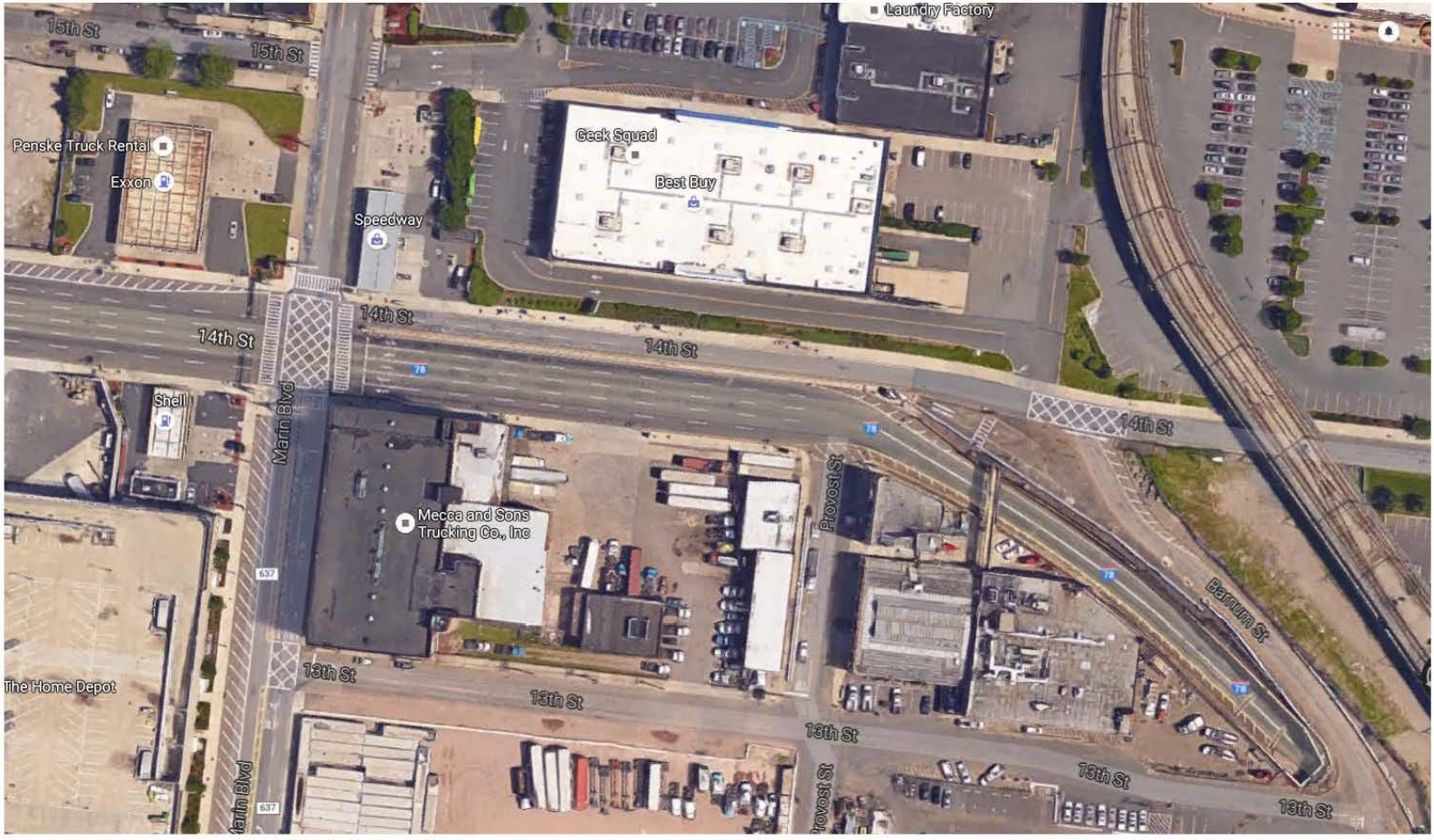


24 hr Traffic Volume by Exit/Day



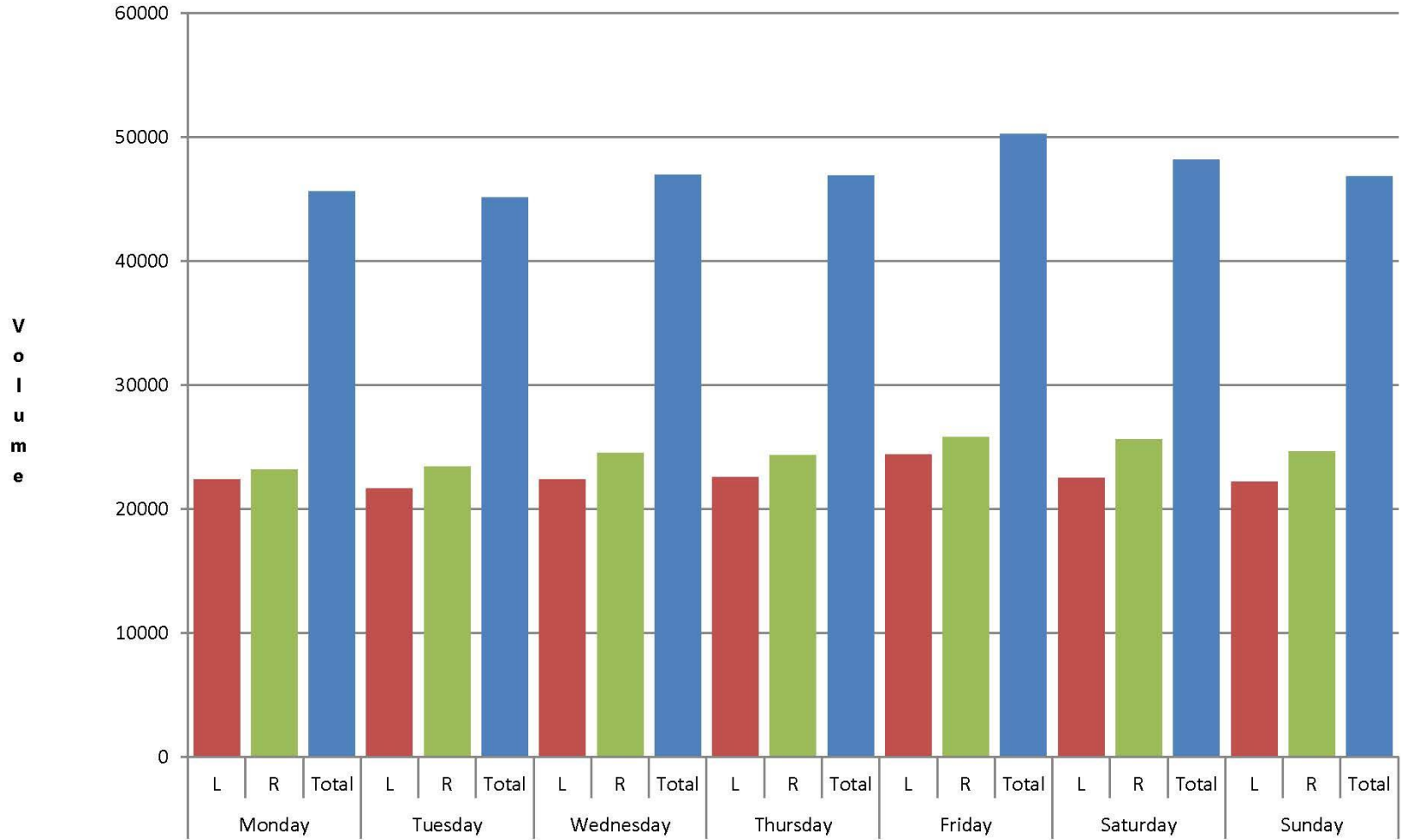


New York Approach

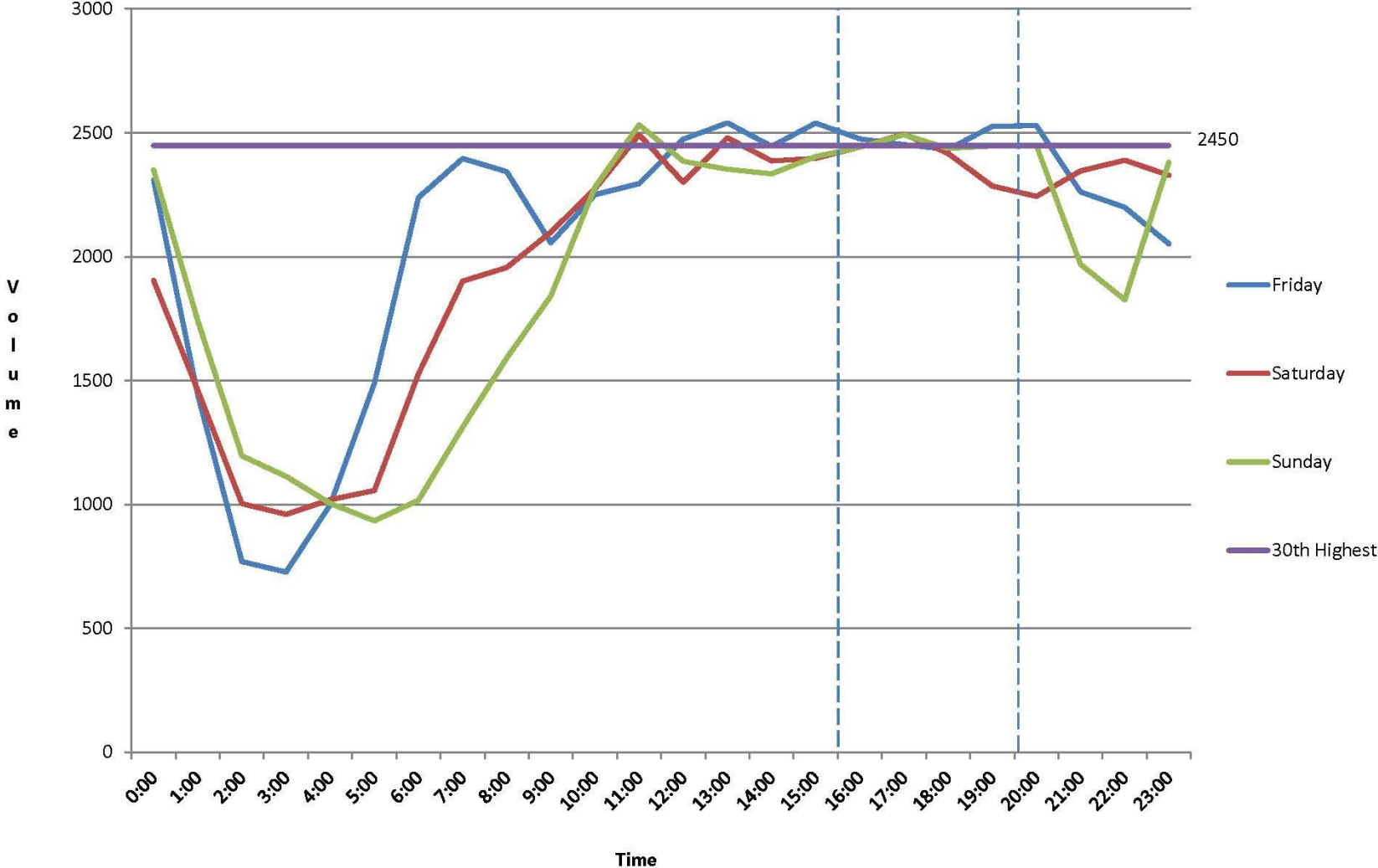


Jersey City Exit

Daily Traffic Volumes by Lane



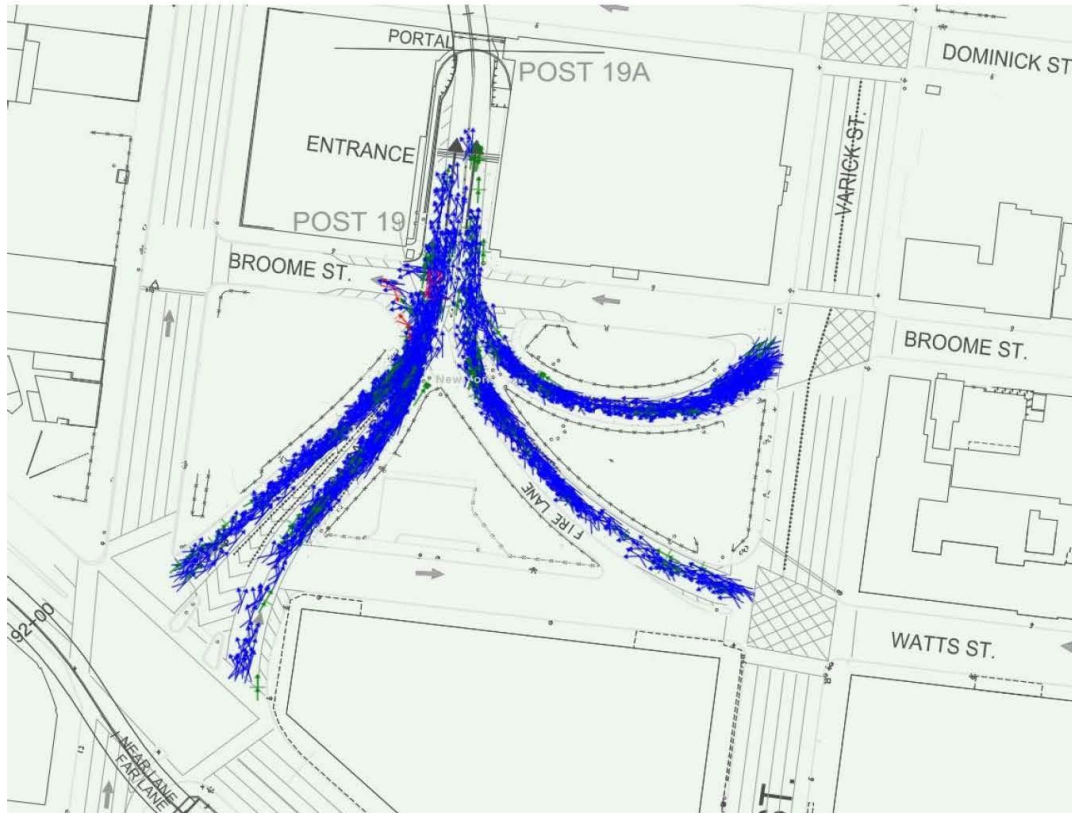
Weekend Traffic Volumes



Holland Tunnel Crashes

NY Portal Entrance and Approach Ramps

2011 – 2016 (up to Sept 6, 2016)



Legends for Crash Reporting & Analysis

-  Head On
-  Rear End
-  Sideswipe
-  Right Angle
-  Backing
-  Fixed Object
-  Non-Fixed Object
-  Encroachment
-  Pedestrian
-  Sideswipe Opposite
-  Damage While Parked
-  Cargo or Equipment loss or Shift
-  Overturn or Rollover
-  Left Turn or U turn
-  Parked Vehicle

| | Crashes by year | | | | | | |
|------------------------------|-----------------|------|------|------|------|------------------------------------|-------|
| | 2011 | 2012 | 2013 | 2014 | 2015 | 2016 (up to Sept 9 th) | Total |
| TOTAL | 203 | 212 | 185 | 189 | 191 | 124 | 1104 |
| Weekday PM PEAK 4-7pm | 39 | 56 | 50 | 48 | 50 | 23 | 266 |
| Weekend PM PEAK 4-7pm | 15 | 18 | 20 | 17 | 17 | 9 | 96 |

Pier 26 Concept Design



Manhattan Community Board 1

Committee Reports

Financial District – S. Cole

- 1) 110 Wall Street, application for restaurant wine, beer & cider license for TBD – Resolution
- 2) 59 Maiden Lane, application for restaurant/grocery/deli liquor license for Maiden Farm Inc. d/b/a Zeytuna – Resolution
- 3) 35 Cedar Street, application for a wine & beer license for BMD LLC – Resolution
- 4) 62 Stone Street, application for a wine & beer license for Bake My Day LLC – Resolution
- 5) 15 Stone Street, application for liquor license for Nebraska Steakhouse – Resolution
- 6) 195 Broadway, application for a restaurant liquor license for Nobu 195, LLP d/b/a Nobu
- 7) 12 John Street, application for restaurant wine, beer & cider license for Go Go Curry American Group LLC d/b/a Go Go Curry – Resolution
- 8) Hugh Carey/Battery Tunnel construction – Report
- 9) Governors Island – Report
- 10) Thames Street plaza – Report
- 11) Edgar Street Student Plaza – Report



Bridges and Tunnels

Hugh L. Carey Tunnel Restoration & Repair Projects

Cashless Tolling

Presentation to

Manhattan

**Community Board One
Financial District Committee**

December 7, 2016



Super Storm Sandy and HLC Tunnel

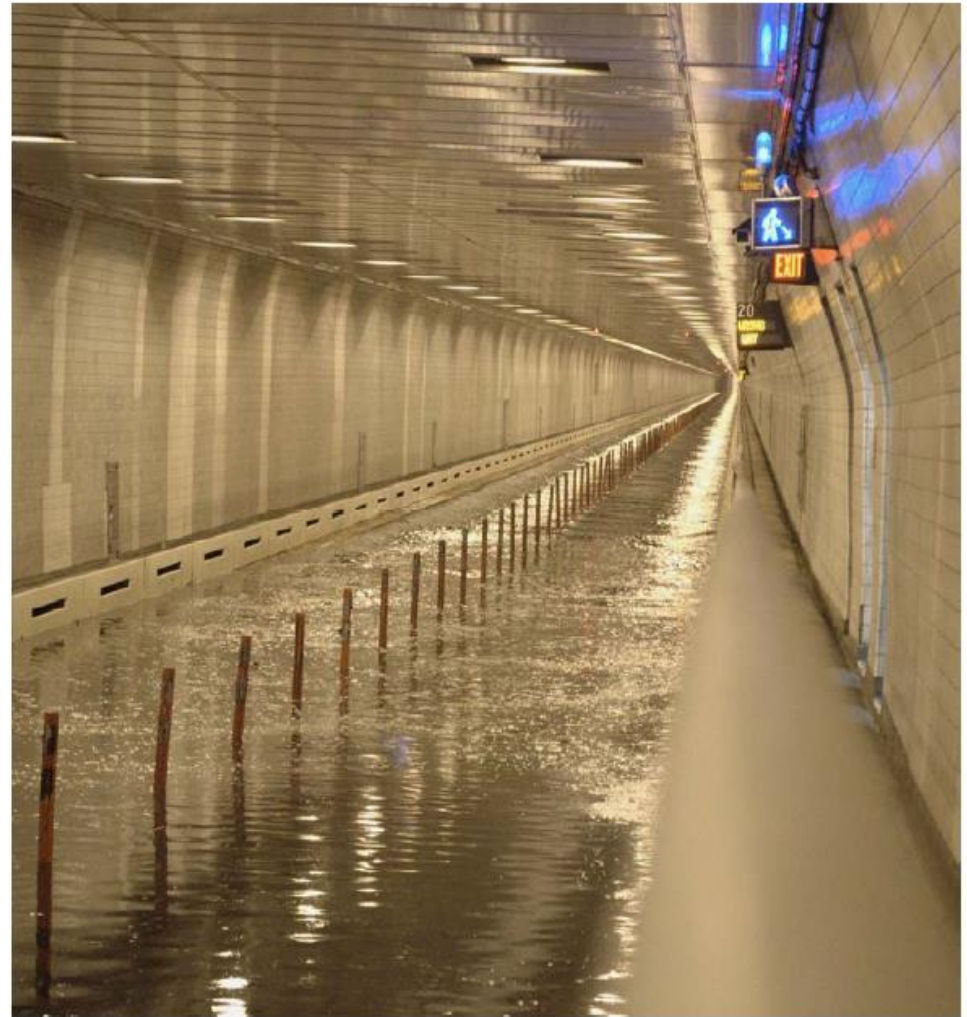
60+ million gallons of water flooded HLC in Oct 2012. Approximately 65% of tunnel was submerged

HLC Engineers, Maintainers, Operations, Technology staff worked 24/7 on essential repairs to reopen by Nov 12th 2012. Full operations with truck traffic restored Dec. 10th

Corrosive salt water damaged all major tunnel elements and critical systems

Immediate mitigations in place for recent and future storms. Long-term plans underway and in development

Urgent need for major restoration

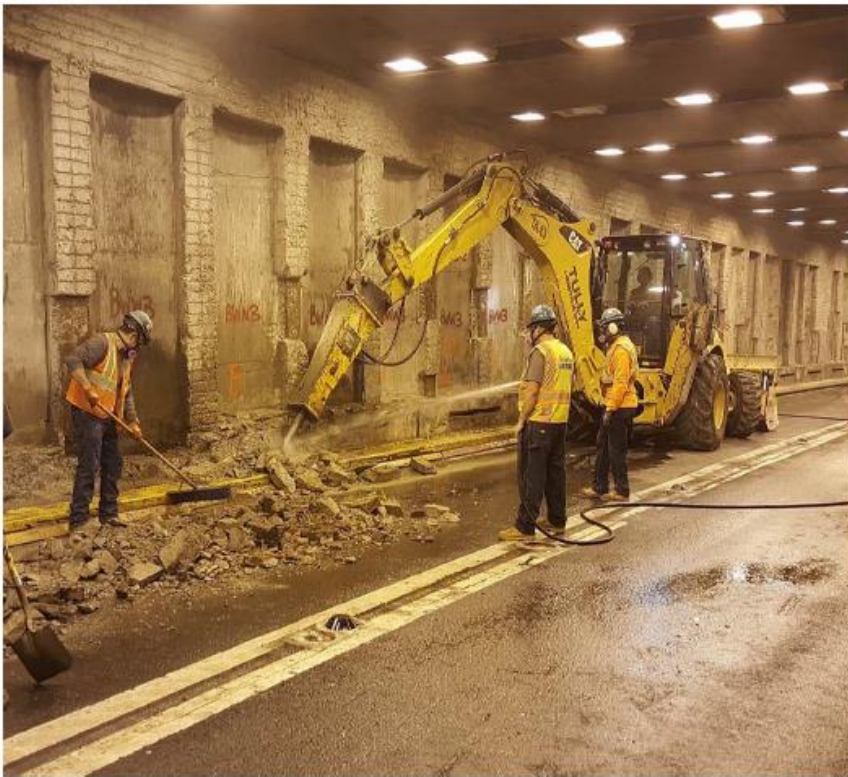


Water rising in West Tube of HLC Tunnel

The Accelerated Plan

Goal = Reduce overall duration of Sandy Restoration and Plaza repairs

- ✓ **Sandy Restoration and Plaza Rehabilitation** projects combined to maximize work production during tube closures and lessen traffic impact
- ✓ **Extended hours** of work in both West and East Tubes



HLC West Tube Sandy work



HLC Manhattan Plaza work during West Tube closure

Accelerated Schedule = Shorter Duration

| Location/Work Zone | Original Schedule | Accelerated Schedule |
|-----------------------------|-------------------|----------------------|
| Hugh L. Carey Tunnel | | |
| West Tube Completion | Late 2017 | Spring 2017 |
| East Tube Completion | Late 2018 | Spring 2018 |

Current Schedule:

- **West Tube** closures continue: Mondays through Thursdays, 8 pm to 5:30 am
- **Full weekend tube closures, either tube:** Fridays 8 pm through Mondays until 5:30 am
- **Bklyn & Manhattan Plaza Work:** Off-peak hours and during tube closures

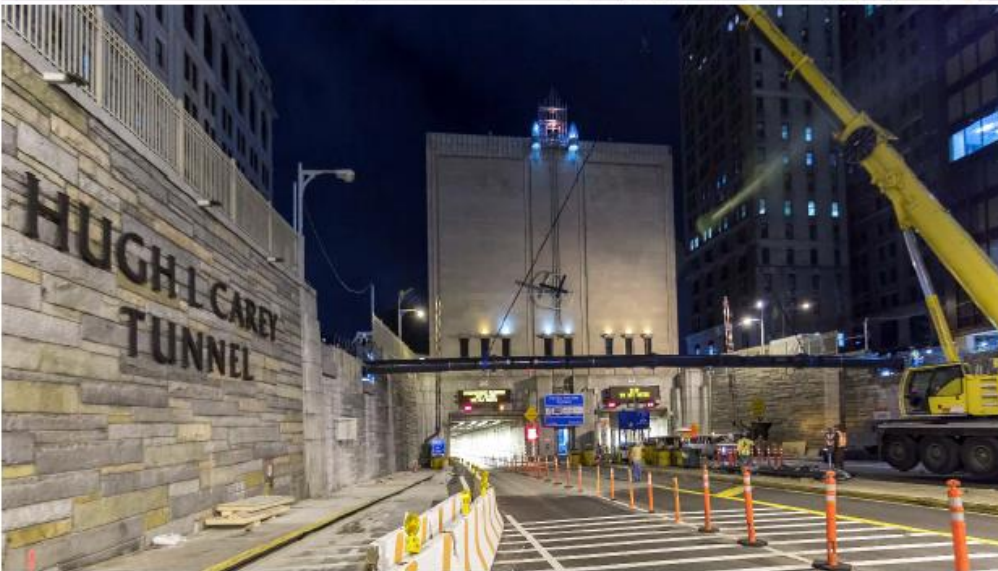
Cashless Tolling Coming to Hugh L. Carey Tunnel January 2017

What Is Cashless Toll Collection?



- Allows all drivers to proceed through plaza using any lane without stopping, eliminating traffic queues and reducing travel time
- No change for E-ZPass customers: toll payments made via tag-reads as in current system with E-ZPass tag mounted inside front windshield
- Owners of vehicles without E-ZPass are identified by license plate photo and billed the Cash Toll Rate via **Tolls by Mail**, administered for MTA Bridges and Tunnels by the E-ZPass New York Customer Service Center

HLC Tunnel Open Road Tolling Gantry Installation



Governors Island Update – Manhattan CB1 Financial District Committee



A lot has changed...

2015 – 33 acres of park open

2016 – 10 additional acres of park added

GOVERNORS ISLAND



GOVERNORS ISLAND



2016 Season Highlights

- ✓ Welcomed 585,000 visitors
- ✓ Over 80 organizations provided public programs
- ✓ Opened the Hills, 10 acres of new waterfront open space



Military Base

1800s-1996



Self-contained military installation, including a coast guard base of 3,500 residents

Seasonal Destination

2005-2016



Transformed into a seasonal cultural & recreational destination

Next Chapter

2017→



365-day activation as a vibrant hub for the innovation, learning, recreation and culture

What we're working on

Activation



What is the right mix of uses that will promote, encourage and sustain a 365 24/7 environment?

Diversity



How do we attract a population to the Island that reflects the NYC of today and tomorrow?

Sustainability



How can the Island be developed in an environmentally and financially sustainable manner?

Stewardship



How do we introduce new uses without disrupting the special character of the place?

Interim Use RFP

Manhattan Ferry Landing & Western Development Zone

- Up to three-year interim activation of two sites through the creation of new food and beverage, cultural, recreational and entertainment uses
- 1 acre and 8 acre site
- Responses due Friday, December 21, 2016



OpenHouseGI Permits

- Permit process now open online at GovIsland.com
- Program expected to have more applications than ever in 2017
- Open to organizations who propose programs free and open to the public, including exhibitions, performances, workshops, festivals and more
- Spaces in 30 historic houses and 40 acres of outdoor space available



Coming Soon

- Temporary Café RFP for Liggett Terrace (December 12, 2016)
- Food Vendor Permits (January 9, 2017)
- Ball Field Permits (January 9, 2017)



Tackling BMB Queuing Challenges

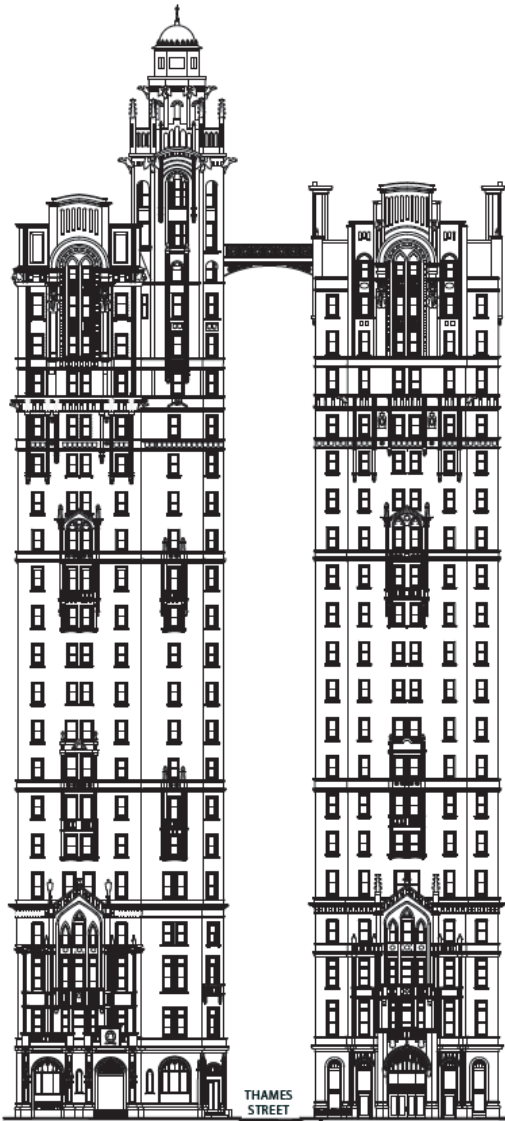
- “Gateway” to Governors Island is a high traffic, crowded & potentially unsafe area
- Narrow sidewalks adjacent to extension of East River Esplanade/cycling paths and Battery Tunnel traffic creates congested conditions for visitors waiting in line for the Ferry and users of the esplanade



Revisiting East River Waterfront Proposal

- Proposal: Move Battery Underpass Tunnel for plaza in front of BMB
- Create pedestrian plazas to better connect BMB to sidewalk and City
- Enables safer conditions for both cyclists and pedestrians continuing along East River Esplanade





111-115 BROADWAY
Presentation to CB1
DECEMBER 7, 2016

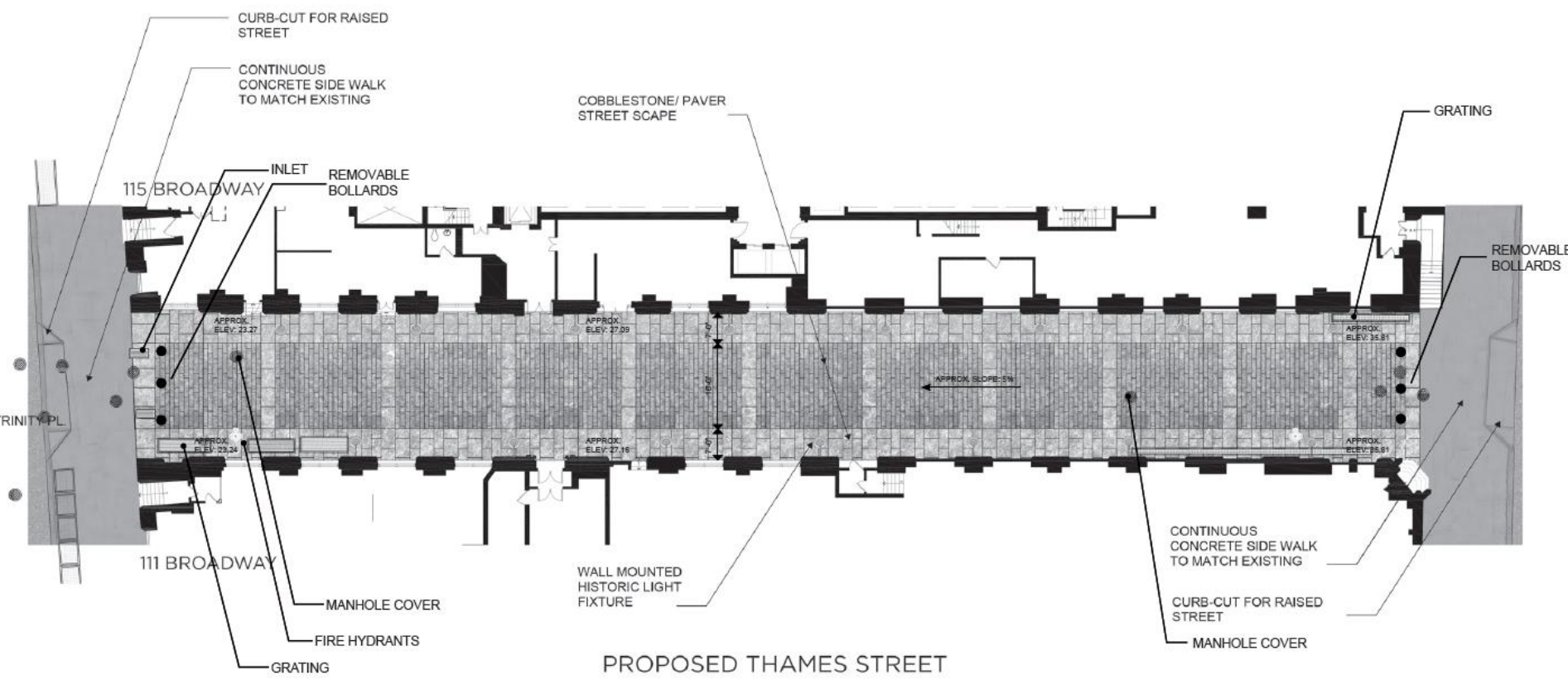


111 - 115 BROADWAY SITE AERIAL PLAN

NTS 



THAMES STREET EXISTING CONDITION

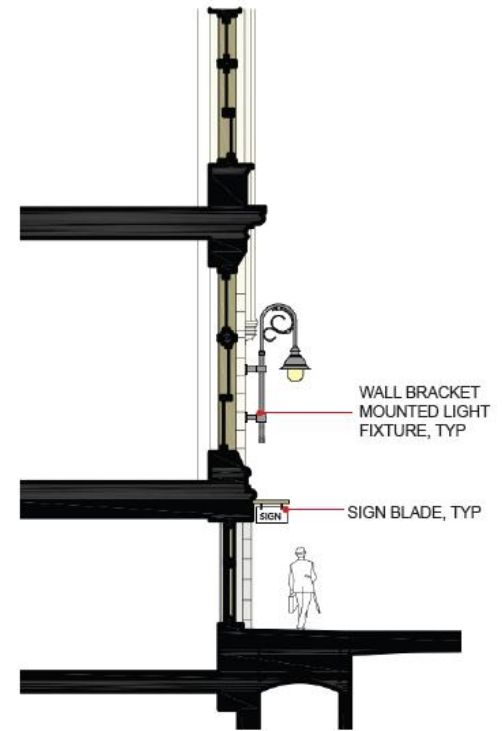




WALL BRACKET
MOUNTED LIGHT
FIXTURE, TYP

SIGN BLADE, TYP

ENLARGED ELEVATION



WALL BRACKET
MOUNTED LIGHT
FIXTURE, TYP

SIGN
SIGN BLADE, TYP

ENLARGED SECTION



PROPOSED THAMES STREET LOOKING EAST

PRELIMINARY SCHEDULE

- April 2017: File Plaza Program application with NYCDOT.
- End of Summer 2017: Anticipate formal approval from NYCDOT.
- Fall 2017 - Spring 2018: Obtain additional approvals (Utilities, PDC, LPC) and hold Community Board design workshop(s).
- Spring 2018: Construction anticipated to begin on Thames Street.
- Fall 2018: Thames Street plaza construction anticipated to be completed.

Manhattan Community Board 1 Committee Reports

Landmarks – R. Byrom

- 1) 77 Reade Street, application for modification of parapet railing – Resolution
- 2) 139 Centre Street, request for evaluation – Resolution
- 3) 121 Chambers Street, application for approval of reconstruction of two street storefront infill, removal of Reade Street fire escape, and a non-visible roof addition – Report

77 Reade Street



KEY PLAN (SITE)



VIEW 1: FROM SW INTERSECTION OF CHURCH ST. & CHAMBERS ST.




VIEW 2: FROM CHAMBERS ST. (SOUTH SIDE)



VIEW 3: FROM CHAMBERS ST. (SOUTH SIDE, ZOOMED-IN)



VIEW 4: FROM CHAMBERS ST. (EAST SIDE, ZOOMED-IN)

| | | | | | |
|--|-------------|----------|--|--|-------------------------------|
|  | PROJECT NO: | 16-101 | PROJECT: AGOSTINO & FLAVIA CAMPI UNIT PH D-E 77 READE ST., NY, NY | SHEET TITLE: KEY PLAN AND STREET-VIEW PHOTOS | DRAWING NUMBER: SKA-000.00 |
| | SCALE: | AS SHOWN | | | |
| | DATE: | 12.05.16 | | | |

139 Centre Street



121 Chambers Street



CHAMBERS ST TAX PHOTO



CHAMBERS ST DESIGNATION PHOTO



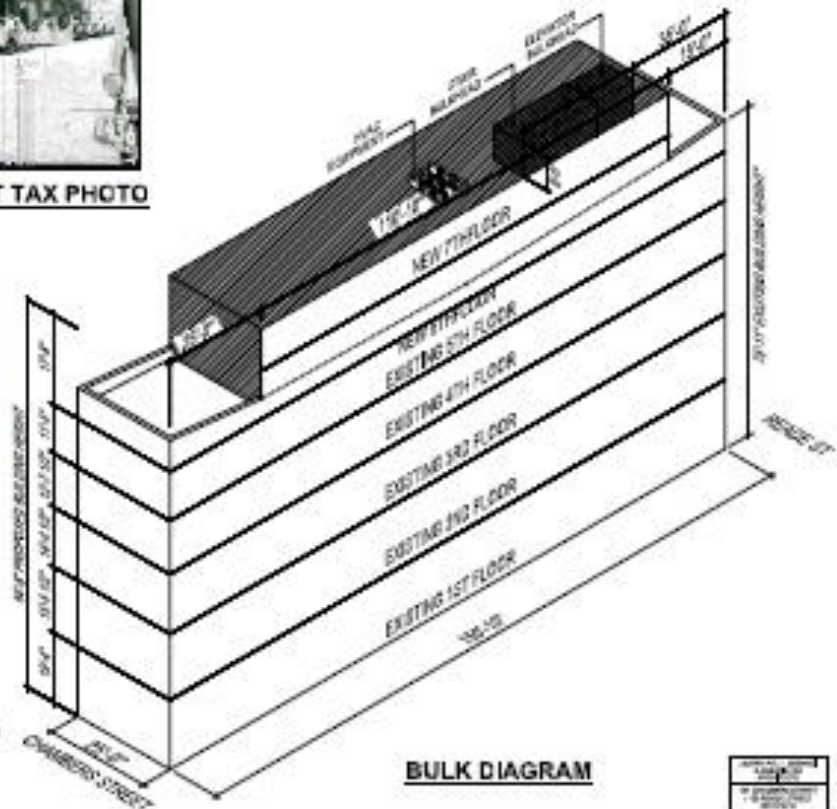
READE ST TAX PHOTO



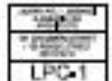
HISTORIC DISTRICT MAP



1931 AERIAL PHOTO



BULK DIAGRAM



SCOPE OF WORK

1. RESTORE CHAMBERS STREET GASTRONOMY STOREFRONT ELEMENTS BASED ON DESIGNATION BOARD EXISTING NEW-HISTORIC STOREFRONT LAYOUT AND EXISTING HISTORIC READE STREET HISTORIC GASTRONOMY STOREFRONT ELEMENT.
2. NEW WOOD STOREFRONT INSTALL AT ALL GROUND FLOOR BAYS ON CHAMBERS STREET.
3. RESTORE EXISTING GASTRONOMY STOREFRONT ON READE STREET NEW WOOD STOREFRONT INSTALL AT GROUND FLOOR ON READE STREET. INCLUDING SHOW WINDOW TO EARLY 20TH CENTURY GONDOLA.
4. NEW ADA ACCESS RAMP AND STOPS FOR RESIDENTIAL AND COMMERCIAL READE STREET BUILDING ENTRY.
5. MULTI-SOURCE WORK APPROXIMATE TO PARADE AND PARADE W. 4. 3' 0" W.
6. NEW DOWNSPOUTS 4TH AND 5TH FLOOR, ROOF SLOPES AND MECHANICAL EQUIPMENT.

Manhattan Community Board 1 Committee Reports

Youth & Education – P. Hovitz

- 1) Additional Security Cameras at the Battery Park City Ball Fields Terrace – Report
- 2) New York-Presbyterian/Lower Manhattan Hospital Pediatric Services – Report
- 3) Manhattan Youth Financial Assistance Programs & Free Programs – Report
- 4) 42 Trinity Place Build-out – Report
- 5) Edgar Street Student Plaza – Report
- 6) Meeting with Paola Ruiz on Community Issues – Report
- 7) School Overcrowding Task Force meeting – Report
- 8) Church Street School Financial Status – Report

74 Trinity Place



**EAST FAÇADE
BASE**



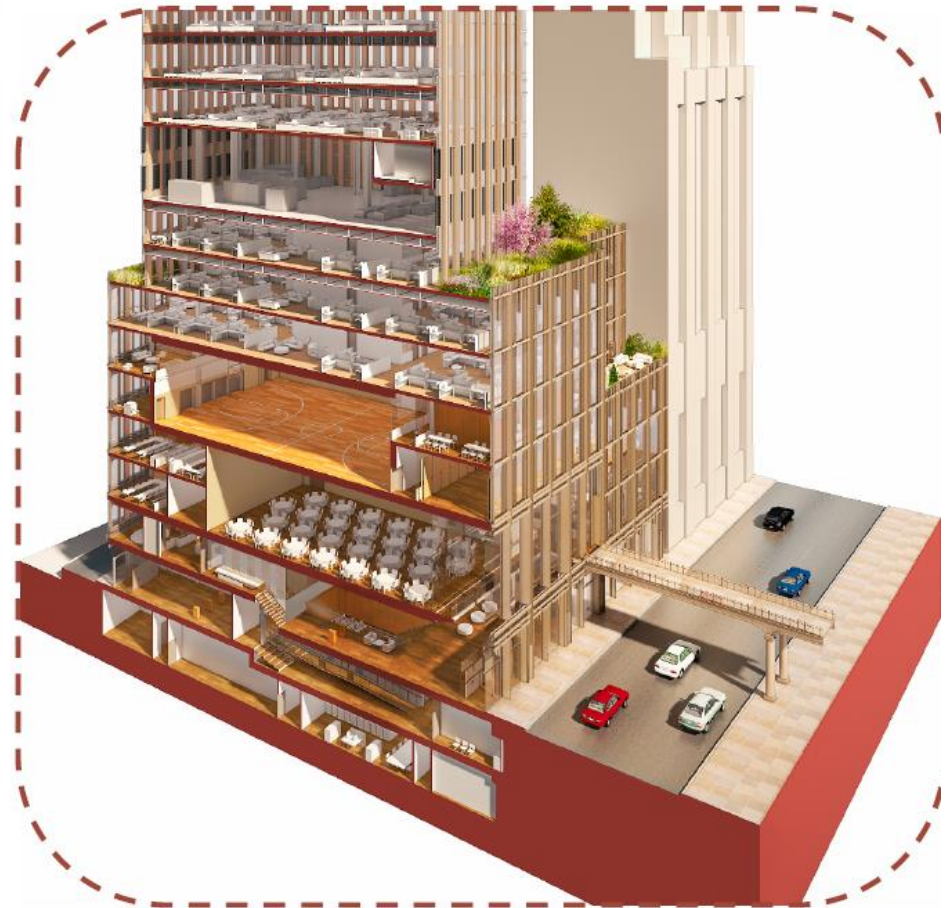
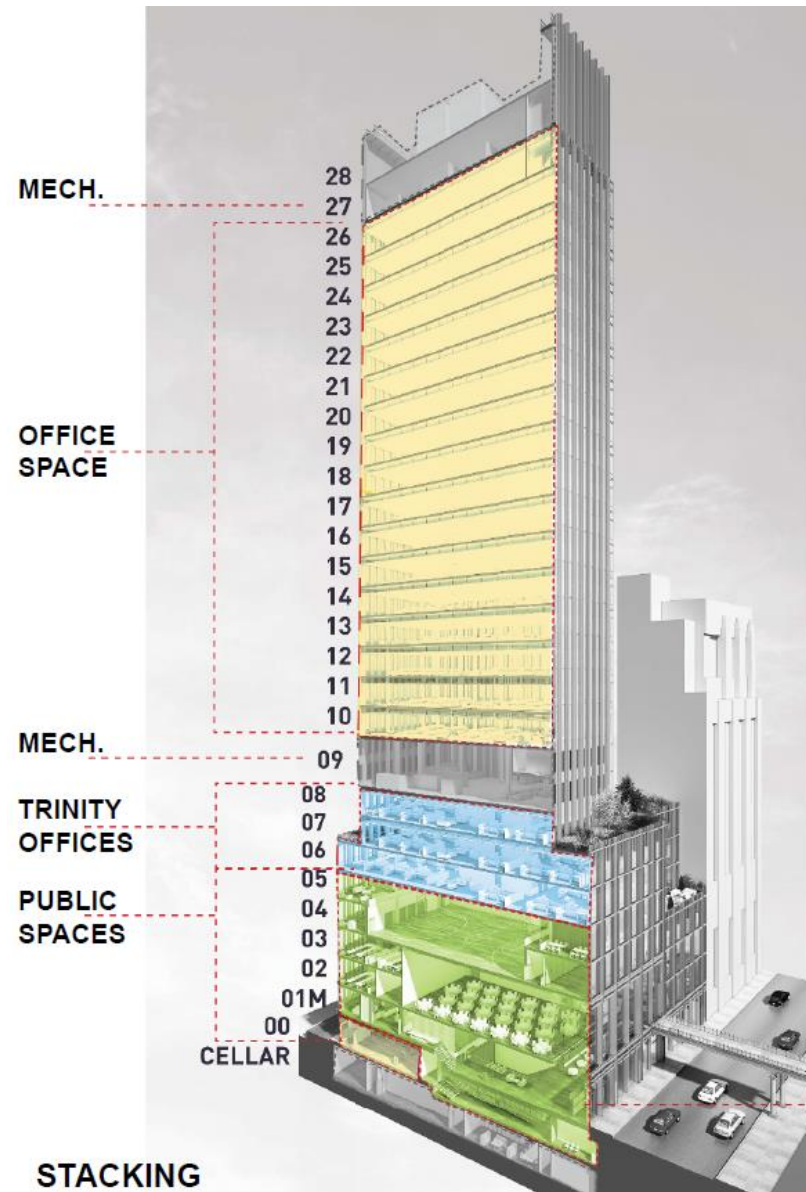
Trinity
74 TRINITY PLACE

**74
TRINITY
PLACE**

STEPHEN B. JACOBS GROUP
Executive Architect

Pelli Clarke Pelli Architects
Design Architect

74 Trinity Place



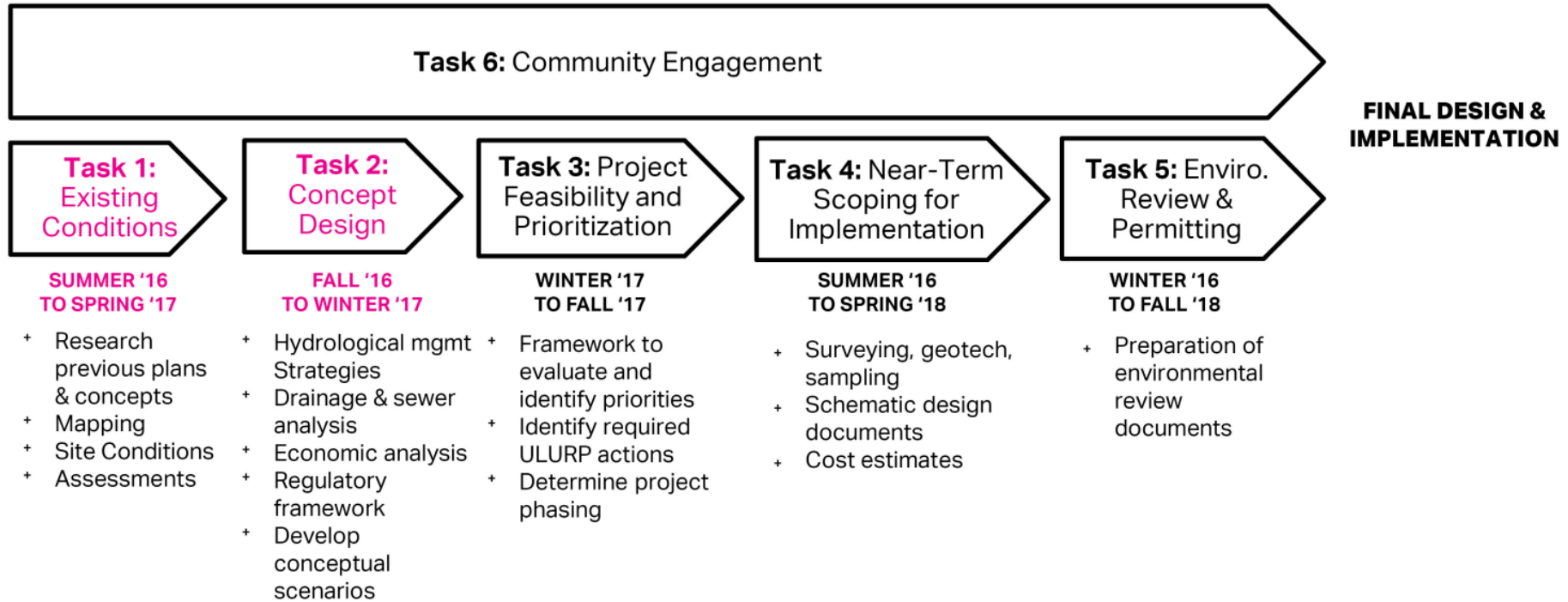
BASE CLOSE-UP

Manhattan Community Board 1 Committee Report

Battery Park City – N. Segarra

- 1) Street activity permit for Downtown Little League on Saturday, April 22, 2017 from 9am to 12pm, Warren Street between West Street and North End Avenue – Resolution
- 2) NYC Office of Resiliency – Report
- 3) Wagner Park – Report
- 4) Allied Universal Ambassadors – Report
- 5) Battery Park City Authority – Report

PROJECT PROCESS



CONCERNS AND PREFERENCES ABOUT INFRASTRUCTURE TYPES

KEY PREFERENCES

- Overall, similar results for BPC and FiDi
- Maintain existing waterfront views and access
- Prioritize infrastructure that has a natural look
- Ensure that resiliency infrastructure is accessible for all ages and residents

KEY CONCERNS

- Blocking the waterfront (BPC - slightly stronger concern)
- High costs
- High maintenance requirements (FiDi - slightly stronger concern)
- Not enough space for berms
- Reliance on manual deployment in times of crisis and the associated risks (FiDi - slightly stronger concern)



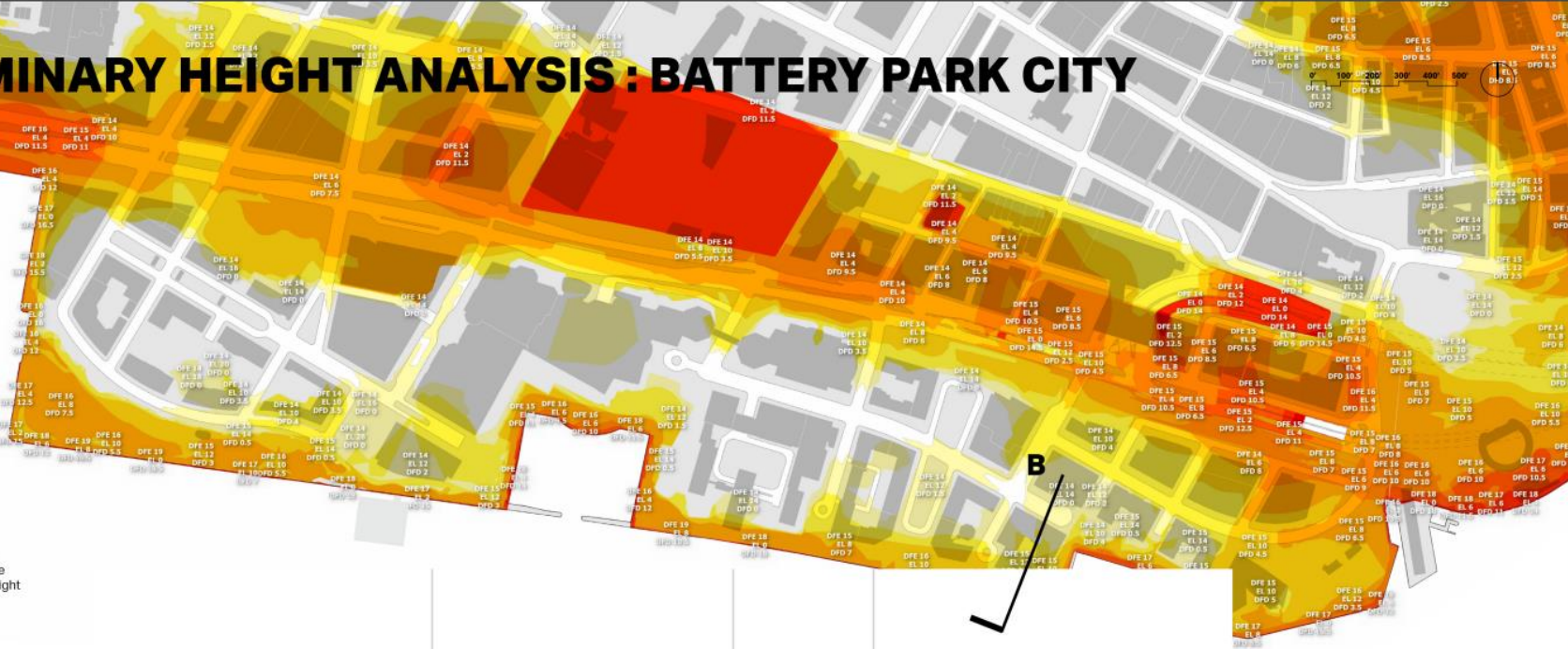
PRELIMINARY HEIGHT ANALYSIS : BATTERY PARK CITY

100 YEAR

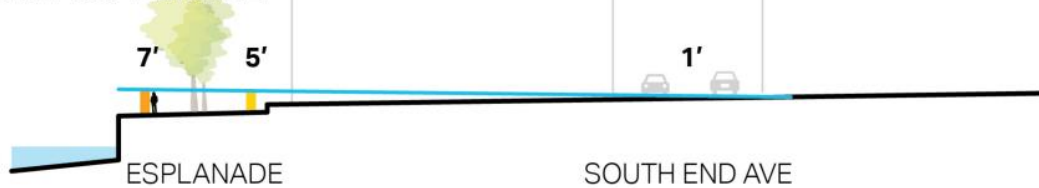
HEIGHT OF INTERVENTION



DFE: Design Flood Elevation
 EL: Elevation of Existing Grade
 DFD: Design Flood Depth (Height of Intervention)



B BATTERY PARK CITY ESPLANADE



INFRASTRUCTURE TOOLKIT

BATTERY PARK CITY



NEXT STEPS

- Private property owner interviews and stakeholder outreach : **completed end of 2016**
- Continue detailed surveying : **completed early 2017**
 - Utilities
 - Existing Elevations
 - Key Infrastructure
- Develop conceptual scenarios : **completed early 2017**
- Coastal modeling & interior drainage : **completed spring 2017**
- Project feasibility : **completed spring 2017**
- Identify alignments : **completed fall 2017**



Wagner Park

Battery Park City Authority

November 9, 2016

Perkins Eastman

Battery Park City Authority

© 2015 Perkins Eastman Architects DPC
Perkins Eastman

WHO RESPONDED

Of 414 total respondents*:

**Live in
Battery
Park City**

268



**Local Area
Visitors to
Battery Park
City**

81



**Work in
Battery
Park City**

80



**NYC Visitors
to Battery
Park City**

32



**Live
outside
NYC**

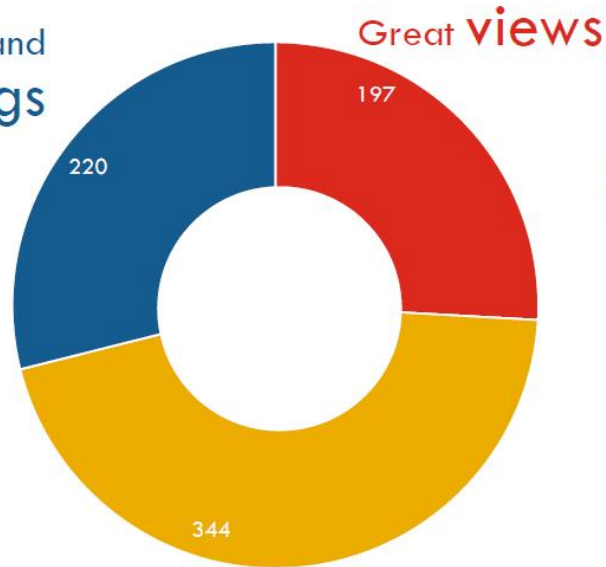
10



**Numbers add to more than 414 due to multiple responses by some respondents*

WHAT THEY LIKE BEST ABOUT WAGNER PARK

Programming and
retail offerings



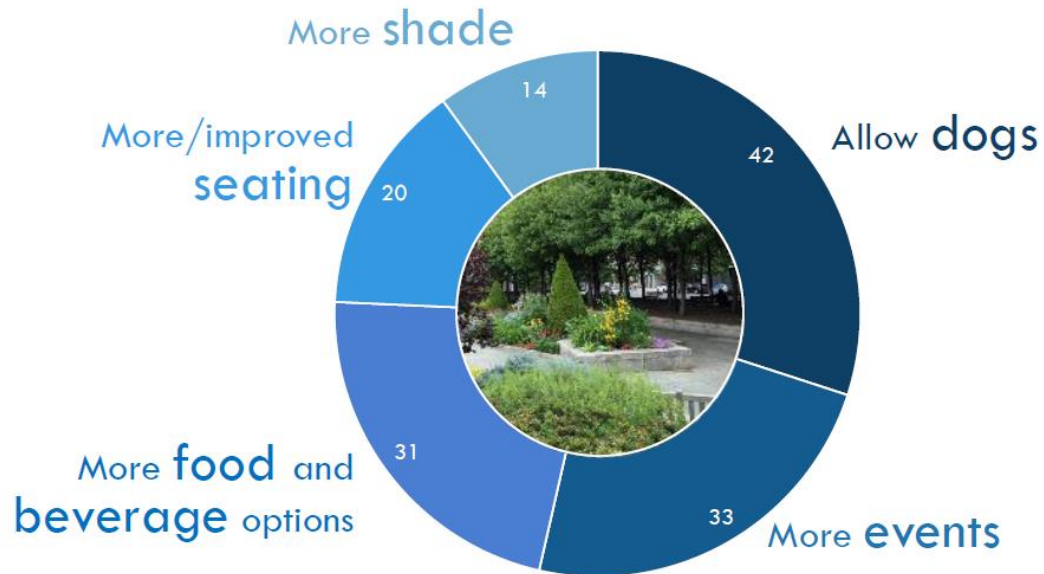
Quality of the Park
environment



“It's like being in Cape Cod,
but still NYC”

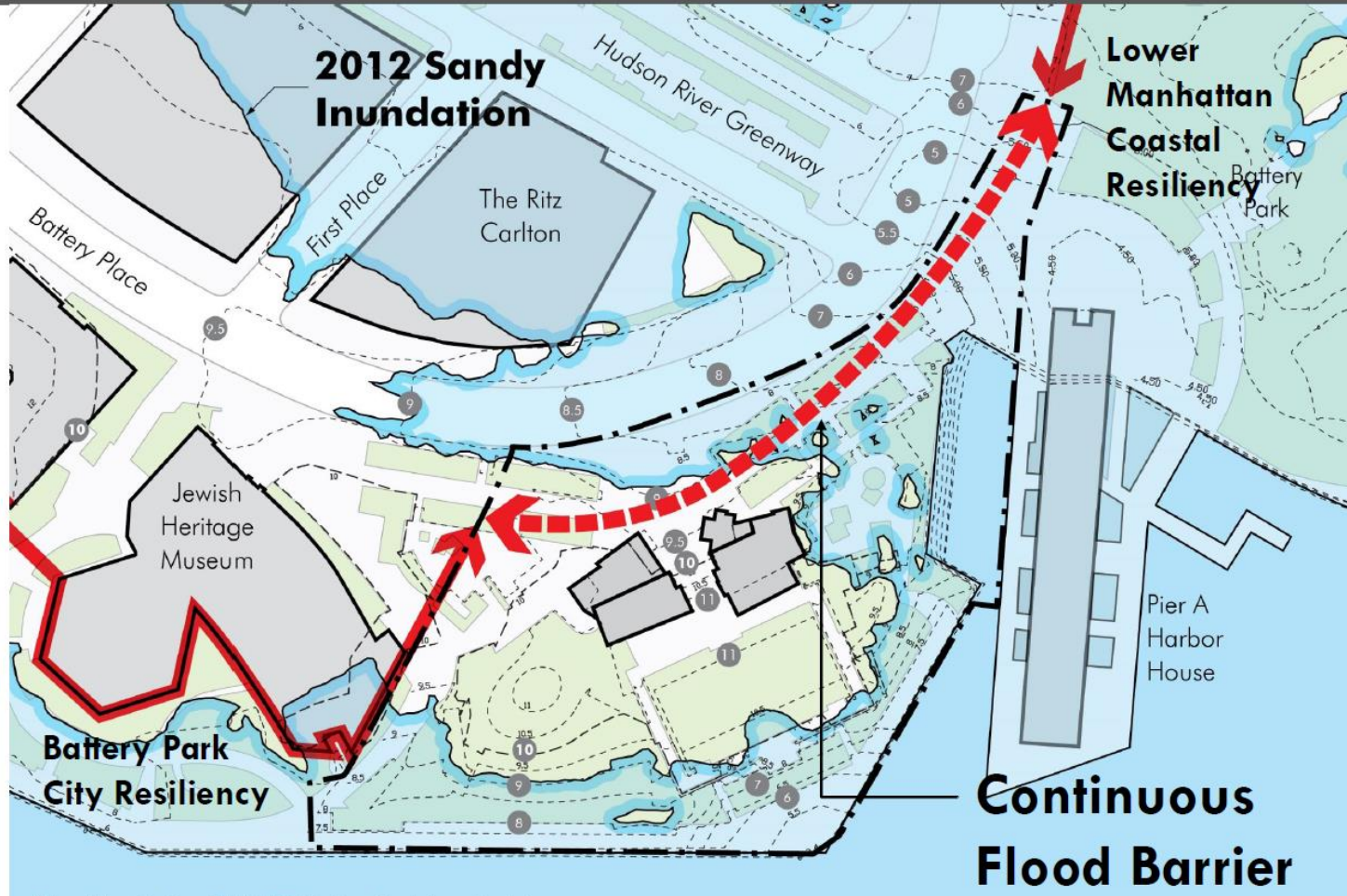
“Sitting by the water surrounded by green, you forget you're in the middle of the city!”

HOW WAGNER PARK COULD BE IMPROVED

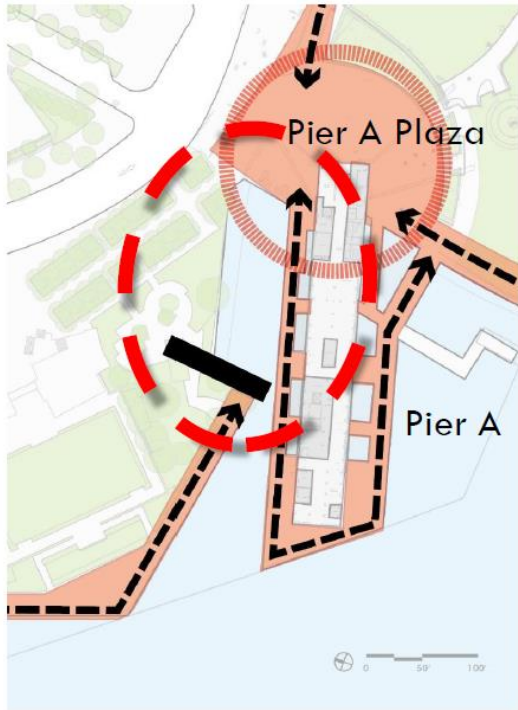


“Being able to walk my dog along the water and sit in the quiet of the park would be a reason to visit Wagner park more often.”

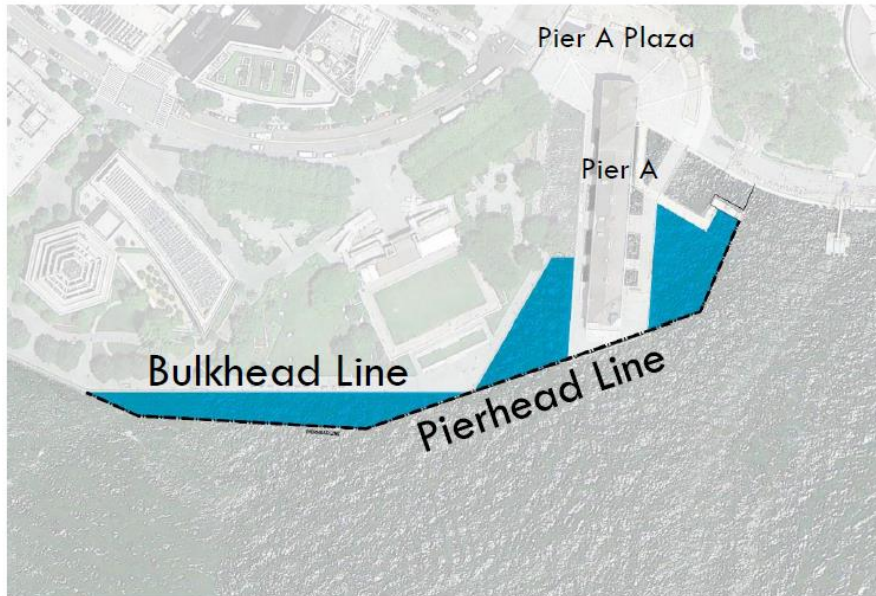
Establishing a Continuous Floor Barrier – Superstorm Sandy Inundation



Pier A Cut-off



Maritime Potential

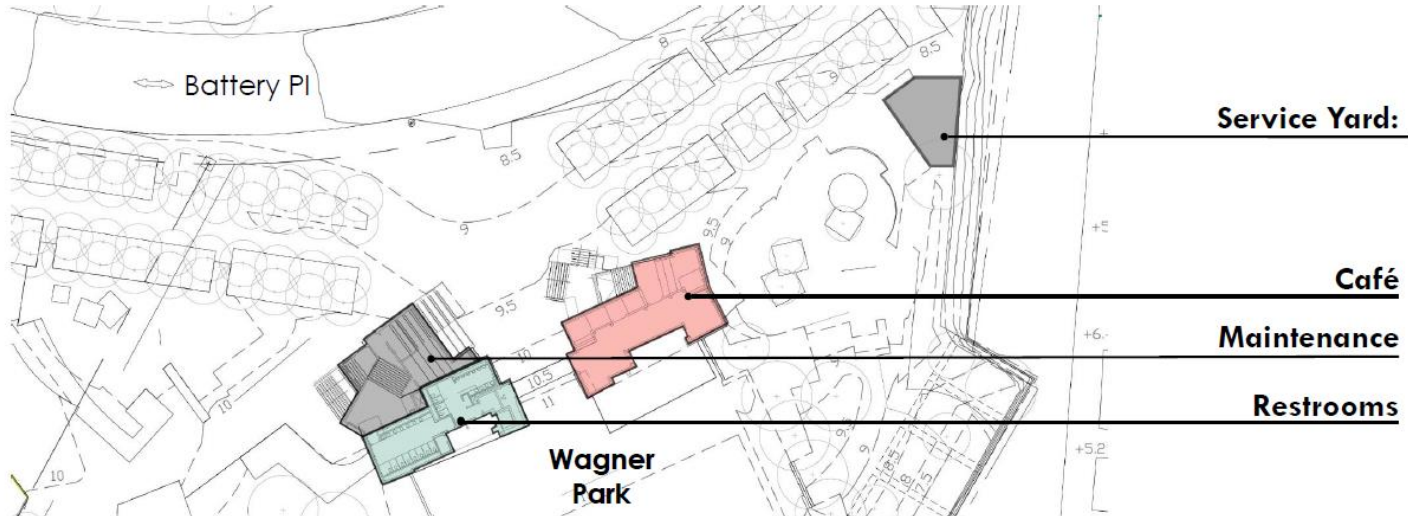


Emergency Access Plus:

- *Educational Ships*
- *Recreational Ships*
- *Cultural Ships*



Building Program Needs



| Item | Existing | Needed |
|--------------|----------|----------|
| Restaurant | 2,400 SF | 6,000 SF |
| Restrooms | 1,560 SF | 1 000 SF |
| Service Yard | 1,000 SF | 2,000 SF |
| Maintenance | 1,800 SF | 3,600 SF |

Deployable Flood Borders



Recommended Goals

- *Use the property to provide resiliency protection for upland areas, without limiting public access and views*
- Extend the Esplanade thru to Pier A and Battery Park
- Improve the park for use by **BPC residents**
- Improve maintenance and support facilities
- Provide better opportunity for food and beverage



Recommendations

- Public park with areas devoted to passive use
- Easily accessible viewpoints of the harbor
- Public restroom facility
- Community services - include parks programming & limited recreational activities
- BPCA support space for security & maintenance operations
- Appropriate commercial activity for the public's benefit, including but not limited to food and drink service
- Other desirable uses as may be identified during the course of the Project.

Manhattan Community Board 1

Old Business

Manhattan Community Board 1

New Business

Manhattan Community Board 1 Adjournment

Thank you and goodnight

