



Manhattan Community Board 1

Full Board Meeting

Tuesday, April 26, 2016

6:00 PM

Governor's Island Ferry Terminal - 10 South Street
(Photo ID is required to enter building)

Catherine McVay Hughes, Chairperson

Noah Pfefferblit, District Manager

Lucy Acevedo, Community Coordinator

Diana Switaj, Director of Planning and Land Use

Michael Levine, Planning Consultant



CB1's OFFICE CONTACT

Please update your records to reflect the following changes:

Manhattan Community Board 1
1 Centre Street, Room 2202 North
New York, NY 10007

Tel: (212) 669-7970

Fax: (212) 669-7899

Website:

<http://www.nyc.gov/html/mancb1/html/home/home.shtml>

Email: Man01@cb.nyc.gov



Manhattan Community Board 1 Public Session

Comments by members of the public (6 PM to 7 PM)

(Please limit to 1-2 minutes per speaker, to allow everyone to voice their opinions)

Welcome:

Leslie Koch, President, Trust for Governors Island

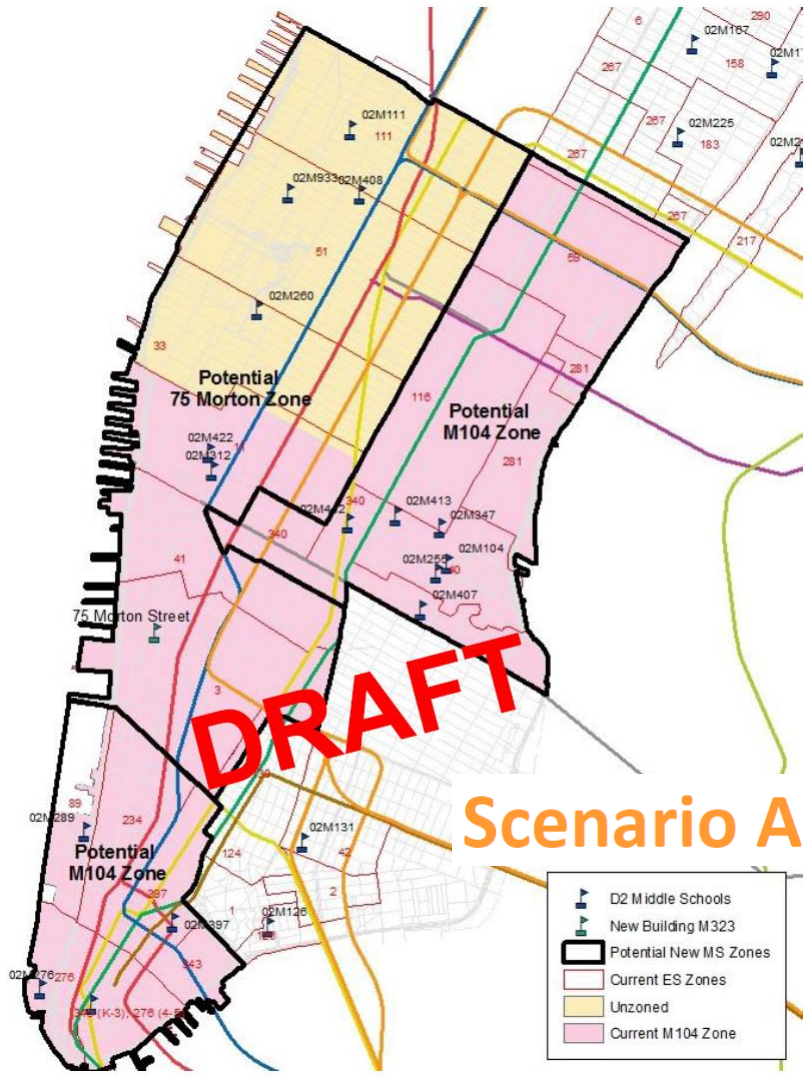
An Image of NYC at night taken by astronauts in space



Manhattan Community Board 1 Business Session

- Adoption of March 2016 minutes
- Chairperson's Report – C. McVay Hughes
- District Manager's Report – N. Pfefferblit
- Treasurer's Report – J. Kopel

Draft of Proposed Zone Lines:



Scenario A



Scenario B

Senator Squadron Press Conference calling on the City to continue construction coordination for Lower Manhattan with DOT's Lower Manhattan office set to close at the end of the month.

WHAT: Electeds, community urge City not to eliminate long-standing Lower Manhattan construction coordination

WHEN: Wednesday, April 27, 10am

WHERE: City Hall Steps

Questions? Reach out to:

Eric Mayo
Director of Operations
NYS Senator Daniel Squadron
Tel: [212-298-5565](tel:212-298-5565)
emm.senate@gmail.com

PHOTOS: Tractor-Trailer Hits Scaffolding on Narrow Downtown Streets



**GOLD ST & ANN ST
4/4/2016**

346 Broadway Clock Tower





**DEDICATION OF EVACUATION DAY PLAZA AT BOWLING GREEN
4/21/2016**

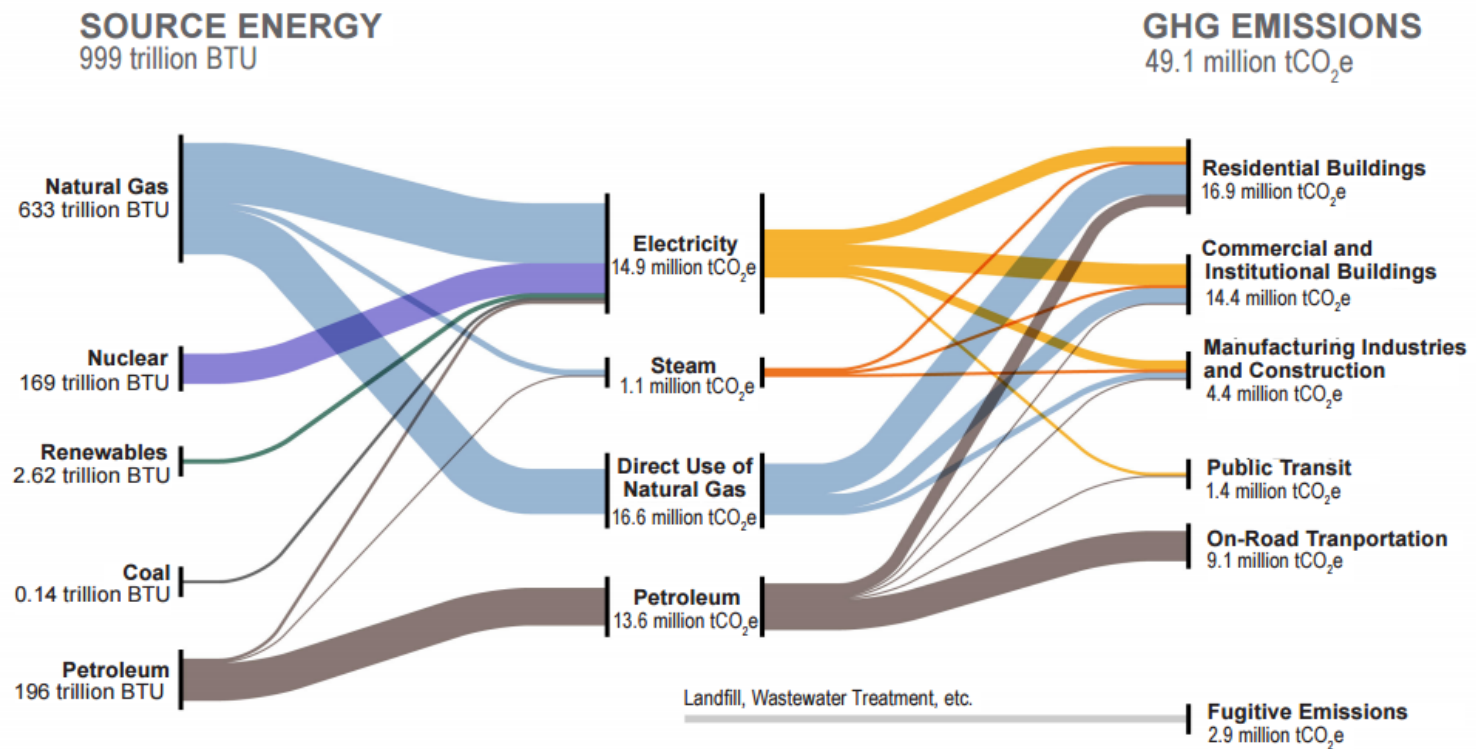


**TOUR OF GOVERNORS ISLAND
4/8/2016**

New York City Energy Use and Greenhouse Gas Emissions

In 2014, New York City buildings were responsible for 73 percent of citywide greenhouse gas (GHG) emissions through the use of natural gas, electricity, heating oil, steam, and biofuel. The transportation sector accounted for 21 percent and the remaining GHG emissions stem largely from fugitive emissions released from landfills and wastewater treatment plants.

Fig. 1: 2014 New York City Energy Consumption and Greenhouse Gas Emissions



Manhattan Community Board 1 Committee Reports

Nominating

- 1) Selection of Committee Chair – Report
- 2) Discussion of Candidates for Chairperson, Vice-Chairperson, Secretary, Assistant Secretary and Treasurer – Report

Manhattan Community Board 1 Committee Reports

Personnel – R. Byrom

- 1) Paid parental leave – Resolution
- 2) Discussion of operations of CB1 Office – Report
- 3) Land Use Consultant – Report

Manhattan Community Board 1 Committee Reports

Quality of Life – P. Moore

- 1) Request to establish a construction coordinator to engage the Lower Manhattan community – Resolution
- 2) Light pollution – Resolution
- 3) Construction Forum – Report

An Image of NYC at night taken by astronauts in space



Manhattan Community Board 1 Committee Report

Joint Quality of Life and Financial District
– P. Moore and S. Cole

1) Proposed City Council legislation to license ticket vendors – Resolution

Ticket vendors crowd Whitehall Station exit
April 8, 2016



TOURIST FROM ARKANSAS ATTACKED, SKULL FRACTURED FOR NOT BUYING STATUE OF LIBERTY TICKETS



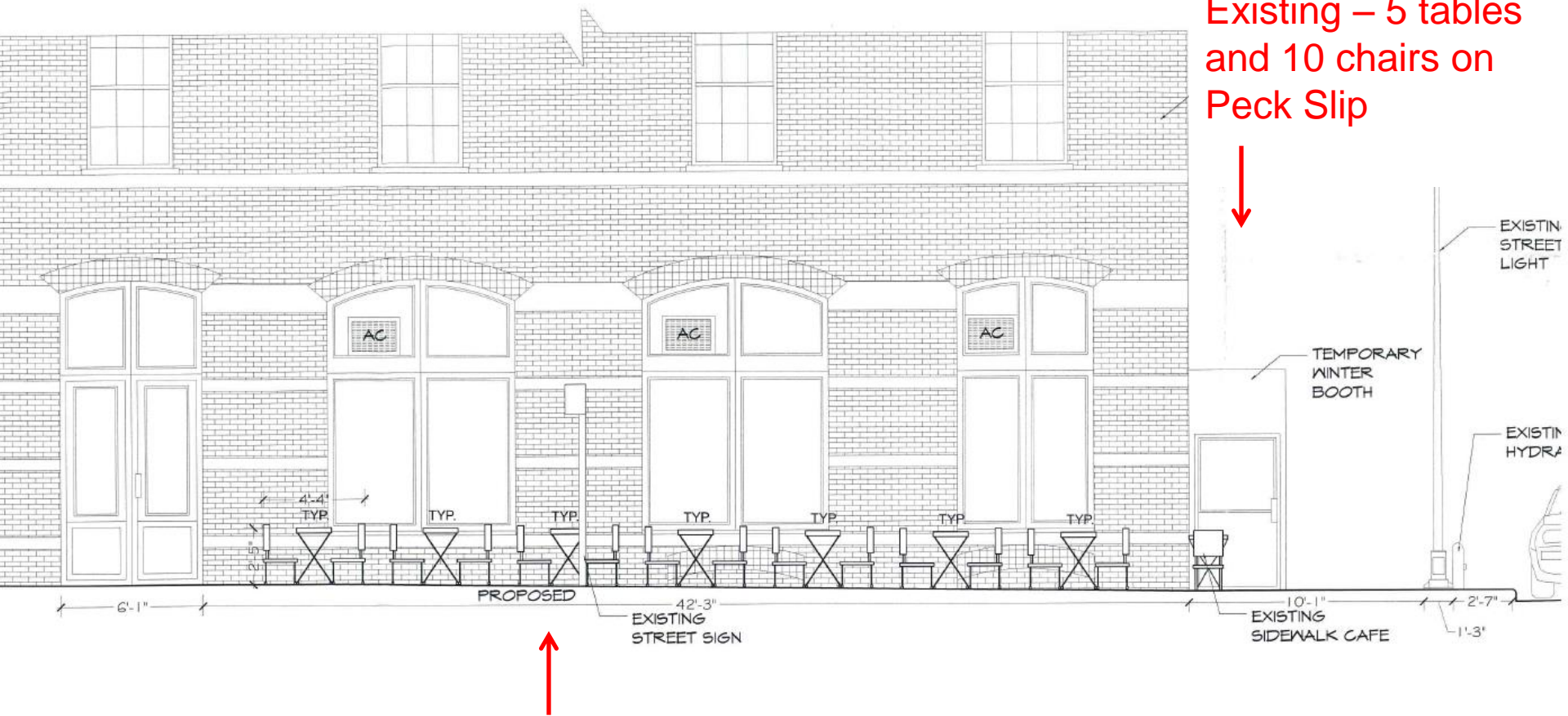
Scammers who prey on tourists run rampant in Manhattan

Proposed City Council legislation to license ticket vendors

Manhattan Community Board 1 Committee Reports

Seaport/Civic Center – M. Pasanella

- 1) Development in the Seaport area – Resolution
- 2) Street Activity Permit Office application for 4th of July Pig Roast, Friday, August 5, 2016, Maiden Lane between South Street and Water Street – Resolution
- 3) 21 Peck Slip, application for modification of a sidewalk café license for Acqua Restaurant – Resolution
- 4) 212 Front Street, application for change in method of operation for a restaurant liquor license – Resolution
- 5) 78 South Street, request for one-time alteration of hours for Watermark – Resolution
- 6) Future of Brooklyn Banks – Report



Existing – 5 tables and 10 chairs on Peck Slip

Proposed – Additional 7 tables and 14 chairs on Water St

21 Peck Slip, application for modification of a sidewalk café license for Acqua

Manhattan Community Board 1 Committee Reports

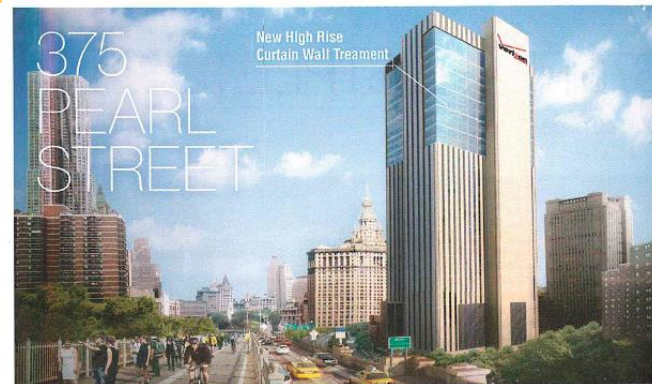
Planning – D. Switaj

- 1) 375 Pearl Street, notice of intent to acquire office space by Human Resources Administration – Resolution
- 2) World Trade Center Quarterly Update – Report
- 3) Performing Arts Center World Trade Center – Report
- 4) Silverstein Properties Update – Report
- 5) Retail at World Trade Center Transportation Hub – Report
- 6) 9/11 Memorial & Museum – Report

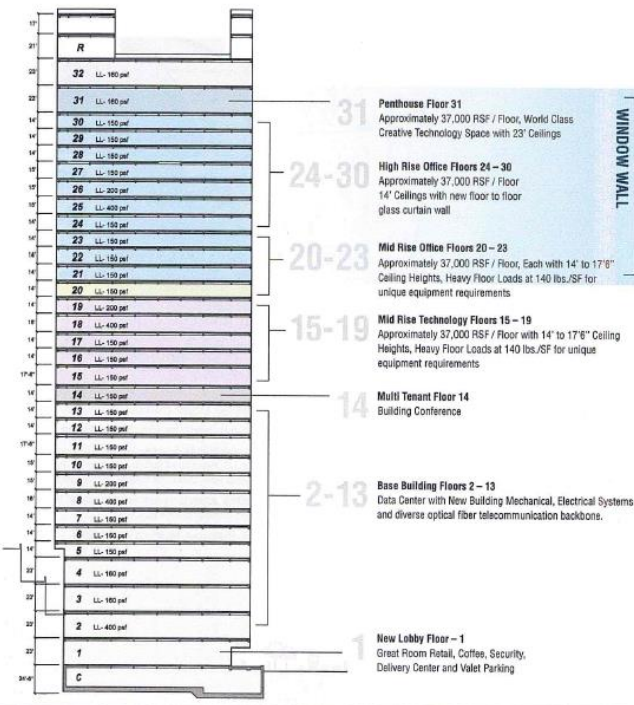
375 PEARL STREET

Office Space

300,000 RSF of
Office, Technology
and Creative Space
Available for Lease



A VERTICAL CAMPUS



STEP INSIDE
THE MACHINE

375PEARL.COM

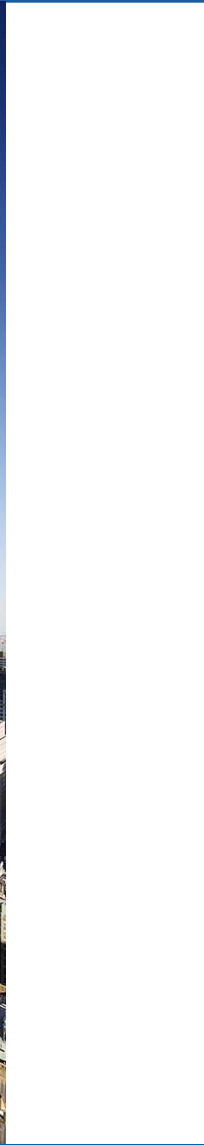
The Port Authority of NY & NJ

World Trade Center Progress

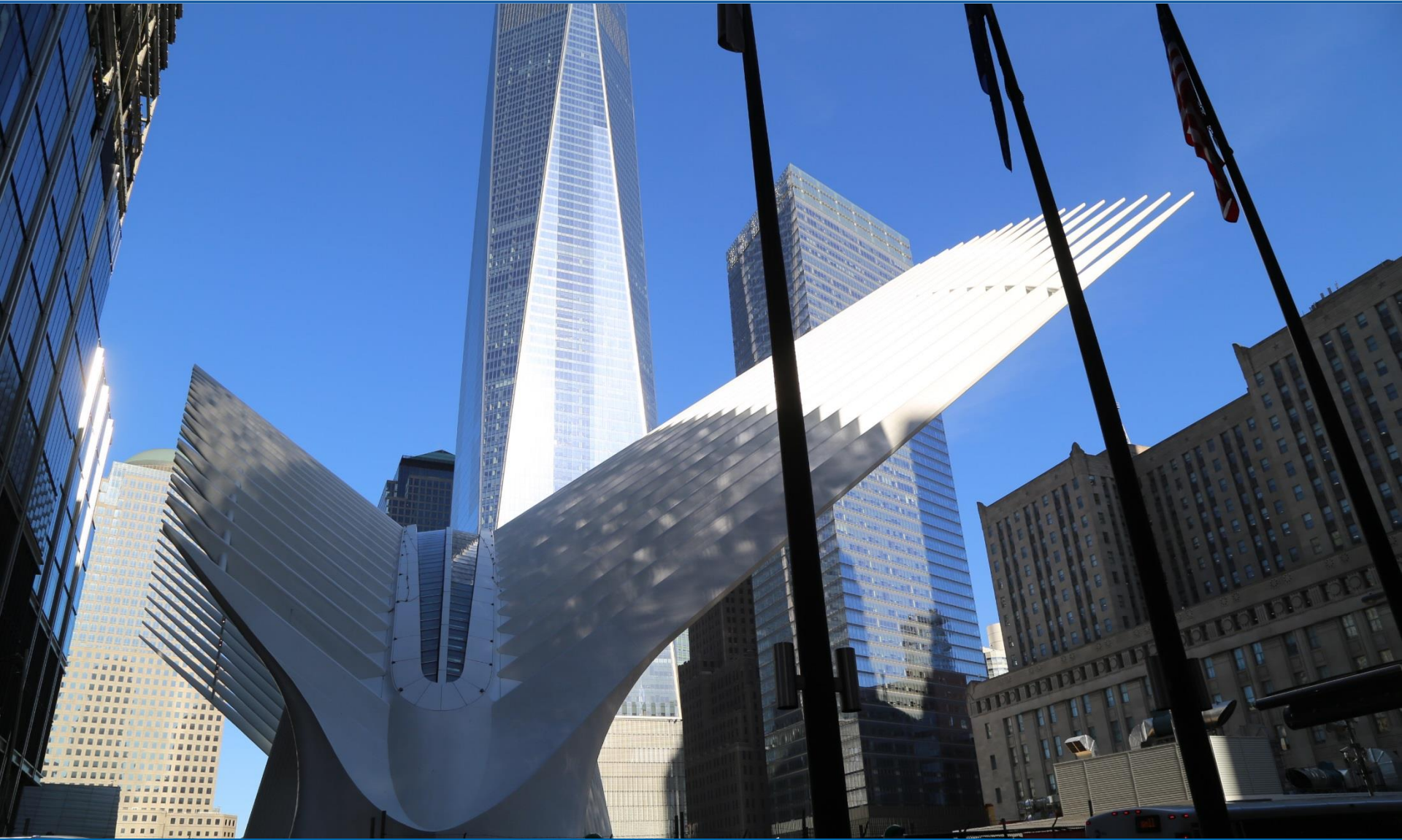
Update to Community Board 1

April 11, 2016

WTC Construction Progress



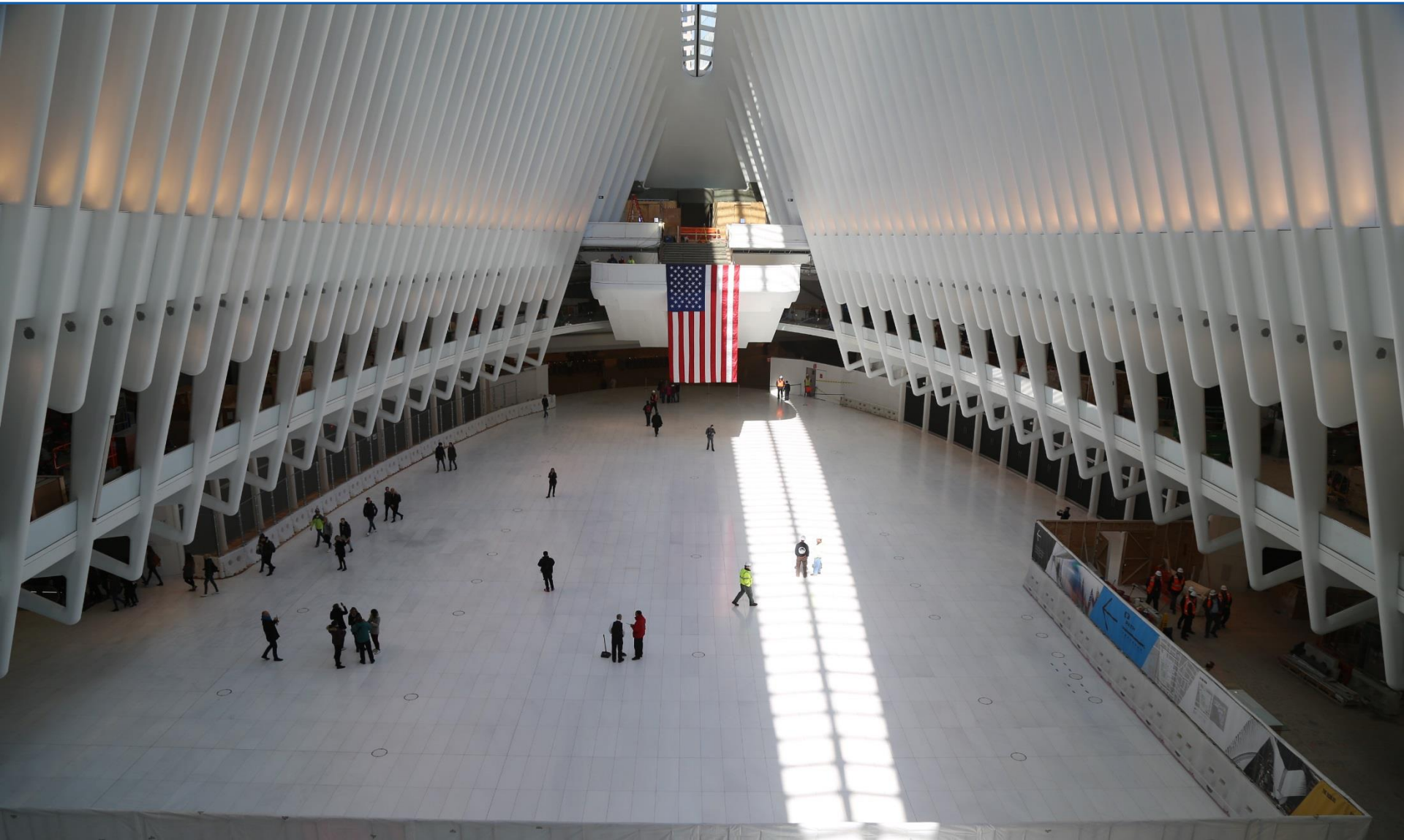
Transportation Hub/Oculus



Transportation Hub/Oculus



Transit Hall – Oculus



Transit Hall – Oculus



















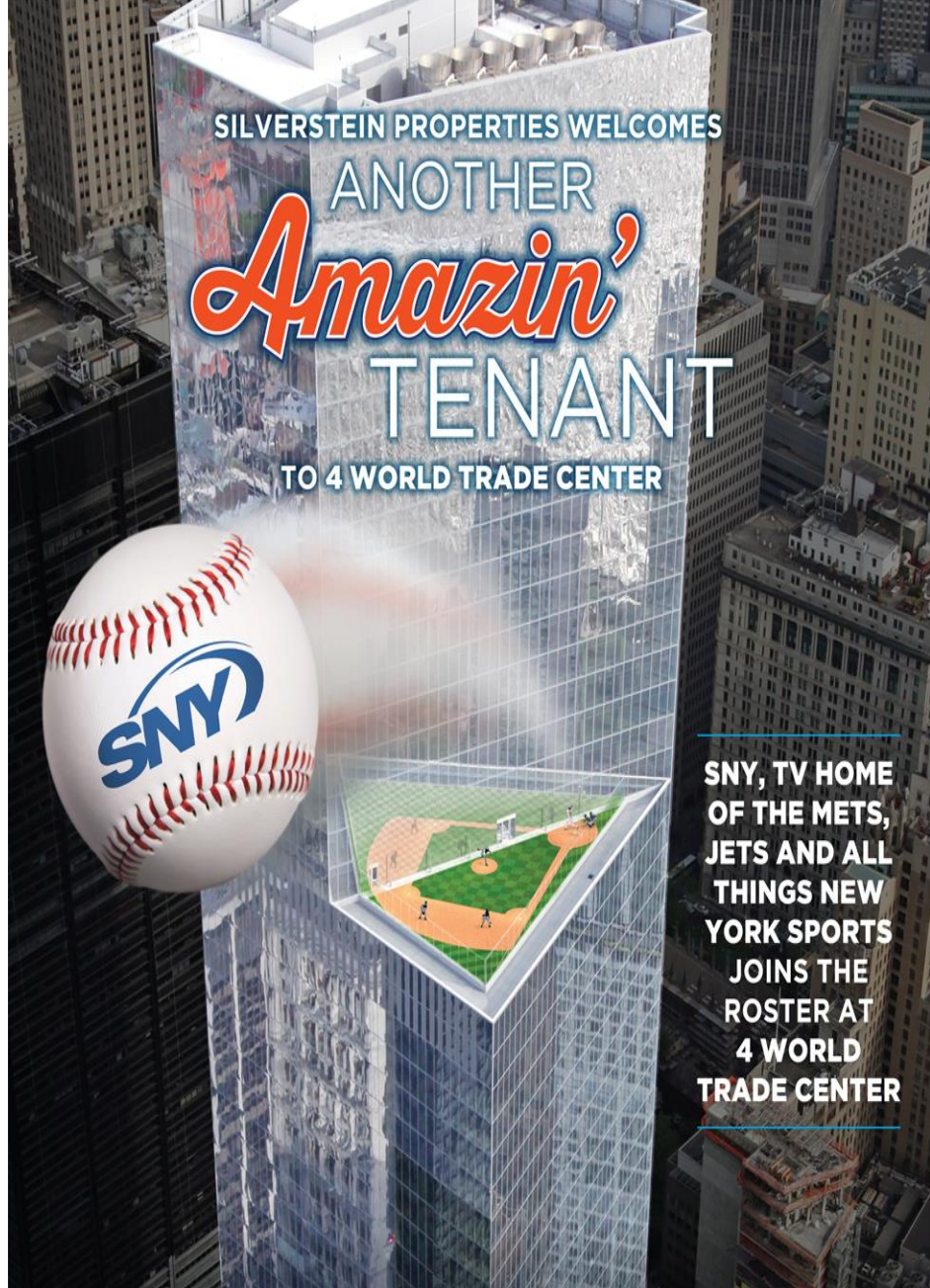
COLUMN FREE FLOORS
 QUIET
 HIGH TECH
 DINING
 OPEN
 FLOORPLANS
 LIVE BETTER
 SMART ELEVATORS
 DOWNTOWN
 ACCESS
 MAKI
 RETAIL
 TO TRANSIT
 CLOSE
 TO TRANSIT
 EFFICIENT
 DESIGN
 MEDIA MATH
 AMAZING VIEWS
 LIGHTS
 OPENED
 UP

IT ALL
 ADDS UP
 TO

SILVERSTEIN PROPERTIES
 PROUDLY WELCOMES



TO
 4 WORLD TRADE CENTER



SILVERSTEIN PROPERTIES WELCOMES
 ANOTHER
Amazin'
 TENANT

TO 4 WORLD TRADE CENTER

SNY, TV HOME
 OF THE METS,
 JETS AND ALL
 THINGS NEW
 YORK SPORTS
 JOINS THE
 ROSTER AT
 4 WORLD
 TRADE CENTER



EATALY







An architectural rendering of the Westfield World Trade Center, featuring the iconic Oculus structure in the foreground. The scene is set at sunset, with a warm orange and yellow sky and a sun low on the horizon. The Oculus is a large, white, ribbed structure that curves upwards. In the background, several tall, modern skyscrapers with glass facades are visible, reflecting the sky. The overall atmosphere is one of a modern, urban environment.

WESTFIELD WORLD TRADE CENTER
**COMMUNITY BOARD
UPDATE**

Westfield

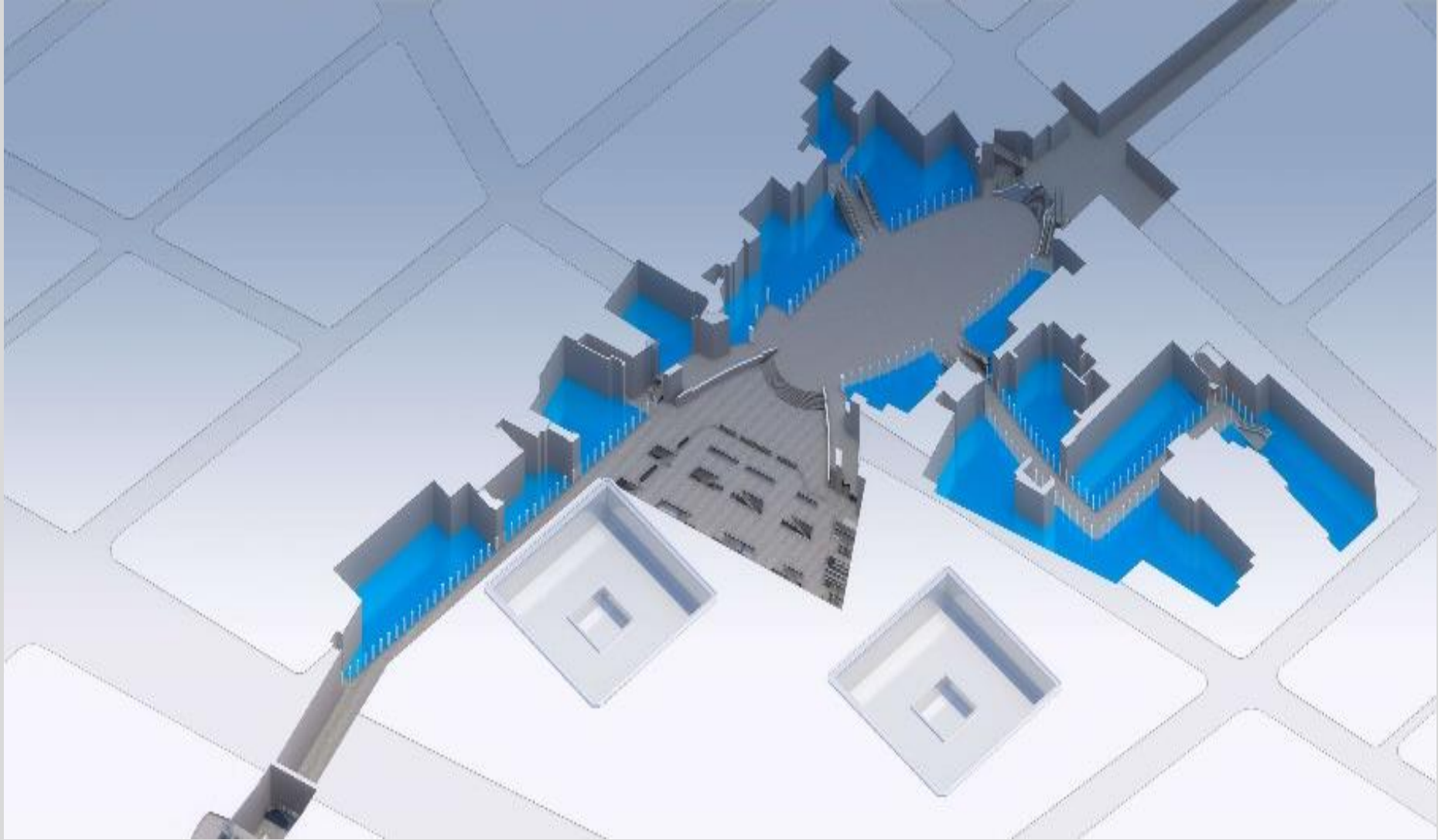
OVERVIEW

Westfield World Trade Center encompasses the Oculus, along with street-level retail in 3 World Trade Center and 4 World Trade Center, and the galleries that run underground across the World Trade Center campus.

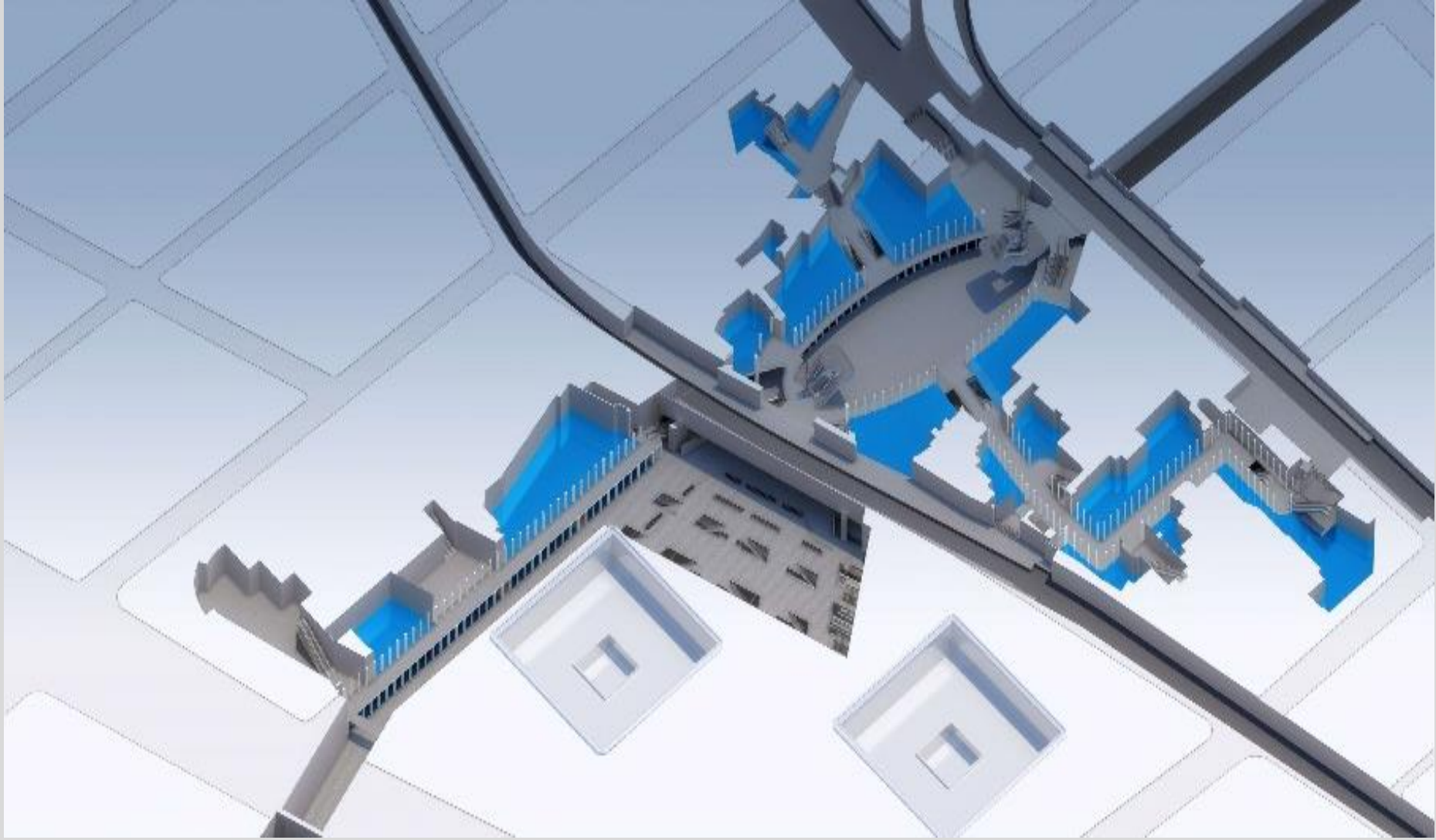
- Majority of retail opening in August
- 365,000 square feet of retail, food and dining
- Serving local community, tourists and commuters



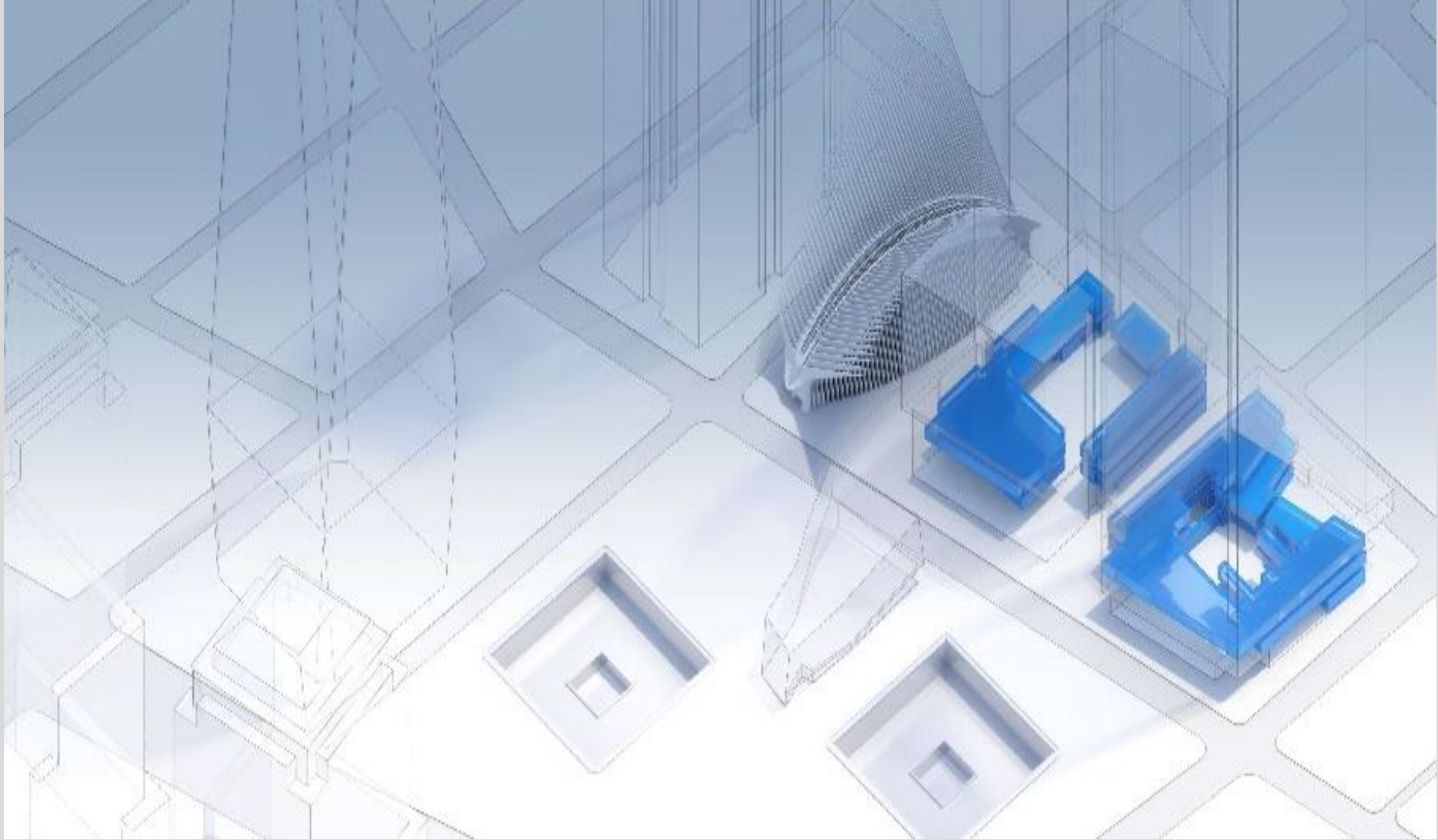
FOOTPRINT – C2



FOOTPRINT – C1



FOOTPRINT –



RETAIL/FOOD/DINING

The center will be home to a diverse mix of over 100 global and local, fashion, lifestyle and technology brands along with an exquisite collection of casual and upscale dining, featuring established and emerging chefs and restaurateurs.

- Retailers include Apple, Banana Republic, Boss Hugo Boss, H&M, Kate Spade, John Varvatos and Victoria's Secret
- Gourmet food options include Eataly, Market Lane and Epicure Boloud as well as various international and local bakeries, coffee shops and restaurants
- Other convenience retailers and services including newsstands, drug and convenience stores, on-the-go food shops and a concierge desk



ART/CULTURE/COMMUNITY

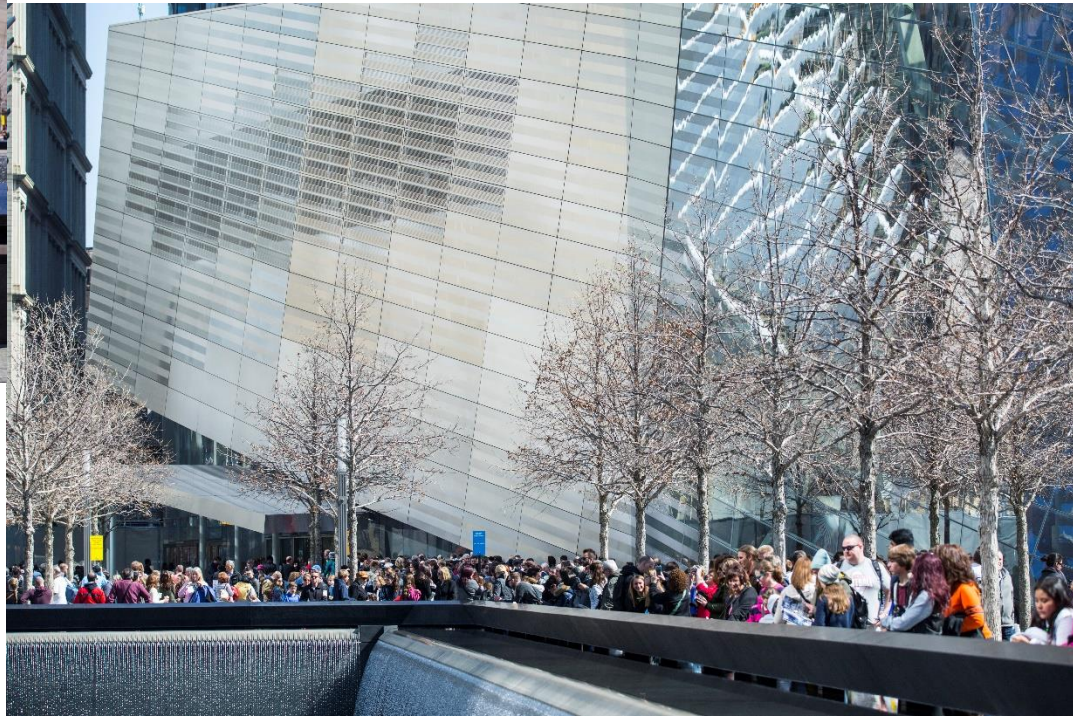
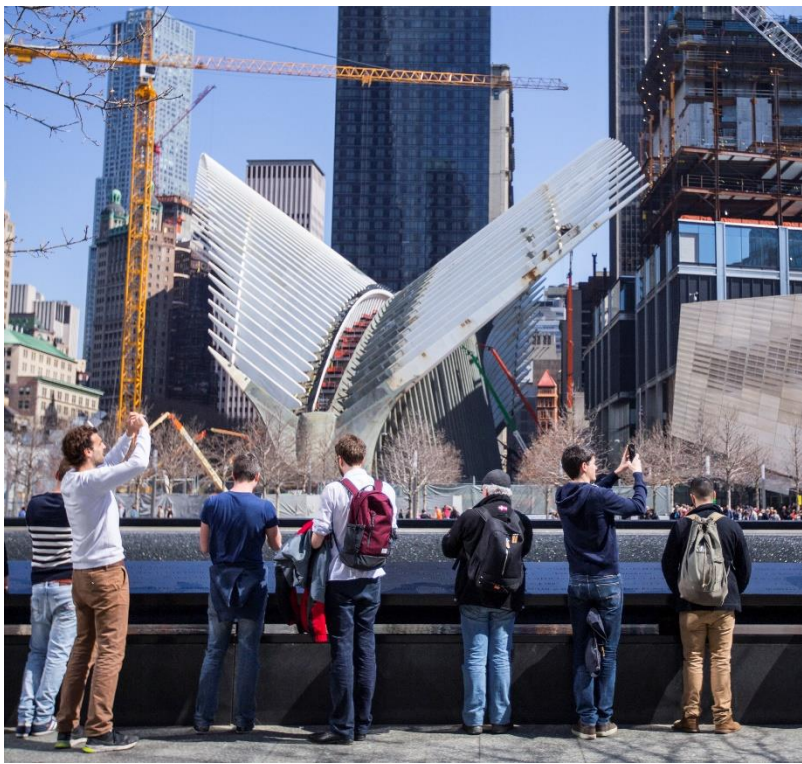
It will also offer a range of New York-centric services and amenities powered by state-of-the-art technology, as well as must-see cultural and community experiences, all within an architecturally breathtaking space.

- Commitment to programming the space with art and cultural events once open
- State of the art digital technology throughout the facility
- In the community Westfield operates the Bruce Eagleson Arts Program and supports the 9/11 Memorial, LMCC and New Museum



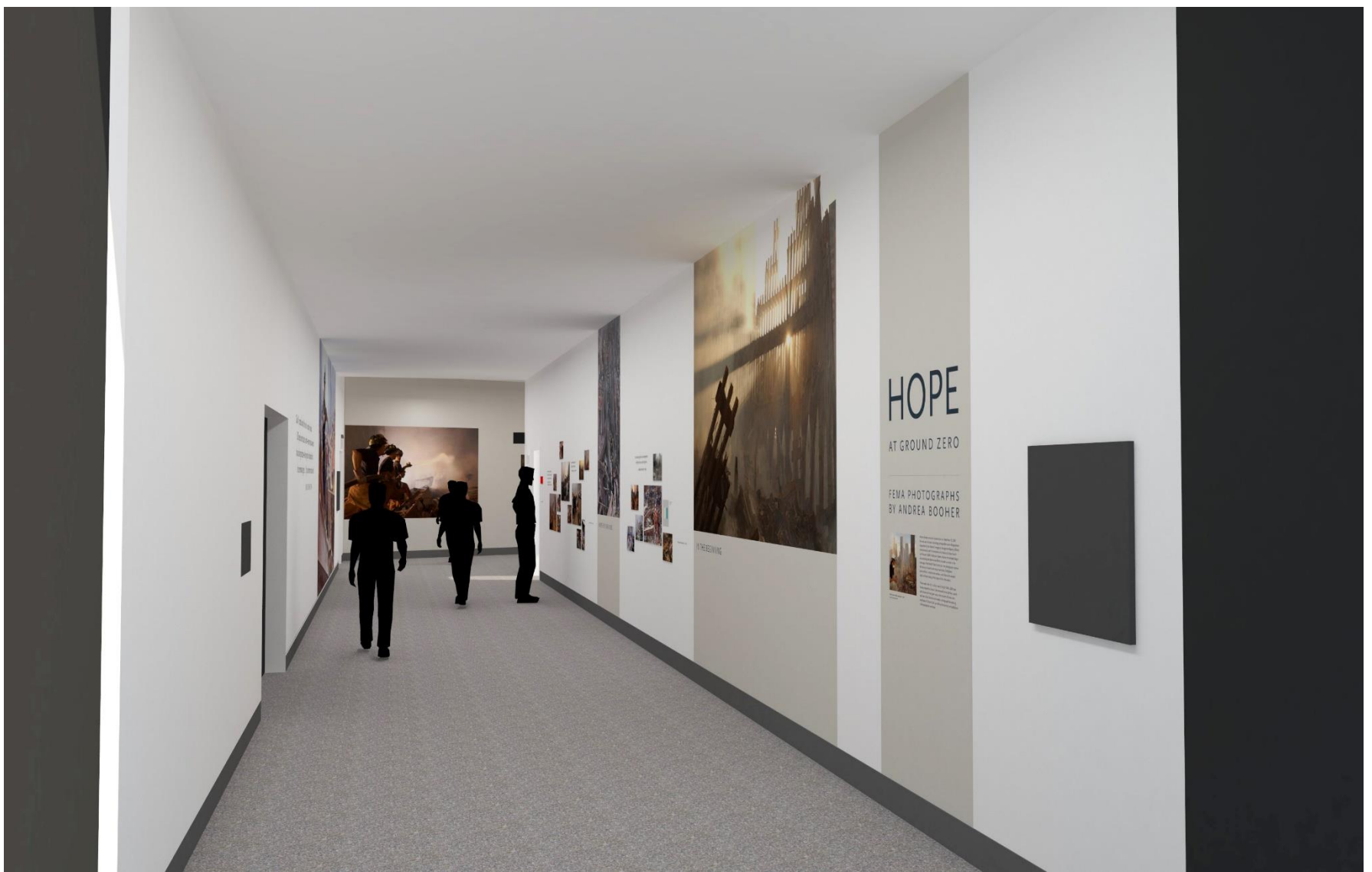
Community Board 1 Planning Committee Update

April 11, 2016



Attendance Growth Northeast Access on the Plaza

9/11
MEMORIAL



“HOPE at Ground Zero” opens May 18

9/11
MEMORIAL



Tribute at the Last Column Expanded Health Impacts Content

9/11
MEMORIAL



Education Programs and Free Access





Fire! Madeline Spates

My class walked up to the 3rd floor to our class.

My teacher called everyone up to the 3rd floor to our class. My teacher called everyone up to the 3rd floor to our class.

Then one of the girls said "the WTC is on fire!" every one crowded over and asked so many questions. Two of the kids in our classroom said their dad and cousin were in the WTC. Then parents started to come. Luckily my mom came early. Then we ran to my dad's office, he was there! Then we went to the office of our friend's dad and played and calmed down.



Maddy and Isabella across from their school.



Gift of Loretta Thomas

New Acquisitions

A Tragedy in Our Lives: September 11, 2001

Handmade book by lower Manhattan resident Loretta Thomas & her 8 year old daughter





[Our City. Our Story.](#)

9/11
MEMORIAL

Manhattan Community Board 1 Committee Reports

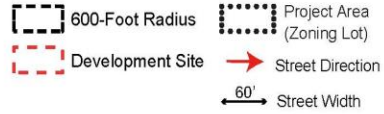
Tribeca – A. Blank/J. Ehrlich

- 1) 404 Broadway, application for liquor license for Chipotle Mexican Grill – Resolution
- 2) JCP sidewalk Sukkah street activity permit application for Duane Street between Church Street and West Broadway, October 14, 2016 8 a.m. – October 26, 2016 8 p.m. – Resolution
- 3) Chabad of Tribeca, street activity permit application for Reade Street between Broadway and Church Street, Sunday, September 18, 2016 8:30 a.m. – 3 p.m. – Resolution
- 4) Street activity permit for Church Street School, Sunday, May 22, 2016 9 a.m. to 6 p.m. on Warren Street between West Broadway and Greenwich – Resolution
- 5) 70 Vestry Street, application for City Planning Commission Special Permit to allow a 42 space accessory parking garage – Resolution
- 6) 62 Thomas Street, application for restaurant liquor license for Elmwood Venture LLC d/b/a Buddha Bar – Resolution

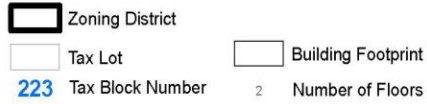
Area Map

70 Vestry Street, Manhattan
Block 223 Lot 3

Project Information



Zoning Districts



Land Use



70 Vestry Street



Manhattan Community Board 1 Committee Reports

Tribeca – A. Blank/J. Ehrlich

- 7) Street Activity Permit application by Transportation Alternatives, October 5, 2016 9 a.m. – 5 p.m., Beach Street between Collister and Greenwich Streets – Resolution
- 8) 325 Broadway, application for restaurant wine and beer license for Wichcraft – Resolution
- 9) 251 Church Street, application for new sidewalk cafe at Two Hands Tribeca LLC – Resolution
- 10) The Flea Theater – Report
- 11) Worth Street Reconstruction Project – Report
- 12) TD Five Borough Bike Tour temporary street closures – Report

Reconstruction of Worth Street (Hudson Street to Park Row)

Project ID: HWMWTCA7E

Community Board 1
Tribeca Committee Meeting
April 13, 2016 6:00PM

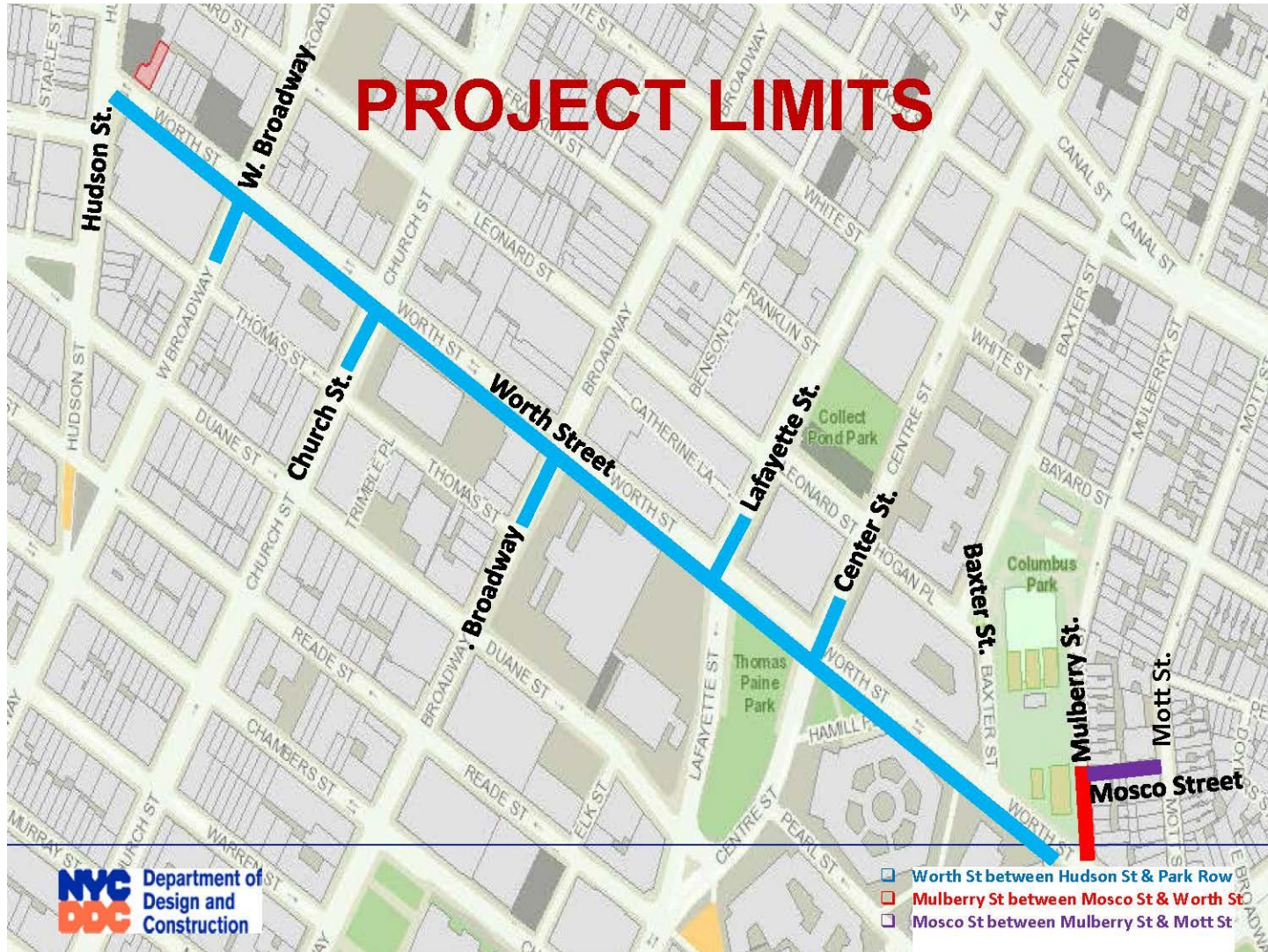
Project Data

Project ID: HMMWTCA7E
Bid Date: June 12, 2015
Registered Date: February 26, 2016
Notice To Proceed: April 11, 2016
Contractor: MFM contracting corp.
Contract Value: \$80,013,850.88
Contract Duration: 1825 CCD Days
Federal/State Fund: Yes
Joint Bid: Yes
Holiday Embargo: Thanksgiving – New Year
Holiday
Field Office: 40 Worth Street – Room 821

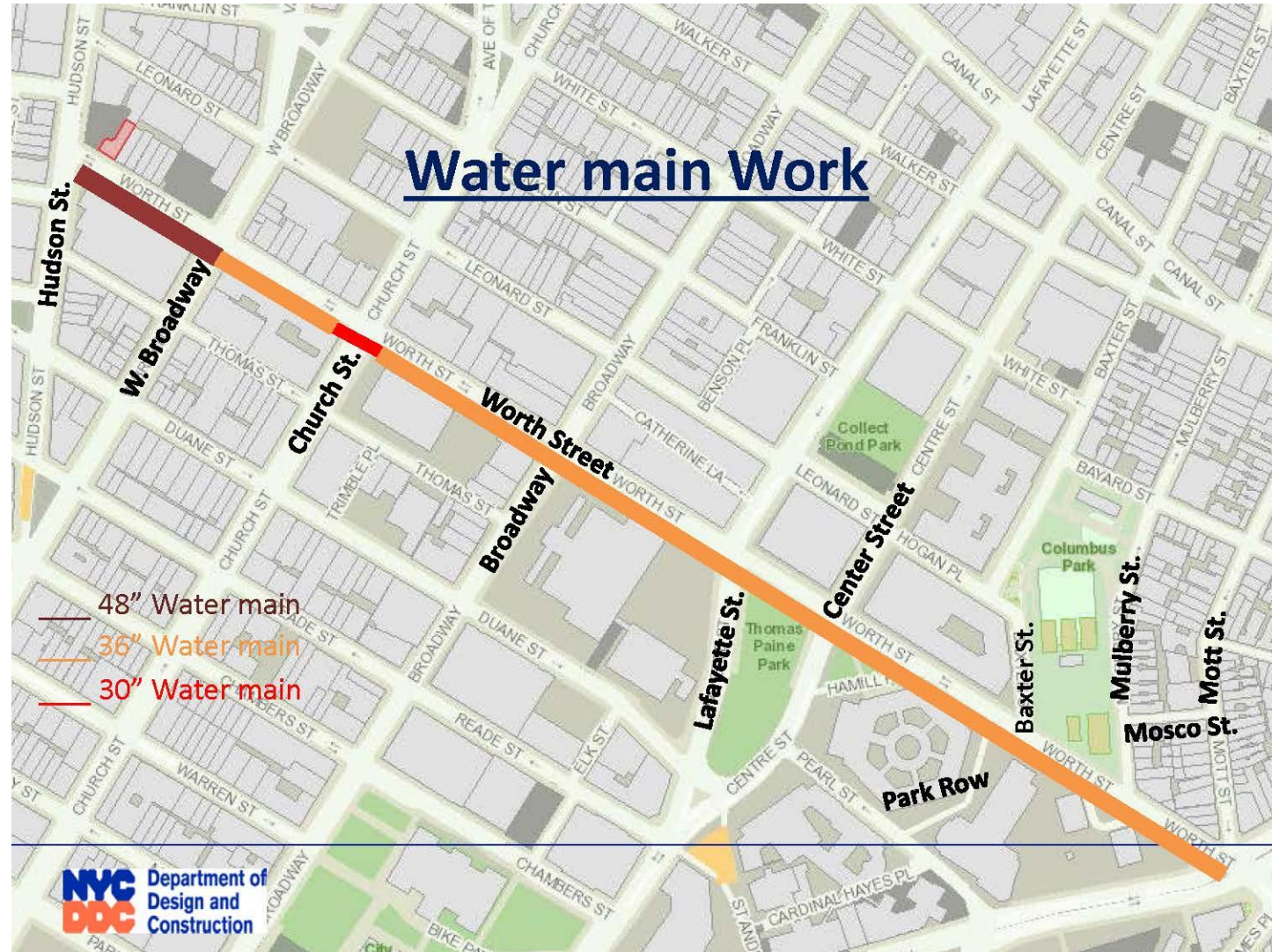
Scope of Work

- Installation of new 48", 36" and 30" Trunk water mains
- Reconstruction and replacement of distribution water mains
- Reconstruction of combined sewers
- Private utility upgrades/interferences
- Reconstruction of curbs, sidewalk & roadway
- Installation of new traffic signals and street lighting

PROJECT LIMITS



Water main Work



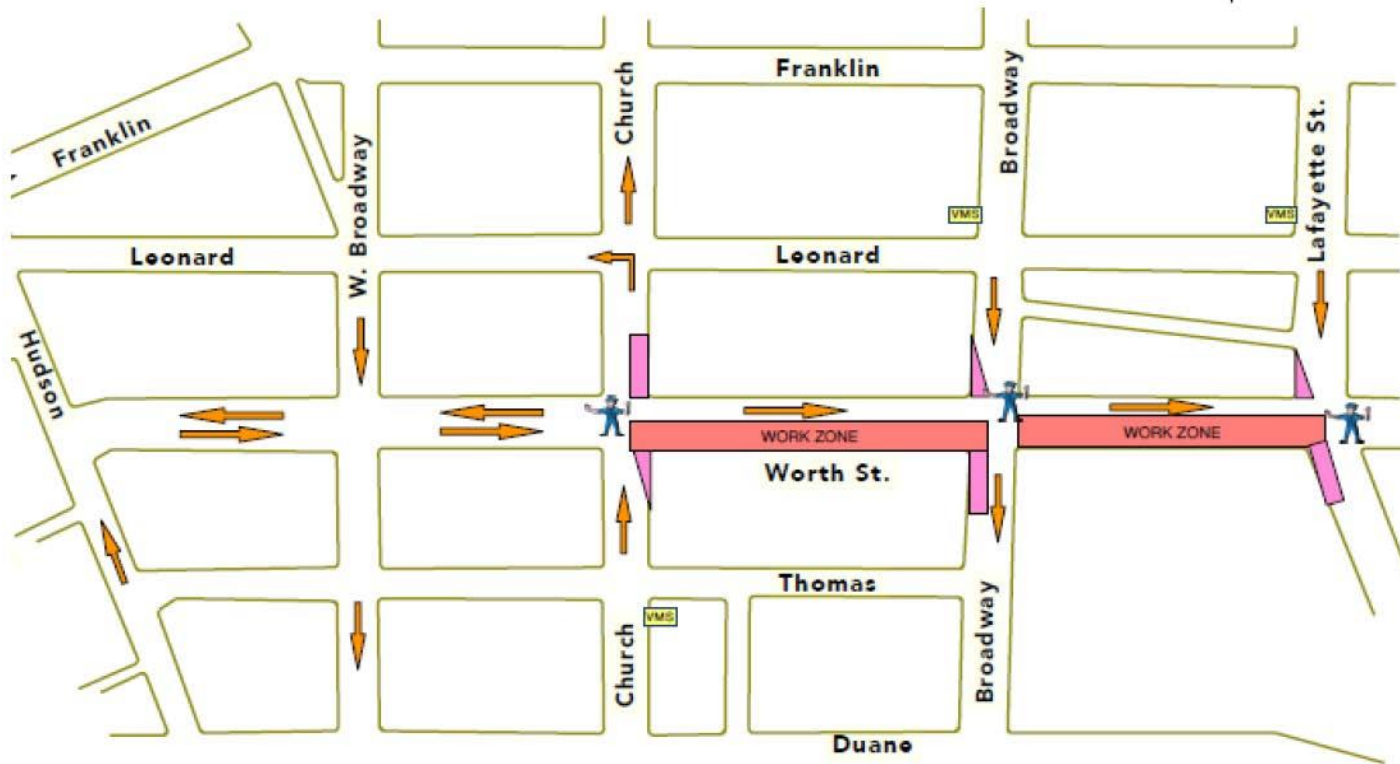
Water main Work



20" Water main
12" Water main

Start of Work

Expected to begin Monday May 2nd 2016 - Worth St. between Church St. and Lafayette St.



COMMUNITY IMPACTS & WHAT TO EXPECT

COMMUNITY IMPACTS

- Pedestrian access will be maintained at all times
- Temporary Street closures and / or limited access may be necessary
- Uniformed NYPD traffic agents assigned for traffic control & Crossing Guards for Pedestrian movement
- Sidewalk and/or loading dock access from the curb may be temporarily restricted while work is conducted (coordination will be arranged on a case by case basis)
- Parking may be temporarily restricted during construction
- Express, private and local bus stops may be temporarily relocated
- Garbage/Trash pick up may be affected

COMMUNITY IMPACTS CONT'D

Water Service Interruptions:

- 72-Hour Advance Advisory will be provided, followed by 24 hour confirmation/cancellation notice.
- Specific instruction will be provided prior to water shutoff
- If your water service is not restored within 3 hours of the indicated time on the Shutoff Notice, please contact the Community Construction Liaison (CCL) or 311 if after hours.
- Water Shut-downs are typically scheduled at night.

Special Needs:

Individuals with special needs should contact the CCL
DDC field staff will work specially with those individuals to minimize certain inconveniences

Quarterly Newsletter

RECONSTRUCTION NEWSLETTER
Office of Community Outreach and Notification

Manhattan

Spring 2016

Installation of Trunk Water Mains along Grand Street Project Phase II
Grand St. between Bowery and Essex St. Project # MED 609(806)

The New York City Department of Design and Construction (DDC) is managing a capital construction project MED609(806) along Grand Street between Broadway and Essex Street, including each intersection. DDC will install new trunk water mains, new traffic signs, street lighting, reconstruct distribution water mains, new roadway surfaces, curbs and sidewalks in certain locations, as well as, rehabilitate sewer, and upgrade private utilities. The entire project is anticipated to be completed by Spring 2017. Phase I has been completed. **Phase II final restoration is scheduled to begin in mid-April 2016.**

Proposed Work Schedule:
Spring 2016

Phase II Daytime work operations include:

- Trunk Water Main & Appurtenances
- Grand Street between Forsyth & Essex Streets
- Catch Basins & Drainage Facilities in & around the Intersection of
 - Allen & Grand Streets
 - Orchard & Grand Streets
 - Essex & Grand Streets

Phase II Nighttime work operations include:

- Final Restoration of Disturbed Curbs/Sidewalks & Construction of A New Concrete Base Roadway
- Grand Street between Bowery & Forsyth Streets

Work Completed to Date (Phase II)

1. **New Distribution Water Mains** in Grand Street between Bowery & Essex Streets
2. **New Gas Distribution System** in Grand Street between Bowery & Essex Streets
3. **New Drainage Facilities** approx. 80% complete in Grand Street between Bowery & Essex Streets
4. **Trunk Water Main Connection** in Essex Street
5. **New Trunk Water Mains** in Grand Street between Bowery & Forsyth Streets

Water Service Interruption
During the course of the project there will be service interruptions. To accommodate water main replacement, the existing water supply must be shut off by closing the valves at either end of the section. Advance notice will be given for all planned interruptions. Water service will be restored at the end of the work day.

One-way Traffic on Grand St.
Expect one-way eastbound traffic on some parts of Grand St. throughout Phase II of the project. Detour signs and directions will be posted during the course of this construction.

Bill de Blasio
Mayor
Dr. Fancisco Peña-Mora
Commissioner

DDC Website
www.nyc.gov/tbc

DDC Video
www.nyc.gov/webuild


NYC DDC Department of Design and Construction

NYC New York City

NYC DDC New York City Department of Design and Construction



Trunk Water Main Trench in Grand Street between Orchard & Ludlow Streets.




New 96" Trunk Water Main in Grand Street between Orchard & Ludlow Streets.

Trash Collection
Proper trash collection can be a challenge on a project as large as this but if everyone is considerate, it can be managed with a minimum of disruption. Please pack your trash so as to not make it easy to break or spill over. Put it on the designated areas as close to collection bins as possible. If you use a private carrier, make sure that your carrier collects your trash in a timely fashion. If you aren't sure where to bring your trash, please contact your CCL.

Community Construction Liaison (CCL)
The DDC has assigned **Ms. Nisha Sin** of JED/HAKS Engineers (joint venture), as the Community Construction Liaison (CCL) for this project. Please contact **Nisha** for any project related inquiries/ concerns you may have.
Phone: 646-412-3502 Fax: 646-412-3513
Email: grancoc@nyc.gov
Field Office: 110 Lafayette Street, 1st Floor, NY, NY 10013

Newsletter Distribution
Construction newsletters for this project are distributed regularly within the project area and to Community Board #3 - Manhattan.

Weekly Look Ahead



NYC Department of
Design and
Construction

Office of Community Outreach + Notification

Weekly Construction Bulletin

Grand Street Trunk Water Main Project Phase II
Phase II: Grand Street between Bowery & Essex Street
Manhattan

Project #MED 609(606)

Friday, 4/8/2016

The following is an anticipated work schedule for the upcoming week. However, due to unforeseen field and weather conditions, it may become necessary to change some scheduled work locations, operations and dates. **Please note, parking may be restricted in work area.**

Date	Location	Operation	Work Hours
4-11-16 to 4-15-16	Intersection of Eldridge & Grand Streets	Construction of Trunk Water Main Connection Chamber	7:00AM to 5:00PM (Day work)
4-11-16 to 4-15-16	Grand Street E/T Forsyth & Orchard Streets	Backfill Trenches & Place Temporary Asphalt	7:00AM to 5:00PM (Day work)
4-11-16 to 4-15-16	Grand Street E/T Orchard & Essex Streets	Construction of 36" Trunk Water Main including Welding & Coating Backfill Trenches & Place Temporary Asphalt	7:00AM to 5:00PM (Day work)
4-15-16	Grand Street E/T Allen & Essex Streets	Removing Construction Barrieadees Restoring Two Ways Traffic Temporarily	7:00AM to 5:00PM (Day work)

NOTES:

- ❖ **SCHEDULE IS SUBJECT TO CHANGE:** Contractor schedule is subject to change and there will be minor incidental work that would take place in various locations.
- ❖ **WATER SHUT-OFF NOTIFICATIONS:** In addition to a 72-hour Advisory, a prior 24-hour CONFIRMATION or CANCELLATION will be distributed/posted to any/all affected location(s).
- ❖ **NO PARKING SIGNS:** will be distributed/posted 72-hours prior to the temporary elimination of street parking. Please observe posted parking regulations in construction areas.

FOR FURTHER INFORMATION: Contact Nikita Sin, the Community Construction Liaison at (646) 412-3502 or grandstreet@gmail.com

We appreciate your cooperation and thank you for your patience while we rebuild NYC's infrastructure.

BILL DE BLASIO,
MAYOR
DDC WEBSITE: WWW.NYC.GOV/DDC

DR. FENCSKY PEÑAL-MORA,
COMMISSIONER
DDC VIDEO: WWW.NYC.GOV/WFBUILD

Advisory Notice



DDC OFFICE OF COMMUNITY OUTREACH & NOTIFICATION

COMMUNITY ADVISORY NOTICE

INSTALLATION OF TRUNK WATER MAIN ON GRAND STREET
PROJECT # MED 609(606)

Borough: Manhattan

March 29, 2016

Street Closure

Some Curbside Parking and Loading/Unloading Restricted

Orchard Street, Hester to Grand Streets

Beginning on/about Wednesday, March 30, 2016
Monday - Friday from 7:00AM to 4:00PM

Please be advised beginning on/about Wednesday, March 30, 2016 and continuing for approximately 2 weeks (weather and field conditions permitting), vehicular thru traffic will be prohibited during work hours scheduled from 7am to 4pm. Emergency and special needs local traffic vehicles access will be maintained. Some curbside parking and access to loading docks will be restricted during work hours. These changes are necessary to facilitate the performance of required trunk water main work as part of the Grand Street Trunk Water Mains Project Phase II, performed by the New York City Department of Design and Construction (DDC). **Detour signs and directions will be posted during the course of this construction.** During work hours, flaggers will be on site to aid with pedestrian and motorist safety.

COMMUNITY IMPACTS:

- Typical work hours will be Monday - Friday from 7:00AM to 4:00PM.
- Vehicular thru traffic will be prohibited during work hours
- Detour Signs will be posted.
- Some Parking restrictions will be in effect.
- Emergency vehicle access will be maintained.
- Pedestrian access to buildings will be maintained at all time.

If you have any questions, concerns, special needs or would like to be added to the electronic Neighborhood Notification Network (N3N) list, please contact the Community Construction Liaison (CCL), Ms. Nikita Sin at (646) 412-3602 or email grandstreet@mail.com. During non-construction hours, please contact the NYC Government Callous and Information Hotline 3-1-1.

We appreciate your cooperation and thank you for your patience while we rebuild NYC's infrastructure.

For more information
please contact
DDC Website: www.nyc.gov/ddc

For more information
contact
DDC Website: www.nyc.gov/ddc

KEEPING YOU INFORMED

Elizabeth Baptiste will be Community Construction Liaison (CCL). Ms. Baptiste will be responsible for keeping the community engaged & informed by:

- Being the first point of contact (Outreach, Communication)
- Identifying & Coordinating (Attempt to mitigate construction impacts)
- Providing regular updates in advance (Stakeholders may better plan)

CCL contact information:

Name: Elizabeth Baptiste
Email: WorthstreetCCL@gmail.com
Field Office: 40 Worth Street, Suite 821
Telephone : (646) 559-2706

DDC Website: www.nyc.gov/ddc

DDC Video: www.nyc.gov/webuild

During Non-Working hours, please call 311 and give the Project ID: HMMWTCA7E

Manhattan Community Board 1 Committee Reports

Financial District – S. Cole

- 1) 70 Pine Street, Board of Standards and Appeals application for a special permit to allow a physical culture establishment – Resolution
- 2) 99 Church Street, Board of Standards and Appeals application for a special permit to allow a physical culture establishment – Resolution
- 3) 10 Murray Street, application for restaurant wine & beer license for Vidhan Bhatt Inc. – Resolution
- 4) 20 Maiden Lane/51 Nassau Street, application for hotel/restaurant liquor license for HCIN Maiden Hotel Lessee, LLC d/b/a Holiday Inn Wall Street – Resolution
- 5) 120 Church Street, application for restaurant wine, beer & cider license application for SRG Church Street LLC d/b/a Schnippers – Resolution

Manhattan Community Board 1 Committee Reports

Financial District – S. Cole

- 6) 32 Pearl Street, application for hotel liquor license for 44 Pearl Street Lessee LLC, Hersha d/b/a Hampton Inn Pearl Street – Resolution
- 7) 75 Maiden Lane, application for restaurant liquor license for an entity to be formed by Jason Francisco – Resolution
- 8) The Battery Conservancy – Report
- 9) Restoration of Vietnam Veterans Plaza – Report



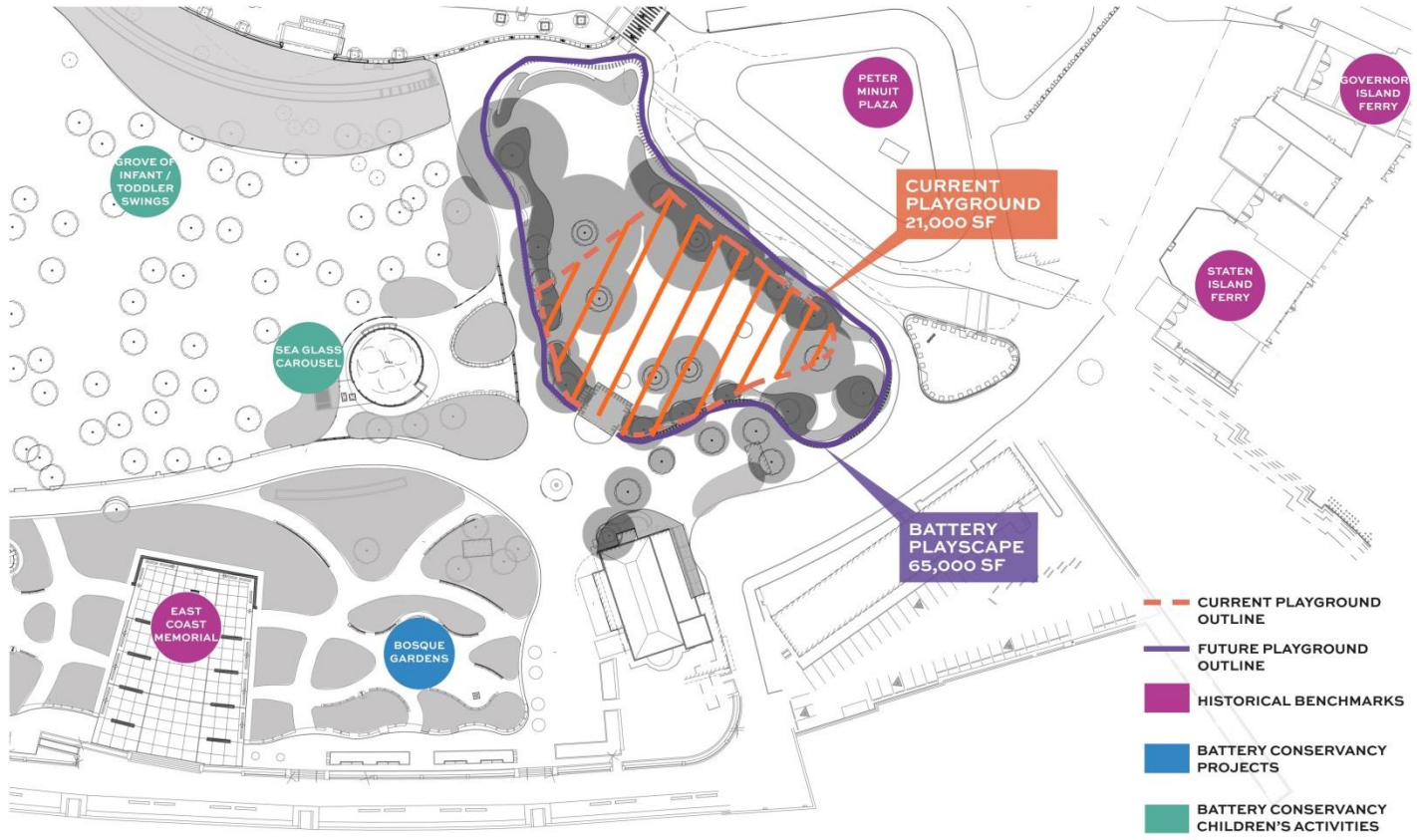
PRESENTATION TO

CB1 Financial District Committee

April 6, 2016

THE BATTERY

PLAYGROUND PRESENT & FUTURE



CURRENT PLAYGROUND



BATTERY PLAYScape I



ADVENTURE BLUFFS

PROGRAM + SURFACE OVERVIEW





DRAW UP A CHAIR



- Total Registrations: 852
- Total Completed Submissions: 679
- Total number of people engaged overall: 1,561
- Numbers of Countries Represented in Completed Submissions: 15

4 Tenant or squatter? Battle over a Leonard Street building

33 At age 87, joys and struggles of Down Town Glee Club

35 Gallery turned into walk-in camera on Chambers St. >>



THE TRIBECA TRIB

Vol. 21 No.2

www.tribecatrib.com

OCTOBER 2014

HOW DO THESE CHAIRS SIT WITH YOU?

One will be picked this month as the design for the hundreds of chairs to grace Battery Park's big oval lawn. Try them out yourself, and vote. (PAGE 20)

THE WALL STREET JOURNAL

Home World U.S. Politics Economy Business Tech Markets Opinion Arts Life



New Invention Rules Force Pfizer to End Deal With Allergan



U.S. Unveils Retirement-Savings Revamp, but With a Few ...



U.S. Sues to Block Halliburton From Acquiring Baker Hughes



Pt Gets 1 Trum

URBAN GARDNER

A Chair for the Battery

A Competition Is Under Way To Create a New Chair for Battery Park



By RALPH GARDNER JR
June 19, 2013 9:41 p.m. ET

If you're anything like me—and, for your sake, I hope you're not—you spend a fair amount of time wondering whether we're alone in the universe. I'm pretty sure we're not. They only just started looking, and they're finding new planets all over the place.






See, Sit, Select

Exhibition at Castle Clinton

over 4,000 comments





THE
BATTERY
CONSERVANCY

THE
BATTERY
FESTIVAL
FAIR
JUNE 25-26
2016



THE BATTERY

A WORLDWIDE STAGE WHERE NEW YORK GATHERS

Since 1994, The Battery Conservancy has led the complete rebuilding of NYC's oldest waterfront park, The Battery — 25 acres at the tip of Manhattan, with an urban farm and vast perennial gardens driving biodiversity and placemaking.

IN 2016 WE OPEN
THE BATTERY OVAL,
A TWO-ACRE GREEN
COMMONS WHERE
NEW YORK WILL GATHER.

The Battery Conservancy creates **The Battery Festival Fair** to official open the new 2-acre lawn, **The Battery Oval**.

The Fair will feature over 100 small businesses and creative enterprises in horticulture, agriculture, food production, and crafts.



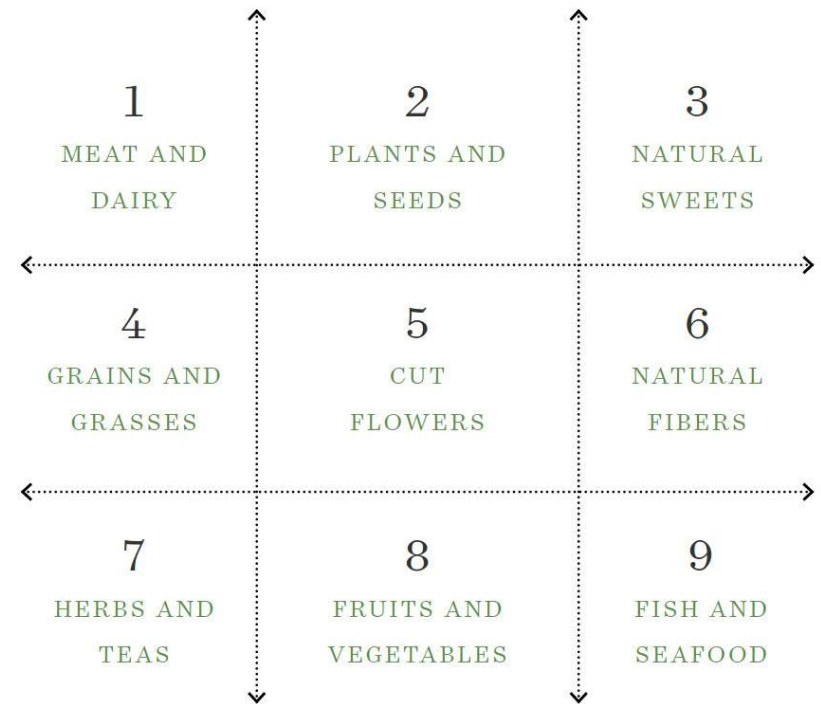
The Fair showcases the bounty of **our region's thriving ecosystems.**

Agriculture and **horticulture** find common ground in a commitment to **biodiversity.**

Exhibitors and vendors are selected by The Battery Conservancy to demonstrate connections between **natural production** and **human consumption.**



THE BATTERY MIDSUMMER MARKETS





The Battery Conservancy's operations staff built a full scale prototype as a design tool.

THE BATTERY FESTIVAL FAIR
JUNE 25 & 26 2016



An estimated **60,000 fair attendees** will stroll the Oval as they see, taste, and learn about innovations in agriculture, horticulture, food production, and crafts in a novel setting – a grand installation, one-seventh of a mile.




100,000
SeaGlass
tickets

14.2
million
tourists

266,000
employees

60,000
residents



**RECONSTRUCTION OF ELECTRICAL, FOUNTAIN
MECHANICAL COMPONENTS, AND DECORATIVE
METALS IN VIETNAM VETERANS PLAZA
DUE TO HURRICANE SANDY,
CONTRACT M046-114M**

Community Board Review
April 06, 2016

MAGARY AIME, PROJECT MANAGER
JEAN-CLAUDE EDOUKOI, PROJECT ENGINEER
WHITNEY TALCOTT, LANDSCAPE ARCHITECT

Parks

Memorial Site History

May 1985 - Memorial dedication

1999 - *Friends of the Vietnam Veterans Plaza (FVVP)* established to “redesign, fund and rebuild the plaza”

2001 – \$7 M restoration and rededication (public-private coalition)

Oct 2012 - Severe damage to the electrical system and fixtures due to Hurricane Sandy

Spring 2016 – Memorial Wall conservation sponsored by FVVP

Ongoing - 55 Water Street/ New Water Street Corporation maintains the site



Parks



A. FEMA funded in-kind Replacement of:

- Lighting system
- Fountain mechanical equipment
- Decorative metals (handrails, guardrails, signs)
- Stonework (granite)
- Map and railings

B. FEMA funded Hazard Mitigation:

- Lighting in the Walk of Honor raised 6” above flood level
- Ground plane lighting in Walk of Honor to be removed and replaced with granite to match exist.

Memorial Wall conservation work not included in Scope



NYC Parks



Ground Plane Lighting (to be removed and replaced with granite to match exist.)



NYC Parks



NYC Parks



Planter Lighting

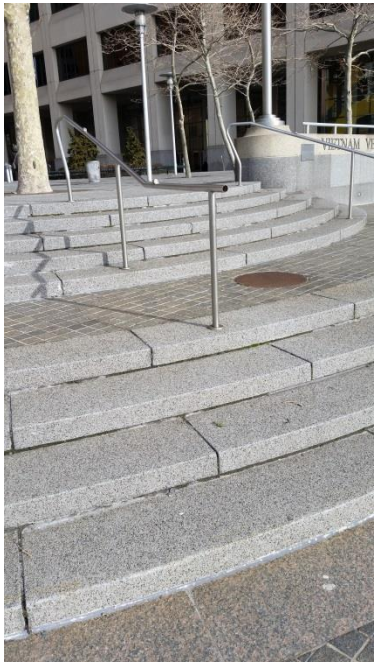


NYC Parks



Flagpole Lighting- South Street Entrance





The Map

South Street Entrance - ramp



NYC Parks

Manhattan Community Board 1 Committee Reports

Landmarks – B. Ehrmann

- 1) 70 Pine Street, application for signage – Resolution
- 2) 37 Harrison Street, application to legalize and bring into code compliance back porch - Resolution
- 3) Remembering Peter Stanford, founder of South Street Seaport Museum – Resolution
- 4) Historical Map of Lower Manhattan – Report
- 5) 346 Broadway Clock Tower – Report

70 Pine Street



CORNER OF PEARL STREET AND CEDAR STREET

ALL SIGNS SHOWN FOR LOCATION AND PROPOSED SIZE ONLY

STEPHEN JACOBSON GROUP PC

Architect and Planner
300 Park Avenue South, 20th Floor
New York, NY 10010
P: 212.693.0100



70 Pine Street
New York, NY

DATE: 04-19-10

DRAWING FOR:
PROPOSED SIGNS LOCATION
AT PEARL AND CEDAR ST.

A-23

37 Harrison Street



Peter Stanford



MARKING TIME

LOWER MANHATTAN THEN AND NOW

A Historical Map
of Lower Manhattan

Abby Suckle

CB 1

14 April 2016



346 Broadway Clock Tower



Manhattan Community Board 1 Committee Reports

Youth & Education– T. Joyce

- 1) Breakfast in the Classroom – Report
- 2) School Crossing Guard Letter from Assemblymember Deborah Glick – Report

Manhattan Community Board 1 Committee Reports

Battery Park City – A. Notaro

- 1) Wagner Park redesign and community input – Resolution
- 2) Public Comments at Battery Park City Authority Board Meetings – Resolution
- 3) The Skyscraper Museum – Report
- 4) BPCA permit request for 2016 – Report
- 5) Allied Barton Ambassadors – Report
- 6) BPC Community Center Affordability – Report
- 7) Zoning for Morton Street School – Report
- 8) Response to NYS Homes and Community Renewal FOIL request – Report

Manhattan Community Board 1 Old Business

Manhattan Community Board 1

New Business

Manhattan Community Board 1 Adjournment

Thank you