



The City of New York

Manhattan Community Board 1

Monthly Board Meeting

Wednesday, December 19, 2018

6:00 PM

PS 397 Spruce Street School

12 Spruce Street

(Photo ID is required to enter building)

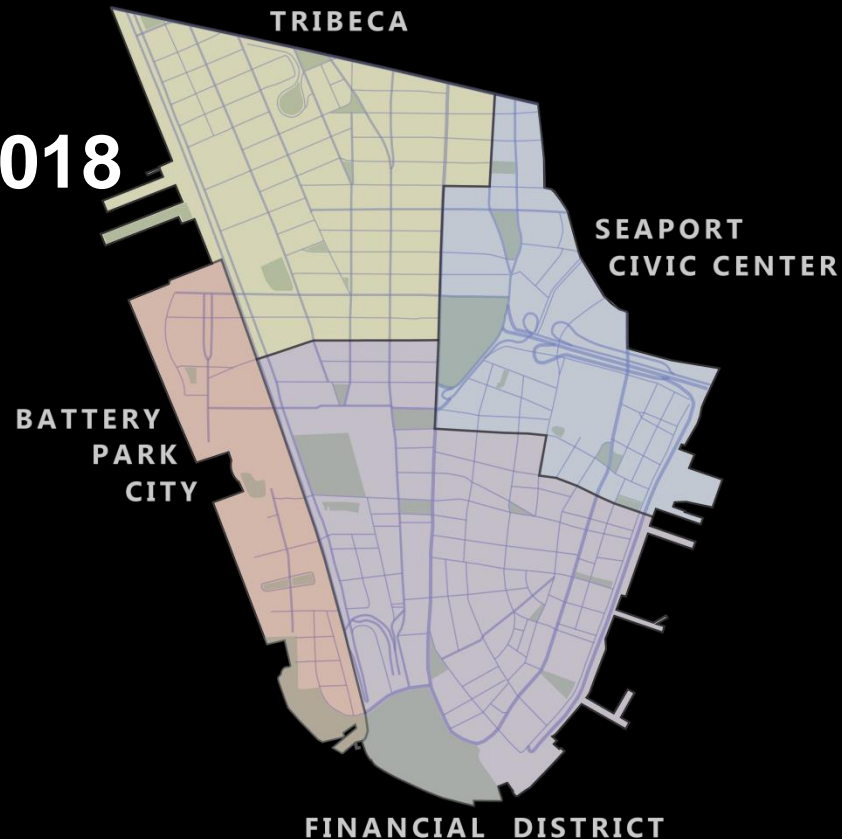
Anthony Notaro, Jr., Chairperson

Lucian Reynolds, District Manager

Lucy Acevedo, Community Coordinator

Diana Switaj, Director of Planning and Land Use

Ramesh Beharry and Nazija Akter, Consultants



CB1's OFFICE CONTACT

Manhattan Community Board 1
1 Centre Street, Room 2202 North
New York, NY 10007
Tel: (212) 669-7970

Website: nyc.gov/mcb1

Email: Man01@cb.nyc.gov



Manhattan Community Board 1

Public Session

Comments by members of the public (6 PM to 7 PM)
(Please limit to 1-2 minutes per speaker to allow everyone to voice their opinions)

Manhattan Community Board 1

Business Session

- Adoption of November 2018 minutes
- District Manager's Report – L. Reynolds
- Chairperson's Report – A. Notaro, Jr.



Brooklyn Bridge Esplanade Community Meeting

January 8, 2019

6:30-8:00 p.m.

**Manhattan Municipal Building
Office of the Borough President**

1 Centre Street, 19th Floor
New York, NY

As part of its ongoing efforts to improve the East River waterfront, New York City Economic Development Corporation (NYCEDC) plans to reconstruct the Brooklyn Bridge Esplanade between Peck Slip and Catherine Slip. NYCEDC is collecting information from area residents and esplanade users to determine which esplanade improvements would best serve the community. Come meet the project team and share your ideas for the Brooklyn Bridge Esplanade!

Can't attend? Share your ideas using our online survey: bit.ly/BBESurvey

Refreshments will be served and all ages are welcome. Spanish and Chinese interpretation will be available.



This project is made possible by a grant from the Lower Manhattan Development Corporation, which is funded through Community Development Block Grants from the U.S. Department of Housing and Urban Development.

Andrew M. Cuomo, Governor • Bill de Blasio, Mayor

NYCEDC



Manhattan Community Board 1

Chairperson's Report
December 19, 2018

Chair Report – *What's Happening*

- **PS150 Victory and Challenge**
 - *Thanks to Tricia Joyce and others*
- **Rebalance Committee Assignments**
 - Attendance is a major issue
 - May need adjustments
- **District Needs Statement & Budget Requests Published**
- **HUD release funds for Battery Play Area**
- **PATH repairs and weekend closures for 2 years!**
- **Neighborhood Support Team**
 - Impact of overdevelopment
 - Sanitation – Traffic – Schools seats – Etc.

Chair Report – PS 150



Chair Report – *Priorities*

- **Aligning & Tracking Budget Requests for Results**
 - Urban Fellow project will address
 - Budget Task Force or Committee Process
- **Resiliency**
 - Pushing the CB1 needs – letters, resolutions and Elected Officials
 - ***Subcommittee vs. standing committee***
 - ***Environmental Protection***
- **Manhattan Detention Center (Rikers Island closure)**
 - Meeting with Mayor 12/18/19
- **Charter Revision Task Force**
- **Street Co-naming Working Group will launch**

Chair Report – SuperTalls Impact and Planning



Chair Report – Seaport Tree Lighting



Manhattan Community Board 1 Committee Reports

Street Fair Task Force - D. Charkoudian

- 1) Sponsorship of Street Fairs for Fundraising by CB 1 in 2019 and renewal of task force task force – Resolution
- 2) Outcome of 2018 and upcoming 2019 events – Report

Manhattan Community Board 1 Committee Reports

Landmarks & Preservation – J. Friedman

1) 181 Front Street, proposal to add corporate sign – Resolution

181 Front Street – Existing Conditions



1 Existing Condition Photographs - Front Street



2 Existing Condition Photographs - John Street

181 Front Street – Proposed Conditions



① Proposed Conditions - Front Street



② Proposed Conditions - John Street

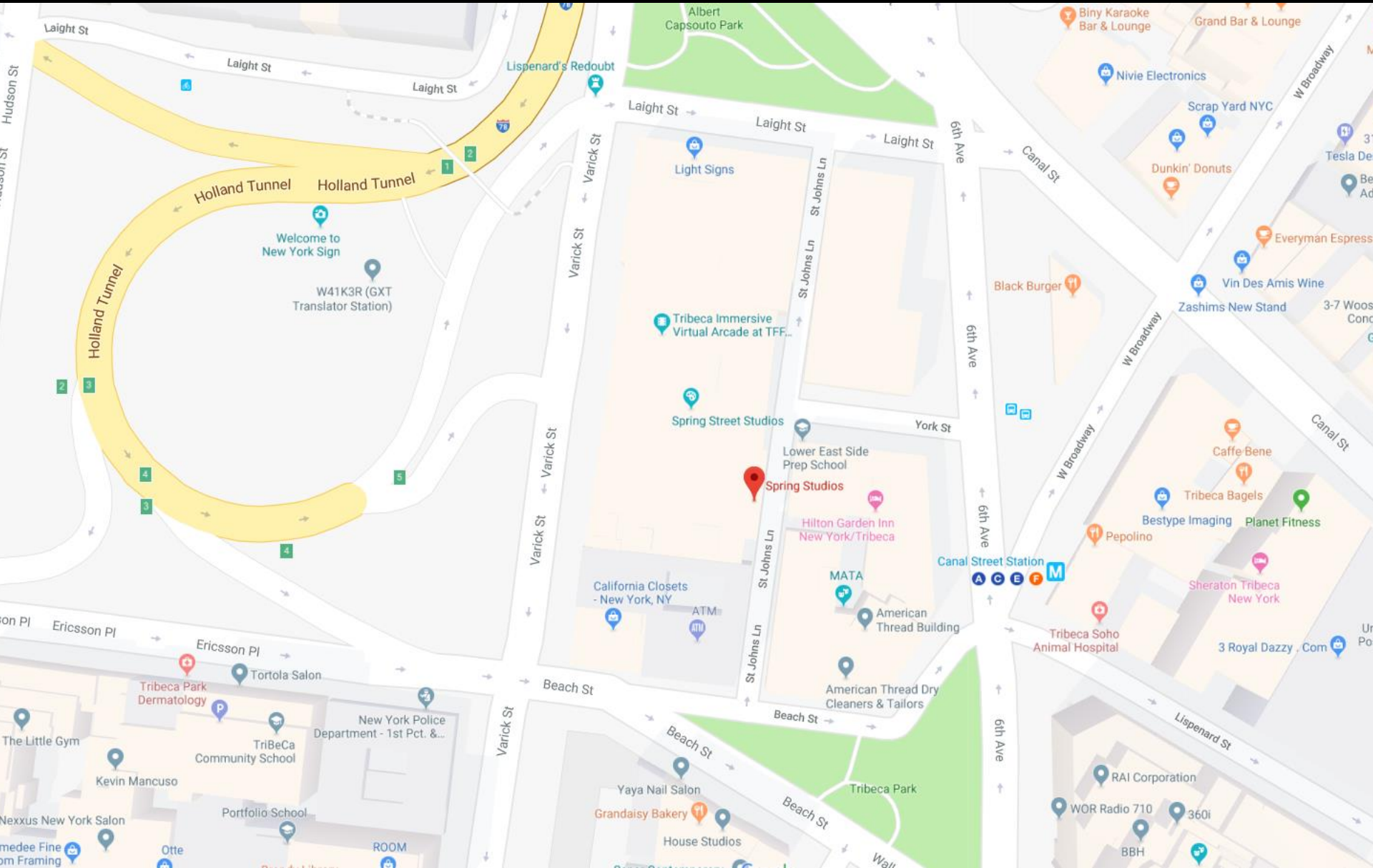
Manhattan Community Board 1 Committee Reports

Transportation & Street Activity Permits – R. Thomas

- 1) Street Activity Permit Application for New York Fashion Week: The Shows; 9:00 AM, Thursday, February 7, 2019 – 9:00PM, Wednesday, February 13, 2019; various locations throughout Tribeca – Resolution
- 2) Street Activity Permit Application for Stephen Siller Tunnel to Towers 5K Run/Walk; Sunday, September 29, 2019; 7:00AM – 3:00PM; Vesey Street between North End Avenue & West Street – Resolution
- 3) Community Board 1 Street Co-Naming Guidelines – Report
- 4) Pine Street traffic calming – Report

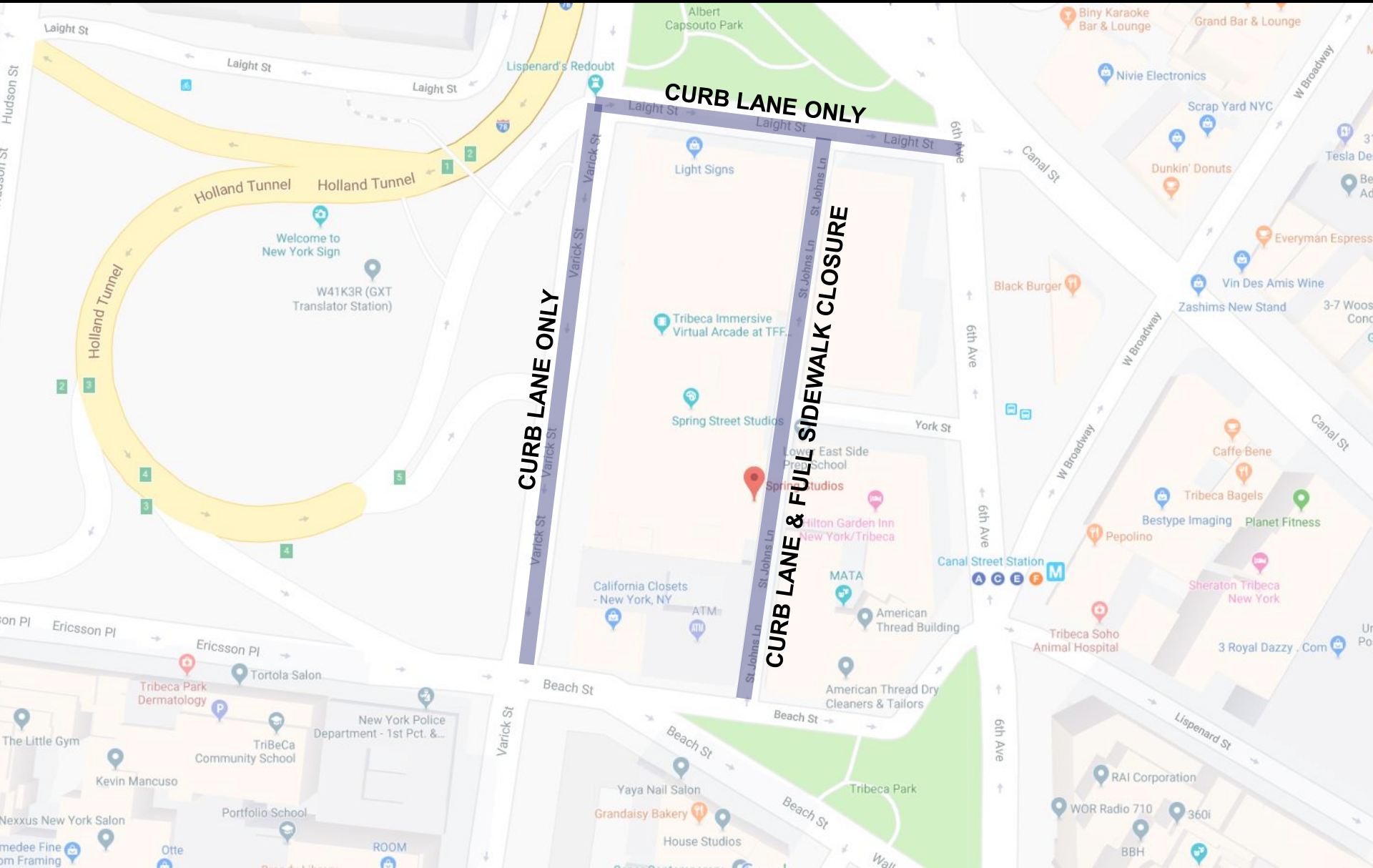
NY FASHION WEEK: THE SHOWS

2/7/2019 – 2/13/2019



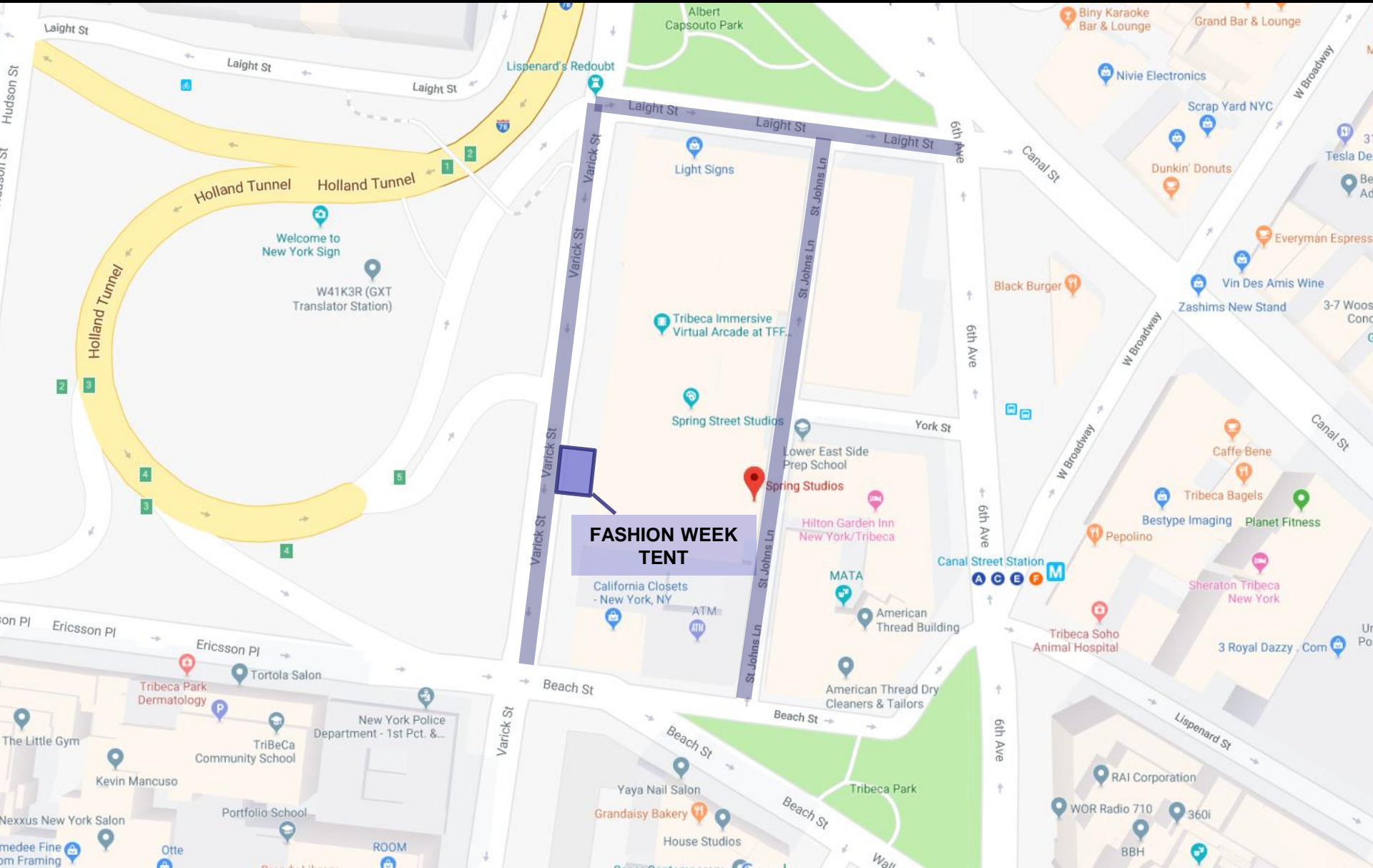
NY FASHION WEEK: THE SHOWS

2/7/2019 – 2/13/2019



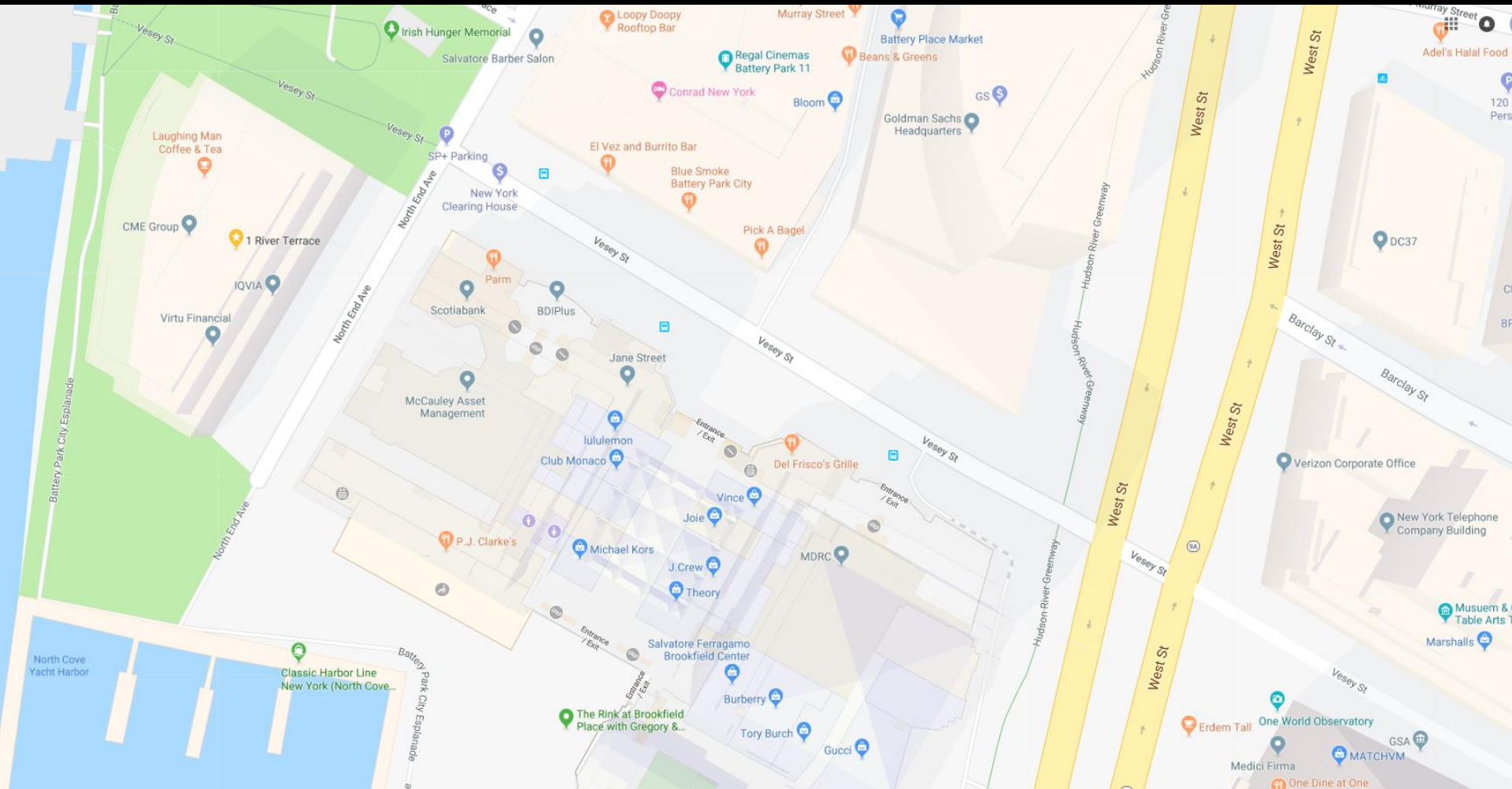
NY FASHION WEEK: THE SHOWS

2/7/2019 – 2/13/2019



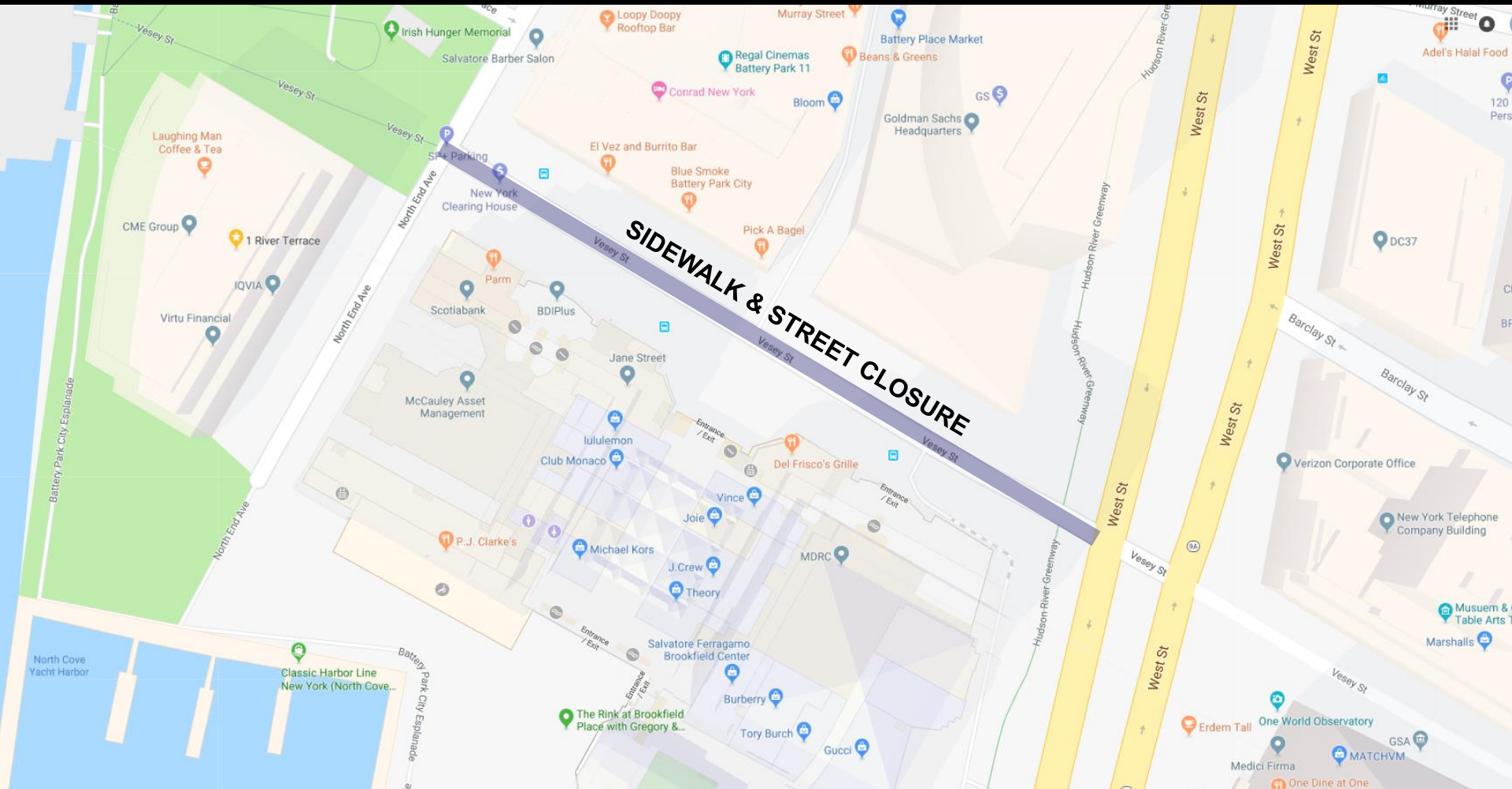
STEPHEN SILLER TUNNEL TO TOWERS 5K RUN/WALK

9/29/2019



STEPHEN SILLER TUNNEL TO TOWERS 5K RUN/WALK

9/29/2019



Manhattan Community Board 1 Committee Reports

Transportation & Street Activity Permits – R. Thomas

- 1) Street Activity Permit Application for New York Fashion Week: The Shows; 9:00 AM, Thursday, February 7, 2019 – 9:00PM, Wednesday, February 13, 2019; various locations throughout Tribeca – Resolution
- 2) Street Activity Permit Application for Stephen Siller Tunnel to Towers 5K Run/Walk; Sunday, September 29, 2019; 7:00AM – 3:00PM; Vesey Street between North End Avenue & West Street – Resolution
- 3) Community Board 1 Street Co-Naming Guidelines – Report
- 4) Pine Street traffic calming – Report

Manhattan Community Board 1 Committee Reports

Battery Park City – T. Meltzer

- 1) South Battery Park City Resiliency Project – Resolution
- 2) Battery Park City Resident Representation on Hurricane Maria Memorial Commission – Resolution
- 3) Gateway Plaza Affordability – Report
- 4) Battery Wayfinding Signage – Report
- 5) Port Authority 2019 Ferry Expansion – Report

TWO TWELVE + ARUP + INSIGHT CIVIL

Battery Park City Wayfinding and Signage

December 05, 2018

PROJECT GOALS

Create a simple, strong, and memorable sign system for Battery Park City that will:

- Create a unified BPC public experience
- Respect the character of BPC
- Respond to the needs of the users of BPC
- Be easy to maintain and update

WHAT WE HEARD - RECAP FROM JULY CB1

Regulatory Signs

- Rules should be displayed prominently
- Use symbols to identify rules
- Don't just tell people what they can't do, instead offer alternative locations for specific activities

Bike Signs

- Signage should be prominent and highly visible
- Color should not be too bright

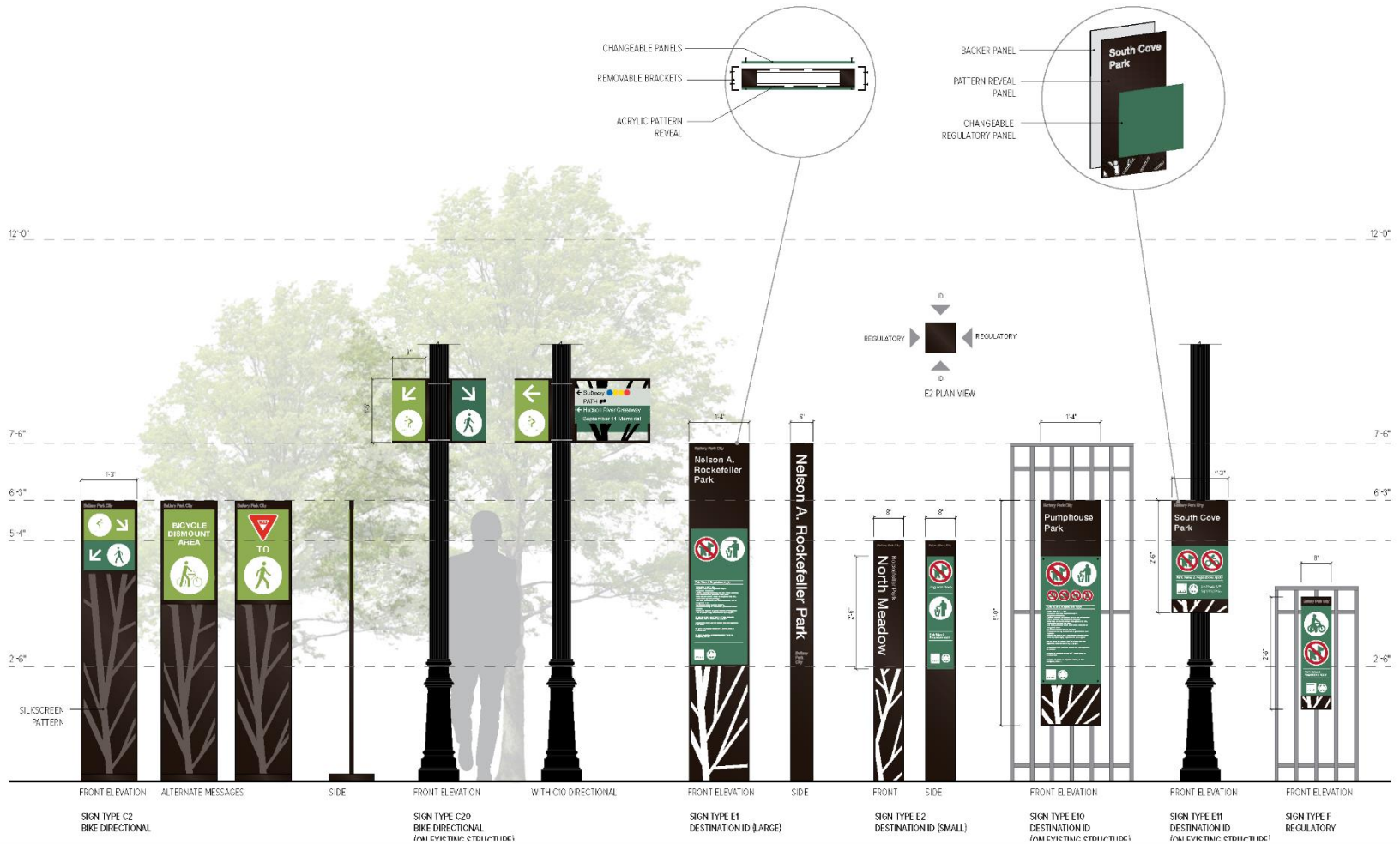
ADA/Accessibility

- Ensure sufficient contrast for those with impaired vision
- Study height of maps to provide consistency and visibility for shorter people/people in wheelchairs

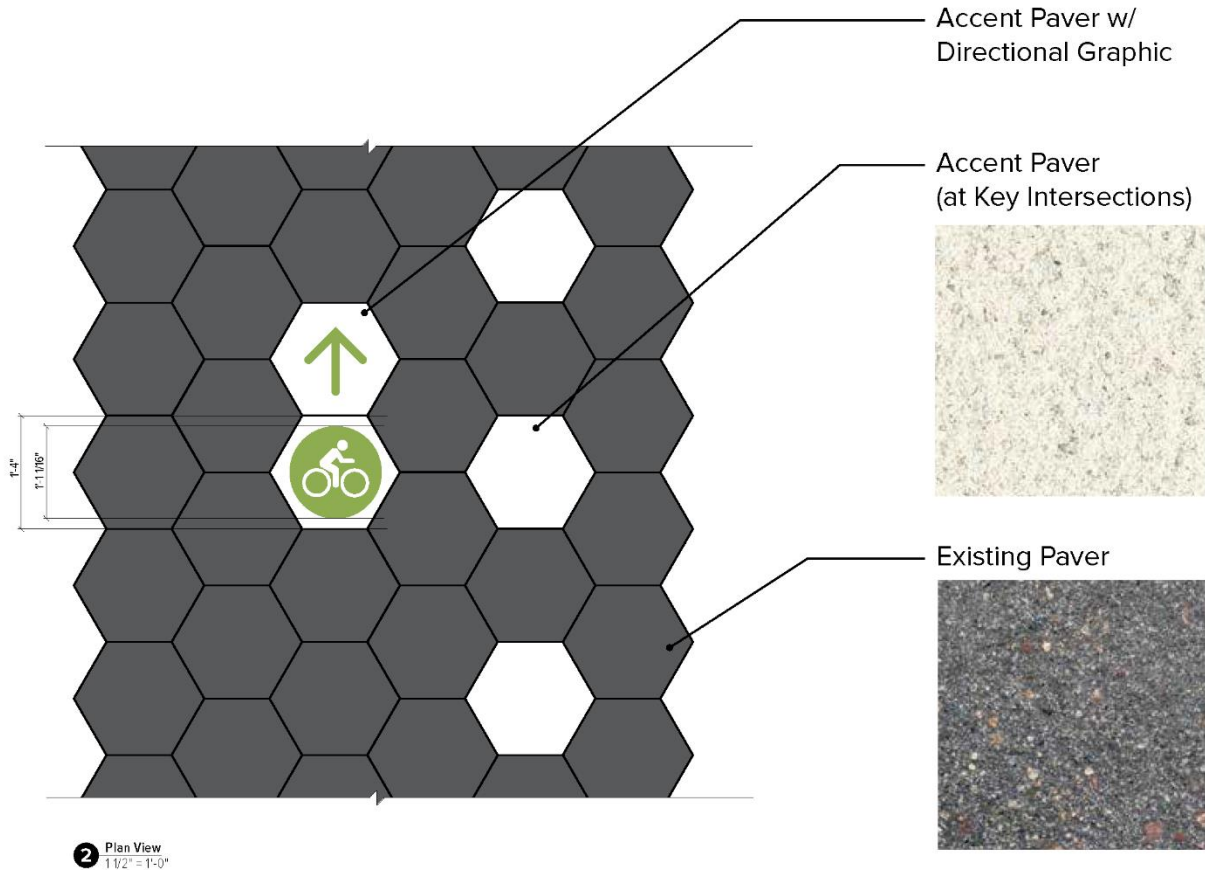
Additional Thoughts

- Overall concept was accepted
- Signage should direct to public restrooms
- Gateway sign design felt too commercial / leaf shape looks like surf boards
- Illumination could be helpful since it becomes dark early in winter and buildings block sunlight
- Wayfinding signage will not be digital, LinkNYC being considered for digital kiosks
- Consider connection back to NYC wayfinding signs

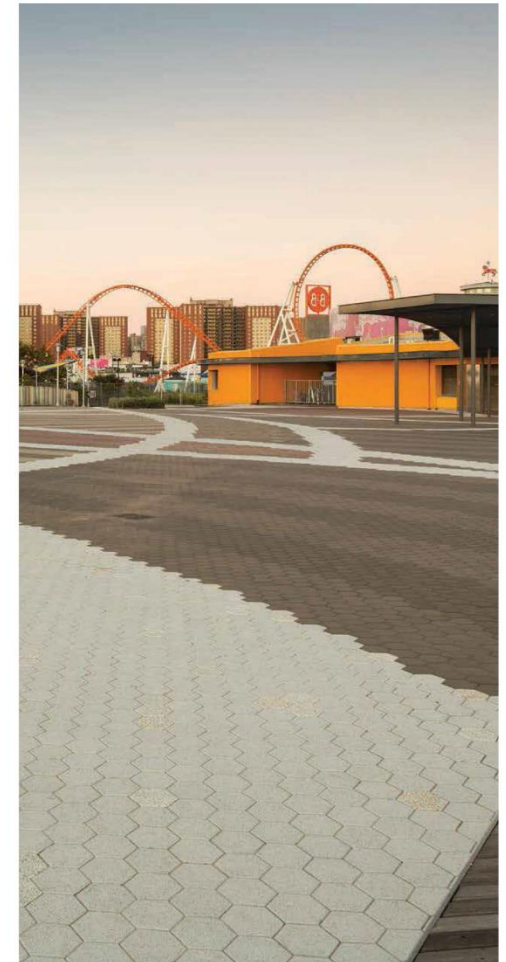
SIGN FAMILY OVERVIEW



PAVER STUDIES



Coney Island Precedent





PATH 2019 - 2020 Tunnel Outages

December 2018



**THE PORT AUTHORITY
OF NY & NJ**

Why Is This Work Happening?

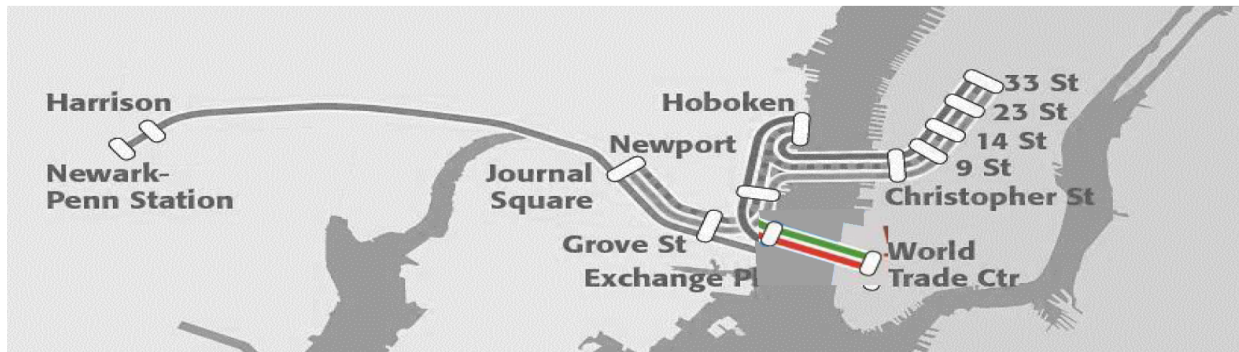
- During Superstorm Sandy in 2012, tunnels between Exchange Place and the WTC Station were flooded with thousands of gallons of ocean water.
- PATH temporarily repaired much of the damage in the weeks following the storm, but the salt has continued to corrode the steel and infrastructure of the tunnels.
- This work will replace the damaged infrastructure, leading to fewer failures, fewer delays and creating a safer, faster ride for our passengers.



Corroded rail and fouled ballast in tunnel (11/3/2012)

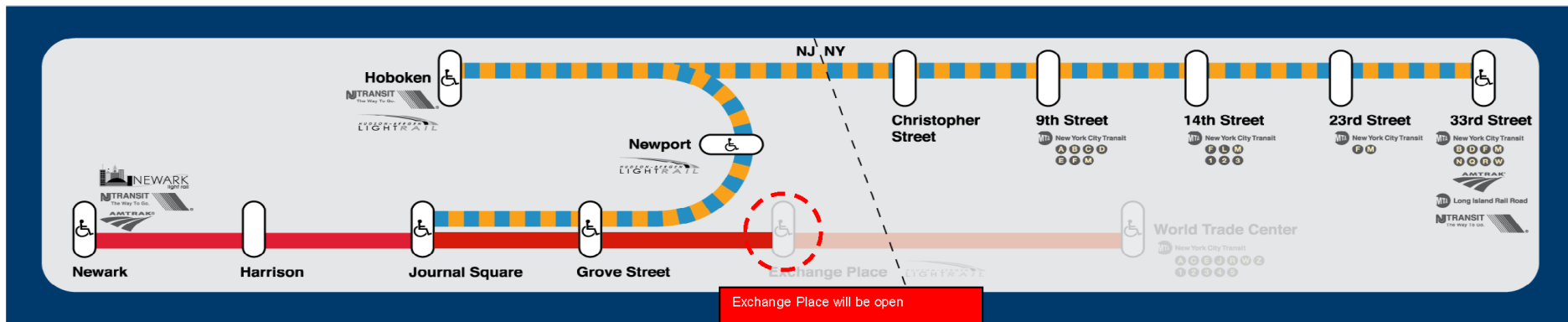
What is Happening?

- Starting January 5, 2019, for 45 weekends in 2019 and 45 weekends in 2020, PATH will be closing the tunnels which run from Exchange Place to World Trade Center, in order to repair latent damage caused by Superstorm Sandy.



- Tunnels will close at 12:01AM on Saturdays and re-open at 5:00AM on Mondays
- During these weekend closures, the World Trade Center Station will be closed to trains & passengers. Exchange Place will remain open for passengers to access rail service to Hoboken and 33rd St, as well as west towards Newark. 33rd St. and all other NY stations will remain open.

PATH's Service Plan



- Tunnels will close at 12:01AM on Saturdays and re-open at 5:00AM on Mondays.

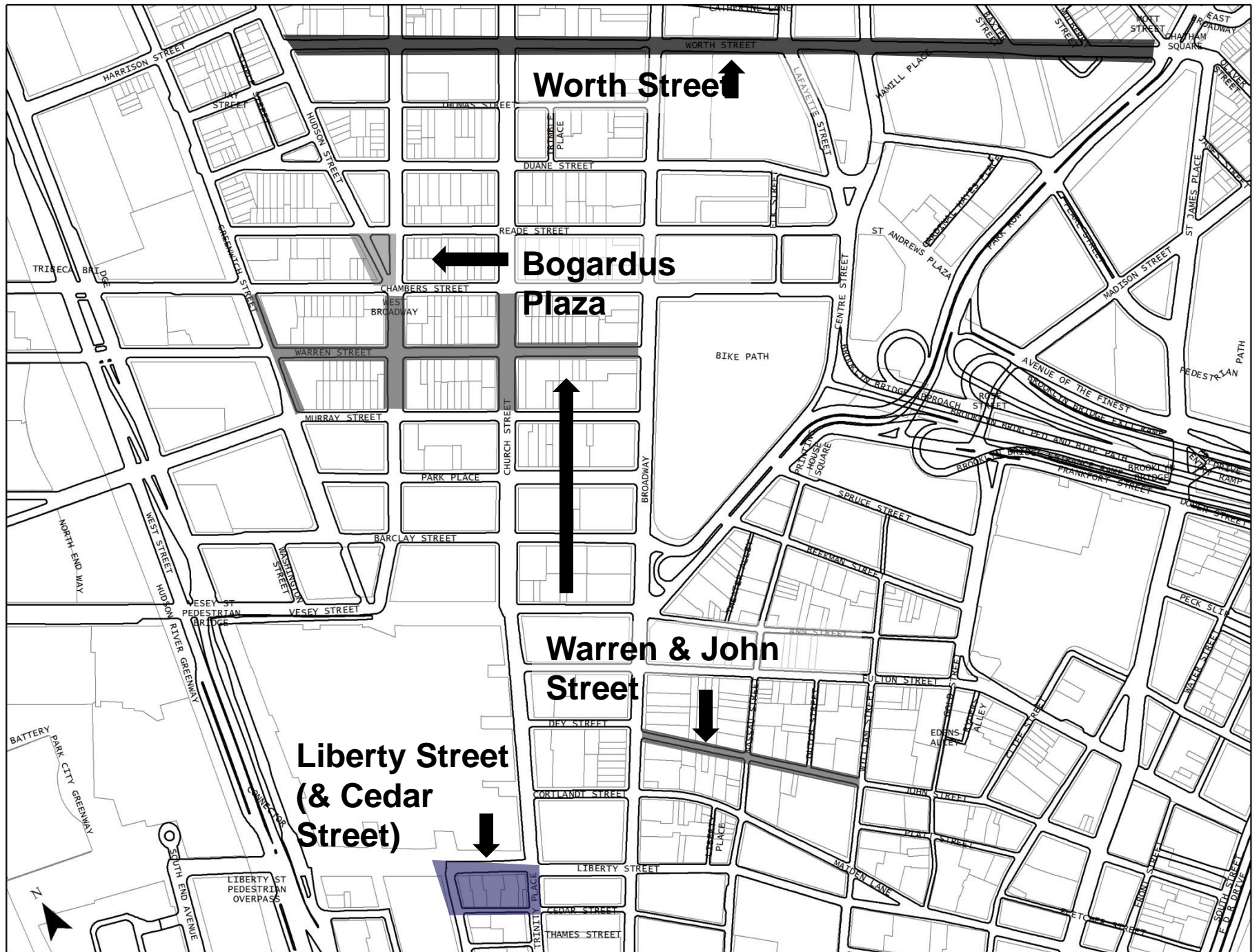
PATH's Service Plan – Ferry Operations

- Ferry Hours of Operation: 7AM – 11:30PM
 - Additional service added on the “shoulder” hours between 7-10AM and approx. 9-11:30PM
 - 30 min service between 7-8AM
 - 20 min service between 8AM-11:30PM
- Fleet:
 - NYW is committed to provide clean and quiet boats, equivalent to Tier III boats emissions standard
 - The following boats will NOT be utilized during weekend service: Fiorello LaGuardia, Yogi Berra, George Washington, and Abraham Lincoln.
- Landings Utilized:
 - NYW will utilize Slip 4 (Southwest slip) for all weekend service on the “shoulder” hours.

Manhattan Community Board 1 Committee Reports

Quality of Life & Service Delivery Committee – P. Moore

- 1) Department of Design and Construction Work in Community District 1 – Report



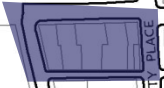
Worth Street ↑

Bogardus Plaza ←



Warren & John Street ↓

Liberty Street (& Cedar Street) ↓



Manhattan Community Board 1 Committee Reports

Waterfront, Parks & Resiliency Committee – P. Goldstein

- 1) Governors Island Athletic Field Request for Proposals – Resolution
- 2) City Hall Park – Report
- 3) South Battery Park City Resiliency Project – Report
- 4) Hudson River Park Trust Advisory Council – Report
- 5) Seaport Advisory Board – Report
- 6) Future of the New Market Building Site – Report
- 7) Public Art Issues – Report

Proposal for Temporary Installation – Michael Birnberg at Finn Square

Artist(s): Michael Birnberg
Title: *MOMENTMOVEMENTREVOLUTION*
Site: Finn Square, Manhattan
Dates: April 2019 – April 2020
Material: 10 ft. H x 6 ft. W x 6 ft. D (sculpture); 4 ft. H x 8 ft. W x 8 ft. D
Dimensions: Bicycle wheels, powder-coated aluminum, stainless steel
Weight: 1,000 lbs. (sculpture) + 400 lbs. (base) = 1,400 lbs. (total weight)

Summary of project:

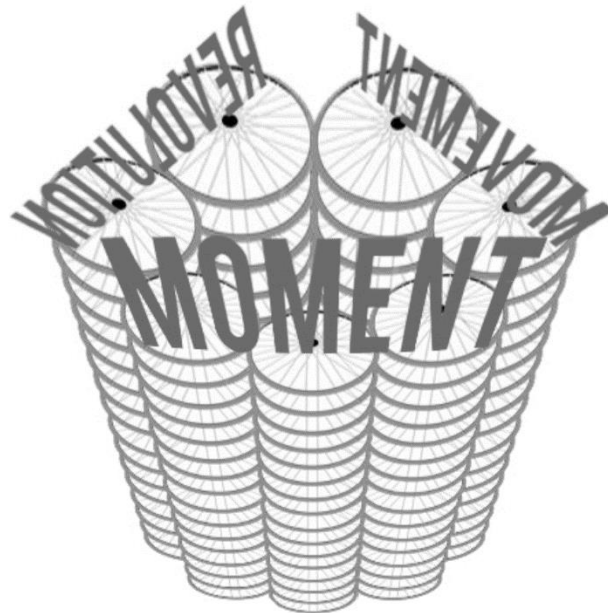
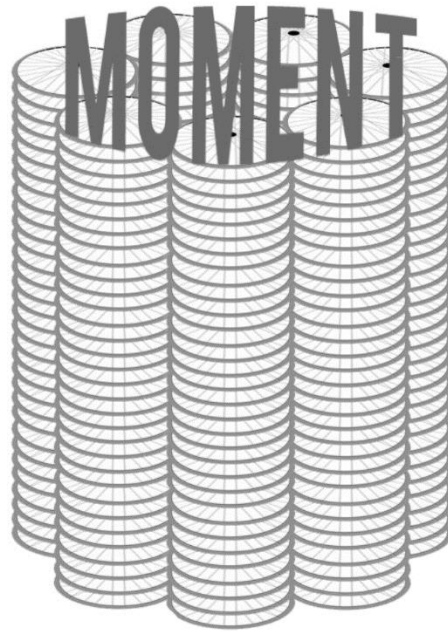
Artist Michael Birnberg proposes a tower of chromed bicycle wheels stacked 10' tall in a round shape, topped by the words Moment, Movement, Revolution in powder coated metal. The wheel represents the Movement of human effort and the Revolution of the histories of our time. Bicycles are icons of the cultural shift in our relationship with nature, technology, and social responsibility. The Revolution is lifted upon the wheels of change.

The wheels will be clear anodized aluminum with stainless steel spokes that should withstand the elements for the duration. The wheels are secured by an internal metal rod support structure and will be welded together so that they are not movable. The letters on top of the sculpture will be made of 1/4" powder-coated aluminum, attached to the inner tower frame and welded to the top row of wheels. The sculpture will be bolted to a stainless steel base which sits directly on the ground with a thin protective barrier (neoprene, rubber) beneath it to protect the plaza surface.

Proposed Site



Proposed Artwork



Manhattan Community Board 1 Committee Reports

Environmental Protection Sub-Committee – A. Blank

- 1) Superstorm Sandy 6th Anniversary – Resolution
- 2) Proposed City Council legislation regarding the reduction of greenhouse gases (Int. No. 1251, 1252, 1253) – Resolution
- 3) Port Authority of New York and New Jersey Resiliency Initiatives – Report
- 4) South Battery Park City Resiliency Project – Report



City Hall
New York, NY 10007

The New York City Council

Legislation Details (With Text)

File #:	Int 1251-2018	Version: *	Name:	Building energy efficiency grade.
Title:	A Local Law to amend the administrative code of the city of New York, in relation to a building energy efficiency grade			

File #:	Int 1252-2018	Version: *	Name:	Establishing a sustainable energy loan program.
Title:	A Local Law to amend the administrative code of the city of New York, in relation to establishing a sustainable energy loan program			

File #:	Int 1253-2018	Version: *	Name:	Commitment to achieve certain reductions in greenhouse gas emissions by 2050.
Title:	A Local Law to amend the New York city charter and the administrative code of the city of New York, in relation to the commitment to achieve certain reductions in greenhouse gas emissions by 2050			

Storm Recovery & Resilience at the **Port Authority of NY and NJ**

December 2018

Presentation to Manhattan Community Board 1

Holland Tunnel – Latent Salt Damage Repairs and Mitigation Program



Proposed Scope of Work

- Repairs and replacement of latent salt damage to mechanical, electrical, and plumbing systems
- Latent salt damage repairs to architectural, structural, and civil elements
- Evaluation of lighting system improvement alternatives
- Installation of flood protection at the tunnel portals and ventilation buildings
- Work will be packaged into two contracts

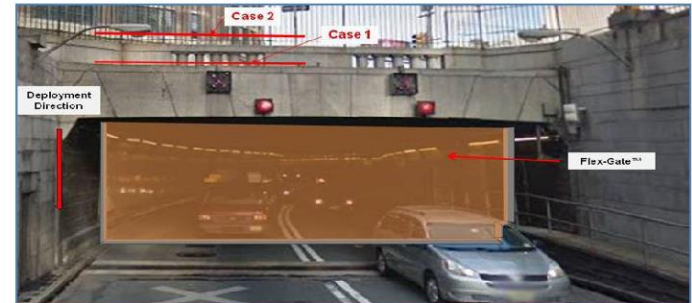
Impacts/Mitigation

- Overnight off peak full tube closures (one tube at a time) during construction for approximately four years
- Full tube closures expected to be limited to the hours of:
 - approximately 11 p.m. to 5 a.m. weekdays
 - approximately 11 p.m. to 9 a.m. weekends
- Contract flexibility to redirect work between tubes
- Most traffic will be diverted to the Lincoln Tunnel
- Local community and customer outreach plans will be developed to address tunnel closures and traffic management

Project Schedule

- Stage 3 Design : 4th Quarter 2017 – 2nd Quarter 2019
- Stage 4 Construction : 2nd Quarter 2019 – 4th Quarter 2024
 1. 1st Quarter 2020 – 4th Quarter 2021 NY-bound (South Tube) Full Closure
 2. 1st Quarter 2022 – 4th Quarter 2023 NJ-bound (North Tube) Full Closure

Perimeter Protection at NY Portals



World Trade Center Resilience Program Overview



WTC Resilience

- Layered resilience program
 - Bollard Protection System (BPS)
 - At-Grade Water Intrusion Protection System (WIPS)
 - Below Grade Water Intrusion Protection System (WIPS)
- \$150 million FTA-Funded
- Expected completion July 2020



WTC Bollard Protection System



WTC Bollard Protection System

Manhattan Community Board 1 Committee Reports

Environmental Protection Sub-Committee – A. Blank

- 1) Superstorm Sandy 6th Anniversary – Resolution
- 2) Proposed City Council legislation regarding the reduction of greenhouse gases (Int. No. 1251, 1252, 1253) – Resolution
- 3) Port Authority of New York and New Jersey Resiliency Initiatives – Report
- 4) South Battery Park City Resiliency Project – Report

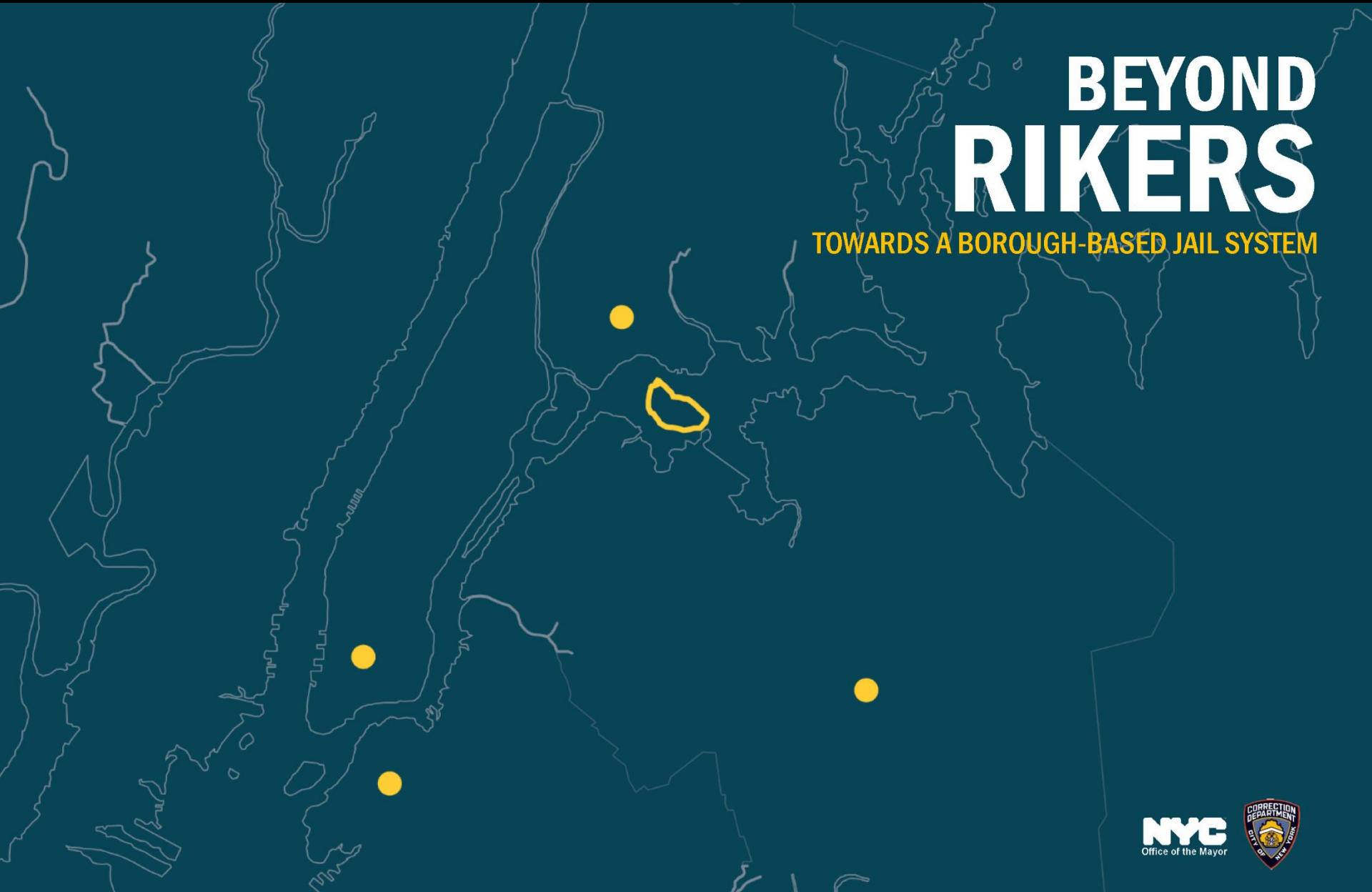
Manhattan Community Board 1 Committee Reports

Land Use Zoning & Economic Development – P. Kennell

1) Manhattan Detention Complex - Report

BEYOND RIKERS

TOWARDS A BOROUGH-BASED JAIL SYSTEM

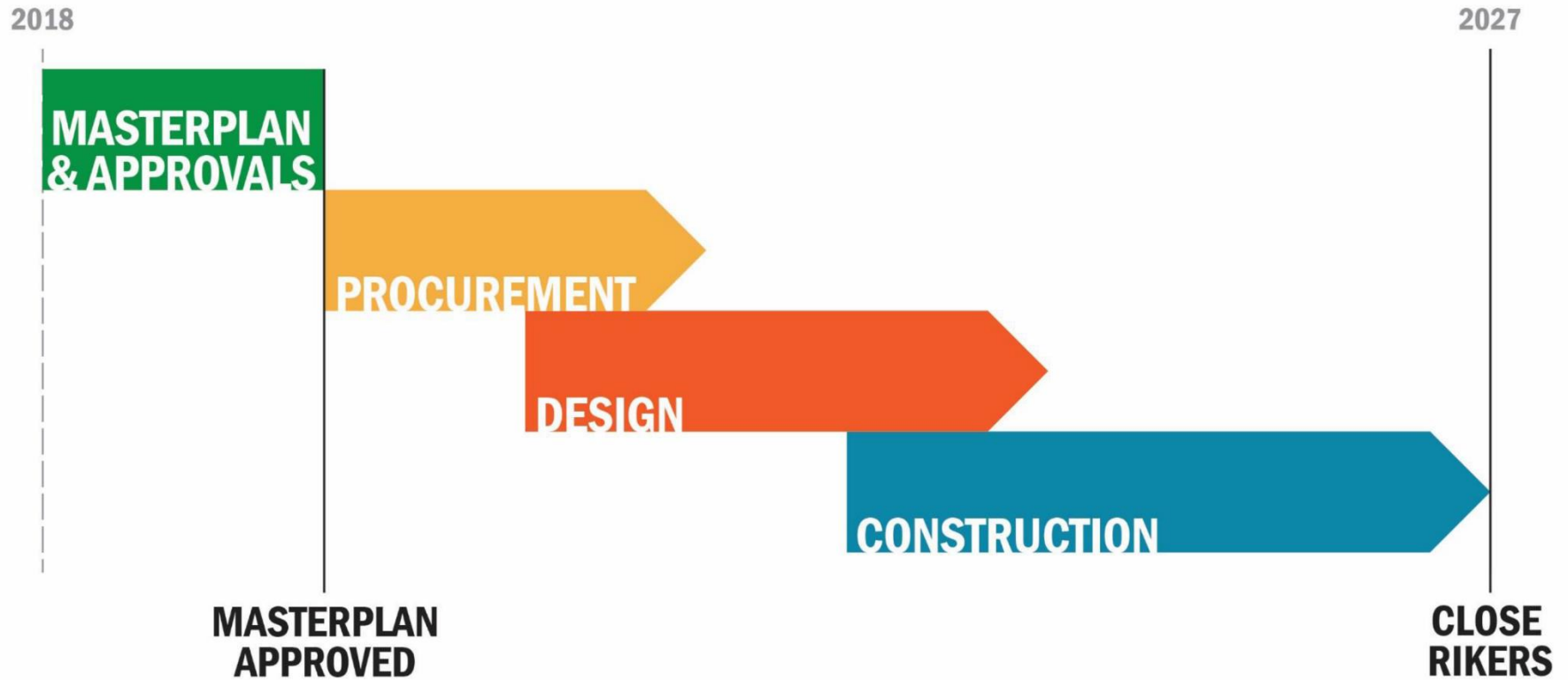


NYC
Office of the Mayor



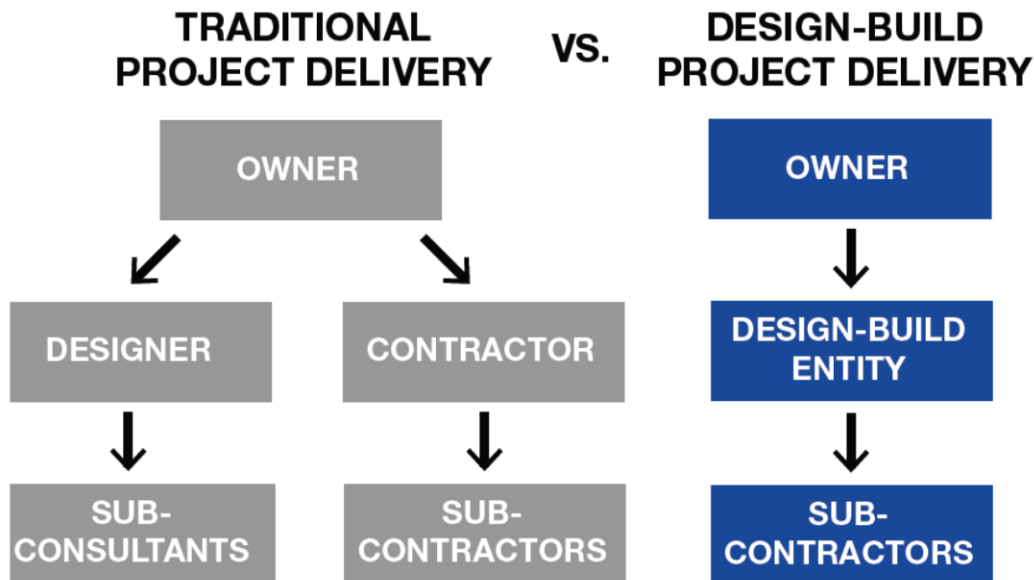
PROCESS: SCHEDULE TO CLOSING JAILS

TIMELINE FOR THE BOROUGH-BASED JAIL SYSTEM



DESIGN-BUILD

NEW YORK CITY WAS AUTHORIZED TO USE DESIGN-BUILD FOR THE BOROUGH-BASED JAILS



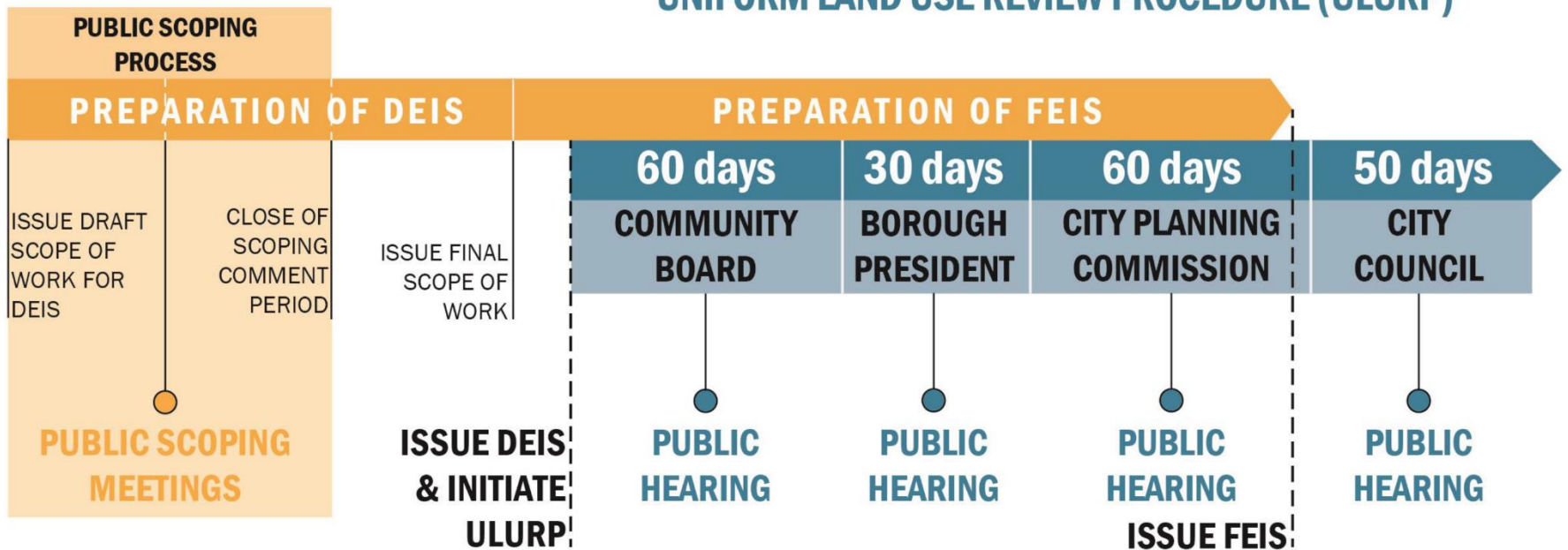
- One entity works under a single contract to provide design and construction services
- Innovative design and problem solving
- Collaborative project management means faster delivery with fewer problems (~15-20% time savings)
- Cost savings are achieved by innovations that come from collaborative work between the design and construction team (~6% cost savings)

ULURP/CEQR PROCESS

MASTER PLAN NEXT STEPS

CITY ENVIRONMENTAL QUALITY REVIEW (CEQR)

UNIFORM LAND USE REVIEW PROCEDURE (ULURP)

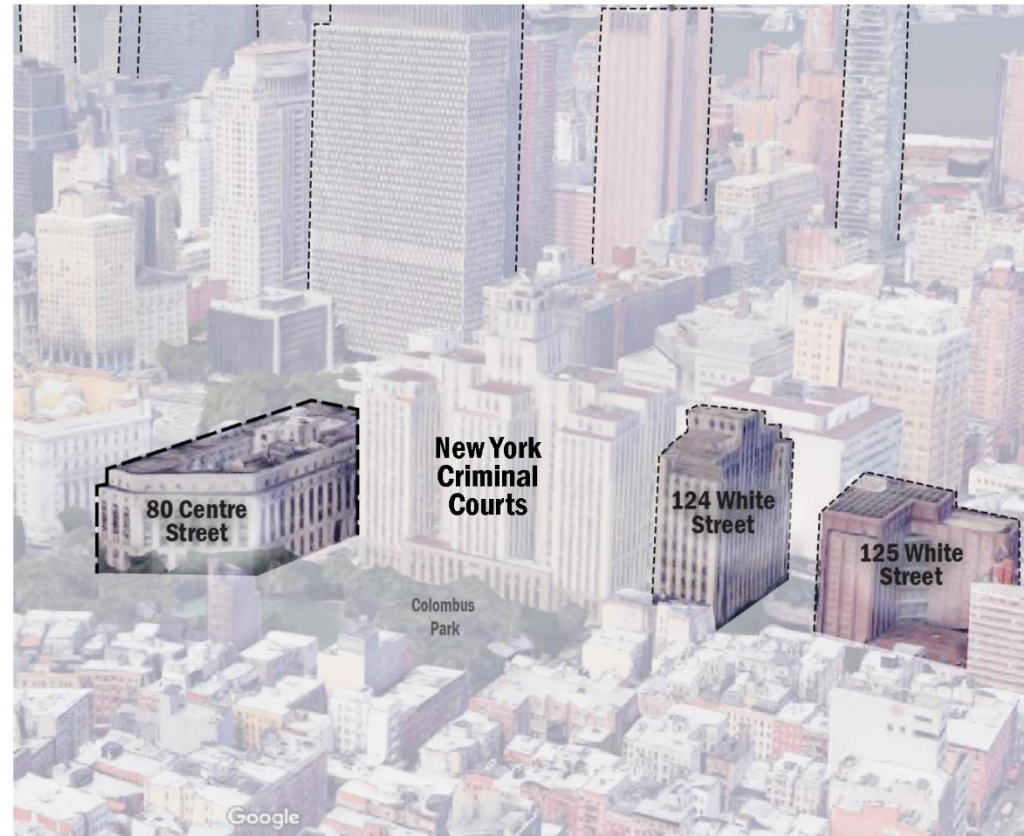


○ Public Meeting/Engagement Opportunity

PROCESS: SITE SELECTION

SITE SELECTION CRITERIA

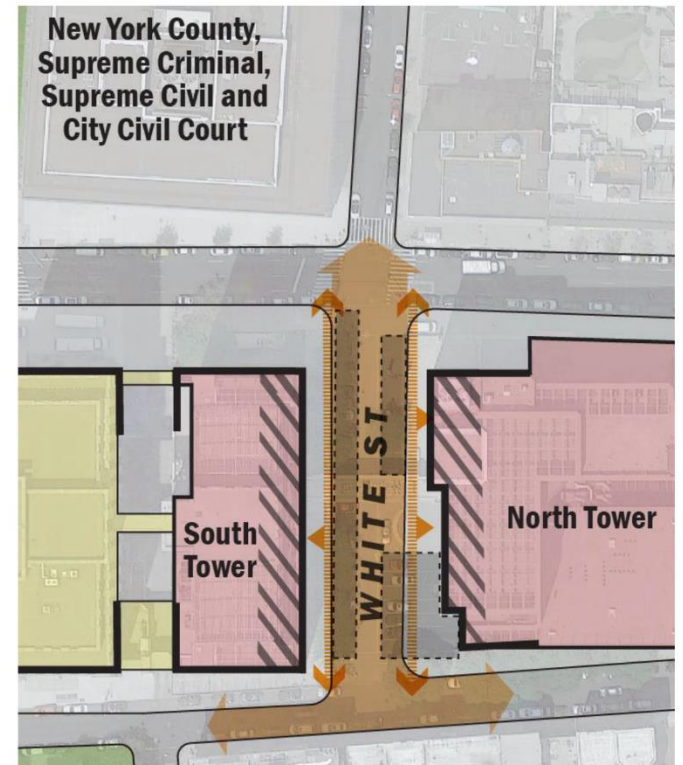
- Close to Courthouse
- City-owned property
- Transit-Accessible
- Sufficient site area



THE PROPOSAL - 125/124 WHITE STREET LOCATION



EXISTING CONDITIONS



Manhattan Community Board 1 Committee Reports

Youth & Education – P. Hovitz

- 1) Specialized High School proposal and recap of Community Education Council District 2 meeting – Resolution
- 2) Stuyvesant High School additional resources to be allocated for mental health at Stuyvesant – Resolution
- 3) MBPO Education Policy Analyst Patrick Joseph on Specialized HS Proposal– Report
- 4) Follow up on DOT Millennium High School Traffic Study – Report

Manhattan Community Board 1

Old Business

Manhattan Community Board 1

New Business

- 1) 375 Pearl Street, Board of Standards and Appeals application 771-76-BZ for an amendment to a previously approved signage variance – Resolution
- 2) 106 Franklin Street, proposal to remove fire escape ladders – Resolution
- 3) 87 Lafayette Street, proposal to renovate rear portion of building and create a documentary screening room in existing DCTV facility - Resolution

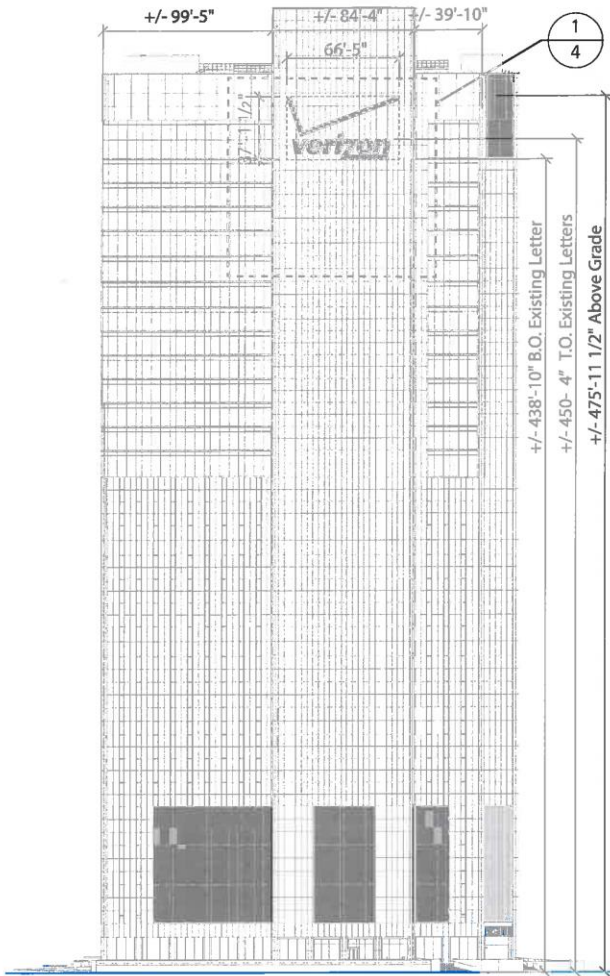
Intergate.Manhattan – 375 Pearl Street

Before:

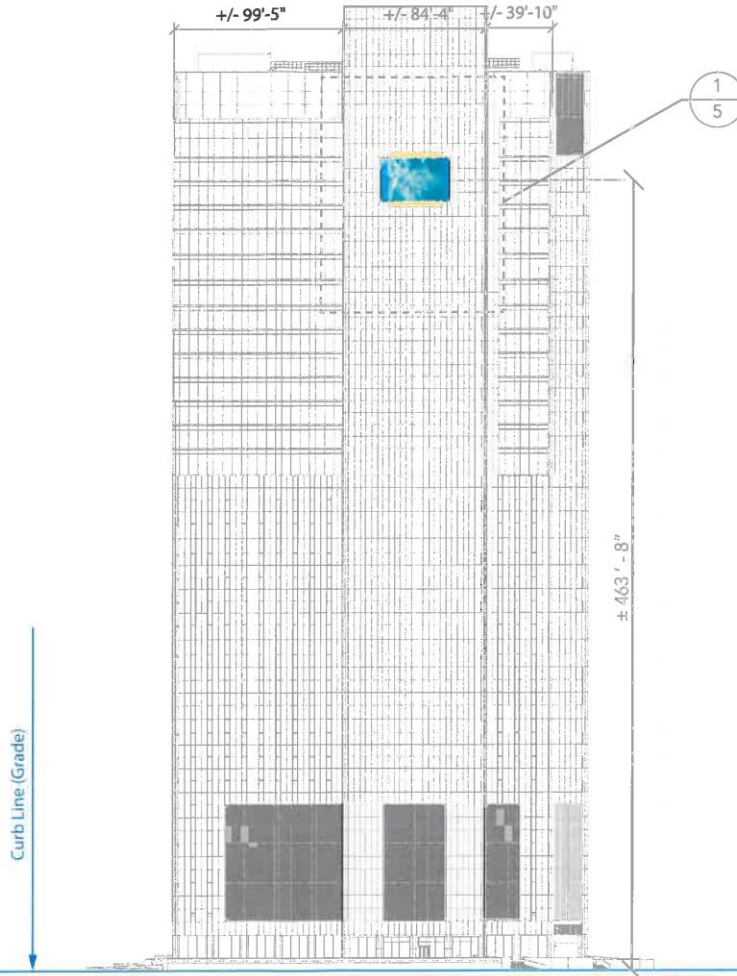


Now:






1 ELEVATION - EXISTING SIGN
NTS



2 ELEVATION - PROPOSED SIGN
NTS

Key Legend:

 Option 1:
40'-0" x 25'-5"
(1016.7 SF) LED
sign

 Option 2:
31'-10" x 31'-10"
(1013.4 SF) LED
sign

Note:
The maximum
allowed sign area is
1,018 sf.



Signage Concept
BSA Preliminary
Submission Package
July 23, 2018
375 Pearl Street



1 RENDERING (SABEY - BLUE) OPTION 1



2 RENDERING (SABEY - BLUE) OPTION 2

Notes

- 1. Digital sign sizes:
Option 1:
40'-0" w x 25'-5" h
(1,016.7 sf)
Option 2:
31'-10" w x 31'-10" h
(1,013.4 sf)

2. The maximum allowed sign area is 1,018 sf

Signage Concept
Renderings

December 7, 2018
375 Pearl Street

Page 6

Renderings





1 RENDERING (VERIZON) OPTION 1



2 EXISTING VERIZON SIGN

Notes

1. Digital sign sizes:
Option 1:
40'-0" w x 25'-5" h
(1,016.7 sf)
Option 2:
31'-10" w x 31'-10" h
(1,013.4 sf)

2. The maximum allowed sign area is 1,018 sf

Signage Concept
Renderings

December 7, 2018
376 Pearl Street

Page 4

Renderings



106 Franklin Street – Existing Conditions



106 FRANKLIN STREET
1940



106 FRANKLIN STREET
2018

106 FRANKLIN ST
NEW YORK, NY, 10013

KUTNY & BERNSTEIN ARCHITECT'S
575 10th Avenue, 10th Fl., New York, NY 10018
Tel: 212 691 1111 Fax: 212 691 1112
www.kutnyandbernstein.com

DATE: 08/14/18
PROJECT: 106 FRANKLIN ST
DRAWN BY: [Redacted]
CHECKED BY: [Redacted]
SCALE: 1/8" = 1'-0"

k b
a

Sheet - 1 of 1	
NO.	DESCRIPTION
1	106 FRANKLIN ST
2	106 FRANKLIN ST
3	106 FRANKLIN ST
4	106 FRANKLIN ST
5	106 FRANKLIN ST
6	106 FRANKLIN ST
7	106 FRANKLIN ST
8	106 FRANKLIN ST
9	106 FRANKLIN ST
10	106 FRANKLIN ST
11	106 FRANKLIN ST
12	106 FRANKLIN ST
13	106 FRANKLIN ST
14	106 FRANKLIN ST
15	106 FRANKLIN ST
16	106 FRANKLIN ST
17	106 FRANKLIN ST
18	106 FRANKLIN ST
19	106 FRANKLIN ST
20	106 FRANKLIN ST
21	106 FRANKLIN ST
22	106 FRANKLIN ST
23	106 FRANKLIN ST
24	106 FRANKLIN ST
25	106 FRANKLIN ST
26	106 FRANKLIN ST
27	106 FRANKLIN ST
28	106 FRANKLIN ST
29	106 FRANKLIN ST
30	106 FRANKLIN ST
31	106 FRANKLIN ST
32	106 FRANKLIN ST
33	106 FRANKLIN ST
34	106 FRANKLIN ST
35	106 FRANKLIN ST
36	106 FRANKLIN ST
37	106 FRANKLIN ST
38	106 FRANKLIN ST
39	106 FRANKLIN ST
40	106 FRANKLIN ST
41	106 FRANKLIN ST
42	106 FRANKLIN ST
43	106 FRANKLIN ST
44	106 FRANKLIN ST
45	106 FRANKLIN ST
46	106 FRANKLIN ST
47	106 FRANKLIN ST
48	106 FRANKLIN ST
49	106 FRANKLIN ST
50	106 FRANKLIN ST
51	106 FRANKLIN ST
52	106 FRANKLIN ST
53	106 FRANKLIN ST
54	106 FRANKLIN ST
55	106 FRANKLIN ST
56	106 FRANKLIN ST
57	106 FRANKLIN ST
58	106 FRANKLIN ST
59	106 FRANKLIN ST
60	106 FRANKLIN ST
61	106 FRANKLIN ST
62	106 FRANKLIN ST
63	106 FRANKLIN ST
64	106 FRANKLIN ST
65	106 FRANKLIN ST
66	106 FRANKLIN ST
67	106 FRANKLIN ST
68	106 FRANKLIN ST
69	106 FRANKLIN ST
70	106 FRANKLIN ST
71	106 FRANKLIN ST
72	106 FRANKLIN ST
73	106 FRANKLIN ST
74	106 FRANKLIN ST
75	106 FRANKLIN ST
76	106 FRANKLIN ST
77	106 FRANKLIN ST
78	106 FRANKLIN ST
79	106 FRANKLIN ST
80	106 FRANKLIN ST
81	106 FRANKLIN ST
82	106 FRANKLIN ST
83	106 FRANKLIN ST
84	106 FRANKLIN ST
85	106 FRANKLIN ST
86	106 FRANKLIN ST
87	106 FRANKLIN ST
88	106 FRANKLIN ST
89	106 FRANKLIN ST
90	106 FRANKLIN ST
91	106 FRANKLIN ST
92	106 FRANKLIN ST
93	106 FRANKLIN ST
94	106 FRANKLIN ST
95	106 FRANKLIN ST
96	106 FRANKLIN ST
97	106 FRANKLIN ST
98	106 FRANKLIN ST
99	106 FRANKLIN ST
100	106 FRANKLIN ST

Historic Landmark Commission
LPC-106

DATE: 08/14/18
DRAWN BY: [Redacted]
CHECKED BY: [Redacted]
SCALE: 1/8" = 1'-0"

12/18/2018 3:35:50 PM

106 Franklin Street – Existing and Proposed Conditions



EXISTING FIRE ESCAPE



PROPOSED FIRE ESCAPE
(NO LADDERS)

106 FRANKLIN ST
NEW YORK, NY 10013

KUTNICK BERNSTEIN ARCHITECTS
270 BROADWAY, NEW YORK, NY 10013
TEL: 212.279.8888
WWW.KBA.COM

k b a

106 FRANKLIN ST

REVISIONS	
NO.	DESCRIPTION
01	ISSUED FOR PERMITS
02	REVISED PER PERMITS
03	REVISED PER PERMITS
04	REVISED PER PERMITS
05	REVISED PER PERMITS
06	REVISED PER PERMITS
07	REVISED PER PERMITS
08	REVISED PER PERMITS
09	REVISED PER PERMITS
10	REVISED PER PERMITS
11	REVISED PER PERMITS
12	REVISED PER PERMITS
13	REVISED PER PERMITS
14	REVISED PER PERMITS
15	REVISED PER PERMITS
16	REVISED PER PERMITS
17	REVISED PER PERMITS
18	REVISED PER PERMITS
19	REVISED PER PERMITS
20	REVISED PER PERMITS

PERMITS RECEIVED

NO. 106 FRANKLIN ST

BEFORE AND AFTER

106 FRANKLIN ST

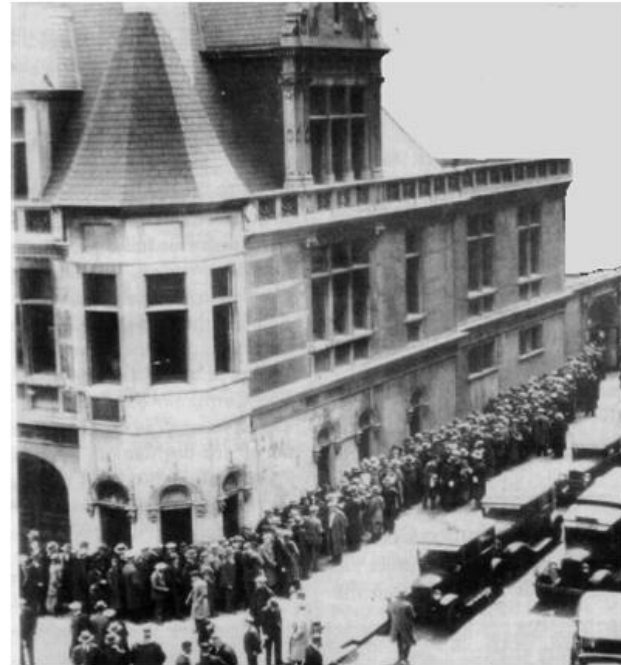
DATE	BY	REVISION

12/13/2014 3:55:13 PM

87 Lafayette Street – Historic Photo



FIRE ENGINE HOUSE (1805)
Lafayette and White Sts. New York
N. Le Brun & Sons. Architects



HISTORIC PHOTO SHOWING OLD ENTRY TO FORMER
STABLE AREA IN USE

HISTORIC PHOTOS

December 13, 2018

7 of 25



LHSA+DP
Lee H. Skrabick Architecture + Design Partnership

87 Lafayette Street – Existing Condition



EXISTING CONDITIONS - 2018

December 13, 2018

8 of 25



87 Lafayette Street – Existing Condition



EXISTING CONDITIONS - 2018

December 13, 2018

9 of 25

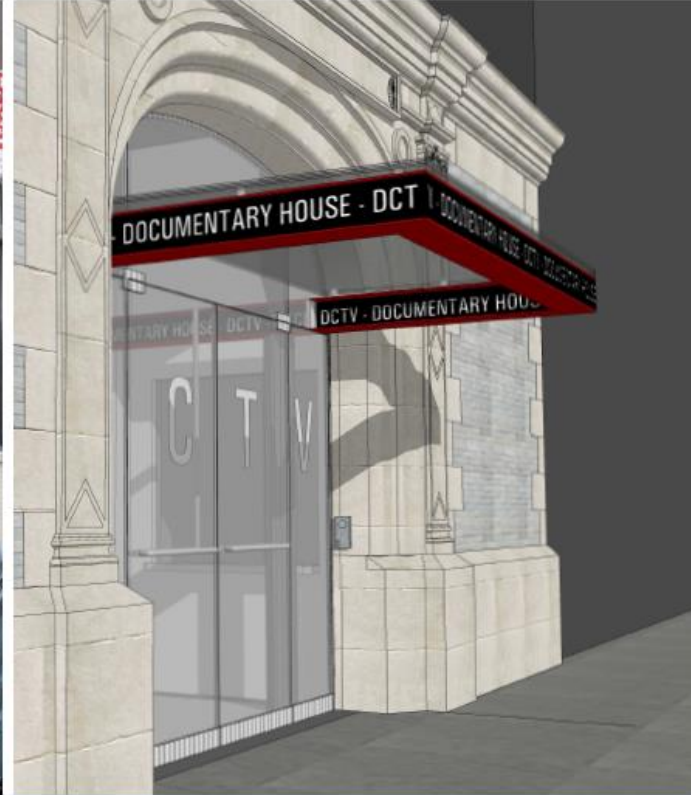


87 Lafayette Street – Existing and Proposed Conditions



EXISTING VIEW

December 13, 2018



PROPOSED RENDERED VIEW WITH
NEW ENTRY & CANOPY

12 of 25



87 Lafayette Street – Existing and Proposed Conditions



EXISTING VIEW

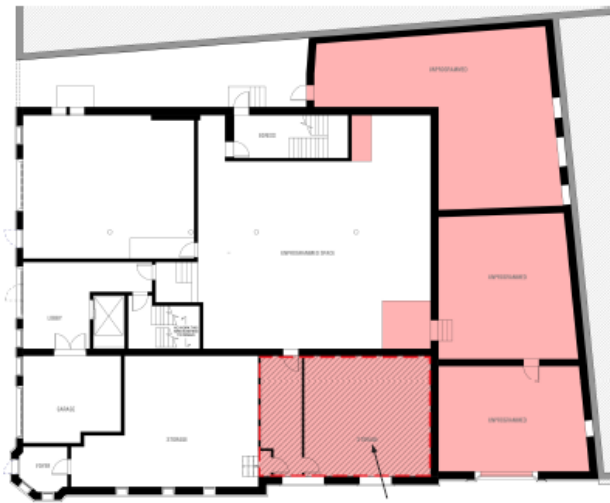
December 13, 2018

PROPOSED RENDERED VIEW WITH
NEW ENTRY & CANOPY

11 of 25



87 Lafayette Street – Existing Conditions



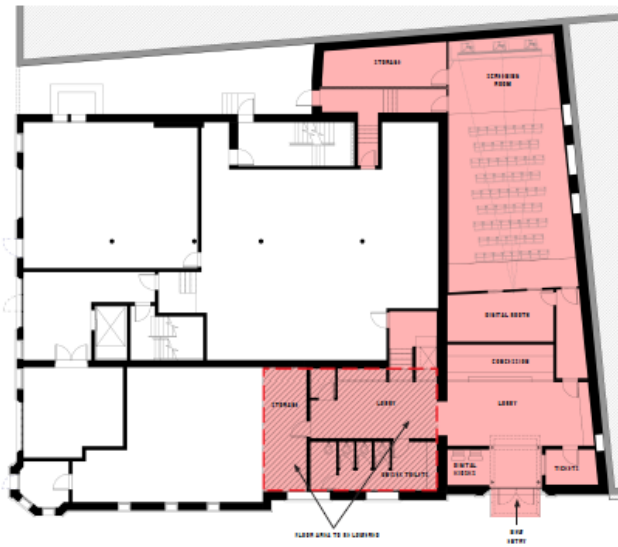
EXISTING GROUND FLOOR PLAN



WHITE STREET EXISTING BUILDING ELEVATION

EXISTING CONDITIONS DRAWINGS

87 Lafayette Street – Proposed Conditions



PROPOSED GROUND FLOOR PLAN



WHITE STREET PROPOSED BUILDING ELEVATION

PROPOSED DRAWINGS

December 13, 2018

15 of 25



LHSA+DP
Lee H. Skelrick Architecture + Design Partnership

Thank you and goodnight