

June 9, 2026  
Public Hearing

The current proposal is:

Preservation Department – Item 6, LPC-26-10584

**402 West 21st Street – Chelsea Historic District**  
**Borough of Manhattan**

To testify virtually, please join Zoom

**Webinar ID:** 165 868 4773

**Passcode:** 126605

By Phone: 646-828-7666 (NY)

833-435-1820 (Toll-free)

833-568-8864 (Toll-free)

**Note:** If you want to testify virtually on an item, join the Zoom webinar at the agenda's "Be Here by" time (about an hour in advance). When the Chair indicates it's time to testify, "raise your hand" via the Zoom app if you want to speak (\*9 on the phone). Those who signed up in advance will be called first.

APPLICATION TO THE  
LANDMARKS PRESERVATION COMMISSION

# VANDERBILT UNIVERSITY *at the* GENERAL THEOLOGICAL SEMINARY

SHERRED HALL, 408 WEST 21ST STREET

09 JUNE 2026

BEYER  
BLINDER  
BELLE



VANDERBILT  
UNIVERSITY

# AGENDA

I. Site Context

II. Work Pursuing Commission Level Approval  
- Window Replacement



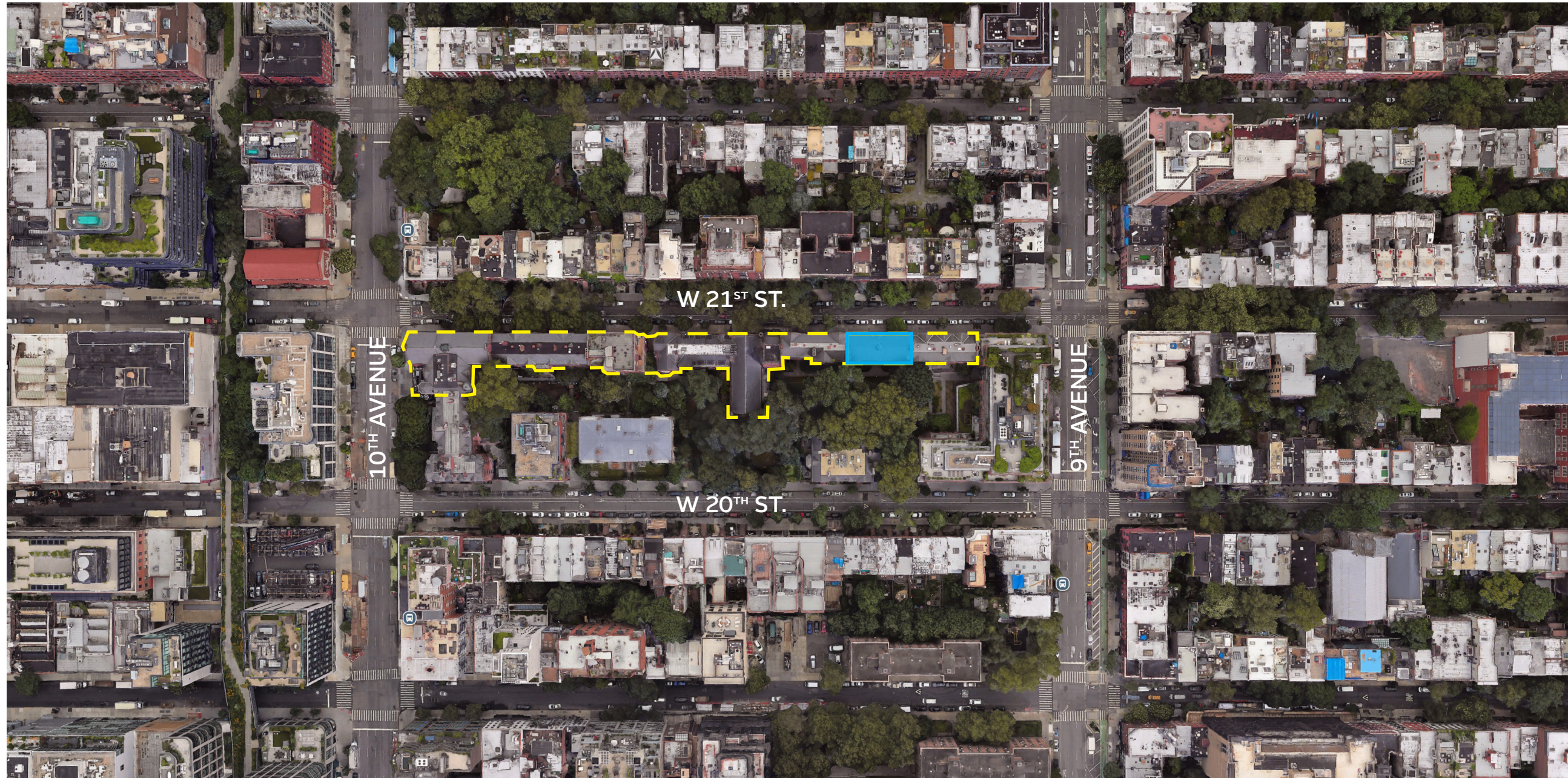


# SITE CONTEXT



---

# LOCATION

## SITE CONTEXT



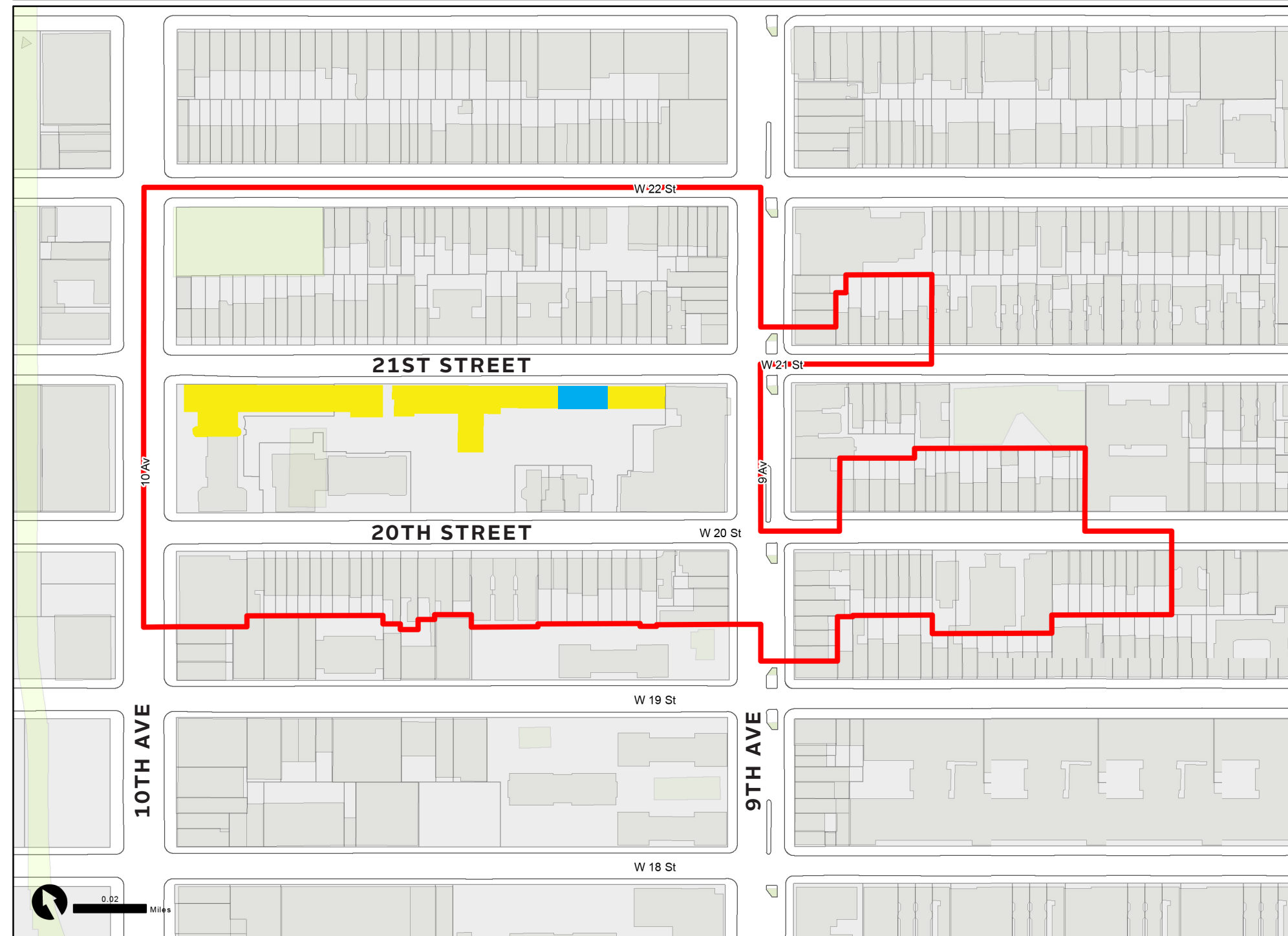
### LEGEND

-  General Theological Seminary Buildings
-  Sherred Hall, 408 W 21st Street

# HISTORIC DISTRICT

SITE CONTEXT

Chelsea Historic District | LP-0666



Graphic Source: Map PLUTO, Edition 18v1, Author: New York City Landmarks Preservation Commission, LCR Date: 1.2.2019

### Legend

- Historic District Boundary
- Building Footprints
- New York City Tax Lots
- GTS/VU Campus
- Sherrred Hall

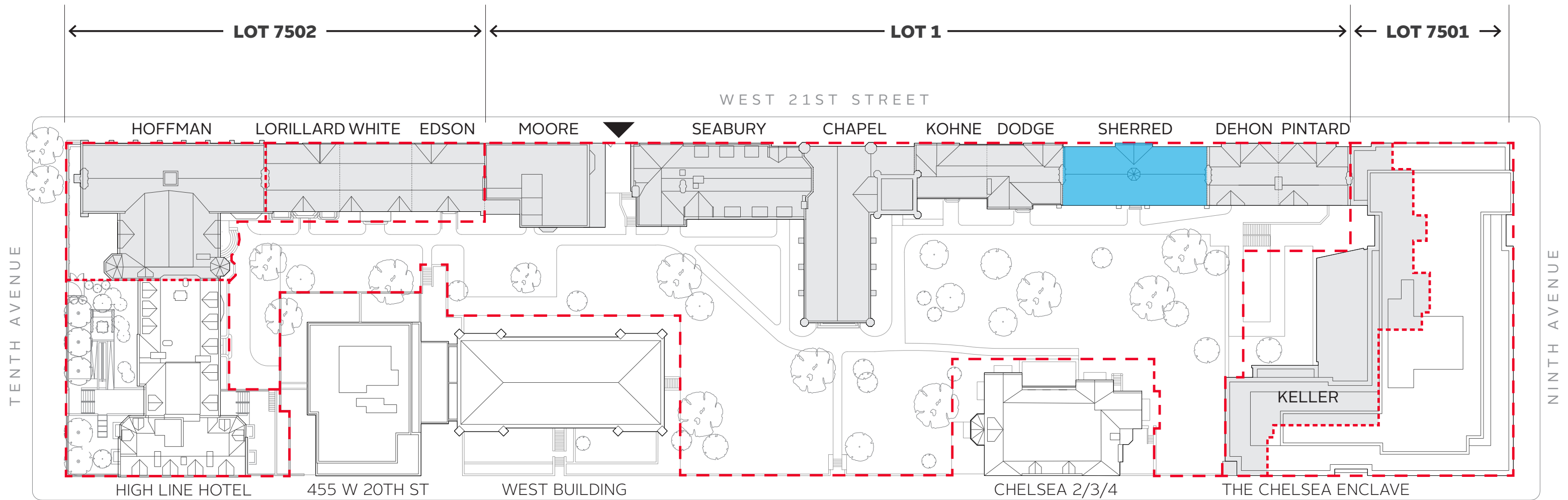
# LOCATION

SITE CONTEXT



# SITE PLAN

## SITE CONTEXT



NAME	Hoffman	Lorillard	White	Edson	Moore	Seabury	Chapel	Kohne	Dodge	Sherred	Dehon	Pintard	Keller Library
DOB BIN	BIN 1088996				BIN 1083575	BIN 1083573						BIN 1088184	
ADDRESS	180 10th Ave	450 W.	448 W.	446 W.	444 W. 21 <sup>st</sup>	418 W. 21 <sup>st</sup> St.	416 W. 21 <sup>st</sup> St.	412 W.	410 W.	408 W. 21 <sup>st</sup> St.	404 W.	402 W.	177 9th Ave
CONS. DATE	1899-1900	1902-1903			1955-56	1931-32	1886-1888	1891		1883-84	1885		2011
ARCHITECT	Charles Coolidge Haight	Haight			Robert O'Connor & Walter Kelham Jr.	Alfred Morton Githens	Haight	Haight		Haight	Haight		
LAST RECENT RENO	2008	Prior to 2005			unknown	2011	2006	2007		Prior to 2005	Unknown		N/a
SCOPE OF LAST RENO	Partial facade restoration, new windows, adaptive reuse to Conf. Center	Partial masonry restoration, roof replacement			Partial window replacement	Reconfiguration of offices and bathrooms	Tower temp. Stabilization	Facade restoration, new windows		Partial masonry restoration, roof replacement			New Building in 2011

■ BUILDINGS/CONDOS IN VU LEASE

# HISTORIC DESIGNATION DETAILS

## SITE CONTEXT

Landmark Type: Historic District

Designation Date: September 15, 1970

Borough: Manhattan

Construction Date: 1883 (Sherrred Hall)

Architect : Charles Coolidge Haight

Building Style : English Collegiate Gothic

Owner / Developer : The General Theological Seminary

Material Primary: Brick

Material Secondary: Brownstone

Material Tertiary: Pressed Brick

Material Quaternary: Slate Shingles

Use Original: Religious, Seminary, Protestant Episcopal

Building Type: Classroom (Higher Education)



HISTORIC PHOTOGRAPH CIRCA 1884, SHERRRED PICTURED AT FAR LEFT

# DESIGNATION REPORT

## SITE CONTEXT

The Chelsea Historic District Designation Report includes a six-page description of the GTS campus, along with a concluding statement on management of architectural change at the campus. Here are several excerpts and the statement:

“No. 175 The Episcopal General Theological Seminary occupies a central location in the Chelsea Historic District and an important place in its daily life. Set in its own ample, grounds, Chelsea Square, the buildings effectively enframe a campus, which with its old trees and lawns, provides a cool setting of greenery during the summer months. What we see today (1970), with the exception of the “West Building”, has only been in existence since the 1880s – the result of the labors of the dedicated dean, who, with its architect, conceived a master plan and brought it into being.

“The cornerstone for the first building, the “East Building”, was laid July 28, 1825 and it was built in the Gothic style. The seminary outgrew that building and the West Building was completed in 1836. The East Building was then razed for three professors houses along 20th Street.

“Charles Coolidge Haight, the architect of a renovation of the West Building in 1867, was called upon to create a master plan for the site in 1883. Much of the campus was completed by 1902.

“The difficult problem to solve was that the main entrance had to be on Ninth Avenue, on one of the short dimensions, instead of being in the center of the long side. Haight solved this by erecting an impressive central building, the Administrative Building [Jarvis Hall] with its tunnel-like entrance, flanked on either side by the handsome Library and Deanery. These buildings once gave a very good indication of what the visitor might expect inside the Quadrangle. Unfortunately, they have been swept away to make room for new buildings [Sherrill Hall, 1959-1961].

“The general feeling which pervades this group of buildings is one of low-lying uniformity, achieved through a homogeneous use of materials punctuated by an occasional tower, buttress, gabled entrance or chimney. The end result is reposeful and remarkably successful as an architectural ensemble. The materials employed were hard brick, chosen for its color, for the walls; Belleville brownstone and pressed brick trim at the openings and dark colored slate for the roofs.” [End excerpts.]

The statement specific to the GTS campus:

“The Landmarks Preservation Commission recognizes that the needs of the General Theological Seminary in the Chelsea Historic District may change in the years ahead. The Commission wishes to state at this time this it recognizes that the General Theological Seminary may wish to make exterior alterations to its existing buildings. The Commission looks forward to working with the representatives of the Seminary when it desires to erect new buildings on its grounds or to make exterior alterations on its existing buildings.”



UNDATED HISTORIC PHOTOGRAPH - SHERRILL PICTURED AT CENTER

# HISTORIC PHOTOS - INSIDE THE CLOSE

## SITE CONTEXT



21ST ST - POST 1960 - SHERRED AT CENTER



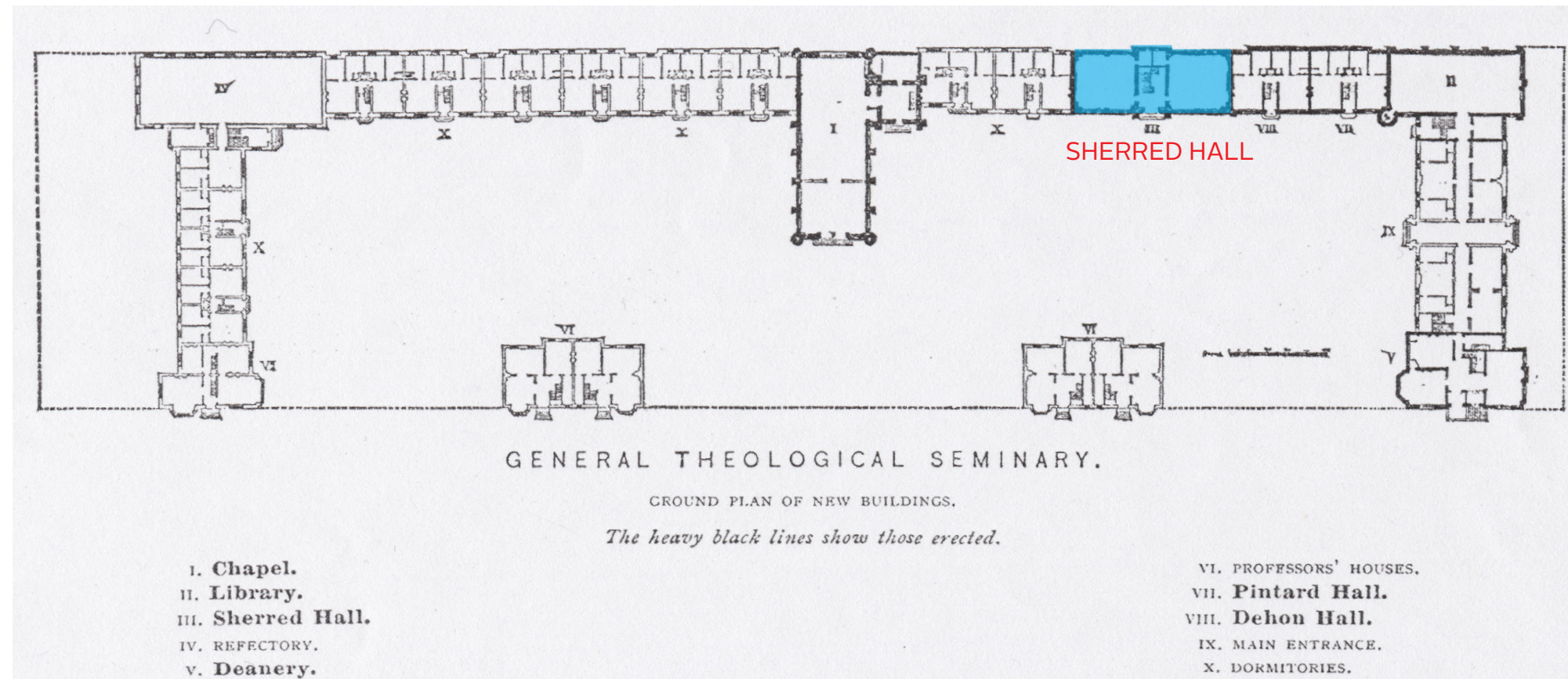
21ST ST - 1927 - SHERRED 2ND FROM RIGHT



EAST CLOSE - UNDATED - SHERRED AT RIGHT



EAST CLOSE - 1950 - SHERRED AT CENTER



HAIGHT MASTERPLAN



# WINDOW REPLACEMENT

---



SHERRED SOUTH FACADE FROM THE SEMINARY CLOSE



SHERRED NORTH FACADE FROM 21ST STREET

# WINDOWS - EXISTING CONDITIONS

## WINDOW REPLACEMENT



WINDOW TYPE 0



WINDOW TYPE 1



WINDOW TYPE 2



WINDOW TYPE 3



WINDOW TYPE 1



WINDOW TYPE 2F (FIRE ESCAPE)



WINDOW TYPE 3F (FIRE ESCAPE)

## SHERRED WINDOWS - EXISTING CONDITIONS

# WINDOWS - EXISTING CONDITIONS

## WINDOW REPLACEMENT



# WINDOWS - EXISTING

WINDOW REPLACEMENT



# WINDOWS - PROPOSED

WINDOW REPLACEMENT



# WINDOWS - EXISTING

## WINDOW REPLACEMENT



# WINDOWS - PROPOSED

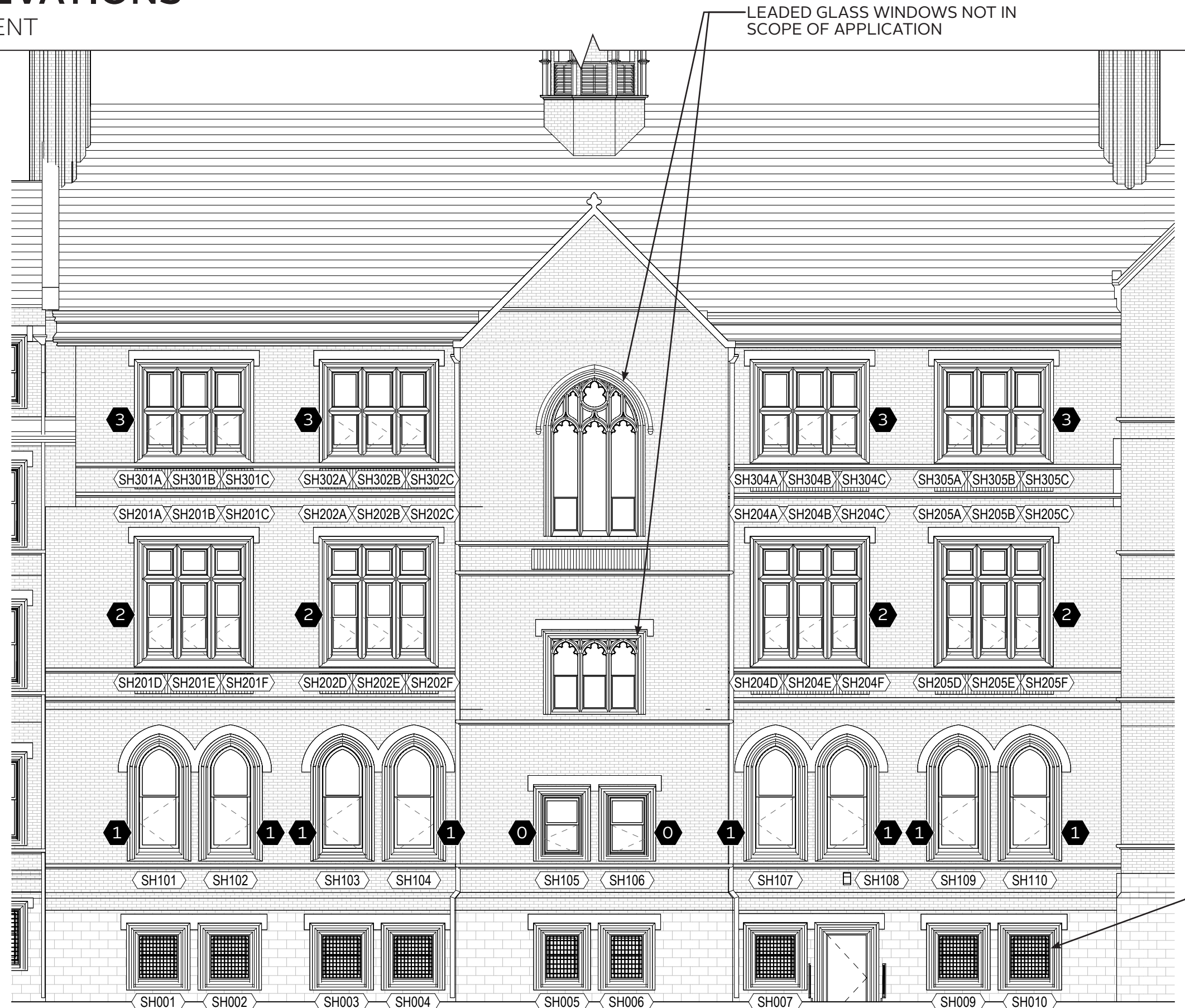
WINDOW REPLACEMENT



# SHERRED ELEVATIONS

## WINDOW REPLACEMENT

TAG LEGEND	
0	FIRST FLOOR PRIVACY WINDOW
1	FIRST FLOOR ARCHED WINDOW
2	SECOND FLOOR WINDOW WITH TRANSOM
2F	SECOND FLOOR EGRESS WINDOW W/ TRANSOM
3	THIRD FLOOR WINDOW
3F	THIRD FLOOR EGRESS WINDOW



1' 3' 5'

NORTH ELEVATION  
(21ST STREET)

# SHERRED ELEVATIONS

## WINDOW REPLACEMENT

### TAG LEGEND

- 0** FIRST FLOOR PRIVACY WINDOW
- 1** FIRST FLOOR ARCHED WINDOW
- 2** SECOND FLOOR WINDOW WITH TRANSOM
- 2F** SECOND FLOOR EGRESS WINDOW W/ TRANSOM
- 3** THIRD FLOOR WINDOW
- 3F** THIRD FLOOR EGRESS WINDOW



1' 3' 5'

SOUTH ELEVATION  
(CAMPUS CLOSE)

# WINDOW TESTING

## WINDOW REPLACEMENT

REPLACEMENT ALUMINUM DOUBLE HUNG WINDOW

### TEST REPORT

Report No.: B9116.01-109-44

**Rendered to:**

SKYLINE WINDOWS  
Bronx, New York

**PRODUCT TYPE:** Aluminum Double Hung Window

**SERIES/MODEL:** DH100 i

**SPECIFICATION:** AAMA/WDMA/CSA 101/I.S.2/A440-11, *NAFS - North American Fenestration Standard/Specification for Windows, Doors, and Skylights*

Title	Summary of Results
Primary Product Designator	Class AW-PG50 1524 x 2540 (60 x 100)-H
Design Pressure	±2400 Pa (±50.13 psf)
Air Infiltration	1.5 L/s/m <sup>2</sup> (0.29 cfm/ft <sup>2</sup> )
Water Penetration Resistance Test Pressure	580 Pa (12.11 psf)

PROPOSED ALUMINUM FIXED OVER CASEMENT

### TEST REPORT

AAMA/WDMA/CSA 101/I.S.2/A440-17

REPORT NO.: 27592.01-106-11

RENDERED TO: SKYLINE WINDOWS  
Wood-Ridge, New Jersey

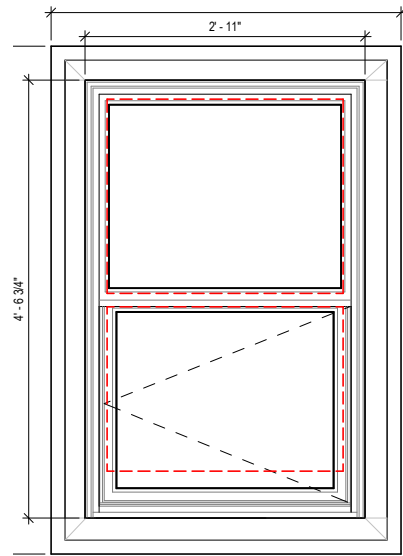
PRODUCT TYPE: Fixed over Casement

SERIES / MODEL: 500 Offset Window

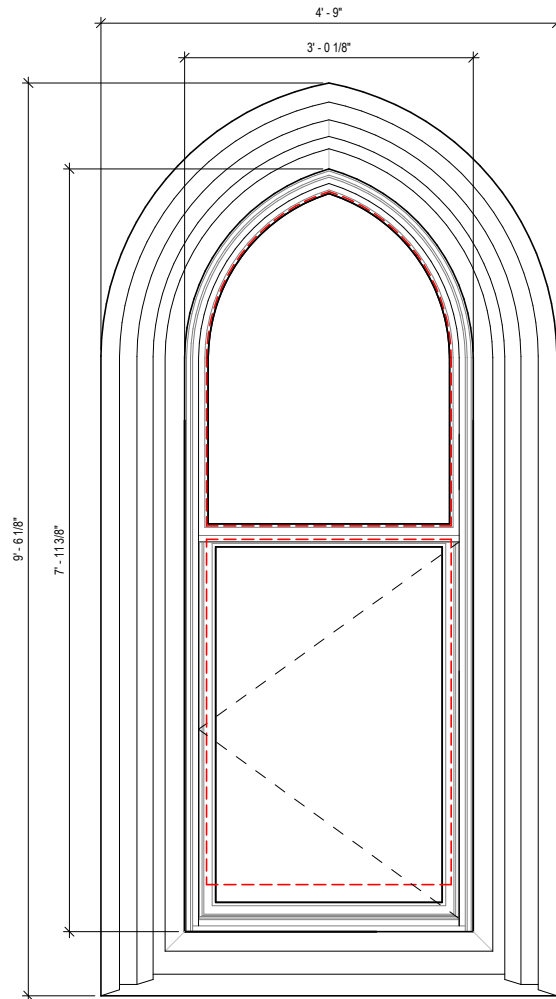
Test	Summary of Results
Primary Product Designator	Class AW – PG100 892 x 3004 (35 x 118)-C
Design Pressure	±4800 Pa (±100.25 psf)
Air Infiltration @ 6.24 psf	0.1 L/s/m <sup>2</sup> (0.01 cfm/ft <sup>2</sup> )
Air Exfiltration @ 1.57 psf	<0.1 L/s/m <sup>2</sup> (<0.01 cfm/ft <sup>2</sup> )
Water Penetration Resistance Test Pressure	720 Pa (15.04 psf)

# SHERRED WINDOW TYPES

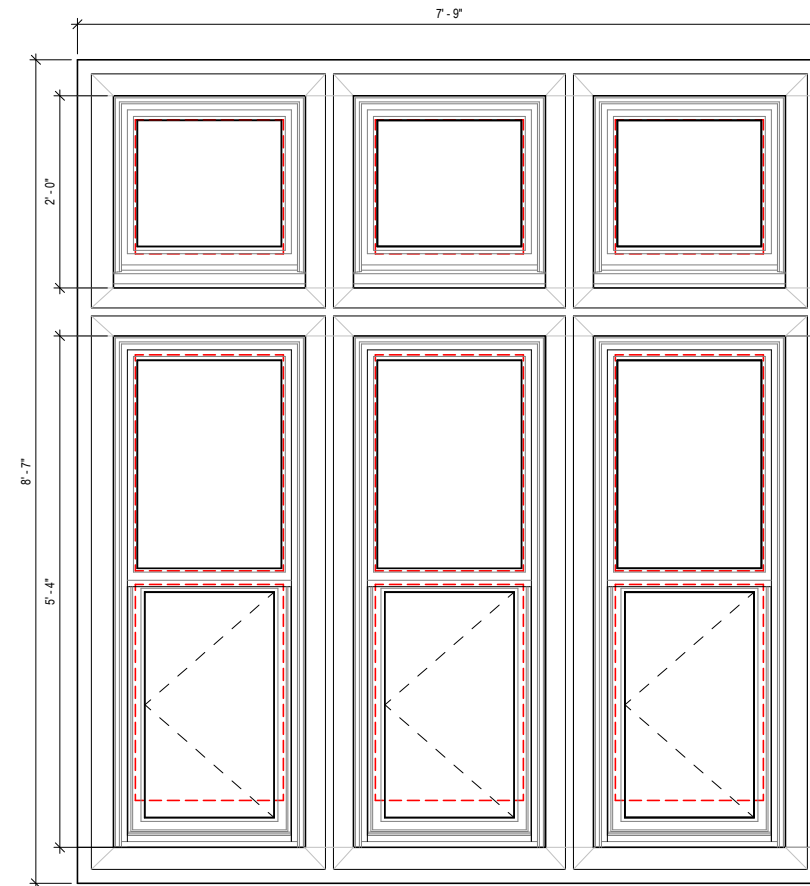
## WINDOW REPLACEMENT



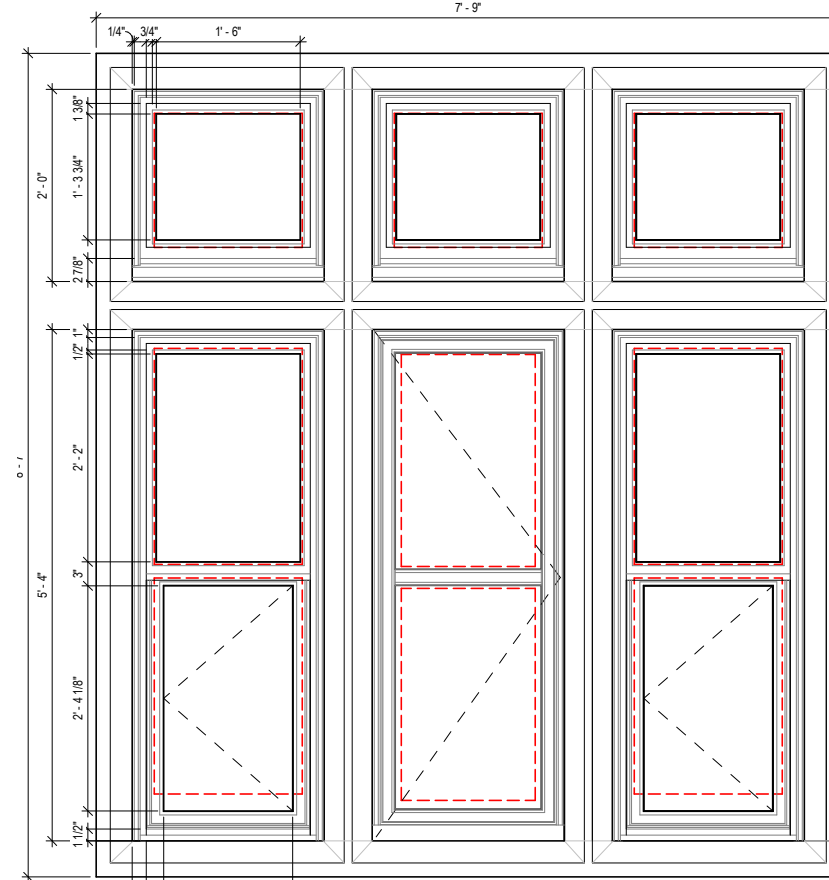
TYPE 0 - Street Facade



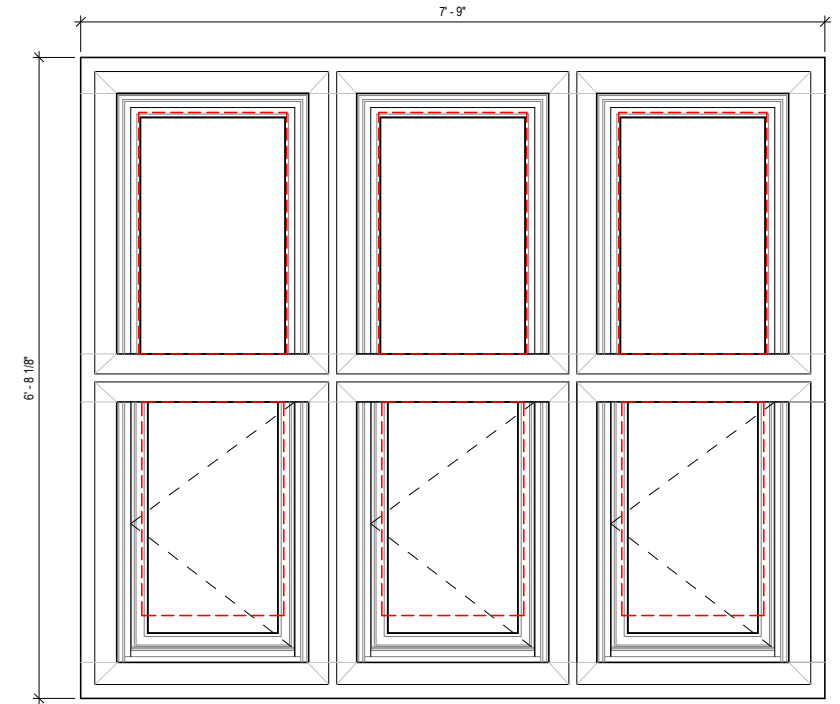
TYPE 1 - Street & Close Facade



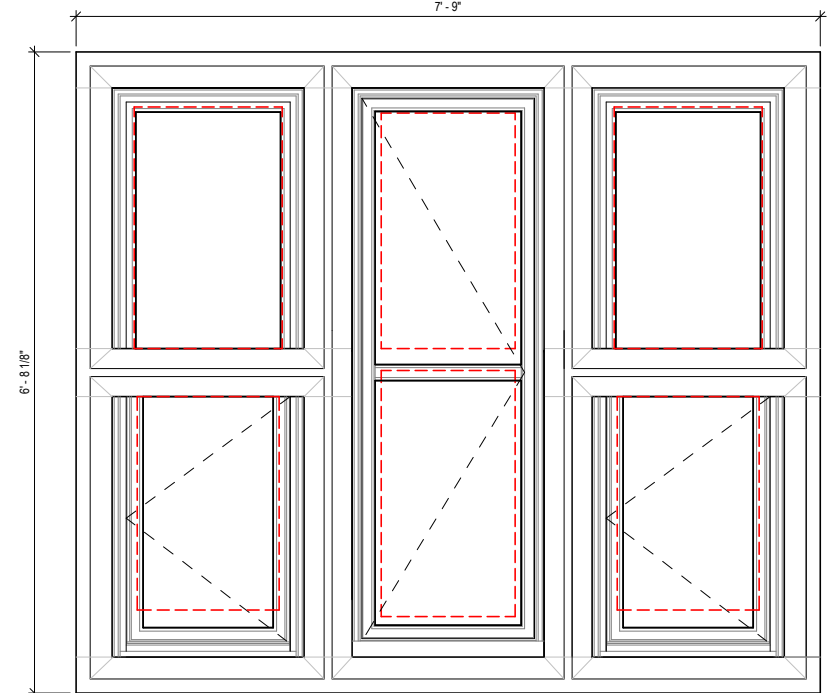
TYPE 2 - Street Facade



TYPE 2F - Close Facade



TYPE 3 - Street Facade

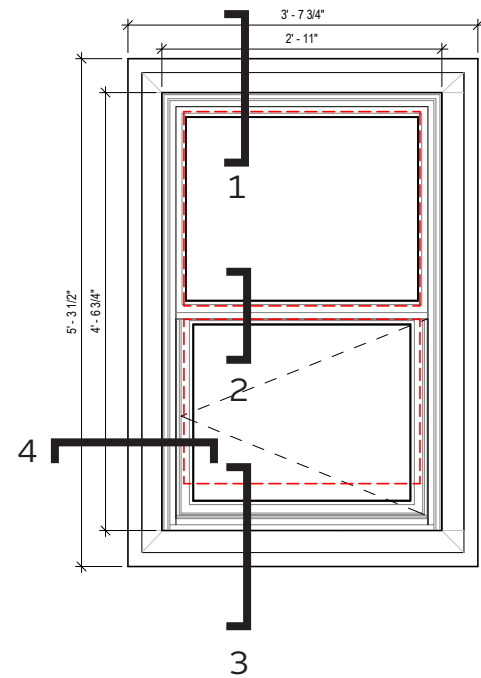


TYPE 3F - Close Facade

# SHERRED - TYPE 0

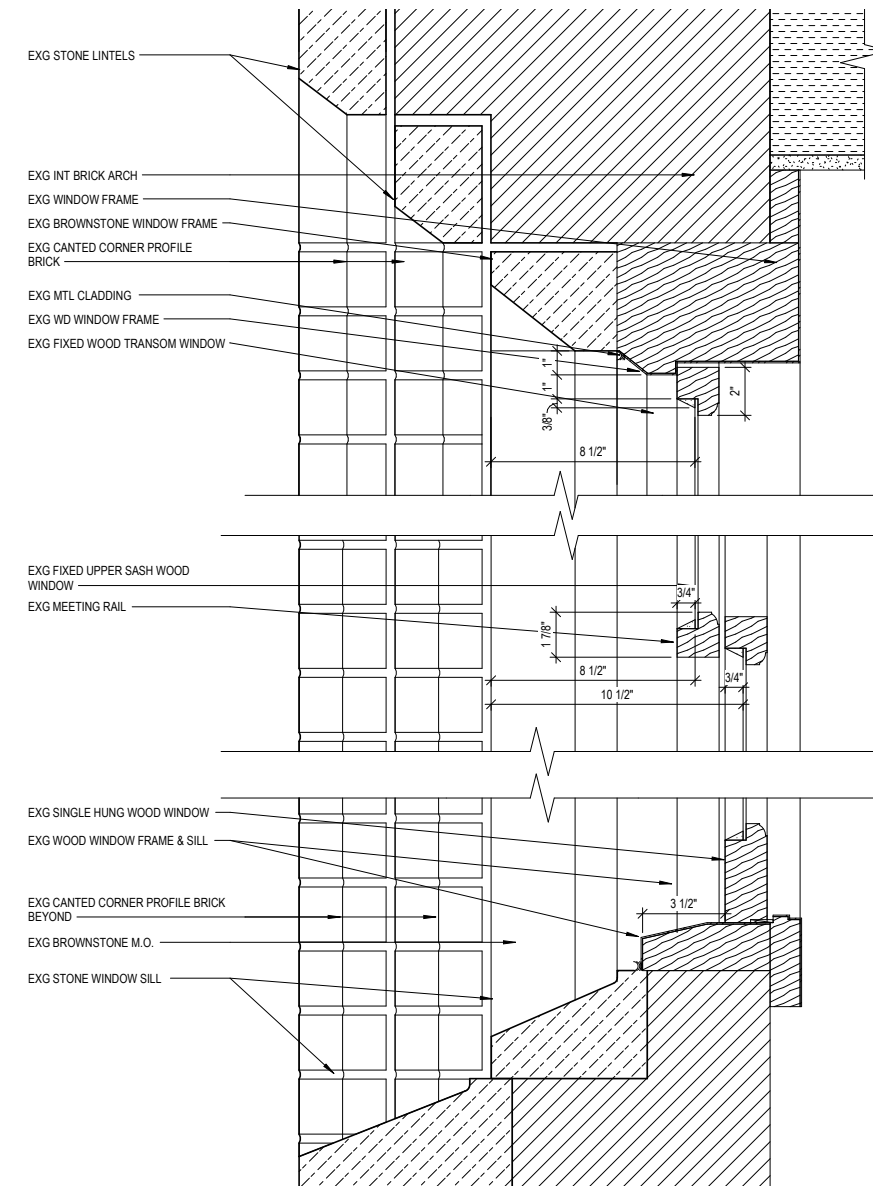
## WINDOW REPLACEMENT

Street Facade

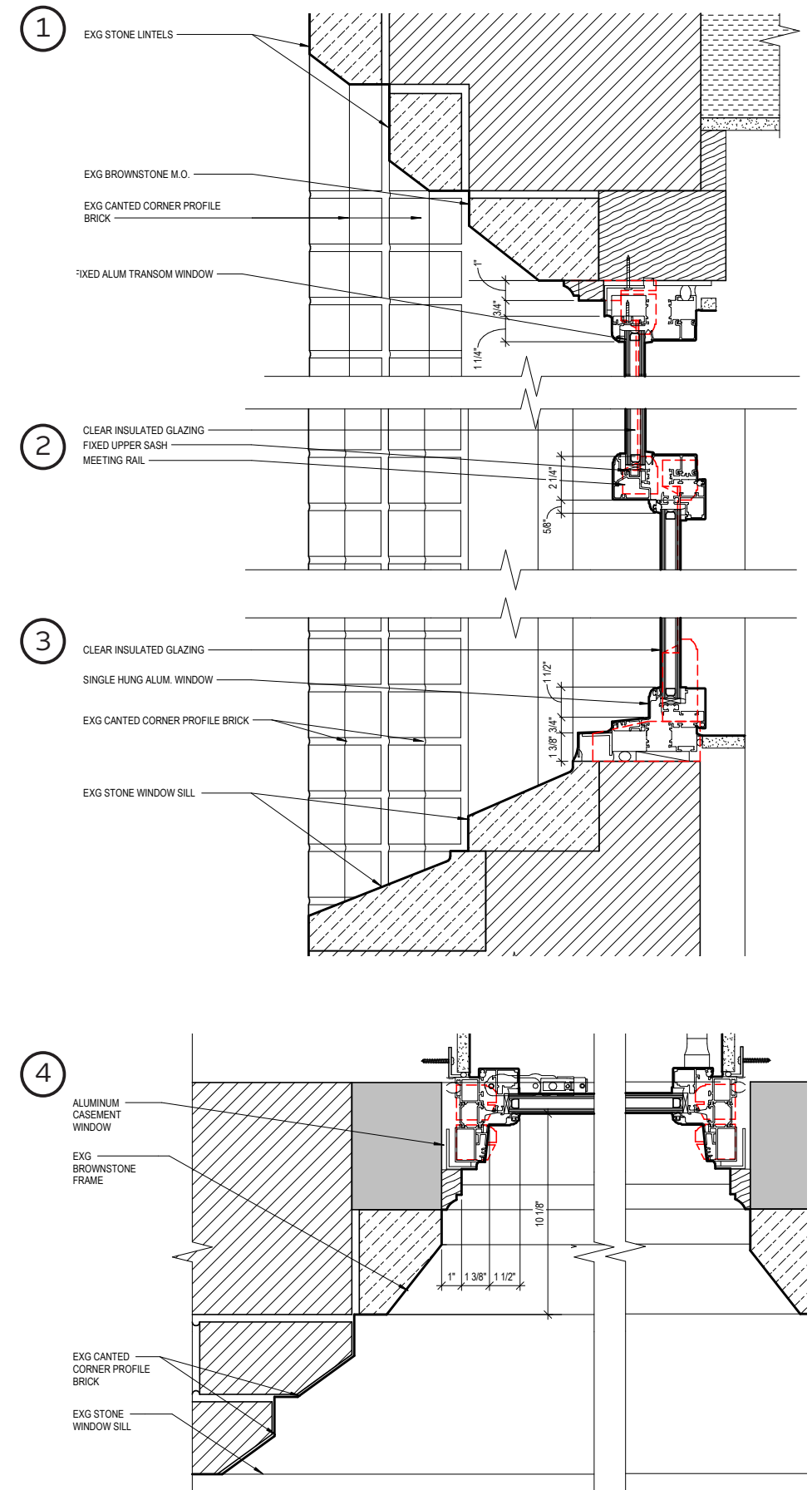


ELEVATION

### EXISTING



### PROPOSED



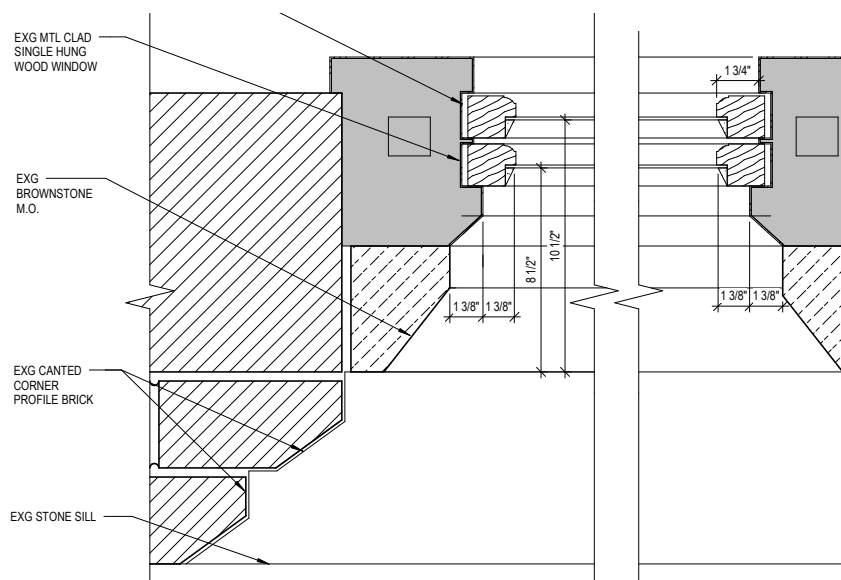
- Profiles based on Skyline Windows 500 OSC
- Window is composed of inswing casement and fixed upper sash

#### Glazing Calculation

Existing Glazing Area = 1,321.92 Sq In

Proposed Glazing Area = 1,261.44 Sq In

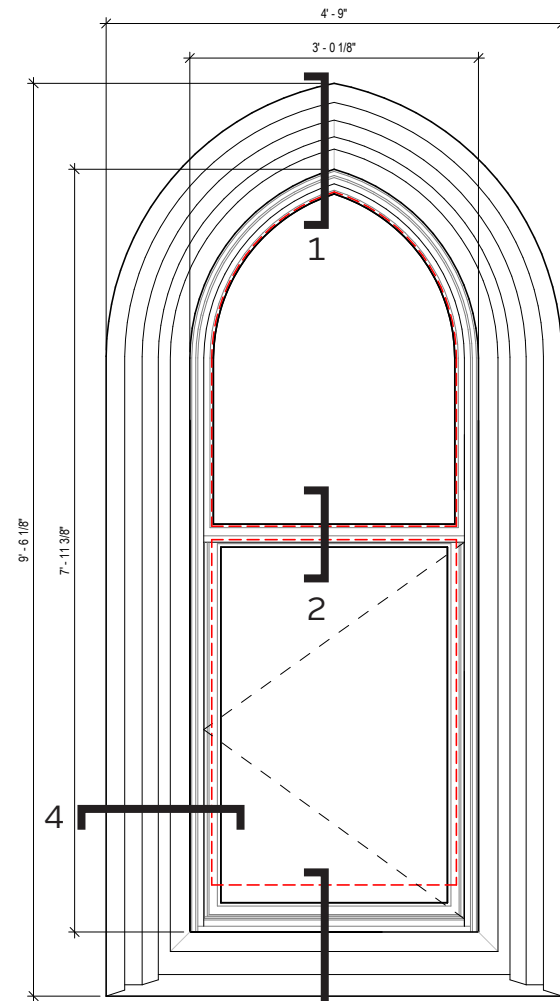
Change in Glazing Area = -4.58%



# SHERRED - TYPE 1

## WINDOW REPLACEMENT

Street & Close Facade



ELEVATION

- Profiles based on Skyline Windows 500 OSC
- Window is composed of inswing casement and fixed upper sash

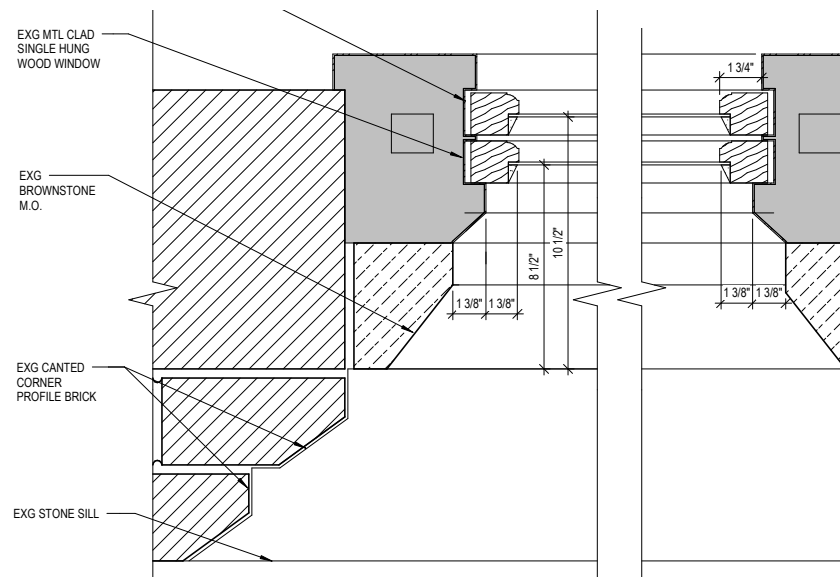
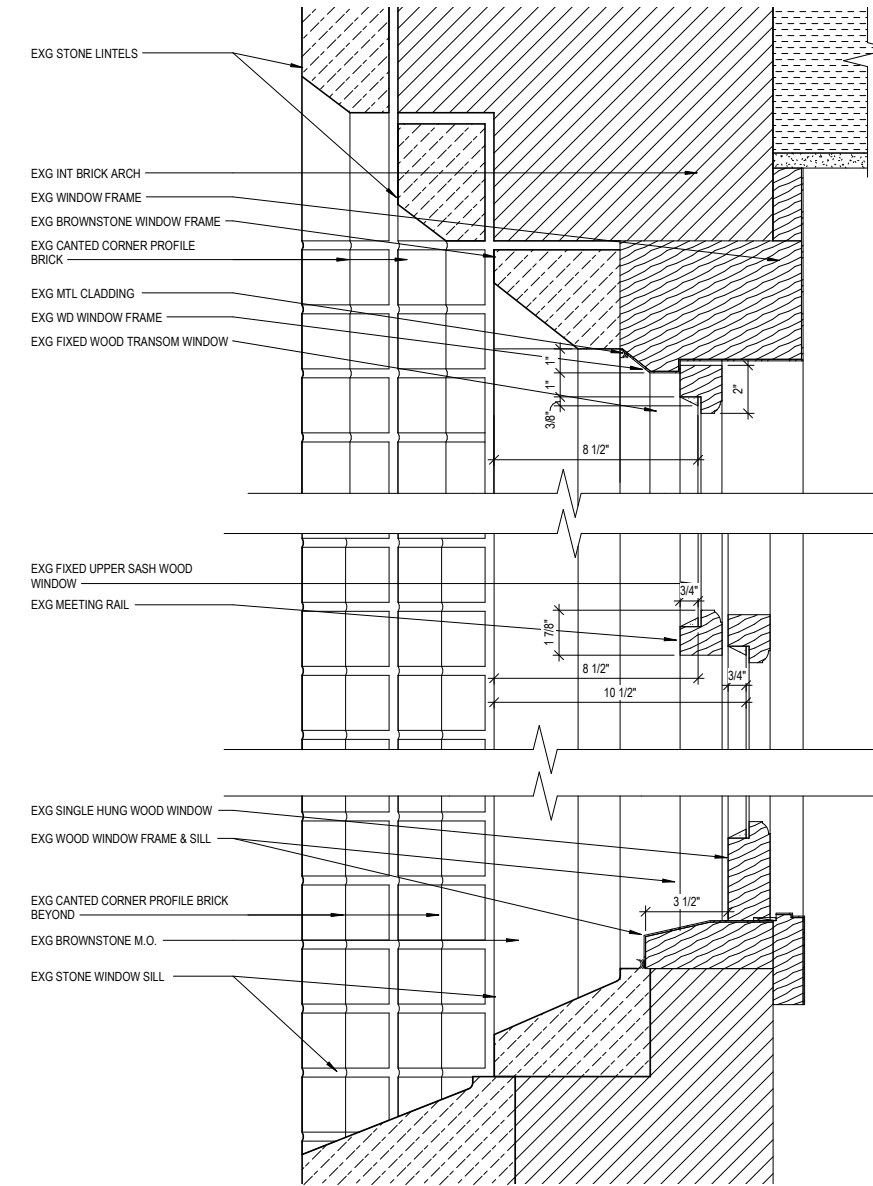
### Glazing Calculation

Existing Glazing Area = 2,426 Sq In

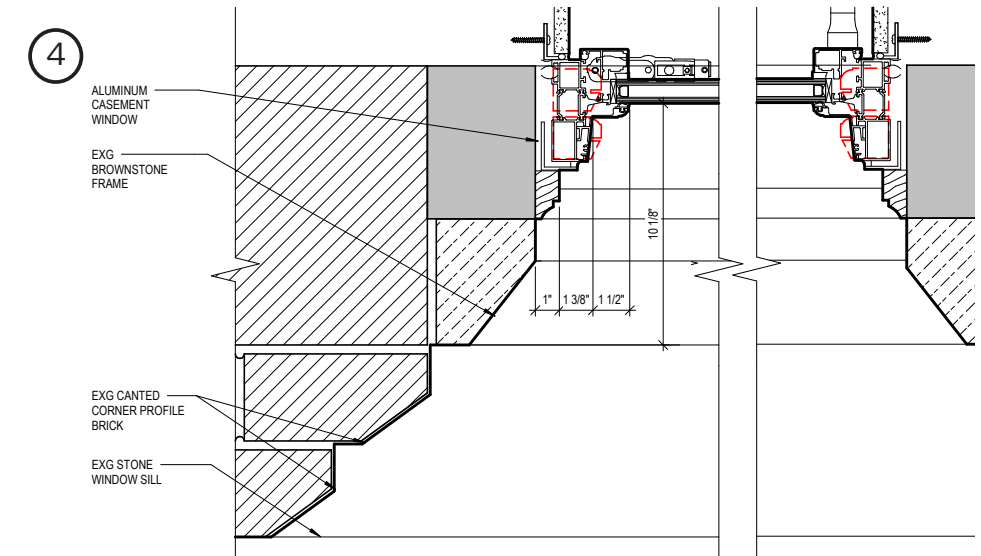
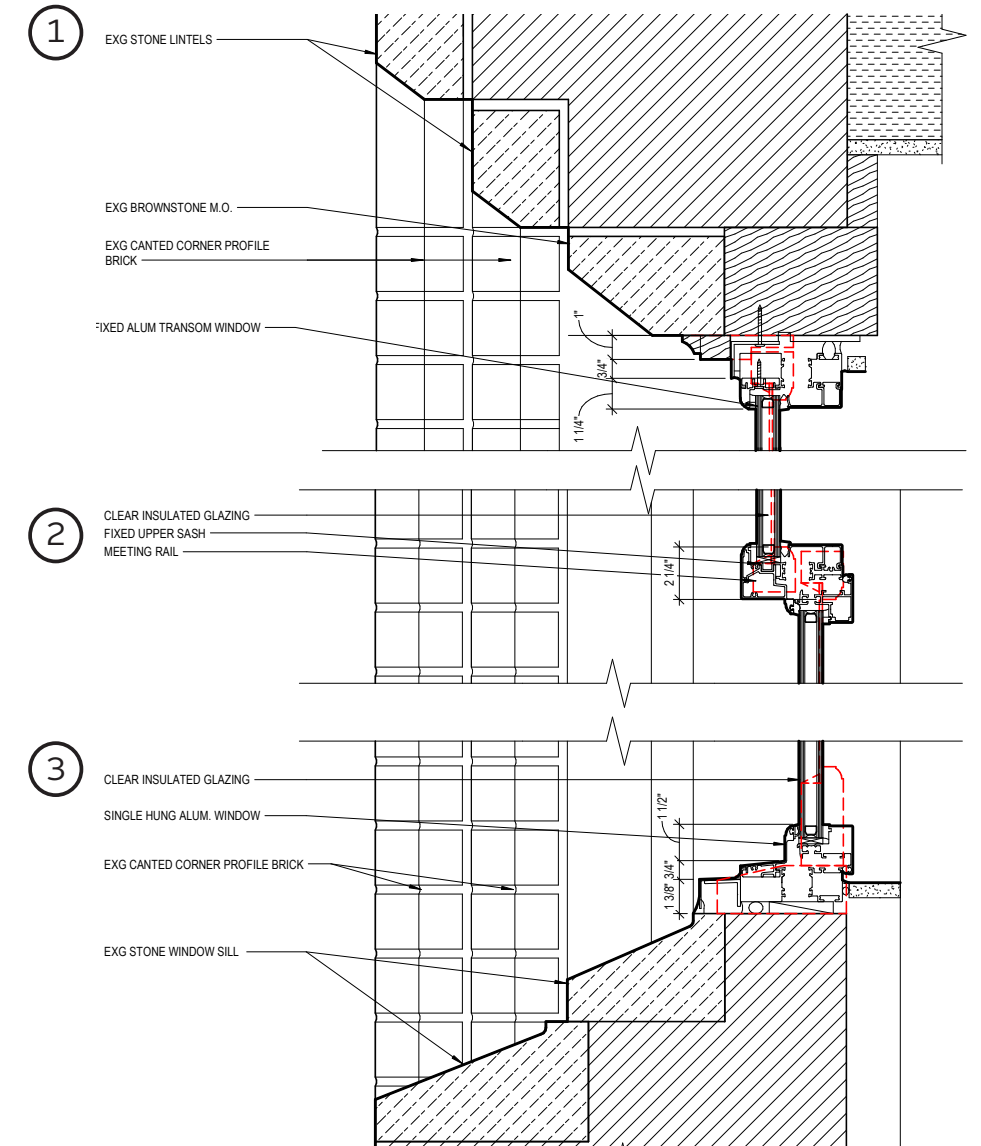
Proposed Glazing Area = 2,338.56 Sq In

Change in Glazing Area = -1.56%

### EXISTING



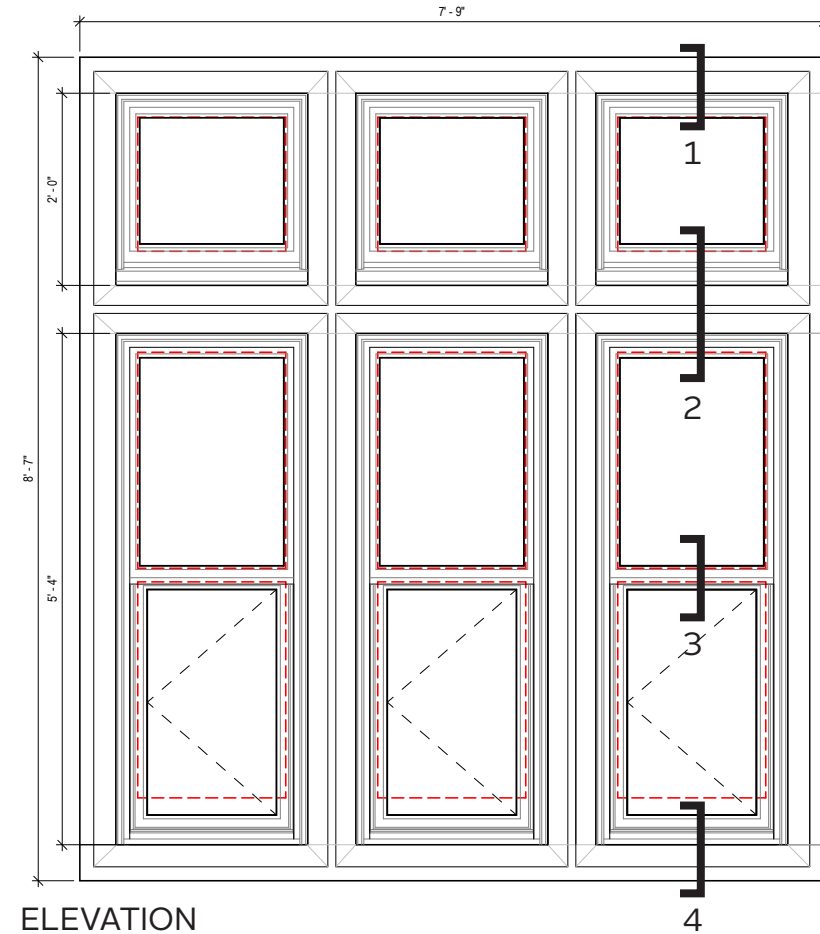
### PROPOSED



# SHERRED - TYPE 2

## WINDOW REPLACEMENT

Street Facade



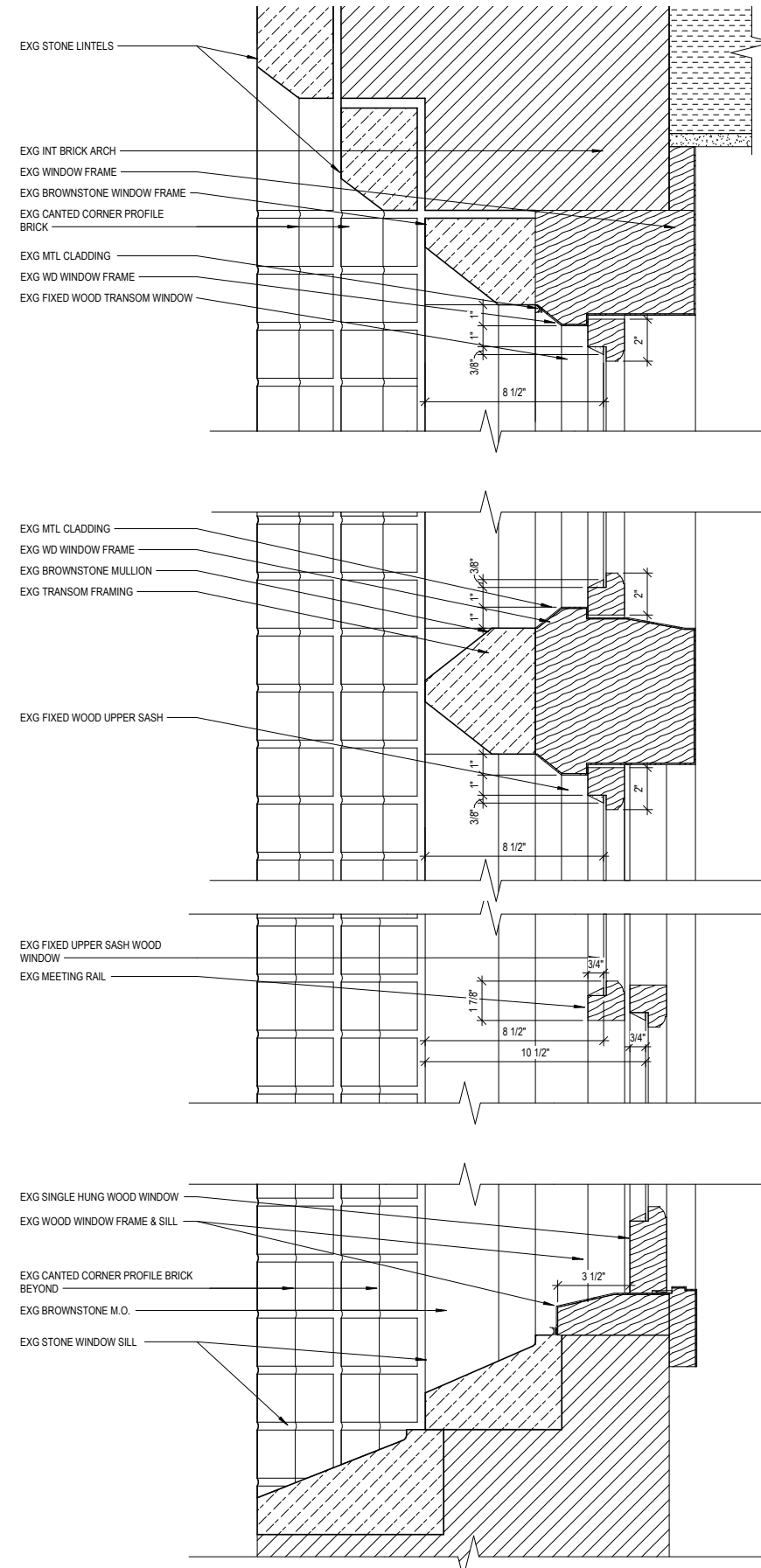
ELEVATION

- Profiles based on Skyline Windows 500 OSC
- Window grouping is composed of inswing casement, fixed upper sash and fixed transom

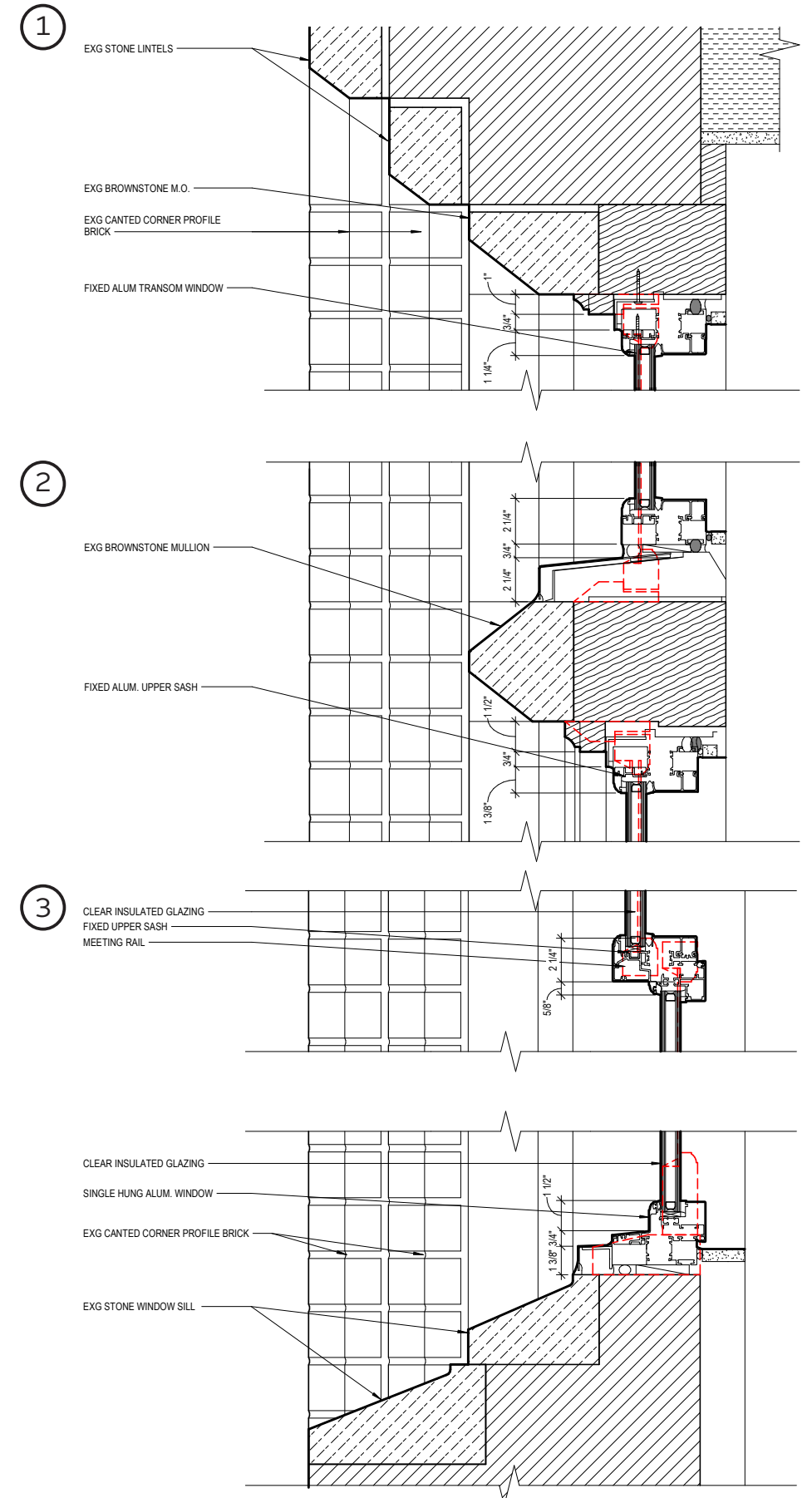
### Glazing Calculation

Existing Glazing Area = 3,926.88 Sq In  
 Proposed Glazing Area = 3,612.96 Sq In  
 Change in Glazing Area = -7.99%

### EXISTING



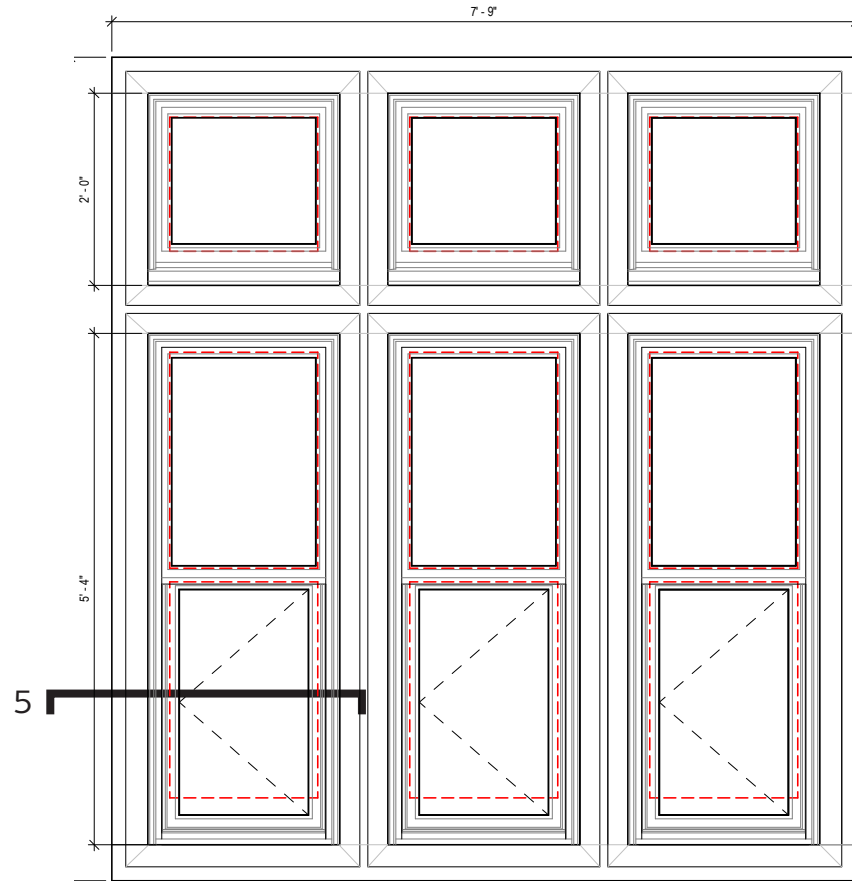
### PROPOSED



# SHERRED - TYPE 2

## WINDOW REPLACEMENT

Street Facade



ELEVATION

- Profiles based on Skyline Windows 500 OSC
- Window grouping is composed of inswing casement, fixed upper sash and fixed transom

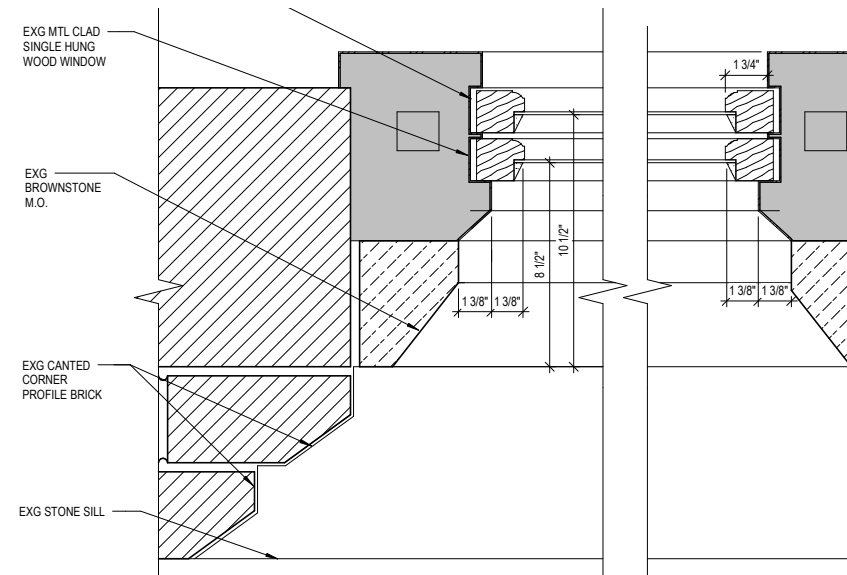
### Glazing Calculation

Existing Glazing Area = 3,926.88 Sq In

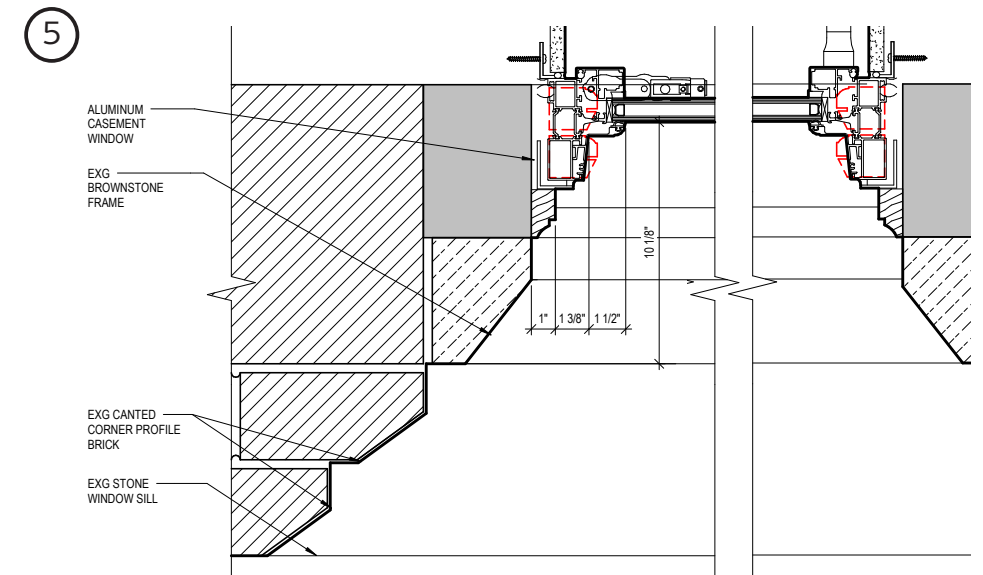
Proposed Glazing Area = 3,612.96 Sq In

Change in Glazing Area = -7.99%

### EXISTING



### PROPOSED

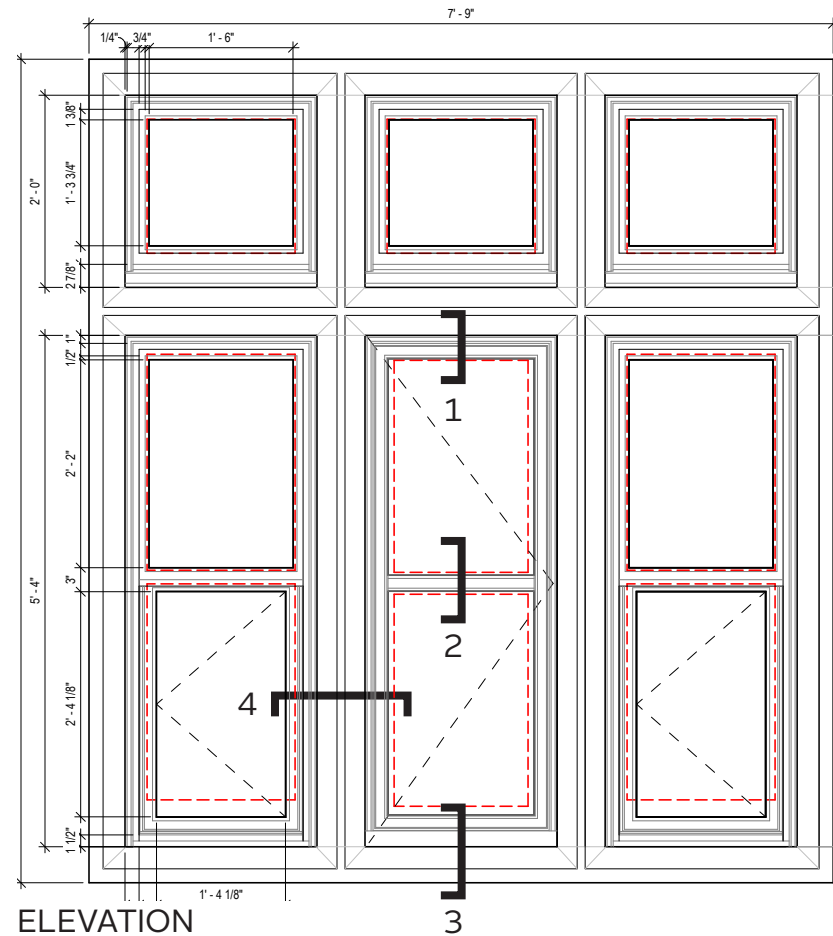


# SHERRED - TYPE 2F

## WINDOW REPLACEMENT

Close Facade

CENTER WINDOW OF TRIPLE IS FULL-HEIGHT CASEMENT FOR EGRESS TO FIRE ESCAPE, MATCHING EXISTING FUNCTION



- Profiles based on Skyline Windows 500 OSC and DL97
- Window grouping is composed of two inswing casements with fixed upper sash and fixed transom and a single full height outswing casement with fixed transom.

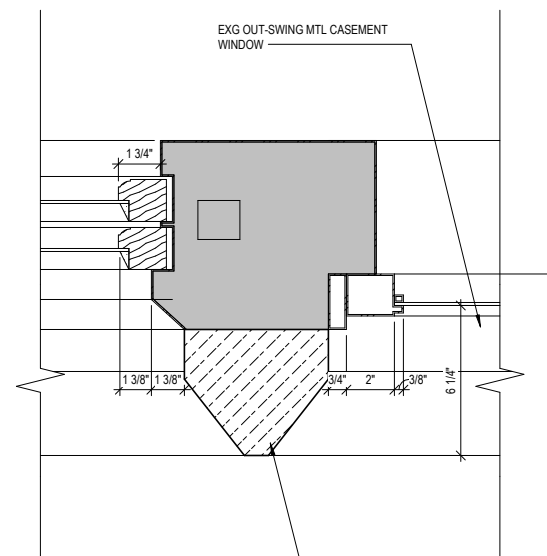
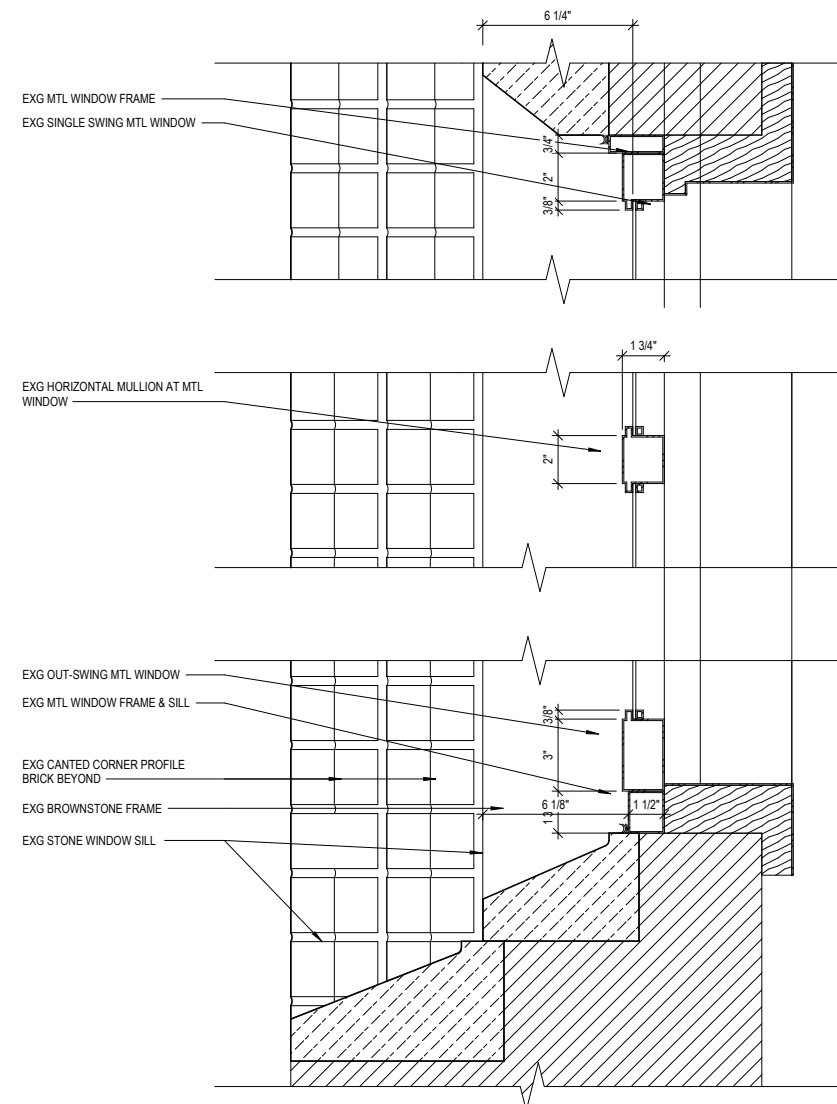
### Glazing Calculation

Existing Glazing Area = 3,816 Sq In

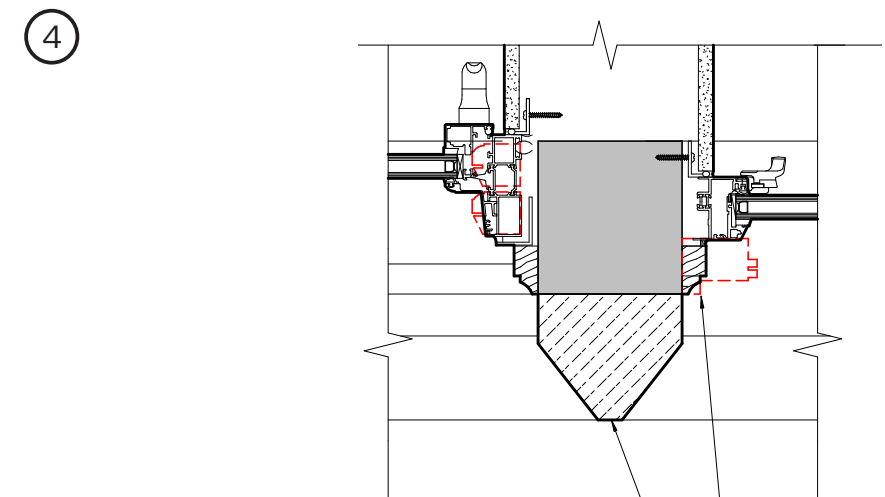
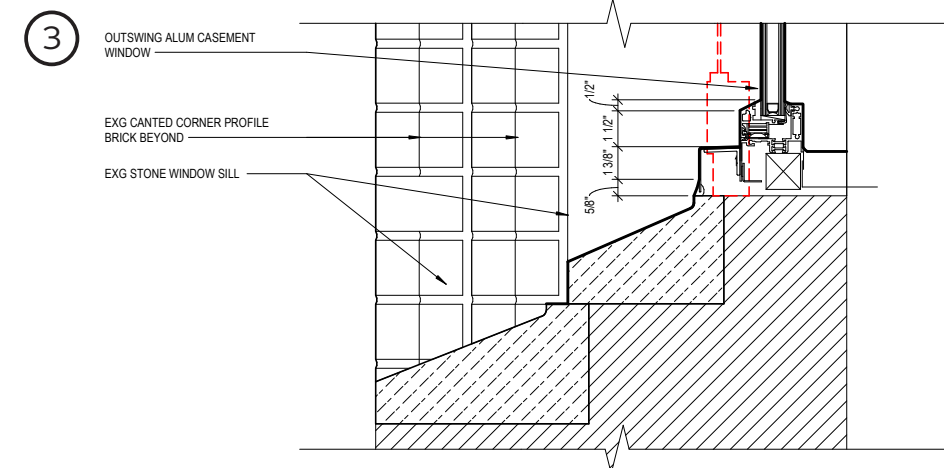
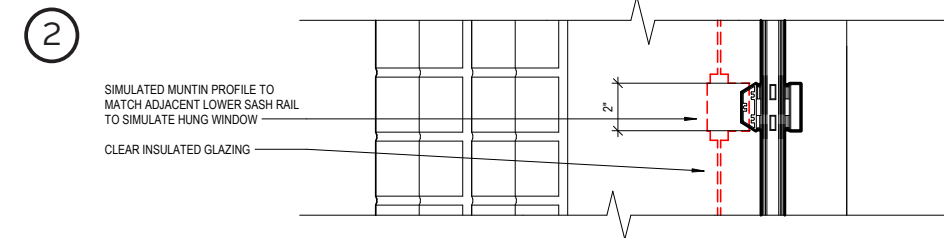
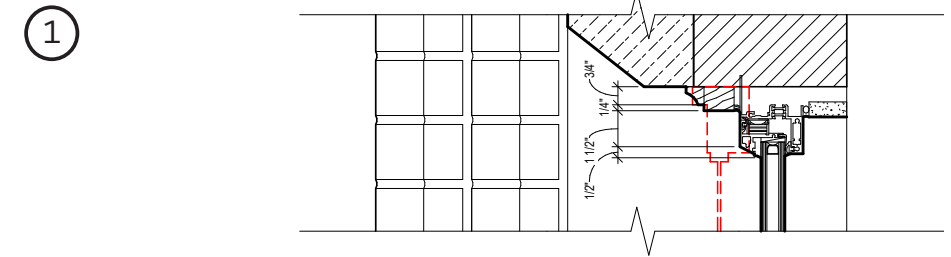
Proposed Glazing Area = 3,696.48 Sq In

Change in Glazing Area = -3.13%

### EXISTING



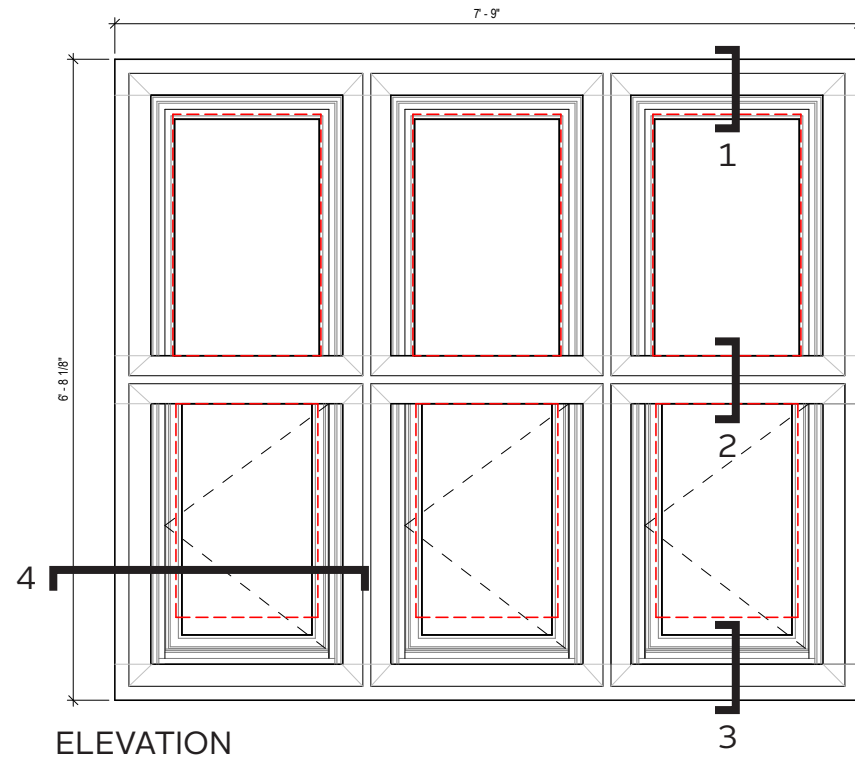
### PROPOSED



# SHERRED - TYPE 3

## WINDOW REPLACEMENT

Close Facade

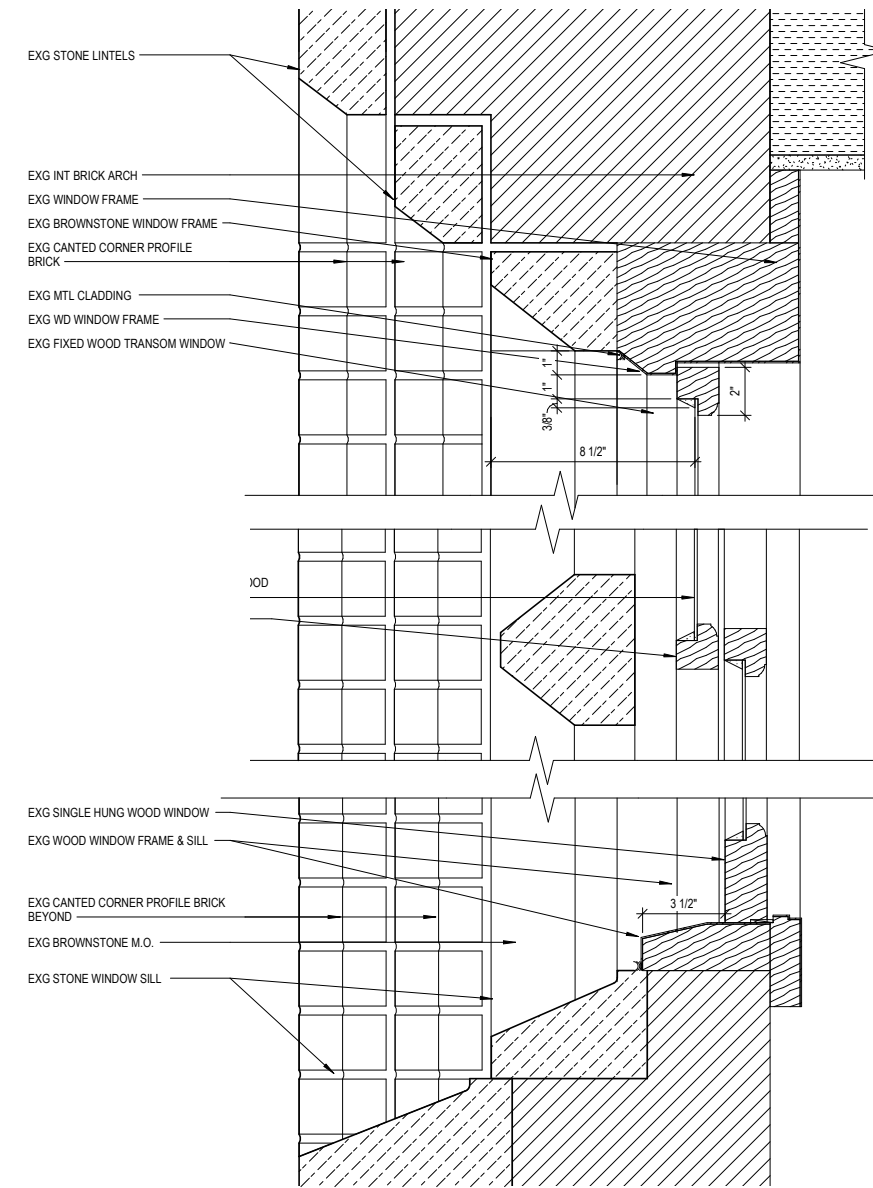


- Profiles based on Skyline Windows 500 OSC
- Window is composed of inswing casement and fixed upper sash

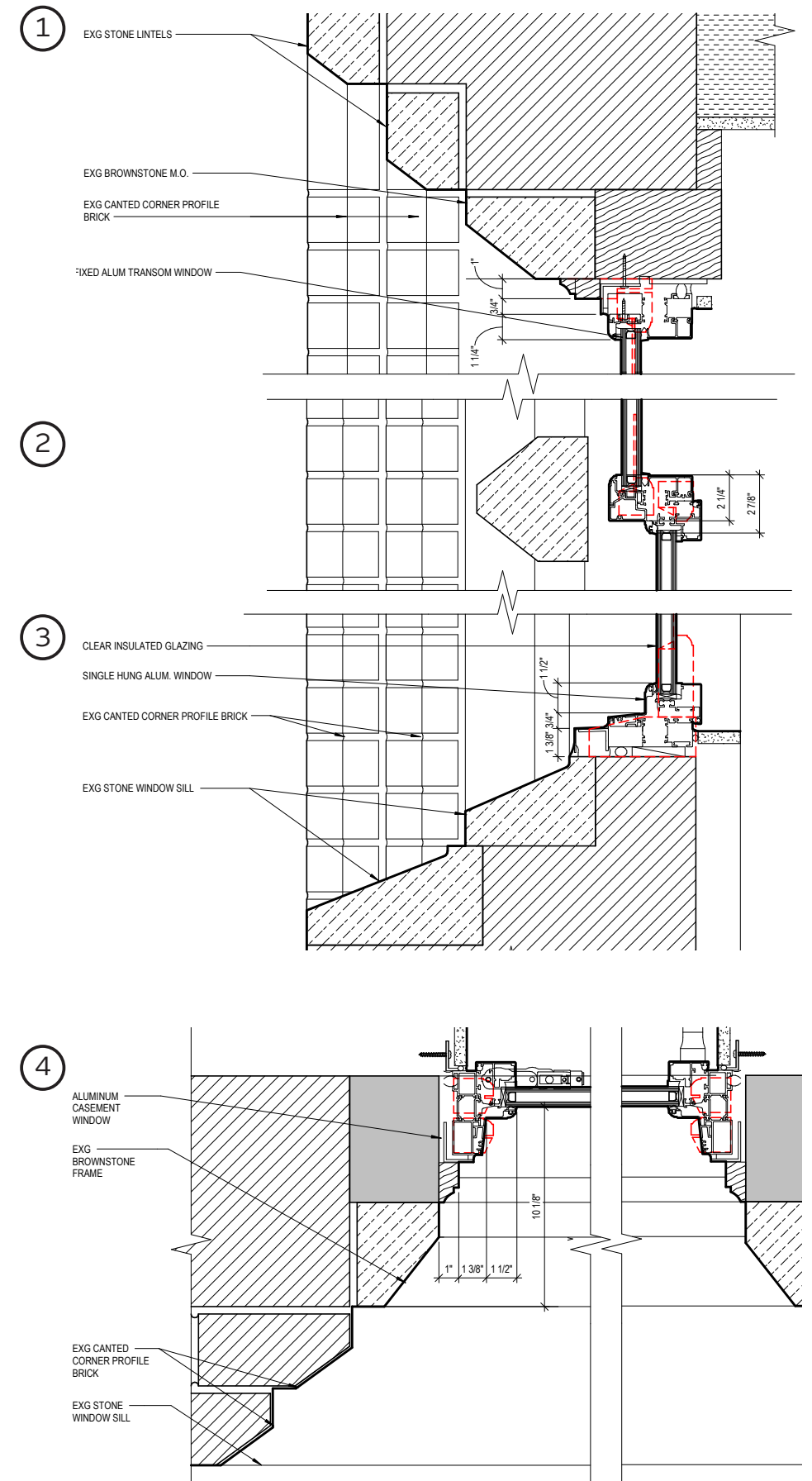
### Glazing Calculation

Existing Glazing Area = 3,096 Sq In  
 Proposed Glazing Area = 3,013.92 Sq In  
 Change in Glazing Area = -2.65%

### EXISTING



### PROPOSED

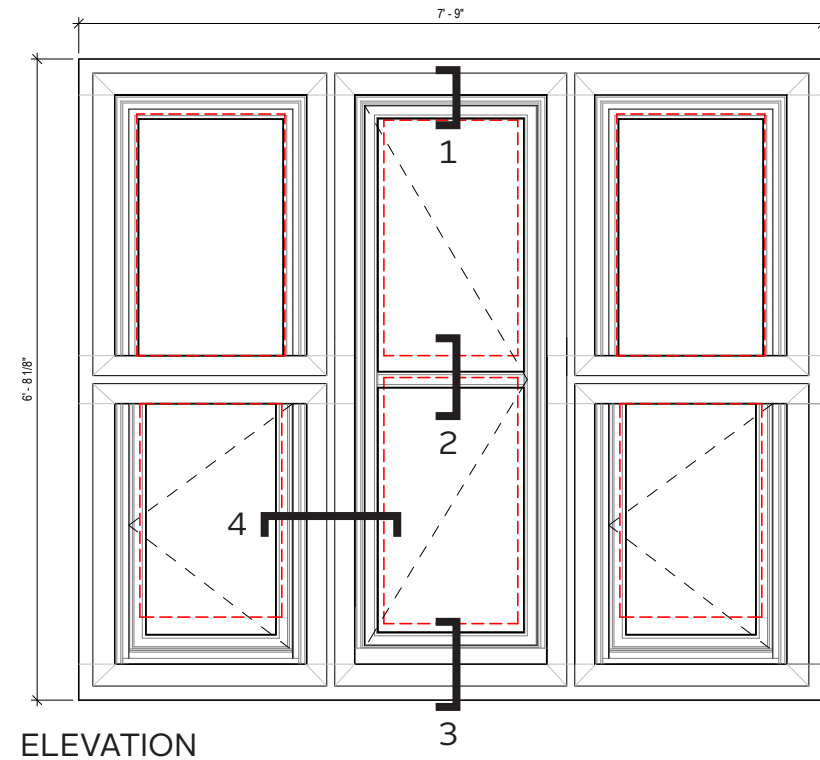


# SHERRED - TYPE 3F

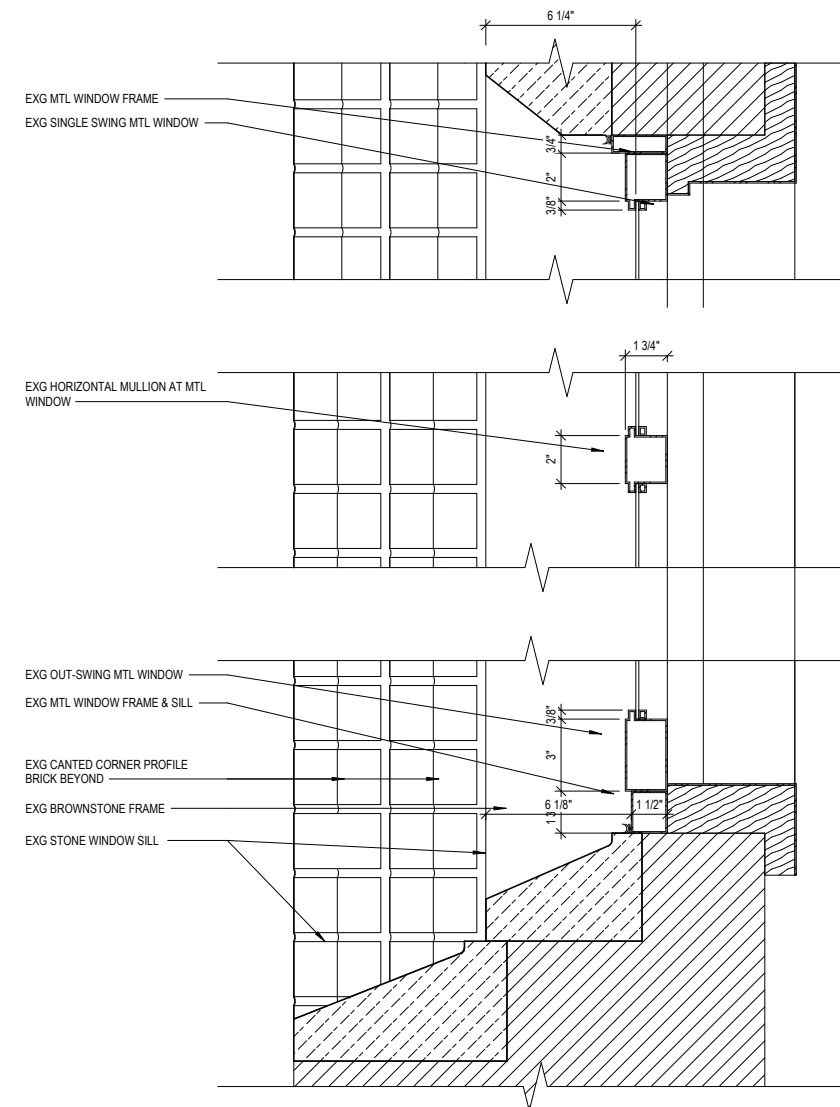
## WINDOW REPLACEMENT

Close Facade

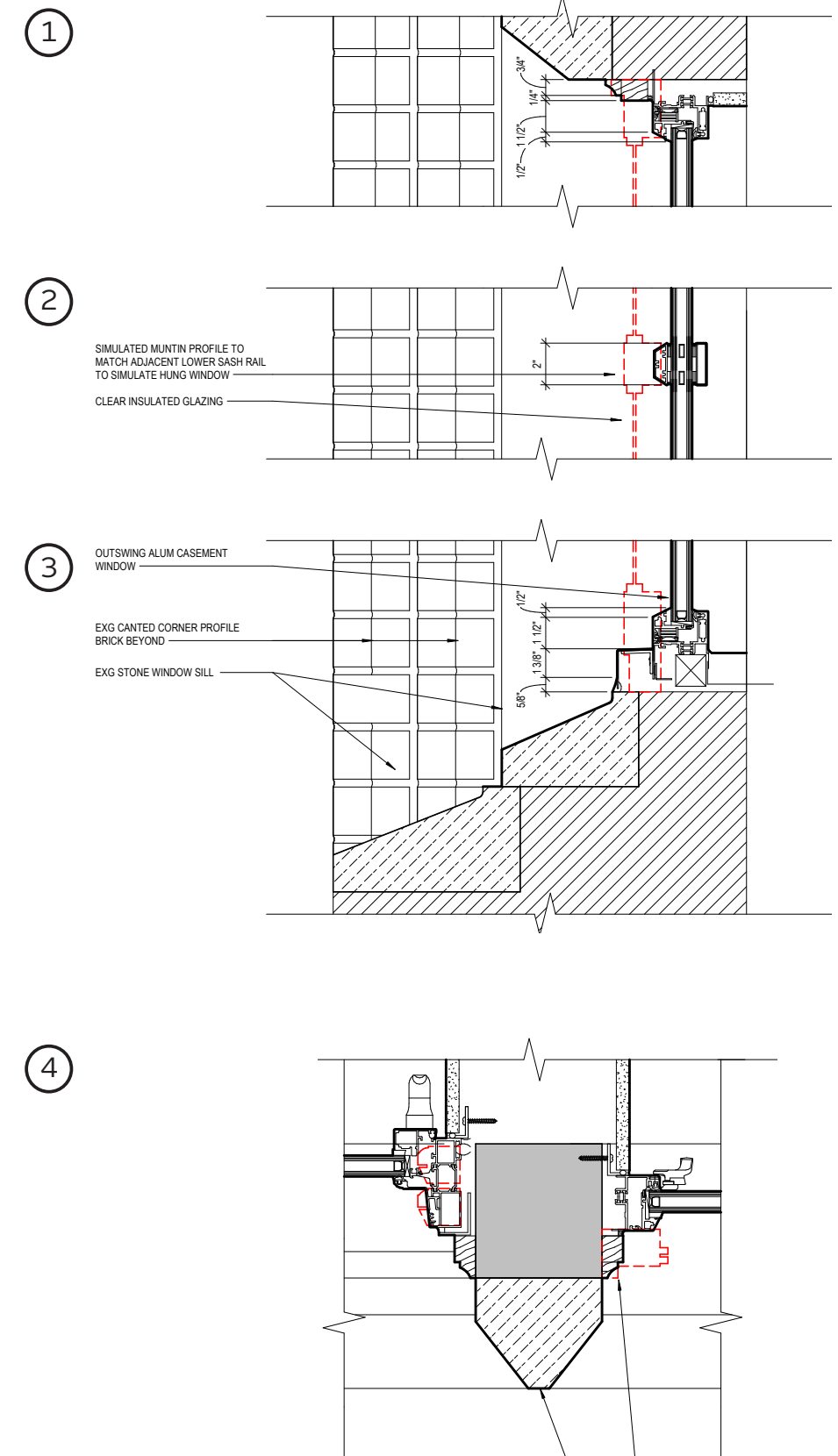
CENTER WINDOW OF TRIPLE IS FULL-HEIGHT CASEMENT FOR EGRESS TO FIRE ESCAPE, MATCHING EXISTING FUNCTION



### EXISTING



### PROPOSED



- Profiles based on Skyline Windows 500 OSC and DL97
- Window grouping is composed of two inswing casements with fixed upper sash and a single full height outswing casement.

#### Glazing Calculation

Existing Glazing Area = 3,072 Sq In  
 Proposed Glazing Area = 3,144 Sq In  
 Change in Glazing Area = +2.34%



# PRECEDENTS

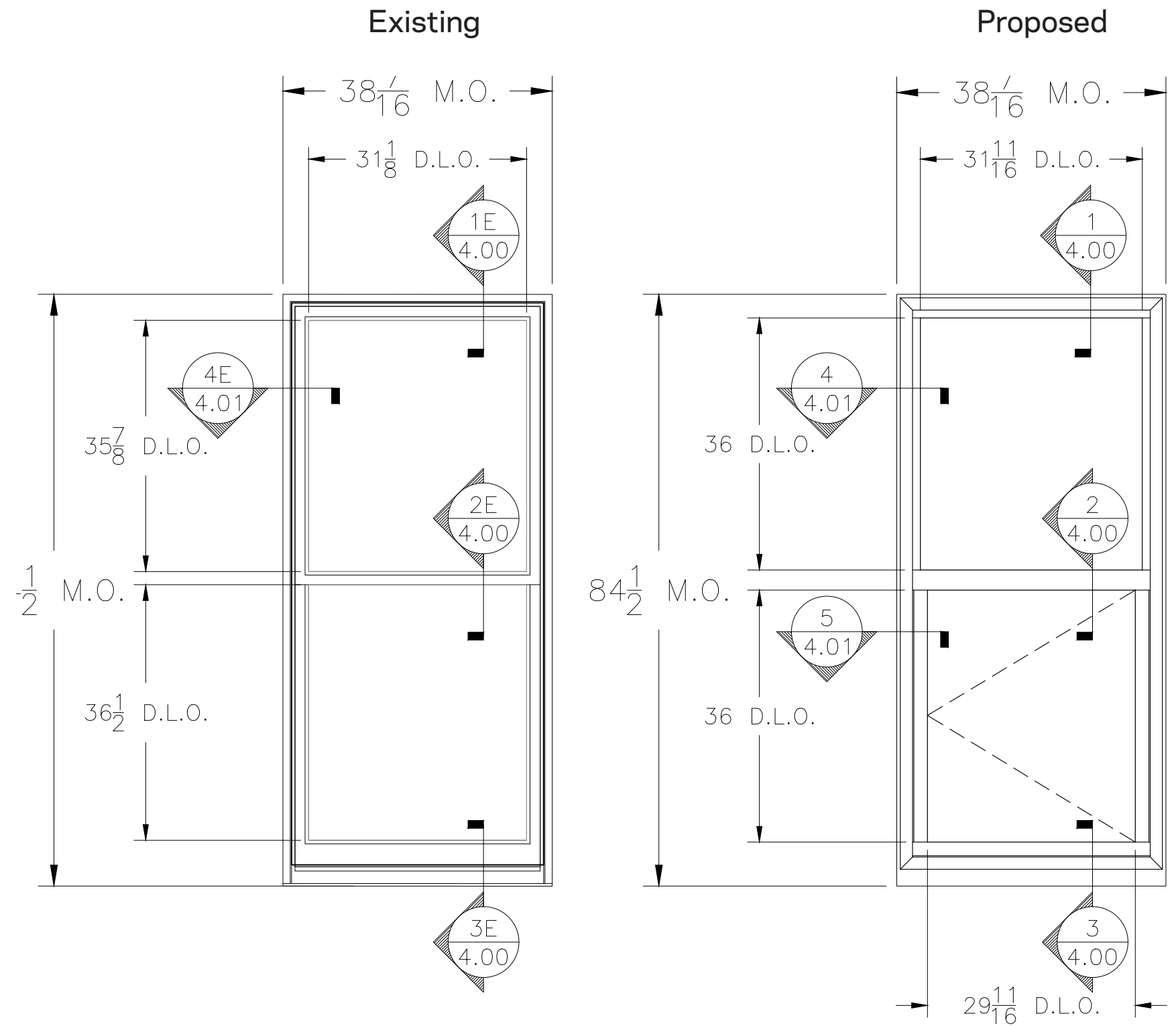
---

# 95 MADISON AVE

PRECEDENTS



95 MADISON AVE, LPC INDIVIDUAL LANDMARK  
MADISON SQUARE NORTH HISTORIC DISTRICT



GLAZING LOSS CALCULATION — A  
 EXISTING GLAZING AREA = 15.64 SQ. FT.  
 PROPOSED GLAZING AREA = 15.33 SQ. FT.  
 PROPOSED GLAZING AREA < EXISTING GLAZING  
 AREA; GLASS LOSS = -2.03%

# OTHER BUILDINGS

## PRECEDENTS



40 EXCHANGE PLACE



SURREY HOTEL 20 EAST 76TH STREET  
UPPER EAST SIDE HISTORIC DISTRICT



FLAT IRON BUILDING

**BEYER  
BLINDER  
BELLE**

# SHERRED WINDOW SCHEDULE

## APPENDIX

WINDOW SCHEDULE - SHERRED													
REV.	NUMBER	WINDOW TYPE/GR OUP	SIZE		MATERIAL	GLAZING	DETAIL			SASH LIMITER	WINDOW SHADES	COMMENTS	
			OPENING WIDTH	OPENING HEIGHT			HEAD	JAMB	SILL				
Basement Sherred													
	SH001	(none)	3'-2 1/4"	3'-9 1/4"	EXG.	EXG.						EXG TO REMAIN. REPLACED IN 2011 RENOVATION.	
	SH002	(none)	3'-2 1/4"	3'-9 1/4"	EXG.	EXG.						EXG TO REMAIN. REPLACED IN 2011 RENOVATION.	
	SH003	(none)	3'-2 1/4"	3'-9 1/4"	EXG.	EXG.						EXG TO REMAIN. REPLACED IN 2011 RENOVATION.	
	SH004	(none)	3'-2 1/4"	3'-9 1/4"	EXG.	EXG.						EXG TO REMAIN. REPLACED IN 2011 RENOVATION.	
	SH005	(none)	3'-2 1/4"	3'-9 1/4"	EXG.	EXG.						EXG TO REMAIN. REPLACED IN 2011 RENOVATION.	
	SH006	(none)	3'-2 1/4"	3'-9 1/4"	EXG.	EXG.						EXG TO REMAIN. REPLACED IN 2011 RENOVATION.	
	SH007	(none)	3'-2 1/4"	3'-9 1/4"	EXG.	EXG.						EXG TO REMAIN. REPLACED IN 2011 RENOVATION.	
	SH009	(none)	3'-2 1/4"	3'-9 1/4"	EXG.	EXG.						EXG TO REMAIN. REPLACED IN 2011 RENOVATION.	
	SH010	(none)	3'-2 1/4"	3'-9 1/4"	EXG.	EXG.						EXG TO REMAIN. REPLACED IN 2011 RENOVATION.	
	SH016	(none)	2'-4"	2'-6"	EXG.	EXG.						EXG TO REMAIN. REPLACED IN 2011 RENOVATION.	
	SH017	(none)	2'-2"	2'-6"	EXG.	EXG.						EXG TO REMAIN. REPLACED IN 2011 RENOVATION.	
Level 01 Sherred													
	SH101	WT	3'-3 1/2"	7'-11"			2/A-421 SIM.	7/A-421	1/A-421		24"	WT-03	
	SH102	WT	3'-3 1/2"	7'-11"			2/A-421 SIM.	7/A-421	1/A-421		24"	WT-03	
	SH103	WT	3'-3 1/2"	7'-11"			2/A-421 SIM.	7/A-421	1/A-421		24"	WT-03	
	SH104	WT	3'-3 1/2"	7'-11"			2/A-421 SIM.	7/A-421	1/A-421		24"	WT-03	
	SH105	WR	2'-9 1/2"	4'-2 1/2"		GL-02	2/A421	7/A-421	1/A-421		4"		ETCHED GLASS
	SH106	WR	2'-9 1/2"	4'-2 1/2"		GL-02	2/A421	7/A-421	1/A-421		4"		ETCHED GLASS
	SH107	WT	3'-3 1/2"	7'-11"			2/A-421 SIM.	7/A-421	1/A-421		24"	WT-03	
	SH108	WT	3'-3 1/2"	7'-11"			2/A-421 SIM.	7/A-421	1/A-421		24"	WT-03	
	SH109	WT	3'-3 1/2"	7'-11"			2/A-421 SIM.	7/A-421	1/A-421		24"	WT-03	
	SH110	WT	3'-3 1/2"	7'-11"			2/A-421 SIM.	7/A-421	1/A-421		24"	WT-03	
	SH111	WT	3'-3 1/2"	7'-11"			2/A-421 SIM.	7/A-421	1/A-421		24"	WT-03	
	SH112	WT	3'-3 1/2"	7'-11"			2/A-421 SIM.	7/A-421	1/A-421		24"	WT-03	
	SH113	WT	3'-3 1/2"	7'-11"			2/A-421 SIM.	7/A-421	1/A-421		24"	WT-03	
	SH114	WT	3'-3 1/2"	7'-11"			2/A-421 SIM.	7/A-421	1/A-421		24"	WT-03	
	SH115	WT	3'-3 1/2"	7'-11"			2/A-421 SIM.	7/A-421	1/A-421		24"	WT-03	
	SH116	WT	3'-3 1/2"	7'-11"			2/A-421 SIM.	7/A-421	1/A-421		24"	WT-03	
	SH117	WT	3'-3 1/2"	7'-11"			2/A-421 SIM.	7/A-421	1/A-421		24"	WT-03	
	SH118	WT	3'-3 1/2"	7'-11"			2/A-421 SIM.	7/A-421	1/A-421		24"	WT-03	
Level 2 Sherred													
	SH201A	WQ	2'-0"	2'-0"			4/A-421	4/A-421 SIM.	3/A-421		-	-	
	SH201B	WQ	2'-0"	2'-0"			4/A-421	4/A-421 SIM.	3/A-421		-	-	
	SH201C	WQ	2'-0"	2'-0"			4/A-421	4/A-421 SIM.	3/A-421		-	-	
	SH201D	WR/W9	2'-0"	5'-4"			2/A-421	7/A-421	1/A-421		24"	WT-03	WT WIDTH TO INCLUDE SH201E AND SH201F. HEIGHT TO INCLUDE TRANSOMS ABOVE
	SH201E	WR/W9	2'-0"	5'-4"			2/A-421	7/A-421	1/A-421		24"	-	
	SH201F	WR/W9	2'-0"	5'-4"			2/A-421	7/A-421	1/A-421		24"	-	
	SH202A	WQ	2'-0"	2'-0"			4/A-421	4/A-421 SIM.	3/A-421		-	-	
	SH202B	WQ	2'-0"	2'-0"			4/A-421	4/A-421 SIM.	3/A-421		-	-	
	SH202C	WQ	2'-0"	2'-0"			4/A-421	4/A-421 SIM.	3/A-421		-	-	
	SH202D	WR/W9	2'-0"	5'-4"			2/A-421	7/A-421	1/A-421		24"	WT-03	WT WIDTH TO INCLUDE SH202E AND SH202F. HEIGHT TO INCLUDE TRANSOMS ABOVE
	SH202E	WR/W9	2'-0"	5'-4"			2/A-421	7/A-421	1/A-421		24"	-	
	SH202F	WR/W9	2'-0"	5'-4"			2/A-421	7/A-421	1/A-421		24"	-	
	SH204A	WQ	2'-0"	2'-0"			4/A-421	4/A-421 SIM.	3/A-421		-	-	
	SH204B	WQ	2'-0"	2'-0"			4/A-421	4/A-421 SIM.	3/A-421		-	-	
	SH204C	WQ	2'-0"	2'-0"			4/A-421	4/A-421 SIM.	3/A-421		-	-	
	SH204D	WR/W9	2'-0"	5'-4"			2/A-421	7/A-421	1/A-421		24"	WT-03	WT WIDTH TO INCLUDE SH204E AND SH204F. HEIGHT TO INCLUDE TRANSOMS ABOVE
	SH204E	WR/W9	2'-0"	5'-4"			2/A-421	7/A-421	1/A-421		24"	-	
	SH204F	WR/W9	2'-0"	5'-4"			2/A-421	7/A-421	1/A-421		24"	-	
	SH205A	WQ	2'-0"	2'-0"			4/A-421	4/A-421 SIM.	3/A-421		-	-	
	SH205B	WQ	2'-0"	2'-0"			4/A-421	4/A-421 SIM.	3/A-421		-	-	
	SH205C	WQ	2'-0"	2'-0"			4/A-421	4/A-421 SIM.	3/A-421		-	-	
	SH205D	WR/W9	2'-0"	5'-4"			2/A-421	7/A-421	1/A-421		24"	WT-03	WT WIDTH TO INCLUDE SH205E AND SH205F. HEIGHT TO INCLUDE TRANSOMS ABOVE
	SH205E	WR/W9	2'-0"	5'-4"			2/A-421	7/A-421	1/A-421		24"	-	
	SH205F	WR/W9	2'-0"	5'-4"			2/A-421	7/A-421	1/A-421		24"	-	
	SH206A	WQ	2'-0"	2'-0"			4/A-421	4/A-421 SIM.	3/A-421		-	-	
	SH206B	WQ	2'-0"	2'-0"			4/A-421	4/A-421 SIM.	3/A-421		-	-	
	SH206C	WQ	2'-0"	2'-0"			4/A-421	4/A-421 SIM.	3/A-421		-	-	
	SH206D	WR/W9	2'-0"	5'-4"			2/A-421	7/A-421	1/A-421		24"	WT-03	WT WIDTH TO INCLUDE SH206E AND SH206F. HEIGHT TO INCLUDE TRANSOMS ABOVE
	SH206E	WR/W9	2'-0"	5'-4"			2/A-421	7/A-421	1/A-421		24"	-	
	SH206F	WR/W9	2'-0"	5'-4"			2/A-421	7/A-421	1/A-421		24"	-	
	SH207A	WQ	2'-0"	2'-0"			4/A-421	4/A-421 SIM.	3/A-421		-	-	
	SH207B	WQ	2'-0"	2'-0"			4/A-421	4/A-421 SIM.	3/A-421		-	-	
	SH207C	WQ	2'-0"	2'-0"			4/A-421	4/A-421 SIM.	3/A-421		-	-	
	SH207D	WR/W8	2'-0"	5'-4"			2/A-421	7/A-421	1/A-421		24"	WT-03	WT WIDTH TO INCLUDE SH207E AND SH207F. HEIGHT TO INCLUDE TRANSOMS ABOVE
	SH207E	WS/W8	2'-0"	5'-4"			1/A-422	2/A-422	1/A-422		24"	-	
	SH207F	WR/W8	2'-0"	5'-4"			2/A-421	7/A-421	1/A-421		24"	-	
	SH210A	WQ	2'-0"	2'-0"			4/A-421	4/A-421 SIM.	3/A-421		-	-	
	SH210B	WQ	2'-0"	2'-0"			4/A-421	4/A-421 SIM.	3/A-421		-	-	
	SH210C	WQ	2'-0"	2'-0"			4/A-421	4/A-421 SIM.	3/A-421		-	-	
	SH210D	WR/W8	2'-0"	5'-4"			2/A-421	7/A-421	1/A-421		24"	WT-03	WT WIDTH TO INCLUDE SH210D AND SH210F. HEIGHT TO INCLUDE TRANSOMS ABOVE
	SH210E	WS/W8	2'-0"	5'-4"			1/A-422	2/A-422	1/A-422		24"	-	
	SH210F	WR/W8	2'-0"	5'-4"			2/A-421	7/A-421	1/A-421		24"	-	
	SH211A	WQ	2'-0"	2'-0"			4/A-421	4/A-421 SIM.	3/A-421		-	-	
	SH211B	WQ	2'-0"	2'-0"			4/A-421	4/A-421 SIM.	3/A-421		-	-	
	SH211C	WQ	2'-0"	2'-0"			4/A-421	4/A-421 SIM.	3/A-421		-	-	
	SH211D	WR/W9	2'-0"	5'-4"			2/A-421	7/A-421	1/A-421		24"	WT-03	WT WIDTH TO INCLUDE SH211E AND SH211F. HEIGHT TO INCLUDE TRANSOMS ABOVE
	SH211E	WR/W9	2'-0"	5'-4"			2/A-421	7/A-421	1/A-421		24"	-	
	SH211F	WR/W9	2'-0"	5'-4"			2/A-421	7/A-421	1/A-421		24"	-	

Level 3 Sherred													
REV.	NUMBER	WINDOW TYPE/GR OUP	SIZE	MATERIAL	GLAZING	DETAIL	SASH LIMITER	WINDOW SHADES	COMMENTS				
REV.	NUMBER	WINDOW TYPE/GR OUP	OPENING WIDTH	OPENING HEIGHT	MATERIAL	GLAZING	HEAD	JAMB	SILL	SASH LIMITER	WINDOW SHADES	COMMENTS	
	SH301A	WR/W7	2'-0"	5'-11 1/4"			2/A-421	7/A-421	1/A-421		24"	WT-03	ARCHED M.O., PROVIDE CONT BLOCKING: WT WIDTH TO INCLUDE SH301B AND SH301C
	SH301B	WR/W7	2'-0"	5'-11 1/4"			2/A-421	7/A-421	1/A-421		24"	-	
	SH301C	WR/W7	2'-0"	5'-11 1/4"			2/A-421	7/A-421	1/A-421		24"	-	
	SH302A	WR/W7	2'-0"	5'-11 1/4"			2/A-421	7/A-421	1/A-421		24"	WT-03	ARCHED M.O., PROVIDE CONT BLOCKING: WT WIDTH TO INCLUDE SH302B AND SH302C
	SH302B	WR/W7	2'-0"	5'-11 1/4"			2/A-421	7/A-421	1/A-421		24"	-	
	SH302C	WR/W7	2'-0"	5'-11 1/4"			2/A-421	7/A-421	1/A-421		24"	-	
	SH304A	WR/W7	2'-0"	5'-11 1/4"			2/A-421	7/A-421	1/A-421		24"	WT-03	ARCHED M.O., PROVIDE CONT BLOCKING: WT WIDTH TO INCLUDE SH30B AND SH304C
	SH304B	WR/W7	2'-0"	5'-11 1/4"			2/A-421	7/A-421	1/A-421		24"	-	
	SH304C	WR/W7	2'-0"	5'-11 1/4"			2/A-421	7/A-421	1/A-421		24"	-	
	SH305A	WR/W7	2'-0"	5'-11 1/4"			2/A-421	7/A-421	1/A-421		24"	WT-03	ARCHED M.O., PROVIDE CONT BLOCKING: WT WIDTH TO INCLUDE SH305B AND SH305C
	SH305B	WR/W7	2'-0"	5'-11 1/4"			2/A-421	7/A-421	1/A-421		24"	-	
	SH305C	WR/W7	2'-0"	5'-11 1/4"			2/A-421	7/A-421	1/A-421		24"	-	
	SH306A	WR/W7	2'-0"	5'-11 1/4"			2/A-421	7/A-421	1/A-421		24"	WT-03	ARCHED M.O., PROVIDE CONT BLOCKING: WT WIDTH TO INCLUDE SH306B AND SH306C
	SH306B	WR/W7	2'-0"	5'-11 1/4"			2/A-421	7/A-421	1/A-421		24"	-	
	SH306C	WR/W7	2'-0"	5'-11 1/4"			2/A-421	7/A-421	1/A-421		24"	-	
	SH307A	WR/W6	2'-0"	5'-11 1/4"			2/A-421	7/A-421	1/A-421		24"	WT-03	ARCHED M.O., PROVIDE CONT BLOCKING: WT WIDTH TO INCLUDE SH307B AND SH307C

June 9, 2026  
Public Hearing

The current proposal is:

Preservation Department – Item 6, LPC-26-10584

**402 West 21st Street – Chelsea Historic District**  
**Borough of Manhattan**

To testify virtually, please join Zoom

**Webinar ID:** 165 868 4773

**Passcode:** 126605

By Phone: 646-828-7666 (NY)

833-435-1820 (Toll-free)

833-568-8864 (Toll-free)

**Note:** If you want to testify virtually on an item, join the Zoom webinar at the agenda's "Be Here by" time (about an hour in advance). When the Chair indicates it's time to testify, "raise your hand" via the Zoom app if you want to speak (\*9 on the phone). Those who signed up in advance will be called first.