

April 21, 2026
Public Hearing

The current proposal is:

Preservation Department – Item 5, LPC-26-09781

549 West 26th Street – West Chelsea Historic District
Borough of Manhattan

To testify virtually, please join Zoom

Webinar ID: 160 200 9644

Passcode: 979898

By Phone: 646-828-7666 (NY)

833-435-1820 (Toll-free)

833-568-8864 (Toll-free)

Note: If you want to testify virtually on an item, join the Zoom webinar at the agenda's "Be Here by" time (about an hour in advance). When the Chair indicates it's time to testify, "raise your hand" via the Zoom app if you want to speak (*9 on the phone). Those who signed up in advance will be called first.

549 W 26TH STREET

LANDMARKS PRESENTATION



KARMA GALLERY
FOR
KARMA GALLERY

REPRESENTATIVE OF DESIGN INTENT ONLY. IT IS NOT A PHOTOREALISTIC REPRESENTATION OF ACTUAL MATERIALS PROPOSED AND AS SUCH SHOULD BE CONSIDERED PRELIMINARY AT ALL STAGES.
SCHEMATIC DESIGN ONLY, ALL DIMENSIONS TO BE CONFIRMED ON SITE
NEW YORK, NEW YORK

4/7/2026

T001.00

SCALE:

COVER

studioMDA

PROJECT NO: 881



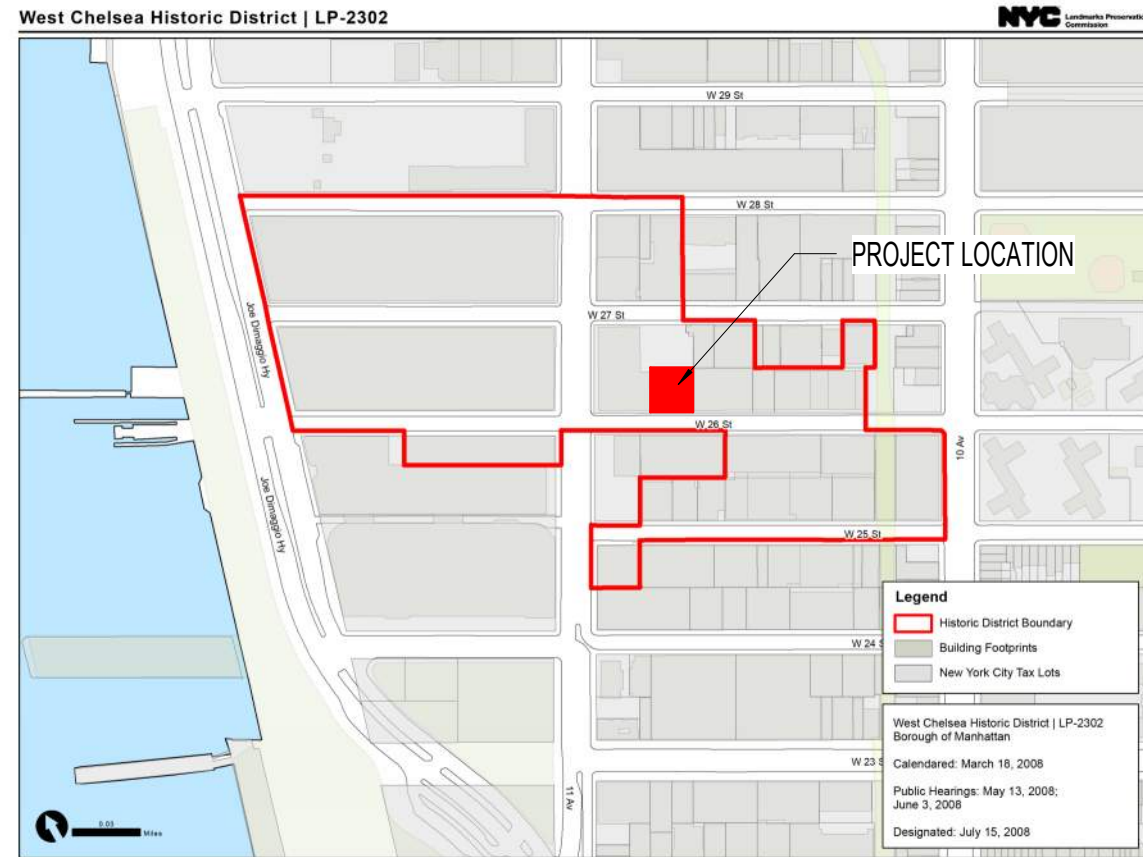
EXISTING SOUTH FACADE



PREVIOUSLY APPROVED SOUTH FACADE SCHEMATIC
RENDERINGS FOR DESIGN INTENT ONLY



CURRENT SOUTH FACADE



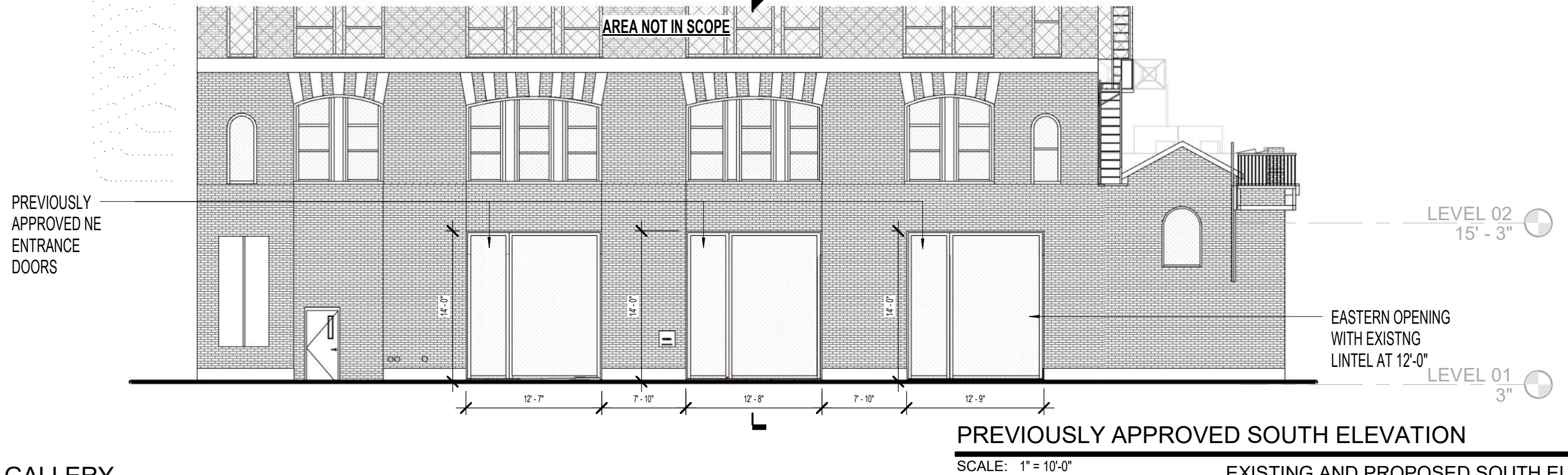
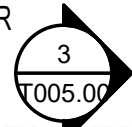
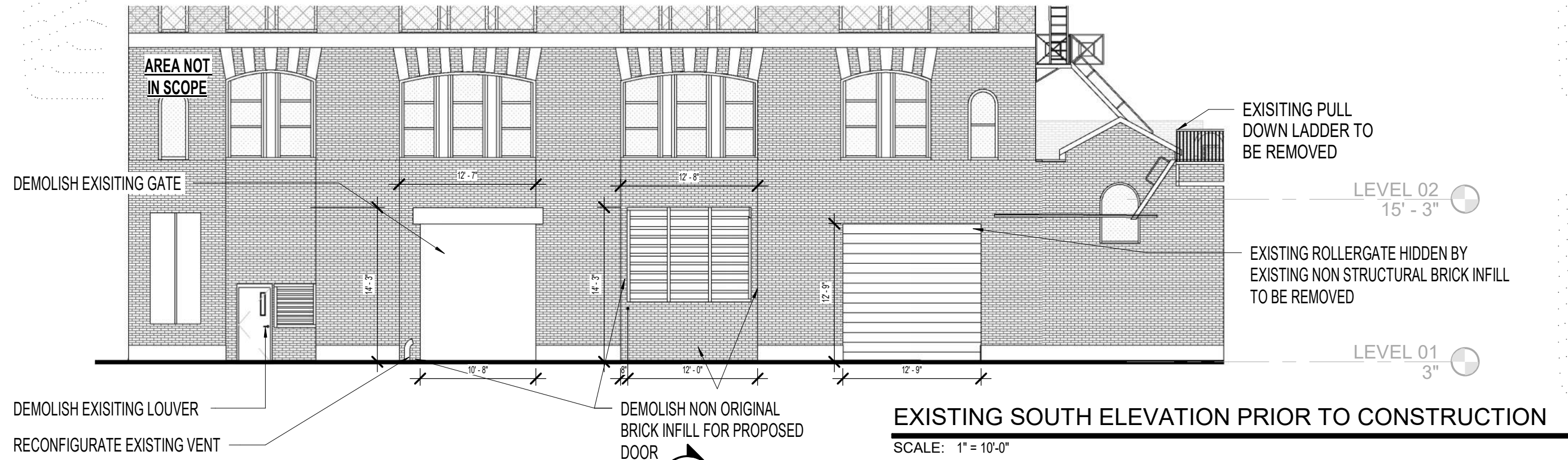
LANDMARK PLAN



STREETSCAPE PHOTO 1 - W26TH STREET - HISTORIC PHOTO 1915



STREETSCAPE PHOTO 2 - W26TH STREET - HISTORIC 1940s TAX PHOTO



KARMA GALLERY
FOR
KARMA GALLERY

REPRESENTATIVE OF DESIGN INTENT ONLY. IT IS NOT A PHOTOREALISTIC REPRESENTATION OF ACTUAL MATERIALS PROPOSED AND AS SUCH SHOULD BE CONSIDERED PRELIMINARY AT ALL STAGES. SCHEMATIC DESIGN ONLY. ALL DIMENSIONS TO BE CONFIRMED ON SITE. NEW YORK, NEW YORK

4/7/2026

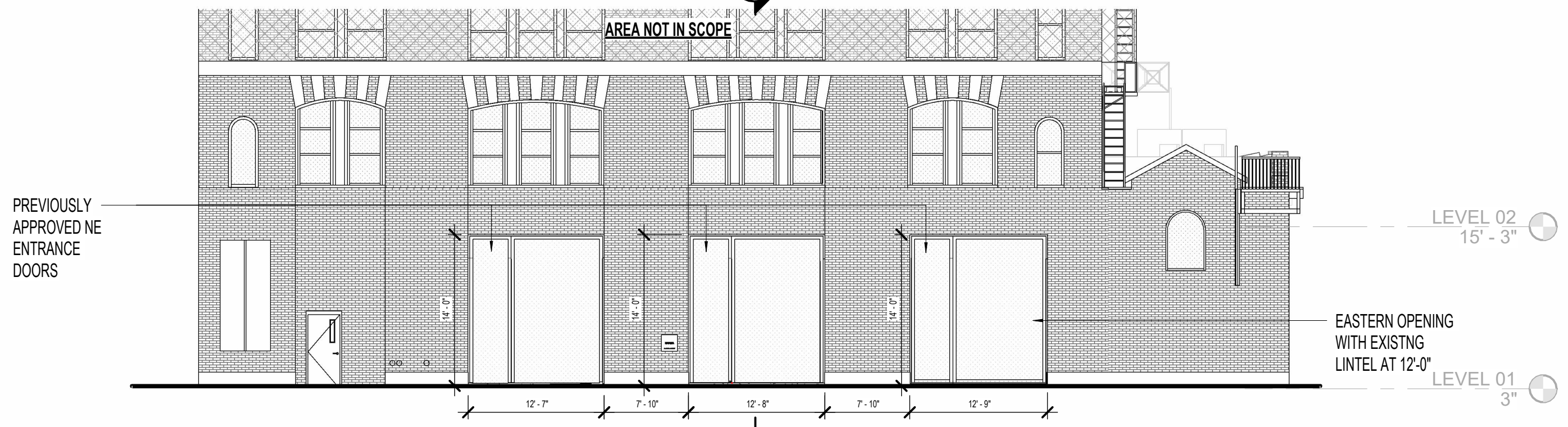
EXISTING AND PROPOSED SOUTH ELEVATION

T004.00A

studioMDA

SCALE: 1" = 10'-0" PROJECT NO: 881

3
T005.00



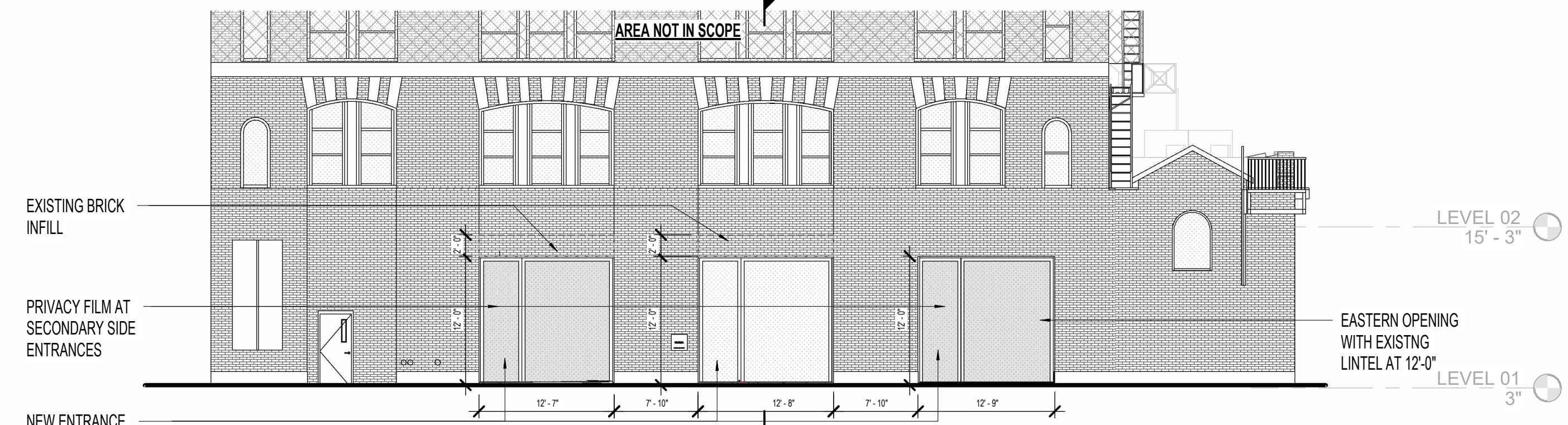
PREVIOUSLY APPROVED NE ENTRANCE DOORS

EASTERN OPENING WITH EXISTING LINTEL AT 12'-0"

PREVIOUSLY APPROVED SOUTH ELEVATION

SCALE: 1" = 10'-0"

1
T005.00



EXISTING BRICK INFILL

PRIVACY FILM AT SECONDARY SIDE ENTRANCES

NEW ENTRANCE DOORS

EASTERN OPENING WITH EXISTING LINTEL AT 12'-0"

EXISTING NEW SOUTH ELEVATION

SCALE: 1" = 10'-0"

EXISTING SOUTH ELEVATION

KARMA GALLERY
FOR
KARMA GALLERY

REPRESENTATIVE OF DESIGN INTENT ONLY. IT IS NOT A PHOTOREALISTIC REPRESENTATION OF ACTUAL MATERIALS PROPOSED AND AS SUCH SHOULD BE CONSIDERED PRELIMINARY AT ALL STAGES. SCHEMATIC DESIGN ONLY, ALL DIMENSIONS TO BE CONFIRMED ON SITE. NEW YORK, NEW YORK

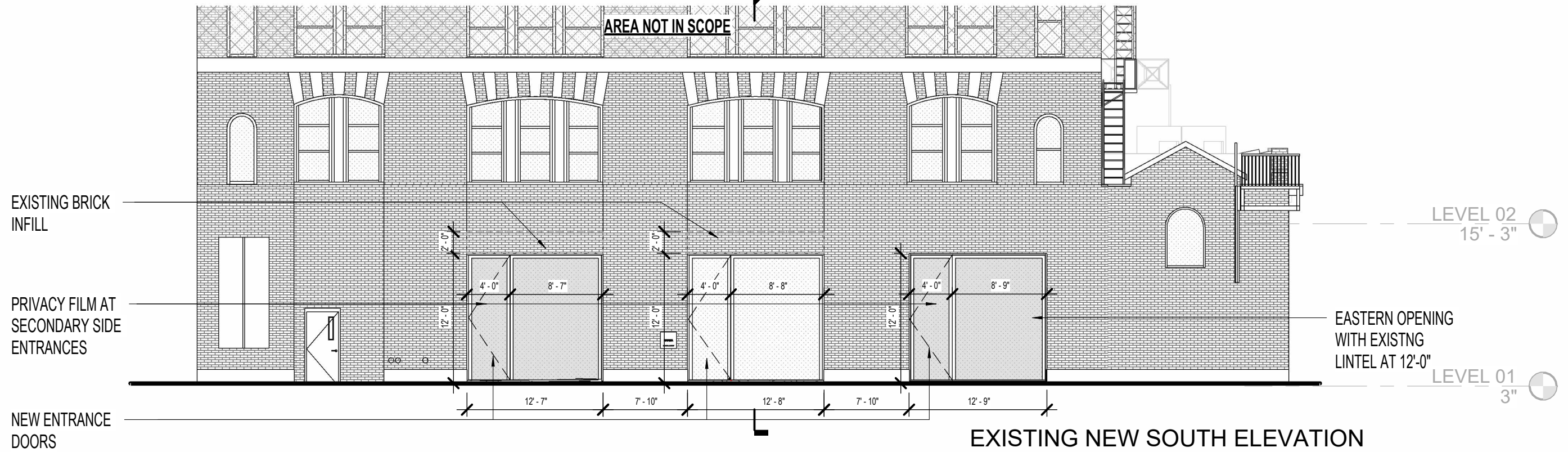
4/7/2026

T004.00B

studioMDA

SCALE: 1" = 10'-0" PROJECT NO: 881

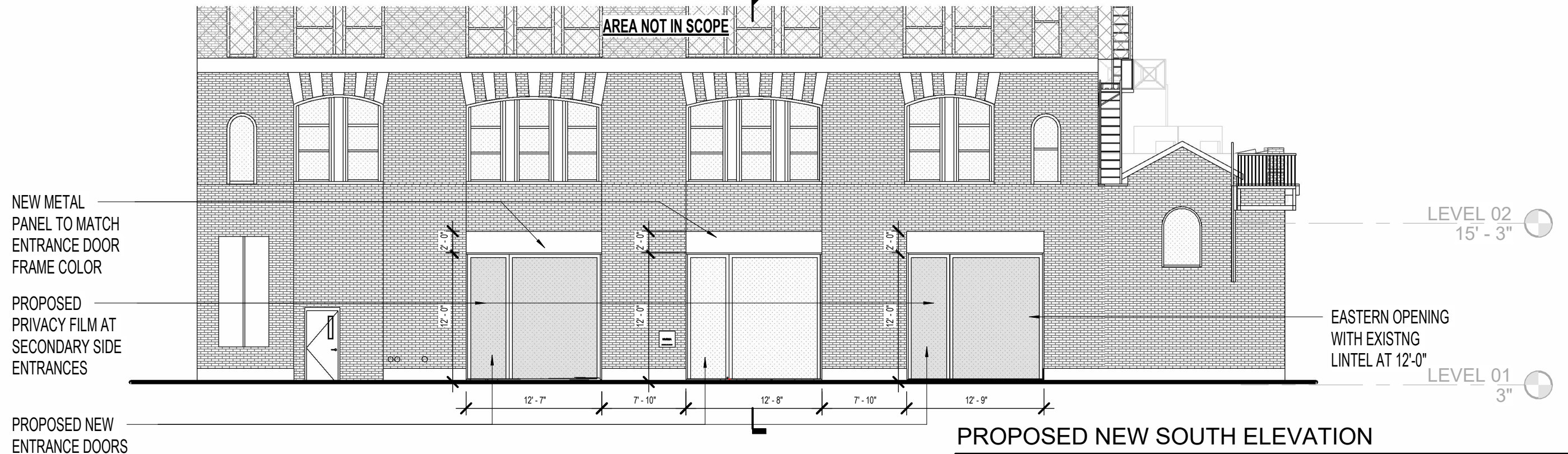
1
T005.00



EXISTING NEW SOUTH ELEVATION

SCALE: 1" = 10'-0"

1
T005.00



PROPOSED NEW SOUTH ELEVATION

SCALE: 1" = 10'-0"

PROPOSED SOUTH ELEVATION

KARMA GALLERY
FOR
KARMA GALLERY

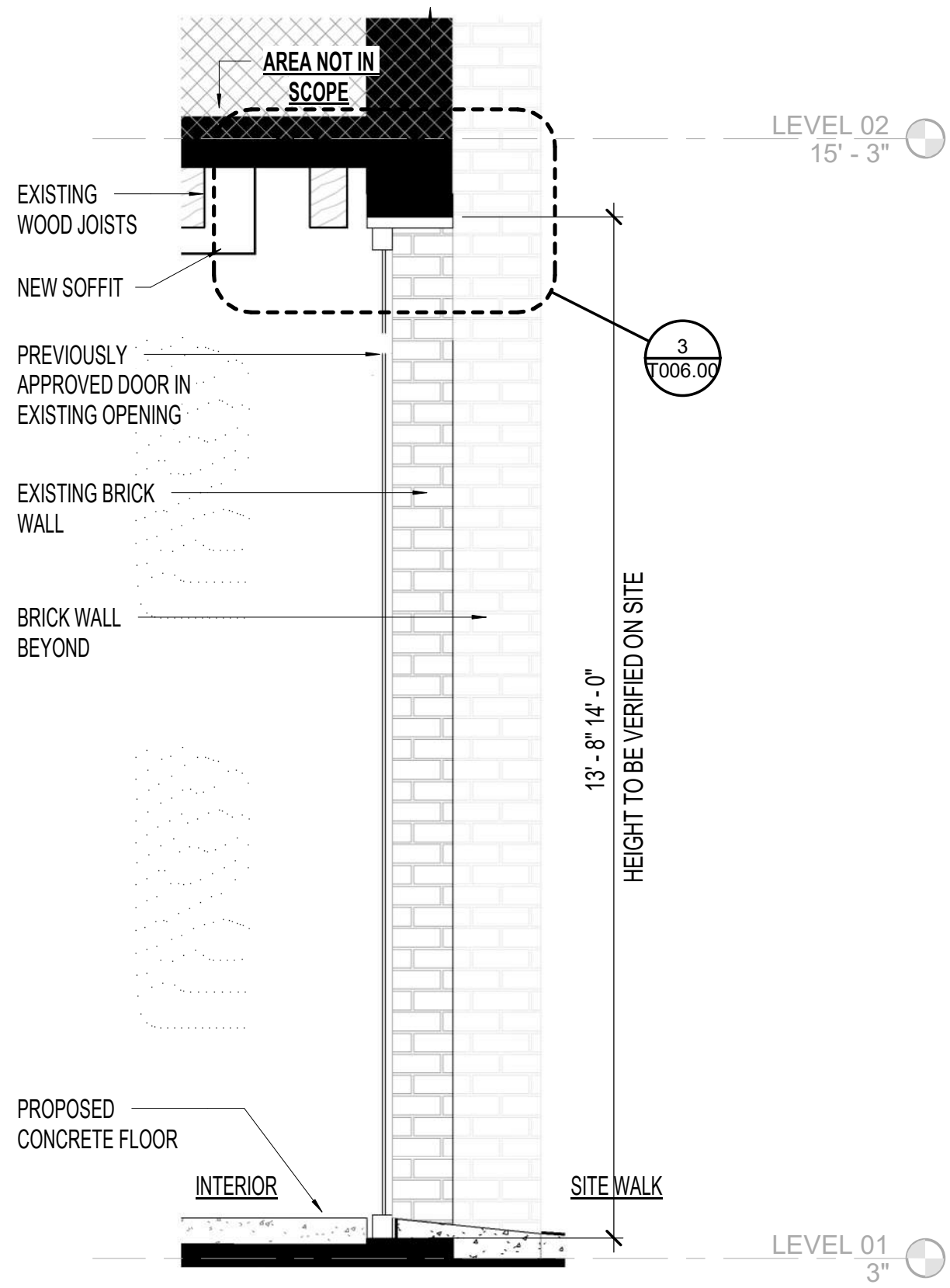
REPRESENTATIVE OF DESIGN INTENT ONLY. IT IS NOT A PHOTOREALISTIC REPRESENTATION OF ACTUAL MATERIALS PROPOSED AND AS SUCH SHOULD BE CONSIDERED PRELIMINARY AT ALL STAGES. SCHEMATIC DESIGN ONLY, ALL DIMENSIONS TO BE CONFIRMED ON SITE. NEW YORK, NEW YORK

4/7/2026

T004.00C

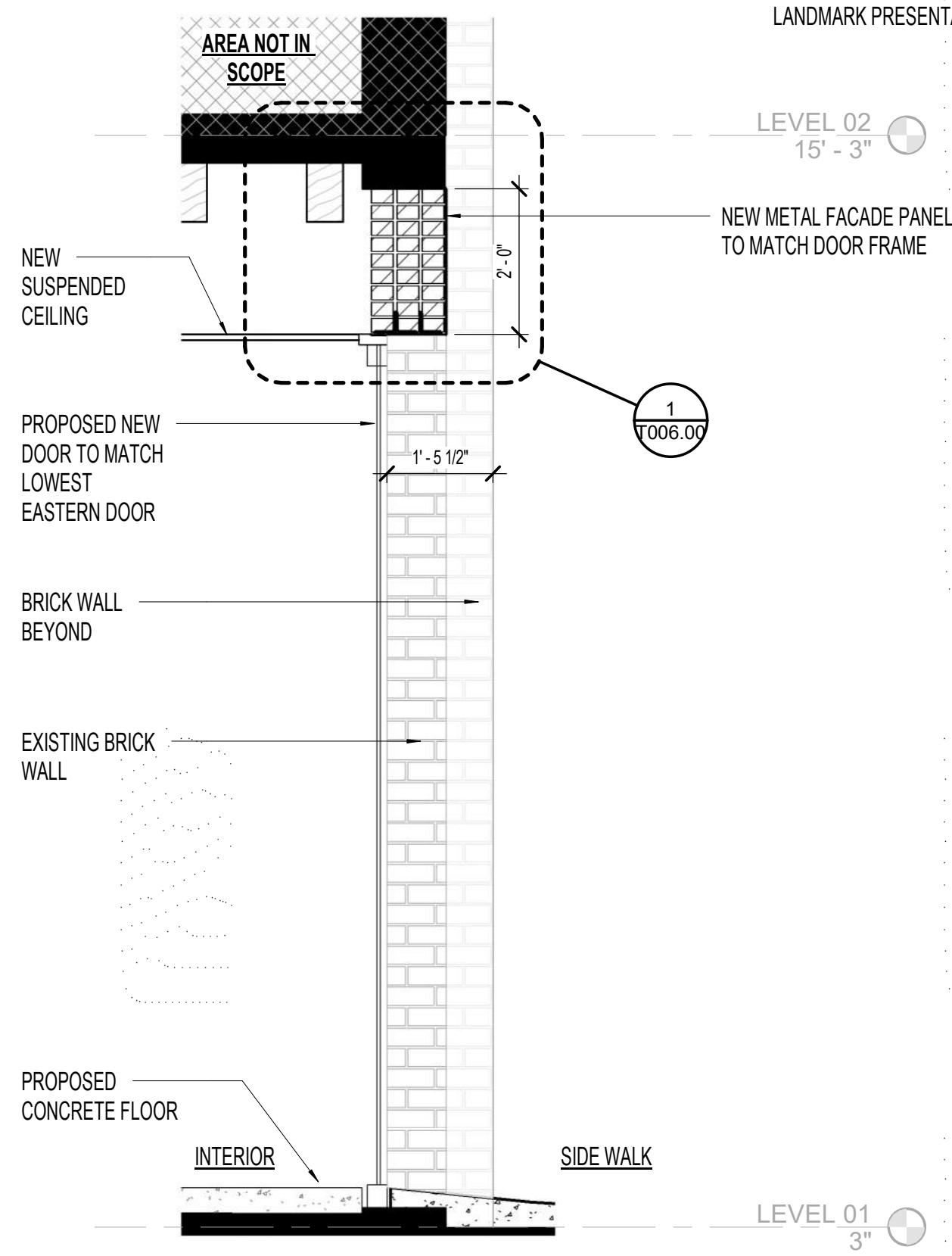
studioMDA

SCALE: 1" = 10'-0" PROJECT NO: 881



PREVIOUSLY APPROVED WALL SECTION

SCALE: 1/2" = 1'-0"



PROPOSED NEW WALL SECTION

SCALE: 1/2" = 1'-0"

LANDMARK PRESENTATION

KARMA GALLERY
FOR
KARMA GALLERY

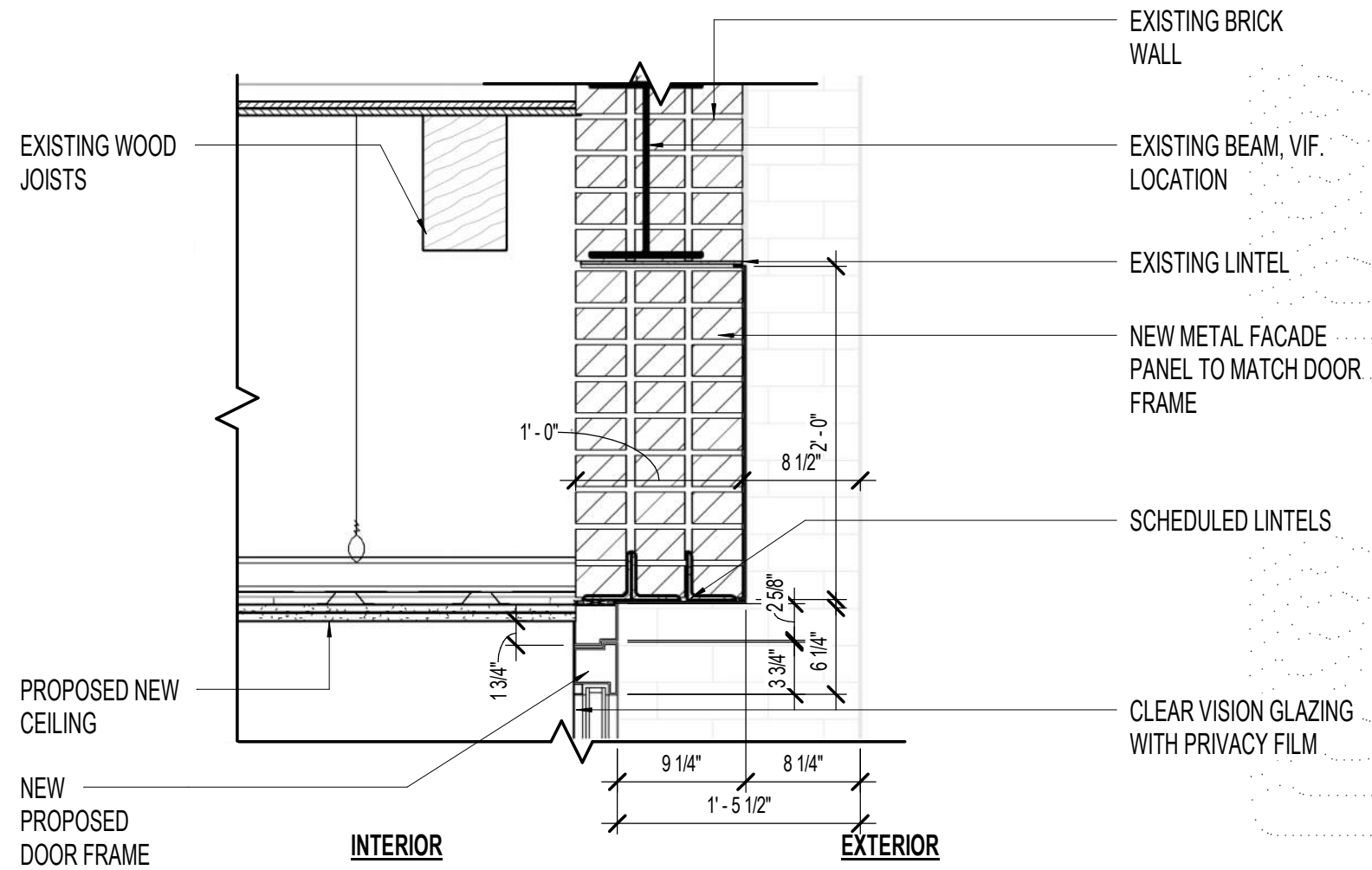
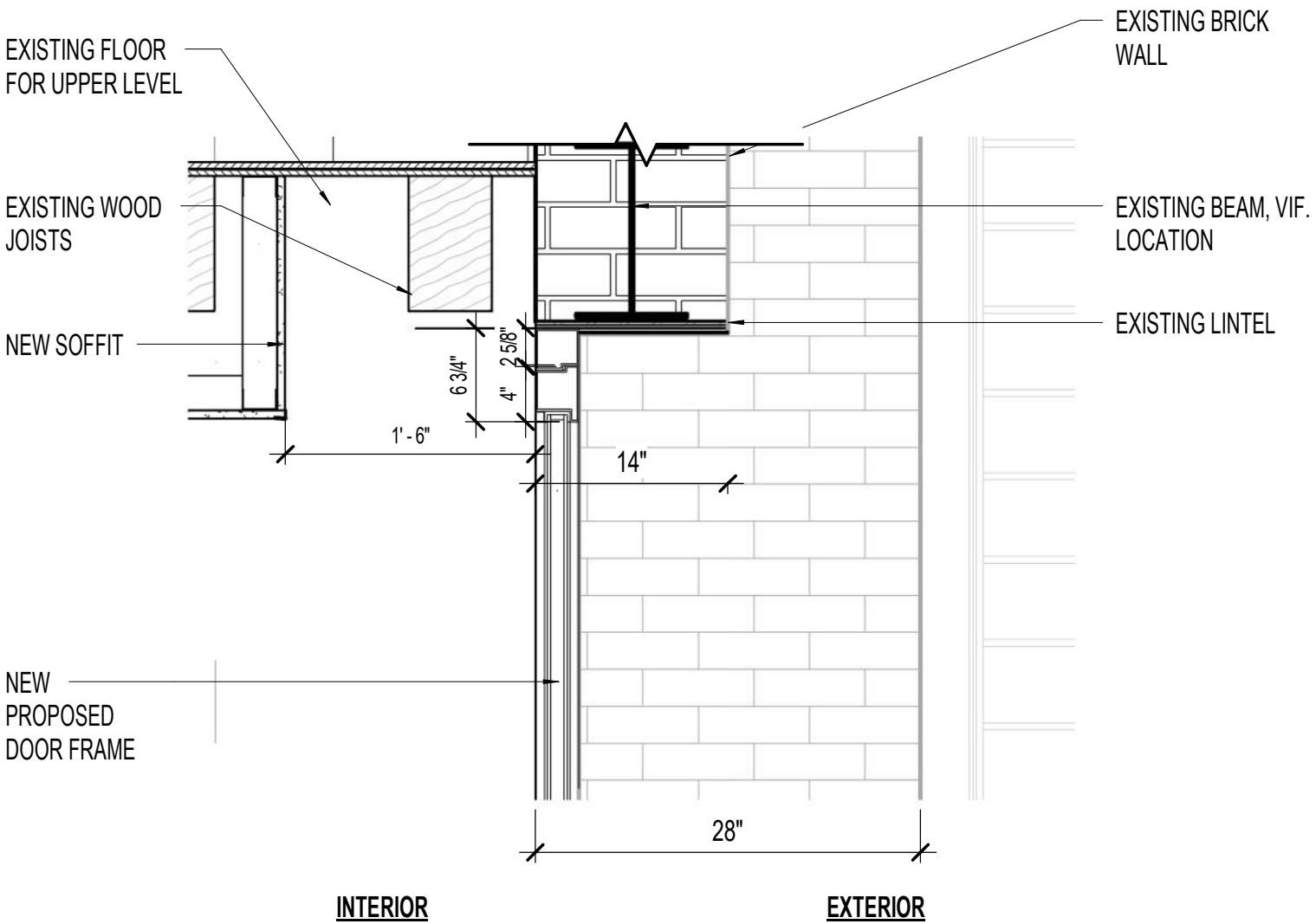
REPRESENTATIVE OF DESIGN INTENT ONLY. IT IS NOT A PHOTOREALISTIC REPRESENTATION OF ACTUAL MATERIALS PROPOSED AND AS SUCH SHOULD BE CONSIDERED PRELIMINARY AT ALL STAGES. SCHEMATIC DESIGN ONLY. ALL DIMENSIONS TO BE CONFIRMED ON SITE. NEW YORK, NEW YORK

4/7/2026

ENLARGED SOUTH ELEVATIONS

T005.00 studioMDA

SCALE: 1/2" = 1'-0" PROJECT NO: 881



3 PREVIOUSLY APPROVED HEAD DETAIL @ SOUTH FACADE
SCALE: 1" = 1'-0"

1 PROPOSED NEW HEAD DETAIL @ SOUTH FACADE
SCALE: 1" = 1'-0"



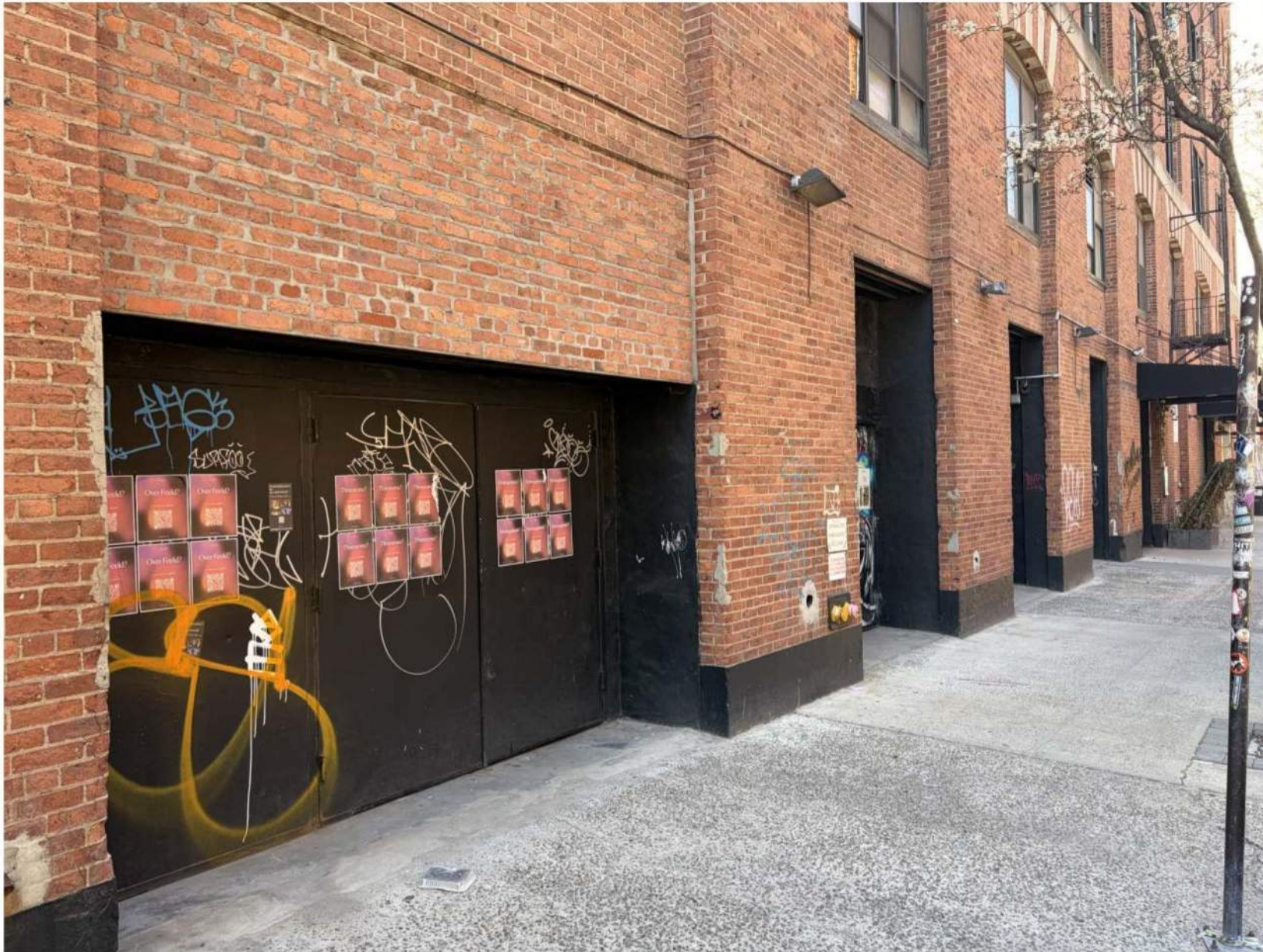
CURRENT WESTERN DOOR AT SOUTH FACADE



CURRENT CENTER DOOR AT SOUTH FACADE



CURRENT EASTERN DOOR AT SOUTH FACADE



EXISTING MODIFIED DOORS WITH INFILL BRICK AT GARAGE DOOR

LOCATION: 542 WEST 27TH STREET

KARMA GALLERY
FOR
KARMA GALLERY

SCHEMATIC DESIGN ONLY, ALL DIMENSIONS TO BE CONFIRMED ON SITE
NEW YORK, NEW YORK



LLumar® iLLusions™ Decorative Window Film
Frost Series
Frost (NRM PS2)



SPECIFICATION SHEET



To view this product and the rest of the LLumar® iLLusions™ line, please visit LLumar.com/decofilmviewer

Product Description

Create private spaces that feel open and airy with frost series decorative window films. Frosted and translucent finishes ensure privacy without sacrificing natural light. They are ideal for commercial interior glazing applications such as office partitions or to meet interior design goals at a fraction of the cost of etched glass.

Benefits and selection criteria

- The most popular film in the series provides modest privacy
- Softly diffuses light
- Can be custom cut for a decorative or patterned appearance
- Helps shield harmful ultraviolet rays

Specifications

Product Name	Frost (NRM PS2)
Product Series	Frost Series
Film Type	Polyester
Adhesive Type	Pressure-sensitive
Usage	Interior
Widths	72", 60", 48", 36"
Film Thickness (excludes liner)	.002"

Installation and Warranty

LLumar iLLusions are professionally installed by a global network of authorized dealers in accordance with factory procedures. While installation is fast, with minimal disruption to tenants or contractors, the film is extremely durable and is backed by a limited manufacturer's warranty. Your dealer can provide you with technical information and warranty details.

Contact Information

Call 1-800-851-7781 or visit solutions.llumar.com/commercial to learn more.

Performance Data

	% Visible Light Transmittance	% Diffuse Visible Light Reflectance (exterior)	Privacy Film Rating
Clear Glass 1/8" (3mm) single pane	90	8	0
Frost (NRM PS2) 1/8" (3mm) single pane	73	25	7

For the most current data please go to LLumar.com/nor-deco-specs

EASTMAN LLumar.com
© 2014 Eastman Chemical Company. LLumar® and the LLumar® logo are trademarks of Eastman Chemical Company or one of its wholly owned subsidiaries. As used herein, ® denotes registered trademark status in the U.S. only. Printed in U.S.A. (11/14)



PROPOSED PRIVACY FILM INFORMATION

The product spec for the privacy film is LLumar Frost NRM PS2. The explanation for the film on the two storefronts is because they are secondary entrances/exits. They were filmed to avoid confusion over the main entrance location and to prevent unnecessary pulling on doors given their size and secondary use.

T008.00

studioMDA

April 21, 2026
Public Hearing

The current proposal is:

Preservation Department – Item 5, LPC-26-09781

549 West 26th Street – West Chelsea Historic District
Borough of Manhattan

To testify virtually, please join Zoom

Webinar ID: 160 200 9644

Passcode: 979898

By Phone: 646-828-7666 (NY)

833-435-1820 (Toll-free)

833-568-8864 (Toll-free)

Note: If you want to testify virtually on an item, join the Zoom webinar at the agenda's "Be Here by" time (about an hour in advance). When the Chair indicates it's time to testify, "raise your hand" via the Zoom app if you want to speak (*9 on the phone). Those who signed up in advance will be called first.