

The current proposal is:

Preservation Department – Item 1, LPC-25-10880

**40 Hampton Place – Crown Heights North Historic District
Borough of Brooklyn**

Note: this is a Public Meeting item. No public testimony will be received today as the hearing on this item is closed.



1940 VIEW OF 40 HAMPTON PLACE

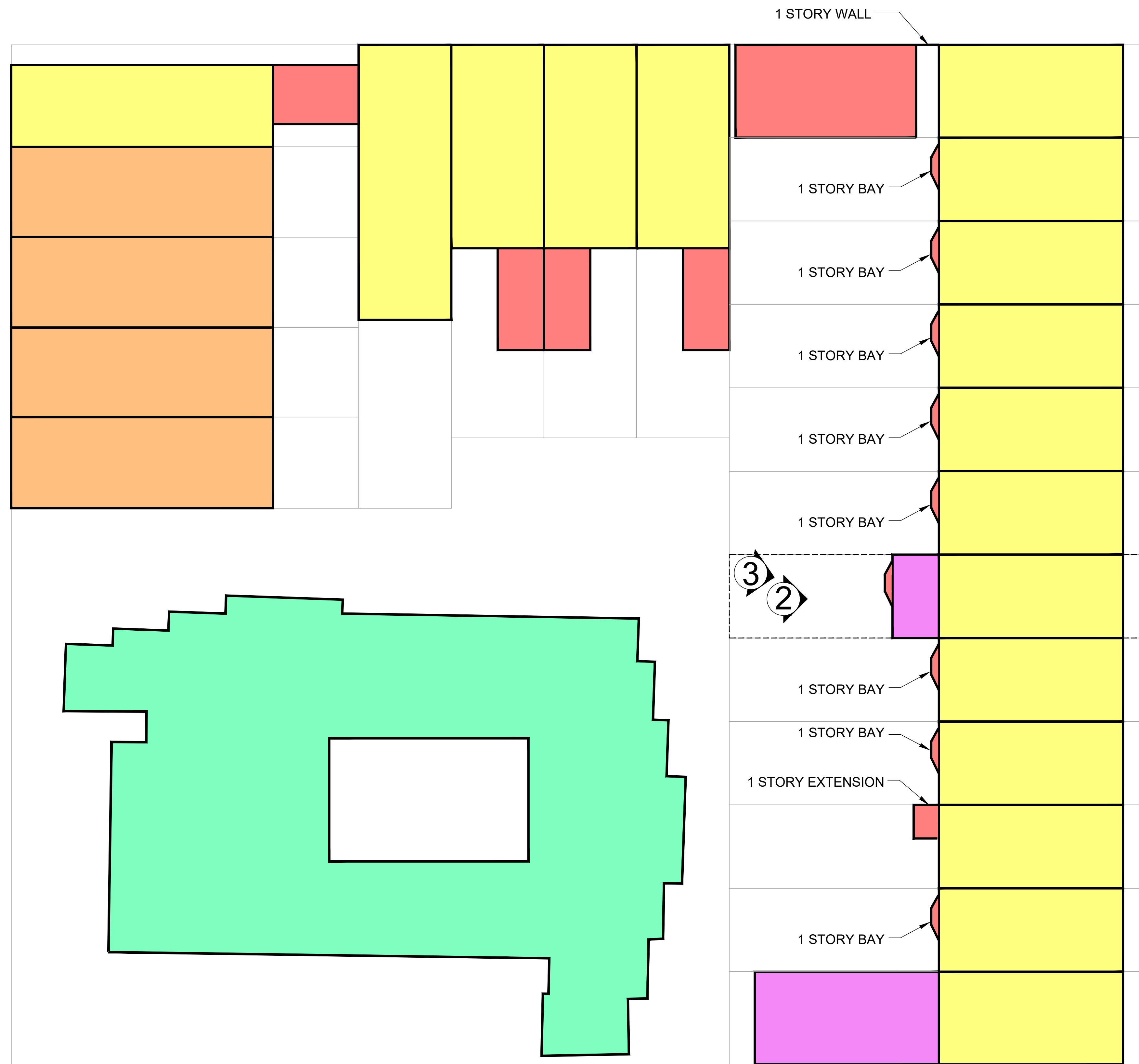


1980 VIEW OF 40 HAMPTON PLACE



2024 VIEW OF 40 HAMPTON PLACE

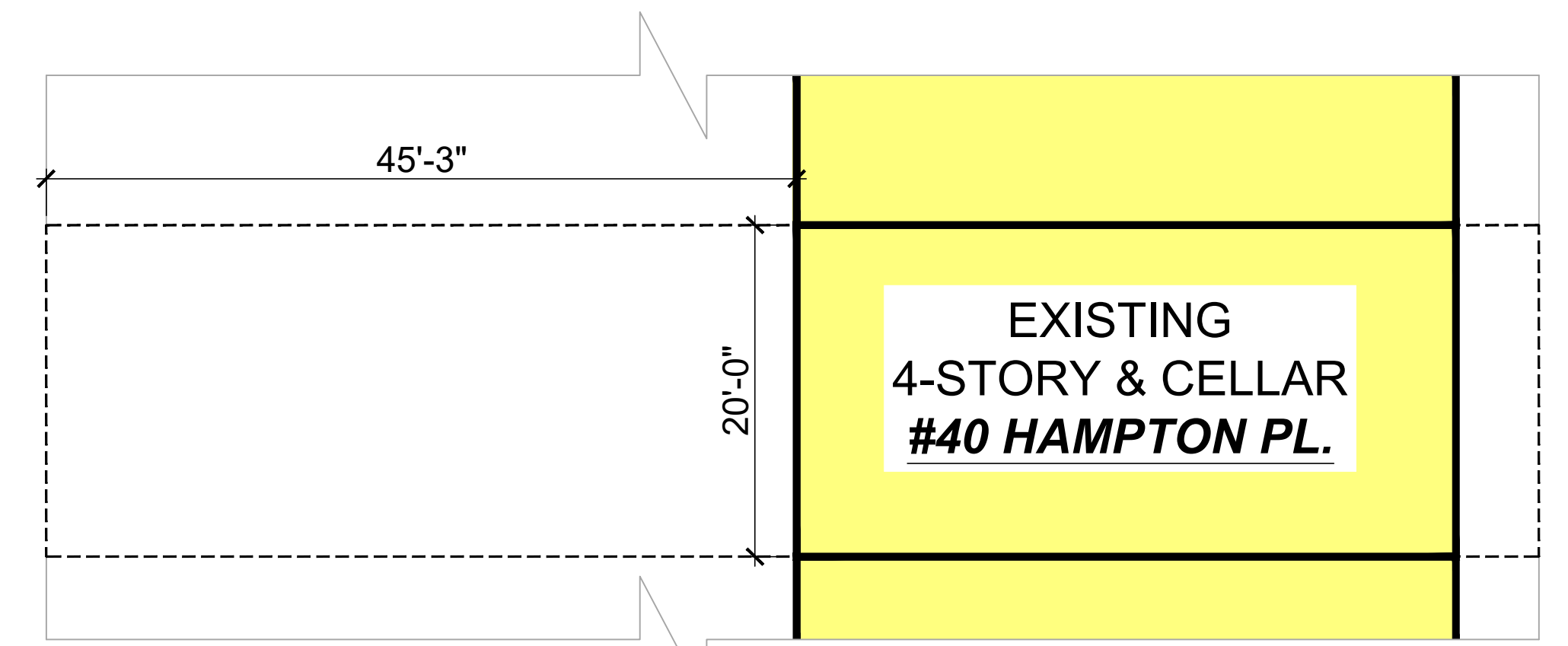
S T E R L I N G P L A C E



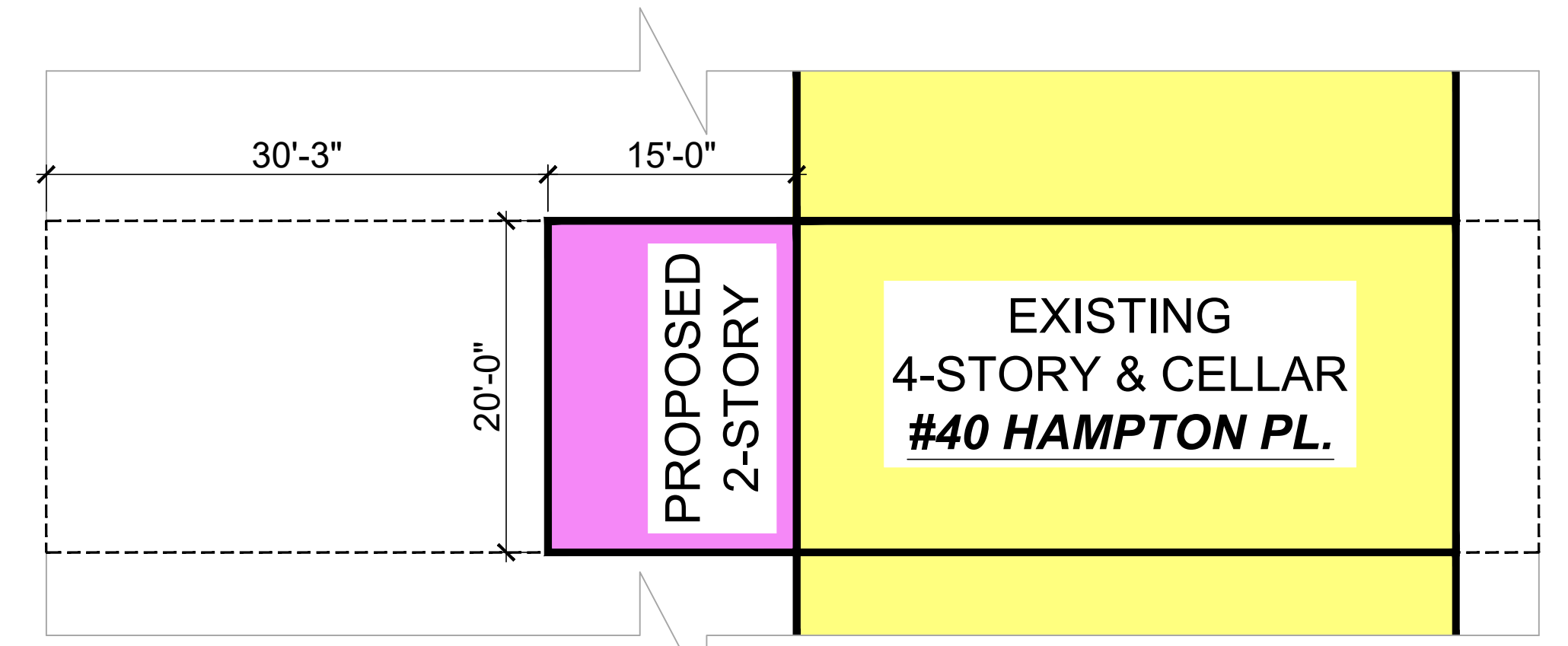
K I N G S T O N A V E N U E

H A M P T O N P L A C E

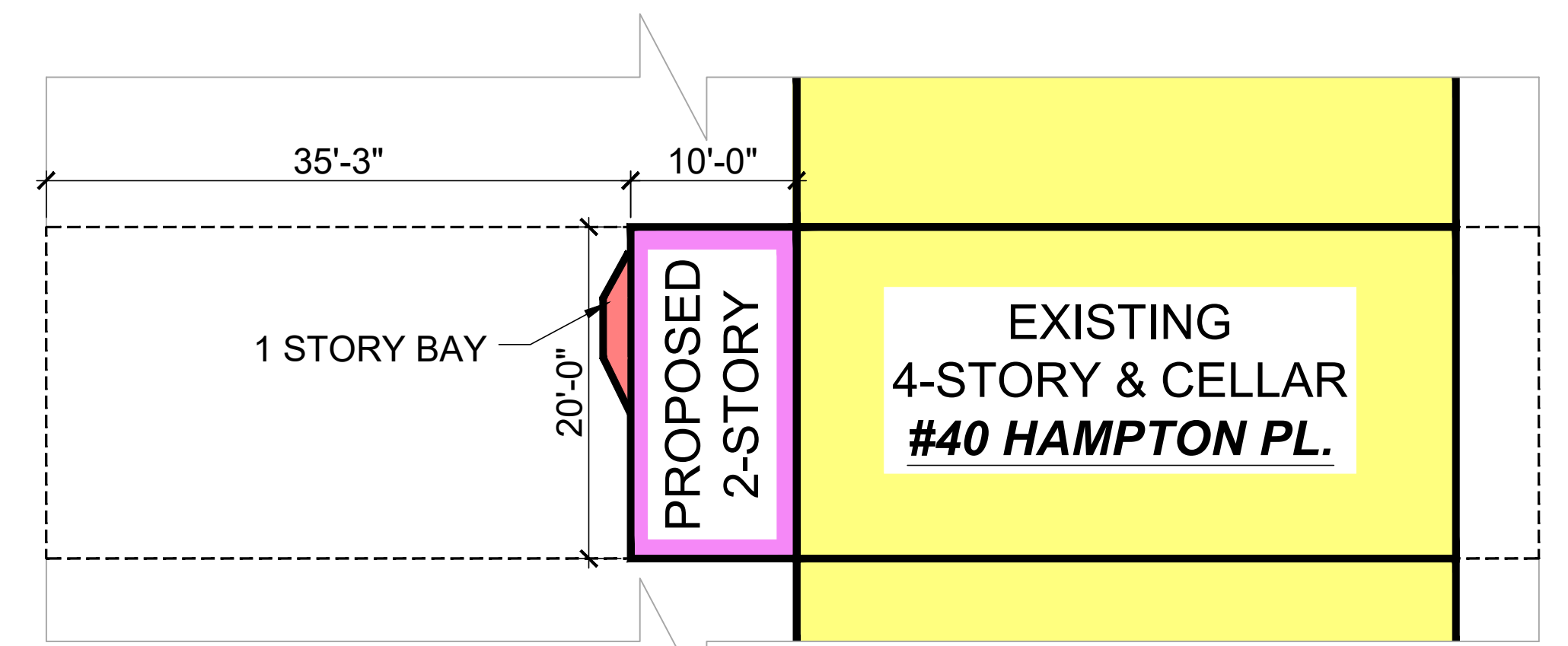
S T . J O H N S P L A C E



EXISTING



PREVIOUSLY PRESENTED AT LPC HEARING, 01-06-26



REVISED PLAN VIEW

- 1 STORY 2 STORY 3 STORY
- 4 STORY 5 STORY 6 STORY

DIRECTION / LOCATION OF SITE PHOTO

BLOCK PLAN

40 HAMPTON PLACE, Brooklyn NY 11213



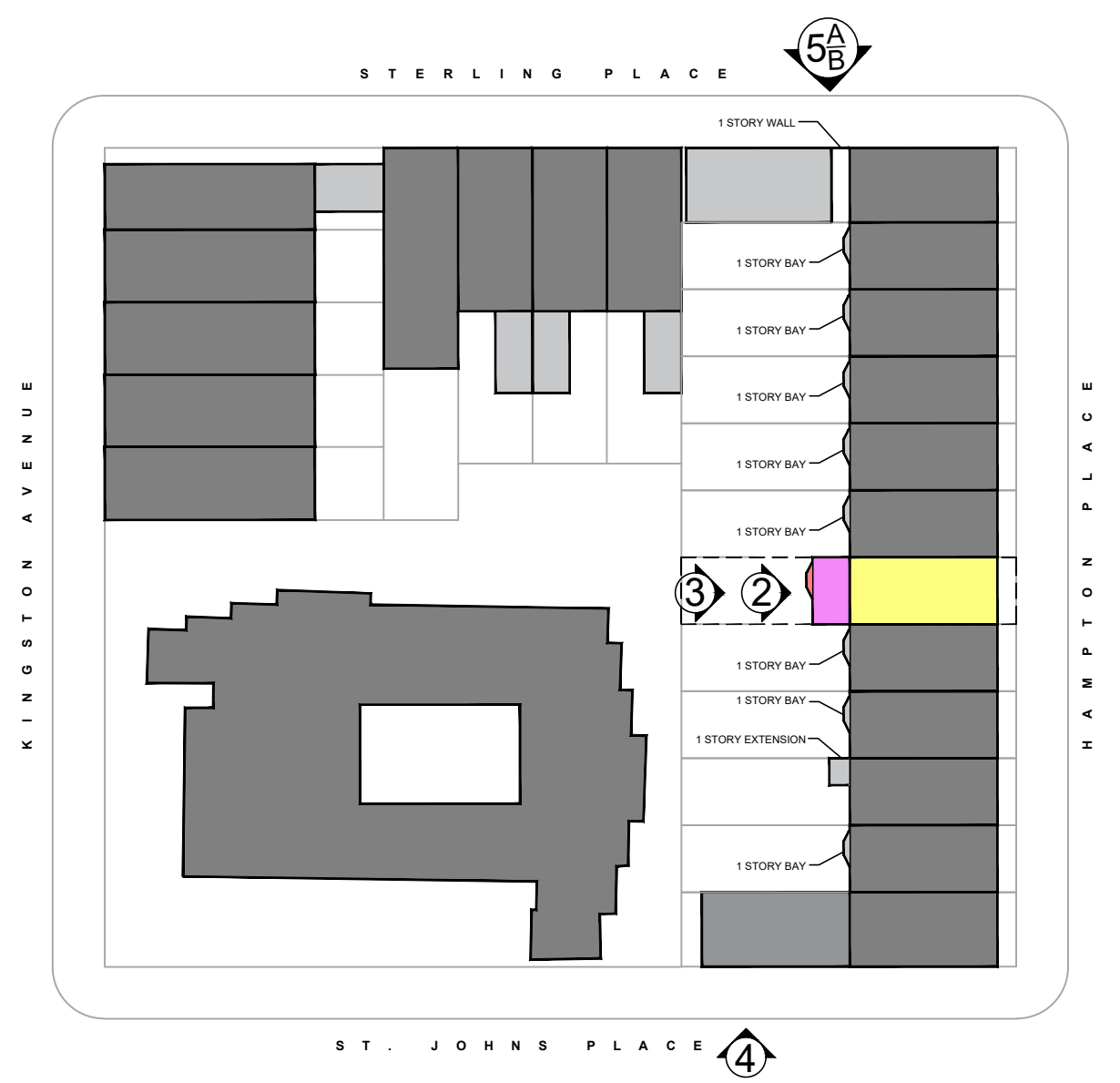
1 FRONT VIEW AT HAMPTON PLACE



2 REAR VIEW PRIOR TO DEMOLITION



3 REAR VIEW WITHIN REAR YARD



4 VISIBILITY VIEW FROM ST. JOHNS PLACE



5A VISIBILITY VIEW FROM STERLING PLACE



5B VISIBILITY VIEW FROM STERLING PLACE

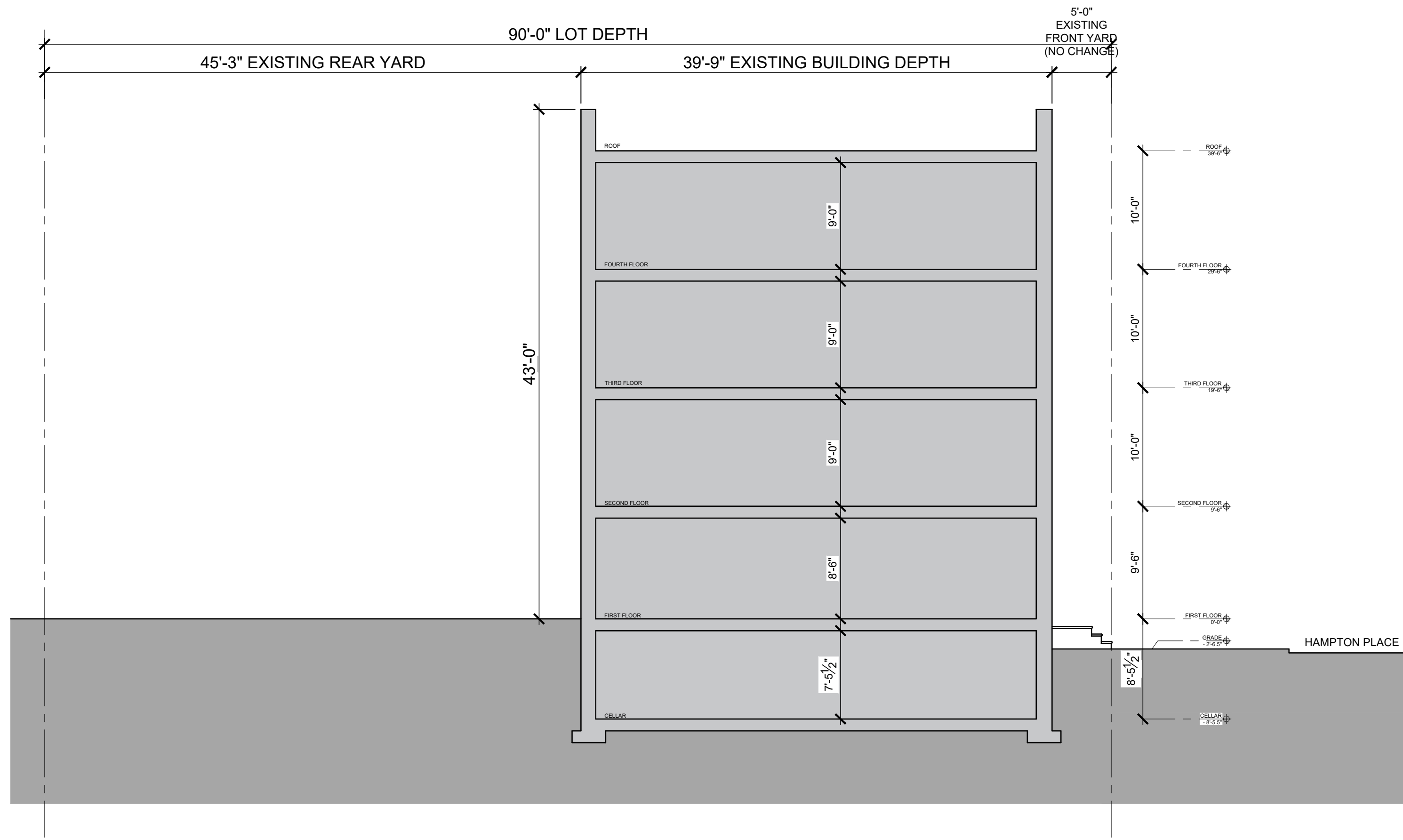
40 HAMPTON
2 STORY
EXTENSION
ONLY VISIBLE
FROM THIS
LOCATION

SEE PAGE 7
FOR RENDERED
PROPOSAL AT
THIS VIEW

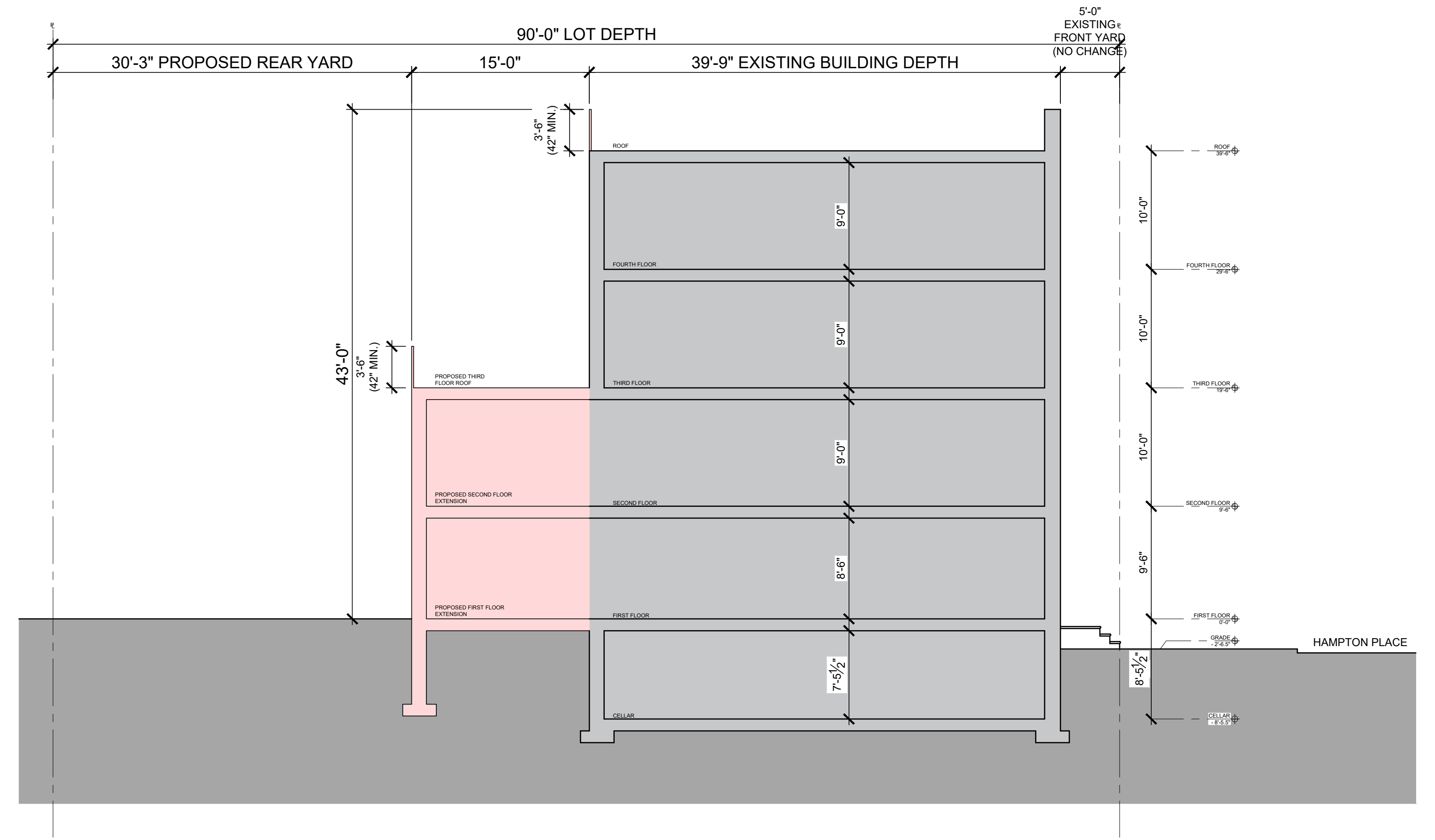
DIRECTION / LOCATION
OF SITE PHOTO 

SITE PHOTOS

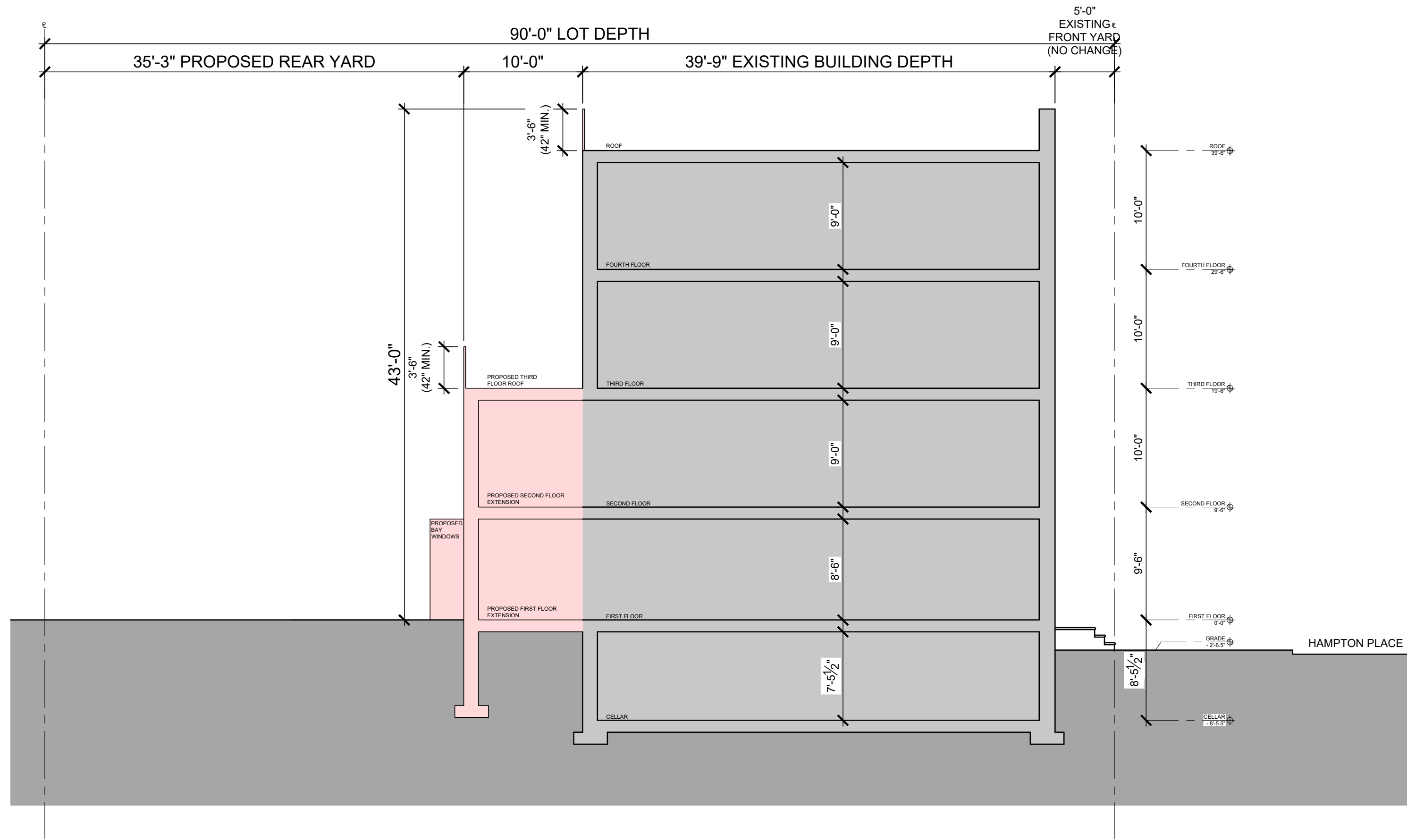
40 HAMPTON PLACE, Brooklyn NY 11213



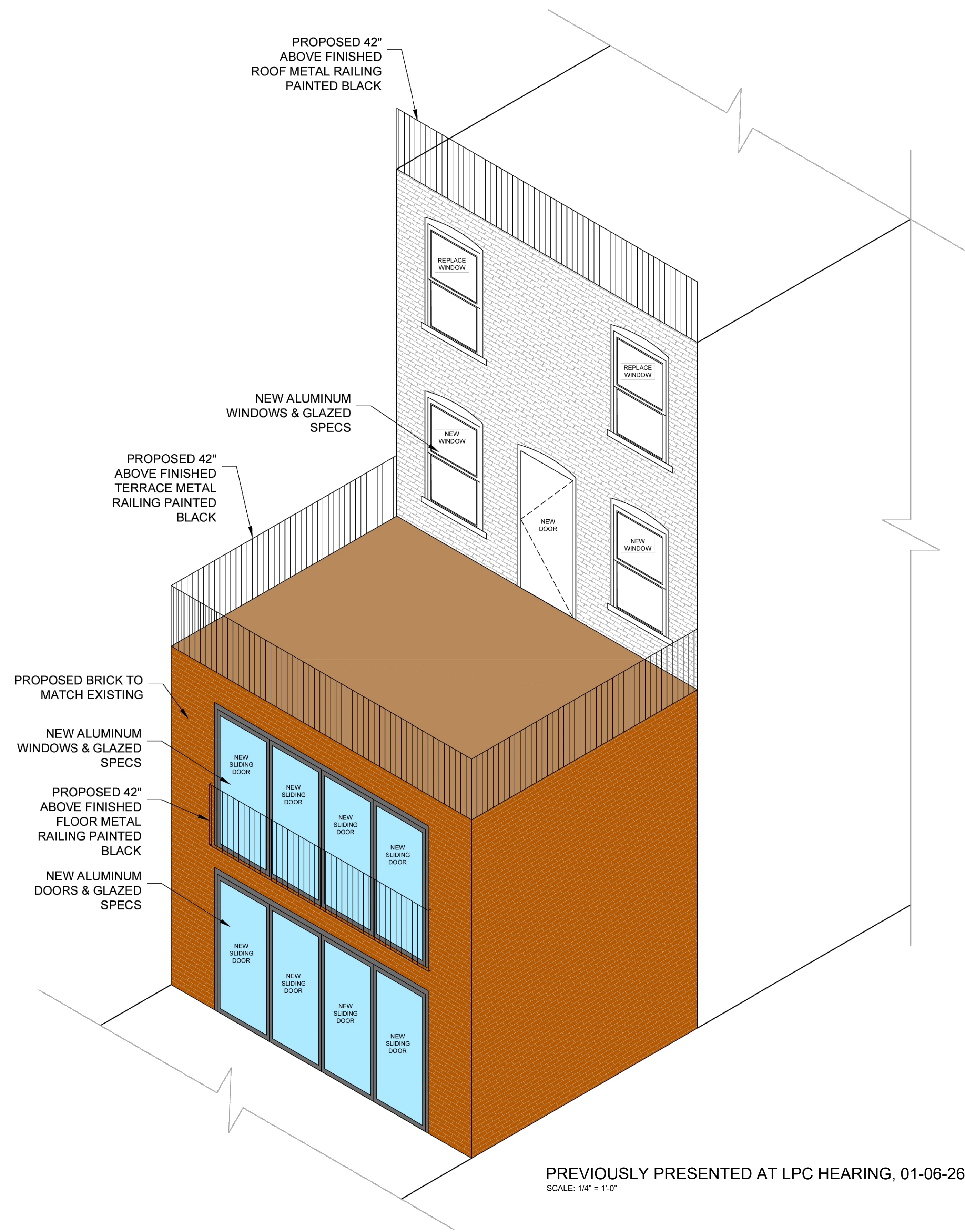
EXISTING LONGITUDINAL SECTION
SCALE: 1/8" = 1'-0"



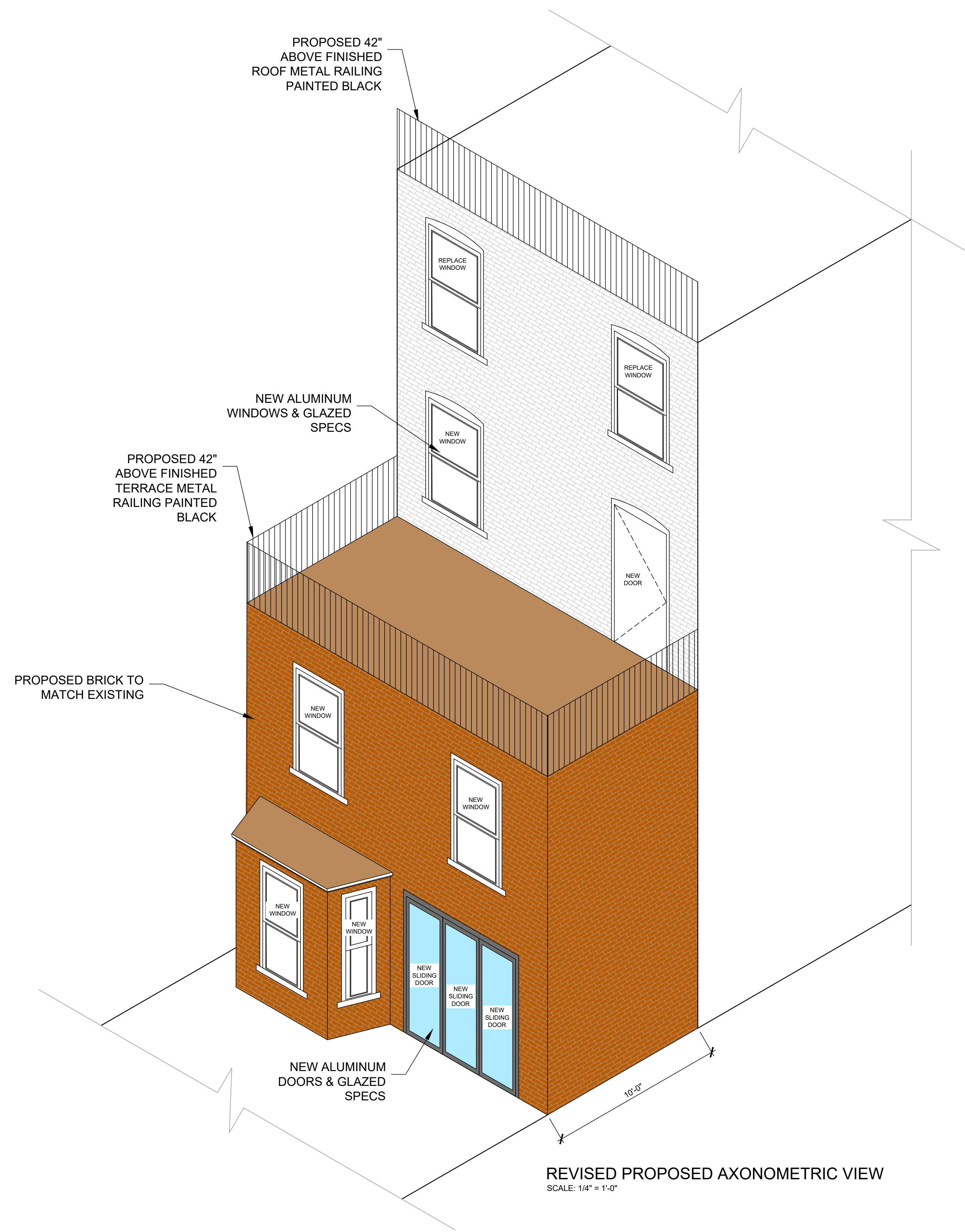
PREVIOUSLY PRESENTED AT LPC HEARING, 01-06-26
SCALE: 1/8" = 1'-0"



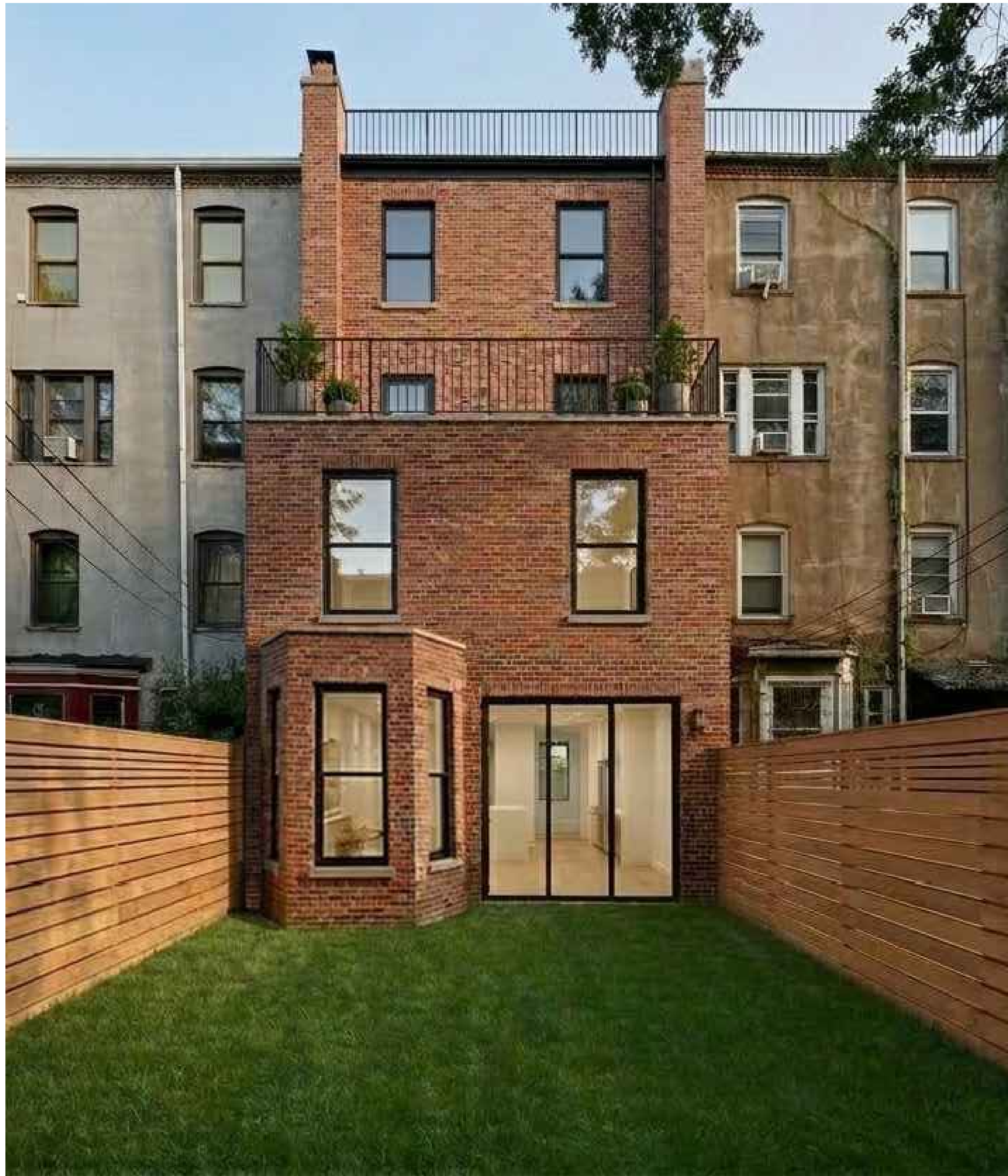
REVISED PROPOSED LONGITUDINAL SECTION
SCALE: 1/8" = 1'-0"



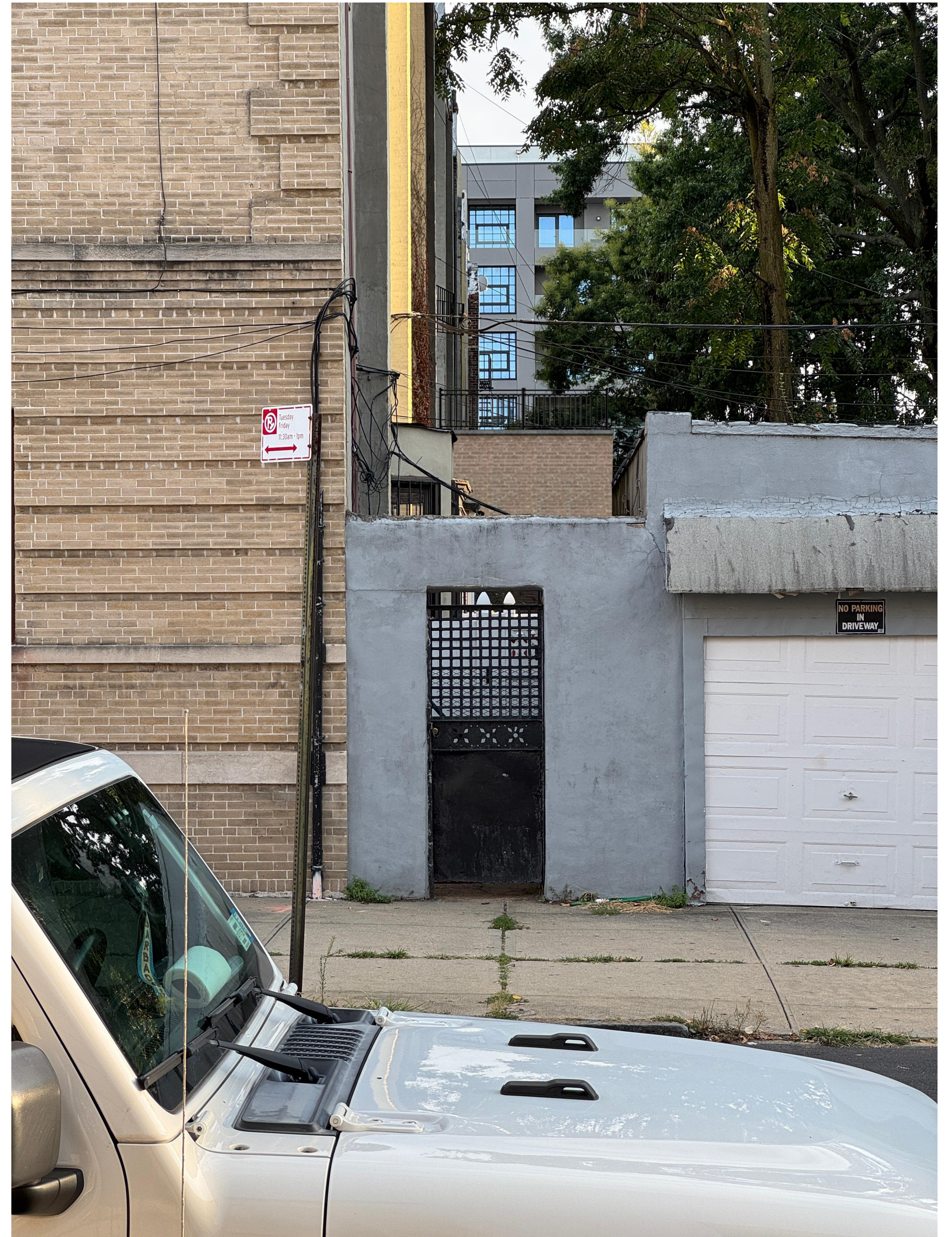
PREVIOUSLY PRESENTED AT LPC HEARING, 01-06-26
SCALE: 1/4" = 1'-0"



REVISED PROPOSED AXONOMETRIC VIEW
SCALE: 1/4" = 1'-0"



RENDERED VIEW FROM REAR YARD



RENDERED VIEW FROM STERLING PLACE



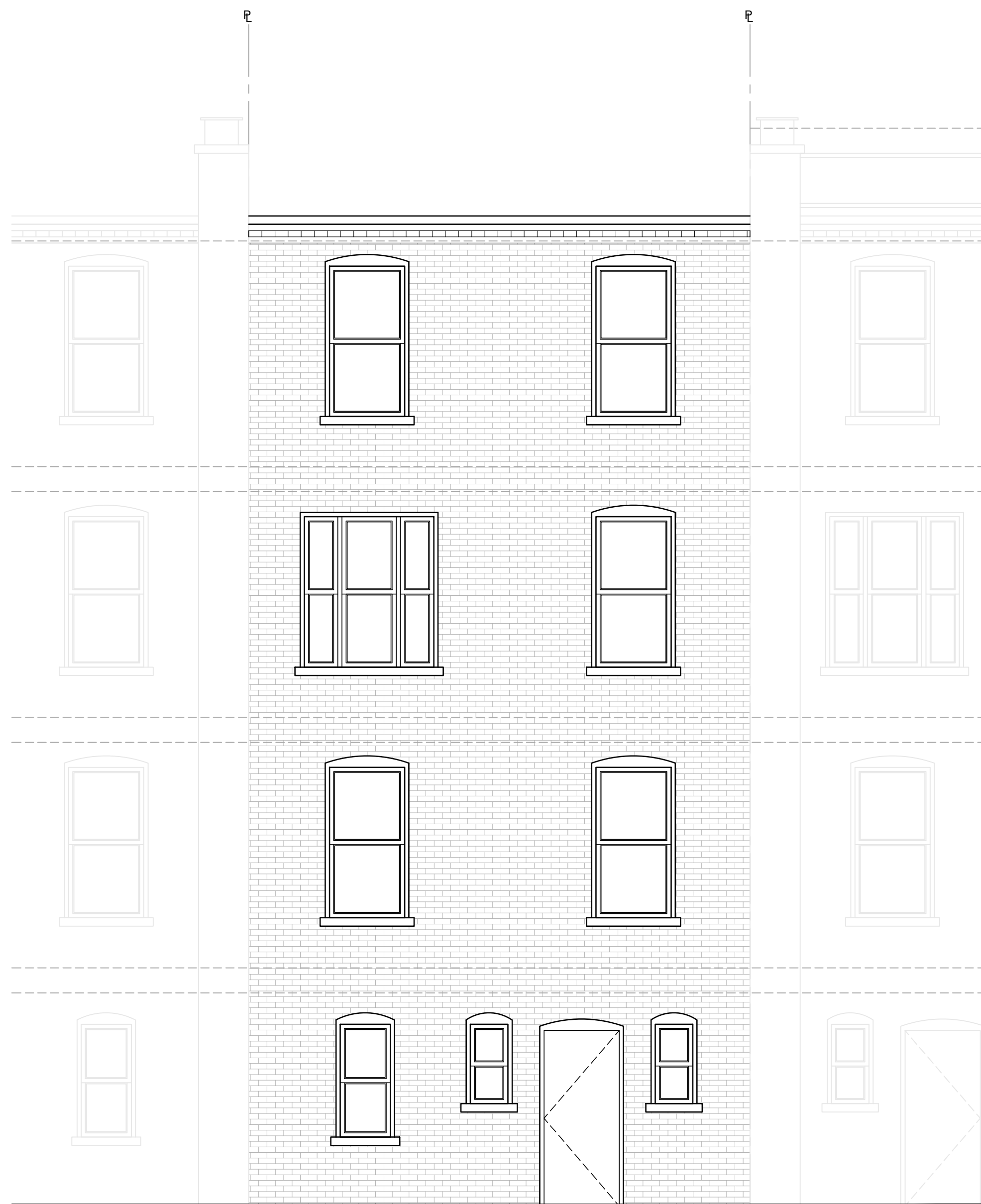
EXISTING REAR ELEVATION
SCALE: 1/4" = 1'-0"



PREVIOUSLY PRESENTED AT LPC HEARING, 01-06-26
SCALE: 1/4" = 1'-0"



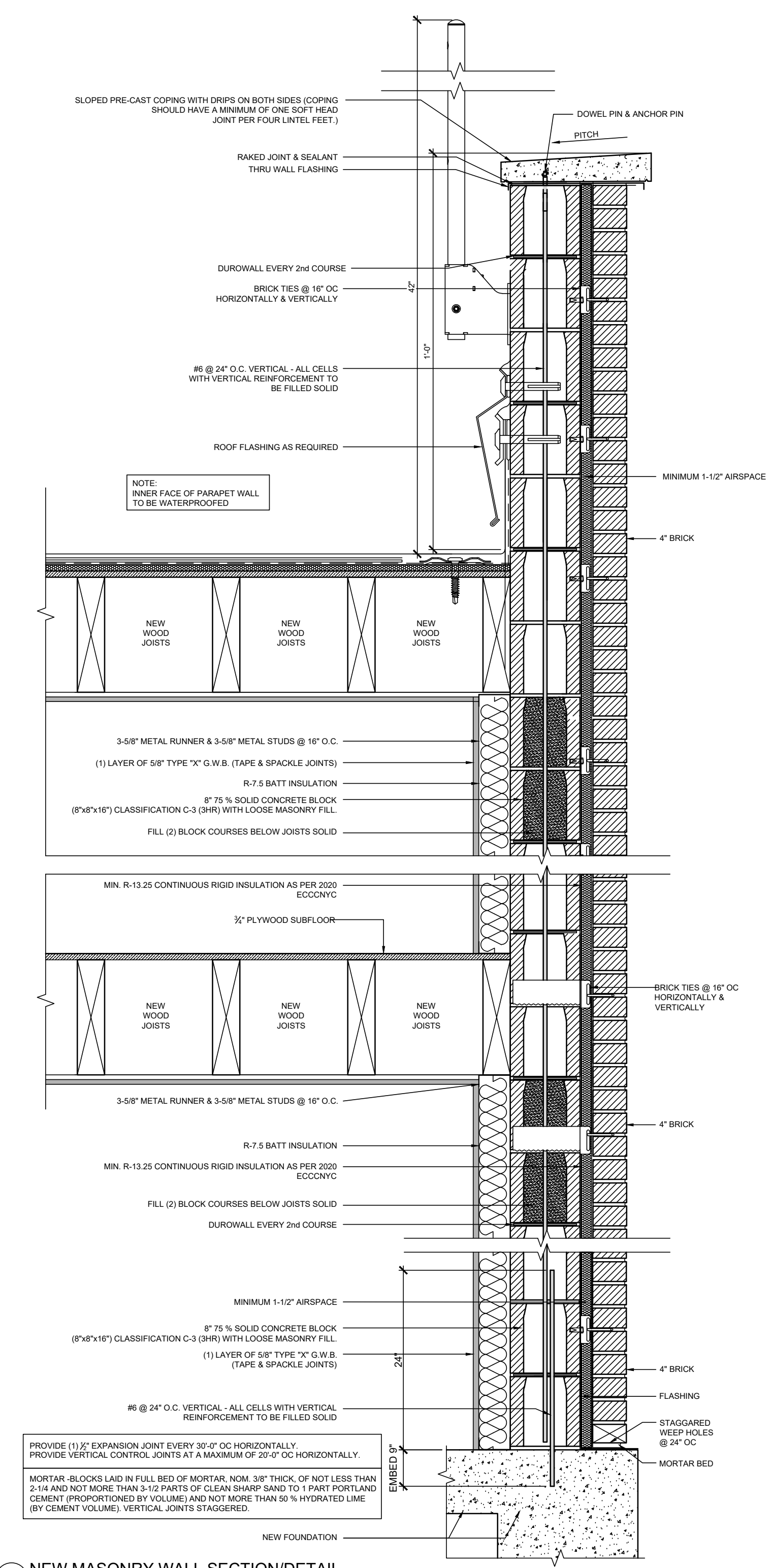
REVISED PROPOSED REAR ELEVATION
SCALE: 1/4" = 1'-0"



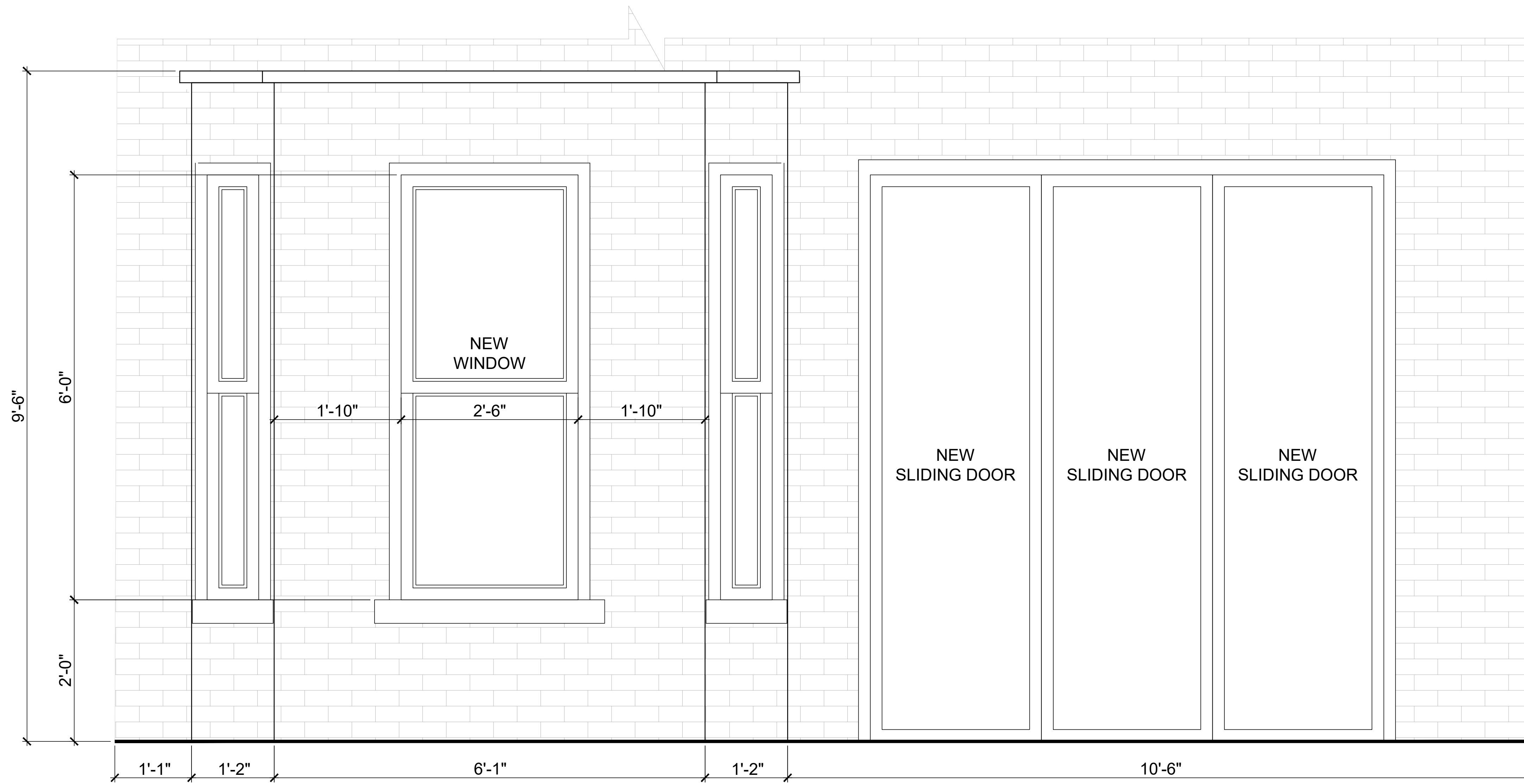
EXISTING REAR ELEVATION
SCALE: 1/4" = 1'-0"



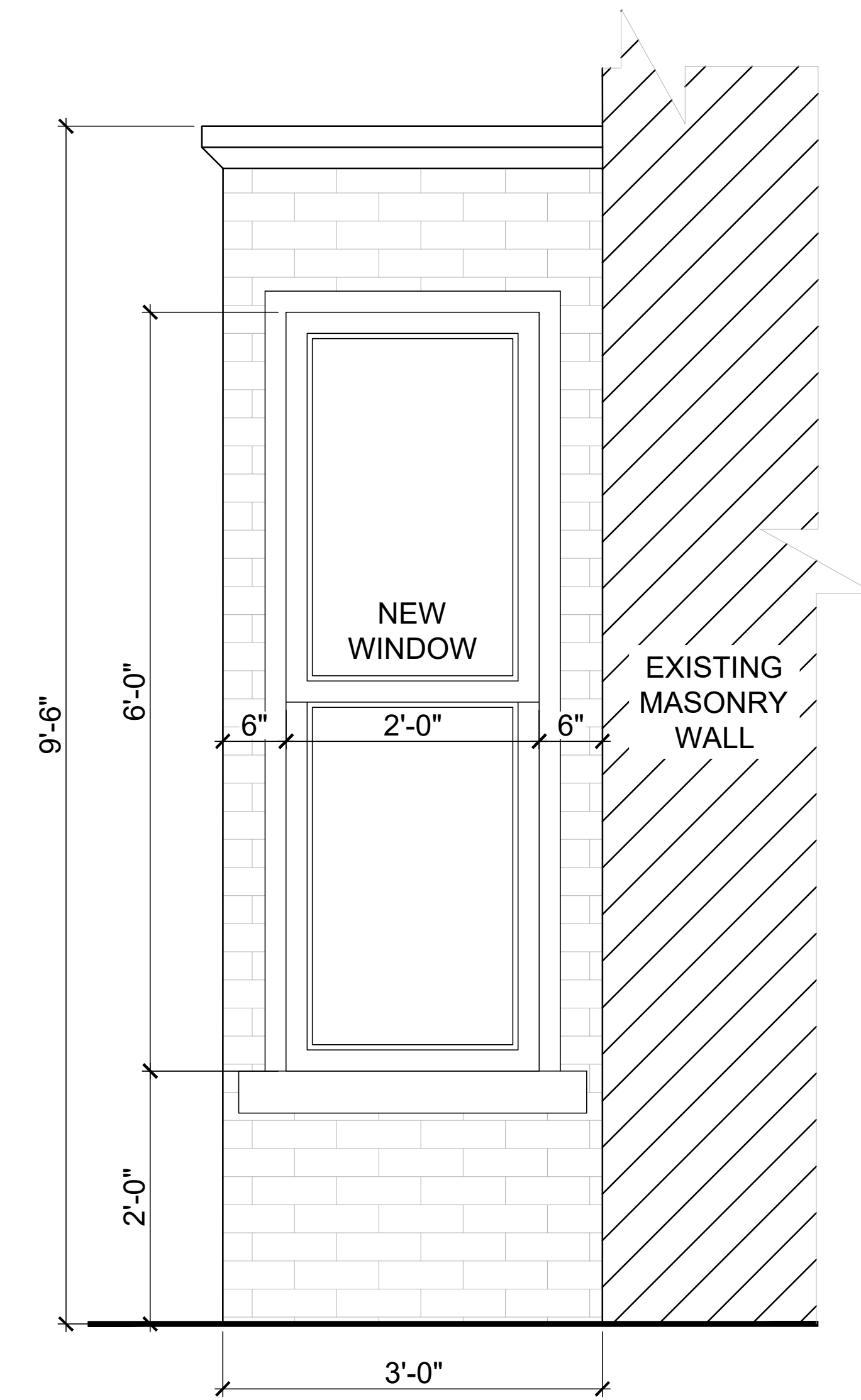
PROPOSED REAR ELEVATION
SCALE: 1/4" = 1'-0"



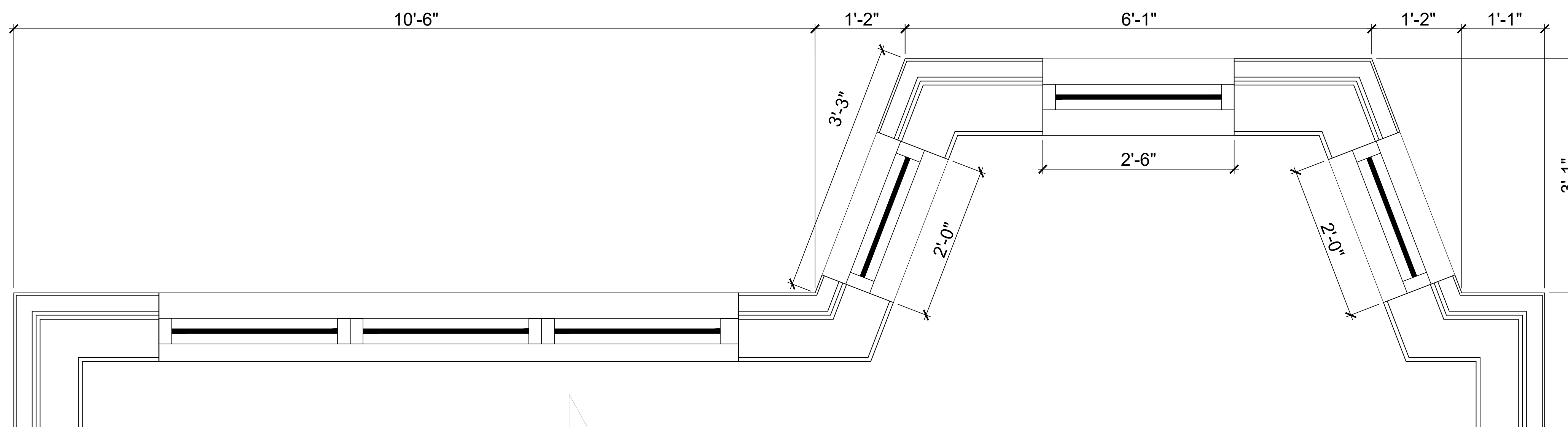
1 NEW MASONRY WALL SECTION/DETAIL
N.T.S.



PROPOSED PARTIAL REAR ELEVATION
SCALE: 1" = 1'-0"



PROPOSED PARTIAL SIDE ELEVATION
SCALE: 1" = 1'-0"



PROPOSED PARTIAL FIRST FLOOR PLAN
SCALE: 1" = 1'-0"

The current proposal is:

Preservation Department – Item 1, LPC-25-10880

**40 Hampton Place – Crown Heights North Historic District
Borough of Brooklyn**

Note: this is a Public Meeting item. No public testimony will be received today as the hearing on this item is closed.