

44 King Street - New York, NY 10014

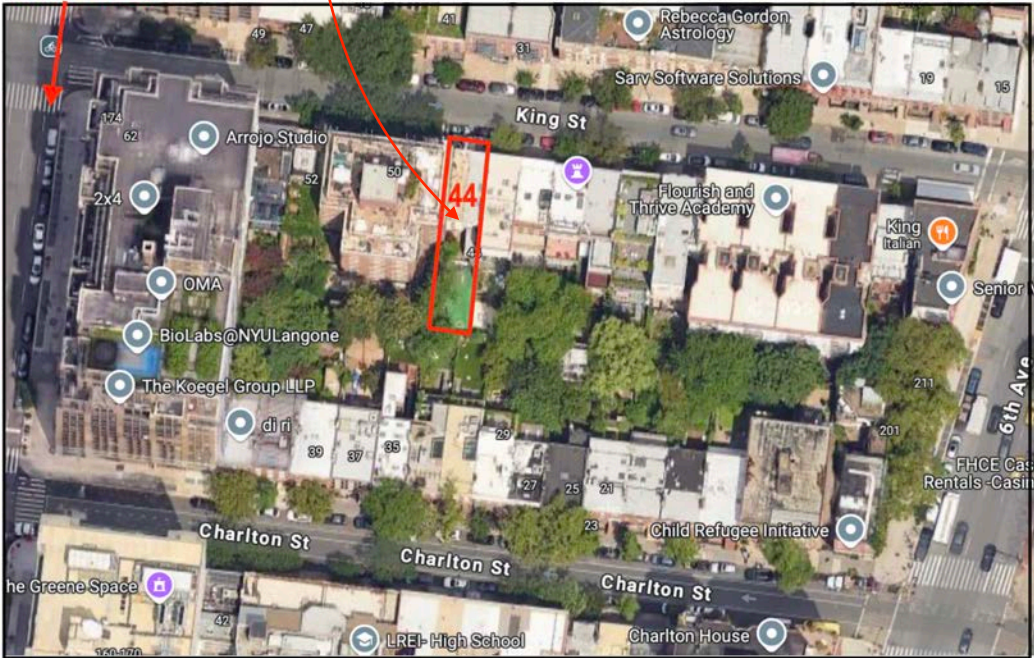
PROPOSAL TO MODIFY TOP FLOOR WINDOWS ON REAR FACADE

CHARLTON-KING-VANDAM HISTORIC DISTRICT

TOP FLOOR REAR
WINDOW MODIFICATION

44 KING TOP FLOOR WINDOW MODIFICATION LOCATION
- set back between neighboring 42 King and 50 King
- not visible from the street

VARICK ST



GOOGLEMAP AERIAL VIEW LOCATION PLAN

NORTH



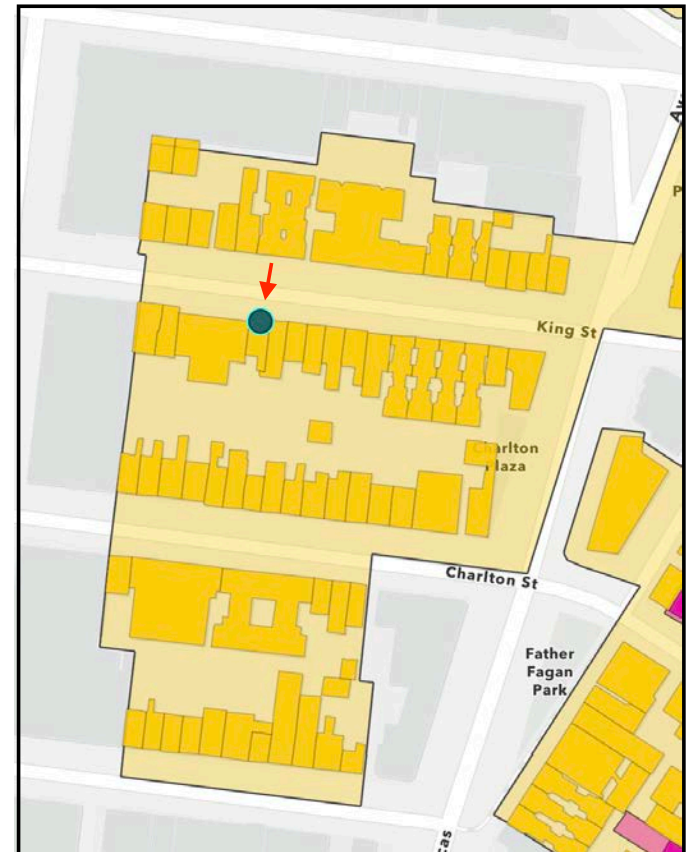
44 KING REAR

44 King Street - New York, NY 10014

PROPOSAL TO MODIFY TOP FLOOR WINDOWS ON REAR FACADE

CHARLTON-KING-VANDAM HISTORIC DISTRICT

HISTORICAL CONTEXT



CHARLTON-KING-VANDAM HISTORIC DISTRICT MAP

44 King Street - New York, NY 10014

PROPOSAL TO MODIFY TOP FLOOR WINDOWS ON REAR FACADE

CHARLTON-KING-VANDAM HISTORIC DISTRICT

EXISTING CONDITIONS



44 KING FRONT FACADE



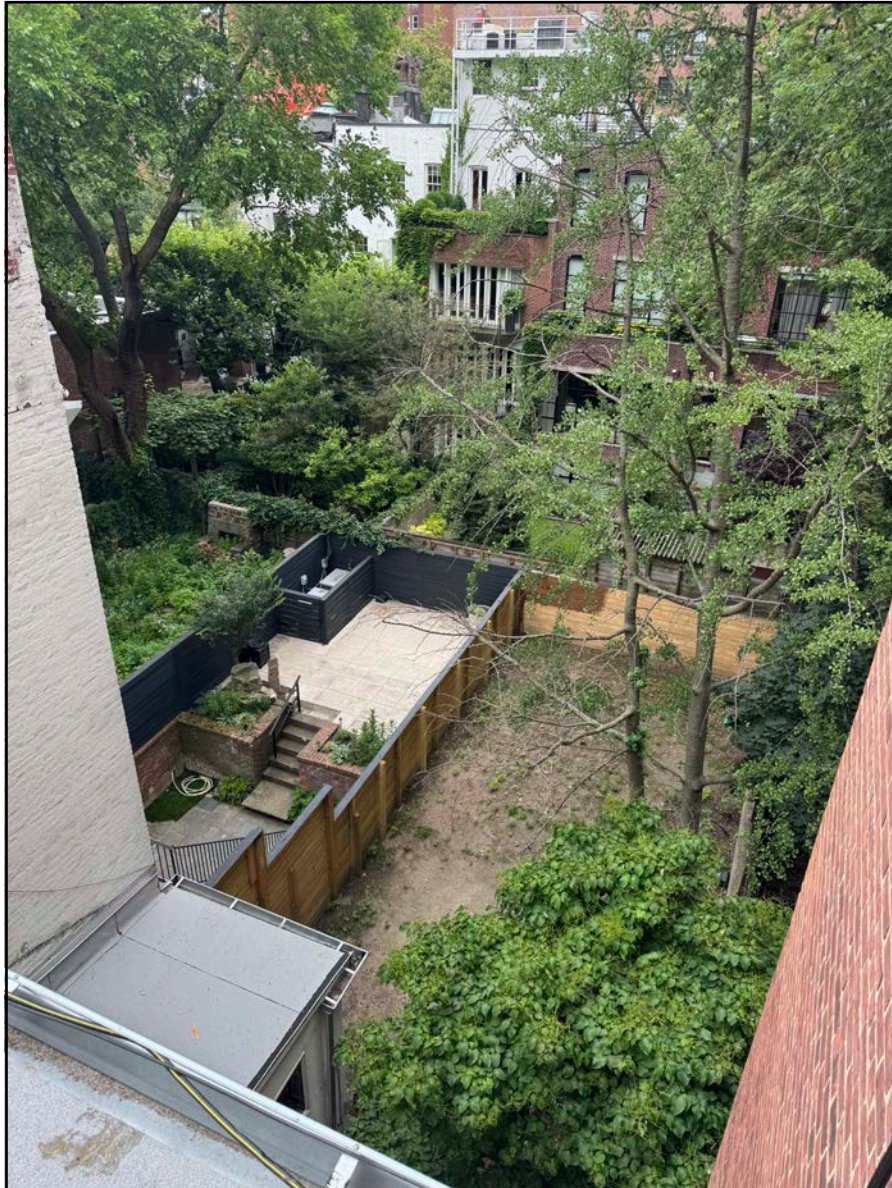
44 KING REAR FACADE

44 King Street - New York, NY 10014

PROPOSAL TO MODIFY TOP FLOOR WINDOWS ON REAR FACADE

CHARLTON-KING-VANDAM HISTORIC DISTRICT

EXISTING CONDITIONS



Close Up - 44 King Top Floor Rear Windows

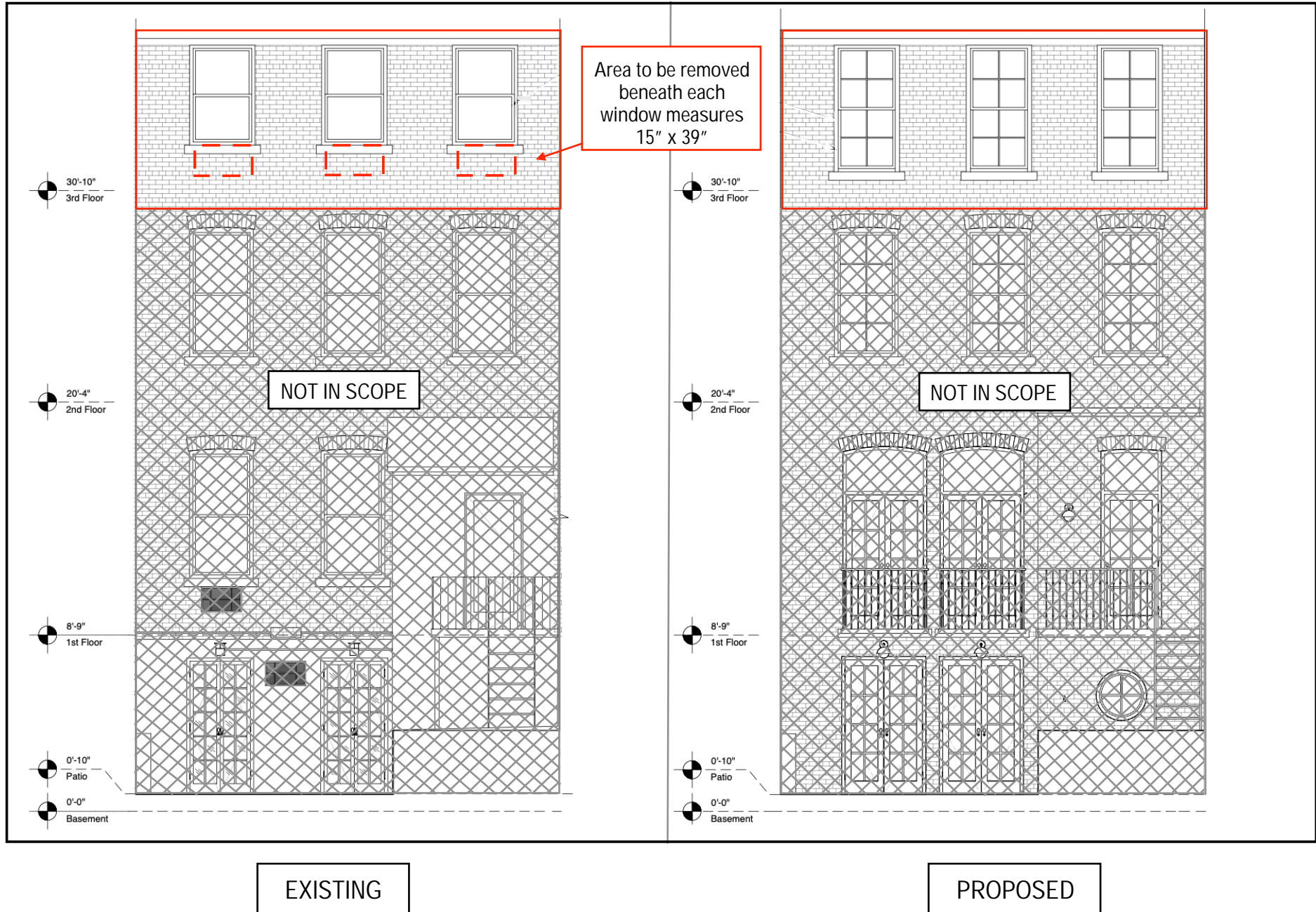
← The view from the top floor rear windows shows that there is no visibility from the street.

44 King Street - New York, NY 10014

PROPOSAL TO MODIFY TOP FLOOR WINDOWS ON REAR FACADE

CHARLTON-KING-VANDAM HISTORIC DISTRICT

44 KING REAR
ELEVATIONS

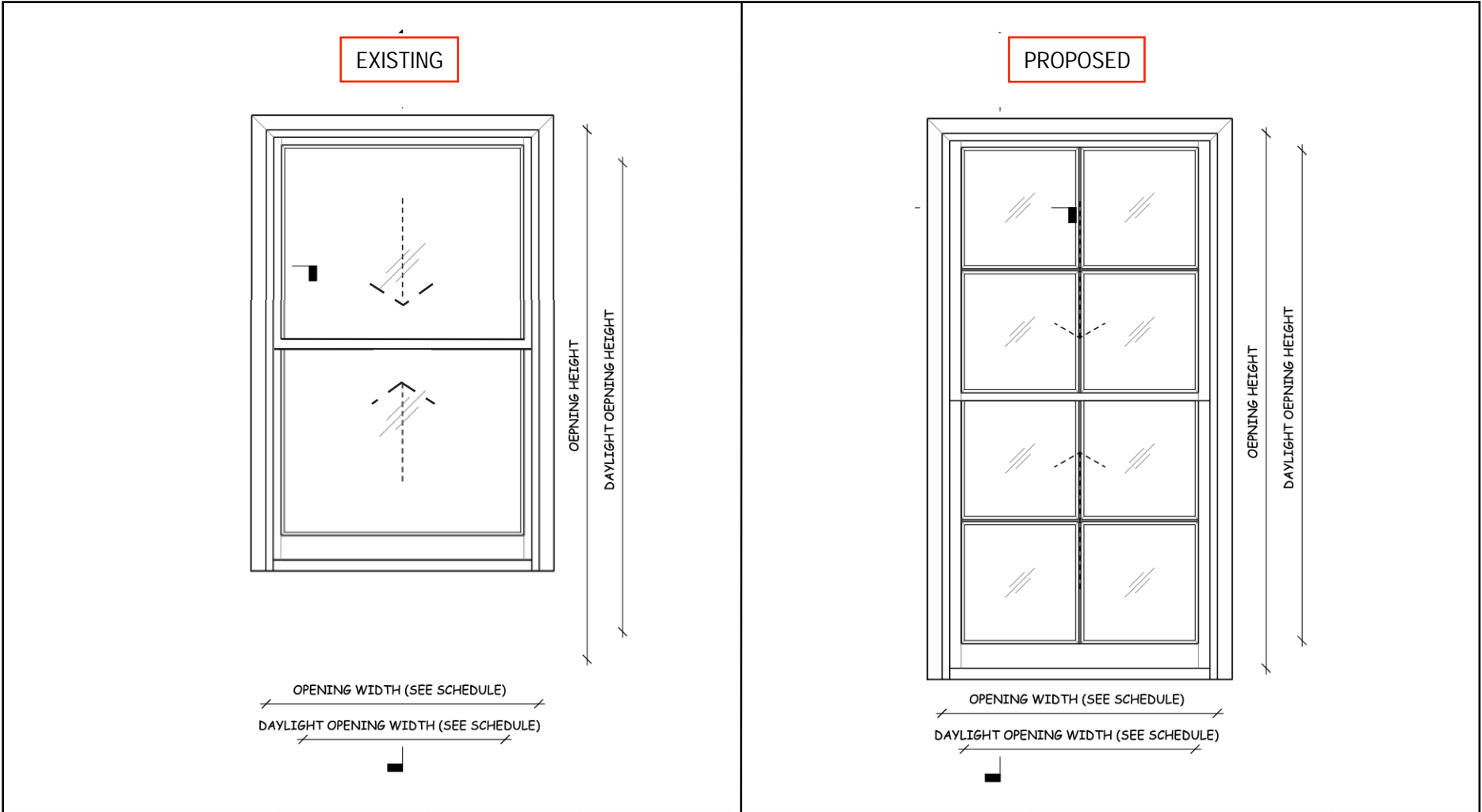


44 King Street - New York, NY 10014

PROPOSAL TO MODIFY TOP FLOOR WINDOWS ON REAR FACADE

CHARLTON-KING-VANDAM HISTORIC DISTRICT

DIMENSIONS



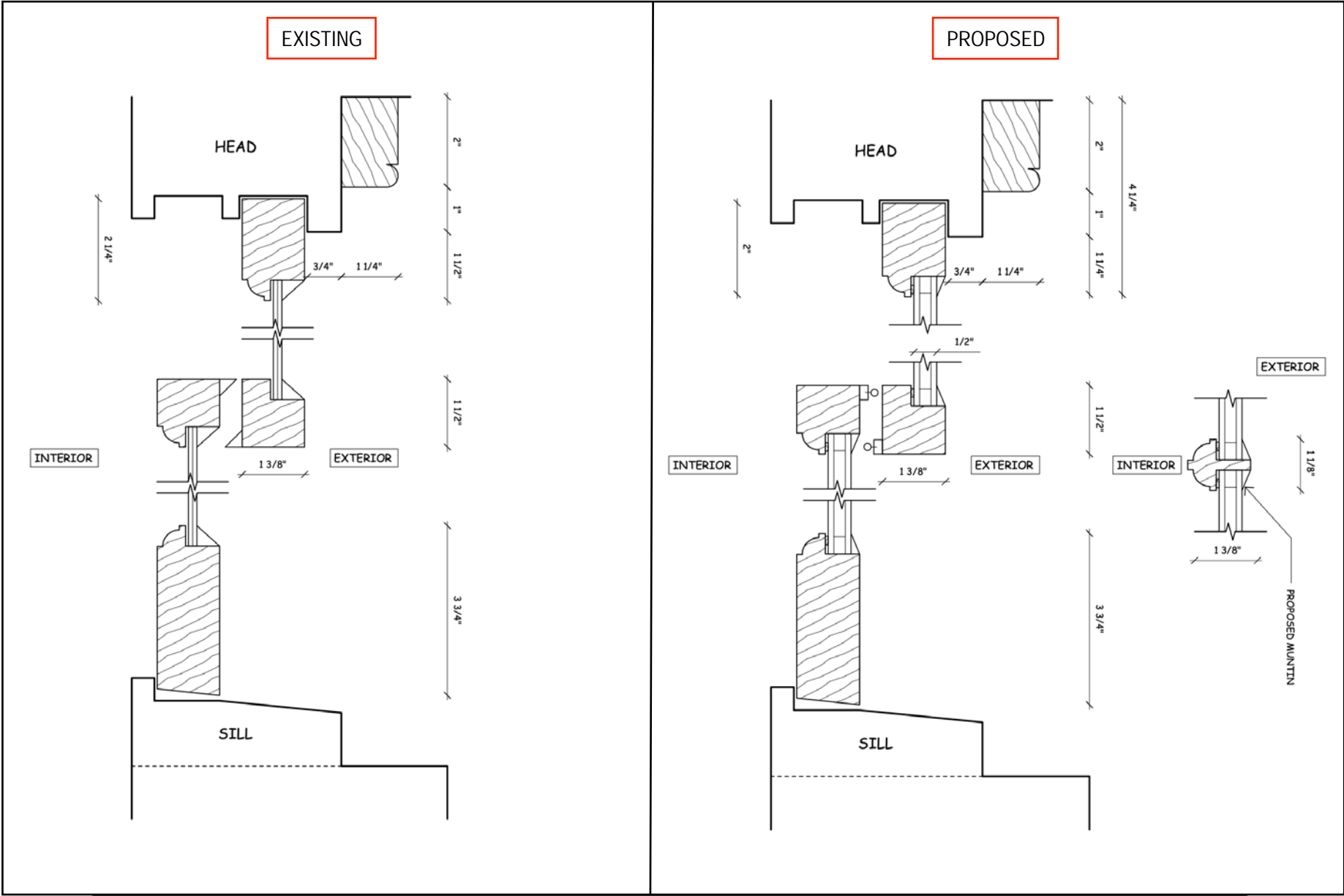
FLOOR	NUMBER	TYPE	EXISTING OPENING WIDTH	EXISTING OPENING HEIGHT	PROPOSED OPENING WIDTH	PROPOSED OPENING HEIGHT	EXISTING DAYLIGHT OPENING WIDTH	EXISTING DAYLIGHT OPENING HEIGHT	PROPOSED DAYLIGHT OPENING WIDTH	PROPOSED DAYLIGHT OPENING HEIGHT
3RD	L3-04	F	39"	60"	39"	75"	34.5"	57.75"	33.5"	69"
3RD	L3-05	F	39"	60"	39"	75"	34.5"	57.75"	33.5"	69"
3RD	L3-06	F	39"	60"	39"	75"	34.5"	57.75"	33.5"	69"

44 King Street - New York, NY 10014

PROPOSAL TO MODIFY TOP FLOOR WINDOWS ON REAR FACADE

CHARLTON-KING-VANDAM HISTORIC DISTRICT

VERTICAL SECTION



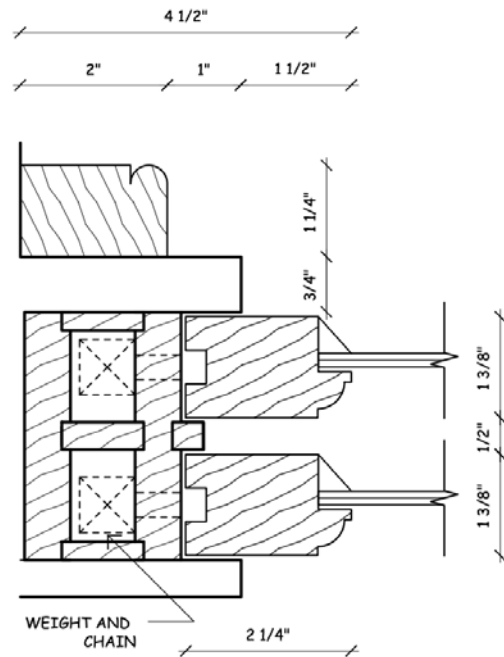
44 King Street - New York, NY 10014

PROPOSAL TO MODIFY TOP FLOOR WINDOWS ON REAR FACADE

CHARLTON-KING-VANDAM HISTORIC DISTRICT

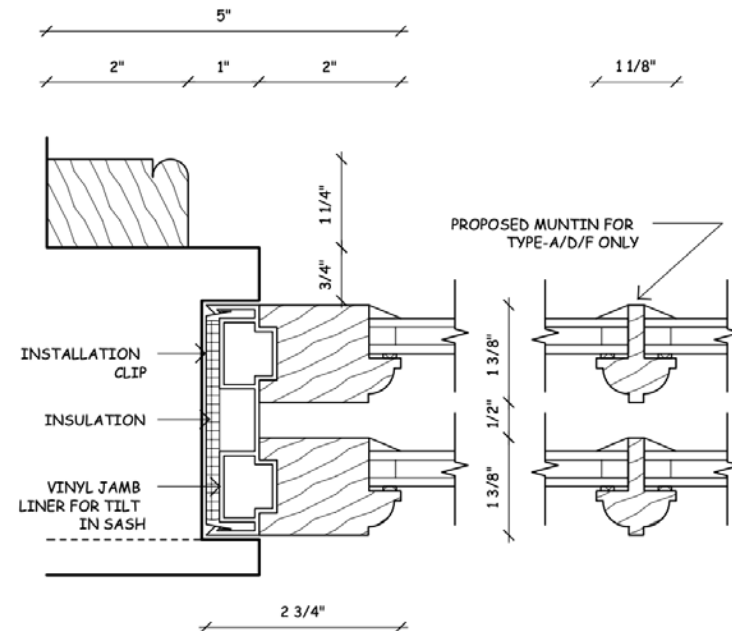
HORIZONTAL SECTION

EXISTING



INTERIOR

PROPOSED



INTERIOR

44 KING STREET, BROOKLYN
AIR FLO WINDOW CONTR. CORP.

6" = 1'-0"

EXIS/PROP HORIZONTAL SECTION

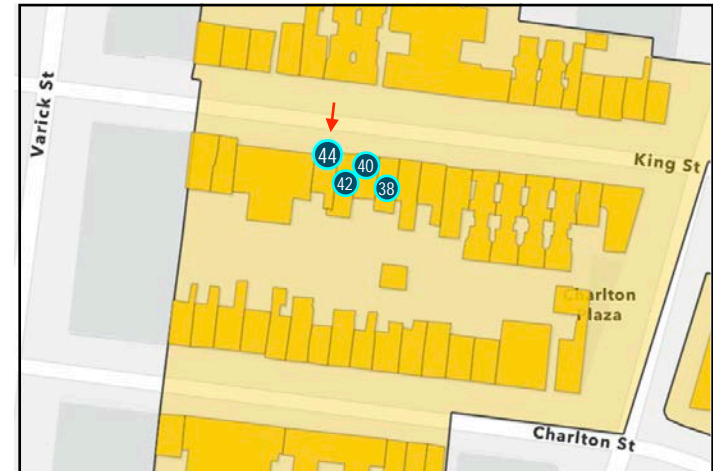
44 King Street - New York, NY 10014

PROPOSAL TO MODIFY TOP FLOOR WINDOWS ON REAR FACADE

CHARLTON-KING-VANDAM HISTORIC DISTRICT

CONTEXT

The neighboring historical brownstone buildings to the east, 42, 40 and 38 King, have all modified the top floor windows on their rear facades to match the length of the windows below.



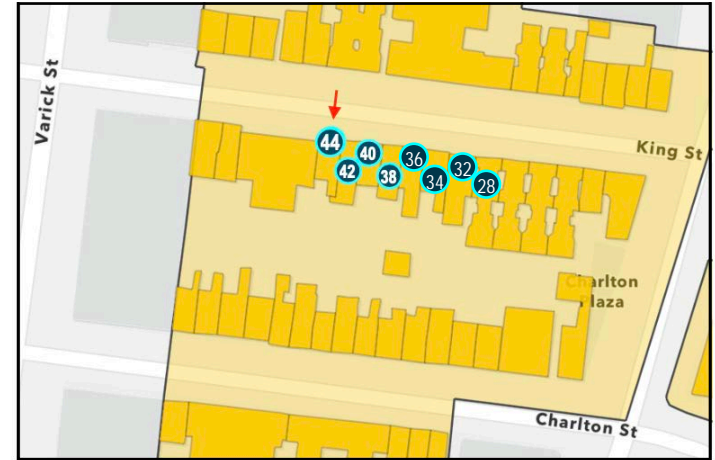
44 King Street - New York, NY 1

FRONT AND SIDE FACADE RESTORATION THREE-FAMILY DWELLI

CHARLTON-KING-VANDAM HISTORIC DISTRICT

CONTEXT

Further east on the block, 36, 34, 32 and 28 King have all made significant modifications to their rear facades.



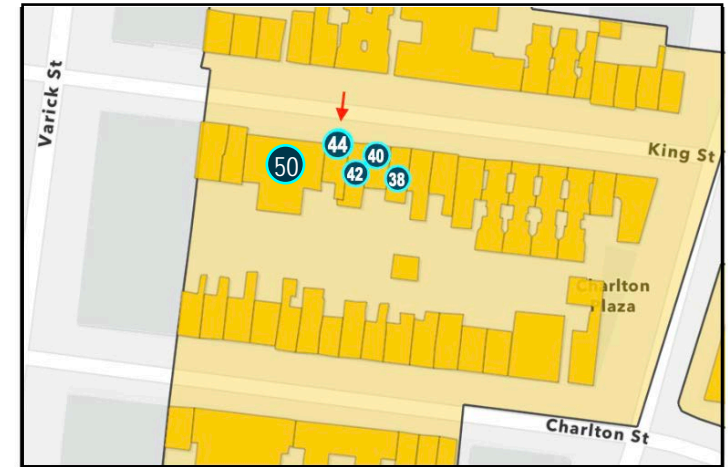
44 King Street - New York, NY 10014

FRONT AND SIDE FACADE RESTORATION THREE-FAMILY DWELLING

CHARLTON-KING-VANDAM HISTORIC DISTRICT

To the west at 50 King the 10 story building has a modern rear facade.

CONTEXT



44 King Street - New York, NY 10014

PROPOSAL TO MODIFY TOP FLOOR WINDOWS ON REAR FACADE

CHARLTON-KING-VANDAM HISTORIC DISTRICT

CONTEXT

To the south the historical brownstone buildings at 27, 31, 33 and 35 Charlton Street have all modified the top floor windows on their rear facades to match the length of the windows below.

