

286 DEKALB AVENUE, BROOKLYN, NY, 11205

CLINTON HILL HISTORIC DISTRICT

Legalized Alterations of Front
Windows Without LPC Permit(s)

WM ARCH. CORP.

ph. 516 646 7689
e. info@wmarchcorp.com
130-30 31st Avenue suite 819, Flushing NY 11354

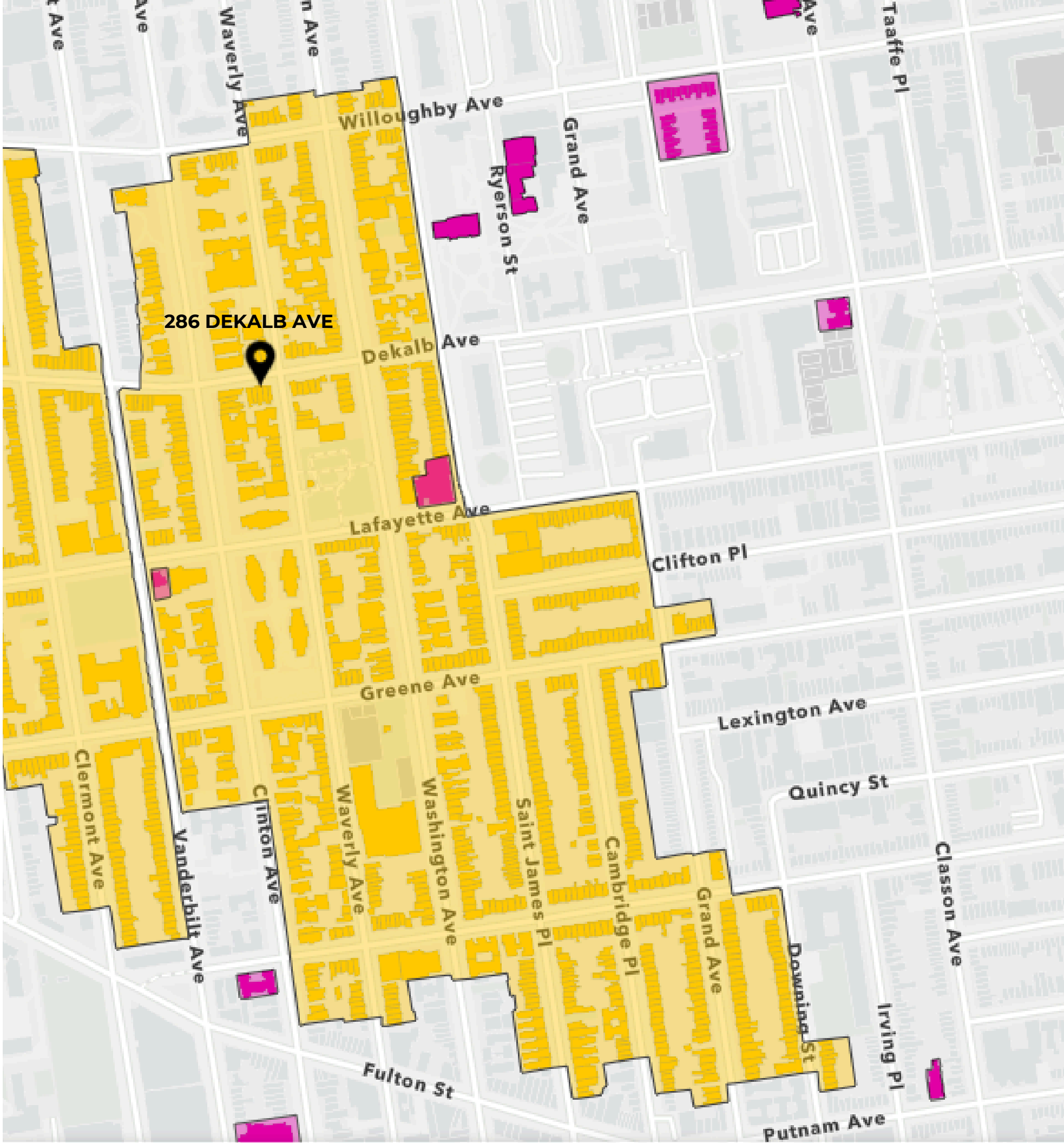


CLINTON HILL HISTORIC DISTRICT

The property is located between Waverly Ave and Clinton Ave.



Historical 1940s photo.



STREETSCAPE CONTEXT



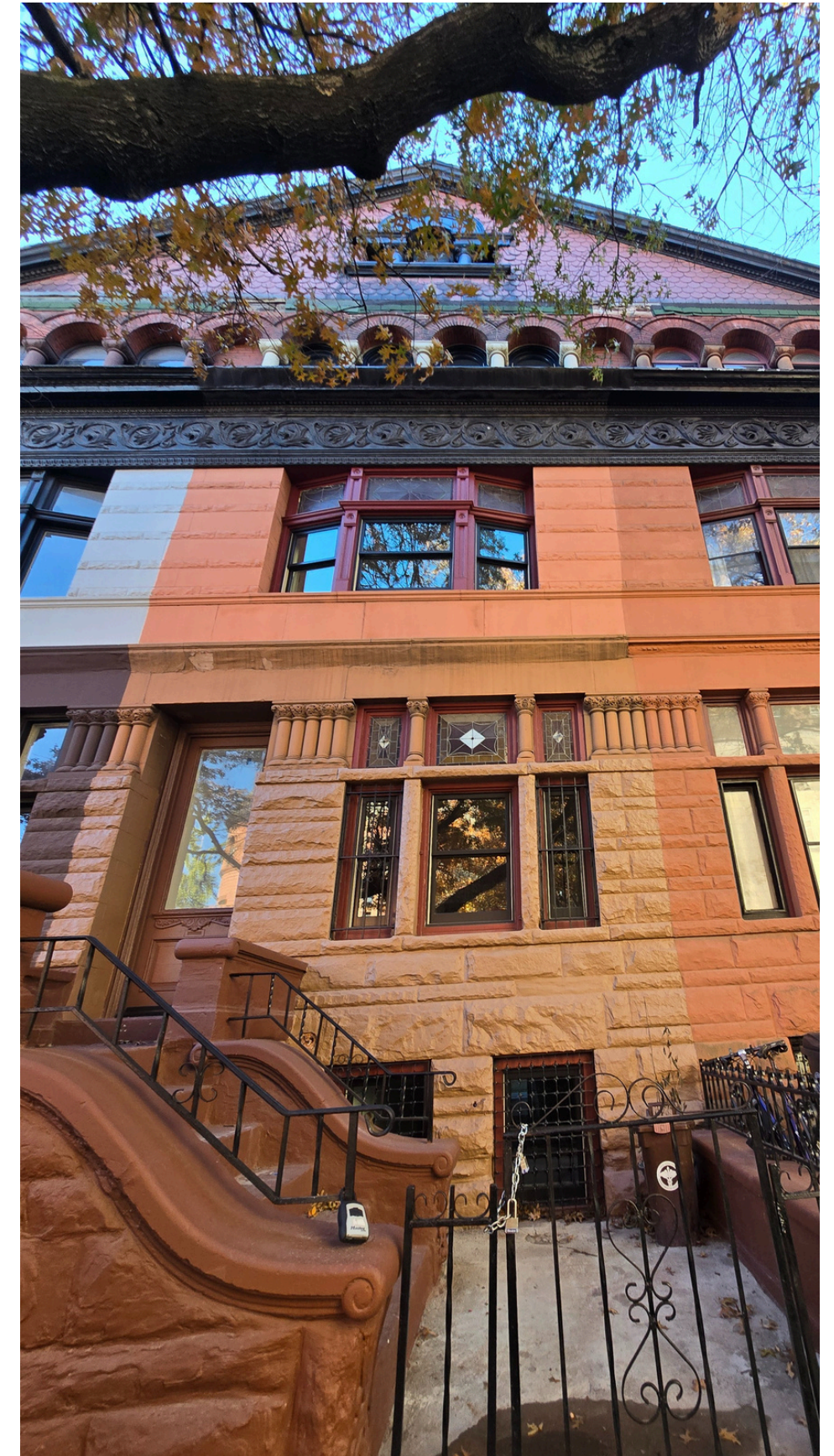
286 Dekalb



Historical 1940s photo.



Prior to Work Photo, 2024.



Current Photo, 2025.

PRIOR TO WORK COMPLETED



Basement Windows: EXISTING

WORK COMPLETED

Replacing of existing windows to ***new wood double hung*** windows without LPC approval.

Basement Windows: CURRENT



PRIOR TO WORK COMPLETED

1st Floor Windows: EXISTING



WORK COMPLETED

Replacing of existing windows to
new wood double hung windows
without LPC approval.

1st Floor Windows: CURRENT



PRIOR TO WORK COMPLETED

2nd Floor Windows: EXISTING



WORK COMPLETED

Replacing of existing windows to ***new wood double hung*** windows without LPC approval.

2nd Floor Windows: CURRENT



PRIOR TO WORK COMPLETED

3rd Floor Windows: EXISTING



WORK COMPLETED

Replacing of existing windows to
new wood SINGLE hung windows
without LPC approval.

3rd Floor Windows: CURRENT



286 DEKALB AVENUE

