

November 25, 2025
Public Hearing

The current proposal is:

Preservation Department – Item 6, LPC-26-04034

176 Parkside Avenue – Prospect Park – Scenic Landmark Borough of Manhattan

To testify virtually, please join Zoom

Webinar ID: 161 161 2069

Passcode: 557080

By Phone: 646-828-7666 (NY)

833-435-1820 (Toll-free)

833-568-8864 (Toll-free)

Note: If you want to testify virtually on an item, join the Zoom webinar at the agenda's "Be Here by" time (about an hour in advance). When the Chair indicates it's time to testify, "raise your hand" via the Zoom app if you want to speak (*9 on the phone). Those who signed up in advance will be called first.



NYC Parks



Shirley Chisholm Pavilion & Parkside Restroom Reconstruction

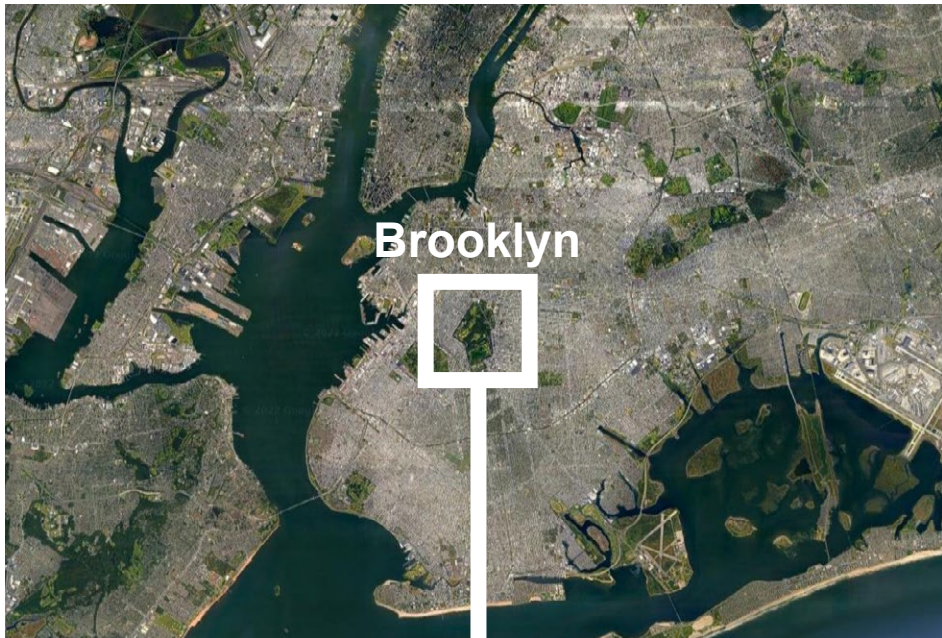
Located adjacent to the Parkside and Ocean Ave. entrance to Prospect Park,
in the Borough of Brooklyn

Landmarks Preservation Commission Design Review
November 25, 2025

Total Budget: \$6,875,000 (Building)
City Council District 40

\$750,000 (Sitework)
City Council District 40

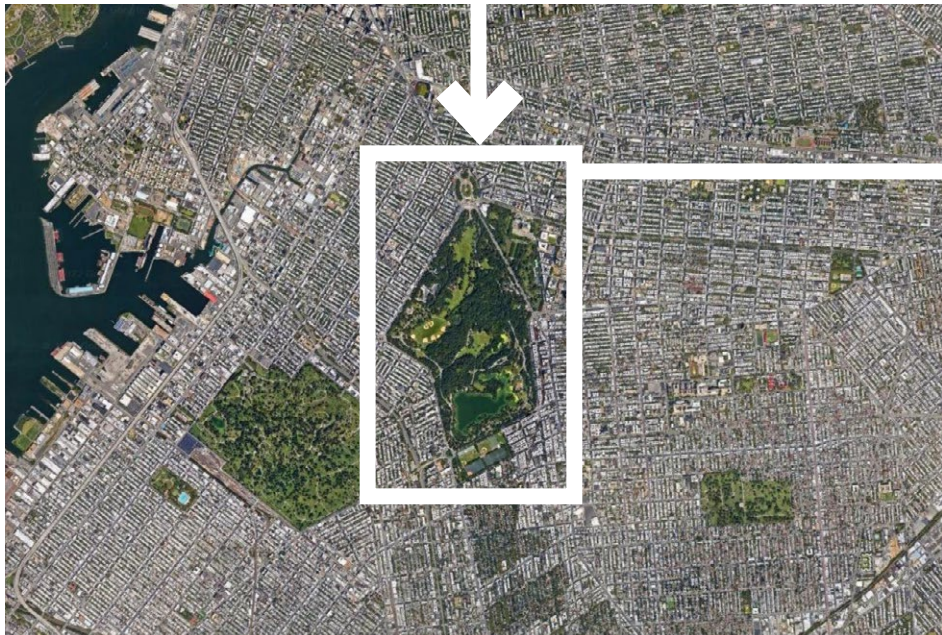
Project Size: 1/4 acre (Building)
8,000 sf (Sitework)



Brooklyn

City

2 MI



Neighborhood

1000 FT



Site

500 FT



NYC Parks



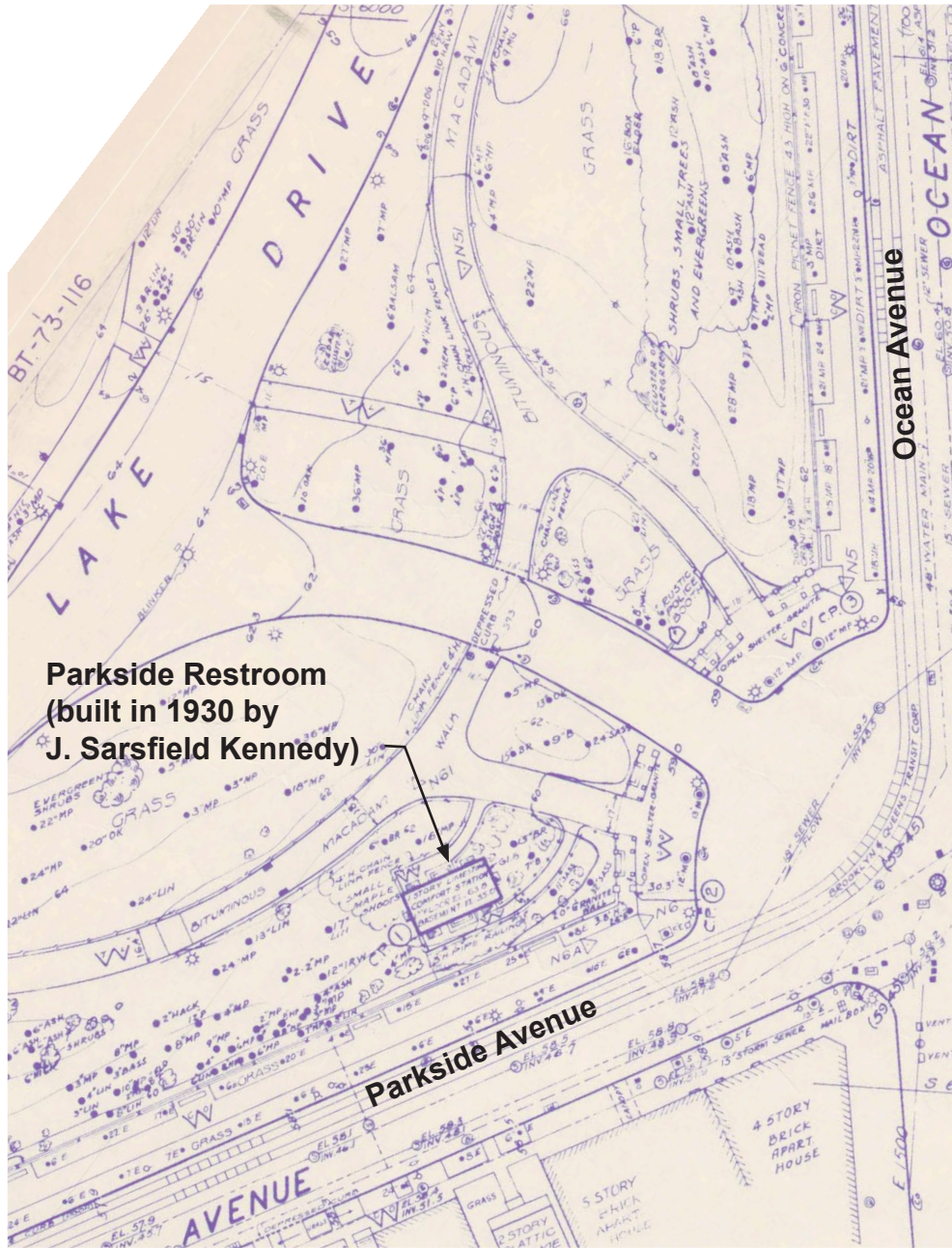
Prospect Park

Shirley Chisholm Pavilion | Project Location

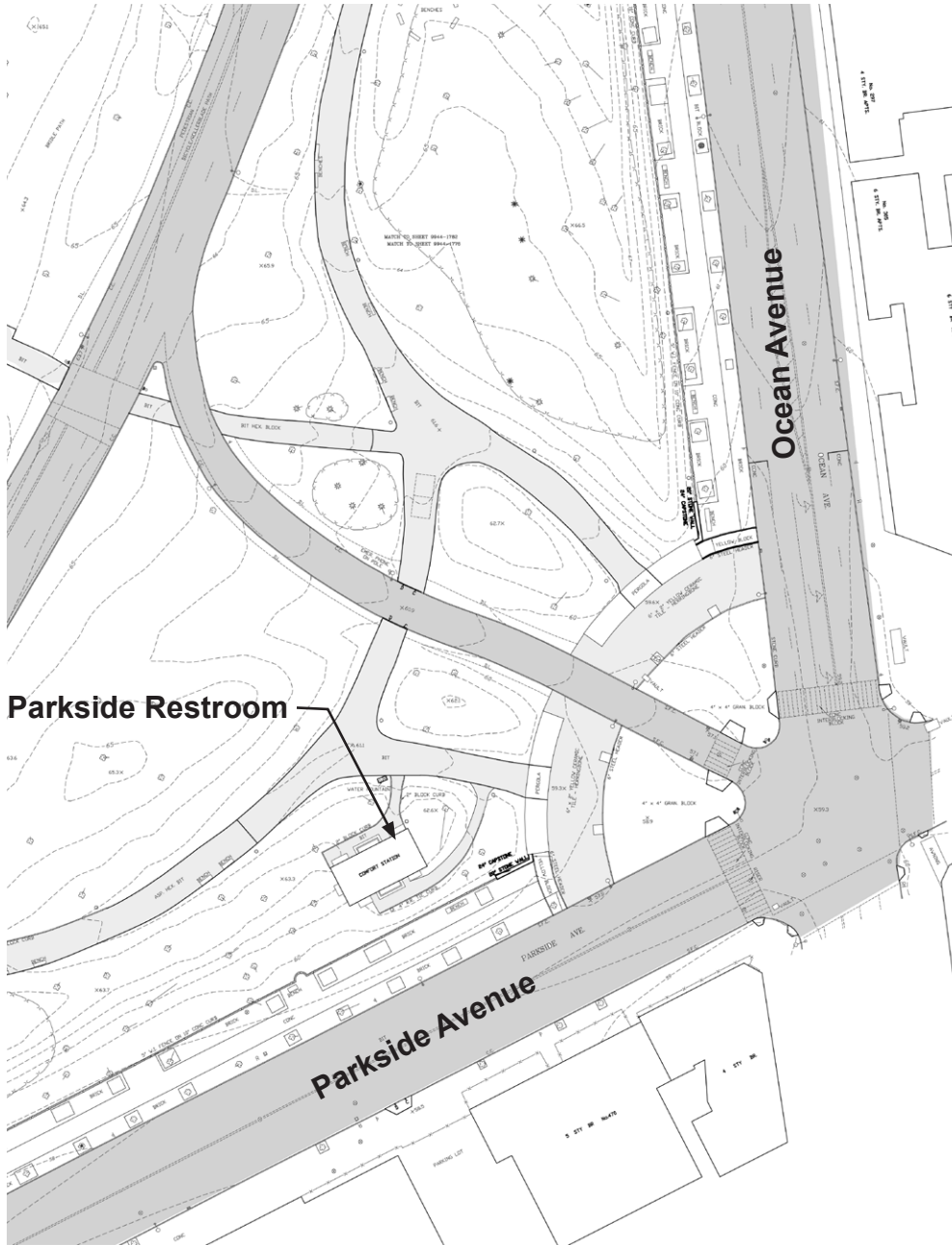




1874 Historic Olmsted & Vaux Plan



1935 Survey



1997 Survey



NYC Parks



Prospect Park
Shirley Chisholm Pavilion | Historic Surveys & Plans





NYC Parks



Prospect Park

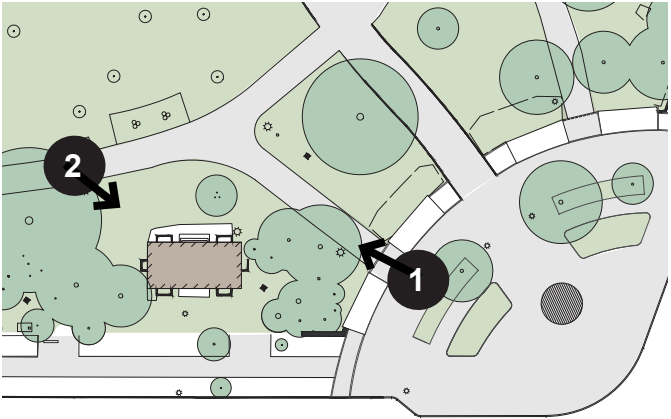
Shirley Chisholm Pavilion | Historic Photos - Parkside Restroom, 1934



1 - View from park entrance under the pergola



2 - View from west path

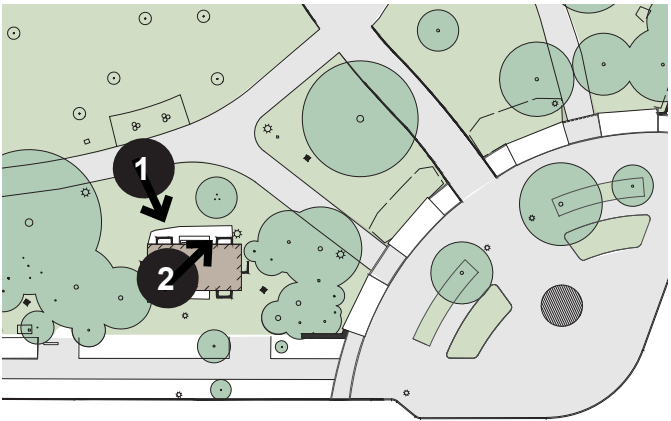




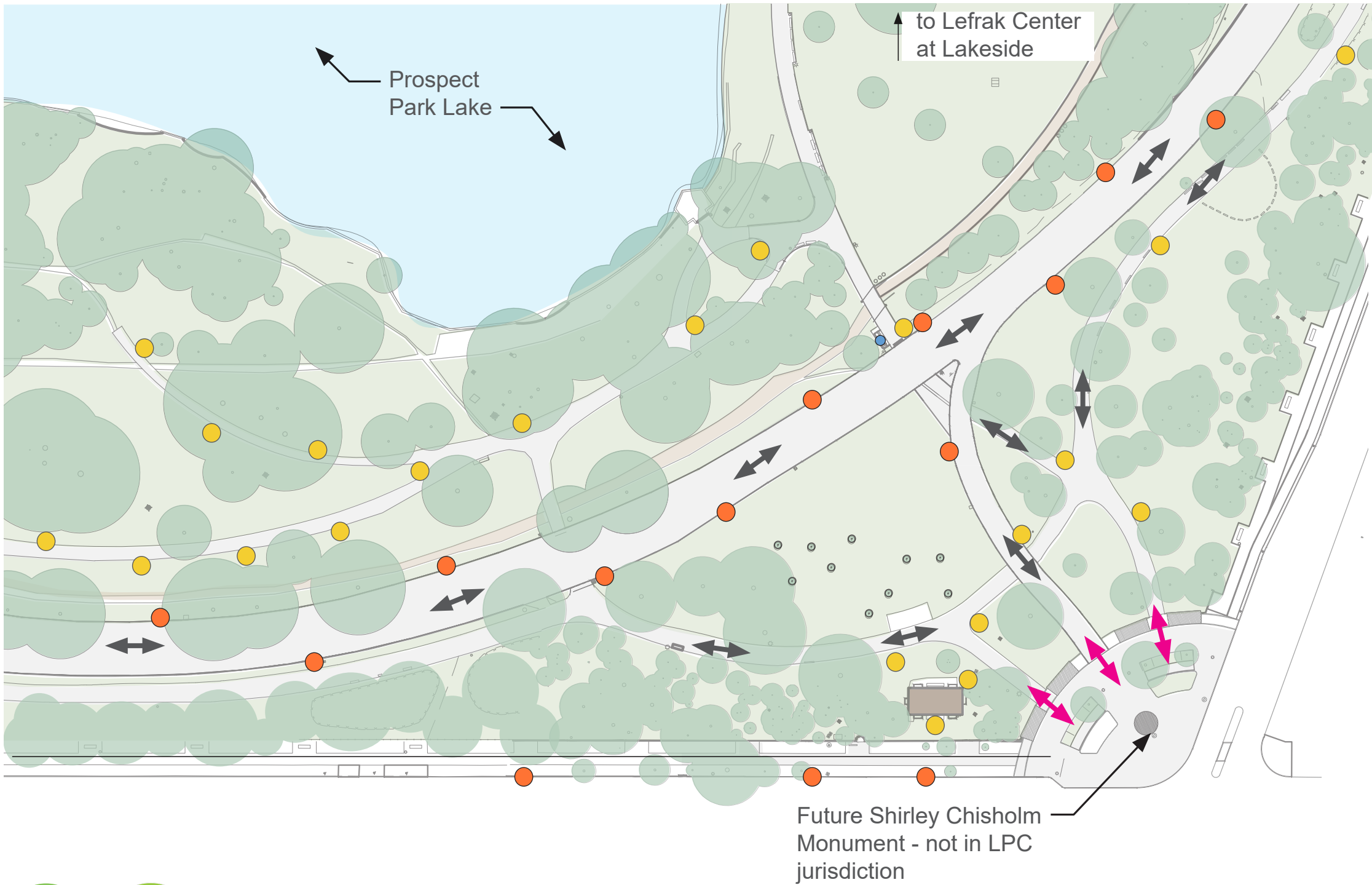
1 - Roof conditions



2 - Broken stone urn on north elevation



Prospect Park
Shirley Chisholm Pavilion | Existing Photos - Parkside Restroom



Legend

- Park Entrance
- Building or Structure
- Asphalt Pavement
- Tree
- Parks Lightpole
- Street Lightpole
- Drinking Fountain
- Traffic

Park Tree Canopy Information

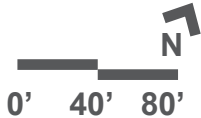
61.2% Parkland Canopy Cover
3.2% Canopy Change 2010-2017

Heat Vulnerability Index

Site is not in high HVI area.



Prospect Park
Shirley Chisholm Pavilion | Existing Conditions





GRAND ARMY PLAZA



GRAND ARMY PLAZA



BANDSHELL

GRAND ARMY PLAZA
Built 1902, removed 1962
Built 1906, removed 1962

BANDSHELL RESTROOM
Built 1941

PARK CIRCLE
Built 1896, removed 1935



Restrooms in the Perimeter (symbols NTS)

Restroom built between 1900-41

X Restroom demolished between 1900-62

Throughout Prospect Park's history, restrooms were always intended to have a lesser presence in the hierarchy of the park. Around the time that Parkside Restroom was constructed, many restrooms were also constructed in the Perimeter, some of which have been removed since. Records of these structures are few.

LINCOLN RD RESTROOM
Built 1941

WILLINK RESTROOM
Built 1912

PARKSIDE RESTROOM
Built 1930



LINCOLN RD



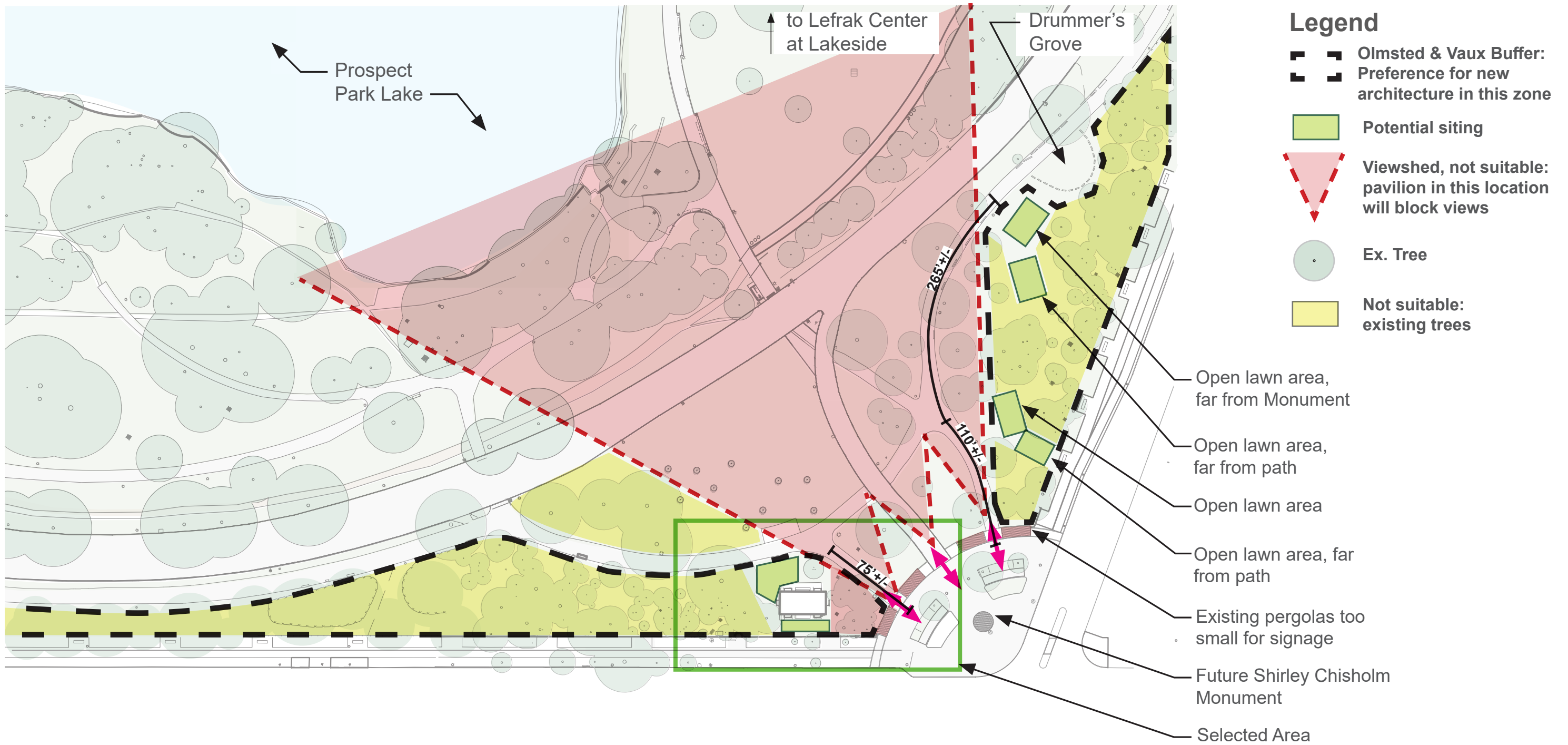
WILLINK



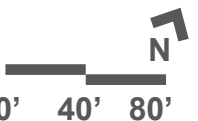
NYC Parks

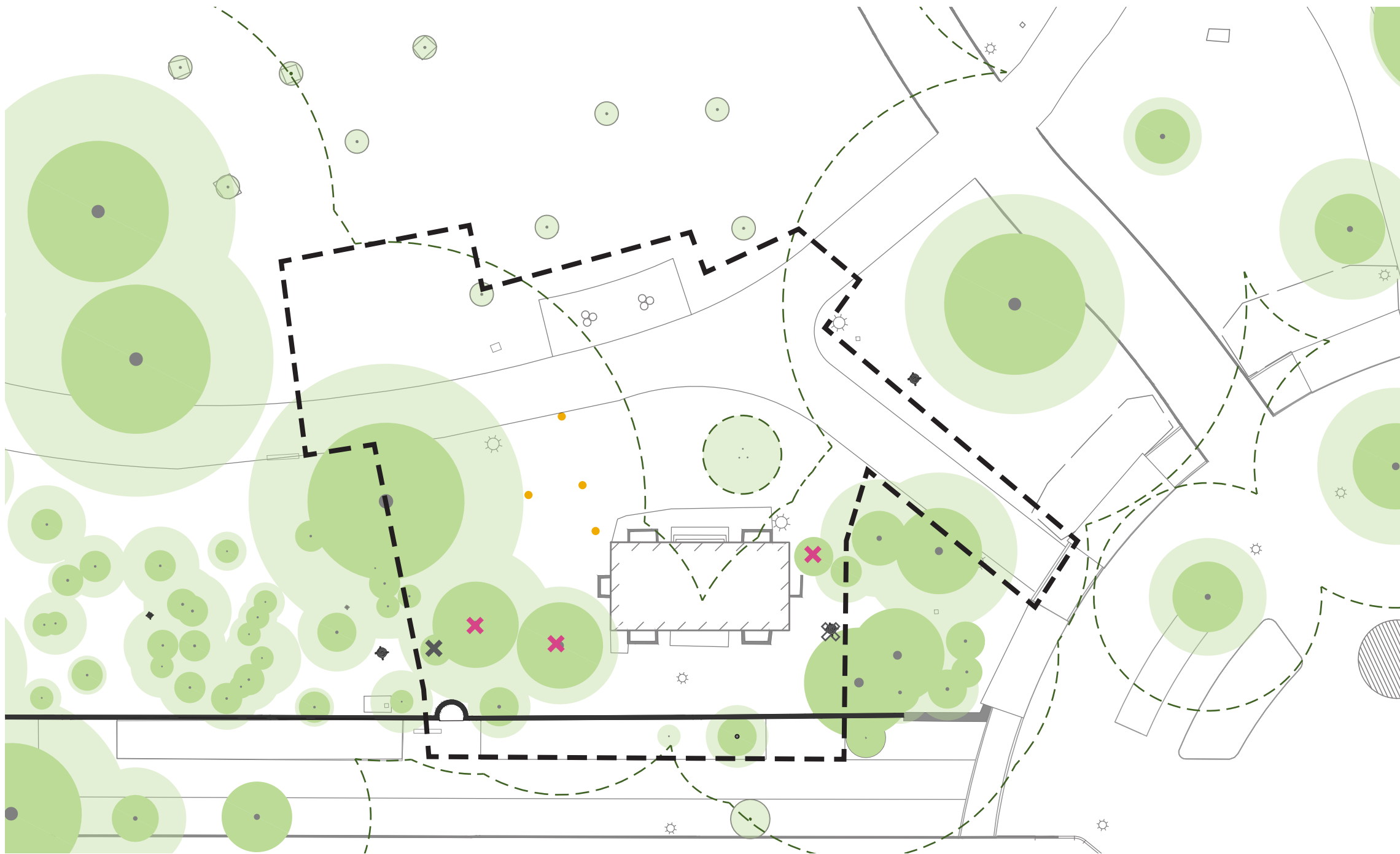


Prospect Park
Shirley Chisholm Pavilion | Prospect Park Perimeter Restrooms



Prospect Park
Shirley Chisholm Pavilion | Site Analysis & Selection





Legend

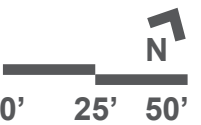
- Project Limit**
- Canopy**
- Structural Root Zone**
- Critical Root Zone**
- ✕ Stump Removal**
- ✕ Tree Removal due to poor condition**
- ✕ Tree Removal due to design considerations**
- Test pits revealed no tree roots. Verified with LCU & Brooklyn Forestry.**



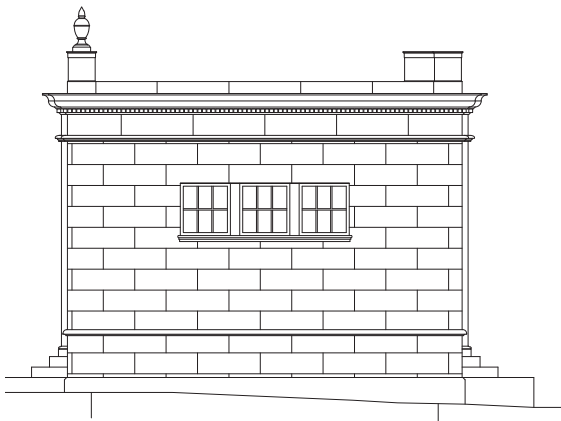
NYC Parks



Prospect Park Shirley Chisholm Pavilion | Tree Inventory



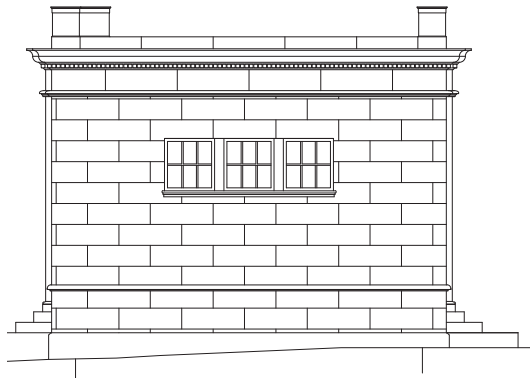
Existing Elevations



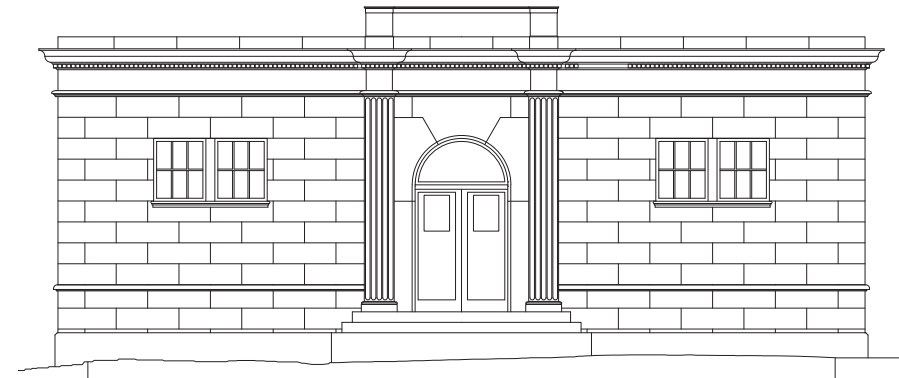
North



West

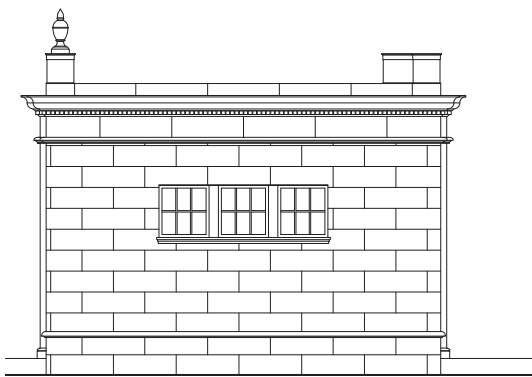


South

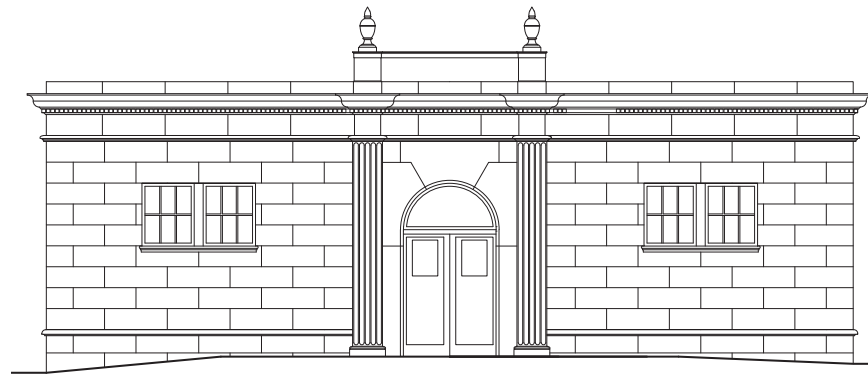


East

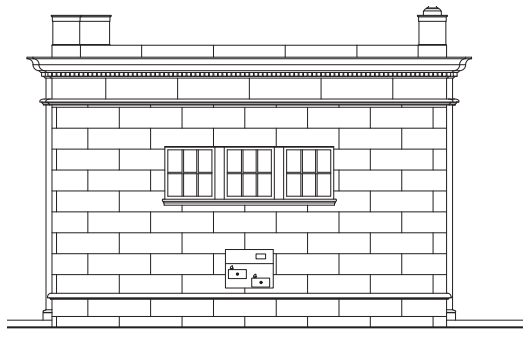
Proposed Elevations - grade change and granite step removal to allow for accessible entry



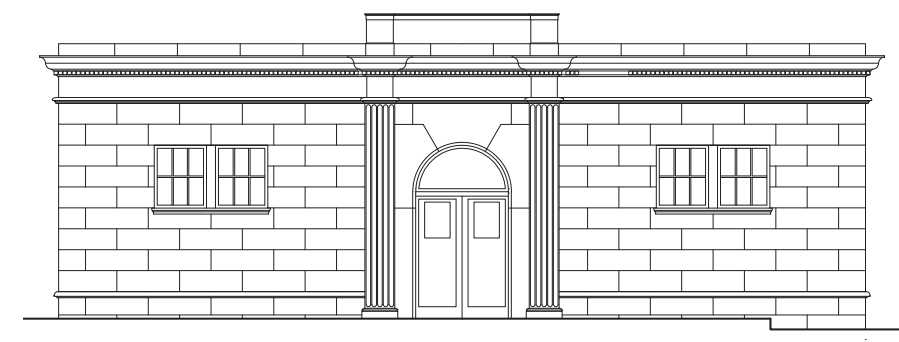
North



West



South



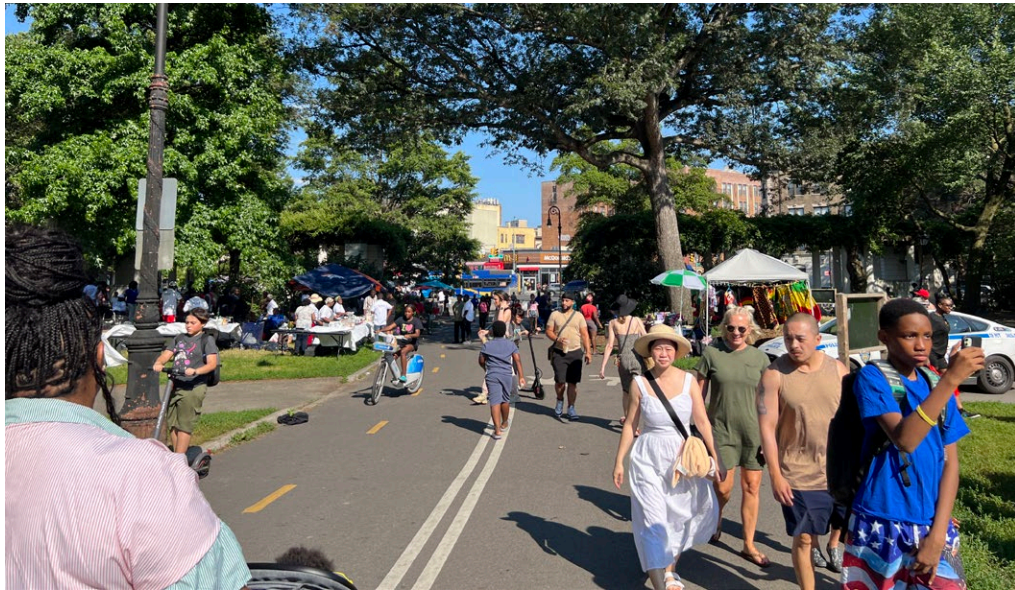
East



NYC Parks



Prospect Park
Shirley Chisholm Pavilion | Proposed Restroom Elevations



- High volume of park users at this corner especially on weekends from barbeques, Drummer's Grove, large gatherings
- Need for shaded area and seating - Pergola is only current seating
- Future additional traffic from Parkside Plaza, Shirley Chisholm monument



NYC Parks



Prospect Park
Shirley Chisholm Pavilion | Current Traffic



Model Yacht Club House (c. 1899)



Peristyle (c. 1904)



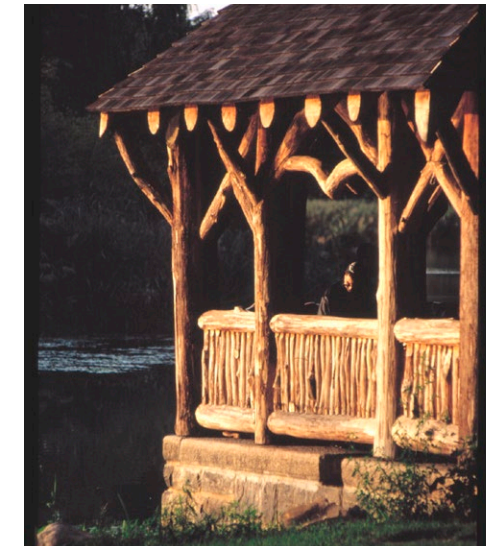
Concert Grove Pavilion (c. 1874)



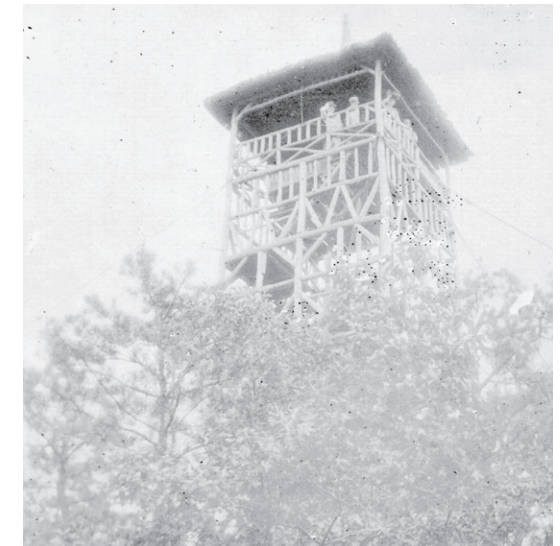
Rustic Arbor, Lower Vale (c. 1870)



Parkside & Ocean Pergola (c. 1904)



Rustic Summer House (c. 1870)



Observatory Tower (c. 1871)

Olmsted's strategy of creating visual targets, or objects in the landscape, is seen in buildings in Prospect Park like Peristyle, Boathouse, Concert Grove, and Music Pagoda.



NYC Parks



Prospect Park
Shirley Chisholm Pavilion | Prospect Park Historic Structures



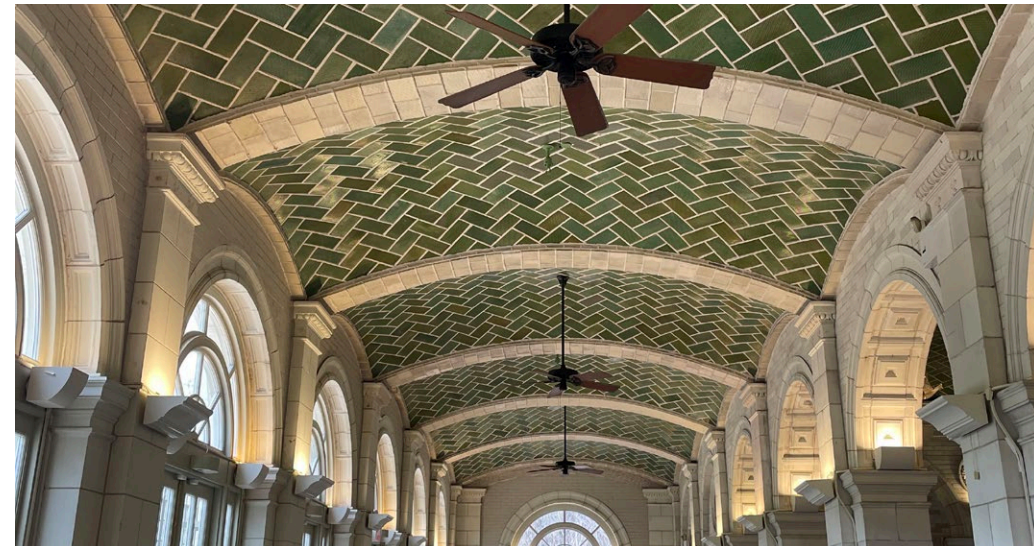
Tennis House (c. 1911)



Boathouse (c. 1905)



Willink Restroom (c. 1912)



Boathouse (c. 1905)

Terracotta has historically been used in Prospect Park in the last 100 years. Examples of terracotta in Prospect Park include the above.



NYC Parks



Prospect Park
Shirley Chisholm Pavilion | Prospect Park Terracotta



Litchfield Villa Annex (c. 1911)



Tavern on the Green Addition (c. 2019), Central Park



Boathouse Pergola addition, Central Park



LeFrak Center at Lakeside (c. 2013) replaced Wollman Rink (c. 1960)



LPQ Mineral Springs addition, Central Park



Northeast Pavilion (unbuilt)

Contemporary structures and modern additions to historic structures are not uncommon in Prospect Park and other public parks in NYC like Central Park.

Shirley Chisholm was a bastion of strength, substance, and style. Her presence was foundational, presenting substantive issues with phenomenal form and an unwillingness to compromise her beliefs for political gain.

Her legacy lives in the vibrant representations of her character that serve as reminders of her sharp sophistication, always pushing the envelope.



Chisholm's bold fashion was never in the background



Shirley Chisholm Monument



Shirley Chisholm Monument at night



Shirley Chisholm State Park



Bed-Stuy

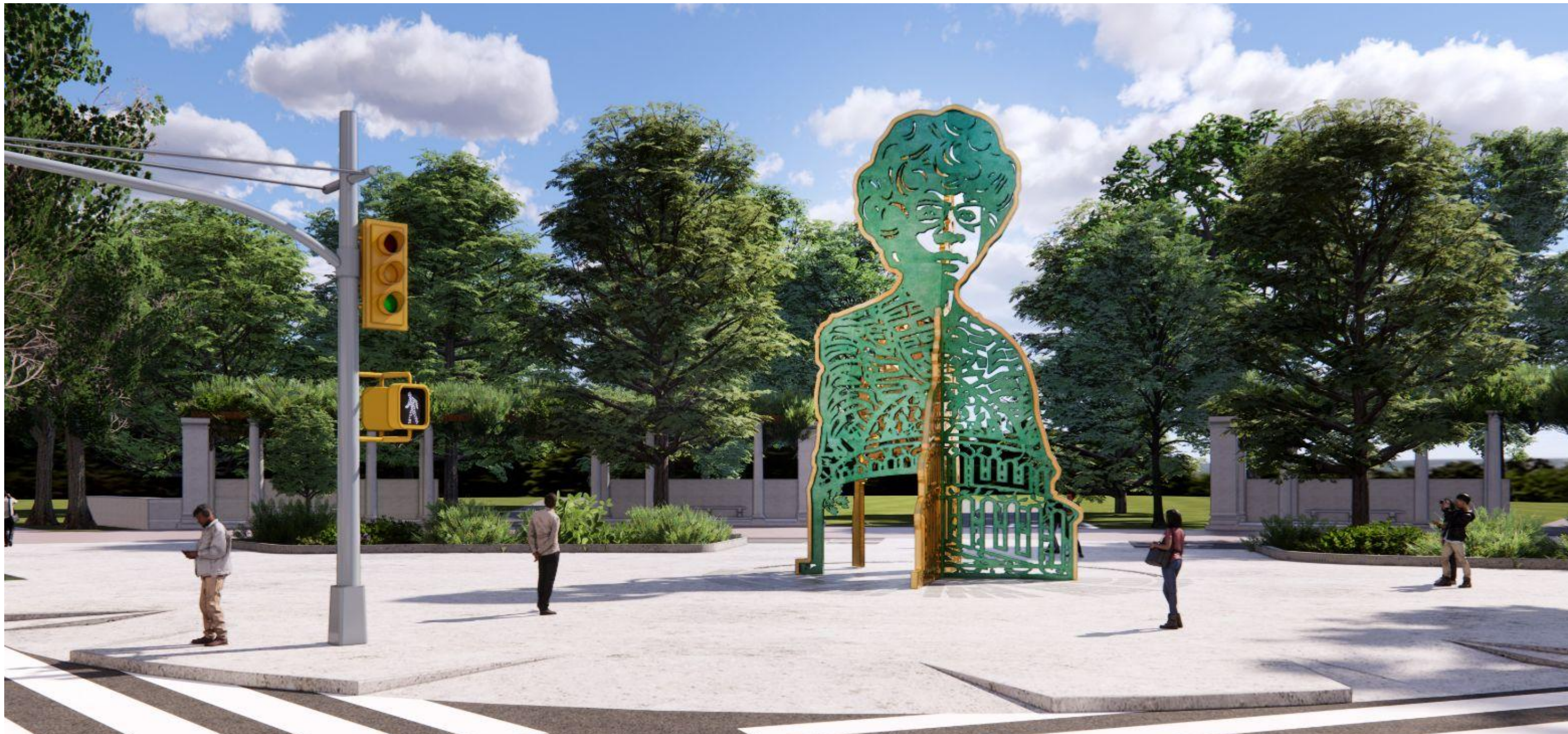


NYC Parks



Prospect Park

Shirley Chisholm Pavilion | Shirley Chisholm and Her Legacy





NYC Parks



Prospect Park
Shirley Chisholm Pavilion | Site Section





Current



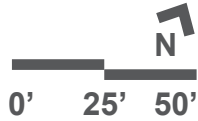
Proposed



NYC Parks



Prospect Park
Shirley Chisholm Pavilion | Before & After Site Plan

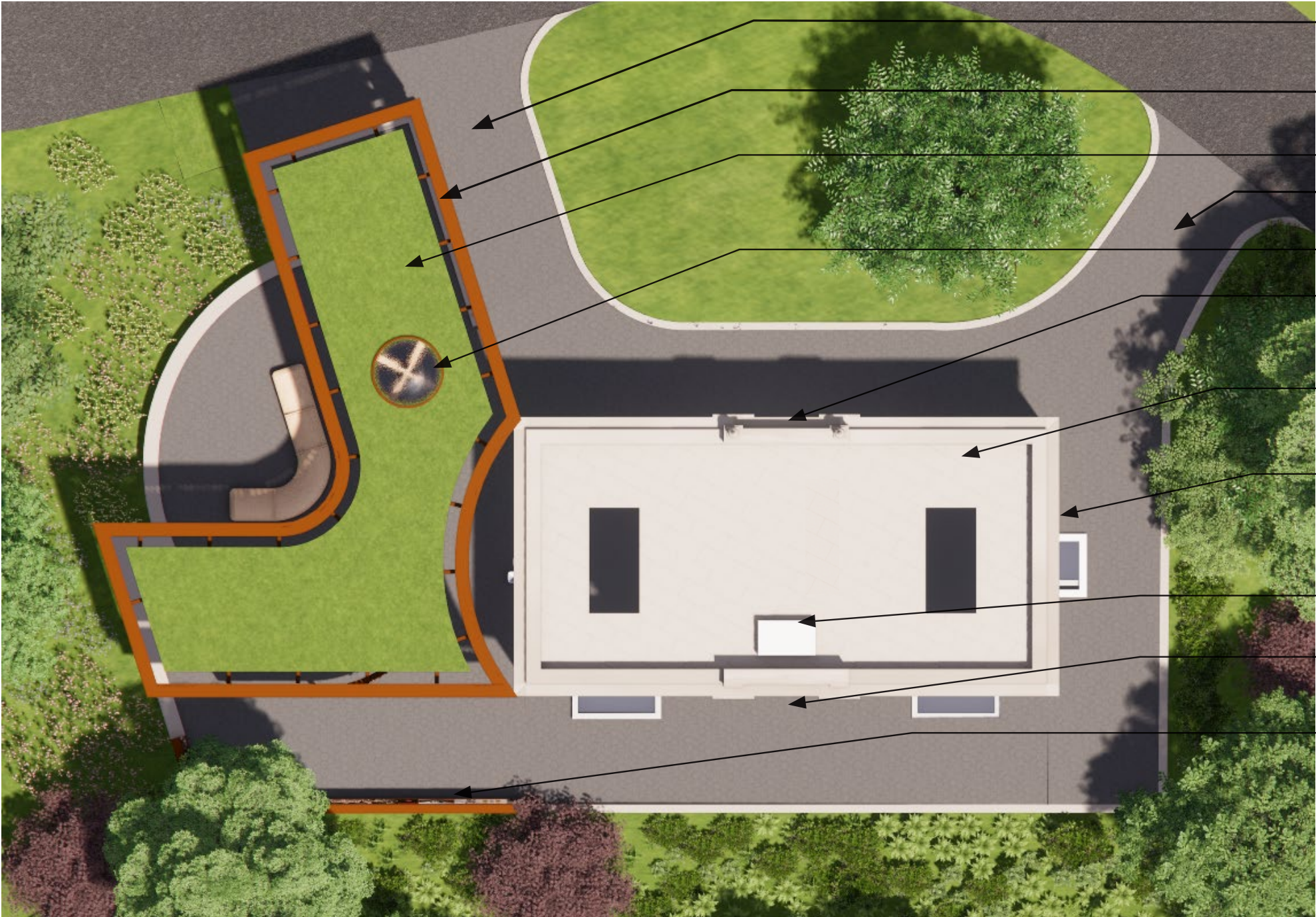


Design Elements

- Terracotta-clad wood structure with covered seating and exhibition panels
- Accessible entrance to restored restroom
- Rear plaza for additional exhibition panels
- Seating for varied gathering sizes
- Separate entrance to the building for park staff

Approx. Building Areas:

- Existing restroom - 1,650 SF
- Shaded outdoor - 1,030 SF
- Uncovered outdoor - 1,650 SF



ADA Accessible path

Open-air wood canopy

Green roof

ADA Accessible path

Skylight

Restroom Entrance

Restored Parkside Restroom

Electric gator charging

A/C Condenser Unit

Maintenance Entrance

Outdoor display area



NYC Parks



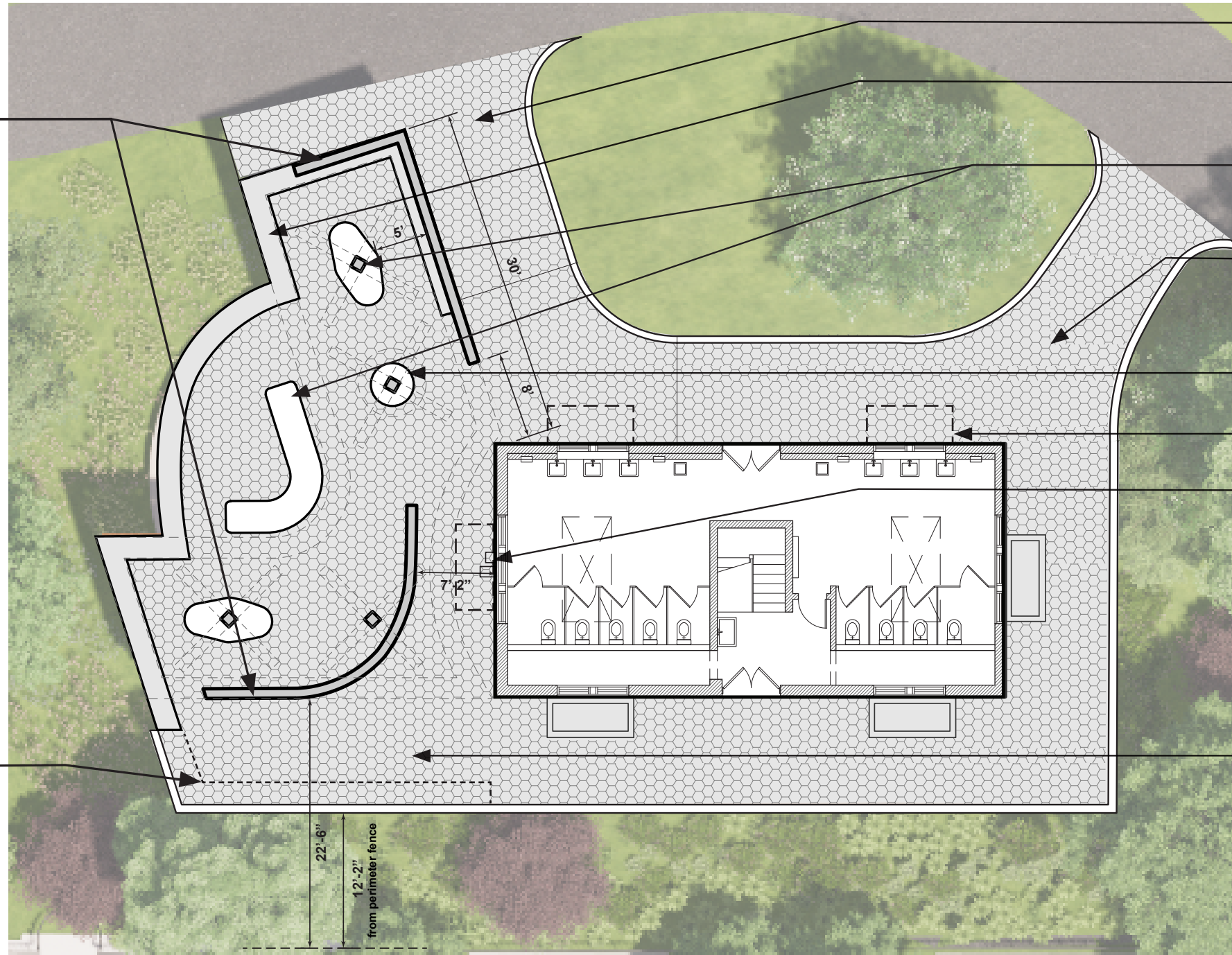
Prospect Park
Shirley Chisholm Pavilion | Site Plan



Large format panels under wood canopy



Embedded panels at rear retaining wall



ADA accessible path,
asphalt hex pavers,
<5%
4" raised seat
curb

Benches

ADA accessible path,
asphalt hex pavers,
<5%

Central Information
Kiosk

Infilled existing window
wells (3)

Water fountains
and bottle fillers

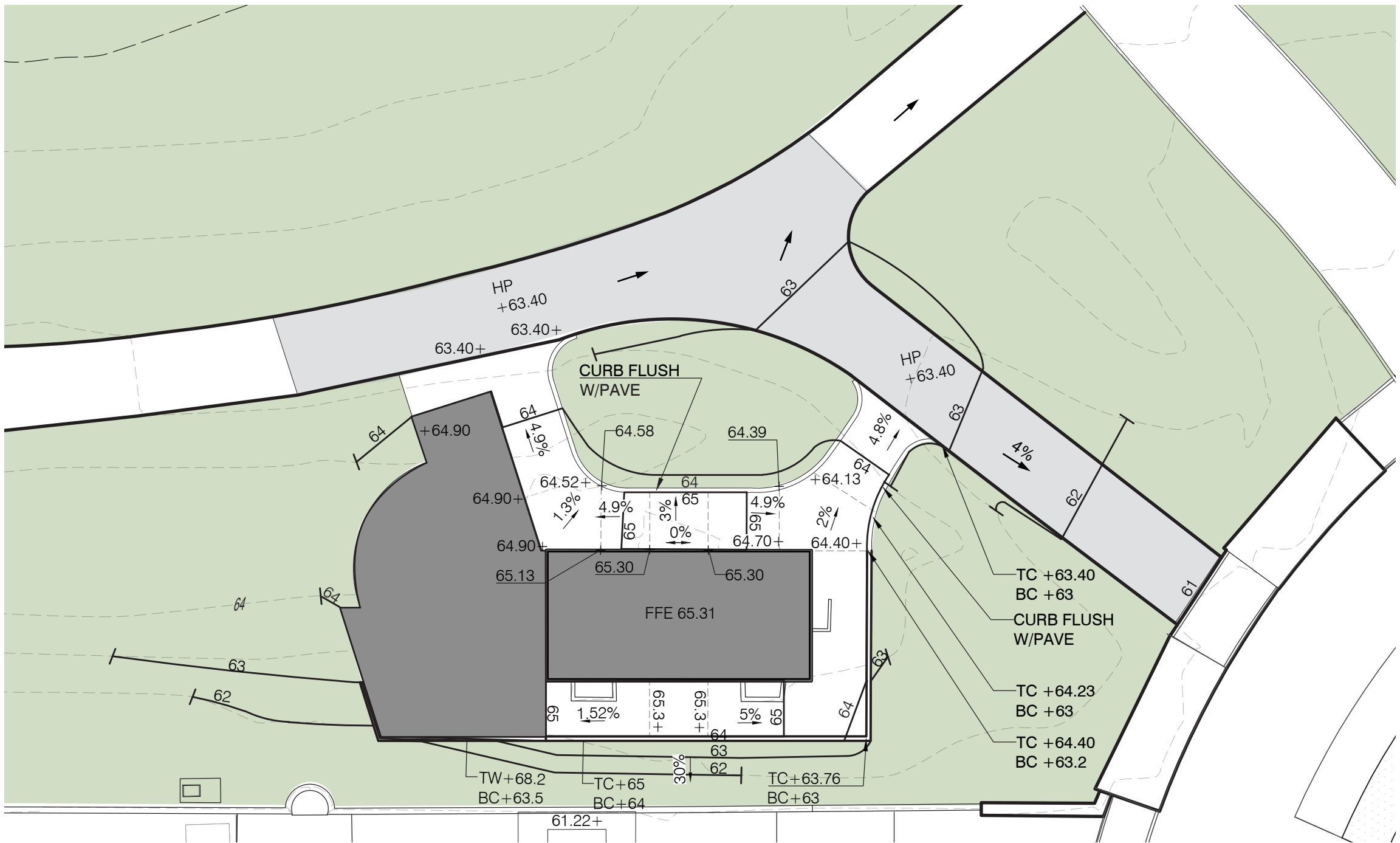
ADA accessible path,
asphalt hex pavers,
<5%



NYC Parks



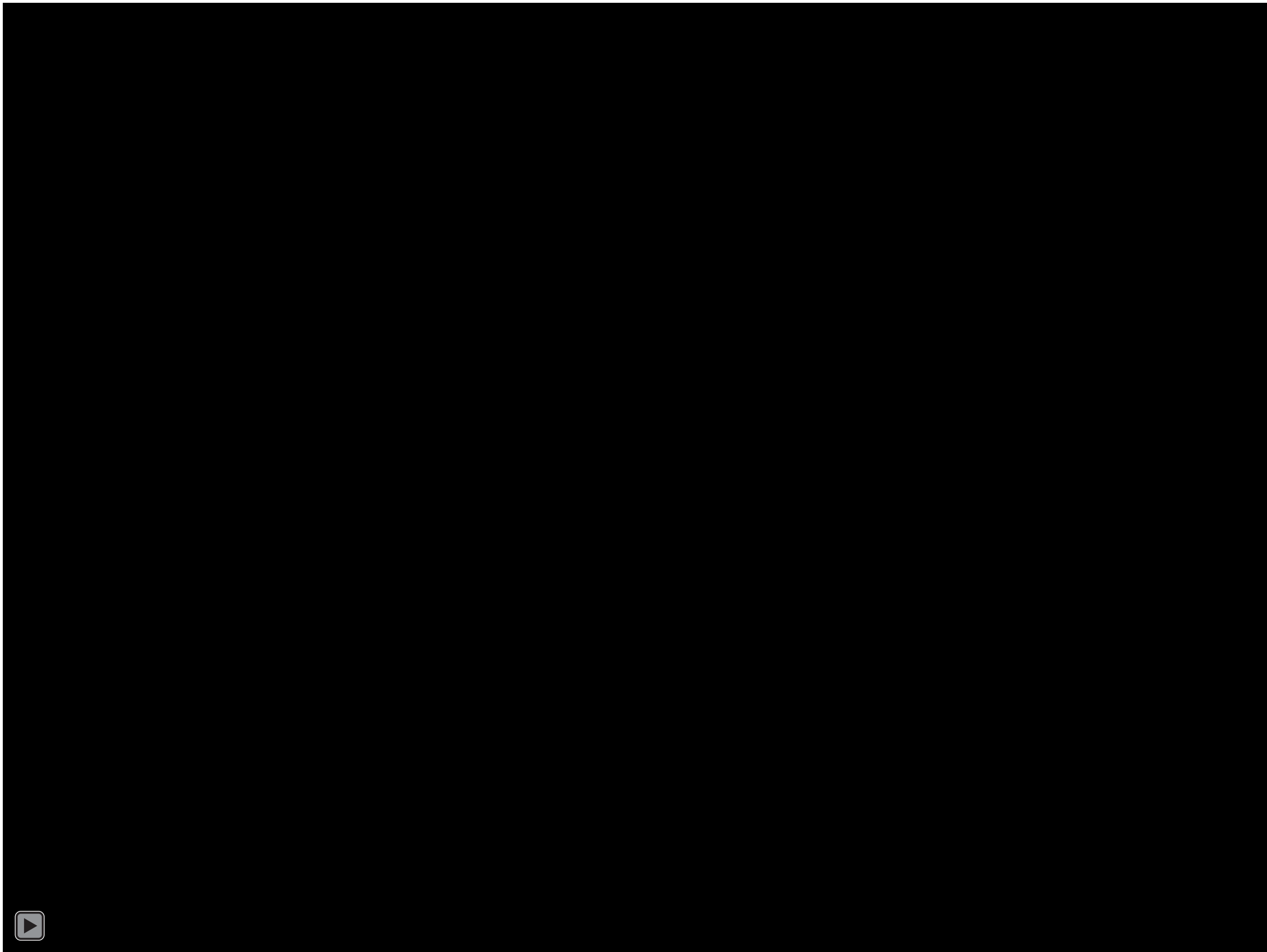
Prospect Park Shirley Chisholm Pavilion | Floor Plan



NYC Parks



Prospect Park Shirley Chisholm Pavilion | Grading Plan





Existing Conditions



Proposed



Prospect Park
Shirley Chisholm Pavilion | View from Pergola





Existing Conditions



Proposed



NYC Parks



Prospect Park
Shirley Chisholm Pavilion | View from Pergola





Prospect Park
Shirley Chisholm Pavilion | View from North



NYC Parks



Prospect Park
Shirley Chisholm Pavilion | View from West





NYC Parks



Prospect Park
Shirley Chisholm Pavilion | West Approach



NYC Parks



Prospect Park
Shirley Chisholm Pavilion | Interior View



Existing Conditions



Proposed

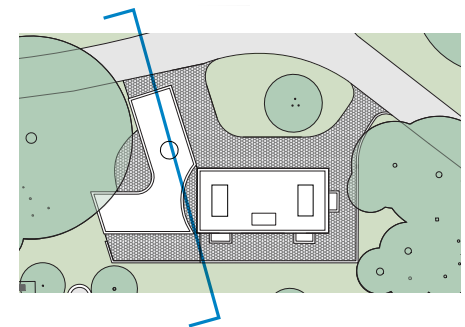


NYC Parks



Prospect Park
Shirley Chisholm Pavilion | View from Parkside Ave

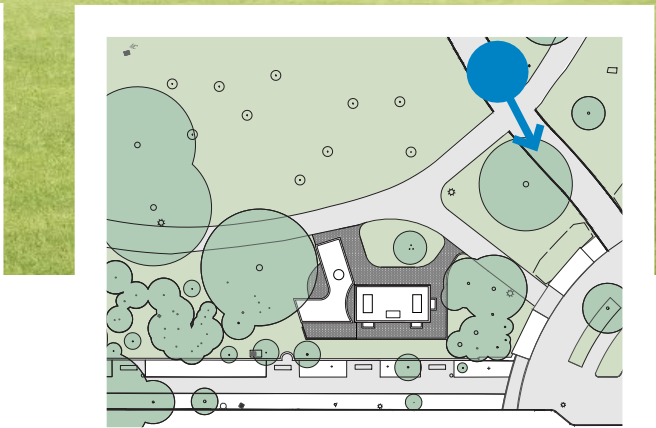




NYC Parks



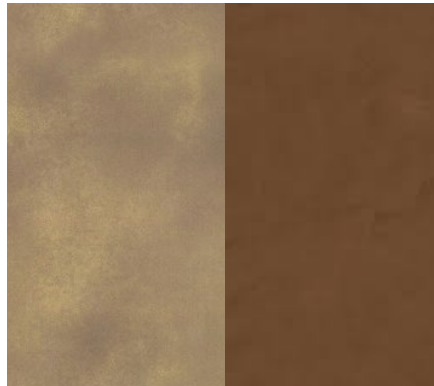
Prospect Park
Shirley Chisholm Pavilion | Section through Parkside Ave



Prospect Park
Shirley Chisholm Pavilion | View from East Drive



Painted Ceiling



Bronze Accent and Signage Lettering



Asphalt Hex Tiles on Poured in Place Concrete Base



Mass Timber Structure



Glazed Terracotta



Wood Benches



NYC Parks



Prospect Park
Shirley Chisholm Pavilion | Project Materials



NYC Parks



Prospect Park
Shirley Chisholm Pavilion | Site Section



November 25, 2025
Public Hearing

The current proposal is:

Preservation Department – Item 6, LPC-26-04034

176 Parkside Avenue – Prospect Park – Scenic Landmark Borough of Manhattan

To testify virtually, please join Zoom

Webinar ID: 161 161 2069

Passcode: 557080

By Phone: 646-828-7666 (NY)

833-435-1820 (Toll-free)

833-568-8864 (Toll-free)

Note: If you want to testify virtually on an item, join the Zoom webinar at the agenda's "Be Here by" time (about an hour in advance). When the Chair indicates it's time to testify, "raise your hand" via the Zoom app if you want to speak (*9 on the phone). Those who signed up in advance will be called first.

Appendix





Legend

- Project Limit
- Steel Fence
- Park Entrance
- Building or Structure
- Asphalt Pavement
- Tree
- Parks Lightpole
- Street Lightpole
- Drinking Fountain
- Traffic
- Parkside & Ocean Ave Perimeter_B073-118M, Construction 2025-26
- Siting studies

Park Tree Canopy Information

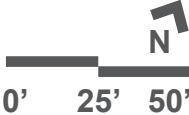
61.2% Parkland Canopy Cover
3.2% Canopy Change 2010-2017

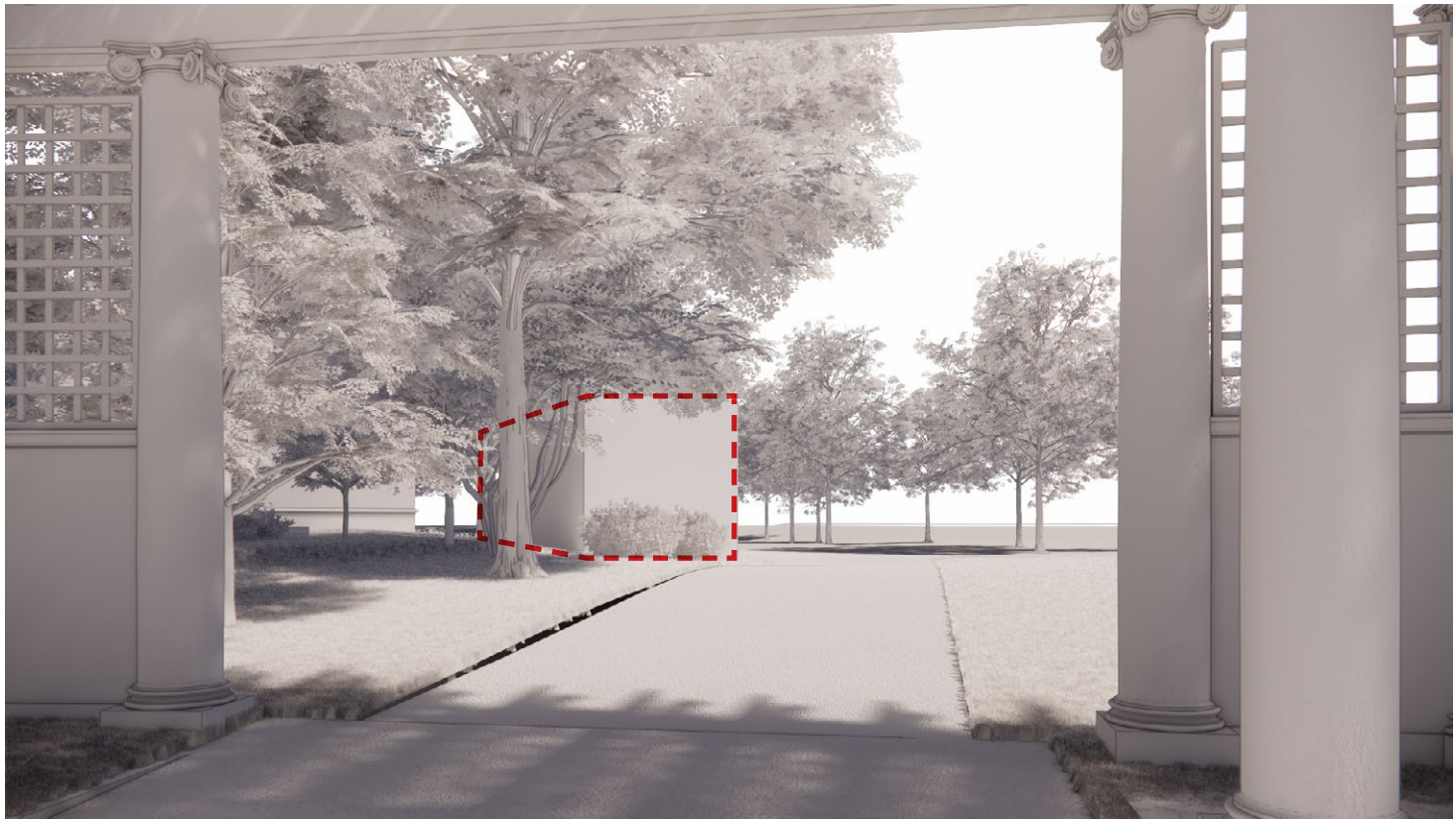
Heat Vulnerability Index

Site is not in high HVI area.

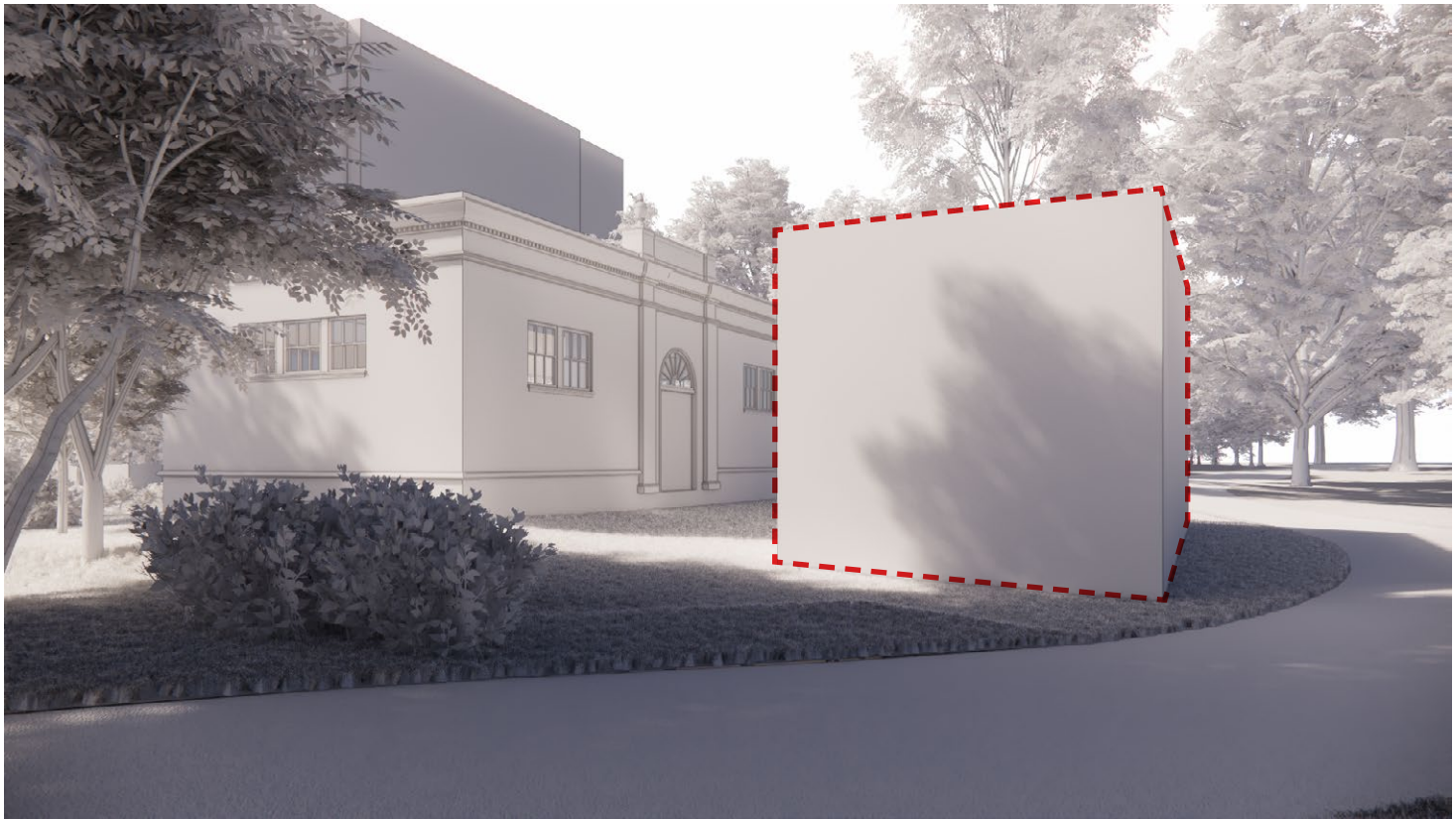


Prospect Park
Shirley Chisholm Pavilion | Building Site Study Plan





1 - View from pergola



2 - View from east path



Pros:

- Proximity to monument
- Within Olmsted buffer

Cons:

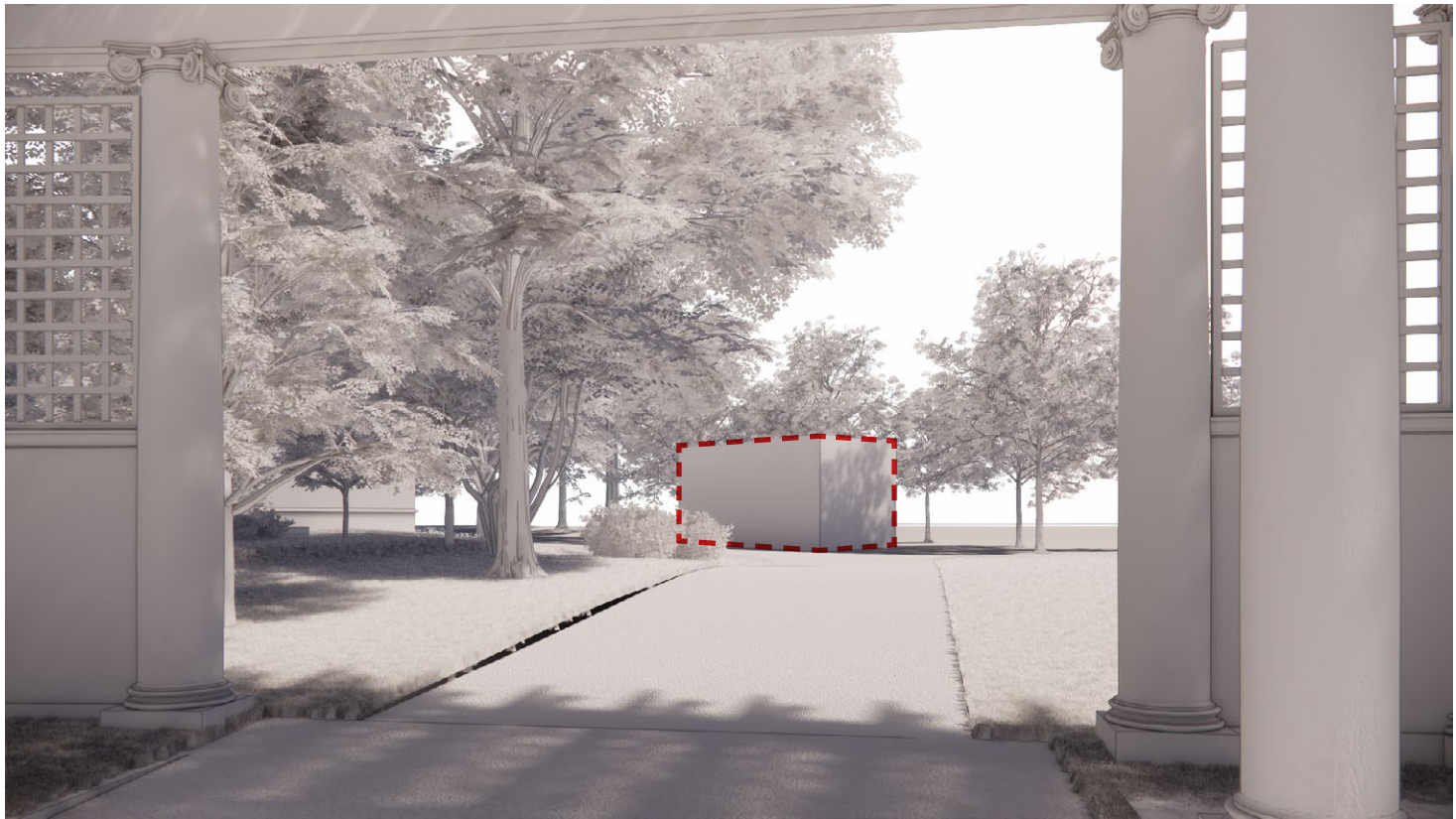
- Obtrusive view from pergola entry axis
- Constricted space between pavilion and restroom
- Obstructs primary facade of restroom



NYC Parks



Prospect Park
Shirley Chisholm Pavilion | Site Study **A**



1 - View from pergola



2 - View from east path



Pros:

- Dialogue with restroom across pedestrian path
- Proximity to monument

Cons:

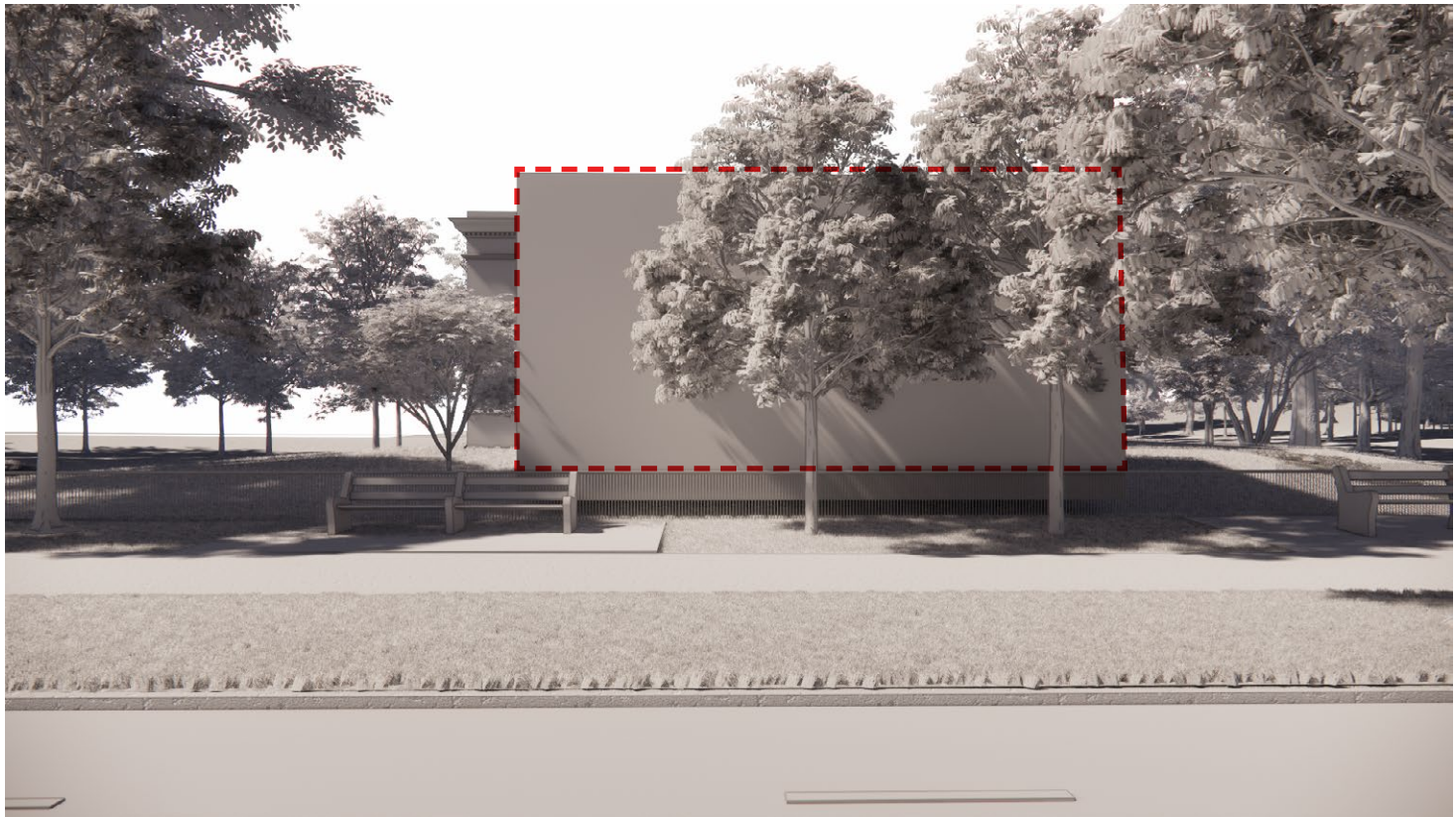
- Obtrusive view from pergola entry axis
- Outside of Olmsted “buffer” where structures are traditionally placed
- Potential disruption of donor trees



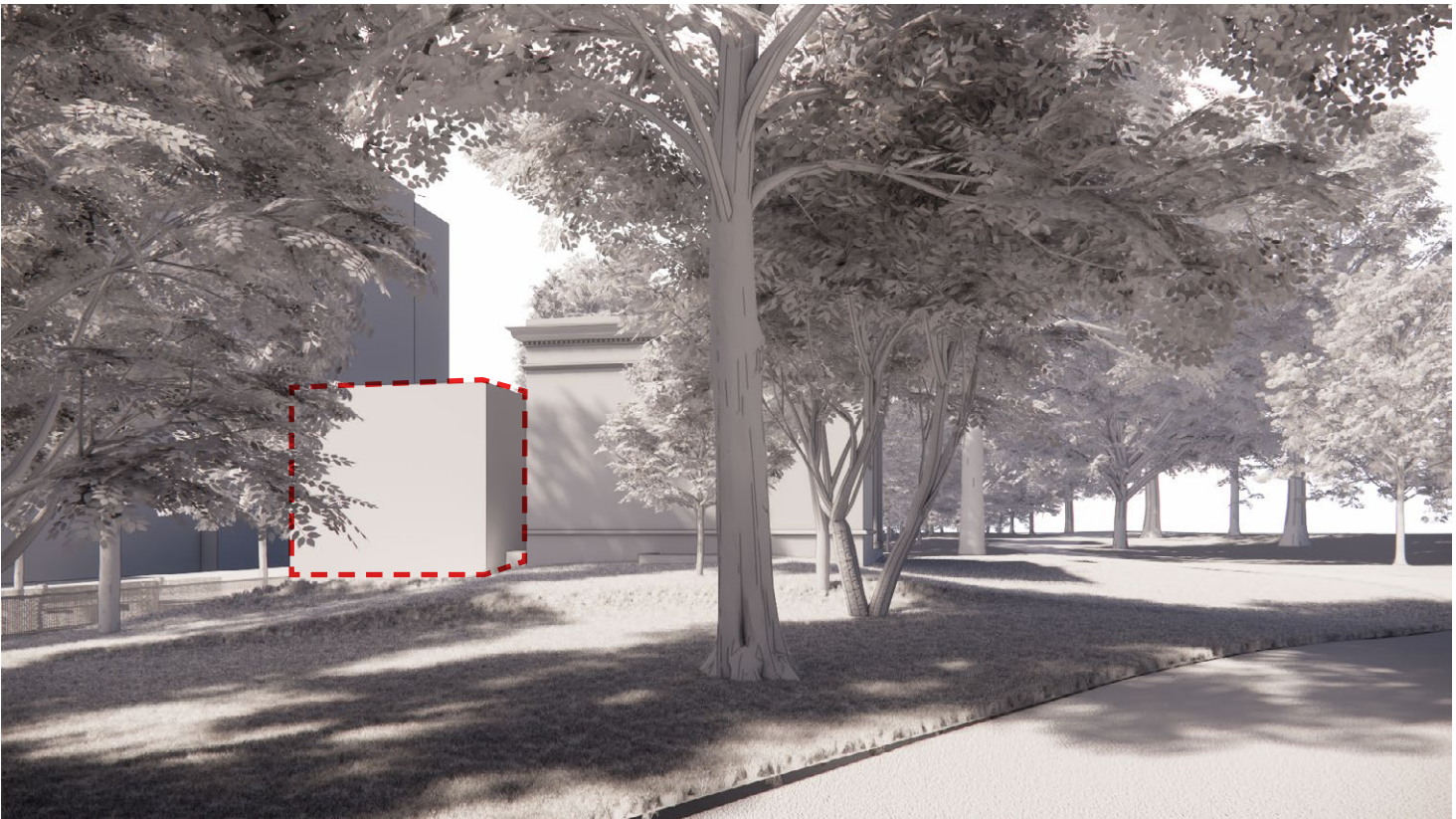
NYC Parks



Prospect Park
Shirley Chisholm Pavilion | Site Study **B**



1 - View from Parkside



2 - View from east path



Pros:

- Proximity to monument
- Inside Olmsted "buffer"

Cons:

- Steep grade change along Parkside Ave
- Obscures main restroom facade
- Difficult access from park entrance



NYC Parks



Prospect Park
Shirley Chisholm Pavilion | Site Study 



NYC Parks



Prospect Park

Shirley Chisholm Pavilion | Appendix: View from Path - West Approach

The monument and Shirley Chisholm Pavilion not only commemorate Chisholm, but also celebrate the Caribbean community in the nearby neighborhoods.

The Pavilion will support the existing gathering space of the Drummers' Grove and Prospect Park Alliance's community programming. Display panels will share information about Shirley Chisholm and the community.

The project takes inspiration from pre-colonial Caribbean architecture, using systems of lightweight posts and infill screen, as well as the colorful reclamation of post-colonial architecture.

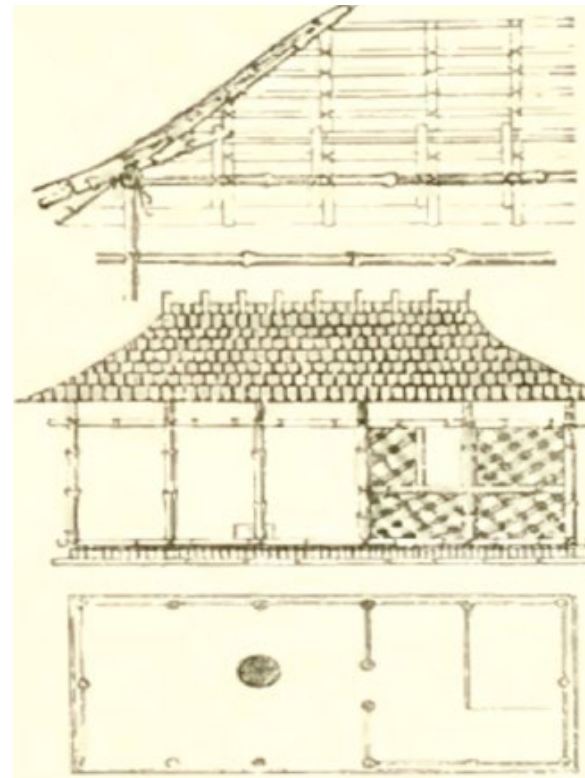
Shirley Chisholm had roots in Guyana and Barbados, an American who had a forward progressive vision for not only the community of her time, but also for the future of Brooklyn, whose residents come from diverse cultures and backgrounds.



Bridgetown, Barbados



Lefferts Historic House



Pre-Colonial Barbadian architecture



Speightstown, Barbados



Drummer's Grove



NYC Parks



Prospect Park

Shirley Chisholm Pavilion | Appendix: The Caribbean Community



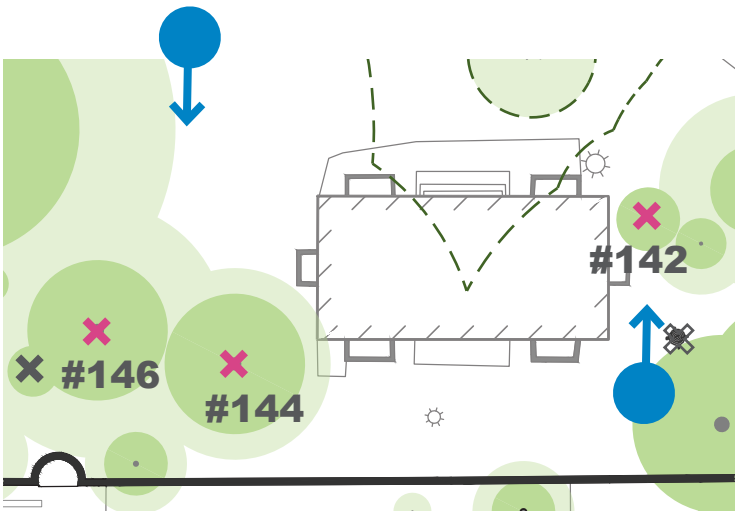




#144 American elm,
25" DBH



#146 Norway maple,
25" DBH



#142 Sassafras tree, 10" DBH



NYC Parks



November 25, 2025
Public Hearing

The current proposal is:

Preservation Department – Item 6, LPC-26-04034

**176 Parkside Avenue – Prospect Park – Scenic Landmark
Borough of Manhattan**

To testify virtually, please join Zoom

Webinar ID: 161 161 2069

Passcode: 557080

By Phone: 646-828-7666 (NY)

833-435-1820 (Toll-free)

833-568-8864 (Toll-free)

Note: If you want to testify virtually on an item, join the Zoom webinar at the agenda's "Be Here by" time (about an hour in advance). When the Chair indicates it's time to testify, "raise your hand" via the Zoom app if you want to speak (*9 on the phone). Those who signed up in advance will be called first.